

C7 D A RESOLUTION OF THE MAYOR AND CITY COMMISSION OF THE CITY OF MIAMI BEACH, FLORIDA, ACCEPTING THE RECOMMENDATION OF THE PUBLIC SAFETY AND NEIGHBORHOOD QUALITY OF LIFE COMMITTEE (PSNQLC) AT ITS JUNE 5, 2024, MEETING AND DIRECTING THE ADMINISTRATION TO DEVELOP A DESIGN AND IMPLEMENT THE INSTALLATION OF SIGNS OF POSITIVE AFFIRMATIONS AT BAYSHORE PARK, CURRENTLY UNDER CONSTRUCTION, AS RECOMMENDED BY THE CITY OF MIAMI BEACH YOUTH COMMISSION.

# MIAMI BEACH

## COMMISSION MEMORANDUM

TO: Honorable Mayor and Members of the City Commission

FROM: Rickelle Williams, Interim City Manager

DATE: June 26, 2024

TITLE: A RESOLUTION OF THE MAYOR AND CITY COMMISSION OF THE CITY OF MIAMI BEACH, FLORIDA, ACCEPTING THE RECOMMENDATION OF THE PUBLIC SAFETY AND NEIGHBORHOOD QUALITY OF LIFE COMMITTEE (PSNQLC) AT ITS JUNE 5, 2024, MEETING AND DIRECTING THE ADMINISTRATION TO DEVELOP A DESIGN AND IMPLEMENT THE INSTALLATION OF SIGNS OF POSITIVE AFFIRMATIONS AT BAYSHORE PARK, CURRENTLY UNDER CONSTRUCTION, AS RECOMMENDED BY THE CITY OF MIAMI BEACH YOUTH COMMISSION.

### **RECOMMENDATION**

The Administration recommends that the Mayor and City Commission adopt the resolution.

### **BACKGROUND/HISTORY**

On May 15, 2024, the Mayor and City Commission referred item C4 D (Exhibit A), sponsored by Vice-Mayor Laura Dominguez, to the Public Safety and Neighborhood Quality of Life Committee (PSNQLC), to discuss the installation of positive mental health affirmation signage at Bayshore Park.

On April 16, 2024 the City of Miami Beach Youth Commission unanimously passed a motion recommending the Mayor and City Commission create signage with positive mental health affirmations along the jogging trail/butterfly garden in Bayshore Park to coincide with the park opening in fall 2025.

Bayshore Park is approximately 19.4 acres and is located at 2300 Pine Tree Drive. The park is located between Miami Beach Senior High School and the Scott Rakow Youth Center and will host many youth who reside in Miami Beach.

The new park will include a children's playground for different ages, exercise station, sports tennis courts, pathways, jogging trails, and a dog park. The park will also include a bathroom/office building, site furnishings, lake with infrastructure for future connection to the neighborhood drainage system, lake circulation and ozone water treatment system, and lake littoral zone. In addition, the park will feature entrance and park identification signs, a parking lot, lighting system, landscaping including the butterfly garden, an irrigation system, and connection to the utilities and FPL system.

On May 19, 2016, the City executed an agreement with Savino Miller Design Studio (SMDS) for the Landscaping, Architectural, and Engineering Design Services for the Bayshore Park Project. The park's design was presented at many public meetings including the Design Review Board, Parks and Recreation Advisory Board, Sustainability Committee, and the Bayshore Homeowner's Association.

On December 14, 2022, the Mayor and City Commission approved the award of a contract to Buslam Company Partners Inc., for the construction of Bayshore Park. The City hosted a

groundbreaking ceremony for the project on September 19, 2023.

Bayshore Park is currently under construction, and is approximately thirty percent (30%) complete, with an anticipated completion of fall 2025.

## **ANALYSIS**

The City of Miami Beach Youth Commission has expressed that one of the biggest problems faced by teens in our City is mental health. The Youth Commission's initiative of creating positive affirmation and mental health signage in Bayshore Park aims to help tackle this prevalent issue in our community.

Bayshore Park will have an expansive jogging trail circling and bordering different parts of the park, including the butterfly garden. The Youth Commission believes that the butterfly garden can provide calming places where people relax, meditate, and enjoy nature, and their proposal is to install positive affirmation and mental health signage along the jogging trail in the portion of the park where it borders the butterfly garden. The signage could serve as a validating and educational tool, raising awareness about the importance of mental health and destigmatizing conversations surrounding mental health struggles and burnout. Through carefully crafted messages, visitors may gain insights into coping strategies, mindfulness practices, and resources available for mental health support within the community. Examples of positive affirmation and mental health signage artwork can be seen in Exhibit B. If implemented, such signage would be the first of its kind in City parks.

This initiative proposes that the artwork for the positive affirmation and mental health signage be created by local Miami Beach artists and art students at Miami Beach Senior High, thereby highlighting Miami Beach artists and youth while achieving the goal of improving mental health throughout the City.

Messaging for the signs could be implemented from the Poetry Project, a social experiment originating to promote mental health awareness and well-being within the London Underground. The Poetry Project has experienced considerable growth over time and there would be no cost for using quotes from this project.

The inclusion of signage featuring positive mental health affirmations in Bayshore Park aligns with the City's commitment to promote the well-being of community members, especially our youth. Creating a supportive and uplifting environment within the park can empower individuals to prioritize their mental health and foster a sense of belonging.

The Youth Commission's vision for this initiative would include 12 to 16 different, double-sided signs, using a typical size for traffic signs of approximately 12" x 18", with an introduction sign stating information about the initiative, how it was created by the Youth Commission and listing accessible mental health resources. The colorful signs would be installed on poles that would border the jogging trail in the area where it borders the butterfly garden.

City staff has shared the Youth Commission's proposal with SMDS who expressed a preference "to keep the park virtually sign free, allowing the user to curate his/her own feelings for the park experience." Concerned that the signs could be distracting to park views, and subjected to vandalism, the consultant suggested that similar results could be achieved through the use of fewer and smaller signs with QR codes, allowing for varying messages and greater flexibility.

On June 5, 2024, the PSNQLC discussed this item, and asked that staff provide a rough estimate of the cost required to implement this plan. Since the meeting, staff has discussed this project with SMDS, the design consultant for Bayshore Park, who again expressed concern with potential

sign pollution concerns, and interference with the park experience. The consultant has provided a proposal to design up to three alternate sign/message types for review and approval, more closely integrating park design materials and concepts, while allowing for the incorporation of sign graphics as described by the Youth Commission. Design concepts would ensure that the following concerns are addressed:

- Sign messages are incorporated into park design at various individual locations, not grouped together.
- Sign “base structure” limited to 2’-6” in height and width and 2-0” depth, using durable, non-frangible material, such as stone or metal.
- Sign message “panel” should be replaceable material, such as stone, metal, or clear polycarbonate (no poles).
- Possible inclusion of QR Codes.
- Final Permit drawings and sign material would also need to be developed once sign design and materials are selected.

Should the Mayor and City Commission elect to implement this initiative, City staff will need to engage the design consultant, coordinate permitting, including the preparation and approval by the Building Department of a sign permit, and explore potential zoning restrictions and the design of the signs.

### **FISCAL IMPACT STATEMENT**

The cost to implement this initiative is approximately \$70,000. Funding will have to be identified and appropriated through the annual budget process.

### **Does this Ordinance require a Business Impact Estimate?** (FOR ORDINANCES ONLY)

The Business Impact Estimate (BIE) was published on . See BIE at:  
<https://www.miamibeachfl.gov/city-hall/city-clerk/meeting-notice/>

### **FINANCIAL INFORMATION**

### **CONCLUSION**

Pursuant to the recommendations by PSNQLC, at its June 5, 2024 meeting, the Administration recommends that the Mayor and City Commission adopt the resolution. Funding for the project would need to be identified and appropriated through the annual budget process.

### **Applicable Area**

Middle Beach

### **Is this a “Residents Right to Know” item, pursuant to City Code Section 2-17?**

Yes

### **Is this item related to a G.O. Bond Project?**

Yes

**Was this Agenda Item initially requested by a lobbyist which, as defined in Code Sec. 2-481, includes a principal engaged in lobbying?** No

If so, specify the name of lobbyist(s) and principal(s):

**Department**

Capital Improvement Projects

**Sponsor(s)**

Commissioner Laura Dominguez

**Co-sponsor(s)**

Commissioner Alex Fernandez

Committee Assignments - C4 D

## MIAMI BEACH

## COMMISSION MEMORANDUM

TO: Honorable Mayor and Members of the City Commission  
FROM: Vice-Mayor Laura Dominguez  
DATE: May 15, 2024

SUBJECT: REFERRAL TO THE PUBLIC SAFETY AND NEIGHBORHOOD QUALITY OF LIFE COMMITTEE -  
DISCUSSION REGARDING BAYSHORE PARK POSITIVE AFFIRMATIONS AND MENTAL  
HEALTH SIGNAGE.

**RECOMMENDATION**

Please place on the May 15, 2024 agenda a referral to the Public Safety and Neighborhood Quality of Life Committee ("PSNQLC") to discuss the installation of positive mental health affirmation signage at the Bayshore Park.

At its March 16, 2024 meeting, the Youth Commission passed a unanimous motion recommending for the Mayor and City Commission to create signage with positive mental health affirmations along the jogging trail/butterfly garden in Bayshore Park to coincide with the park opening in Fall 2025.

The Bayshore Park is a 19.4-acre park that is currently under construction and is set to open in the Fall of 2025. The park is located between Miami Beach Senior High School and the Scott Rakow Youth Center, and will host many teenagers and other youth who reside in Miami Beach.

The City's advisory Youth Commission has recently established that one of the biggest problems faced by the teens in our City is mental health. The Commission's initiative of creating positive affirmation and mental health signage in Bayshore Park aims to help tackle this prevalent issue in our community.

The Bayshore Park will have an expansive jogging trail circling and bordering different parts of the park, including the butterfly garden. Butterfly gardens are known to be calming places where people relax, meditate, and enjoy nature. The Commission's proposal is to put positive affirmation & mental health signage along the jogging trail in the portion of the park where it borders the butterfly garden. The signage can serve as a validating and educational tool, raising awareness about the importance of mental health and destigmatizing conversations surrounding mental health struggles and burnout. Through carefully crafted messages, visitors can gain insights into coping strategies, mindfulness practices, and resources available for mental health support within the community. If implemented, such signage would be the first of its kind in City parks.

The idea is to have the artwork for the positive affirmation and mental health signage be created by local Miami Beach artists and art students at Miami Beach Senior High, in order to highlight Miami Beach artists and youth while achieving the goal of improving mental health throughout the City.

I would like for the messaging on the signage to be implemented from the Poetry Project. Originating as a social experiment to promote mental health awareness and overall well-being within the London Underground, the Poetry Project has experienced considerable growth over time and there is no charge to use the quotes from this project (See attached Exhibit A).

I believe that the inclusion of signage featuring positive mental health affirmations in Bayshore Park aligns with our commitment to promoting the well-being of our community members, especially our youth. By creating a supportive and uplifting environment, we can empower individuals to prioritize their mental health and foster a sense of belonging within the park space.

**BACKGROUND/HISTORY**

Please place on the May 15, 2024 agenda a referral to the Public Safety and Neighborhood Quality of Life Committee ("PSNQLC") to discuss the installation of positive mental health affirmation signage at the Bayshore Park.

At its March 16, 2024 meeting, the Youth Commission passed a unanimous motion recommending for the Mayor and City Commission to create signage with positive mental health affirmations along the jogging trail/butterfly garden in Bayshore Park to coincide with the park opening in Fall 2025.

The Bayshore Park is a 19.4-acre park that is currently under construction and is set to open in the Fall of 2025. The park is located between Miami Beach Senior High School and the Scott Rakow Youth Center, and will host many teenagers and other youth who reside in Miami Beach.

The City's advisory Youth Commission has recently established that one of the biggest problems faced by the teens in our City is mental health. The Commission's initiative of creating positive affirmation and mental health signage in Bayshore Park aims to help tackle this prevalent issue in our community.

The Bayshore Park will have an expansive jogging trail circling and bordering different parts of the park, including the butterfly

garden. Butterfly gardens are known to be calming places where people relax, meditate, and enjoy nature. The Commission's proposal is to put positive affirmation & mental health signage along the jogging trail in the portion of the park where it borders the butterfly garden. The signage can serve as a validating and educational tool, raising awareness about the importance of mental health and destigmatizing conversations surrounding mental health struggles and burnout. Through carefully crafted messages, visitors can gain insights into coping strategies, mindfulness practices, and resources available for mental health support within the community. If implemented, such signage would be the first of its kind in City parks.

The idea is to have the artwork for the positive affirmation and mental health signage be created by local Miami Beach artists and art students at Miami Beach Senior High, in order to highlight Miami Beach artists and youth while achieving the goal of improving mental health throughout the City.

I would like for the messaging on the signage to be implemented from the Poetry Project. Originating as a social experiment to promote mental health awareness and overall well-being within the London Underground, the Poetry Project has experienced considerable growth over time and there is no charge to use the quotes from this project (See attached Exhibit A).

I believe that the inclusion of signage featuring positive mental health affirmations in Bayshore Park aligns with our commitment to promoting the well-being of our community members, especially our youth. By creating a supportive and uplifting environment, we can empower individuals to prioritize their mental health and foster a sense of belonging within the park space.

**SUPPORTING SURVEY DATA**

n/a

**FINANCIAL INFORMATION**

n/a

**Amount(s)/Account(s):**

n/a

**CONCLUSION**

n/a

**Applicable Area**

South Beach

**Is this a "Residents Right to Know" item, pursuant to City Code Section 2-14?**

No

**Does this item utilize G.O. Bond Funds?**

No

**Legislative Tracking**

Vice-Mayor Laura Dominguez

**Sponsor**

Co-sponsored by Commissioner Alex Fernandez

## MIAMI BEACH

## COMMITTEE MEMORANDUM

TO: Public Safety and Neighborhood Quality of Life Committee Members

FROM: Rickelle Williams, Interim City Manager

DATE: June 5, 2024

SUBJECT: **DISCUSSION REGARDING BAYSHORE PARK POSITIVE AFFIRMATIONS AND MENTAL HEALTH SIGNAGE.**

---

**HISTORY:**

On May 15, 2024, the Mayor and City Commission referred item C4 D (Exhibit A), sponsored by Vice-Mayor Laura Dominguez, to the Public Safety and Neighborhood Quality of Life Committee (PSNQLC), to discuss the installation of positive mental health affirmation signage at Bayshore Park.

On April 16, 2024 the City of Miami Beach Youth Commission unanimously passed a motion recommending the Mayor and City Commission create signage with positive mental health affirmations along the jogging trail/butterfly garden in Bayshore Park to coincide with the park opening in Fall 2025.

Bayshore Park is approximately 19.4 acres and is located at 2300 Pine Tree Drive. The park is located between Miami Beach Senior High School and the Scott Rakow Youth Center and will host many youth who reside in Miami Beach.

The new park will include a children's playground for different ages, exercise station, sports tennis courts, pathways, jogging trails, and a dog park. The park will also include a bathroom/office building, site furnishings, lake with infrastructure for future connection to the neighborhood drainage system, lake circulation and ozone water treatment system, and lake littoral zone. In addition, the park will feature entrance and park identification signs, a parking lot, lighting system, landscaping including the butterfly garden, an irrigation system, and connection to the utilities and FPL system.

On May 19, 2016, the City executed an agreement with Savino Miller Design Studio (SMDS) for the Landscaping, Architectural, and Engineering Design Services for the Bayshore Park Project. The park's design was presented at many public meetings including the Design Review Board, Parks and Recreation Advisory Board, Sustainability Committee, and the Bayshore Homeowner's Association.

On December 14, 2022, the Mayor and City Commission approved the award of a contract to Buslam Company Partners Inc., for the construction of the Bayshore Park. The City hosted a groundbreaking ceremony for the project on September 19, 2023.

Bayshore Park is currently under construction, and is approximately thirty (30%) complete, with an anticipated completion of Fall of 2025.

**ANALYSIS**

The City of Miami Beach Youth Commission has expressed that one of the biggest problems faced by teens in our City is mental health. The Youth Commission's initiative of creating positive affirmation and mental health signage in Bayshore Park aims to help tackle this prevalent issue in our community.

Bayshore Park will have an expansive jogging trail circling and bordering different parts of the park, including the butterfly garden. The Youth Commission believes that butterfly garden can provide calming places where people relax, meditate, and enjoy nature, and their proposal is to install positive affirmation and mental health signage along the jogging trail in the portion of the park where it borders the butterfly garden. The signage could serve as a validating and educational tool, raising awareness about the importance of mental health and destigmatizing conversations surrounding mental health struggles and burnout. Through carefully crafted messages, visitors may gain insights into coping strategies, mindfulness practices, and resources available for mental health support within the community. Examples of positive affirmation and mental health signage artwork can be seen in Exhibit B. If implemented, such signage would be the first of its kind in City parks.

This initiative proposes that the artwork for the positive affirmation and mental health signage be created by local Miami Beach artists and art students at Miami Beach Senior High, thereby highlighting Miami Beach artists and youth while achieving the goal of improving mental health throughout the City.

Messaging for the signs could be implemented from the Poetry Project, a social experiment originating to promote mental health awareness and well-being within the London Underground. The Poetry Project has experienced considerable growth over time and there would be no cost for using quotes from this project.



The inclusion of signage featuring positive mental health affirmations in Bayshore Park aligns with the City's commitment to promote the well-being of the community members, especially our youth. Creating a supportive and uplifting environment within the park can empower individuals to prioritize their mental health and foster a sense of belonging.

The Youth Commission's vision for this initiative would include 12 to 16 different, double-sided signs, using a typical size for traffic signs of approximately 12" X 18", with an introduction sign stating information about the initiative, how it was created by the Youth Commission and listing accessible mental health resources. The colorful signs would be installed on poles that would border the jogging trail in the area where it borders the butterfly garden.

City staff has shared the Youth Commission's proposal with SMDS who expressed a preference "to keep the park virtually sign free, allowing the user to curate his/her own feelings for the park experience." Concerned that the signs could be distracting to park views, and subjected to vandalism, the consultant suggested that similar results could be achieved through the use of fewer and smaller signs with QR codes, allowing for varying messages and greater flexibility.

Should the Committee elect to consider this initiative, City staff will need to coordinate permitting, including the preparation and approval by the Building Department of a sign permit, and explore potential zoning restrictions and the design of the poles. The Administration has not yet determined the potential cost implications for the design, permitting, manufacturing and installation.

#### **CONCLUSION:**

The foregoing is presented to the members of the PSNQLC for discussion.

#### **Applicable Area**

Middle Beach



**Is this a "Residents Right to Know" item, pursuant to City Code Section 2-14?**

Yes

**Does this item utilize G.O. Bond Funds?**

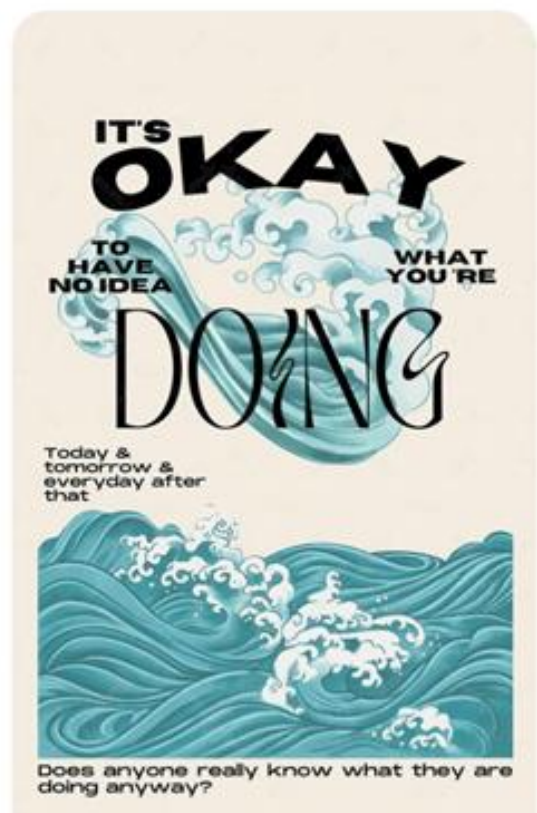
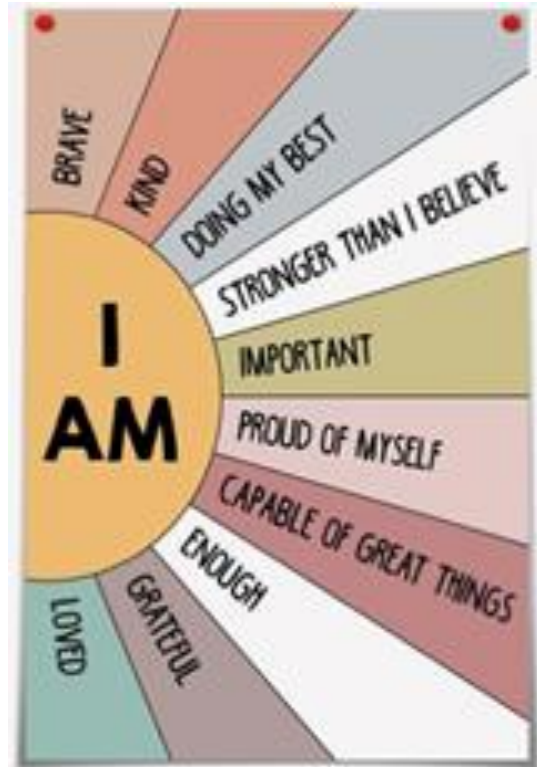
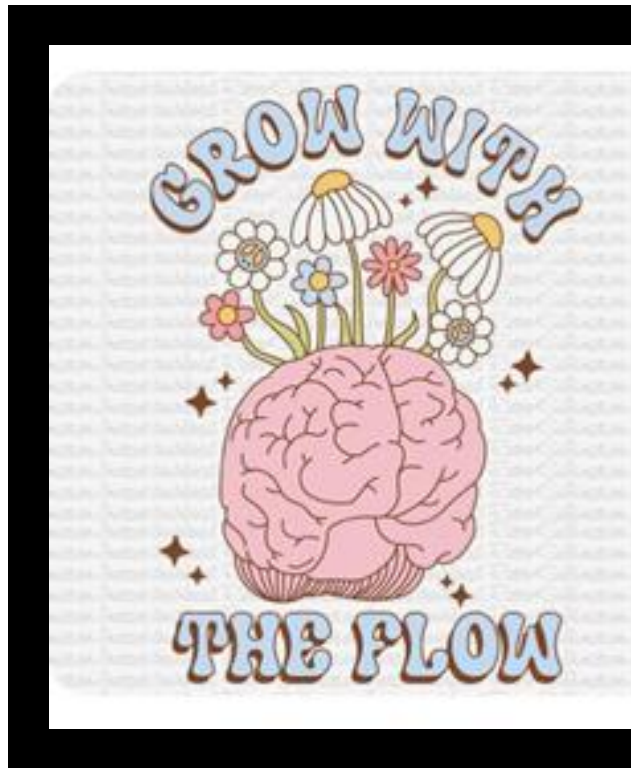
No

#### **ATTACHMENTS:**

Description	Type
 <a href="#">Exhibit A - Referral Memo from May 15, 2024 Meeting Item C4 D</a>	Memo
 <a href="#">Exhibit B - Examples of Positive Affirmation &amp; Mental Health Signage Artwork</a>	Memo

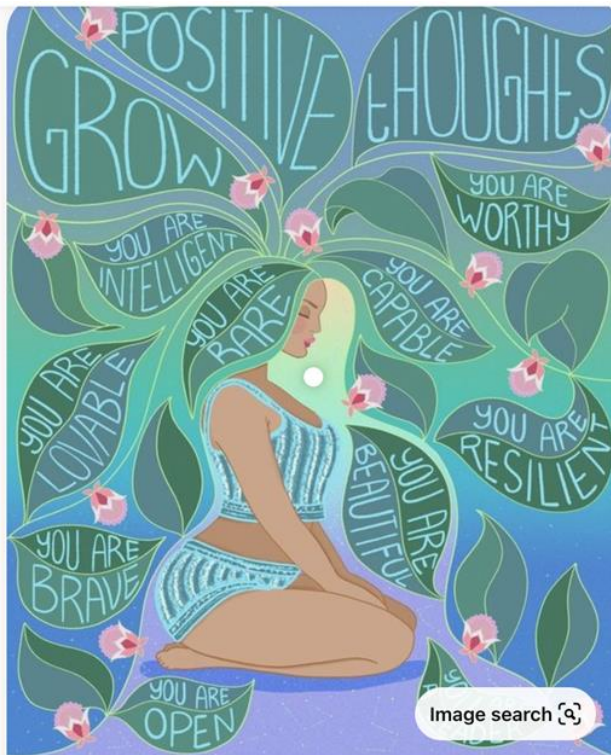
EXAMPLES OF POSITIVE AFFIRMATION AND  
MENTAL HEALTH SIGNAGE ARTWORK

EXHIBIT B



EXAMPLES OF POSITIVE AFFIRMATION AND  
MENTAL HEALTH SIGNAGE ARTWORK

EXHIBIT B



RESOLUTION NO. \_\_\_\_\_

**A RESOLUTION OF THE MAYOR AND CITY COMMISSION OF THE CITY OF MIAMI BEACH, FLORIDA, ACCEPTING THE RECOMMENDATION OF THE PUBLIC SAFETY AND NEIGHBORHOOD QUALITY OF LIFE COMMITTEE (PSNQLC) AT ITS JUNE 5, 2024, MEETING AND DIRECTING THE ADMINISTRATION TO DEVELOP A DESIGN AND IMPLEMENT THE INSTALLATION OF SIGNS OF POSITIVE AFFIRMATIONS AT BAYSHORE PARK, CURRENTLY UNDER CONSTRUCTION, AS RECOMMENDED BY THE CITY OF MIAMI BEACH YOUTH COMMISSION.**

**WHEREAS**, on April 16, 2024, the City of Miami Beach Youth Commission (the "Youth Commission") unanimously passed a motion recommending the Mayor and City Commission create signage with positive mental health affirmations along the jogging trail/butterfly garden in Bayshore Park to coincide with the park opening in fall 2025; and

**WHEREAS**, on May 15, 2024, the Mayor and City Commission referred item C4 D, sponsored by Vice-Mayor Laura Dominguez, to the Public Safety and Neighborhood Quality of Life Committee (PSNQLC), to discuss the installation of positive mental health affirmation signage at Bayshore Park as recommended by the Youth Commission; and

**WHEREAS**, Bayshore Park is approximately 19.4 acres, located at 2300 Pine Tree Drive between Miami Beach Senior High School and the Scott Rakow Youth Center, and is enjoyed by residents, including the City's youth; and

**WHEREAS**, the new park will include a children's playground for different ages, exercise station, sports tennis courts, pathways, jogging trails, and a dog park and will also include a bathroom/office building, site furnishings, lake with infrastructure for future connection to the neighborhood drainage system, lake circulation and ozone water treatment system, and lake littoral zone; and

**WHEREAS**, in addition, the park will feature entrance and park identification signs, a parking lot, lighting system, landscaping including the butterfly garden, an irrigation system, and connection to the utilities and FPL system; and

**WHEREAS**, on May 19, 2016, the City executed an agreement with Savino Miller Design Studio (SMDS) for the Landscaping, Architectural, and Engineering Design Services for the Bayshore Park Project; and

**WHEREAS**, the park's design was presented at many public meetings including the Design Review Board, Parks and Recreation Advisory Board, Sustainability Committee, and the Bayshore Homeowner's Association; and

**WHEREAS**, on December 14, 2022, the Mayor and City Commission approved the award of a contract to Buslam Company Partners Inc., for the construction of the



Bayshore Park and the City hosted a groundbreaking ceremony for the project on September 19, 2023; and

**WHEREAS**, Bayshore Park is currently under construction, and is approximately thirty (30%) complete, with an anticipated completion of Fall of 2025; and

**WHEREAS**, the City of Miami Beach Youth Commission has expressed that one of the biggest problems faced by teens in our City is mental health; and

**WHEREAS**, the Youth Commission's initiative of creating positive affirmation and mental health signage in Bayshore Park aims to help tackle this prevalent issue in our community; and

**WHEREAS**, Bayshore Park will have an expansive jogging trail circling and bordering different parts of the park, including the butterfly garden; and

**WHEREAS**, the Youth Commission believes that the butterfly garden can provide calming places for people to relax, meditate, and enjoy nature, and their proposal is to install positive affirmation and mental health signage along the jogging trail in the portion of the park bordering the butterfly garden; and

**WHEREAS**, the signage could serve as a validating and educational tool, raising awareness about the importance of mental health and destigmatizing conversations surrounding mental health struggles and burnout; and

**WHEREAS**, and through carefully crafted messages, visitors may gain insights into coping strategies, mindfulness practices, and resources available for mental health support within the community; and

**WHEREAS**, examples of positive affirmation and mental health signage artwork can be seen in Exhibit B, which, If implemented, would be the first signage of its kind in City parks; and

**WHEREAS**, under this plan, the artwork for the positive affirmation and mental health signage would be created by local Miami Beach artists and art students at Miami Beach Senior High, thereby highlighting Miami Beach artists and youth while achieving the goal of improving mental health throughout the City; and

**WHEREAS**, messaging for the signs could be implemented from the Poetry Project, a social experiment originating to promote mental health awareness and well-being within the London Underground; and

**WHEREAS**, the Poetry Project has experienced considerable growth over time and there would be no cost for using quotes from this project; and

---

**WHEREAS**, the inclusion of signage featuring positive mental health affirmations in Bayshore Park aligns with the City's commitment to promote the well-being of the community members, especially the City's youth; and

**WHEREAS**, creating a supportive and uplifting environment within the park can empower individuals to prioritize their mental health and foster a sense of belonging; and

**WHEREAS**, the Youth Commission's vision for this initiative would include 12 to 16 different, double-sided signs, using a typical size for traffic signs of approximately 12" X 18", with an introduction sign stating information about the initiative, how it was created by the Youth Commission and listing accessible mental health resources; and

**WHEREAS**, the colorful signs would be installed on poles that would border the jogging trail in the area where it borders the butterfly garden; and

**WHEREAS**, City staff has shared the Youth Commission's proposal with SMDS who expressed a preference "to keep the park virtually sign free, allowing the user to curate his/her own feelings for the park experience"; and

**WHEREAS**, concerned that the signs could be distracting to park views, and subjected to vandalism, the consultant suggested that similar results could be achieved through the use of fewer and smaller signs with QR codes, allowing for varying messages and greater flexibility; and

**WHEREAS**, on June 5, 2024, the PSNQLC discussed this item, and asked that staff provide a rough estimate of the cost required to implement this plan; and

**WHEREAS**, following PSNQLC direction, staff has discussed this project with SMDS, the design consultant for Bayshore Park, who again expressed concern with potential sign pollution concerns, and interference with the park experience; and

**WHEREAS**, the consultant has provided a proposal to design up to three alternate sign/message types for review and approval, more closely integrating park design materials and concepts, while allowing for the incorporation of sign graphics as described by the Youth Commission.

**WHEREAS**, design concepts would ensure that the following concerns are addressed:

- Sign messages are incorporated into park design in various individual locations, not grouped together.
- Sign "base structure" limited to 2'-6" in height and width and 2-0" depth, using durable, non-frangible material, such as stone or metal.
- Sign message "panel" should be replaceable material, such as stone, metal, or clear polycarbonate (no poles).
- Possible inclusion of QR Codes; and

**WHEREAS**, final Permit drawings and sign material would also need to be developed once sign design and materials are selected; and

**WHEREAS**, should the Mayor and City Commission elect to implement this initiative, City staff will need to engage the design consultant, coordinate permitting, including the preparation and approval by the Building Department of a sign permit, and explore potential zoning restrictions and the design of the signs; and

**WHEREAS**, the cost to implement this initiative is approximately \$70,000; and

**WHEREAS**, Funding will have to be identified and appropriated for this project; and

**WHEREAS**, pursuant to the recommendations by PSNQLC, at its June 5, 2024, meeting, the Administration recommends that the Mayor and City Commission adopt the resolution.

**NOW, THEREFORE, BE IT DULY RESOLVED BY THE MAYOR AND CITY COMMISSION OF THE CITY OF MIAMI BEACH, FLORIDA**, that the Mayor and City Commission hereby accept the recommendation of the Public Safety and Neighborhood Quality of Life Committee (PSNQLC) at its June 5, 2024, meeting and direct the Administration to develop a design and implement the installation of signs of positive affirmations at Bayshore Park, currently under construction, as recommended by the City of Miami Beach Youth Commission.

**PASSED and ADOPTED** this \_\_\_\_ day of \_\_\_\_\_, 2024.

\_\_\_\_\_  
Steven Meiner, Mayor

**ATTEST:**

\_\_\_\_\_  
Rafael E. Granado, City Clerk

APPROVED AS TO  
FORM & LANGUAGE  
& FOR EXECUTION



City Attorney

6/17/2024

Date