

15. DISCUSS THE BEAUTIFICATION OF SIDEWALKS ON COLLINS AVENUE WITH MOSAIC DESIGNS, LANDSCAPING AND DECORATIVE UPLIGHTING
Applicable Area:

MIAMI BEACH

COMMITTEE MEMORANDUM

TO: Public Safety and Neighborhood Quality of Life Committee Members

FROM: Eric Carpenter, City Manager

DATE: June 3, 2025

TITLE: DISCUSS THE BEAUTIFICATION OF SIDEWALKS ON COLLINS AVENUE WITH MOSAIC DESIGNS, LANDSCAPING AND DECORATIVE UPLIGHTING

RECOMMENDATION

The Administration recommends working with the Florida Department of Transportation ("FDOT") to beautify Collins Avenue on future projects. The Administration does not recommend uplights or upgrading sidewalks (stamped concrete) at this time, which is estimated at \$3,139,474, and currently unfunded.

BACKGROUND/HISTORY

On February 3, 2025, at the request of Commissioner Kristen Rosen Gonzalez, the Mayor and City Commission ("City Commission") approved item C4 O ("Attachment A"), a referral to the Public Safety and Quality of Life Committee ("PSNQLC") to discuss the segmented beautification of sidewalks on Collins Avenue between 5th Street and 15th Street, with mosaic designs (similar to the renowned calçada (sidewalk) along the beach in Rio de Janeiro, designed by Roberto Burle Marx), as well as landscaping and decorative uplighting. The goal is to create a cohesive and inviting environment that draws residents, visitors, and tourists to Collins Avenue, enriching their experience in this iconic part of Miami Beach.

ANALYSIS

There have been similar discussions heard at the Finance and Economic Resiliency Committee ("FERC") meetings during the past few months, regarding the beautification of Washington Avenue and Ocean Drive, utilizing General Obligation ("GO") Bond funds (used to fund capital improvements including landscaping, lighting, and sidewalks). It is important to note that Collins Avenue, however, is not a recipient of these funds, since Collins Avenue falls under FDOT jurisdiction. Any improvement requests on Collins Avenue would require FDOT approval, a budgetary process and City Commission approval. A recent meeting with the Secretary of FDOT and Commissioner Kristen Rosen Gonzalez took place to discuss these enhancements. FDOT would be amenable to the enhancements with the City paying for such items.

UPLIGHTS:

It is important to note that any uplight installation along Collins Avenue will require:

- FDOT approval and permitting
- Existing power outlets are for the exclusive use of FDOT. The installation of uplights will require that the City install electrical service points at each corner.

The estimated cost for permanent uplights is \$1,296,476, plus an estimated 5% per year for maintenance, for a total estimated cost of \$1,361,299, currently unfunded.

SIDEWALKS:

Several options exist for the replacement of the existing sidewalks:

- Miami Beach red concrete: \$1,500,000
- Exposed Shell Specialty concrete: \$1,983,000
- Stamped Concrete Specialty sidewalks: \$1,693,500

Public Works researched mosaic walkways by Burle Marx, to get an idea of how these sidewalks looked (photo below). The closest sidewalk material to create the desired wave-like design is Stamped Concrete Specialty sidewalk, estimated at \$1,693,500, plus an estimated 5% per year for maintenance, for a total estimated cost of \$1,778,175 for the first year.



The undulating mosaic of the walkway at Rio's Copacabana beach is perhaps Burle Marx's most famous work. Photo by Mteixeira62/Wikimedia Commons/CC-by-SA.

LANDSCAPING:

Landscaping on Collins Avenue was restored by FDOT ten years ago. Public Works Greenspace Management is planning on adding shrubbery in the existing bump outs during the third quarter of Fiscal Year 2025.

On March 12, 2025, PSNQLC members continued the discussion and potential steps needed to beautify Collins Avenue. There was a recent study on lighting and sidewalk improvements presented by the Capital Improvements Projects ("CIP") Department for Ocean Drive ("Attachment B"), with different paver brick options. There was also mention of tree ring lights within the discussion. A motion was made to come back to the next meeting with quotes for pavers and tree ring lights. The discussion was added to the May 14, 2025, agenda, however not reached. It is scheduled for June 3, 2025.

Additional estimated costs:

- Paver Bricks: \$3,049,025 (Collins Avenue from 5th to 15th Streets)
- Tree Ring Lights: \$5,000 each, installed, not including electrical service points. There are 66 palm trees, for an estimated \$330,000 (this option is currently not allowed by the City Code as it would damage the trunk of the palm tree over time).

It is important to note there is no GO Bond funding available for Collins Avenue. There is GO Bond funds for Citywide Sidewalk Improvements, Project #37, in the amount of \$1.9 Million. These funds will be used for citywide sidewalk replacement, scheduled over the next three (3) to four (4) years. Using the \$1.9 Million for Collins Avenue would leave the scheduled citywide sidewalk replacement project unfunded

FISCAL IMPACT STATEMENT

The estimated costs are: uplights: \$1,361,299, ring lights: \$330,000, Stamped Concrete Specialty sidewalks: \$1,778,175 or paver bricks: \$3,049,025.

CONCLUSION

The Administration recommends working with FDOT to beautify Collins Avenue on future projects. The Administration does not recommend uplights or upgrading sidewalks (stamped concrete) at this time, which is estimated at \$3,139,474, and currently unfunded

Applicable Area

South Beach

Is this a "Residents Right to Know" item, pursuant to City Code Section 2-17?

Yes

Is this item related to a G.O. Bond Project?

No

Department

Public Works

Sponsor(s)

Commissioner Kristen Rosen Gonzalez

Condensed Title

DISCUSS THE BEAUTIFICATION OF SIDEWALKS ON COLLINS AVENUE WITH MOSAIC DESIGNS, LANDSCAPING AND DECORATIVE UPLIGHTING



COMMISSION MEMORANDUM

TO: Honorable Mayor and Members of the City Commission
FROM: Commissioner Kristen Rosen Gonzalez
DATE: February 3, 2025
TITLE: REFERRAL TO THE PUBLIC SAFETY AND NEIGHBORHOODS QUALITY OF LIFE COMMITTEE TO DISCUSS THE BEAUTIFICATION OF SIDEWALKS ON COLLINS AVENUE WITH MOSAIC DESIGNS, LANDSCAPING AND DECORATIVE UPLIGHTING.

RECOMMENDATION

BACKGROUND/HISTORY

ANALYSIS

FISCAL IMPACT STATEMENT

Please place on the February 3, 2025 agenda a referral to the Public Safety and Neighborhood Quality of Life Committee (the "Committee") to discuss the beautification of sidewalks on Collins Avenue with mosaic designs, landscaping and decorative uplighting.

I would like to discuss with my colleagues on the Committee the possibility of beautifying the sidewalks along Collins Avenue with geometric mosaic designs, similar to the renowned calçada (sidewalk) along the beach in Rio de Janeiro, designed by Roberto Burle Marx. This design, known for its artistic aesthetic and cultural significance, could greatly enhance the visual appeal of Collins Avenue, transforming it into a vibrant and attractive pedestrian corridor that celebrates both art and history.

In addition to the mosaic designs, the Committee should explore the installation of landscaping and decorative landscape uplighting to further enhance the overall aesthetic, safety, and ambiance of the area. The goal is to create a cohesive and inviting environment that draws residents, visitors, and tourists to Collins Avenue, enriching their experience in this iconic part of Miami Beach.

As Collins Avenue is a state road, the Administration should be prepared to discuss the relevant Florida Department of Transportation ("FDOT") requirements for implementing such a project. Additionally, the Administration should provide an estimated cost for beautifying Collins Avenue between 5th Street and 15th Street, with a phased (segmented) approach to ensure the project can be implemented in stages.

Does this Ordinance require a Business Impact Estimate?

(FOR ORDINANCES ONLY)

If applicable, the Business Impact Estimate (BIE) was published on:

See BIE at: <https://www.miamibeachfl.gov/city-hall/city-clerk/meeting-notices/>

FINANCIAL INFORMATION

CONCLUSION

Applicable Area

Citywide

Is this a "Residents Right to Know" item, pursuant to City Code Section 2-17?

Yes

Is this item related to a G.O. Bond Project?

No

Was this Agenda Item initially requested by a lobbyist which, as defined in Code Sec. 2-481, includes a principal engaged in lobbying? No

If so, specify the name of lobbyist(s) and principal(s):

Department

Office of Commissioner Kristen Rosen Gonzalez

Sponsor(s)

Commissioner Kristen Rosen Gonzalez

Co-sponsor(s)

Condensed Title

Ref: PSNQLC - Beautify Sidewalks on Collins Ave w/ Mosaic Designs/Landscaping/Decorative Uplighting. (KRG)

Previous Action (For City Clerk Use Only)

LIGHTING AND SIDEWALK IMPROVEMENTS

CITY OF MIAMI BEACH

OCEAN DRIVE

Calvin, Giordano & Associates, Inc.



CITY OF MIAMI BEACH

OCEAN DRIVE | LIGHTING AND SIDEWALK IMPROVEMENTS

PUBLIC MEETING
MARCH 2025

2 Concurrent projects:

IMPLEMENTING THE ADCD VISION PLAN (OCEAN DR. CORRIDOR AND LUMMUS PARK ENHANCEMENT PROJECT):

- sometimes referred to as the 'long-term' project
- "a complex, multi-year endeavor that involves comprehensive design, permitting and construction"
- the 'long-term' project requires evaluations of all 3 ADCD options for Ocean Drive to FIRST obtain approval from BOTH Miami-Dade County and the Florida Dept of Transportation on the selected traffic configuration
- once the traffic studies are completed and agency approvals are obtained, site design and site engineering can begin

LIGHTING AND SIDEWALK IMPROVEMENTS:

- sometimes referred to as the 'short-term' project
- replacement of existing sidewalks and lighting improvements
- focuses on the importance of lighting and sidewalk improvements to enhance safety, accessibility, and aesthetics, and seeks to advance these enhancements



Objectives - 'Short Term' project

1. **Replace existing sidewalks**
no impacts to traffic geometries, drainage patterns,
or underground infrastructure
2. **Propose options for lighting along the west side of Ocean Drive**



Design Considerations

1. Enhance Safety and Accessibility
2. Cost of Implementation
3. Cost of Maintenance
4. Ease of Repair and Longevity
5. Sensitivity to Local Businesses



CITY OF MIAMI BEACH

OCEAN DRIVE | LIGHTING AND SIDEWALK IMPROVEMENTS

PUBLIC MEETING
MARCH 2025

Agenda

1. Discuss Paving Strategies and Approaches
2. Discuss the 'pros' and 'cons' of the various hardscape alternatives
3. Showcase proposed design options
4. Discuss lighting strategy for Ocean Drive



Basis of Design

01



CITY OF MIAMI BEACH

OCEAN DRIVE | LIGHTING AND SIDEWALK IMPROVEMENTS

PUBLIC MEETING
MARCH 2025

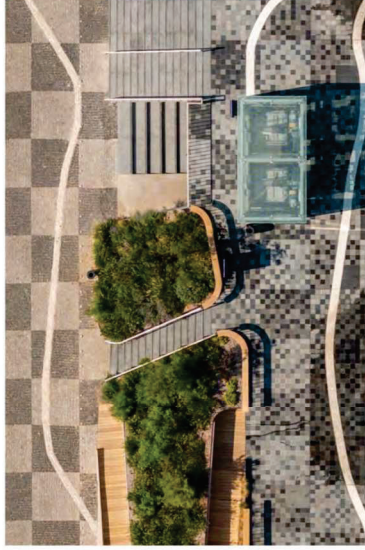
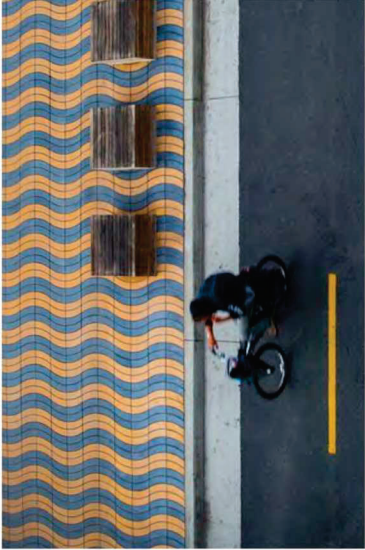
Paving Strategies and Approaches



CITY OF MIAMI BEACH

OCEAN DRIVE | LIGHTING AND SIDEWALK IMPROVEMENTS

PUBLIC MEETING
MARCH 2025



The Value of Paving Design



CITY OF MIAMI BEACH

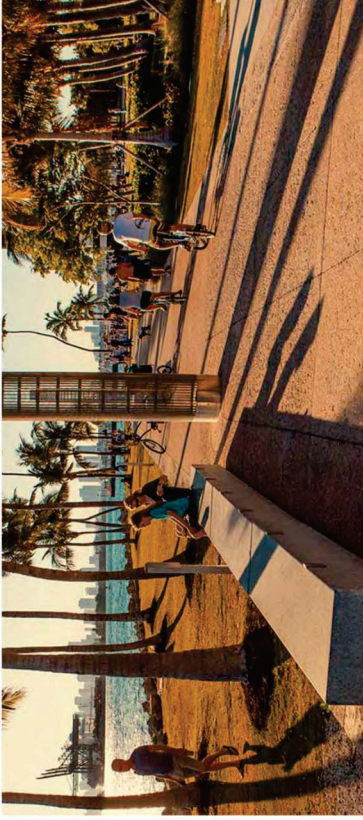
OCEAN DRIVE | LIGHTING AND SIDEWALK IMPROVEMENTS

PUBLIC MEETING
MARCH 2025

8

01 MODULE

BASIS OF DESIGN



Paving Precedents - Local



CITY OF MIAMI BEACH

OCEAN DRIVE | LIGHTING AND SIDEWALK IMPROVEMENTS

PUBLIC MEETING
MARCH 2025

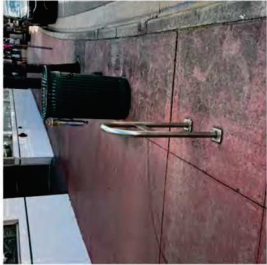
9

01 MODULE

BASIS OF DESIGN



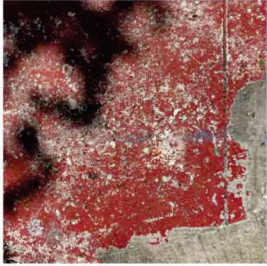
INTEGRAL COLOR
RED CONCRETE



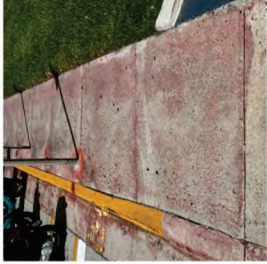
INTEGRAL COLOR
RED CONCRETE



INTEGRAL COLOR RED
CONCRETE WITH EXPOSED
SHELL AGGREGATE



NATURAL COLOR CONCRETE
WITH SURFACE PAINT



NATURAL COLOR CONCRETE
WITH SURFACE STAIN



NATURAL COLOR CONCRETE
SALT FINISH



COBBLESTONE PAVER



INTEGRAL COLORED
CONCRETE PAVER



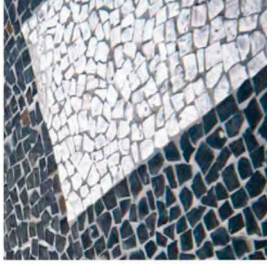
INTEGRAL COLORED
CONCRETE PAVER



INTEGRAL COLORED
CONCRETE PAVER



SQUARE GRANITE PAVER



PIEDRA PORTUGUESA

Paving Precedents - Local



'Pros' and 'Cons' of the various alternatives



CITY OF MIAMI BEACH

OCEAN DRIVE | LIGHTING AND SIDEWALK IMPROVEMENTS

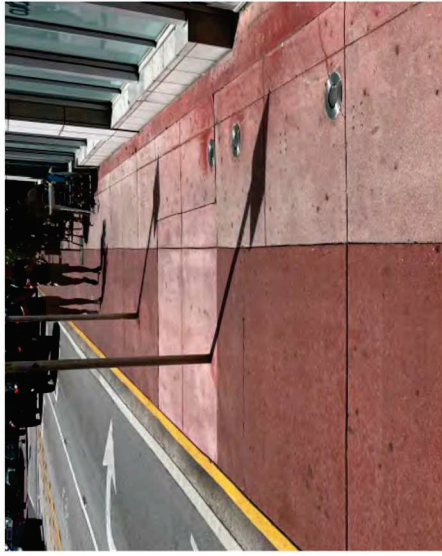
PUBLIC MEETING
MARCH 2025

11

01 MODULE

BASIS OF DESIGN

INTEGRAL COLORED CONCRETE



- Most widely used material
- Can be colored (Integral color preferred)
- Easy to repair and replace
- Easy to maintain via pressure washing
- Most inexpensive of all options
- Relatively fast to install
- Color will always fade, resulting in a patchwork when replaced
- Designs are subject to limitations of formwork

EXPOSED SHELL CONCRETE



- Refined application and appearance
- Can be colored (Integral color preferred)
- Relatively easy to maintain via pressure washing
- Requires skilled installers
- More difficult to repair and replace while keeping a seamless quality
- Color will always fade, resulting in a patchwork when replaced
- More prone to dirt accumulation
- Increased costs of installation

Paving Alternatives



CITY OF MIAMI BEACH

OCEAN DRIVE | LIGHTING AND SIDEWALK IMPROVEMENTS

PUBLIC MEETING
MARCH 2025

12

01 MODULE

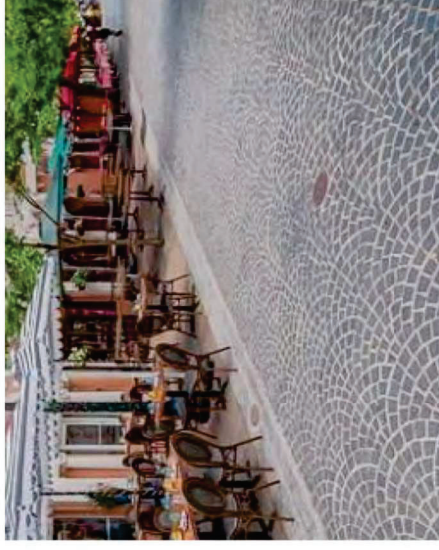
BASIS OF DESIGN

CONCRETE PAVERS



- Widely used and proven material throughout the City
- Available with exposed shell finish and in a variety of colors
- Relatively easy to maintain via pressure washing
- Generally repairs aren't needed for the first 5 years
- Can accommodate intricate designs
- Can be easily repaired by City Staff
- Color will fade, resulting in a patchwork when replaced
- Excessively intricate designs can result in many 'cut' pieces
- Intricate designs need more maintenance

COBBLESTONE



- Relatively easy to maintain via pressure washing
- Unique character that is more traditional & historic-leaning
- Design options are more restrictive
- Material requires a lot of maintenance
- Staff has noted that it is very difficult to get repairs to be seamless
- Requires greater skill for repair

PEDRA PORTUGUESA



- Intricate patterns can be achieved by varying the sizes of the stones
- Colors are limited to what can be supplied
- Very difficult to repair and replace
- Requires highly-skilled installers to achieve seamless look
- Concerns about slip-and-fall due to the polished finish on the stone
- Large grout joints show patchwork where repairs are done
- Difficulty to achieve a smooth, flat surface for tables and chairs
- Very expensive



CITY OF MIAMI BEACH

OCEAN DRIVE | LIGHTING AND SIDEWALK IMPROVEMENTS

PUBLIC MEETING

MARCH 2025

13

CONCRETE PAVERS



- Widely used and proven material throughout the City
- Available with exposed shell finish and in a variety of colors
- Relatively easy to maintain via pressure washing
- Generally repairs aren't needed for the first 5 years
- Can accommodate intricate designs
- Can be easily repaired by City Staff
- *Color will fade, resulting in a patchwork when replaced*
- *Excessively intricate designs can result in many 'cut' pieces*
- *Intricate designs need more maintenance*



Material Recommendation



CITY OF MIAMI BEACH

OCEAN DRIVE | LIGHTING AND SIDEWALK IMPROVEMENTS

PUBLIC MEETING
MARCH 2025

14

01 MODULE

BASIS OF DESIGN

Proposed Alternatives

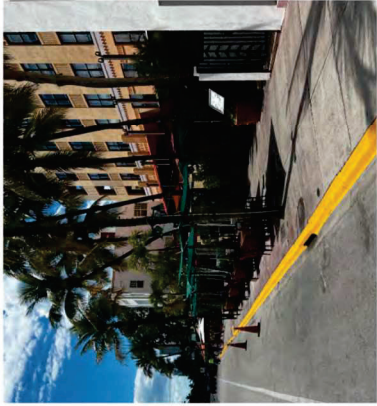
02



CITY OF MIAMI BEACH

OCEAN DRIVE | LIGHTING AND SIDEWALK IMPROVEMENTS

PUBLIC MEETING
MARCH 2025



Existing sidewalks

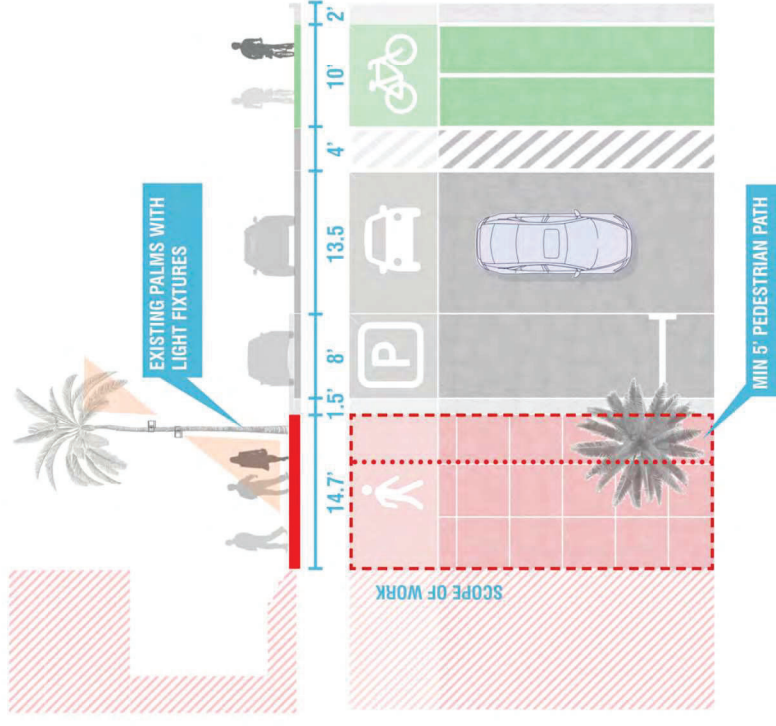


CITY OF MIAMI BEACH

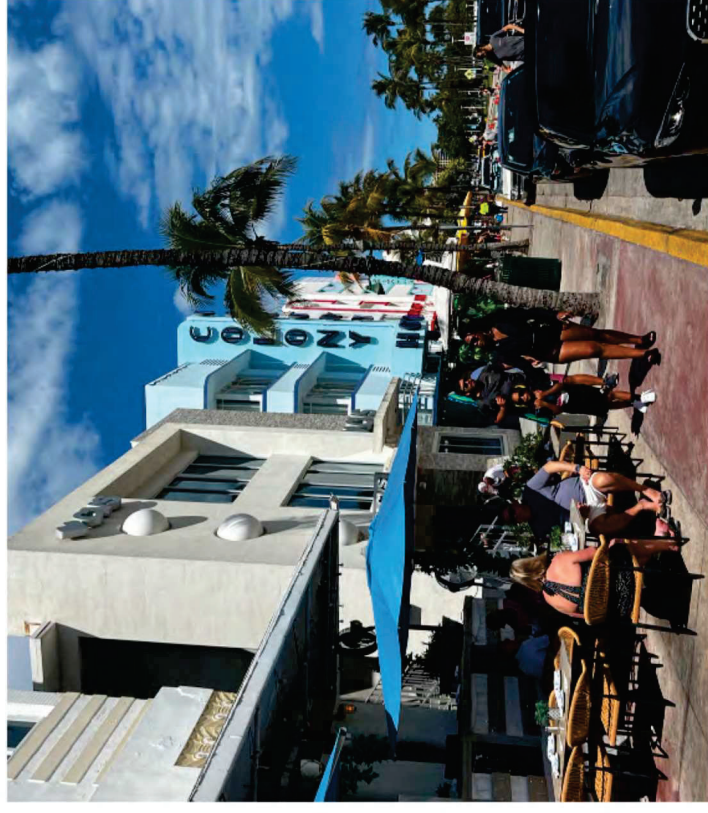
OCEAN DRIVE | LIGHTING AND SIDEWALK IMPROVEMENTS

PUBLIC MEETING
MARCH 2025

EXISTING SECTION



EXISTING CONDITION



Existing sidewalks



CITY OF MIAMI BEACH

OCEAN DRIVE | LIGHTING AND SIDEWALK IMPROVEMENTS

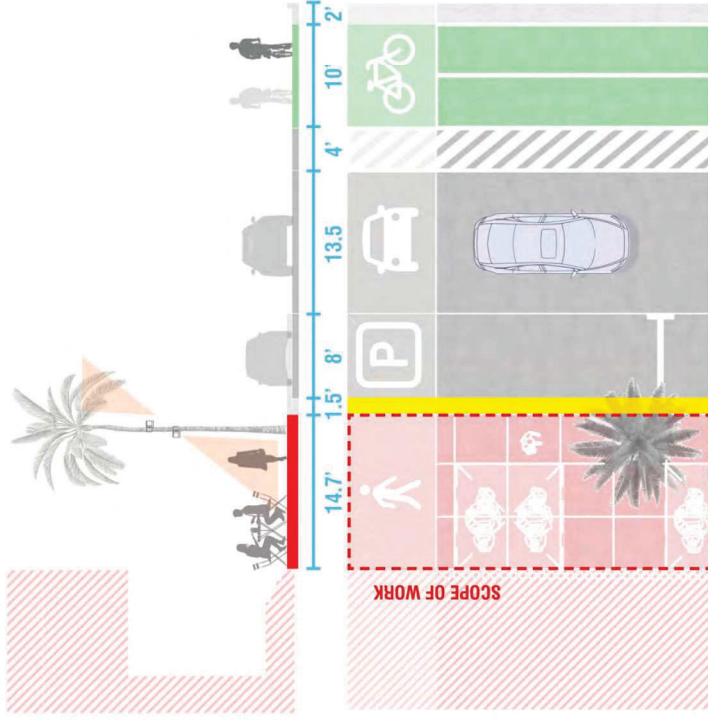
PUBLIC MEETING
MARCH 2025

17

02MODULE

PROPOSED ALTERNATIVES

EXISTING SECTION



EXISTING CONDITION



Existing sidewalks



CITY OF MIAMI BEACH

OCEAN DRIVE | LIGHTING AND SIDEWALK IMPROVEMENTS

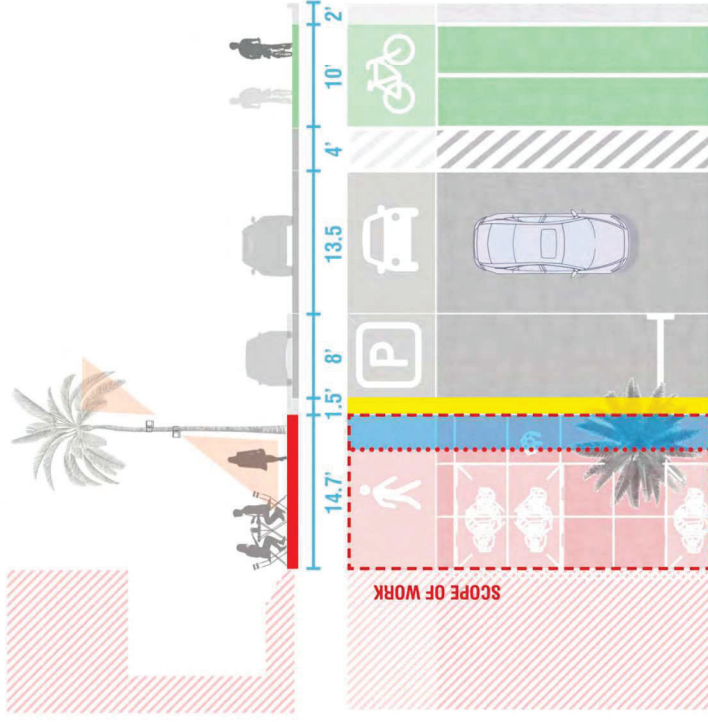
PUBLIC MEETING
MARCH 2025

18

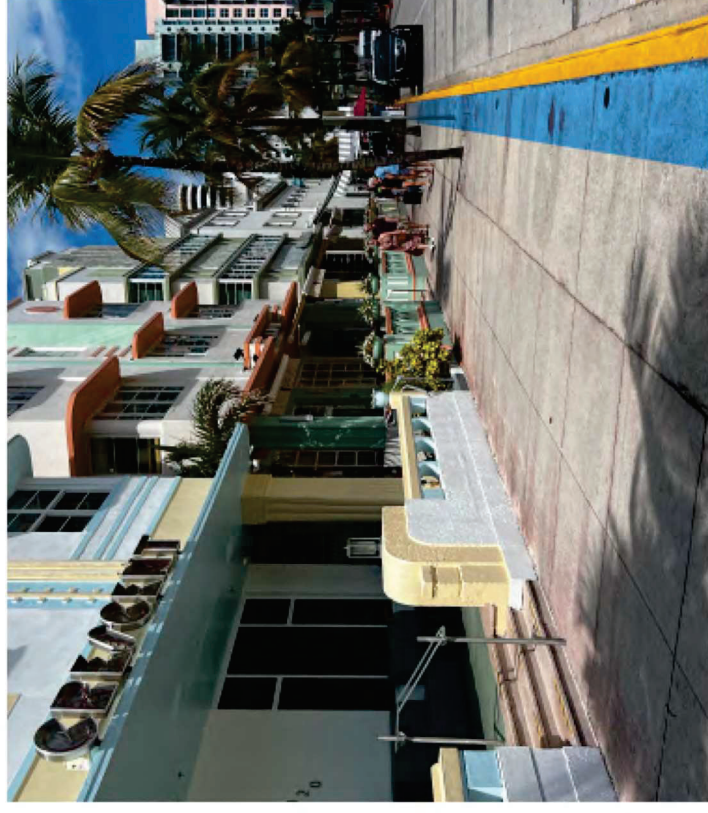
02MODULE

PROPOSED ALTERNATIVES

EXISTING SECTION



EXISTING CONDITION



Existing sidewalks

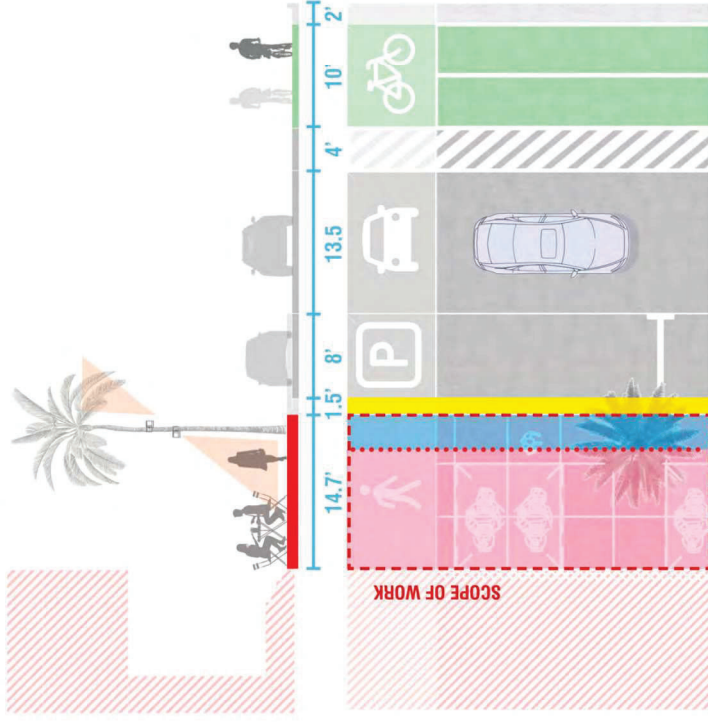


CITY OF MIAMI BEACH

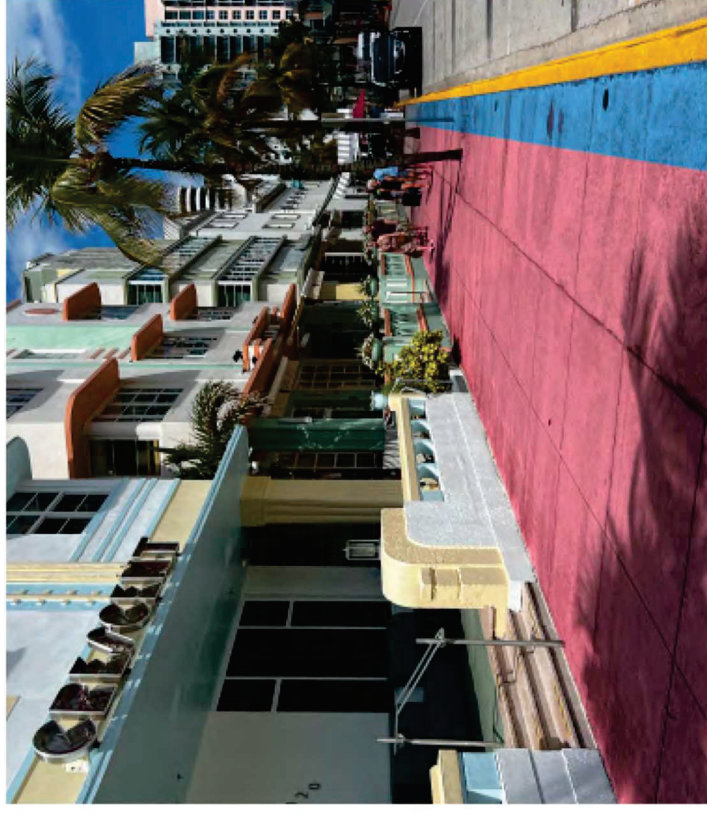
OCEAN DRIVE | LIGHTING AND SIDEWALK IMPROVEMENTS

PUBLIC MEETING
MARCH 2025

EXISTING SECTION



EXISTING CONDITION



Existing sidewalks

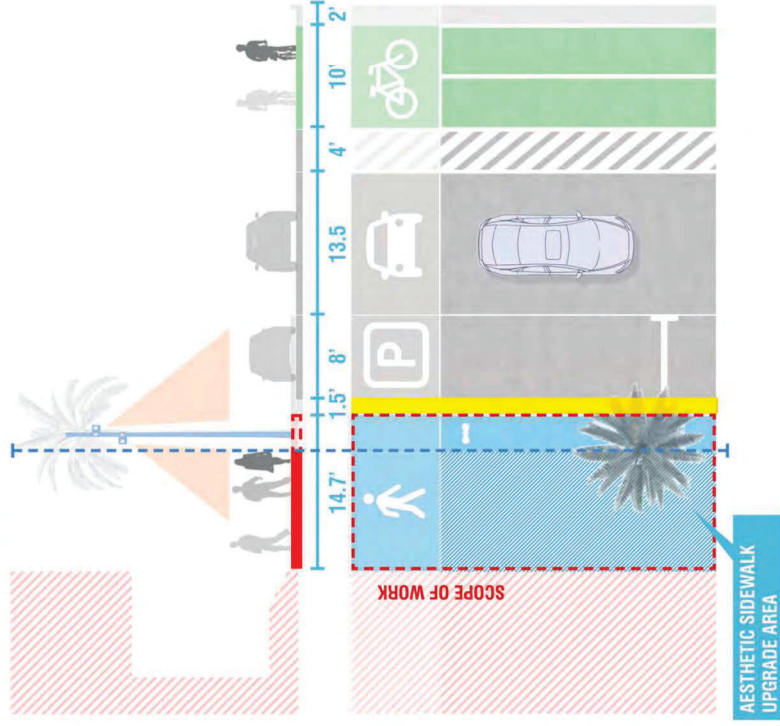


CITY OF MIAMI BEACH

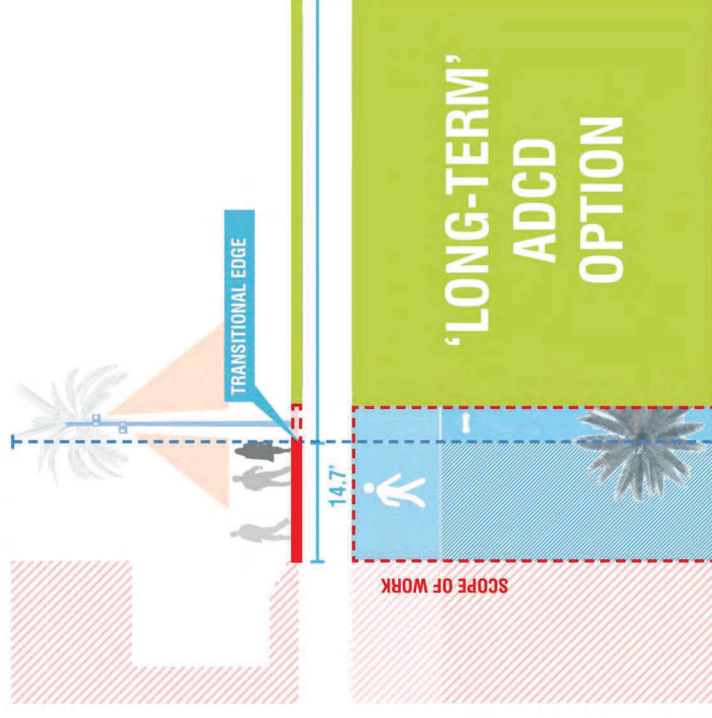
OCEAN DRIVE | LIGHTING AND SIDEWALK IMPROVEMENTS

PUBLIC MEETING
MARCH 2025

PROPOSED SECTION



PROPOSED SECTION



Proposed sidewalks

'LONG-TERM'
ADCDC
OPTION

SINGLE BLOCK DIAGRAM



PROPOSED ALTERNATIVES

02MODULE

22

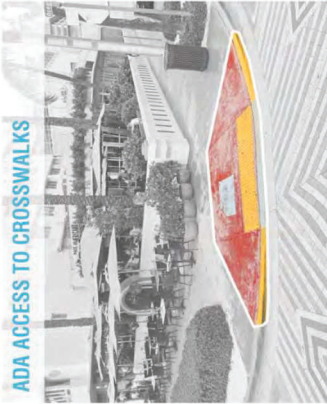
PUBLIC MEETING
MARCH 2025

OCEAN DRIVE | LIGHTING AND SIDEWALK IMPROVEMENTS



CITY OF MIAMI BEACH

ADA ACCESS TO CROSSWALKS



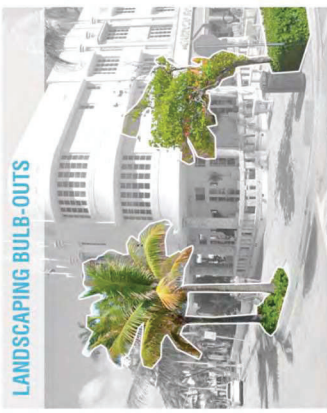
UTILITY POLES



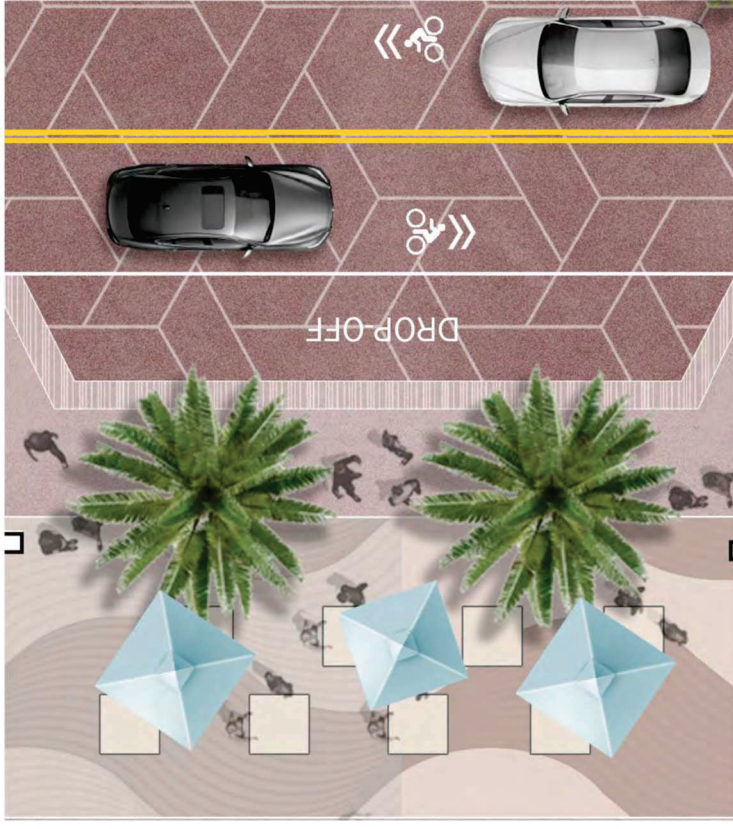
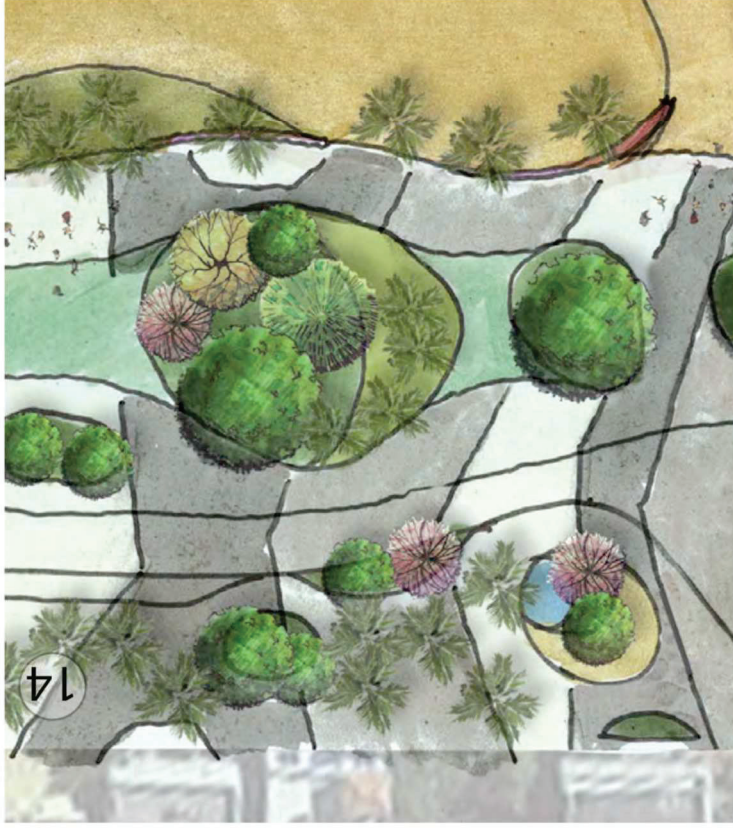
VEHICULAR TRAFFIC SIGNALIZATION



LANDSCAPING BULB-OUTS



Typical corner condition



ADCD Vision Plan - Paving

PROPOSED ALTERNATIVES

02MODULE

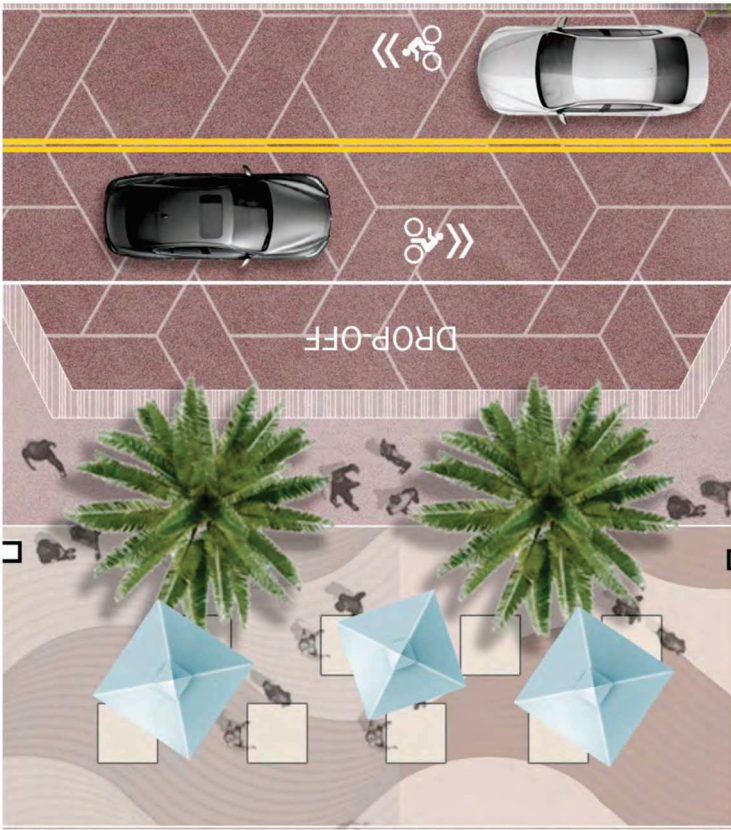
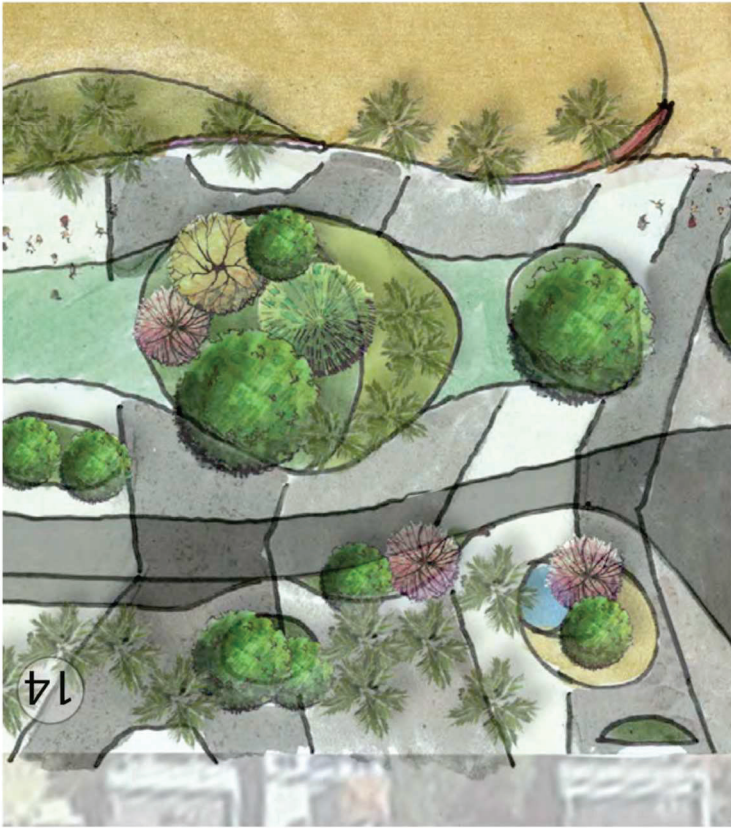
23

PUBLIC MEETING
MARCH 2025

OCEAN DRIVE | LIGHTING AND SIDEWALK IMPROVEMENTS



CITY OF MIAMI BEACH



ADCD Vision Plan - Paving

02MODULE

PROPOSED ALTERNATIVES



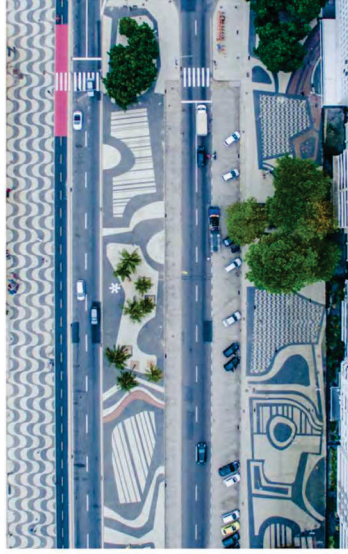
CITY OF MIAMI BEACH

OCEAN DRIVE | LIGHTING AND SIDEWALK IMPROVEMENTS

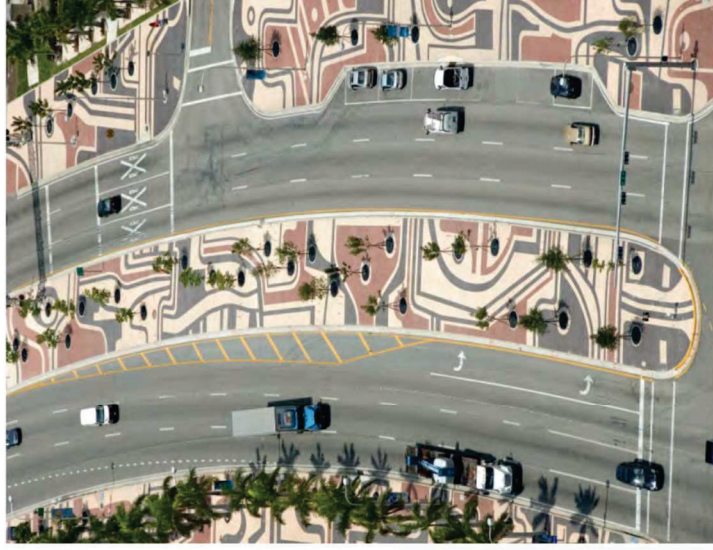
PUBLIC MEETING
MARCH 2025

24

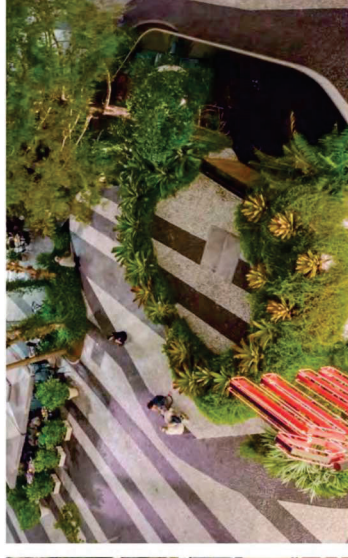
COPACABANA



BISCAYNE BOULEVARD



LINCOLN ROAD (1100 BLOCK)



ADCD MASTERPLAN



Paving Precedents - Local



CITY OF MIAMI BEACH

OCEAN DRIVE | LIGHTING AND SIDEWALK IMPROVEMENTS

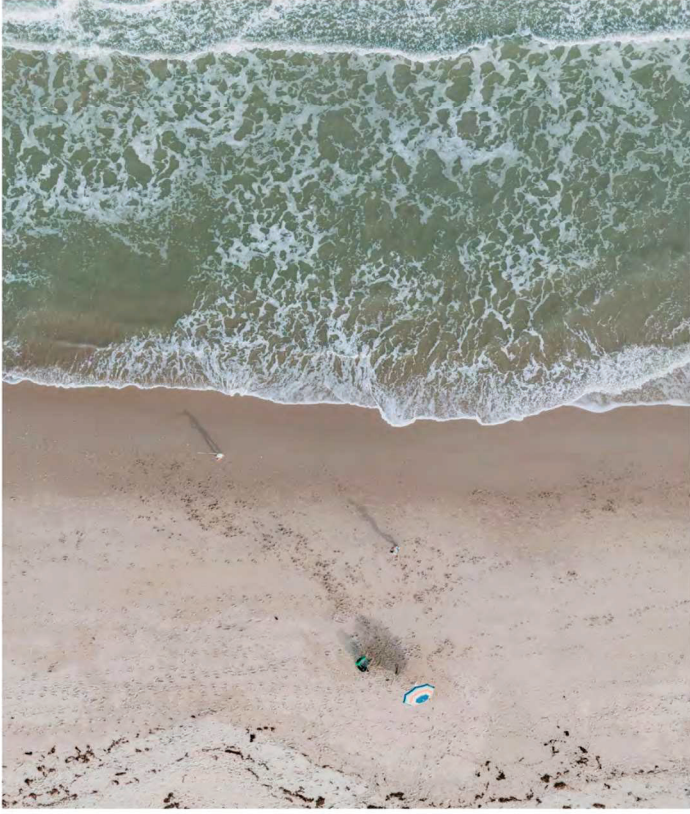
PUBLIC MEETING
MARCH 2025

25

01 MODULE

BASIS OF DESIGN

ATLANTIC OCEAN



MIAMI BEACH ART DECO



Design inspiration

PROPOSED ALTERNATIVES

02MODULE

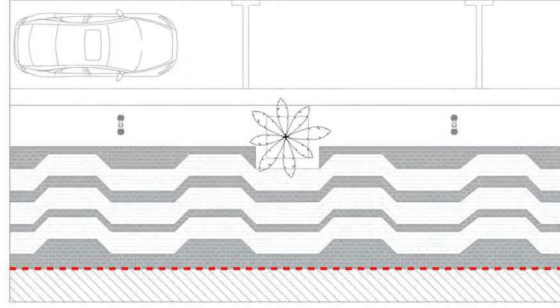


CITY OF MIAMI BEACH

OCEAN DRIVE | LIGHTING AND SIDEWALK IMPROVEMENTS

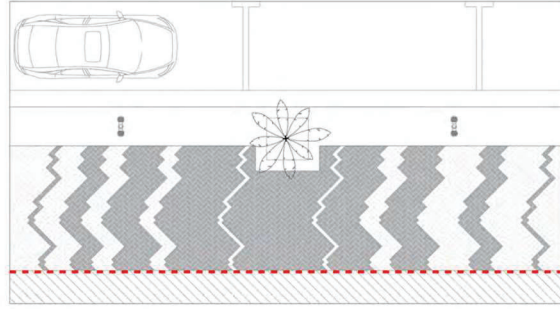
PUBLIC MEETING
MARCH 2025

OPTION 01



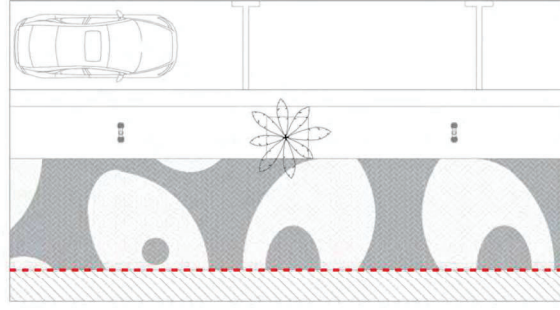
SOLDIER COURSE PATTERN

OPTION 02



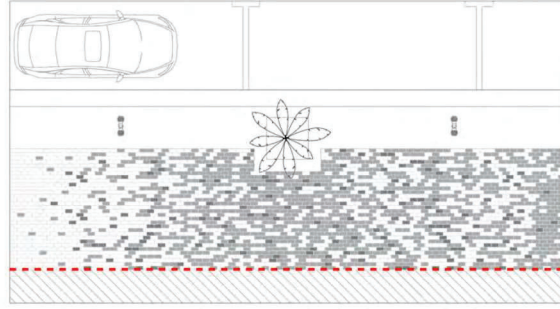
HERRINGBONE PATTERN

OPTION 03



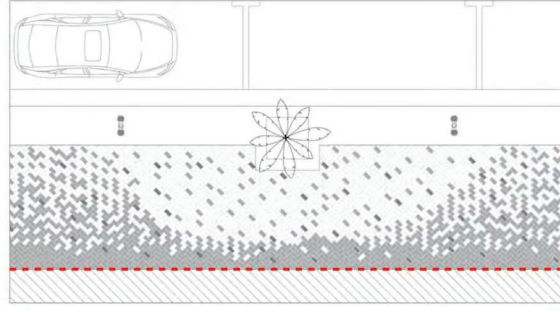
HERRINGBONE PATTERN

OPTION 04



SOLDIER COURSE RANDOMIZED

OPTION 05



HERRINGBONE PATTERN RANDOMIZED

PROPOSED ALTERNATIVES

02MODULE

Paving patterns modules



CITY OF MIAMI BEACH

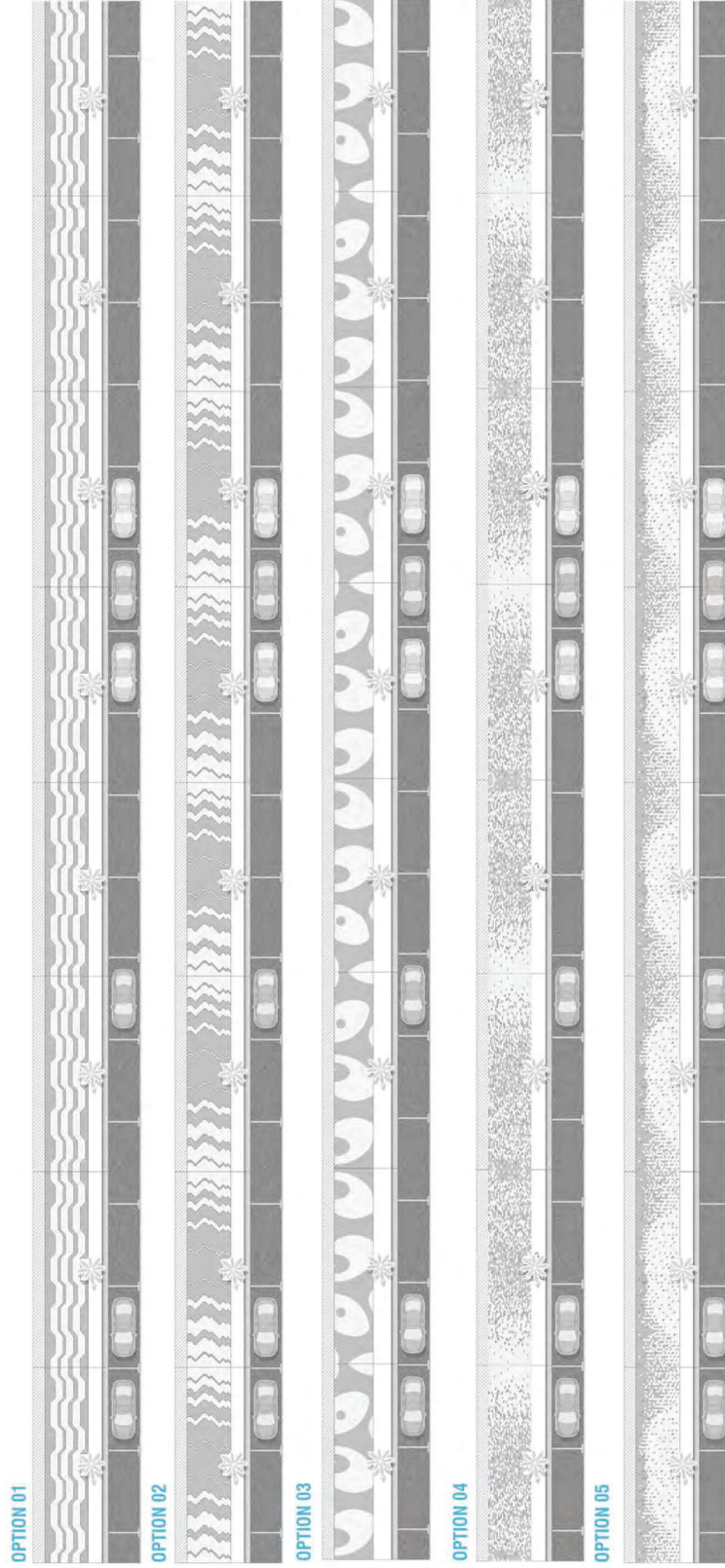
OCEAN DRIVE | LIGHTING AND SIDEWALK IMPROVEMENTS

PUBLIC MEETING

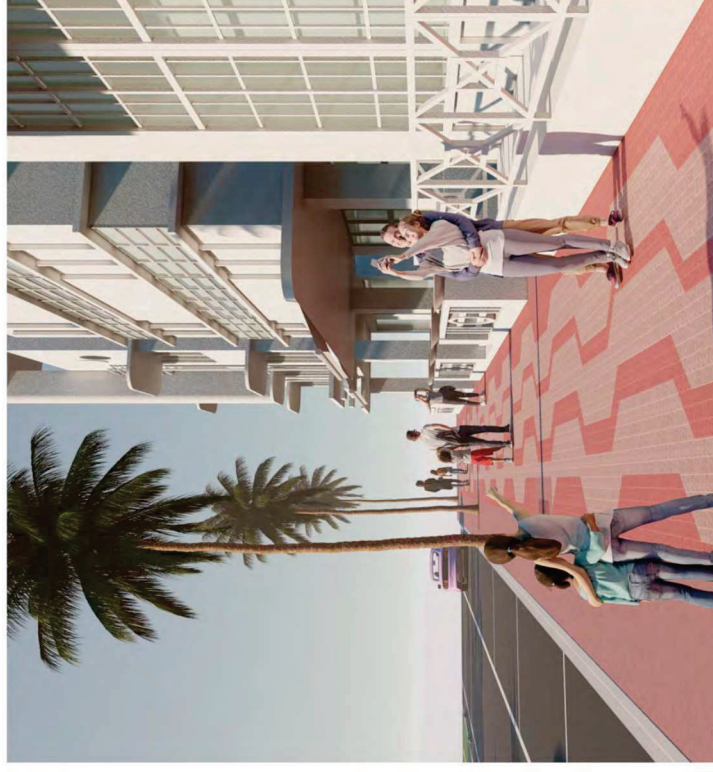
MARCH 2025



Paving patterns modules



OPTION 01 B
SOLDIER COURSE/ PAVERS 4"X8"



CITY OF MIAMI BEACH

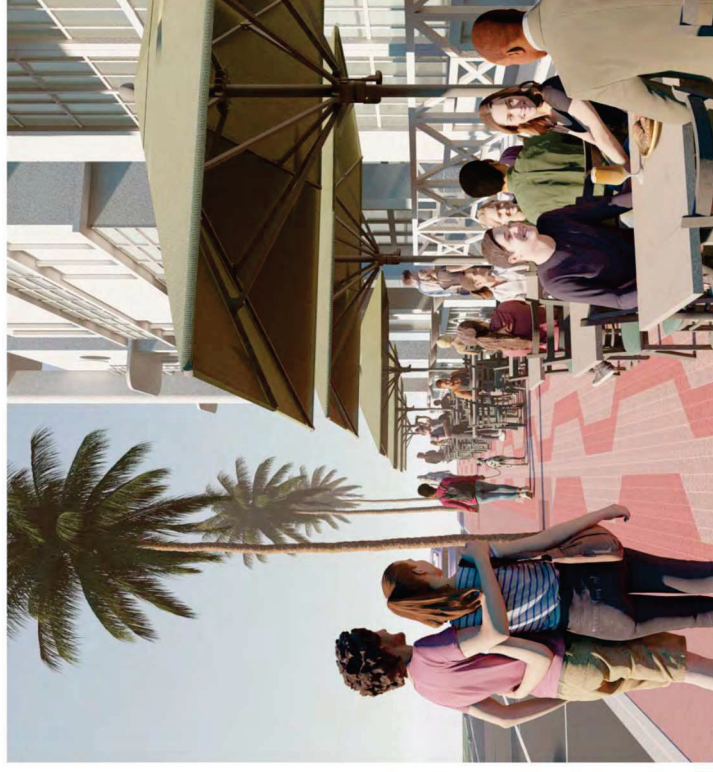
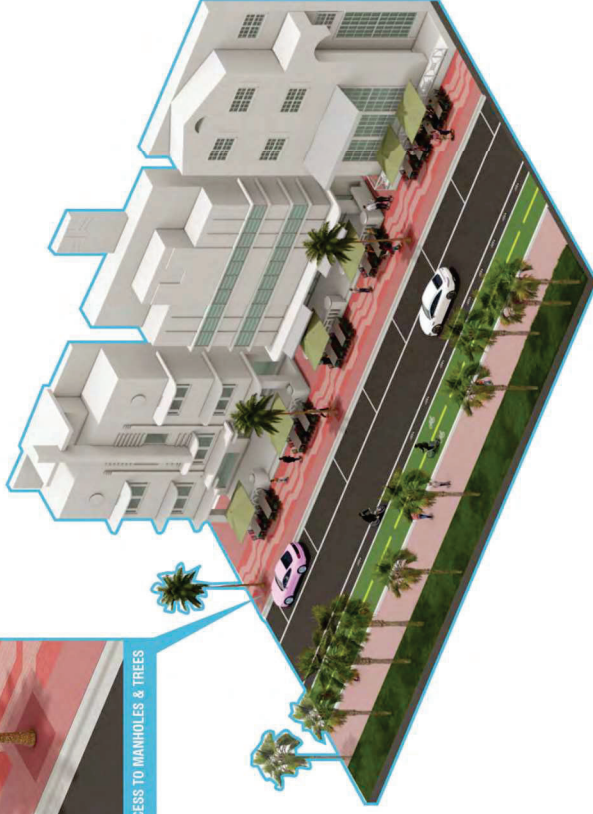
OCEAN DRIVE | LIGHTING AND SIDEWALK IMPROVEMENTS

PUBLIC MEETING
MARCH 2025

OPTION 01 SEATING
SOLDIER COURSE/ PAVERS 4"X8"



ACCESS TO MANHOLES & TREES

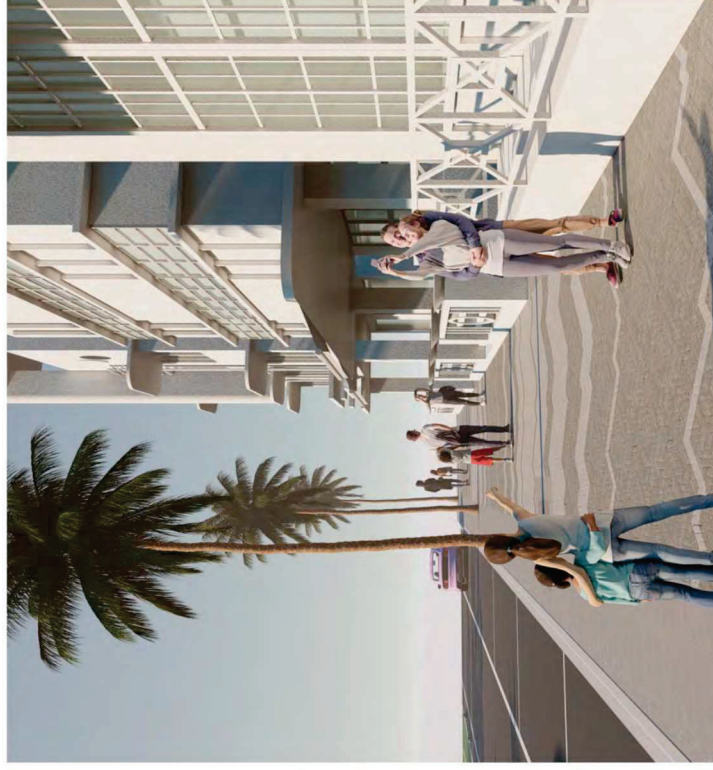
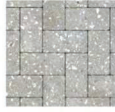


CITY OF MIAMI BEACH

OCEAN DRIVE | LIGHTING AND SIDEWALK IMPROVEMENTS

PUBLIC MEETING
MARCH 2025

OPTION 02 A
HERRINGBONE PATTERN/ PAVERS 4"X8"

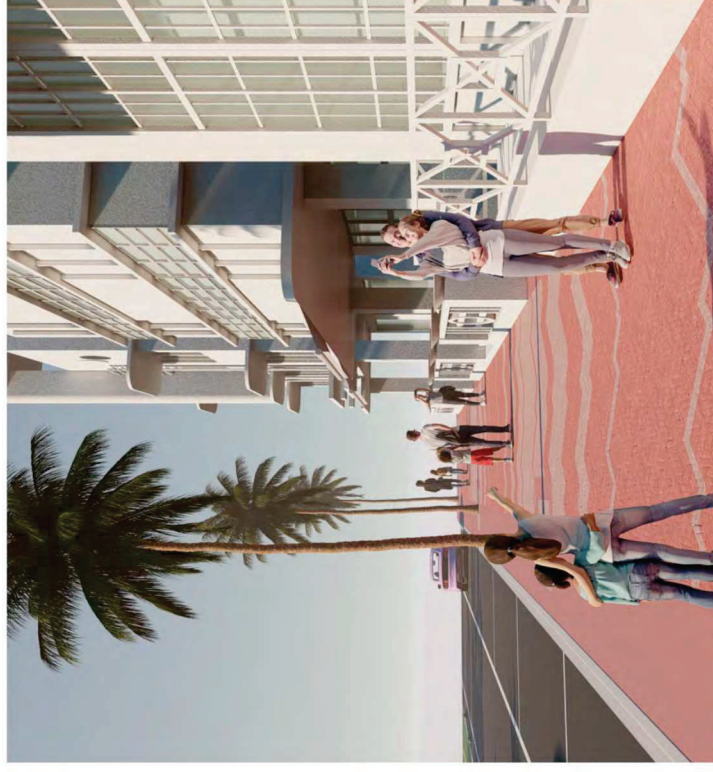


CITY OF MIAMI BEACH

OCEAN DRIVE | LIGHTING AND SIDEWALK IMPROVEMENTS

PUBLIC MEETING
MARCH 2025

OPTION 02 B
HERRINGBONE PATTERN/ PAVERS 4"X8"



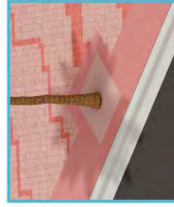
CITY OF MIAMI BEACH

OCEAN DRIVE | LIGHTING AND SIDEWALK IMPROVEMENTS

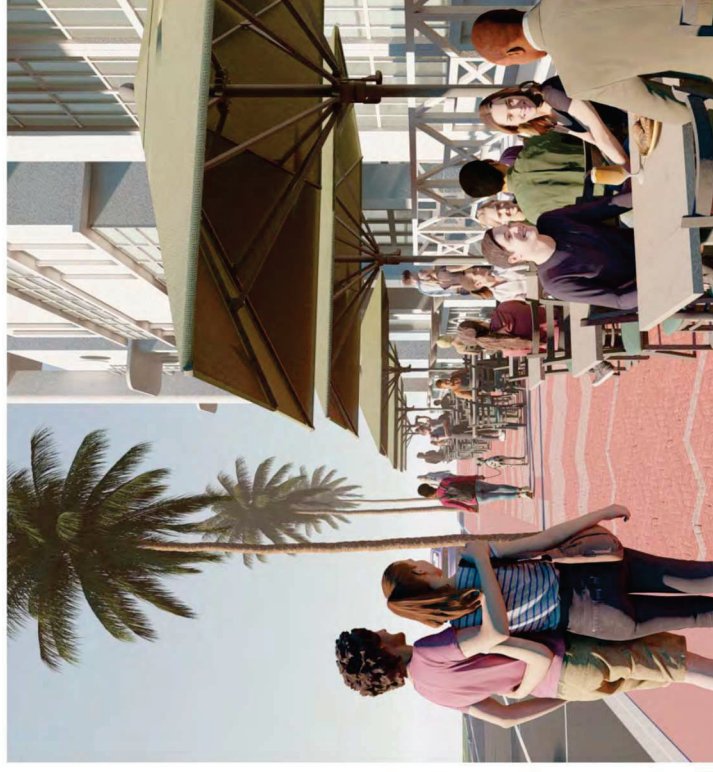
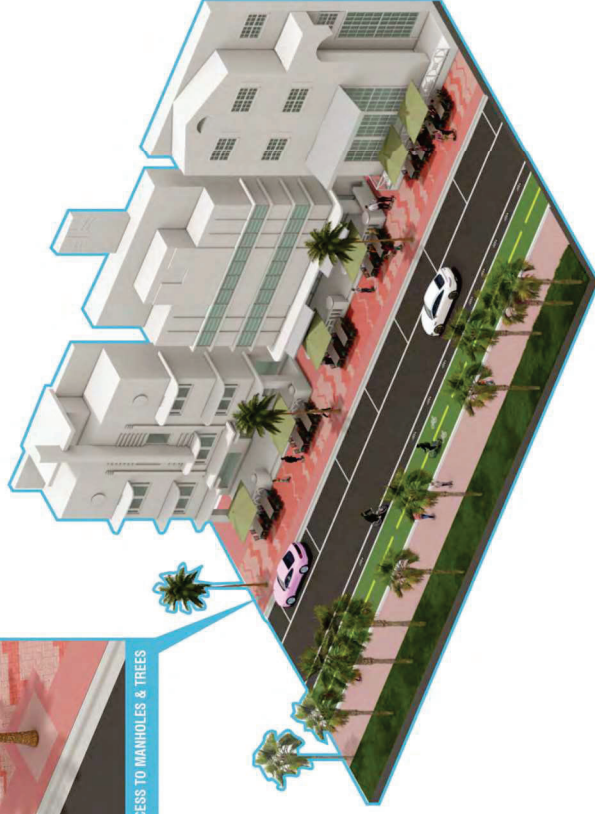
PUBLIC MEETING
MARCH 2025

OPTION 02 SEATING

HERRINGBONE PATTERN/ PAVERS 4"X8"



ACCESS TO MANHOLES & TREES



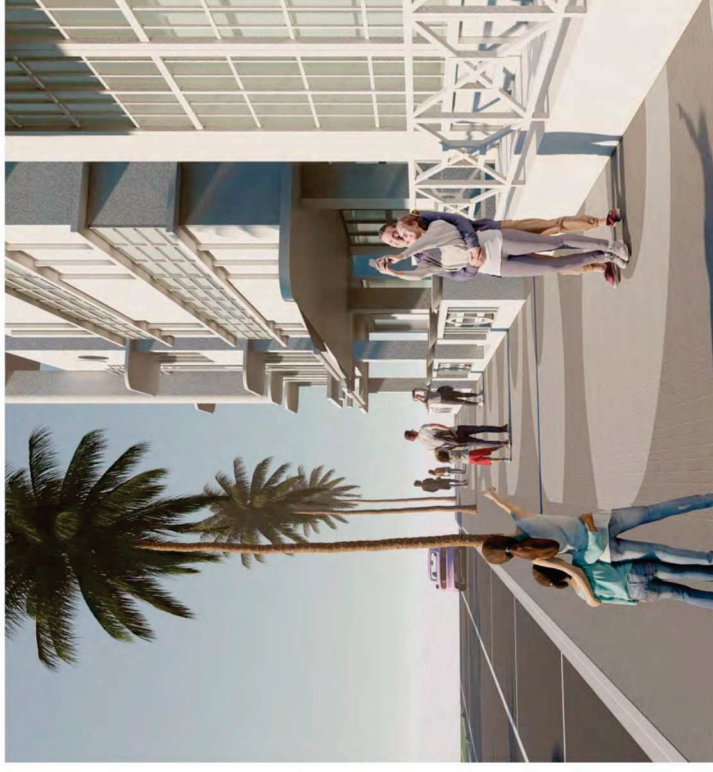
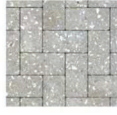
CITY OF MIAMI BEACH

OCEAN DRIVE | LIGHTING AND SIDEWALK IMPROVEMENTS

PUBLIC MEETING
MARCH 2025

OPTION 03 A

HERRINGBONE PATTERN / PAVERS 4"X8"



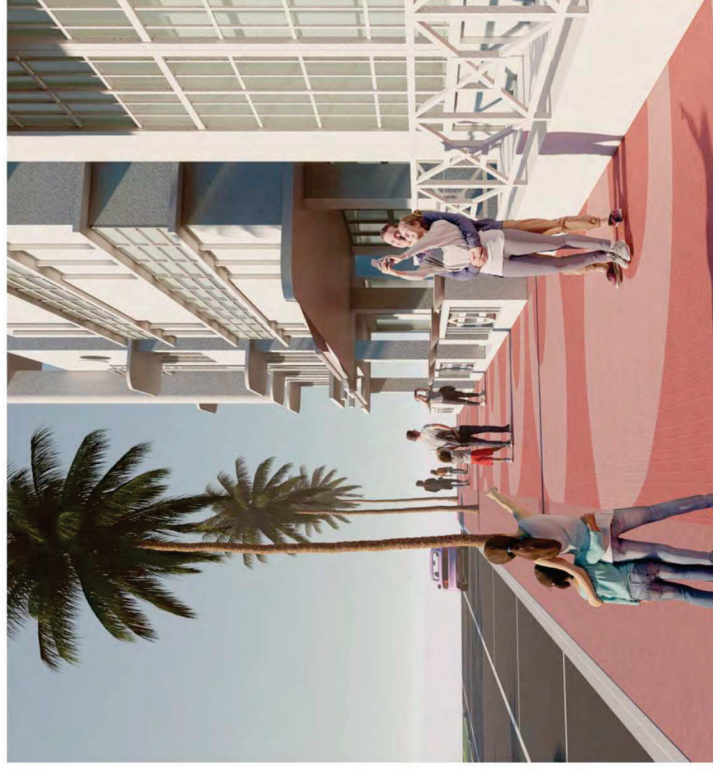
CITY OF MIAMI BEACH

OCEAN DRIVE | LIGHTING AND SIDEWALK IMPROVEMENTS

PUBLIC MEETING
MARCH 2025

OPTION 03 B

HERRINGBONE PATTERN / PAVERS 4"X8"



CITY OF MIAMI BEACH

OCEAN DRIVE | LIGHTING AND SIDEWALK IMPROVEMENTS

PUBLIC MEETING
MARCH 2025

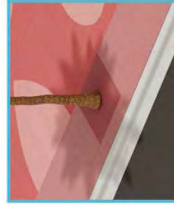
36

02MODULE

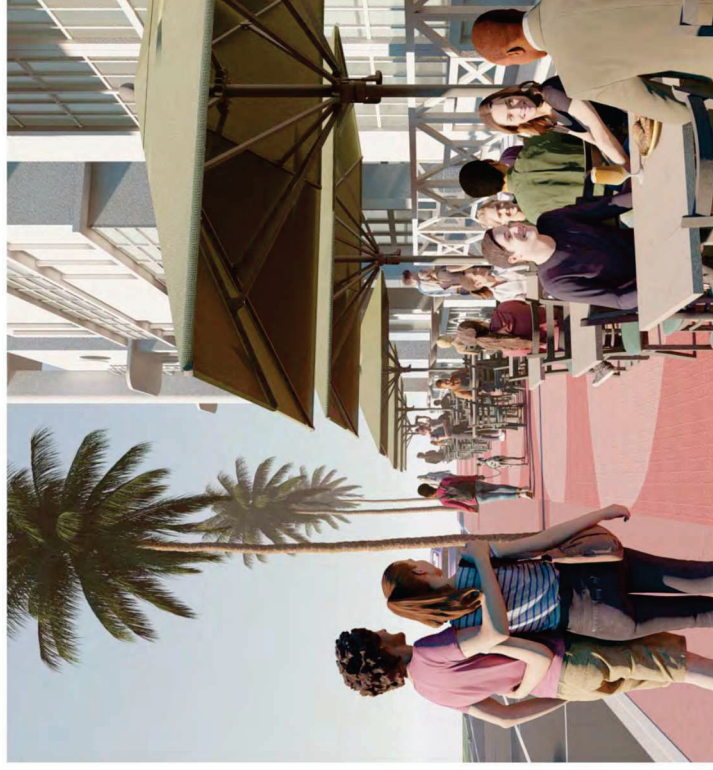
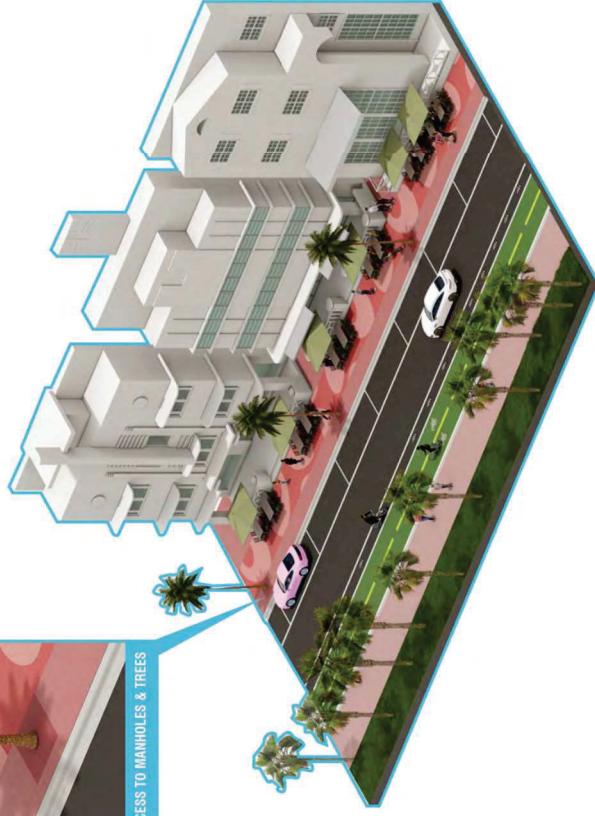
PROPOSED ALTERNATIVES

OPTION 03 SEATING

HERRINGBONE PATTERN/ PAVERS 4"X8"



ACCESS TO MANHOLES & TREES

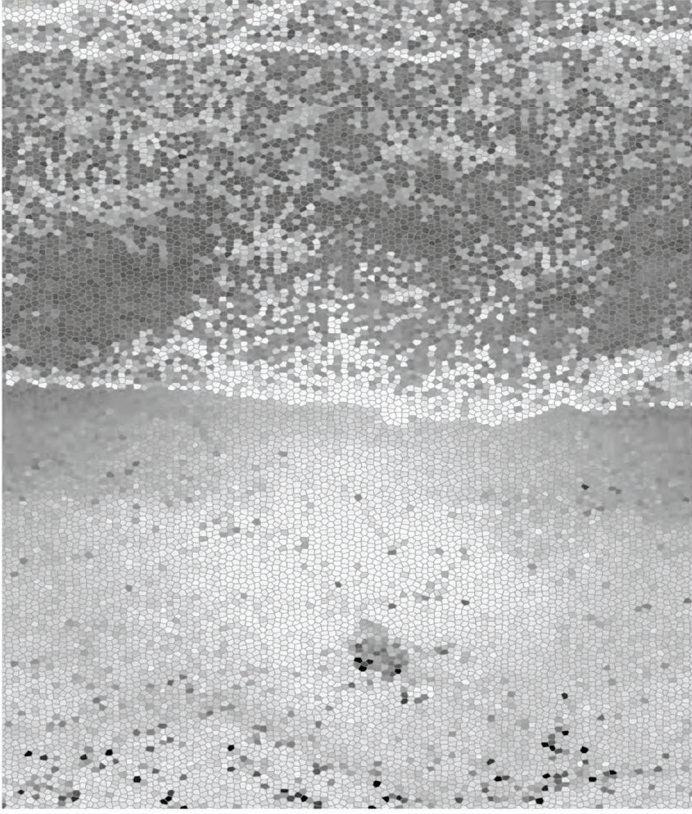


CITY OF MIAMI BEACH

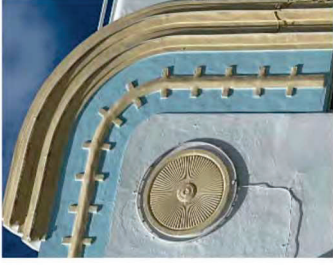
OCEAN DRIVE | LIGHTING AND SIDEWALK IMPROVEMENTS

PUBLIC MEETING
MARCH 2025

ATLANTIC OCEAN



MIAMI BEACH ART DECO



Design inspiration

PROPOSED ALTERNATIVES

02MODULE

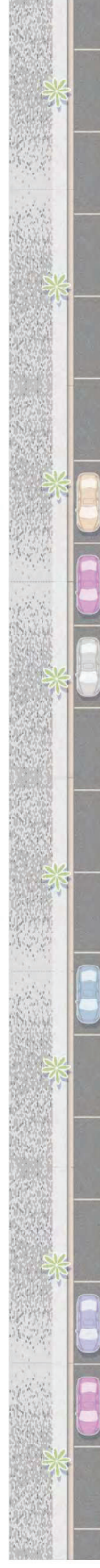
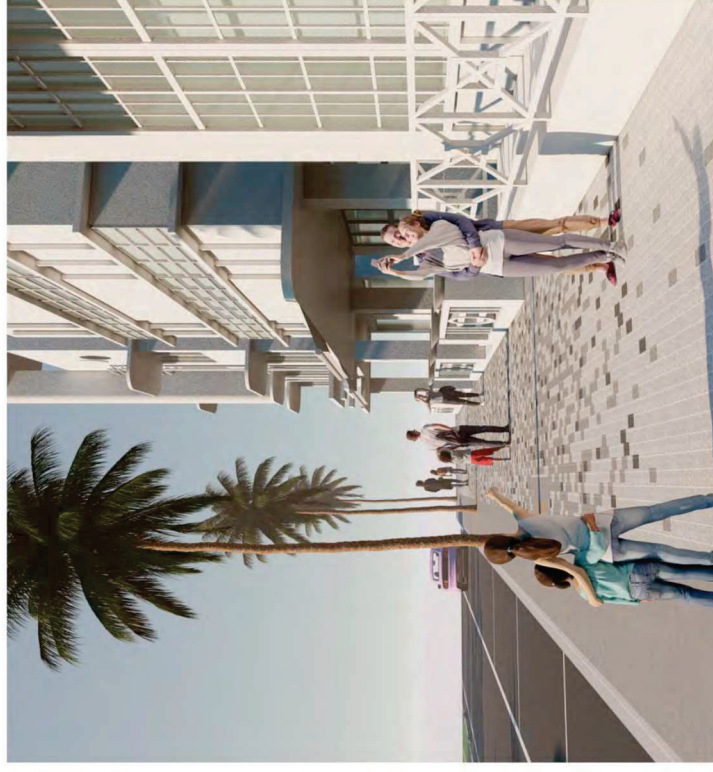


CITY OF MIAMI BEACH

OCEAN DRIVE | LIGHTING AND SIDEWALK IMPROVEMENTS

PUBLIC MEETING
MARCH 2025

OPTION 04 A
SOLDIER COURSE/ PAVERS 4"X8"

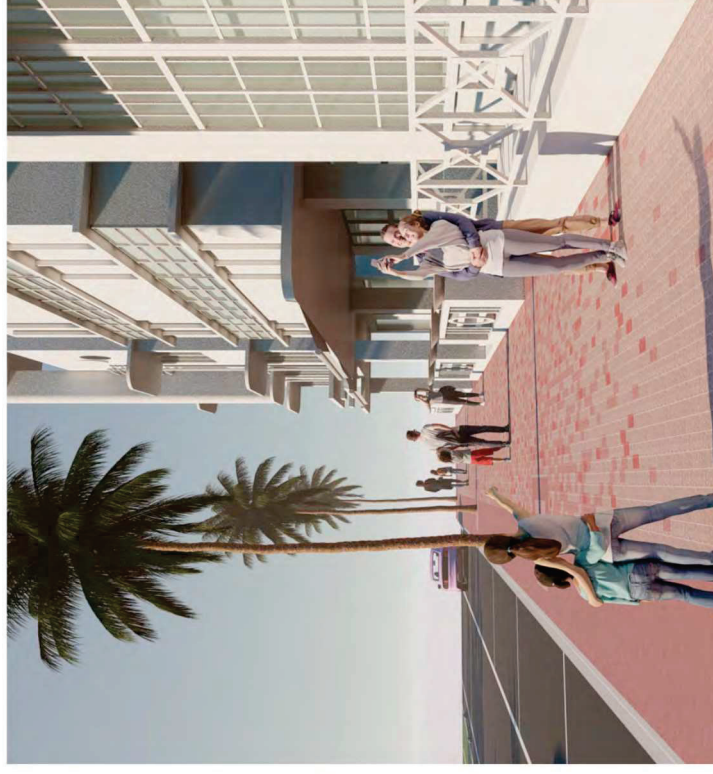


CITY OF MIAMI BEACH

OCEAN DRIVE | LIGHTING AND SIDEWALK IMPROVEMENTS

PUBLIC MEETING
MARCH 2025

OPTION 04 B
SOLDIER COURSE/ PAVERS 4"X8"



CITY OF MIAMI BEACH

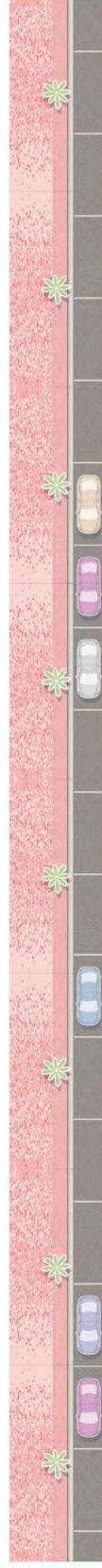
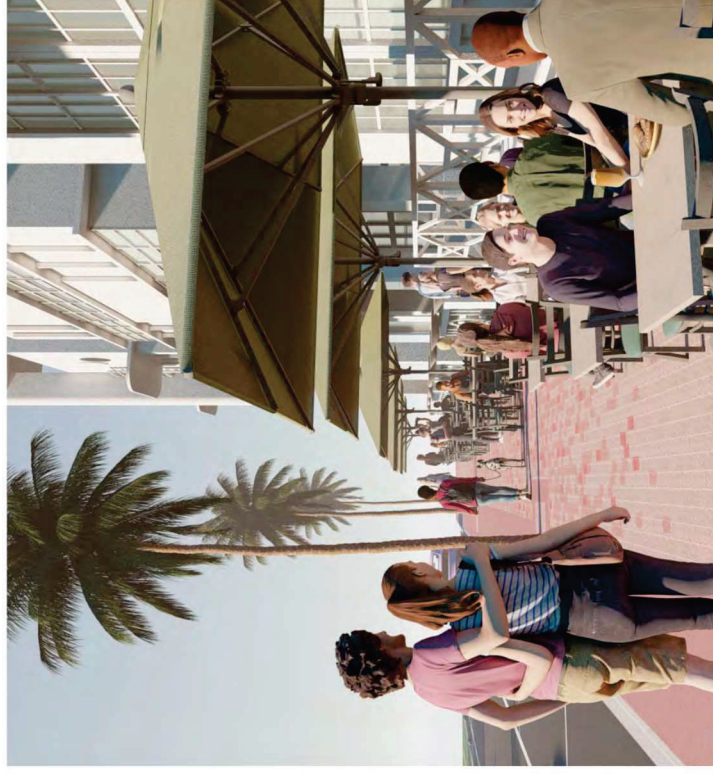
OCEAN DRIVE | LIGHTING AND SIDEWALK IMPROVEMENTS

PUBLIC MEETING
MARCH 2025

OPTION 04 SEATING
SOLDIER COURSE/ PAVERS 4"X8"



ACCESS TO MANHOLES & TREES

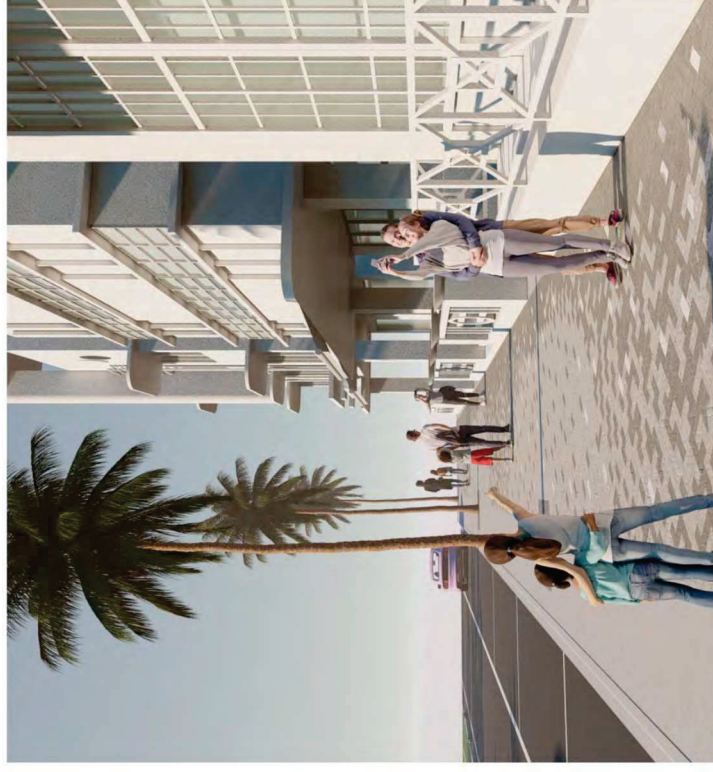


CITY OF MIAMI BEACH

OCEAN DRIVE | LIGHTING AND SIDEWALK IMPROVEMENTS

PUBLIC MEETING
MARCH 2025

OPTION 05 A
HERRINGBONE PATTERN/ PAVERS 4"X8"

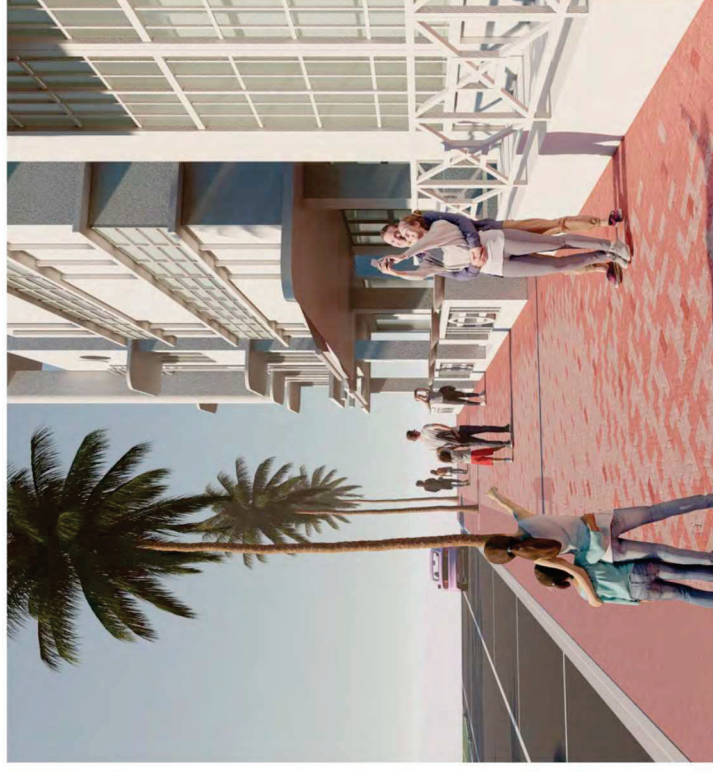
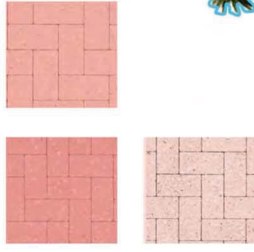


CITY OF MIAMI BEACH

OCEAN DRIVE | LIGHTING AND SIDEWALK IMPROVEMENTS

PUBLIC MEETING
MARCH 2025

OPTION 05 B
HERRINGBONE PATTERN/ PAVERS 4"X8"



CITY OF MIAMI BEACH

OCEAN DRIVE | LIGHTING AND SIDEWALK IMPROVEMENTS

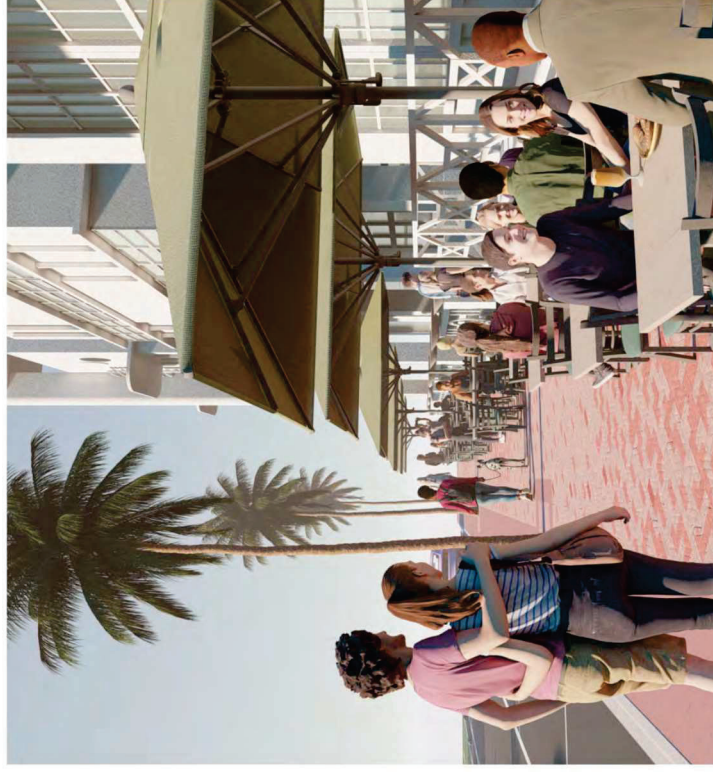
PUBLIC MEETING
MARCH 2025

OPTION 05 SEATING

HERRINGBONE PATTERN/ PAVERS 4"X8"



ACCESS TO MANHOLES & TREES



CITY OF MIAMI BEACH

OCEAN DRIVE | LIGHTING AND SIDEWALK IMPROVEMENTS

PUBLIC MEETING
MARCH 2025

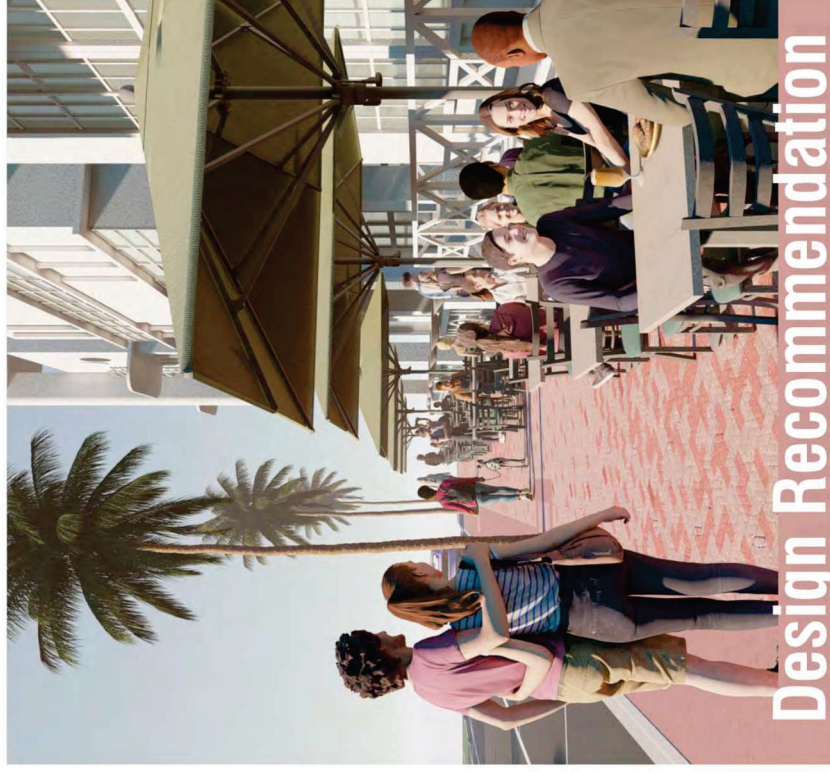
OPTION 05 SEATING
 HERRINGBONE PATTERN/ PAVERS 4"X8"



ACCESS TO MANHOLES & TREES



CITY OF MIAMI BEACH



Discuss lighting strategy for Ocean Drive



CITY OF MIAMI BEACH

OCEAN DRIVE | LIGHTING AND SIDEWALK IMPROVEMENTS

PUBLIC MEETING
MARCH 2025

46

02MODULE

PROPOSED ALTERNATIVES

Turn

Design: FRIS & MOUTKE Design

Turn by Fris & Moutke Design is a new brand in the Focus program.

The luminaires in cast aluminium have silk-edged shades in clear glass. The housing is completed by a long ring in cast aluminium or a short, opal-white acrylic ring.

Turn is available as a spot with reflector or with optics for asymmetrical light.

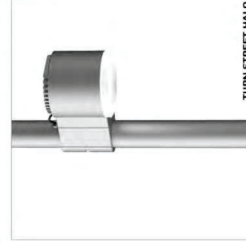


Turn Spot is equipped with a long ring in cast aluminium for cut-off and anti-glare.

Turn Spot Halo is equipped with a short, opal-white acrylic ring, opening the luminaire and offering optical guidance.

Both spots are equipped with reflector and LED optics for asymmetrical light. The angles: narrow (12°), medium (19°), and wide (36°).

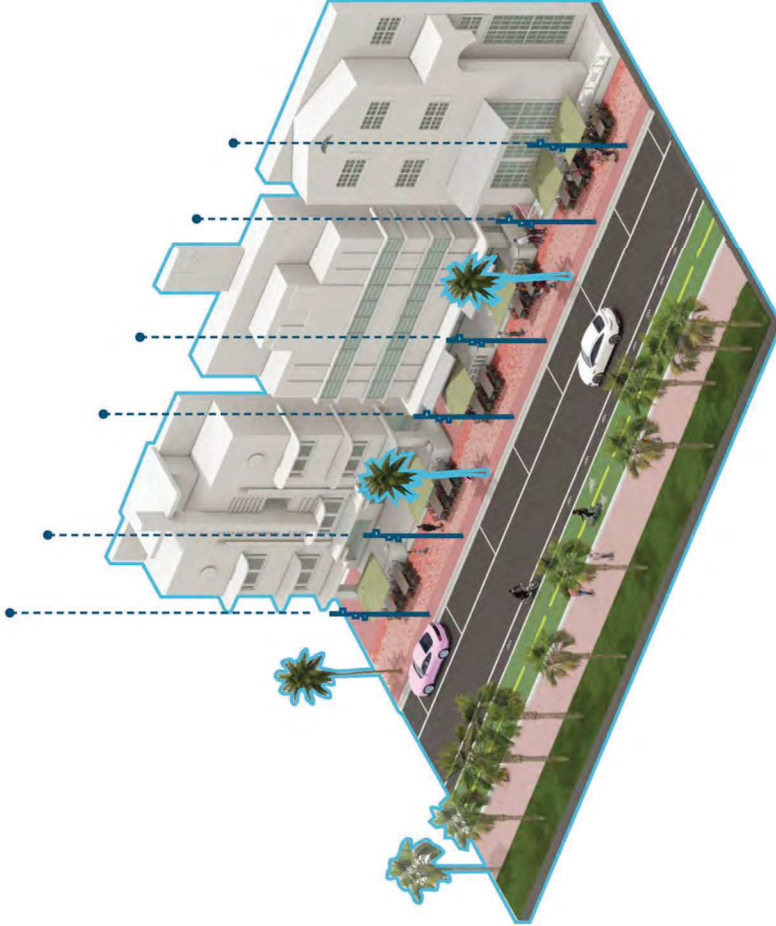
The spots can be adjusted horizontally around the post and vertically in the bracket. When holes have been bored in the post, the spots can be turned 90 degrees to both sides.



Turn Street Halo is available in one version only. The casing with the short, opal-white ring opens up for asymmetrical light onto cycling lanes and pedestrian areas.

The street luminaire will be equipped with programmed LED and lenses for asymmetrical light.

Find our sales partner in your country under Contacts at www.focus-lighting.dk



PROPOSED ALTERNATIVES

02MODULE

47

FOCUS-LIGHTING

PUBLIC MEETING
MARCH 2025

OCEAN DRIVE | LIGHTING AND SIDEWALK IMPROVEMENTS



CITY OF MIAMI BEACH



Turn

Design: FRIS & MOLTKE Design

Turn by Fris & Moltke Design is a new brand in the Focus program.

The luminaires in cast aluminium have silk-edged shades in clear glass. The housing is completed by a long ring in cast aluminium or a short, opal-white acrylic ring.

Turn is available as a spot with reflector or with optics for asymmetrical light.



TURN SPOT

Turn Spot is equipped with a long ring in cast aluminium for cut-off and anti-glare.

Turn Spot Halo is equipped with a short, opal-white acrylic ring, opening the luminaire and offering optical guidance.

Both spots are equipped with reflector and LED with light distribution in three angles: narrow (12°), medium (15°), and wide (38°).

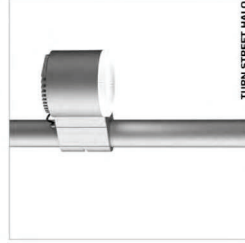
The spots can be adjusted horizontally around the post and vertically in the bracket. When holes have been bored in the post, the spots can be turned 30 degrees to both sides.



TURN SPOT HALO

Turn Street Halo is available in one version only. The luminaire is equipped with optics for asymmetrical light onto cycling lanes and pedestrian areas.

The street luminaire will be equipped with programmed LED and lenses for asymmetrical light.



TURN STREET HALO

Find our sales partner in your country under Contacts at www.focus-lighting.dk

PROPOSED ALTERNATIVES

02MODULE

48

FOCUS-LIGHTING

PUBLIC MEETING
MARCH 2025

OCEAN DRIVE | LIGHTING AND SIDEWALK IMPROVEMENTS



CITY OF MIAMI BEACH



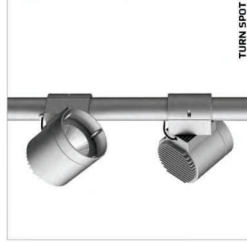
Turn

Design: FRIS & MOLTKE Design

Turn by Fris & Moltke Design is a new brand in the Focus program.

The luminaires in cast aluminium have silk-edged shades in clear glass. The housing is completed by a long ring in cast aluminium or a short, opal-white acrylic ring.

Turn is available as a spot with reflector or with optics for asymmetrical light.



TURN SPOT

Turn Spot is equipped with a long ring in cast aluminium for cut-off and anti-glare.

Turn Spot Halo is equipped with a short, opal-white acrylic ring, opening the luminaire and offering optical guidance.

Both spots are equipped with reflector and LED optics. The reflector has three angles: narrow (12°), medium (19°), and wide (36°).

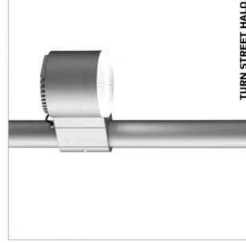
The spots can be adjusted horizontally around the post and vertically in the bracket. When holes have been bored in the post, the spots can be turned 90 degrees to both sides.



TURN SPOT HALO

Turn Street Halo is available in one version only. The casing with the short, opal-white ring opens up for asymmetrical light into cycling lanes and pedestrian areas.

The street luminaire will be equipped with programmed LED and lenses for asymmetrical light.



TURN STREET HALO

Find our sales partner in your country under Contacts at www.focus-lighting.dk

PROPOSED ALTERNATIVES

02MODULE

49

FOCUS-LIGHTING

PUBLIC MEETING
MARCH 2025

OCEAN DRIVE | LIGHTING AND SIDEWALK IMPROVEMENTS



CITY OF MIAMI BEACH



Recommended Fixture



CITY OF MIAMI BEACH

OCEAN DRIVE | LIGHTING AND SIDEWALK IMPROVEMENTS

PUBLIC MEETING

MARCH 2025

50

02MODULE

PROPOSED ALTERNATIVES



CITY OF MIAMI BEACH

OCEAN DRIVE | LIGHTING AND SIDEWALK IMPROVEMENTS

PUBLIC MEETING
MARCH 2025



LIGHT FIXTURES ALLOW FOR THE
INCORPORATION OF TURTLE-FRIENDLY
AMBER LIGHTING AND DIRECTIONAL
SHIELDS



CITY OF MIAMI BEACH

OCEAN DRIVE | LIGHTING AND SIDEWALK IMPROVEMENTS

PUBLIC MEETING
MARCH 2025



CITY OF MIAMI BEACH

OCEAN DRIVE | LIGHTING AND SIDEWALK IMPROVEMENTS

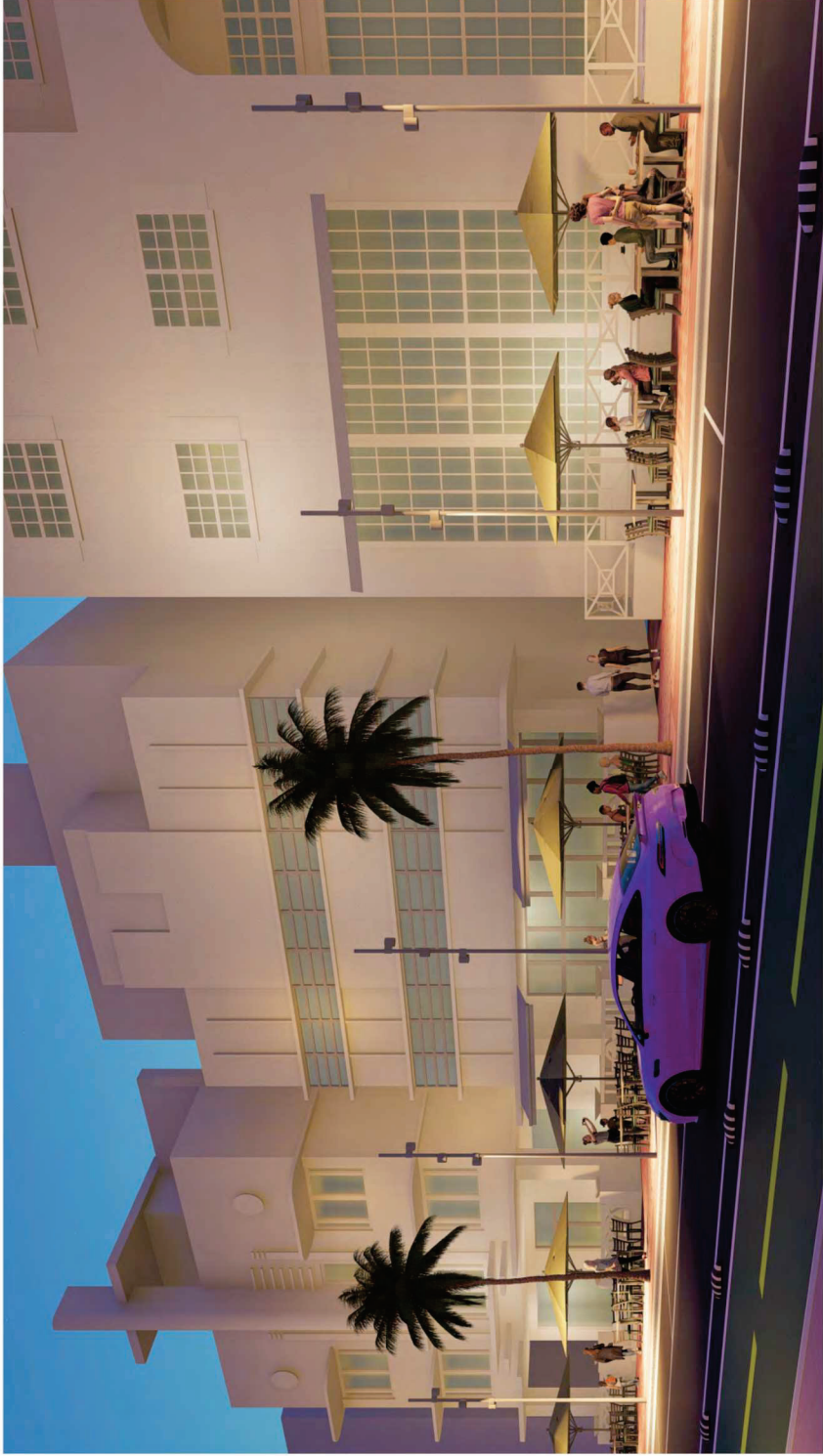
PUBLIC MEETING
MARCH 2025

53

02MODULE

PROPOSED ALTERNATIVES

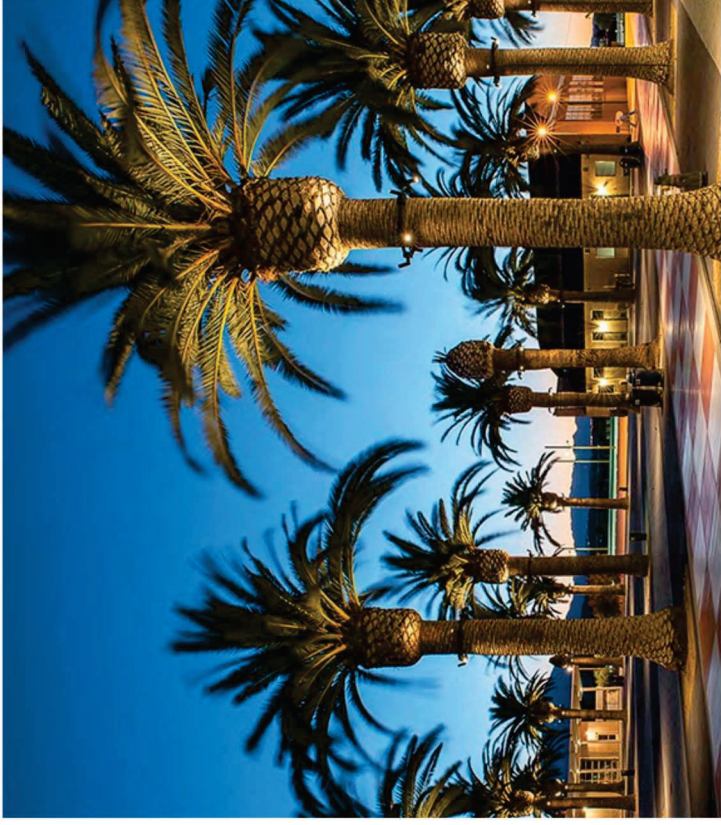




CITY OF MIAMI BEACH

OCEAN DRIVE | LIGHTING AND SIDEWALK IMPROVEMENTS

PUBLIC MEETING
MARCH 2025



Design Recommendation



CITY OF MIAMI BEACH

OCEAN DRIVE | LIGHTING AND SIDEWALK IMPROVEMENTS

PUBLIC MEETING
MARCH 2025

55

02MODULE

PROPOSED ALTERNATIVES

Summary of Recommendations

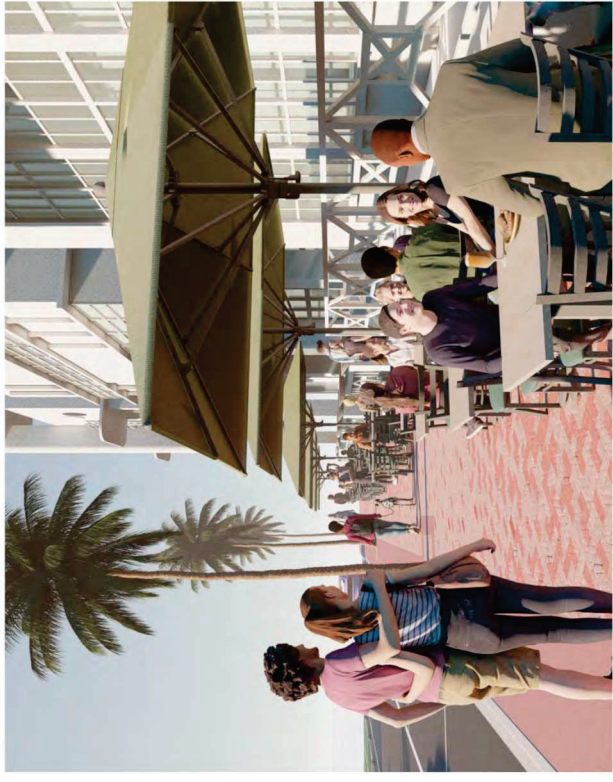
03



CITY OF MIAMI BEACH

OCEAN DRIVE | LIGHTING AND SIDEWALK IMPROVEMENTS

PUBLIC MEETING
MARCH 2025



Design Recommendations



CITY OF MIAMI BEACH

OCEAN DRIVE | LIGHTING AND SIDEWALK IMPROVEMENTS

PUBLIC MEETING
MARCH 2025