

OB 1. DISCUSS BEAUTIFYING WASHINGTON AVENUE BY ENHANCING LIGHTING  
AND STREETSCAPING ON WASHINGTON AVENUE  
Applicable Area:

# MIAMI BEACH

## COMMITTEE MEMORANDUM

TO: Finance and Economic Resiliency Committee Members

FROM: Eric Carpenter, City Manager

DATE: March 26, 2025

TITLE: DISCUSS BEAUTIFYING WASHINGTON AVENUE BY ENHANCING LIGHTING  
AND STREETSCAPING ON WASHINGTON AVENUE

### **RECOMMENDATION**

The Administration recommends replacing the sidewalks and pedestrian light fixtures along Washington Avenue from 5th Street to 17th Street, utilizing General Obligation (G.O.) Bond funding and incorporating input from the Washington Avenue Business Improvement District (BID).

### **BACKGROUND/HISTORY**

On June 26, 2024, at the request of Commissioner Kristen Rosen Gonzalez, co-sponsored by Commissioners Joseph Magazine, David Suarez, Alex Fernandez, and Tanya Bhatt, the Mayor and City Commission (City Commission) approved referral item C4C (Attachment A), to the Finance and Economic Resiliency Committee (FERC) meeting, to discuss beautifying Washington Avenue by enhancing lighting and streetscaping.

There had been similar requests brought up for discussion by City Commission members at the Public Safety and Quality of Life Committee (PSNQLC) and FERC to enhance lighting on South Beach, however, neither request turned into favorable recommendations to the City Commission for approval, due to costs for installation and maintenance exceeding \$1 Million.

On September 20, 2024, FERC members were provided sidewalk and lighting updates along Washington Avenue. Public Works presented two proposals for wrap lights on median trees for the east and west sidewalks, including maintenance costs for a period of one year after installation. The breakdown for these costs were:

- Washington Avenue from 5th Street to 17th Street (median trees): \$272,532
- Washington Avenue from 5th Street to 17th Street (east and west sidewalks): \$1,195,950

Public Works reiterated at Committee that funding for the proposed wrap lights had yet to be identified. There was also a discussion about the \$10 Million G.O. Bond fund as part of the Washington Avenue Corridor Project. Said funding, once allocated, would be used to invest in capital improvements, permanent lighting and landscaping along Washington Avenue. Wrap lights, however, since considered temporary fixtures, would not be eligible for G.O. Bond funding.

Discussions at Committee continued, focusing on how to reenergize Washington Avenue short and long term, using G.O. Bond funds. There were discussions regarding the need to have the Washington Avenue BID be involved in these efforts along with the City (they have since been engaged). FERC members made a favorable recommendation to move the item to the October 30, 2024, City Commission meeting for approval to proceed with the installation of wrap lights on median trees on Washington Avenue, from 5th Street to 17th Street, in the approximate amount of \$273,000. FERC members also requested for the Administration to come back to the November 8, 2024, FERC meeting to provide cost estimates for sidewalk repairs/replacement and cost for the replacement of lighting fixtures along Washington Avenue.

On November 8, 2024, FERC members discussed the total cost for in-kind replacement of grey sidewalk and light fixtures estimated at \$1,537,000, to be funded through the G.O. Bond. Committee members expressed a desire to upgrade the sidewalk materials, since there was enough money funded under the G.O. Bond. Direction was given to have staff return to the January 24, 2025, FERC meeting, with an updated cost and plan including upgrading sidewalk materials. On January 24, 2025 FERC members were presented with an Exposed Shell Specialty concrete option to be considered. The discussion continued and concluded with a motion to return to the March 26, 2025, FERC meeting with an additional 3-4 recommendations for specialty sidewalks.

## **ANALYSIS**

### **Sidewalks**

The Administration has obtained three (3) additional estimates from several contractors for alternative sidewalk improvements along Washington Avenue between 5th and 17th streets to include Americans with Disability Act (ADA) compliance and other factors not previously included.

The following are five (5) options and estimated costs:

(Costs do not include yearly maintenance fees estimated at 5%)

- 1) The Regular red concrete sidewalk (\$1,418,381.68)
- 2) Exposed Shell Specialty concrete sidewalk (\$2,217,430)

- 3) Stamped Specialty sidewalks (\$1,893,612)
- 4) Paver bricks (\$9,418,541)
- 5) Red and grey concrete sidewalk (\$2,506,410)

### **REGULAR RED CONCRETE SIDEWALK**

#### **Pros:**

- Affordable: generally, the most cost-effective option
- Smooth Surface: even and uniform, making it accessible for all users (e.g., wheelchairs, strollers)
- Low Maintenance: easy to clean and does not require much upkeep beyond sealing (if necessary)

#### **Cons:**

- Prone to Cracking: susceptible to cracks over time due to ground movement or weathering
- Appearance: Color may fade over time

### **EXPOSED SHELL CONCRETE SIDEWALK**

#### **Pros:**

- Aesthetic Appeal: features embedded shells for a natural, decorative, and coastal-inspired look
- Durability: the embedded shells can increase surface hardness and resilience
- Slip Resistance: textured surface provides good traction, especially in wet conditions
- Unique Appearance: no two installations are identical due to the variation in shell patterns
- Eco-Friendly: often uses reclaimed or recycled shells, which is environmentally friendly

#### **Cons:**

- Higher Cost: typically, more expensive due to materials and specialized labor
- Rough Texture: less comfortable for bare feet compared to smooth surfaces
- Maintenance: dirt and debris can accumulate in textured areas, requiring regular cleaning
- Repair Challenges: matching the shell pattern during repairs can be difficult, making patches visible
- Prone to Cracking: susceptible to cracks over time due to ground movement or weathering
- Appearance: color may fade over time

## **STAMPED CONCRETE SIDEWALK**

### **Pros:**

- Customizable Designs: can mimic the appearance of stone, brick, tile, or wood, offering a high-end look
- Wide Range of Colors: can be stained or dyed to achieve nearly any color scheme
- Durability: seamless construction provides greater resistance to shifting and settling than loose pavers
- Increased Property Value: enhances curb appeal and can make the property more attractive

### **Cons:**

- Cost: more expensive than regular concrete, though usually less than exposed shell concrete
- Maintenance: requires regular resealing to maintain its appearance and prevent damage
- Risk of Cracking: like regular concrete, stamped concrete is prone to cracking; cracks are harder to repair without visible seams
- Skilled Labor Needed: installation requires experienced contractors to achieve the desired pattern and finish
- Appearance: color may fade over time

## **PAVER BRICKS**

### **Pros:**

- Durability: made from high-quality materials like concrete, which are designed to withstand harsh weather conditions
- Slip Resistance: many of their pavers have a textured surface, providing better traction and reducing the risk of slipping, especially in wet conditions
- Eco-Friendly: some paver bricks feature permeable designs, which allow water to pass through, reducing stormwater runoff and helping with drainage

### **Cons:**

- Higher Cost: can be more expensive compared to other paver styles
- Installation Complexity: paver bricks are relatively heavy which can make installation more labor-intensive and require additional tools or help
- Risk of Cracking: although durable, concrete pavers can crack under extreme pressure or impact, especially if they are not maintained properly
- High Maintenance: proper installation is critical to ensure longevity. Poor installation can lead to shifting or settling over time, which will require repairs
- Appearance: difficult to find similar replacement pavers for repairs after a few years

## **RED & GREY CONCRETE SIDEWALK**

### **Pros:**

- Visual Appeal: a red and grey patterned sidewalk adds a bold, stylish touch to outdoor spaces. it can enhance the curb appeal and make the sidewalk a focal point.
- Increased Aesthetic Value: the contrast between the red and grey can create depth and texture, giving the sidewalk an upscale, professional appearance that can elevate the overall design of the area.
- Durability: both red and grey concrete are durable and provide long-lasting solutions, ensuring that the patterned sidewalk will withstand heavy foot traffic and the elements.

### **Cons:**

- Cost and Labor: patterned concrete often requires more complex work, which can increase both material and labor costs. More detailed patterns might also take longer to install
- Complex Maintenance: if the concrete start to stain, crack, or fade, the difficult pattern could make repairs more challenging and expensive
- Cleaning Difficulties: depending on the pattern's complexity, cleaning between the different sections or grooves in the design could be more time-consuming and challenging compared to a simple uniform sidewalk
- Prone to Cracking: susceptible to cracks over time due to ground movement or weathering

COMPARISON SUMMARY

| Feature           | Regular Red Concrete | Exposed Shell Concrete | Stamped Concrete    | Paver Bricks    | Red & Grey Concrete |
|-------------------|----------------------|------------------------|---------------------|-----------------|---------------------|
| Cost              | Low                  | Medium-High            | Medium              | Very High       | Medium-High         |
| Aesthetic Appeal  | Basic                | Unique, Coastal Look   | Highly Customizable | Unique          | Moderate/ Stylish   |
| Durability        | High                 | High                   | High                | Moderate        | Moderate            |
| Slip Resistance   | High                 | High                   | Moderate-High       | Moderate - High | High                |
| Maintenance       | Low                  | Moderate               | Moderate            | Very High       | Low-Medium          |
| Repair Difficulty | Easy                 | Difficult              | Moderate            | Difficult       | Moderate            |

REGULAR RED CONCRETE SIDEWALK



EXPOSED SHELL CONCRETE SIDEWALK



STAMPED CONCRETE SIDEWALK



### **PAVER BRICKS**



### **MIX RED & GREY**



Additionally, a study was conducted by Calvin, Giordano and Associates, showing the different sidewalk options for Ocean Drive for design consideration (Attachment B).

### **Lighting**

The cost to replace the Pedestrian Light Fixtures remains at an estimated: \$650,000 (LED, 4K Acorn light fixtures).

### **FISCAL IMPACT STATEMENT**

The total fiscal impact will be determined once a decision has been made for the sidewalk material and application type.

### **CONCLUSION**

The Administration recommends replacing the sidewalks and pedestrian light fixtures along Washington Avenue from 5th Street to 17th Street, utilizing G.O. Bond funding and incorporating input from the Washington Avenue BID.

### **Applicable Area**

South Beach

**Is this a "Residents Right to Know" item, pursuant to City Code Section 2-17?**

Yes

**Is this item related to a G.O. Bond Project?**

Yes

**Was this Agenda Item initially requested by a lobbyist which, as defined in Code Sec. 2-481, includes a principal engaged in lobbying?** No

If so, specify the name of lobbyist(s) and principal(s):

**Department**

Public Works

**Sponsor(s)**

Commissioner Kristen Rosen Gonzalez

**Co-sponsor(s)**

Commissioner Joseph Magazine

Commissioner David Suarez

Commissioner Alex Fernandez

Commissioner Tanya Bhatt,

**Condensed Title**

DISCUSS BEAUTIFYING WASHINGTON AVENUE BY ENHANCING LIGHTING AND STREETSCAPING ON WASHINGTON AVENUE



**COMMISSION MEMORANDUM**

TO: Honorable Mayor and Members of the City Commission

FROM: Commissioner Kristen Rosen Gonzalez

DATE: June 26, 2024

TITLE: REFERRAL TO THE FINANCE AND ECONOMIC RESILIENCY COMMITTEE TO DISCUSS BEAUTIFYING WASHINGTON AVENUE BY ENHANCING LIGHTING AND STREET-SCAPING ON WASHINGTON AVENUE.

**RECOMMENDATION**

**BACKGROUND/HISTORY**

**ANALYSIS**

**FISCAL IMPACT STATEMENT**

N/A

**Does this Ordinance require a Business Impact Estimate?**  
(FOR ORDINANCES ONLY)

The Business Impact Estimate (BIE) was published on . See BIE at:  
<https://www.miamibeachfl.gov/city-hall/city-clerk/meeting-notices/>

**FINANCIAL INFORMATION**

**CONCLUSION**

**Applicable Area**

South Beach

**Is this a "Residents Right to Know" item,  
pursuant to City Code Section 2-17?**

**Is this item related to a G.O. Bond  
Project?**

Yes

No

**Was this Agenda Item initially requested by a lobbyist which, as defined in Code Sec. 2-481, includes a principal engaged in lobbying?** No

If so, specify the name of lobbyist(s) and principal(s):

**Department**

Office of Commissioner Kristen Rosen Gonzalez

**Sponsor(s)**

Commissioner Kristen Rosen Gonzalez

**Co-sponsor(s)**

Commissioner Joseph Magazine  
Commissioner David Suarez

# LIGHTING AND SIDEWALK IMPROVEMENTS

**CITY OF MIAMI BEACH**

OCEAN DRIVE

Calvin, Giordano & Associates, Inc.



CITY OF MIAMI BEACH

OCEAN DRIVE | LIGHTING AND SIDEWALK IMPROVEMENTS

PUBLIC MEETING  
MARCH 2025

## 2 Concurrent projects:

### IMPLEMENTING THE ADCD VISION PLAN (OCEAN DR. CORRIDOR AND LUMMUS PARK ENHANCEMENT PROJECT):

- sometimes referred to as the 'long-term' project
- "a complex, multi-year endeavor that involves comprehensive design, permitting and construction"
- the 'long-term' project requires evaluations of all 3 ADCD options for Ocean Drive to FIRST obtain approval from BOTH Miami-Dade County and the Florida Dept of Transportation on the selected traffic configuration
- once the traffic studies are completed and agency approvals are obtained, site design and site engineering can begin

### LIGHTING AND SIDEWALK IMPROVEMENTS:

- sometimes referred to as the 'short-term' project
- replacement of existing sidewalks and lighting improvements
- focuses on the importance of lighting and sidewalk improvements to enhance safety, accessibility, and aesthetics, and seeks to advance these enhancements



CITY OF MIAMI BEACH

OCEAN DRIVE | LIGHTING AND SIDEWALK IMPROVEMENTS

PUBLIC MEETING  
MARCH 2025

# Objectives - 'Short Term' project

1. **Replace existing sidewalks**  
no impacts to traffic geometries, drainage patterns, or underground infrastructure
2. **Propose options for lighting along the west side of Ocean Drive**



CITY OF MIAMI BEACH

OCEAN DRIVE | LIGHTING AND SIDEWALK IMPROVEMENTS

PUBLIC MEETING  
MARCH 2025

# Design Considerations

1. Enhance Safety and Accessibility
2. Cost of Implementation
3. Cost of Maintenance
4. Ease of Repair and Longevity
5. Sensitivity to Local Businesses



CITY OF MIAMI BEACH

OCEAN DRIVE | LIGHTING AND SIDEWALK IMPROVEMENTS

PUBLIC MEETING  
MARCH 2025

# Agenda

1. Discuss Paving Strategies and Approaches
2. Discuss the 'pros' and 'cons' of the various hardscape alternatives
3. Showcase proposed design options
4. Discuss lighting strategy for Ocean Drive



CITY OF MIAMI BEACH

OCEAN DRIVE | LIGHTING AND SIDEWALK IMPROVEMENTS

PUBLIC MEETING  
MARCH 2025

# Basis of Design

# 01



CITY OF MIAMI BEACH

OCEAN DRIVE | LIGHTING AND SIDEWALK IMPROVEMENTS

PUBLIC MEETING  
MARCH 2025

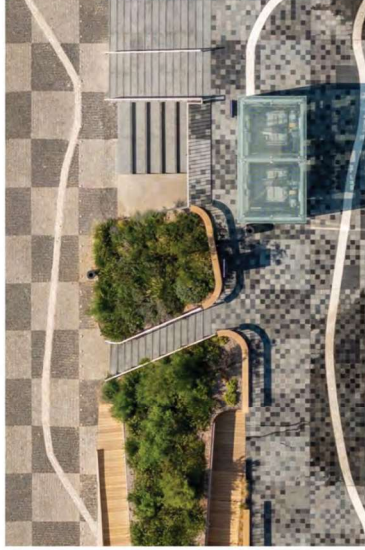
# Paving Strategies and Approaches



CITY OF MIAMI BEACH

OCEAN DRIVE | LIGHTING AND SIDEWALK IMPROVEMENTS

PUBLIC MEETING  
MARCH 2025



# The Value of Paving Design



CITY OF MIAMI BEACH

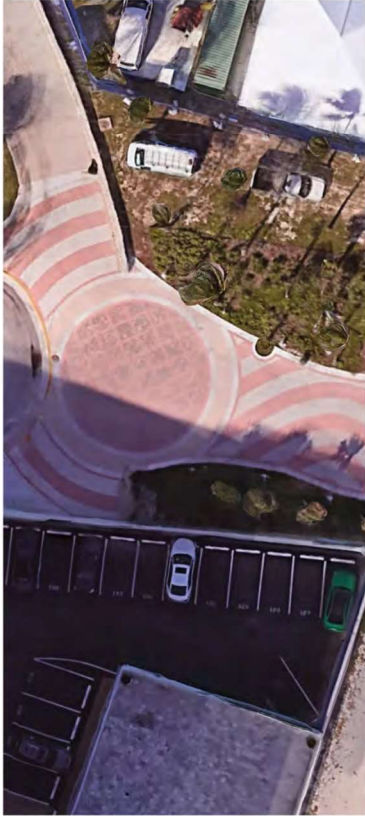
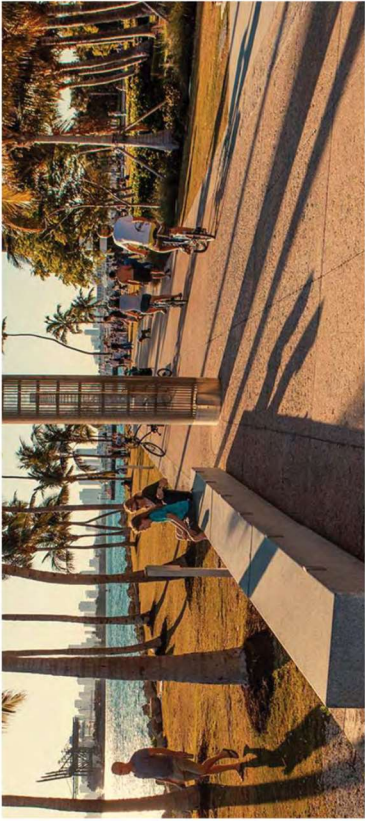
OCEAN DRIVE | LIGHTING AND SIDEWALK IMPROVEMENTS

PUBLIC MEETING  
MARCH 2025

8

01 MODULE

BASIS OF DESIGN



# Paving Precedents - Local



CITY OF MIAMI BEACH

OCEAN DRIVE | LIGHTING AND SIDEWALK IMPROVEMENTS  
PUBLIC MEETING  
MARCH 2025



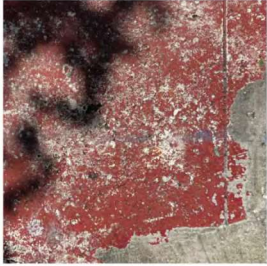
INTEGRAL COLOR  
RED CONCRETE



INTEGRAL COLOR  
RED CONCRETE



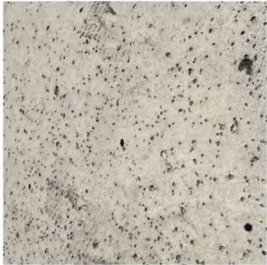
INTEGRAL COLOR RED  
CONCRETE WITH EXPOSED  
SHELL AGGREGATE



NATURAL COLOR CONCRETE  
WITH SURFACE PAINT



NATURAL COLOR CONCRETE  
WITH SURFACE STAIN



NATURAL COLOR CONCRETE  
SALT FINISH



COBBLESTONE PAVER



INTEGRAL COLORED  
CONCRETE PAVER



INTEGRAL COLORED  
CONCRETE PAVER



INTEGRAL COLORED  
CONCRETE PAVER



SQUARE GRANITE PAVER



PIEDRA PORTUGUESA

# Paving Precedents - Local



# 'Pros' and 'Cons' of the various alternatives



CITY OF MIAMI BEACH

OCEAN DRIVE | LIGHTING AND SIDEWALK IMPROVEMENTS

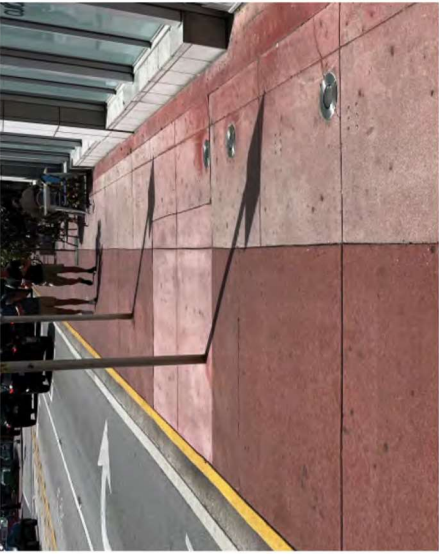
PUBLIC MEETING  
MARCH 2025

11

01 MODULE

BASIS OF DESIGN

INTEGRAL COLORED CONCRETE



- Most widely used material
- Can be colored (Integral color preferred)
- Easy to repair and replace
- Easy to maintain via pressure washing
- Most inexpensive of all options
- Relatively fast to install
- Color will always fade, resulting in a patchwork when replaced
- Designs are subject to limitations of formwork

EXPOSED SHELL CONCRETE



- Refined application and appearance
- Can be colored (Integral color preferred)
- Relatively easy to maintain via pressure washing
- Requires skilled installers
- More difficult to repair and replace while keeping a seamless quality
- Color will always fade, resulting in a patchwork when replaced
- More prone to dirt accumulation
- Increased costs of installation

## Paving Alternatives



CITY OF MIAMI BEACH

OCEAN DRIVE | LIGHTING AND SIDEWALK IMPROVEMENTS

PUBLIC MEETING  
MARCH 2025

12

01 MODULE

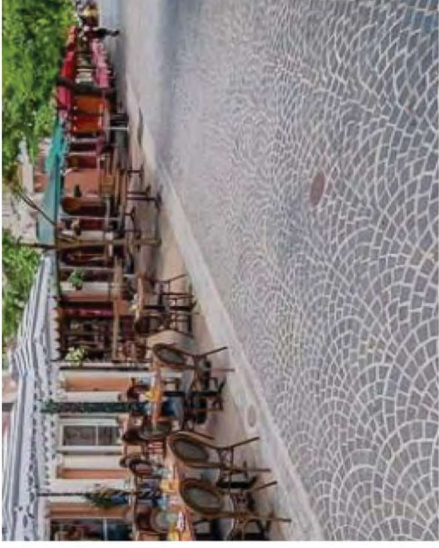
BASIS OF DESIGN

## CONCRETE PAVERS



- Widely used and proven material throughout the City
- Available with exposed shell finish and in a variety of colors
- Relatively easy to maintain via pressure washing
- Generally repairs aren't needed for the first 5 years
- Can accommodate intricate designs
- Can be easily repaired by City Staff
- Color will fade, resulting in a patchwork when replaced
- Excessively intricate designs can result in many 'cut' pieces
- Intricate designs need more maintenance

## COBBLESTONE



- Relatively easy to maintain via pressure washing
- Unique character that is more traditional & historic-leaning
- Design options are more restrictive
- Material requires a lot of maintenance
- Staff has noted that it is very difficult to get repairs to be seamless
- Requires greater skill for repair

## PEDRA PORTUGUESA



- Intricate patterns can be achieved by varying the sizes of the stones
- Colors are limited to what can be supplied
- Very difficult to repair and replace
- Requires highly-skilled installers to achieve seamless look
- Concerns about slip-and-fall due to the polished finish on the stone
- Large grout joints show patchwork where repairs are done
- Difficulty to achieve a smooth, flat surface for tables and chairs
- Very expensive



CITY OF MIAMI BEACH

OCEAN DRIVE | LIGHTING AND SIDEWALK IMPROVEMENTS

PUBLIC MEETING

MARCH 2025

13

## CONCRETE PAVERS



- Widely used and proven material throughout the City
- Available with exposed shell finish and in a variety of colors
- Relatively easy to maintain via pressure washing
- Generally repairs aren't needed for the first 5 years
- Can accommodate intricate designs
- Can be easily repaired by City Staff
- *Color will fade, resulting in a patchwork when replaced*
- *Excessively intricate designs can result in many 'cut' pieces*
- *Intricate designs need more maintenance*



## Material Recommendation



CITY OF MIAMI BEACH

OCEAN DRIVE | LIGHTING AND SIDEWALK IMPROVEMENTS

PUBLIC MEETING  
MARCH 2025

14

01 MODULE

BASIS OF DESIGN

# Proposed Alternatives

# 02



CITY OF MIAMI BEACH

OCEAN DRIVE | LIGHTING AND SIDEWALK IMPROVEMENTS

PUBLIC MEETING  
MARCH 2025



# Existing sidewalks

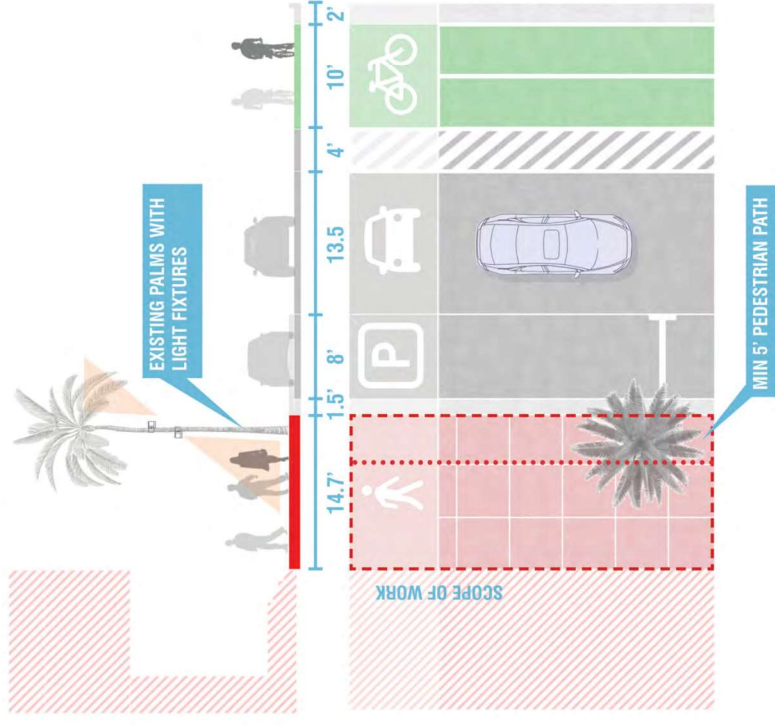


CITY OF MIAMI BEACH

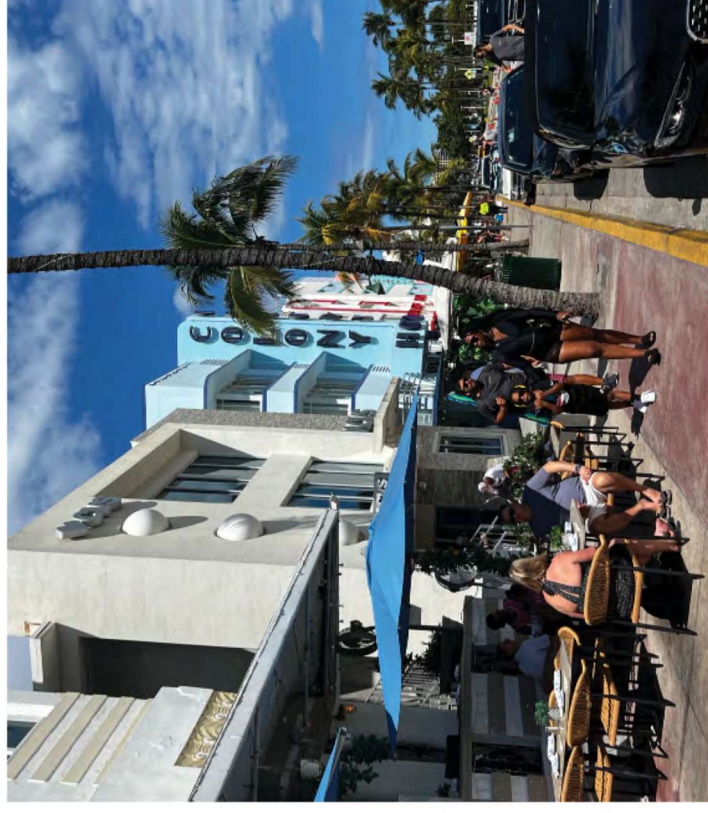
OCEAN DRIVE | LIGHTING AND SIDEWALK IMPROVEMENTS

PUBLIC MEETING  
MARCH 2025

EXISTING SECTION



EXISTING CONDITION



## Existing sidewalks



CITY OF MIAMI BEACH

OCEAN DRIVE | LIGHTING AND SIDEWALK IMPROVEMENTS

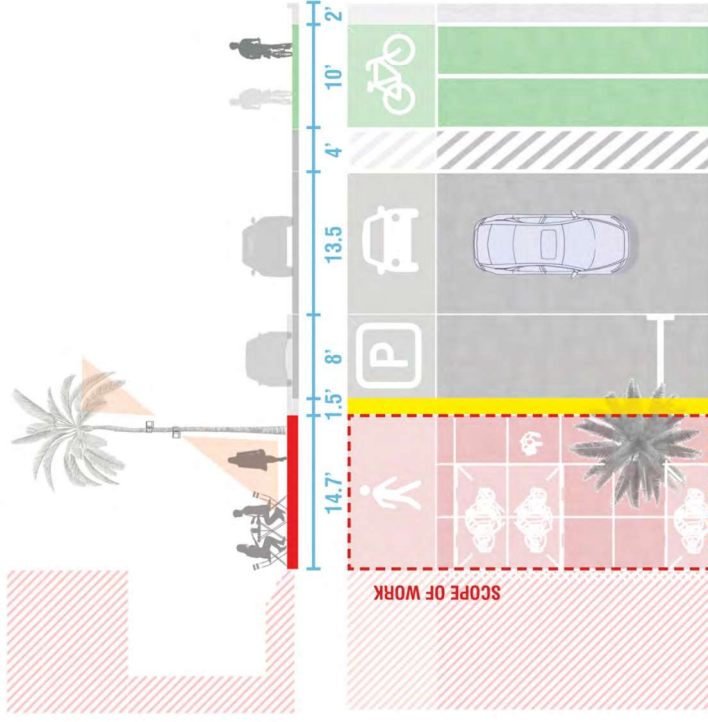
PUBLIC MEETING  
MARCH 2025

17

02MODULE

PROPOSED ALTERNATIVES

EXISTING SECTION



EXISTING CONDITION



## Existing sidewalks

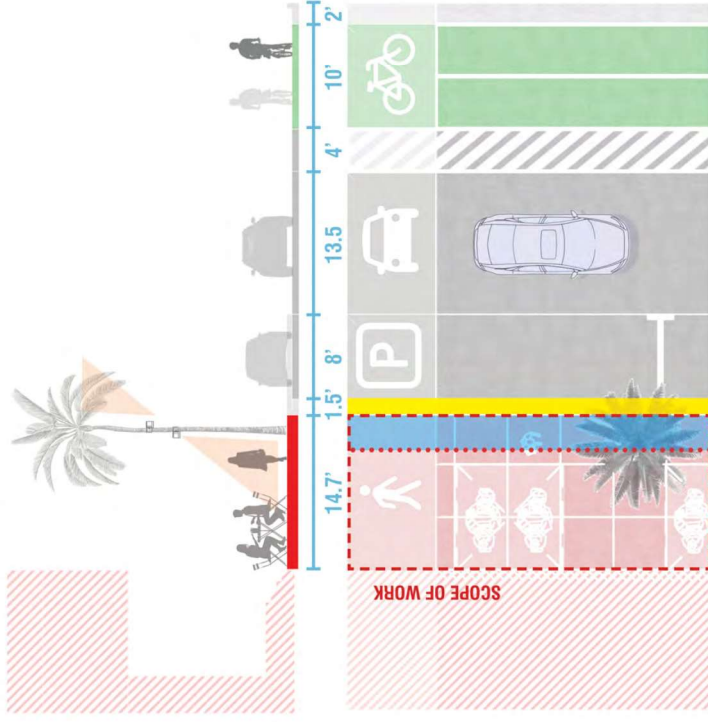


CITY OF MIAMI BEACH

OCEAN DRIVE | LIGHTING AND SIDEWALK IMPROVEMENTS

PUBLIC MEETING  
MARCH 2025

EXISTING SECTION



EXISTING CONDITION



## Existing sidewalks

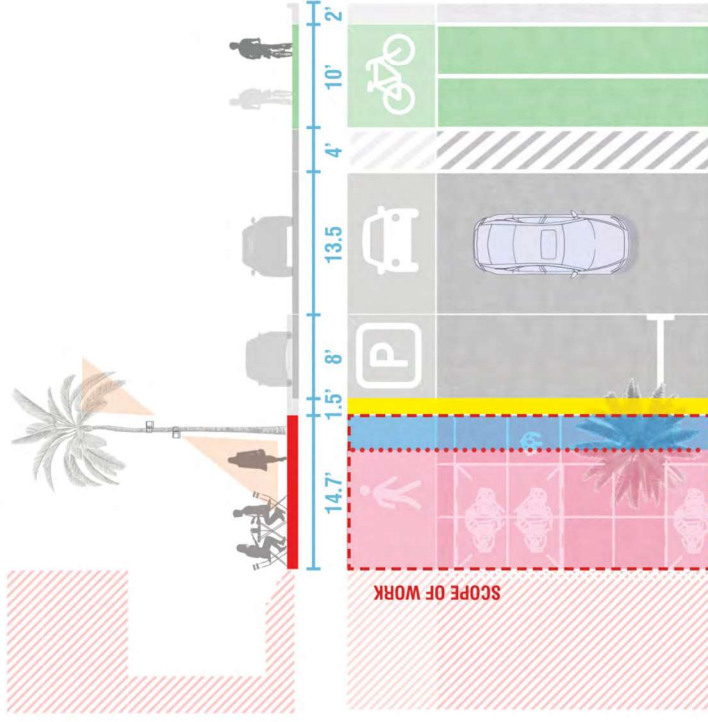


CITY OF MIAMI BEACH

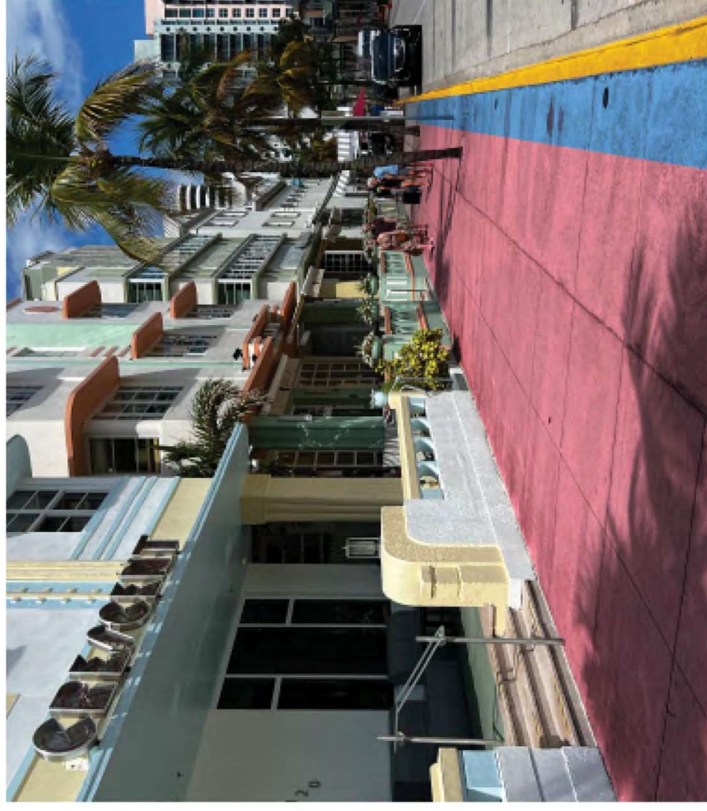
OCEAN DRIVE | LIGHTING AND SIDEWALK IMPROVEMENTS

PUBLIC MEETING  
MARCH 2025

EXISTING SECTION



EXISTING CONDITION



## Existing sidewalks



CITY OF MIAMI BEACH

OCEAN DRIVE | LIGHTING AND SIDEWALK IMPROVEMENTS

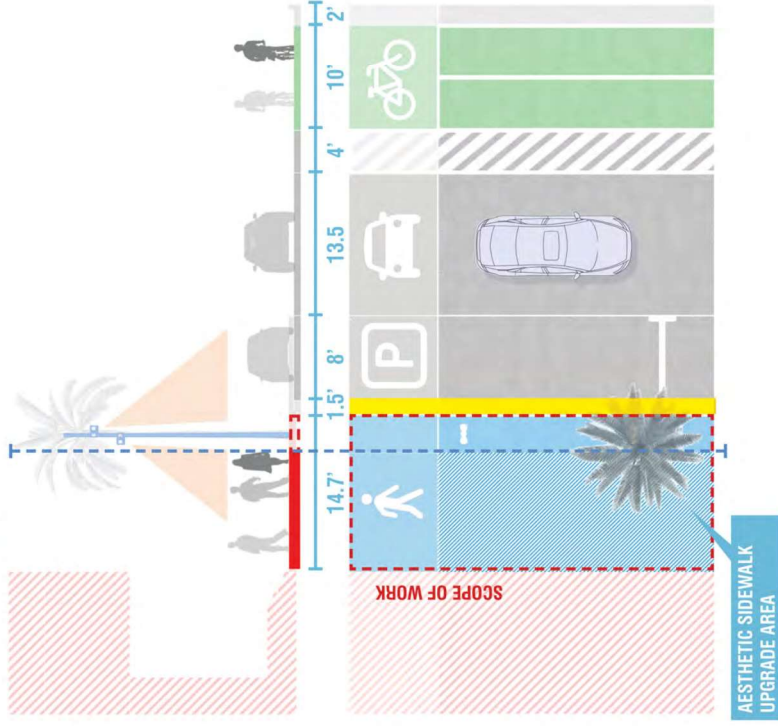
PUBLIC MEETING  
MARCH 2025

20

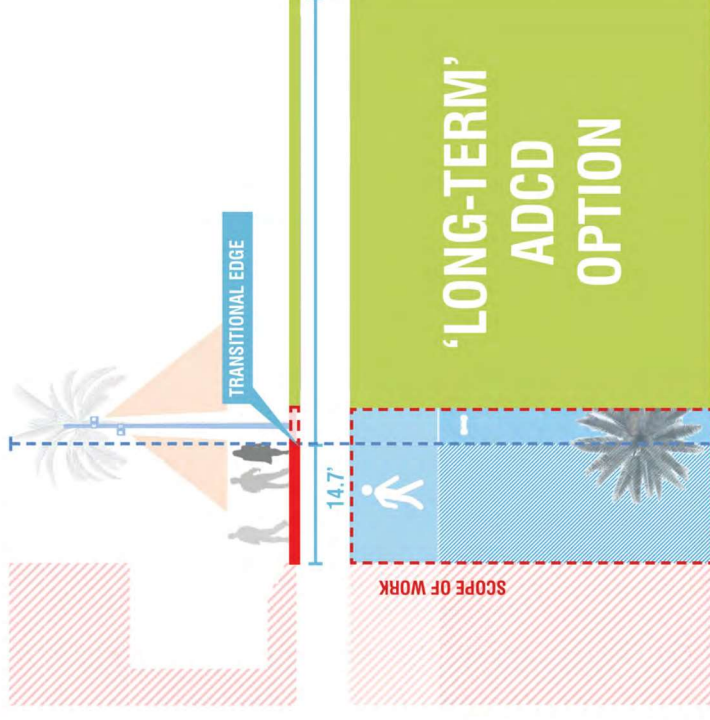
02MODULE

PROPOSED ALTERNATIVES

PROPOSED SECTION



PROPOSED SECTION



'LONG-TERM'  
ADCDC  
OPTION

## Proposed sidewalks

# SINGLE BLOCK DIAGRAM



## PROPOSED ALTERNATIVES

## 02MODULE

22

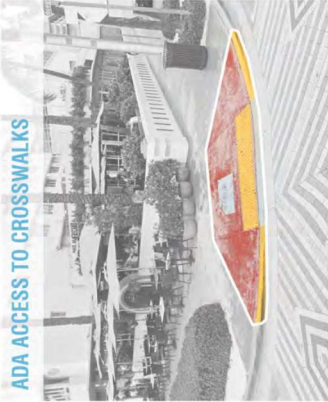
PUBLIC MEETING  
MARCH 2025

OCEAN DRIVE | LIGHTING AND SIDEWALK IMPROVEMENTS



CITY OF MIAMI BEACH

ADA ACCESS TO CROSSWALKS



UTILITY POLES



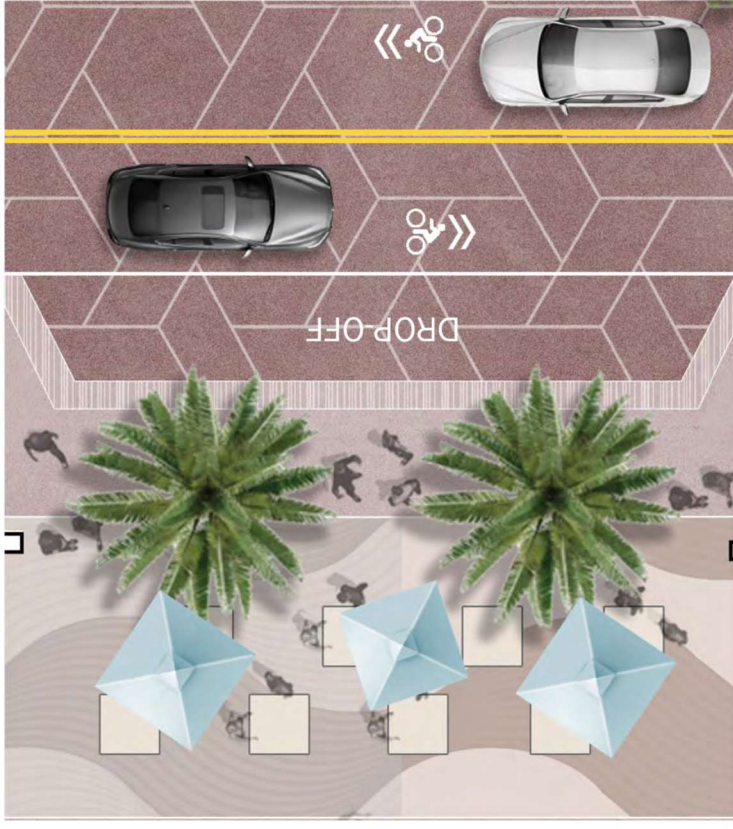
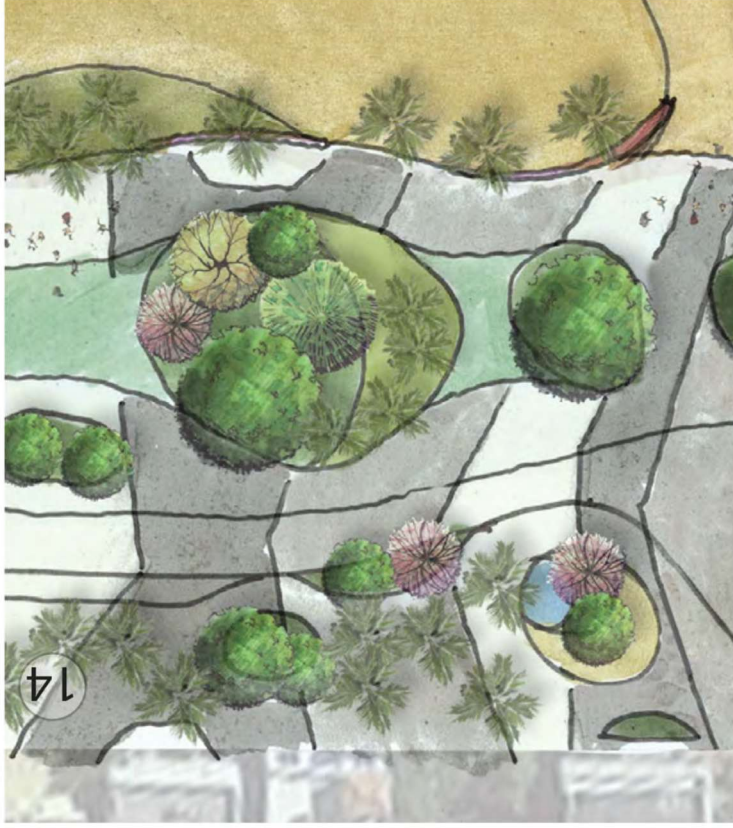
VEHICULAR TRAFFIC SIGNALIZATION



LANDSCAPING BULB-OUTS



## Typical corner condition



## ADCD Vision Plan - Paving



CITY OF MIAMI BEACH

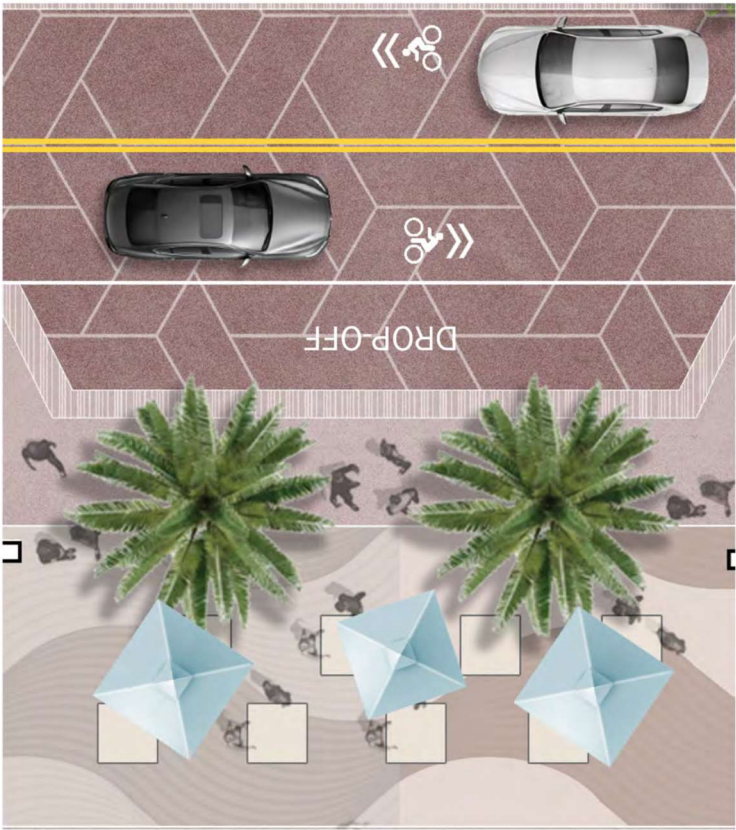
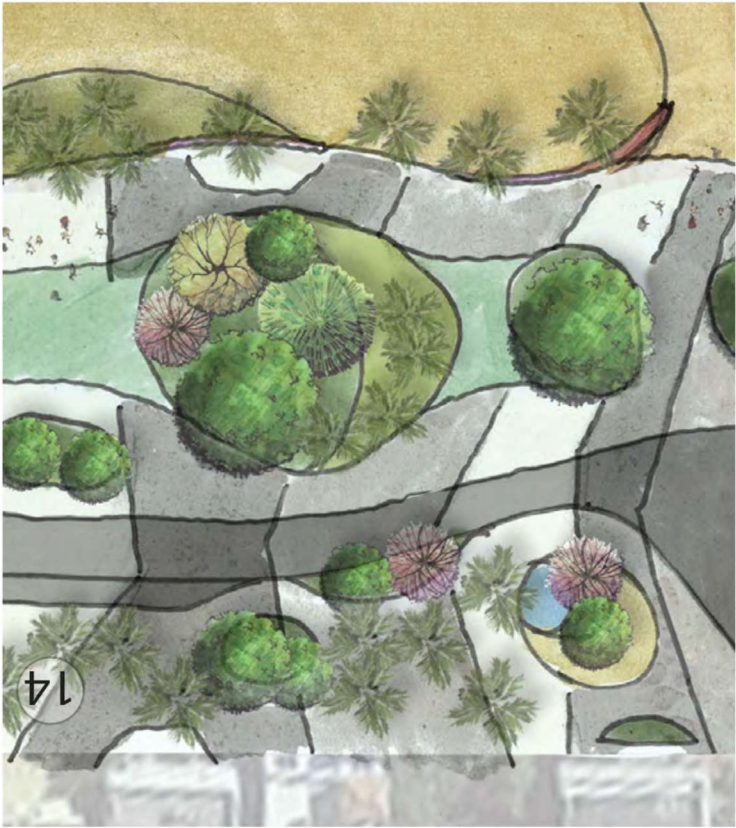
OCEAN DRIVE | LIGHTING AND SIDEWALK IMPROVEMENTS

PUBLIC MEETING  
MARCH 2025

23

02MODULE

PROPOSED ALTERNATIVES



# ADCD Vision Plan - Paving

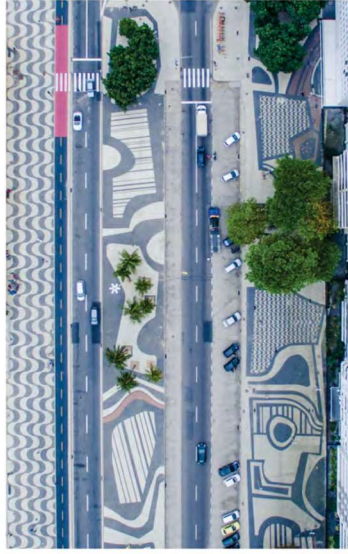


CITY OF MIAMI BEACH

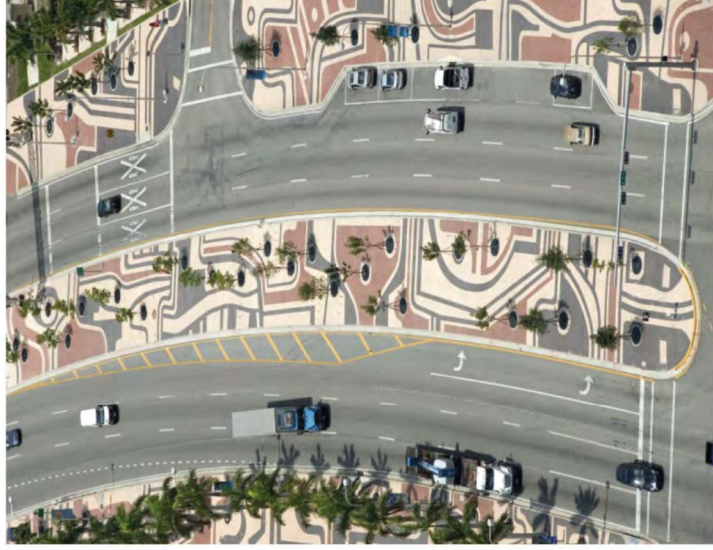
OCEAN DRIVE | LIGHTING AND SIDEWALK IMPROVEMENTS

PUBLIC MEETING  
MARCH 2025

COPACABANA



BISCAYNE BOULEVARD



LINCOLN ROAD (1100 BLOCK)



ADCD MASTERPLAN



## Paving Precedents - Local



CITY OF MIAMI BEACH

OCEAN DRIVE | LIGHTING AND SIDEWALK IMPROVEMENTS

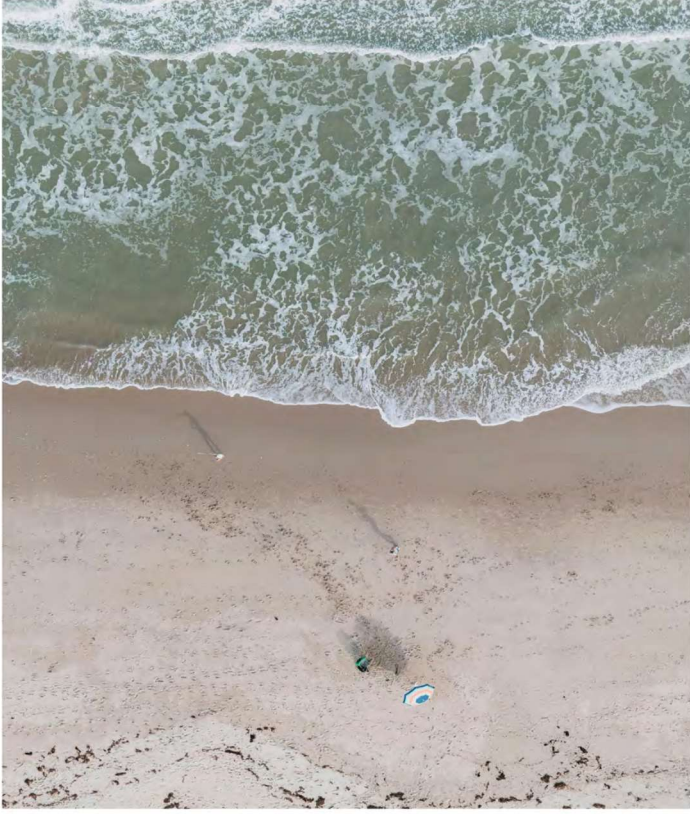
PUBLIC MEETING  
MARCH 2025

25

01 MODULE

BASIS OF DESIGN

ATLANTIC OCEAN



MIAMI BEACH ART DECO



PROPOSED ALTERNATIVES

02MODULE

## Design inspiration

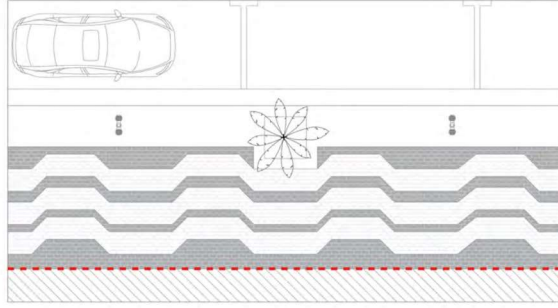


CITY OF MIAMI BEACH

OCEAN DRIVE | LIGHTING AND SIDEWALK IMPROVEMENTS

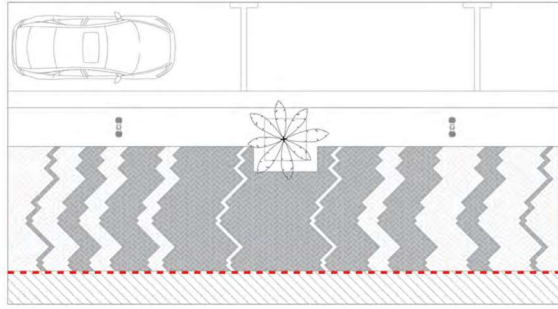
PUBLIC MEETING  
MARCH 2025

OPTION 01



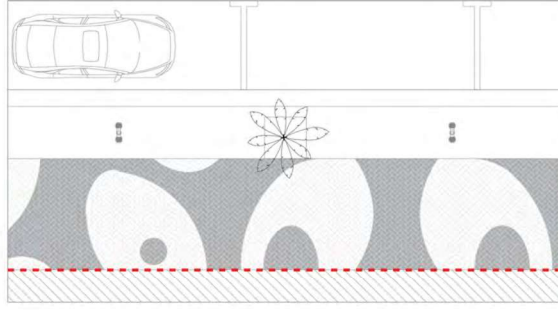
SOLDIER COURSE PATTERN

OPTION 02



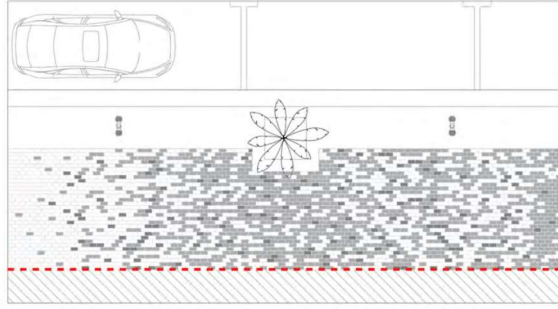
HERRINGBONE PATTERN

OPTION 03



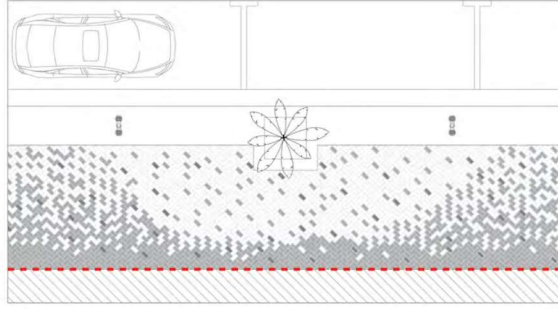
HERRINGBONE PATTERN

OPTION 04



SOLDIER COURSE RANDOMIZED

OPTION 05



HERRINGBONE PATTERN RANDOMIZED

PROPOSED ALTERNATIVES

## Paving patterns modules



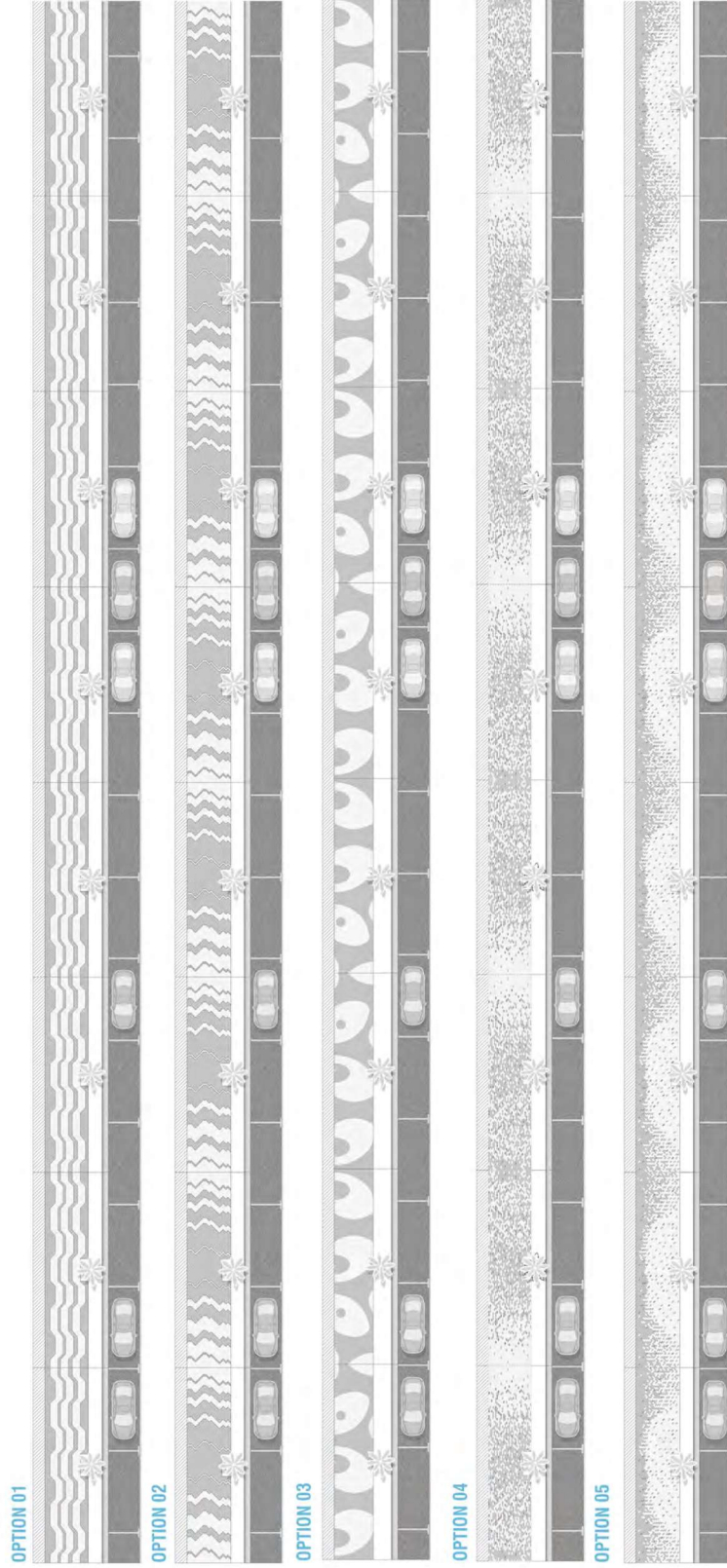
CITY OF MIAMI BEACH

OCEAN DRIVE | LIGHTING AND SIDEWALK IMPROVEMENTS

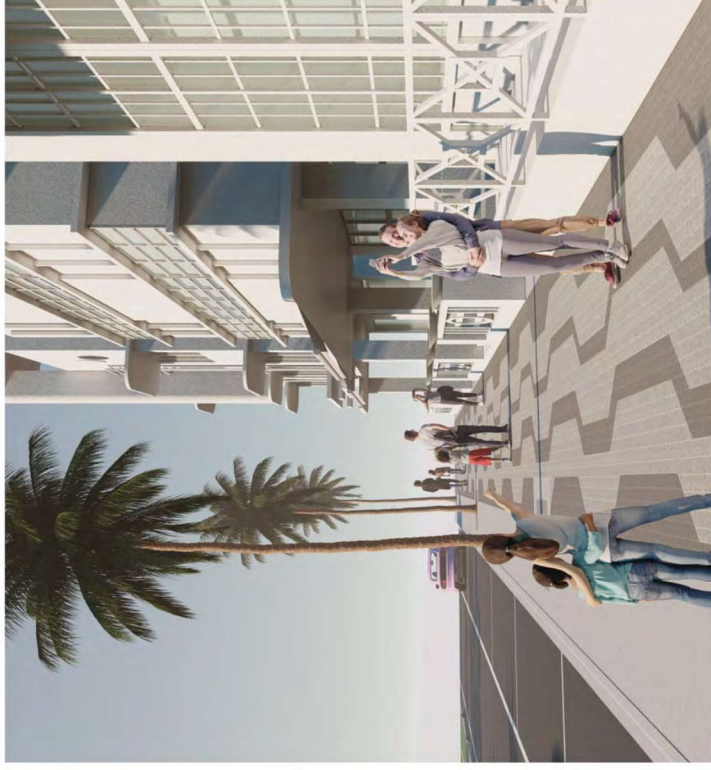
PUBLIC MEETING  
MARCH 2025



## Paving patterns modules



**OPTION 01 A**  
SOLDIER COURSE/ PAVERS 4"X8"

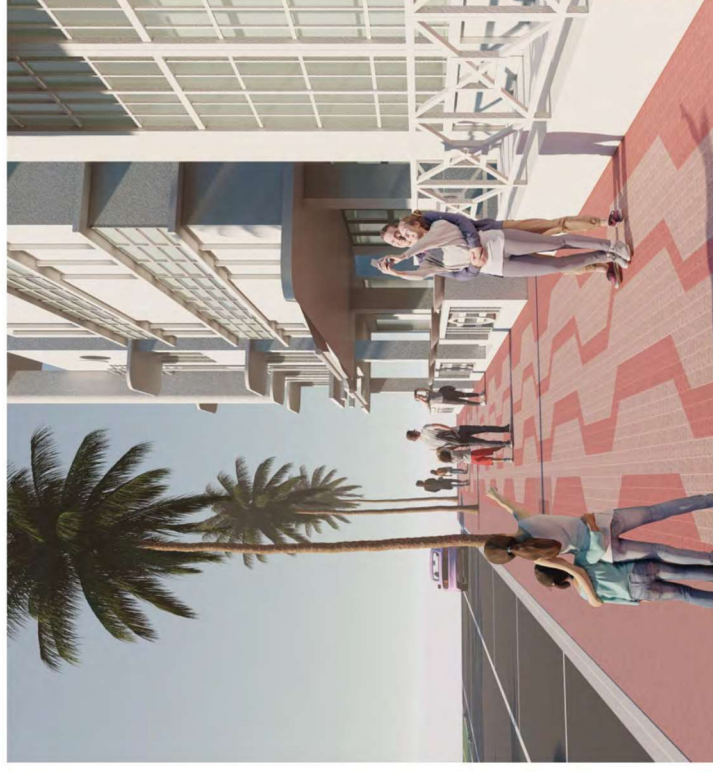
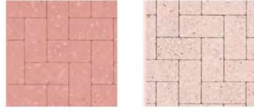


CITY OF MIAMI BEACH

OCEAN DRIVE | LIGHTING AND SIDEWALK IMPROVEMENTS

PUBLIC MEETING  
MARCH 2025

**OPTION 01 B**  
SOLDIER COURSE/ PAVERS 4"X8"



CITY OF MIAMI BEACH

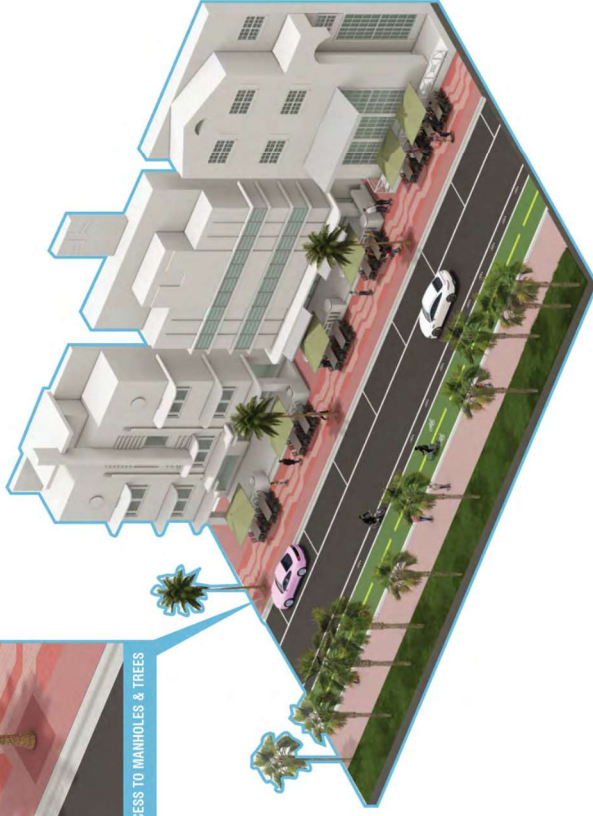
OCEAN DRIVE | LIGHTING AND SIDEWALK IMPROVEMENTS

PUBLIC MEETING  
MARCH 2025

**OPTION 01 SEATING**  
SOLDIER COURSE/ PAVERS 4"X8"



ACCESS TO MANHOLES & TREES



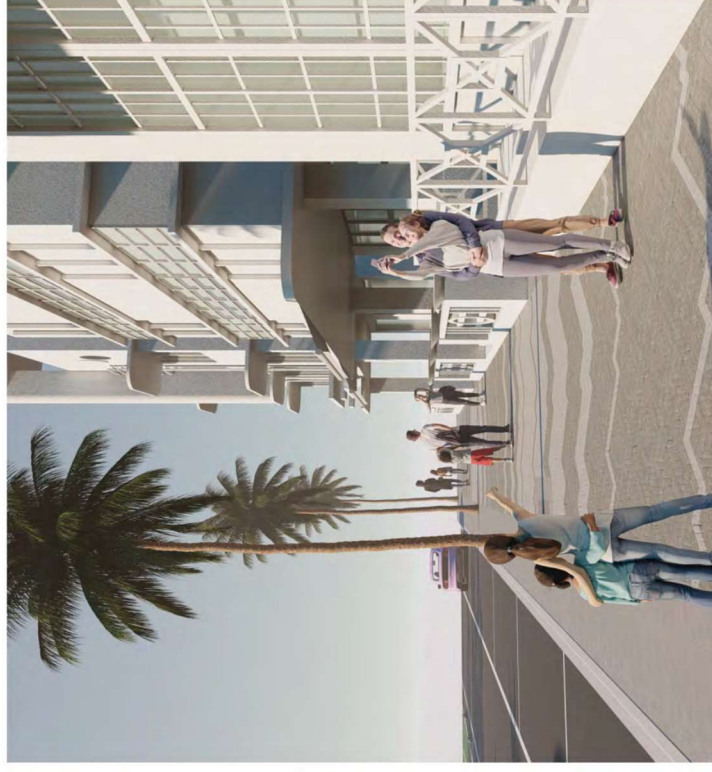
CITY OF MIAMI BEACH

OCEAN DRIVE | LIGHTING AND SIDEWALK IMPROVEMENTS

PUBLIC MEETING  
MARCH 2025

## OPTION 02 A

HERRINGBONE PATTERN / PAVERS 4"X8"



CITY OF MIAMI BEACH

OCEAN DRIVE | LIGHTING AND SIDEWALK IMPROVEMENTS

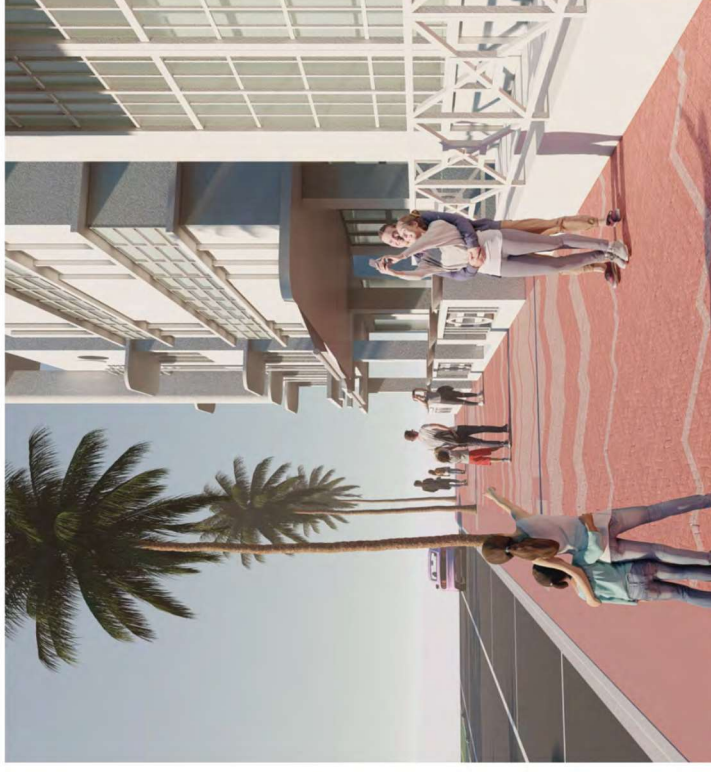
PUBLIC MEETING  
MARCH 2025

32

02MODULE

PROPOSED ALTERNATIVES

**OPTION 02 B**  
HERRINGBONE PATTERN / PAVERS 4"X8"



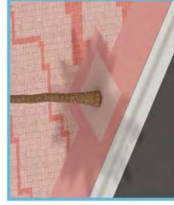
CITY OF MIAMI BEACH

OCEAN DRIVE | LIGHTING AND SIDEWALK IMPROVEMENTS

PUBLIC MEETING  
MARCH 2025

## OPTION 02 SEATING

HERRINGBONE PATTERN/ PAVERS 4"X8"



ACCESS TO MANHOLES & TREES



CITY OF MIAMI BEACH

OCEAN DRIVE | LIGHTING AND SIDEWALK IMPROVEMENTS

PUBLIC MEETING  
MARCH 2025

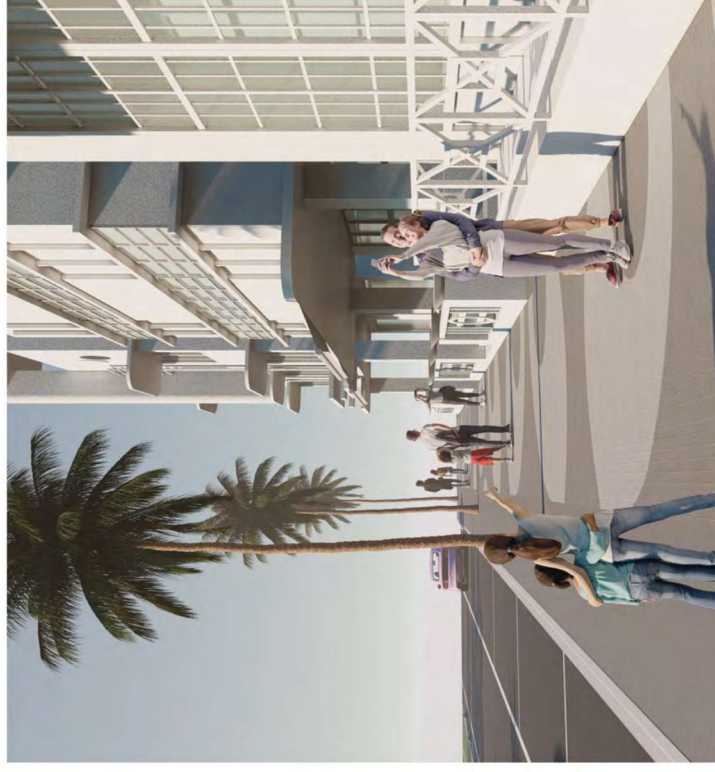
34

02MODULE

PROPOSED ALTERNATIVES

# OPTION 03 A

HERRINGBONE PATTERN / PAVERS 4"X8"

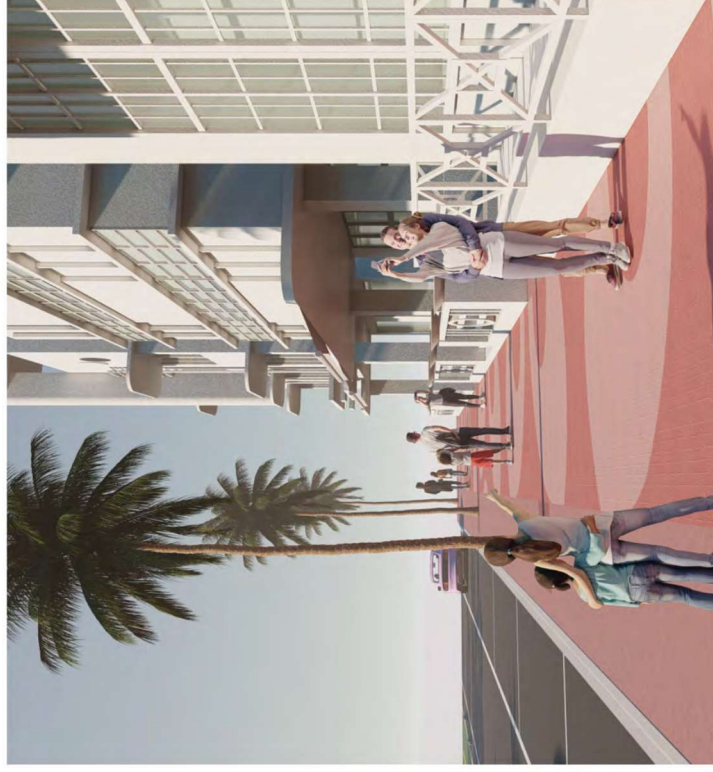
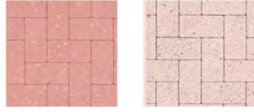


CITY OF MIAMI BEACH

OCEAN DRIVE | LIGHTING AND SIDEWALK IMPROVEMENTS

PUBLIC MEETING  
MARCH 2025

**OPTION 03 B**  
HERRINGBONE PATTERN / PAVERS 4"X8"



CITY OF MIAMI BEACH

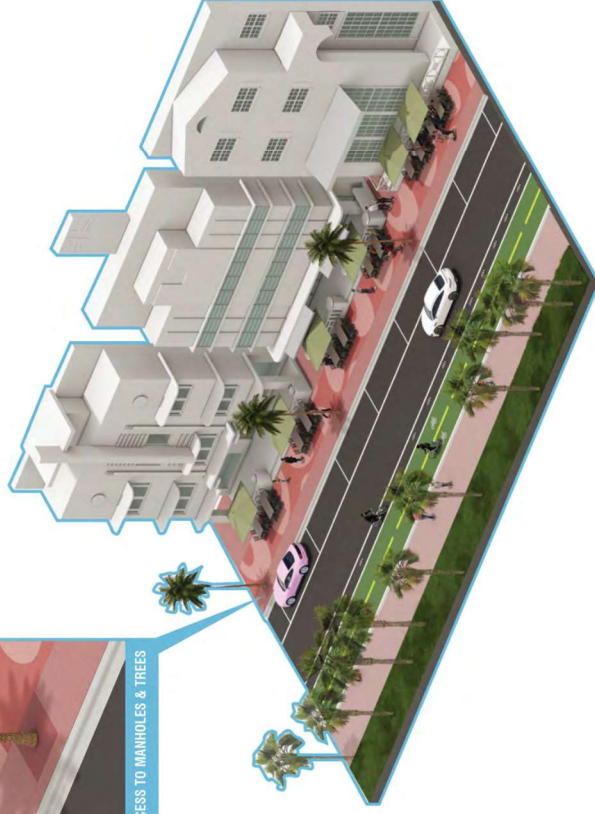
OCEAN DRIVE | LIGHTING AND SIDEWALK IMPROVEMENTS

PUBLIC MEETING  
MARCH 2025

**OPTION 03 SEATING**  
 HERRINGBONE PATTERN/ PAVERS 4"X8"



ACCESS TO MANHOLES & TREES

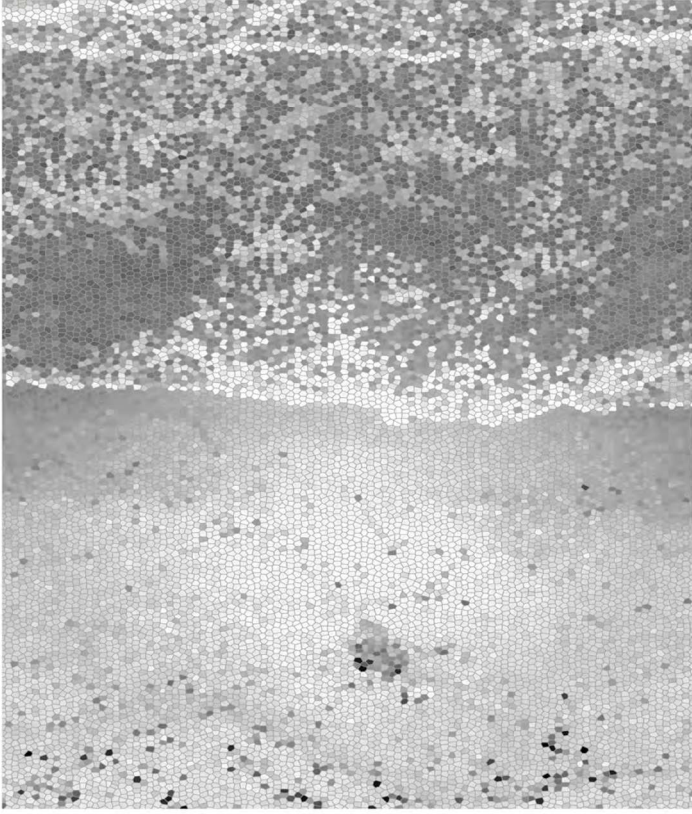


CITY OF MIAMI BEACH

OCEAN DRIVE | LIGHTING AND SIDEWALK IMPROVEMENTS

PUBLIC MEETING  
 MARCH 2025

ATLANTIC OCEAN



MIAMI BEACH ART DECO



PROPOSED ALTERNATIVES

02MODULE

## Design inspiration

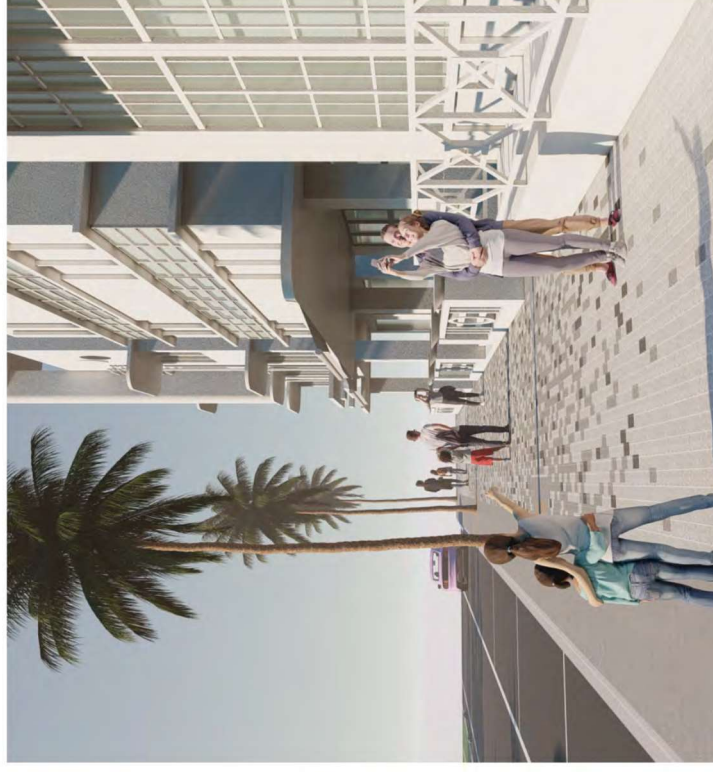


CITY OF MIAMI BEACH

OCEAN DRIVE | LIGHTING AND SIDEWALK IMPROVEMENTS

PUBLIC MEETING  
MARCH 2025

**OPTION 04 A**  
SOLDIER COURSE/ PAVERS 4"X8"

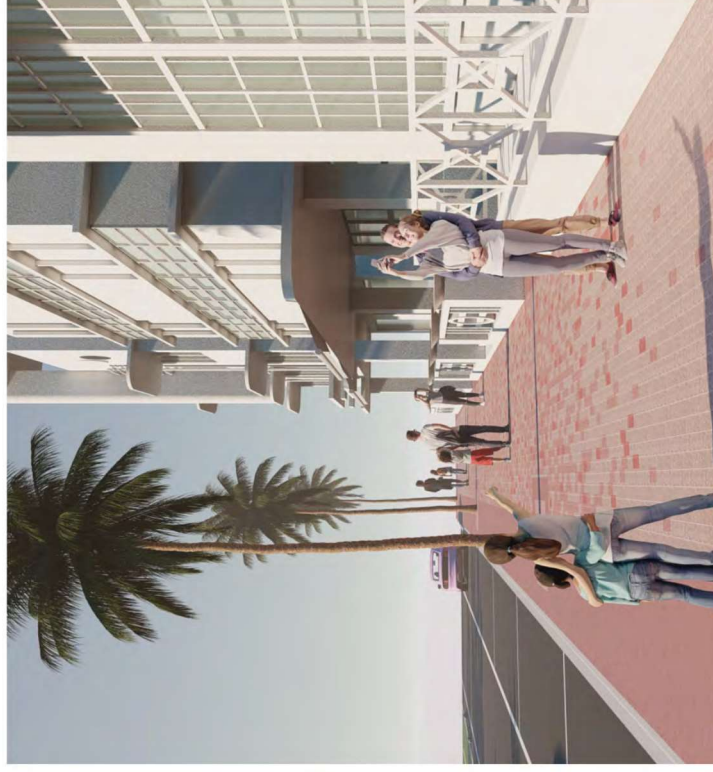


CITY OF MIAMI BEACH

OCEAN DRIVE | LIGHTING AND SIDEWALK IMPROVEMENTS

PUBLIC MEETING  
MARCH 2025

**OPTION 04 B**  
SOLDIER COURSE/ PAVERS 4"X8"



CITY OF MIAMI BEACH

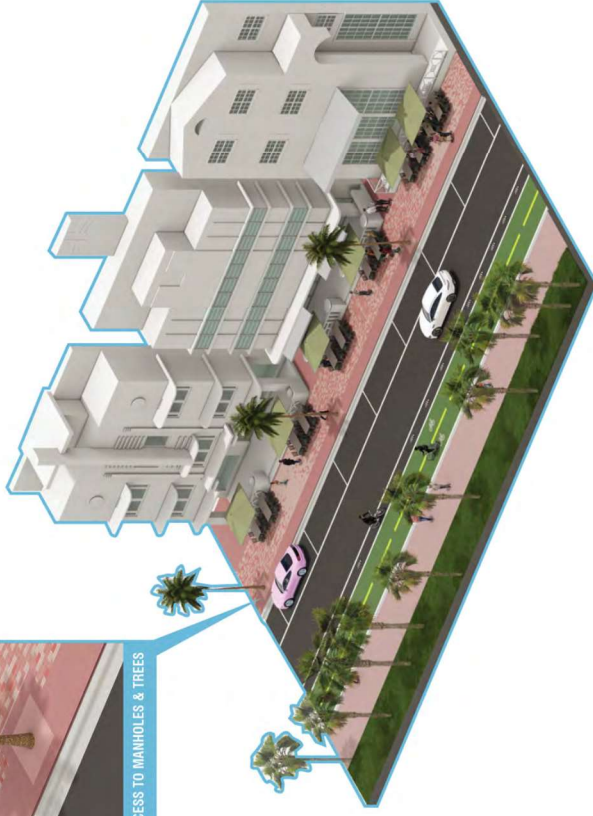
OCEAN DRIVE | LIGHTING AND SIDEWALK IMPROVEMENTS

PUBLIC MEETING  
MARCH 2025

**OPTION 04 SEATING**  
SOLDIER COURSE/ PAVERS 4"X8"



ACCESS TO MANHOLES & TREES

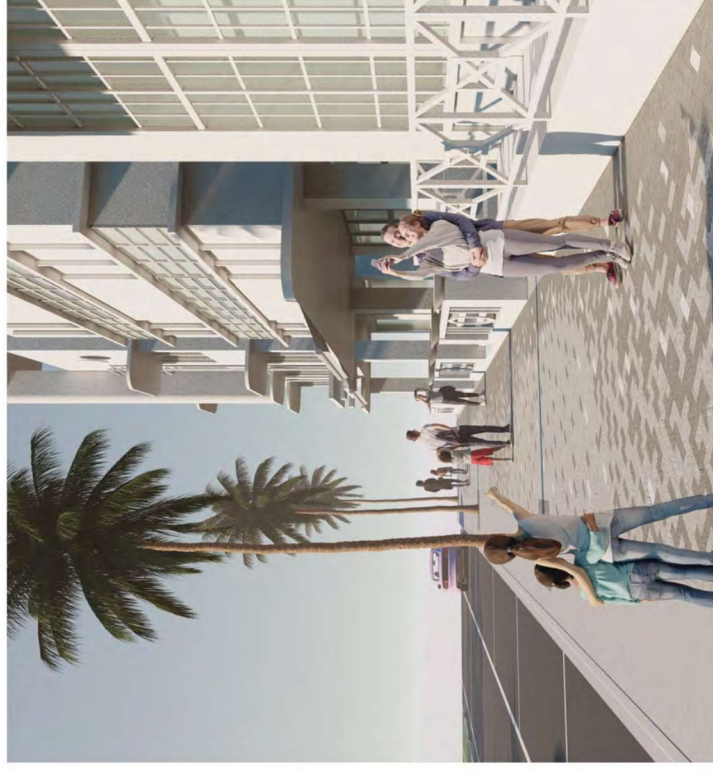


CITY OF MIAMI BEACH

OCEAN DRIVE | LIGHTING AND SIDEWALK IMPROVEMENTS

PUBLIC MEETING  
MARCH 2025

**OPTION 05 A**  
HERRINGBONE PATTERN / PAVERS 4"X8"

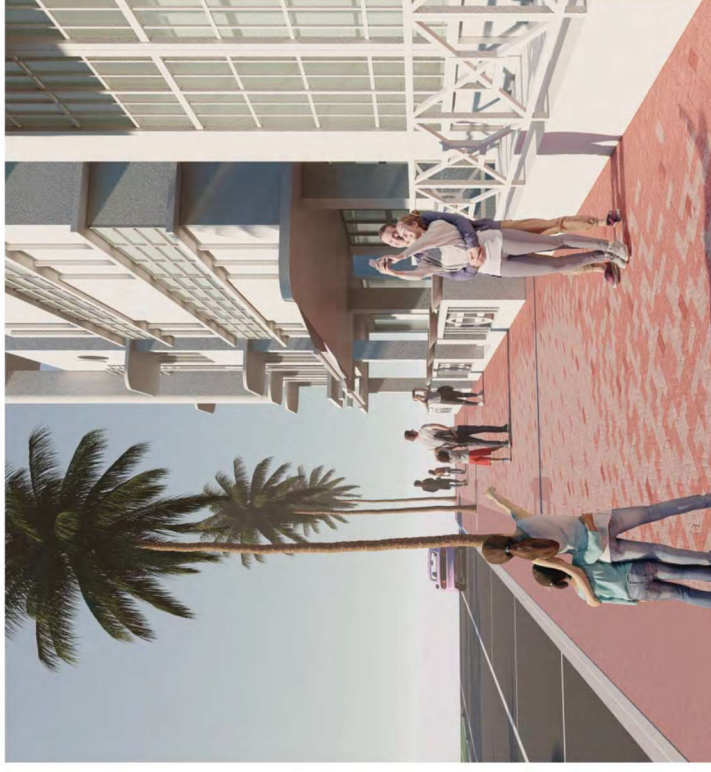


CITY OF MIAMI BEACH

OCEAN DRIVE | LIGHTING AND SIDEWALK IMPROVEMENTS

PUBLIC MEETING  
MARCH 2025

**OPTION 05 B**  
HERRINGBONE PATTERN / PAVERS 4"X8"



CITY OF MIAMI BEACH

OCEAN DRIVE | LIGHTING AND SIDEWALK IMPROVEMENTS

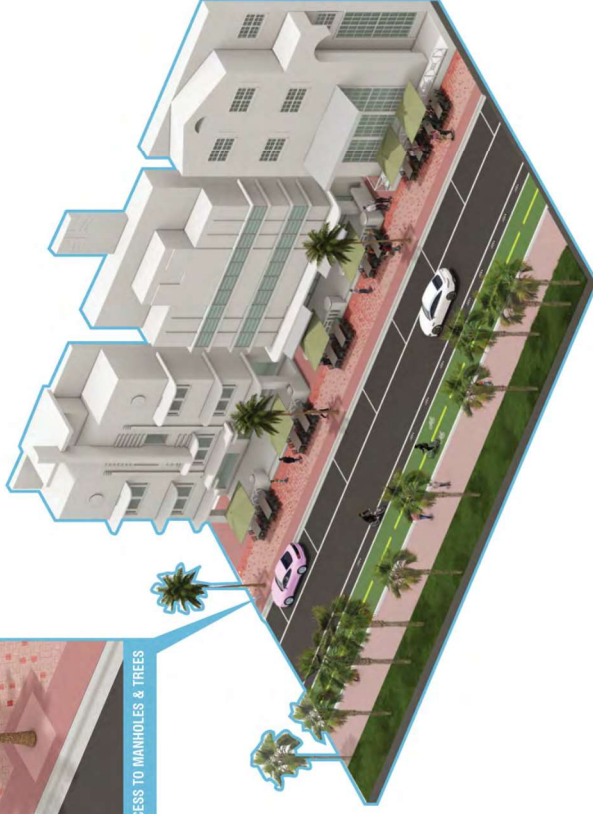
PUBLIC MEETING  
MARCH 2025

# OPTION 05 SEATING

HERRINGBONE PATTERN/ PAVERS 4"X8"



ACCESS TO MANHOLES & TREES



CITY OF MIAMI BEACH

OCEAN DRIVE | LIGHTING AND SIDEWALK IMPROVEMENTS

PUBLIC MEETING  
MARCH 2025

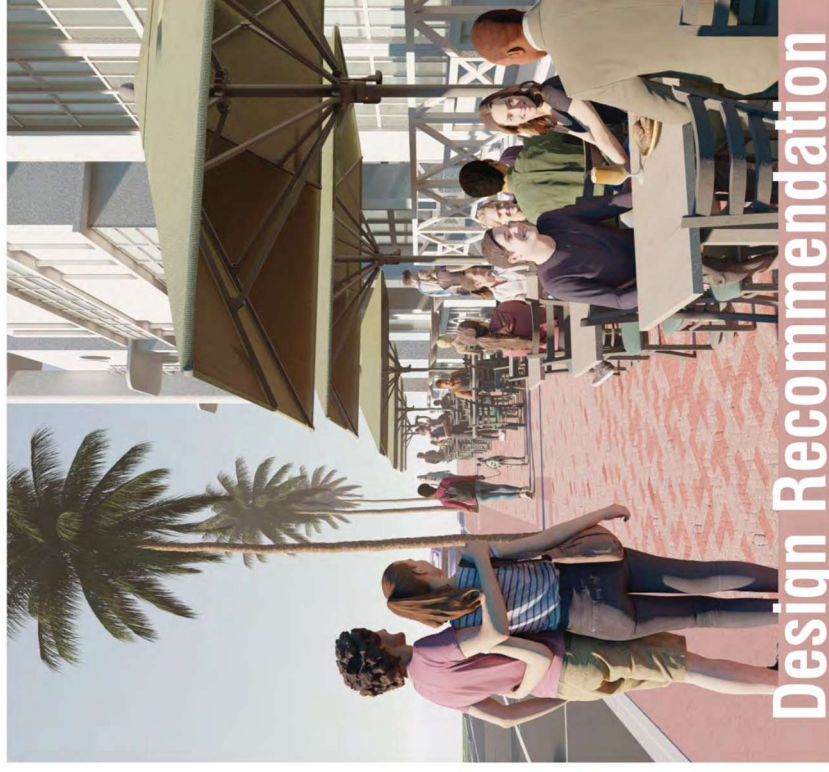
**OPTION 05 SEATING**  
 HERRINGBONE PATTERN/ PAVERS 4"X8"



ACCESS TO MANHOLES & TREES



CITY OF MIAMI BEACH



# Discuss lighting strategy for Ocean Drive



CITY OF MIAMI BEACH

OCEAN DRIVE | LIGHTING AND SIDEWALK IMPROVEMENTS

PUBLIC MEETING  
MARCH 2025

46

02MODULE

PROPOSED ALTERNATIVES

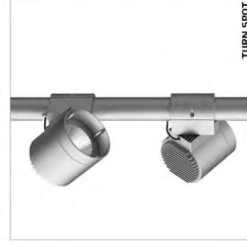
# Turn

Design: FRIS & MOUTKE Design

**Turn** by Fris & Moutke Design is a new brand in the Focus program.

The luminaires in cast aluminium have silk-edged shades in clear glass. The housing is completed by a long ring in cast aluminium or a short, opal-white acrylic ring.

**Turn** is available as a spot with reflector or with optics for asymmetrical light.



TURN SPOT

**Turn Spot** is equipped with a long ring in cast aluminium for cut-off and anti-glare.

**Turn Spot Halo** is equipped with a short, opal-white acrylic ring, opening the luminaire and offering optical guidance.

Both spots are equipped with reflector and LED with adjustable beam angles: narrow (12°), medium (19°), and wide (36°).

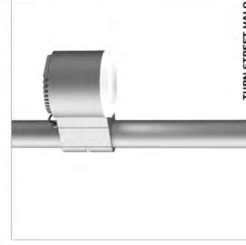
The spots can be adjusted horizontally around the post and vertically in the bracket. When holes have been bored in the post, the spots can be turned 90 degrees to both sides.



TURN SPOT HALO

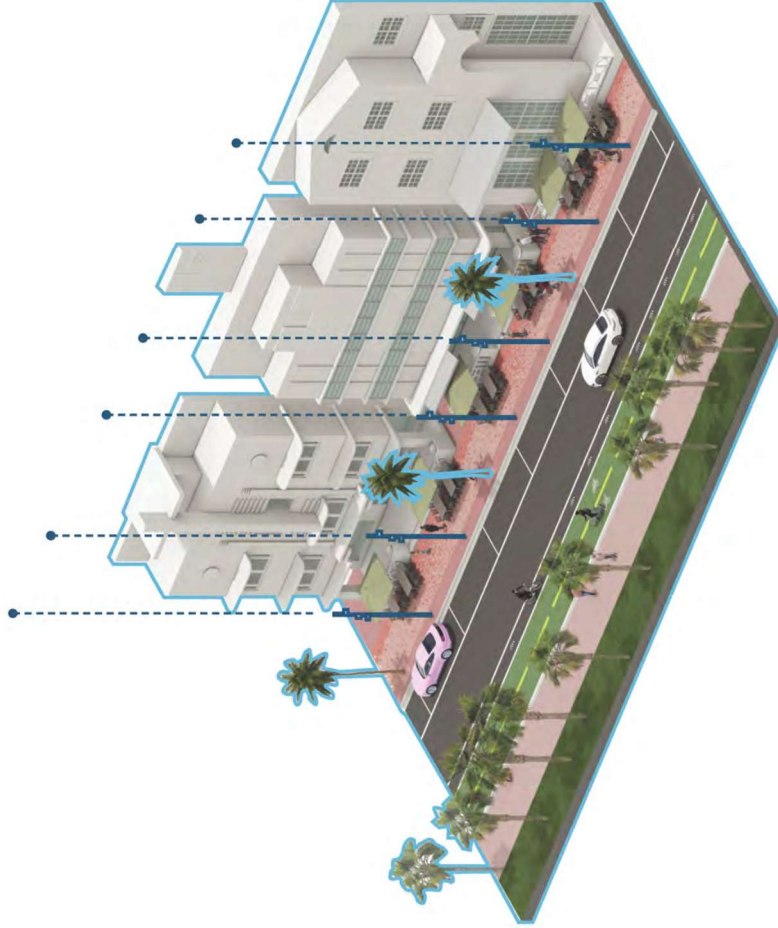
**Turn Street Halo** is available in one version only. The casing with the short, opal-white ring opens up for asymmetrical light into cycling lanes and pedestrian areas.

The street luminaire will be equipped with programmed LED and lenses for asymmetrical light.



TURN STREET HALO

Find our sales partner in your country under Contacts at [www.focus-lighting.dk](http://www.focus-lighting.dk)



## FOCUS-LIGHTING

## PROPOSED ALTERNATIVES

02MODULE

47

PUBLIC MEETING  
MARCH 2025

OCEAN DRIVE | LIGHTING AND SIDEWALK IMPROVEMENTS



CITY OF MIAMI BEACH



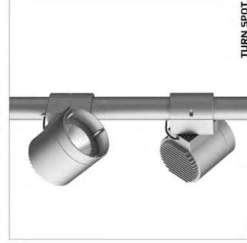
## Turn

Design: FRIS & MOLTKE Design

**Turn** by Fris & Moltke Design is a new brand in the Focus program.

The luminaires in cast aluminium have silk-edged shades in clear glass. The housing is completed by a long ring in cast aluminium or a short, opal-white acrylic ring.

**Turn** is available as a spot with reflector or with optics for asymmetrical light.



TURN SPOT

**Turn Spot** is equipped with a long ring in cast aluminium for cut-off and anti-glare.

**Turn Spot Halo** is equipped with a short, opal-white acrylic ring, opening the luminaire and offering optical guidance.

Both spots are equipped with reflector and LED with light distribution in three angles: narrow (12°), medium (15°), and wide (38°).

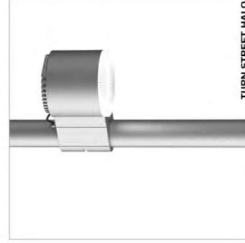
The spots can be adjusted horizontally around the post and vertically in the bracket. When holes have been bored in the post, the spots can be turned 30 degrees to both sides.



TURN SPOT HALO

**Turn Street Halo** is available in one version only. The luminaire is mounted on a bracket and can be adjusted up for asymmetrical light onto cycling lanes and pedestrian areas.

The street luminaire will be equipped with programmed LED and lenses for asymmetrical light.



TURN STREET HALO

Find our sales partner in your country under Contacts at [www.focus-lighting.dk](http://www.focus-lighting.dk)



CITY OF MIAMI BEACH

OCEAN DRIVE | LIGHTING AND SIDEWALK IMPROVEMENTS

PUBLIC MEETING  
MARCH 2025

48

02MODULE

PROPOSED ALTERNATIVES

## FOCUS-LIGHTING



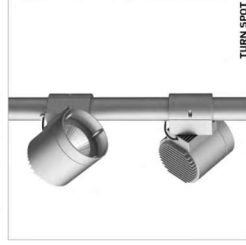
## Turn

Design: FRIS & MOUTKE Design

**Turn** by Fris & Moutke Design is a new brand in the Focus program.

The luminaires in cast aluminium have silk-edged shades in clear glass. The housing is completed by a long ring in cast aluminium or a short, opal-white acrylic ring.

**Turn** is available as a spot with reflector or with optics for asymmetrical light.

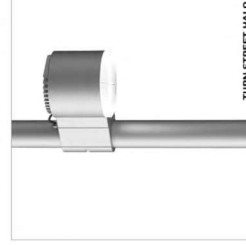


**Turn Spot** is equipped with a long ring in cast aluminium for cut-off and anti-glare.

**Turn Spot Halo** is equipped with a short, opal-white acrylic ring, opening the luminaire and offering optical guidance.

Both spots are equipped with reflector and LED optics. The reflector has three angles: narrow (12°), medium (19°), and wide (36°).

The spots can be adjusted horizontally around the post and vertically in the bracket. When holes have been bored in the post, the spots can be turned 90 degrees to both sides.



**Turn Street Halo** is available in one version only. The casing with the short, opal-white ring opens up for asymmetrical light into cycling lanes and pedestrian areas.

The street luminaire will be equipped with programmed LED and lenses for asymmetrical light.

Find our sales partner in your country under Contacts at [www.focus-lighting.dk](http://www.focus-lighting.dk)



CITY OF MIAMI BEACH

OCEAN DRIVE | LIGHTING AND SIDEWALK IMPROVEMENTS

PUBLIC MEETING  
MARCH 2025

49

02MODULE

PROPOSED ALTERNATIVES



## Recommended Fixture

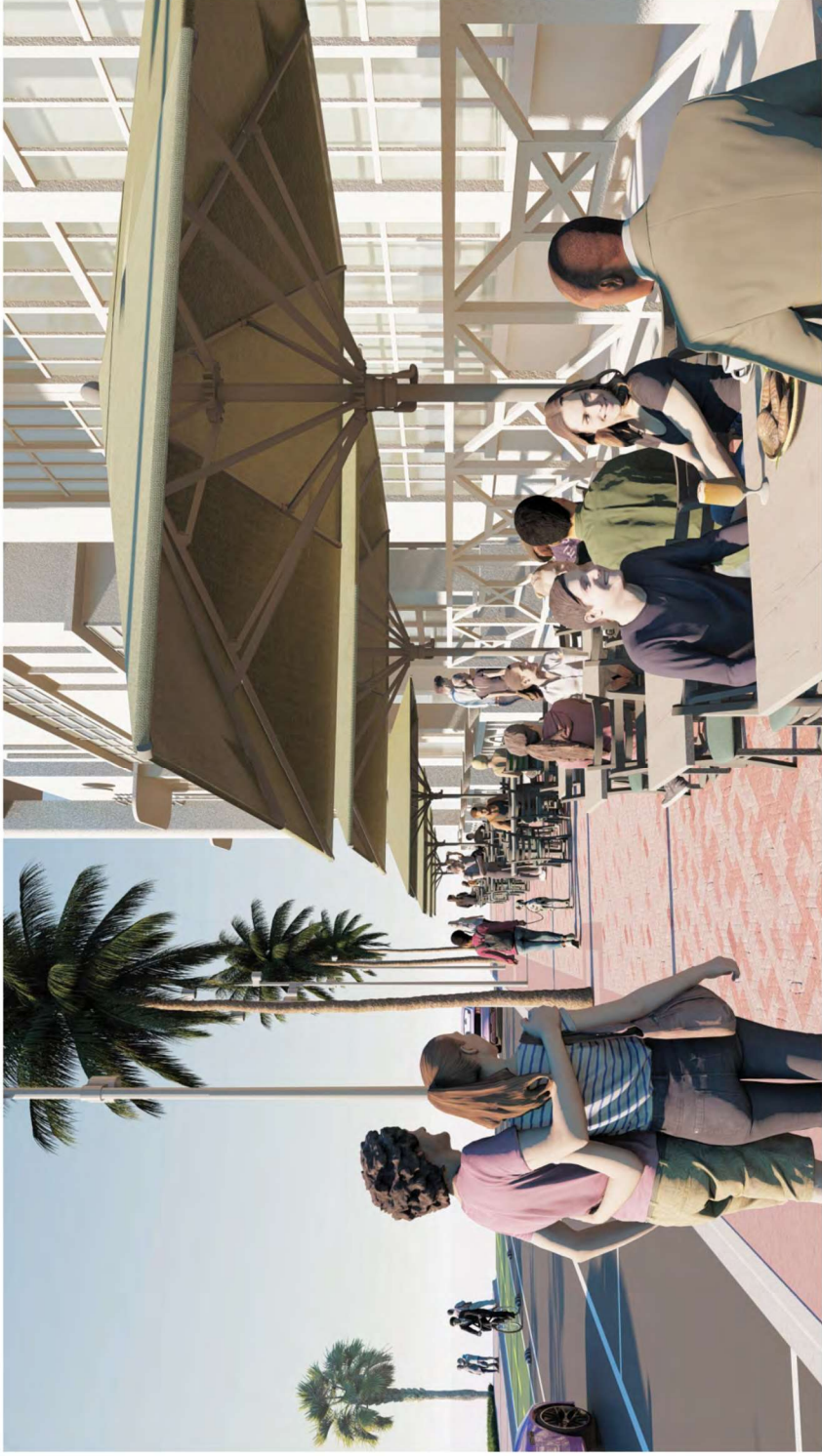


CITY OF MIAMI BEACH

OCEAN DRIVE | LIGHTING AND SIDEWALK IMPROVEMENTS

PUBLIC MEETING

MARCH 2025



CITY OF MIAMI BEACH

OCEAN DRIVE | LIGHTING AND SIDEWALK IMPROVEMENTS

PUBLIC MEETING  
MARCH 2025



LIGHT FIXTURES ALLOW FOR THE  
INCORPORATION OF TURTLE-FRIENDLY  
AMBER LIGHTING AND DIRECTIONAL  
SHIELDS



CITY OF MIAMI BEACH

OCEAN DRIVE | LIGHTING AND SIDEWALK IMPROVEMENTS

PUBLIC MEETING  
MARCH 2025



CITY OF MIAMI BEACH

OCEAN DRIVE | LIGHTING AND SIDEWALK IMPROVEMENTS

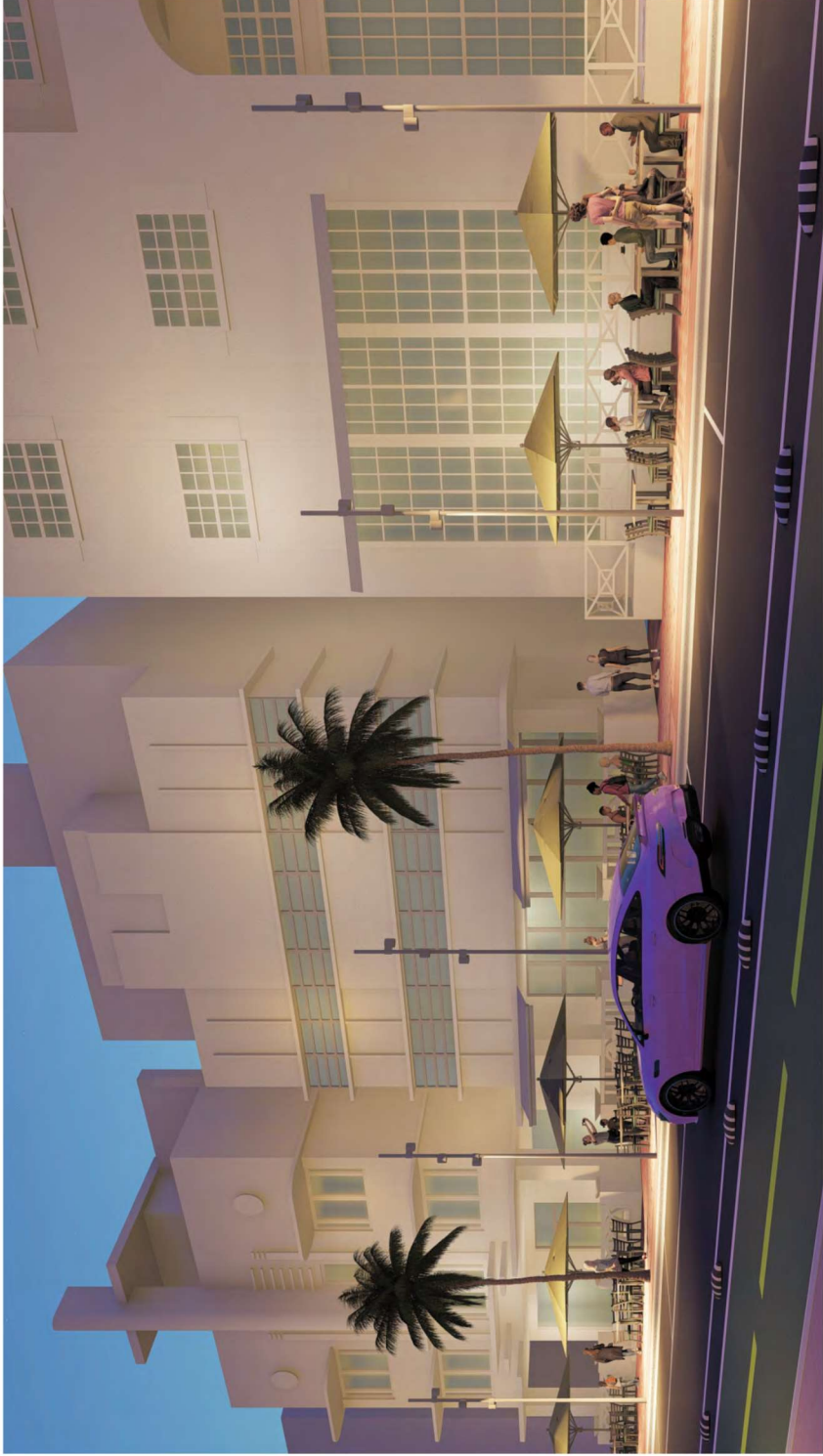
PUBLIC MEETING  
MARCH 2025

53

## 02MODULE

### PROPOSED ALTERNATIVES

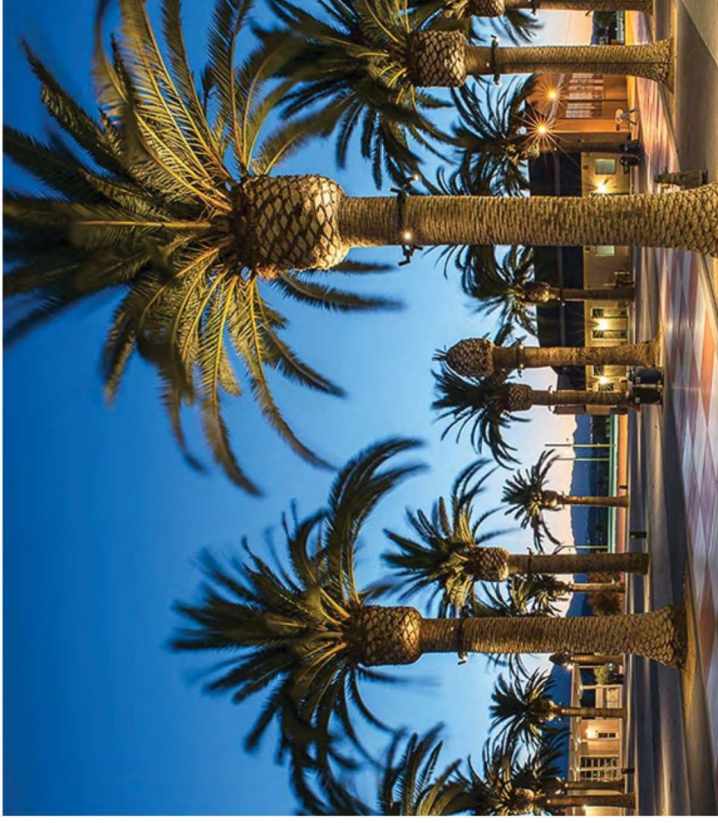




CITY OF MIAMI BEACH

OCEAN DRIVE | LIGHTING AND SIDEWALK IMPROVEMENTS

PUBLIC MEETING  
MARCH 2025



## Design Recommendation



CITY OF MIAMI BEACH

OCEAN DRIVE | LIGHTING AND SIDEWALK IMPROVEMENTS

PUBLIC MEETING  
MARCH 2025

55

02MODULE

PROPOSED ALTERNATIVES

# Summary of Recommendations

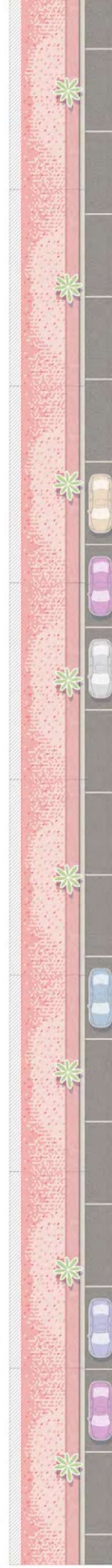
# 03



CITY OF MIAMI BEACH

OCEAN DRIVE | LIGHTING AND SIDEWALK IMPROVEMENTS

PUBLIC MEETING  
MARCH 2025



## Design Recommendations



CITY OF MIAMI BEACH

OCEAN DRIVE | LIGHTING AND SIDEWALK IMPROVEMENTS

PUBLIC MEETING  
MARCH 2025

57

03MODULE

SUMMARY OF RECOMMENDATIONS