

MIAMI BEACH



DRB21-0704 RFI #1 DRB PRESENTATION: RIGHT OF WAY

West Avenue Phase II Improvements
City of Miami Beach, FL

PRESENTATION DISCUSSION POINTS

**1. PROJECT
LOCATION:
LIGHTING**

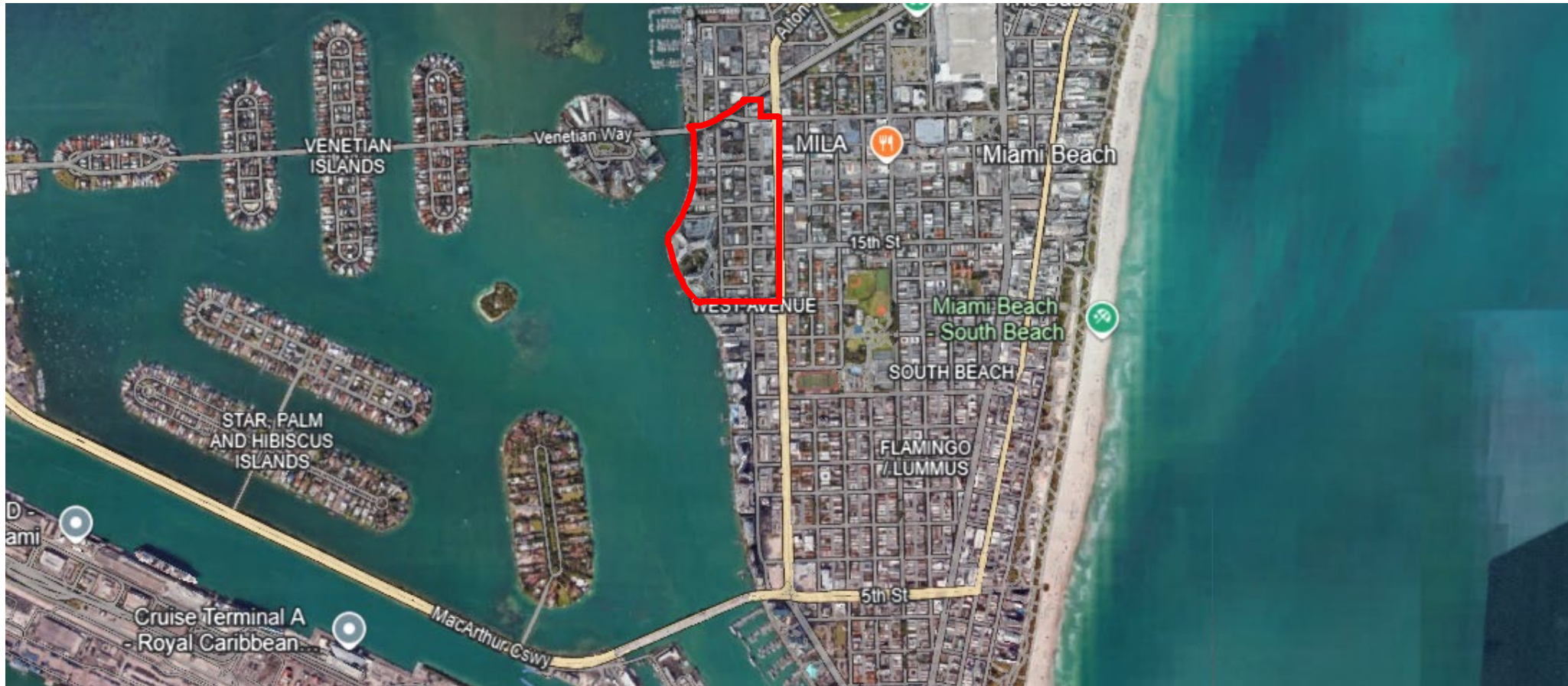
**2. PROJECT
LOCATION:
3 GENERATORS**

**3. EXISTING VS.
PROPOSED
CONDITIONS**

- 14th Street Generator
- 17th Street Generator
- Pedestrian & Street Lighting

**4. MATERIALS
TO BE USED**

PROJECT AREA AERIAL VIEW: **LIGHTING**

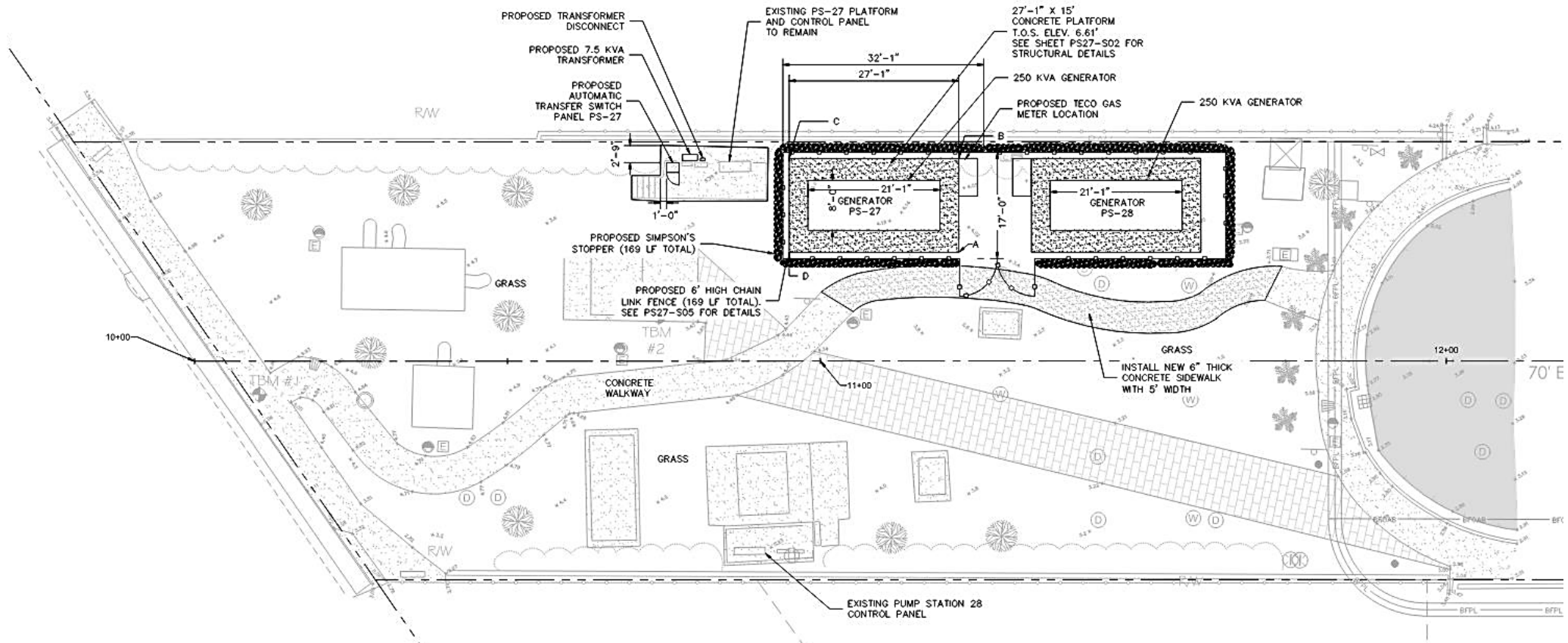


PROJECT AREA AERIAL VIEW: 3 GENERATORS



EXISTING VS. PROPOSED

14TH STREET GENERATORS: DESIGN PLANS



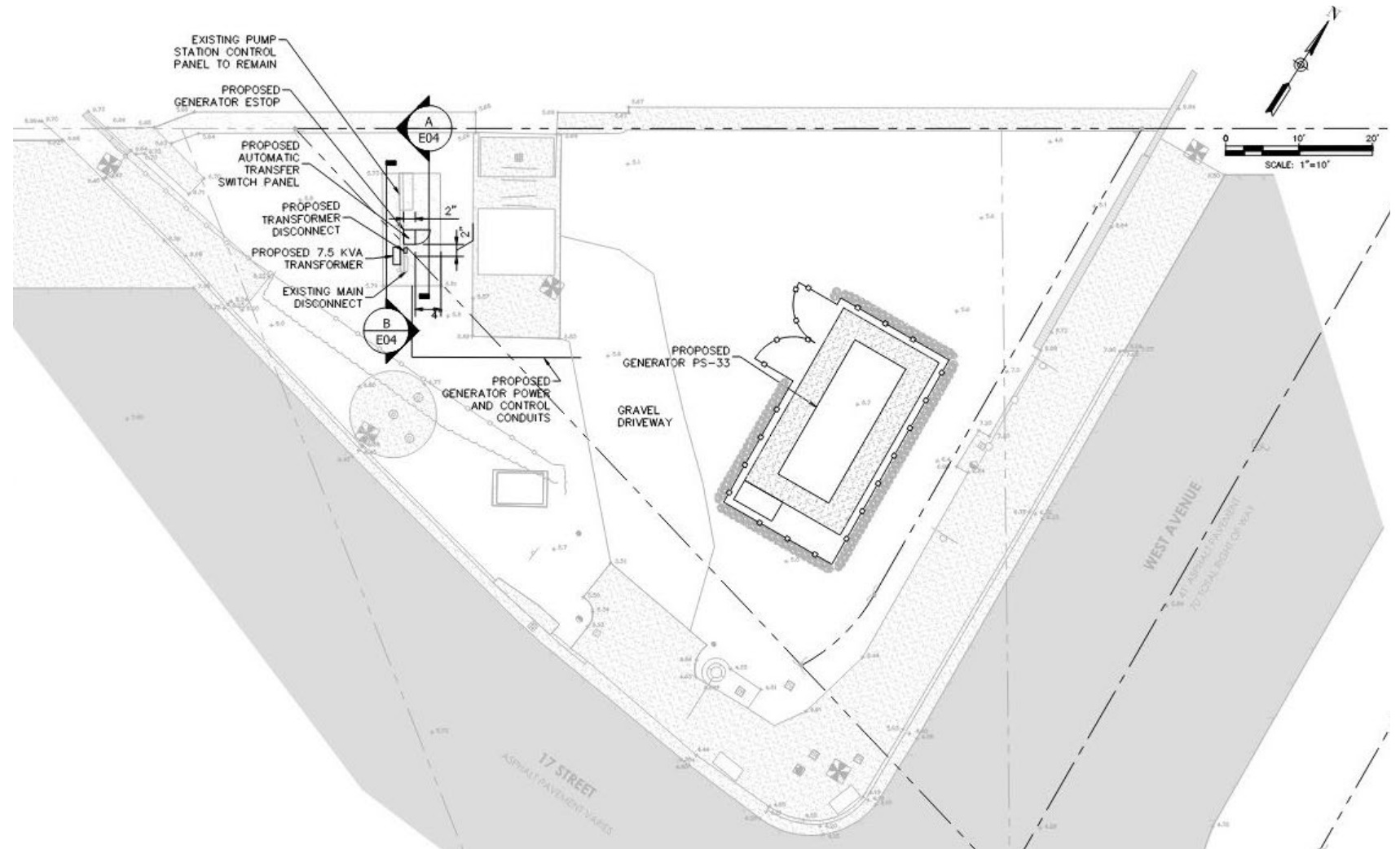
14TH ST. GENERATORS: EXISTING CONDITIONS



14TH ST. GENERATORS: PROPOSED ARTIST RENDERINGS



17TH STREET GENERATOR: DESIGN PLANS



17TH STREET GENERATOR: EXISTING CONDITIONS



17TH ST. GENERATORS: PROPOSED ARTIST RENDERINGS



PEDESTRIAN & STREET LIGHTING: EXISTING VS. PROPOSED CONDITIONS



PEDESTRIAN & STREET LIGHTING: EXISTING VS. PROPOSED CONDITIONS



Existing Street Light



Proposed Street Light

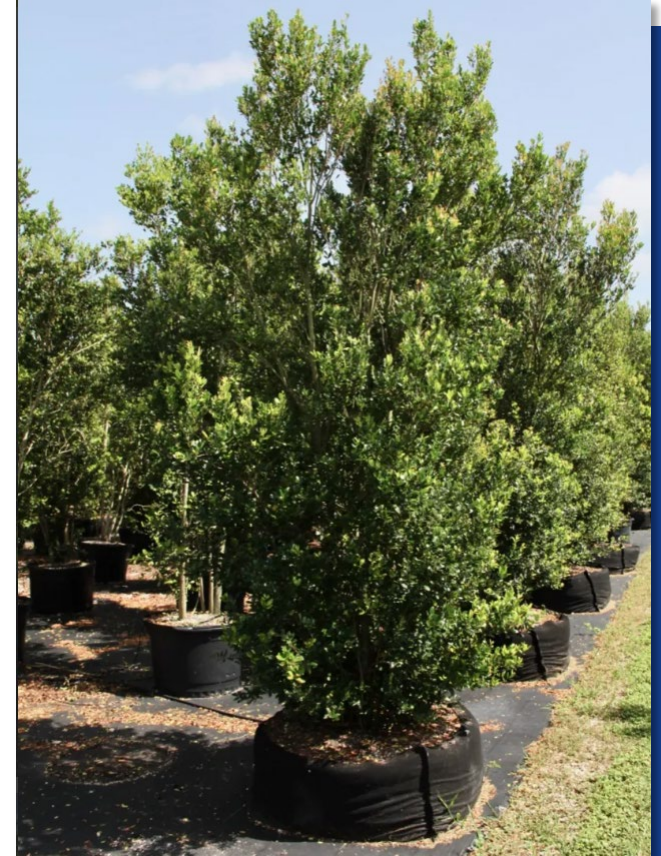


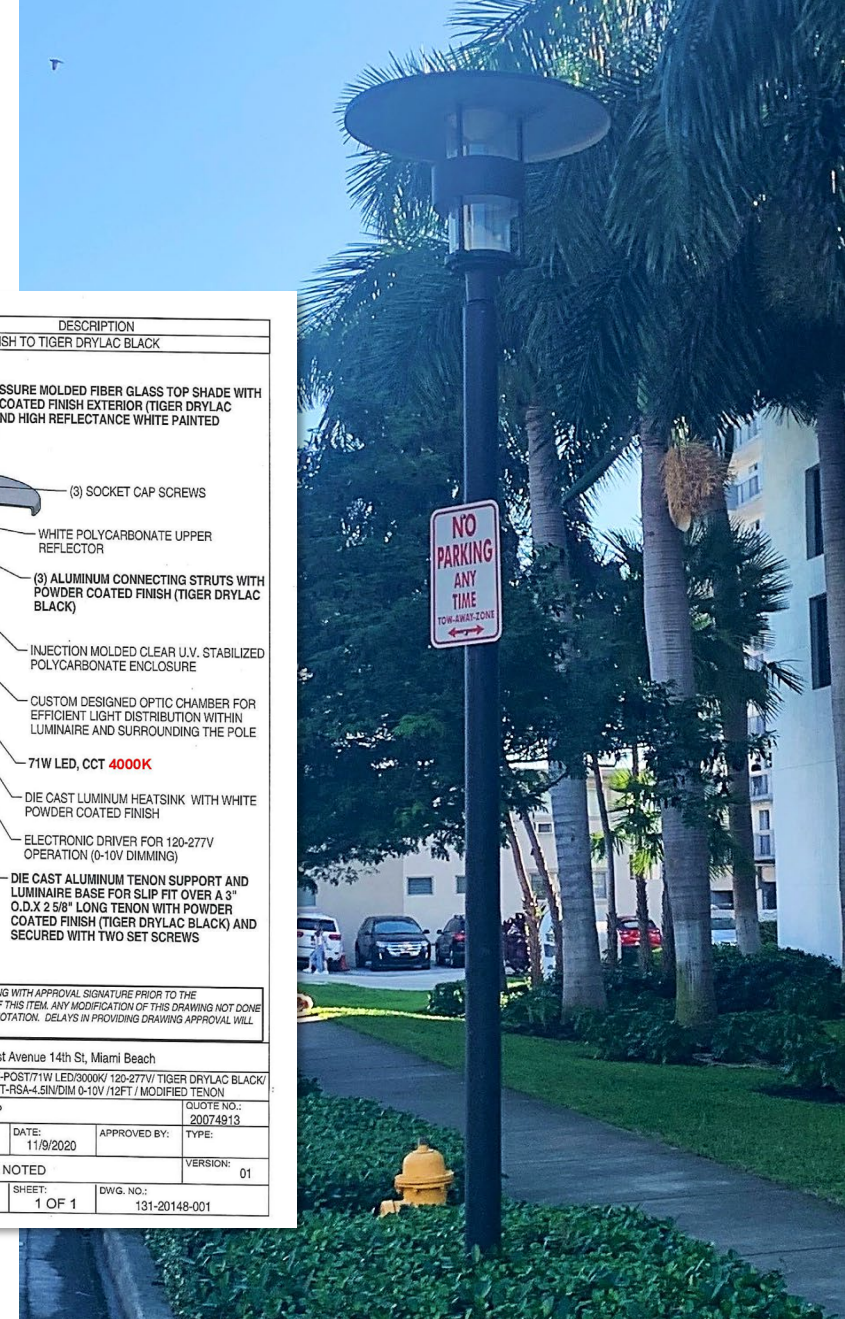
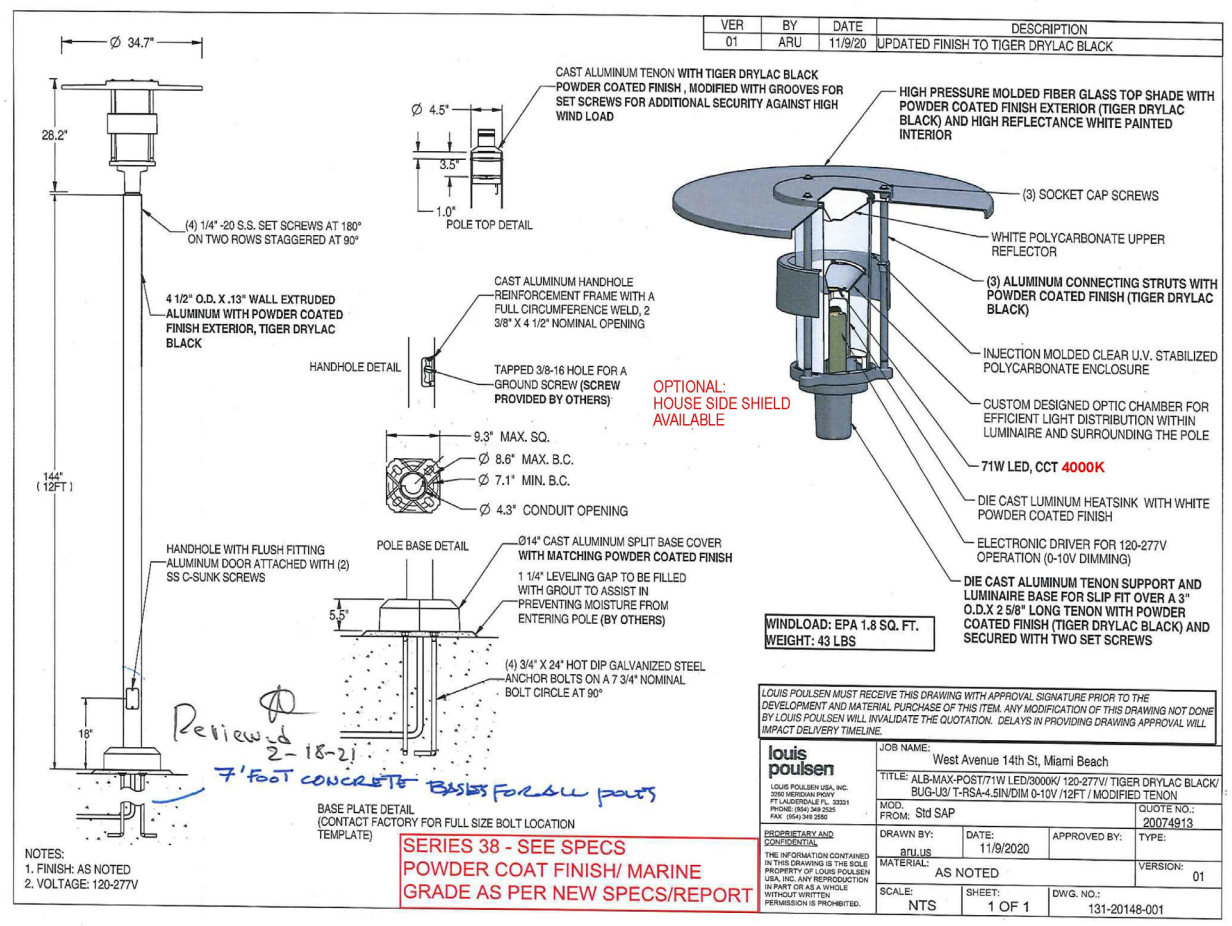
Proposed Pedestrian Light

MATERIALS TO BE USED

LANDSCAPING MATERIAL

Simpson Stopper Trees





LIGHTING MATERIAL: STREET LIGHTS

GL1970 GALLERY SERIES

LED

Shade Style



Straight Edge (S)



Flared Edge (F)



Bell Edge (B)



Round with Round Rim (RR)



Round with Flared Rim (RF)



Round with Square Rim (RS)

Dimensions

GL1970	SHADE	S	F	B	RF	RR	RS
HOUSING	Diameter	23.9"	23.9"	26"	25"	24.5"	23.8"
BF_	Height	17.9"	16.6"	18.2"	19.6"	19.1"	18.6"
GR_	Height	17.9"	16.6"	18.2"	19.6"	19.1"	18.6"
GW_	Height	17.9"	16.6"	18.2"	19.6"	19.1"	18.6"
SR_	Height	17.9"	16.6"	18.2"	19.6"	19.1"	18.6"



SternbergLighting
ESTABLISHED 1923

800-621-3376
555 Lawrence Ave., Roselle, IL 60172
contactus@sternberglighting.com
www.sternberglighting.com

©21 STERNBERG LIGHTING. ALL RIGHTS RESERVED. PRINTED IN THE USA.

PAGE 7



Jose Caraballo, PE

SVP, Director of Engineering

O: 305.827.2220 | C: 786.328.5395

jcaraballo@cesconsult.com

cesconsult.com



MIAMI BEACH



Thank you
