

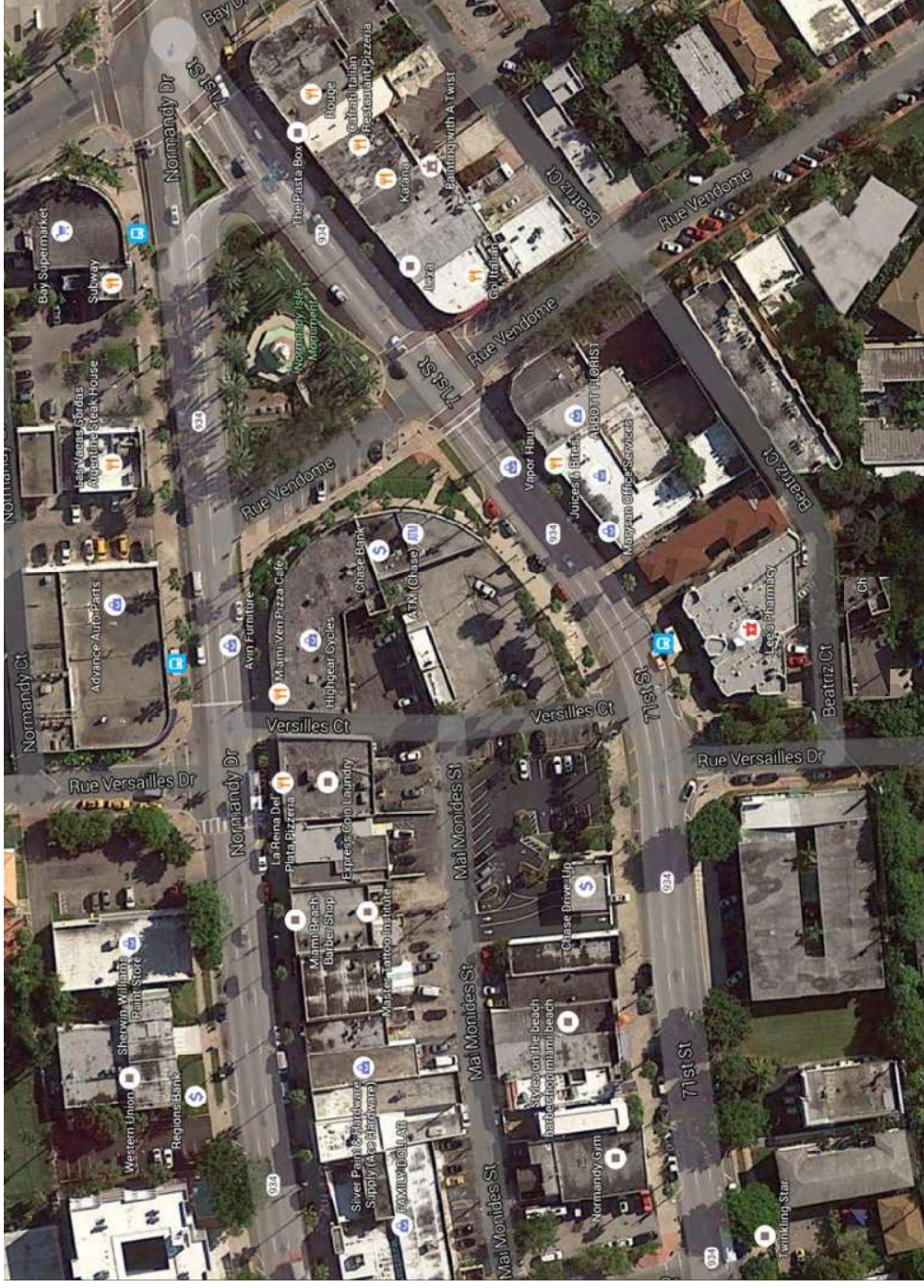
ATTACHMENT A



EVERGLADES CONCOURSE
053-1109 7th STREET, MIAMI BEACH, FLORIDA

SKLARArchitecture™
WWW.SKARCHITECT.COM

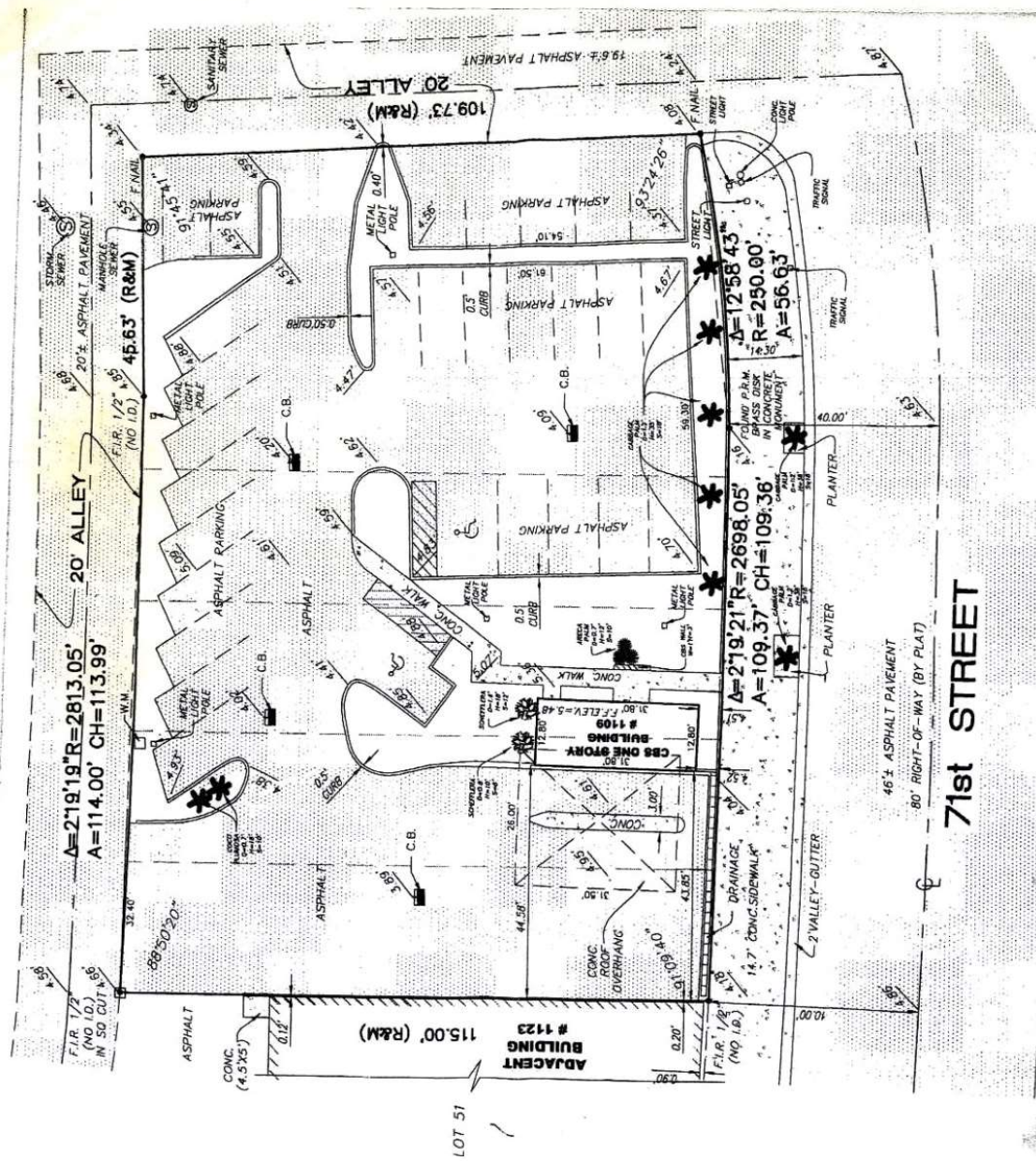
1101 71st miami beach



Imagery ©2016 DigitalGlobe, Sanborn, U.S. Geological Survey, Map data ©2016 Google

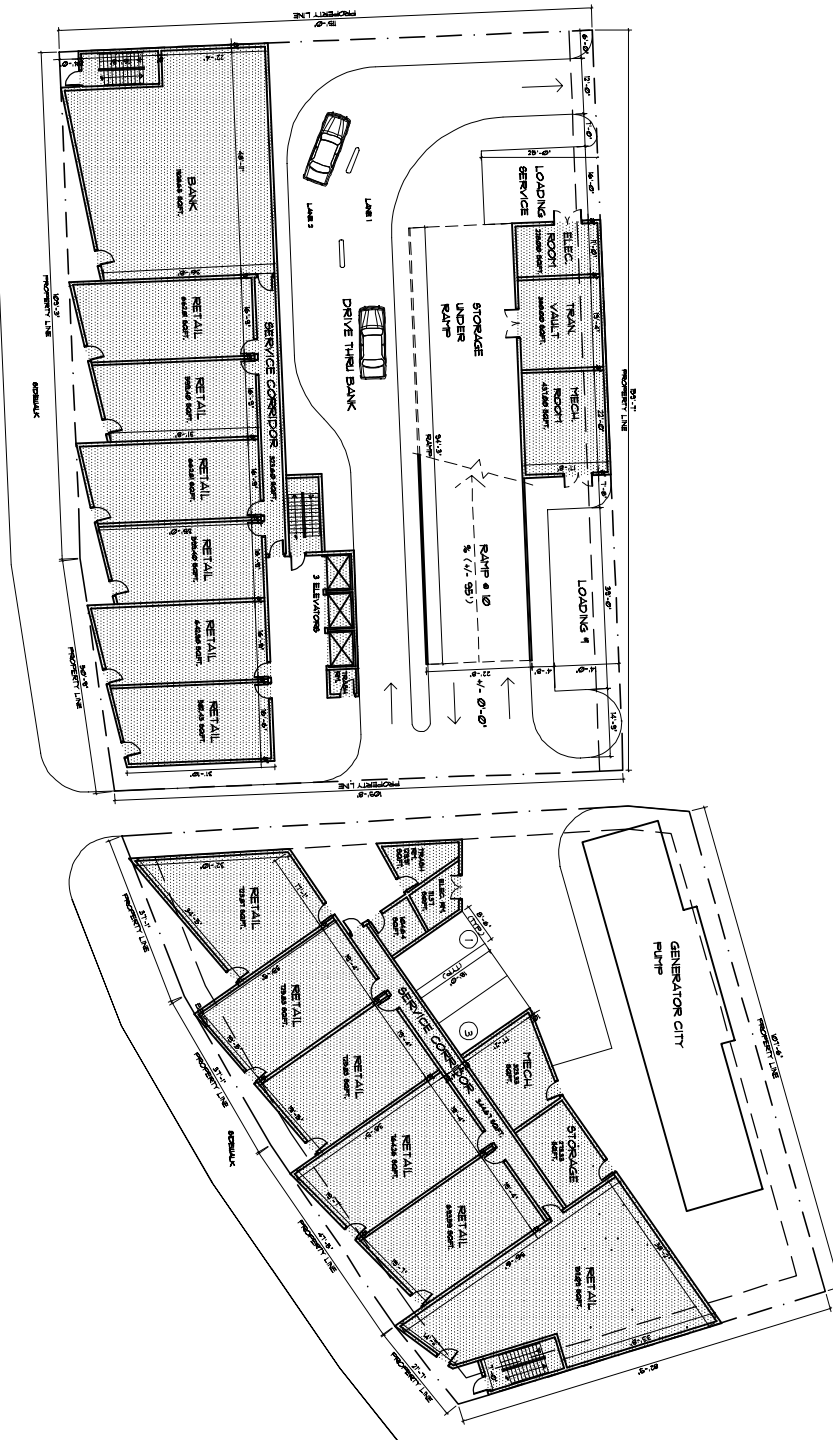
100 ft

Google Maps



PROPOSED IMPROVEMENTS TO EXISTING PARKING GARAGE AND APARTMENT BUILDING, SOUTH EVERGLADES CONCOURSE, MIAMI BEACH, FLORIDA. PREPARED BY SKIDMORE, OWINGS & MERRILL LLP.

GROUND FLOOR PLAN
SCALE: 1/8" = 1'-0"



FLOOR SUMMARY	
1st FLOOR	14,071 sq. ft.
2nd FLOOR	32,094 sq. ft.
3rd FLOOR	32,094 sq. ft.
4th FLOOR	32,094 sq. ft.
5th FLOOR	13,833 sq. ft.
TOTAL	124,286 sq. ft.

RETAIL - 1,000 SQ. FT.	
1st FLOOR	3
2nd FLOOR	56
3rd FLOOR	63
4th FLOOR	66
TOTAL	128

- ☐ RETAIL UNIT
- ☐ MECH. ROOM
- ☐ ELEC. ROOM
- ☐ STORAGE
- ☐ DRIVE THRU BANK
- ☐ SERVICE CORRIDOR
- ☐ ELEVATORS
- ☐ RAMP
- ☐ STAIRS
- ☐ LOADING DOCK
- ☐ GENERATOR CITY PLANT

DATE: 02/16/06
PROJECT: 04-047

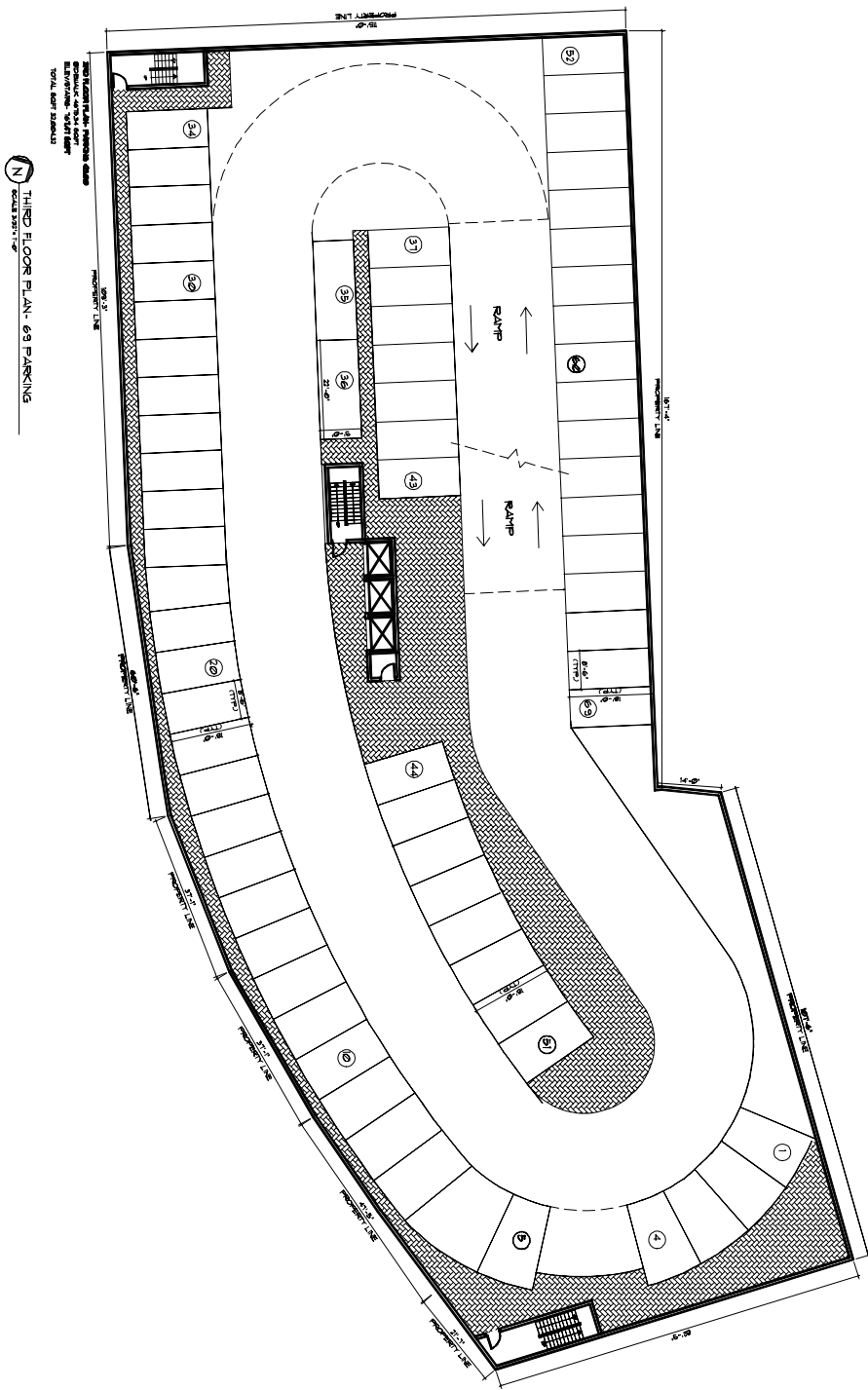
REVISIONS
FLOOR PLANS

REVISIONS
FLOOR PLANS

PARKING GARAGE AND APARTMENT
EVERGLADES CONCOURSE
South Everglades Concourse
Miami Beach, Florida

SKIDMORE
OWINGS & MERRILL
ARCHITECTS
1101 N. MIAMI AVENUE, SUITE 1900
MIAMI, FLORIDA 33132
TEL: 305.575.1000
FAX: 305.575.1001
WWW.SKMOM.COM
PROJECT: 04-047
DATE: 02/16/06

PROPOSED IMPROVEMENTS TO EXISTING PARKING GARAGE AND APARTMENT CONDOMINIUMS FOR THE EVERGLADES CONCOURSE IN MIAMI BEACH, FLORIDA. SEE SHEET 5E\CD-A-3 FOR THE EXISTING GARAGE AND APARTMENT CONDOMINIUMS.



- ☐ MECHANICAL
- ☐ ELECTRICAL
- ☐ CIVIL
- ☐ STRUCTURAL
- ☐ CONSTRUCTION
- ☐ OTHER

DATE: 02/16/06

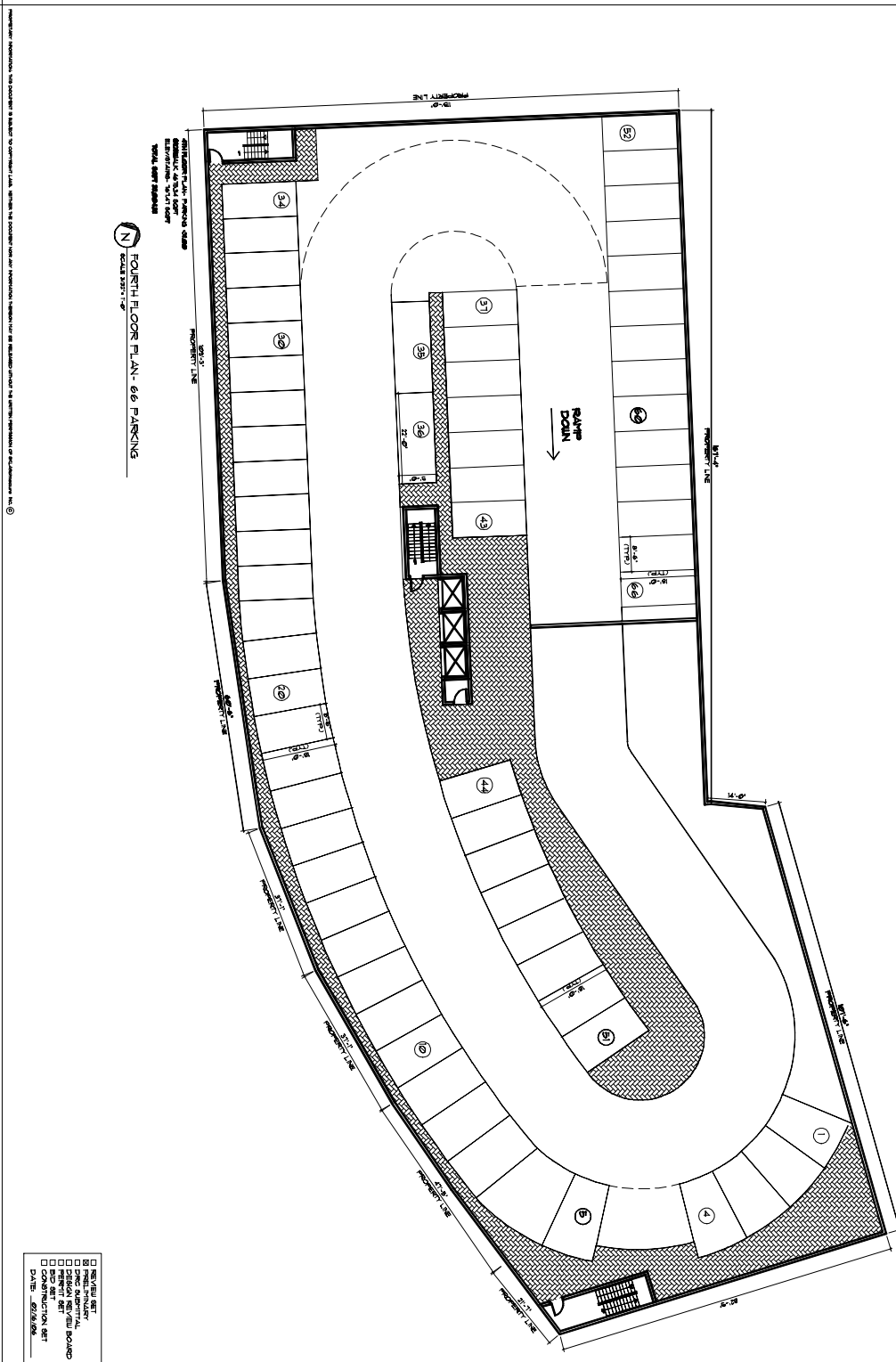
A-3

PROPOSED FLOOR PLANS

PARKING GARAGE AND APARTMENT EVERGLADES CONCOURSE

South Everglades Concourse
Miami Beach, Florida

KLING STUBBINS
ARCHITECTS
1101 N. MIAMI AVENUE, SUITE 1000
MIAMI, FLORIDA 33132
TEL: 305.372.4600
FAX: 305.372.4601
WWW.KLINGSTUBBINS.COM



DATE : 02/16/06

PROJECT 04-047

4-4

FLOOR PLANS

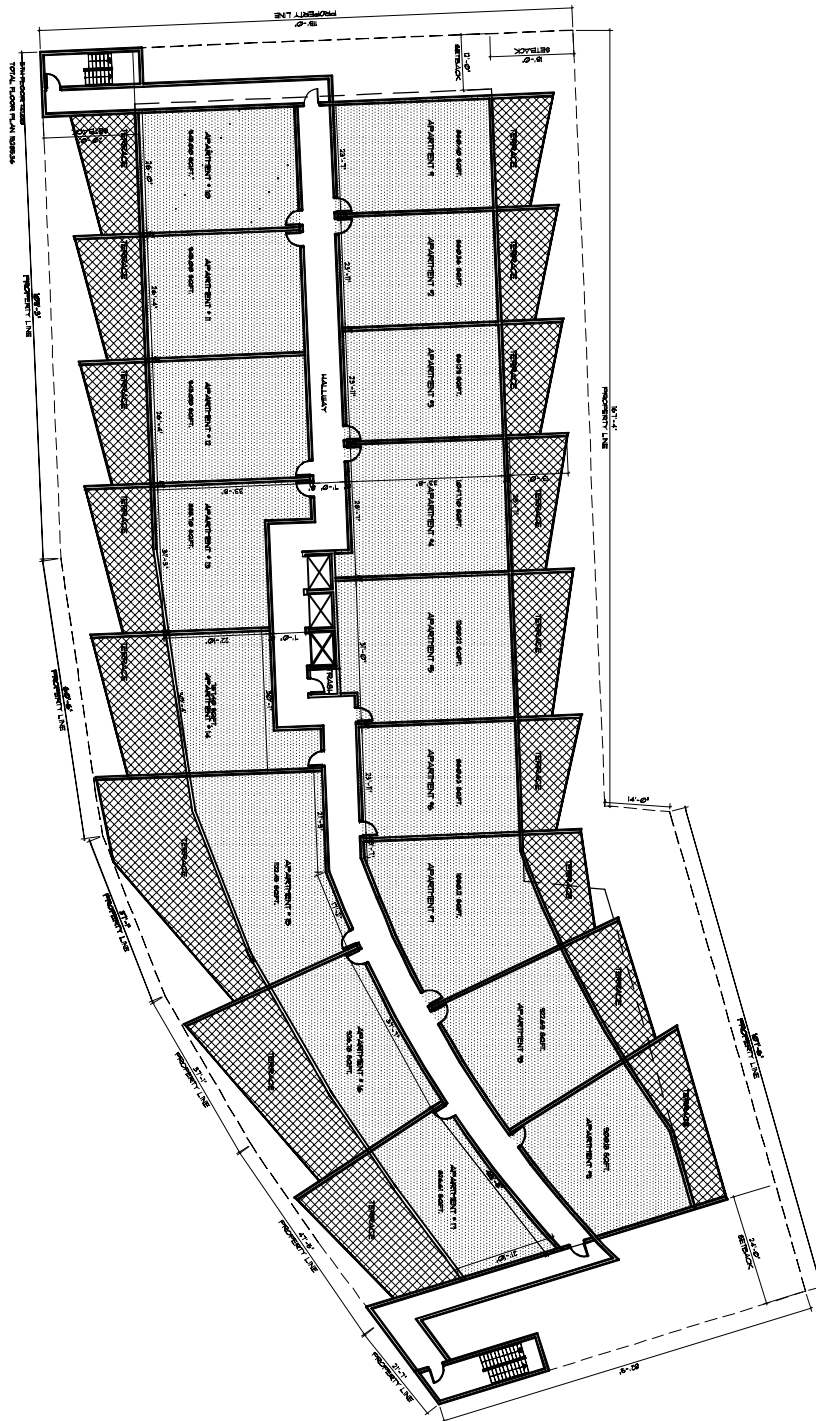
RECORDED BY:
R. G. CLARKPA
E
So
Mu

PARKING GARAGE AND APARTMENT
EVERGLADES CONCOURSE
South Everglades Concourse
Miami Beach, Florida

SKLAR *Optictive*
DESIGN ASSOCIATES
2310 HOLLWOOD BLVD.,
HOLLWOOD, FL 33020
www.sklaroptical.com
TEL. • (784) 225-2721
FAX • (784) 225-6732
AA 000028-9
ID 0000034
NCARB CERTIFIED

PROPOSED IMPROVEMENTS TO EXISTING PARKING GARAGE AND APARTMENT BUILDING, SOUTH EVERGLADES CONCOURSE, MIAMI BEACH, FLORIDA. PREPARED BY: SKIDMORE OWINGS MERRILL LLP. DATE: 02/16/06.

FIFTH FLOOR PLAN
SCALE: 1/8" = 1'-0"



- REVIEW SET
- FINAL PLAN
- CONSTRUCTION SET
- DATE: 02/16/06

DATE: 02/16/06

A-5

PROPOSED
FLOOR PLANS

REVISIONS

PARKING GARAGE AND APARTMENT
EVERGLADES CONCOURSE
South Everglades Concourse
Miami Beach, Florida

SKIDMORE
OWINGS
MERRILL
LLP
1101 N. MIAMI AVENUE
SUITE 1900
MIAMI, FL 33132
TEL: 305.581.1000
FAX: 305.581.1001
WWW.SKMOM.com