

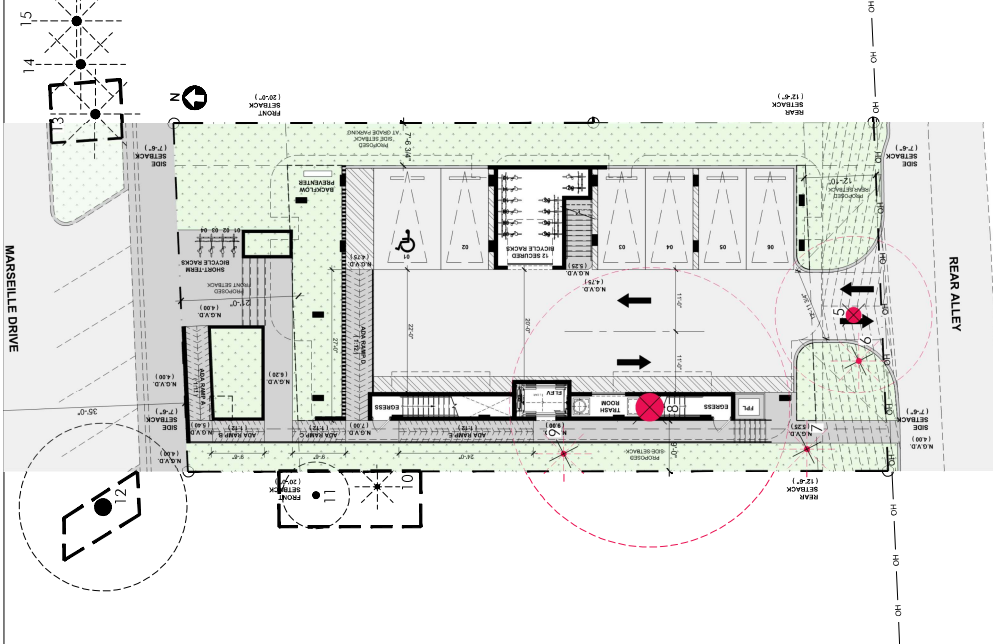
914 MARSEILLE DRIVE
914 MARSEILLE DRIVE
MIAMI BEACH, FL



KEY	TITLE
ISSUED FOR: HPB24-0629	EXISTING TREE DISPOSITION PLAN



DATE	03.09.2025
SCALE	as noted
SHEET	LAI.01

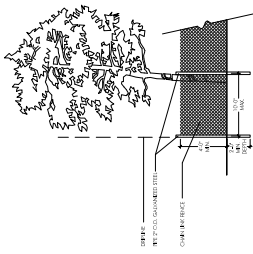


EXISTING TREE DISPOSITION PLAN

40' 20' 10'

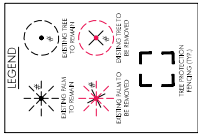
1 4A1.01

SCALE: 1" = 10'



TREE PROTECTION DETAIL

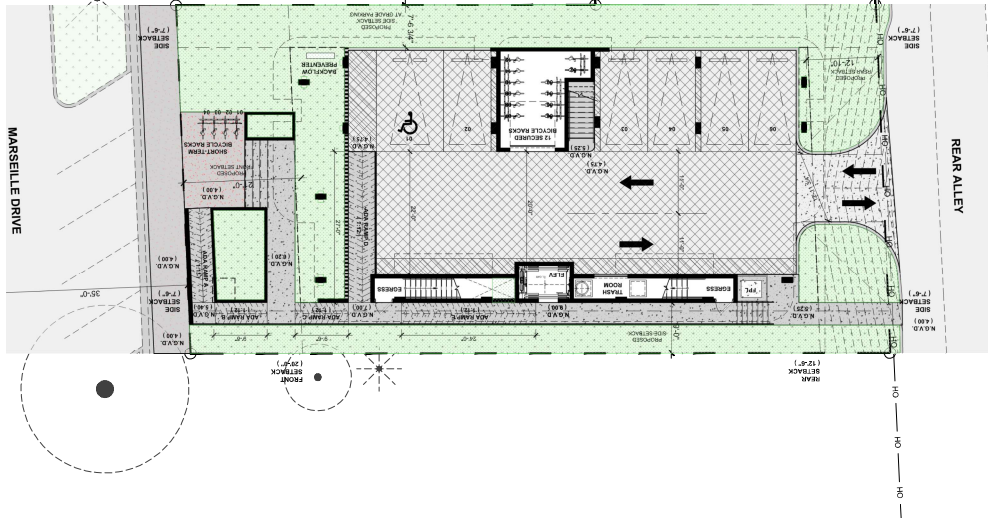
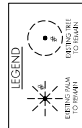
EXISTING TIRE DISPOSITION LIST			MISCELLANEOUS	
KEY	RECYCLING NAME	COMMON NAME	11. (1) POUNDS OF TIRE TREAD	RECYCLING FACILITY NAME
1	Automotive Tires			
2	Automotive Tires			
3	Automotive Tires			
4	Automotive Tires			
5	Automotive Tires			
6	Automotive Tires			
7	Automotive Tires			
8	Automotive Tires			
9	Automotive Tires			
10	Automotive Tires			
11	Automotive Tires			
12	Automotive Tires			
13	Automotive Tires			
14	Automotive Tires			
15	Automotive Tires			
16	Automotive Tires			
17	Automotive Tires			
18	Automotive Tires			
19	Automotive Tires			
20	Automotive Tires			
21	Automotive Tires			
22	Automotive Tires			
23	Automotive Tires			
24	Automotive Tires			
25	Automotive Tires			
26	Automotive Tires			
27	Automotive Tires			
28	Automotive Tires			
29	Automotive Tires			
30	Automotive Tires			
31	Automotive Tires			
32	Automotive Tires			
33	Automotive Tires			
34	Automotive Tires			
35	Automotive Tires			
36	Automotive Tires			
37	Automotive Tires			
38	Automotive Tires			
39	Automotive Tires			
40	Automotive Tires			
41	Automotive Tires			
42	Automotive Tires			
43	Automotive Tires			
44	Automotive Tires			
45	Automotive Tires			
46	Automotive Tires			
47	Automotive Tires			
48	Automotive Tires			
49	Automotive Tires			
50	Automotive Tires			
51	Automotive Tires			
52	Automotive Tires			
53	Automotive Tires			
54	Automotive Tires			
55	Automotive Tires			
56	Automotive Tires			
57	Automotive Tires			
58	Automotive Tires			
59	Automotive Tires			
60	Automotive Tires			
61	Automotive Tires			
62	Automotive Tires			
63	Automotive Tires			
64	Automotive Tires			
65	Automotive Tires			
66	Automotive Tires			
67	Automotive Tires			
68	Automotive Tires			
69	Automotive Tires			
70	Automotive Tires			
71	Automotive Tires			
72	Automotive Tires			
73	Automotive Tires			
74	Automotive Tires			
75	Automotive Tires			
76	Automotive Tires			
77	Automotive Tires			
78	Automotive Tires			
79	Automotive Tires			
80	Automotive Tires			
81	Automotive Tires			
82	Automotive Tires			
83	Automotive Tires			
84	Automotive Tires			
85	Automotive Tires			
86	Automotive Tires			
87	Automotive Tires			
88	Automotive Tires			
89	Automotive Tires			
90	Automotive Tires			
91	Automotive Tires			
92	Automotive Tires			
93	Automotive Tires			
94	Automotive Tires			
95	Automotive Tires			
96	Automotive Tires			
97	Automotive Tires			
98	Automotive Tires			
99	Automotive Tires			
100	Automotive Tires			



914 MARSEILLE DRIVE
 MIAMI BEACH, FL



LOC	1
TITLE	HARDSCAPE PLAN
ISSUED FOR	HRE24-0429
DATE	03.09.2025
BY	DESIGNED
CHECKED	LAZ.01



NOTE: ALL HARDSCAPE IS TO MEET SLIP RESISTANCE
 REQUIREMENTS. PAVERS & TRANSITIONS ARE TO BE
 FLUSH AND FREE FROM TRIP HAZARDS.

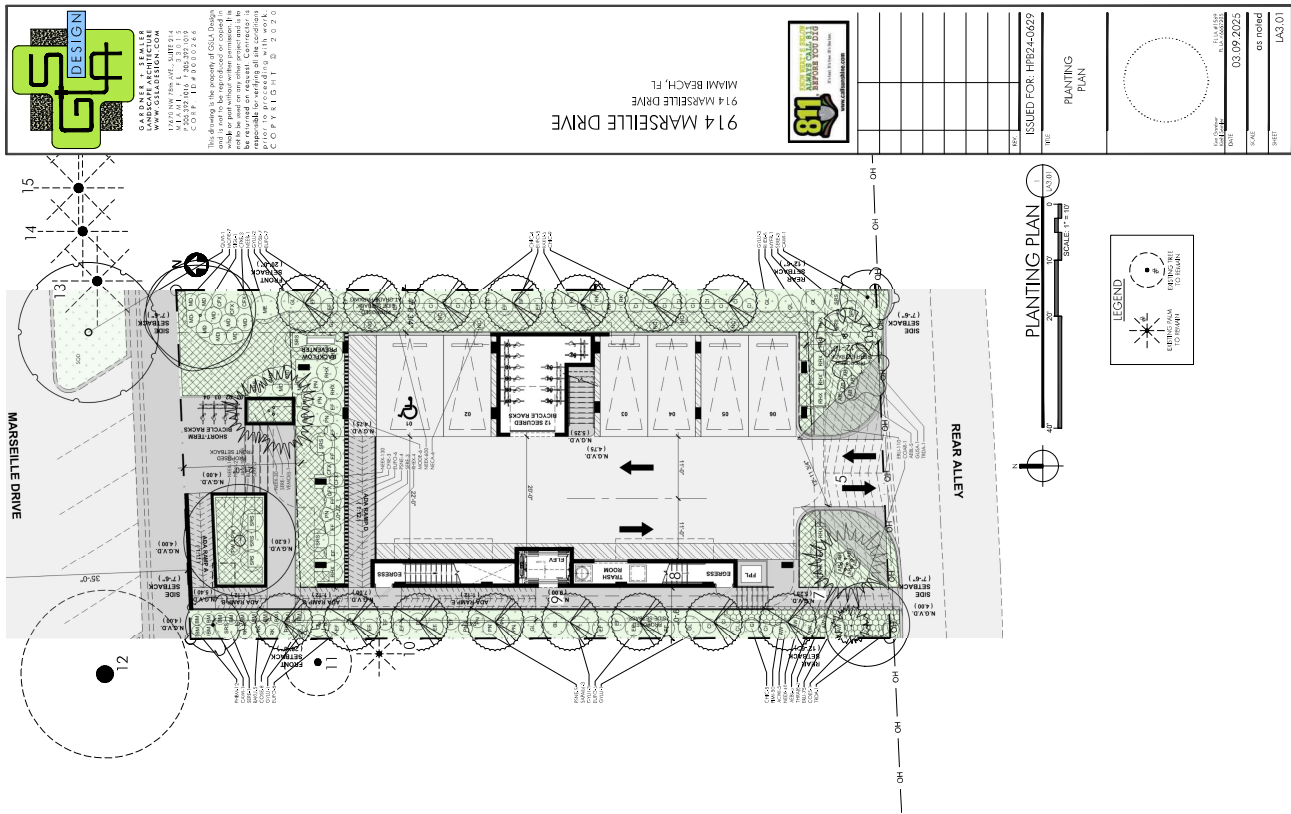
HARDSCAPE LEGEND

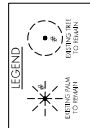
PAVERS

- 1. 12" x 24" RECTANGULAR PAVES (12'-0" x 24'-0")
- 2. 18" x 18" SQUARE PAVES (18'-0" x 18'-0")
- 3. 24" x 24" SQUARE PAVES (24'-0" x 24'-0")
- 4. 36" x 36" SQUARE PAVES (36'-0" x 36'-0")
- 5. 48" x 48" SQUARE PAVES (48'-0" x 48'-0")
- 6. 60" x 60" SQUARE PAVES (60'-0" x 60'-0")
- 7. 72" x 72" SQUARE PAVES (72'-0" x 72'-0")
- 8. 84" x 84" SQUARE PAVES (84'-0" x 84'-0")
- 9. 96" x 96" SQUARE PAVES (96'-0" x 96'-0")
- 10. 108" x 108" SQUARE PAVES (108'-0" x 108'-0")
- 11. 120" x 120" SQUARE PAVES (120'-0" x 120'-0")
- 12. 132" x 132" SQUARE PAVES (132'-0" x 132'-0")
- 13. 144" x 144" SQUARE PAVES (144'-0" x 144'-0")
- 14. 156" x 156" SQUARE PAVES (156'-0" x 156'-0")
- 15. 168" x 168" SQUARE PAVES (168'-0" x 168'-0")
- 16. 180" x 180" SQUARE PAVES (180'-0" x 180'-0")
- 17. 192" x 192" SQUARE PAVES (192'-0" x 192'-0")
- 18. 204" x 204" SQUARE PAVES (204'-0" x 204'-0")
- 19. 216" x 216" SQUARE PAVES (216'-0" x 216'-0")
- 20. 228" x 228" SQUARE PAVES (228'-0" x 228'-0")
- 21. 240" x 240" SQUARE PAVES (240'-0" x 240'-0")
- 22. 252" x 252" SQUARE PAVES (252'-0" x 252'-0")
- 23. 264" x 264" SQUARE PAVES (264'-0" x 264'-0")
- 24. 276" x 276" SQUARE PAVES (276'-0" x 276'-0")
- 25. 288" x 288" SQUARE PAVES (288'-0" x 288'-0")
- 26. 300" x 300" SQUARE PAVES (300'-0" x 300'-0")
- 27. 312" x 312" SQUARE PAVES (312'-0" x 312'-0")
- 28. 324" x 324" SQUARE PAVES (324'-0" x 324'-0")
- 29. 336" x 336" SQUARE PAVES (336'-0" x 336'-0")
- 30. 348" x 348" SQUARE PAVES (348'-0" x 348'-0")
- 31. 360" x 360" SQUARE PAVES (360'-0" x 360'-0")
- 32. 372" x 372" SQUARE PAVES (372'-0" x 372'-0")
- 33. 384" x 384" SQUARE PAVES (384'-0" x 384'-0")
- 34. 396" x 396" SQUARE PAVES (396'-0" x 396'-0")
- 35. 408" x 408" SQUARE PAVES (408'-0" x 408'-0")
- 36. 420" x 420" SQUARE PAVES (420'-0" x 420'-0")
- 37. 432" x 432" SQUARE PAVES (432'-0" x 432'-0")
- 38. 444" x 444" SQUARE PAVES (444'-0" x 444'-0")
- 39. 456" x 456" SQUARE PAVES (456'-0" x 456'-0")
- 40. 468" x 468" SQUARE PAVES (468'-0" x 468'-0")
- 41. 480" x 480" SQUARE PAVES (480'-0" x 480'-0")
- 42. 492" x 492" SQUARE PAVES (492'-0" x 492'-0")
- 43. 504" x 504" SQUARE PAVES (504'-0" x 504'-0")
- 44. 516" x 516" SQUARE PAVES (516'-0" x 516'-0")
- 45. 528" x 528" SQUARE PAVES (528'-0" x 528'-0")
- 46. 540" x 540" SQUARE PAVES (540'-0" x 540'-0")
- 47. 552" x 552" SQUARE PAVES (552'-0" x 552'-0")
- 48. 564" x 564" SQUARE PAVES (564'-0" x 564'-0")
- 49. 576" x 576" SQUARE PAVES (576'-0" x 576'-0")
- 50. 588" x 588" SQUARE PAVES (588'-0" x 588'-0")
- 51. 600" x 600" SQUARE PAVES (600'-0" x 600'-0")
- 52. 612" x 612" SQUARE PAVES (612'-0" x 612'-0")
- 53. 624" x 624" SQUARE PAVES (624'-0" x 624'-0")
- 54. 636" x 636" SQUARE PAVES (636'-0" x 636'-0")
- 55. 648" x 648" SQUARE PAVES (648'-0" x 648'-0")
- 56. 660" x 660" SQUARE PAVES (660'-0" x 660'-0")
- 57. 672" x 672" SQUARE PAVES (672'-0" x 672'-0")
- 58. 684" x 684" SQUARE PAVES (684'-0" x 684'-0")
- 59. 696" x 696" SQUARE PAVES (696'-0" x 696'-0")
- 60. 708" x 708" SQUARE PAVES (708'-0" x 708'-0")
- 61. 720" x 720" SQUARE PAVES (720'-0" x 720'-0")
- 62. 732" x 732" SQUARE PAVES (732'-0" x 732'-0")
- 63. 744" x 744" SQUARE PAVES (744'-0" x 744'-0")
- 64. 756" x 756" SQUARE PAVES (756'-0" x 756'-0")
- 65. 768" x 768" SQUARE PAVES (768'-0" x 768'-0")
- 66. 780" x 780" SQUARE PAVES (780'-0" x 780'-0")
- 67. 792" x 792" SQUARE PAVES (792'-0" x 792'-0")
- 68. 804" x 804" SQUARE PAVES (804'-0" x 804'-0")
- 69. 816" x 816" SQUARE PAVES (816'-0" x 816'-0")
- 70. 828" x 828" SQUARE PAVES (828'-0" x 828'-0")
- 71. 840" x 840" SQUARE PAVES (840'-0" x 840'-0")
- 72. 852" x 852" SQUARE PAVES (852'-0" x 852'-0")
- 73. 864" x 864" SQUARE PAVES (864'-0" x 864'-0")
- 74. 876" x 876" SQUARE PAVES (876'-0" x 876'-0")
- 75. 888" x 888" SQUARE PAVES (888'-0" x 888'-0")
- 76. 900" x 900" SQUARE PAVES (900'-0" x 900'-0")
- 77. 912" x 912" SQUARE PAVES (912'-0" x 912'-0")
- 78. 924" x 924" SQUARE PAVES (924'-0" x 924'-0")
- 79. 936" x 936" SQUARE PAVES (936'-0" x 936'-0")
- 80. 948" x 948" SQUARE PAVES (948'-0" x 948'-0")
- 81. 960" x 960" SQUARE PAVES (960'-0" x 960'-0")
- 82. 972" x 972" SQUARE PAVES (972'-0" x 972'-0")
- 83. 984" x 984" SQUARE PAVES (984'-0" x 984'-0")
- 84. 996" x 996" SQUARE PAVES (996'-0" x 996'-0")
- 85. 1008" x 1008" SQUARE PAVES (1008'-0" x 1008'-0")
- 86. 1020" x 1020" SQUARE PAVES (1020'-0" x 1020'-0")
- 87. 1032" x 1032" SQUARE PAVES (1032'-0" x 1032'-0")
- 88. 1044" x 1044" SQUARE PAVES (1044'-0" x 1044'-0")
- 89. 1056" x 1056" SQUARE PAVES (1056'-0" x 1056'-0")
- 90. 1068" x 1068" SQUARE PAVES (1068'-0" x 1068'-0")
- 91. 1080" x 1080" SQUARE PAVES (1080'-0" x 1080'-0")
- 92. 1092" x 1092" SQUARE PAVES (1092'-0" x 1092'-0")
- 93. 1104" x 1104" SQUARE PAVES (1104'-0" x 1104'-0")
- 94. 1116" x 1116" SQUARE PAVES (1116'-0" x 1116'-0")
- 95. 1128" x 1128" SQUARE PAVES (1128'-0" x 1128'-0")
- 96. 1140" x 1140" SQUARE PAVES (1140'-0" x 1140'-0")
- 97. 1152" x 1152" SQUARE PAVES (1152'-0" x 1152'-0")
- 98. 1164" x 1164" SQUARE PAVES (1164'-0" x 1164'-0")
- 99. 1176" x 1176" SQUARE PAVES (1176'-0" x 1176'-0")
- 100. 1188" x 1188" SQUARE PAVES (1188'-0" x 1188'-0")
- 101. 1200" x 1200" SQUARE PAVES (1200'-0" x 1200'-0")
- 102. 1212" x 1212" SQUARE PAVES (1212'-0" x 1212'-0")
- 103. 1224" x 1224" SQUARE PAVES (1224'-0" x 1224'-0")
- 104. 1236" x 1236" SQUARE PAVES (1236'-0" x 1236'-0")
- 105. 1248" x 1248" SQUARE PAVES (1248'-0" x 1248'-0")
- 106. 1260" x 1260" SQUARE PAVES (1260'-0" x 1260'-0")
- 107. 1272" x 1272" SQUARE PAVES (1272'-0" x 1272'-0")
- 108. 1284" x 1284" SQUARE PAVES (1284'-0" x 1284'-0")
- 109. 1296" x 1296" SQUARE PAVES (1296'-0" x 1296'-0")
- 110. 1308" x 1308" SQUARE PAVES (1308'-0" x 1308'-0")
- 111. 1320" x 1320" SQUARE PAVES (1320'-0" x 1320'-0")
- 112. 1332" x 1332" SQUARE PAVES (1332'-0" x 1332'-0")
- 113. 1344" x 1344" SQUARE PAVES (1344'-0" x 1344'-0")
- 114. 1356" x 1356" SQUARE PAVES (1356'-0" x 1356'-0")
- 115. 1368" x 1368" SQUARE PAVES (1368'-0" x 1368'-0")
- 116. 1380" x 1380" SQUARE PAVES (1380'-0" x 1380'-0")
- 117. 1392" x 1392" SQUARE PAVES (1392'-0" x 1392'-0")
- 118. 1404" x 1404" SQUARE PAVES (1404'-0" x 1404'-0")
- 119. 1416" x 1416" SQUARE PAVES (1416'-0" x 1416'-0")
- 120. 1428" x 1428" SQUARE PAVES (1428'-0" x 1428'-0")
- 121. 1440" x 1440" SQUARE PAVES (1440'-0" x 1440'-0")
- 122. 1452" x 1452" SQUARE PAVES (1452'-0" x 1452'-0")
- 123. 1464" x 1464" SQUARE PAVES (1464'-0" x 1464'-0")
- 124. 1476" x 1476" SQUARE PAVES (1476'-0" x 1476'-0")
- 125. 1488" x 1488" SQUARE PAVES (1488'-0" x 1488'-0")
- 126. 1500" x 1500" SQUARE PAVES (1500'-0" x 1500'-0")
- 127. 1512" x 1512" SQUARE PAVES (1512'-0" x 1512'-0")
- 128. 1524" x 1524" SQUARE PAVES (1524'-0" x 1524'-0")
- 129. 1536" x 1536" SQUARE PAVES (1536'-0" x 1536'-0")
- 130. 1548" x 1548" SQUARE PAVES (1548'-0" x 1548'-0")
- 131. 1560" x 1560" SQUARE PAVES (1560'-0" x 1560'-0")
- 132. 1572" x 1572" SQUARE PAVES (1572'-0" x 1572'-0")
- 133. 1584" x 1584" SQUARE PAVES (1584'-0" x 1584'-0")
- 134. 1596" x 1596" SQUARE PAVES (1596'-0" x 1596'-0")
- 135. 1608" x 1608" SQUARE PAVES (1608'-0" x 1608'-0")
- 136. 1620" x 1620" SQUARE PAVES (1620'-0" x 1620'-0")
- 137. 1632" x 1632" SQUARE PAVES (1632'-0" x 1632'-0")
- 138. 1644" x 1644" SQUARE PAVES (1644'-0" x 1644'-0")
- 139. 1656" x 1656" SQUARE PAVES (1656'-0" x 1656'-0")
- 140. 1668" x 1668" SQUARE PAVES (1668'-0" x 1668'-0")
- 141. 1680" x 1680" SQUARE PAVES (1680'-0" x 1680'-0")
- 142. 1692" x 1692" SQUARE PAVES (1692'-0" x 1692'-0")
- 143. 1704" x 1704" SQUARE PAVES (1704'-0" x 1704'-0")
- 144. 1716" x 1716" SQUARE PAVES (1716'-0" x 1716'-0")
- 145. 1728" x 1728" SQUARE PAVES (1728'-0" x 1728'-0")
- 146. 1740" x 1740" SQUARE PAVES (1740'-0" x 1740'-0")
- 147. 1752" x 1752" SQUARE PAVES (1752'-0" x 1752'-0")
- 148. 1764" x 1764" SQUARE PAVES (1764'-0" x 1764'-0")
- 149. 1776" x 1776" SQUARE PAVES (1776'-0" x 1776'-0")
- 150. 1788" x 1788" SQUARE PAVES (1788'-0" x 1788'-0")
- 151. 1800" x 1800" SQUARE PAVES (1800'-0" x 1800'-0")
- 152. 1812" x 1812" SQUARE PAVES (1812'-0" x 1812'-0")
- 153. 1824" x 1824" SQUARE PAVES (1824'-0" x 1824'-0")
- 154. 1836" x 1836" SQUARE PAVES (1836'-0" x 1836'-0")
- 155. 1848" x 1848" SQUARE PAVES (1848'-0" x 1848'-0")
- 156. 1860" x 1860" SQUARE PAVES (1860'-0" x 1860'-0")
- 157. 1872" x 1872" SQUARE PAVES (1872'-0" x 1872'-0")
- 158. 1884" x 1884" SQUARE PAVES (1884'-0" x 1884'-0")
- 159. 1896" x 1896" SQUARE PAVES (1896'-0" x 1896'-0")
- 160. 1908" x 1908" SQUARE PAVES (1908'-0" x 1908'-0")
- 161. 1920" x 1920" SQUARE PAVES (1920'-0" x 1920'-0")
- 162. 1932" x 1932" SQUARE PAVES (1932'-0" x 1932'-0")
- 163. 1944" x 1944" SQUARE PAVES (1944'-0" x 1944'-0")
- 164. 1956" x 1956" SQUARE PAVES (1956'-0" x 1956'-0")
- 165. 1968" x 1968" SQUARE PAVES (1968'-0" x 1968'-0")
- 166. 1980" x 1980" SQUARE PAVES (1980'-0" x 1980'-0")
- 167. 1992" x 1992" SQUARE PAVES (1992'-0" x 1992'-0")
- 168. 2004" x 2004" SQUARE PAVES (2004'-0" x 2004'-0")
- 169. 2016" x 2016" SQUARE PAVES (2016'-0" x 2016'-0")
- 170. 2028" x 2028" SQUARE PAVES (2028'-0" x 2028'-0")
- 171. 2040" x 2040" SQUARE PAVES (2040'-0" x 2040'-0")
- 172. 2052" x 2052" SQUARE PAVES (2052'-0" x 2052'-0")
- 173. 2064" x 2064" SQUARE PAVES (2064'-0" x 2064'-0")
- 174. 2076" x 2076" SQUARE PAVES (2076'-0" x 2076'-0")
- 175. 2088" x 2088" SQUARE PAVES (2088'-0" x 2088'-0")
- 176. 2100" x 2100" SQUARE PAVES (2100'-0" x 2100'-0")
- 177. 2112" x 2112" SQUARE PAVES (2112'-0" x 2112'-0")
- 178. 2124" x 2124" SQUARE PAVES (2124'-0" x 2124'-0")
- 179. 2136" x 2136" SQUARE PAVES (2136'-0" x 2136'-0")
- 180. 2148" x 2148" SQUARE PAVES (2148'-0" x 2148'-0")
- 181. 2160" x 2160" SQUARE PAVES (2160'-0" x 2160'-0")
- 182. 2172" x 2172" SQUARE PAVES (2172'-0" x 2172'-0")
- 183. 2184" x 2184" SQUARE PAVES (2184'-0" x 2184'-0")
- 184. 2196" x 2196" SQUARE PAVES (2196'-0" x 2196'-0")
- 185. 2208" x 2208" SQUARE PAVES (2208'-0" x 2208'-0")
- 186. 2220" x 2220" SQUARE PAVES (2220'-0" x 2220'-0")
- 187. 2232" x 2232" SQUARE PAVES (2232'-0" x 2232'-0")
- 188. 2244" x 2244" SQUARE PAVES (2244'-0" x 2244'-0")
- 189. 2256" x 2256" SQUARE PAVES (2256'-0" x 2256'-0")
- 190. 2268" x 2268" SQUARE PAVES (2268'-0" x 2268'-0")
- 191. 2280" x 2280" SQUARE PAVES (2280'-0" x 2280'-0")
- 192. 2292" x 2292" SQUARE PAVES (2292'-0" x 2292'-0")
- 193. 2304" x 2304" SQUARE PAVES (2304'-0" x 2304'-0")
- 194. 2316" x 2316" SQUARE PAVES (2316'-0" x 2316'-0")
- 195. 2328" x 2328" SQUARE PAVES (2328'-0" x 2328'-0")
- 196. 2340" x 2340" SQUARE PAVES (2340'-0" x 2340'-0")
- 197. 2352" x 2352" SQUARE PAVES (2352'-0" x 2352'-0")
- 198. 2364" x 2364" SQUARE PAVES (2364'-0" x 2364'-0")
- 199. 2376" x 2376" SQUARE PAVES (2376'-0" x 2376'-0")
- 200. 2388" x 2388" SQUARE PAVES (2388'-0" x 2388'-0")
- 201. 2400" x 2400" SQUARE PAVES (2400'-0" x 2400'-0")
- 202. 2412" x 2412" SQUARE PAVES (2412'-0" x 2412'-0")
- 203. 2424" x 2424" SQUARE PAVES (2424'-0" x 2424'-0")
- 204. 2436" x 2436" SQUARE PAVES (2436'-0" x 2436'-0")
- 205. 2448" x 2448" SQUARE PAVES (2448'-0" x 2448'-0")
- 206. 2460" x 2460" SQUARE PAVES (2460'-0" x 2460'-0")
- 207. 2472" x 2472" SQUARE PAVES (2472'-0" x 2472'-0")
- 208. 2484" x 2484" SQUARE PAVES (2484'-0" x 2484'-0")
- 209. 2496" x 2496" SQUARE PAVES (2496'-0" x 2496'-0")
- 210. 2508" x 2508" SQUARE PAVES (2508'-0" x 2508'-0")
- 211. 2520" x 2520" SQUARE PAVES (2520'-0" x 2520'-0")
- 212. 2532" x 2532" SQUARE PAVES (2532'-0" x 2532'-0")
- 213. 2544" x 2544" SQUARE PAVES (2544'-0" x 2544'-0")
- 214. 2556" x 2556" SQUARE PAVES (2556'-0" x 2556'-0")
- 215. 2568" x 2568" SQUARE PAVES (2568'-0" x 2568'-0")
- 216. 2580" x 2580" SQUARE PAVES (2580'-0" x 2580'-0")
- 217. 2592" x 2592" SQUARE PAVES (2592'-0" x 2592'-0")
- 218. 2604" x 2604" SQUARE PAVES (2604'-0" x 2604'-0")
- 219. 2616" x 2616" SQUARE PAVES (2616'-0" x 2616'-0")
- 220. 2628" x 2628" SQUARE PAVES (2628'-0" x 2628'-0")
- 221. 2640" x 2640" SQUARE PAVES (2640'-0" x 2640'-0")
- 222. 2652" x 2652" SQUARE PAVES (2652'-0" x 2652'-0")
- 223. 2664" x 2664" SQUARE PAVES (2664'-0" x 2664'-0")
- 224. 2676" x 2676" SQUARE PAVES (2676'-0" x 2676'-0")
- 225. 2688" x 2688" SQUARE PAVES (2688'-0" x 2688'-0")
- 226. 2700" x 2700" SQUARE PAVES (2700'-0" x 2700'-0")
- 227. 2712" x 2712" SQUARE PAVES (2712'-0" x 2712'-0")
- 228. 2724" x 2724" SQUARE PAVES (2724'-0" x 2724'-0")
- 229. 2736" x 2736" SQUARE PAVES (2736'-0" x 2736'-0")
- 230. 2748" x 2748" SQUARE PAVES (2748'-0" x 2748'-0")
- 231. 2760" x 2760" SQUARE PAVES (2760'-0" x 2760'-0")
- 232. 2772" x 2772" SQUARE PAVES (2772'-0" x 2772'-0")
- 233. 2784" x 2784" SQUARE PAVES (2784'-0" x 2784'-0")
- 234. 2796" x 2796" SQUARE PAVES (2796'-0" x 2796'-0")
- 235. 2808" x 2808" SQUARE PAVES (2808'-0" x 2808'-0")
- 236. 2820" x 2820" SQUARE PAVES (2820'-0" x 2820'-0")
- 237. 2832" x 2832" SQUARE PAVES (2832'-0" x 2832'-0")
- 238. 2844" x 2844" SQUARE PAVES (2844'-0" x 2844'-0")
- 239. 2856" x 2856" SQUARE PAVES (2856'-0" x 2856'-0")
- 240. 2868" x 2868" SQUARE PAVES (2868'-0" x 2868'-0")
- 241. 2880" x 2880" SQUARE PAVES (2880'-0" x 2880'-0")
- 242. 2892" x 2892" SQUARE PAVES (2892'-0" x 2892'-0")
- 243. 2904" x 2904" SQUARE PAVES (2904'-0" x 2904'-0")
- 244. 2916" x 2916" SQUARE PAVES (2916'-0" x 2916'-0")
- 245. 2928" x 2928" SQUARE PAVES (2928'-0" x 2928'-0")
- 246. 2940" x 2940" SQUARE PAVES (2940'-0" x 2940'-0")
- 247. 2952" x 2952" SQUARE PAVES (2952'-0" x 2952'-0")
- 248. 2964" x 2964" SQUARE PAVES (2964'-0" x 2964'-0")
- 249. 2976" x 2976" SQUARE PAVES (2976'-0" x 2976'-0")
- 250. 2988" x 2988" SQUARE PAVES (2988'-0" x 2988'-0")
- 251. 3000" x 3000" SQUARE PAVES (3000'-0" x 3000'-0")
- 252. 3012" x 3012" SQUARE PAVES (3012'-0" x 3012'-0")
- 253. 3024" x 3024" SQUARE PAVES (3024'-0" x 3024'-0")
- 254. 3036" x 3036" SQUARE PAVES (3036'-0" x 3036'-0")
- 255. 3048" x 3048" SQUARE PAVES (3048'-0" x 3048'-0")
- 256. 3060" x 3060" SQUARE PAVES (3060'-0" x 3060'-0")
- 257. 3072" x 3072" SQUARE PAVES (3072'-0" x 3072'-0")
- 258. 3084" x 3084" SQUARE PAVES (3084'-0" x 3084'-0")
- 259. 3096" x 3096" SQUARE PAVES (3096'-0" x 3096'-0")
- 260. 3108" x 3108" SQUARE PAVES (3108'-0" x 3108'-0")
- 261. 3120" x 3120" SQUARE PAVES (3120'-0" x 3120'-0")
- 262. 3132" x 3132" SQUARE PAVES (3132'-0" x 3132'-0")
- 263. 3144" x 3144" SQUARE PAVES (3144'-0" x 3144'-0")
- 264. 3156" x 3156" SQUARE PAVES (3156'-0" x 3156'-0")
- 265. 3168" x 3168" SQUARE PAVES (3168'-0" x 3168'-0")
- 266. 3180" x 3180" SQUARE PAVES (3180'-0" x 3180'-0")
- 267. 3192" x 3192" SQUARE PAVES (3192'-0" x 3192'-0")
- 268. 3204" x 3204" SQUARE PAVES (3204'-0" x 3204'-0")
- 269. 3216" x 3216" SQUARE PAVES (3216'-0" x 3216'-0")
- 270. 3228" x 3228" SQUARE PAVES (3228'-0" x 3228'-0")
- 271. 3240" x 3240" SQUARE PAVES (3240'-0" x 3240'-0")
- 272. 3252" x 3252" SQUARE PAVES (3252'-0" x 3252

[illegible]

CITY OF MIAMI BEACH		PERMANENTLY AFFIRMED TO PLANS	
LANDSCAPE LEGEND		REQUIRED/ ALLOWED	PROVIDED
Zoning District: MDC-1 Lot Area: 7,770 Acres: 0.37			
OPEN SPACE			
A Square feet of Required Open Space as indicated on site plan:		1,554	10,059
B Square feet of parking lot open space required as indicated on site plan:		0	0
C Number of parking spaces (300 \pm parking space):		1,554	1,900
D Total square feet of landscaped open space required A+B-C:		1,554	1,900
LAWN AREA CALCULATION			
A Square feet of landscaped open space required		1,554	1,900
B Maximum lawn area (total permitted: 30% x 1900 \pm):		970	0
TREES			
Number of trees required per lot or lot less, less existing			
A Trees to be planted (minimum requirement):		1	20
B Trees to be planted (trees - number of existing trees):		2	20
C Low maintenance / straight and tall tolerant required:		3	3
D Number of trees provided a 5000' (minimum of 20' x 20')		3	4
E Total trees provided (total trees divided by 20):		3	3
F Street trees species allowed directly between power lines:		0	0
G Maximum average spacing of 30' or less:			
H Number of trees along street divided by 20:			
SHRUBS			
A Number of shrubs req. Sum of lot and street trees required x 12:		96	140
B Number of shrubs req. Number of trees provided x 50%:		80	90
PAVE SHIMULOR SMALL TREES			
A Number of trees provided (total trees required - Number of trees x 50%):		10	10
B Number of trees provided (total trees required - Number of trees x 50%):		10	10




















LEGEND

REFUGIUM

REFUGIUM

REFUGIUM

[illegible]

IRRIGATION MATERIALS LIST			
ITEM KEY	DESCRIPTION	QTY.	as required
_____	1/2" black shall be Class 200 PVC (as shown on sheet)		as required
_____	MAN shall be Class 200 PVC		as required
=====	PVC leavers shall be Class 200 PVC (stated double the width of the pipe within installed where pipe runs under roadbed)		as required
=====	Flexible PVC or Polyprop for wing (joints)		as required
	Water Meter and Backflow Prevention Assembly (See Cat. Item)	1	
	Electric Controller RAINBIRD ESP-M Series Controller	2	
	Rainbird RSD Series Rain Sensor (locate in area of free rainfall)	2	
_____	Irrigation Control Wire	as required	
	Rainbird 1" In-line Pressure Regulator (for 1/2" MGD-1000 (1/2" to zone not to exceed 40psi max))	as required	
_____	RAINBIRD W-1000 (1/2" to zone not to exceed 40psi max)	as required	
	RAINBIRD W-1000 (1/2" to zone not to exceed 40psi max)	as required	
	RAINBIRD W-1000 (1/2" to zone not to exceed 40psi max)	as required	
	RAINBIRD W-1000 (1/2" to zone not to exceed 40psi max)	as required	
	RAINBIRD W-1000 (1/2" to zone not to exceed 40psi max)	as required	
	RAINBIRD W-1000 (1/2" to zone not to exceed 40psi max)	as required	
	RAINBIRD W-1000 (1/2" to zone not to exceed 40psi max)	as required	
	RAINBIRD W-1000 (1/2" to zone not to exceed 40psi max)	as required	
	RAINBIRD W-1000 (1/2" to zone not to exceed 40psi max)	as required	
	RAINBIRD W-1000 (1/2" to zone not to exceed 40psi max)	as required	
	RAINBIRD W-1000 (1/2" to zone not to exceed 40psi max)	as required	
	RAINBIRD W-1000 (1/2" to zone not to exceed 40psi max)	as required	
	RAINBIRD W-1000 (1/2" to zone not to exceed 40psi max)	as required	
	RAINBIRD W-1000 (1/2" to zone not to exceed 40psi max)	as required	
	RAINBIRD W-1000 (1/2" to zone not to exceed 40psi max)	as required	
	RAINBIRD W-1000 (1/2" to zone not to exceed 40psi max)	as required	
	RAINBIRD W-1000 (1/2" to zone not to exceed 40psi max)	as required	
	RAINBIRD W-1000 (1/2" to zone not to exceed 40psi max)	as required	
	RAINBIRD W-1000 (1/2" to zone not to exceed 40psi max)	as required	
	RAINBIRD W-1000 (1/2" to zone not to exceed 40psi max)	as required	
	RAINBIRD W-1000 (1/2" to zone not to exceed 40psi max)	as required	
	RAINBIRD W-1000 (1/2" to zone not to exceed 40psi max)	as required	
	RAINBIRD W-1000 (1/2" to zone not to exceed 40psi max)	as required	
	RAINBIRD W-1000 (1/2" to zone not to exceed 40psi max)	as required	
	RAINBIRD W-1000 (1/2" to zone not to exceed 40psi max)	as required	
	RAINBIRD W-1000 (1/2" to zone not to exceed 40psi max)	as required	
	RAINBIRD W-1000 (1/2" to zone not to exceed 40psi max)	as required	
	RAINBIRD W-1000 (1/2" to zone not to exceed 40psi max)	as required	
	RAINBIRD W-1000 (1/2" to zone not to exceed 40psi max)	as required	
	RAINBIRD W-1000 (1/2" to zone not to exceed 40psi max)	as required	
	RAINBIRD W-1000 (1/2" to zone not to exceed 40psi max)	as required	
	RAINBIRD W-1000 (1/2" to zone not to exceed 40psi max)	as required	
	RAINBIRD W-1000 (1/2" to zone not to exceed 40psi max)	as required	
	RAINBIRD W-1000 (1/2" to zone not to exceed 40psi max)	as required	
	RAINBIRD W-1000 (1/2" to zone not to exceed 40psi max)	as required	
	RAINBIRD W-1000 (1/2" to zone not to exceed 40psi max)	as required	
	RAINBIRD W-1000 (1/2" to zone not to exceed 40psi max)	as required	
	RAINBIRD W-1000 (1/2" to zone not to exceed 40psi max)	as required	
	RAINBIRD W-1000 (1/2" to zone not to exceed 40psi max)	as required	
	RAINBIRD W-1000 (1/2" to zone not to exceed 40psi max)	as required	
	RAINBIRD W-1000 (1/2" to zone not to exceed 40psi max)	as required	
	RAINBIRD W-1000 (1/2" to zone not to exceed 40psi max)	as required	
	RAINBIRD W-1000 (1/2" to zone not to exceed 40psi max)	as required	
	RAINBIRD W-1000 (1/2" to zone not to exceed 40psi max)	as required	
	RAINBIRD W-1000 (1/2" to zone not to exceed 40psi max)	as required	
	RAINBIRD W-1000 (1/2" to zone not to exceed 40psi max)	as required	
	RAINBIRD W-1000 (1/2" to zone not to exceed 40psi max)	as required	
	RAINBIRD W-1000 (1/2" to zone not to exceed 40psi max)	as required	
	RAINBIRD W-1000 (1/2" to zone not to exceed 40psi max)	as required	
	RAINBIRD W-1000 (1/2" to zone not to exceed 40psi max)	as required	
	RAINBIRD W-1000 (1/2" to zone not to exceed 40psi max)	as required	
	RAINBIRD W-1000 (1/2" to zone not to exceed 40psi max)	as required	
	RAINBIRD W-1000 (1/2" to zone not to exceed 40psi max)	as required	
	RAINBIRD W-1000 (1/2" to zone not to exceed 40psi max)	as required	
	RAINBIRD W-1000 (1/2" to zone not to exceed 40psi max)	as required	
	RAINBIRD W-1000 (1/2" to zone not to exceed 40psi max)	as required	
	RAINBIRD W-1000 (1/2" to zone not to exceed 40psi max)	as required	
	RAINBIRD W-1000 (1/2" to zone not to exceed 40psi max)	as required	
	RAINBIRD W-1000 (1/2" to zone not to exceed 40psi max)	as required	
	RAINBIRD W-1000 (1/2" to zone not to exceed 40psi max)	as required	
	RAINBIRD W-1000 (1/2" to zone not to exceed 40psi max)	as required	
	RAINBIRD W-1000 (1/2" to zone not to exceed 40psi max)	as required	

NOTE: IRRIGATION PIPING IS DRAWN SCHEMATICALLY. LOCATE PIPING IN INTERSTITIAL SPACE. RUN PIPING THROUGH SLEEVES INTO PLANTERS AS REQUIRED. KEEP PIPING IN PLANTERS AGAINST PLANTER WALLS AND/OR FLOORS. LOCATION OF ALL SLEEVES SHALL BE VERIFIED BY THE MEP.

[illegible]

1. RISER CAP
2. RISER BODY
3. RISER BASE
4. RISER CAP GASKET
5. RISER BODY GASKET
6. RISER BASE GASKET
7. RISER CAP NUT
8. RISER BODY NUT
9. RISER BASE NUT
10. RISER CAP WASHER

NOTE: 1. RISER CAP NUT, RISER BODY NUT, AND RISER BASE NUT ARE SUPPLIED WITH THE RISER CAP, RISER BODY, AND RISER BASE RESPECTIVELY.
2. RISER CAP GASKET, RISER BODY GASKET, AND RISER BASE GASKET ARE SUPPLIED WITH THE RISER CAP, RISER BODY, AND RISER BASE RESPECTIVELY.
3. RISER CAP WASHER, RISER BODY WASHER, AND RISER BASE WASHER ARE SUPPLIED WITH THE RISER CAP, RISER BODY, AND RISER BASE RESPECTIVELY.

XFS SUBSURFACE DRIFTLINE RISER ASSEMBLY

10-1

1. RISER CAP
2. RISER BODY
3. RISER BASE
4. RISER CAP GASKET
5. RISER BODY GASKET
6. RISER BASE GASKET
7. RISER CAP NUT
8. RISER BODY NUT
9. RISER BASE NUT
10. RISER CAP WASHER

NOTE: 1. RISER CAP NUT, RISER BODY NUT, AND RISER BASE NUT ARE SUPPLIED WITH THE RISER CAP, RISER BODY, AND RISER BASE RESPECTIVELY.
2. RISER CAP GASKET, RISER BODY GASKET, AND RISER BASE GASKET ARE SUPPLIED WITH THE RISER CAP, RISER BODY, AND RISER BASE RESPECTIVELY.
3. RISER CAP WASHER, RISER BODY WASHER, AND RISER BASE WASHER ARE SUPPLIED WITH THE RISER CAP, RISER BODY, AND RISER BASE RESPECTIVELY.

XFS SUBSURFACE DRIFTLINE OPERATION INDICATOR

10-2

GARDNER & SEALE
 11415 NW 36th Ave., Suite 214
 Portland, OR 97222
 503.339.0411 • 503.283.0199
 WWW.G5DESIGN.COM

THIS IS A PRELIMINARY DESIGN. ALL DIMENSIONS AND MATERIALS ARE SUBJECT TO CHANGE WITHOUT NOTICE. THE USER SHALL BE RESPONSIBLE FOR OBTAINING ALL NECESSARY PERMITS AND APPROVALS. THE USER SHALL BE RESPONSIBLE FOR OBTAINING ALL NECESSARY PERMITS AND APPROVALS. THE USER SHALL BE RESPONSIBLE FOR OBTAINING ALL NECESSARY PERMITS AND APPROVALS.

PERMITS AND APPROVALS
 THE USER SHALL BE RESPONSIBLE FOR OBTAINING ALL NECESSARY PERMITS AND APPROVALS. THE USER SHALL BE RESPONSIBLE FOR OBTAINING ALL NECESSARY PERMITS AND APPROVALS. THE USER SHALL BE RESPONSIBLE FOR OBTAINING ALL NECESSARY PERMITS AND APPROVALS.

- ① CONSTRUCTION OF THE SUBSURFACE DIAPHRAGM SHALL BE IN ACCORDANCE WITH THE FOLLOWING REQUIREMENTS:
- ② THE SUBSURFACE DIAPHRAGM SHALL BE CONSTRUCTED OF 12" MINIMUM THICKNESS 4000 PSI CONCRETE.
- ③ THE SUBSURFACE DIAPHRAGM SHALL BE REINFORCED WITH #4 BARS AT 18" ON CENTER.
- ④ THE SUBSURFACE DIAPHRAGM SHALL BE FINISHED WITH A 1" MINIMUM THICKNESS 4000 PSI CONCRETE SLAB.
- ⑤ THE SUBSURFACE DIAPHRAGM SHALL BE FINISHED WITH A 1" MINIMUM THICKNESS 4000 PSI CONCRETE SLAB.
- ⑥ THE SUBSURFACE DIAPHRAGM SHALL BE FINISHED WITH A 1" MINIMUM THICKNESS 4000 PSI CONCRETE SLAB.
- ⑦ THE SUBSURFACE DIAPHRAGM SHALL BE FINISHED WITH A 1" MINIMUM THICKNESS 4000 PSI CONCRETE SLAB.
- ⑧ THE SUBSURFACE DIAPHRAGM SHALL BE FINISHED WITH A 1" MINIMUM THICKNESS 4000 PSI CONCRETE SLAB.
- ⑨ THE SUBSURFACE DIAPHRAGM SHALL BE FINISHED WITH A 1" MINIMUM THICKNESS 4000 PSI CONCRETE SLAB.
- ⑩ THE SUBSURFACE DIAPHRAGM SHALL BE FINISHED WITH A 1" MINIMUM THICKNESS 4000 PSI CONCRETE SLAB.

XFS SYSTEM MAXIMUM LENGTHS OF WALL			
WALL TYPE	MAXIMUM LENGTH (FEET)	MAXIMUM LENGTH (METERS)	MAXIMUM LENGTH (FEET)
1. PRECAST CONCRETE WALL	120	36.6	120
2. CAST-IN-PLACE CONCRETE WALL	120	36.6	120
3. PRECAST CONCRETE WALL WITH REINFORCEMENT	120	36.6	120
4. CAST-IN-PLACE CONCRETE WALL WITH REINFORCEMENT	120	36.6	120
5. PRECAST CONCRETE WALL WITH REINFORCEMENT AND ANCHORS	120	36.6	120
6. CAST-IN-PLACE CONCRETE WALL WITH REINFORCEMENT AND ANCHORS	120	36.6	120
7. PRECAST CONCRETE WALL WITH REINFORCEMENT AND ANCHORS AND ANCHORS	120	36.6	120
8. CAST-IN-PLACE CONCRETE WALL WITH REINFORCEMENT AND ANCHORS AND ANCHORS	120	36.6	120
9. PRECAST CONCRETE WALL WITH REINFORCEMENT AND ANCHORS AND ANCHORS AND ANCHORS	120	36.6	120
10. CAST-IN-PLACE CONCRETE WALL WITH REINFORCEMENT AND ANCHORS AND ANCHORS AND ANCHORS	120	36.6	120

XFS SUBSURFACE DIAPHRAGM CENTERFEED LAYOUT

NOTES:

1. THE SUBSURFACE DIAPHRAGM SHALL BE CONSTRUCTED OF 12" MINIMUM THICKNESS 4000 PSI CONCRETE.
2. THE SUBSURFACE DIAPHRAGM SHALL BE REINFORCED WITH #4 BARS AT 18" ON CENTER.
3. THE SUBSURFACE DIAPHRAGM SHALL BE FINISHED WITH A 1" MINIMUM THICKNESS 4000 PSI CONCRETE SLAB.
4. THE SUBSURFACE DIAPHRAGM SHALL BE FINISHED WITH A 1" MINIMUM THICKNESS 4000 PSI CONCRETE SLAB.
5. THE SUBSURFACE DIAPHRAGM SHALL BE FINISHED WITH A 1" MINIMUM THICKNESS 4000 PSI CONCRETE SLAB.
6. THE SUBSURFACE DIAPHRAGM SHALL BE FINISHED WITH A 1" MINIMUM THICKNESS 4000 PSI CONCRETE SLAB.
7. THE SUBSURFACE DIAPHRAGM SHALL BE FINISHED WITH A 1" MINIMUM THICKNESS 4000 PSI CONCRETE SLAB.
8. THE SUBSURFACE DIAPHRAGM SHALL BE FINISHED WITH A 1" MINIMUM THICKNESS 4000 PSI CONCRETE SLAB.
9. THE SUBSURFACE DIAPHRAGM SHALL BE FINISHED WITH A 1" MINIMUM THICKNESS 4000 PSI CONCRETE SLAB.
10. THE SUBSURFACE DIAPHRAGM SHALL BE FINISHED WITH A 1" MINIMUM THICKNESS 4000 PSI CONCRETE SLAB.

- ① PRECAST CONCRETE WALL
- ② CAST-IN-PLACE CONCRETE WALL
- ③ PRECAST CONCRETE WALL WITH REINFORCEMENT
- ④ CAST-IN-PLACE CONCRETE WALL WITH REINFORCEMENT
- ⑤ PRECAST CONCRETE WALL WITH REINFORCEMENT AND ANCHORS
- ⑥ CAST-IN-PLACE CONCRETE WALL WITH REINFORCEMENT AND ANCHORS
- ⑦ PRECAST CONCRETE WALL WITH REINFORCEMENT AND ANCHORS AND ANCHORS
- ⑧ CAST-IN-PLACE CONCRETE WALL WITH REINFORCEMENT AND ANCHORS AND ANCHORS
- ⑨ PRECAST CONCRETE WALL WITH REINFORCEMENT AND ANCHORS AND ANCHORS AND ANCHORS
- ⑩ CAST-IN-PLACE CONCRETE WALL WITH REINFORCEMENT AND ANCHORS AND ANCHORS AND ANCHORS

[illegible][illegible][illegible][illegible][illegible]

