



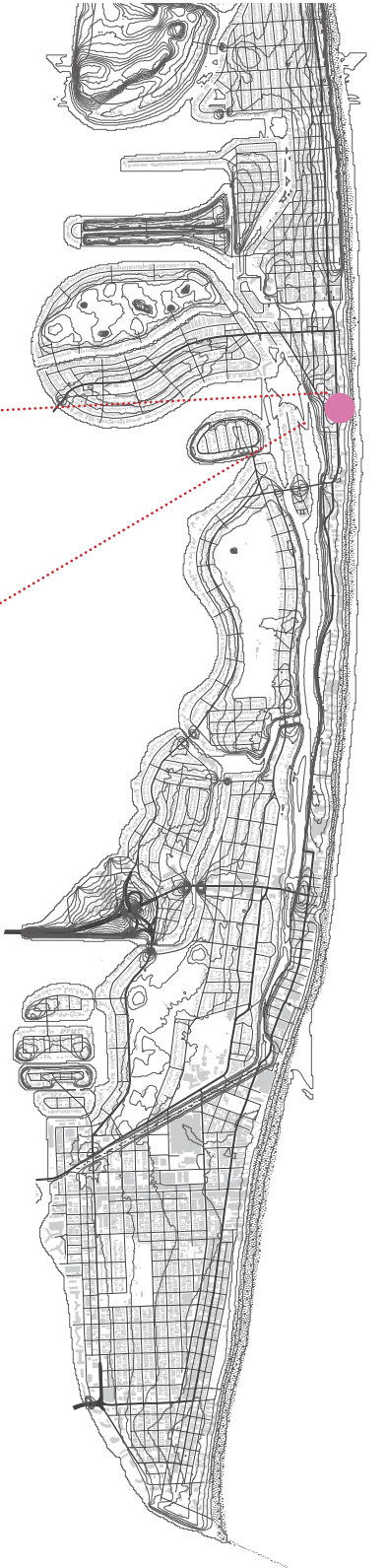
August 11, 2024  
The Deauville  
6701 Collins Avenue  
**First Submittal**  
**LDR Amendment | PB24-0693**  
**Comprehensive Plan | PB24-0708**



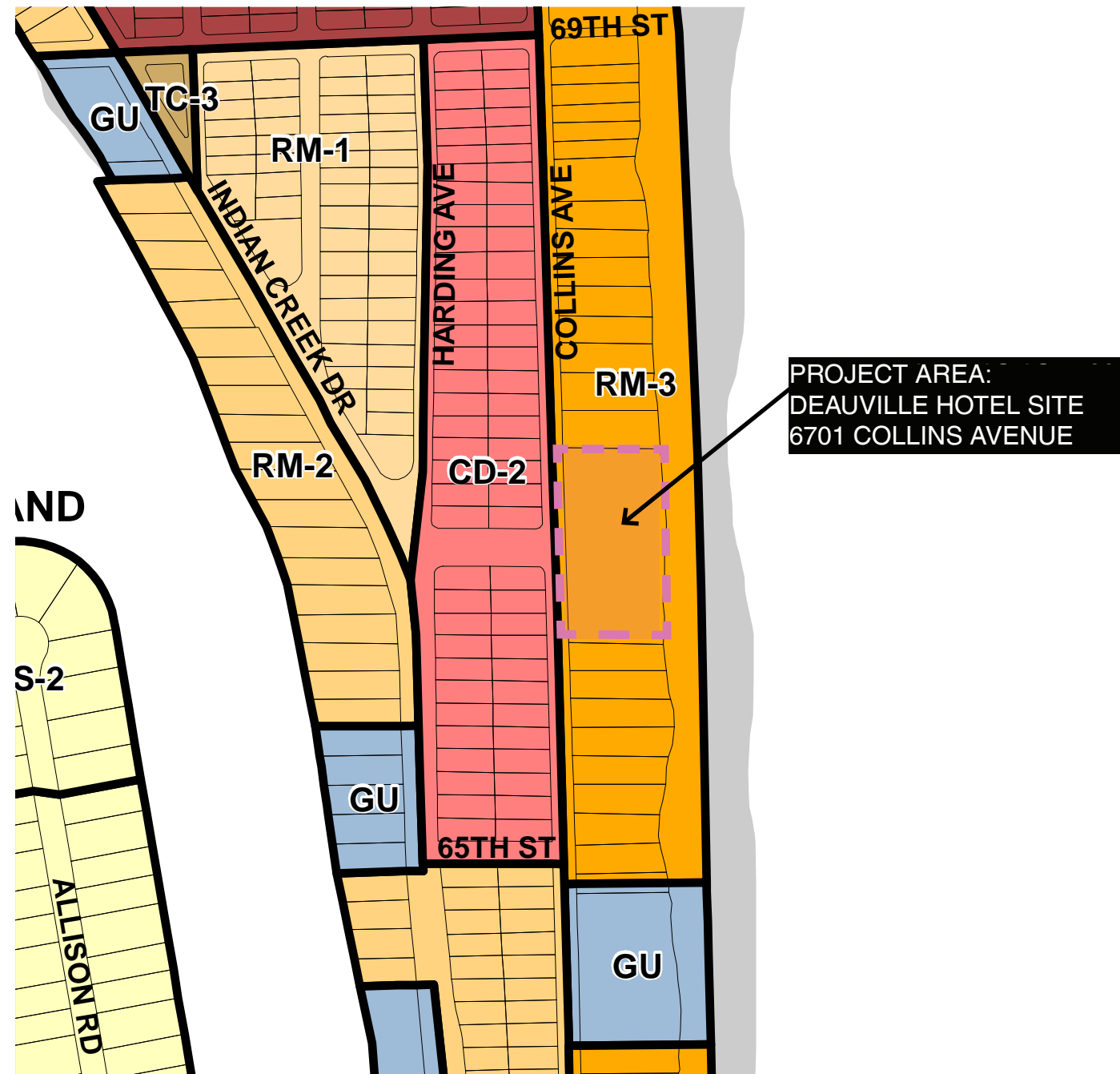


DEDICATED DEAUVILLE  
PARKING GARAGE

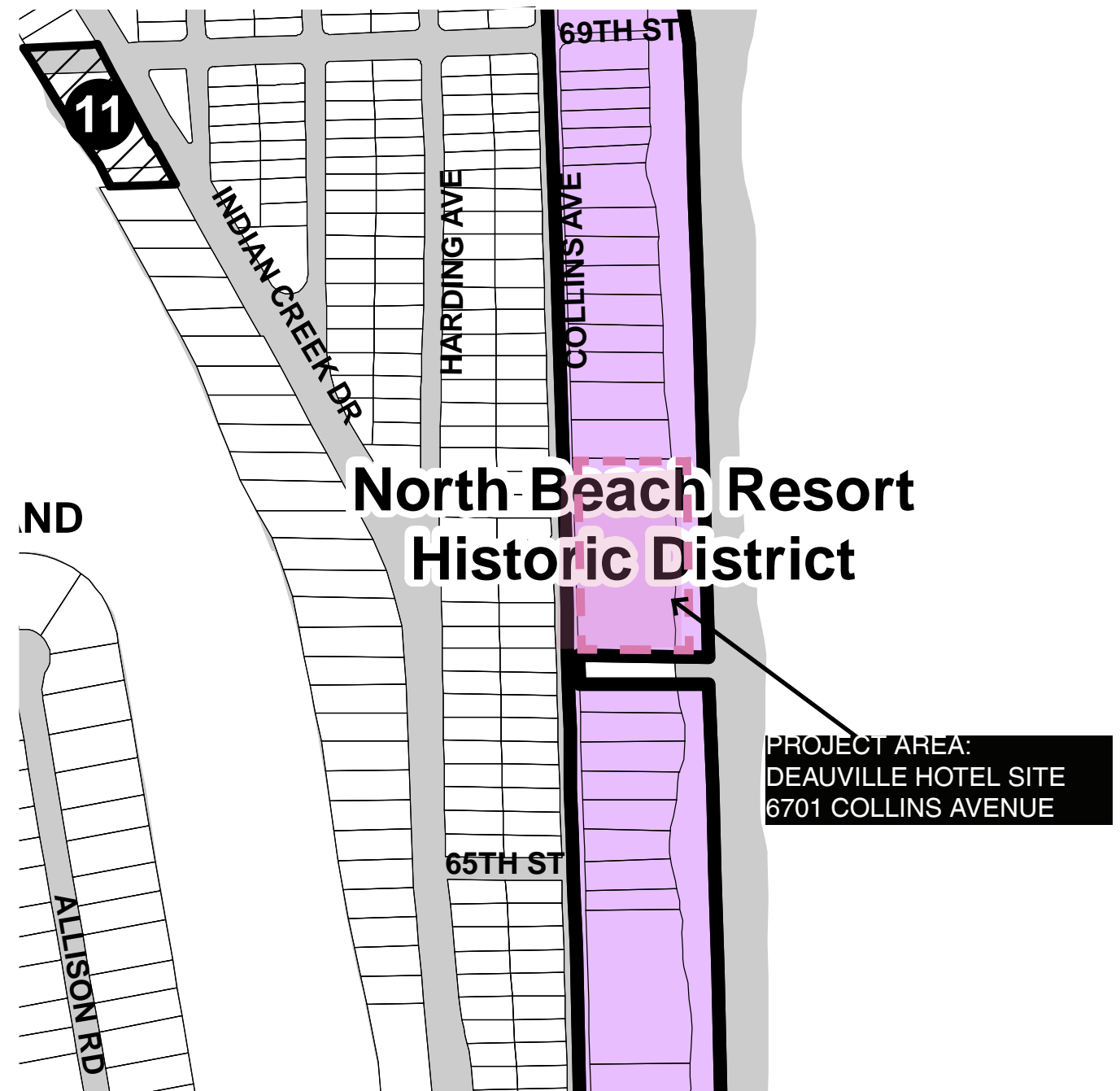
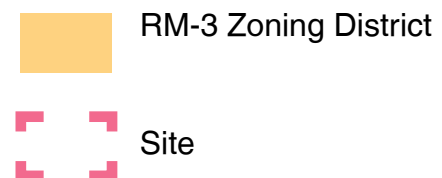
PROJECT AREA:  
DEAUVILLE HOTEL SITE  
6701 COLLINS AVENUE



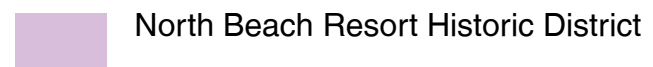




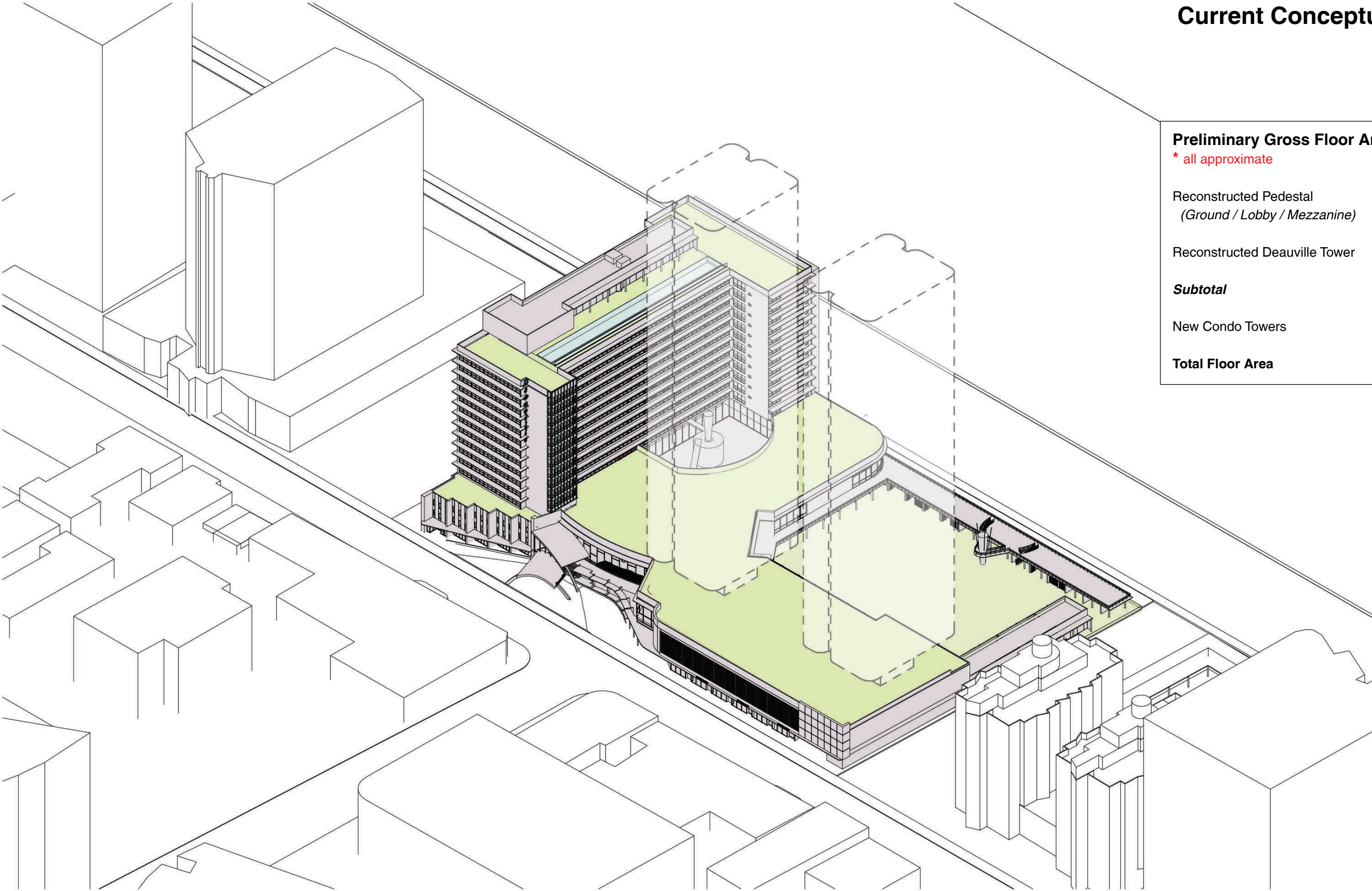
ZONING MAP



HISTORIC DISTRICT MAP



# Current Conceptual Strategy



## Preliminary Gross Floor Areas

\* all approximate

Reconstructed Pedestal  
(Ground / Lobby / Mezzanine) 162,400

Reconstructed Deauville Tower 234,408

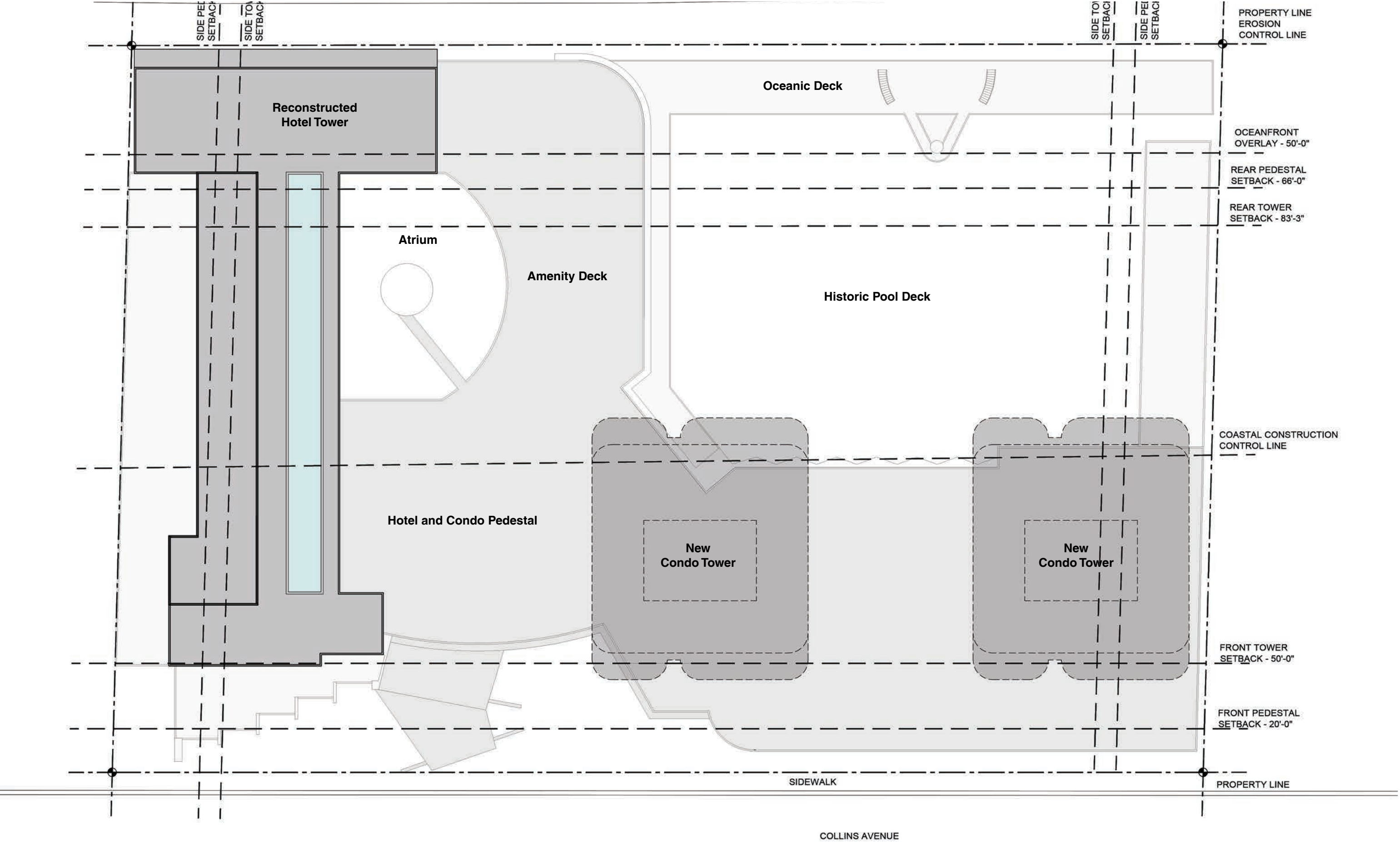
**Subtotal 396,808**

New Condo Towers 500,000

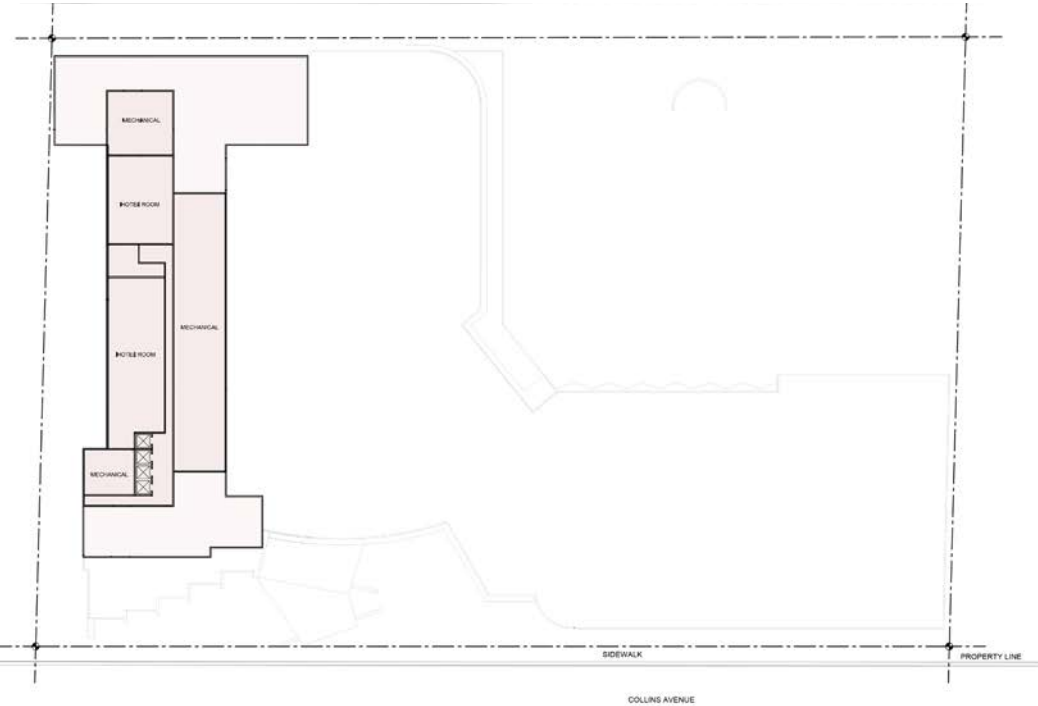
**Total Floor Area 896,808 sf**



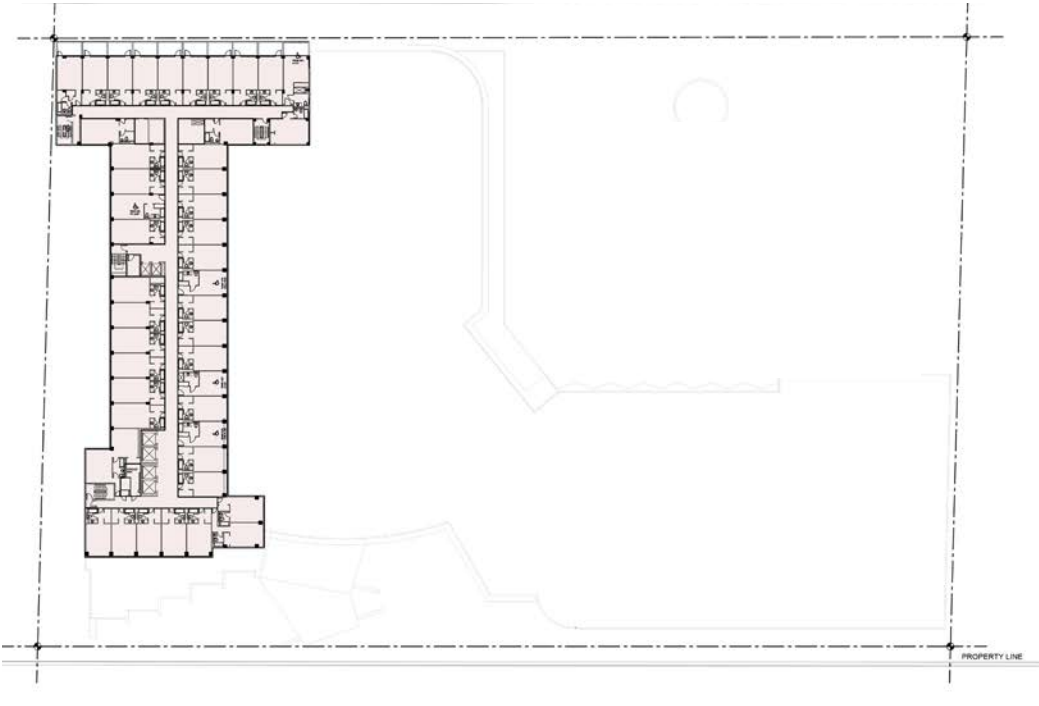
Conceptual Site Plan



Original Floor Area Diagrams



Penthouse Floor  
ca 13,219 SF



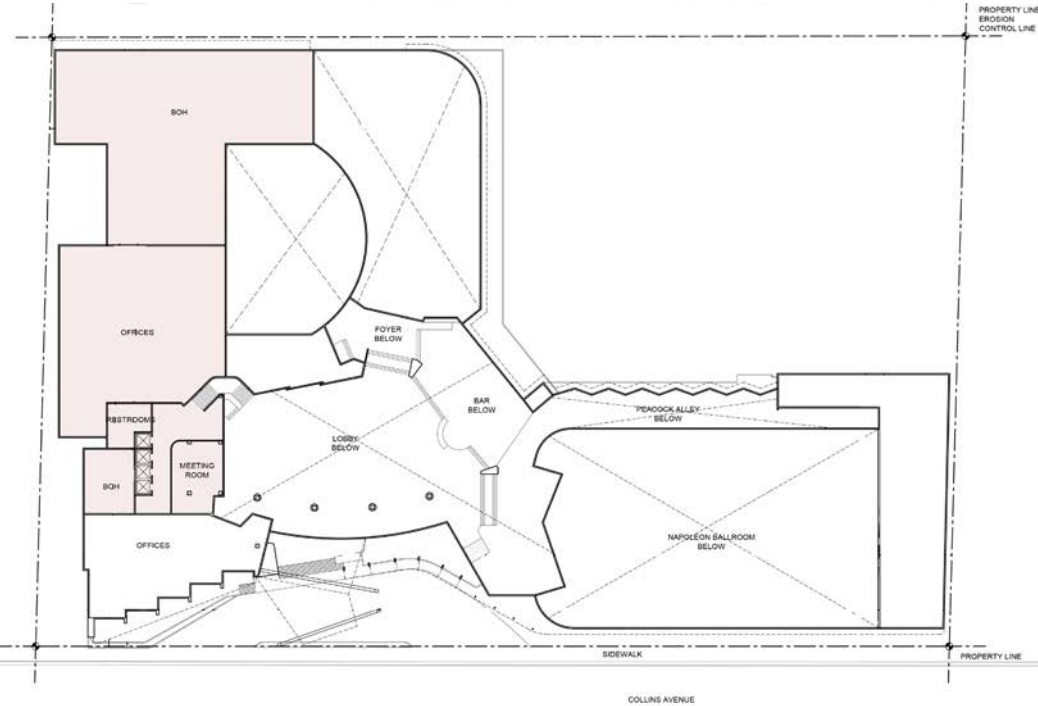
Hotel Floor (x 12)  
ca 22,860 SF

Floor Area Calculations

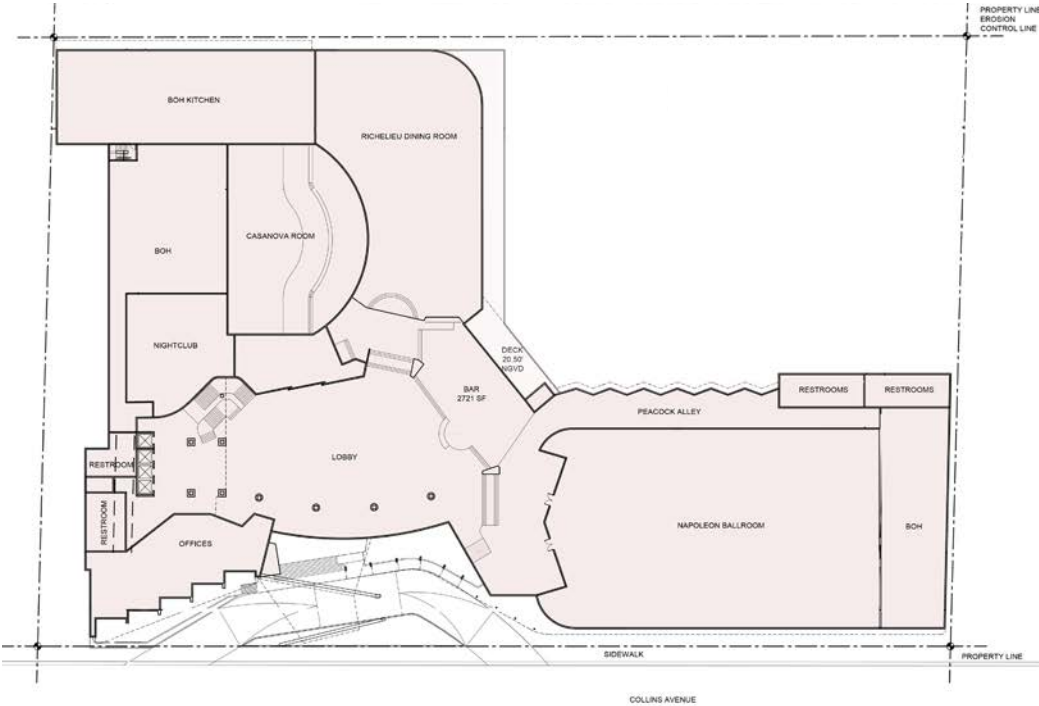
\* all approximate

Level 1 - Ground	92,560
Level 2 - Lobby	
Level 3 - Mezzanine	93,527
Level 4 - Hotel	28,009
Level 5 - Hotel	22,860
Level 6 - Hotel	22,860
Level 7 - Hotel	22,860
Level 8 - Hotel	22,860
Level 9 - Hotel	22,860
Level 10 - Hotel	22,860
Level 11 - Hotel	22,860
Level 12 - Hotel	22,860
Level 13 - Hotel	22,860
Level 14 - Hotel	22,860
Level 15 - Hotel	22,860
Level 16 - Penthouse	13,219

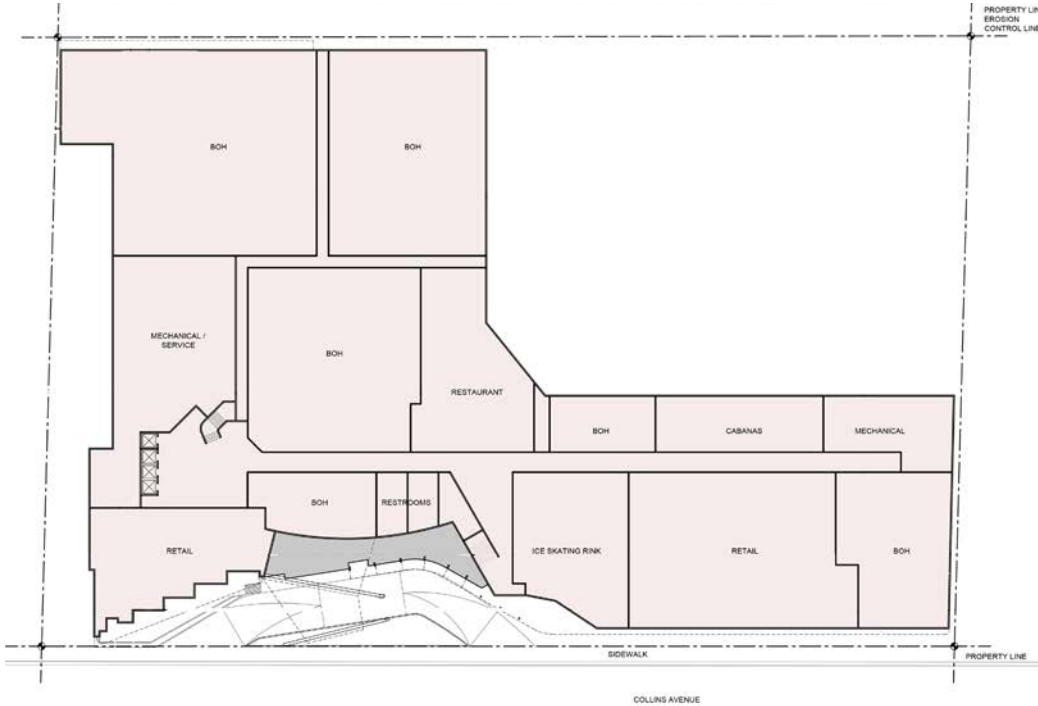
Total Floor Area ca 501,635 sf



Mezzanine  
ca 28,009 SF

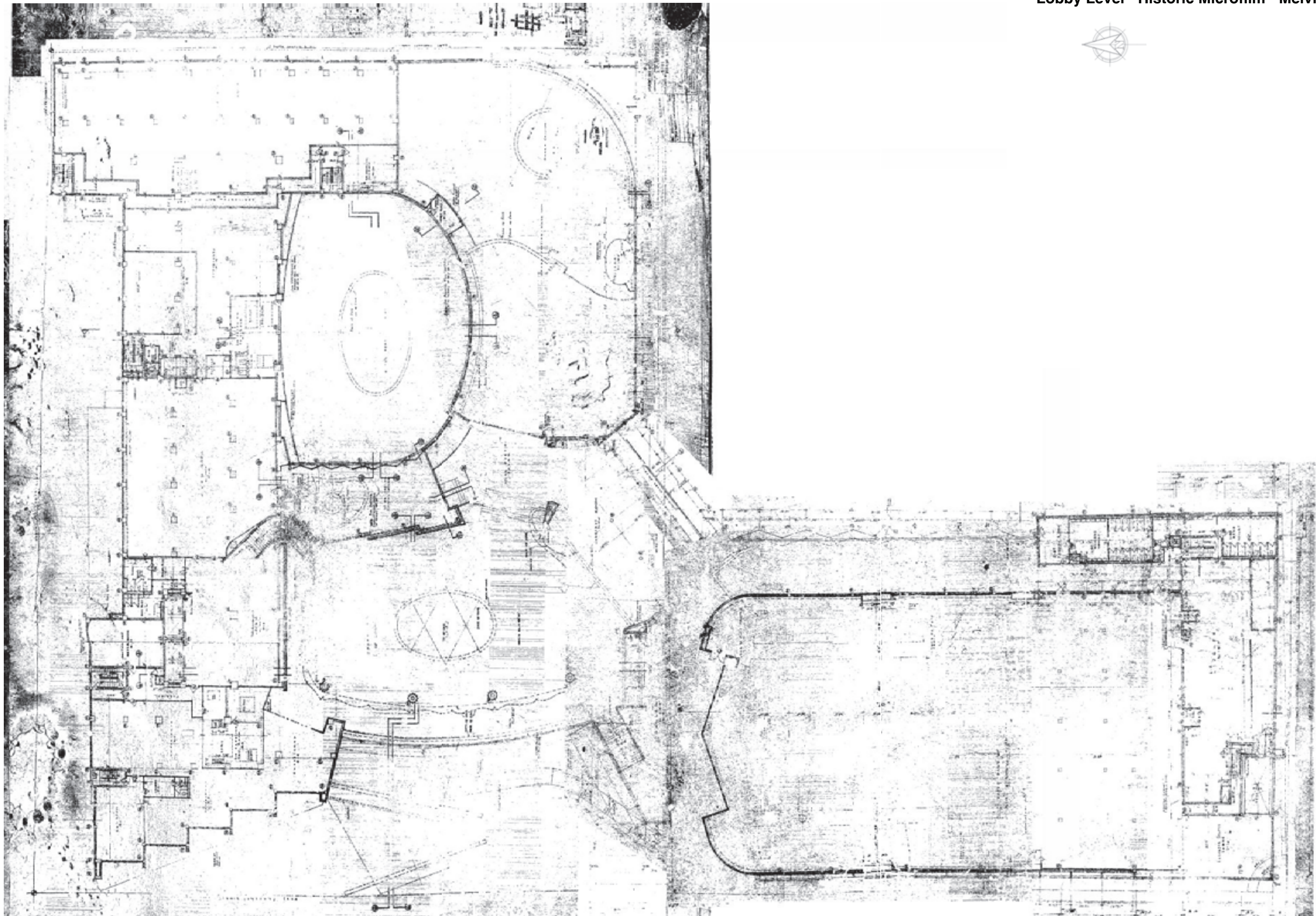


Lobby  
ca 93,527 SF

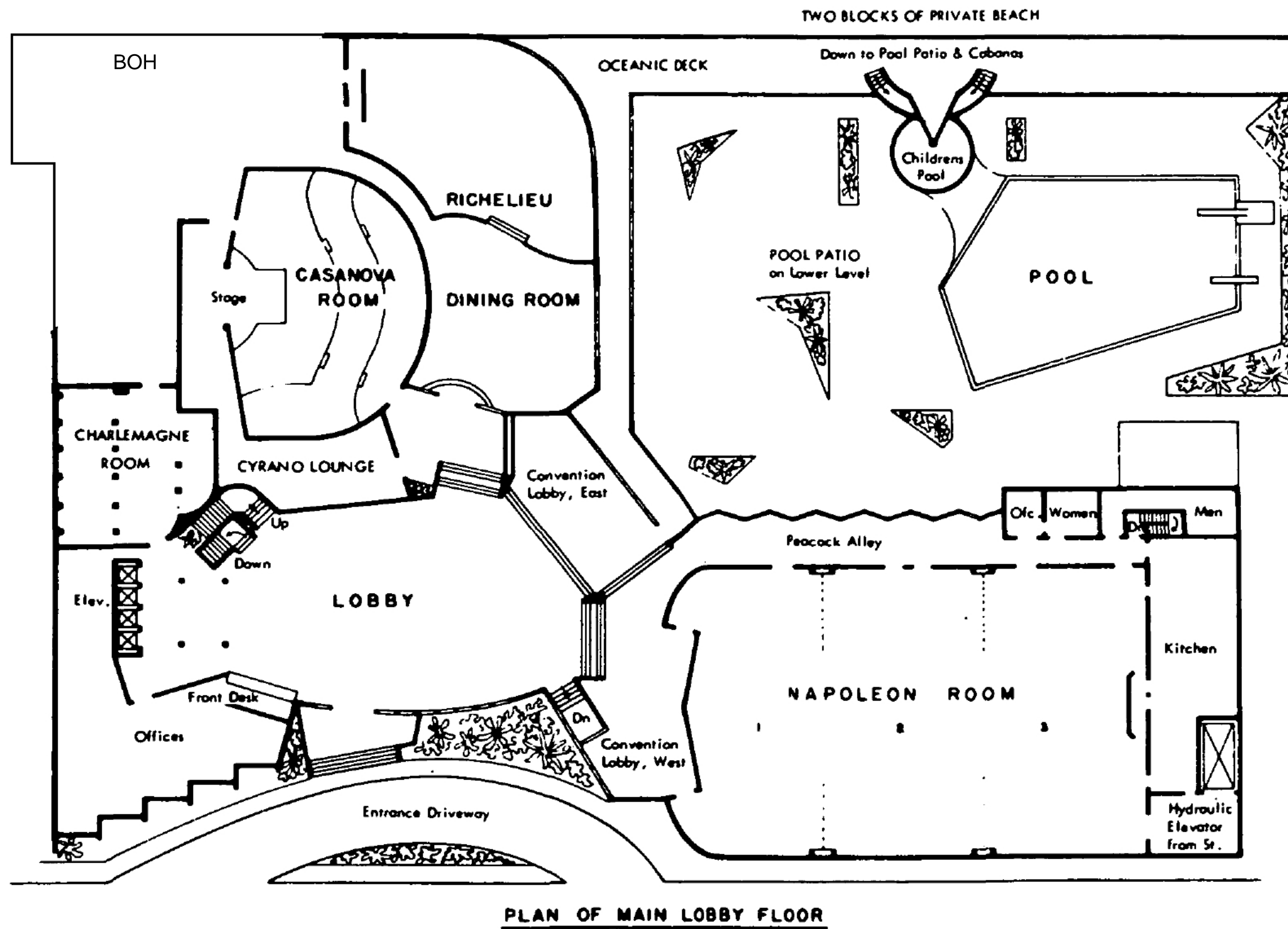


Ground Floor  
ca 92,560 SF





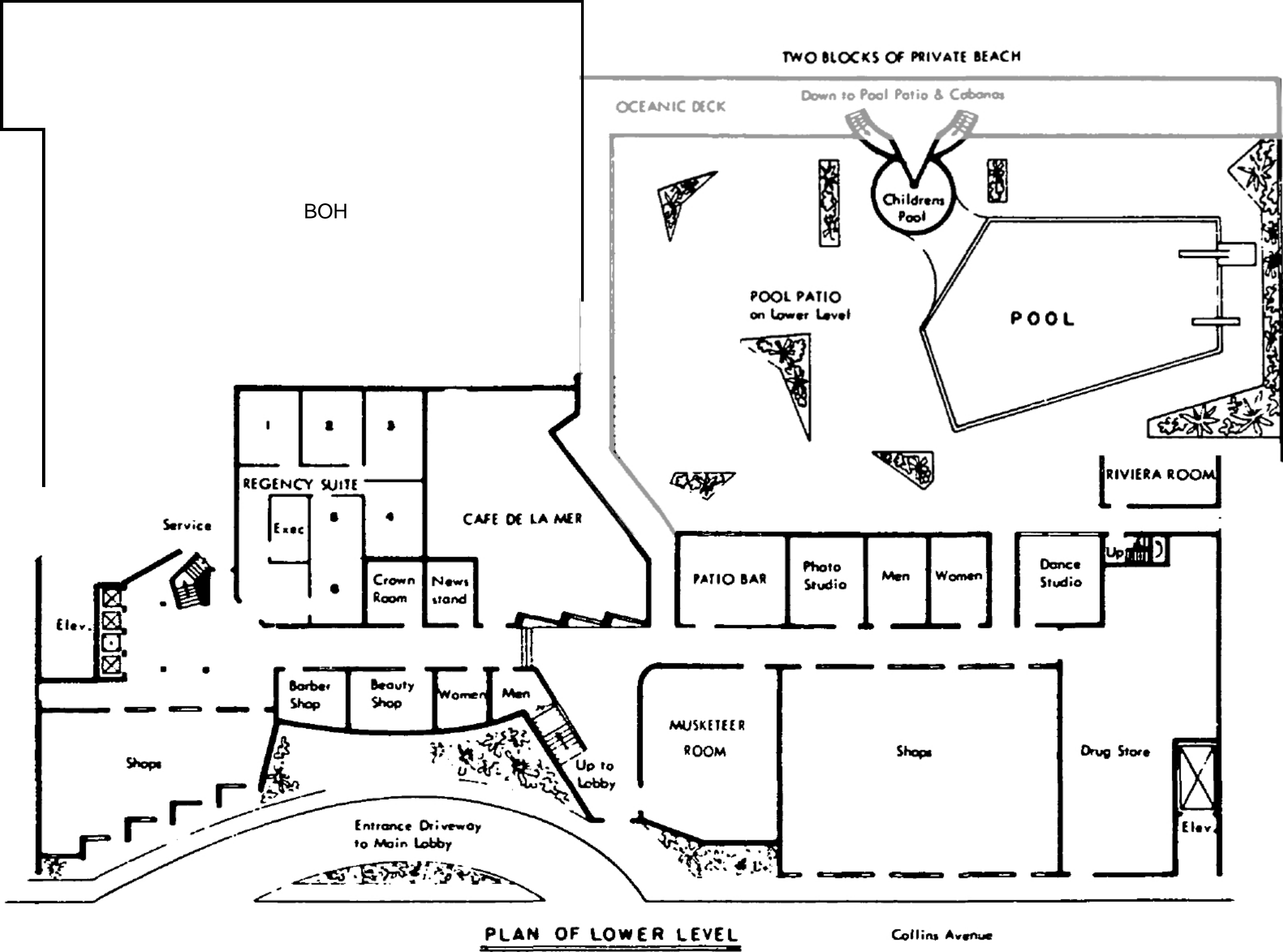




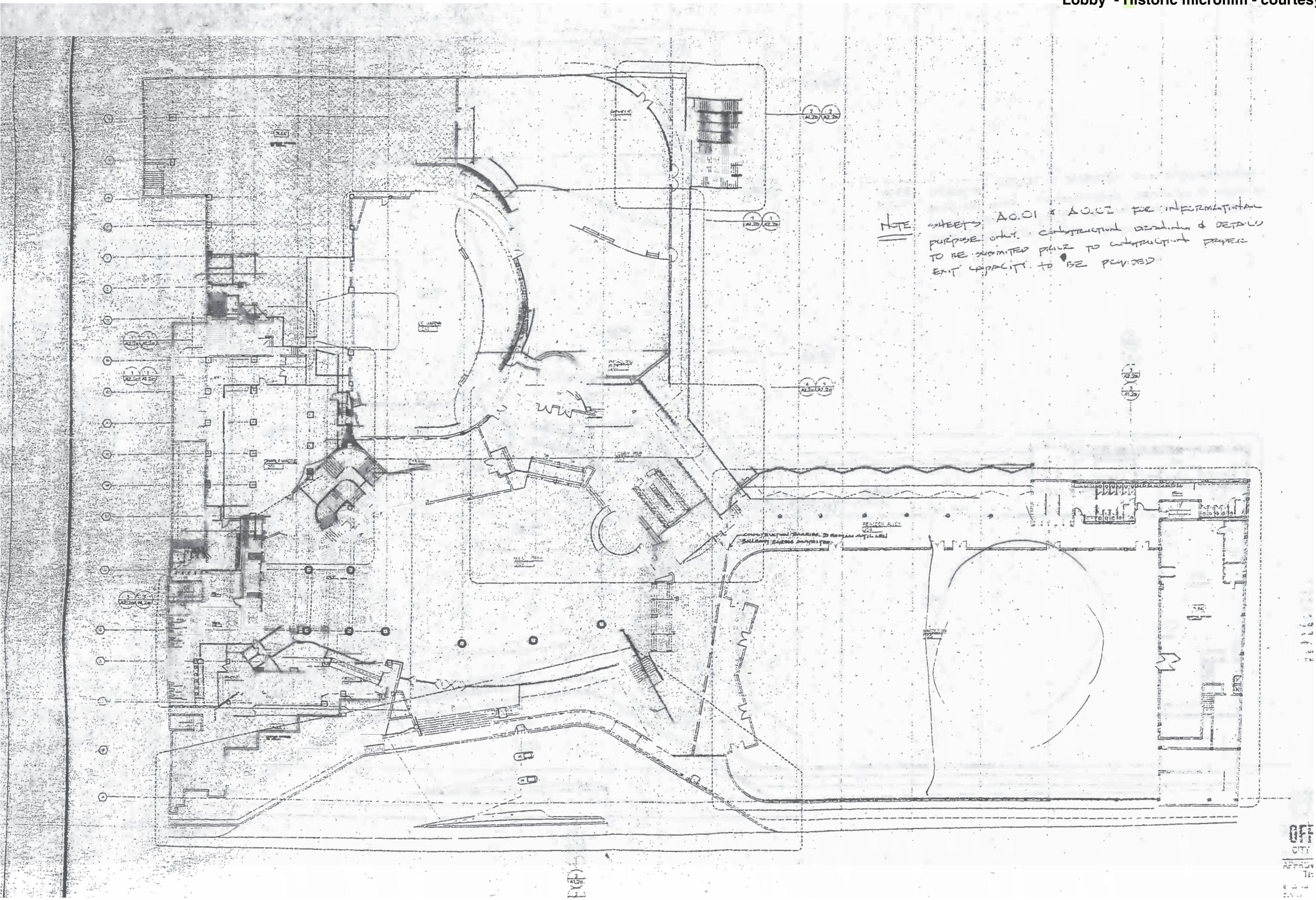




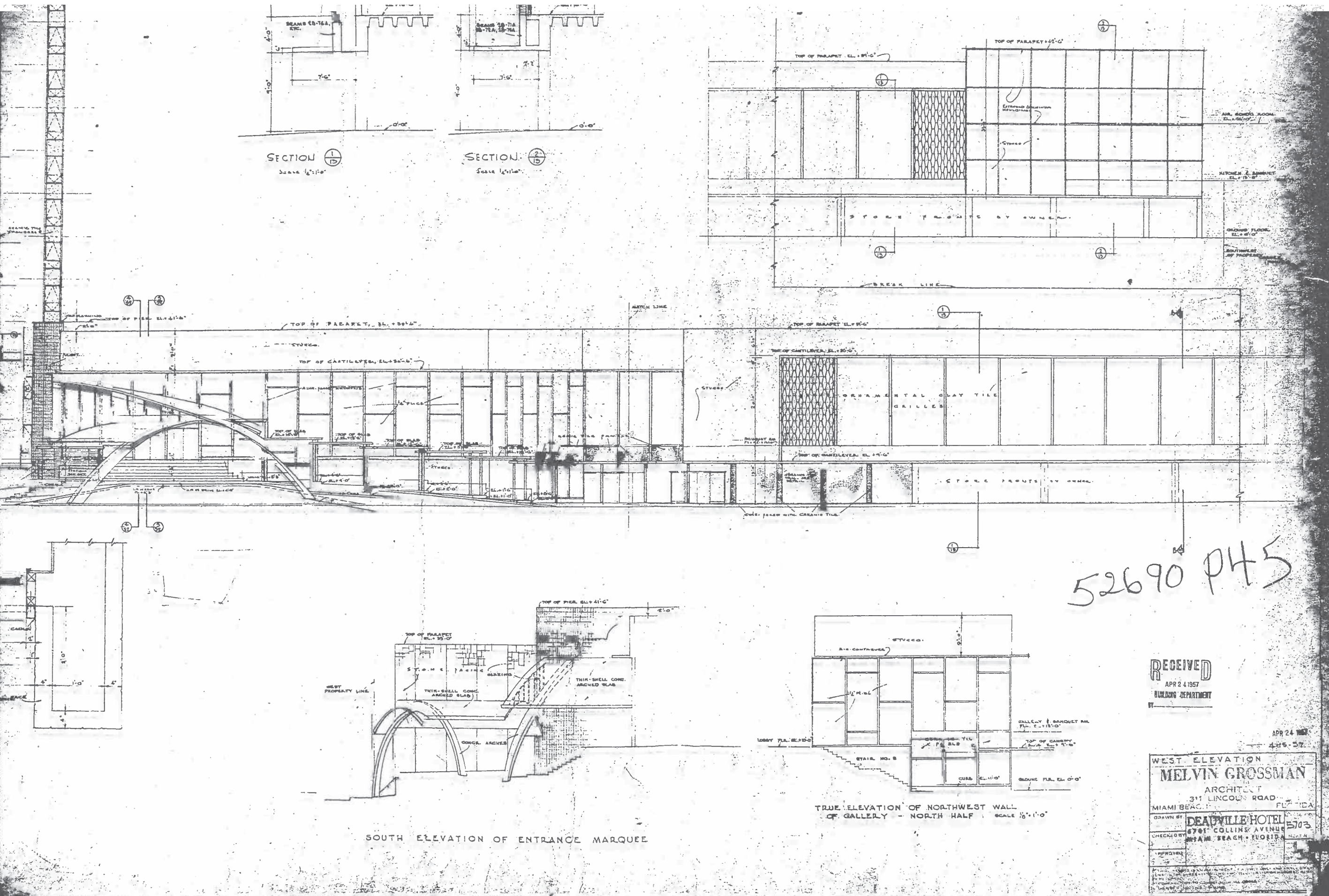












RECEIVED  
APR 24 1957  
BUILDING DEPARTMENT

APR 24 1957  
4:26-57

WEST ELEVATION  
MELVIN GROSSMAN  
ARCHITECT  
311 LINCOLN ROAD  
MIAMI BEACH, FLA.

DRAWN BY: DEADVILLE HOTEL  
5703  
5701 COLLINS AVENUE  
MIAMI BEACH, FLORIDA

CHECKED BY: [Signature]  
APPROVED BY: [Signature]



