

STRUCTURAL DRAWINGS

GENERAL:

CODES:

1. FLORIDA BUILDING CODE, FBC 2023 EIGHTH EDITION.
2. AMERICAN CONCRETE INSTITUTE "BUILDING CODE REQUIREMENTS FOR STRUCTURAL CONCRETE" ACI 318-11.
3. AMERICAN FOREST AND PAPER ASSOCIATION "NATIONAL DESIGN SPECIFICATION FOR WOOD CONSTRUCTION", NDS-05 ("N" & "P").
4. AMERICAN CONCRETE INSTITUTE "BUILDING CODE REQUIREMENTS FOR MASONRY STRUCTURES" ACI 530-11.
5. AMERICAN CONCRETE INSTITUTE "GUIDE FOR SHORING/RESHORING OF CONCRETE MULTISTORY BUILDINGS" ACI 347.2R-14.
6. AMERICAN SOCIETY OF CIVIL ENGINEERS "MINIMUM DESIGN LOADS FOR BUILDINGS AND OTHER STRUCTURES" ASCE 7-22
7. AMERICAN INSTITUTE OF STEEL CONSTRUCTION AISC (ASD 19TH EDITION)

GENERAL NOTES:

THESE DRAWINGS SHOW THE APPLICATION OF SHORING PRODUCTS TO THIS SPECIFIC PROJECT, BUILDING OR STRUCTURE AND ARE BASED ON INFORMATION CONTAINED IN PROJECTE CONSTRUCTION DRAWINGS SUPPLIED TO RC GROUP LLC BY THE CUSTOMER. THESE DRAWINGS DO NOT SHOW ALL SPECIFIC CONSTRUCTION SITE DETAILS. ENGINEERING SPECIFIC ON-SITE DESIGN DETAILS UNIQUE TO THIS APPLICATION ARE THE RESPONSIBILITY OF THE CUSTOMER.

1. ALL DIMENSIONS AND DETAILS SHOWN ON THIS LAYOUT MUST BE CHECKED AND VERIFIED BY THE CONTRACTOR BEFORE PROCEEDING WITH ANY WORK.
2. THE APPROXIMATE AMOUNT OF SCREW JACK EXTENSIONS HAS BEEN SHOWN. THESE EXTENSIONS MAY HAVE TO BE ADJUSTED DUE TO FIELD CONDITIONS. HOWEVER, THE MAXIMUM SCREW JACK EXTENSION FOR THIS LAYOUT IS LIMITED TO 12 INCHES TOP AND 12 INCHES BOTTOM.
3. SUITABLE SILLS MUST BE PROVIDED TO PROPERLY DISTRIBUTE THE IMPOSED SHORING LOADS OVER THE GROUND OR SUPPORTING FOUNDATION TO ASSURE ADEQUATE STABILITY FOR ALL SHORING LEGS.
4. ALL STRINGERS, LEDGERS OR OTHER MEMBERS RESTING ON EQUIPMENT MUST BE CENTERED DIRECTLY OVER THE SHORING LEGS.
5. IN SETTING ELEVATIONS, ALLOW FOR COMPRESSION OF LUMBER.
6. THE SHORING EQUIPMENT DEPICTED ON THIS AND THE ATTACHED DRAWINGS MUST BE ERECTED SO AS TO CONFORM TO ALL CURRENT RC GROUP LLC "SAFETY GUIDELINES" AND TO ALL FEDERAL, STATE AND LOCAL REGULATIONS.
7. ALL STEEL BEAM LEDGERS OR STRINGERS MUST BE SECURED TO U-HEADS BY ONE (1) JUNIOR BEAM CLAMP PER U-HEAD ON ALTERNATE SIDES (SEE DETAIL: A- ON THIS DRAWING). ALL ALUMINUM BEAM LEDGERS OR STRINGERS MUST BE SECURED TO U-HEADS BY ONE (1) ALUMINUM BEAM CLAMP.
8. AT THE TIME THE LEDGER OR STRINGER IS PLACED IN THE U-HEAD, IT MUST BE IMMEDIATELY SECURED TO THE U-HEAD, WOOD LEDGERS OR STRINGERS ARE NAILED DIRECTLY TO THE U-HEAD (PREVIOUS NOTE FOR SECURING STEEL OR ALUMINUM BEAM LEDGERS OR STRINGERS).
9. ALL LOWER GRAMES OF A TOWER MUST BE PLUMB AND LEVEL BEFORE ERECTING THE REMAINDER OF THE TOWER.
10. THE RESHORING IS THE RESPONSIBILITY OF THE CONTRACTOR AND SHOULD BE THOROUGHLY CHECKED BY THE ARCHITECT/ENGINEER TO DETERMINE THAT IT IS PROPERLY PLACED AND THAT IT HAS THE LOAD CAPACITY TO SUPPORT THE AREAS THAT ARE BEING RESHORED.
11. TOWER LEG LOADING SHOULD BE AS UNIFORMLY DISTRIBUTED AS POSSIBLE. NEVER LOAD ONLY ONE LEG OF A FRAME OR ONE FRAME OF A TOWER.
12. ALL DRAWINGS THAT INCORPORATE HORIZONTAL SHORING BEAMS OTHER THAN SHORING COMPANY'S MUST BE INSTALLED ACCORDING TO THE MANUFACTURER'S ERECTION INSTRUCTIONS. THEREFORE, THIS LAYOUT IS FOR ILLUSTRATIVE PURPOSES ONLY AND SHOULD BE CHECKED BY THE MANUFACTURER AND/OR SUPPLIER FOR CONFORMANCE WITH THEIR SPECIFICATIONS.
13. WHEN TOWERS ARE DIAGONALLY BRACED TO GRADE OR SOME OTHER POINT, BY GUYING OR OTHER MEANS, THE VERTICAL COMPONENT OF THE DIAGONAL LOAD MUST BE INCLUDED IN THE ALLOWABLE TOWER LED LOAD.
14. DO NOT CLIMB ON LACING AND BRACING.
15. SHORE FRAMES AND COMPONENTS WERE DESIGNED AS AN INTEGRAL SYSTEM AND SHALL NOT BE INTERMIXED WITH OTHER MANUFACTURERS COMPONENTS.

SAFETY GUIDELINES:

SHORING FOR CONCRETE FORMWORK SHORING SAFETY IS EVERYONE'S RESPONSIBILITY! EVERYONE'S SAFETY DEPENDS UPON THE PROPER ERECTION AND SAFE USE OF SHORING. INSPECT YOUR SHORING BEFORE EACH USE TO SEE THAT THE ASSEMBLY HAS NOT BEEN ALTERED AND IS SAFE FOR YOUR USE. POST THESE SHORING SAFETY RULES IN A CONSPICUOUS PLACE AND BE SURE THAT ALL PERSONS WHO ERECT, USE OR DISMANTLE SHORING ARE AWARE OF THEM. FOLLOW ALL STATE, LOCAL AND FEDERAL CODES, ORDINANCES AND REGULATIONS PERTAINING TO SHORING. INSPECT ALL EQUIPMENT BEFORE USING. NEVER USE ANY EQUIPMENT THAT IS DAMAGED, SEVERELY RUSTED, OR IS MISSING LOCKING DEVICES. ANY COMPONENT WHICH CANNOT BE BROUGHT INTO PROPER ALIGNMENT OR CONTACT WITH THE COMPONENT INTO OR ONTO WHICH IT IS INTENDED TO FIT SHALL BE REMOVED AND REPLACED. A SHORING LAYOUT SHALL BE AVAILABLE AND USED ON THE JOB SITE AT ALL TIMES. INSPECT ERECTED SHORING AND FORMING FOR CONFORMITY WITH LAYOUT AND SAFETY PRACTICES PRIOR TO POUR, DURING POUR, AND AFTER POUR UNTIL CONCRETE IS SET.

SAFETY GUIDELINES:

WARNING! SERIOUS INJURY OR DEATH CAN RESULT FROM YOUR FAILURE TO FAMILIARIZE YOURSELF AND COMPLY WITH ALL APPLICABLE SAFETY REQUIREMENTS OF FEDERAL, STATE, AND LOCAL REGULATIONS. UNDERTAKE THESE SAFETY GUIDELINES BEFORE ERECTING, USING, OR DISMANTLING THIS SHORING.

I.-PRIOR TO THE POUR

- I.1.-GENERAL
- I.1.1.-USED SHORING COMPANY'S RECOMMENDED SAFE WORKING LOADS AND PROCEDURES FOR:
- I.1.1.A.-SPAN, SPACING AND TYPES OF SHORING MEMBERS
- I.1.1.B.-TYPES, SIZES, HEIGHTS AND SPACING OF VERTICAL SHORING SUPPORTS.
- I.1.2.-PROVIDE PROPER FOUNDATION (SILLS, BEAMS, OR CRIBBING) BELOW BASE PLATES FOR THE DISTRIBUTION OF LET LEADS TO CONCRETE SLABS OR GROUND. EXISTING GROUND SHALL BE LEVELED AND THOROUGHLY COMPACTED PRIOR TO ERECTION OF SHORING TO PREVENT SETTLEMENT. CONSIDERATIONS MUST BE GIVEN TO POTENTIAL ADVERSE WEATHER CONDITIONS THROUGHOUT THE POUR CYCLE SUCH AS WASHOUTS, FREEZING AND THAWING OF GROUND, ETC. CONSULT A QUALIFIED SOILS ENGINEER TO DETERMINE THE PROPER SIZE FOUNDATION REQUIRED FOR EXISTING GROUND CONDITIONS.
- I.1.3.-DO NOT MAKE UNAUTHORIZED CHANGES OR SUBSTITUTION OF EQUIPMENT; ALWAYS CONSULT YOUR SHORING COMPANY SUPPLIER PRIOR TO MAKING CHANGES NECESSITATED BY JOB SITE CONDITIONS.
- I.1.4.-ACCESS MUST BE PROVIDED TO ALL FORMING DECK LEVELS. IF IT IS NOT AVAILABLE FROM THE STRUCTURE, ACCESS LADDERS OR STAIR TOWERS MUST BE PROVIDED. ACCESS LADDERS MUST EXTEND AT LEAST THREE (3) FEET ABOVE FORMWORK.

WARNING!

FALL ARREST EQUIPMENT ATTACHED TO SHORING MAY NOT PREVENT SERIOUS INJURY OR DEATH IF FALL OCCURS. I.1.5.-FASTEN ALL BRACES SECURELY. I.1.6.-CHECK TO SEE THAT ALL CLAMPS, SCREWS, PINS AND ALL OTHER COMPONENTS ARE IN A CLOSED OR ENGAGED POSITION. I.1.7.-MAKE CERTAIN THAT ALL BASE PLATES AND SHORE HEADS ARE IN FIRM CONTACT WITH THE FOUNDATIONS AND FORMING MATERIAL. I.1.8.-USE SPECIAL PRECAUTIONS WHEN SHORING TO OR FROM SLOPED SURFACES. I.1.9.-AVOID ECCENTRIC LOADS ON U-HEADS AND TOP PLACES BY CENTERING STRINGERS ON THESE MEMBERS. I.1.10.-AVOID SHOCK OR IMPACT LOADS FOR WHICH THE SHORING WAS NOT DESIGNED. I.1.11.-THE COMPLETED SHORING SETUP SHALL HAVE THE SPECIFIED BRACING TO GIVE IT LATERAL STABILITY. I.1.12.-THE ERECTION OF SHORING SHOULD BE UNDER THE SUPERVISION OF AN EXPERIENCED AND COMPETENT PERSON.

I.2.-FRAME SHORING

- I.2.1.-FOLLOW THE SHORING LAYOUT DRAWING AND DO NOT OMIT REQUIRED COMPONENTS.
- I.2.2.-DO NOT EXCEED THE SHORE FRAME SPACINGS OR TOWER HEIGHTS AS SHOWN ON THE SHORING LAYOUT.
- I.2.3.-SHORING LOAD MUST BE CARRIED ON ALL LEGS.
- I.2.4.-PLUMB AND LEVEL ALL SHORING FRAMES AS THE ERECTION PROCEEDS, AND CHECK PLUMB AND LEVEL OF SHORING TOWERS JUST PRIOR TO POURING.
- I.2.5.-DO NOT FORCE BRACES ON FRAMES TO FIT LEVEL THE SHORING TOWERS UNTIL PROPER FIT CAN BE MADE EASILY.
- I.2.6.-TIE HIGH TOWERS OF SHORING FRAMES TOGETHER WITH SUFFICIENT BRACES TO MAKE A RIGID, SOLID UNIT (CONSULT YOUR SHORING COMPANY REPRESENTATIVE FOR RECOMMENDATIONS). SHORING MUST ALWAYS BE SECURED WHEN THE HEIGHT OF THE SHORING TOWERS EXCEEDS FOUR (4) TIMES THE MINIMUM BASE WIDTH. SEE NOTE 1.
- I.2.7.-EXERCISE CAUTION IN ERECTING OR DISMANTLING FREE STANDING SHORING TOWERS TO PREVENT TIPPING.
- I.2.8.-DO NOT CLIMB CROSS BRACES

I.3.-SCREW JACKS

- I.3.1.-USE SCREW JACKS TO ADJUST FOR UNEVEN GRADE CONDITIONS, TO LEVEL AND ACCURATELY POSITION THE FALSEWORK AND FOR EASY STRIPPING.
- I.3.2.-DO NOT EXCEED SHORING COMPANY'S RECOMMENDED MAXIMUM EXTENSION OF SCREW JACKS. KEEP SCREW JACK EXTENSIONS TO A MINIMUM FOR A MAXIMUM LOAD CARRYING CAPACITY.
- I.3.3.-MAKE CERTAIN THAT ALL SCREW JACKS ARE FIRMLY IN CONTACT WITH THE FOUNDATION AND FRAME LEGS.

I.4.-HORIZONTAL SHORING

- I.4.1.-SPECIAL CONSIDERATION MUST BE GIVEN TO THE INSTALLATION OF HORIZONTAL SHORING:
- I.4.1.A.-WHEN SLOPED OR SUPPORTED BY SLOPING LEDGERS (STRINGERS).
- I.4.1.B.-WHEN LEDGER (STRINGER) HEIGHT/WIDTH RATIO EXCEEDS 2.5 TO 1.
- I.4.1.C.-WHEN ECCENTRIC LOADING CONDITIONS EXIST.
- I.4.1.D.-WHEN LEDGER (STRINGER) CONSISTS OF MULTIPLE MEMBERS (I.E., DOUBLE 2X6, 2X8, ETC.).
- I.4.1.E.-WHEN HORIZONTAL SHORES ARE PLACED OTHER THAN AT RIGHT ANGLES TO THEIR SUPPORTS.
- I.4.2.-ASSURE THAT BEARING ENDS OF SHORING BEAMS ARE PROPERLY SUPPORTED AND THAT LOCKING DEVICES ARE PROPERLY ENGAGED BEFORE PLACING ANY LOADS ON BEAMS.
- I.4.3.-HORIZONTAL SHORING BEAMS SHOULD NOT BE SUPPORTED OTHER THAN AT THE BEARING PRONGS UNLESS RECOMMENDED BY YOUR SHORING COMPANY SUPPLIER. CANTILEVER "MALE END" OF SHORING COMPANY HORIZONTAL BEAMS ONLY. CANTILEVER SHALL NOT EXCEED 24".
- I.4.4.-DO NOT NAIL BEAM BEARING ENDS TO LEDGER.
- I.4.5.-PROVIDE AND MAINTAIN ADEQUATE SUPPORT TO PROPERLY DISTRIBUTE SHORING LOADS. WHEN
- I.4.5.A.-MASONRY WALL- INSURES THAT MASONRY UNITS HAVE ADEQUATE STRENGTH. BRACE WALLS AS NECESSARY.
- I.4.5.B.-LEDGERS- SUPPORTED BY WALLS USING BOLTS, OR OTHER MEANS, SHOULD BE PROPERLY DESIGNED AND INSTALLED PER RECOMMENDATION OF SUPPLIER OR JOB ARCHITECT/ ENGINEER.
- I.4.5.C.-FORMWORK = SHORING BEAMS SHOULD BE DESIGNED FOR THE ADDITIONAL LOADS IMPOSED BY THE FORMWORK.
- I.4.5.D.-STRUCTURAL STEEL FRAMEWORK - THE ABILITY OF THE STEEL TO SUPPORT ALL LOADING SHOULD BE CHECKED AND APPROVED BY THE RESPONSIBLE PROJECT ARCHITECT/ ENGINEER.
- I.4.5.E.-STEEL HANGERS- BE SURE THE BEARING ENDS FULLY ENGAGE ON THE HANGERS. THE HANGERS SHALL BE DESIGNED TO CONFORM TO THE BEARING END AND SHALL HAVE A RATED STRENGTH TO SAFELY SUPPORT THE SHORING LOADS IMPOSED. HANGERS MUST BE PLATE SADDLE RATHER THAN WIRE TYPE. CHECK WITH MANUFACTURER OF HANGERS FOR SPECIFIC APPLICATION. (FOLLOW HANGER MANUFACTURER'S RECOMMENDATIONS)

I.5.-FINAL INSPECTION

- BE SURE THAT:
- I.5.1.-THERE IS SOUND FOUNDATION UNDER EVERY LEG.
- I.5.2.-ALL BASE PLATES AND SCREW JACKS ARE IN FIRM CONTACT WITH FOUNDATION
- I.5.3.-EVERY COMPONENT (INCLUDING EXTERIOR BRACING) AGREES WITH THE SHORING LAYOUTS AS TO TYPE, SPAN, NUMBER, LOCATION AND SIZE.
- I.5.4.-ALL SHORE PINS ARE PROPERLY INSTALLED AND FULLY SEATED.
- I.5.5.-ALL FRAMES ARE PLUMB AND BRACED TO FORM TOWERS AND/OR ALL POSTS ARE PLUMB AND BRACE AS REQUIRED BY USER INSTRUCTIONS.
- I.5.6.-ALL FORMWORK FOLLOWS FORMING LAYOUT AND HORIZONTAL BEAMS FULLY BEAR ON THEIR SUPPORTS.
- I.5.7.-ALL CLAMPS, SCREWS, PINS AND OTHER FASTENERS (INCLUDING LOCKING DEVICES ON ADJUSTABLE BEAMS) ARE CLOSED, TIGHTENED, OR ENGAGED.

II.-DURING CONSTRUCTION

- II.1.-IN HURRICANE SEASON (FROM JUNE 1 THRU NOVEMBER 30) IF A STORM HITS THE AREA OF WORK, RE-INSPECTIONS ARE REQUIRED AT CONTRACTOR EXPENSES.

WARNING!

DO NOT POSITION WORKERS BELOW FORMWORK WHILE CONCRETE IS BEING PLACED.

III.-REMOVAL

LOADED SHORING EQUIPMENT SHALL NOT BE RELEASED OR REMOVED, INCLUDING CROSS BRACES, UNTIL THE APPROVAL OF A QUALIFIED ENGINEER HAS BEEN RECEIVED. PREMATURE RELEASING OR STRIPPING OF FORMS CAN CAUSE FAILURE. A QUALIFIED ENGINEER MUST DECIDE WHEN AND HOW STRIPPING IS TO PROCEED. WEATHER CONDITIONS, VARIATIONS IN DIFFERENT PARTS OF THE STRUCTURE AND THE SETTING QUALITIES OF THE CONCRETE ALL AFFECT THE STRIPPING.

IV.-RESHORING


- DEFINITION: RESHORING MEANS THE CONSTRUCTION OPERATION IN WHICH SHORING EQUIPMENT IS PLACED, AS THE ORIGINAL FORMS AND SHORES ARE REMOVED, IN ORDER TO SUPPORT PARTIALLY CURED CONCRETE AND CONSTRUCTION LOADS.
- IV.1.-RESHORING IS ONE OF THE MOST CRITICAL OPERATIONS IN FORMWORK; CONSEQUENTLY, RESHORING PROCEDURE MUST BE DESIGNED AND PLANNED IN ADVANCE BY A QUALIFIED STRUCTURAL ENGINEER AND APPROVED BY THE PROJECT ARCHITECT/ENGINEER.
- IV.2.-SLABS OR BEAMS WHICH ARE TO BE RESHORED SHOULD BE ALLOWED TO TAKE THEIR PERMANENT DEFLECTION BEFORE FINAL ADJUSTMENT OF RESHORING EQUIPMENT IS MADE.
- IV.3.-THE RESHORING SHALL BE THOROUGHLY CHECKED BY THE ARCHITECT/ ENGINEER TO DETERMINE THAT IT IS PROPERLY PLACED AND THAT IT HAS THE ALLOWABLE LOAD CAPACITY TO SUPPORT THE AREAS THAT ARE BEING RESHORED.
- IV.4.-EQUIPMENT TO BE LEFT IN POSITION FOR RESHORING SHOULD BE CHECKED THOROUGHLY BY A QUALIFIED ENGINEER. HORIZONTAL SHORING SHOULD NEVER BE USED AS A PART OF RESHORING SYSTEM. EXTREME CARE MUST BE TAKEN TO RELEASE THE ADJUSTMENT SCREWS TO A POINT WHERE THE SLAB TAKES ITS PERMANENT DEFLECTION. THE ADJUSTMENT SCREWS SHOULD THEN BE TIGHTENED UNTIL CONTACT IS AGAIN MADE WITH THE UNDERSIDE OF THE SLAB. IN THIS MANNER THE FRAME, RESHORING BELOW WILL NOT BE CARRYING THE LOAD OF THE SLAB THAT IT HAD PREVIOUSLY SHORED.

NOTE 1:

- HEIGHT-TO-MINIMUM BASE WIDTH RATIO OF THREE TO ONE (3:1). REFER TO THE GOVERNING CODES FOR YOUR JOB LOCATION.
1. FOR LOCATION AREA REFER TO ARCHITECTURAL/STRUCTURAL DRAWINGS BY OTHERS.
2. ALL SCAFFOLDS SHALL MATCH PROPOSED CAPACITY BY RC GROUP, LLC DRAWINGS.

LATERAL BRACING BY MEADOW BURKE.

1. BRACE TYPE SUPER 17 W/ 17 KIPS LOAD CAPACITY
2. BRACE TYPE SUPER 22 W/ EXTENSION W/ 8.85 KIPS LOAD CAPACITY
3. SHORING MUST BE INSPECTED.
4. THE CONTRACTOR SHOULD FOLLOW THE SUPPLIES RECOMMENDATIONS FOR SAFETY AND EXECUTION

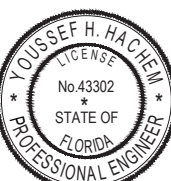


Digitally signed by Youssef H Hachem
DN: cn=Youssef H Hachem,
o=RC GROUP, ou=1600000010C833CDD0940012794F,
c=US
Date: 2024.10.10 17:06:54 -0400



YOUSSEF HACHEM
CONSULTING ENGINEERING, INC.
CA 26553

89 NW 27 AVE
MIAMI, FL 33125
TEL (786) 287-9120
FAX (305) 969-9453
www.yhengineering.com



YOUSSEF HACHEM, Ph.D., P.E.
No. 43302

*PRELIMINARY SET NOT FOR CONSTRUCTION PURPOSE:

NR
architect

NORBERTO ROSENSTEIN
ARCHITECT , INC.

ARCHITECTURE - INTERIOR DESIGN - PLANNING

126 S. FEDERAL HIGHWAY SUITE #202
DANIA BEACH, FLORIDA 33004
P: (954) 922-6551
NROSENSTEIN@ROSENSTEINARCHITECT.COM
WWW.ROSENSTEINARCHITECT.COM

STATE REG. NO. AROO16674
NATL. REG. NO. 69178
COPYRIGHT © 2024
NORBERTO ROSENSTEIN
ARCHITECT, INC.
ALL RIGHTS RESERVED. THIS
DOCUMENT OR PARTS THEREOF,
MAY NOT BE REPRODUCED IN ANY
FORM WITHOUT PERMISSION.

| DESIGNED | DRAWN | CHECKED |
|----------|-------|---------|
| | | |

I HEREBY CERTIFY THAT THESE
PLANS WERE PREPARED BY ME
OR UNDER
MY SUPERVISION, AND TO THE
BEST OF MY KNOWLEDGE,
COMPLY WITH ALL APPLICABLE
CODES.

| | | |
|--|--|--|
| | | |
| | | |
| | | |
| | | |
| | | |
| | | |

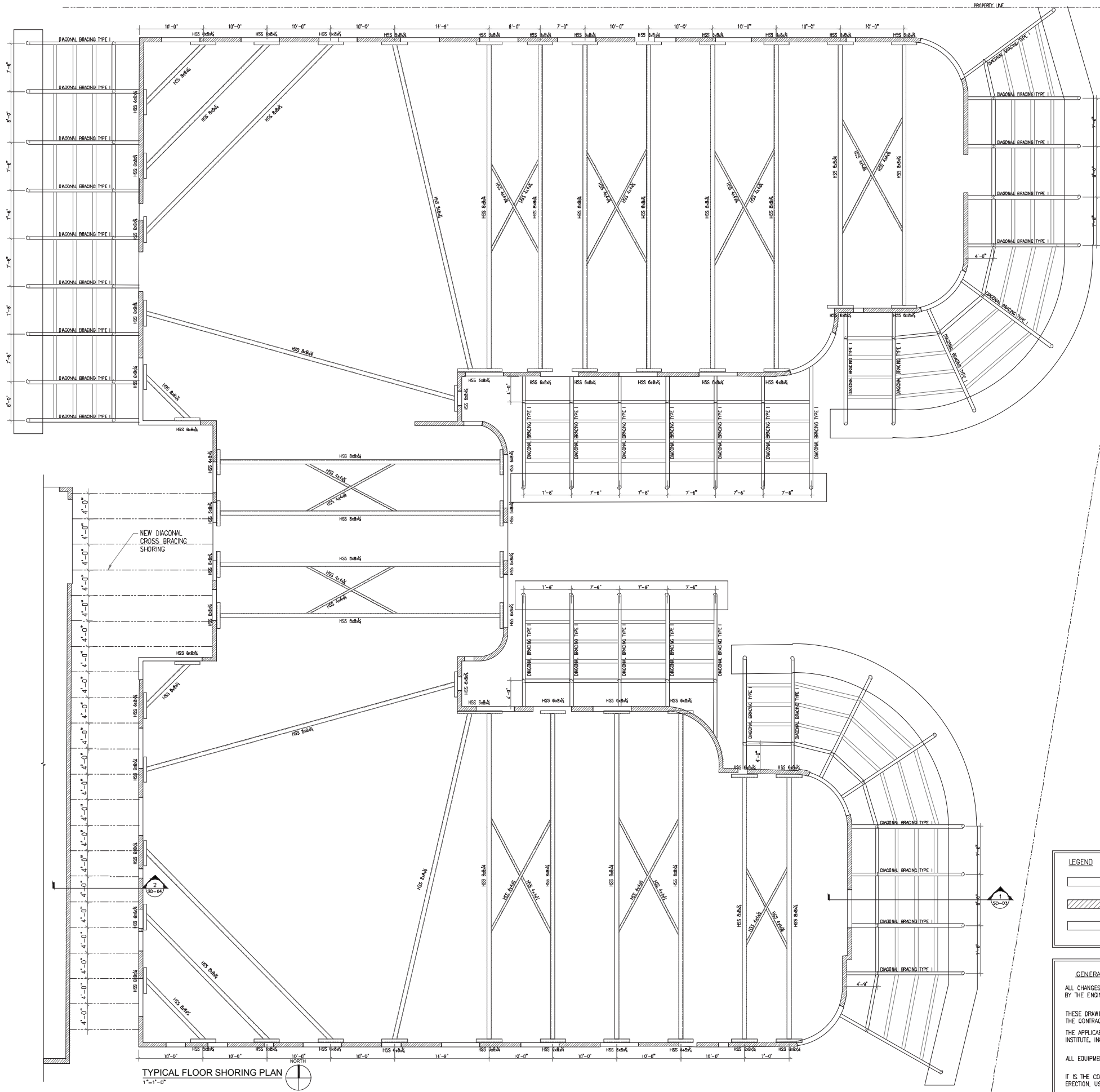
| REVISIONS | |
|-----------|------|
| COMM. | DATE |
| | |

TREEHOUSE HOTEL,
MIAMI BEACH

1500 COLLINS +
1509-1515 WASHINGTON
AVE, MIAMI BEACH, FL,
33139

GENERAL NOTES & DWG.
INDEX

SD-01



TYPICAL FLOOR SHORING PLAN
1"=1'-0"

LEGEND

- [Symbol] DENOTES AN EXISTING KNEE WALL TO REMAIN
- [Symbol] DENOTES AN EXISTING WALL TO REMAIN
- [Symbol] DENOTES NEW DEADMAN 54"x48" CONF.

GENERAL NOTES

ALL CHANGES IN THE DRAWING LAYOUT AND SPECIFICATIONS MUST BE APPROVED BY THE ENGINEER.

THESE DRAWINGS HAVE BEEN PREPARED BASED ON INFORMATION FURNISHED BY THE CONTRACTOR.

THE APPLICABLE RECOMMENDED PRACTICES OF THE SHORING AND FORMING INSTITUTE, INC. AND OSHA SHALL BE FOLLOWED.

ALL EQUIPMENT MUST BE ERECTED PLUMB AND LEVEL.

IT IS THE CONTRACTOR'S RESPONSIBILITY FOR SAFETY REQUIREMENTS DURING ERECTION, USE AND DISMANTLING OF ASSEMBLY.



PHOTO #1-EXTERIOR SHORING
N.T.S



PHOTO #2- EXTERIOR SHORING
N.T.S

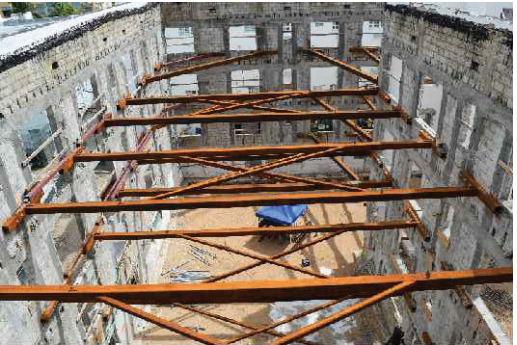


PHOTO #3- INTERIOR SHORING
N.T.S

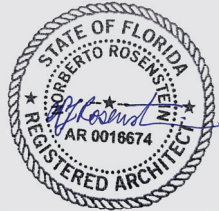
YOUSSEF H. HACHEM
LICENSE
No. 43302
STATE OF FLORIDA
PROFESSIONAL ENGINEER

Digitally signed by Youssef H Hachem
DN: cn=Youssef H Hachem,
email=youssef.hachem@hce-engineering.com, o=HCE ENGINEERING, c=US
Date: 2024.10.16 17:07:00-0400

HCE
YOUSSEF HACHEM
CONSULTING ENGINEERING, INC.
CA 26553

99 NW 27 AVE
MIAMI, FL 33125
(786) 287-9120
(305) 969-9453
www.yhengineering.com

YOUSSEF HACHEM, Ph.D., P.E.
No. 43302



NR
architect

NORBERTO ROSENSTEIN
ARCHITECT, INC.

ARCHITECTURE - INTERIOR DESIGN - PLANNING
126 S. FEDERAL HIGHWAY SUITE #202
DANIA BEACH, FLORIDA 33004
P: (954) 922-6551
NROSENSTEIN@ROSENSTEINARCHITECT.COM
WWW.ROSENSTEINARCHITECT.COM

STATE REG. NO. ARO016674
NATL. REG. NO. 69178
COPYRIGHT © 2024
NORBERTO ROSENSTEIN
ARCHITECT, INC.
ALL RIGHTS RESERVED. THIS
DOCUMENT OR PARTS THEREOF,
MAY NOT BE REPRODUCED IN ANY
FORM WITHOUT PERMISSION.

| DESIGNED | DRAWN | CHECKED |
|----------|-------|---------|
| | | |

I HEREBY CERTIFY THAT THESE
PLANS WERE PREPARED BY ME
OR UNDER
MY SUPERVISION, AND TO THE
BEST OF MY KNOWLEDGE,
COMPLY WITH ALL APPLICABLE
CODES.

| | | |
|--|--|--|
| | | |
| | | |
| | | |
| | | |
| | | |
| | | |

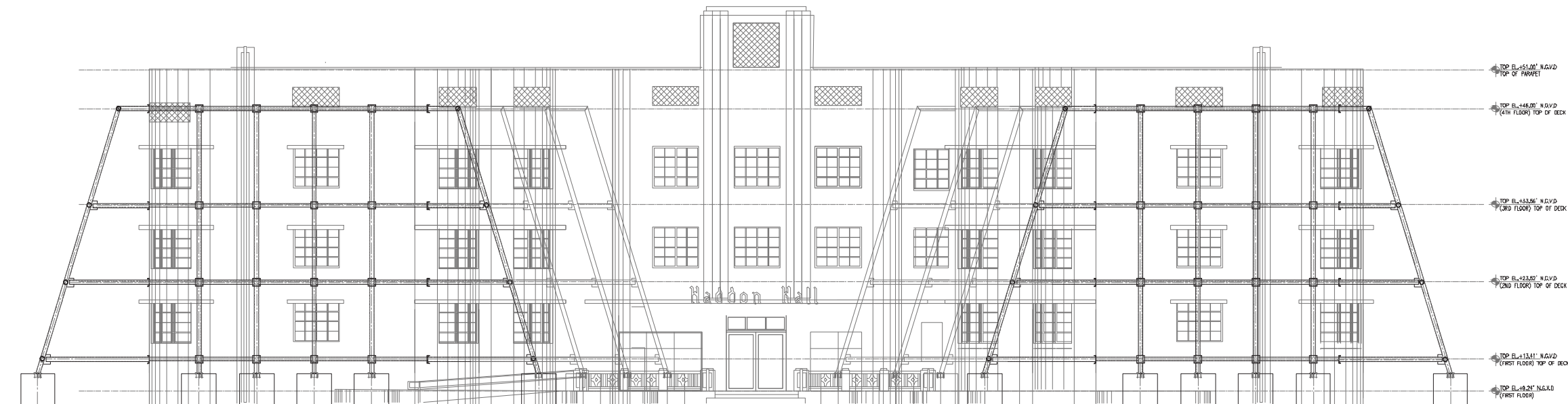
| REVISIONS | |
|-----------|------|
| COMM. | DATE |
| | |
| | |
| | |
| | |

TREEHOUSE HOTEL,
MIAMI BEACH

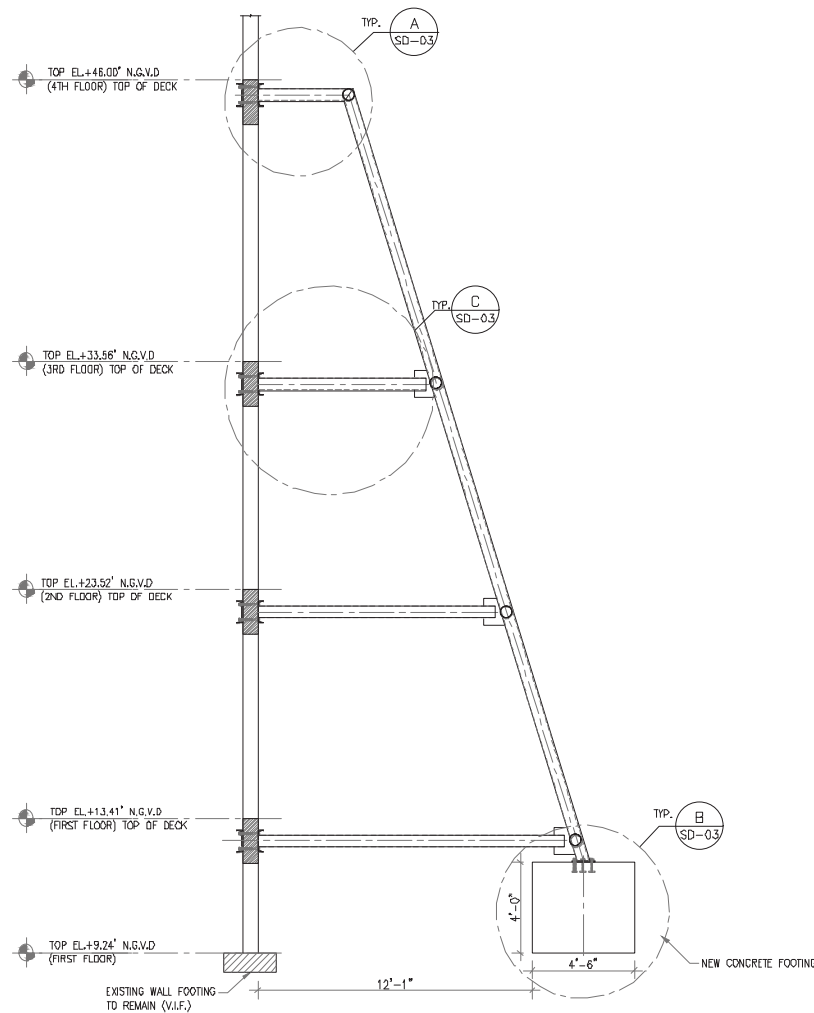
1500 COLLINS +
1509-1515 WASHINGTON
AVE, MIAMI BEACH, FL,
33139

HADDON HALL TYPICAL
FLOOR SHORING PLAN

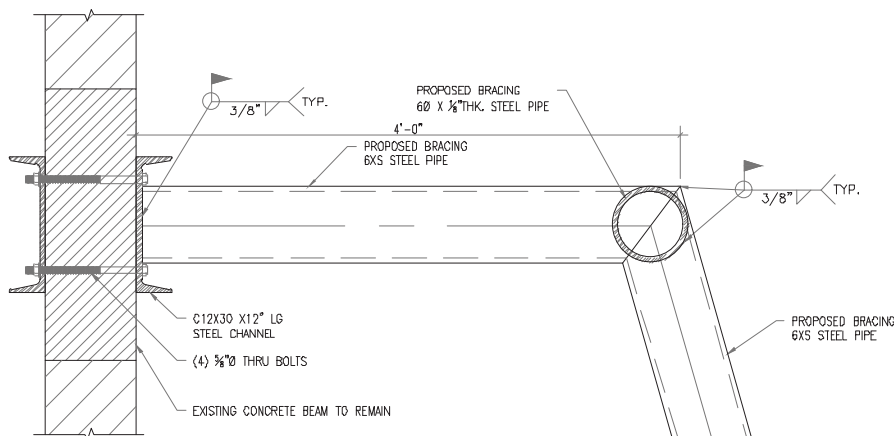
SD-02



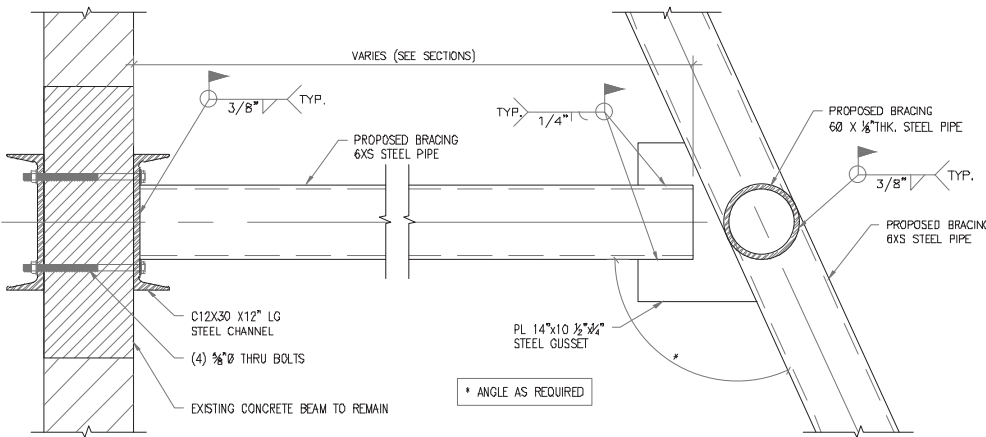
EAST SHORING ELEVATION
1/8"=1'-0"



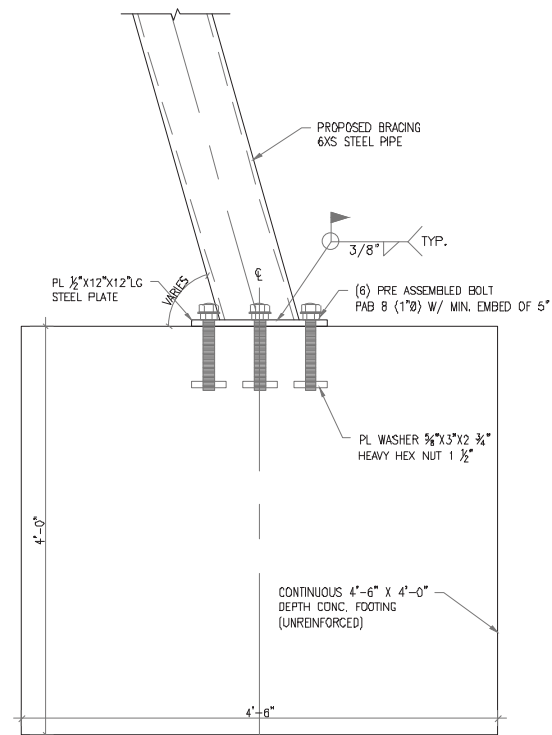
SECTION 1 /SD-02
1/4"=1'-0"



DETAIL A /SD-03
(DIAGONAL BRACING TYPE I)
1 1/2"=1'-0"



DETAIL C /SD-03
(TYP. MIDDLE CONNECTION)
1 1/2"=1'-0"



DETAIL B /SD-03
(FOOTING TYP. DETAIL)
1 1/2"=1'-0"



Digitally signed by Youssef H Hachem
DN: cn=Youssef H Hachem,
email=hachem@hachemengineering.com, o=HACHEM ENGINEERING, c=US
Date: 2024.10.10 17:07:06-0400

YOUSSEF HACHEM
CONSULTING ENGINEERING, INC.
CA 26553

99 NW 27 AVE
MIAMI, FL 33125
(786) 287-9120
(305) 969-9453
www.yhengineering.com

*PRELIMINARY SET NOT FOR CONSTRUCTION PURPOSE



NR
architect

NORBERTO ROSENSTEIN
ARCHITECT, INC.

ARCHITECTURE - INTERIOR DESIGN - PLANNING
126 S. FEDERAL HIGHWAY SUITE #202
DANIA BEACH, FLORIDA 33004
P: (954) 922-6551
NROSENSTEIN@ROSENSTEINARCHITECT.COM
WWW.ROSENSTEINARCHITECT.COM

STATE REG. NO. ARO016674
NATL. REG. NO. 69178
COPYRIGHT © 2024
NORBERTO ROSENSTEIN
ARCHITECT, INC.
ALL RIGHTS RESERVED. THIS
DOCUMENT OR PARTS THEREOF,
MAY NOT BE REPRODUCED IN ANY
FORM WITHOUT PERMISSION.

| DESIGNED | DRAWN | CHECKED |
|----------|-------|---------|
| | | |

I HEREBY CERTIFY THAT THESE
PLANS WERE PREPARED BY ME
OR UNDER
MY SUPERVISION, AND TO THE
BEST OF MY KNOWLEDGE,
COMPLY WITH ALL APPLICABLE
CODES.

| | | |
|--|--|--|
| | | |
| | | |
| | | |
| | | |
| | | |
| | | |

REVISIONS

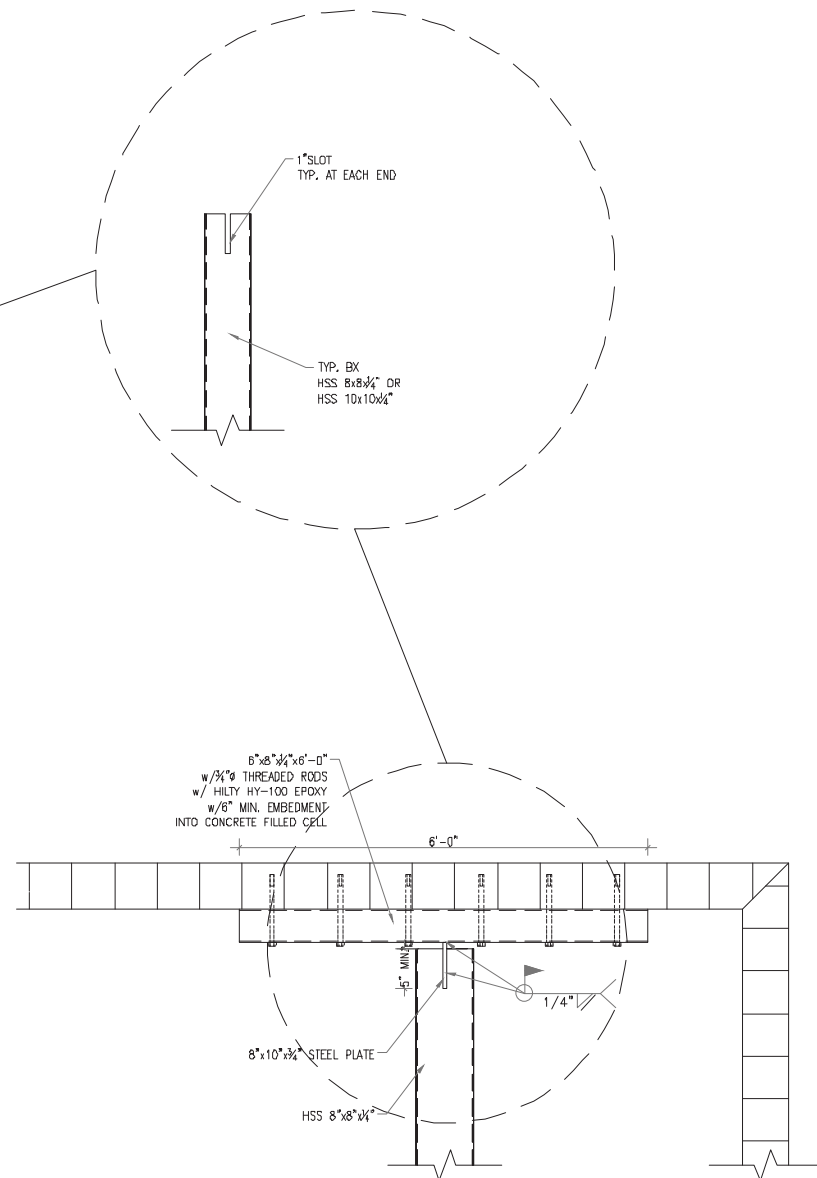
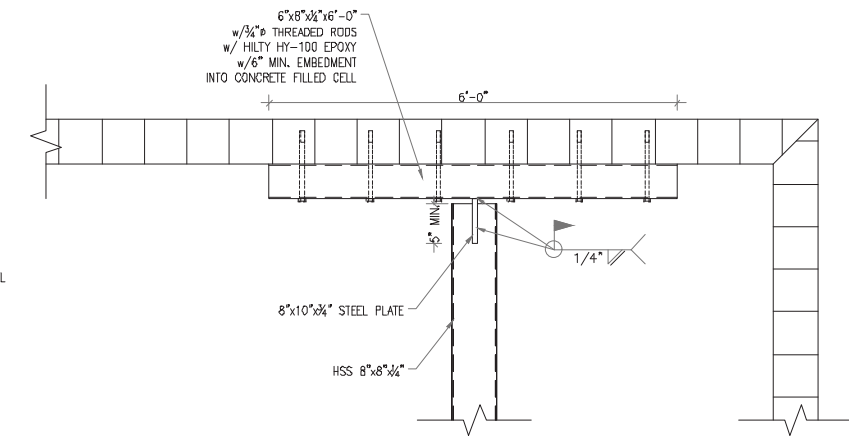
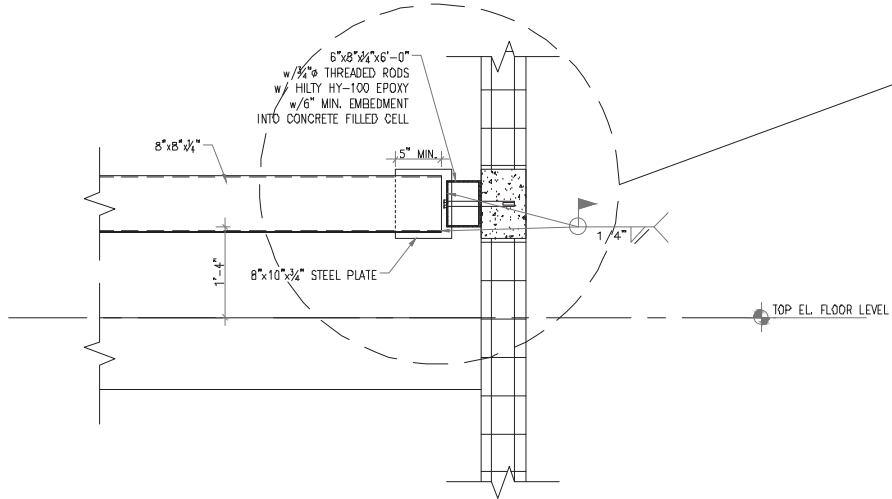
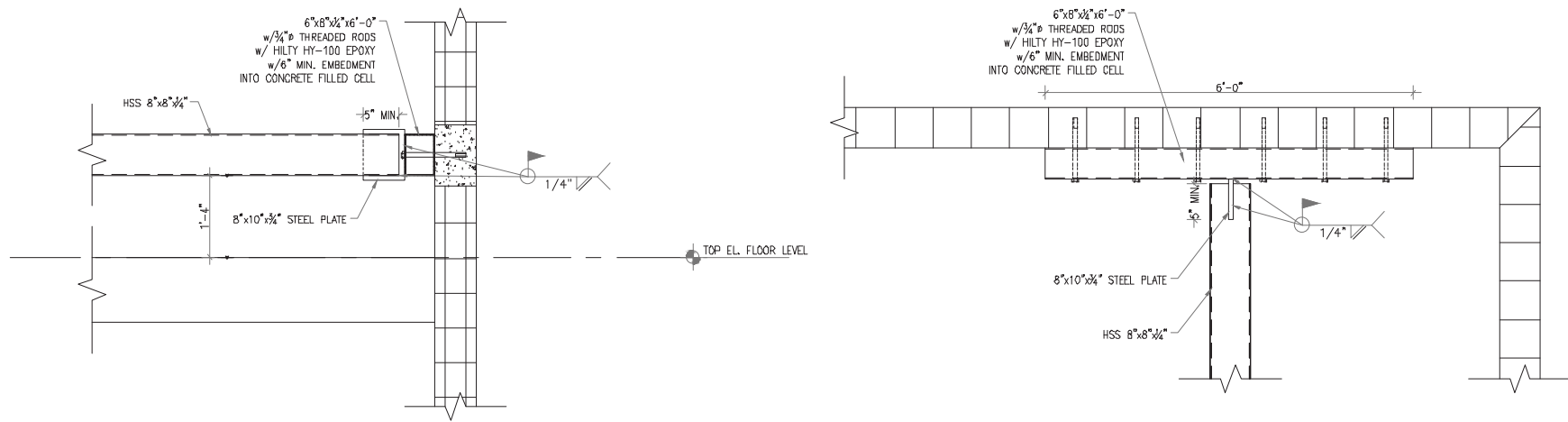
| COMM. | DATE |
|-------|------|
| | |

TREEHOUSE HOTEL,
MIAMI BEACH

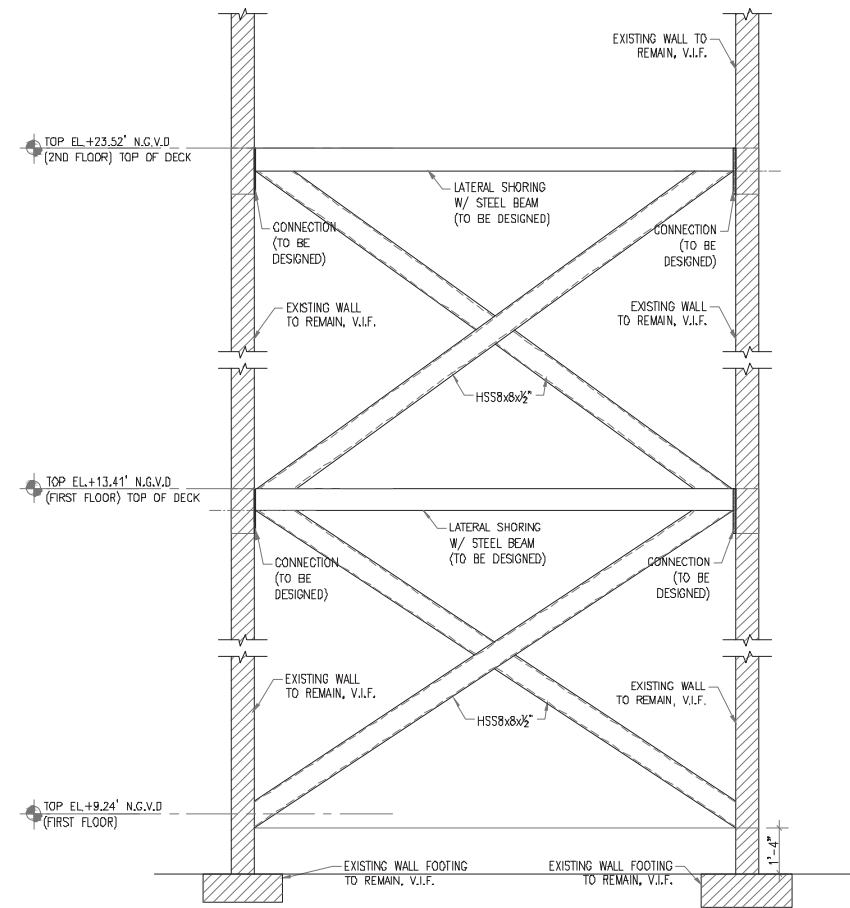
1500 COLLINS +
1509-1515 WASHINGTON
AVE, MIAMI BEACH, FL,
33139

HADDON HALL SHORING
ELEVATION & SECTIONS

SD-03



TYP. WALL CONNECTION DETAIL
1"=1'-0"



SECTION 2/SD-02
3/8"=1'-0"



YOUSSEF H. HACHEM
CONSULTING ENGINEERING, INC.
CA 26553
99 NW 27 AVE
MIAMI, FL 33125
(786) 287-9120
(305) 969-9453
www.yhengineering.com

YOUSSEF H. HACHEM
LICENSE
No. 43302
STATE OF
FLORIDA
PROFESSIONAL ENGINEER
No. 43302

*PRELIMINARY SET NOT FOR CONSTRUCTION PURPOSE



NR
architect

NORBERTO ROSENSTEIN
ARCHITECT, INC.

ARCHITECTURE - INTERIOR DESIGN - PLANNING
126 S. FEDERAL HIGHWAY SUITE #202
DANIA BEACH, FLORIDA 33004
P: (954) 922-6551
NROSENSTEIN@ROSENSTEINARCHITECT.COM
WWW.ROSENSTEINARCHITECT.COM

STATE REG. NO. AR0016674
NATL. REG. NO. 69178
COPYRIGHT © 2024
NORBERTO ROSENSTEIN
ARCHITECT, INC.
ALL RIGHTS RESERVED. THIS
DOCUMENT OR PARTS THEREOF,
MAY NOT BE REPRODUCED IN ANY
FORM WITHOUT PERMISSION.

| DESIGNED | DRAWN | CHECKED |
|----------|-------|---------|
| | | |

I HEREBY CERTIFY THAT THESE
PLANS WERE PREPARED BY ME
OR UNDER
MY SUPERVISION, AND TO THE
BEST OF MY KNOWLEDGE,
COMPLY WITH ALL APPLICABLE
CODES.

| | | |
|--|--|--|
| | | |
| | | |
| | | |
| | | |
| | | |
| | | |
| | | |
| | | |

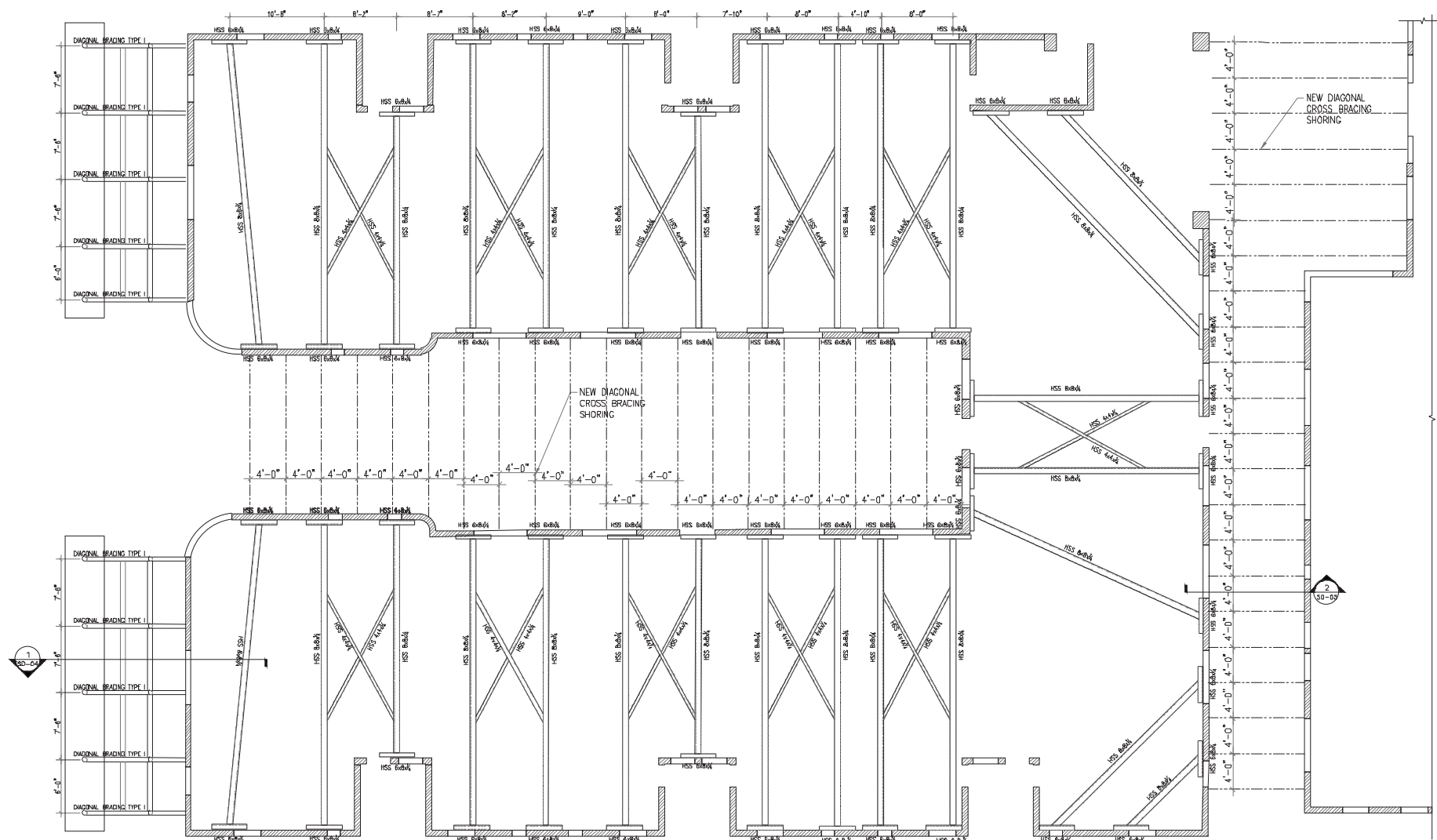
| REVISIONS | |
|-----------|------|
| COMM. | DATE |
| | |

TREEHOUSE HOTEL,
MIAMI BEACH

1500 COLLINS +
1509-1515 WASHINGTON
AVE, MIAMI BEACH, FL,
33139

HADDON HALL
SECTION & DETAILS

SD-04



FIRST FLOOR SHORING PLAN
1"=1'-0"



PHOTO #1-EXTERIOR SHORING
N.T.S



PHOTO #2- EXTERIOR SHORING
N.T.S

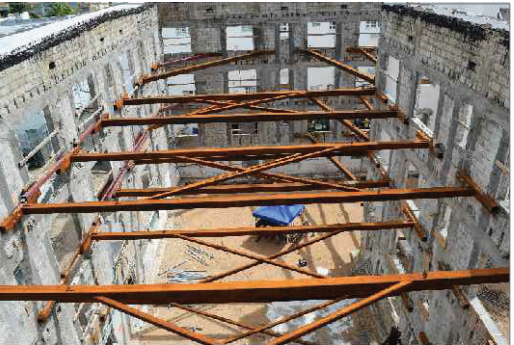


PHOTO #3- INTERIOR SHORING
N.T.S

LEGEND

- DENOTES AN EXISTING KNEE WALL TO REMAIN
- DENOTES AN EXISTING WALL TO REMAIN
- DENOTES NEW DEADMAN 54"x48" CONF.

GENERAL NOTES

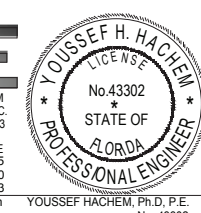
ALL CHANGES IN THE DRAWING LAYOUT AND SPECIFICATIONS MUST BE APPROVED BY THE ENGINEER.

THESE DRAWINGS HAVE BEEN PREPARED BASED ON INFORMATION FURNISHED BY THE CONTRACTOR.

THE APPLICABLE RECOMMENDED PRACTICES OF THE SHORING AND FORMING INSTITUTE, INC. AND OSHA SHALL BE FOLLOWED.

ALL EQUIPMENT MUST BE ERECTED PLUMB AND LEVEL.

IT IS THE CONTRACTOR'S RESPONSIBILITY FOR SAFETY REQUIREMENTS DURING ERECTION, USE AND DISMANTLING OF ASSEMBLY.



*PRELIMINARY SET NOT FOR CONSTRUCTION PURPOSE



NR
architect

NORBERTO ROSENSTEIN
ARCHITECT, INC.

ARCHITECTURE - INTERIOR DESIGN - PLANNING
126 S. FEDERAL HIGHWAY SUITE #202
DANIA BEACH, FLORIDA 33004
P: (954) 922-6551
NROSENSTEIN@ROSENSTEINARCHITECT.COM
WWW.ROSENSTEINARCHITECT.COM

STATE REG. NO. ARO016674
NATL. REG. NO. 69178
COPYRIGHT © 2024
NORBERTO ROSENSTEIN
ARCHITECT, INC.
ALL RIGHTS RESERVED. THIS
DOCUMENT OR PARTS THEREOF,
MAY NOT BE REPRODUCED IN ANY
FORM WITHOUT PERMISSION.

| DESIGNED | DRAWN | CHECKED |
|----------|-------|---------|
| | | |

I HEREBY CERTIFY THAT THESE
PLANS WERE PREPARED BY ME
OR UNDER
MY SUPERVISION, AND TO THE
BEST OF MY KNOWLEDGE,
COMPLY WITH ALL APPLICABLE
CODES.

| | | |
|--|--|--|
| | | |
| | | |
| | | |
| | | |
| | | |
| | | |

REVISIONS

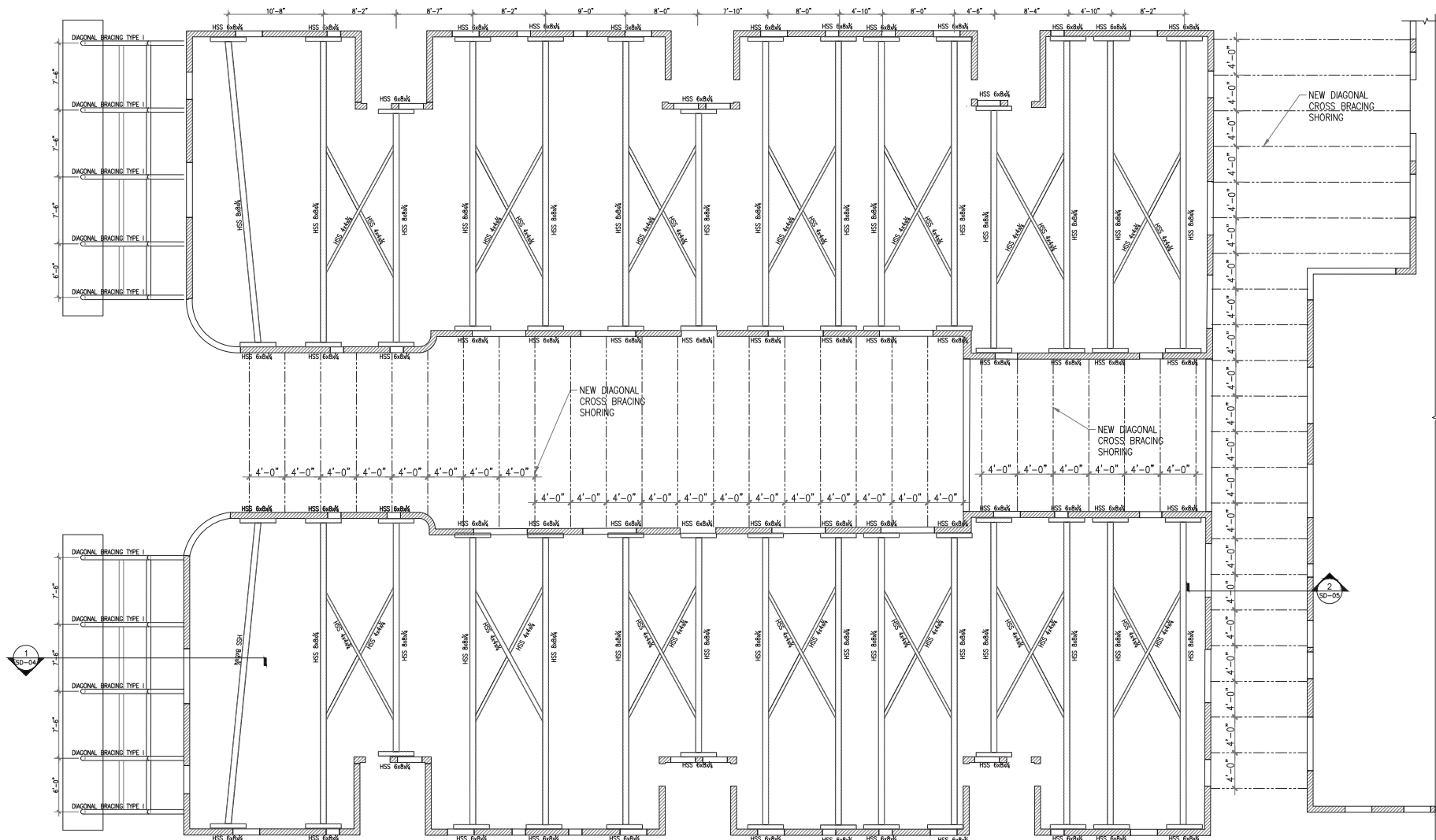
| COMM. | DATE |
|-------|------|
| | |

TREEHOUSE HOTEL,
MIAMI BEACH

1500 COLLINS +
1509-1515 WASHINGTON
AVE, MIAMI BEACH, FL,
33139

CAMPTON APT. FIRST
FLOOR SHORING PLAN

SD-05



SECOND FLOOR SHORING PLAN
1"=1'-0"



PHOTO #1-EXTERIOR SHORING
N.T.S



PHOTO #2- EXTERIOR SHORING
N.T.S

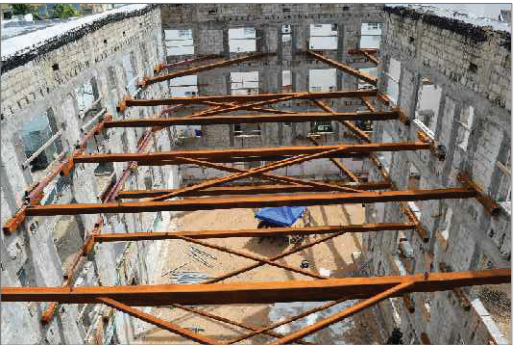


PHOTO #3- INTERIOR SHORING
N.T.S

LEGEND

- DENOTES AN EXISTING KNEE WALL TO REMAIN
- DENOTES AN EXISTING WALL TO REMAIN
- DENOTES NEW DEADMAN 54"x48" CONT.

GENERAL NOTES

ALL CHANGES IN THE DRAWING LAYOUT AND SPECIFICATIONS MUST BE APPROVED BY THE ENGINEER.

THESE DRAWINGS HAVE BEEN PREPARED BASED ON INFORMATION FURNISHED BY THE CONTRACTOR.

THE APPLICABLE RECOMMENDED PRACTICES OF THE SHORING AND FORMING INSTITUTE, INC. AND OSHA SHALL BE FOLLOWED.

ALL EQUIPMENT MUST BE ERECTED PLUMB AND LEVEL.

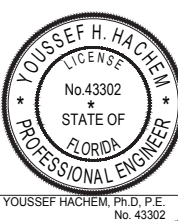
IT IS THE CONTRACTOR'S RESPONSIBILITY FOR SAFETY REQUIREMENTS DURING ERECTION, USE AND DISMANTLING OF ASSEMBLY.



Digitally signed by Youssef H Hachem
DN: cn=Youssef H Hachem,
o=YHCE, c=US
Date: 2024.10.10 17:06:36 -0400



89 NW 27 AVE
MIAMI, FL 33125
(786) 287-9120
(305) 969-9453
www.yhengineering.com



*PRELIMINARY SET NOT FOR CONSTRUCTION PURPOSE



NR
architect

NORBERTO ROSENSTEIN
ARCHITECT, INC.

ARCHITECTURE - INTERIOR DESIGN - PLANNING

126 S. FEDERAL HIGHWAY SUITE #202

DANIA BEACH, FLORIDA 33004

P: (954) 922-6551

NROSENSTEIN@ROSENSTEINARCHITECT.COM

WWW.ROSENSTEINARCHITECT.COM

STATE REG. NO. ARO016674

NATL. REG. NO. 69178

COPYRIGHT © 2024

NORBERTO ROSENSTEIN

ARCHITECT, INC.

ALL RIGHTS RESERVED. THIS

DOCUMENT OR PARTS THEREOF,

MAY NOT BE REPRODUCED IN ANY

FORM WITHOUT PERMISSION.

DESIGNED DRAWN CHECKED

REVISIONS

COMM. DATE

TREEHOUSE HOTEL,

MIAMI BEACH

1500 COLLINS +

1509-1515 WASHINGTON

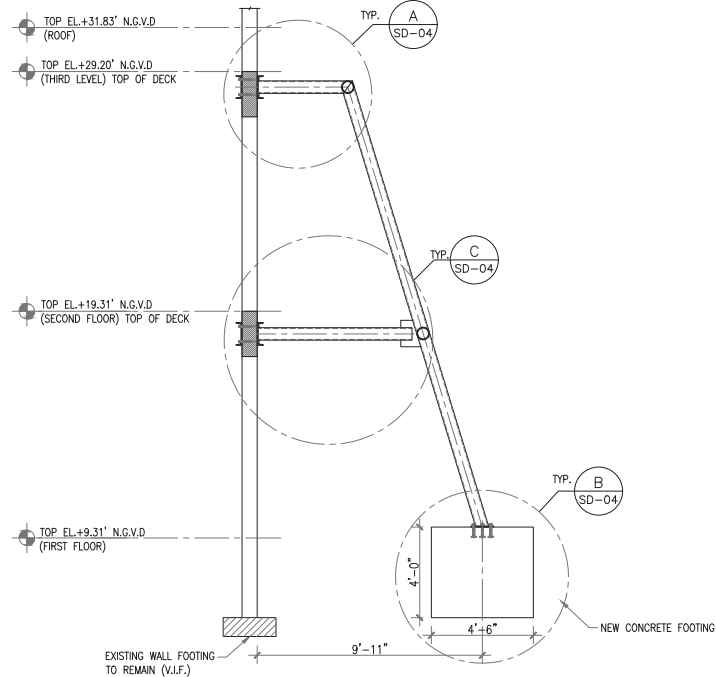
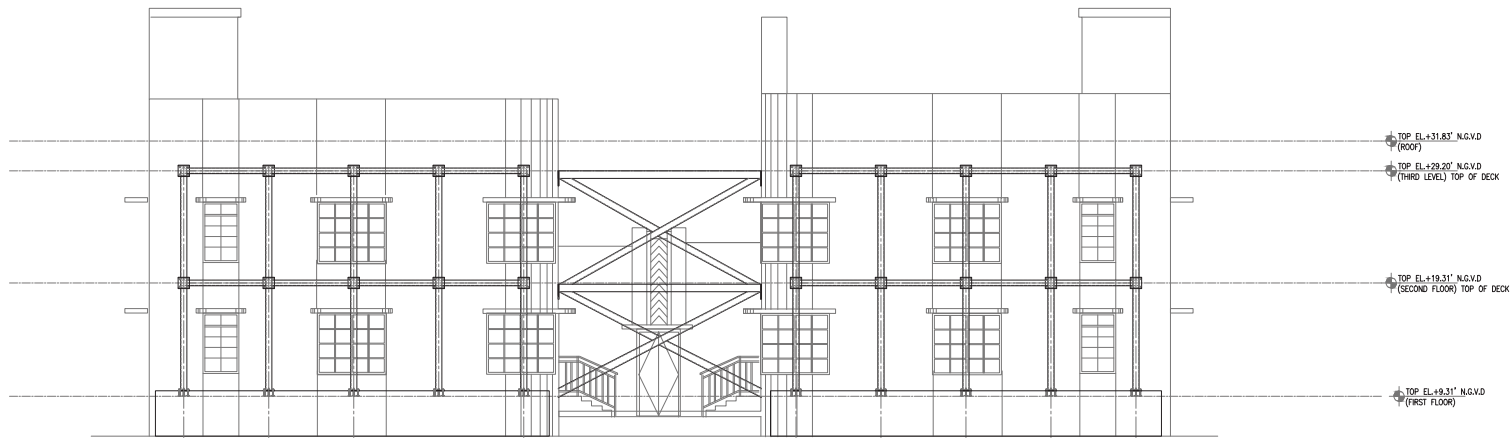
AVE, MIAMI BEACH, FL,

33139

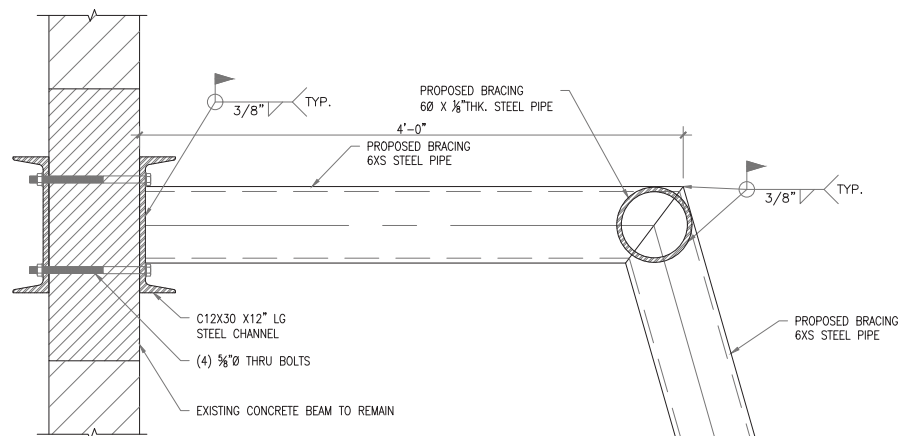
CAMPTON APT. SECOND

FLOOR SHORING PLAN

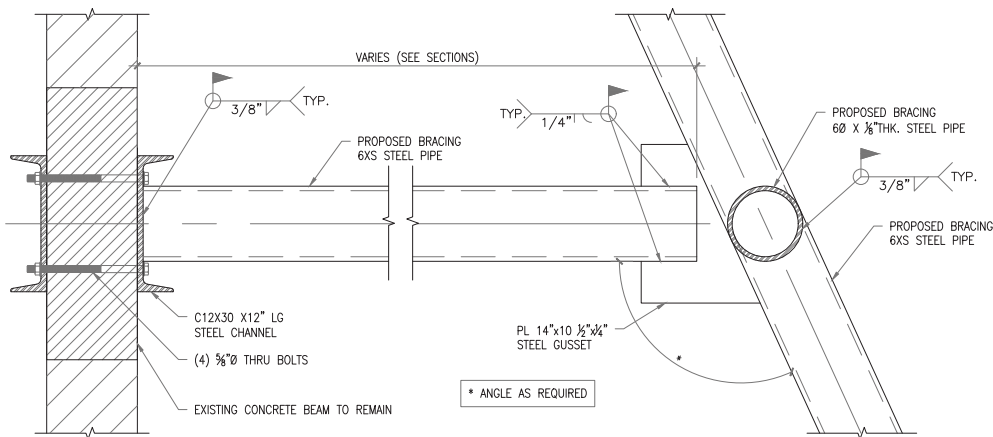
SD-06



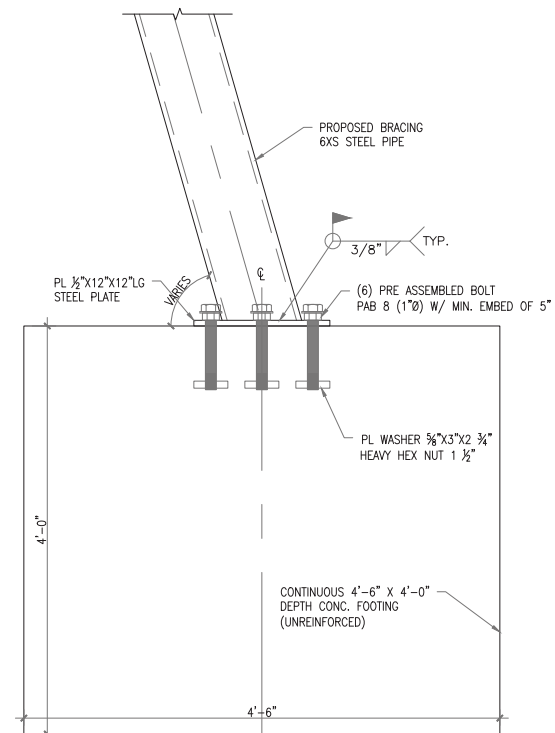
SECTION 1 /SD-02
1/4"=1'-0"



DETAIL A /SD-04
(DIAGONAL BRACING TYPE I)
1 1/2"=1'-0"



DETAIL C /SD-04
(TYP. MIDDLE CONNECTION)
1 1/2"=1'-0"



DETAIL B /SD-04
(FOOTING TYP. DETAIL)
1 1/2"=1'-0"



Digitally signed by Youssef H Hachem
DN: cn=Youssef H Hachem,
email=hachem@yhengineering.com, o=YH&E, c=US
Date: 2024.10.10 17:06:42-0400

YH&E
YOUSSEF HACHEM
CONSULTING ENGINEERING, INC.
CA 20553
89 NW 27 AVE
MIAMI, FL 33125
(786) 287-9120
(305) 969-9453
www.yhengineering.com

YOUSSEF H. HACHEM
LICENSE
No. 43302
STATE OF
FLORIDA
PROFESSIONAL ENGINEER
YOUSSEF HACHEM, Ph.D., P.E.
No. 43302

*PRELIMINARY SET NOT FOR CONSTRUCTION PURPOSE



NR
architect

NORBERTO ROSENSTEIN
ARCHITECT, INC.
ARCHITECTURE - INTERIOR DESIGN - PLANNING
126 S. FEDERAL HIGHWAY SUITE #202
DANIA BEACH, FLORIDA 33004
P: (954) 922-6551
NROSENSTEIN@ROSENSTEINARCHITECT.COM
WWW.ROSENSTEINARCHITECT.COM

STATE REG. NO. ARO016674
NATL. REG. NO. 69178
COPYRIGHT © 2024
NORBERTO ROSENSTEIN
ARCHITECT, INC.
ALL RIGHTS RESERVED. THIS
DOCUMENT OR PARTS THEREOF,
MAY NOT BE REPRODUCED IN ANY
FORM WITHOUT PERMISSION.

| DESIGNED | DRAWN | CHECKED |
|----------|-------|---------|
| | | |

I HEREBY CERTIFY THAT THESE
PLANS WERE PREPARED BY ME
OR UNDER
MY SUPERVISION, AND TO THE
BEST OF MY KNOWLEDGE,
COMPLY WITH ALL APPLICABLE
CODES.

| | | |
|--|--|--|
| | | |
| | | |
| | | |
| | | |
| | | |
| | | |

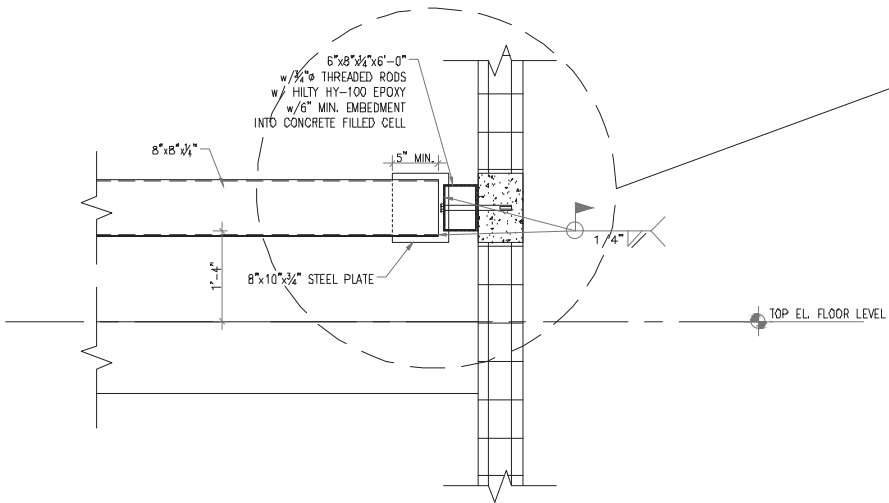
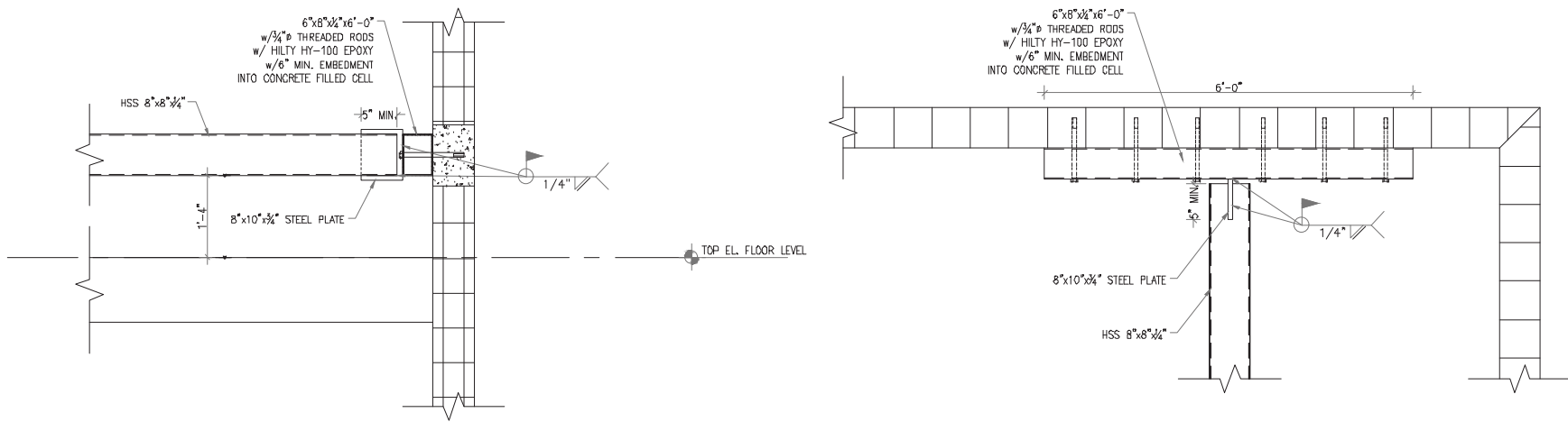
| REVISIONS | |
|-----------|------|
| COMM. | DATE |
| | |

TREEHOUSE HOTEL,
MIAMI BEACH

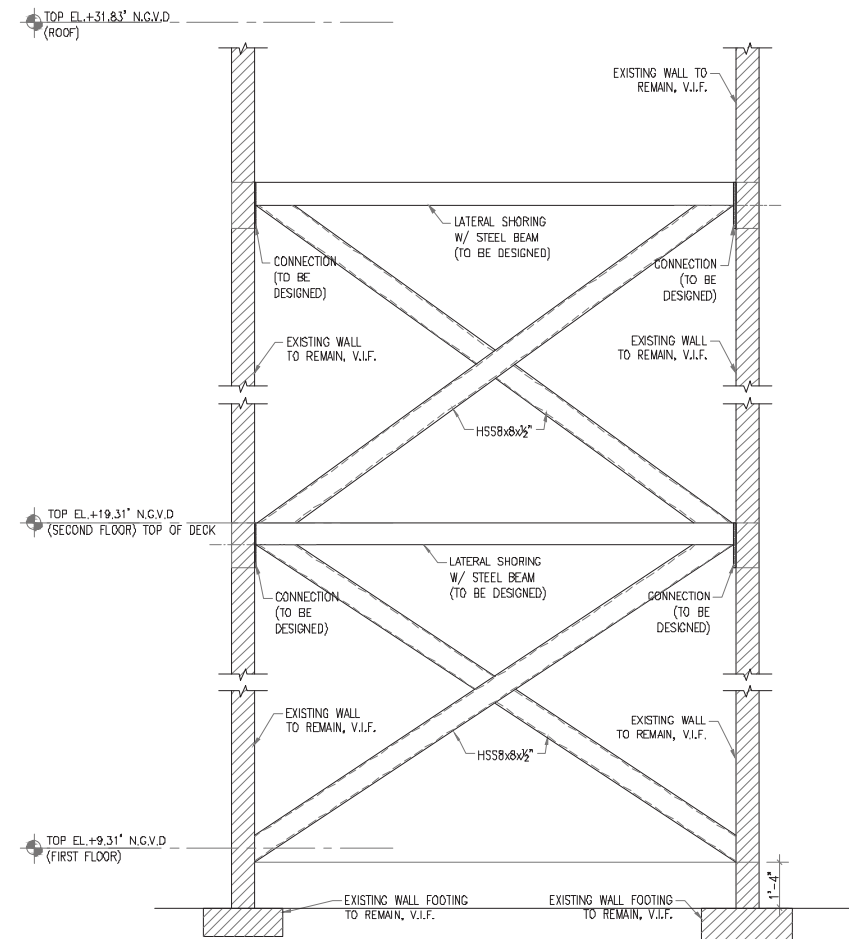
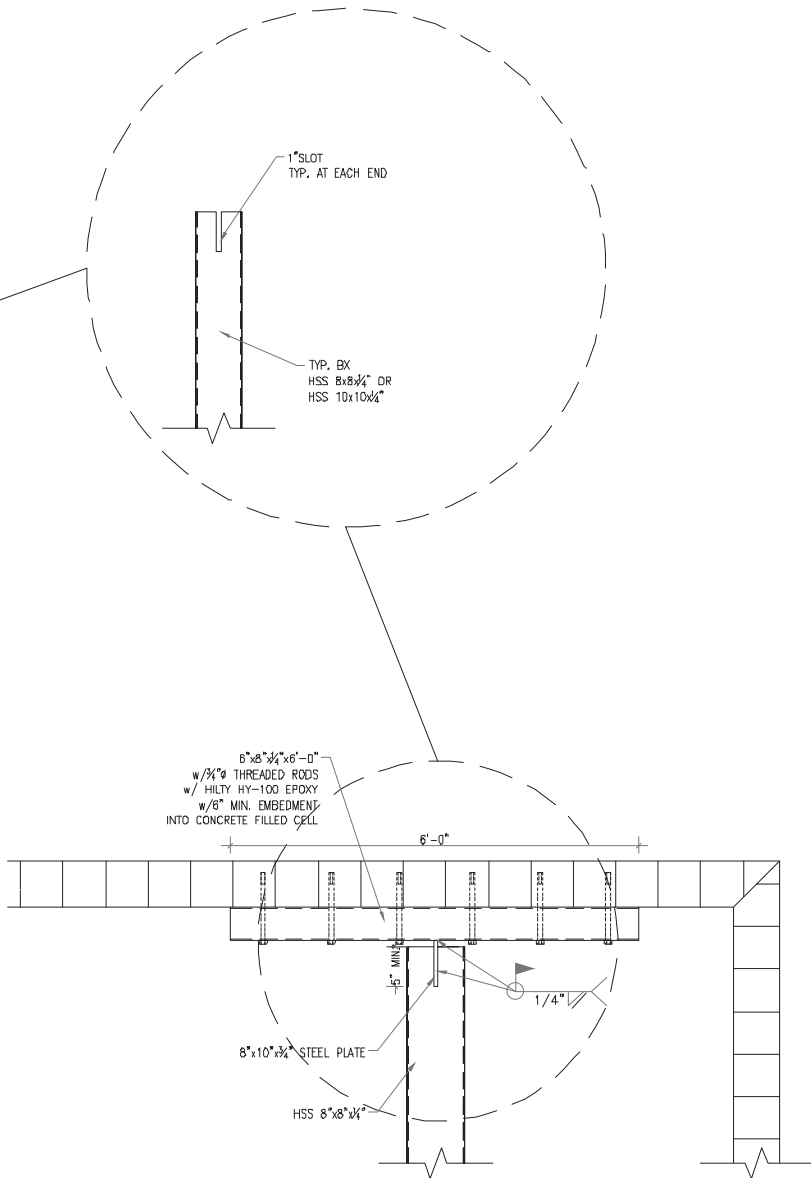
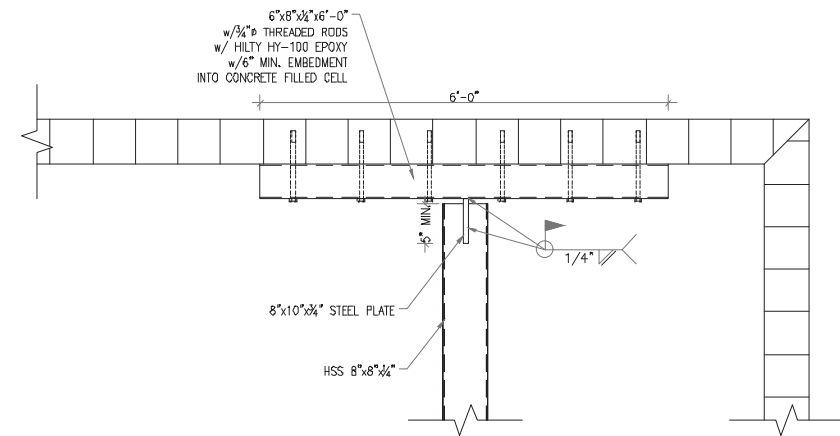
1500 COLLINS +
1509-1515 WASHINGTON
AVE, MIAMI BEACH, FL,
33139

CAMPTON APT. SHORING
ELEVATION & SECTIONS

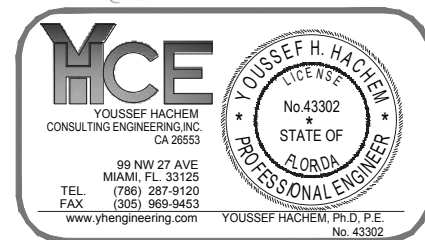
SD-07



TYP. WALL CONNECTION DETAIL
1"=1'-0"



SECTION 2/SD-02
3/8"=1'-0"



*PRELIMINARY SET NOT FOR CONSTRUCTION PURPOSE



NR
architect

**NORBERTO ROSENSTEIN
ARCHITECT, INC.**

ARCHITECTURE - INTERIOR DESIGN - PLANNING
126 S. FEDERAL HIGHWAY SUITE #202
DANIA BEACH, FLORIDA 33004
P: (954) 922-6551
NROSENSTEIN@ROSENSTEINARCHITECT.COM
WWW.ROSENSTEINARCHITECT.COM

STATE REG. NO. ARO016674
NATL. REG. NO. 69178
COPYRIGHT © 2024
NORBERTO ROSENSTEIN
ARCHITECT, INC.
ALL RIGHTS RESERVED. THIS
DOCUMENT OR PARTS THEREOF,
MAY NOT BE REPRODUCED IN ANY
FORM WITHOUT PERMISSION.

| DESIGNED | DRAWN | CHECKED |
|----------|-------|---------|
| | | |

I HEREBY CERTIFY THAT THESE
PLANS WERE PREPARED BY ME
OR UNDER
MY SUPERVISION, AND TO THE
BEST OF MY KNOWLEDGE,
COMPLY WITH ALL APPLICABLE
CODES.

| | | |
|--|--|--|
| | | |
| | | |
| | | |
| | | |
| | | |
| | | |
| | | |
| | | |

REVISIONS

| COMM. | DATE |
|-------|------|
| | |

**TREEHOUSE HOTEL,
MIAMI BEACH**

**1500 COLLINS +
1509-1515 WASHINGTON
AVE, MIAMI BEACH, FL,
33139**

**CAMPTON APT.
SECTION & DETAILS**

SD-08