

LIGHTING AND SIDEWALK IMPROVEMENTS

CITY OF MIAMI BEACH

OCEAN DRIVE

Calvin, Giordano & Associates, Inc.



2 Concurrent projects:

IMPLEMENTING THE ADCD VISION PLAN (OCEAN DR. CORRIDOR AND LUMMUS PARK ENHANCEMENT PROJECT):

- sometimes referred to as the 'long-term' project
- "a complex, multi-year endeavor that involves comprehensive design, permitting and construction"
- the 'long-term' project requires evaluations of all 3 ADCD options for Ocean Drive to FIRST obtain approval from BOTH Miami-Dade County and the Florida Dept of Transportation on the selected traffic configuration
- once the traffic studies are completed and agency approvals are obtained, site design and site engineering can begin

LIGHTING AND SIDEWALK IMPROVEMENTS:

- sometimes referred to as the 'short-term' project
- replacement of existing sidewalks and lighting improvements
- focuses on the importance of lighting and sidewalk improvements to enhance safety, accessibility, and aesthetics, and seeks to advance these enhancements



Objectives - 'Short Term' project

1. **Replace existing sidewalks**
no impacts to traffic geometries, drainage patterns,
or underground infrastructure
2. **Propose options for lighting along the west side of Ocean Drive**



Design Considerations

1. Enhance Safety and Accessibility
2. Cost of Implementation
3. Cost of Maintenance
4. Ease of Repair and Longevity
5. Sensitivity to Local Businesses



Agenda

1. Discuss Paving Strategies and Approaches
2. Discuss the 'pros' and 'cons' of the various hardscape alternatives
3. Showcase proposed design options
4. Discuss lighting strategy for Ocean Drive



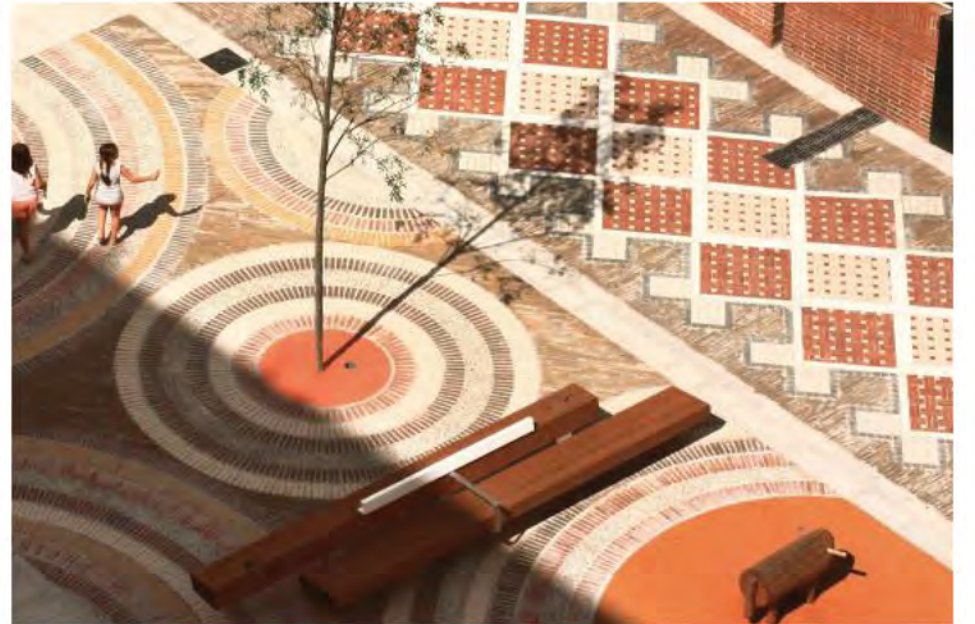
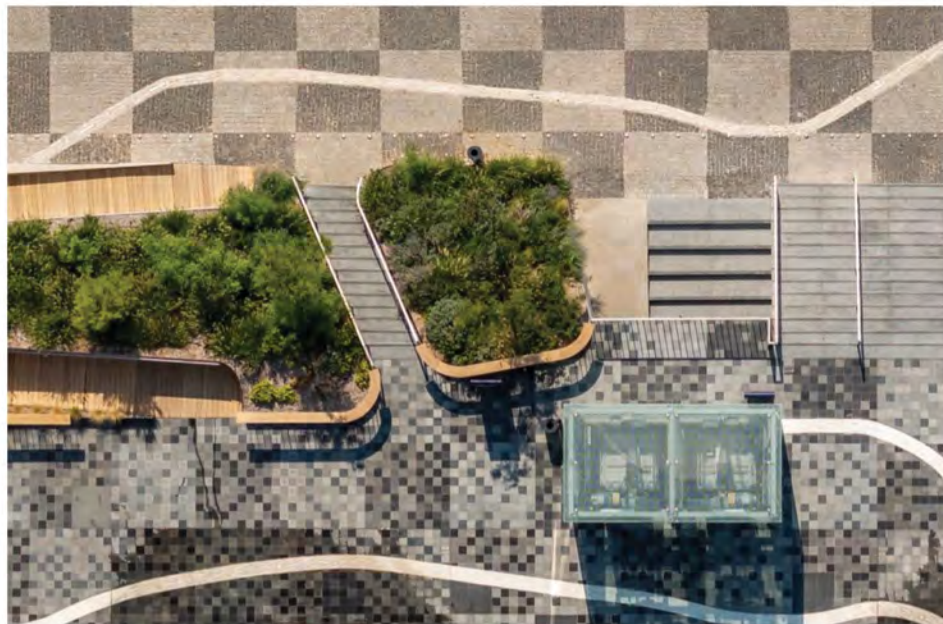
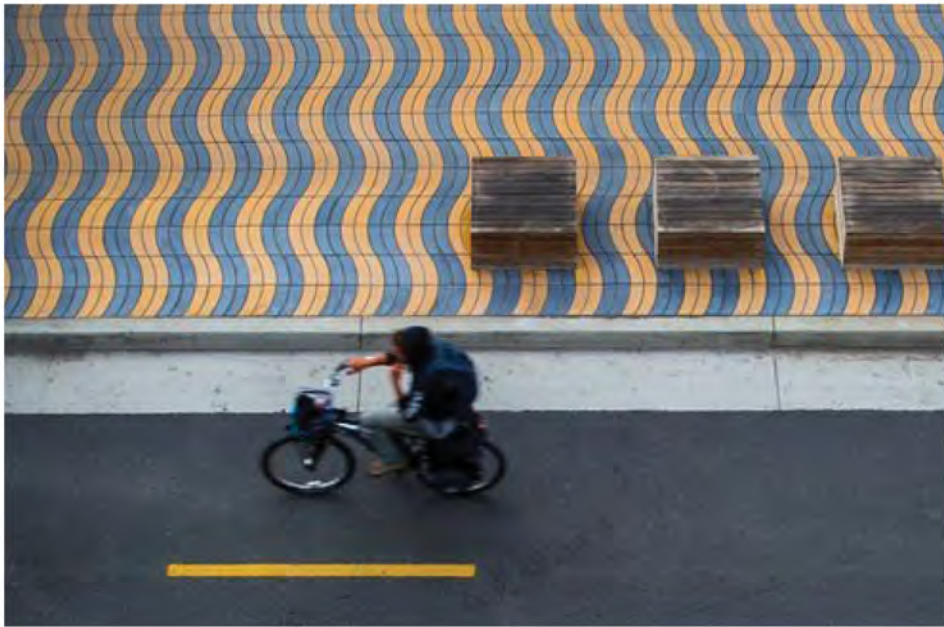
Basis of Design

01



Paving Strategies and Approaches





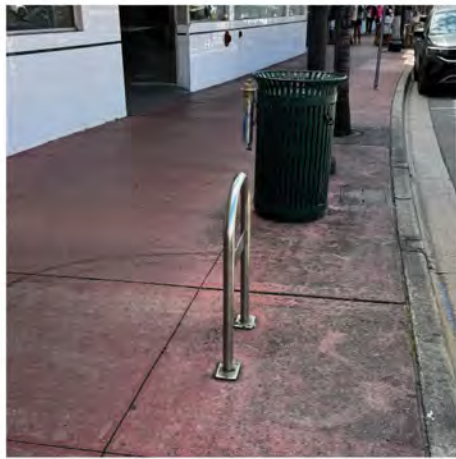
The Value of Paving Design



Paving Precedents - Local



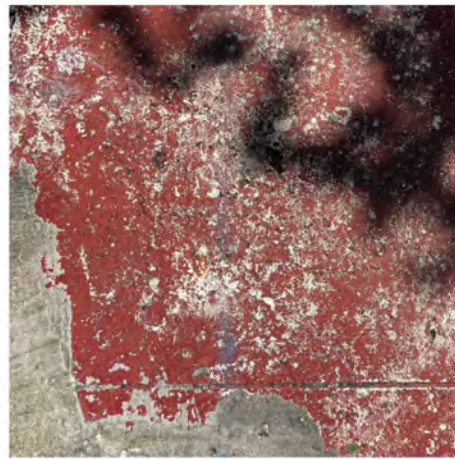
INTEGRAL COLOR
RED CONCRETE



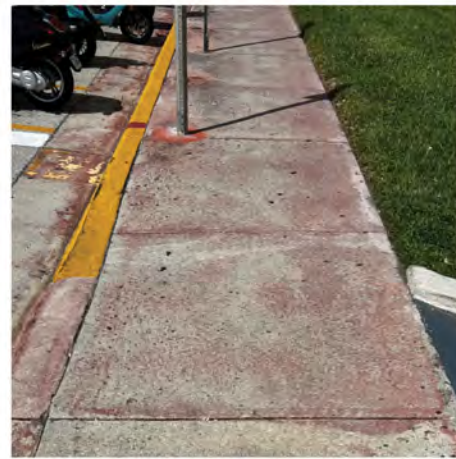
INTEGRAL COLOR
RED CONCRETE



INTEGRAL COLOR RED
CONCRETE WITH EXPOSED
SHELL AGGREGATE



NATURAL COLOR CONCRETE
WITH SURFACE PAINT



NATURAL COLOR CONCRETE
WITH SURFACE STAIN



NATURAL COLOR CONCRETE
SALT FINISH



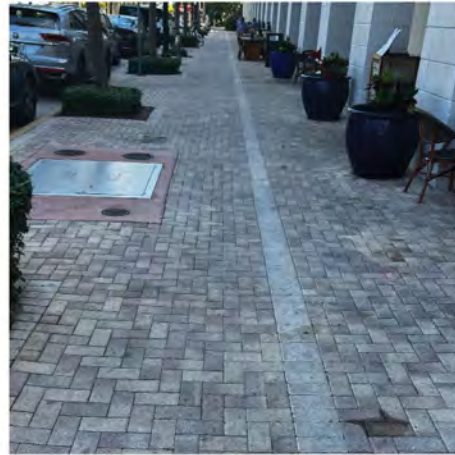
COBBLESTONE PAVER



INTEGRAL COLORED
CONCRETE PAVER



INTEGRAL COLORED
CONCRETE PAVER



INTEGRAL COLORED
CONCRETE PAVER



SQUARE GRANITE PAVER



PIEDRA PORTUGUESA

Paving Precedents - Local

‘Pros’ and ‘Cons’ of the various alternatives



INTEGRAL COLORED CONCRETE



- Most widely used material
- Can be colored (Integral color preferred)
- Easy to repair and replace
- Easy to maintain via pressure washing
- Most inexpensive of all options
- Relatively fast to install
- *Color will always fade, resulting in a patchwork when replaced*
- *Designs are subject to limitations of formwork*

EXPOSED SHELL CONCRETE



- Refined application and appearance
- Can be colored (Integral color preferred)
- Relatively easy to maintain via pressure washing
- *Requires skilled installers*
- *More difficult to repair and replace while keeping a seamless quality*
- *Color will always fade, resulting in a patchwork when replaced*
- *More prone to dirt accumulation*
- *Increased costs of installation*

Paving Alternatives



CONCRETE PAVERS



- Widely used and proven material throughout the City
- Available with exposed shell finish and in a variety of colors
- Relatively easy to maintain via pressure washing
- Generally repairs aren't needed for the first 5 years
- Can accommodate intricate designs
- Can be easily repaired by City Staff
- *Color will fade, resulting in a patchwork when replaced*
- *Excessively intricate designs can result in many 'cut' pieces*
- *Intricate designs need more maintenance*

COBBLESTONE



- Relatively easy to maintain via pressure washing
- Unique character that is more traditional & historic-leaning
- *Design options are more restrictive*
- *Material requires a lot of maintenance*
- *Staff has noted that it is very difficult to get repairs to be seamless*
- *Requires greater skill for repair*

PEDRA PORTUGUESA



- Intricate patterns can be achieved by varying the sizes of the stones
- Colors are limited to what can be supplied
- *Very difficult to repair and replace*
- *Requires highly-skilled installers to achieve seamless look*
- *Concerns about slip-and-fall due to the polished finish on the stone*
- *Large grout joints show patchwork where repairs are done*
- *Difficulty to achieve a smooth, flat surface for tables and chairs*
- *Very expensive*



CONCRETE PAVERS



- Widely used and proven material throughout the City
- Available with exposed shell finish and in a variety of colors
- Relatively easy to maintain via pressure washing
- Generally repairs aren't needed for the first 5 years
- Can accommodate intricate designs
- Can be easily repaired by City Staff
- *Color will fade, resulting in a patchwork when replaced*
- *Excessively intricate designs can result in many 'cut' pieces*
- *Intricate designs need more maintenance*



Material Recommendation



Proposed Alternatives

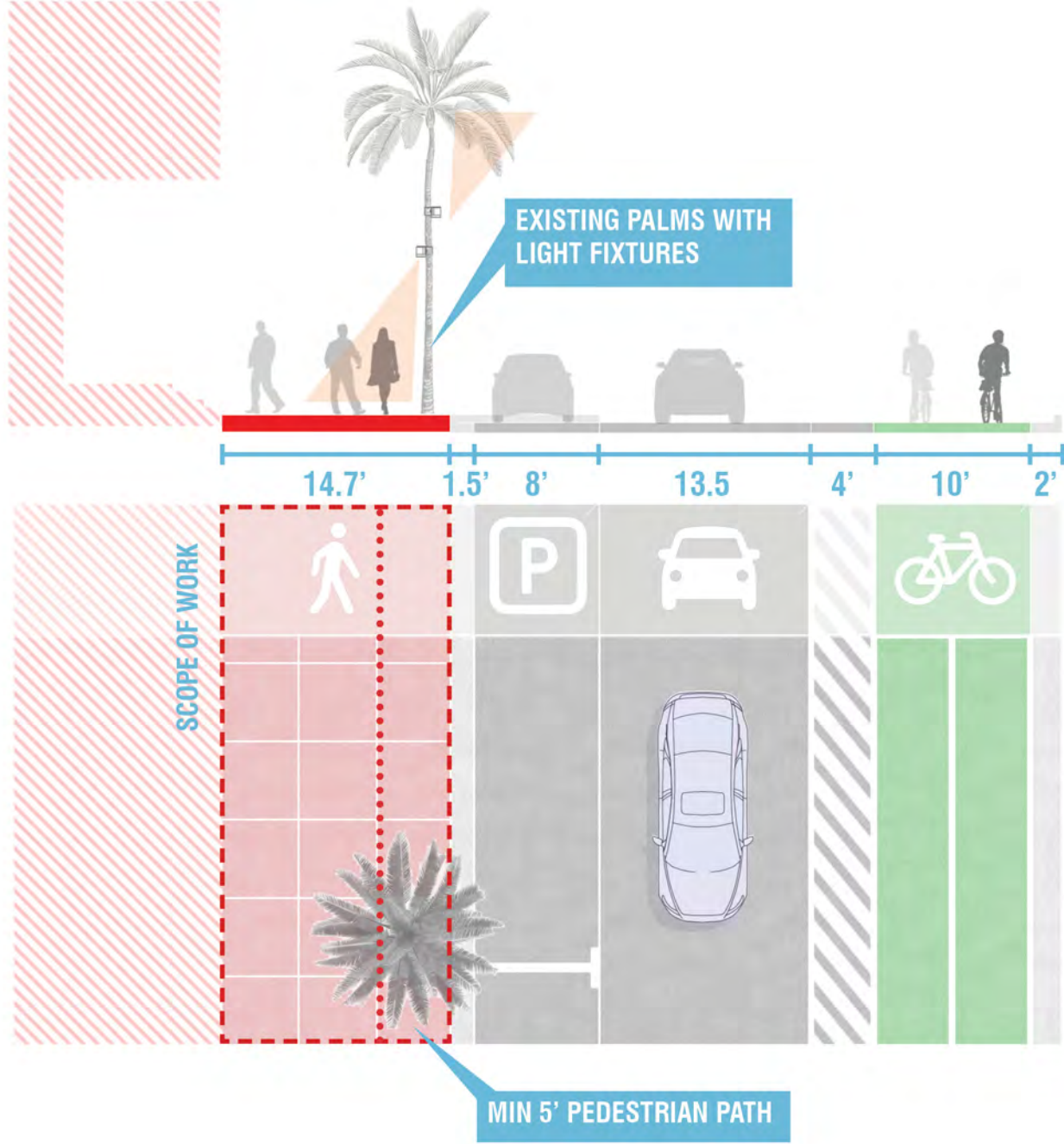
02





Existing sidewalks

EXISTING SECTION

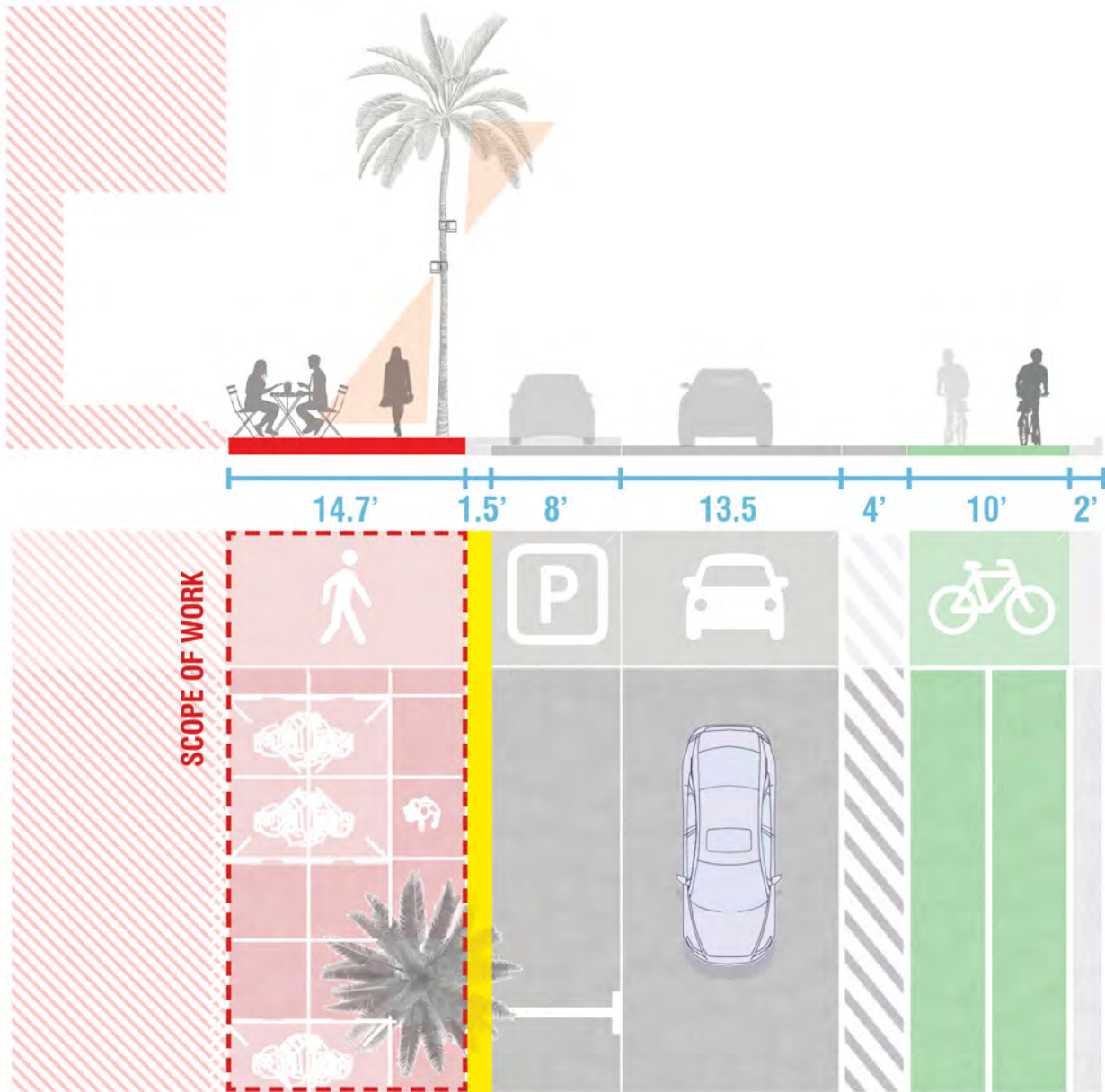


EXISTING CONDITION



Existing sidewalks

EXISTING SECTION

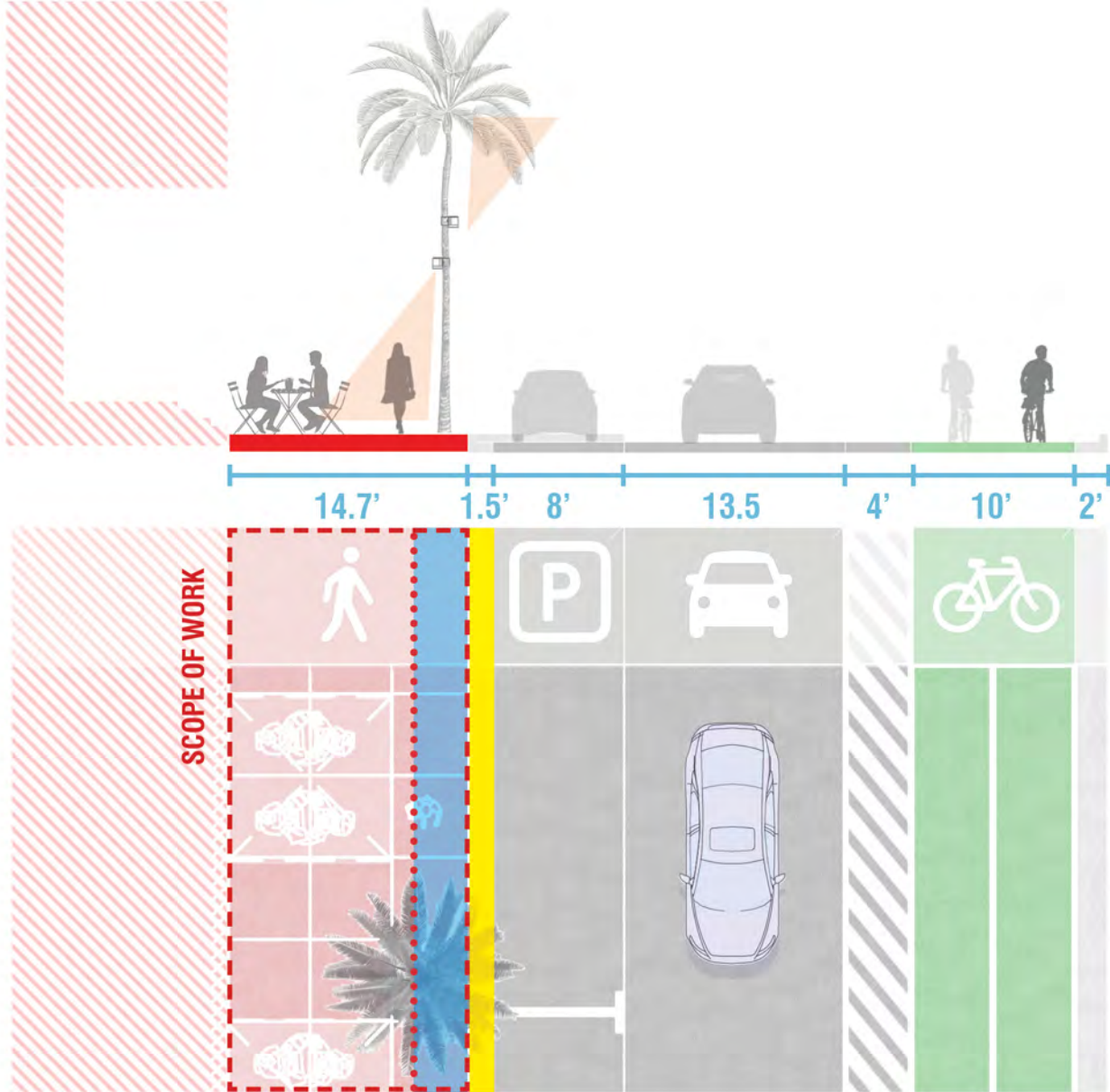


EXISTING CONDITION



Existing sidewalks

EXISTING SECTION

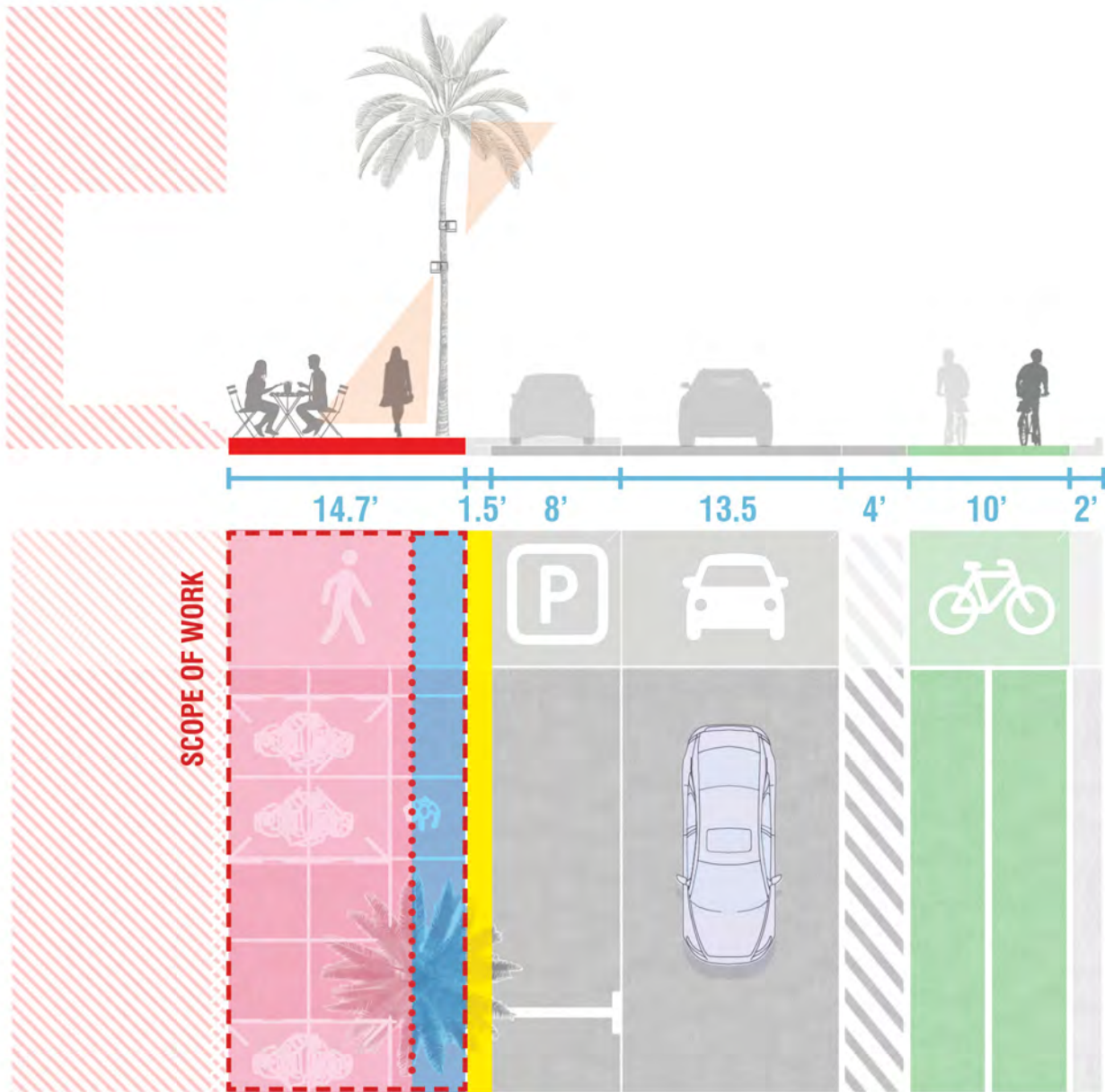


EXISTING CONDITION



Existing sidewalks

EXISTING SECTION

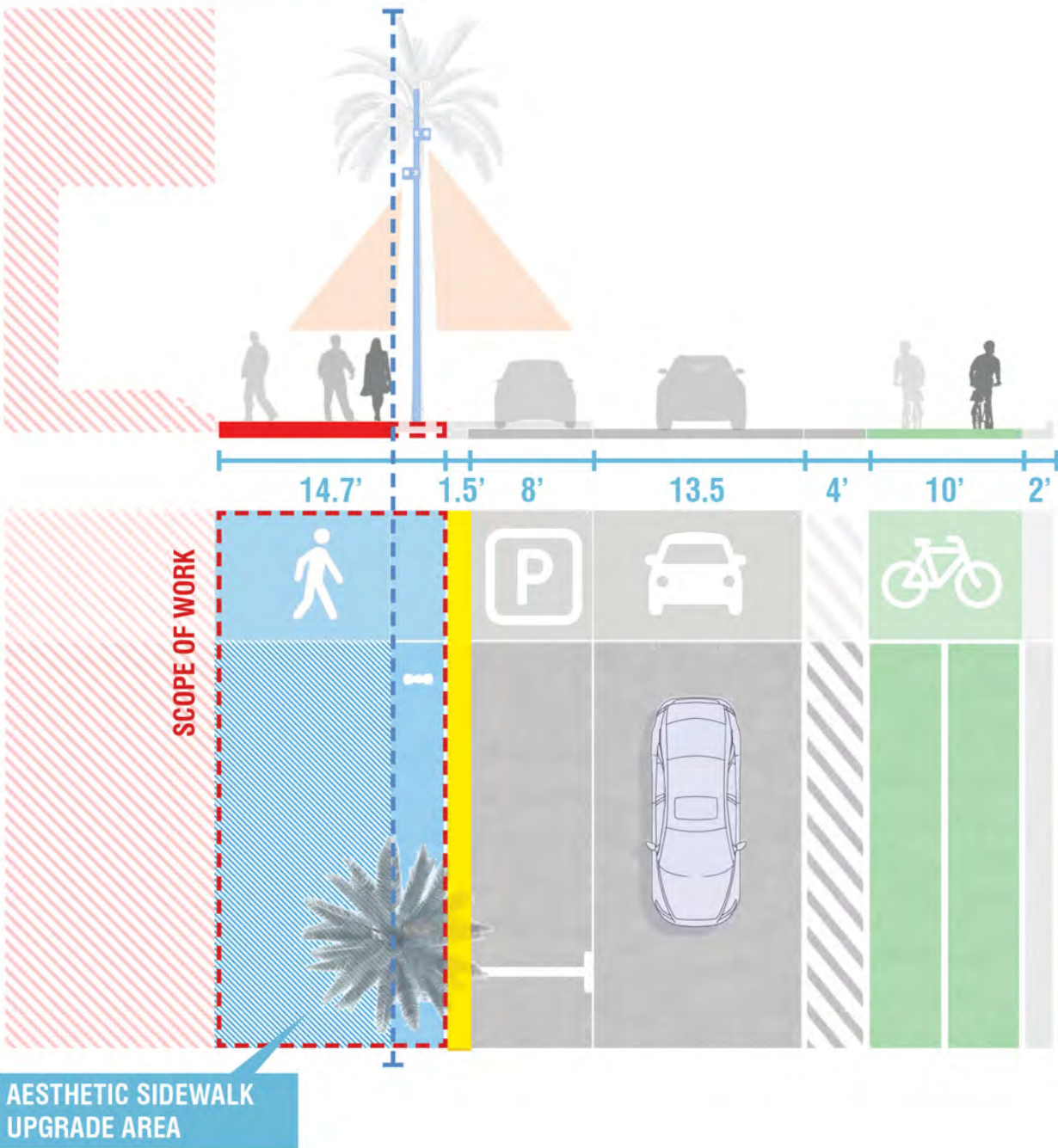


EXISTING CONDITION

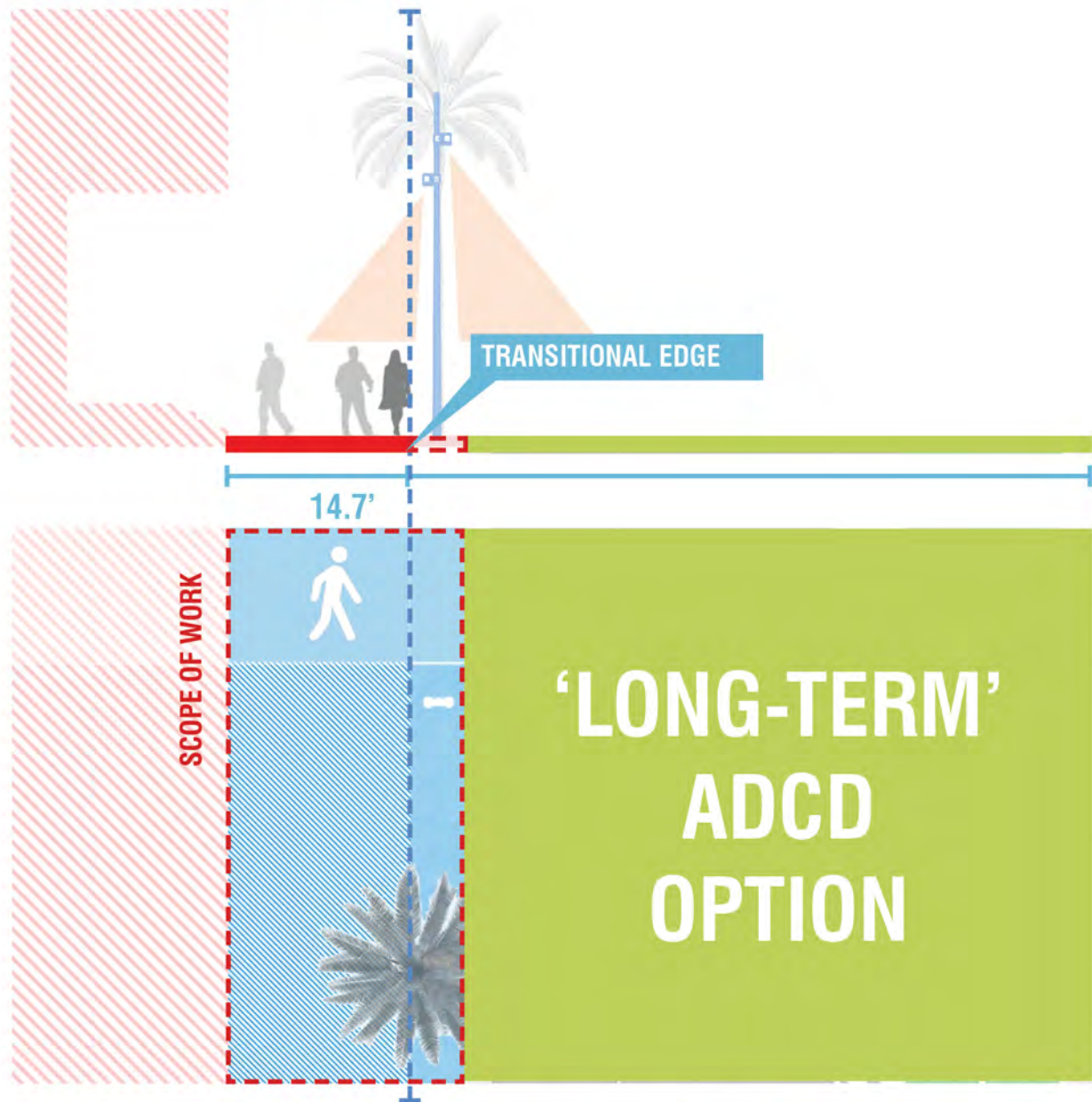


Existing sidewalks

PROPOSED SECTION

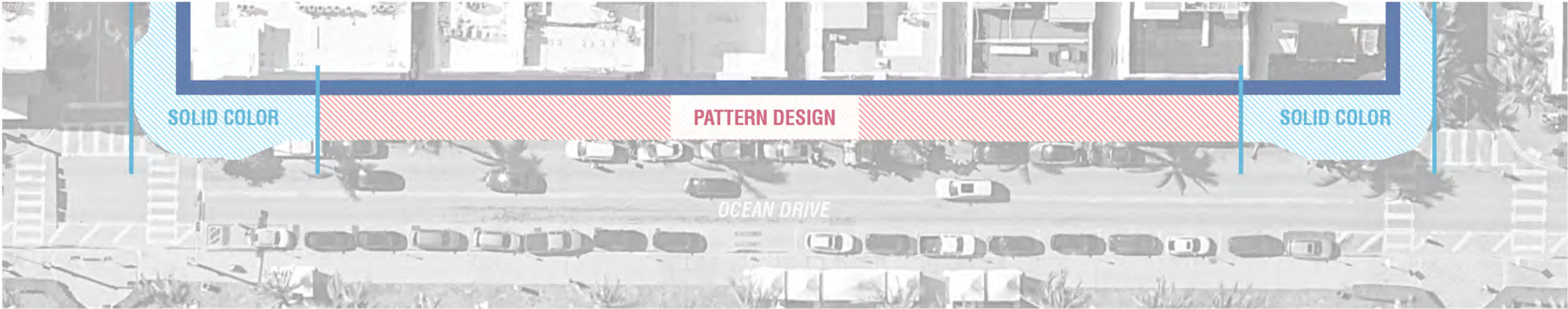


PROPOSED SECTION



Proposed sidewalks

SINGLE BLOCK DIAGRAM



ADA ACCESS TO CROSSWALKS



UTILITY POLES



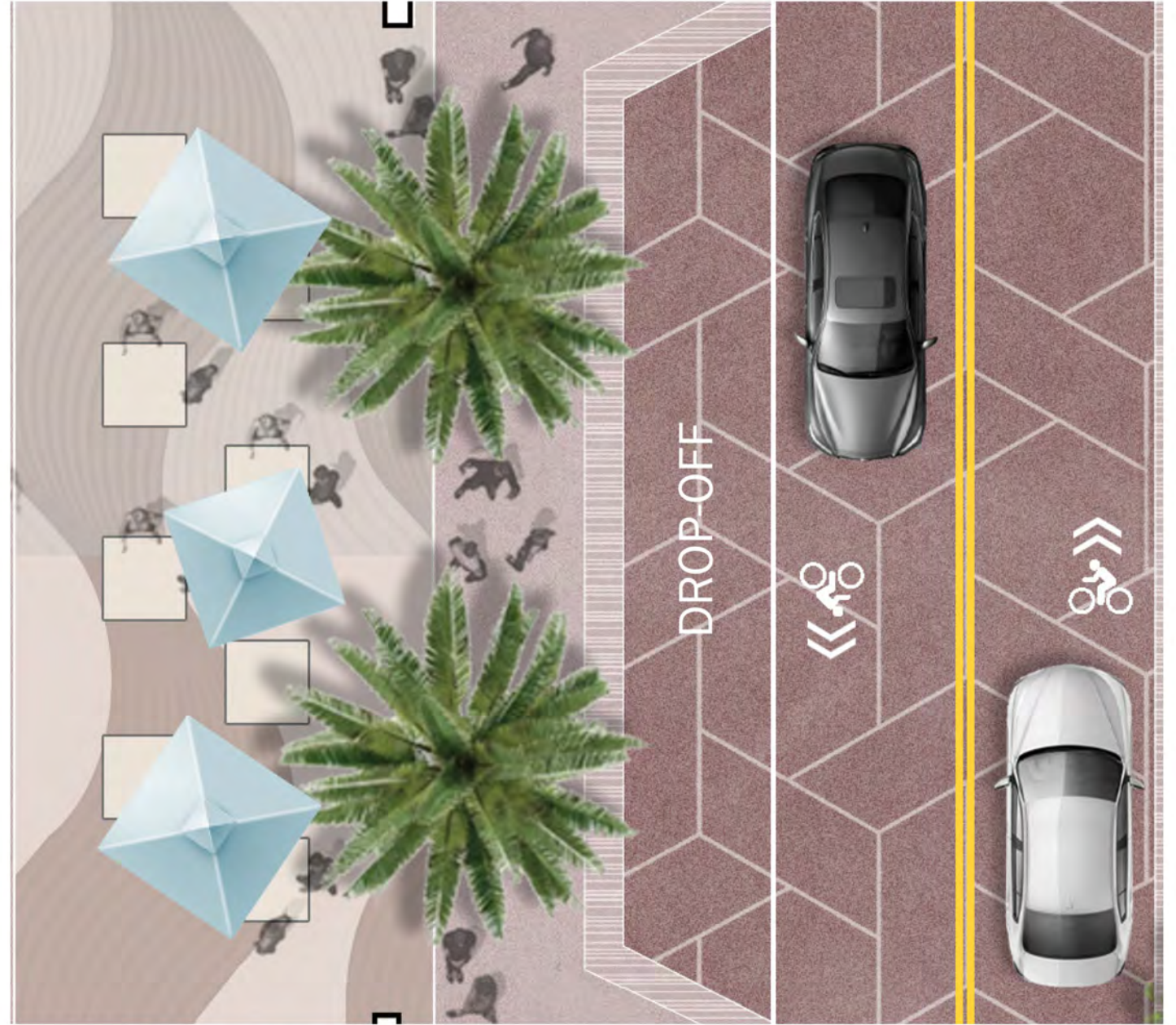
VEHICULAR TRAFFIC SIGNALIZATION



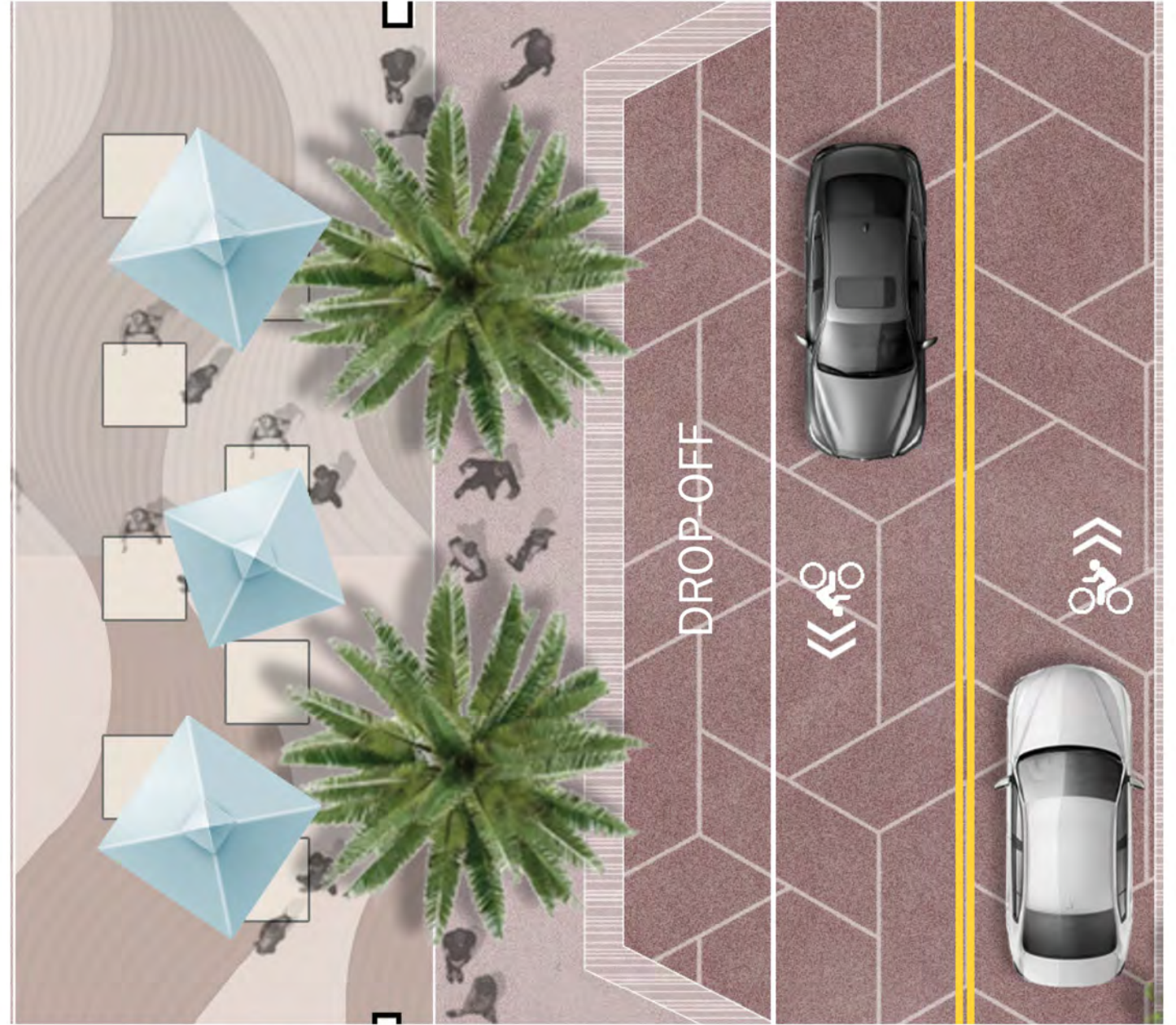
LANDSCAPING BULB-OUTS



Typical corner condition



ADCD Vision Plan - Paving



ADCD Vision Plan - Paving

COPACABANA



BISCAYNE BOULEVARD



LINCOLN ROAD (1100 BLOCK)



ADCD MASTERPLAN



Paving Precedents - Local

ATLANTIC OCEAN

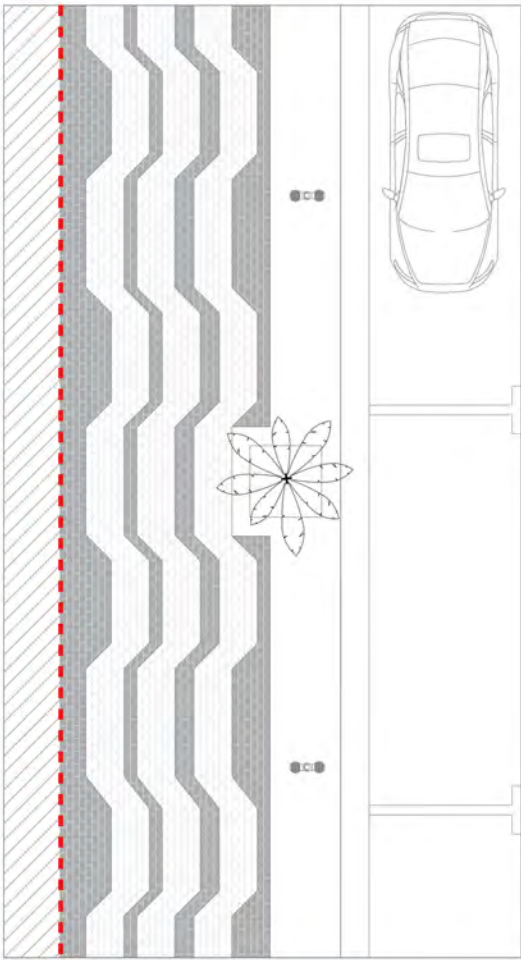


MIAMI BEACH ART DECO



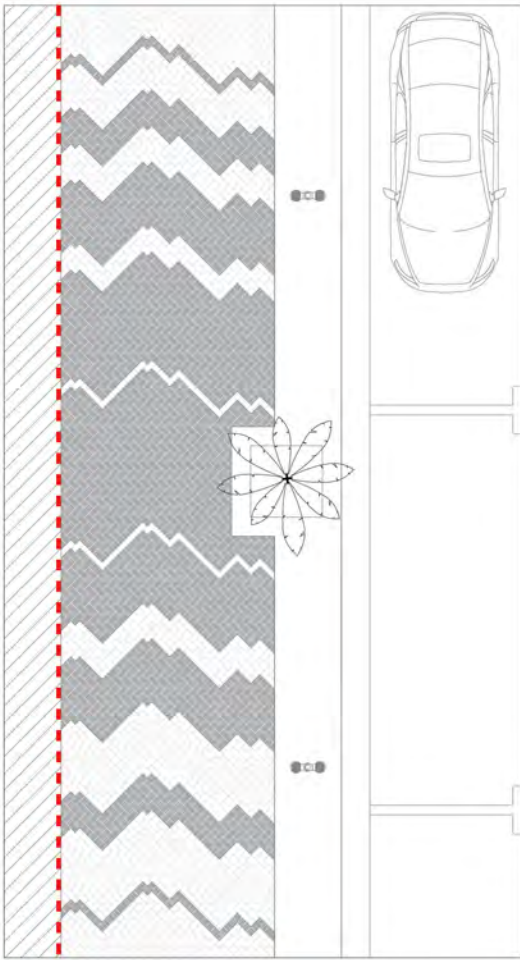
Design inspiration

OPTION 01



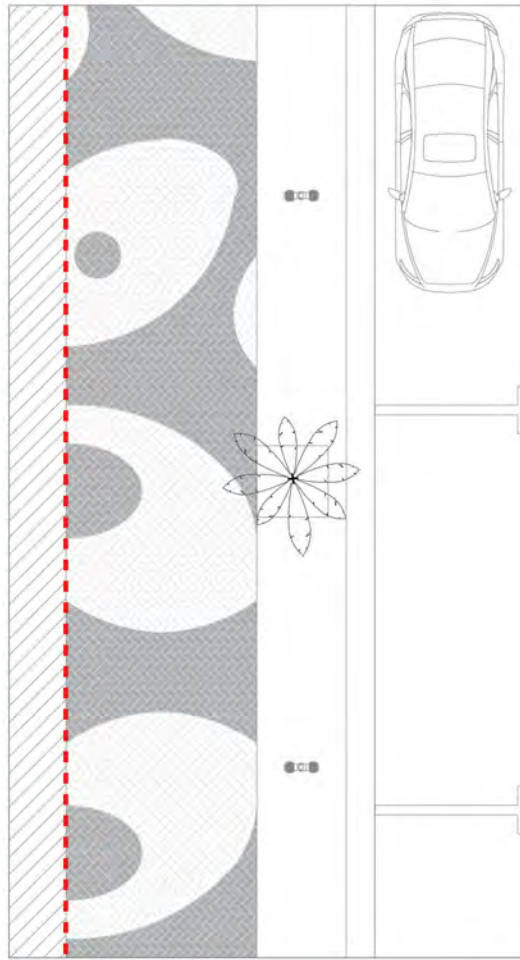
SOLDIER COURSE PATTERN

OPTION 02



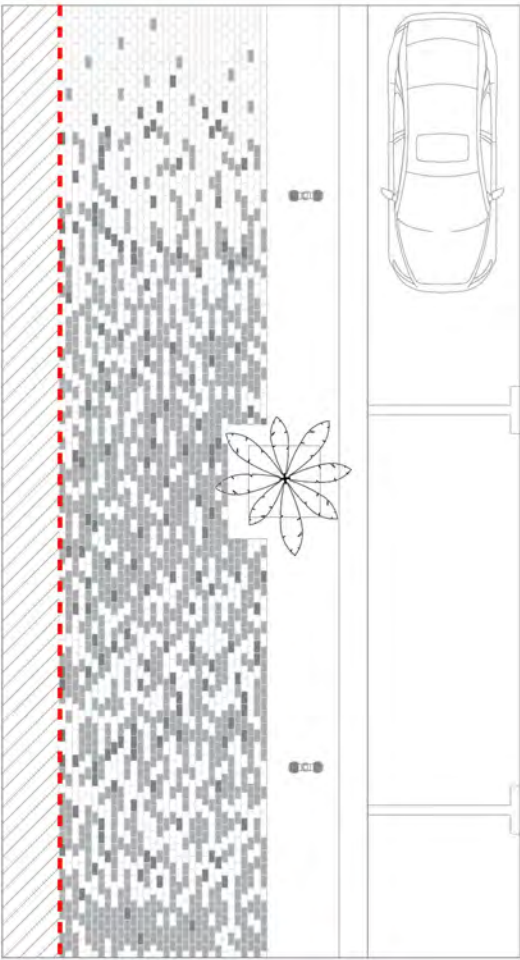
HERRINGBONE PATTERN

OPTION 03



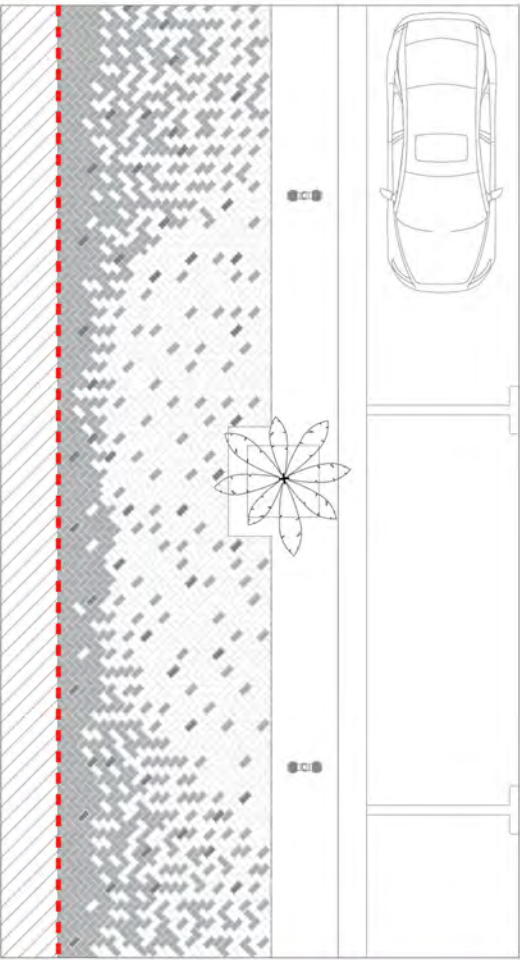
HERRINGBONE PATTERN

OPTION 04



SOLDIER COURSE RANDOMIZED

OPTION 05

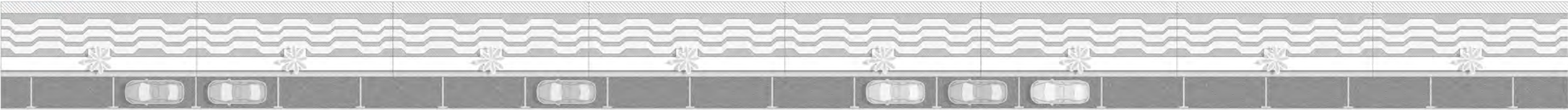


HERRINGBONE PATTERN RANDOMIZED

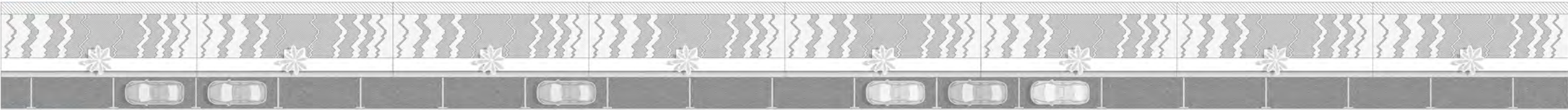
PROPOSED ALTERNATIVES

Paving patterns modules

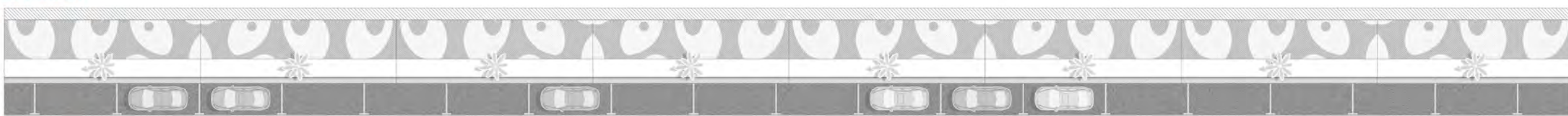
OPTION 01



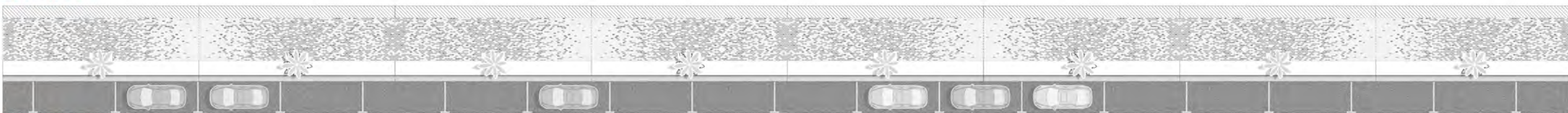
OPTION 02



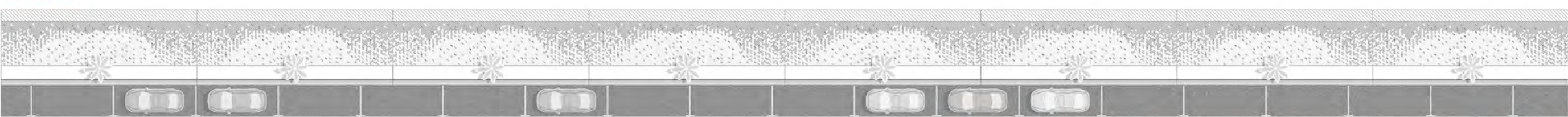
OPTION 03



OPTION 04



OPTION 05



Paving patterns modules

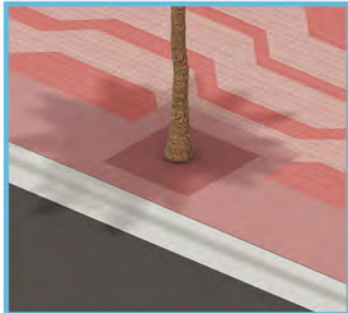
OPTION 01 A
SOLDIER COURSE/ PAVERS 4"X8"



OPTION 01 B
SOLDIER COURSE/ PAVERS 4"X8"



OPTION 01 SEATING
SOLDIER COURSE/ PAVERS 4"X8"



ACCESS TO MANHOLES & TREES



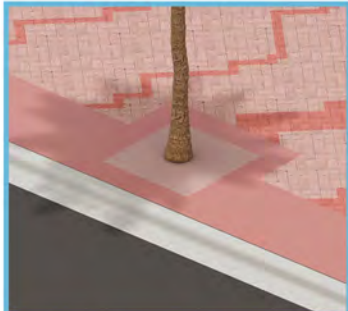
OPTION 02 A
HERRINGBONE PATTERN/ PAVERS 4"X8"



OPTION 02 B
HERRINGBONE PATTERN/ PAVERS 4"X8"



OPTION 02 SEATING
HERRINGBONE PATTERN/ PAVERS 4"X8"



ACCESS TO MANHOLES & TREES



OPTION 03 A
HERRINGBONE PATTERN/ PAVERS 4"X8"



OPTION 03 B
HERRINGBONE PATTERN/ PAVERS 4"X8"

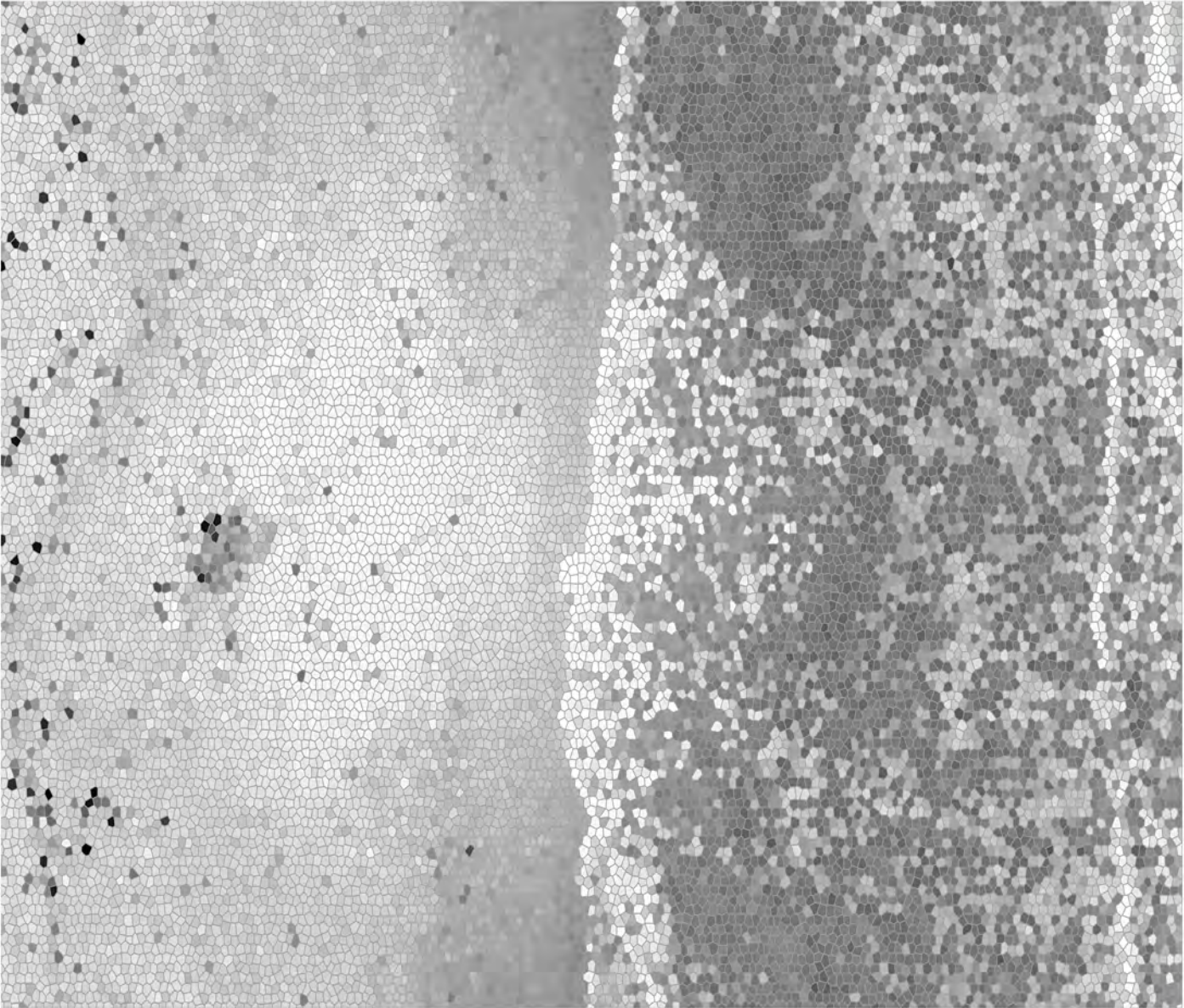


OPTION 03 SEATING
HERRINGBONE PATTERN/ PAVERS 4"X8"



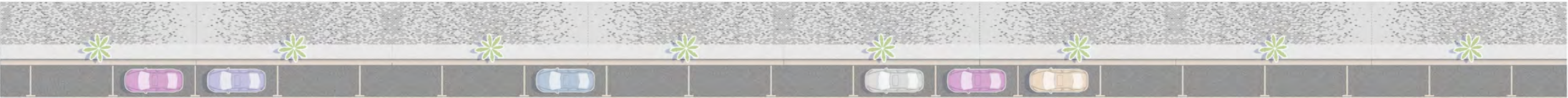
ACCESS TO MANHOLES & TREES



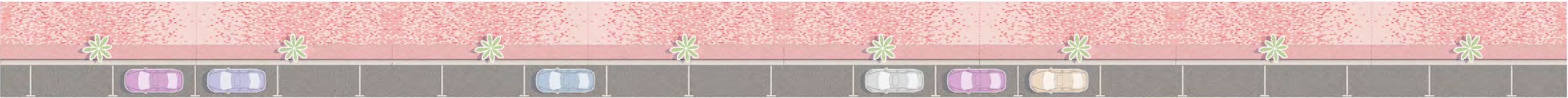


Design inspiration

OPTION 04 A
SOLDIER COURSE/ PAVERS 4"X8"



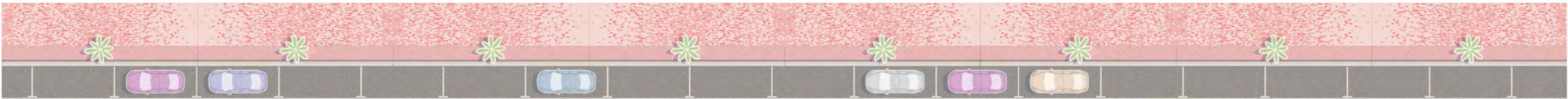
OPTION 04 B
SOLDIER COURSE/ PAVERS 4"X8"



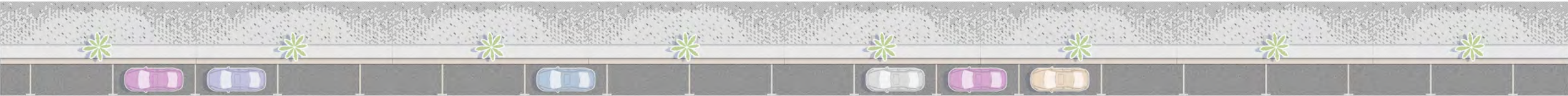
OPTION 04 SEATING
SOLDIER COURSE/ PAVERS 4"X8"



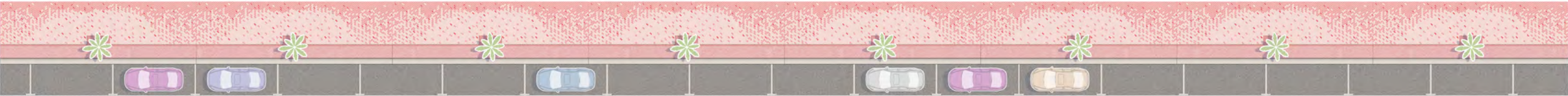
ACCESS TO MANHOLES & TREES



OPTION 05 A
HERRINGBONE PATTERN/ PAVERS 4"X8"



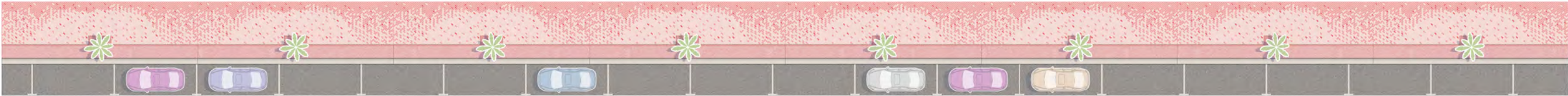
OPTION 05 B
HERRINGBONE PATTERN/ PAVERS 4"X8"



OPTION 05 SEATING
HERRINGBONE PATTERN/ PAVERS 4"X8"



ACCESS TO MANHOLES & TREES



OPTION 05 SEATING
HERRINGBONE PATTERN/ PAVERS 4"X8"



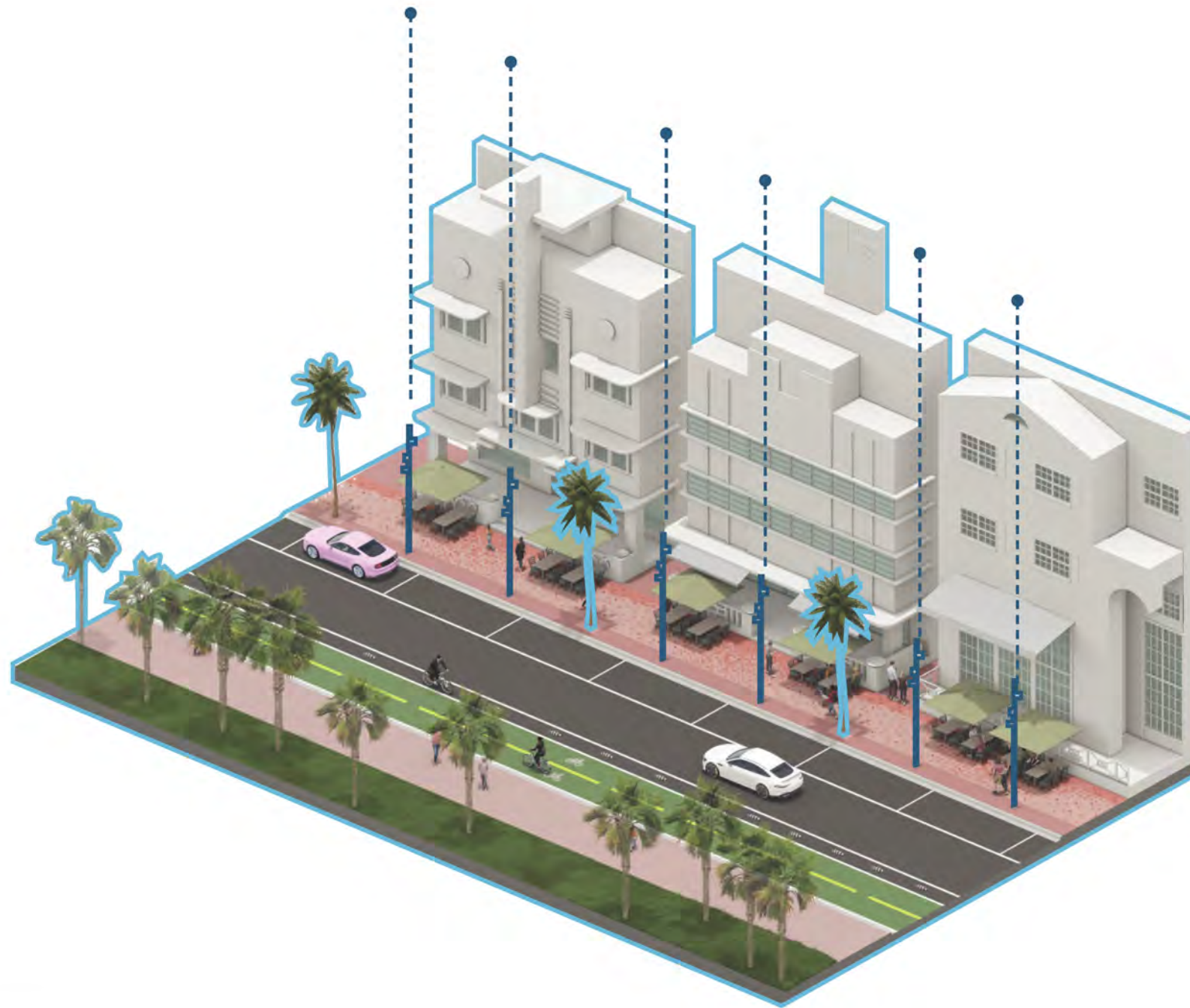
ACCESS TO MANHOLES & TREES



Design Recommendation

Discuss lighting strategy for Ocean Drive





Turn

Design: FRIIS & MOLTKE Design



TURN SPOT

Turn by Friis & Moltke Design is a new brand in the Focus program.

The luminaires in cast aluminium have silk-edged shades in clear glass. The housing is completed by a long ring in cast aluminium or a short, opal-white acrylate ring.

Turn is available as a spot with reflector or with optics for asymmetrical light.



TURN SPOT HALO

Turn Spot is equipped with a long ring in cast aluminium for cut-off and antiglare.

Turn Spot Halo is equipped with a short, opal-white acrylate ring, opening the luminaire and offering optical guidance.

Both spots are equipped with reflector and LED with light distribution in three angles: narrow (12°), medium (19°), and wide (38°).

The spots can be adjusted horizontally around the post and vertically in the bracket. When holes have been bored in the post, the spots can be turned 90 degrees to both sides.



TURN STREET HALO

Turn Street Halo is available in one version only. The closing with the short, opal-white ring opens up for asymmetrical light onto cycling lanes and pedestrian areas.

The street luminaire will be equipped with programmed LED and lenses for asymmetrical light.

Find our sales partner in your country under Contacts at www.focus-lighting.dk

FOCUS-LIGHTING

PROPOSED ALTERNATIVES

02MODULE

47



CITY OF MIAMI BEACH

OCEAN DRIVE | LIGHTING AND SIDEWALK IMPROVEMENTS

PUBLIC MEETING

MARCH 2025



Turn

Design: FRIIS & MOLTKE Design



Turn by Friis & Moltke Design is a new brand in the Focus program.

The luminaires in cast aluminium have silk-edged shades in clear glass. The housing is completed by a long ring in cast aluminium or a short, opal-white acrylate ring.

Turn is available as a spot with reflector or with optics for asymmetrical light.



Turn Spot is equipped with a long ring in cast aluminium for cut-off and antiglare.

Turn Spot Halo is equipped with a short, opal-white acrylate ring, opening the luminaire and offering optical guidance.

Both spots are equipped with reflector and LED with light distribution in three angles: narrow (12°), medium (19°), and wide (38°).

The spots can be adjusted horizontally around the post and vertically in the bracket. When holes have been bored in the post, the spots can be turned 90 degrees to both sides.



Turn Street Halo is available in one version only. The closing with the short, opal-white ring opens up for asymmetrical light onto cycling lanes and pedestrian areas.

The street luminaire will be equipped with programmed LED and lenses for asymmetrical light.

FOCUS-LIGHTING

PROPOSED ALTERNATIVES

02MODULE

48



CITY OF MIAMI BEACH

OCEAN DRIVE | LIGHTING AND SIDEWALK IMPROVEMENTS

PUBLIC MEETING

MARCH 2025

Find our sales partner in your country under Contacts at www.focus-lighting.dk



Turn

Design: FRIIS & MOLTKE Design



TURN SPOT

Turn by Friis & Moltke Design is a new brand in the Focus program.

The luminaires in cast aluminium have silk-edged shades in clear glass. The housing is completed by a long ring in cast aluminium or a short, opal-white acrylate ring.

Turn is available as a spot with reflector or with optics for asymmetrical light.



TURN SPOT HALO

Turn Spot is equipped with a long ring in cast aluminium for cut-off and antiglare.

Turn Spot Halo is equipped with a short, opal-white acrylate ring, opening the luminaire and offering optical guidance.

Both spots are equipped with reflector and LED with light distribution in three angles: narrow (12°), medium (19°), and wide (38°).

The spots can be adjusted horizontally around the post and vertically in the bracket. When holes have been bored in the post, the spots can be turned 90 degrees to both sides.



TURN STREET HALO

Turn Street Halo is available in one version only. The closing with the short, opal-white ring opens up for asymmetrical light onto cycling lanes and pedestrian areas.

The street luminaire will be equipped with programmed LED and lenses for asymmetrical light.

FOCUS-LIGHTING

PROPOSED ALTERNATIVES

02MODULE

49

Find our sales partner in your country under Contacts at www.focus-lighting.dk



CITY OF MIAMI BEACH

OCEAN DRIVE | LIGHTING AND SIDEWALK IMPROVEMENTS

PUBLIC MEETING

MARCH 2025



Recommended Fixture



CITY OF MIAMI BEACH

OCEAN DRIVE | LIGHTING AND SIDEWALK IMPROVEMENTS

PUBLIC MEETING

MARCH 2025

PROPOSED ALTERNATIVES

02MODULE

50





LIGHT FIXTURES ALLOW FOR THE INCORPORATION OF TURTLE-FRIENDLY AMBER LIGHTING AND DIRECTIONAL SHIELDS







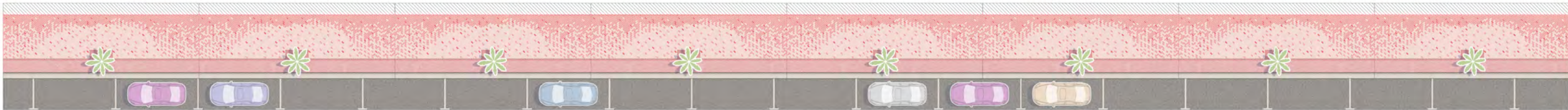


Design Recommendation

Summary of Recommendations

03





Design Recommendations