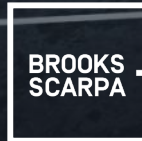


MIAMI BEACH 41 STREET CORRIDOR REVITALIZATION PROJECT

DESIGN REVIEW BOARD PRESENTATION
JULY 2, 2024



Stantec

HLB

MIAMI BEACH

SCOPE OF WORK



EXISTING CONDITIONS

EXISTING CHALLENGES



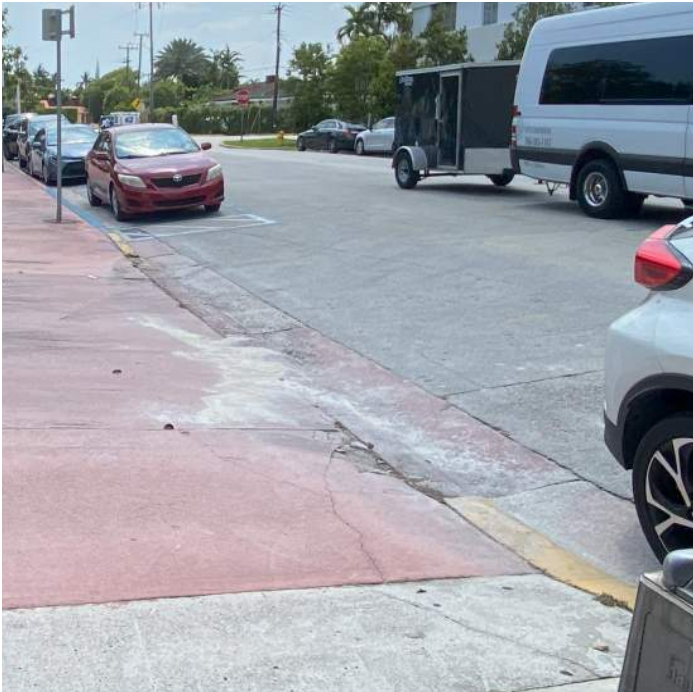
LOOSE CONCRETE PAVER



INAPPROPRIATE LANDSCAPING



ACCESSIBILITY ISSUES



BROKEN PAVEMENT



UNSAFE WIRING



OUTDATED STREET LAMPS



BROKEN LIGHT FIXTURES



DAMAGED SIDE-STREETS

41ST STREET REVITALIZATION PLAN

EXISTING SITE PLAN



30% DESIGN SITE PLAN



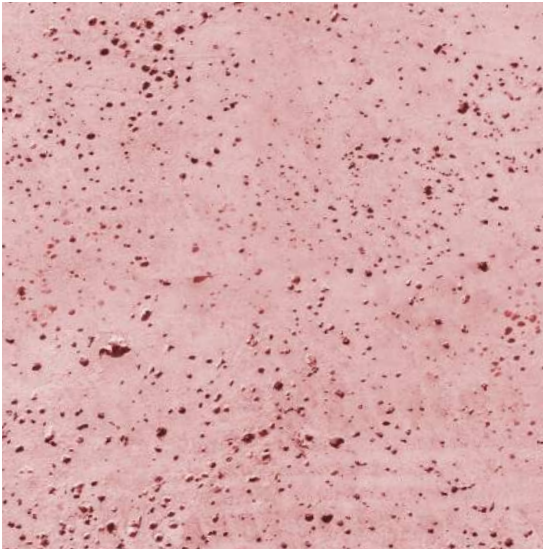
60% DESIGN SITE PLAN



60% DESIGN SITE PLAN



KIT OF PARTS



Miami Beach Red Concrete



Branded Concrete



Public Art



Bike Racks



Benches



Shade Trees



Landscaping



Precast Seat Walls



Trash Receptacles



Bus Stops

PROPOSED PLANTING PALETTE

EXISTING CANOPY



Royal Palm
Roystonea regia



Strangler Fig
Ficus aurea



Green Buttonwood
Conocarpus erectus

IF THE ROOT OF AN EXISTING ROYAL PALM ARE AT GRADE, THEN METAL GRATING BECOMES THE PRIMARY TOOL TO PROTECT THE TREE AND EXPAND THE WALKS



EXISTING



PROPOSED

LARGE CANOPY



Live Oak
Quercus virginiana



Green Buttonwood
Conocarpus erectus



Gumbo Limbo
Bursera simaruba



Mahogany Tree
Swietenia mahogani



Wild Tamarind
Lysiloma latisiliquum

MEDIUM CANOPY



Silver Buttonwood
Conocarpus erectus



Pigeon Plum
Coccoloba diversifolia



Autograph Tree
Clusia rosea

GROUND COVERS



Wart Fern
Phymatosorus scolopendria



Philodendron 'Burle-Marx'
Philodendron burle-marxii



Monstera
Monstera deliciosa



Dwarf palmetto
Sabal minor



Muhly Grass
Muhlenbergia capillaris



Milkweed
Asclepias syriaca



Spartina Grass
Spartina



Fakahatchee Grass
Tripsacum dactyloides



Perennial Peanut
Arachis glabrata

SUSTAINABILITY

- Combating Heat Island effect with light materials

EXISTING FURNITURE



Benches

REFINISHED STREET FURNITURE



Stainless Steel/
Aluminum Mill Finish

PROPOSED FURNITURE

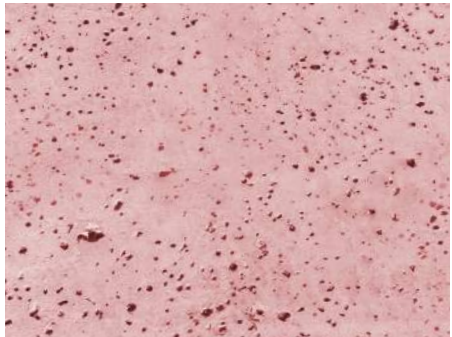


Landscape Forms
Milenio



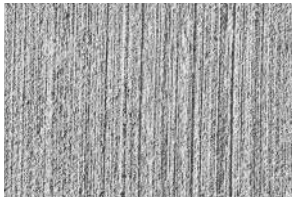
Wausau
Seat Walls

PRECAST SEAT WALLS

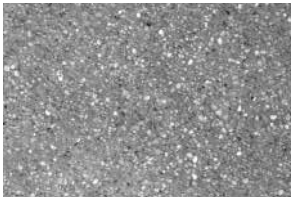


Miami Beach Red Concrete

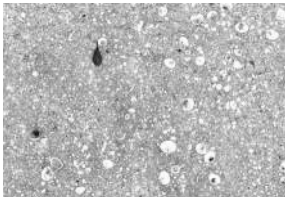
PROPOSED PAVING
MATERIAL



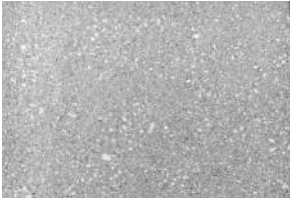
Broom Finish



Exposed Aggregate



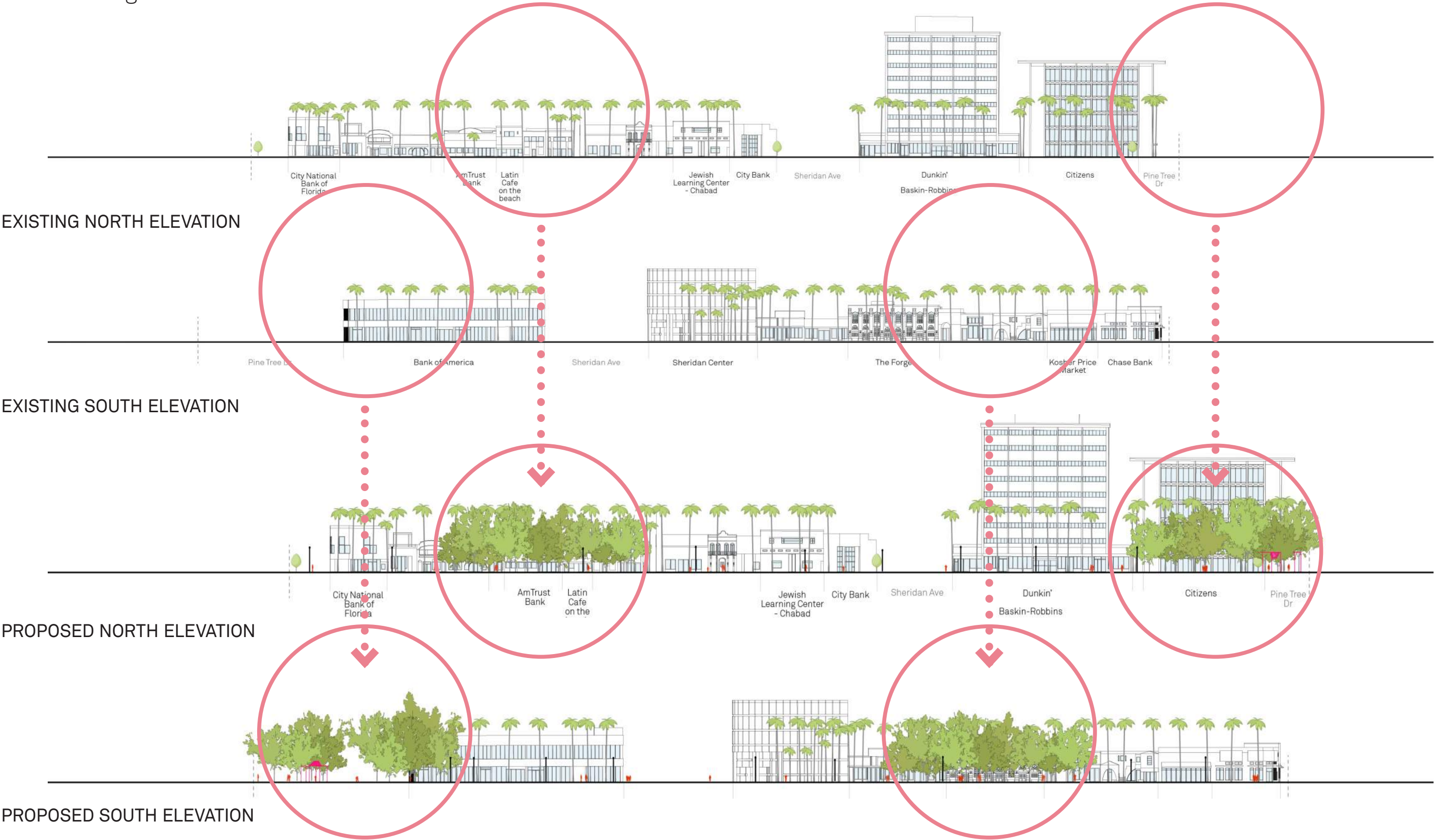
Seashell Aggregate



Light Sandblasted

SUSTAINABILITY

- Combating Heat Island effect with shade trees











PRECEDENTS

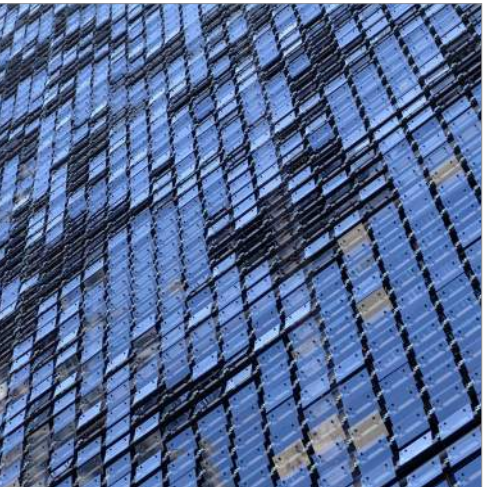
PROPOSED PUBLIC ART AND GATEWAY FEATURES



Miami Beach Soundscape
West 8



Miami Design District
Bouroullec Brothers



Firefly - moving wall
Ned Kahn



Gateway Pavilion
Pembroke Pines, FL



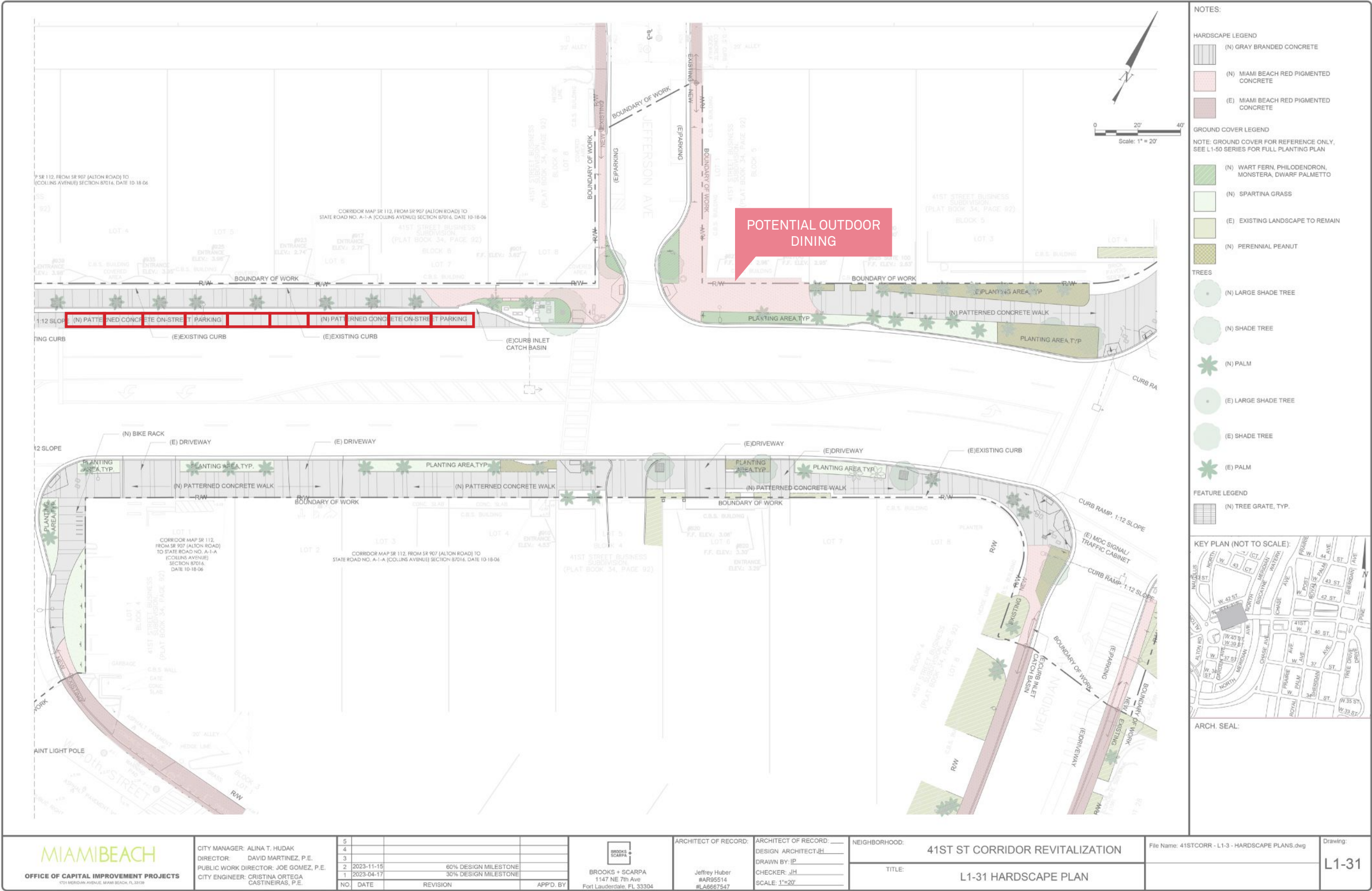
CAM Museum of Art
Raleigh, NC



Proposed Gateway Art Feature
Bent pipe, metal mesh, marine grade paint



CURRENT DESIGN - JEFFERSON AVE.



NOTES:

HARDSCAPE LEGEND

- (N) GRAY BRANDED CONCRETE
- (N) MIAMI BEACH RED PIGMENTED CONCRETE
- (E) MIAMI BEACH RED PIGMENTED CONCRETE

GROUND COVER LEGEND

NOTE: GROUND COVER FOR REFERENCE ONLY, SEE L1-50 SERIES FOR FULL PLANTING PLAN

- (N) WART FERN, PHILODENDRON, MONSTERA, DWARF PALMETTO
- (N) SPARTINA GRASS
- (E) EXISTING LANDSCAPE TO REMAIN
- (N) PERENNIAL PEANUT

TREES

- (N) LARGE SHADE TREE
- (N) SHADE TREE
- (N) PALM
- (E) LARGE SHADE TREE
- (E) SHADE TREE
- (E) PALM

FEATURE LEGEND

- (N) TREE GRATE, TYP.

KEY PLAN (NOT TO SCALE):



ARCH. SEAL:

THIS SPACE RESERVED FOR PROJECT MILESTONE

<div><p>MIAMI BEACH</p><p>OFFICE OF CAPITAL IMPROVEMENT PROJECTS</p><p>101 MERIDIAN AVENUE, MIAMI BEACH, FL 33139</p></div>	CITY MANAGER: ALINA T. HUDAK DIRECTOR: DAVID MARTINEZ, P.E. PUBLIC WORK DIRECTOR: JOE GOMEZ, P.E. CITY ENGINEER: CRISTINA ORTEGA CASTINEIRAS, P.E.	5				<div><p>BROOKS + SCARPA</p><p>BROOKS & SCARPA 1147 NE 7th Ave Fort Lauderdale, FL 33304</p></div>	ARCHITECT OF RECORD: Jeffrey Huber #AR95514 #LA6667347	ARCHITECT OF RECORD: _____ DESIGN ARCHITECT JH DRAWN BY: JP CHECKER: JH SCALE: 1"=20'	NEIGHBORHOOD: 41ST ST CORRIDOR REVITALIZATION	File Name: 41STCORR - L1-3 - HARDSCAPE PLANS.dwg	Drawing: L1-31
		4									
		3									
		2	2023-11-15	60% DESIGN MILESTONE							
		1	2023-04-17	30% DESIGN MILESTONE							
				NO	DATE						

File Path: Z:\B+S ARCHITECTURE\021 JOBS\21015.0 City of Miami Beach-41st Street Corridor FL21015.0 1.Current Drawings_30X42

EXISTING



PROPOSED
AECOM



Bus Bay





LIGHTING OPTION 1



LIGHTING OPTION 2



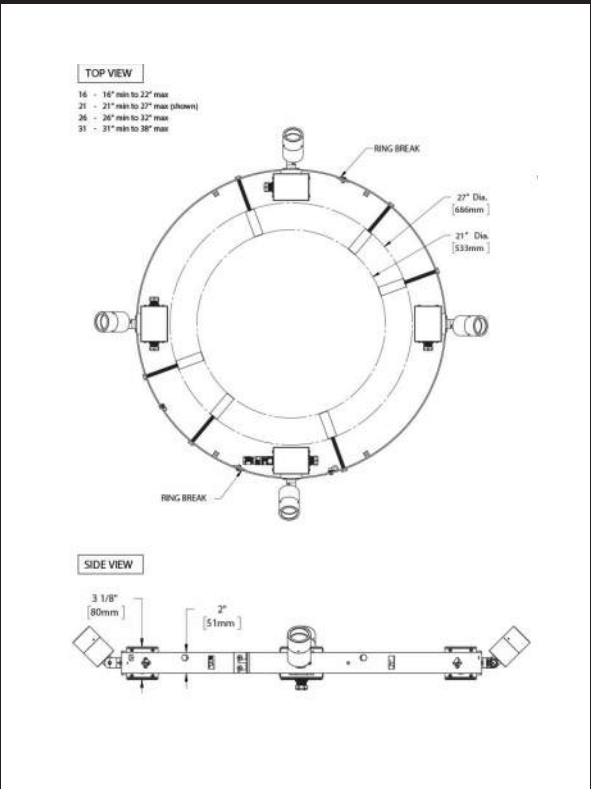
LIGHTING OPTION 3



LIGHTING OPTIONS | WALKS

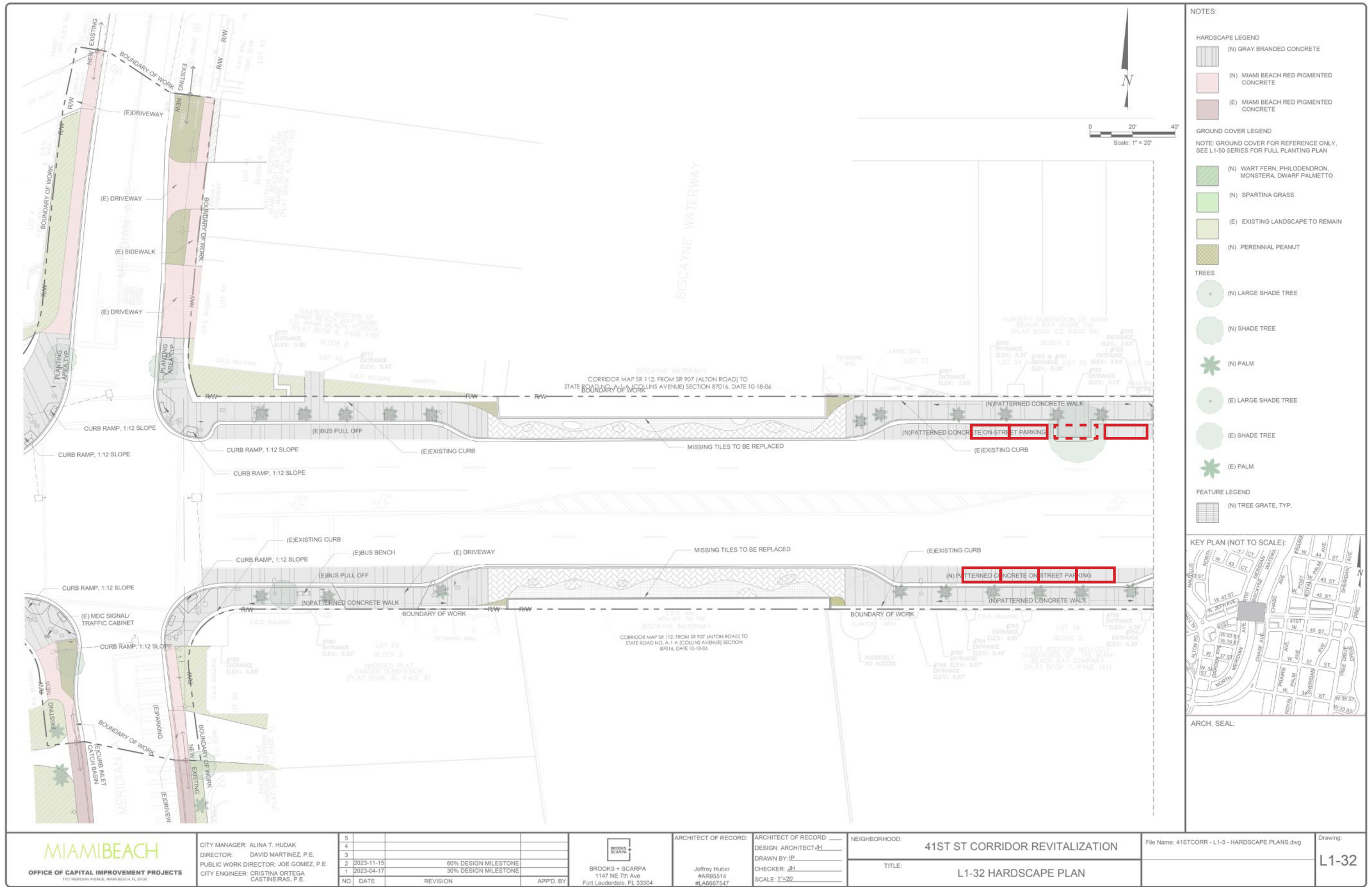
- Four adjustable ring sizes
- Remote or integral power supply
- Tree-friendly mounting
- 1/8” stainless steel construction

ACCENT LIGHTS



B-K LIGHTING
PALM TREE RING

CURRENT DESIGN - BRIDGE OVER BISCAYNE WATERWAY

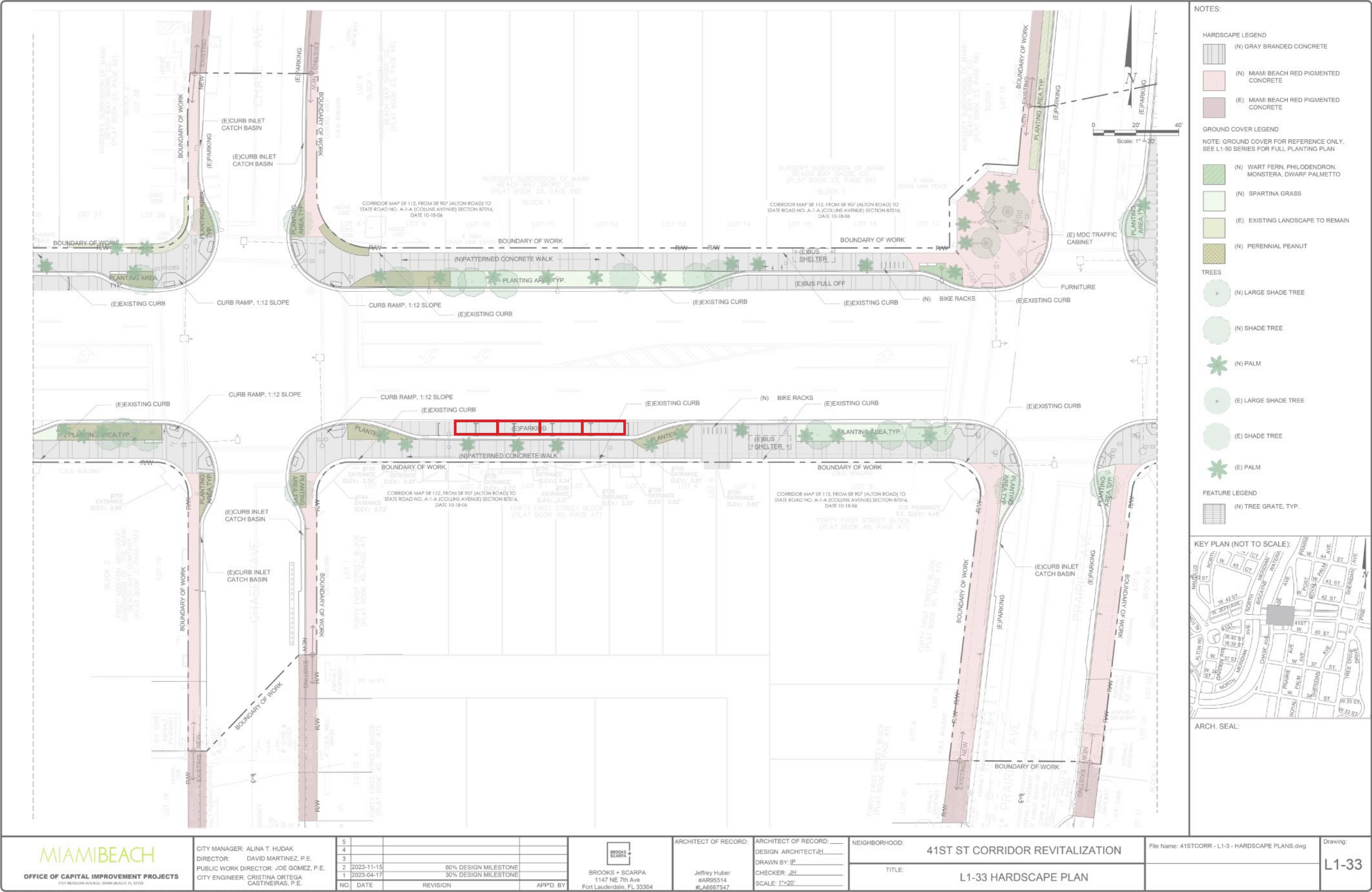


The main drawing is a detailed hardscape plan for the 41st Street Corridor Revitalization project. It shows a section of 41st Street running horizontally across the middle, with Chace Avenue intersecting from the north and south. The plan includes various elements such as:

- Sidewalks:** Labeled as '(N) PATTERNED CONCRETE WALK'.
- Plantings:** Indicated by green symbols and labels like '(E) EXISTING CURB', '(E) EXISTING LANDSCAPE TO REMAIN', and specific tree types like '(N) SPARTINA GRASS' or '(N) WART FERN'.
- Infrastructure:** Includes curbs, ramps (e.g., 'CURB RAMP, 1:12 SLOPE'), catch basins, bus shelters, bike racks, and furniture.
- Boundaries:** Dashed lines indicate the 'BOUNDARY OF WORK' along the corridor.
- Adjacent Properties:** Various lots and buildings are shown, some with addresses and owner information (e.g., 'FORTY FIRST STREET BLOCK', 'C.B.S. BUILDING').
- Scale and Orientation:** A scale bar at the top right indicates 1 inch equals 20 feet. A north arrow points towards the top right.

MIAMI BEACH OFFICE OF CAPITAL IMPROVEMENT PROJECTS <small>1701 BUREAU AVENUE, MIAMI BEACH, FL 33139</small>		CITY MANAGER: ALINA T. HUDAK DIRECTOR: DAVID MARTINEZ, P.E. PUBLIC WORK DIRECTOR: JOE GOMEZ, P.E. CITY ENGINEER: CRISTINA ORTEGA CASTAÑEIRAS, P.E.		<table border="1"> <thead> <tr> <th>NO.</th><th>DATE</th><th>REVISION</th><th>APP'D. BY</th></tr> </thead> <tbody> <tr> <td>1</td><td>2023-04-17</td><td>30% DESIGN MILESTONE</td><td></td></tr> <tr> <td>2</td><td>2023-11-15</td><td>60% DESIGN MILESTONE</td><td></td></tr> <tr> <td>3</td><td></td><td></td><td></td></tr> <tr> <td>4</td><td></td><td></td><td></td></tr> <tr> <td>5</td><td></td><td></td><td></td></tr> </tbody> </table>	NO.	DATE	REVISION	APP'D. BY	1	2023-04-17	30% DESIGN MILESTONE		2	2023-11-15	60% DESIGN MILESTONE		3				4				5				ARCHITECT OF RECORD: BROOKS + SCARPA 1147 NE 7th Ave Fort Lauderdale, FL 33304 Jeffrey Huber #A965514 #LA6667547	ARCHITECT OF RECORD: DESIGN ARCHITECT JH DRAWN BY: JP CHECKER: JH SCALE: 1"=20' NEIGHBORHOOD: TITLE: 41ST ST CORRIDOR REVITALIZATION L1-33 HARDSCAPE PLAN	File Name: 41STCORR - L1-3 - HARDSCAPE PLANS.dwg Drawing: L1-33
NO.	DATE	REVISION	APP'D. BY																												
1	2023-04-17	30% DESIGN MILESTONE																													
2	2023-11-15	60% DESIGN MILESTONE																													
3																															
4																															
5																															

CURRENT DESIGN - PRAIRIE AVE.



CURRENT DESIGN - MID BLOCK CROSSING BEFORE ROYAL PALM AVE.



NOTES:

HARDSCAPE LEGEND

- (N) GRAY BRANDED CONCRETE
- (N) MIAMI BEACH RED PIGMENTED CONCRETE
- (E) MIAMI BEACH RED PIGMENTED CONCRETE

GROUND COVER LEGEND

NOTE: GROUND COVER FOR REFERENCE ONLY. SEE L1-50 SERIES FOR FULL PLANTING PLAN

- (N) WART FERN, PHILODENDRON, MONSTERA, DWARF PALMETTO
- (N) SPARTINA GRASS
- (E) EXISTING LANDSCAPE TO REMAIN
- (N) PERENNIAL PEANUT

TREES

- (N) LARGE SHADE TREE
- (N) SHADE TREE
- (N) PALM
- (E) LARGE SHADE TREE
- (E) SHADE TREE
- (E) PALM

FEATURE LEGEND

- (N) TREE GRATE, TYP.

KEY PLAN (NOT TO SCALE):

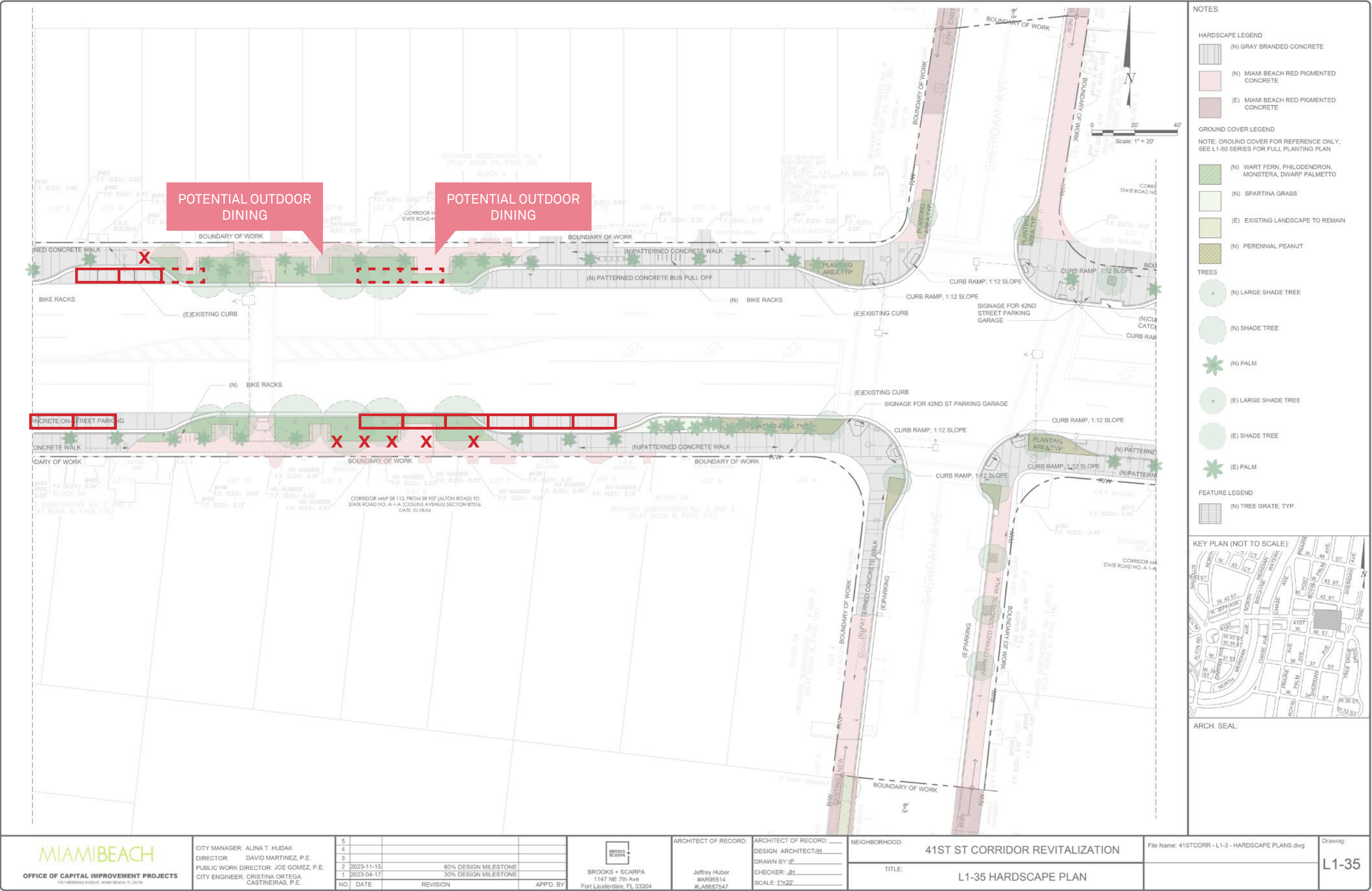
ARCH. SEAL:

CURRENT DESIGN - MID BLOCK CROSSING BEFORE SHERIDAN AVE.



THIS SPACE RESERVED FOR PROJECT MILESTONE

CURRENT DESIGN - MID BLOCK CROSSING BEFORE SHERIDAN AVE.



EXISTING



Existing Mid-Block Crossing



PROPOSED
AECOM



Mid-Block Crossing





CURRENT DESIGN - PINE TREE DRIVE AND HENRY LEIBMAN SQUARE



CURRENT DESIGN - PINE TREE DRIVE AND HENRY LEIBMAN SQUARE







