

Exhibit A



05 VIEW
SCALE: NTS



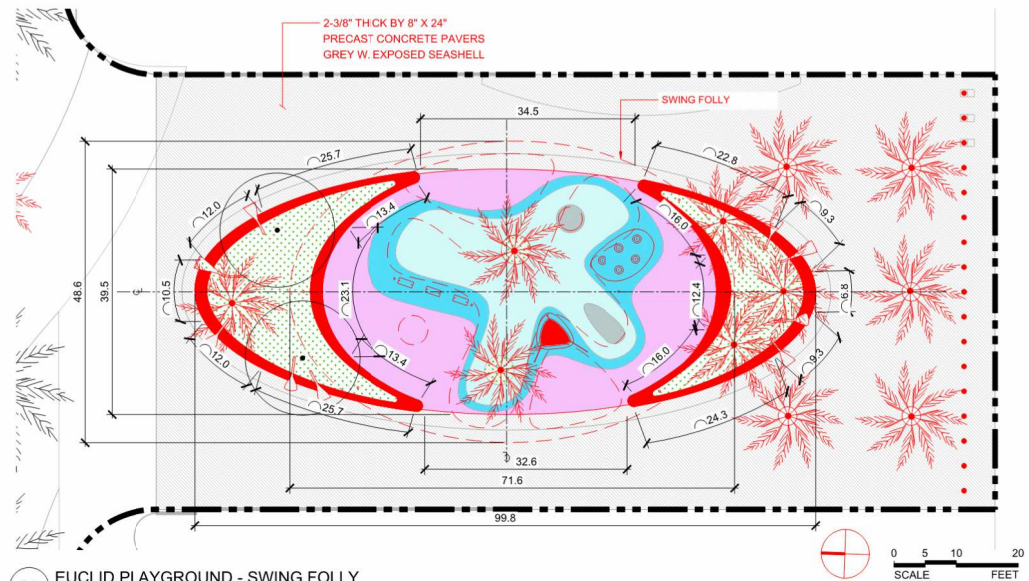
04 AXON
SCALE: NTS



03 AXON WITHOUT FOLLY
SCALE: NTS



02 SECTION
SCALE: 1" = 10'

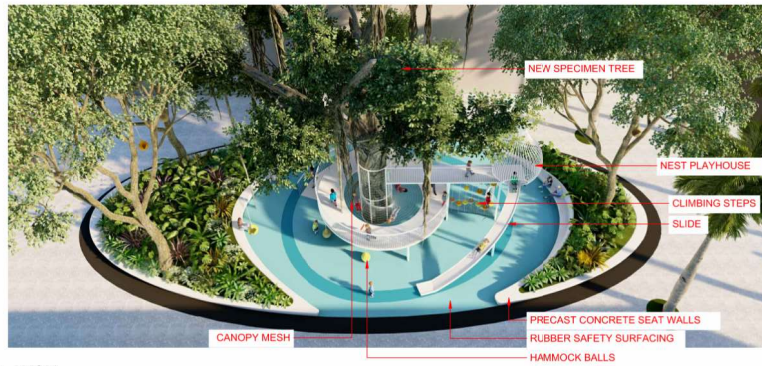


01 EUCLID PLAYGROUND - SWING FOLLY
SCALE: 1" = 10'

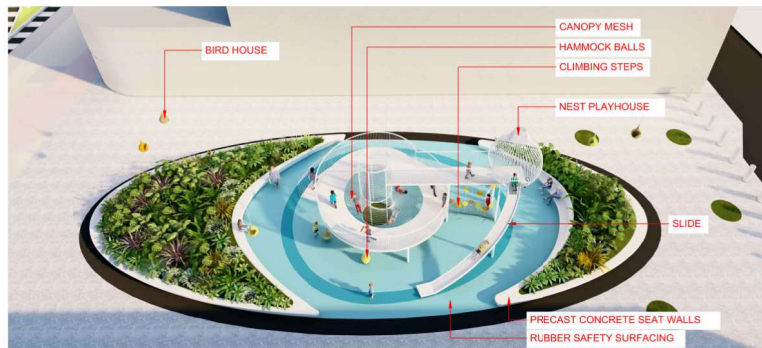
<div>MIAMI BEACH</div> <div>OFFICE OF CAPITAL IMPROVEMENTS PROJECTS</div> <div>1700 CONVENTION CENTER DRIVE, MIAMI BEACH, FL 33139</div>	NEIGHBORHOOD: NEIGHBORHOOD #9 - CITY CENTER	LEAD: JAMES CORNER FIELD OPERATIONS NEW YORK, NY 10018	CONSULTANT:	CITY MANAGER: JIMMY L. MORALES	LANDSCAPE ARCH. OF RECORD DESIGNER: BS	5		Drawing Title: EUCLID PLAYGROUND	Drawing No.	
	ADDRESS: 458 LINCOLN ROAD (ROW BETWEEN LENOX AV. & WASHINGTON AVE.)			ASSIST. CITY MNGR.: ERIC CARPENTER, P.E.	DRAWN BY: BS	4		Verify Scale: 0' = 1"	LA-215	
	TITLE: LINCOLN ROAD DISTRICT IMPROVEMENTS - SD			CIP DIRECTOR: DAVID MARTINEZ, P.E.	CHECKER: JC	3		FILED (DATE WHEN FILED) (DATE WHEN CHECKED)		
					SCALE: 1/16" = 1'	2		File Name: 2216-L-200-SET0 ENLARGED.dwg		
					JAMES CORNER FIELD OPERATIONS NEW YORK, NY 10018	1	09/30/2022	SD RECONCILIATION		
						NO	DATE	REVISION	APPD. BY	Date: 02/14/2020 Sheet: X of X



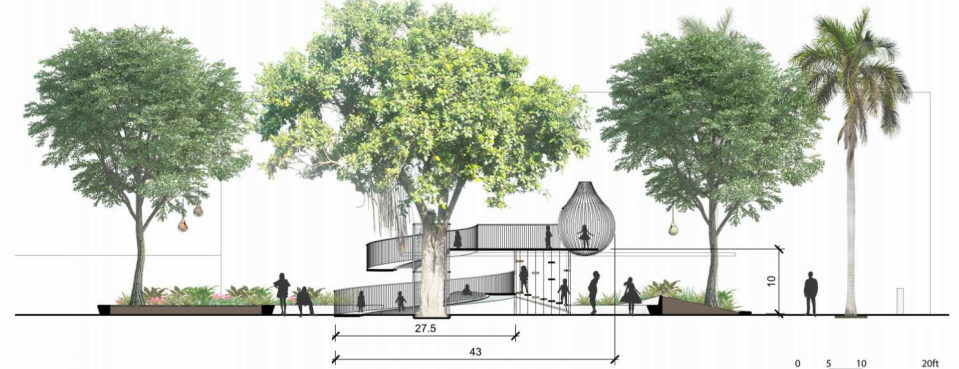
05 VIEW
SCALE: NTS



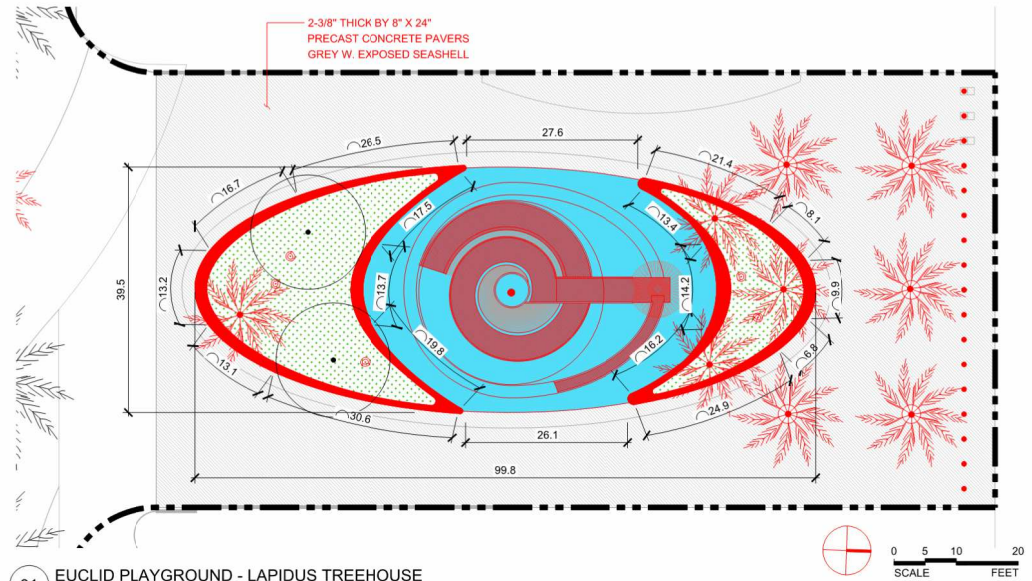
04 AXON
SCALE: NTS



03 AXON WITHOUT CANOPY
SCALE: NTS



02 SECTION
SCALE: 1" = 10'



01 EUCLID PLAYGROUND - LAPIDUS TREEHOUSE
SCALE: 1" = 10'