



[illegible]

RESTRICTED INFORMATION	
THIS DRAWING IS NOT TO BE REPRODUCED, REVEALED TO THIRD PARTIES, OR USED FOR THE MANUFACTURE OR SALE OF ANY PRODUCT DESCRIBED HEREIN WITHOUT PRIOR WRITTEN APPROVAL FROM LWV ELECTRONICS. COPYRIGHT 2022 © LWV ELECTRONICS	
DATE: 04-03-2024	
04-02-2024	
UPDATE SHEET LIST TABLE AND SHEET SS-301	
SUBMITTAL FOR REVIEW	
K.M.	
A	
DATE: 04-03-2024	
SOLICITATION NUMBER: 1	
DRAWN BY: C. ROBINSON	
SOLICITATION # 1	
PROJECT NUMBER: 1	
DESIGNED BY: K. WANGUN	
CONTRACT # 1	
SUBMITTED BY: K. WANGUN	
LWV PROJECT NUMBER: BPO42-0402	
SIZE: FILE NAME: 1	
SYSTEM SUPPLIER, DESIGNER & INSTALLER:	
ANDAZ HOTEL MIAMI BEACH	
SOUND SYSTEM INSTALLATION	
4041 COLLINS AVENUE	
MIAMI BEACH, FLORIDA 33140	
SHEET LIST TABLE	
SHEET IDENTIFICATION	
SS-001	
SHEET 02 OF 09	

RESTRICTED INFORMATION	
THIS DRAWING IS NOT TO BE REPRODUCED, REVEALED TO THIRD PARTIES, OR USED FOR THE MANUFACTURE OR SALE OF ANY PRODUCT DESCRIBED HEREIN WITHOUT PRIOR WRITTEN APPROVAL FROM LWV ELECTRONICS. COPYRIGHT 2022 © LWV ELECTRONICS	
DATE:	04-03-2024
SOLICITATION NUMBER:	
SOLICITATION #	
DRAWN BY:	K. WANGUN
CHECKED BY:	C. ROBINSON
DESIGNED BY:	K. WANGUN
PROJECT NUMBER:	
CONTRACT #	
LWV PROJECT NUMBER:	BPD04.0402
SUBMITTED BY:	K. WANGUN
FILE NAME:	
SIZE:	
SYSTEM SUPPLIER, DESIGNER & INSTALLER:	
ANDAZ HOTEL MIAMI BEACH SOUND SYSTEM INSTALLATION 4041 COLLINS AVENUE MIAMI BEACH, FLORIDA 33140 PHONE: (305) 375-6914	
LWV ELECTRONICS	
LWV	
SHEET IDENTIFICATION	
SS-001	
SHEET 02 OF 09	

RESTRICTED INFORMATION	
THIS DRAWING IS NOT TO BE REPRODUCED, REVEALED TO THIRD PARTIES, OR USED FOR THE MANUFACTURE OR SALE OF ANY PRODUCT DESCRIBED HEREIN WITHOUT PRIOR WRITTEN APPROVAL FROM LWV ELECTRONICS. COPYRIGHT 2022 © LWV ELECTRONICS	
04-03-2024 04-02-2024	
UPDATE SHEET LIST TABLE AND SHEET SS-301	
SUBMITTAL FOR REVIEW	
K.M.	
A	
DATE: 04-03-2024	
SOLICITATION NUMBER: 1	
DRAWN BY: C. ROBINSON	
SOLICITATION # 1	
PROJECT NUMBER: 1	
DESIGNED BY: K. WANGUN	
CONTRACT # 1	
SUBMITTED BY: K. WANGUN	
LWV PROJECT NUMBER: BPO4-0402	
SIZE: FILE NAME: 1	
SYSTEM SUPPLIER, DESIGNER & INSTALLER:	
ANDAZ HOTEL MIAMI BEACH SOUND SYSTEM INSTALLATION 4041 COLLINS AVENUE MIAMI BEACH, FLORIDA 33140 PHONE: (305) 375-6914	
LWV ELECTRONICS	
LWV	
SHEET IDENTIFICATION SS-001	
SHEET 02 OF 09	

RESTRICTED INFORMATION	
THIS DRAWING IS NOT TO BE REPRODUCED, REVEALED TO THIRD PARTIES, OR USED FOR THE MANUFACTURE OR SALE OF ANY PRODUCT DESCRIBED HEREIN WITHOUT PRIOR WRITTEN APPROVAL FROM LWV ELECTRONICS. COPYRIGHT 2022 © LWV ELECTRONICS	
04-03-2024 04-02-2024	
UPDATE SHEET LIST TABLE AND SHEET SS-301	
SUBMITTAL FOR REVIEW	
K.M.	
A	
DATE: 04-03-2024	
SOLICITATION NUMBER: 1	
DRAWN BY: C. ROBINSON	
SOLICITATION # 1	
PROJECT NUMBER: 1	
DESIGNED BY: K. WANGUN	
CONTRACT # 1	
SUBMITTED BY: K. WANGUN	
LWV PROJECT NUMBER: BPO4-0402	
SIZE: FILE NAME: 1	
SYSTEM SUPPLIER, DESIGNER & INSTALLER:	
ANDAZ HOTEL MIAMI BEACH SOUND SYSTEM INSTALLATION 4041 COLLINS AVENUE MIAMI BEACH, FLORIDA 33140 PHONE: (305) 375-6914	
LWV ELECTRONICS	
LWV	
SHEET IDENTIFICATION SS-001	
SHEET 02 OF 09	

RESTRICTED INFORMATION	
THIS DRAWING IS NOT TO BE REPRODUCED, REVEALED TO THIRD PARTIES, OR USED FOR THE MANUFACTURE OR SALE OF ANY PRODUCT DESCRIBED HEREIN WITHOUT PRIOR WRITTEN APPROVAL FROM LWV ELECTRONICS. COPYRIGHT 2022 © LWV ELECTRONICS	
04-03-2024 04-02-2024	
UPDATE SHEET LIST TABLE AND SHEET SS-301	
SUBMITTAL FOR REVIEW	
K.M.	
A	
DATE: 04-03-2024	
SOLICITATION NUMBER: 1	
DRAWN BY: C. ROBINSON	
SOLICITATION # 1	
PROJECT NUMBER: 1	
DESIGNED BY: K. WANGUN	
CONTRACT # 1	
SUBMITTED BY: K. WANGUN	
LWV PROJECT NUMBER: BPO42-0402	
SIZE: FILE NAME: 1	
SYSTEM SUPPLIER, DESIGNER & INSTALLER:	
ANDAZ HOTEL MIAMI BEACH SOUND SYSTEM INSTALLATION 4041 COLLINS AVENUE MIAMI BEACH, FLORIDA 33140 PHONE: (305) 375-6914	
LWV ELECTRONICS	
LWV	
SHEET IDENTIFICATION SS-001	
SHEET 02 OF 09	

RESTRICTED INFORMATION	
THIS DRAWING IS NOT TO BE REPRODUCED, REVEALED TO THIRD PARTIES, OR USED FOR THE MANUFACTURE OR SALE OF ANY PRODUCT DESCRIBED HEREIN WITHOUT PRIOR WRITTEN APPROVAL FROM LWV ELECTRONICS. COPYRIGHT 2022 © LWV ELECTRONICS	
04-03-2024 04-02-2024	
UPDATE SHEET LIST TABLE AND SHEET SS-301	
SUBMITTAL FOR REVIEW	
K.M.	
A	
DATE: 04-03-2024	
SOLICITATION NUMBER: 1	
DRAWN BY: C. ROBINSON	
SOLICITATION # 1	
PROJECT NUMBER: 1	
DESIGNED BY: K. WANGUN	
CONTRACT # 1	
SUBMITTED BY: K. WANGUN	
LWV PROJECT NUMBER: BPO4-0402	
SIZE: FILE NAME: 1	
SYSTEM SUPPLIER, DESIGNER & INSTALLER:	
ANDAZ HOTEL MIAMI BEACH SOUND SYSTEM INSTALLATION 4041 COLLINS AVENUE MIAMI BEACH, FLORIDA 33140 PHONE: (305) 375-6914	
LWV ELECTRONICS	
LWV	
SHEET IDENTIFICATION SS-001	
SHEET 02 OF 09	

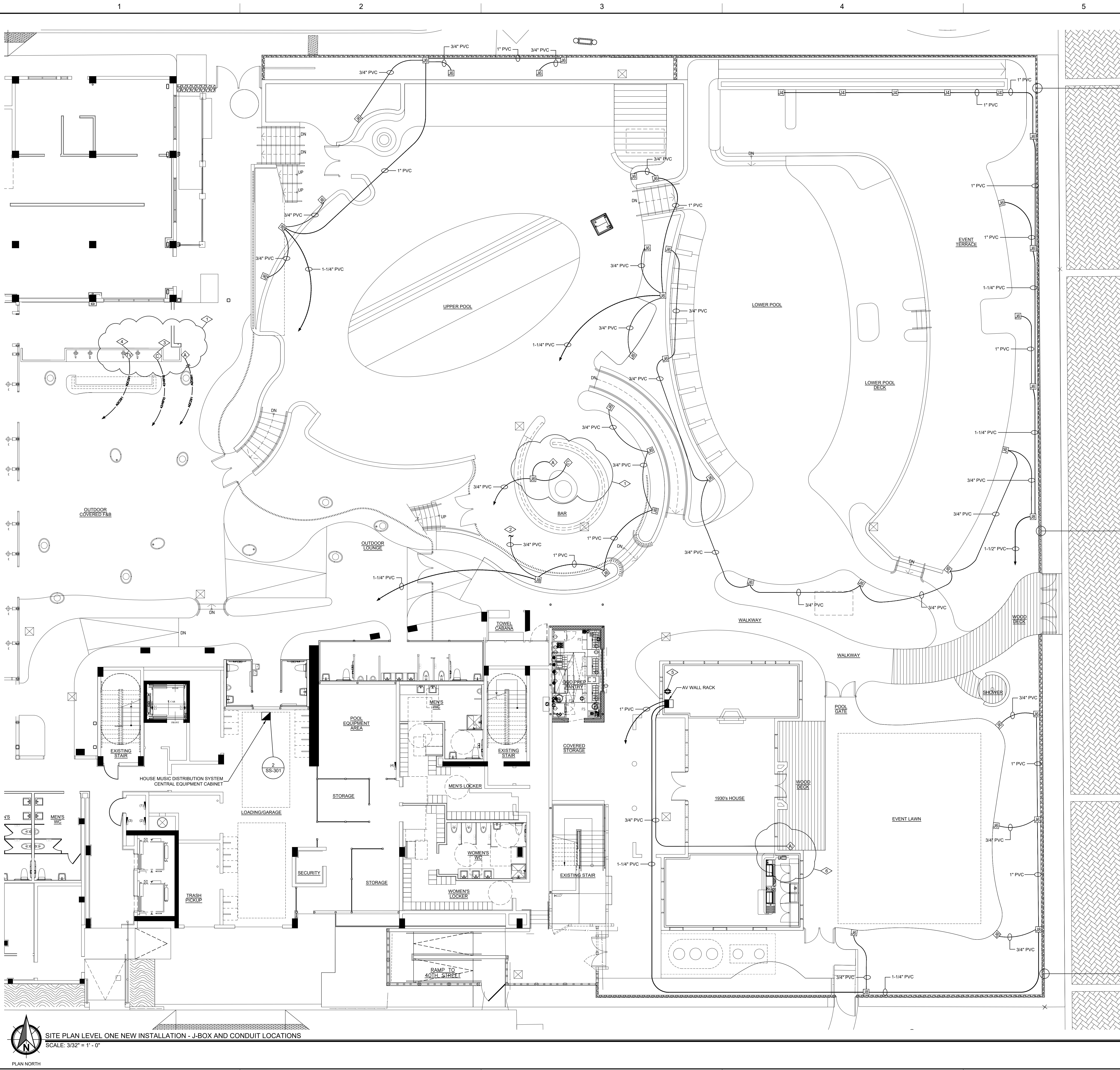
NOTE: NOT ALL SYMBOLS MAY APPLY

NOTE: NOT ALL SYMBOLS MAY APPLY

NOTE: NOT ALL SYMBOLS MAY APPLY

SUBMITTAL FOR REVIEW

C:\ACAD DRAWING FILES - CURRENT CAD WORKING\BP024 0301 - ANDAZ HOTEL MIAMI BEACH - SS - 04-02-2024\CORRENTANDAZ HOTEL MIAMI BEACH - SS - 04-02-2024



SITE PLAN NEW INSTALL J-BOX AND CONDUIT SYMBOL LEGEND	
SYMBOL	DESCRIPTION
	JUNCTION BOX - TYPE "JB" WET LOCATION DIRECT BURIAL 6" X 6" X 4" SCREW COVER JUNCTION/PULL BOX. SEE DETAIL  SS-401 FOR MOUNTING DETAILS.
	JUNCTION BOX - TYPE "JB" WET LOCATION DIRECT BURIAL 6" X 6" X 4" SCREW COVER JUNCTION/PULL BOX. SEE DETAIL  SS-401 FOR MOUNTING DETAILS.
	AUDIOVISUAL RECEPTACLE PLATE - TYPE "A" NEW SINGLE GANG FLUSH WALL MOUNTED DEVICE BOX FOR AUDIOVISUAL RECEPTACLE PLATE. COORDINATE MOUNTING HEIGHT A.F.F. TO MATCH LOCAL AC WALL RECEPTABLES. SEE ELECTRICAL CONTRACTOR NOTES FOR REQUIREMENTS. SEE SHEET  SS-301 FOR DEVICE PLATE DETAIL.
	AUDIO SIGNAL CABLE INTERFACE PLATE - TYPE "TV" SINGLE GANG DEVICE BOX FLUSH WALL MOUNTED BEHIND TERRACE BAR TELEVISION DISPLAY FOR AUDIO SIGNAL CABLE INTERFACE.
	CONTROL PANEL - TYPE "C" NEW SINGLE GANG FLUSH WALL MOUNTED DEVICE BOX FOR SYMETRIX, ARC-3 AV SYSTEM CONTROL PANEL. COORDINATE LOCATION AND MOUNTING HEIGHT A.F.F. TO MATCH LOCAL LIGHTING CONTROL SWITCHES. SEE ELECTRICAL CONTRACTOR NOTES FOR REQUIREMENTS. SEE DETAIL  SS-301 FOR DEVICE PANEL DETAIL.
	HOUSE / EVENT LAWN SOUND SYSTEMS EQUIPMENT CABINET MIDDLE ATLANTIC EWR-10-17 SOUND SYSTEM WALL MOUNTED EQUIPMENT RACK LOCATED IN 1930'S HOUSE UTILITY ROOM. MOUNT BOTTOM OF CABINET BACKCAN 42" A.F.F. SEE ELECTRICAL CONTRACTOR NOTES FOR REQUIREMENTS. SEE DETAIL  SS-301
	HOUSE MUSIC DISTRIBUTION SYSTEM CENTRAL EQUIPMENT CABINET PREVIOUS LOCATION OF HOUSE MUSIC DISTRIBUTION SYSTEM CENTRAL EQUIPMENT CABINET, REPLACED WITH ATLAS 540-25 FLOOR STANDING EQUIPMENT CABINET. SEE DETAIL  SS-301
CABLE	DESCRIPTION
	WEST PENN #AQC291B - AUDIO SIGNAL CABLE
	WEST PENN #AQ225 - LOUDSPEAKER CABLE
	WEST PENN #AQ227B - LOUDSPEAKER CABLE
	WEST PENN #4246FIO - CONTROL CABLE
NOTE: NOT ALL SYMBOLS MAY APPLY	

#### GENERAL NOTES

- INDICATES ROUTING OF CABLE TO EXISTING HOUSE MUSIC DISTRIBUTION SYSTEM EQUIPMENT CABINET LOCATED IN 1ST FLOOR LOADING/GARAGE UNLESS OTHERWISE NOTED.
- INDICATES NUMBER OF CABLES OF THE SPECIFIC TYPE REQUIRED. (A QUANTITY OF 3 ARE SHOWN IN THIS EXAMPLE.)
- AUDIOVISUAL JUNCTION AND DEVICES BOX LOCATIONS INDICATE INTENT. ELECTRICAL CONTRACTOR TO COORDINATE AND ADJUST LOCATIONS TO ADDRESS STRUCTURAL AND LANDSCAPE CONSTRAINTS.

#### SPECIFIC NOTES

- CONFIRM LOCATION FOR BAR CONTROL AND AUDIO SIGNAL DEVICE BOXES WITH OWNER/ARCHITECT.
- PVC LINK BETWEEN BURIED JUNCTION BOX AND BAR OVERHEAD STRUCTURE LOUDSPEAKER DISTRIBUTION CHASE. SEE SHEET SS-401 DETAILS 1, 2 & 3.
- LOCATE CONTROL DEVICE BOX ADJACENT TO TERRACE BAR P.O.S. STATION.
- ROUTE SIGNAL CABLE BEHIND TERRACE BAR TELEVISION DISPLAY FOR AUDIO INTERFACE.
- PROVIDE 1 DEDICATED 120-VAC, 20-AMP CIRCUIT TERMINATING TO FLUSH WALL MOUNTED DUPLEX AC RECEPTACLE.
- CONFIRM LOCATION OF AUDIO SIGNAL RECEPTACLE FOR EVENT LAWN WITH OWNER / ARCHITECT.

#### GENERAL CONTRACTOR NOTES

- GENERAL CONTRACTOR TO PATCH OR REPAIR ABANDONED AUDIO VISUAL DEVICE WALL OR CEILING STRUCTURE AS MAY BE REQUIRED.
- GENERAL CONTRACTOR TO PROVIDE CONCRETE PADS FOR MOUNTING LOUDSPEAKER ASSEMBLIES IN LANDSCAPE LOCATIONS. SEE SHEET SS-402 FOR MOUNTING DETAILS.

#### ELECTRICAL CONTRACTOR NOTES

- ELECTRICAL CONTRACTOR TO PROVIDE INSTALLATION OF NEW AV CABLES AS SUPPLIED TO THE ELECTRICAL CONTRACTOR BY THE AV CONTRACTOR.  
A 3 FT. CABLE SERVICE LOOP TO BE PROVIDED AT EACH DEVICE/BOX LOCATION, AND A 12 FT. SERVICE LOOP TO BE PROVIDED AT THE SOUND SYSTEM CENTRAL EQUIPMENT CABINET.
- ELECTRICAL CONTRACTOR TO PROVIDE SUPPLY AND INSTALLATION OF AUDIOVISUAL SYSTEMS DEVICE BOX/JUNCTION BOX, CONDUIT, WIRE RACEWAY AND COLLECTION GUTTERS AS MAY BE REQUIRED.
- ELECTRICAL CONTRACTOR TO INSTALL AUDIO SIGNAL AND CONTROL CABLEING IN CONTINUOUS RUNS AS SHOWN ON DRAWINGS WITHOUT SPLICES. LOUDSPEAKER CABLEING MAY BE SPLICED AS NECESSARY.
- ELECTRICAL CONTRACTOR TO PROVIDE INSTALLATION OF LOUDSPEAKER PRE-CONSTRUCTION BRACKETS AS SUPPLIED TO THE ELECTRICAL CONTRACTOR BY THE AV CONTRACTOR, MOUNTING TO WALL AND CEILING STRUCTURAL FRAMING.

#### OUTDOOR AV SYSTEMS CABLE CHASE REQUIREMENTS

- ALL AV SIGNAL, CONTROL AND LOUDSPEAKER CABLEING EXTENDING THROUGH OUTDOOR AREAS TO BE HOUSED IN PVC CABLE CHASE.
- PVC CABLE CHASE SCHEDULE 40 SIZED 3/4" UNLESS OTHERWISE NOTED.
- PVC CABLE CHASE TO BE INSTALLED BELOW GRADE AS CONDITIONS PERMIT.

RESTRICTED INFORMATION  
THIS DRAWING IS NOT TO BE REPRODUCED, REVEALED TO THIRD PARTIES, OR USED FOR THE MANUFACTURE OR SALE OF ANY PRODUCT DESCRIBED HEREIN WITHOUT PRIOR WRITTEN APPROVAL FROM LWW ELECTRONICS. COPYRIGHT 2023 © LWW ELECTRONICS

DATE: 04-03-2024  
DESIGNED BY: K. MANJUN  
DRAWN BY: K. MANJUN  
CHECKED BY: K. MANJUN  
SUBMITTED BY: K. MANJUN  
FILE NAME: 04-02-2024

DATE: 04-03-2024  
SUBMITTAL FOR REVIEW

DATE: 04-02-2024

SYSTEM SUPPLIER, DESIGNER & INSTALLER  
**LWW ELECTRONICS**  
1101 S. 17th Ave., Suite 101  
DENVER, CO 80202  
PHONE: (303) 375-9414

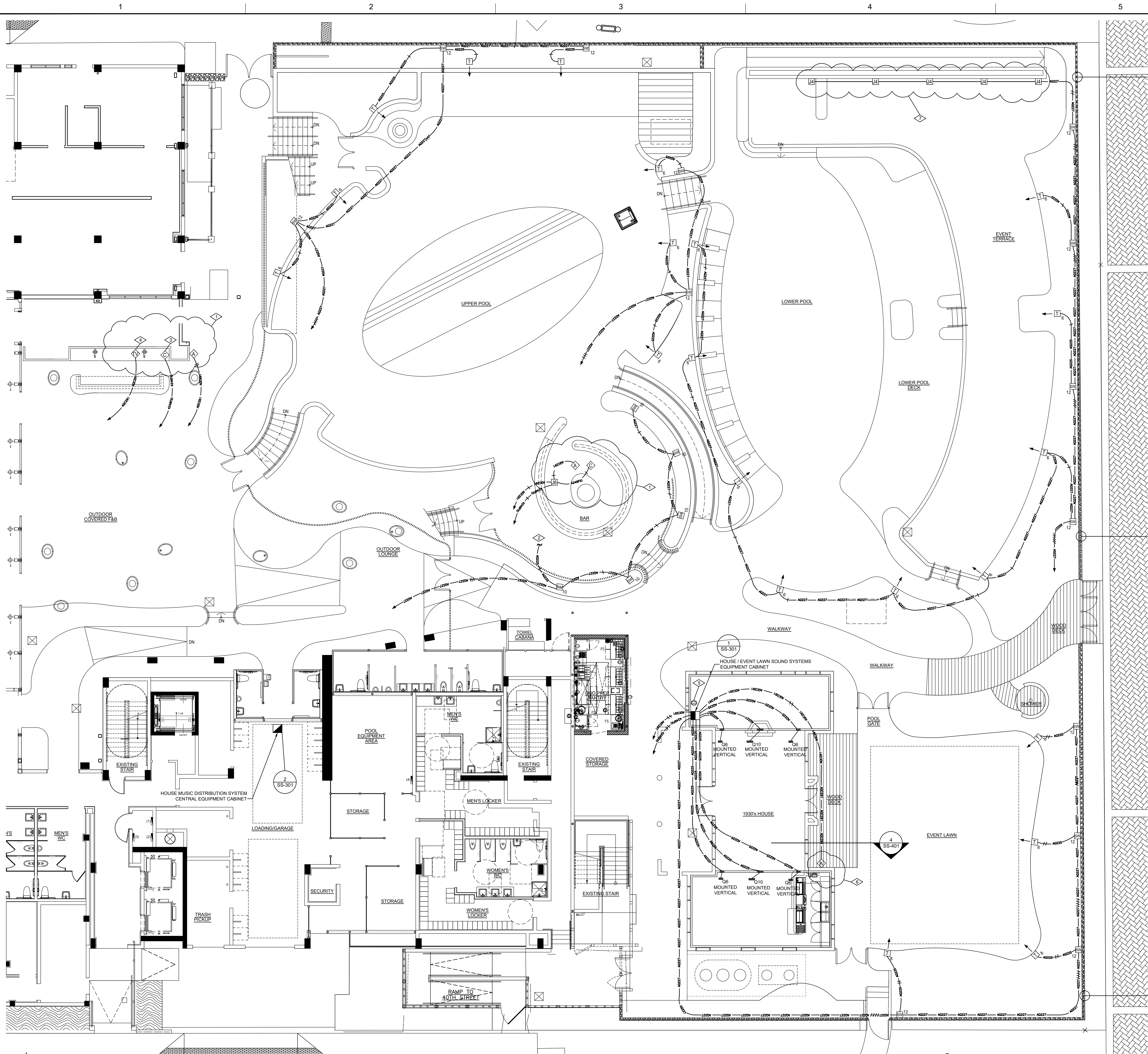
ANDAZ HOTEL MIAMI BEACH  
SOUND SYSTEM INSTALLATION  
404 COLLINS AVENUE  
MIAMI BEACH, FLORIDA 33140  
SITE PLAN LEVEL ONE NEW INSTALLATION - J-BOX AND CONDUIT LOCATIONS

SHEET IDENTIFICATION  
**SS-101**  
SHEET 04 OF 09

DATE: 04-02-2024  
SUBMITTAL FOR REVIEW



C:\ACAD DRAWING FILES - CURRENT\CAD WORKING\BPD24\3301 - ANDAZ HOTEL MIAMI BEACH - SS - 04-02-2024\3301-ANDAZ HOTEL MIAMI BEACH - SS - 04-02-2024



## SITE PLAN NEW INSTALL SPEAKER, DEVICE AND CABLE SYMBOL LEGEND

SYMBOL	DESCRIPTION
	AUDIO SIGNAL RECEPTACLE PLATE - TYPE "A" NEW SINGLE GANG FLUSH WALL MOUNTED DEVICE BOX AND SIGNAL CABLES FOR AUDIO RECEPTACLE PLATE. COORDINATE MOUNTING HEIGHT A.F.F. TO MATCH LOCAL AC WALL RECEPTACLES. SEE ELECTRICAL CONTRACTOR NOTES FOR REQUIREMENTS. SEE SHEET  FOR DEVICE PLATE DETAIL.
	CONTROL PANEL - TYPE "C" NEW SINGLE GANG FLUSH WALL MOUNTED DEVICE BOX AND CONTROL CABLE FOR SYMMETRIX ARD-3K AV SYSTEM CONTROL PANEL. COORDINATE LOCATION AND MOUNTING HEIGHT A.F.F. TO MATCH LOCAL LIGHTING CONTROL SWITCHES. SEE ELECTRICAL CONTRACTOR NOTES FOR REQUIREMENTS. SEE DETAIL  FOR DEVICE PANEL DETAIL.
	AUDIO SIGNAL CABLE INTERFACE PLATE - TYPE "TV" SINGLE GANG DEVICE BOX FLUSH WALL MOUNTED BEHIND TERRACE BAR TELEVISION DISPLAY FOR AUDIO SIGNAL CABLE/INTERFACE.
	LOUDSPEAKER - TYPE "T6" JAMES OT660-70 LOUDSPEAKER W/OT660-EM, EXTERNAL MOUNT BASE PLATE, PLACED ON CONCRETE STEPPINGSTONE BURIED 2' BELOW LANDSCAPE GRADING. SEE DETAIL
	LOUDSPEAKER - TYPE "T8" JAMES OT880 LOUDSPEAKER W/OT880-EM, EXTERNAL MOUNT BASE PLATE, PLACED ON CONCRETE STEPPINGSTONE BURIED 2' BELOW LANDSCAPE GRADING. SEE DETAIL
	SUBWOOFER - TYPE "SW10" JAMES EMB10-70-M SUBWOOFER, PLACED ON CONCRETE STEPPINGSTONE SET PROUD OF LANDSCAPE GRADING. SEE DETAIL
	SUBWOOFER - TYPE "SW12" JAMES EMB12-70-M SUBWOOFER, PLACED ON CONCRETE STEPPINGSTONE SET PROUD OF LANDSCAPE GRADING. SEE DETAIL
	LOUDSPEAKER - TYPE "O6" JAMES OX620 LOUDSPEAKER, MOUNTED FLUSH INTO FACE OF WALL. W/OX620PB PRE-CONSTRUCTION BOARD.
	LOUDSPEAKER - TYPE "O10" JAMES OX1020A SUBWOOFER, MOUNTED FLUSH INTO FACE OF WALL. W/OX1020PB PRE-CONSTRUCTION BOARD.
	HOUSE / EVENT LAWN SOUND SYSTEMS EQUIPMENT CABINET MIDDLE ATLANTIC, EWR-10-17 SOUND SYSTEM WALL MOUNTED EQUIPMENT RACK LOCATED IN 1930'S HOUSE UTILITY ROOM. MOUNT BOTTOM OF CABINET BACK ON A.F.F. SEE ELECTRICAL CONTRACTOR NOTES FOR REQUIREMENTS. SEE DETAIL
	HOUSE MUSIC DISTRIBUTION SYSTEM CENTRAL EQUIPMENT CABINET PREVIOUS LOCATION OF HOUSE MUSIC DISTRIBUTION SYSTEM CENTRAL EQUIPMENT CABINET, REPLACED WITH ATLAS 540-25 FLOOR STANDING EQUIPMENT CABINET. SEE DETAIL
CABLE	DESCRIPTION
	WEST PENN #A0231B - AUDIO SIGNAL CABLE
	WEST PENN #A0225 - LOUDSPEAKER CABLE
	WEST PENN #A0227B - LOUDSPEAKER CABLE
	WEST PENN #A04970 - CONTROL CABLE
NOTE: NOT ALL SYMBOLS MAY APPLY	

### GENERAL NOTES

- INDICATES ROUTING OF CABLE TO EXISTING HOUSE MUSIC DISTRIBUTION SYSTEM EQUIPMENT CABINET LOCATED IN 1ST FLOOR LOADING/GARAGE UNLESS OTHERWISE NOTED.
- INDICATES NUMBER OF CABLES OF THE SPECIFIC TYPE REQUIRED. (A QUANTITY OF 3 ARE SHOWN IN THIS EXAMPLE.)
- AUDIOVISUAL JUNCTION AND DEVICES BOX LOCATIONS INDICATE INTENT. ELECTRICAL CONTRACTOR TO COORDINATE AND ADJUST LOCATIONS TO ADDRESS STRUCTURAL AND LANDSCAPE CONSTRAINTS.

### SPECIFIC NOTES

- CONFIRM LOCATION OF BAR CONTROL AND AUDIO SIGNAL DEVICE BOXES WITH OWNER / ARCHITECT.
- PVC LINK BETWEEN BURIED JUNCTION BOX AND BAR OVERHEAD STRUCTURE LOUDSPEAKER DISTRIBUTION CHASE. SEE SHEET SS-401 DETAILS 1, 2 & 3.
- LOCATE CONTROL DEVICE BOX ADJACENT TO TERRACE BAR P.O.S. STATION.
- ROUTE SIGNAL CABLE BEHIND TERRACE BAR TELEVISION DISPLAY FOR AUDIO INTERFACE.
- PROVIDE 1 DEDICATED 120-VAC, 20-AMP CIRCUIT TERMINATING TO FLUSH WALL MOUNTED DUPLEX AC RECEPTACLE.
- CONFIRM LOCATION OF AUDIO SIGNAL RECEPTACLE FOR EVENT LAWN WITH OWNER / ARCHITECT.
- CABANA CONFIGURATIONS TO BE DETERMINED BY OWNER/ARCHITECT.

### GENERAL CONTRACTOR NOTES

- GENERAL CONTRACTOR TO PATCH OR REPAIR ABANDONED AUDIO VISUAL DEVICE WALL OR CEILING STRUCTURE AS MAY BE REQUIRED.

### ELECTRICAL CONTRACTOR NOTES

- ELECTRICAL CONTRACTOR TO PROVIDE INSTALLATION OF NEW AV CABLES AS SUPPLIED TO THE ELECTRICAL CONTRACTOR BY THE AV CONTRACTOR.  
A 3 FT. CABLE SERVICE LOOP TO BE PROVIDED AT EACH DEVICE/BOX LOCATION, AND A 12 FT. SERVICE LOOP TO BE PROVIDED AT THE SOUND SYSTEM CENTRAL EQUIPMENT CABINET.
- ELECTRICAL CONTRACTOR TO PROVIDE SUPPLY AND INSTALLATION OF AUDIOVISUAL SYSTEMS DEVICE BOX/JUNCTION BOX, CONDUIT, WIRE RACEWAY AND COLLECTION GUTTERS AS MAY BE REQUIRED.
- ELECTRICAL CONTRACTOR TO INSTALL AUDIO SIGNAL AND CONTROL CABLEING IN CONTINUOUS RUNS AS SHOWN ON DRAWINGS WITHOUT SPLICES. LOUDSPEAKER CABLEING MAY BE SPLICED AS NECESSARY.
- ELECTRICAL CONTRACTOR TO PROVIDE INSTALLATION OF LOUDSPEAKER PRE-CONSTRUCTION BRACKETS AS SUPPLIED TO THE ELECTRICAL CONTRACTOR BY THE AV CONTRACTOR, MOUNTING TO WALL AND CEILING STRUCTURAL FRAMING.

### OUTDOOR AV SYSTEMS CABLE CHASE REQUIREMENTS

- ALL AV SIGNAL, CONTROL, AND LOUDSPEAKER CABLEING EXTENDING THROUGH OUTDOOR AREAS TO BE HOUSED IN PVC CABLE CHASE.
- PVC CABLE CHASE SCHEDULE 40 SIZED 3/4" UNLESS OTHERWISE NOTED.
- PVC CABLE CHASE TO BE INSTALL BELOW GRADE AS CONDITIONS PERMIT.

RESTRICTED INFORMATION  
THIS DRAWING IS NOT TO BE REPRODUCED, REVEALED TO THIRD PARTIES, OR USED FOR THE MANUFACTURE OR SALE OF ANY PRODUCT DESCRIBED HEREIN WITHOUT PRIOR WRITTEN APPROVAL FROM LWW ELECTRONICS. COPYRIGHT 2023 © LWW ELECTRONICS

DATE	DESCRIPTION	MARK	BY
04-03-2024	UPDATE TERRACE BAR PLATE LAYOUT AND SPEAKER CABLEING. UPDATE LEGEND	K.M.	K.M.
04-02-2024	SUBMITAL FOR REVIEW	K.M.	K.M.

DESIGNED BY: K. MANJUN	SOLUTION NUMBER: SS-301
DRAWN BY: K. MANJUN	CONTRACT NUMBER: SS-301
CHECKED BY: K. MANJUN	CONTRACT #: SS-301
SUBMITTED BY: K. MANJUN	LWW PROJECT NUMBER: BPD24.002
FILE NAME: BPD24.002	DATE: 04-03-2024

SYSTEM SUPPLIER, DESIGNER & INSTALLER  
**LWW ELECTRONICS**  
4041 COLLINS AVENUE  
DENVER, CO 80226  
PHONE: (303) 375-9414

ANDAZ HOTEL MIAMI BEACH  
SOUND SYSTEM INSTALLATION  
4041 COLLINS AVENUE  
MIAMI BEACH, FLORIDA 33140

SITE PLAN LEVEL ONE NEW INSTALLATION -  
SPEAKER LOCATIONS AND CABLE ROUTING

SHEET  
IDENTIFICATION  
SS-102  
SHEET 05 OF 09

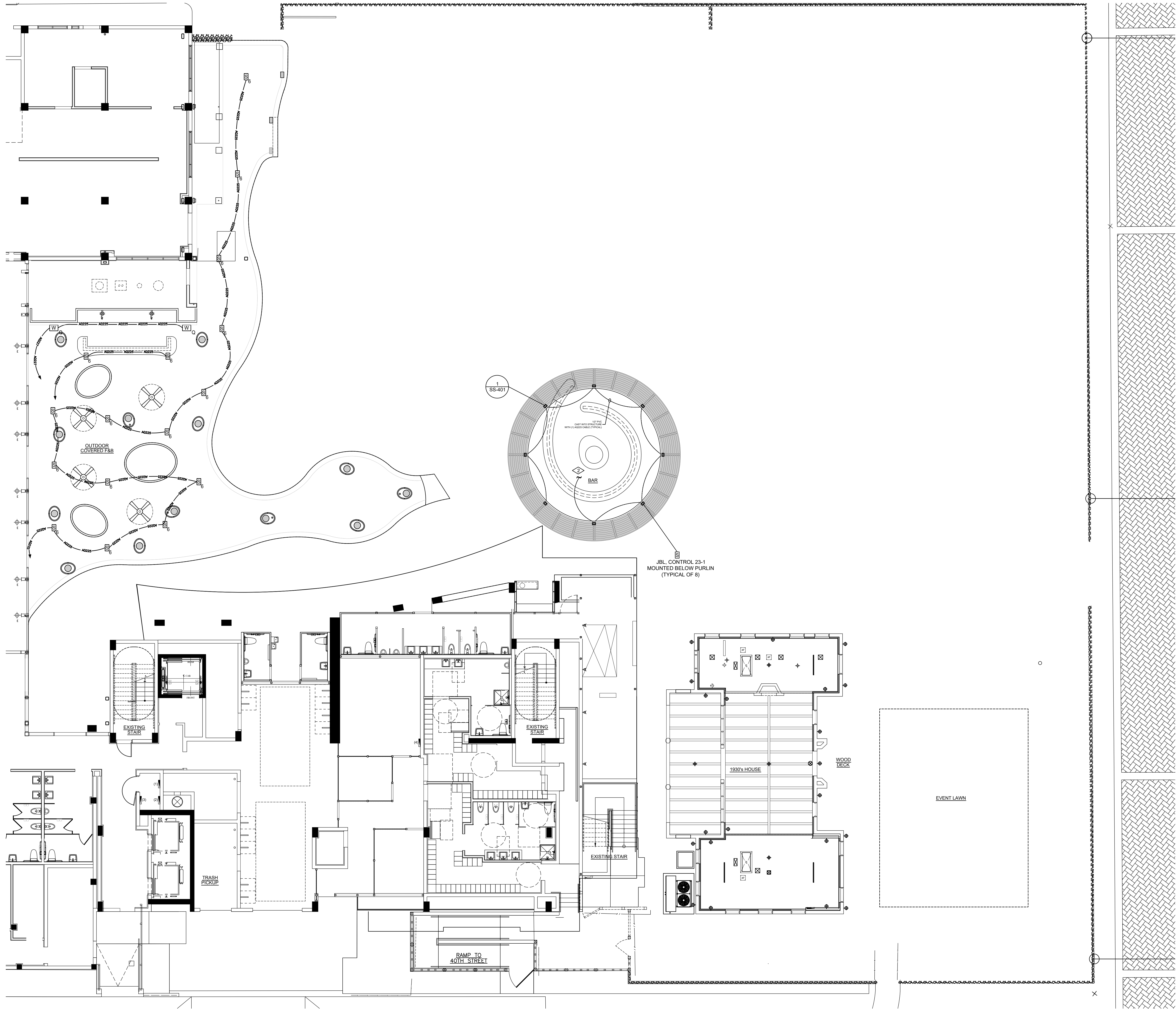
SUBMITAL FOR REVIEW



SITE PLAN LEVEL ONE NEW INSTALLATION - SPEAKER LOCATIONS AND CABLE ROUTING  
SCALE: 3/32" = 1' - 0"



C:\ACAD DRAWING FILES - CURRENT\CAD WORKING\BP024\0301 - ANDAZ HOTEL MIAMI BEACH - SS - 04-02-2024\0301 - ANDAZ HOTEL MIAMI BEACH - SS - 04-02-2024



LEVEL ONE REFLECTED CEILING PLAN NEW INSTALLATION SYMBOL AND CABLE LEGEND	
SYMBOL	DESCRIPTION
	LOUDSPEAKER - TYPE "S6" JAMES: 62ASX LOUDSPEAKER, W/DASX-PB PRE-CONSTRUCTION MOUNTING BRACKET ATTACHED TO FACE OF CEILING FRAMING STRUCTURE PRIOR TO INSTALLATION OF FINISHED CEILING SURFACE.
	LOUDSPEAKER - TYPE "C23" JBL: CONTROL 23-1 LOUDSPEAKER MOUNTED BELOW PURLIN. SEE SHEET SS-401 FOR CONDUIT MOUNTING DETAILS.
	LOUDSPEAKER - TYPE "WQ" JAMES: 0X1010 SUBWOOFER W/DX1010/PB PRE-CONSTRUCTION MOUNTING BRACKET ATTACHED TO FACE OF CEILING FRAMING STRUCTURE PRIOR TO INSTALLATION OF FINISHED CEILING SURFACE.
CABLE	DESCRIPTION
	WEST PENN #A0225 - LOUDSPEAKER CABLE
	WEST PENN #A0227B - LOUDSPEAKER CABLE
NOTE: NOT ALL SYMBOLS MAY APPLY	

#### GENERAL NOTES

- INDICATES ROUTING OF CABLE TO EXISTING HOUSE MUSIC DISTRIBUTION SYSTEM EQUIPMENT CABINET LOCATED IN 1ST FLOOR LOADING/GARAGE UNLESS OTHERWISE NOTED.
- INDICATES NUMBER OF CABLES OF THE SPECIFIC TYPE REQUIRED. (A QUANTITY OF 3 ARE SHOWN IN THIS EXAMPLE.)
- AUDIOVISUAL JUNCTION AND DEVICES BOX LOCATIONS INDICATE INTENT, ELECTRICAL CONTRACTOR TO COORDINATE AND ADJUST LOCATIONS TO ADDRESS STRUCTURAL AND LANDSCAPE CONSTRAINTS.

#### SPECIFIC NOTES

- PVC LINK BETWEEN BURIED JUNCTION BOX AND BAR OVERHEAD STRUCTURE LOUDSPEAKER DISTRIBUTION CHASE. SEE SHEET SS-401 DETAILS 1, 2 & 3.

#### GENERAL CONTRACTOR NOTES

- GENERAL CONTRACTOR TO PATCH OR REPAIR ABANDONED AUDIO VISUAL DEVICE WALL OR CEILING STRUCTURE AS MAY BE REQUIRED.

#### ELECTRICAL CONTRACTOR NOTES

- ELECTRICAL CONTRACTOR TO PROVIDE INSTALLATION OF NEW AV CABLES AS SUPPLIED TO THE ELECTRICAL CONTRACTOR BY THE AV CONTRACTOR.  
A 3 FT. CABLE SERVICE LOOP TO BE PROVIDED AT EACH DEVICE BOX LOCATION, AND A 12 FT. SERVICE LOOP TO BE PROVIDED AT THE SOUND SYSTEM CENTRAL EQUIPMENT CABINET.
- ELECTRICAL CONTRACTOR TO PROVIDE SUPPLY AND INSTALLATION OF AUDIOVISUAL SYSTEMS DEVICE BOX/JUNCTION BOX, CONDUIT, WIRE RACEWAY AND COLLECTION GUTTERS AS MAY BE REQUIRED.
- ELECTRICAL CONTRACTOR TO INSTALL AUDIO SIGNAL AND CONTROL CABLING IN CONTINUOUS RUNS AS SHOWN ON DRAWINGS WITHOUT SPLICES. LOUDSPEAKER CABLING MAY BE SPLICED AS NECESSARY.
- ELECTRICAL CONTRACTOR TO PROVIDE INSTALLATION OF LOUDSPEAKER PRE-CONSTRUCTION BRACKETS AS SUPPLIED TO THE ELECTRICAL CONTRACTOR BY THE AV CONTRACTOR, MOUNTING TO WALL AND CEILING STRUCTURAL FRAMING.

#### OUTDOOR AV SYSTEMS CABLE CHASE REQUIREMENTS

- ALL AV SIGNAL, CONTROL AND LOUDSPEAKER CABLING EXTENDING THROUGH OUTDOOR AREAS TO BE HOUSED IN PVC CABLE CHASE.
- PVC CABLE CHASE SCHEDULE 40 SIZED 1/2" UNLESS OTHERWISE NOTED.
- PVC CABLE CHASE TO BE INSTALL BELOW GRADE AS CONDITIONS PERMIT.

RESTRICTED INFORMATION  
THIS DRAWING IS NOT TO BE REPRODUCED, REVEALED TO THIRD PARTIES, OR USED FOR THE MANUFACTURE OR SALE OF ANY PRODUCT DESCRIBED HEREIN WITHOUT PRIOR WRITTEN APPROVAL FROM LWW ELECTRONICS. COPYRIGHT 2023 LWW ELECTRONICS

DATE	DESCRIPTION	MARK	BY
04-02-2024	UPDATE BAR SEPARATE LAYOUT AND RCP BACKGROUND		K.M.
04-02-2024	SUBMITTAL FOR REVIEW		K.M.

DESIGNED BY: K. MANJUN	SOLICITATION NUMBER: 0301
DRAWN BY: K. MANJUN	CONTRACT NUMBER: 0301
CHECKED BY: K. MANJUN	LWW PROJECT NUMBER: BP024.002
SUBMITTED BY: K. MANJUN	FILE NAME: ANDAZ HOTEL MIAMI BEACH - SS - 04-02-2024

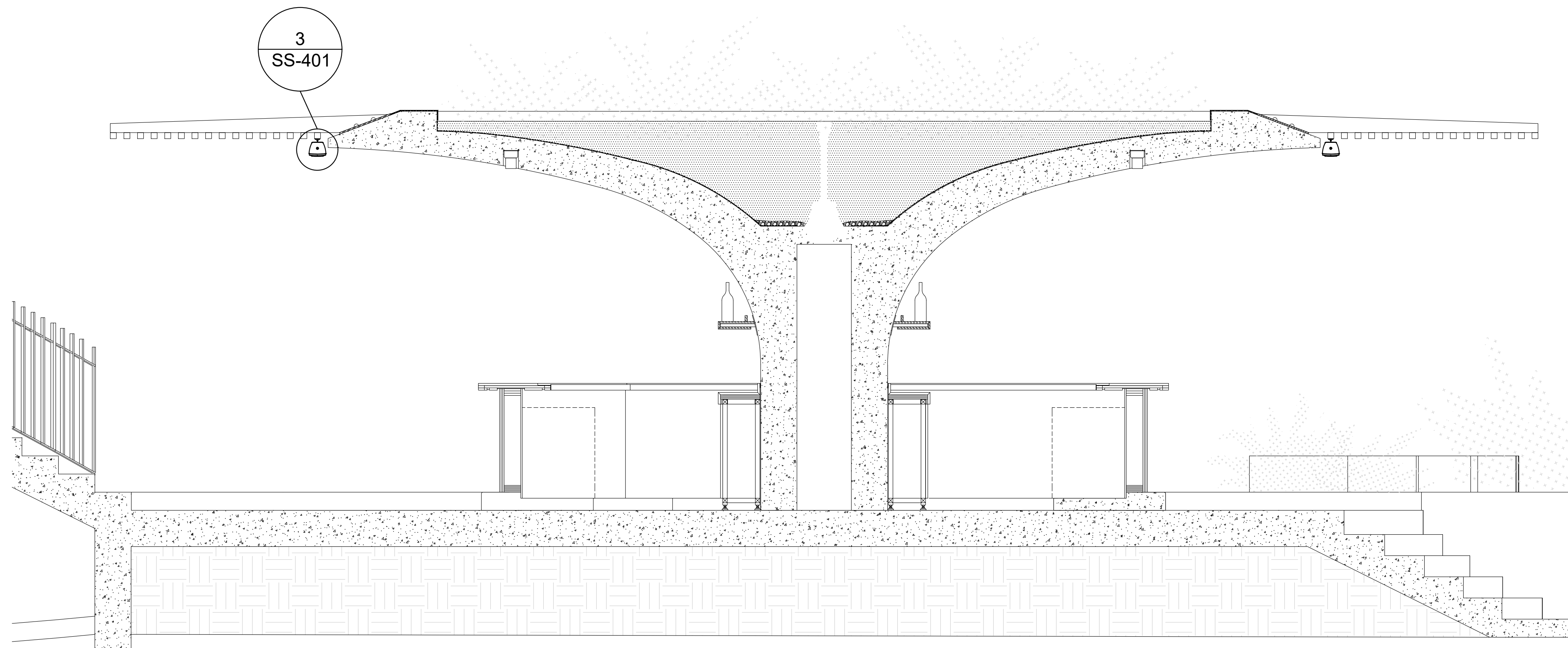
SYSTEMS SUPPLIER, DESIGNER & INSTALLER  
**LWW ELECTRONICS**  
1101 T. BLOOM 3, UNIT 1  
DENVER, CO 80209  
PHONE: (303) 375-9414  
#BPO24.002

ANDAZ HOTEL MIAMI BEACH  
SOUND SYSTEM INSTALLATION  
4041 COLLINS AVENUE  
MIAMI BEACH, FLORIDA 33140  
REFLECTED CEILING PLAN LEVEL ONE POOL BAR STRUCTURE - J-BOX AND CONDUIT LAYOUT, SPEAKER LOCATIONS AND CABLE ROUTING

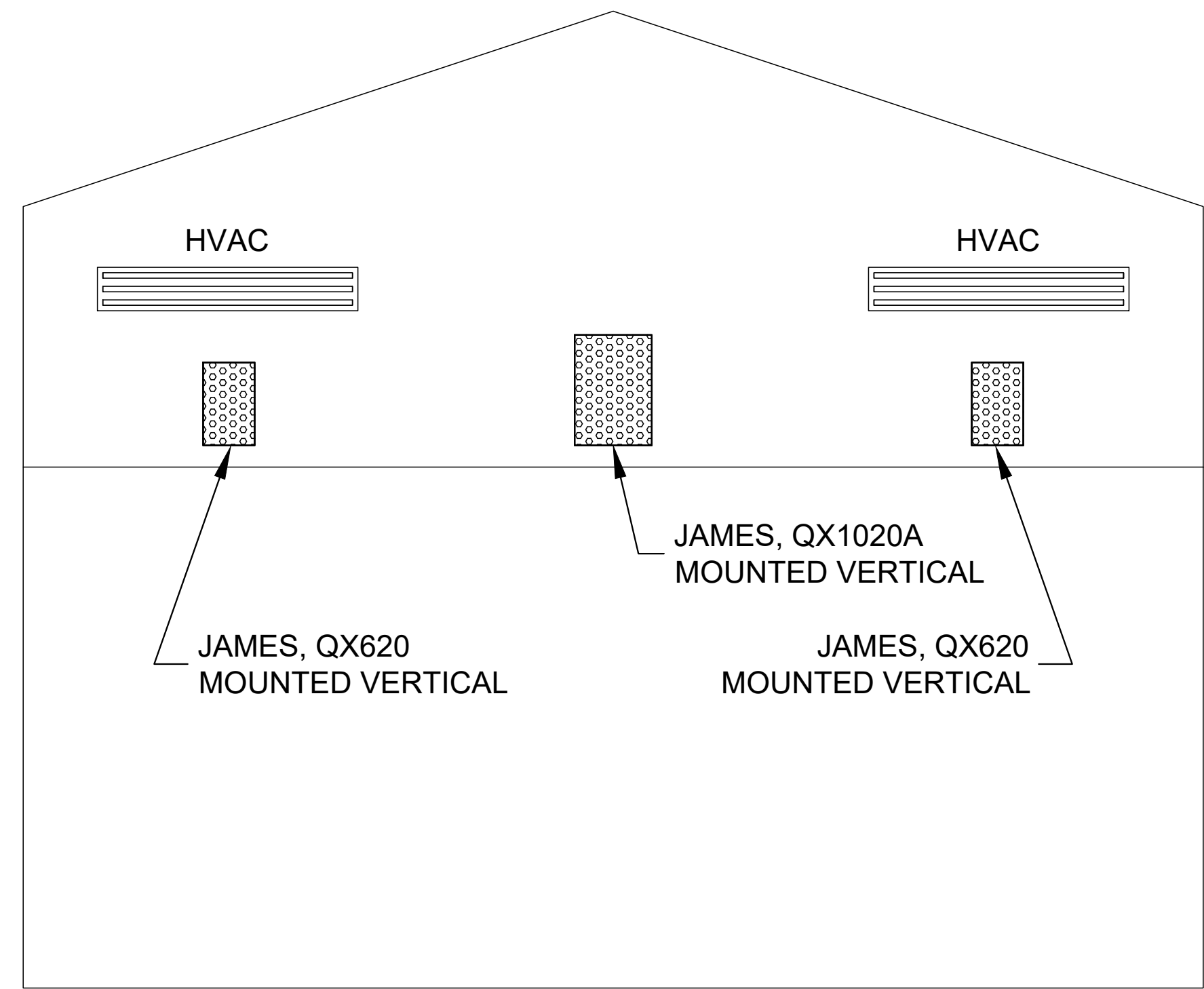
SHEET IDENTIFICATION  
SS-103  
SHEET 06 OF 09

SUBMITTAL FOR REVIEW





2 POOL BAR CEILING STRUCTURE ELEVATION - SPEAKER MOUNTING LOCATIONS  
 SS-401 SCALE: 1/2"=1'-0"



4  
SS-401

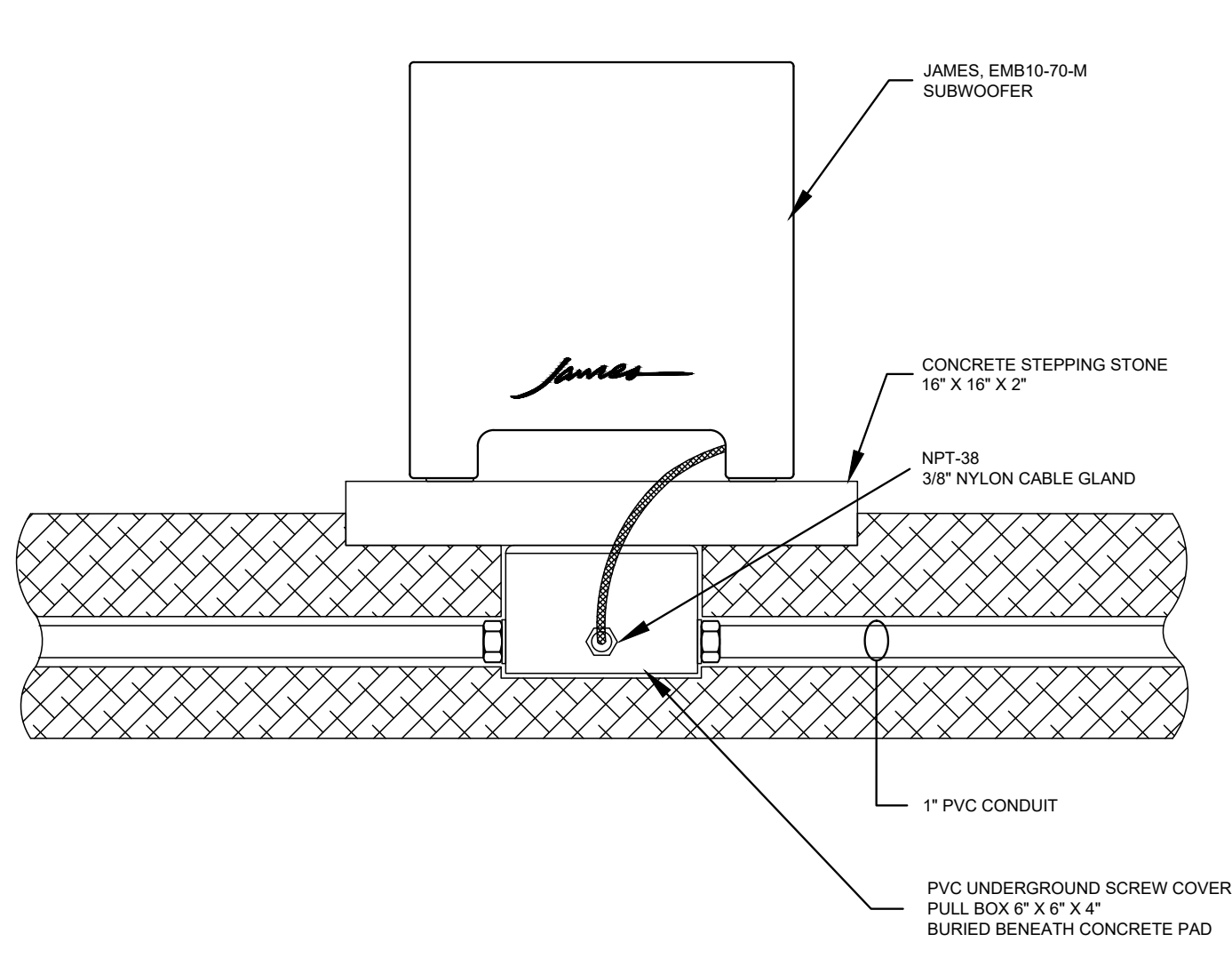
1930'S HOUSE WALL ELEVATION - LOUDSPEAKER INSTALLATION INTENT

SCALE: NONE

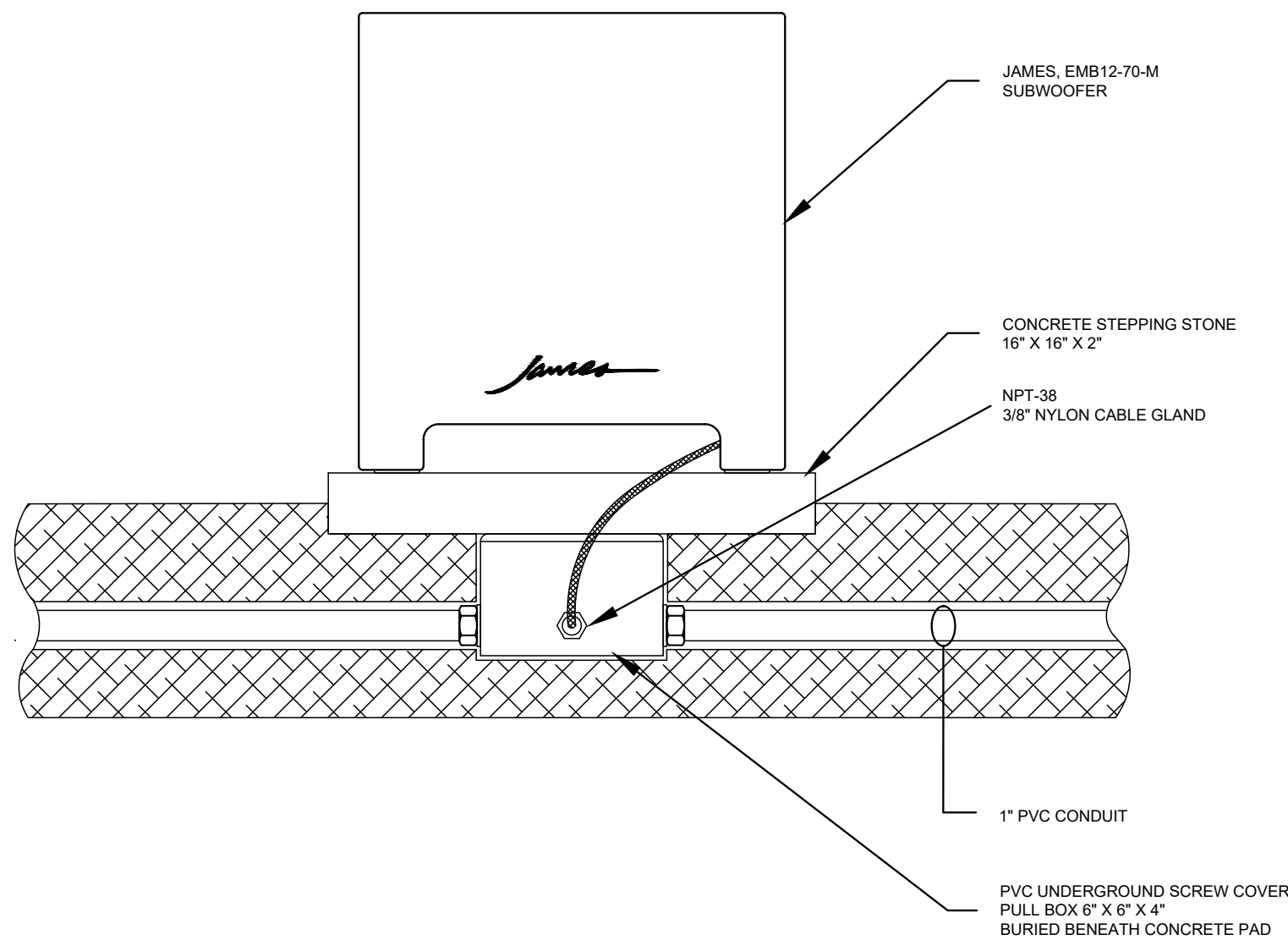
RESTRICTED INFORMATION	
THIS DRAWING IS NOT TO BE REPRODUCED, REVEALED TO THIRD PARTIES, OR USED FOR THE MANUFACTURE OR SALE OF ANY PRODUCT DESCRIBED HEREIN WITHOUT PRIOR WRITTEN APPROVAL FROM LWW ELECTRONICS. COPYRIGHT 2023	
© LWW ELECTRONICS	
DESIGNED BY: K. MANGUN	DATE: 04-03-2024
DRAWN BY: K. MANGUN	SOLICITATION NUMBER:
CHECKED BY: K. MANGUN	CONTRACT NUMBER:
SUBMITTED BY: K. MANGUN	LWW PROJECT NUMBER: BP024-0402
FILE NAME: ANAZA HOTEL MIAMI BEACH - SS - 04-02-2024	DATE: 04-03-2024
42"x36"	SUBMITTAL FOR REVIEW
MARK	RY
DESCRIPTION	
SYSTEM SUPPLIER, DESIGNER & INSTALLER:	
LWW ELECTRONICS 1500 N. MIAMI AVENUE, BLDG 3, UNIT 1 MIAMI, FL 33136 PHONE: (305) 375-8414	
LWW	
ANAZA HOTEL MIAMI BEACH SOUND SYSTEM INSTALLATION 4044 COLLINS AVENUE MIAMI BEACH, FLORIDA 33140	
POOL BAR CEILING STRUCTURE PLAN - SPEAKER MOUNTING LOCATIONS AND CONDUIT LAYOUT, SPEAKER MOUNTING DETAIL END VIEW	
SHEET IDENTIFICATION	
SS-401	
SHEET 07 OF 09	



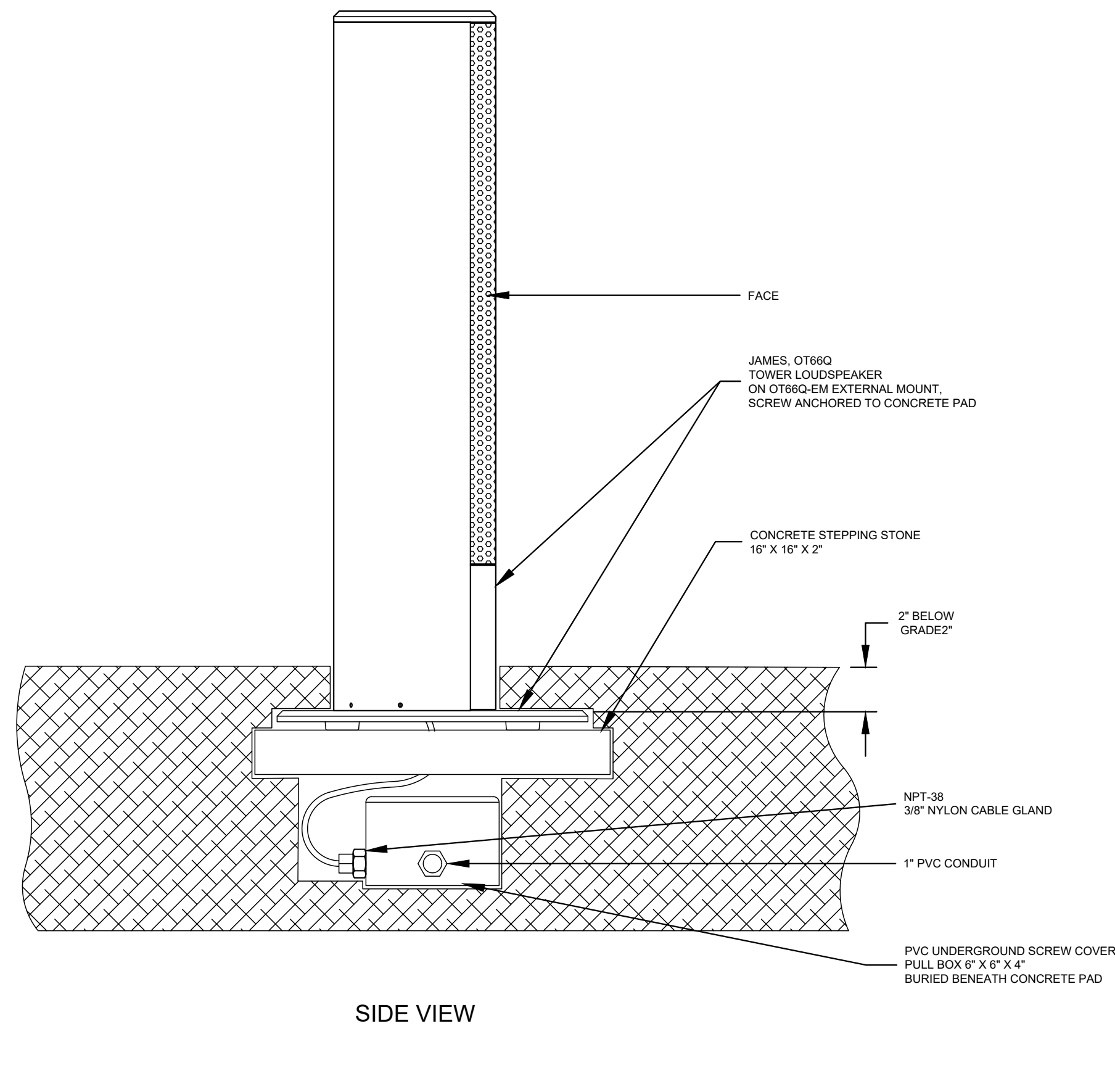
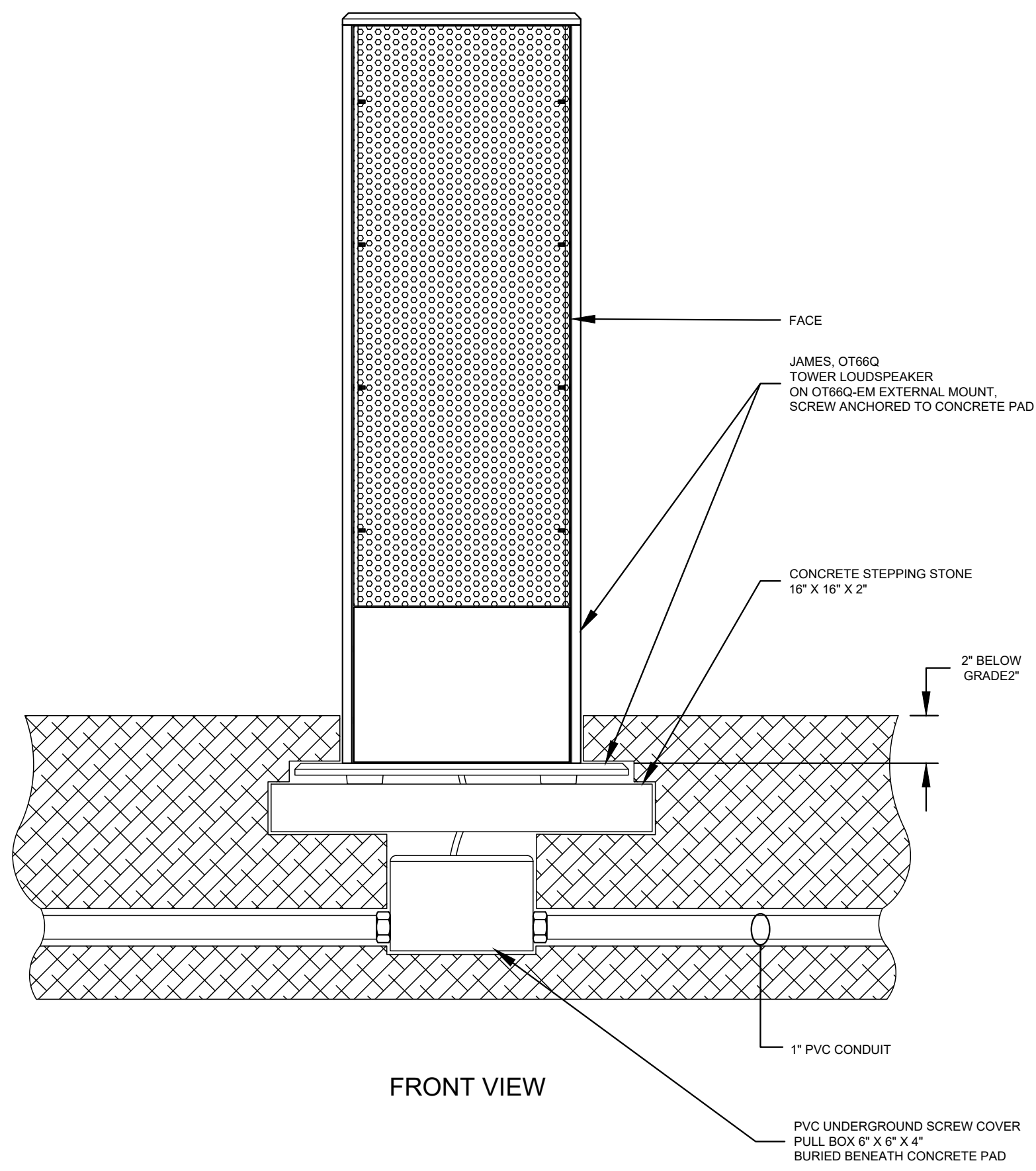
E  
D  
C  
C:\ACAD DRAWING FILES - CURRENT\CAD WORKING\BPD24\0301 - ANDAZ HOTEL MIAMI BEACH - SS - 04-02-2024\0301-ANDAZ HOTEL MIAMI BEACH - SS - 04-02-2024



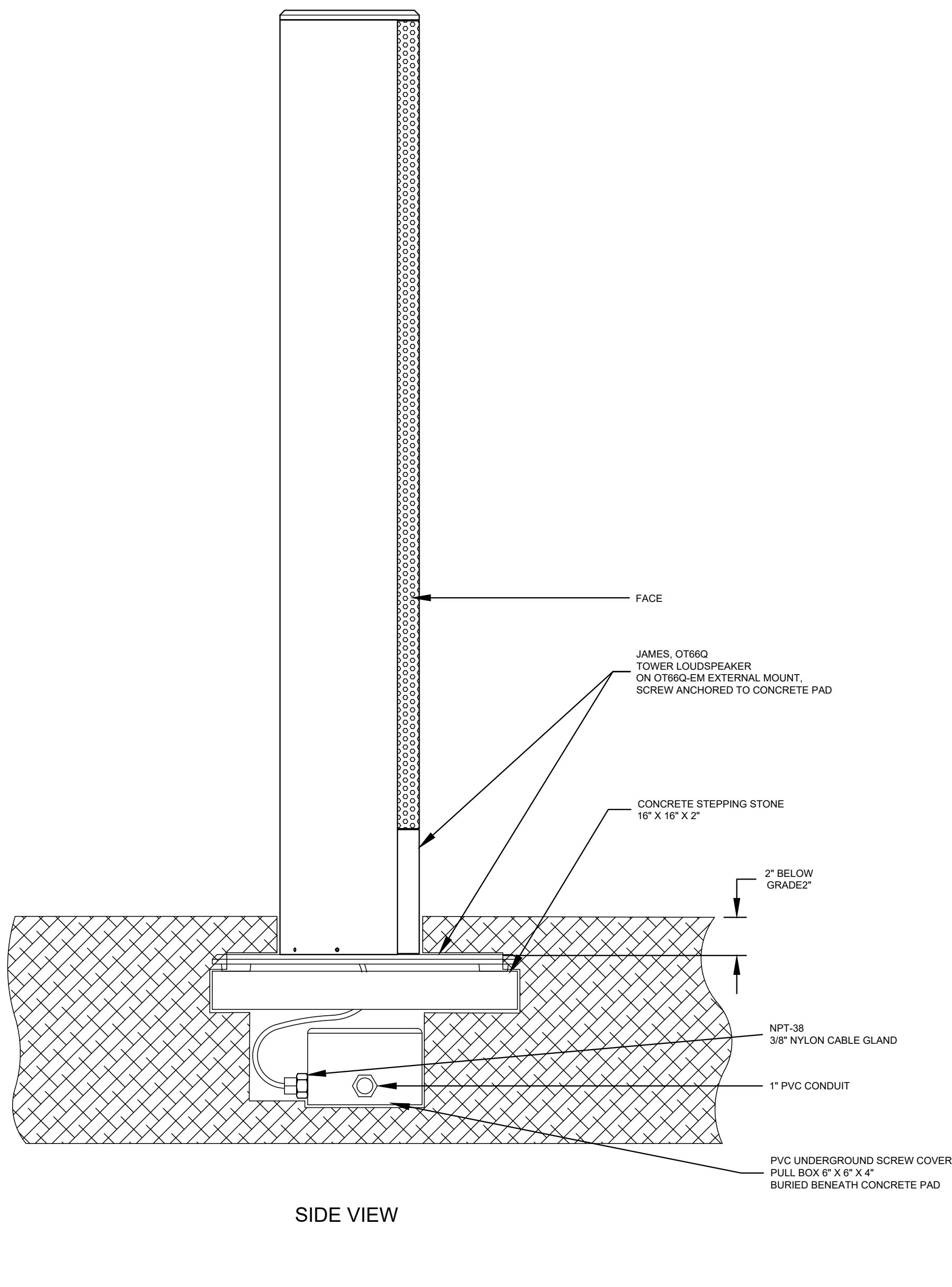
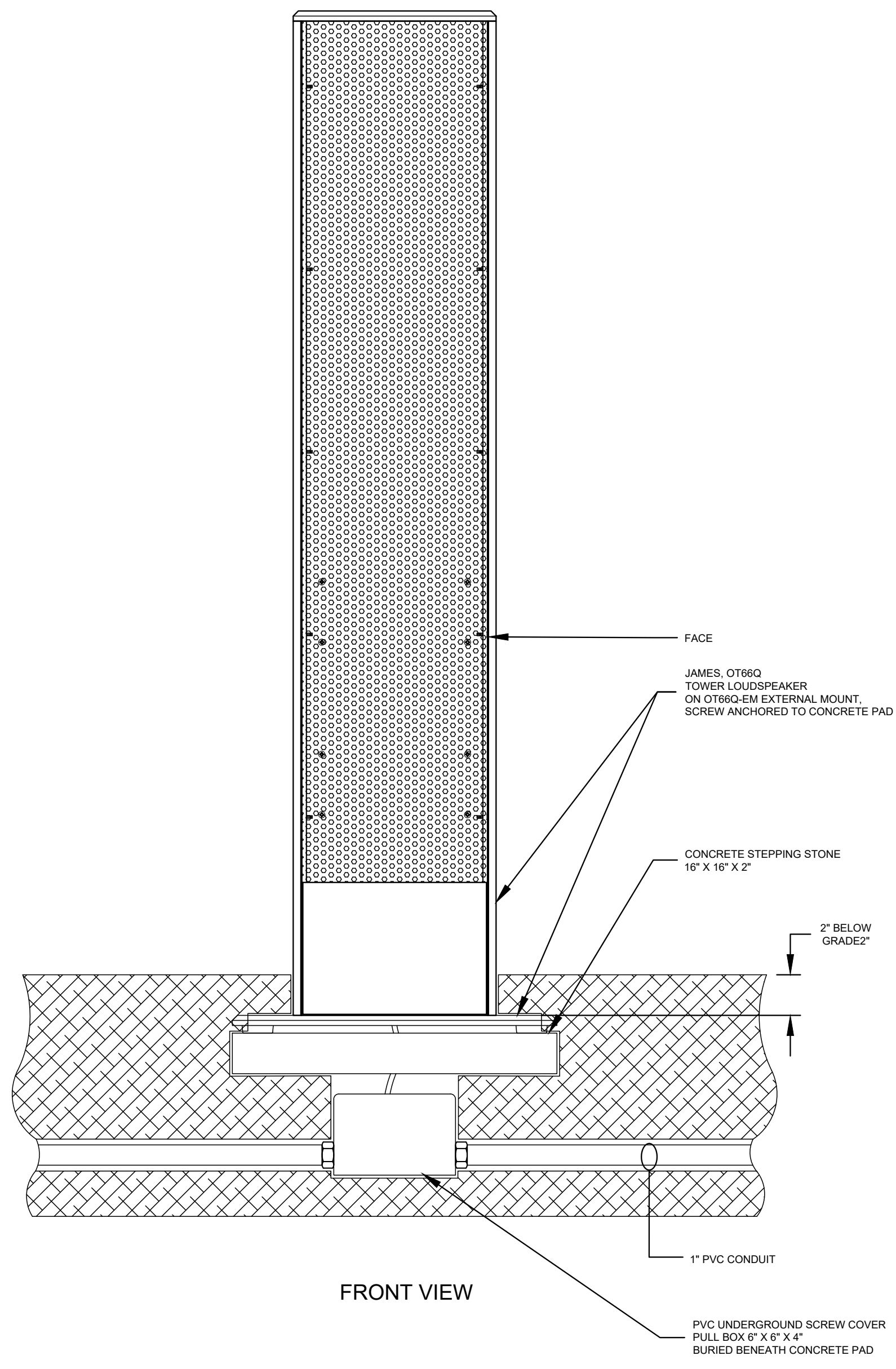
1  
SS-402  
LANDSCAPE SUBWOOFER MOUNTING DETAIL - JAMES EMB10-70-M  
SCALE: 3/16"=1'-0"



2  
SS-402  
LANDSCAPE SUBWOOFER MOUNTING DETAIL - JAMES EMB12-70-M  
SCALE: 3/16"=1'-0"



3  
SS-402  
LANDSCAPE TOWER MOUNTING DETAIL - JAMES OT86Q  
SCALE: 3/16"=1'-0"



4  
SS-403  
LANDSCAPE TOWER MOUNTING DETAIL - OT86Q  
SCALE: 3/16"=1'-0"

RESTRICTED INFORMATION  
THIS DRAWING IS NOT TO BE REPRODUCED, REVEALED TO THIRD PARTIES, OR USED FOR THE MANUFACTURE OR SALE OF ANY PRODUCT DESCRIBED HEREIN WITHOUT PRIOR WRITTEN APPROVAL FROM LWW ELECTRONICS. COPYRIGHT 2023 LWW ELECTRONICS

DATE	DESCRIPTION	BY	MARK
04-02-2024	ELIMINATE JAMES EMB10-AM SUBWOOFER DETAIL - RE NUMBER DETAILS	K.M.	
04-02-2024	SUBMITTAL FOR REVIEW	K.M.	

DESIGNED BY: K. MANGUN	DATE: 04-02-2024
DRAWN BY: K. MANGUN	SOLICITATION NUMBER: SS-402
CHECKED BY: K. MANGUN	CONTRACT NUMBER: SS-402
SUBMITTED BY: K. MANGUN	LWW PROJECT NUMBER: BPD24-002
FILE NAME: SS-402-307	ANDAZ HOTEL MIAMI BEACH - SS - 04-02-2024

SYSTEM SUPPLIER, DESIGNER & INSTALLER

**LWW ELECTRONICS**  
10011 T. BLOG 3, UNIT 1  
DENVER, CO 80239  
PHONE: (303) 375-9414

**LWW**

ANDAZ HOTEL MIAMI BEACH  
SOUND SYSTEM INSTALLATION  
4041 COLLINS AVENUE  
MIAMI BEACH, FLORIDA 33140

LANDSCAPE SUBWOOFER MOUNTING DETAILS,  
LANDSCAPE TOWER MOUNTING DETAILS

SHEET  
IDENTIFICATION  
SS-402  
SHEET 08 OF 09

SUBMITTAL FOR REVIEW