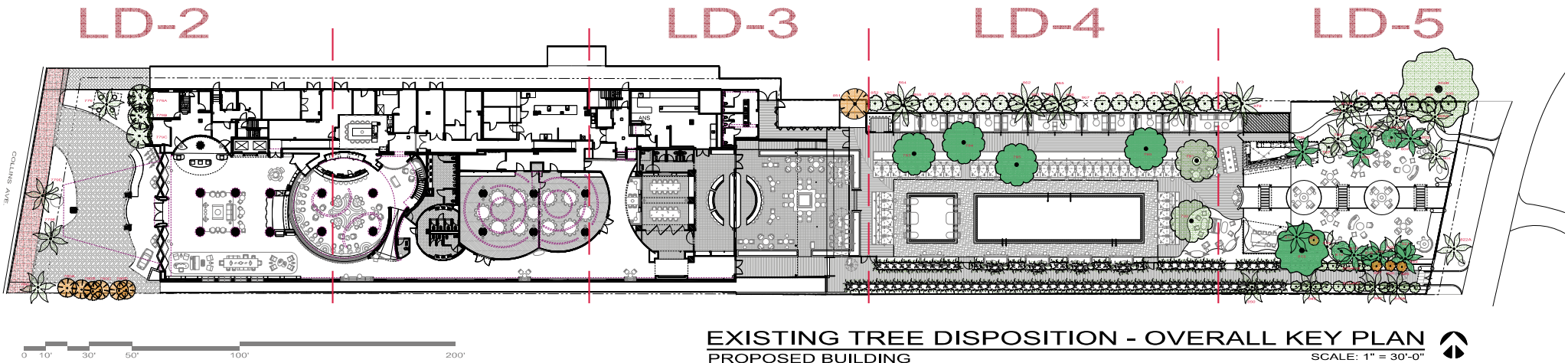


Existing Tree Disposition List							
No.	Common Name	Botanical Name	Height (Feet)	Spread (Feet)	DBH (Inches)	Condition	Disposition
779	Coconut Palm	Cocos nucifera	36'	22'	10"	Good	Remain
779A	Chinese Fan Palm	Livistona chinensis	25'	10'	8"	Fair	Remain
779B	Chinese Fan Palm, dbl	Livistona chinensis	25'	18'	16"	Fair	Remain
779C	Chinese Fan Palm	Livistona chinensis	23'	10'	8"	Fair	Remain
779D	Coconut Palm	Cocos nucifera	26'	20'	8"	Fair	Remain
779E	Coconut Palm	Cocos nucifera	32'	20'	9"	Fair	Remain
780	Coconut Palm	Cocos nucifera	34'	22'	10"	Fair	Remain
780A	Chinese Fan Palm	Livistona chinensis	16'	10'	10"	Fair	Remove
780B	Chinese Fan Palm, dbl	Livistona chinensis	26'	20'	16"	Fair	Remove
780C	Chinese Fan Palm	Livistona chinensis	14'	10'	12"	Fair	Remove
780D	Chinese Fan Palm, dbl	Livistona chinensis	23'	12'	18"	Fair	Remove
783	Mahogany	Swietenia mahagoni	16'	18'	12"	Moderate	Transplant
784	Mahogany	Swietenia mahagoni	17'	16'	12"	Moderate	Transplant
785	Mahogany	Swietenia mahagoni	17'	16'	11"	Moderate	Transplant
790	Mahogany	Swietenia mahagoni	15'	16'	9"	Moderate	Transplant
791	Mahogany	Swietenia mahagoni	15'	16'	11"	Moderate	Remain
792	Mahogany	Swietenia mahagoni	15'	16'	8"	Moderate	Remain
796	Coconut Palm	Cocos nucifera	30'	20'	9"	Fair	Transplant
797	Silver Buttonwood	Conocarpus erectus 'Sericeus'	18'	22'	7"	Moderate	Remain
798	Coconut Palm	Cocos nucifera	37'	20'	8"	Fair	Remain
799	Silver Buttonwood	Conocarpus erectus 'Sericeus'	18'	24'	12"	Fair	Transplant
799A	Coconut Palm	Cocos nucifera	30'	20'	8"	Fair	Remain
800	Coconut Palm	Cocos nucifera	40'	22'	8"	Fair	Transplant
801	Silver Buttonwood	Conocarpus erectus 'Sericeus'	15'	18'	15"	Fair	Transplant
801A	Coconut Palm	Cocos nucifera	32'	20'	8"	Fair	Remain
802	Coconut Palm	Cocos nucifera	24'	20'	7"	Fair	Transplant
803	Silver Buttonwood	Conocarpus erectus 'Sericeus'	14'	20'	10"	Fair	Remain
804	Coconut Palm	Cocos nucifera	30'	20'	8"	Moderate	Remain
805	Green Buttonwood	Conocarpus erectus	20'	22'	6"	Moderate	Remain
805A	Coconut Palm	Cocos nucifera	30'	20'	8"	Fair	Remain
805B	Sea Grape	Coccoloba uvifera	24'	38'	37"	Adjacent property	Remain
806	Green Buttonwood	Conocarpus erectus	20'	22'	7"	Moderate	Remain
807	Green Buttonwood	Conocarpus erectus	20'	22'	4"	Moderate	Remain
807A	Coconut Palm	Cocos nucifera	32'	20'	8"	Fair	Remain
808	Green Buttonwood	Conocarpus erectus	25'	22'	4"	Moderate	Remain
809	Green Buttonwood	Conocarpus erectus	20'	22'	8"	Moderate	Remain
810	Green Buttonwood	Conocarpus erectus	20'	22'	5"	Moderate	Remain
810A	Coconut Palm	Cocos nucifera	32'	20'	8"	Moderate	Remain
811	Coconut Palm	Cocos nucifera	32'	20'	9"	Fair	Remain
812	Coconut Palm	Cocos nucifera	32'	18'	8"	Fair	Transplant
813	Sea Grape	Coccoloba uvifera	30'	40'	64"	Moderate	Transplant
814	Silver Buttonwood	Conocarpus erectus 'Sericeus'	20'	15'	3"	Poor	Remove
815	Coconut Palm	Cocos nucifera	40'	24'	9"	Fair	Remain
816	Silver Buttonwood	Conocarpus erectus 'Sericeus'	16'	20'	9"	Good	Transplant
817	Coconut Palm	Cocos nucifera	30'	22'	8"	Fair	Transplant
818	Silver Buttonwood	Conocarpus erectus 'Sericeus'	15'	18'	7"	Fair	Transplant
819	Coconut Palm	Cocos nucifera	32'	20'	9"	Fair	Transplant
820	Coconut Palm	Cocos nucifera	30'	20'	8"	Fair	Remain
821	Silver Buttonwood	Conocarpus erectus 'Sericeus'	15'	20'	9"	Fair	Transplant
822	Coconut Palm	Cocos nucifera	30'	20'	8"	Fair	Transplant
822A	Coconut Palm	Cocos nucifera	24'	24'	8"	Fair	Remain

825	Cusia shrub	Cusia guttifera			---	Moderate	Remove
826	Cusia shrub	Cusia guttifera			---	Moderate	Remove
827	Cusia shrub	Cusia guttifera			---	Moderate	Remove
828	Cusia shrub	Cusia guttifera			---	Moderate	Remain
829	Cusia shrub	Cusia guttifera			---	Moderate	Remain
830	Cusia shrub	Cusia guttifera			---	Moderate	Remain
831	Cusia shrub	Cusia guttifera			---	Moderate	Remain
832	Cusia shrub	Cusia guttifera			---	Moderate	Remain
833	Cusia shrub	Cusia guttifera			---	Moderate	Remain
834	Cusia shrub	Cusia guttifera			---	Moderate	Remain
835	Cusia shrub	Cusia guttifera			---	Moderate	Remain
836	Cusia shrub	Cusia guttifera			---	Moderate	Remain
837	Cusia shrub	Cusia guttifera			---	Moderate	Remain
838	Cusia shrub	Cusia guttifera			---	Moderate	Remain
839	Cusia shrub	Cusia guttifera			---	Moderate	Remain
840	Cusia shrub	Cusia guttifera			---	Moderate	Remain
841	Cusia shrub	Cusia guttifera			---	Moderate	Remain
842	Cusia shrub	Cusia guttifera			---	Moderate	Remain
843	Cusia shrub	Cusia guttifera			---	Moderate	Remain
844	Cusia shrub	Cusia guttifera			---	Moderate	Remain
845	Cusia shrub	Cusia guttifera			---	Moderate	Remain
846	Cusia shrub	Cusia guttifera			---	Moderate	Remain
847	Cusia shrub	Cusia guttifera			---	Moderate	Remain
848	Coconut Palm	Cocos nucifera	25'	20'	8"	Fair	Remain
849	Coconut Palm	Cocos nucifera	28'	20'	8"	Fair	Remain
849A	Coconut Palm	Cocos nucifera	32'	20'	8"	Fair	Remain
850	Coconut Palm	Cocos nucifera	32'	20'	8"	Fair	Remain
851	Brazilian Pepper	Schinus terebinthifolia	20'	16'	Invasive	Poor	Remove
852	Green Buttonwood	Conocarpus erectus	20'	20'	10"	Moderate	Remain
853	Green Buttonwood	Conocarpus erectus	16'	16'	10"	Moderate	Remain
854	Royal Palm	Roystonea regia	25'	22'	12"	Moderate	Remain
855	Green Buttonwood	Conocarpus erectus	18'	18'	10"	Moderate	Remain
856	Green Buttonwood	Conocarpus erectus	20'	18'	8"	Fair	Remain
857	Green Buttonwood	Conocarpus erectus	20'	18'	7"	Moderate	Remain
858	Green Buttonwood	Conocarpus erectus	20'	20'	6"	Moderate	Remain
859	Green Buttonwood	Conocarpus erectus	18'	16'	6"	Moderate	Remain
860	Green Buttonwood	Conocarpus erectus	18'	16'	6"	Moderate	Remain
861	Green Buttonwood	Conocarpus erectus	22'	20'	10"	Fair	Remain
862	Royal Palm	Roystonea regia	30'	20'	14"	Moderate	Remain
863	Green Buttonwood	Conocarpus erectus	16'	16'	9"	Moderate	Remain
864	Green Buttonwood	Conocarpus erectus	16'	16'	6"	Moderate	Remain
865	Royal Palm	Roystonea regia	28'	22'	16"	Moderate	Remain
866	Green Buttonwood	Conocarpus erectus	18'	18'	8"	Moderate	Remain
867	Green Buttonwood	Conocarpus erectus	10'	5'	Dead	Poor	Remove
868	Green Buttonwood	Conocarpus erectus	20'	20'	7"	Moderate	Remain
869	Green Buttonwood	Conocarpus erectus	20'	18'	9"	Moderate	Remain
870	Green Buttonwood	Conocarpus erectus	18'	16'	7"	Moderate	Remain
871	Green Buttonwood	Conocarpus erectus	18'	14'	6"	Moderate	Remain
872	Green Buttonwood	Conocarpus erectus	18'	16'	7"	Moderate	Remain
873	Royal Palm	Roystonea regia	30'	22'	12"	Moderate	Remain
874	Green Buttonwood	Conocarpus erectus	20'	18'	8"	Moderate	Remain
875	Green Buttonwood	Conocarpus erectus	20'	18'	8"	Moderate	Remain
876	Green Buttonwood	Conocarpus erectus	20'	18'	6"	Moderate	Remain
877	Green Buttonwood	Conocarpus erectus	20'	18'	12"	Moderate	Remain
878	Royal Palm	Roystonea regia	30'	22'	11"	Moderate	Remain
Total DBH (inches) of Trees to be Removed						59"	
Total number of Palms to be Removed						0	
See Planting Plans for Tree Replacement							



EXISTING TREE DISPOSITION - OVERALL KEY PLAN
PROPOSED BUILDING
SCALE: 1" = 30'-0"



GEOMANTIC
DESIGNS, INC.
LANDSCAPE ARCHITECTURE
ROBERT PARSLEY A.S.L.A.
2732 GALLIANO STREET - 2ND FLOOR
CORAL GABLES, FLORIDA 33134
PHONE: (305) 663-9088

SEAL

LANDSCAPE
OVERALL PLAN

PROJECT TITLE
THE JAMES NAUTILUS
1825 COLLINS AVENUE MIAMI BEACH, FLORIDA 33139

PROJECT NO.
2309.00

REVISION DATE(S)

DATE
1/5/2025
HPB
LD-1



DISPOSITION LEGEND

	EXISTING TO REMAIN		TO BE TRANSPLANTED		TO BE REMOVED
--	--------------------	--	--------------------	--	---------------



GEOMANTIC DESIGNS, INC.
LANDSCAPE ARCHITECTURE
ROBERT PARSLEY A.S.L.A.
2732 GALLIANO STREET - 2ND FLOOR
CORAL GABLES, FLORIDA 33134
PHONE: (305) 665-9088

SEAL

**LANDSCAPE
ARRIVAL AREA**

THE JAMES NAUTILUS
1825 COLLINS AVENUE
MIAMI BEACH, FLORIDA 33139

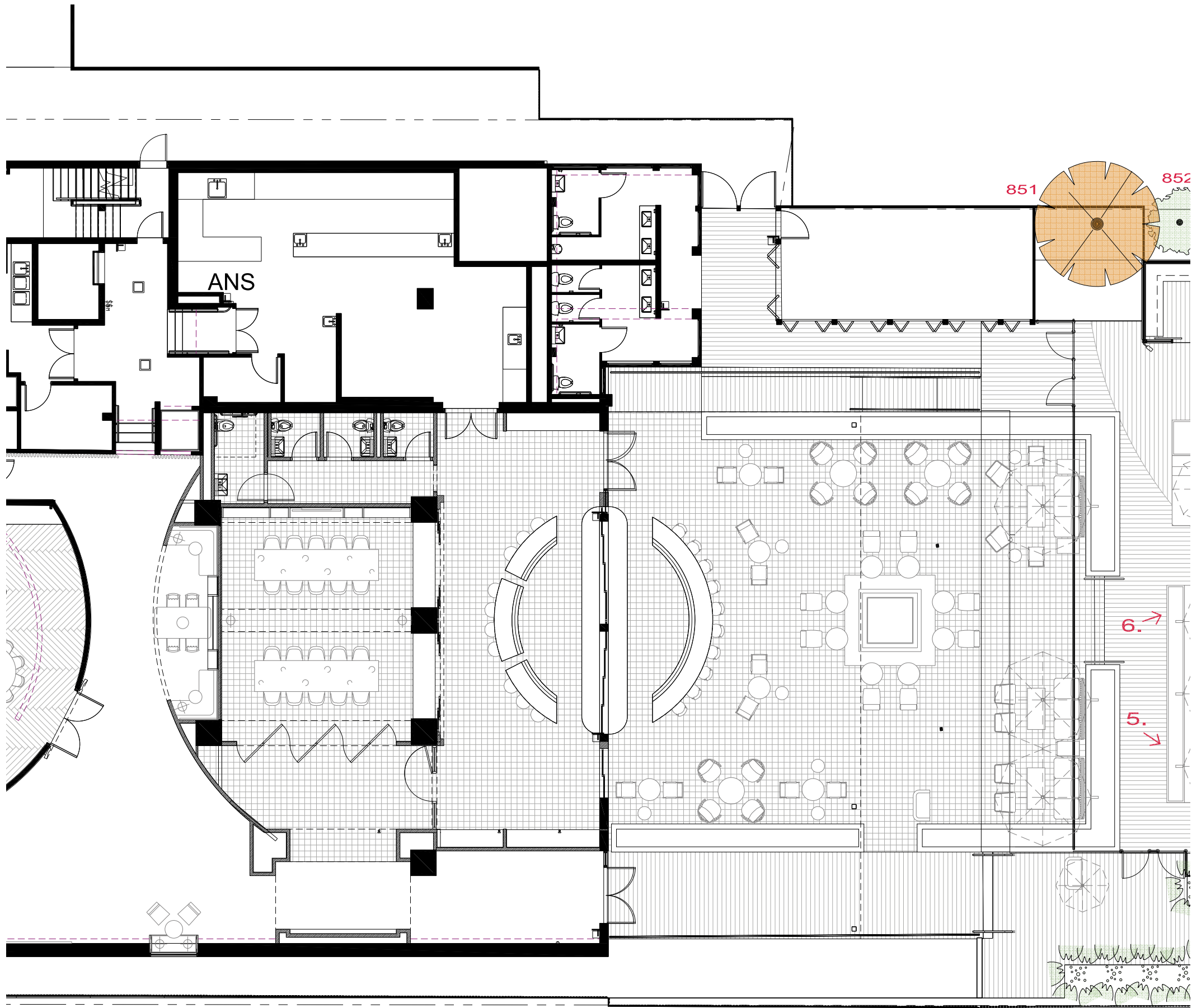
PROJECT NO.
2309.00
REVISION DATE(S)
DATE
1/5/2025
HPB
LD-2

EXISTING TREE DISPOSITION - ARRIVAL AREA
PROPOSED BUILDING

SCALE: 3/16" = 1'-0"



THE INFORMATION ON THIS PLAN IS THE PROPERTY OF GEOMANTIC DESIGNS, INC. AND IS NOT TO BE REPRODUCED, COPIED, OR ALTERED IN ANY MANNER WITHOUT THE WRITTEN PERMISSION OF GEOMANTIC DESIGNS, INC. THIS PLAN IS TO BE USED ONLY FOR THE PROJECT AND SITE SPECIFICALLY IDENTIFIED HEREON AND IS NOT TO BE USED FOR ANY OTHER PROJECT. THESE PLANS ARE TO BE SUBMITTED FOR REVIEW, APPROVAL, AND PERMIT BY THE APPROPRIATE AGENCIES.



DISPOSITION LEGEND



EXISTING TREE DISPOSITION - BARLUME SALON AREA
PROPOSED BUILDING

SCALE: 3/16" = 1'-0"



GEOMANTIC
DESIGNS, INC.
LANDSCAPE ARCHITECTURE
ROBERT PARSLEY A.S.L.A.
2732 GALLIANO STREET - 2ND FLOOR
CORAL GABLES, FLORIDA 33134
PHONE: (305) 665-9088

SEAL



LANDSCAPE
BARLUME SALON AREA

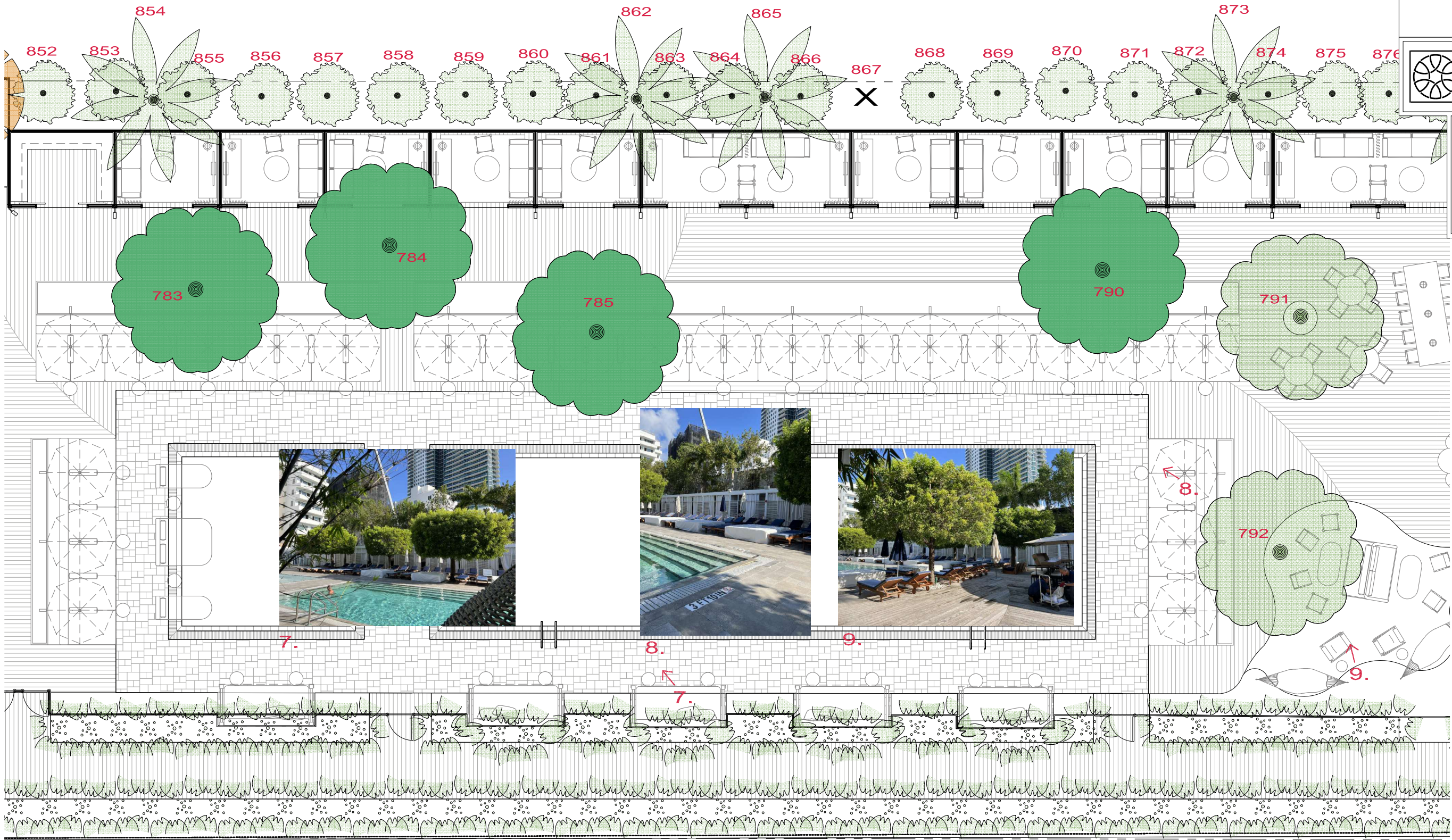
THE JAMES NAUTILUS
1825 COLLINS AVENUE
MIAMI BEACH, FLORIDA 33139

PROJECT NO.
2309.00

REVISION DATE(S)

DATE
1/5/2025

HPB
LD-3





**GEOMANTIC
DESIGNS, INC.**
LANDSCAPE ARCHITECTURE
ROBERT PARSLEY A.S.L.A.
2732 GALLIANO STREET - 2ND FLOOR
CORAL GABLES, FLORIDA 33134
PHONE: (305) 665-9088

SEAL

**LANDSCAPE
POOL AREA**

THE JAMES NAUTILUS
1825 COLLINS AVENUE
MIAMI BEACH, FLORIDA 33139

PROJECT NO.	2309.00
REVISION DATE(S)	
DATE	1/5/2025
HPB LD-4	

EXISTING TREE DISPOSITION - POOL AREA
PROPOSED BUILDING
SCALE: 3/16" = 1'-0"



10.



11.



12.



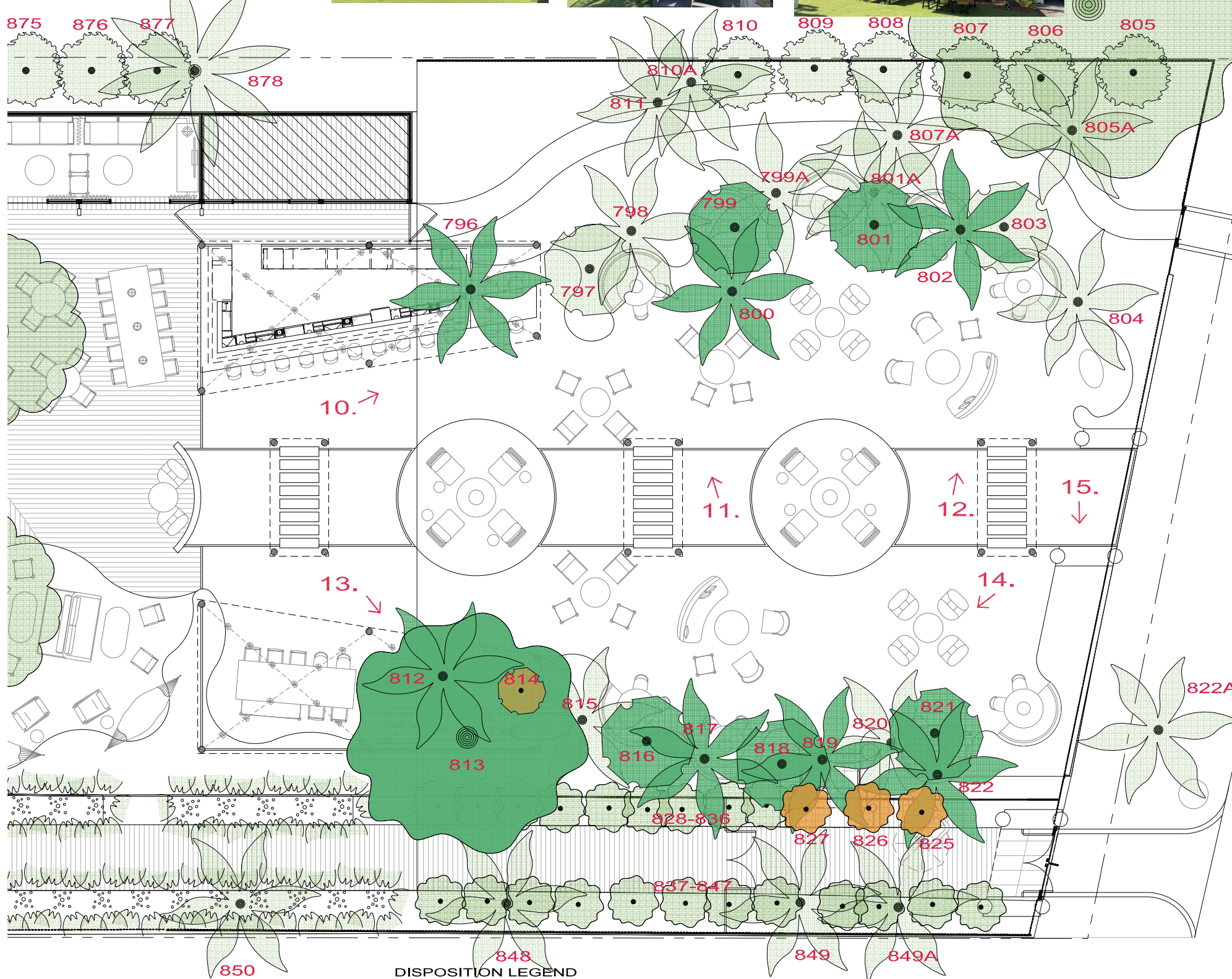
13.



14.



15.



DISPOSITION LEGEND



EXISTING TREE DISPOSITION - BARLUME BEACH AREA & BOARDWALK AREA
PROPOSED BUILDING
SCALE: 3/16" = 1'-0"



SEAL



16.



17.

← 17.



18.

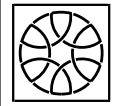
THE JAMES NAUTILUS
1825 COLLINS AVENUE
MIAMI BEACH, FLORIDA 33139
PROJECT NO. 2309.00
REVISION DATE(S)
DATE 1/5/2025
HPB
LD-5

LANDSCAPE
BARLUME BEACH & BOARDWALK

A photograph showing a dense, well-maintained hedge of green shrubs or small trees, creating a solid green wall. A light-colored, gravelly path leads from the foreground into the hedge on the left side. The background shows more greenery and a glimpse of a palm tree under a bright sky.

ARRIVAL AREA

SCALE: 3/16" = 1'-0"

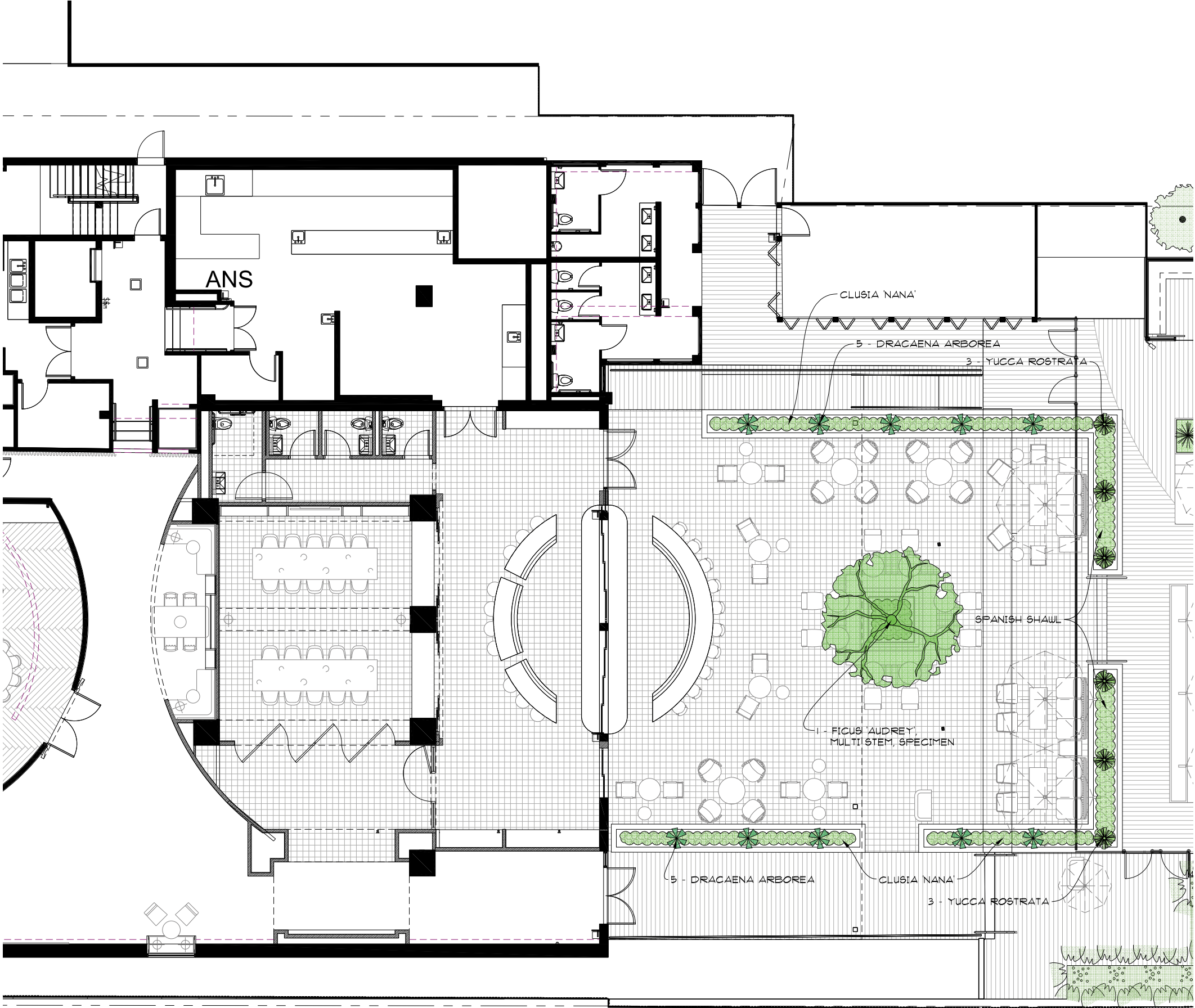


SEAL

THE JAMES NAUTILUS
1825 COLLINS AVENUE MIAMI BEACH, FLORIDA 33139

HPB

HPB
L-2



CONCEPT PLANTING IMAGES



SCULPTURAL ACCENT TREE



YUCCA ROSTRATA



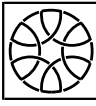
DRACAENA ARBOREA



SPANISH SHAUL



CLUSIA ROSEA NANA



GEOMANTIC
DESIGNS, INC.
LANDSCAPE ARCHITECTURE
ROBERT PARSLEY A.S.L.A.
2132 GALLIANO STREET - 2ND FLOOR
CORAL GABLES, FLORIDA 33134
PHONE: (305) 665-9088

SEAL

LANDSCAPE
BARLUME SALON AREA

THE JAMES NAUTILUS
1825 COLLINS AVENUE
MIAMI BEACH, FLORIDA 33139

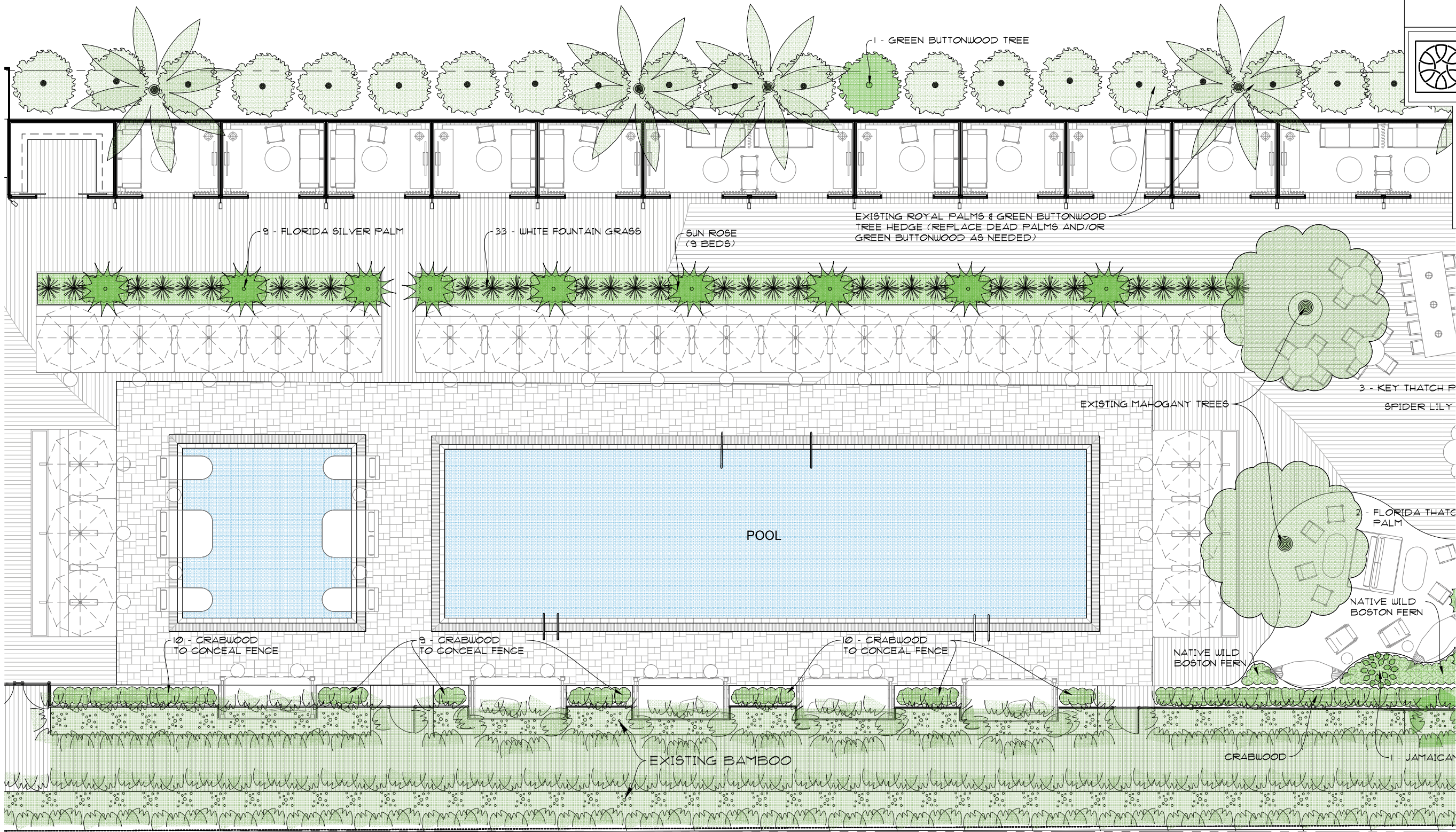
PROJECT NO.
2309.00

REVISION DATE(S)

DATE
1/5/2025

HPB
L-3

BARLUME SALON AREA
SCALE: 3/16" = 1'-0"



GEOMANTIC
DESIGNS, INC.
LANDSCAPE ARCHITECTURE
ROBERT PARSLEY A.S.L.A.
2732 GALLIANO STREET - 2ND FLOOR
CORAL GABLES, FLORIDA 33134
PHONE: (305) 665-9088

SEAL

LANDSCAPE
POOL AREA

THE JAMES NAUTILUS
1825 COLLINS AVENUE
MIAMI BEACH, FLORIDA 33139

PROJECT NO.
2309.00

REVISION DATE(S)

DATE
1/5/2025

HPB
L-4

POOL AREA
SCALE: 3/16" = 1'-0"

CONCEPT PLANTING IMAGES



WHITE FOUNTAIN GRASS



FLORIDA SILVER PALM



SUN ROSE



BAMBOO SCREENING HEDGE



CRABWOOD SCREENING HEDGE

POOL AREA



GEOMANTIC
DESIGNS, INC.

LANDSCAPE ARCHITECTURE

ROBERT PARSLEY A.S.L.A.

2732 GALLIANO STREET - 2ND FLOOR
CORAL GABLES, FLORIDA 33134
PHONE: (305) 665-9088

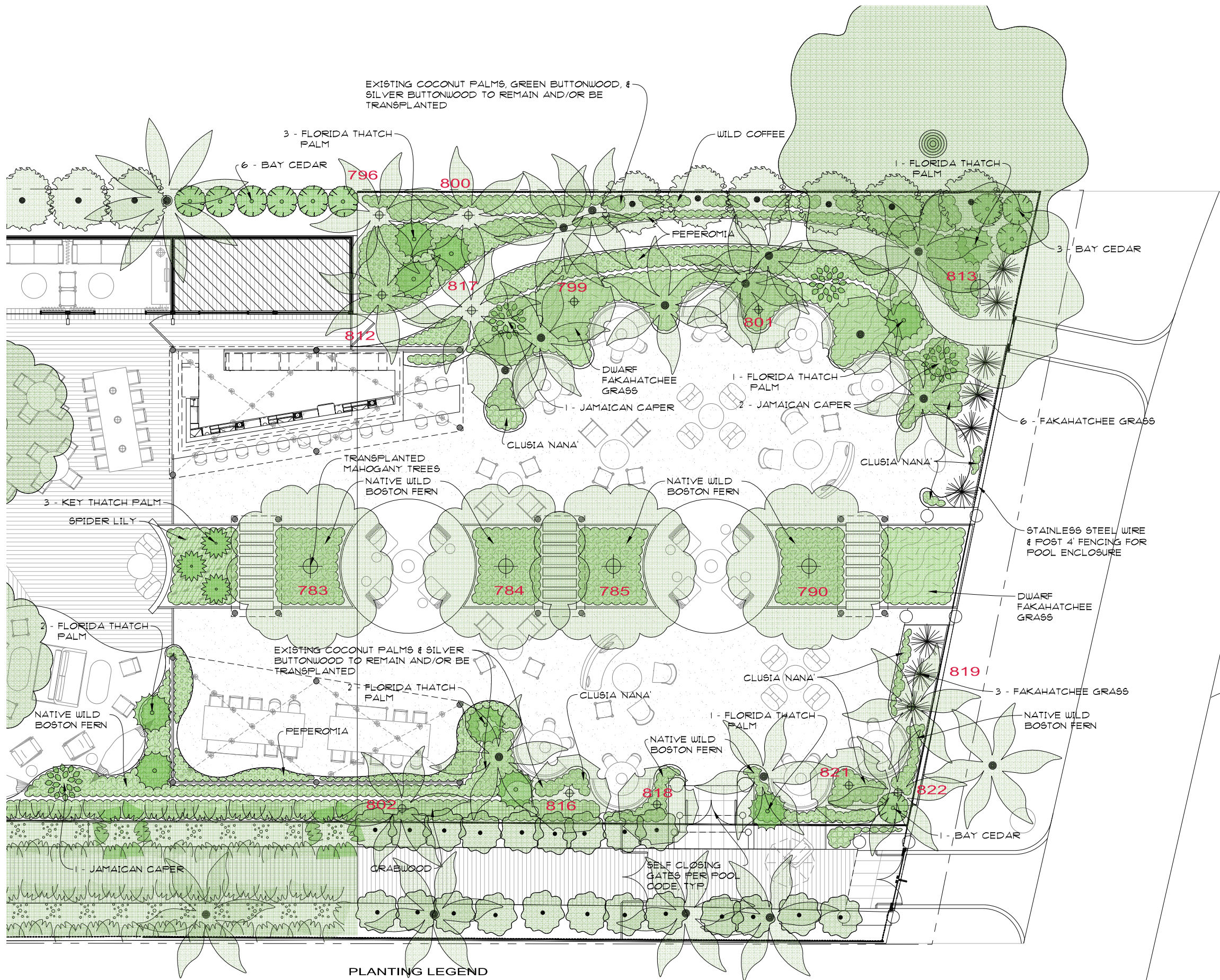
SEAL

THE DRAWINGS ARE TO BE USED FOR THE PROJECT AND SITE ONLY. THE DRAWINGS ARE THE PROPERTY OF THE LANDSCAPE ARCHITECT AND NOT TO BE REPRODUCED, COPIED, OR ALTERED IN ANY MANNER. IT IS ONLY TO BE USED FOR THE PROJECT AND NOT TO BE USED FOR ANY OTHER PROJECT. THESE DRAWINGS ARE TO BE SUBMITTED FOR REVIEW, APPROVAL, AND PRINTING BY THE APPROPRIATE AGENCY.

LANDSCAPE
POOL AREA

PROJECT TITLE
THE JAMES NAUTILUS
1825 COLLINS AVENUE
MIAMI BEACH, FLORIDA 33139

PROJECT NO.
2309.00
REVISION DATE(S)
DATE
1/5/2025
HPB
L-4a



SEAL

LANDSCAPE
BARLUME BEACH & BOARDWALK

THE JAMES NAUTILUS
1825 COLLINS AVENUE
MIAMI BEACH, FLORIDA 33139

PROJECT NO.
2309.00
REVISION DATE(S)
DATE
1/5/2025
HPB
L-5

BARLUME BEACH AREA & BOARDWALK AREA
SCALE: 3/16" = 1'-0"

CONCEPT PLANTING IMAGES



FLORIDA THATCH PALM



FAKAHATCHEE GRASS



BAY CEDAR



NATIVE WILD BOSTON FERN



WILD COFFEE



DWARF FAKAHATCHEE GRASS



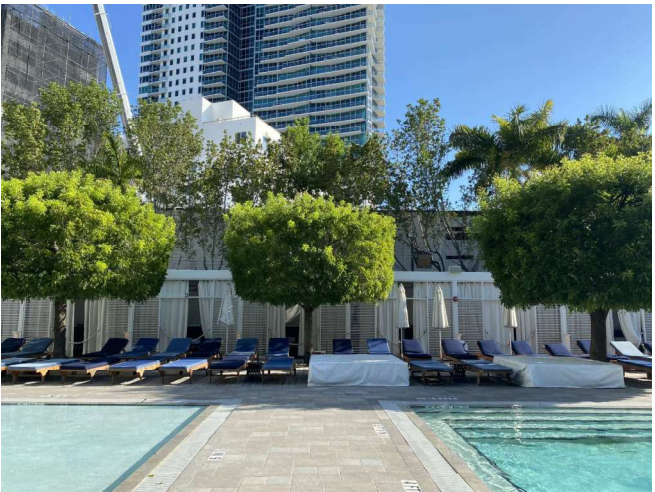
KEY THATCH PALM



CLUSIA ROSEA NANA'



SPIDER LILY

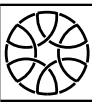


CLIPPED MAHOGANY TREES



CRABWOOD SCREENING HEDGE

BARLUME BEACH AREA & BOARDWALK AREA



GEOMANTIC
DESIGNS, INC.

LANDSCAPE ARCHITECTURE

ROBERT PARSLEY A.S.L.A.

2732 GALLIANO STREET - 2ND FLOOR
CORAL GABLES, FLORIDA 33134
PHONE: (305) 665-9088

SEAL

LANDSCAPE
BARLUME BEACH & BOARDWALK

PROJECT TITLE

THE JAMES NAUTILUS
1825 COLLINS AVENUE
MIAMI BEACH, FLORIDA 33139

PROJECT NO.
2309.00

REVISION DATE(S)

DATE
1/5/2025

HPB
L-5a

THE DRAWINGS ARE TO BE USED FOR THE PROJECT AND NOT FOR ANY OTHER PURPOSE. THE DRAWINGS ARE THE PROPERTY OF THE LANDSCAPE ARCHITECT AND NOT TO BE REPRODUCED, COPIED, OR ALTERED IN ANY MANNER. THE ONLY TO BE SPECIALLY IDENTIFIED HEREIN ARE NOT TO BE USED IN ANY OTHER PROJECT. THESE PLANS ARE TO BE SUBMITTED FOR REVIEW, APPROVAL, AND PERMIT BY THE APPROPRIATE AGENCY.



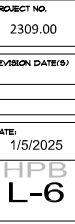
TREE PLANTING - VERTICAL STAKES



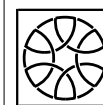
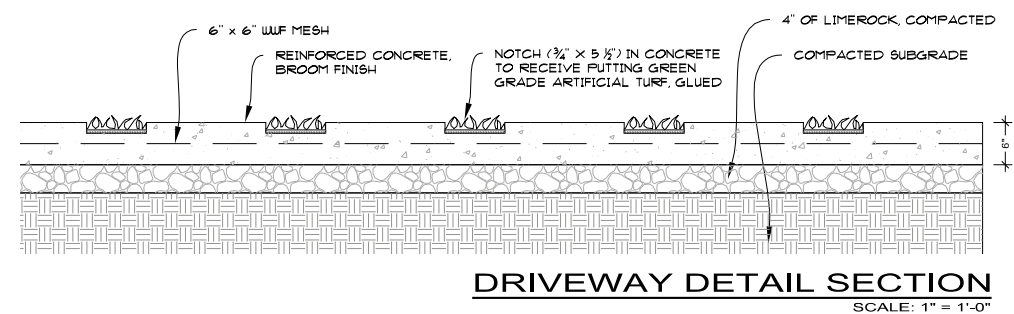
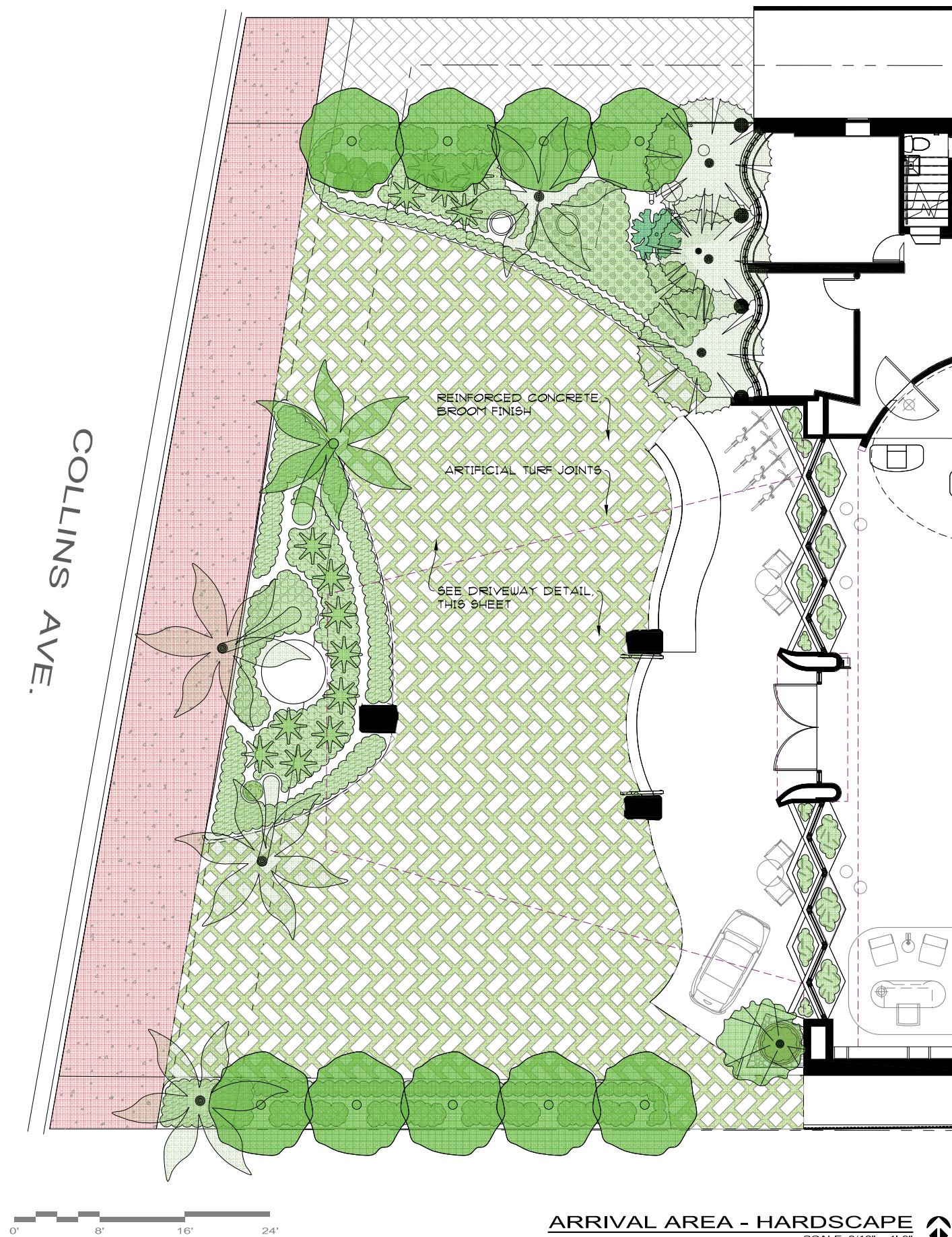
NOTE:
USE 500 2" TO 12" SINGLE STEM TREES



- ### HEDGE & MASS PLANTING DETAIL

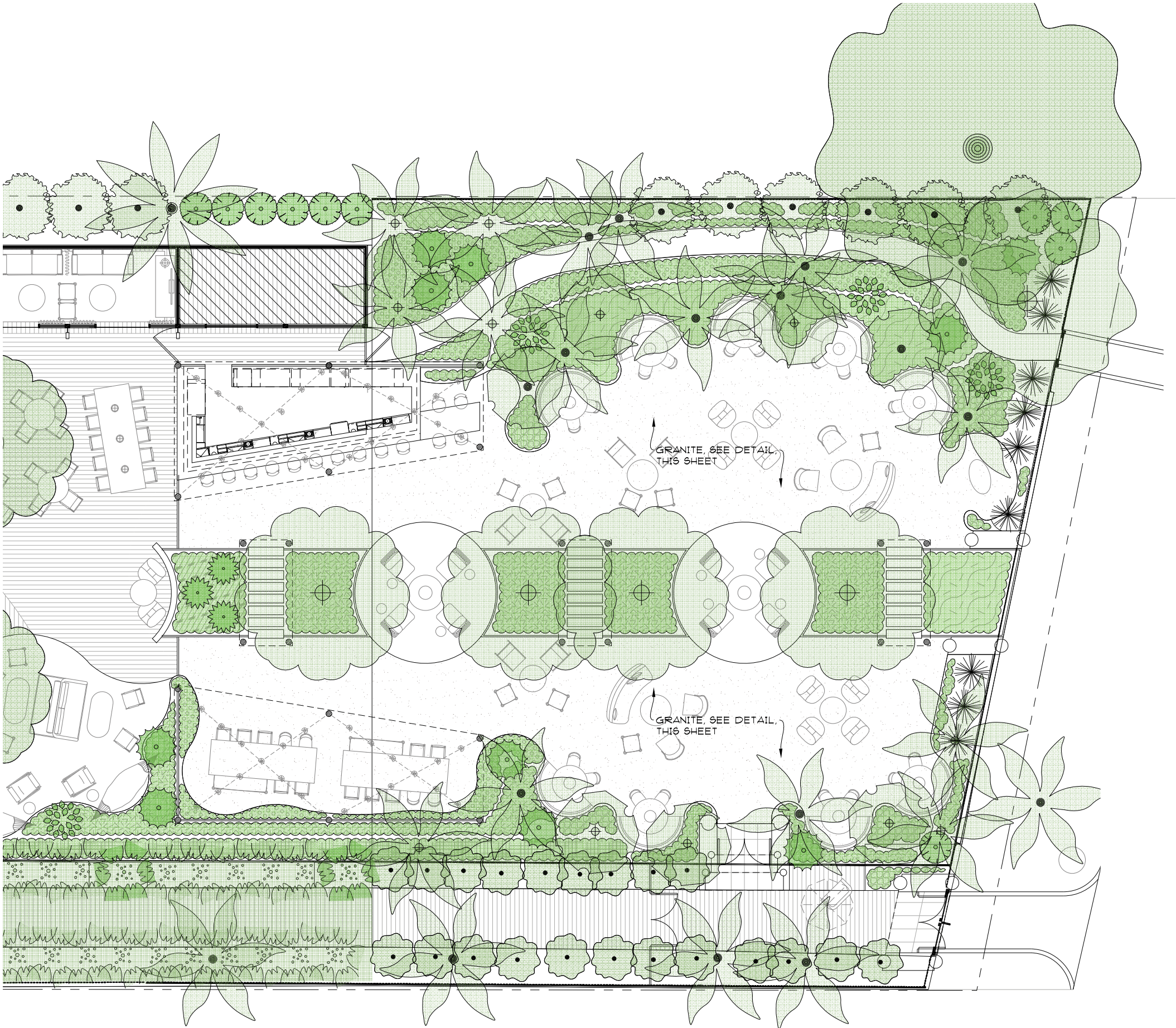


PLANTING DETAILS

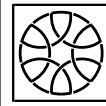


THE DOCUMENT IS THE PROPERTY OF THE UNIVERSITY OF CALIFORNIA. IT IS TO BE USED ONLY FOR THE PROJECT AND NOT TO BE REPRODUCED, COPIED, OR ALTERED IN WHOLE OR IN PART. IT IS TO BE SPECIFICALLY DESTROYED HEREIN AND IS NOT TO BE SUBMITTED FOR REVIEW, APPROVAL, AND REPAIR BY THE APPROVING AGENCY.

LANDSCAPE
ARRIVAL AREA - HARDSCAPE



BARLUME BEACH AREA - HARDSCAPE
SCALE: 3/16" = 1'-0"



GEOMANTIC
DESIGNS, INC.
LANDSCAPE ARCHITECTURE
ROBERT PARSLEY A.S.L.A.
2732 GALLAND STREET - 2ND FLOOR
CORAL GABLES, FLORIDA 33134
PHONE: (305) 665-9088

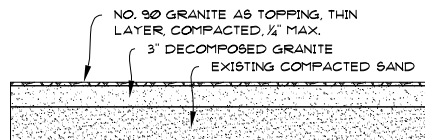
SEAL



DECOMPOSED GRANITE



NO. 90 GRANITE



DETAIL SECTION
SCALE: 1" = 1'-0"

THE DRAWINGS TO BE USED FOR THE PROJECT ARE SET OUT. THE DRAWINGS ARE THE PROPERTY OF THE LANDSCAPE ARCHITECT AND NOT TO BE REPRODUCED, COPIED, OR ALTERED IN ANY MANNER. IT IS THE USER'S RESPONSIBILITY TO OBTAIN NECESSARY PERMITS AND APPROVALS FROM THE APPROPRIATE AGENCIES. THESE DRAWINGS ARE NOT TO BE USED FOR ANY OTHER PROJECTS. THESE DRAWINGS ARE THE PROPERTY OF GEOMANTIC DESIGNS, INC. © COPYRIGHT BY GEOMANTIC DESIGNS, INC.

PROJECT TITLE

THE JAMES NAUTILUS

1825 COLLINS AVENUE MIAMI BEACH, FLORIDA 33139

SHEET TITLE

LANDSCAPE
BARLUME BEACH - HARDSCAPE

PROJECT NO.
2309.00

REVISION DATE(S)

DATE

1/5/2025

HPB

LT-2