

An aerial, black and white photograph of Miami Beach, Florida. The image shows a dense urban landscape with numerous high-rise buildings, including a prominent curved skyscraper on the left. The city extends to the ocean, where a wide beach and waves are visible. The sky is filled with dramatic, cloudy light.

HOUSE OF KIRSCHNER

MIAMI BEACH, FLORIDA

NVID | NOMADAS™

PROPOSAL FOR 4410 ALTON RD PROJECT

Nominated ▼

MCHAP

Mies
Crown Hall
Americas
Prize 16/17

"ON" PRIZE
OSCAR NIEMEYER AWARD

BIAU
Iberoamerican Biennale
of Architecture and Urbanism



Winner ▼

XIVBA13

Bienal
Internacional de
Arquitectura
de Buenos Aires

- Young Generation Award -



- Honorable Mention for the Guaparo House -

VIIIBASC
INTERNATIONAL ARCHITECTURE BIENNALE OF SANTA CRUZ 2020

- Honorable Mention for the Guaparo House -

Invited ▼



ARCHITECTURE:

NMD | NOMADAS™

GENERAL CONTRACTOR:

AMARILLA
CONSTRUCTION. AN ACT *of* LOVE

INTERIOR DESIGN:

HADA
× HOK

MEP:

INGEMEL S.A.
ENGINEERING COMPANY



EOR – STRUCTURAL:



STRUCTURAL:



LIGHTING CONSULTANT:

difuso

CIVIL:



LANDSCAPE:

jardínsustentable

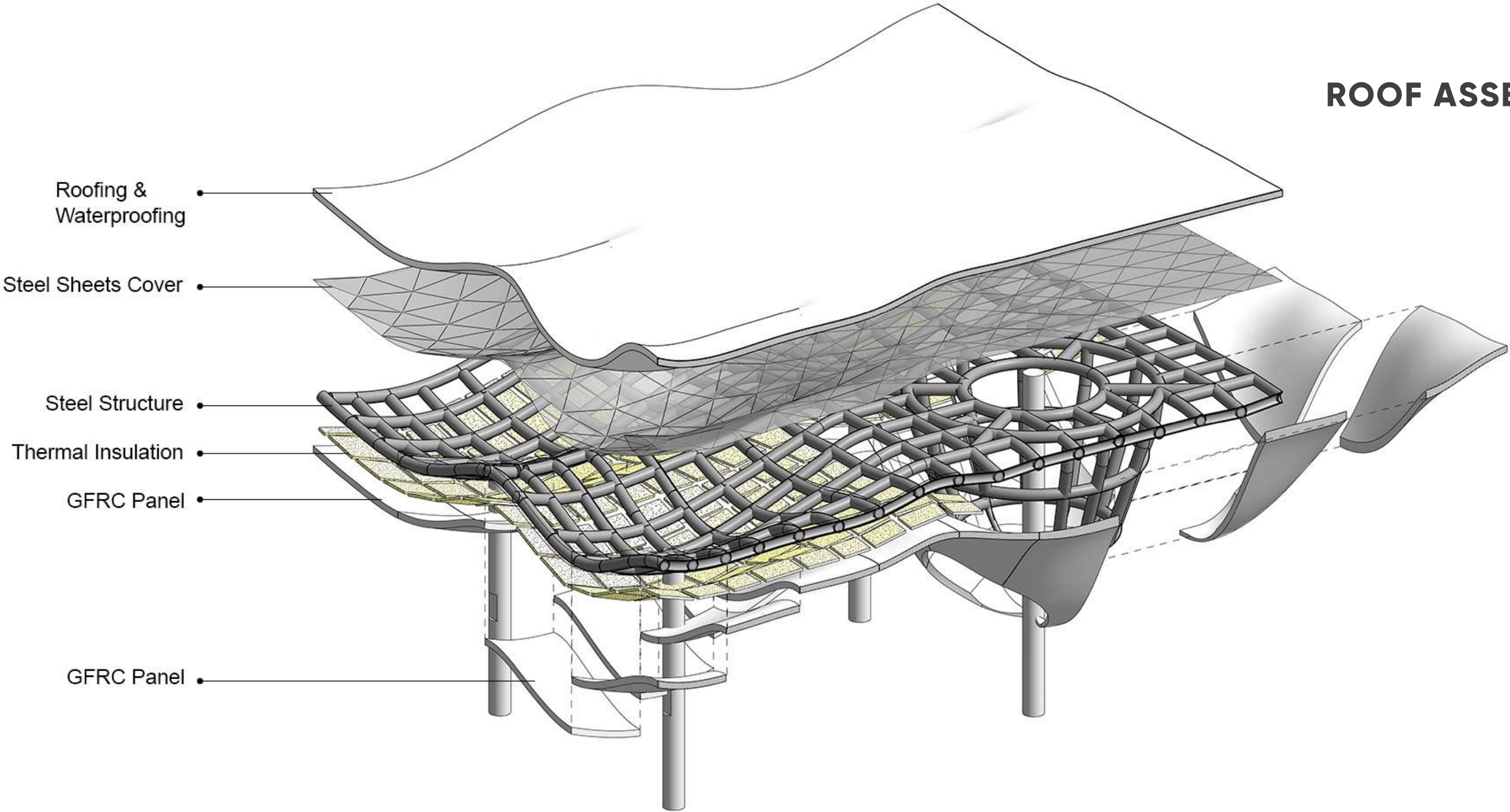


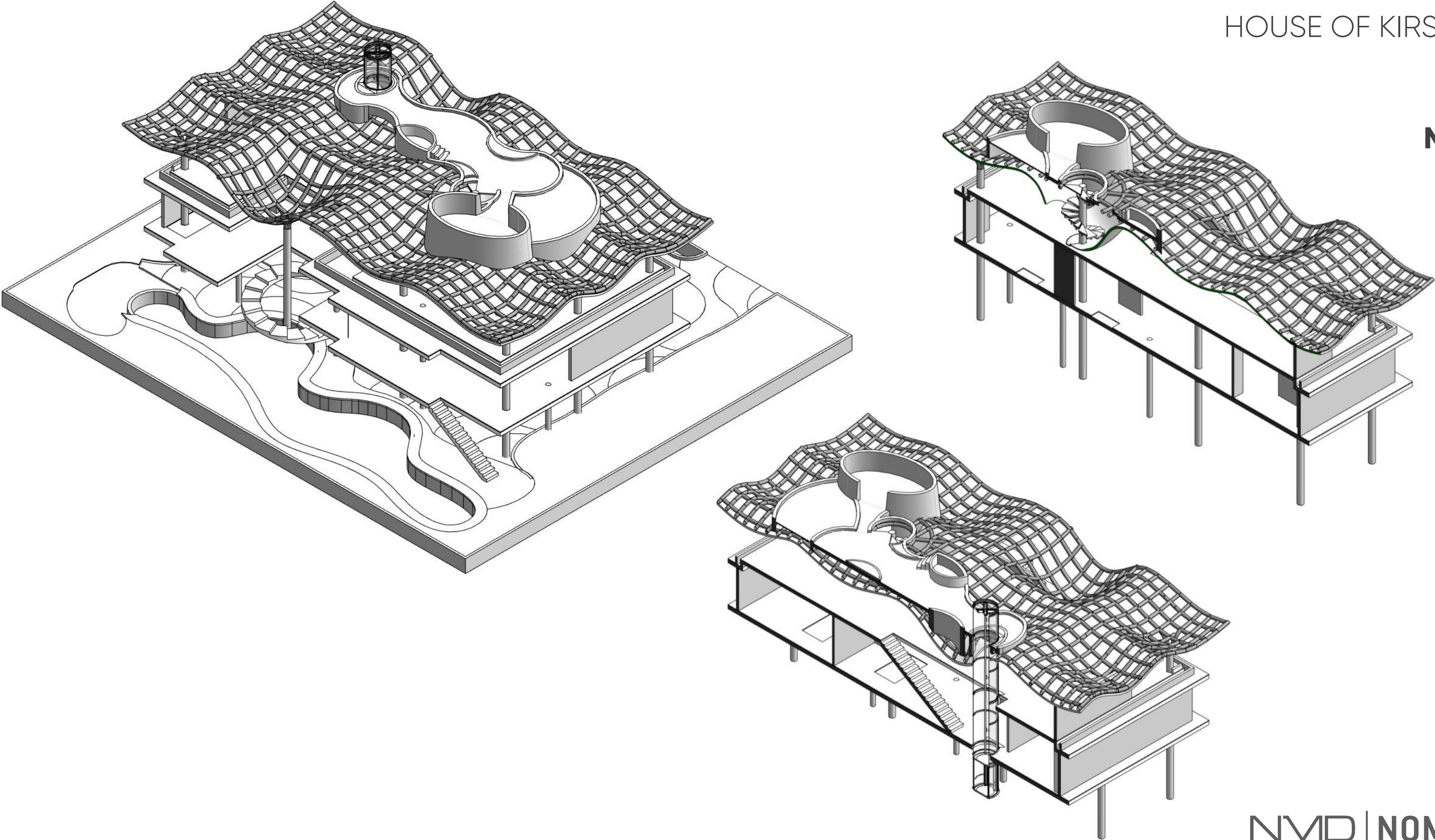
GREEN EARTH
LANDSCAPE ARCHITECTURE, LLC
WILTON MANORS, FLORIDA
E-MAIL: dale.bryant@greenearthla.com PHONE: 954-638-9825



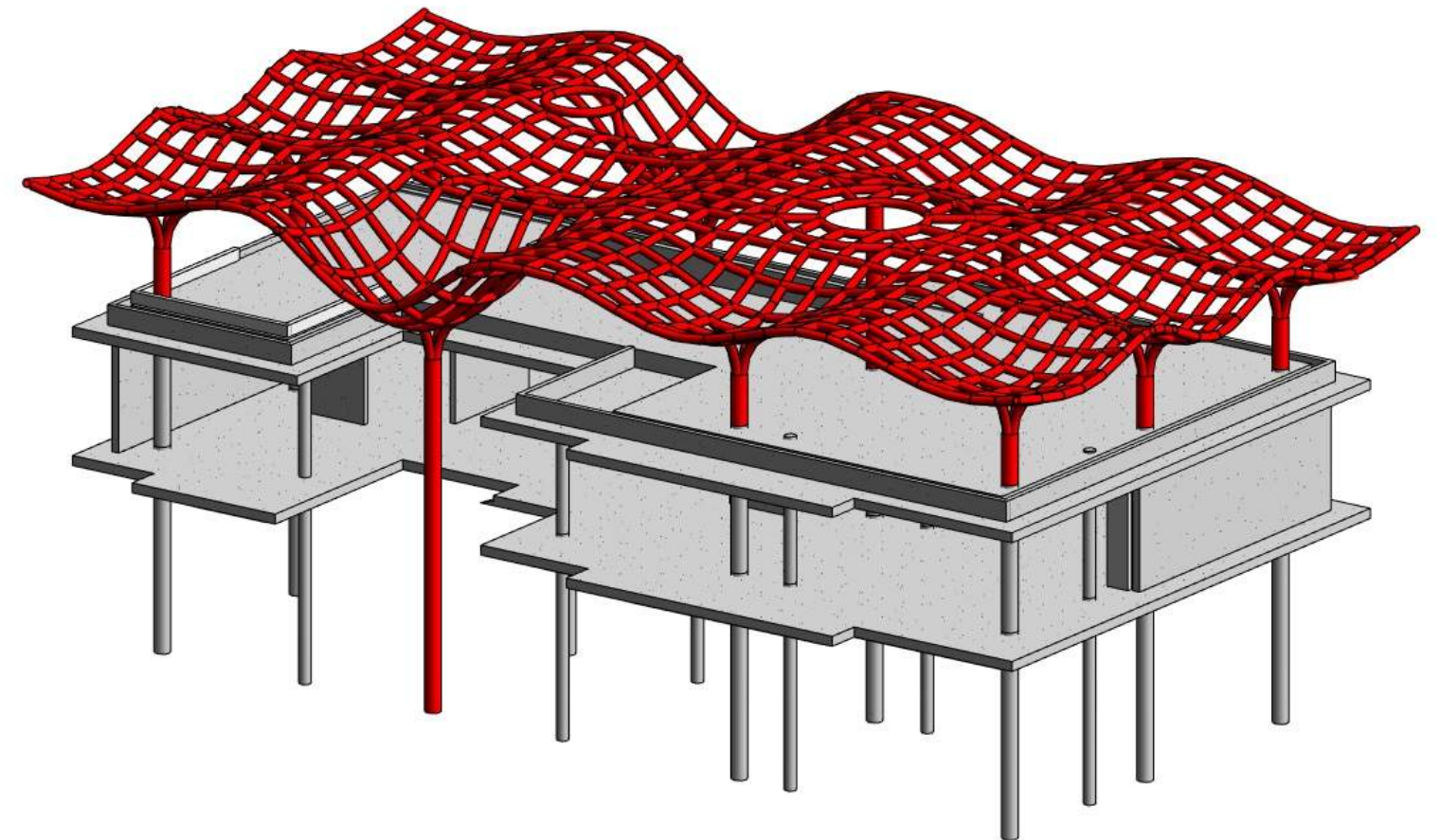
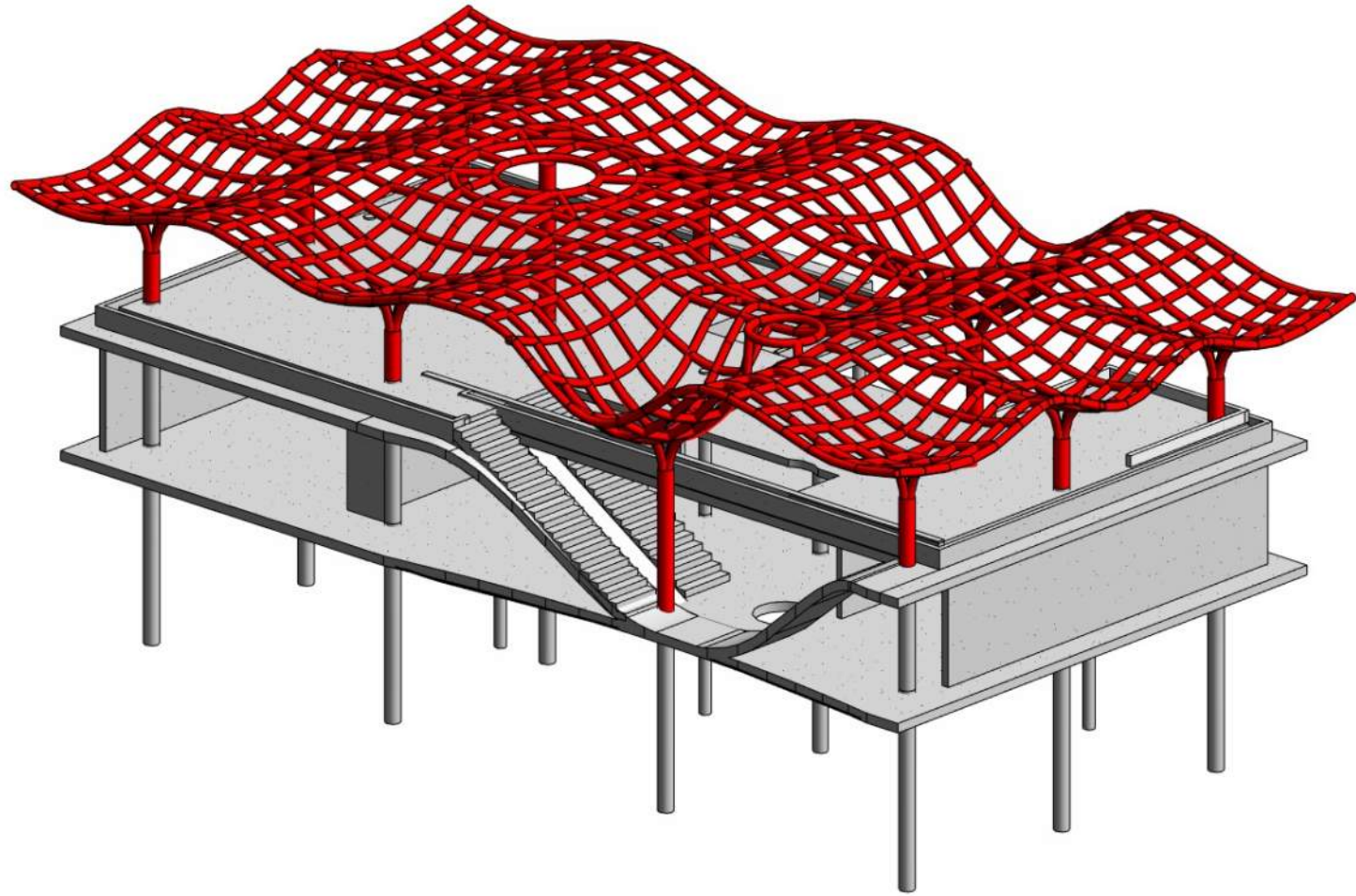
ROOF PROPOSAL

ROOF ASSEMBLY

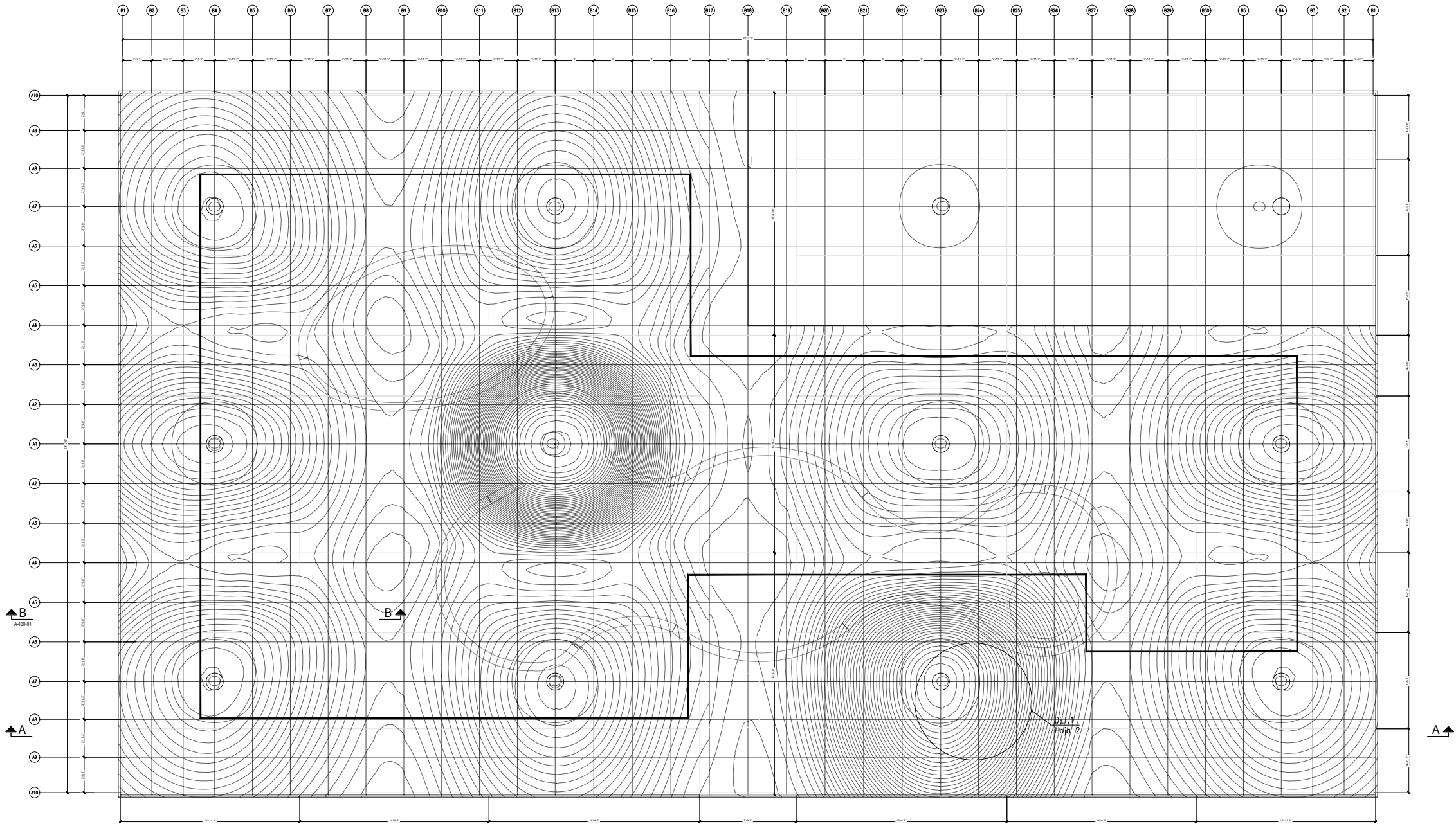




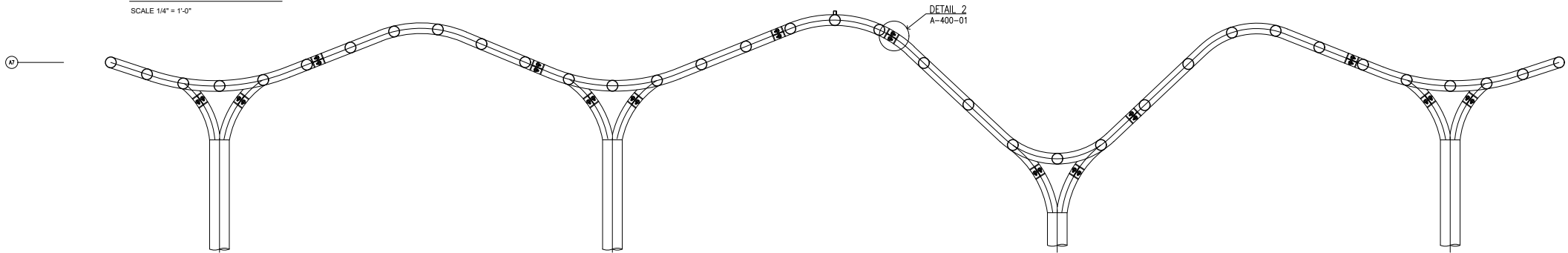
ROOF MODEL



SCHEMATIC ROOF
FRAMING



METAL FRAMING PLANT
SCALE 1/4" = 1'-0"

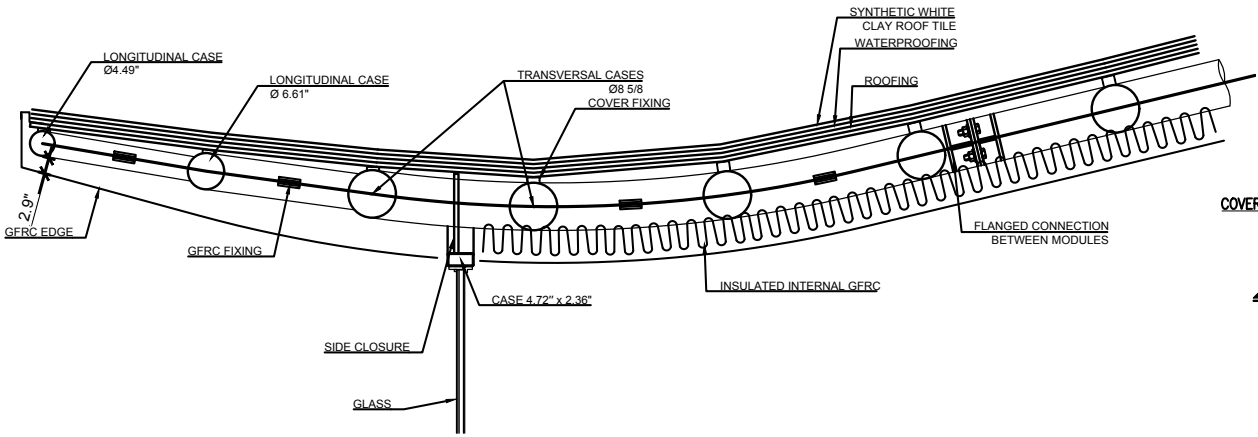


SECTION A-A
SCALE 1/4" = 1'-0"

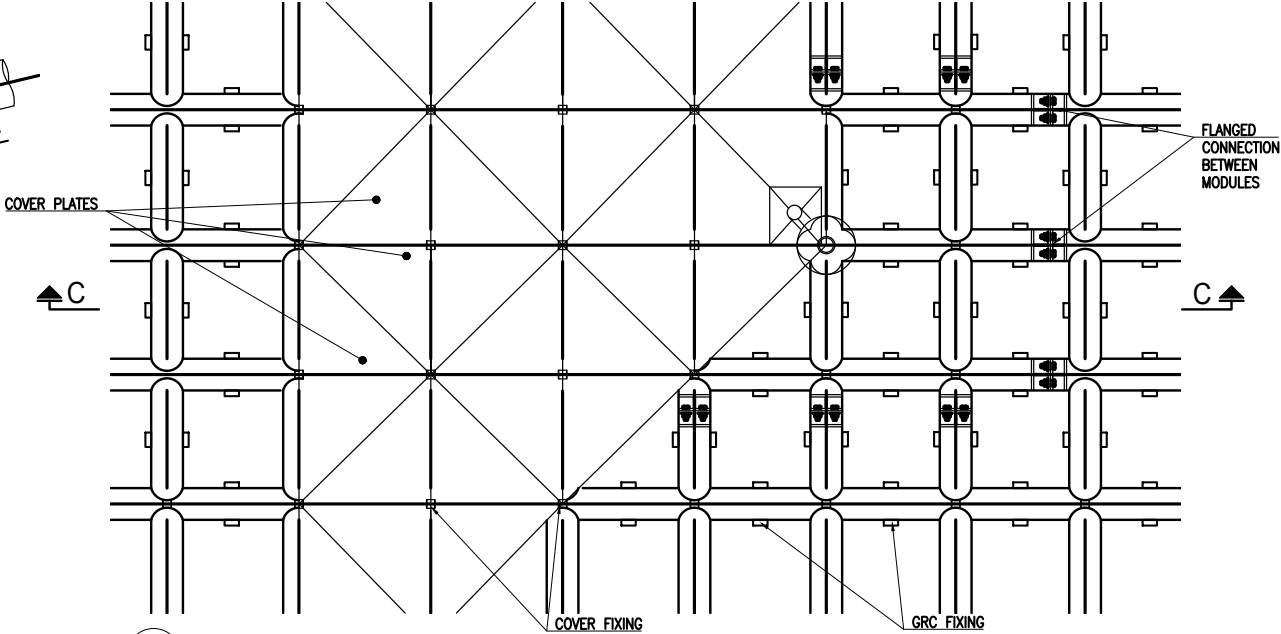


NORTH

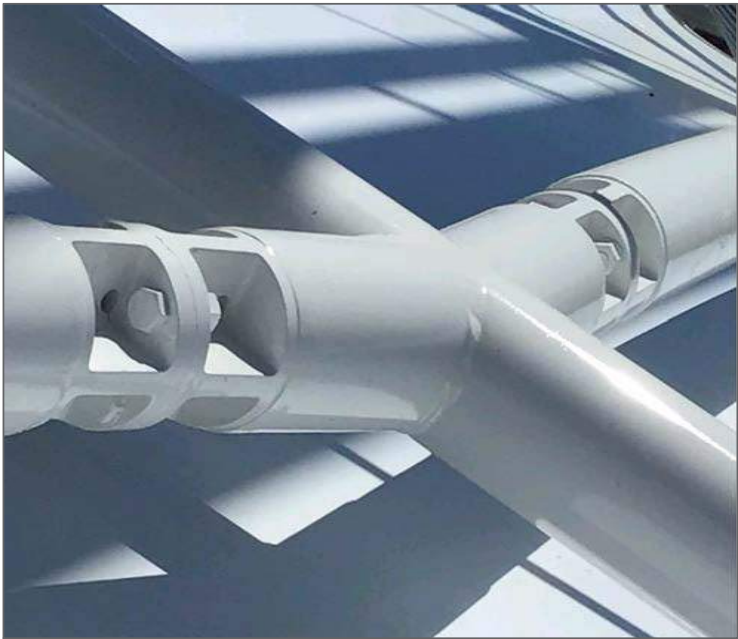
SCHEMATIC ROOF ASSEMBLY



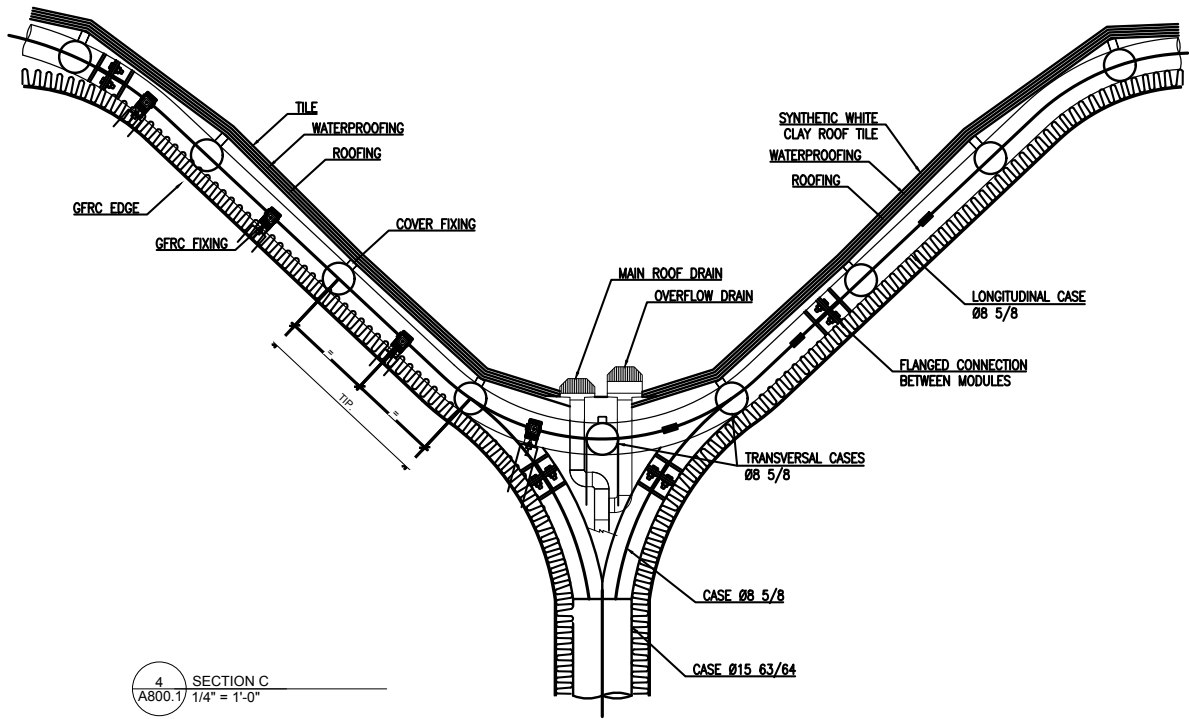
1 SECTION B
A800.1 3/8" = 1'-0"



3 DETAIL 1
A800.1 1/4" = 1'-0"



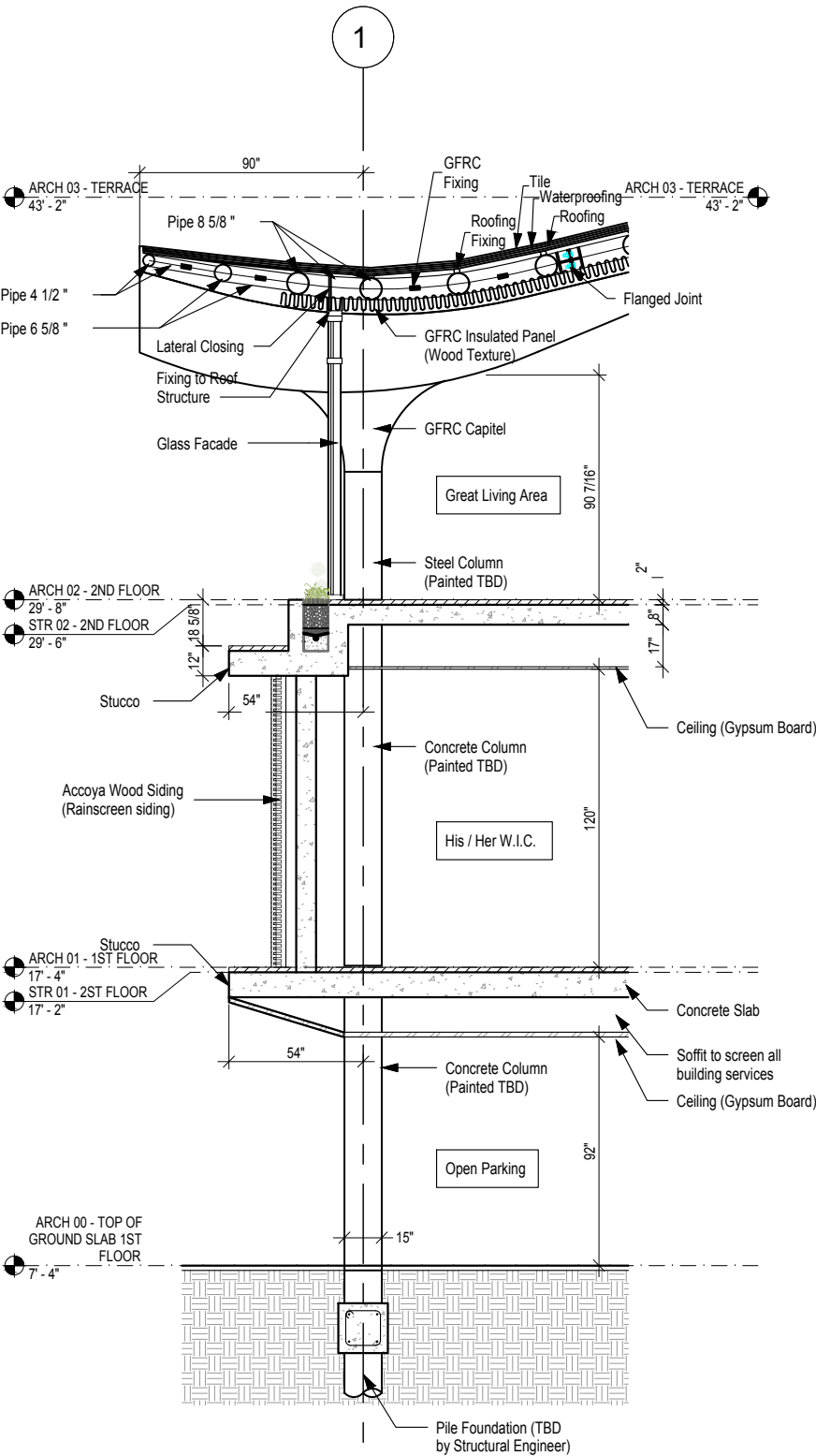
2 DETAIL 2 - FLANGED JOINT
A800.1



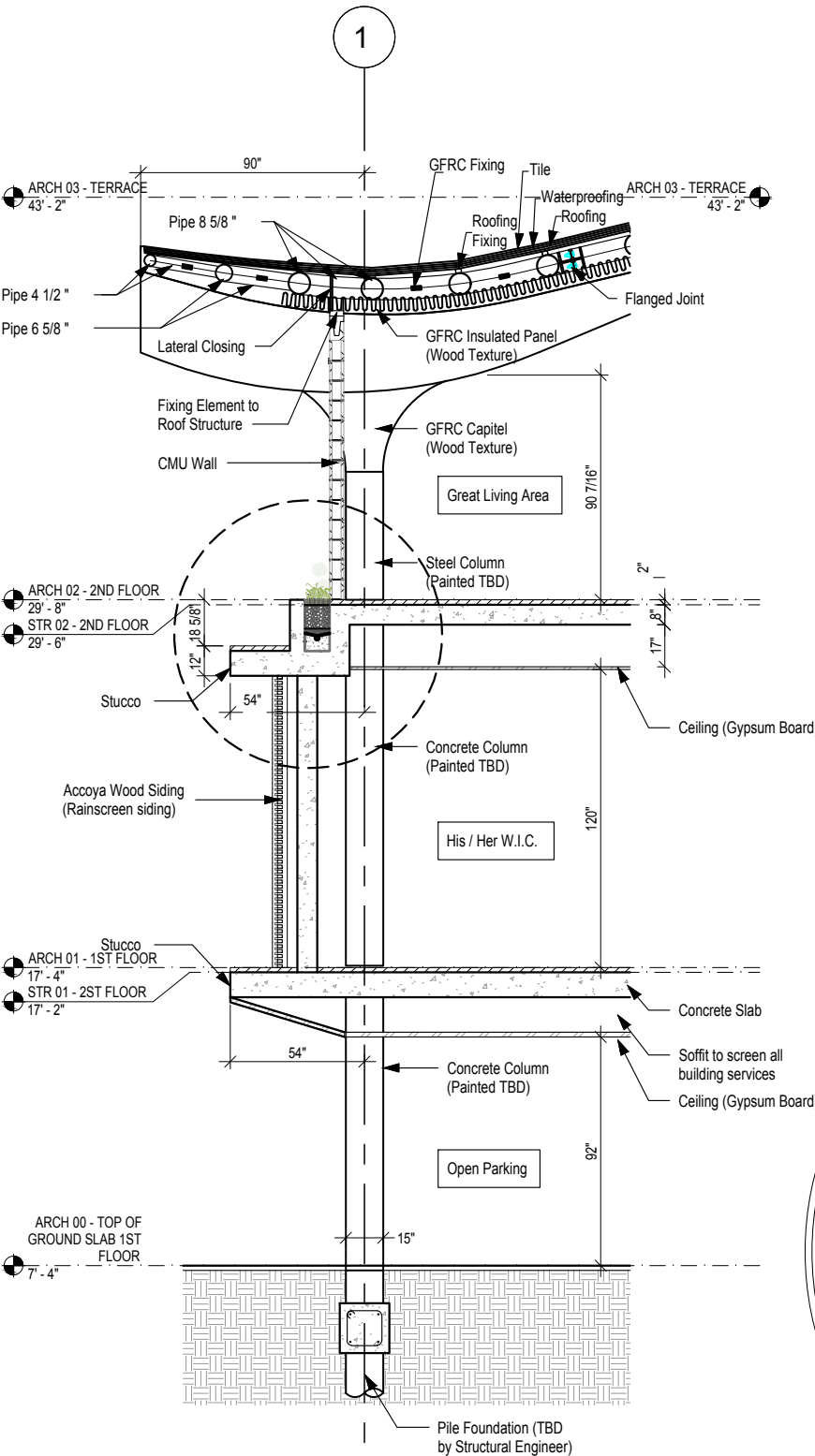
4 SECTION C
A800.1 1/4" = 1'-0"

GENERAL NOTES:
- PROJECT CONSTRUCTION DETAILS ARE BASED ON
GENERIC PRODUCT AND MATERIAL SELECTIONS TO
MEET GENERAL COMPLIANCE WITH THE DESIGN
CONCEPT OF THE PROJECT. THE CONTRACTOR IS
RESPONSIBLE FOR ADDITIONAL FABRICATION
AND/OR DETAILED INSTALLATION INFORMATION OF
SPECIFIC MANUFACTURER'S PRODUCTS AND
MATERIALS AND SATISFACTORY PERFORMANCE OF
THE RELATED WORK.

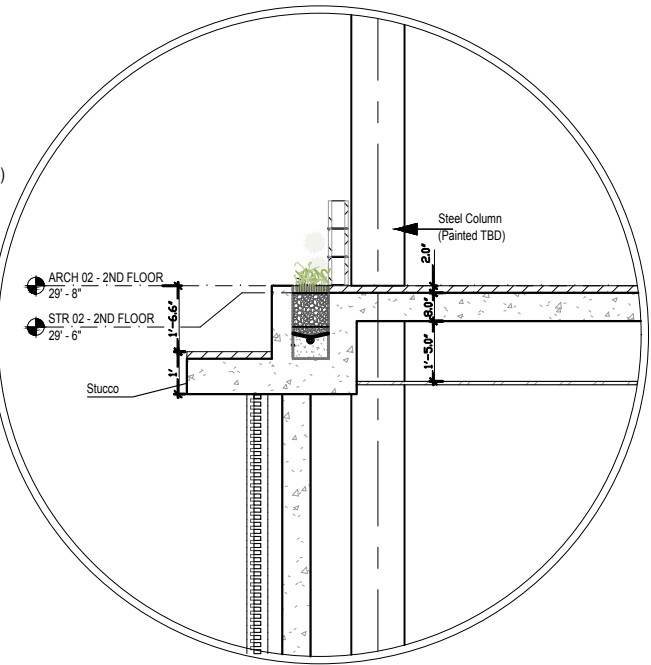
TYPICAL WALL SECTIONS



1 TYP. SECTION - CURTAIN WALL
3/16" = 1'-0"



2 TYP. SECTION - CMU WALL
3/16" = 1'-0"



3 DETAIL - PLANTER DRAIN
1/4" = 1'-0"

SIMILAR PROJECTS

REFERENCE IMAGES OF ANALOGOUS PROJECTS

Sample Project: Heydar Aliyev Center



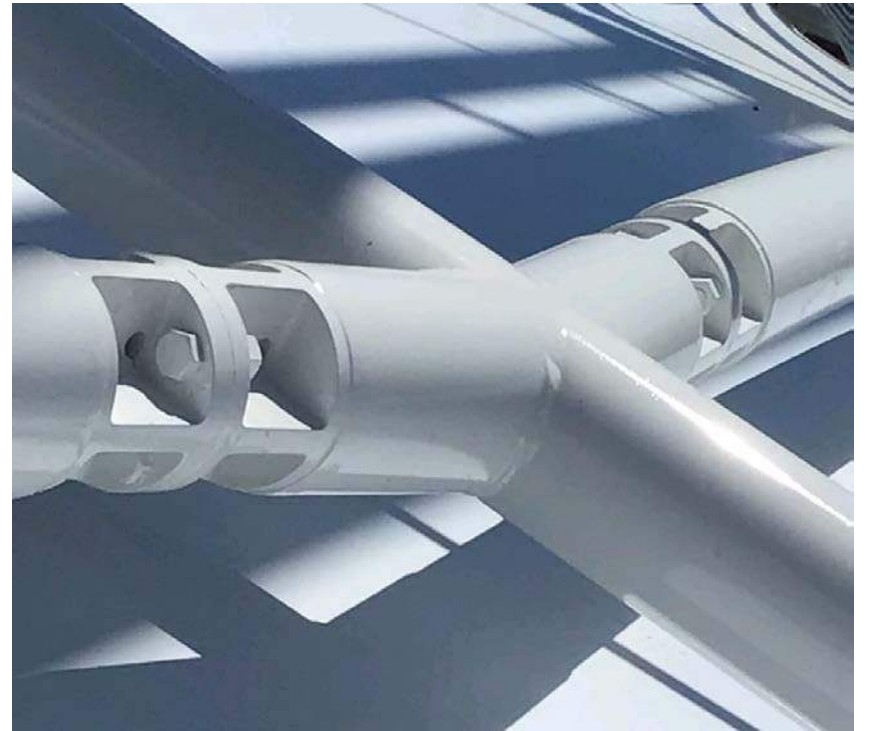
- **Project Name:** Heydar Aliyev Center
- **Designed by:** architect Zaha Hadid
- **Location:** Baku, Azerbaijan
- **Construction system:** Structure with a space frame made of steel, and with Glass Fiber Reinforced Concrete (GFRC) on the interior and exterior, as well as Glass Fiber Reinforced Polyester (GFRP).



HOUSE OF KIRSCHNER

REFERENCE PROJECT





HOUSE OF KIRSCHNER



HOUSE OF KIRSCHNER



HOUSE OF KIRSCHNER



HOUSE OF KIRSCHNER



HOUSE OF KIRSCHNER

HOUSE OF KIRSCHNER

HOUSE OF KIRSCHNER



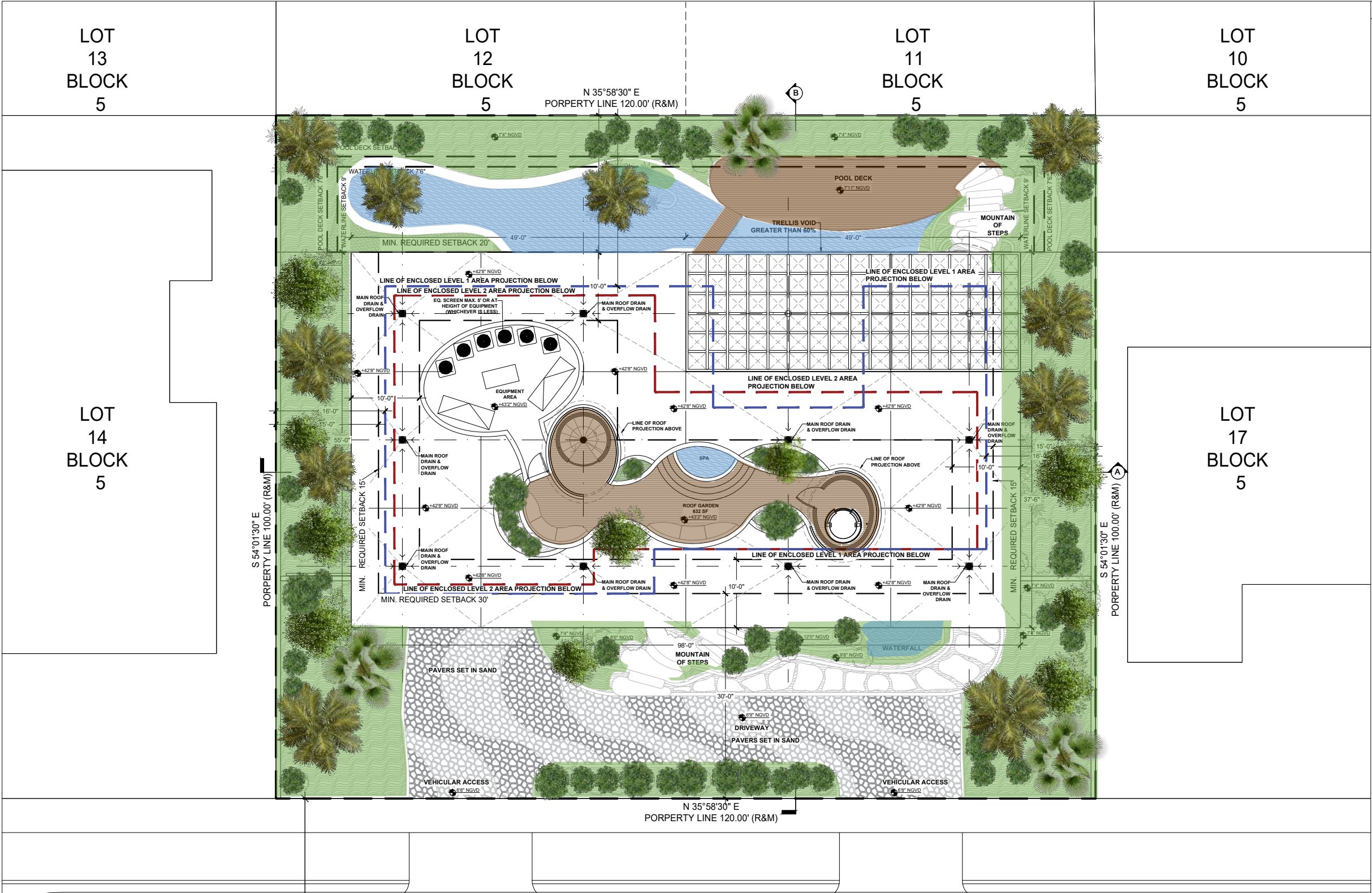
HOUSE OF KIRSCHNER



HOUSE OF KIRSCHNER



SITE PLAN



NORTH

UNDERSTORY LEVEL

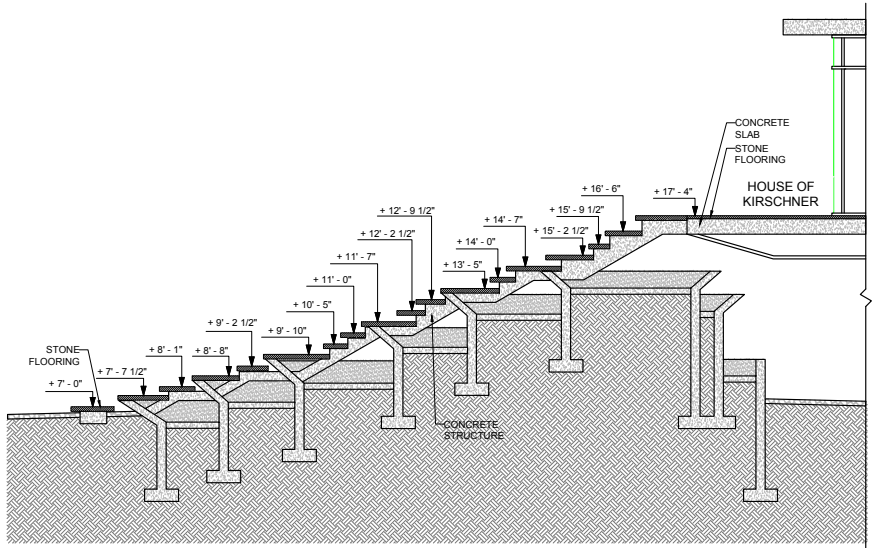
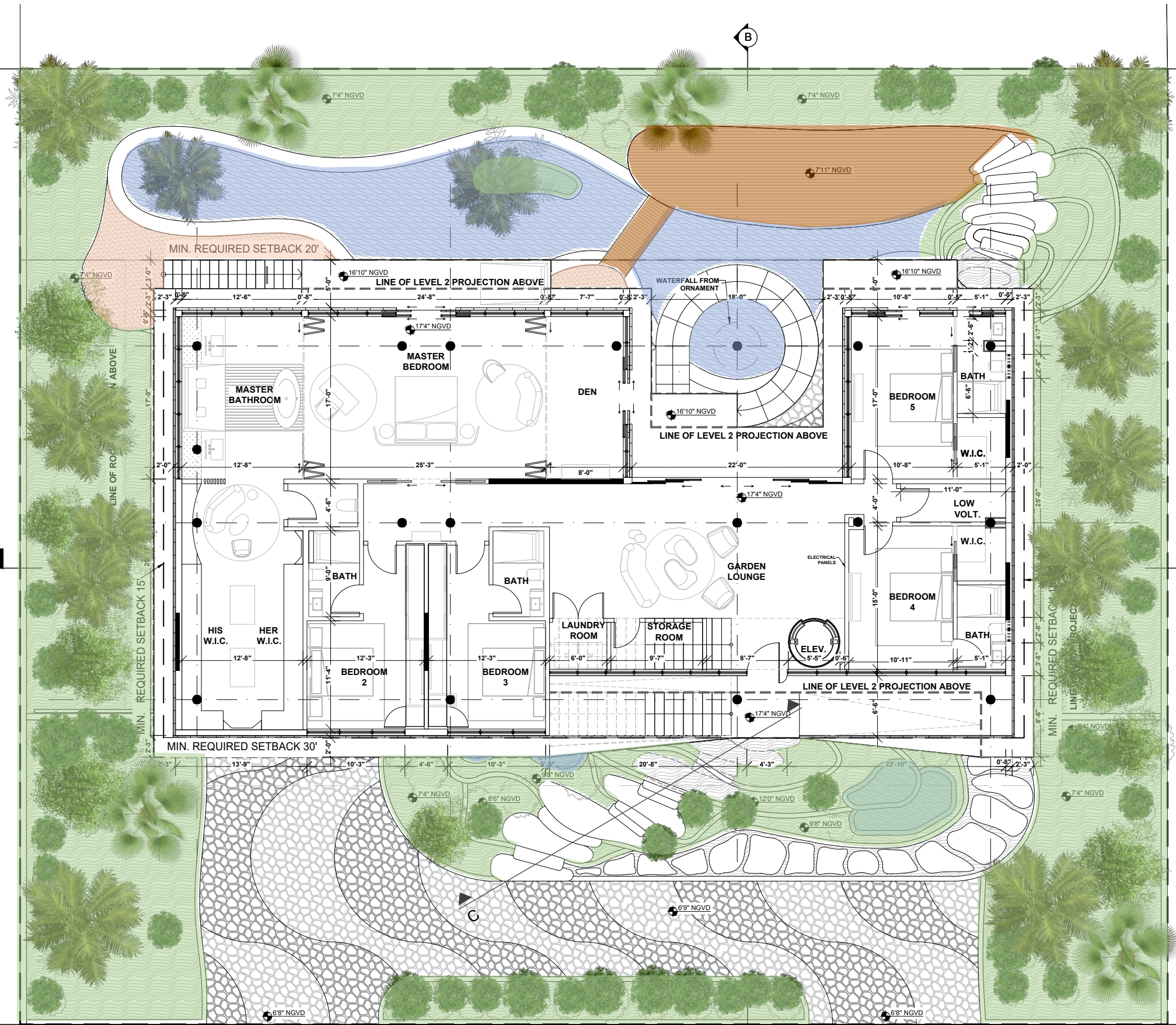


1 UNDERSTORY LEVEL
A101 3/32" = 1'-0"



HOUSE OF KIRSCHNER

LEVEL 1



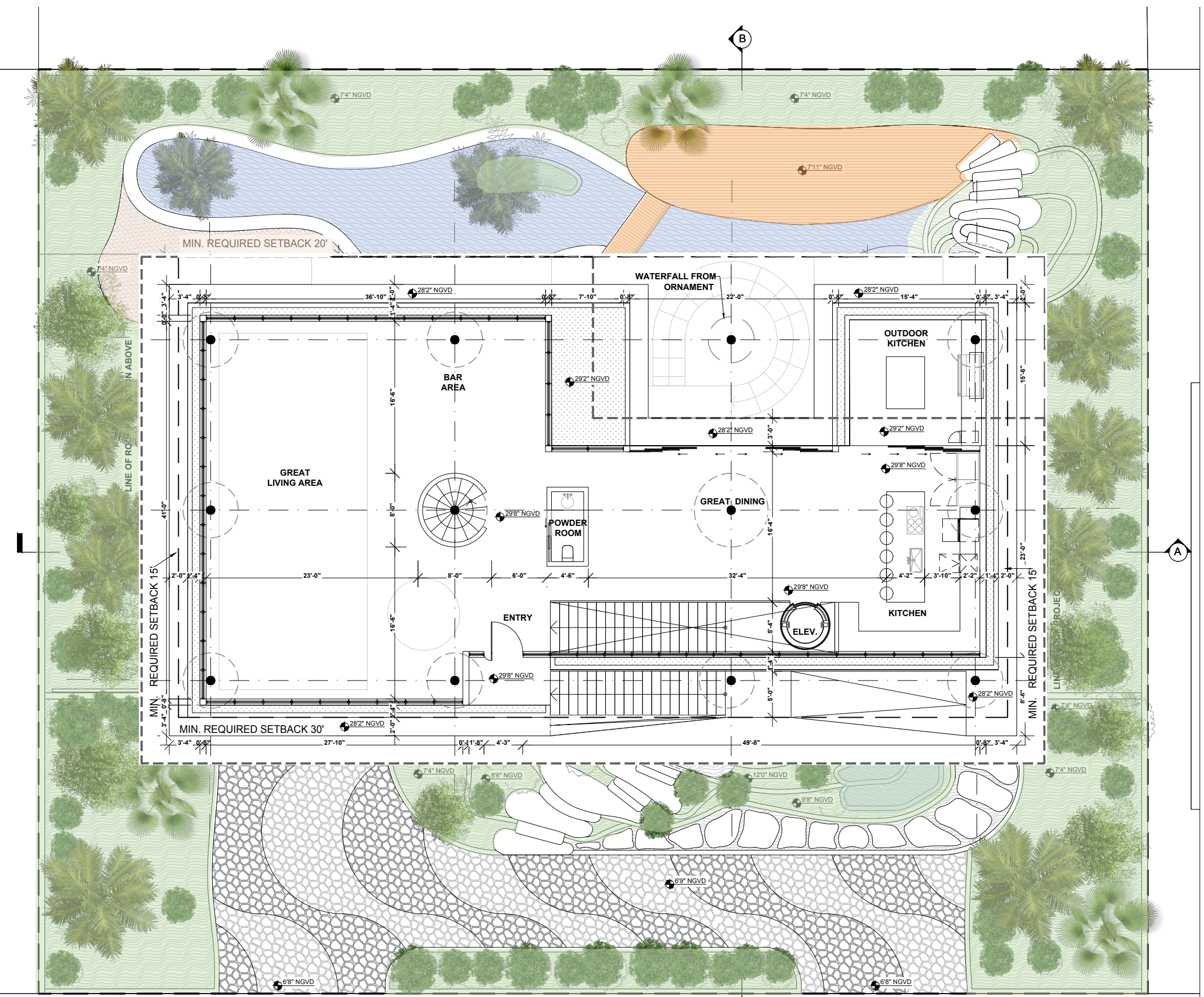
SECTION C - Mountain Steps



NMD | NOMADAS™

HOUSE OF KIRSCHNER

LEVEL 2



1 LEVEL 1
A102 3/32" = 1'-0"



NMD | NOMADAS™

ROOF LEVEL



NORTH

NMD | NOMADAS™

We **understand** that **change** is the essence of our era.

We **aim** to **transform** the ways we **see** and **do**.

We **believe** in building a better quality of **human life**,
bringing improvement to **urban life**, and in responsibly and
consciously increasing **economic** profitability.

We believe in ethics as a platform for thought and action.

NMD | NOMADAS™

MIAMI • BOSTON • HOUSTON

COPYRIGHT © 2024 NMD NOMADAS ALL RIGHTS RESERVED