

1 SOUTH ELEVATION
SCALE: 3/16" = 1'-0"

ARCHITECT:

URBAN ROBOT LLC
420 LINCOLN ROAD, S. 406
MIAMI BEACH, FL 33139
(786) 246-4857
(786) 768-2537, F

STRUCTURAL ENGINEER:

M.E.P. ENGINEERS:

CIVIL ENGINEERS:

GENERAL CONTRACTOR:

29 INDIAN CREEK
2911 INDIAN CREEK DRIVE :: MIAMI BEACH, FL 33139

SEAL

URBAN ROBOT LLC
A268002760 E268001534 LC268000510

REVISIONS

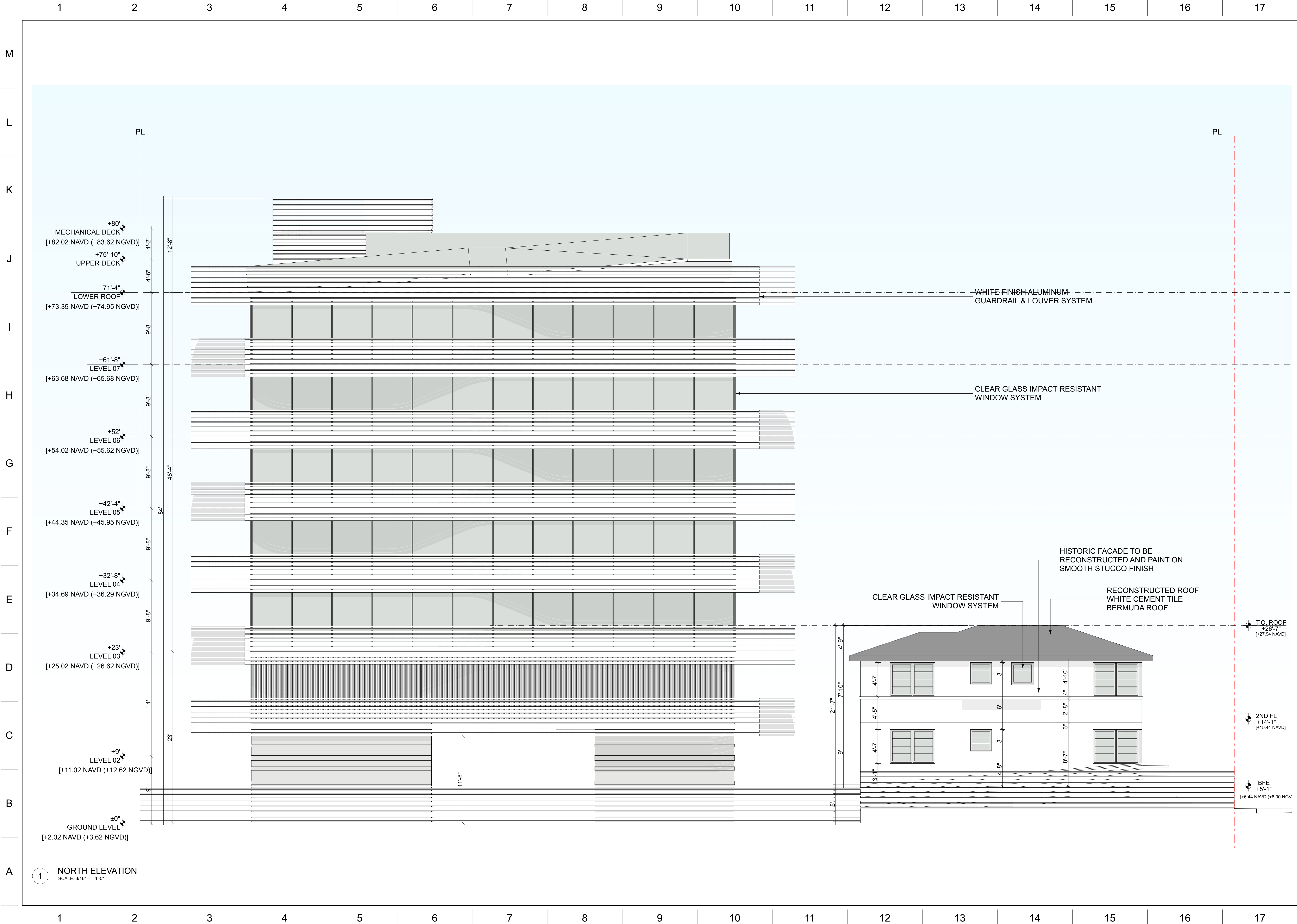
2002
PROJECT NO.

8/2/24
DATE

SV / JJ / AB
DRAWN / CHECKED

BUILDING SOUTH
ELEVATION

A-30



ARCHITECT:

URBAN ROBOT LLC
420 LINCOLN ROAD, S. 406
MIAMI BEACH, FL 33139
(786) 246-4857
(786) 768-2537, F

STRUCTURAL ENGINEER:

M.E.P. ENGINEERS:

CIVIL ENGINEERS:

GENERAL CONTRACTOR:

29 INDIAN CREEK
2911 INDIAN CREEK DRIVE :: MIAMI BEACH, FL 33139

SEAL

URBAN ROBOT LLC
A208002760 E208001534 LC208000510

REVISIONS

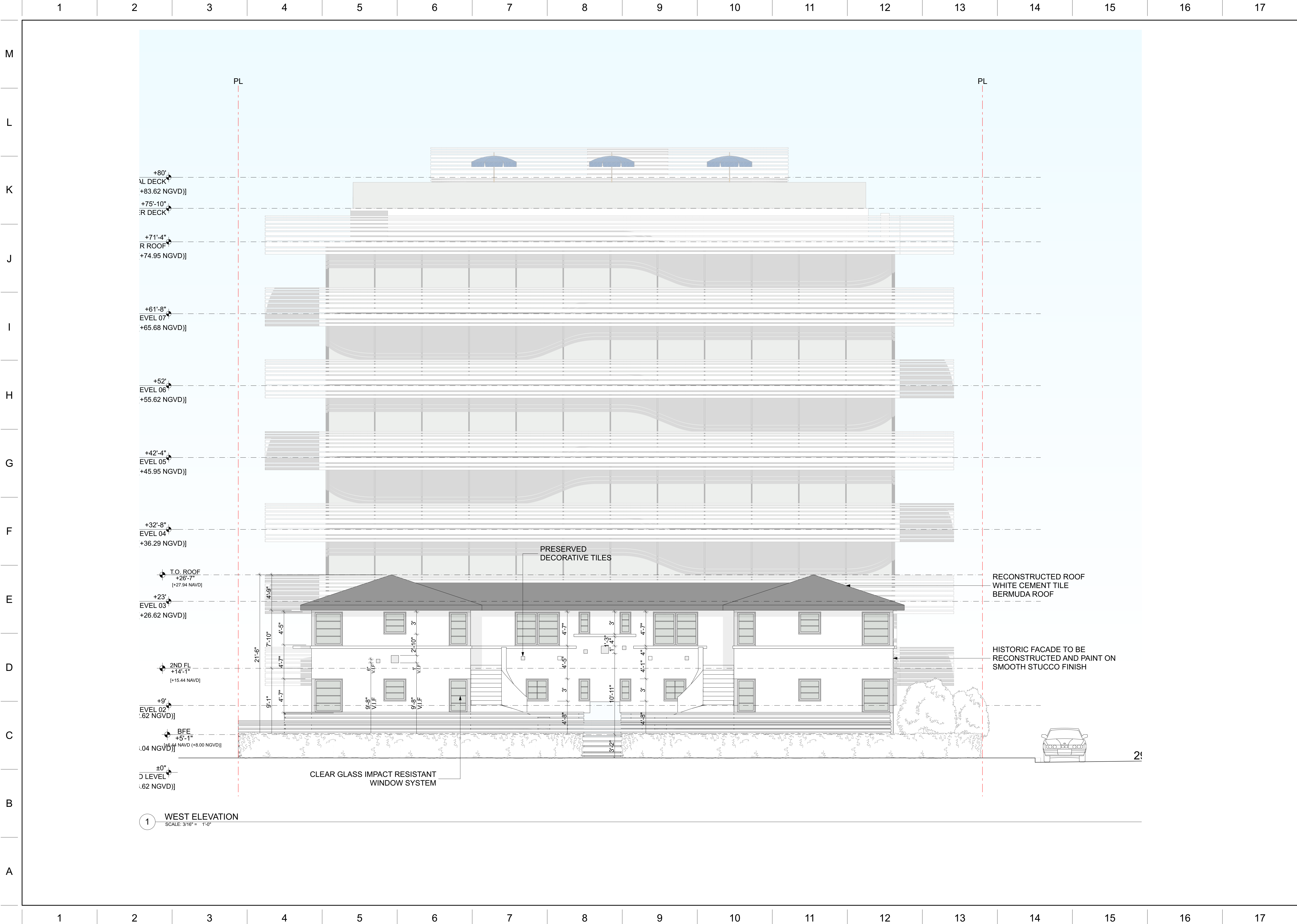
2002
PROJECT NO.

8/2/24
DATE

SV / JJ / AB
DRAWN / CHECKED

BUILDING NORTH
ELEVATION

A-31



ARCHITECT:

URBAN ROBOT LLC
420 LINCOLN ROAD, S. 406
MIAMI BEACH, FL 33139
(786) 246-4857
(786) 768-2537, F

STRUCTURAL ENGINEER:

M.E.P. ENGINEERS:

CIVIL ENGINEERS:

GENERAL CONTRACTOR:

29 INDIAN CREEK

2911 INDIAN CREEK DRIVE :: MIAMI BEACH, FL 33139

SEAL

URBAN ROBOT LLC
A208002760 B26001534 LC26000510

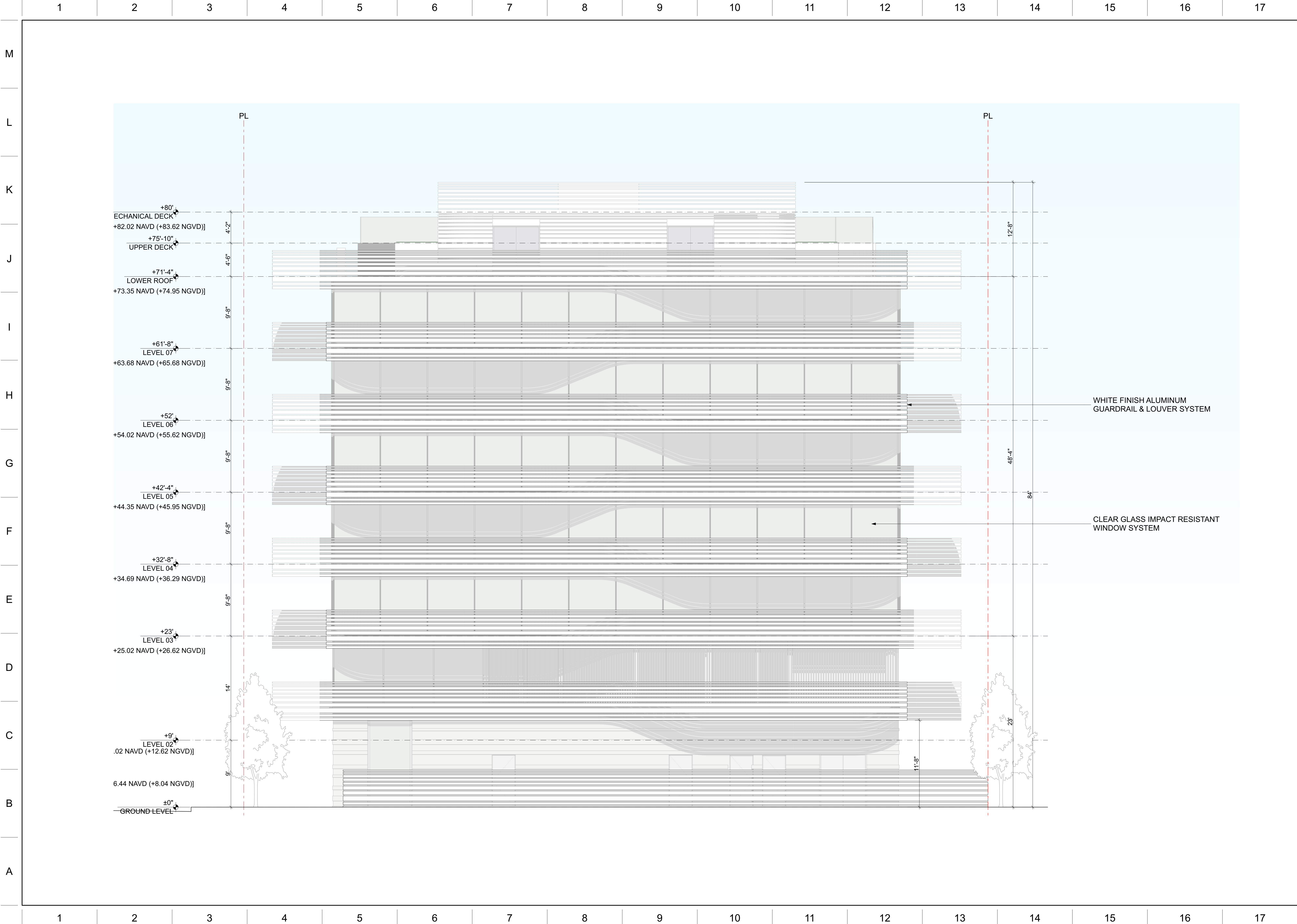
REVISIONS

2002
PROJECT NO.

8/2/24
DATE

SV / JJ / AB
DRAWN / CHECKED

BUILDING WEST
ELEVATION



ARCHITECT:

URBAN ROBOT LLC
420 LINCOLN ROAD, S. 406
MIAMI BEACH, FL 33139
(786) 246-4857
(786) 768-2537, F

STRUCTURAL ENGINEER:

M.E.P. ENGINEERS:

CIVIL ENGINEERS:

GENERAL CONTRACTOR:

29 INDIAN CREEK
2911 INDIAN CREEK DRIVE :: MIAMI BEACH, FL 33139

SEAL

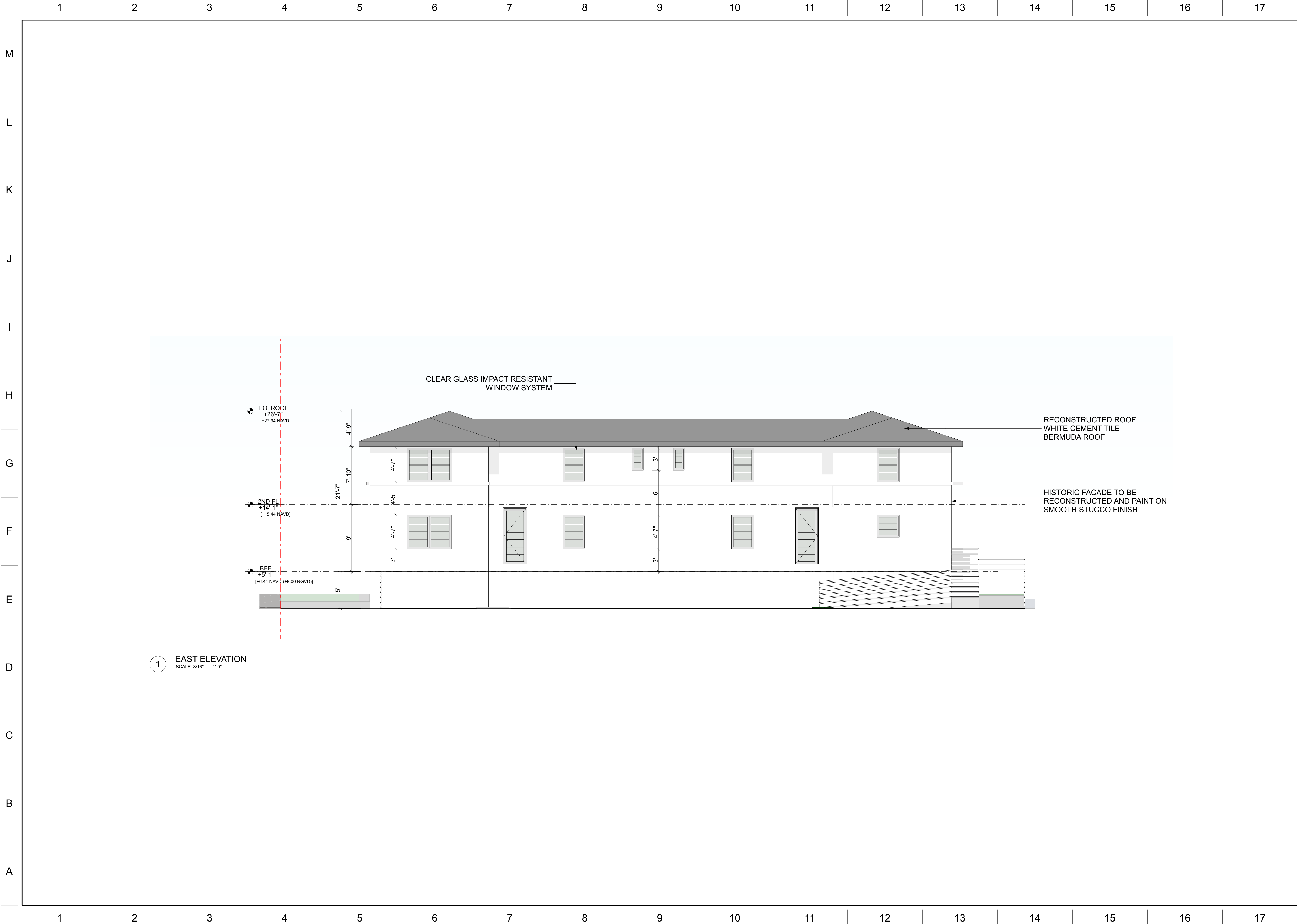
URBAN ROBOT LLC
A268002760 B268001534 LC268000510

REVISIONS

2002
PROJECT NO.
8/2/24
DATE
SV / JJ / AB
DRAWN / CHECKED

TOWER EAST
ELEVATION

A-33



ARCHITECT:

URBAN ROBOT LLC
420 LINCOLN ROAD, S. 406
MIAMI BEACH, FL 33139
(786) 246-4857
(786) 768-2537, F

STRUCTURAL ENGINEER:

M.E.P. ENGINEERS:

CIVIL ENGINEERS:

GENERAL CONTRACTOR:

29 INDIAN CREEK
2911 INDIAN CREEK DRIVE :: MIAMI BEACH, FL 33139

SEAL

URBAN ROBOT LLC
A026002760 B26001534 LC26000510

REVISIONS

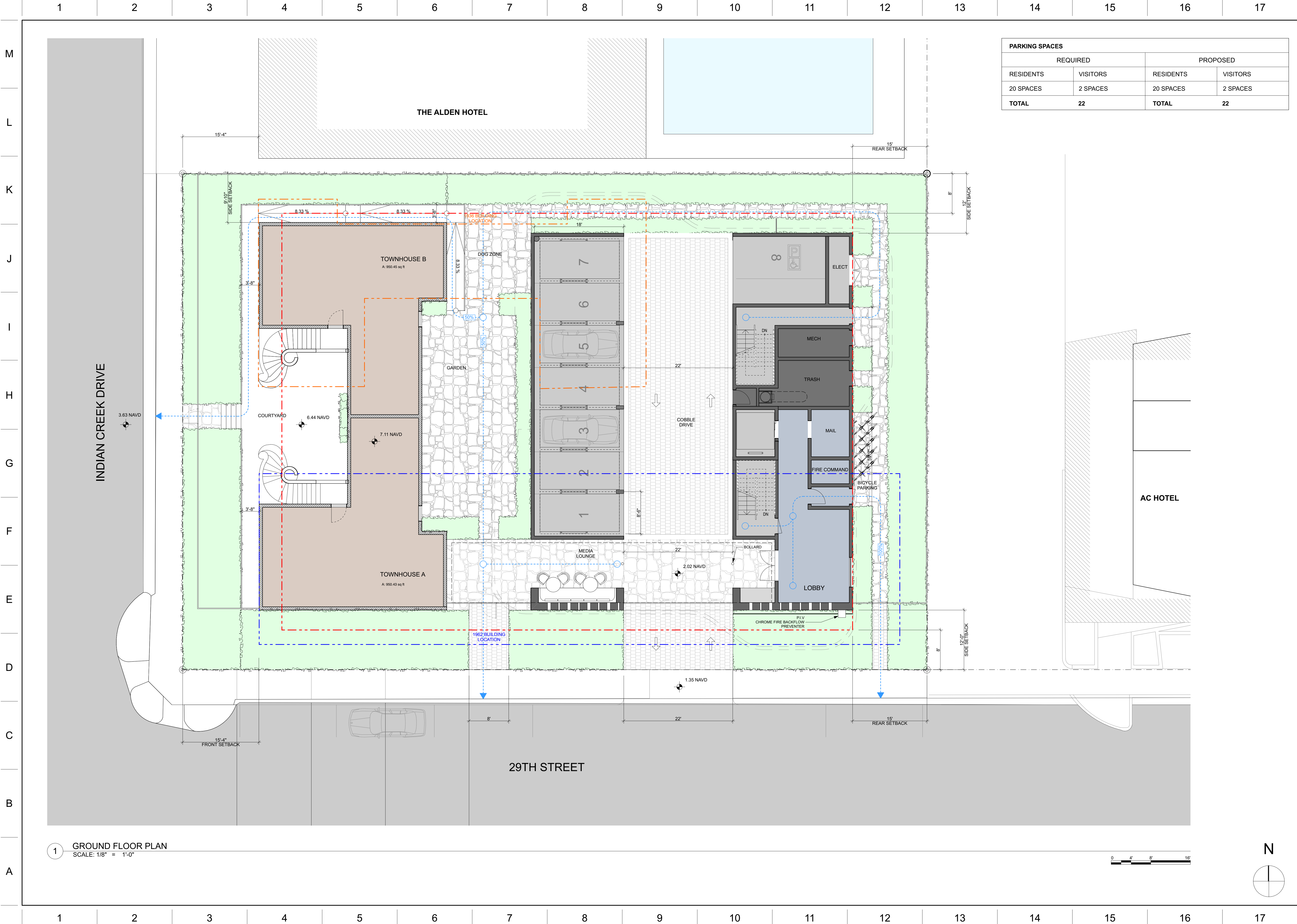
2002
PROJECT NO.

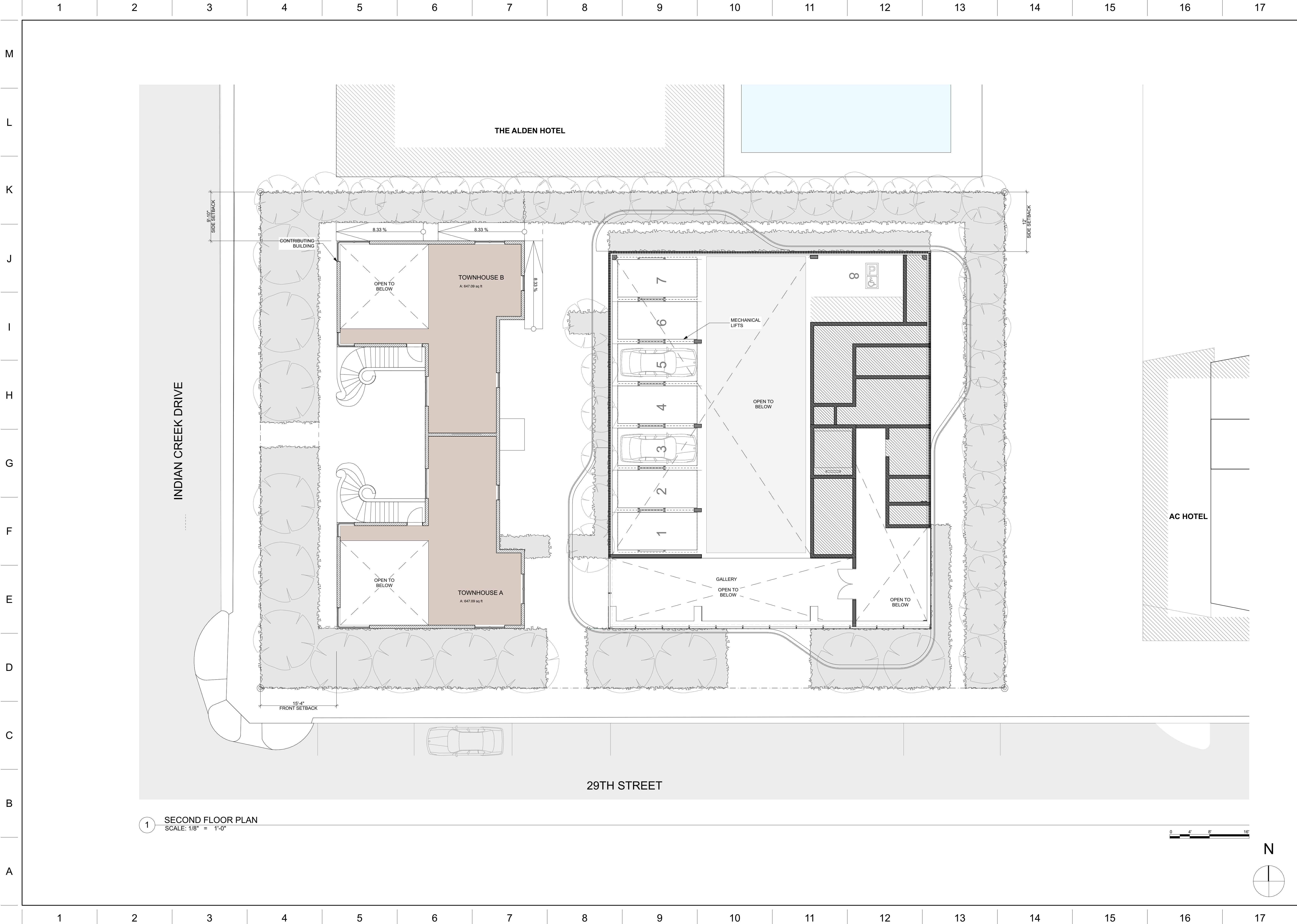
8/2/24
DATE

SV / JJ / AB
DRAWN / CHECKED

HISTORIC
BUILDING EAST
ELEVATION

A-34





ARCHITECT:

URBAN ROBOT LLC
420 LINCOLN ROAD, S. 406
MIAMI BEACH, FL 33139
(786) 246-4857
(786) 768-2537, F

STRUCTURAL ENGINEER:

M.E.P. ENGINEERS:

CIVIL ENGINEERS:

GENERAL CONTRACTOR:

29 INDIAN CREEK
2911 INDIAN CREEK DRIVE :: MIAMI BEACH, FL 33139

SEAL

URBAN ROBOT LLC
AA26002760 EB26001534 LC26000510

REVISIONS

2002
PROJECT NO.

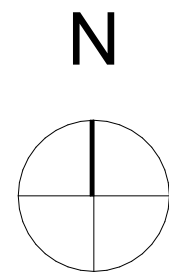
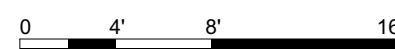
8/2/24
DATE

SV / JJ / AB
DRAWN / CHECKED

SECOND FLOOR

A-36

1 TYPICAL FLOOR PLAN 3, 5, 7
SCALE: 1/8" = 1'-0"



ARCHITECT:

URBAN ROBOT LLC
420 LINCOLN ROAD, S. 406
MIAMI BEACH, FL 33139
(786) 246-4857
(786) 768-2537, F

STRUCTURAL ENGINEER:

M.E.P. ENGINEERS:

CIVIL ENGINEERS:

GENERAL CONTRACTOR:

29 INDIAN CREEK

2911 INDIAN CREEK DRIVE :: MIAMI BEACH, FL 33139

SEAL

URBAN ROBOT LLC
A26002760 B26001534 LC26000510

REVISIONS

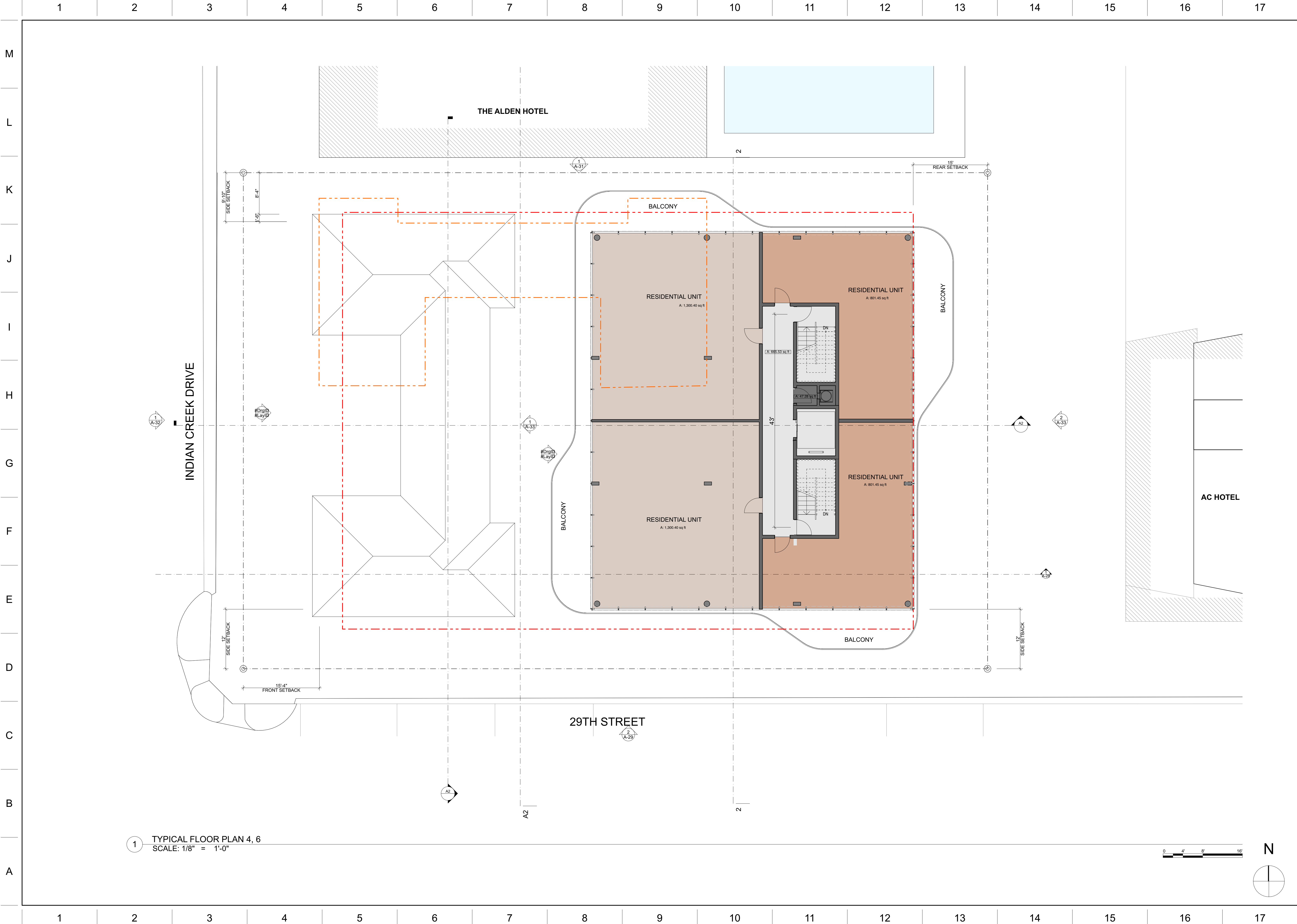
2002
PROJECT NO.

8/2/24
DATE

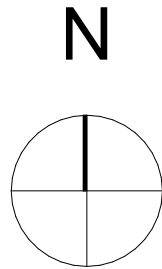
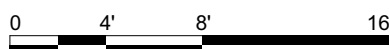
SV / JJ / AB
DRAWN / CHECKED

TYPICAL FLOOR 3,
5, 7

A-37



1 TYPICAL FLOOR PLAN 4, 6
SCALE: 1/8" = 1'-0"



ARCHITECT:

URBAN ROBOT LLC
420 LINCOLN ROAD, S. 406
MIAMI BEACH, FL 33139
(786) 246-4857
(786) 768-2537, F

STRUCTURAL ENGINEER:

M.E.P. ENGINEERS:

CIVIL ENGINEERS:

GENERAL CONTRACTOR:

29 INDIAN CREEK
2911 INDIAN CREEK DRIVE :: MIAMI BEACH, FL 33139

SEAL

URBAN ROBOT LLC
AA26002760 RB26001534 LC26000510

REVISIONS

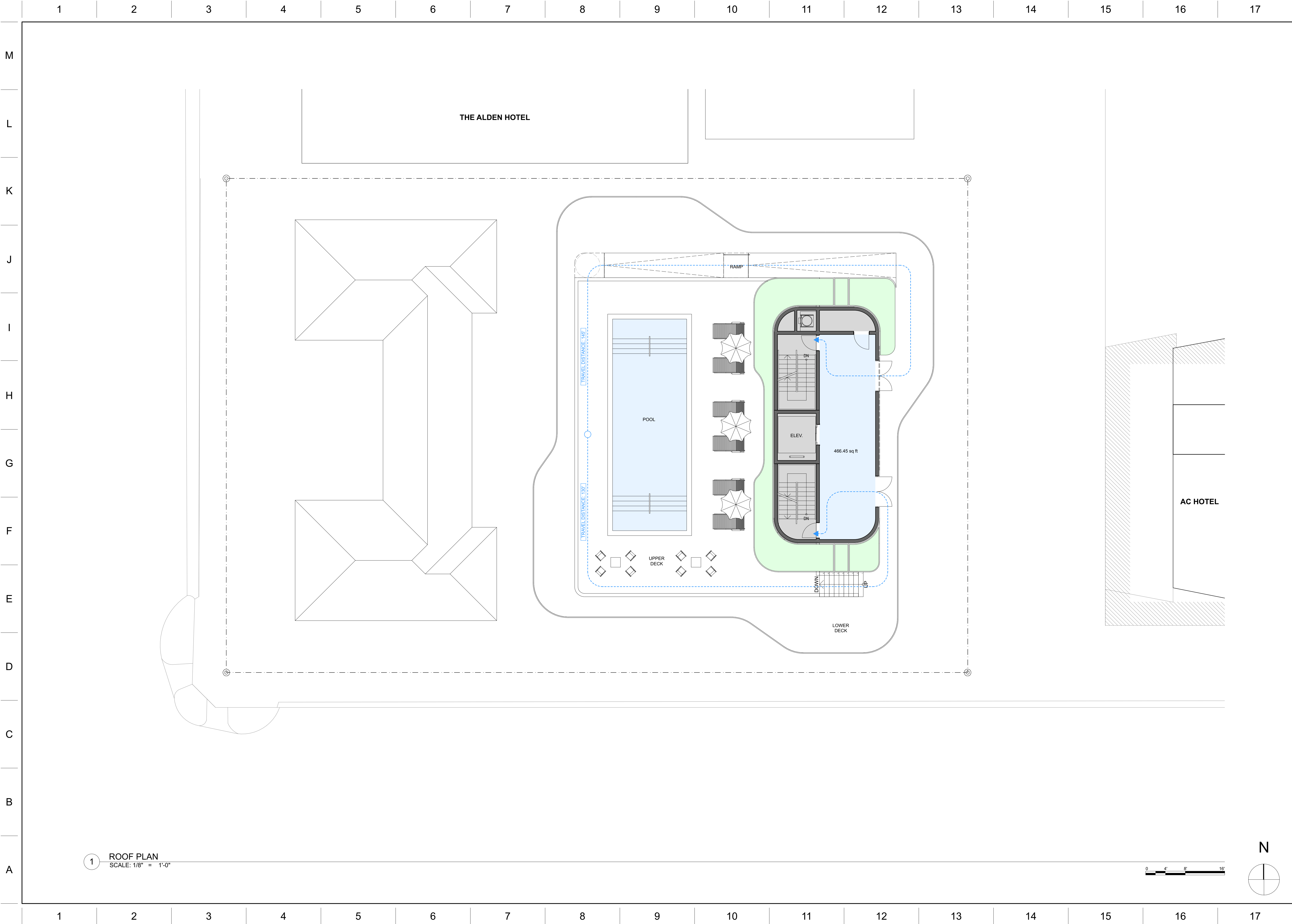
2002
PROJECT NO.

8/2/24
DATE

SV / JJ / AB
DRAWN / CHECKED

TYPICAL FLOOR 4,
6

A-38



ARCHITECT:

URBAN ROBOT LLC
4230 LINCOLN ROAD, S. 406
MIAMI BEACH, FL 33139
(786) 246-4857
(786) 768-2537, F

STRUCTURAL ENGINEER:

M.E.P. ENGINEERS:

CIVIL ENGINEERS:

GENERAL CONTRACTOR:

29 INDIAN CREEK

2911 INDIAN CREEK DRIVE :: MIAMI BEACH, FL 33139

SEAL

URBAN ROBOT LLC
AA268002760 RB268001534 LC268000510

REVISIONS

2002

PROJECT NO.

8/2/24

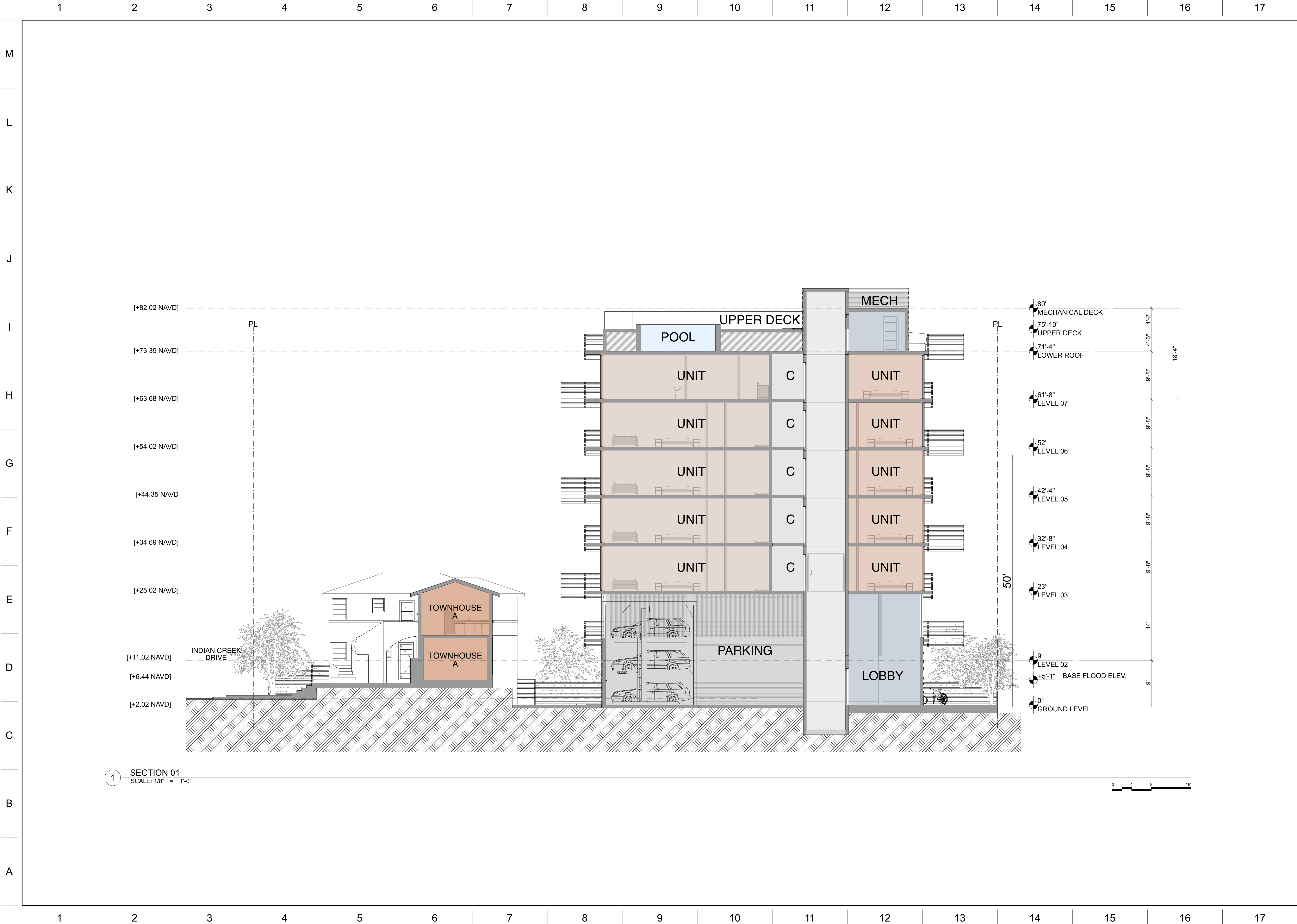
DATE

SV / JJ / AB

DRAWN / CHECKED

ROOF PLAN

A-39



ARCHITECT:

URBAN ROBOT LLC
420 LINCOLN ROAD, S. 406
MIAMI BEACH, FL 33139
(786) 246-4857
(786) 768-2537, F

STRUCTURAL ENGINEER:

M.E.P. ENGINEERS:

CIVIL ENGINEERS:

GENERAL CONTRACTOR:

29 INDIAN CREEK
2911 INDIAN CREEK DRIVE :: MIAMI BEACH, FL 33139

SEAL

URBAN ROBOT LLC
A208002760 B26001534 LC26000510

REVISIONS

2002
PROJECT NO.

8/2/24
DATE

SV / JJ / AB
DRAWN / CHECKED

SECTION 01

A-40



ARCHITECT:

URBAN ROBOT LLC
420 LINCOLN ROAD, S. 406
MIAMI BEACH, FL 33139
(786) 246-4857
(786) 768-2537, F

STRUCTURAL ENGINEER:

M.E.P. ENGINEERS:

CIVIL ENGINEERS:

GENERAL CONTRACTOR:

29 INDIAN CREEK

2911 INDIAN CREEK DRIVE :: MIAMI BEACH, FL 33139

SEAL

URBAN ROBOT LLC
A426002760 B26001534 LC26000510

REVISIONS

2002

PROJECT NO.

8/2/24

DATE

SV / JJ / AB

DRAWN / CHECKED

RENDERING



ARCHITECT:

URBAN ROBOT LLC
420 LINCOLN ROAD, S. 406
MIAMI BEACH, FL 33139
(786) 246-4857
(786) 768-2537, F

STRUCTURAL ENGINEER:

M.E.P. ENGINEERS:

CIVIL ENGINEERS:

GENERAL CONTRACTOR:

29 INDIAN CREEK

2911 INDIAN CREEK DRIVE :: MIAMI BEACH, FL 33139

SEAL

URBAN ROBOT LLC
A426002760 B26001534 LC26000510

REVISIONS

2002

PROJECT NO.

8/2/24

DATE

SV / JJ / AB

DRAWN / CHECKED

RENDERING

