

An aerial, black and white photograph of Miami Beach, Florida. The image shows a dense urban landscape with numerous high-rise buildings, including a prominent curved skyscraper on the left. The city extends to the ocean, where a wide beach and waves are visible. The sky is filled with dramatic, cloudy patterns.

HOUSE OF KIRSCHNER

MIAMI BEACH, FLORIDA

NVID | NOMADAS™

PROPOSAL FOR 4410 ALTON RD PROJECT

Nominated ▼

MCHAP

Mies
Crown Hall
Americas
Prize 16/17

"ON" PRIZE
OSCAR NIEMEYER AWARD

BIAU
Iberoamerican Biennale
of Architecture and Urbanism



Winner ▼

XIVBA13

Bienal
Internacional de
Arquitectura
de Buenos Aires

- Young Generation Award -



- Honorable Mention for the Guaparo House -

VIIIBASC
INTERNATIONAL ARCHITECTURE BIENNALE OF SANTA CRUZ 2020

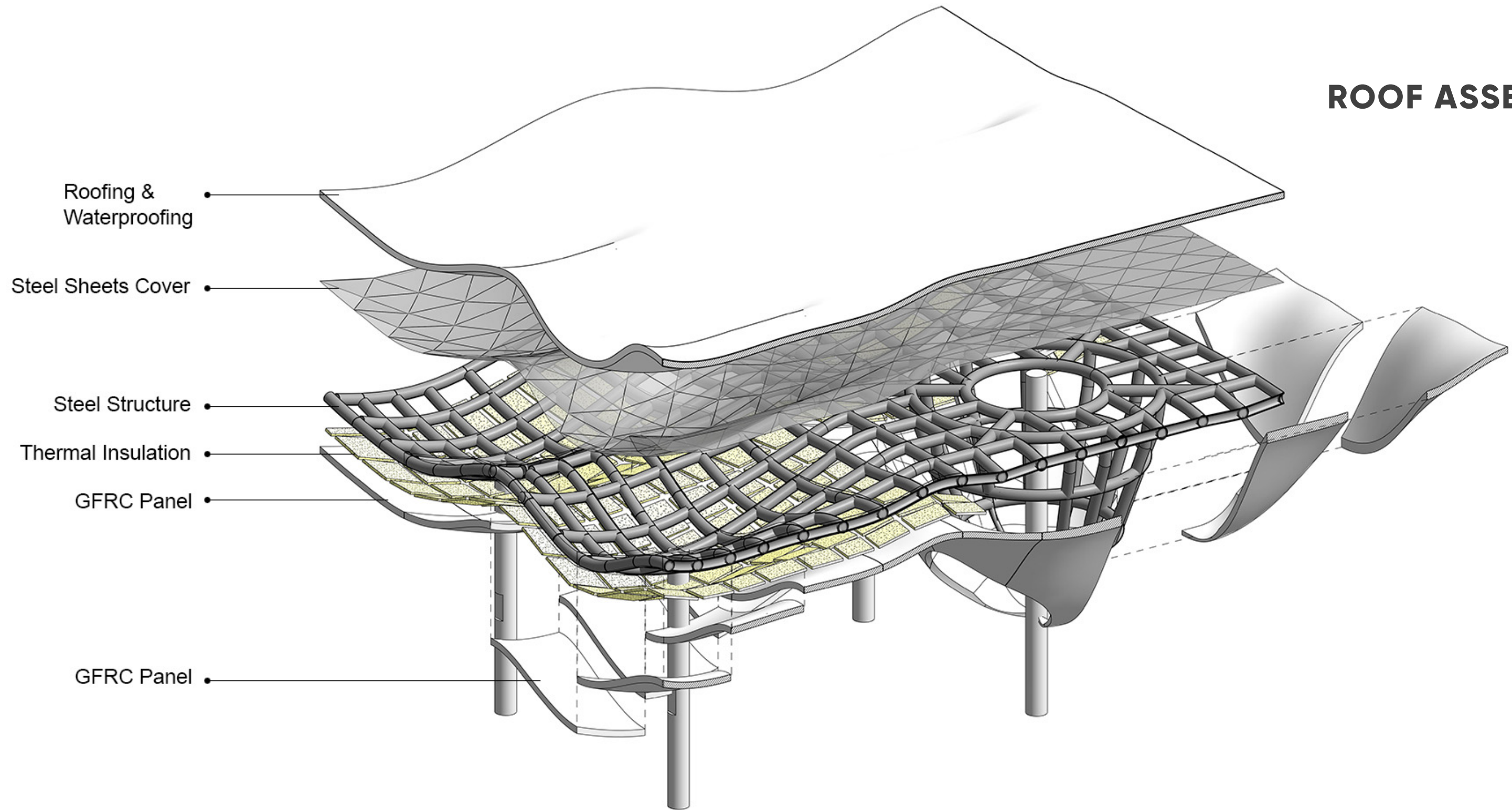
- Honorable Mention for the Guaparo House -

Invited ▼

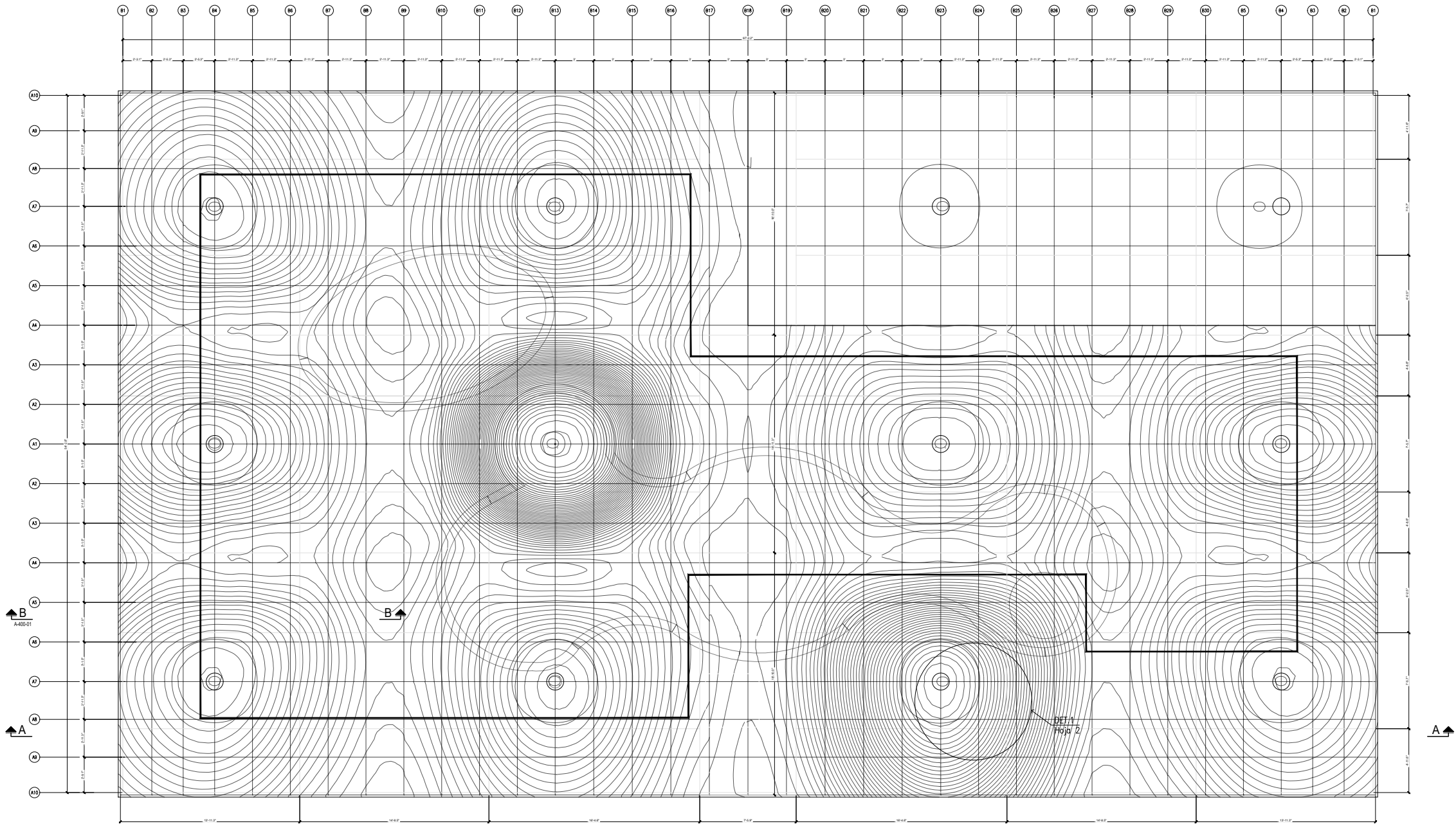


ROOF PROPOSAL

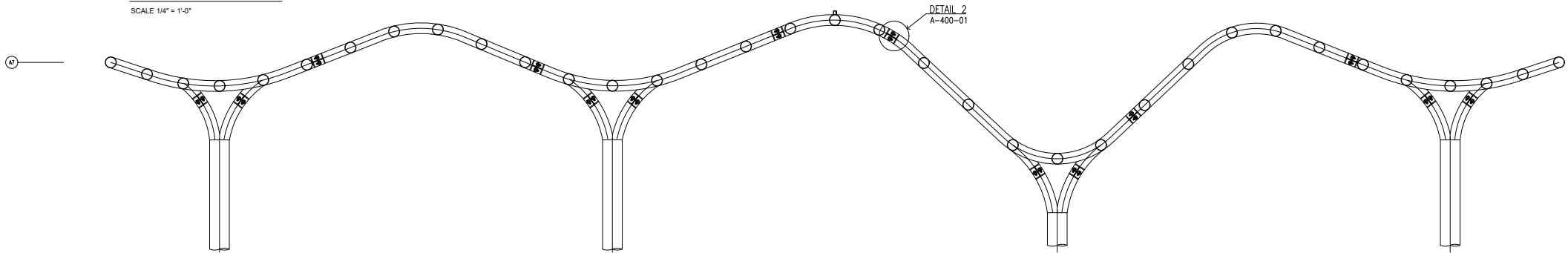
ROOF ASSEMBLY



SCHEMATIC ROOF
FRAMING



METAL FRAMING PLANT
SCALE 1/4" = 1'-0"

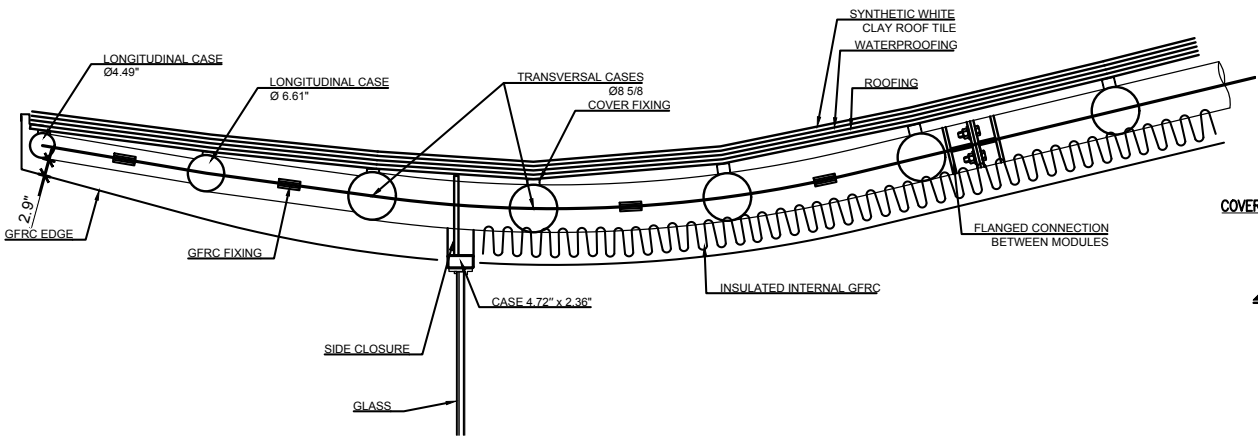


SECTION A-A
SCALE 1/4" = 1'-0"

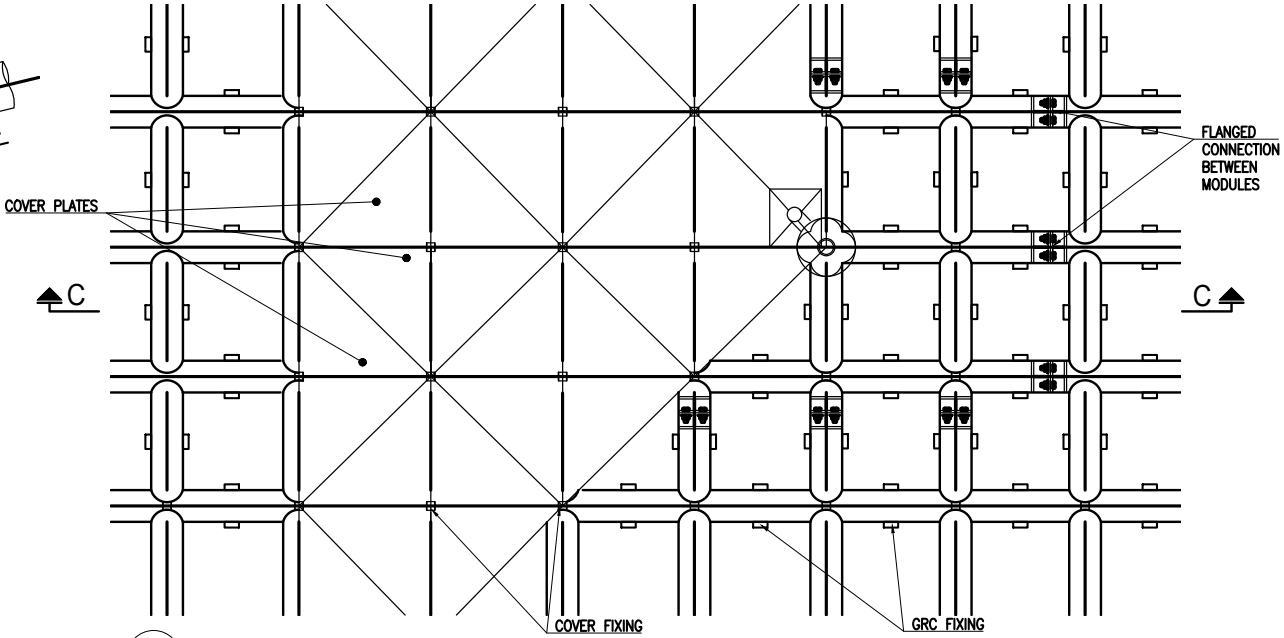


NORTH

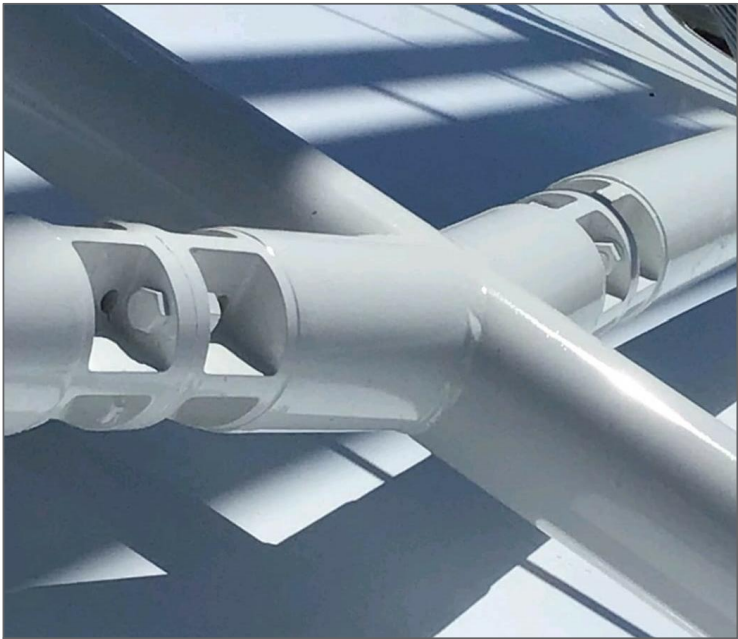
SCHEMATIC ROOF ASSEMBLY



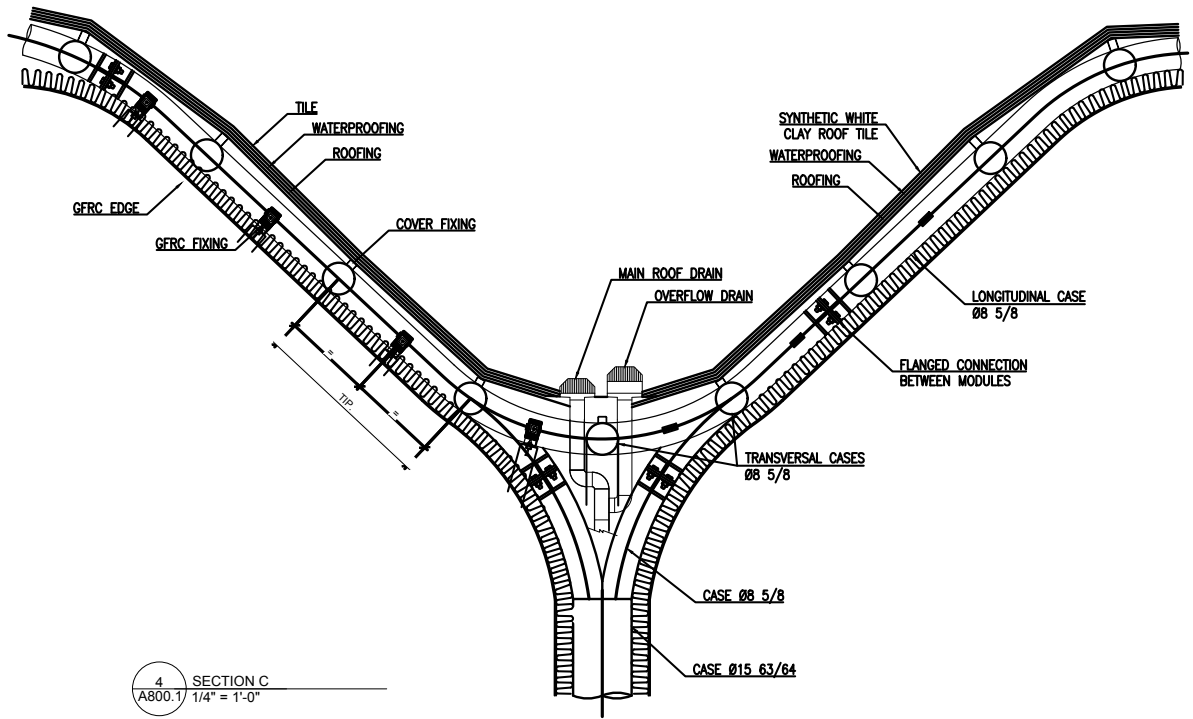
1 SECTION B
A800.1 3/8" = 1'-0"



3 DETAIL 1
A800.1 1/4" = 1'-0"



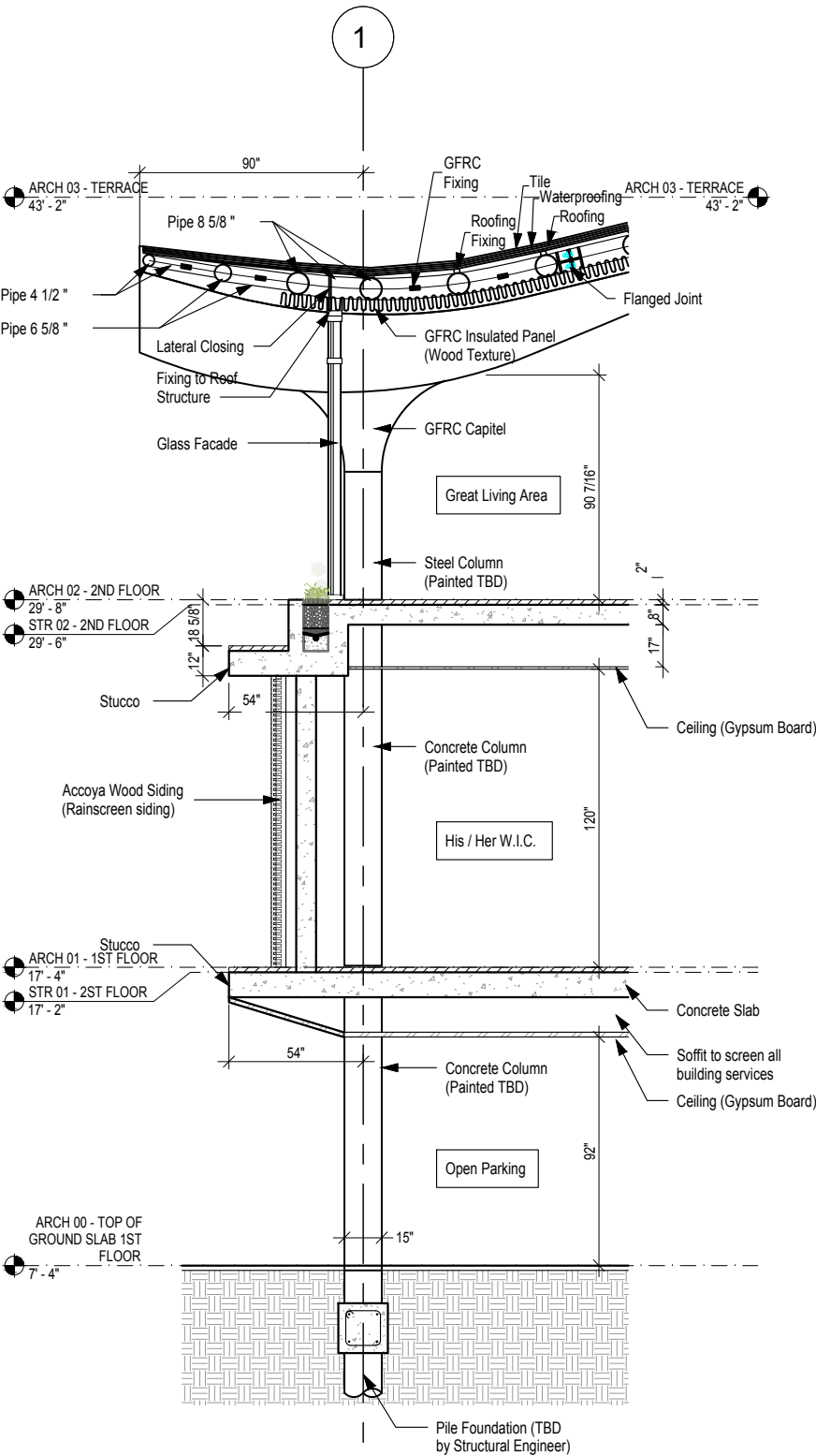
2 DETAIL 2 - FLANGED JOINT
A800.1



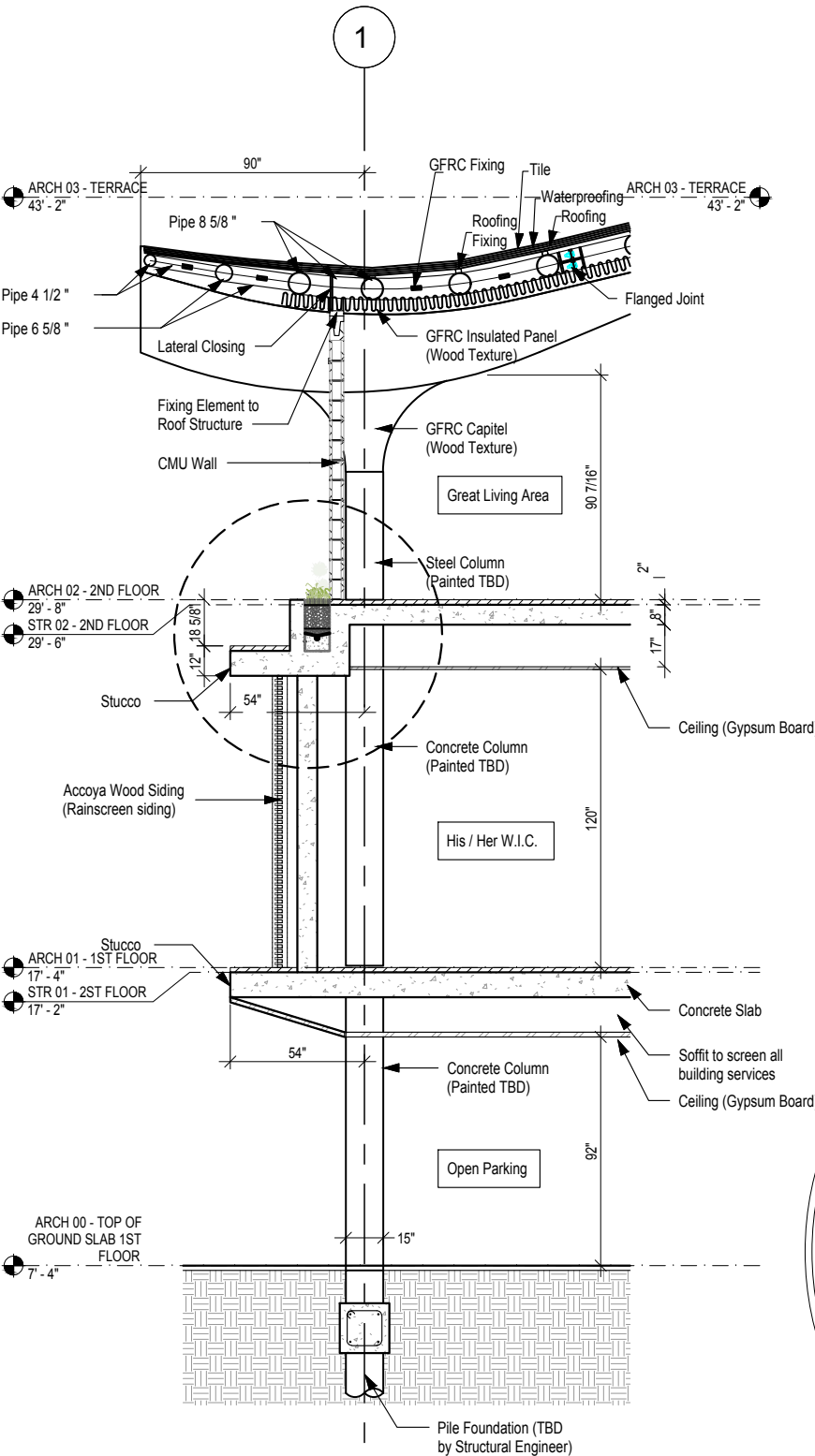
4 SECTION C
A800.1 1/4" = 1'-0"

GENERAL NOTES:
- PROJECT CONSTRUCTION DETAILS ARE BASED ON
GENERIC PRODUCT AND MATERIAL SELECTIONS TO
MEET GENERAL COMPLIANCE WITH THE DESIGN
CONCEPT OF THE PROJECT. THE CONTRACTOR IS
RESPONSIBLE FOR ADDITIONAL FABRICATION
AND/OR DETAILED INSTALLATION INFORMATION OF
SPECIFIC MANUFACTURER'S PRODUCTS AND
MATERIALS AND SATISFACTORY PERFORMANCE OF
THE RELATED WORK.

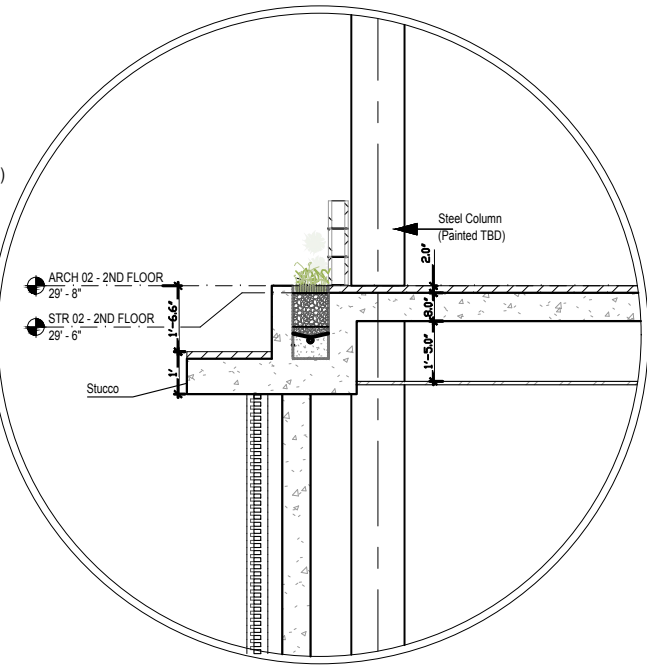
TYPICAL WALL SECTIONS



1 TYP. SECTION - CURTAIN WALL
3/16" = 1'-0"



2 TYP. SECTION - CMU WALL
3/16" = 1'-0"



3 DETAIL - PLANTER DRAIN
1/4" = 1'-0"

SIMILAR PROJECTS

REFERENCE IMAGES OF ANALOGOUS PROJECTS

Sample Project: Heydar Aliyev Center

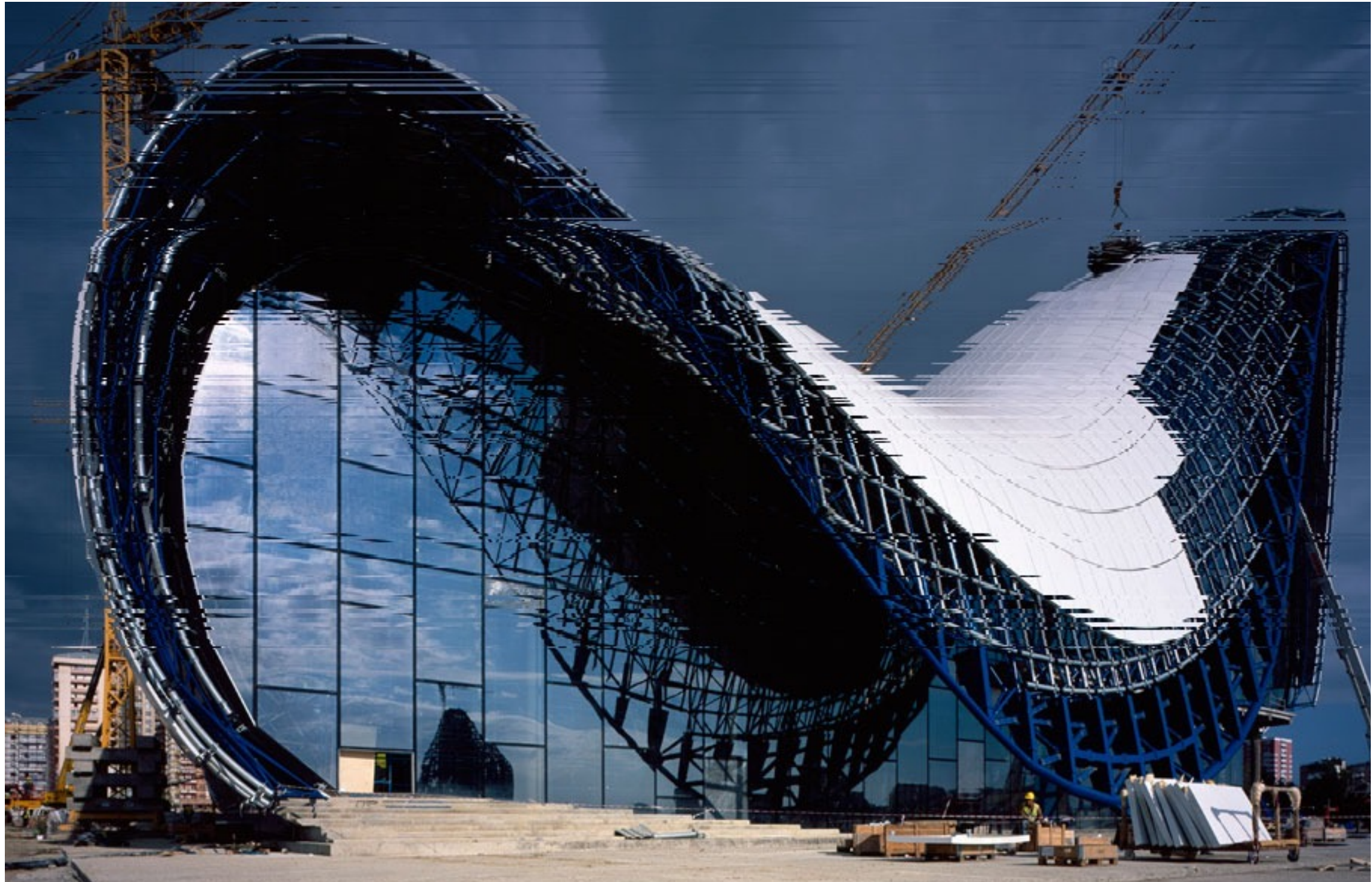


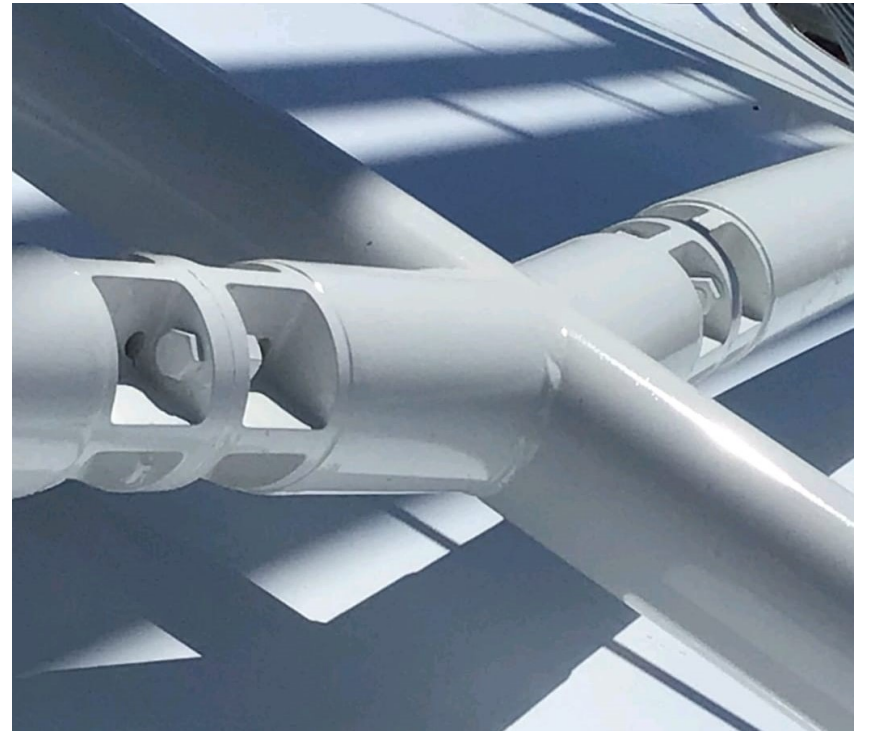
- **Project Name:** Heydar Aliyev Center
- **Designed by:** architect Zaha Hadid
- **Location:** Baku, Azerbaijan
- **Construction system:** Structure with a space frame made of steel, and with Glass Fiber Reinforced Concrete (GFRC) on the interior and exterior, as well as Glass Fiber Reinforced Polyester (GFRP).



HOUSE OF KIRSCHNER

REFERENCE PROJECT





HOUSE OF KIRSCHNER



HOUSE OF KIRSCHNER





HOUSE OF KIRSCHNER



HOUSE OF KIRSCHNER

