

**COMMISSION MEMORANDUM**

TO: Honorable Mayor and Members of the City Commission

FROM: Rickelle Williams, Interim City Manager

DATE: June 26, 2024

TITLE: DUAL REFERRALS TO THE PUBLIC SAFETY AND NEIGHBORHOOD QUALITY OF LIFE COMMITTEE AND TO THE FINANCE AND ECONOMIC RESILIENCY COMMITTEE TO DISCUSS NEXT STEPS AND FUNDING FOR THE PINE TREE DRIVE AND 46 STREET TRAFFIC CIRCLE PROJECT.

**RECOMMENDATION**

The Administration recommends that the Mayor and City Commission approve the dual referrals to the Public Safety and Neighborhood Quality of Life Committee (PSNQLC) and to the Finance and Economic Resiliency Committee (FERC) to discuss next steps and funding for the Pine Tree Drive and 46 Street Traffic Circle project.

**BACKGROUND/HISTORY**

On October 14, 2020, the Mayor and City Commission adopted Resolution No. 2020-31464, approving a Joint Participation Agreement (JPA) between the City of Miami Beach (City) and Miami-Dade County (County), for geometric improvements on Pine Tree Drive between 45th and 47th Street, including a new traffic circle on Pine Tree Drive / Sheridan Avenue and 46th Street. The JPA was necessary to allow the City to perform the improvements, while sharing the cost with the County, as Pine Tree Drive is a County-owned road. The total project cost was estimated to be \$1.1 million and the County's contribution was in the amount of \$500,000.

On April 9, 2021, the JPA between the City and the County was fully executed.

On May 25, 2021, the City retained Kimley Horn & Associates, Inc. (Consultant) to provide professional engineering consulting services to design a traffic circle located at the intersection of Pine Tree Drive and 46 Street (Project), as part of a traffic calming strategy. The Consultant developed a concept for a multi-lane traffic circle, reducing traffic conflicts while maintaining projected traffic flows.

On September 9, 2021 City staff met with neighboring residents directly impacted by the Project and presented them with the 60% design plans based on the multi-lane, single traffic circle (Exhibit A).

**ANALYSIS**

By October 11, 2021, four (4) of the adjacent residents voiced opposition to the proposed multi-lane design. They had concerns about the large footprint of the traffic circle, potential increased traffic, and confusion for motorists transitioning within a multi-lane traffic circle. Based on the stakeholder's concerns, the design was paused while the consultant evaluated the input and conducted further analysis. The Consultant advised that the layout could be modified to address

the concerns raised by residents by developing a single lane traffic circle geometry, even though the multi-lane design complies with traffic engineering standards and best practices.

On March 14, 2022, a meeting was held at the project site with the impacted residents and representatives from the Mayor's Office, the City Manager's Office, and other City departments including Marketing and Communications, Transportation and Mobility, Police, and the Office of Capital Improvement Projects (CIP). At that meeting, the stakeholders continued to express concerns about the multi-lane design. The consensus from the residents was that the City needed to proceed with a modification of the existing design from a multi-lane to a single-lane geometry. This modification required a new traffic study which had to be approved by the County.

To accommodate traffic flows and resolve minimum merge distances, the project footprint would need to be expanded and would require a second traffic circle at Pine Tree Drive and 47th Street.

On May 26, 2022, Kimley Horn began the re-evaluation and preliminary design for the single lane, dual traffic circle design.

On July 9, 2022, Kimley Horn submitted the revised layout (Exhibit B) to Miami-Dade County Department of Transportation and Public Works (DTPW) for review. After several review cycles and meetings, DTPW approved the proposed revised layout. The revised design significantly increases the projected cost and resulted in the City staff's request for additional funding from DTPW, since the project scope is within the County's public right-of-way and jurisdiction, and as such, the responsibility for traffic improvements and related costs lie with the County. The total project cost for the dual traffic circle design has been estimated at \$6.5 million.

On May 8, 2023, DTPW advised that the County had identified funding for additional contribution to the project in the amount of \$2,825,000 for a total County contribution of \$3.3 million. The City's current budget appropriation is \$603,603. A budget request has been submitted through the Fiscal Year 2025 Capital Budget process in the amount of \$2,574,883 for a total City contribution of \$3,178,486.

The County advised they are in the process of preparing an amendment to the JPA to include the revised geometry and the \$2,825,000 additional contribution.

The Project's design development has not progressed since the project estimate for the revised geometry far exceeded the appropriated budget. This referral item is being presented to allow the Committees to discuss next steps and determine the City's funding participation, given the County's responsibilities. If funding is finalized, the Consultant will resume design development, and the amendment to the JPA will be finalized.

### **FISCAL IMPACT STATEMENT**

The total project cost for the dual traffic circle design has been estimated at \$6.5 million. The total County contribution is currently \$3.3 million. The City's current budget appropriation is \$603,603. A budget request has been submitted through the Fiscal Year 2025 Capital Budget process in the amount of \$2,574,883 for a potential total City contribution of \$3,178,486.

### **Does this Ordinance require a Business Impact Estimate?**

(FOR ORDINANCES ONLY)

The Business Impact Estimate (BIE) was published on . See BIE at:

<https://www.miamibeachfl.gov/city-hall/city-clerk/meeting-notice/>

### **FINANCIAL INFORMATION**

**CONCLUSION**

The Administration recommends that the Mayor and City Commission approve the dual referrals to the Public Safety and Neighborhood Quality of Life Committee and to the Finance and Economic Resiliency Committee to discuss next steps and funding for the Pine Tree Drive and 46 Street Traffic Circle project.

**Applicable Area**

Middle Beach

**Is this a “Residents Right to Know” item, pursuant to City Code Section 2-17?**

Yes

**Is this item related to a G.O. Bond Project?**

No

**Was this Agenda Item initially requested by a lobbyist which, as defined in Code Sec. 2-481, includes a principal engaged in lobbying?** No

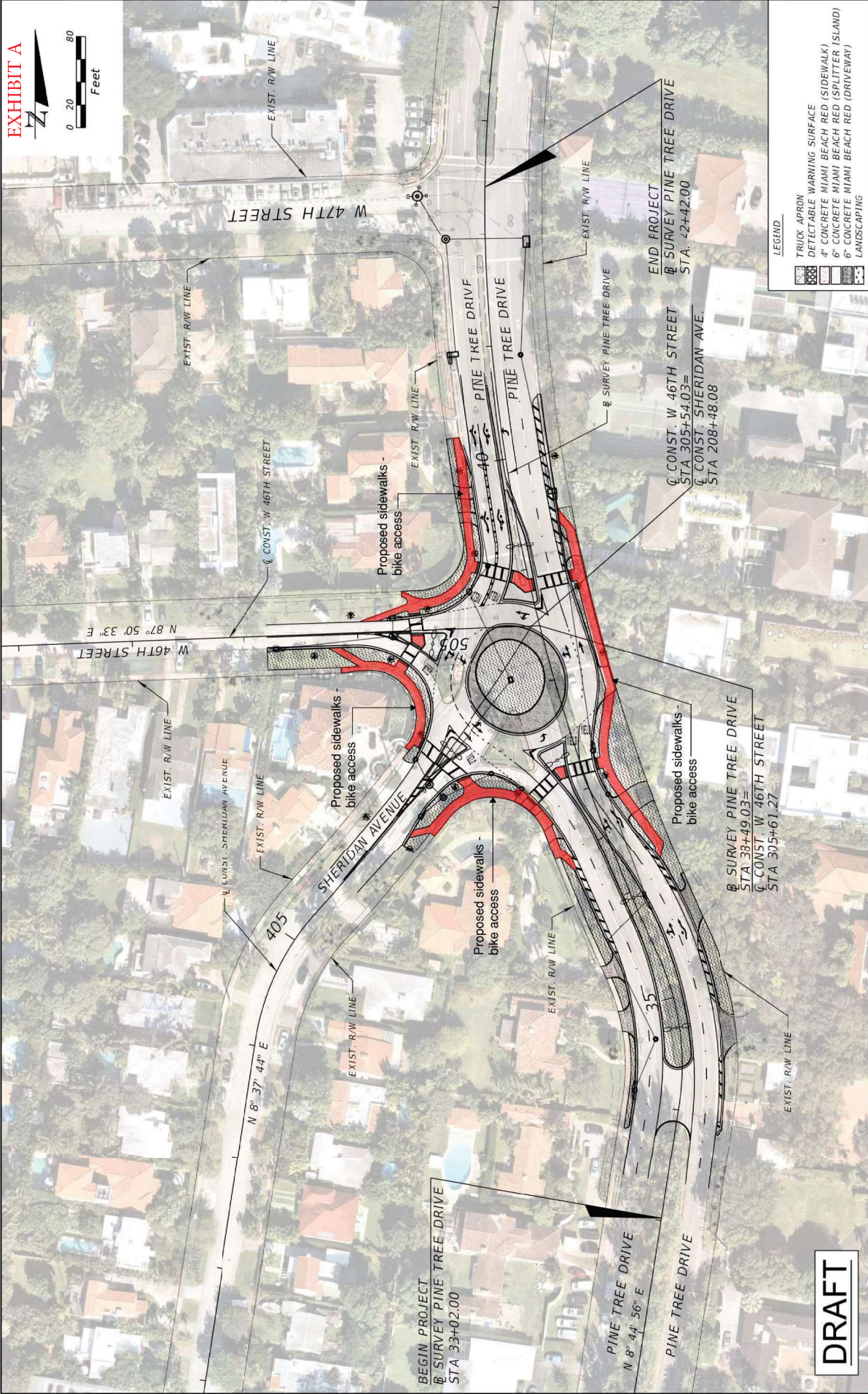
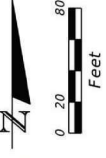
If so, specify the name of lobbyist(s) and principal(s):

**Department**

Capital Improvement Projects

**Sponsor(s)**

**Co-sponsor(s)**

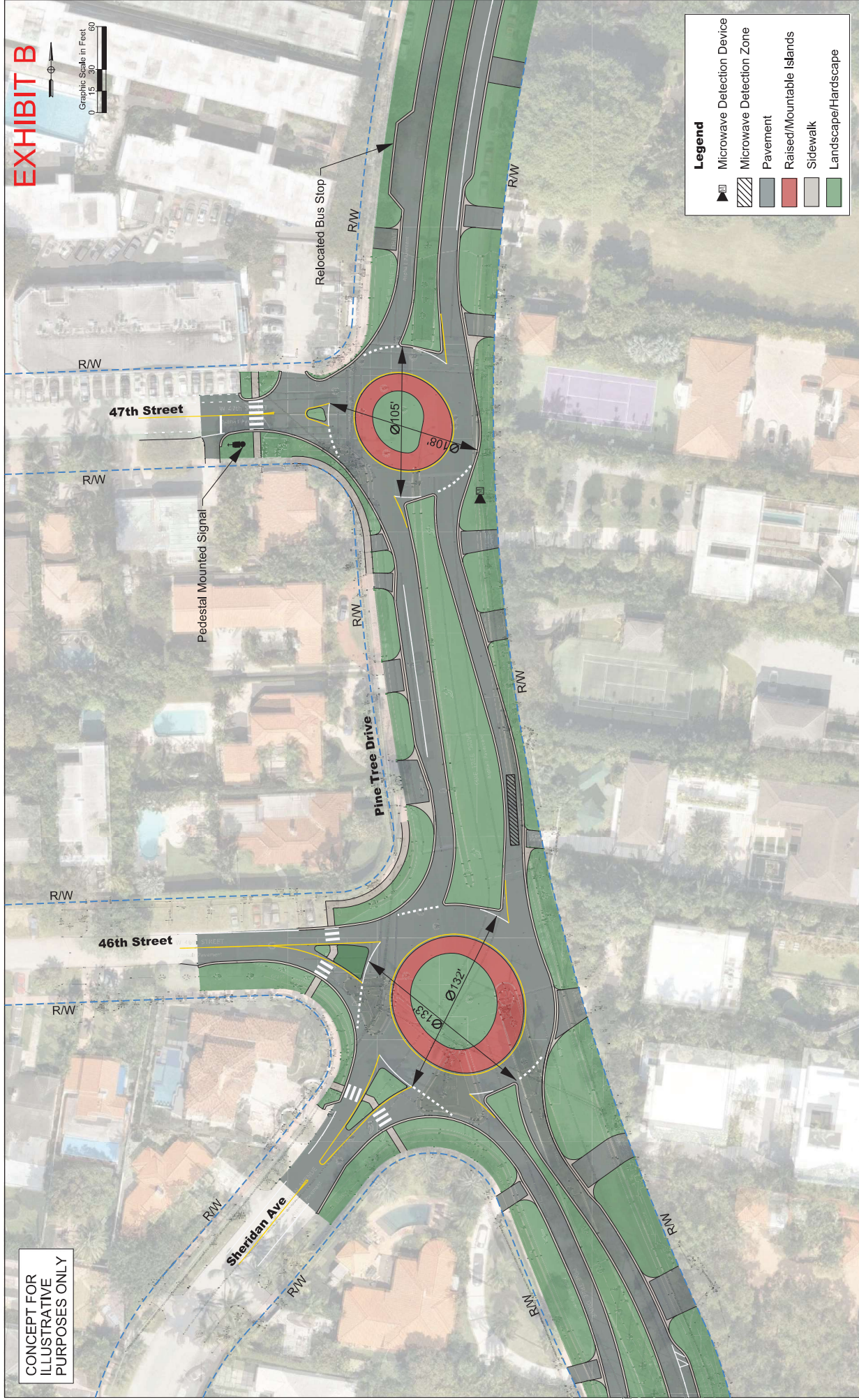


DRAFT

REVISIONS		PROJECT EXHIBIT	
DATE	DESCRIPTION	DATE	DESCRIPTION
Kimley-Horn		MIAMI-DADE COUNTY	
Registry 696 Leonie I. Almonte, P.E. P.E. License No. 70822, 1400 355 Alhambra Circle, Suite 100 8/31/2023 4:24:37 PM Drainage Map		PROJECT PINE TREE DRIVE & 46TH STREET	
8/31/2023 4:24:37 PM Drainage Map		SHEET NO.	
A011Baradia		C:\WORK\IN\073582\EXHIBIT 101 Residents.dgn	

# EXHIBIT B

CONCEPT FOR  
ILLUSTRATIVE  
PURPOSES ONLY



Graphic Scale in Feet  
0 15 30 60

R/W

46th Street

47th Street

Sheridan Ave

Pine Tree Drive

Relocated Bus Stop

Pedestal Mounted Signal

- Legend**
- Microwave Detection Device
  - Microwave Detection Zone
  - Pavement
  - Raised/Mountable Islands
  - Sidewalk
  - Landscape/Hardscape