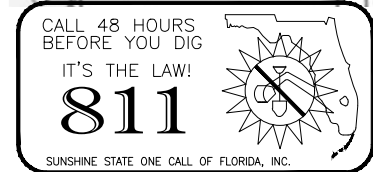


Drawing name: C:\Users\larcdu\Dropbox (Personal)\PROJECTS\124011 Sandbox\Drawings\4011\_DISP.dwg L 1.01 Aug 15, 2024 9:58am by: ardu



PROJECT

SANDBOX

ADDRESS

1974 MARSEILLE DRIVE  
MIAMI BEACH, FLORIDA 33141

DRAWING

TREE DISPOSITION

- TREE/PALM TO REMAIN
- TREE/PALM TO BE REMOVED



SHEET NO.

L 1.01

DATE

AUG 16, 2024

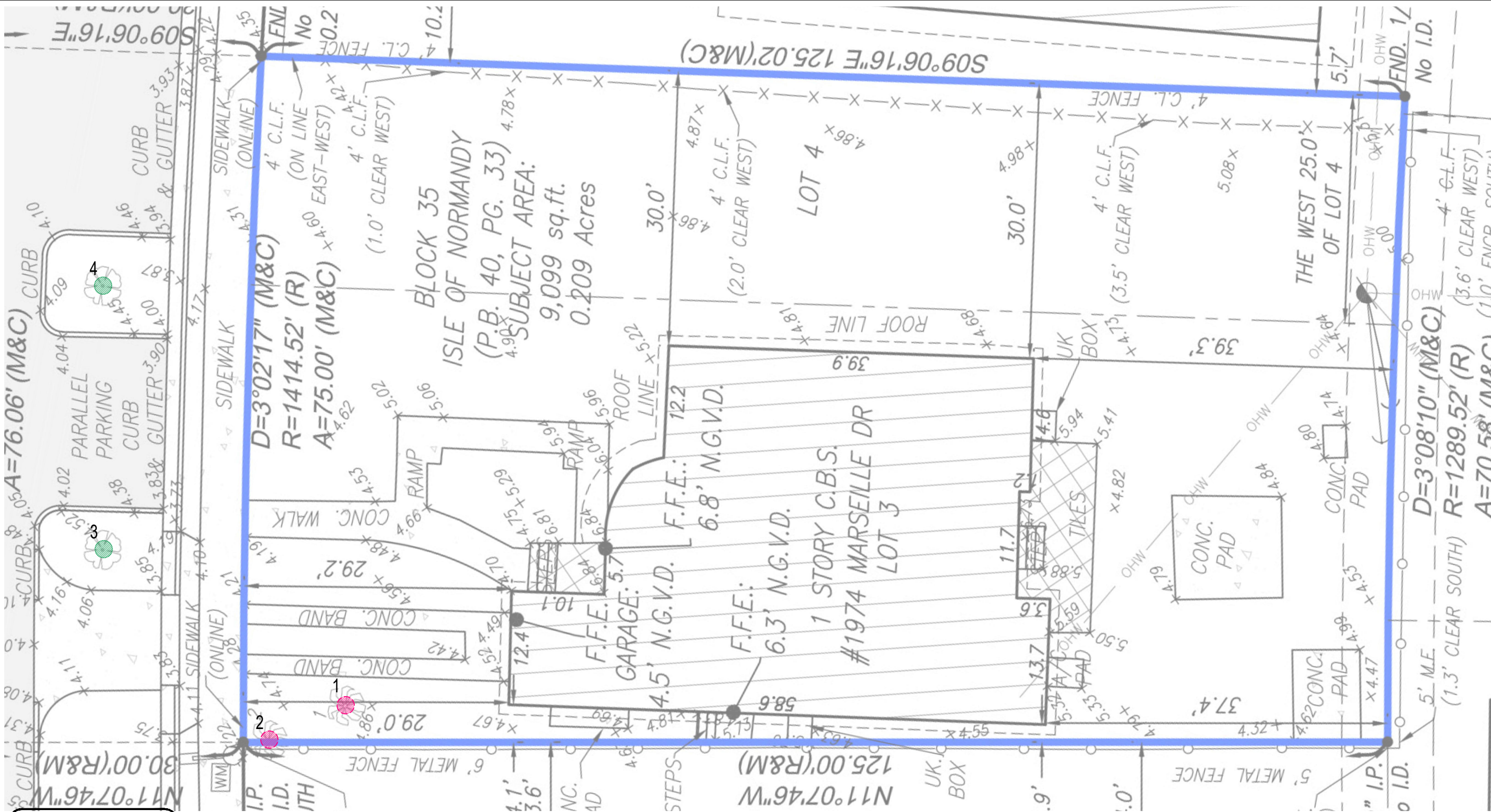
REVISIONS



DULAND  
DESIGN  
land planners  
landscape architects



LA 6666948



TREE DISPOSITION TABLE

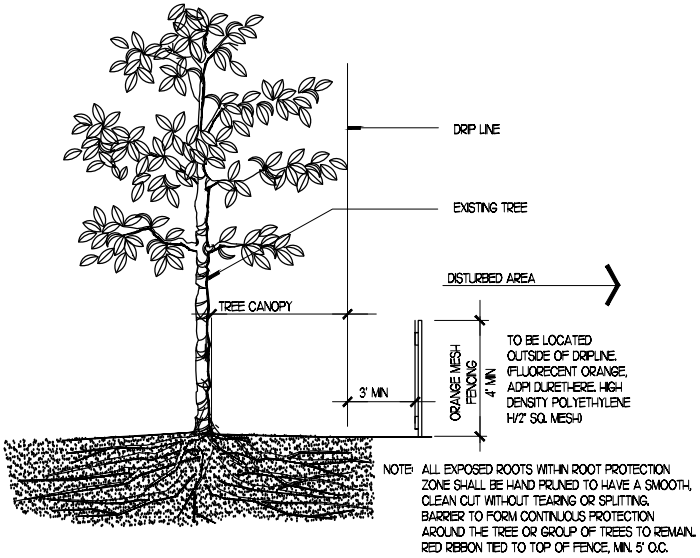
NO.	BOTANICAL NAME	COMMON NAME	DISPOSITION	CONDITION/ REMARKS	DBH (in)	HEIGHT(ft)	SPREAD.ft)	REMOVAL/MITIGATION	
								PALM (1:1)	DBH
1	SABAL PALMETTO	SABAL PALM	REMOVE	FAIR	14	8	5	1	
2	SABAL PALMETTO	SABAL PALM	REMOVE	FAIR	14	10	5	1	
3	QUERCUS VIRGINIANA	LIVE OAK	REMAIN	FAIR	8	12	16		
2	QUERCUS VIRGINIANA	LIVE OAK	REMAIN	FAIR	8	12	20		

	REMAIN	REMOVE	TOTAL TREES	TOTAL PALMS
TREES	2	0	2	
PALMS	0	2		2
TOTAL PALMS TO BE REMOVED		2		
TOTAL TREES TO BE REMOVED IN DBH		0		
ESTIMATED REPLACEMENT REQUIREMENTS FOR PALMS @ 1:1		2		
ESTIMATED REPLACEMENT REQUIREMENTS FOR TREES		0		
TOTAL PROPOSED REPLACEMENT PALMS		2		

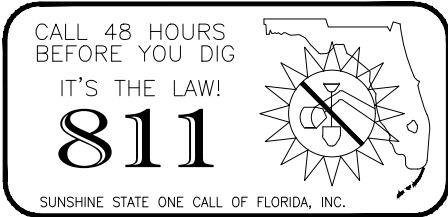
TREE DISPOSITION NOTES

- TREE DISPOSITION PLAN IS BASED ON ALL AVAILABLE INFORMATION. CONTRACTOR TO REPORT ALL DISCREPANCIES TO LANDSCAPE ARCHITECT FOR REVIEW PRIOR TO CONSTRUCTION/DEMOLITION.
- ALL PITS TO BE FILLED THE SAME DAY OF REMOVAL OF TREES AND/OR PALMS. RESTORE SURFACE WITH SOD OR MULCH TO MATCH EXISTING CONDITIONS.
- CONTRACTOR SHALL VERIFY ALL EXISTING ABOVE AND UNDERGROUND UTILITIES 48 HOURS PRIOR TO ANY ON-SITE EXCAVATION.
- TREE SURVEY DATED 02/09/2024, PROVIDED BY: J. HERNANDEZ & ASSOCIATES INC.

3300 NW 112TH AVE, SUITE 10  
DORAL, FL 33172  
PHONE: 305 526 0606



**1** EXISTING TREE PROTECTION  
 SECTION  
 D-1006.DWG  
 SCALE: N.T.S.





PROJECT

## SANDBOX

ADDRESS

1974 MARSEILLE DRIVE  
MIAMI BEACH, FLORIDA 33141

## DRAWING

## TREE & PALM PLANTING PLAN

SHEET NO.

L 2.01

DATE

SEPT 5, 2024

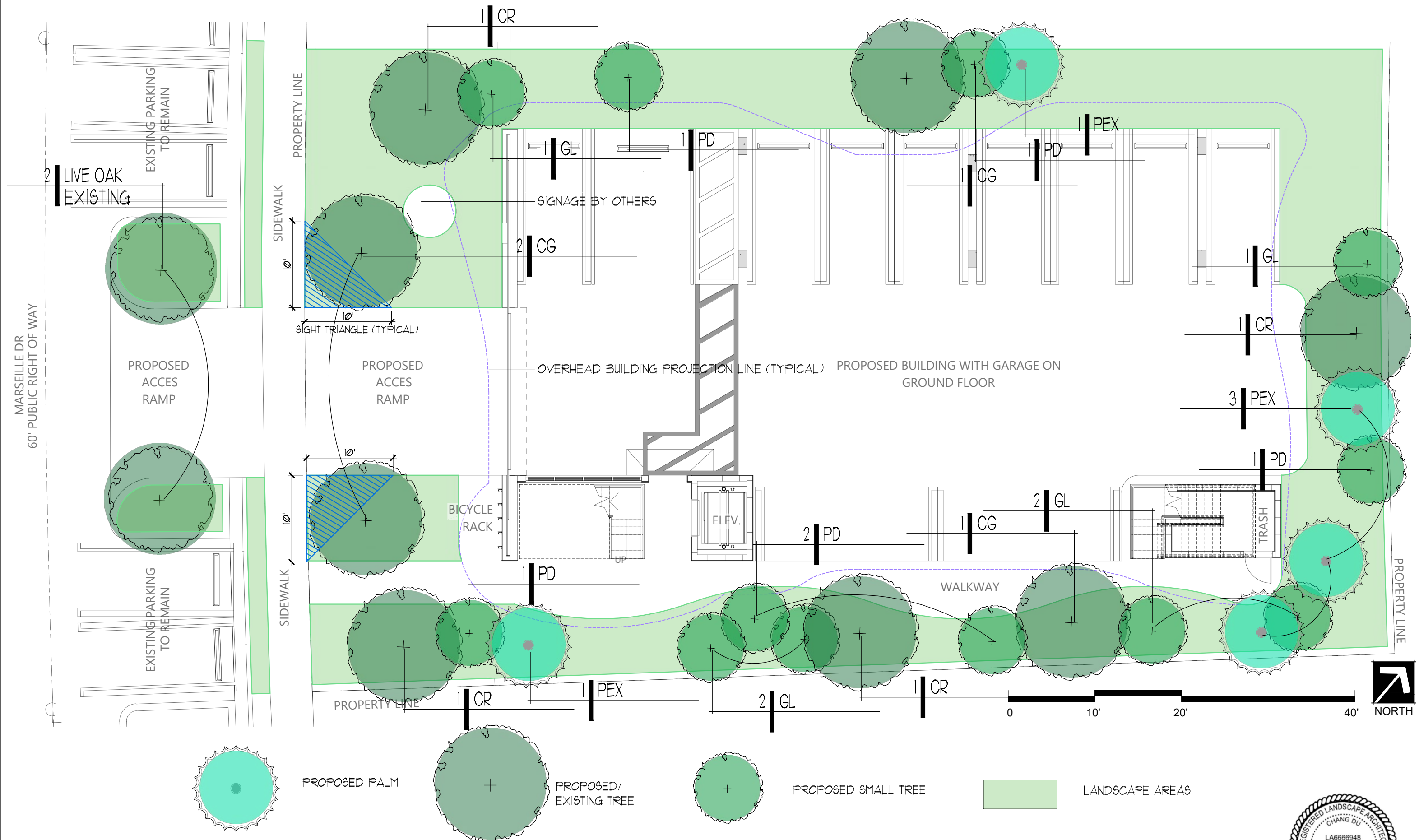
REVISIONS

DULAND  
DESIGN

land planners  
landscape architects



LA 6666948



Drawing name: C:\Users\arodu\Dropbox (Personal)\PROJECTS\124011 Sandbox\Drawings\4011\_PLNT.dwg L 2.02 Sep 05, 2024 2:05pm by: arodu

PROJECT

SANDBOX

ADDRESS

1974 MARSEILLE DRIVE  
MIAMI BEACH, FLORIDA 33141

DRAWING

UNDERSTORY PLANTING PLAN

SHEET NO.

L 2.02

DATE

SEPT 5, 2024

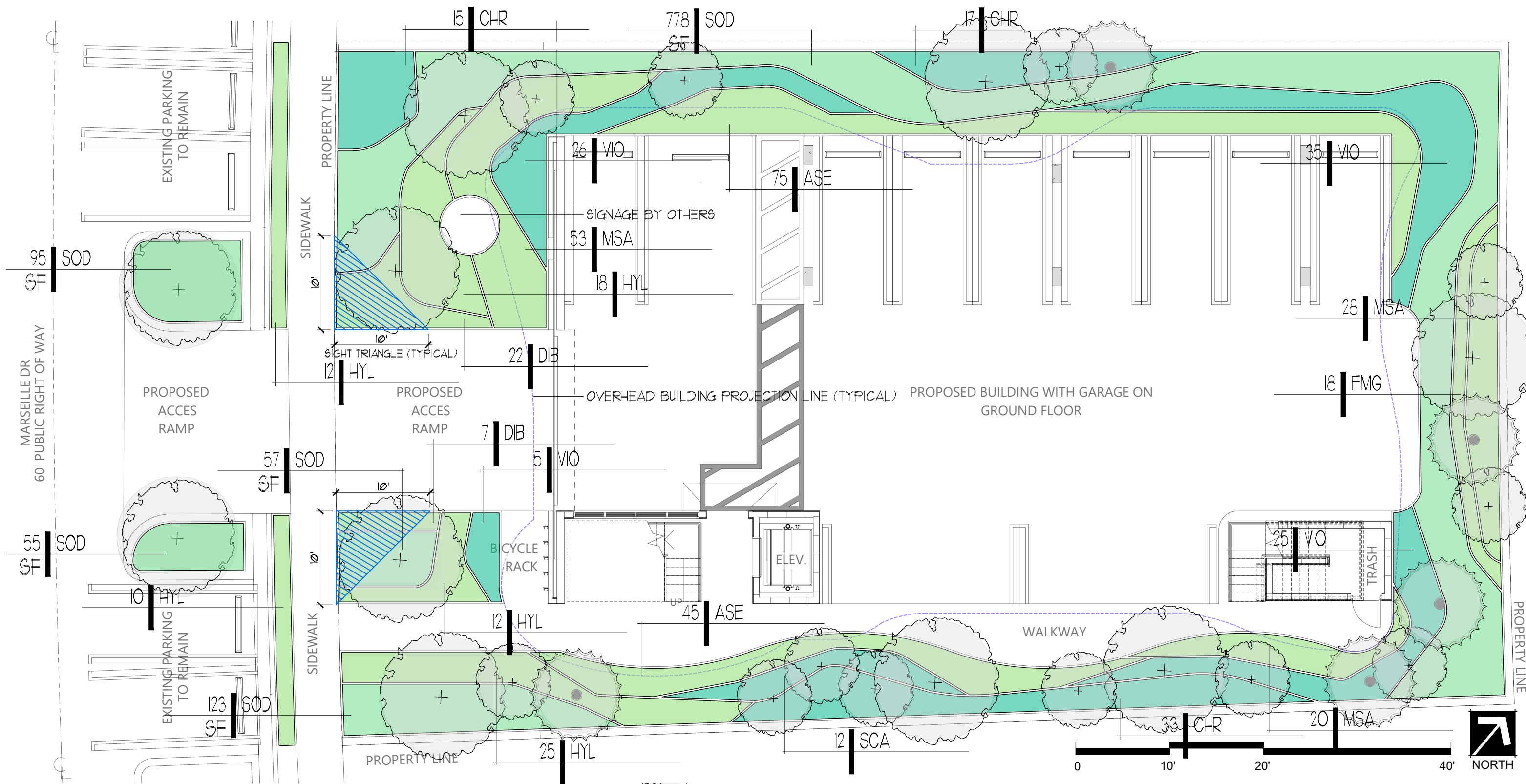
REVISIONS



DULAND  
DESIGN  
land planners  
landscape architects



8766948 VT





TREE AND PALM PALETTE



CG  
BRIDALVEIL TREE CAESALPINIA GRANADILLO



CR  
AUTOGRAPH TREE CLUSIA ROSIA



GL  
CRABWOOD GYMNANTHES LUCIDA



PD  
ALLSPICE PIMENTA DIOICA



PEX  
SOLITAIRE PALM PTYCHOSPERMA ELEGANS

SHURB AND GROUNDCOVER PALETTE



ASE  
CAST-IRON PLANT ASPIDISTRA ELATIOR



CHR  
RED TIP COCOPLUM CHRYSOBALANUS ICACO "RED TIP"



SCA  
GREEN SCHEFFLERA SCHEFFLERA ARBORICOLA



VIO  
WALTER'S VIBURNUM VIBURNUM OBOVATUM



GL  
CRABWOOD GYMNANTHES LUCIDA



PD  
ALLSPICE PIMENTA DIOICA



PEX  
SOLITAIRE PALM PTYCHOSPERMA ELEGANS



HYL  
SPIDER LILY HYMENOCALLIS LATIFOLIA



DIB  
AFRICAN IRIS DIETES BICOLOR



FMG  
GREEN ISLAND FICUS FICUS MICROCARPA 'GREEN ISLAND'



ZAZ  
ZZ PLANT ZAMIOCULCAS ZAMIIFOLIA

PLANTING SCHEDULE

Plants installed pursuant to this Code shall conform to, or exceed, the minimum standards for Florida Number One as provided in the most current edition of "Grades and Standards for Nursery Plants, Part I and II," prepared by the State of Florida Department of Agriculture and Consumer Services.					
All landscape planting ares shall be irrigated by 100% coverage automatic sprinkler system designed and constructed in accordance with the City of Miami Beach Code of Ordinances.					
QUANTITY	SYMBOL	BOTANICAL NAME	COMMON NAME	NATIVE	SPECIFICATIONS
TREES					
4	CG	CAESALPINIA GRANADILLO	BRIDALVEIL TREE	NO	65GAL/14' PLANTED HT. MIN./ 6' SP/3" CAL./ SINGLE TRUNK/ CLEAR TRUNK 4'/ AS SHOWN
4	CR	CLUSIA ROSIA	AUTOGRAPH TREE	YES	65 GAL/12" HT./ 5' SP./3" CAL./SINGLE TRUNK/ CLEAR TRUNK 4'/AS SHOWN
SMALL TREES					
6	GL	GYMNANTHES LUCIDA	CRABWOOD	YES	45 GAL/10' PLANTED HT. MIN./ 5' SP.
6	PD	PIMENTA DIOICA	ALLSPICE	NO	45 GAL/10' PLANTED HT. MIN./ 5' SP.
PALMS					
5	PEX	PTYCHOSPERMA ELEGANS	SOLITAIRE PALM	NO	MIN. 8' HEIGHT GW/ FG/ TRIPLE TRUNK/ AS SHOWN
SHRUBS					
65	CHR	CHRYSOBALANUS ICACO 'RED TIP'	RED TIP COCOPLUM	YES	24" HT./ FULL TO BASE/ 30" O.C.
12	SCA	SCHEFFLERA ARBORICOLA	GREEN SCHEFFLERA	NO	24" HT./ FULL TO BASE/ 30" O.C.
91	VIO	VIBURNUM OBOVATUM	WALTER'S VIBURNUM	YES	24" HT./ FULL TO BASE/ 30" O.C.
GRASS & GROUNDCOVERS					
120	ASE	ASPIDISTRA ELATIOR	CAST-IRON PLANT	NO	24" O.A./ FULL TO BASE/ 24" O.C.
29	DIB	DIETES BICOLOR	AFRICAN IRIS	NO	18" O.A./ FULL TO BASE/ 24" O.C.
77	HYL	HYMENOCALLIS LATIFOLIA	SPIDERLILY	YES	24" O.A./ FULL TO BASE/ 30" O.C.
8	FMG	FICUS MICROCARPA ' GREEN ISLAND'	GREEN ISLAND FICUS	NO	18" O.A./ FULL TO BASE/ 24" O.C.
101	MSA	MISCANTHUS SINENSIS 'ADAGIO'	ADAGIO GRASS	NO	18" O.A./ FULL TO BASE/ 24" O.C.
MISCELLANEOUS					
1,108	SOD	STENOTAPHRUM SECCUNDATUM	ST AUGUSTINE	YES	STAGGERED PANELS (150 SF IN ROW)



Drawing name: C:\Users\aradu\Dropbox (Personal)\PROJECTS\124011 Sandbox\Drawings\4011\_PLNT.dwg L 3.02 Sep 05, 2024 2:10pm by: aradu

MUNICIPALITY <u>City of Miami Beach</u>		
ZONING CLASS <u>RM-1</u>		
TOTAL SITE (SF/AC)	8,822	0.20
OPEN SPACE	REQUIRED/ ALLOWED	PROVIDED
A. SF of required Open Space	2,647	3,225
Lot Area	8,822	
Multiplier	30%	
LAWN AREA		
A. SF of landscape Open Space	2,647	3,225
B. Maximum Lawn Area (SOD)	1,323	958
Open Space required	2,647	
Multiplier	50%	
LOT TREES		
A. Trees required per lot, less existing trees	6	6
Required trees per acre	28	
Net lot acres	0.203	
Required trees	6	
Existing trees	0	
B. % Palms allowed	-	5
Trees required	6	
Multiplier	0%	
Existing palms	0	
PALMS DO NOT COUNT TOWARDS MIN. TREE REQUIREMENTS		
C. % Native required	2	4
Trees provided	6	
Multiplier	30%	
D. % Drought tolerant and low maintenance species required	3	6
Trees provided	6	
Multiplier	50%	

STREET TREES

A. Street trees (max. average spacing at 20' o.c.)	4	4
LF of street frontage	75	
Multiplier/max. spacing	20	
Existing street trees	2	
NOTE: two of the required street trees have to be planted within property line due to the existing on-street		

SHRUBS

A. Number of shrubs required	120	171
Lot + street trees required	10	
Multiplier	12	
B. % Native required	86	150
Shrubs provided	171	
Multiplier	50%	

SMALL TREES OR LARGE SHRUBS

A. Number of small trees required	12	12
Shrubs required	120	
Multiplier	10%	
B. % Native required	6	6
Small trees provided	12	
Multiplier	50%	

PROJECT

SANDBOX

ADDRESS

1974 MARSEILLE DRIVE  
MIAMI BEACH, FLORIDA 33141

DRAWING

LANDSCAPE LEGEND

SHEET NO.

L 3.02

DATE

SEPT 5, 2024

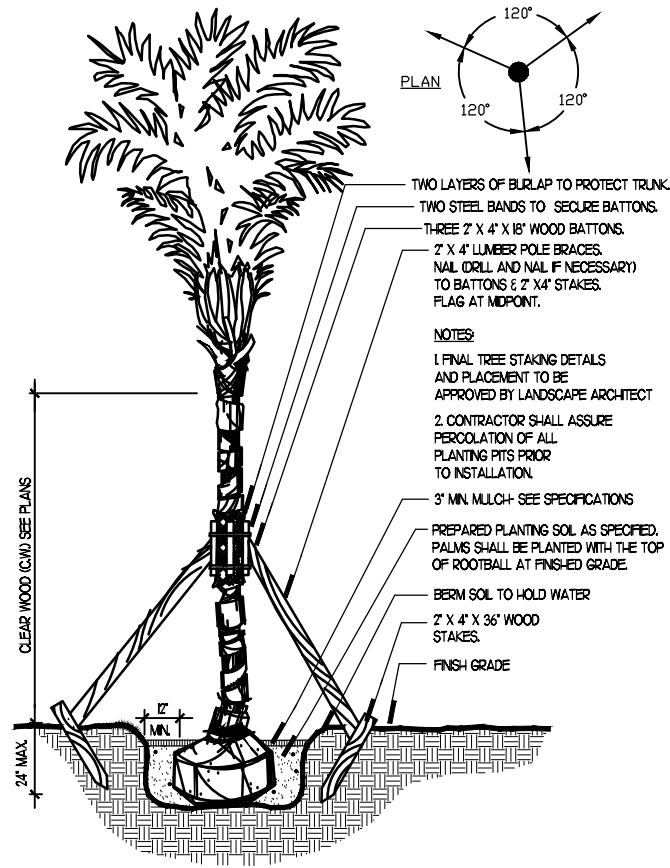
REVISIONS



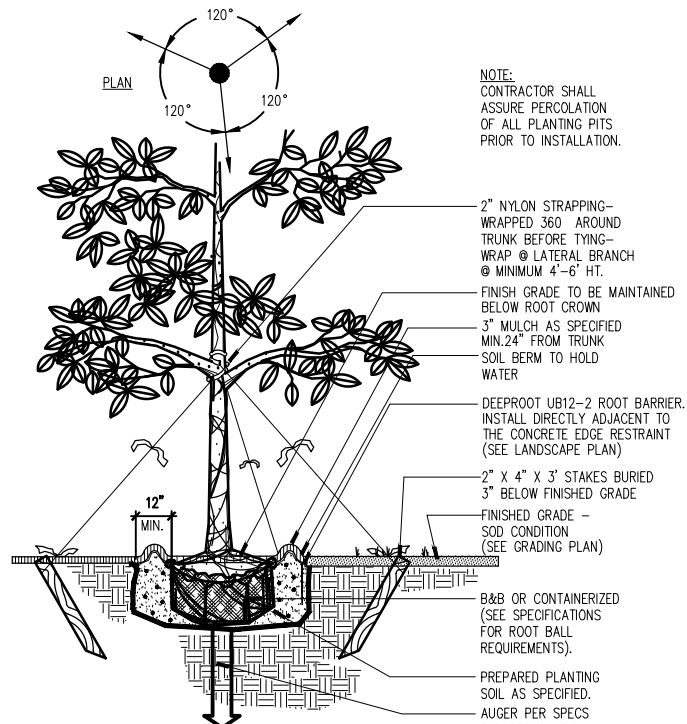
DULAND  
DESIGN  
land planners  
landscape architects



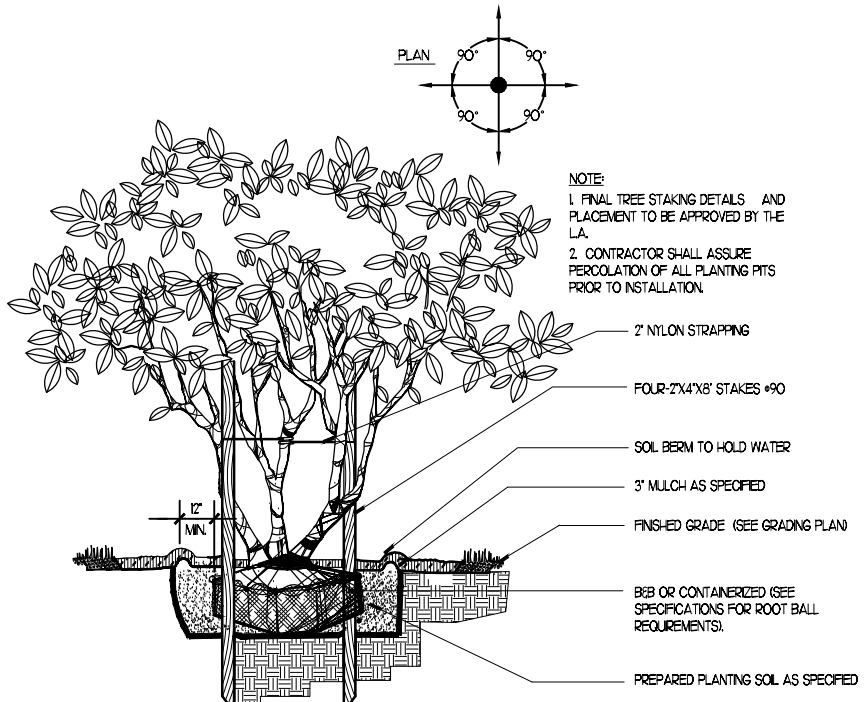
LA 6666948



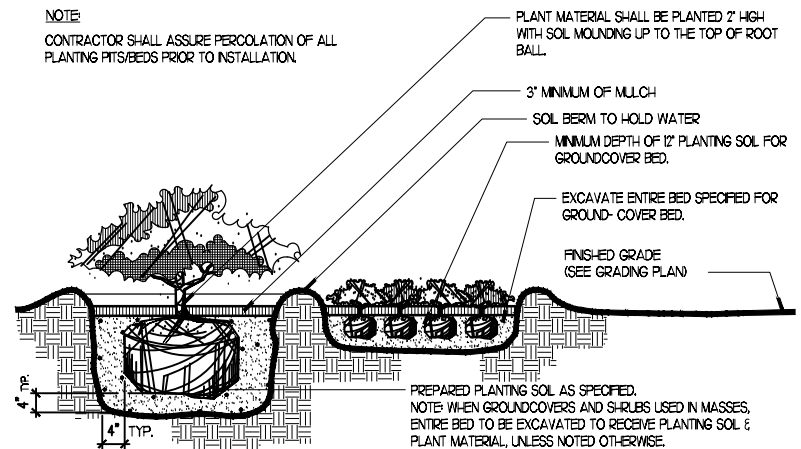
1 PALM  
SECTION  
DL\118018\1\1.dwg  
SCALE: N.T.S.



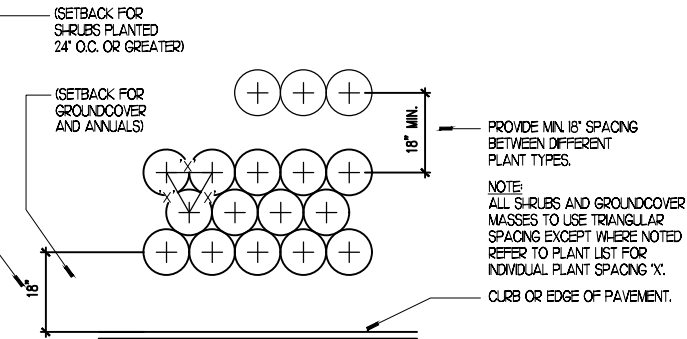
2 SHADE TREE  
SECTION  
DL\118018\_4.dwg  
SCALE: N.T.S.



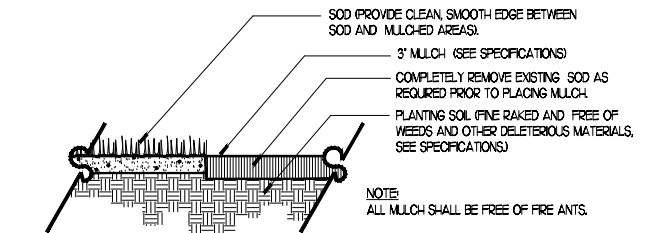
3 MULTI-TRUNK TREE  
SECTION  
DL\118018\1\5.dwg  
SCALE: N.T.S.



4 SHRUB AND GROUNDCOVER  
SECTION  
DL\118018\1\3.dwg  
SCALE: N.T.S.



5 TYPICAL PLANT SPACING  
PLAN  
DL\118018\1\2.dwg  
SCALE: N.T.S.



6 MULCH  
SECTION  
DL\118018\1\6.dwg  
SCALE: N.T.S.

Drawing name: C:\Users\arodu\Dropbox (Personal)\PROJECTS\124011 Sandbox\Drawings\4011\_PLNT.dwg L 3.03 Sep 05, 2024 2:10pm by: arodu