



# LINCOLN ROAD DISTRICT IMPROVEMENTS PLAYGROUND STUDIES

---

12/20/2024

## TABLE OF CONTENTS

**1.0** Potential Sites

**2.0** Cost Analysis

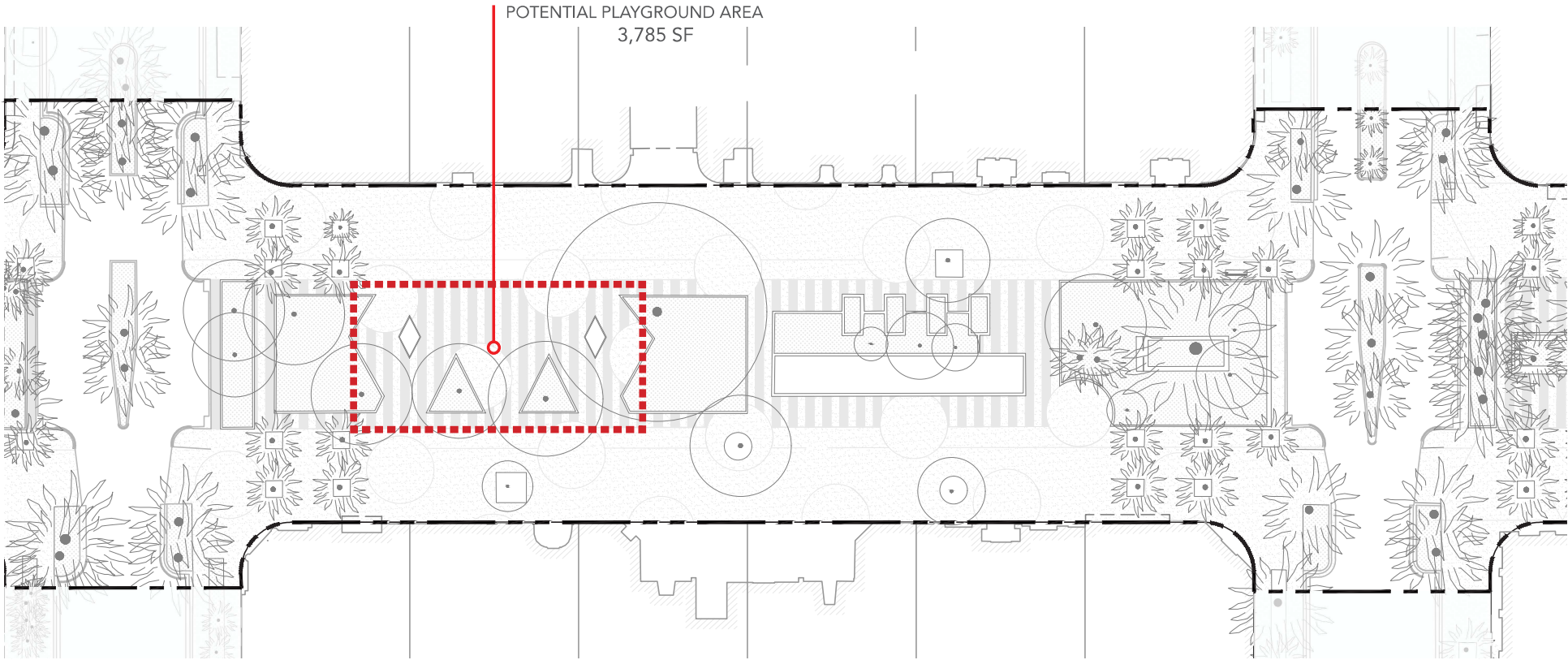
**3.0** 2022 Playground Designs

# LINCOLN ROAD

900 BLOCK- POTENTIAL SITE #1



LINCOLN ROAD  
900 BLOCK- POTENTIAL SITE #1





## LINCOLN ROAD

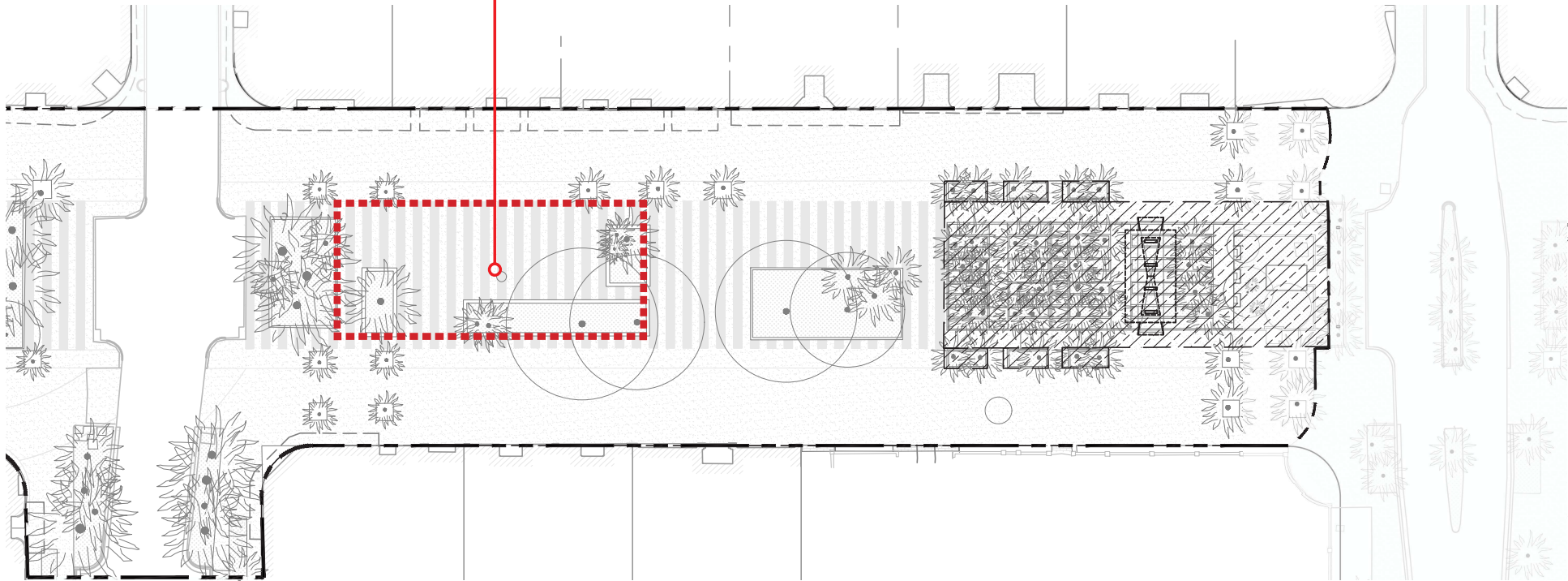
500 BLOCK- POTENTIAL SITE #2



LINCOLN ROAD  
500 BLOCK- POTENTIAL SITE #2

EXHIBIT C

POTENTIAL PLAYGROUND AREA  
3,708 SF





## LINCOLN ROAD

### EUCLID OVAL- POTENTIAL SITE #3



POTENTIAL PLAYGROUND AREA  
3,670 SF



## EUCLID PLAYScape

### 2022 COSTS



#### SWING FOLLY

**TOTAL COST (2022) = \$4.38M**

GENERAL CONDITIONS = \$543K

DEMO= \$123K

SITE IMPROVEMENTS\* = \$1.48M

**PLAY FEATURES = \$1M**

OTHER MARK-UPS\*\* = \$1.22M

#### Notes:

\* includes paving restoration, lighting, planterwalls and seatwalls. planting, irrigation and security bollards

\*\* includes CM fees, contingencies and escalation



#### LAPIDUS TREEHOUSE

**TOTAL COST (2022) = \$6.04M**

GENERAL CONDITIONS = \$727K

DEMO= \$123K

SITE IMPROVEMENTS\* = \$1.48M

**PLAY FEATURES = \$2M**

OTHER MARK-UPS\*\* = \$1.68M

#### Notes:

\* includes paving restoration, lighting, planterwalls and seatwalls. planting, irrigation and security bollards

\*\* includes CM fees, contingencies and escalation



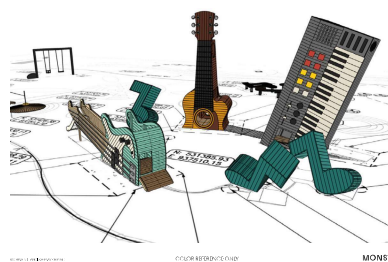
# EUCLID PLAYSCAPE COST COMPARISONS



**SWING FOLLY**  
**TOTAL COST (2022) = \$4.38M**



**LAPIDUS TREEHOUSE**  
**TOTAL COST (2022) = \$6.04M**



**MAURICE GIBB PARK PLAYGROUND**  
**TOTAL COST (2024) = UNKNOWN**



**PIER 26 PLAYGROUND**  
**TOTAL COST (2024) = \$4.1M**



**DOMINO PARK PLAYGROUND**  
**TOTAL COST (2019) = \$2M**

GENERAL CONDITIONS = \$543K  
DEMO= \$123K  
SITE IMPROVEMENTS = \$1.48M  
**PLAY FEATURES = \$1M**  
OTHER MARK-UPS = \$1.22M

GENERAL CONDITIONS = \$727K  
DEMO= \$123K  
SITE IMPROVEMENTS = \$1.48M  
**PLAY FEATURES = \$2M**  
OTHER MARK-UPS = \$1.68M

GENERAL CONDITIONS = N/A  
DEMO= N/A  
SITE IMPROVEMENTS = N/A  
**PLAY FEATURES = \$1.61M**  
OTHER MARK-UPS = N/A

GENERAL CONDITIONS = N/A  
DEMO= N/A  
SITE IMPROVEMENTS= N/A  
**PLAY FEATURES = N/A**  
OTHER MARK-UPS= N/A

GENERAL CONDITIONS = N/A  
DEMO= N/A  
SITE IMPROVEMENTS = N/A  
**PLAY FEATURES = N/A**  
OTHER MARK-UPS = N/A

TOTAL SIZE: 10,650 SF  
**TOTAL COST PER SF = \$411**

TOTAL SIZE: 10,650 SF  
**TOTAL COST PER SF = \$567**

TOTAL SIZE: N/A  
**TOTAL COST PER SF = N/A**

TOTAL SIZE: 6,720 SF  
**TOTAL COST PER SF = \$610**

TOTAL SIZE: 4,720 SF  
**TOTAL COST PER SF = \$423**

PLAY AREA SIZE: 2,060 SF  
**PLAY FEATURE COST PER SF= \$485**

PLAY AREA SIZE: 2,060 SF  
**PLAY FEATURE COST PER SF= \$970**

PLAY AREA SIZE: 9,780 SF  
**PLAY FEATURE COST PER SF = \$165**

PLAY AREA SIZE: N/A  
**PLAY FEATURE COST PER SF = N/A**

PLAY AREA SIZE: N/A  
**PLAY FEATURE COST PER SF = N/A**

Notes:  
Total cost include playground equipment, playground surfacing, paving restoration, lighting, planterwalls and seatwalls, planting, irrigation and security bollards, CM fees, contingencies and escalation.

Notes:  
Total cost include playground equipment, playground surfacing, paving restoration, lighting, planterwalls and seatwalls, planting, irrigation and security bollards, CM fees, contingencies and escalation.

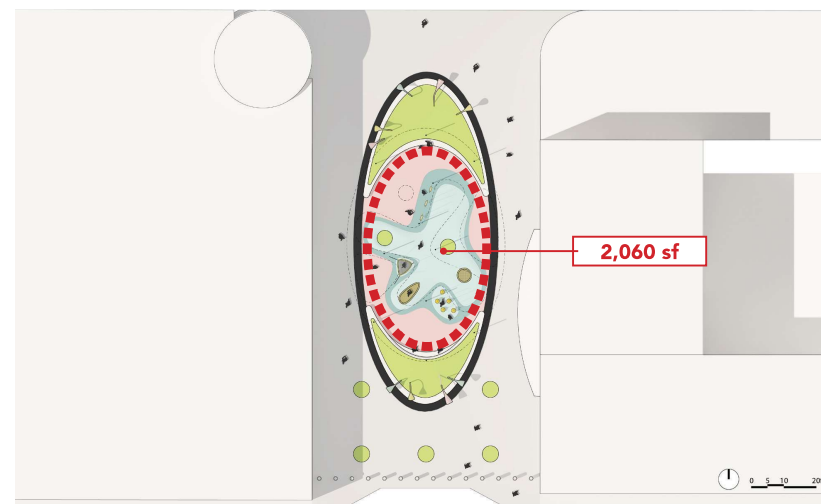
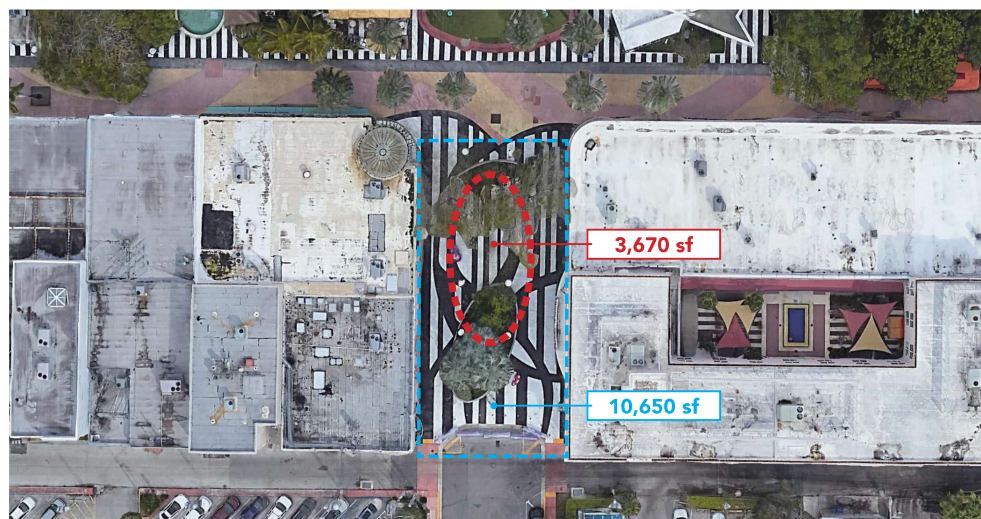
Notes:  
Play feature costs limited to shade structure & foundations, playground equipment, playground surfacing and fence.

Notes:  
Total costs include playground equipment, playground surfacing, planter walls and seatwalls, planting and lighting, CM fees, contingencies and escalation.

Notes:  
Total costs include playground equipment, playground surfacing, planter walls and seatwalls, planting and lighting.

# EUCLID PLAYScape SCALE COMPARISON

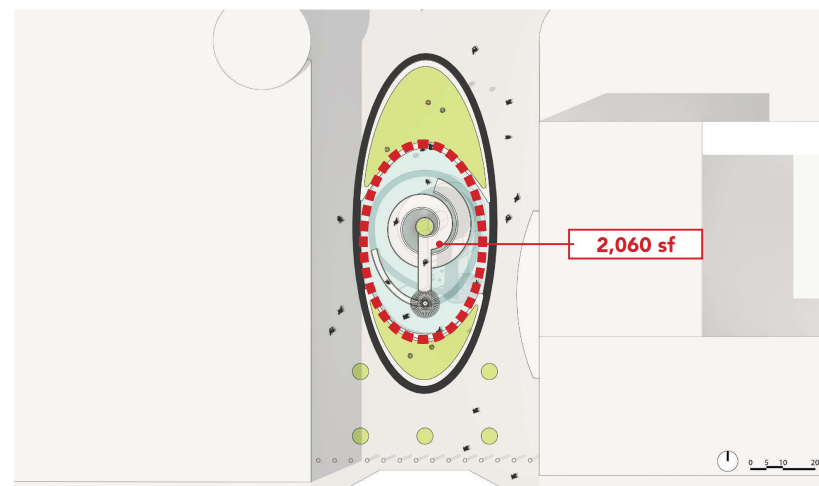
## OPTION 1- SWING FOLLY (3,670 SF)





# EUCLID PLAYScape SCALE COMPARISON

## OPTION 2- LAPIDUS TREEHOUSE(3,670 SF)



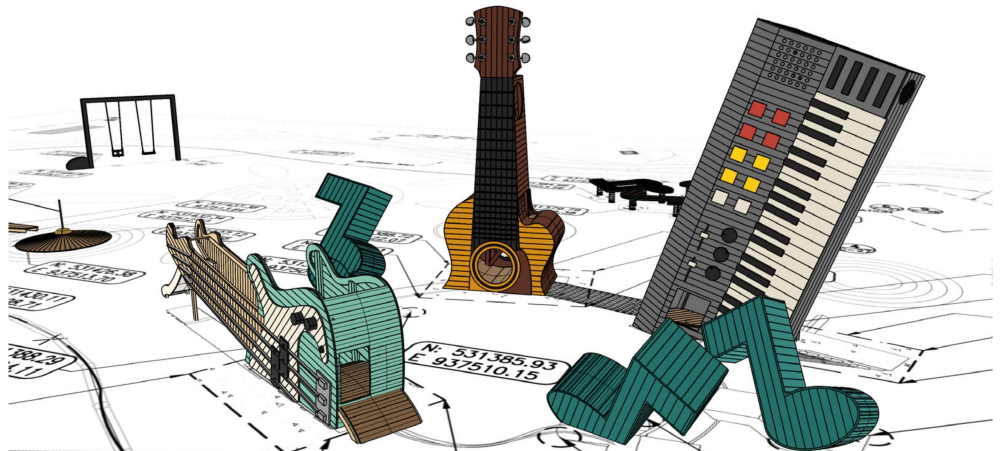
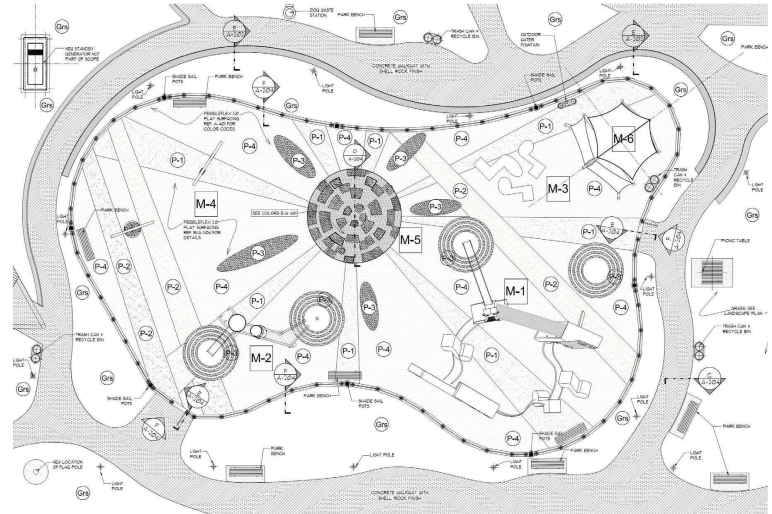
JAMES  
CORNER  
FIELD  
OPERATIONS





## EXHIBIT C

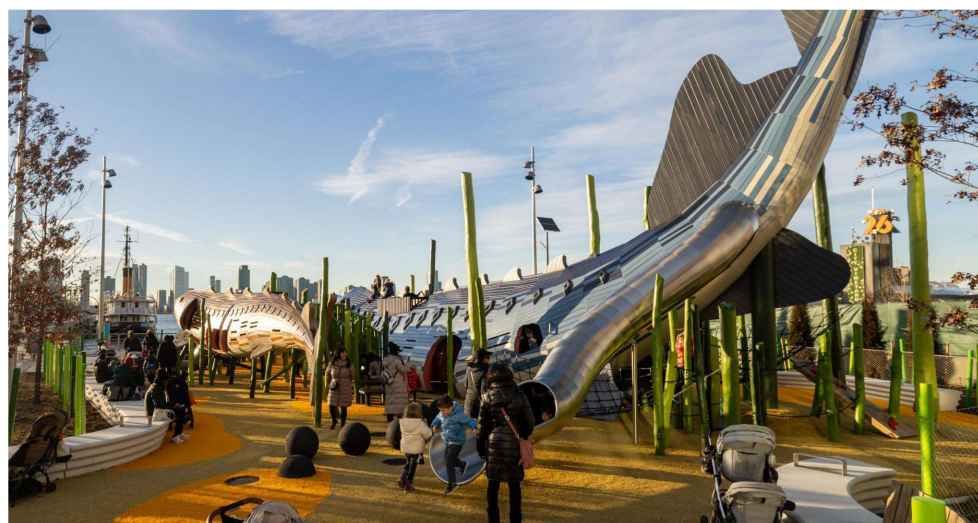
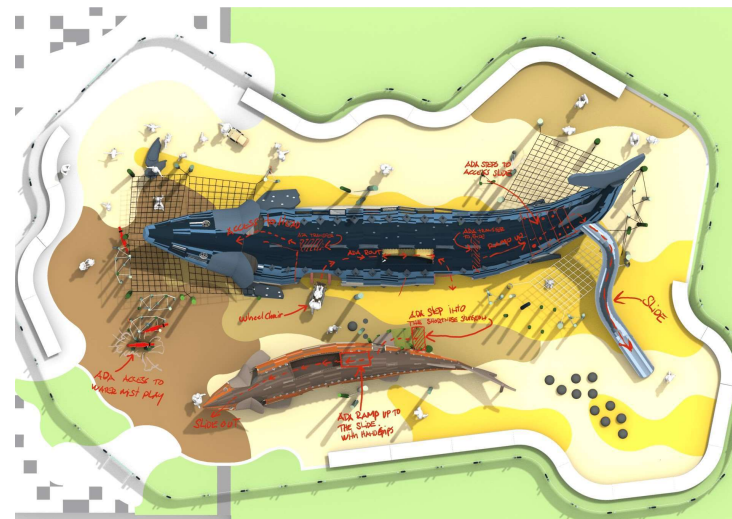
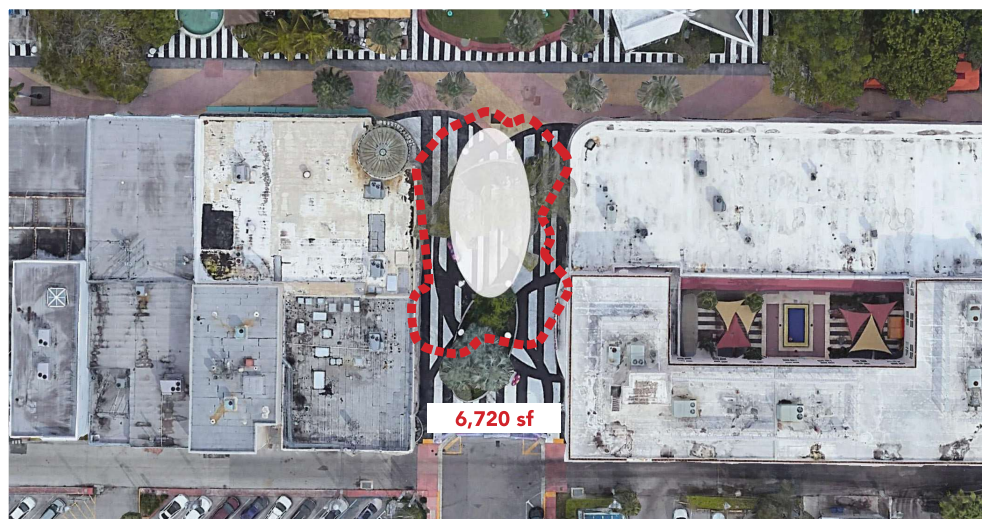
EXHIBIT C





# EUCLID PLAYScape SCALE COMPARISON

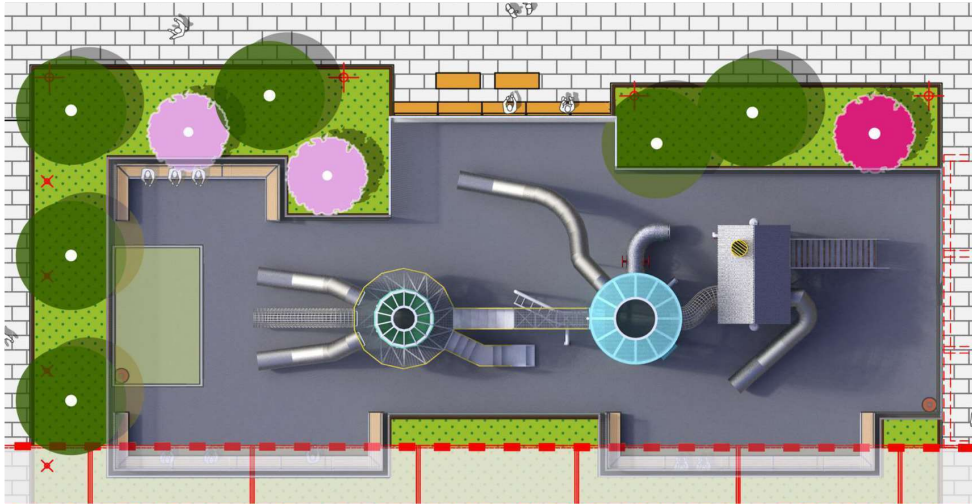
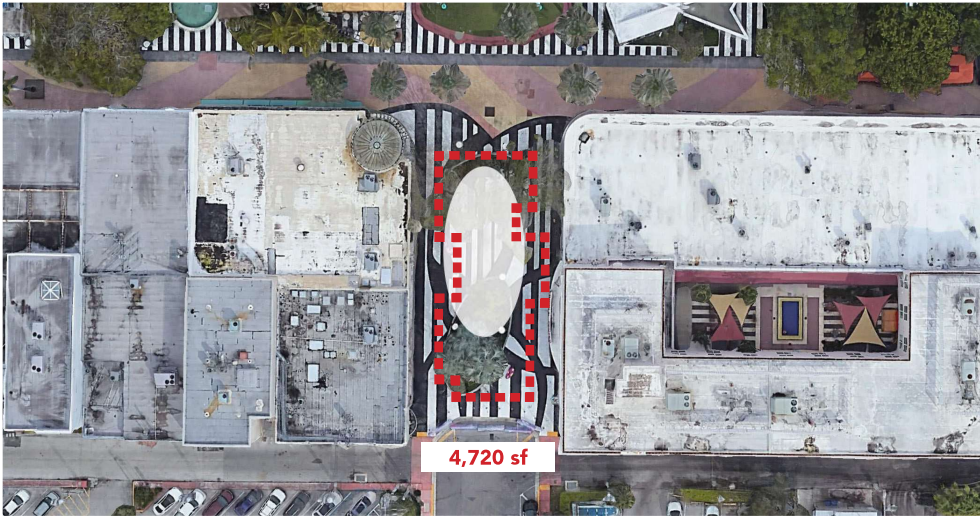
## PIER 26 PLAYGROUND, NEW YORK (6,720 SF)





**EUCLID PLAYScape SCALE COMPARISON**  
DOMINO PARK PLAYGROUND (4,720 SF)

EXHIBIT C



# **EUCLID PLAYScape**

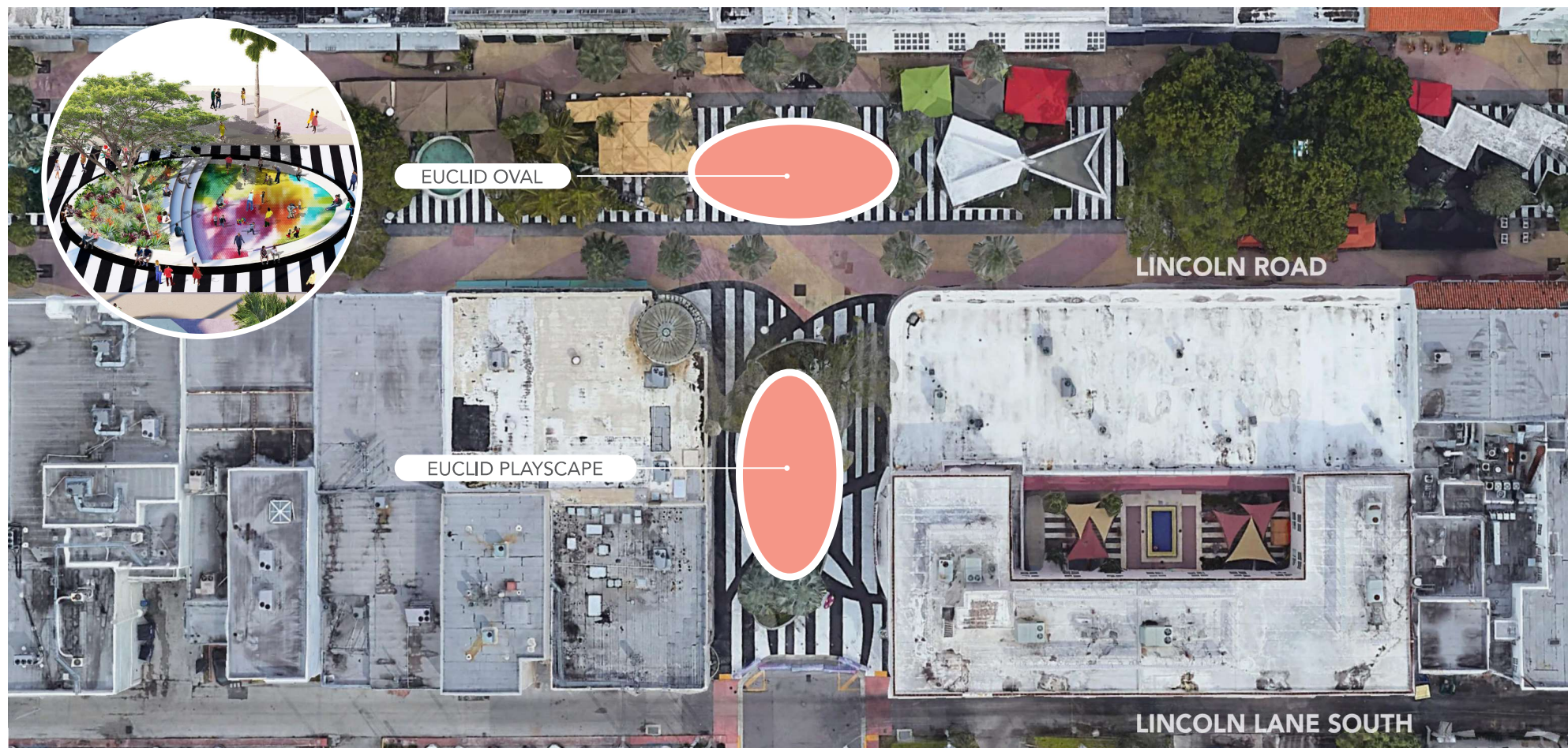
EUCLID AVE. AND LINCOLN RD.



## LINCOLN ROAD AND EUCLID AVENUE

The new play feature, located south of Lincoln Road, at Euclid Avenue will echo the historic Euclid Oval shape by creating a new space bound by seatwalls and planters of a similar architectural vocabulary as the proposed Euclid Oval renovation.

Bounding planters will allow the introduction of dense canopy for shade. Planter walls will contain the space allowing for children and families to play freely in secure environment





**EUCLID PLAYScape**  
OPTION 1- SWING FOLLY

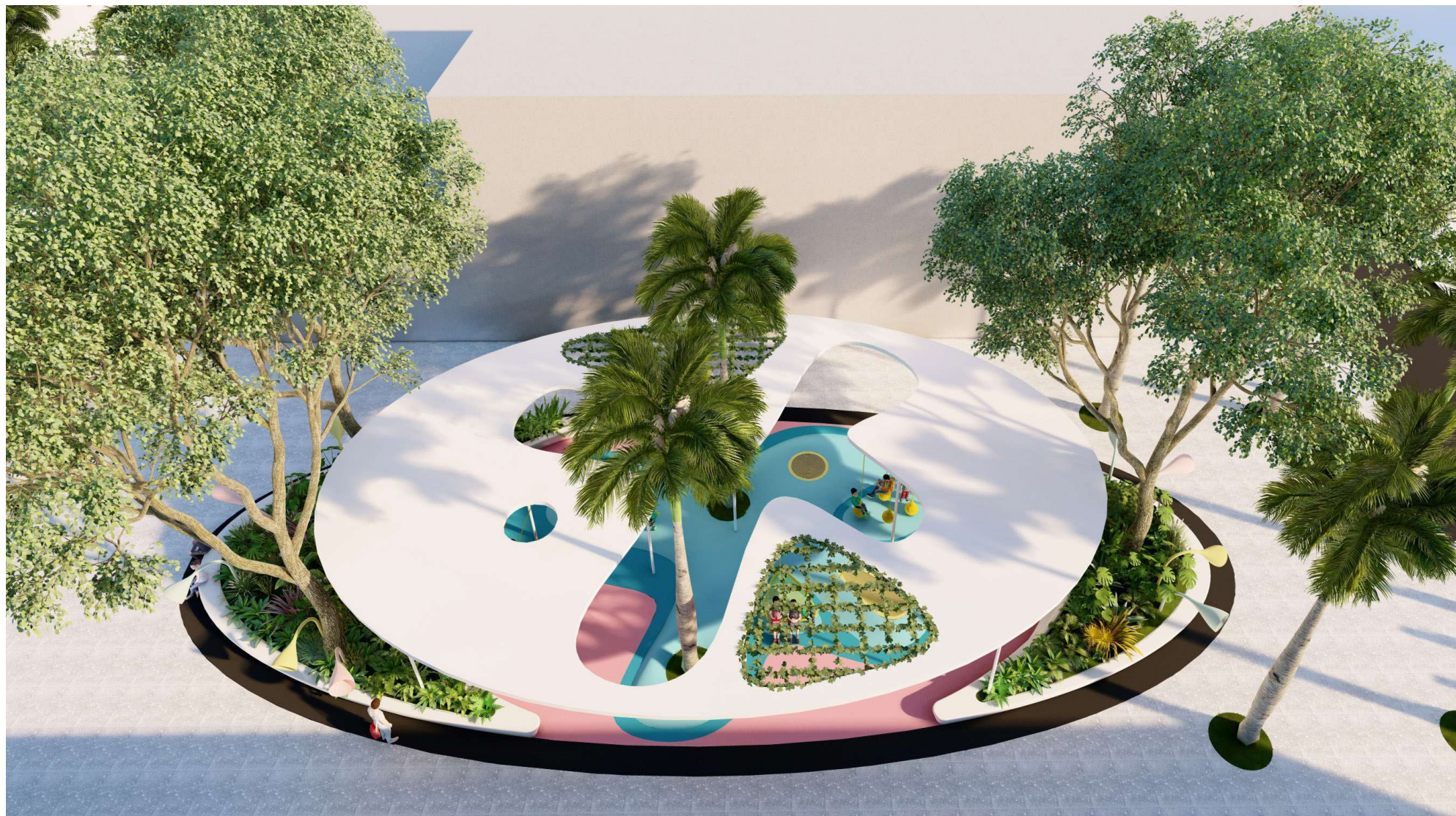
EXHIBIT C





# EUCLID PLAYScape

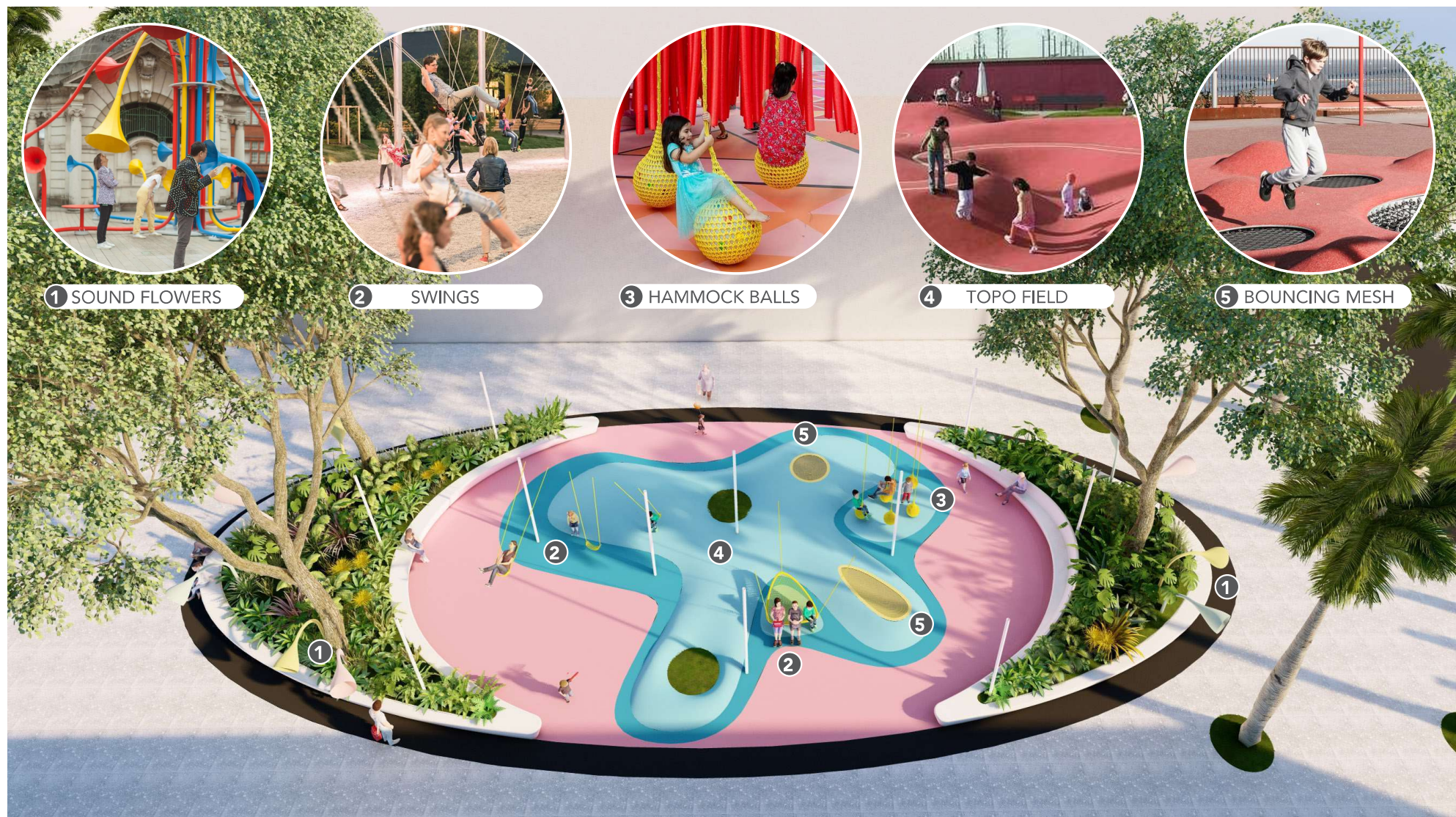
## OPTION 1- SWING FOLLY





# EUCLID PLAYScape

## OPTION 1- SWING FOLLY





# EUCLID PLAYScape

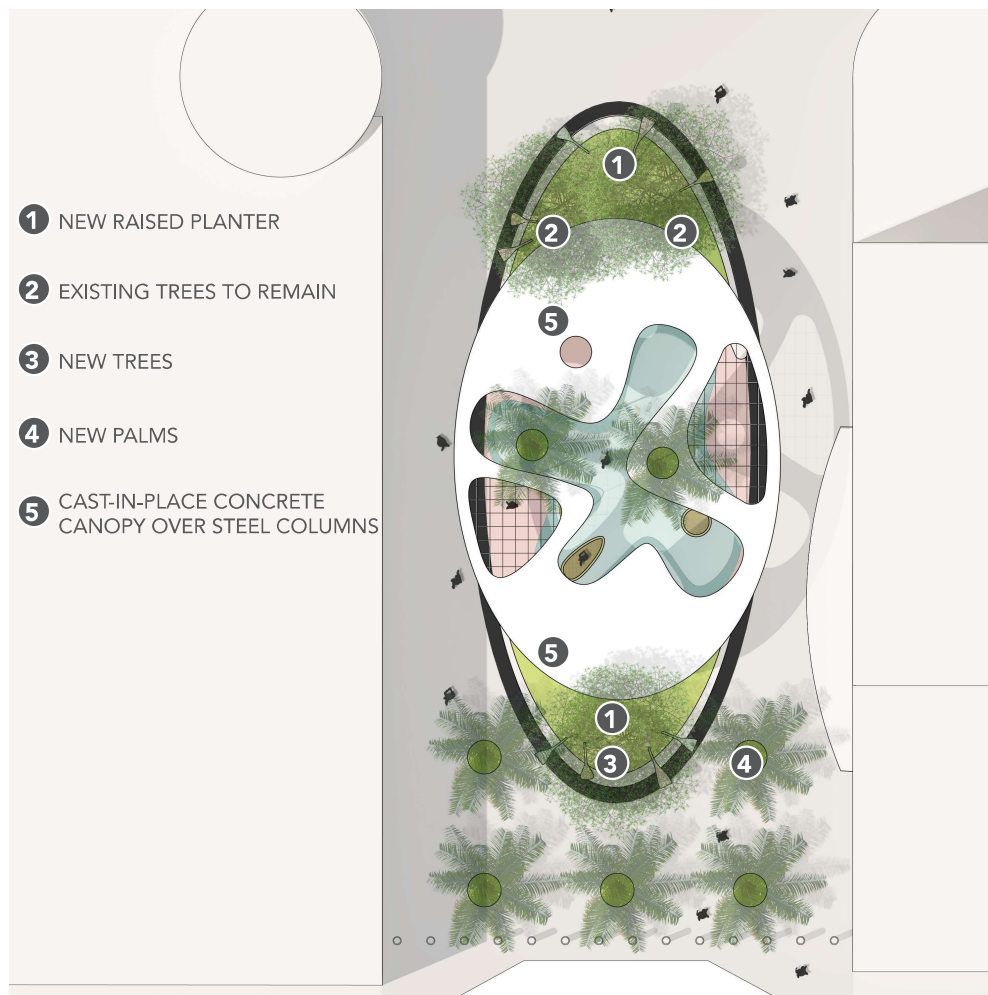
## OPTION 1- SWING FOLLY





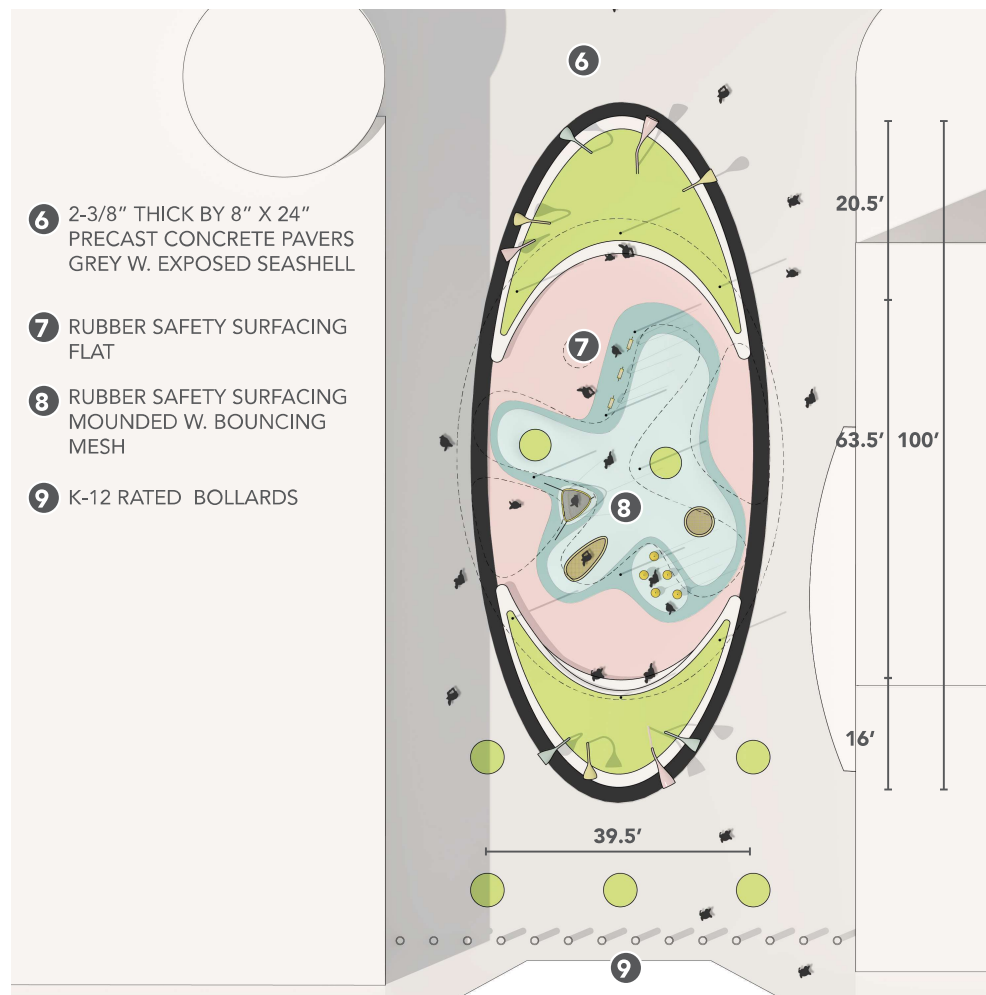
# EUCLID PLAYScape

## OPTION 1- SWING FOLLY

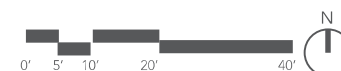


CANOPY PLAN

JAMES  
CORNER  
FIELD  
OPERATIONS

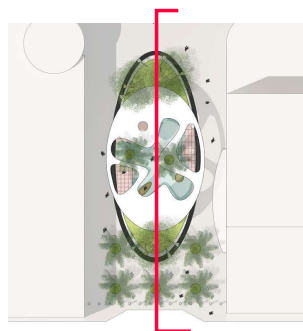


FLOOR PLAN



# EUCLID PLAYScape

## OPTION 1- SWING FOLLY



KEY PLAN



LONGITUDINAL SECTION





**EUCLID PLAYScape**  
OPTION 2- LAPIDUS TREEHOUSE

EXHIBIT C





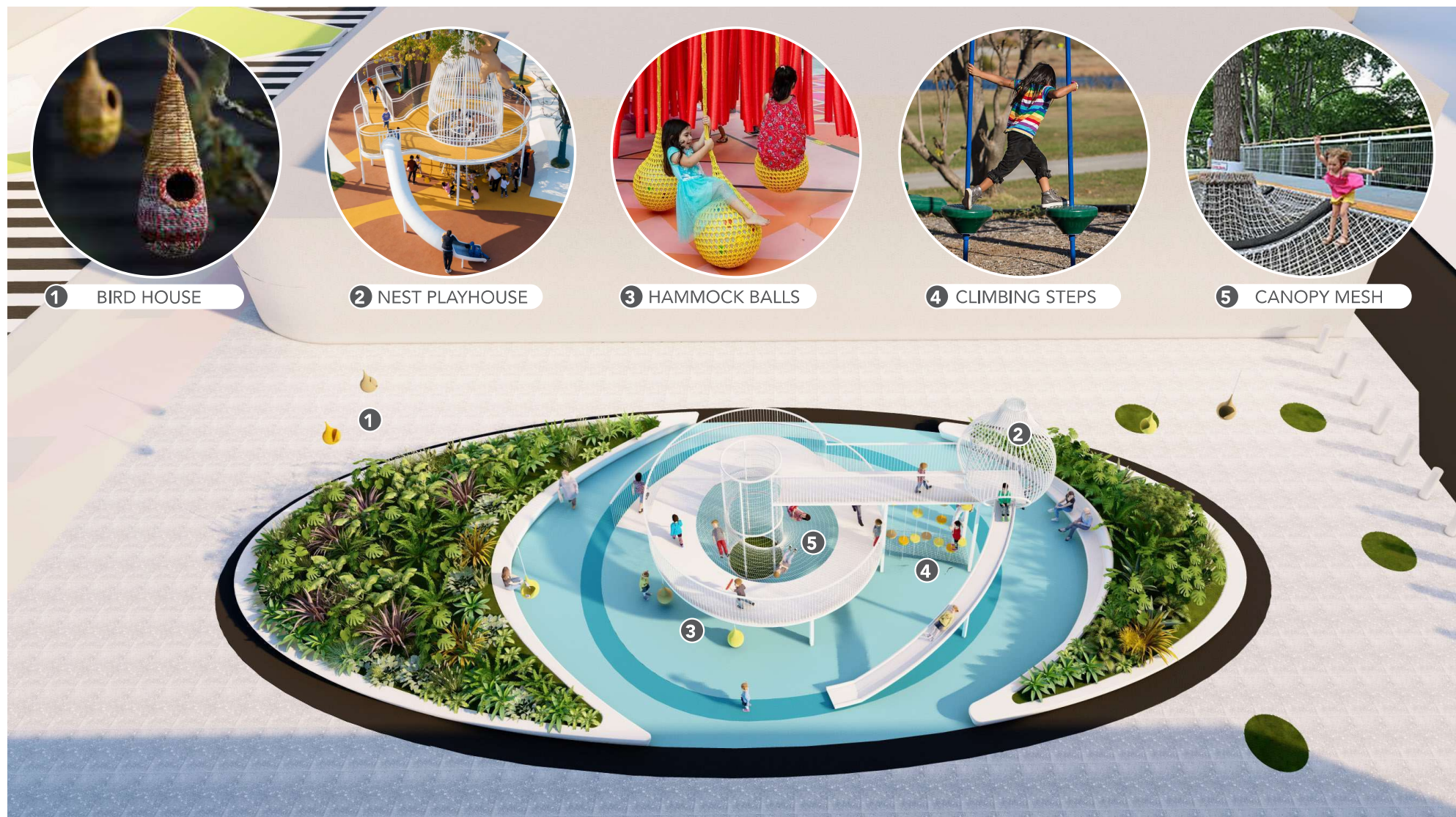
## EUCLID PLAYSCAPE OPTION 2- LAPIDUS TREEHOUSE





# EUCLID PLAYScape

## OPTION 2- LAPIDUS TREEHOUSE





# EUCLID PLAYScape

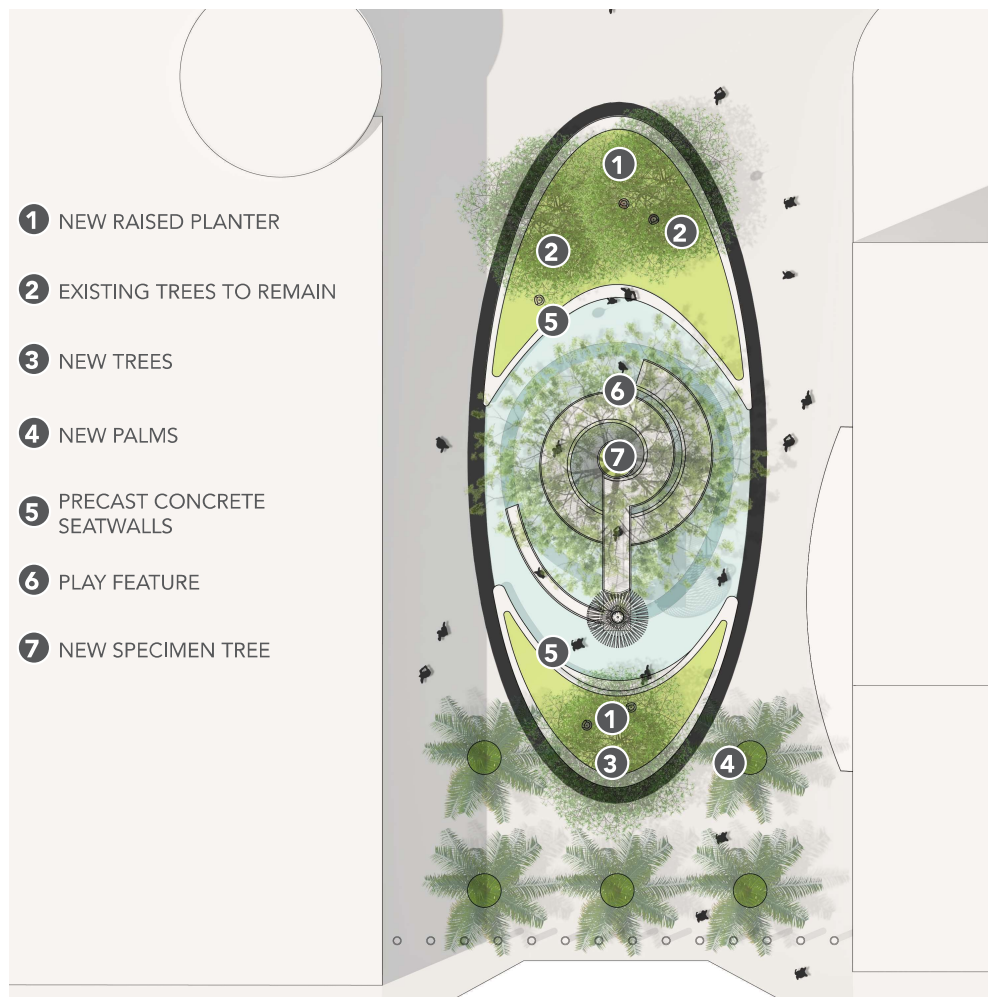
## OPTION 2- LAPIDUS TREEHOUSE



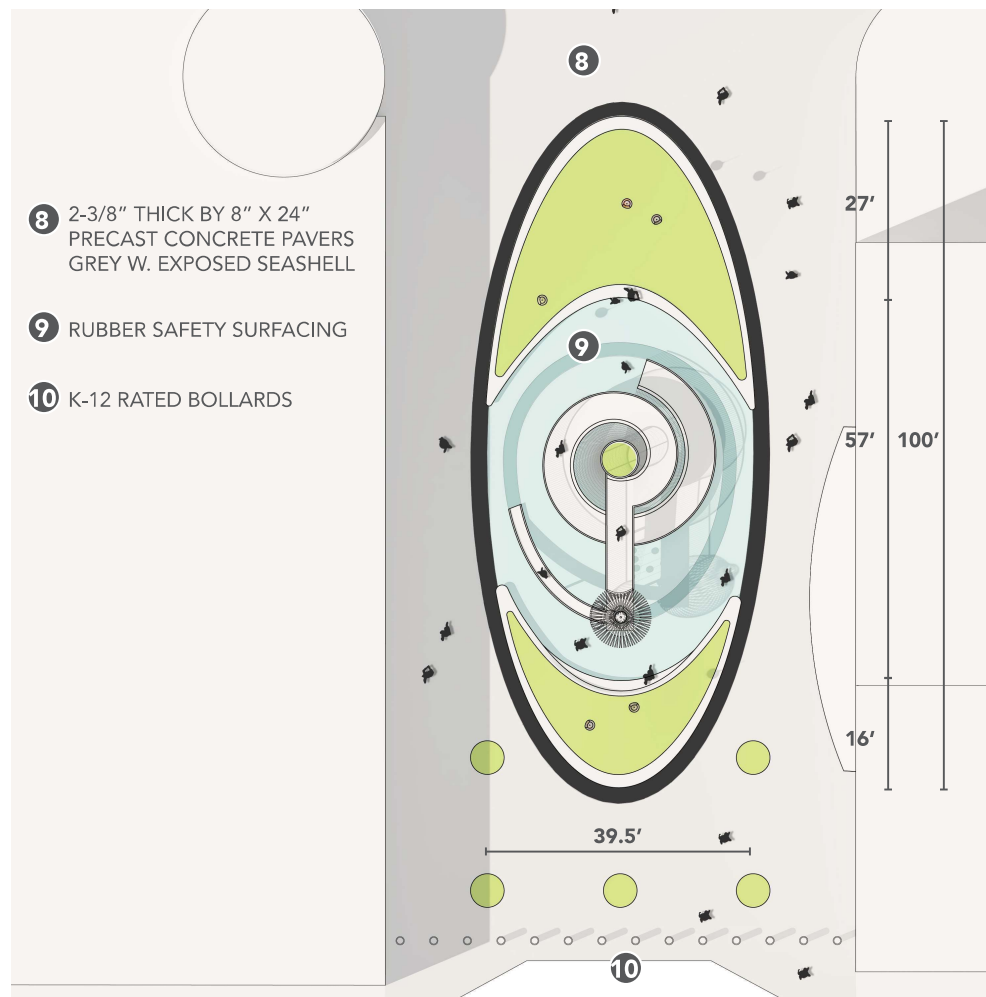


# EUCLID PLAYScape

## OPTION 2- LAPIDUS TREEHOUSE



CANOPY PLAN

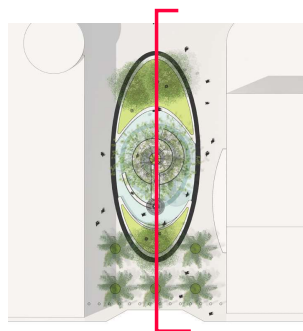


FLOOR PLAN



# EUCLID PLAYScape

## OPTION 2- LAPIDUS TREEHOUSE



KEY PLAN



LONGITUDINAL SECTION

