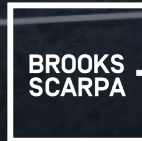


# MIAMI BEACH 41 STREET CORRIDOR REVITALIZATION PROJECT

DESIGN REVIEW BOARD PRESENTATION  
JULY 2, 2024



MIAMI BEACH

SCOPE OF WORK



FROM ALTON ROAD TO PINE TREE DRIVE

PROJECT BOUNDARY AS OUTLINED AND PROVIDED BY THE CITY OF MIAMI BEACH

# EXISTING CONDITIONS

EXISTING CHALLENGES



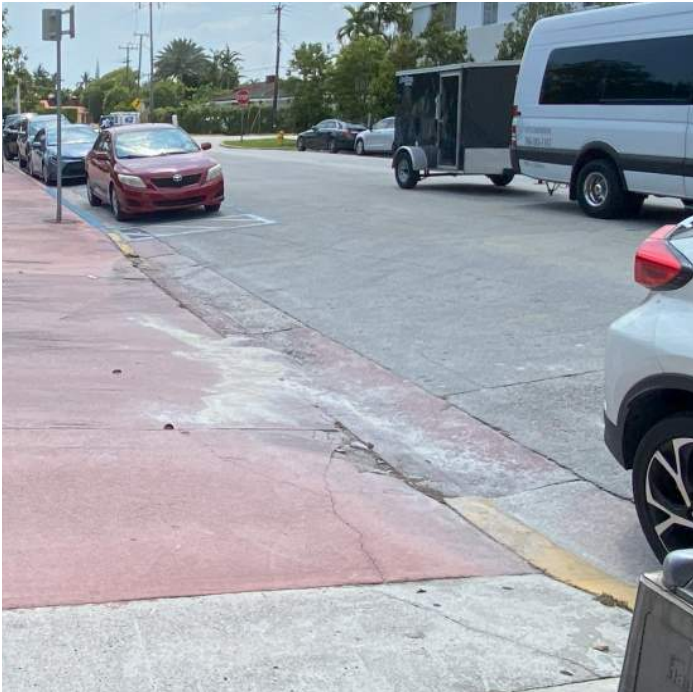
LOOSE CONCRETE PAVER



INAPPROPRIATE LANDSCAPING



ACCESSIBILITY ISSUES



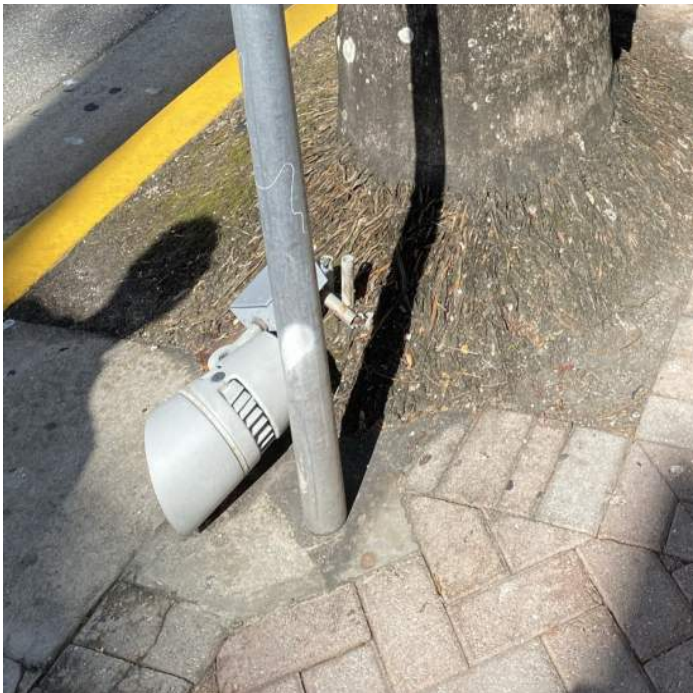
BROKEN PAVEMENT



UNSAFE WIRING



OUTDATED STREET LAMPS



BROKEN LIGHT FIXTURES



DAMAGED SIDE-STREETS

# 41ST STREET REVITALIZATION PLAN

EXISTING SITE PLAN



30% DESIGN SITE PLAN



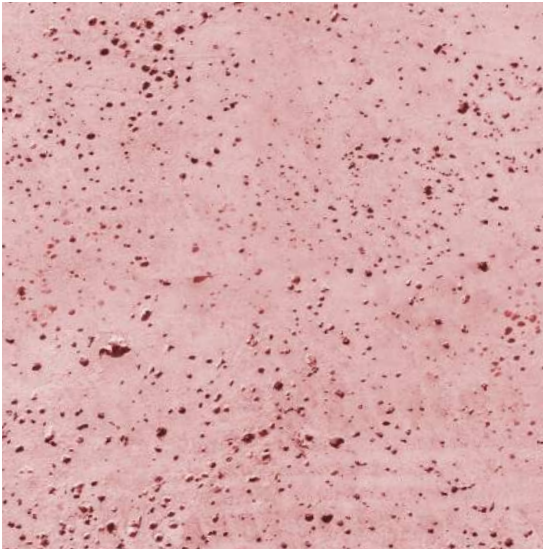
60% DESIGN SITE PLAN



60% DESIGN SITE PLAN



KIT OF PARTS



Miami Beach Red Concrete



Branded Concrete



Public Art



Bike Racks



Benches



Shade Trees



Landscaping



Precast Seat Walls



Trash Receptacles



Bus Stops

PROPOSED PLANTING PALETTE

EXISTING CANOPY



Royal Palm  
*Roystonea regia*



Strangler Fig  
*Ficus aurea*



Green Buttonwood  
*Conocarpus erectus*

IF THE ROOT OF AN EXISTING ROYAL PALM ARE AT GRADE, THEN METAL GRATING BECOMES THE PRIMARY TOOL TO PROTECT THE TREE AND EXPAND THE WALKS



EXISTING



PROPOSED

LARGE CANOPY



Live Oak  
*Quercus virginiana*



Green Buttonwood  
*Conocarpus erectus*



Gumbo Limbo  
*Bursera simaruba*



Mahogany Tree  
*Swietenia mahogani*



Wild Tamarind  
*Lysiloma latisiliquum*

MEDIUM CANOPY



Silver Buttonwood  
*Conocarpus erectus*



Pigeon Plum  
*Coccoloba diversifolia*



Autograph Tree  
*Clusia rosea*

GROUND COVERS



Wart Fern  
*Phymatosorus scolopendria*



Philodendron 'Burle-Marx'  
*Philodendron burle-marxii*



Monstera  
*Monstera deliciosa*



Dwarf palmetto  
*Sabal minor*



Muhly Grass  
*Muhlenbergia capillaris*



Milkweed  
*Asclepias syriaca*



Spartina Grass  
*Spartina*



Fakahatchee Grass  
*Tripsacum dactyloides*



Perennial Peanut  
*Arachis glabrata*

SUSTAINABILITY

- Combating Heat Island effect with light materials

EXISTING FURNITURE



Benches

REFINISHED STREET FURNITURE



Stainless Steel/  
Aluminum Mill Finish

PROPOSED FURNITURE

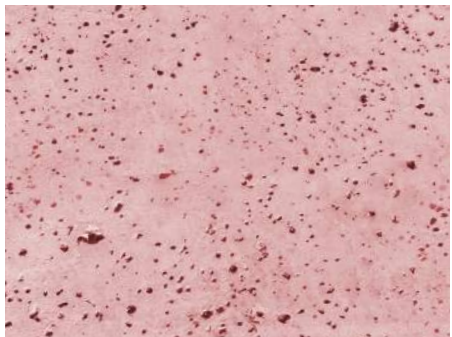


Landscape Forms  
*Milenio*



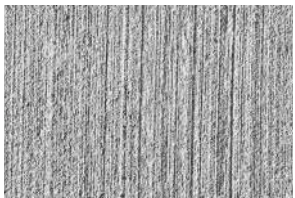
Wausau  
*Seat Walls*

PRECAST SEAT WALLS

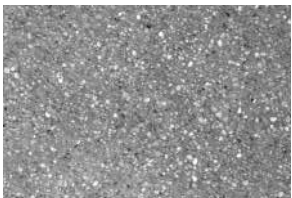


Miami Beach Red Concrete

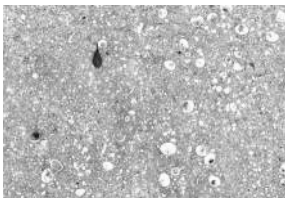
PROPOSED PAVING  
MATERIAL



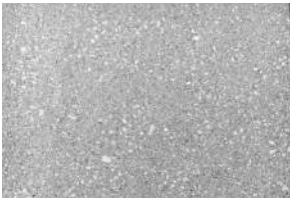
Broom Finish



Exposed Aggregate



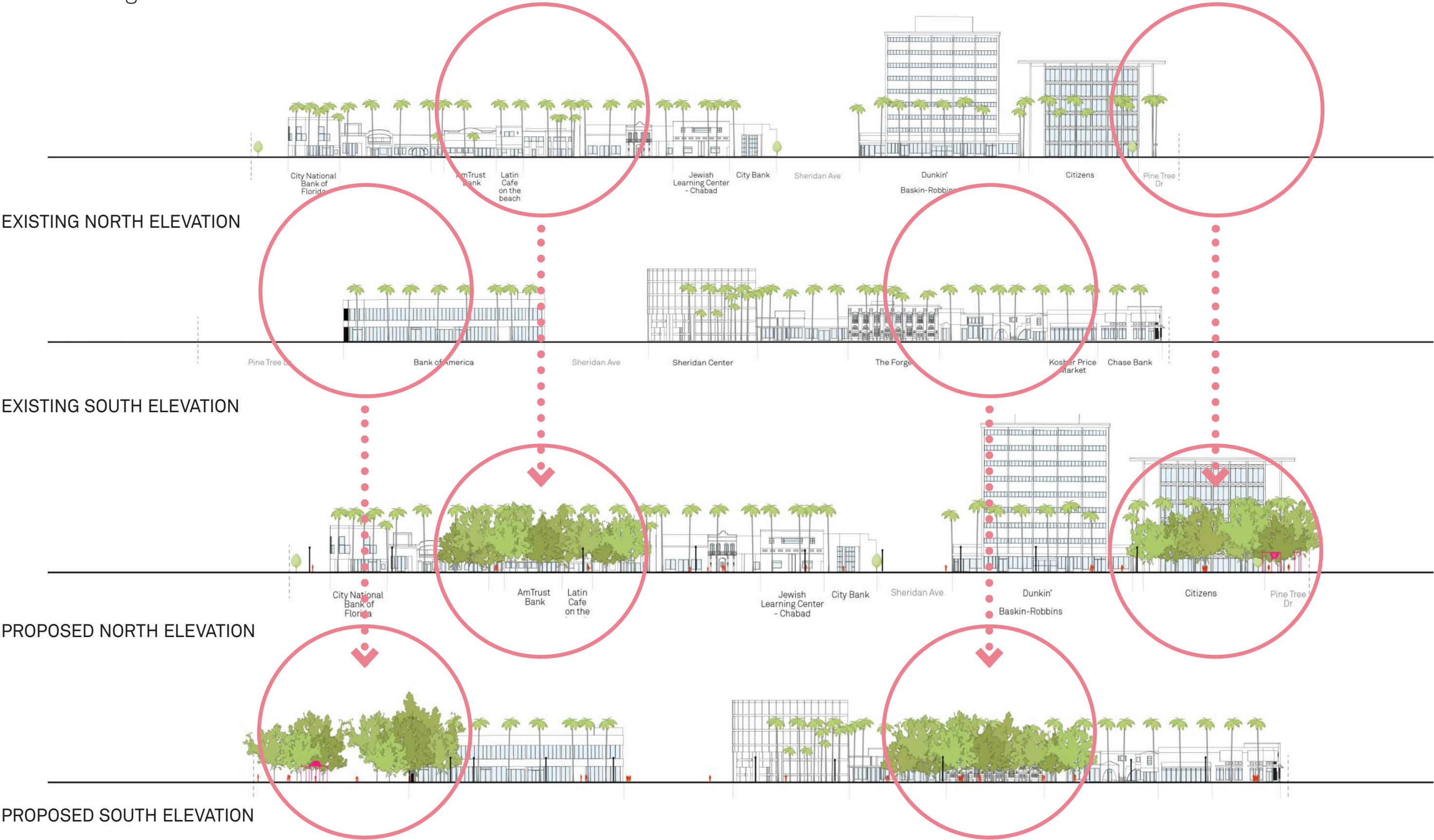
Seashell Aggregate



Light Sandblasted

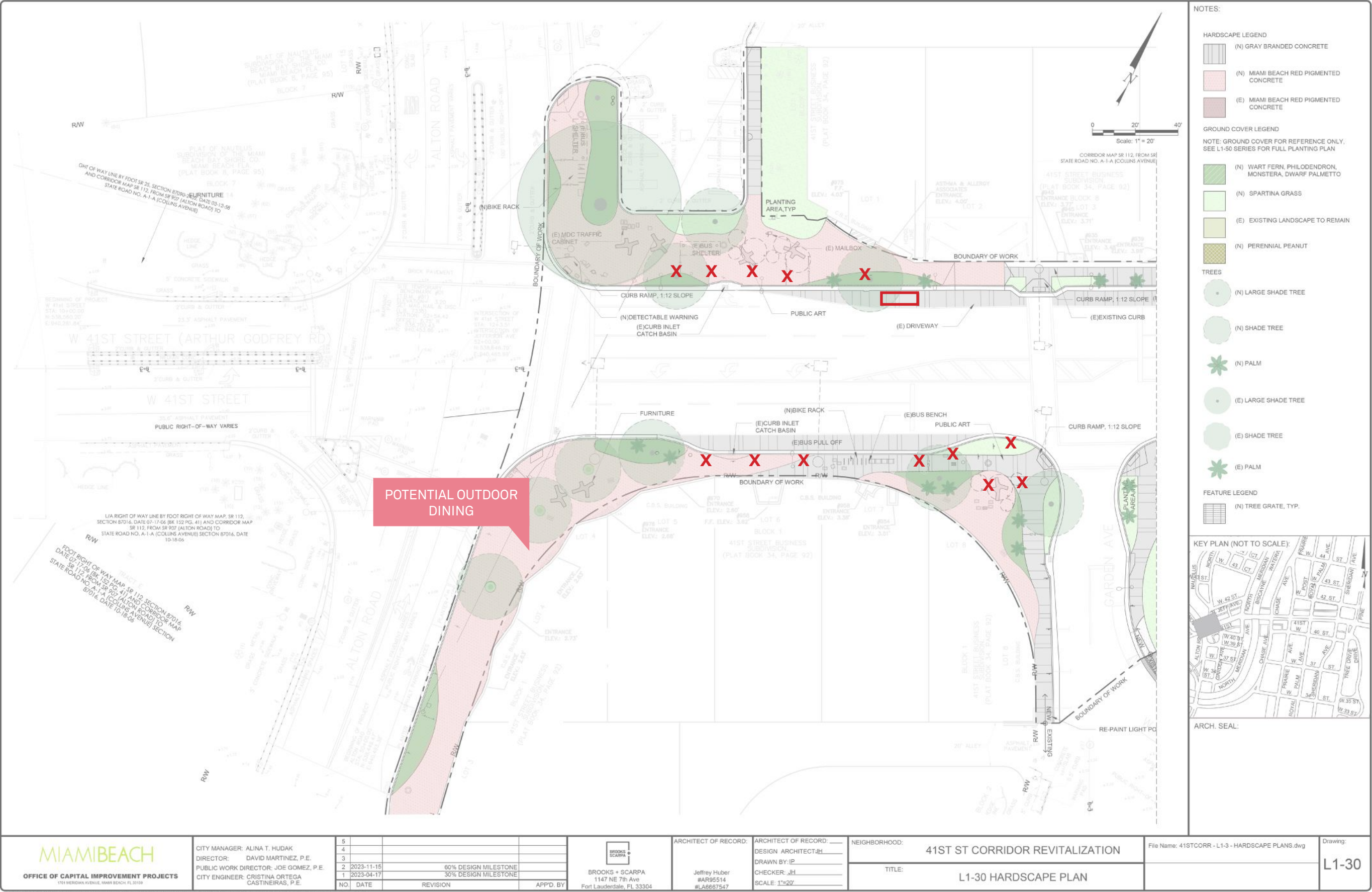
SUSTAINABILITY

- Combating Heat Island effect with shade trees





CURRENT DESIGN - ALTON ROAD









PRECEDENTS

PROPOSED PUBLIC ART AND GATEWAY FEATURES



Miami Beach Soundscape  
*West 8*



Miami Design District  
*Bouroullec Brothers*



Firefly - moving wall  
*Ned Kahn*



Gateway Pavilion  
*Pembroke Pines, FL*



CAM Museum of Art  
*Raleigh, NC*

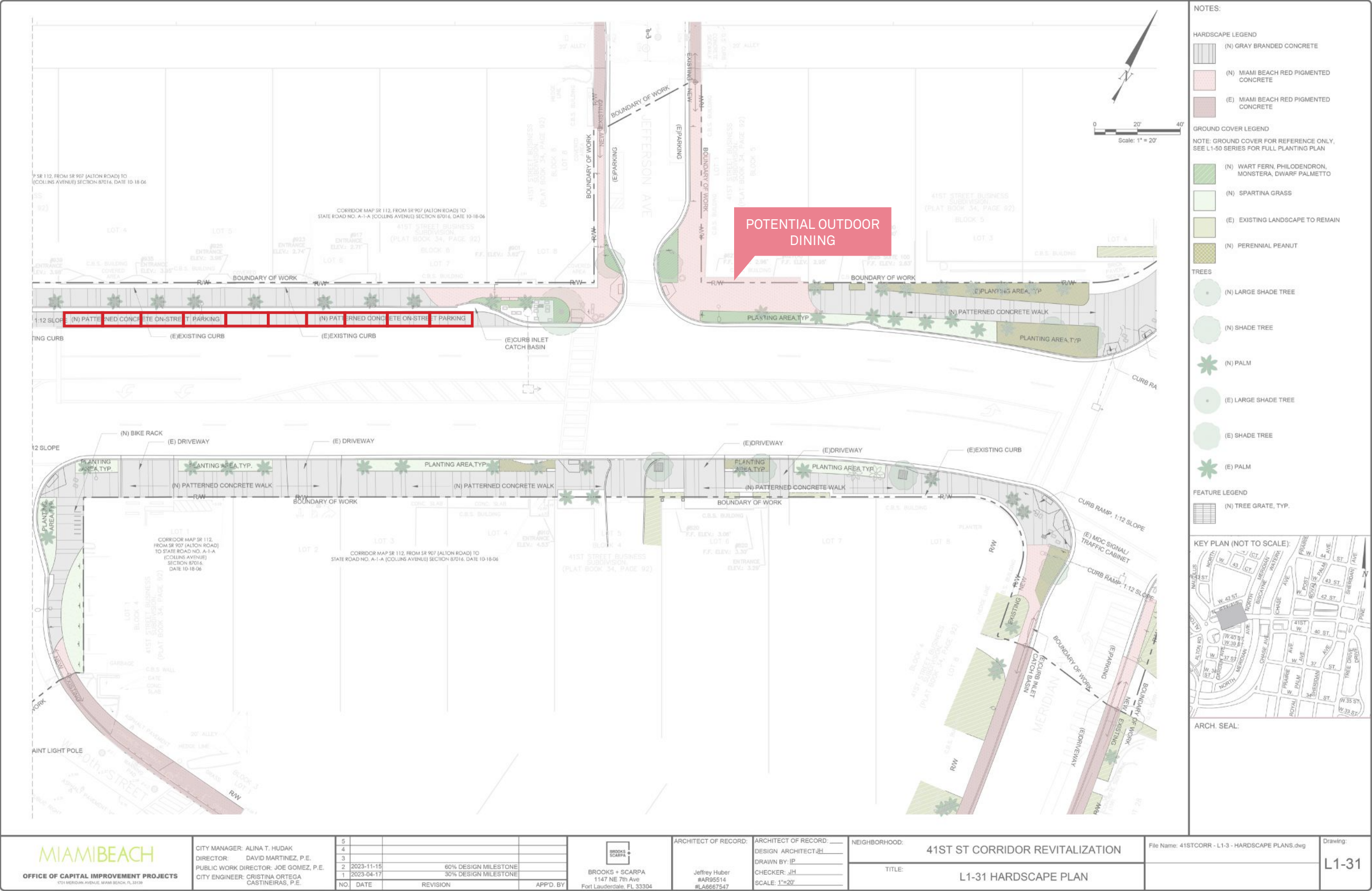


Proposed Gateway Art Feature  
*Bent pipe, metal mesh, marine grade paint*



<b>MIAMI BEACH</b> OFFICE OF CAPITAL IMPROVEMENT PROJECTS 1751 BERGAVEN AVENUE, MIAMI BEACH, FL 33139		CITY MANAGER: ALINA T. HUDAK DIRECTOR: DAVID MARTINEZ, P.E. PUBLIC WORK DIRECTOR: JOE GOMEZ, P.E. CITY ENGINEER: CRISTINA ORTEGA CASTINEIRAS, P.E.		<table border="1"> <tr><td>5</td><td></td><td></td><td></td></tr> <tr><td>4</td><td></td><td></td><td></td></tr> <tr><td>3</td><td></td><td></td><td></td></tr> <tr><td>2</td><td>2023-11-15</td><td>60% DESIGN MILESTONE</td><td></td></tr> <tr><td>1</td><td>2023-04-17</td><td>30% DESIGN MILESTONE</td><td></td></tr> <tr> <th>NO.</th><th>DATE</th><th>REVISION</th><th>APPD. BY</th></tr> </table>		5				4				3				2	2023-11-15	60% DESIGN MILESTONE		1	2023-04-17	30% DESIGN MILESTONE		NO.	DATE	REVISION	APPD. BY	<b>BROOKS + SCARPA</b> 1147 NE 7th Ave Fort Lauderdale, FL 33304 Jeffrey Huber #AR95514 #LA6667547		ARCHITECT OF RECORD: _____ DESIGN ARCHITECT: JH DRAWN BY: JP CHECKER: JH SCALE: 1"=20'		NEIGHBORHOOD: 41ST ST CORRIDOR REVITALIZATION TITLE: L1-31 HARDSCAPE PLAN		File Name: 41STCORR - L1-3 - HARDSCAPE PLANS.dwg Drawing: L1-31
5																																				
4																																				
3																																				
2	2023-11-15	60% DESIGN MILESTONE																																		
1	2023-04-17	30% DESIGN MILESTONE																																		
NO.	DATE	REVISION	APPD. BY																																	

CURRENT DESIGN - JEFFERSON AVE.



EXISTING



PROPOSED  
AECOM



Bus Bay





LIGHTING OPTION 1



LIGHTING OPTION 2

EXHIBIT A



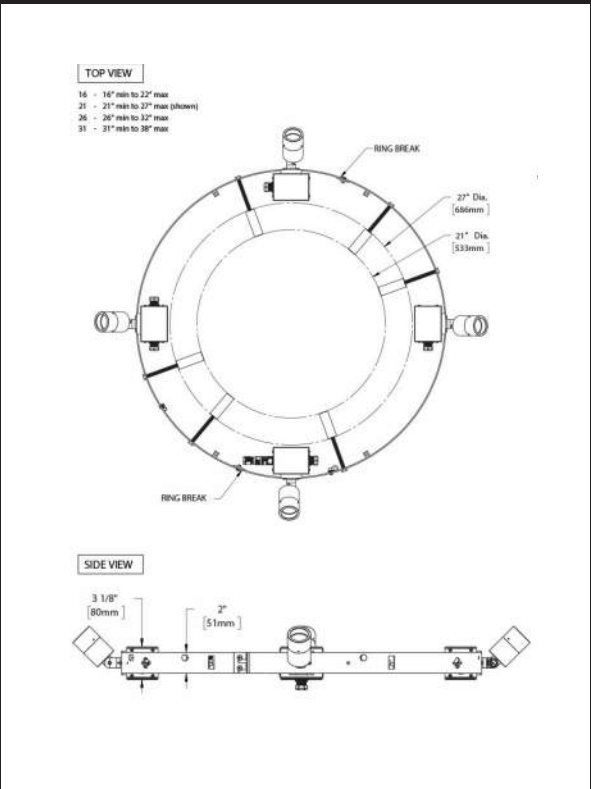
LIGHTING OPTION 3



LIGHTING OPTIONS | WALKS

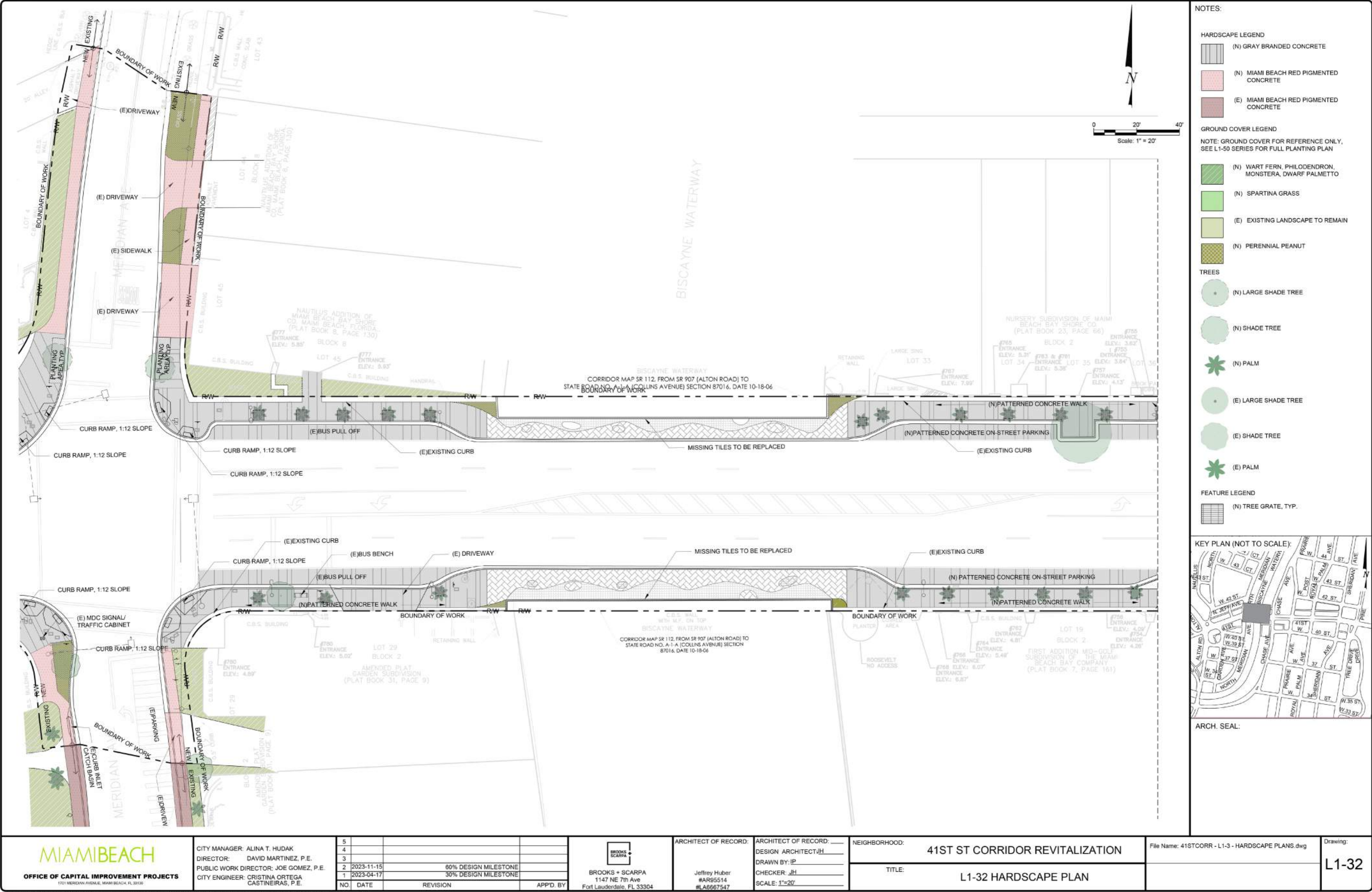
- Four adjustable ring sizes
- Remote or integral power supply
- Tree-friendly mounting
- 1/8” stainless steel construction

ACCENT LIGHTS



B-K LIGHTING  
PALM TREE RING

CURRENT DESIGN - BRIDGE OVER BISCAIYNE WATERWAY



THIS SPACE RESERVED FOR PROJECT MILESTONE



**NOTES:**

**HARDSCAPE LEGEND**

- (N) GRAY BRANDED CONCRETE
- (N) MIAMI BEACH RED PIGMENTED CONCRETE
- (E) MIAMI BEACH RED PIGMENTED CONCRETE

**GROUND COVER LEGEND**

NOTE: GROUND COVER FOR REFERENCE ONLY. SEE L-1-50 SERIES FOR FULL PLANTING PLAN.

- (N) WART FERN, PHILODENDRON, MONSTERA, DWARF PALMETTO
- (N) SPARTINA GRASS
- (E) EXISTING LANDSCAPE TO REMAIN
- (N) PERENNIAL PEANUT

**TREES**

- (N) LARGE SHADE TREE
- (N) SHADE TREE
- (N) PALM
- (E) LARGE SHADE TREE
- (E) SHADE TREE
- (E) PALM

**FEATURE LEGEND**

- (N) TREE GRATE, TYP.

**KEY PLAN (NOT TO SCALE):**

ARCH. SEAL:

<b>MIAMIBEACH</b> OFFICE OF CAPITAL IMPROVEMENT PROJECTS 1701 BROWARD AVENUE, MIAMI BEACH, FL 33139	CITY MANAGER: ALINA T. HUDAK	5			
	DIRECTOR: DAVID MARTINEZ, P.E.	4			
	PUBLIC WORK DIRECTOR: JOE GOMEZ, P.E.	3			
	CITY ENGINEER: CRISTINA ORTEGA CASTAÑEIRAS, P.E.	2	2023-11-15	60% DESIGN MILESTONE	
		1	2023-04-17	30% DESIGN MILESTONE	
NO.	DATE	REVISION	APP'D BY		

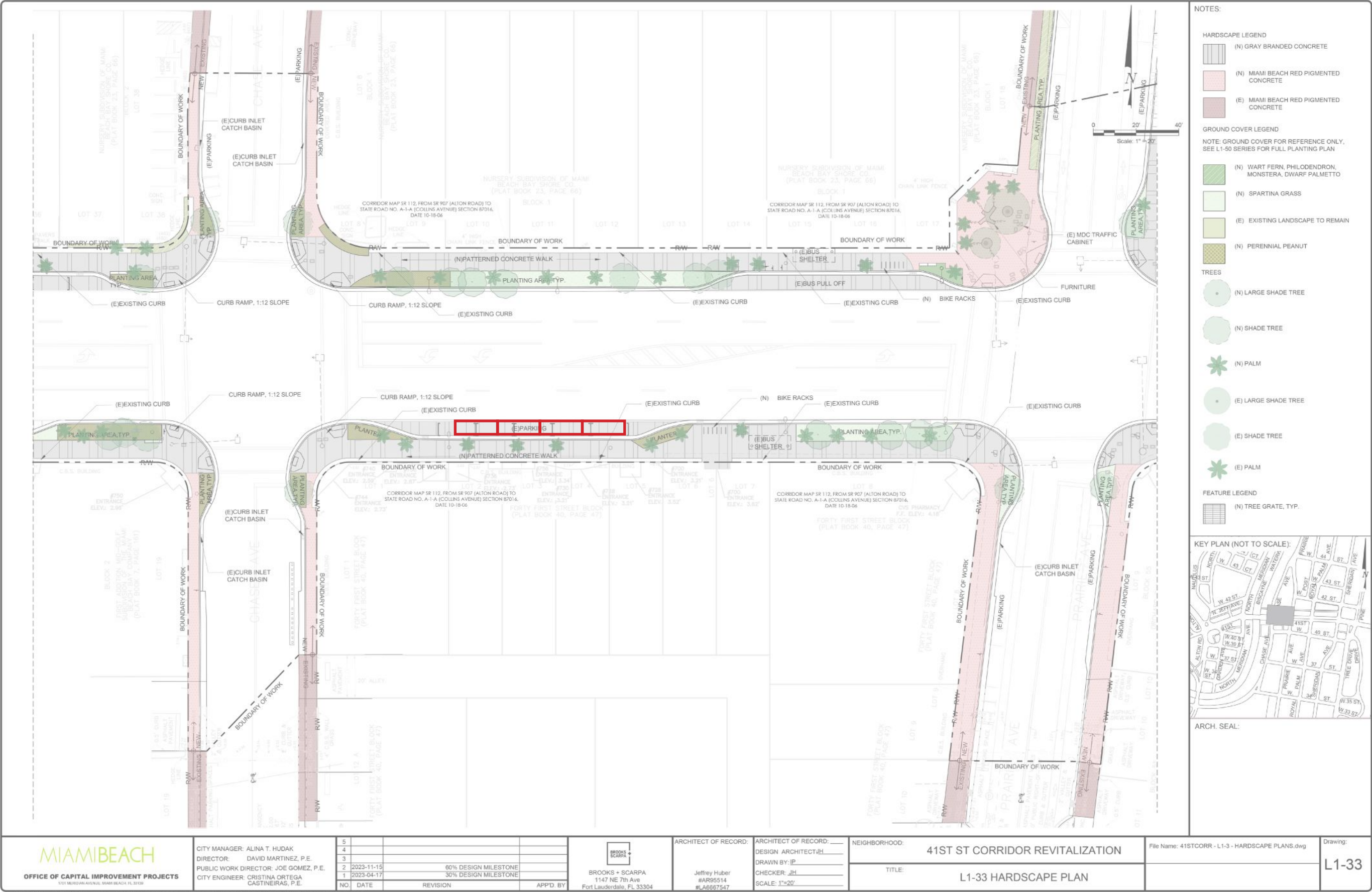
**BROOKS + SCARPA**  
1147 NE 7th Ave  
Fort Lauderdale, FL 33304

ARCHITECT OF RECORD:  
DESIGN ARCHITECT: JH  
DRAWN BY: JP  
CHECKER: JH  
SCALE: 1"=20'  
Jeffrey Huber  
#A965514  
#LA6667547

NEIGHBORHOOD:  
  
**41ST ST CORRIDOR REVITALIZATION**  
  
TITLE:  
  
**L1-33 HARDSCAPE PLAN**

File Name: 41STCORR - L1-3 - HARDSCAPE PLANS.dwg  
Drawing:  
**L1-33**

CURRENT DESIGN - PRAIRIE AVE.



CURRENT DESIGN - MID BLOCK CROSSING BEFORE ROYAL PALM AVE.



**NOTES:**

**HARDSCAPE LEGEND**

- (N) GRAY BRANDED CONCRETE
- (N) MIAMI BEACH RED PIGMENTED CONCRETE
- (E) MIAMI BEACH RED PIGMENTED CONCRETE

**GROUND COVER LEGEND**

NOTE: GROUND COVER FOR REFERENCE ONLY. SEE L1-50 SERIES FOR FULL PLANTING PLAN

- (N) WART FERN, PHILODENDRON, MONSTERA, DWARF PALMETTO
- (N) SPARTINA GRASS
- (E) EXISTING LANDSCAPE TO REMAIN
- (N) PERENNIAL PEANUT

**TREES**

- (N) LARGE SHADE TREE
- (N) SHADE TREE
- (N) PALM
- (E) LARGE SHADE TREE
- (E) SHADE TREE
- (E) PALM

**FEATURE LEGEND**

- (N) TREE GRATE, TYP.

**KEY PLAN (NOT TO SCALE):**

ARCH. SEAL:

CURRENT DESIGN - MID BLOCK CROSSING BEFORE SHERIDAN AVE.



THIS SPACE RESERVED FOR PROJECT MILESTONE

CURRENT DESIGN - MID BLOCK CROSSING BEFORE SHERIDAN AVE.



EXISTING



Existing Mid-Block Crossing



PROPOSED  
AECOM



Mid-Block Crossing





CURRENT DESIGN - PINE TREE DRIVE AND HENRY LEIBMAN SQUARE



CURRENT DESIGN - PINE TREE DRIVE AND HENRY LEIBMAN SQUARE







