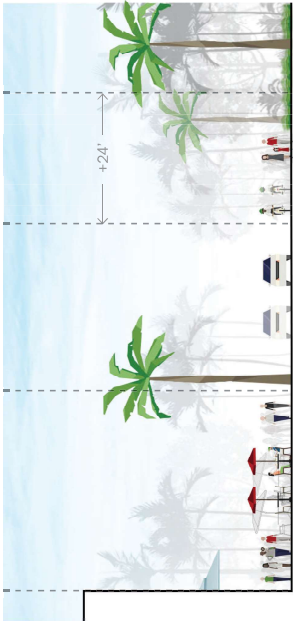


| OCEAN DRIVE CONCEPTS - OPTION 2

3.5.3 PROPOSED PARK + ONE WAY LIMITED ACCESS STREET



WALK 10'	SEATING 22'	PLANT 8'	CURB SIDE 8'	AUTO 10'	BIKE 10'	WALK 15'	LUMMUS PARK
86' ROW +/-							



This option is similar in character to option 1, but it proposes the narrow design shape for the pedestrian and bicycle paths. It also includes a dedicated space for the street. This street should be designed as an adjacent vehicle movement, pedestrian and bicycle movement. It also includes a dedicated space for the street. It also includes a dedicated space for the street.

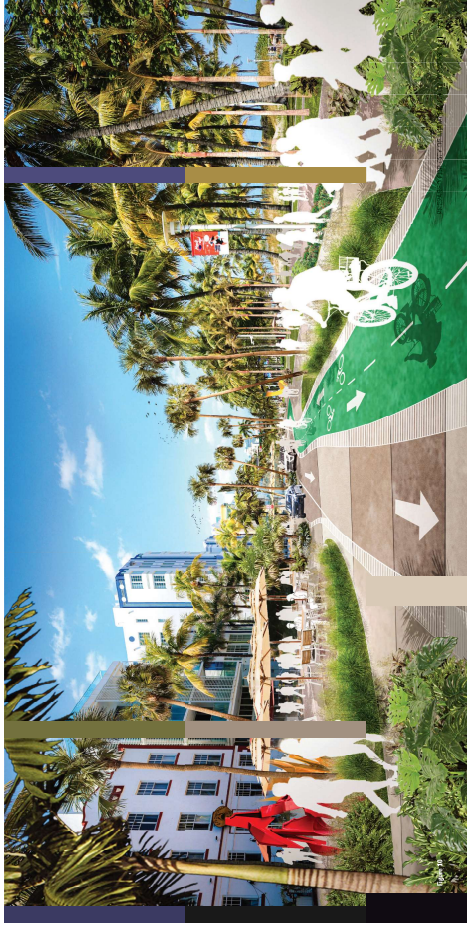


Exhibit B