

# Community Charrette

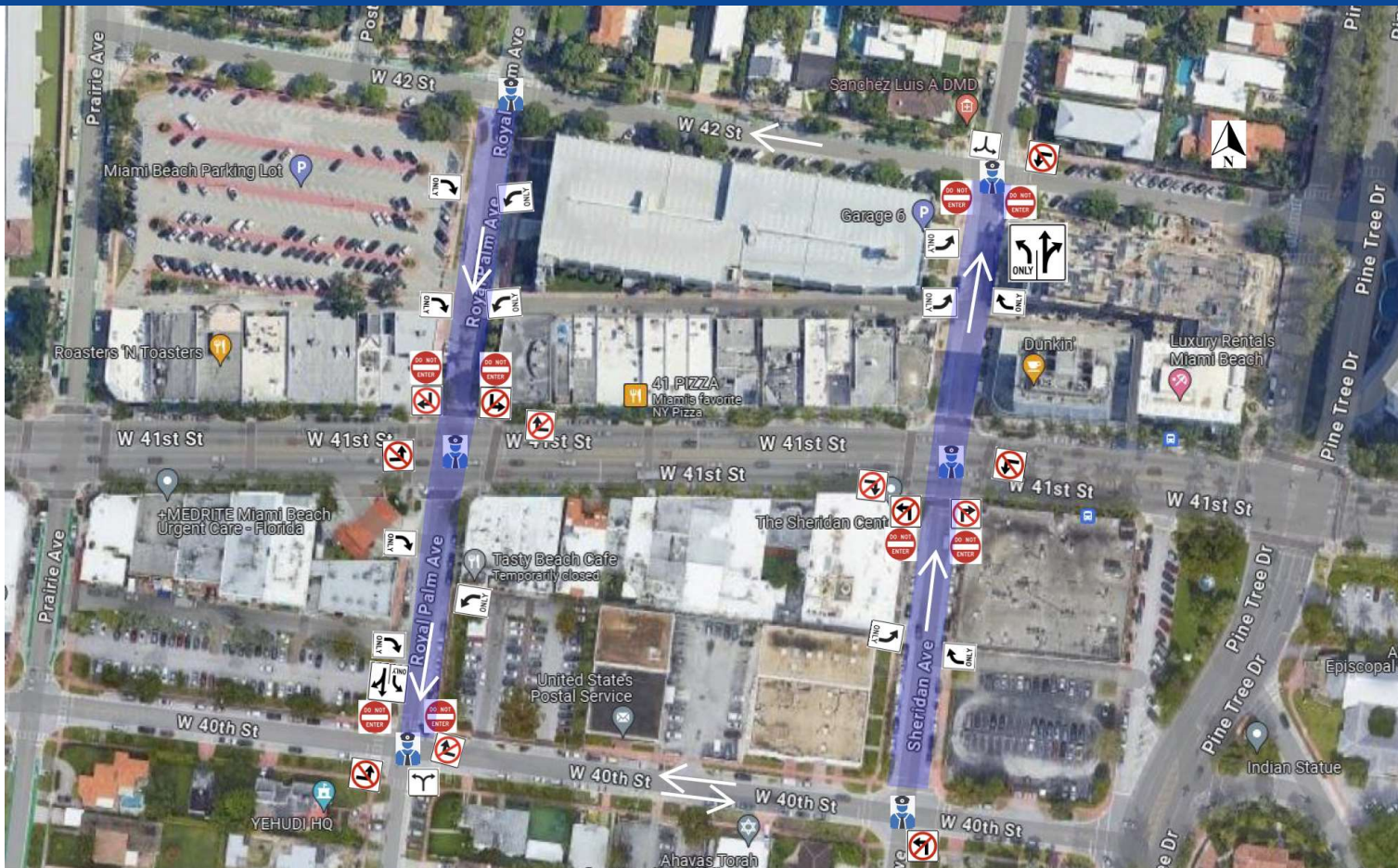
## Traffic Re-Circulation Pilot Program

May 7, 2024

MIAMIBEACH



## OPTION 1: CREATE ONE-WAY PAIR (SHERIDAN AVE NB & ROYAL PALM AVE SB)



## OPTION 1: CREATE ONE-WAY PAIR (SHERIDAN AVE NB & ROYAL PALM AVE SB)

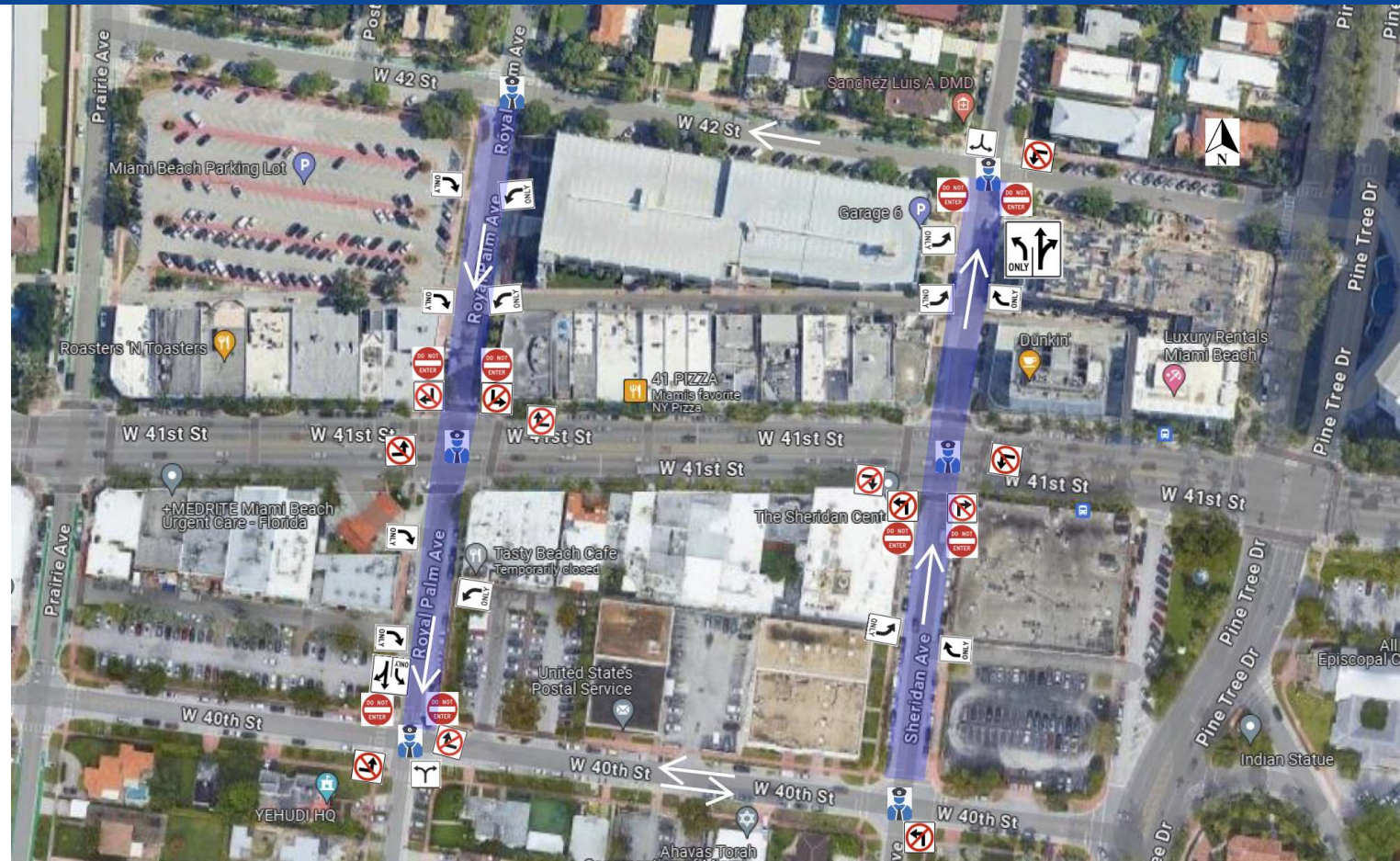
- Sheridan Ave: One-Way NB
  - Prohibit NB Left and Right Turns onto 41 St
  - Prohibit NB Left Turn onto 40 St
- Royal Palm Ave: One-Way SB
  - Prohibit SB Left and Right Turns onto 41 St
- Pilot Limits: 40 St – 42 St
- Pilot Hours: 3:30PM – 7PM

### Advantages

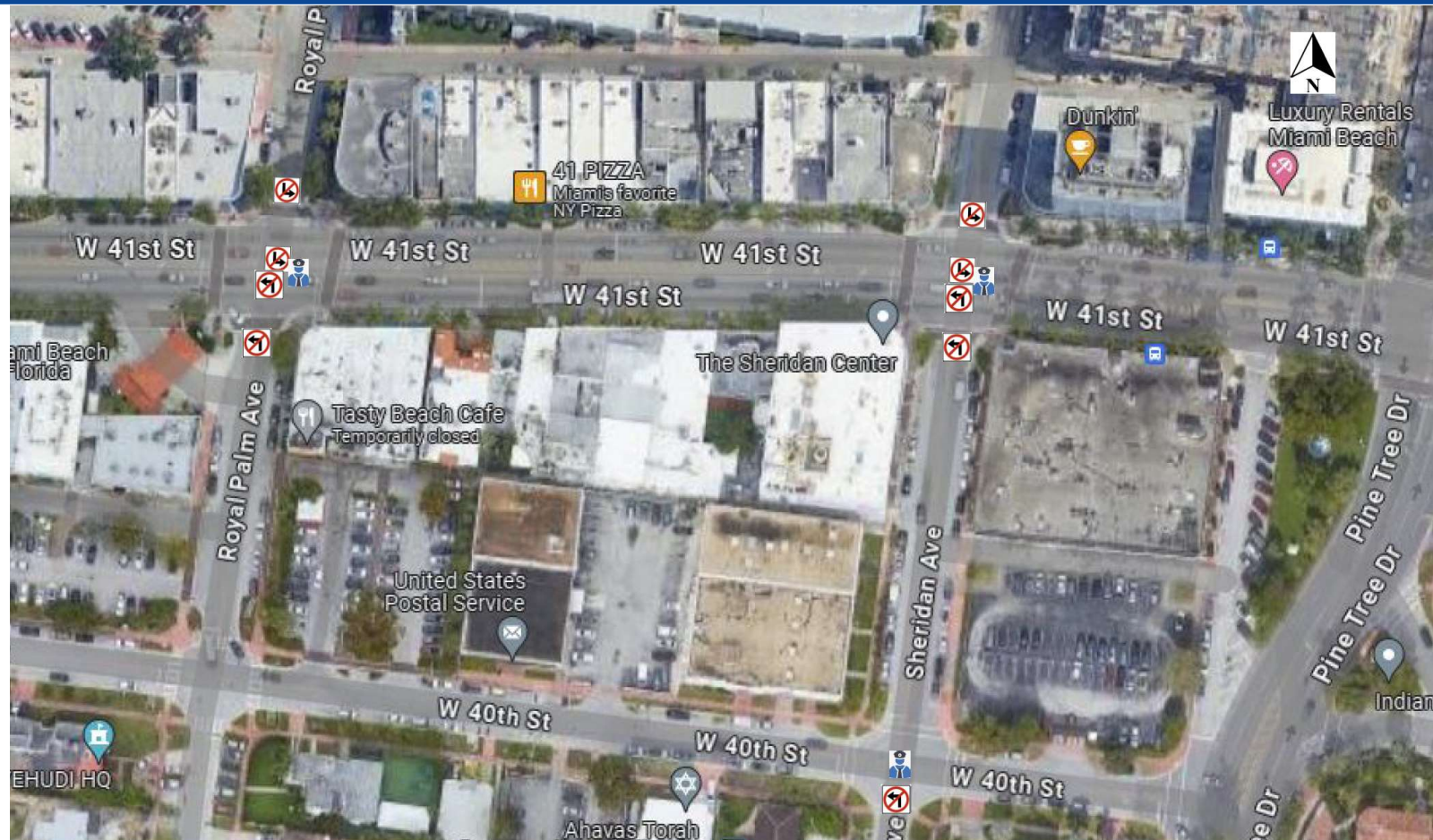
- Follows rules of the road
  - NB on the right and SB on the left
- Two lanes in same direction
  - Increases capacity for NB and SB

### Disadvantages

- On-street parking prohibited during pilot hours
  - E side of Royal Pam Ave and W side of Sheridan Ave
- Requires Miami-Dade County Approval



## OPTION 2: MAINTAIN TWO-WAY TRAFFIC/PROHIBIT NB & SB LEFT TURNS ONTO 41 ST



## OPTION 2: MAINTAIN TWO-WAY TRAFFIC/PROHIBIT NB & SB LEFT TURNS ONTO 41 ST

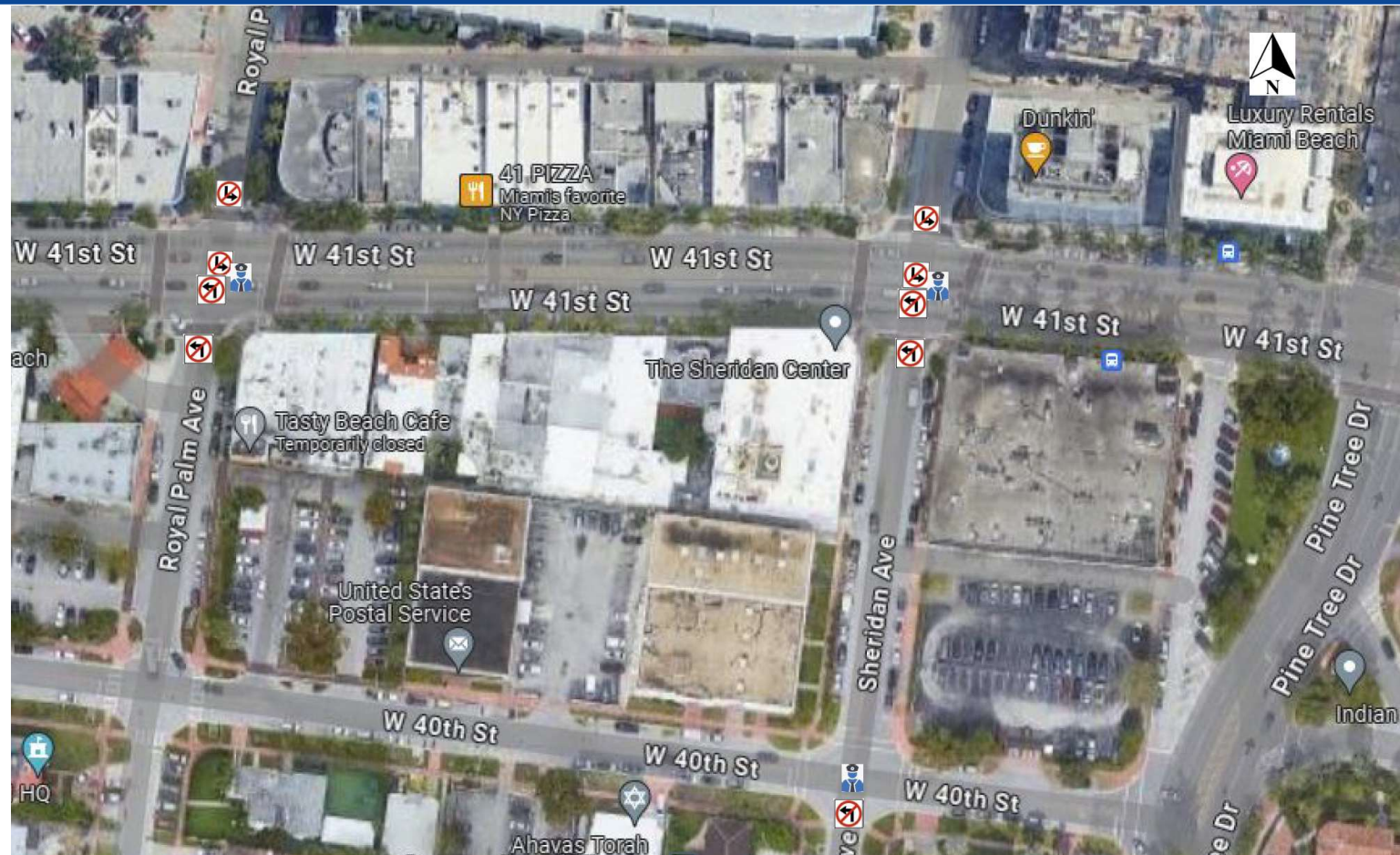
- Sheridan Ave: Two-Way
  - Prohibit NB and SB Left Turns onto 41 St
  - Prohibit NB Left Turn onto 40 St
- Royal Palm Ave: Two-Way
  - Prohibit NB and SB Left Turns onto 41 St
- Pilot Limits: 40 St – 41 St
- Pilot Hours: 3:30PM – 7PM

### Advantages

- Ease of implementation
- Less impact to the neighborhood
- No impact to on-street parking
- May not require Miami-Dade County approval

### Disadvantages

- Does not increase capacity NB and SB



# STAY IN TOUCH



Download the presentation and re-watch the meeting.



Sign up to receive project updates via email.



Provide feedback within our **two-week** comment period, which ends **May 22, 2024**.

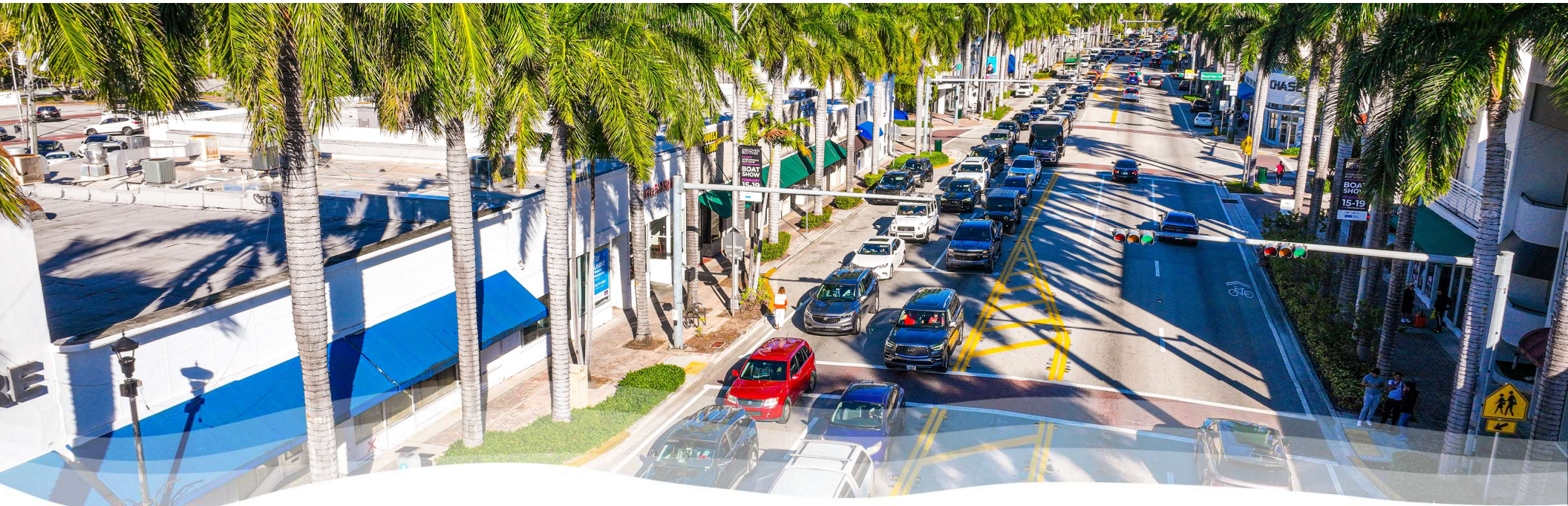
## CONTACT

Kevin Pulido, Neighborhood Affairs Director  
KevinPulido@miamibeachfl.gov

Gabriella Gonzalez, Neighborhood Affairs Coordinator  
GabriellaGonzalez@miamibeachfl.gov

Scan the QR code to receive project updates.





**Thank you**