

# LIGHTING AND SIDEWALK IMPROVEMENTS

**CITY OF MIAMI BEACH**

OCEAN DRIVE

Calvin, Giordano & Associates, Inc.



CITY OF MIAMI BEACH

OCEAN DRIVE | LIGHTING AND SIDEWALK IMPROVEMENTS

PUBLIC MEETING  
MARCH 2025

## 2 Concurrent projects:

### IMPLEMENTING THE ADCD VISION PLAN (OCEAN DR. CORRIDOR AND LUMMUS PARK ENHANCEMENT PROJECT):

- sometimes referred to as the 'long-term' project
- "a complex, multi-year endeavor that involves comprehensive design, permitting and construction"
- the 'long-term' project requires evaluations of all 3 ADCD options for Ocean Drive to FIRST obtain approval from BOTH Miami-Dade County and the Florida Dept of Transportation on the selected traffic configuration
- once the traffic studies are completed and agency approvals are obtained, site design and site engineering can begin

### LIGHTING AND SIDEWALK IMPROVEMENTS:

- sometimes referred to as the 'short-term' project
- replacement of existing sidewalks and lighting improvements
- focuses on the importance of lighting and sidewalk improvements to enhance safety, accessibility, and aesthetics, and seeks to advance these enhancements





# Objectives - 'Short Term' project

1. **Replace existing sidewalks**  
no impacts to traffic geometries, drainage patterns, or underground infrastructure
2. **Propose options for lighting along the west side of Ocean Drive**



# Design Considerations

1. Enhance Safety and Accessibility
2. Cost of Implementation
3. Cost of Maintenance
4. Ease of Repair and Longevity
5. Sensitivity to Local Businesses



CITY OF MIAMI BEACH

OCEAN DRIVE | LIGHTING AND SIDEWALK IMPROVEMENTS

PUBLIC MEETING  
MARCH 2025

# Agenda

1. Discuss Paving Strategies and Approaches
2. Discuss the 'pros' and 'cons' of the various hardscape alternatives
3. Showcase proposed design options
4. Discuss lighting strategy for Ocean Drive



# Basis of Design

# 01



CITY OF MIAMI BEACH

OCEAN DRIVE | LIGHTING AND SIDEWALK IMPROVEMENTS

PUBLIC MEETING  
MARCH 2025

# Paving Strategies and Approaches

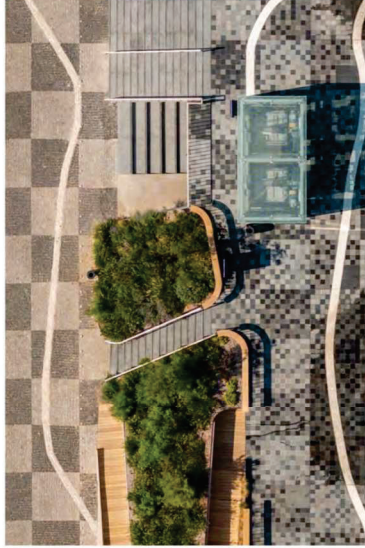
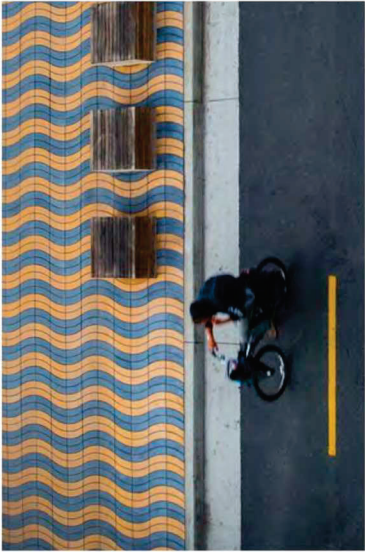


CITY OF MIAMI BEACH

OCEAN DRIVE | LIGHTING AND SIDEWALK IMPROVEMENTS

PUBLIC MEETING  
MARCH 2025





# The Value of Paving Design



CITY OF MIAMI BEACH

OCEAN DRIVE | LIGHTING AND SIDEWALK IMPROVEMENTS

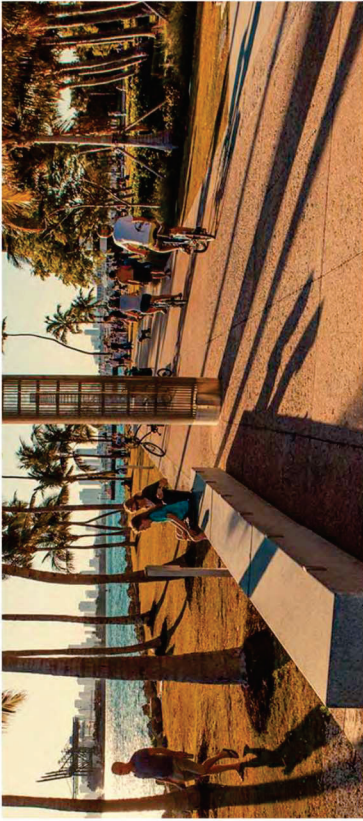
PUBLIC MEETING  
MARCH 2025

8

01 MODULE

BASIS OF DESIGN





# Paving Precedents - Local



CITY OF MIAMI BEACH

OCEAN DRIVE | LIGHTING AND SIDEWALK IMPROVEMENTS

PUBLIC MEETING  
MARCH 2025

9

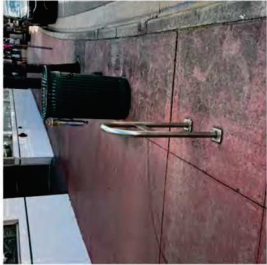
01 MODULE

BASIS OF DESIGN





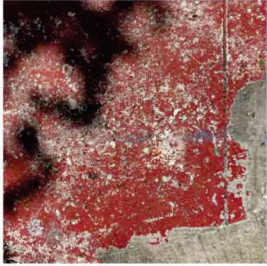
INTEGRAL COLOR  
RED CONCRETE



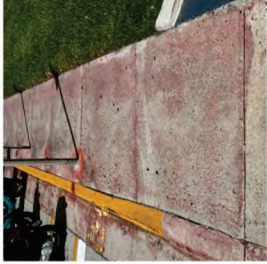
INTEGRAL COLOR  
RED CONCRETE



INTEGRAL COLOR RED  
CONCRETE WITH EXPOSED  
SHELL AGGREGATE



NATURAL COLOR CONCRETE  
WITH SURFACE PAINT



NATURAL COLOR CONCRETE  
WITH SURFACE STAIN



NATURAL COLOR CONCRETE  
SALT FINISH



COBBLESTONE PAVER



INTEGRAL COLORED  
CONCRETE PAVER



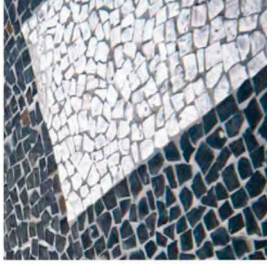
INTEGRAL COLORED  
CONCRETE PAVER



INTEGRAL COLORED  
CONCRETE PAVER



SQUARE GRANITE PAVER



PIEDRA PORTUGUESA

# Paving Precedents - Local



# 'Pros' and 'Cons' of the various alternatives



CITY OF MIAMI BEACH

OCEAN DRIVE | LIGHTING AND SIDEWALK IMPROVEMENTS

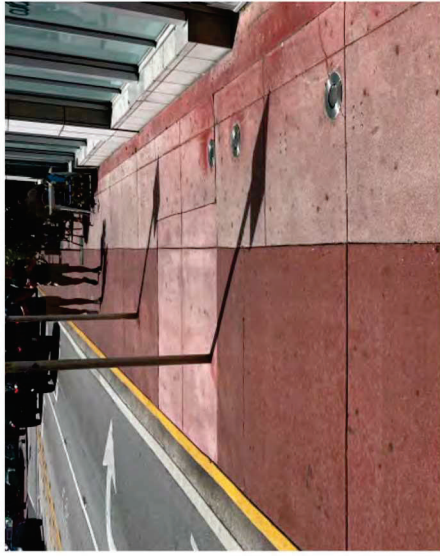
PUBLIC MEETING  
MARCH 2025

11

01 MODULE

BASIS OF DESIGN

INTEGRAL COLORED CONCRETE



- Most widely used material
- Can be colored (Integral color preferred)
- Easy to repair and replace
- Easy to maintain via pressure washing
- Most inexpensive of all options
- Relatively fast to install
- Color will always fade, resulting in a patchwork when replaced
- Designs are subject to limitations of formwork

EXPOSED SHELL CONCRETE



- Refined application and appearance
- Can be colored (Integral color preferred)
- Relatively easy to maintain via pressure washing
- Requires skilled installers
- More difficult to repair and replace while keeping a seamless quality
- Color will always fade, resulting in a patchwork when replaced
- More prone to dirt accumulation
- Increased costs of installation

## Paving Alternatives



CITY OF MIAMI BEACH

OCEAN DRIVE | LIGHTING AND SIDEWALK IMPROVEMENTS

PUBLIC MEETING  
MARCH 2025

12

01 MODULE

BASIS OF DESIGN



## CONCRETE PAVERS



- Widely used and proven material throughout the City
- Available with exposed shell finish and in a variety of colors
- Relatively easy to maintain via pressure washing
- Generally repairs aren't needed for the first 5 years
- Can accommodate intricate designs
- Can be easily repaired by City Staff
- Color will fade, resulting in a patchwork when replaced
- Excessively intricate designs can result in many 'cut' pieces
- Intricate designs need more maintenance

## COBBLESTONE



- Relatively easy to maintain via pressure washing
- Unique character that is more traditional & historic-leaning
- Design options are more restrictive
- Material requires a lot of maintenance
- Staff has noted that it is very difficult to get repairs to be seamless
- Requires greater skill for repair

## PEDRA PORTUGUESA



- Intricate patterns can be achieved by varying the sizes of the stones
- Colors are limited to what can be supplied
- Very difficult to repair and replace
- Requires highly-skilled installers to achieve seamless look
- Concerns about slip-and-fall due to the polished finish on the stone
- Large grout joints show patchwork where repairs are done
- Difficulty to achieve a smooth, flat surface for tables and chairs
- Very expensive



CITY OF MIAMI BEACH

OCEAN DRIVE | LIGHTING AND SIDEWALK IMPROVEMENTS

PUBLIC MEETING

MARCH 2025

13



## CONCRETE PAVERS



- Widely used and proven material throughout the City
- Available with exposed shell finish and in a variety of colors
- Relatively easy to maintain via pressure washing
- Generally repairs aren't needed for the first 5 years
- Can accommodate intricate designs
- Can be easily repaired by City Staff
- *Color will fade, resulting in a patchwork when replaced*
- *Excessively intricate designs can result in many 'cut' pieces*
- *Intricate designs need more maintenance*



## Material Recommendation



CITY OF MIAMI BEACH

OCEAN DRIVE | LIGHTING AND SIDEWALK IMPROVEMENTS

PUBLIC MEETING

MARCH 2025

14

01 MODULE

BASIS OF DESIGN

# Proposed Alternatives

# 02

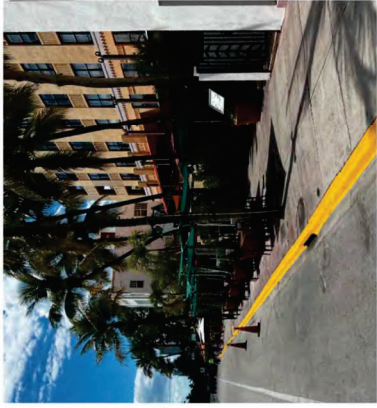


CITY OF MIAMI BEACH

OCEAN DRIVE | LIGHTING AND SIDEWALK IMPROVEMENTS

PUBLIC MEETING  
MARCH 2025





# Existing sidewalks

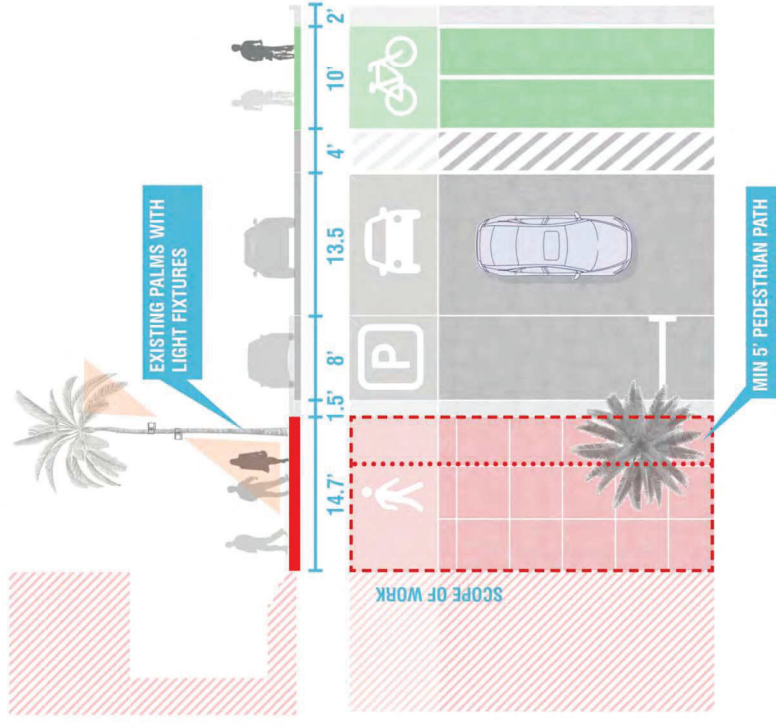


CITY OF MIAMI BEACH

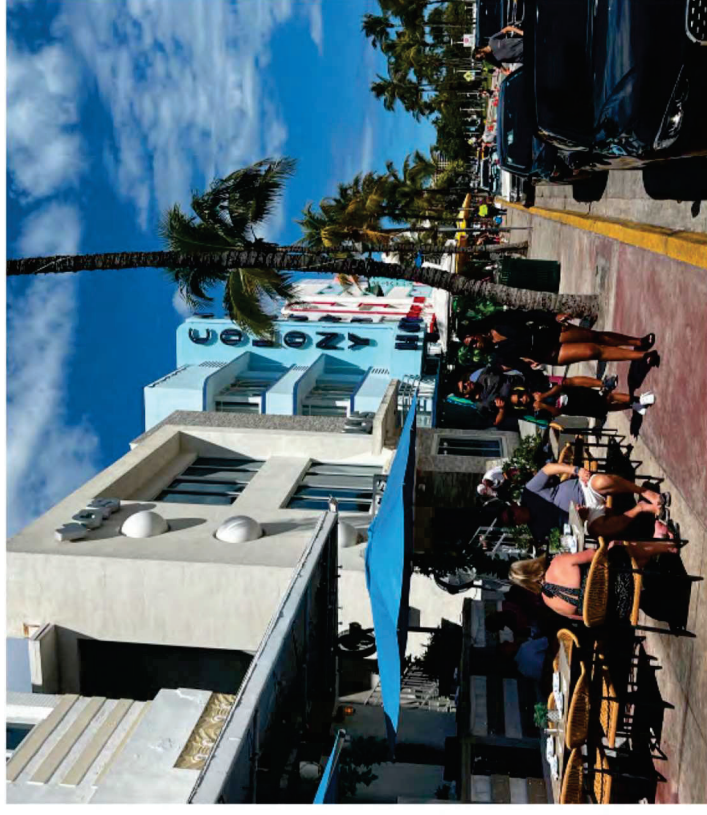
OCEAN DRIVE | LIGHTING AND SIDEWALK IMPROVEMENTS

PUBLIC MEETING  
MARCH 2025

EXISTING SECTION



EXISTING CONDITION



## Existing sidewalks



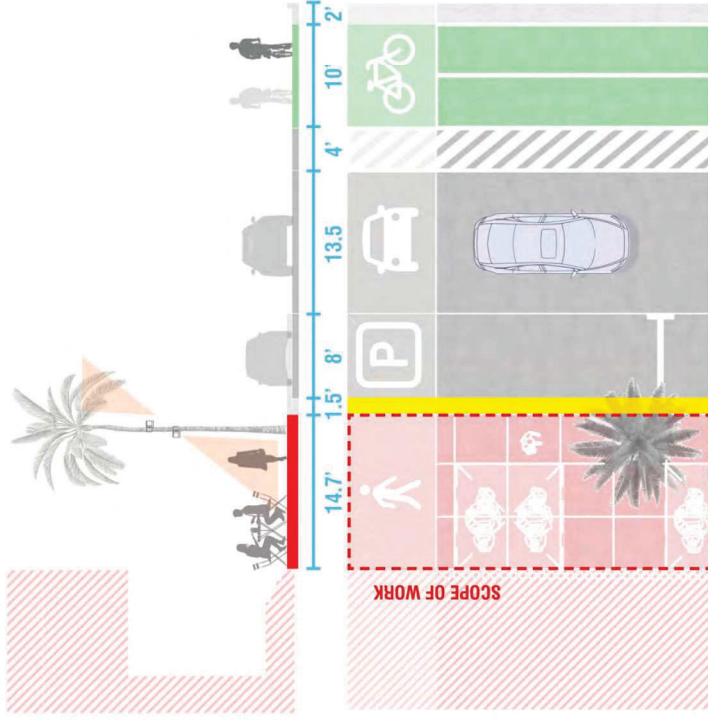
CITY OF MIAMI BEACH

OCEAN DRIVE | LIGHTING AND SIDEWALK IMPROVEMENTS

PUBLIC MEETING  
MARCH 2025



EXISTING SECTION



EXISTING CONDITION



## Existing sidewalks



CITY OF MIAMI BEACH

OCEAN DRIVE | LIGHTING AND SIDEWALK IMPROVEMENTS

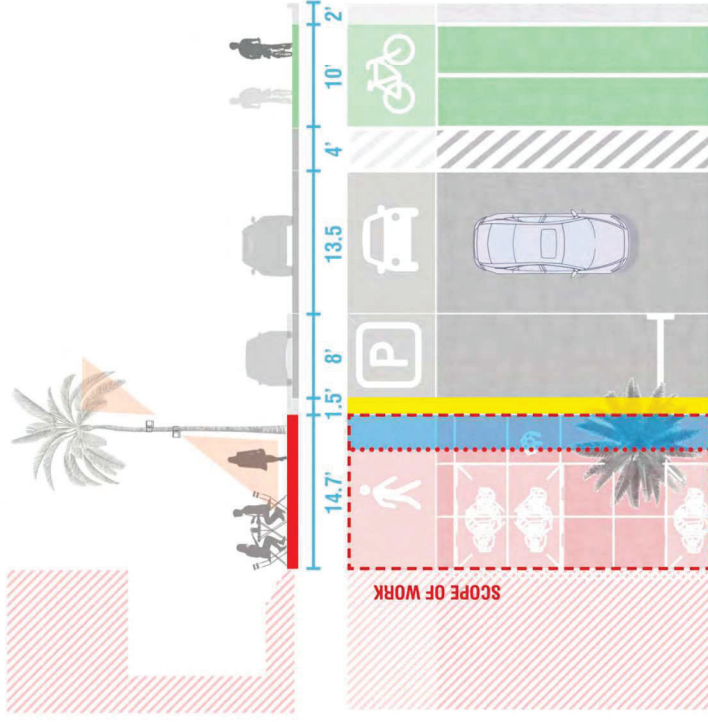
PUBLIC MEETING  
MARCH 2025

18

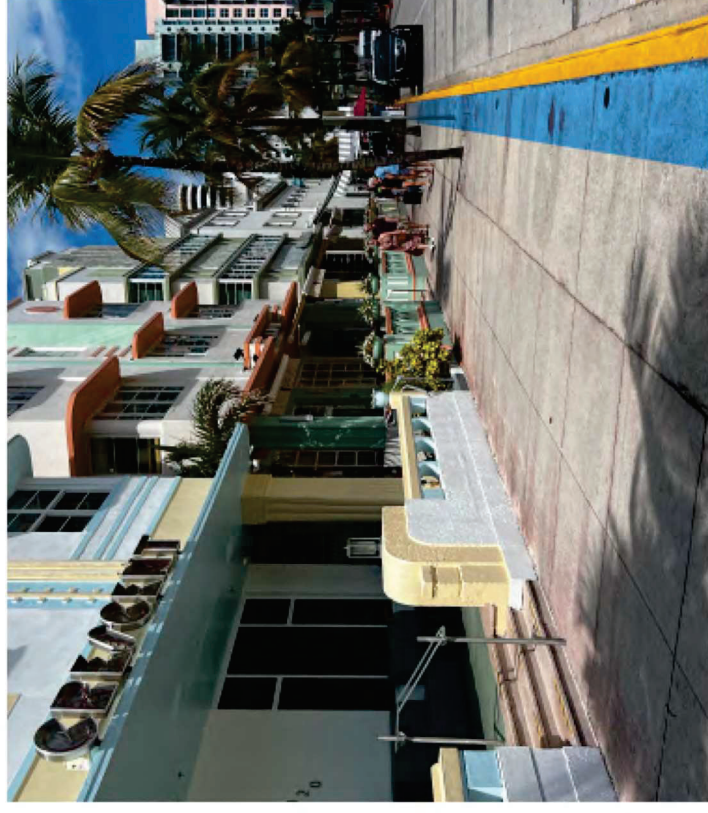
02MODULE

PROPOSED ALTERNATIVES

EXISTING SECTION



EXISTING CONDITION



## Existing sidewalks



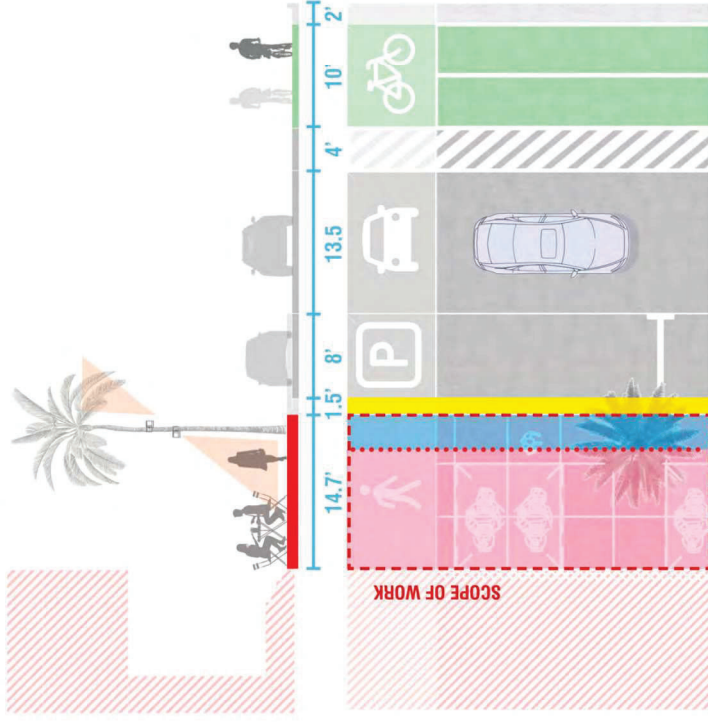
CITY OF MIAMI BEACH

OCEAN DRIVE | LIGHTING AND SIDEWALK IMPROVEMENTS

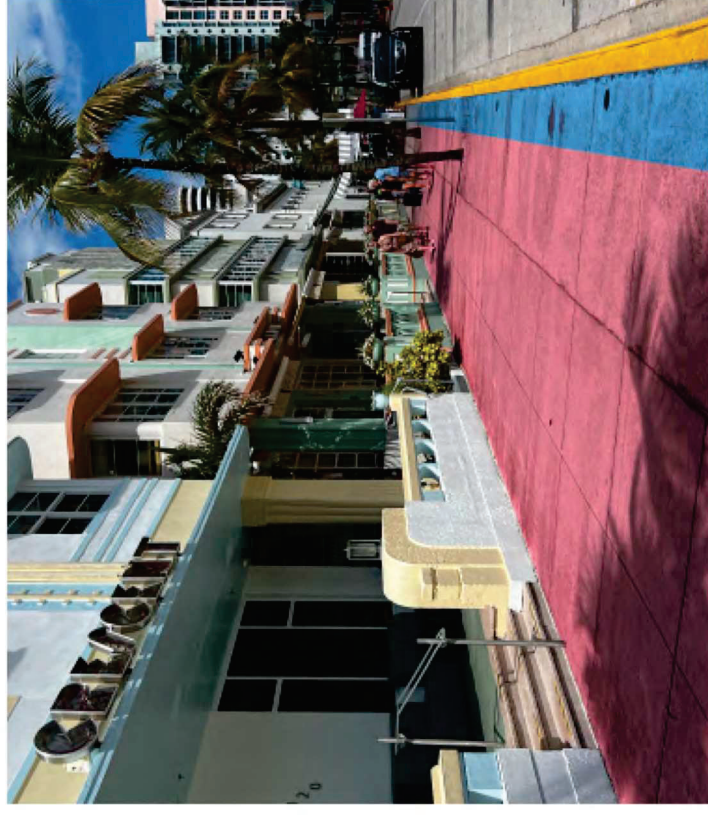
PUBLIC MEETING  
MARCH 2025



EXISTING SECTION



EXISTING CONDITION



## Existing sidewalks



CITY OF MIAMI BEACH

OCEAN DRIVE | LIGHTING AND SIDEWALK IMPROVEMENTS

PUBLIC MEETING  
MARCH 2025

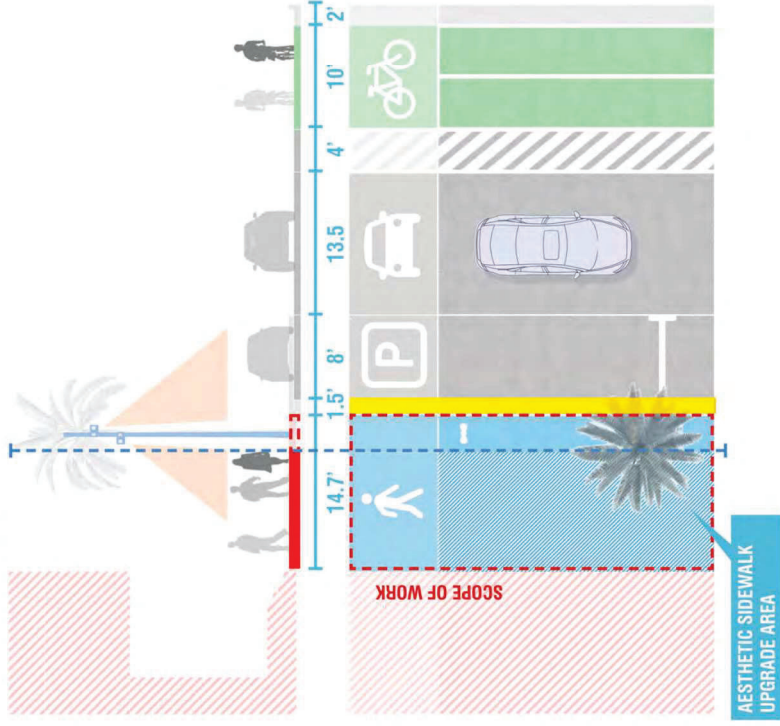
20

02MODULE

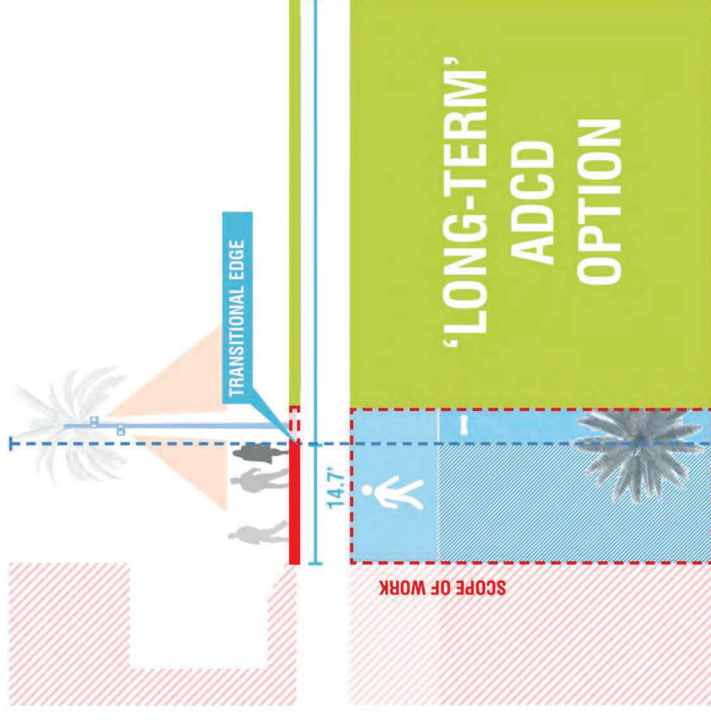
PROPOSED ALTERNATIVES



PROPOSED SECTION



PROPOSED SECTION



## Proposed sidewalks

PROPOSED ALTERNATIVES

02MODULE



CITY OF MIAMI BEACH

OCEAN DRIVE | LIGHTING AND SIDEWALK IMPROVEMENTS

PUBLIC MEETING  
MARCH 2025

# SINGLE BLOCK DIAGRAM



PROPOSED ALTERNATIVES

02MODULE

22

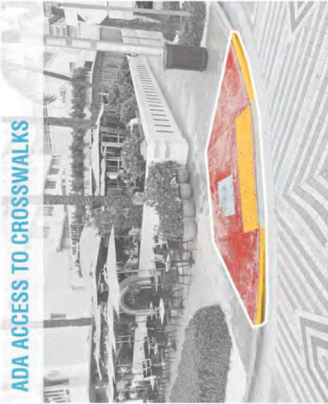
PUBLIC MEETING  
MARCH 2025

OCEAN DRIVE | LIGHTING AND SIDEWALK IMPROVEMENTS



CITY OF MIAMI BEACH

ADA ACCESS TO CROSSWALKS



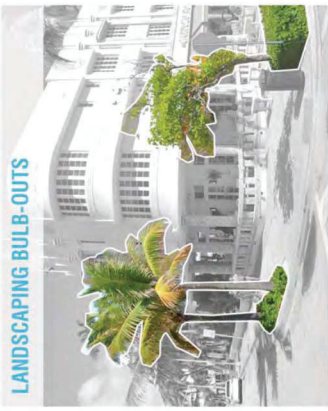
UTILITY POLES



VEHICULAR TRAFFIC SIGNALIZATION

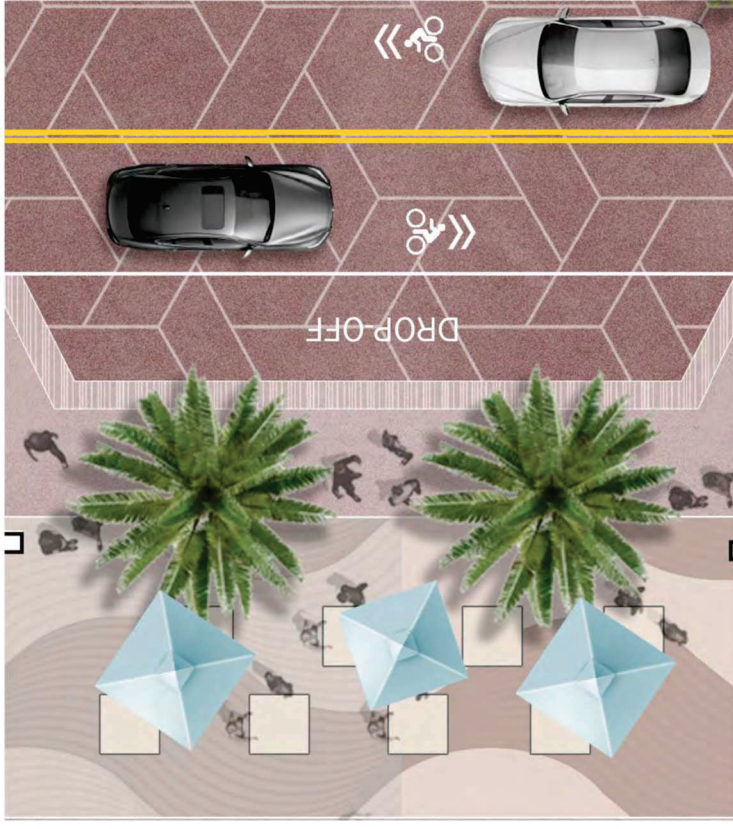
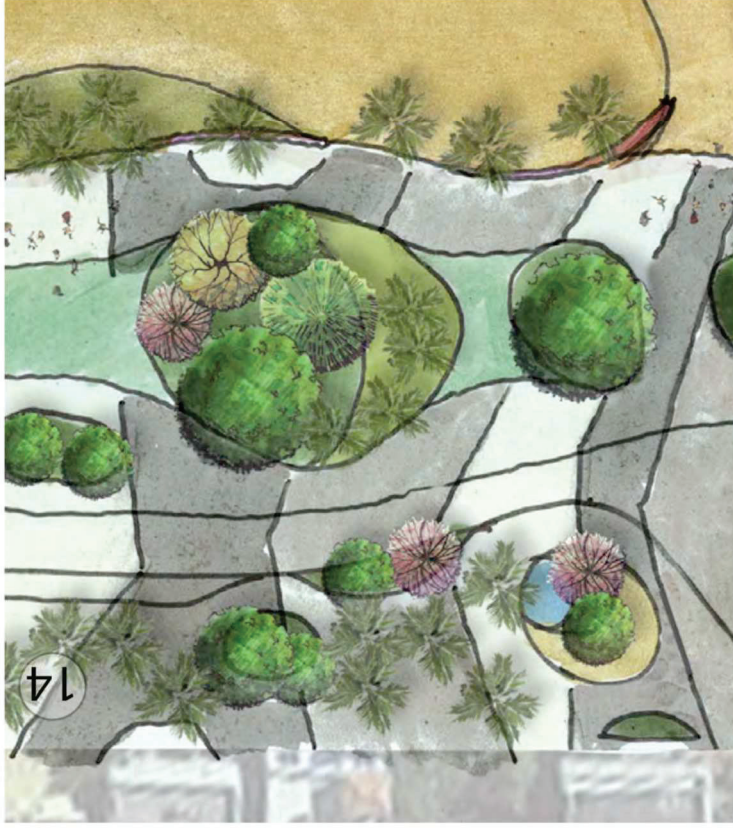


LANDSCAPING BULB-OUTS



## Typical corner condition





## ADCD Vision Plan - Paving



CITY OF MIAMI BEACH

OCEAN DRIVE | LIGHTING AND SIDEWALK IMPROVEMENTS

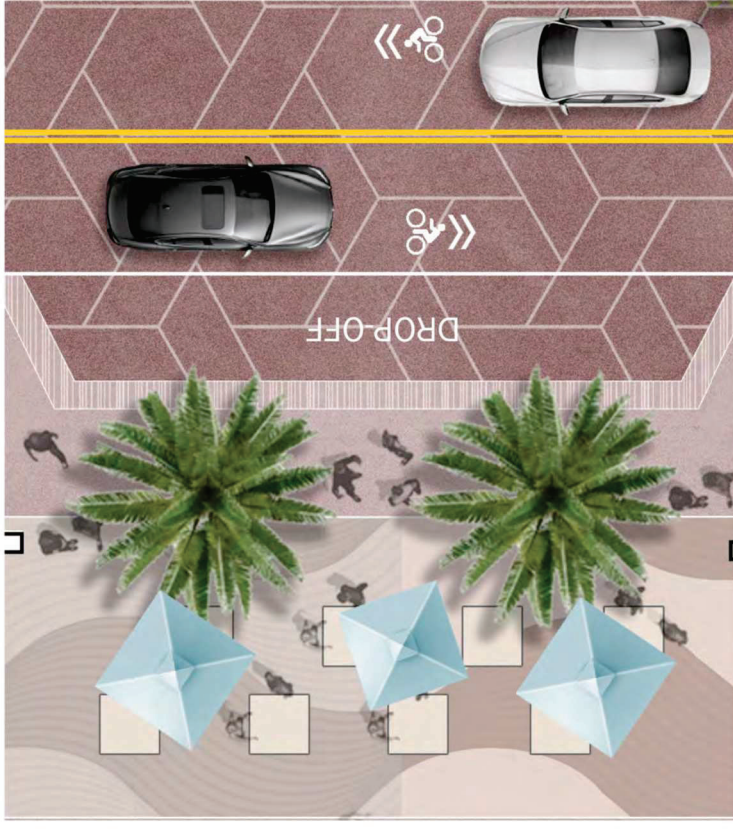
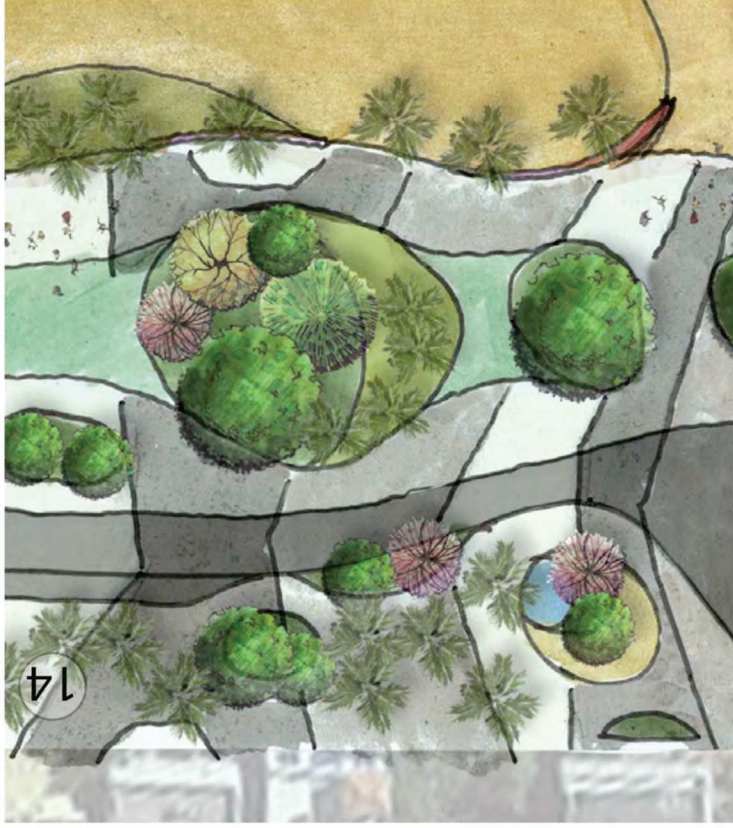
PUBLIC MEETING  
MARCH 2025

23

02MODULE

PROPOSED ALTERNATIVES





PROPOSED ALTERNATIVES

02MODULE

24

## ADCD Vision Plan - Paving



CITY OF MIAMI BEACH

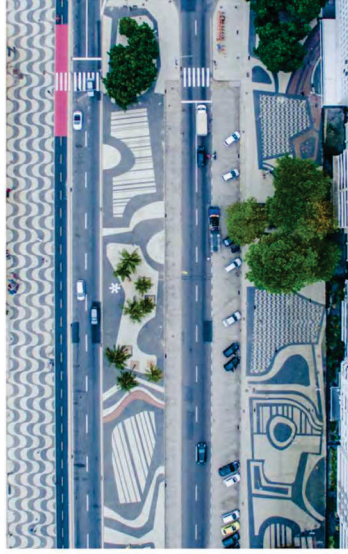
OCEAN DRIVE | LIGHTING AND SIDEWALK IMPROVEMENTS

PUBLIC MEETING

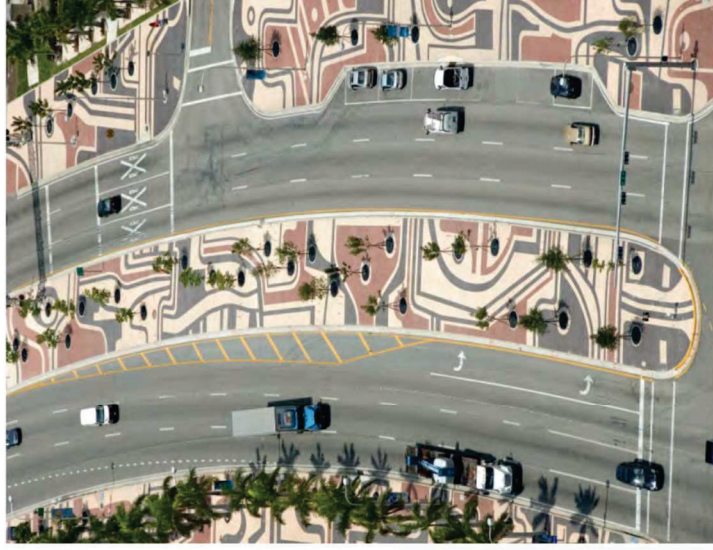
MARCH 2025



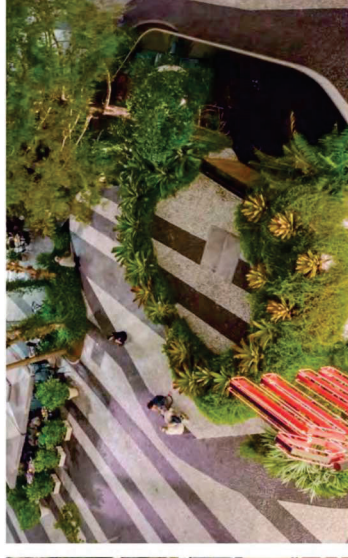
COPACABANA



BISCAYNE BOULEVARD



LINCOLN ROAD (1100 BLOCK)



ADCD MASTERPLAN



## Paving Precedents - Local



CITY OF MIAMI BEACH

OCEAN DRIVE | LIGHTING AND SIDEWALK IMPROVEMENTS

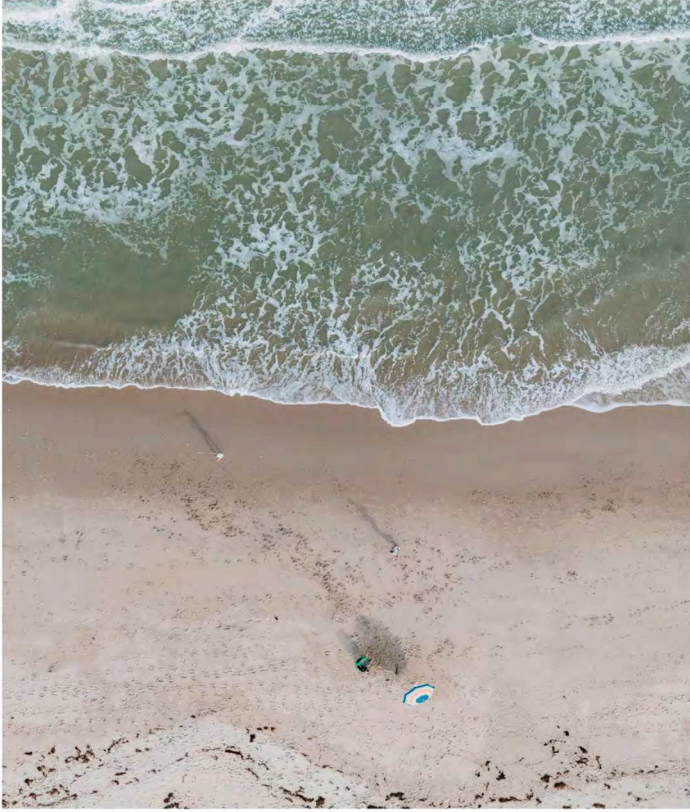
PUBLIC MEETING  
MARCH 2025

25

01 MODULE

BASIS OF DESIGN

ATLANTIC OCEAN



MIAMI BEACH ART DECO



## Design inspiration

PROPOSED ALTERNATIVES

02MODULE



CITY OF MIAMI BEACH

OCEAN DRIVE | LIGHTING AND SIDEWALK IMPROVEMENTS

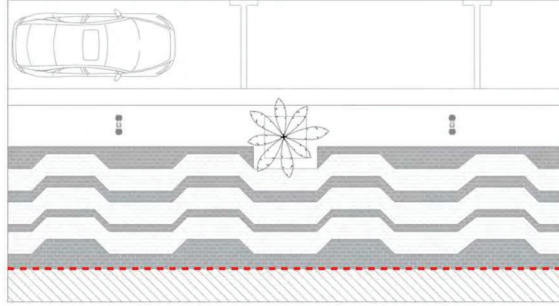
PUBLIC MEETING  
MARCH 2025





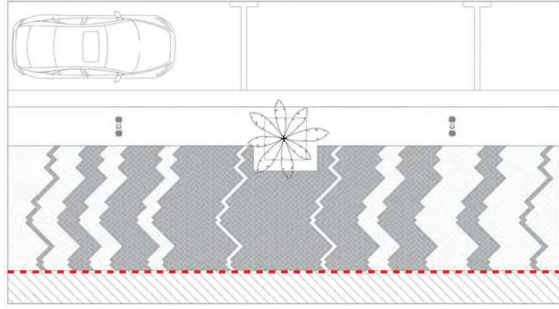
# Paving patterns modules

OPTION 01



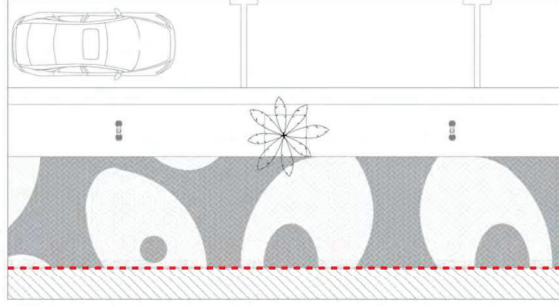
SOLDIER COURSE PATTERN

OPTION 02



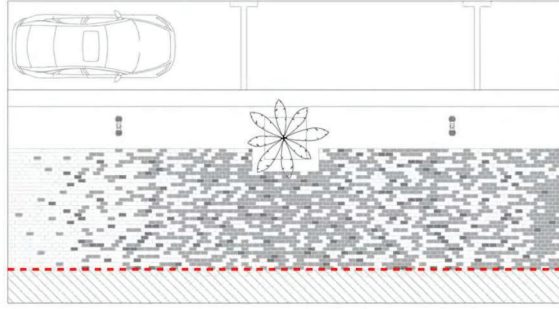
HERRINGBONE PATTERN

OPTION 03



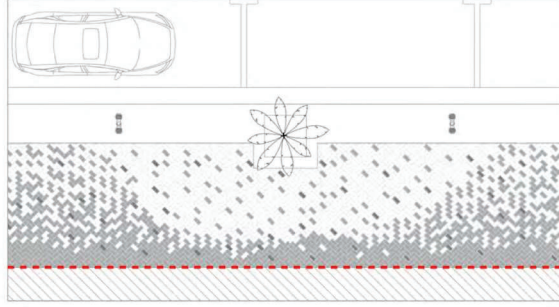
HERRINGBONE PATTERN

OPTION 04



SOLDIER COURSE RANDOMIZED

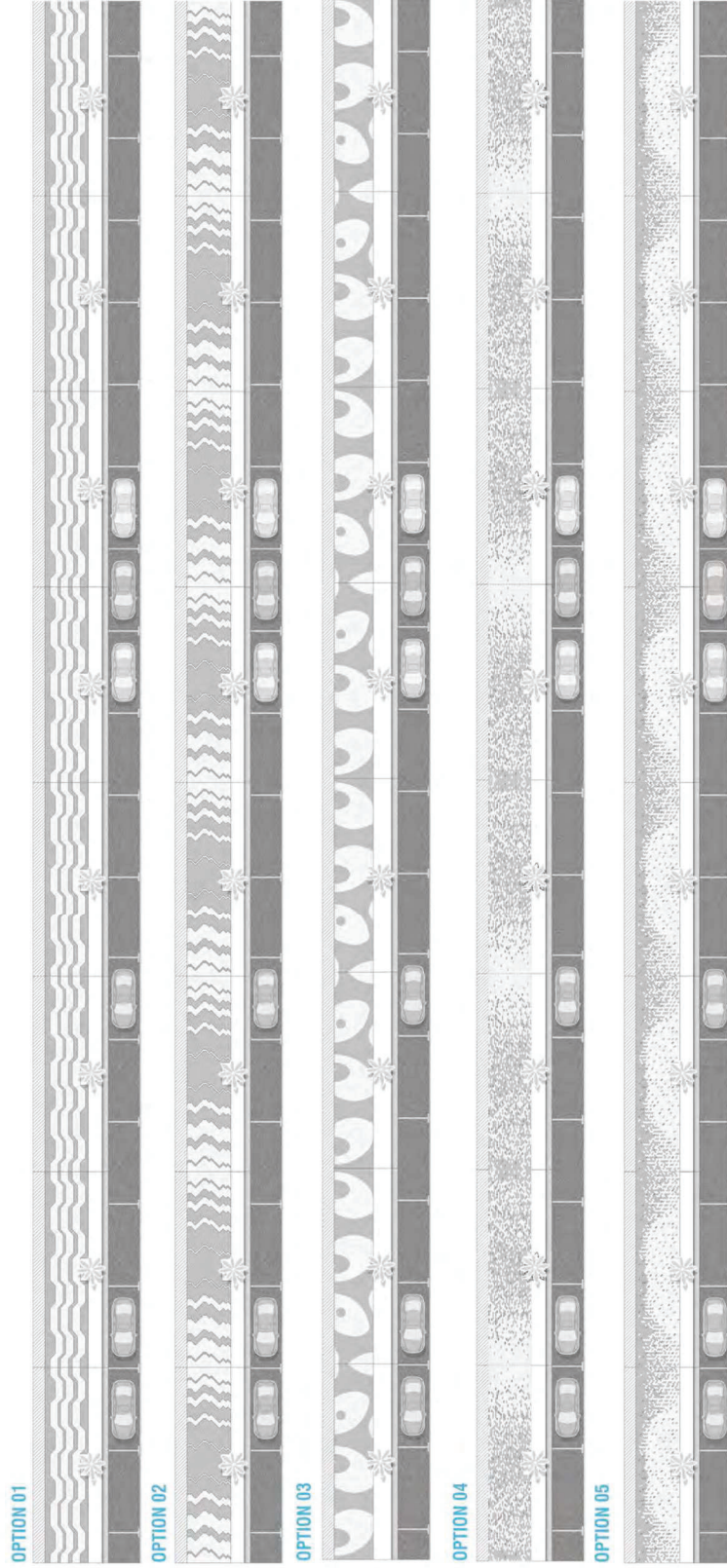
OPTION 05



HERRINGBONE PATTERN RANDOMIZED

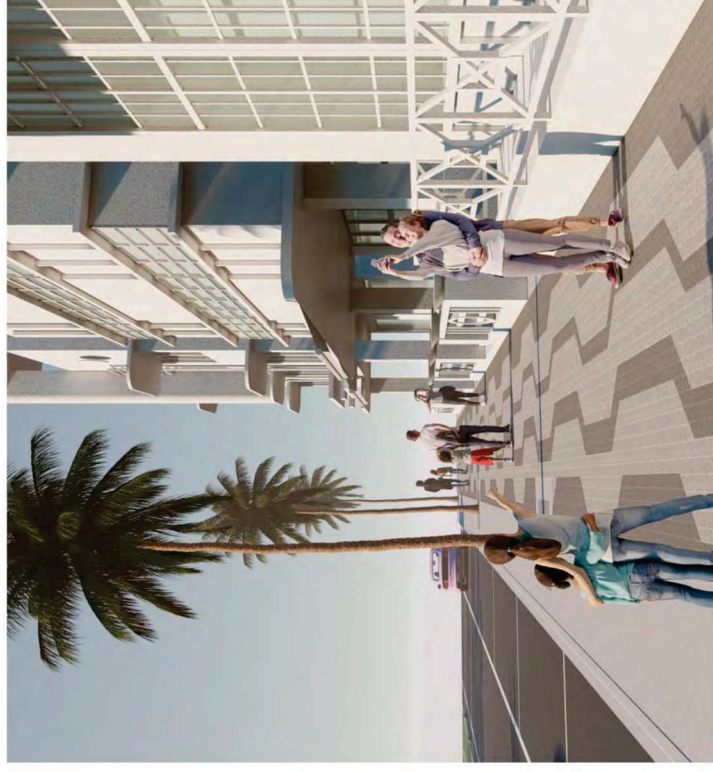
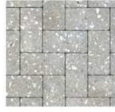


## Paving patterns modules





**OPTION 01 A**  
SOLDIER COURSE/ PAVERS 4"X8"



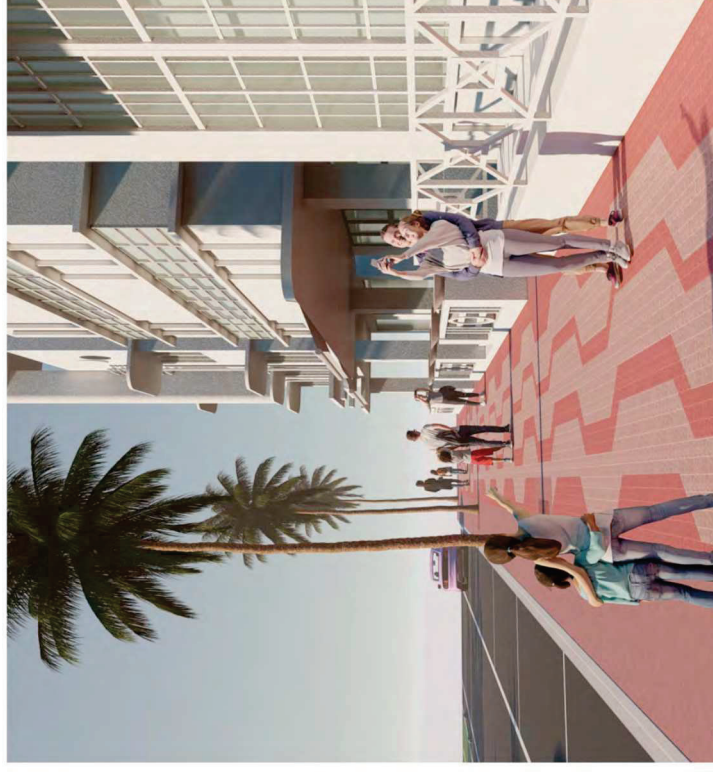
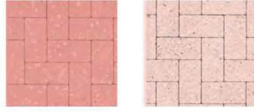
CITY OF MIAMI BEACH

OCEAN DRIVE | LIGHTING AND SIDEWALK IMPROVEMENTS

PUBLIC MEETING  
MARCH 2025



**OPTION 01 B**  
SOLDIER COURSE/ PAVERS 4"X8"



CITY OF MIAMI BEACH

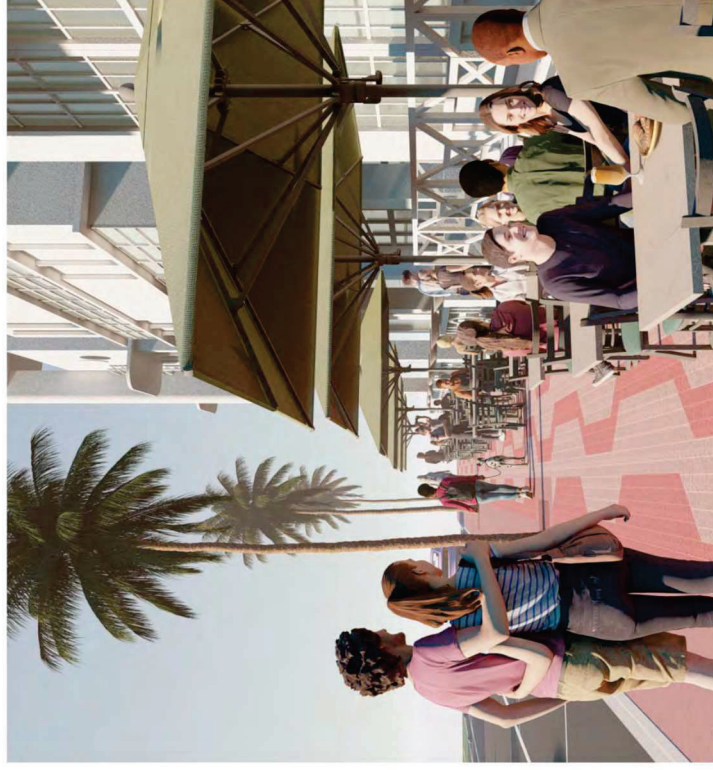
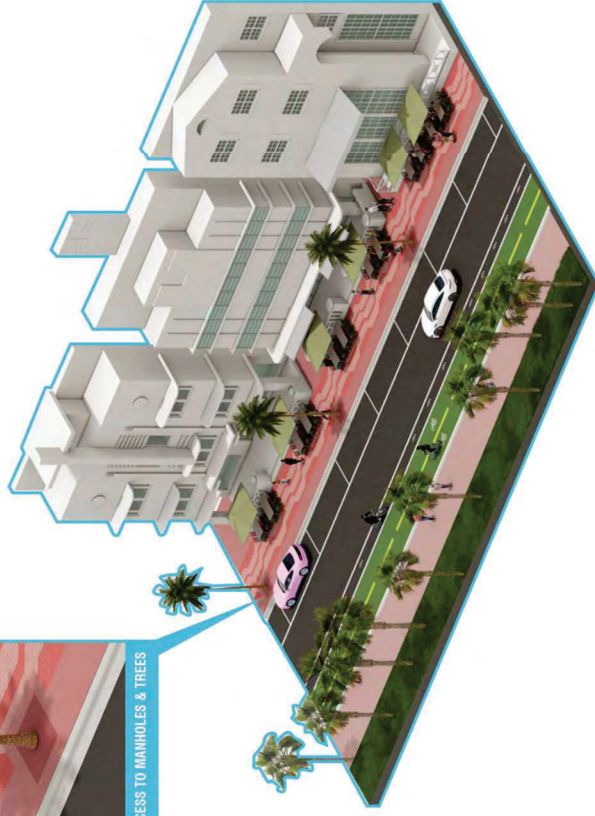
OCEAN DRIVE | LIGHTING AND SIDEWALK IMPROVEMENTS

PUBLIC MEETING  
MARCH 2025

**OPTION 01 SEATING**  
SOLDIER COURSE/ PAVERS 4"X8"



ACCESS TO MANHOLES & TREES



CITY OF MIAMI BEACH

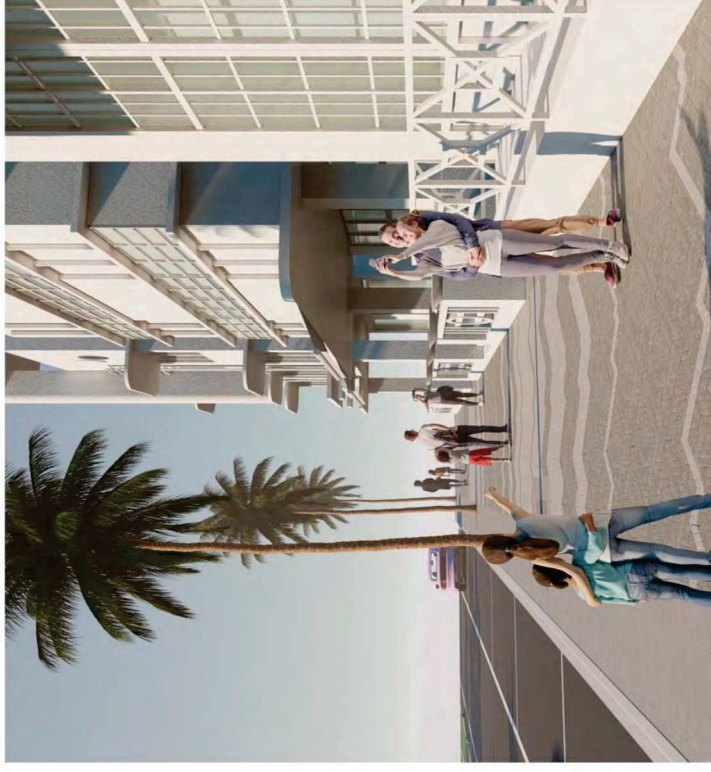
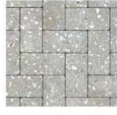
OCEAN DRIVE | LIGHTING AND SIDEWALK IMPROVEMENTS

PUBLIC MEETING  
MARCH 2025



## OPTION 02 A

HERRINGBONE PATTERN / PAVERS 4"X8"



CITY OF MIAMI BEACH

OCEAN DRIVE | LIGHTING AND SIDEWALK IMPROVEMENTS

PUBLIC MEETING  
MARCH 2025

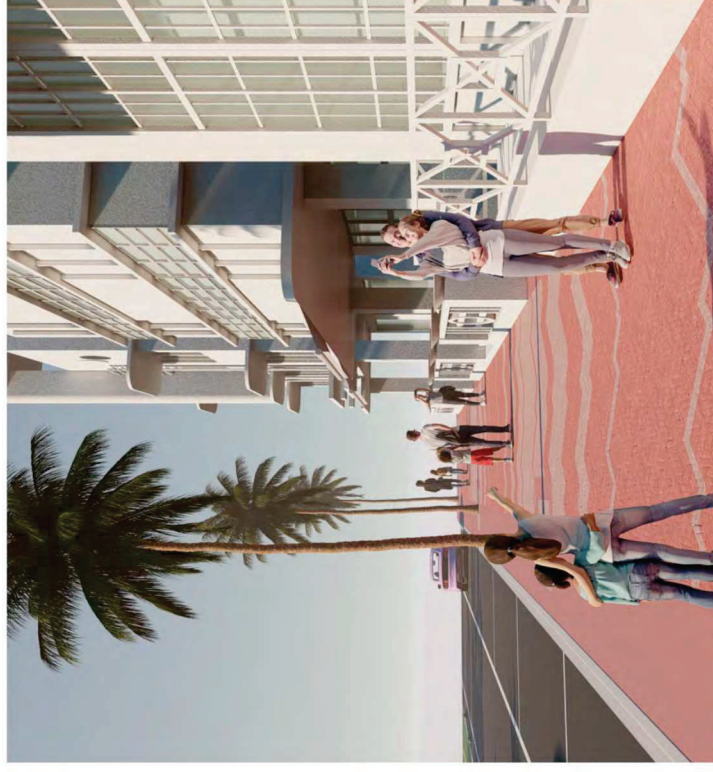
32

02MODULE

PROPOSED ALTERNATIVES



**OPTION 02 B**  
HERRINGBONE PATTERN/ PAVERS 4"X8"



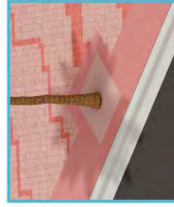
CITY OF MIAMI BEACH

OCEAN DRIVE | LIGHTING AND SIDEWALK IMPROVEMENTS

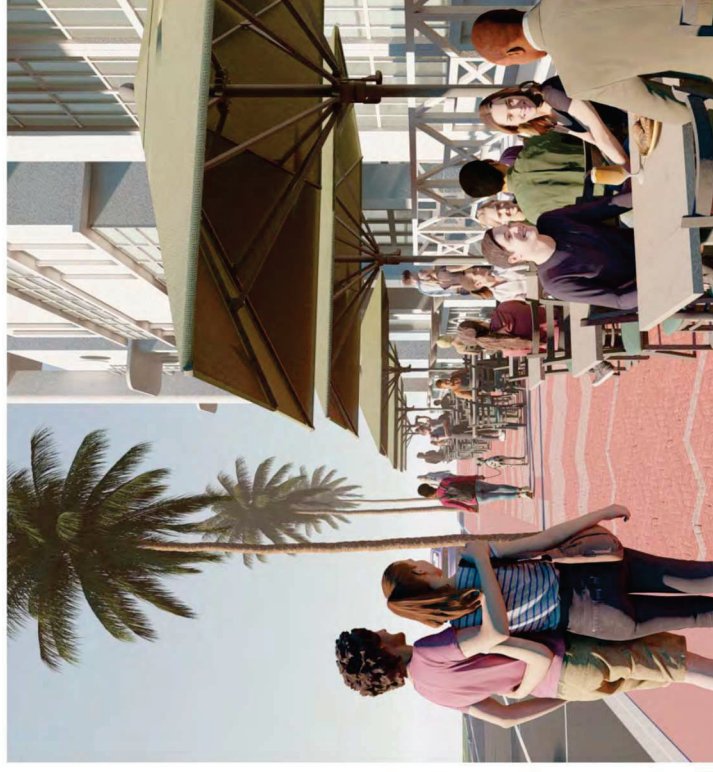
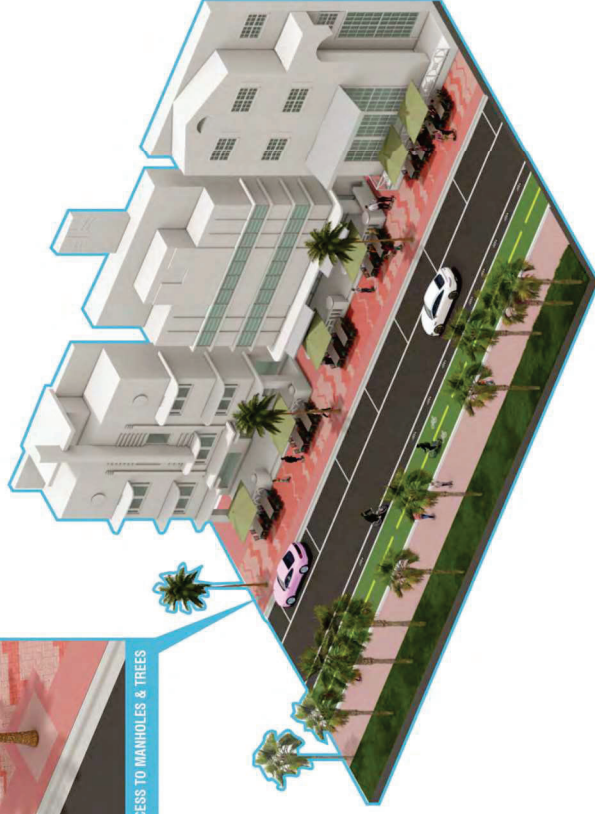
PUBLIC MEETING  
MARCH 2025

# OPTION 02 SEATING

HERRINGBONE PATTERN/ PAVERS 4"X8"



ACCESS TO MANHOLES & TREES



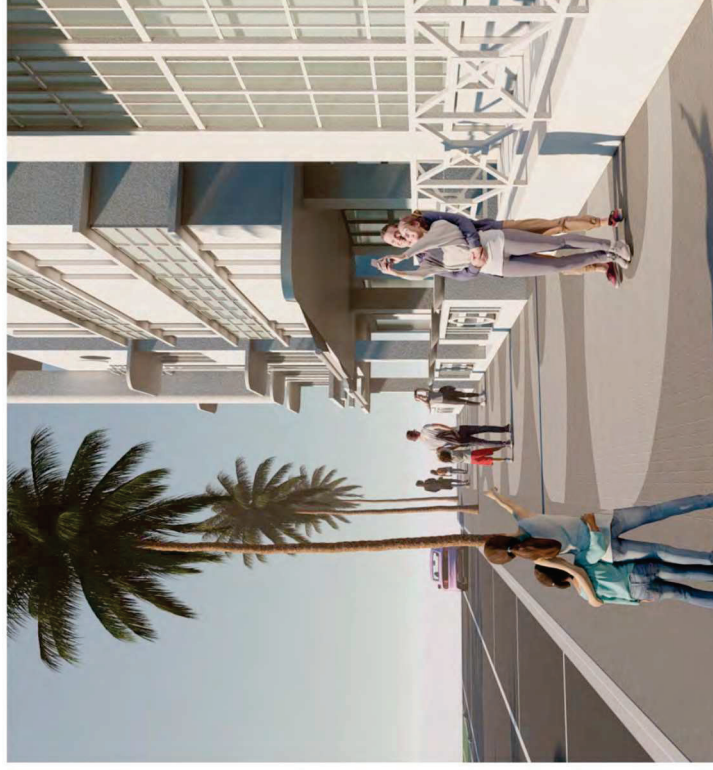
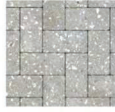
CITY OF MIAMI BEACH

OCEAN DRIVE | LIGHTING AND SIDEWALK IMPROVEMENTS

PUBLIC MEETING  
MARCH 2025



**OPTION 03 A**  
HERRINGBONE PATTERN / PAVERS 4"X8"



CITY OF MIAMI BEACH

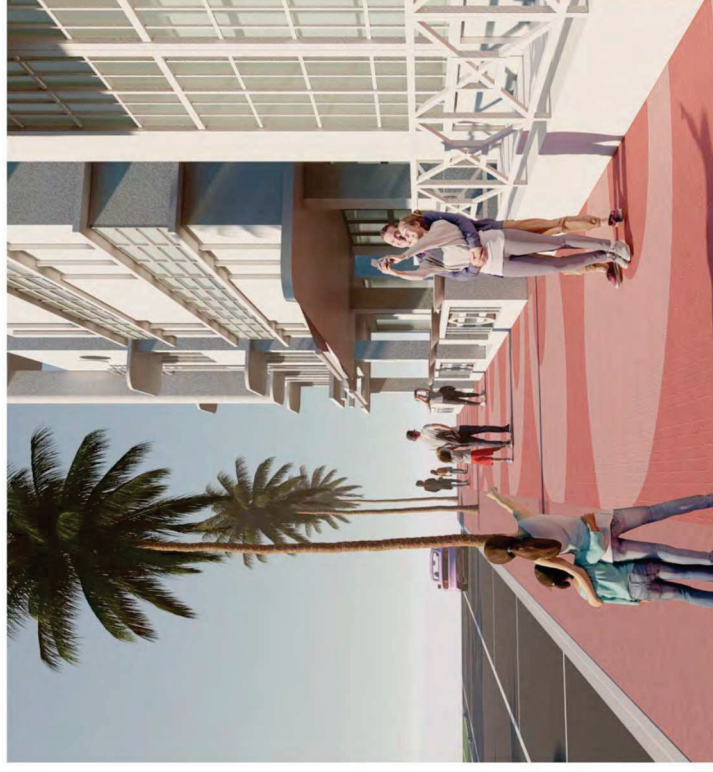
OCEAN DRIVE | LIGHTING AND SIDEWALK IMPROVEMENTS

PUBLIC MEETING  
MARCH 2025



### OPTION 03 B

HERRINGBONE PATTERN / PAVERS 4"X8"



CITY OF MIAMI BEACH

OCEAN DRIVE | LIGHTING AND SIDEWALK IMPROVEMENTS

PUBLIC MEETING  
MARCH 2025

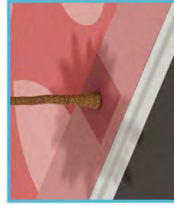
36

02MODULE

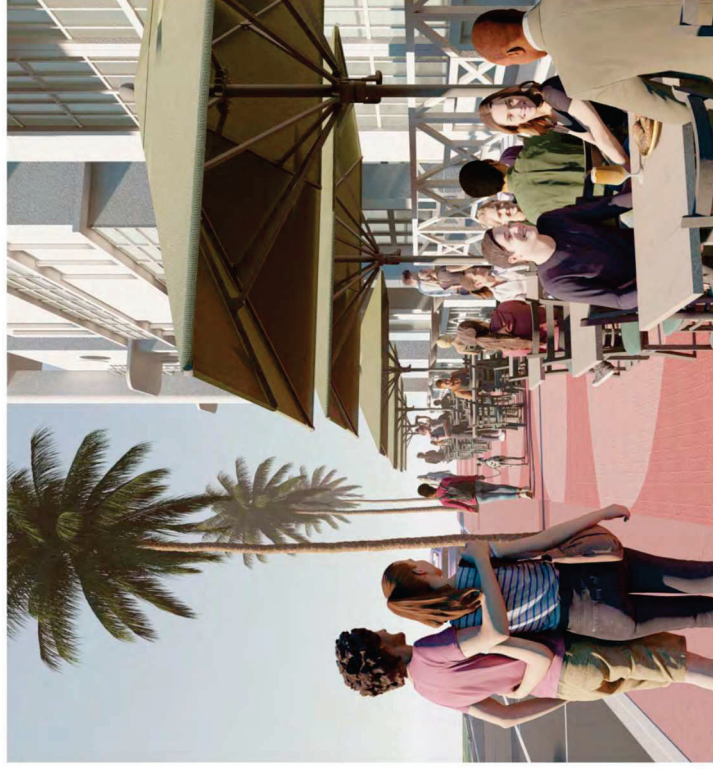
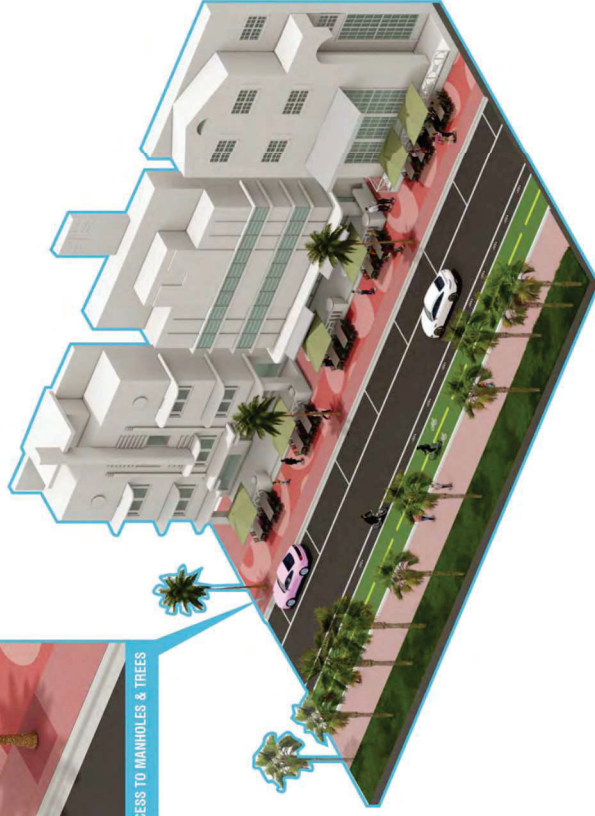
PROPOSED ALTERNATIVES

# OPTION 03 SEATING

HERRINGBONE PATTERN/ PAVERS 4"X8"



ACCESS TO MANHOLES & TREES



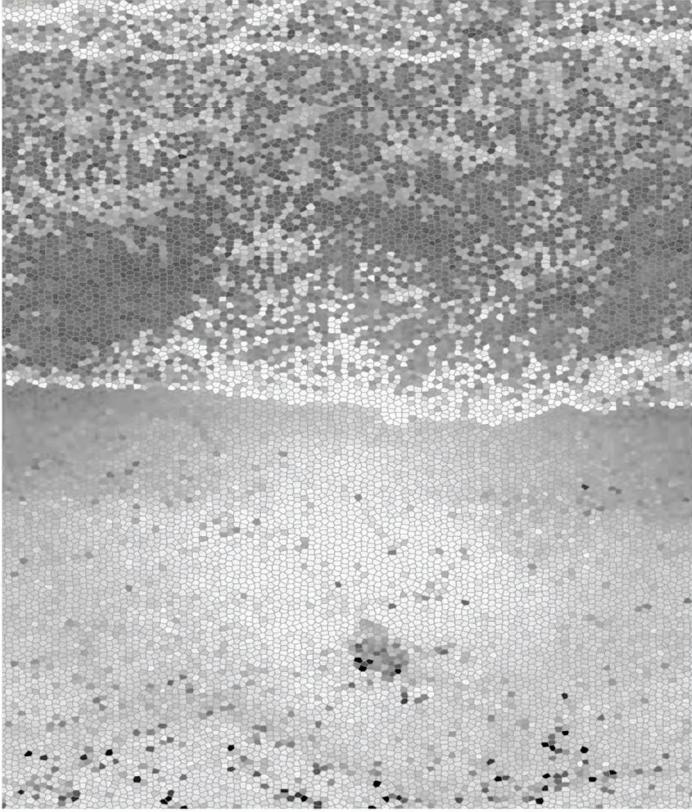
CITY OF MIAMI BEACH

OCEAN DRIVE | LIGHTING AND SIDEWALK IMPROVEMENTS

PUBLIC MEETING  
MARCH 2025



ATLANTIC OCEAN



MIAMI BEACH ART DECO



## Design inspiration

PROPOSED ALTERNATIVES

02MODULE



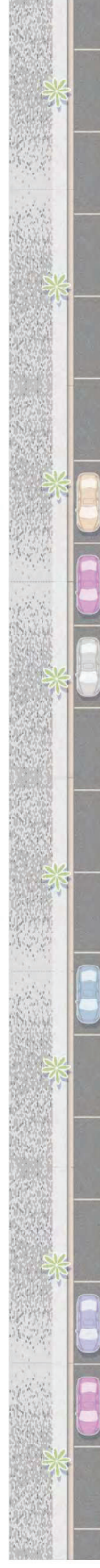
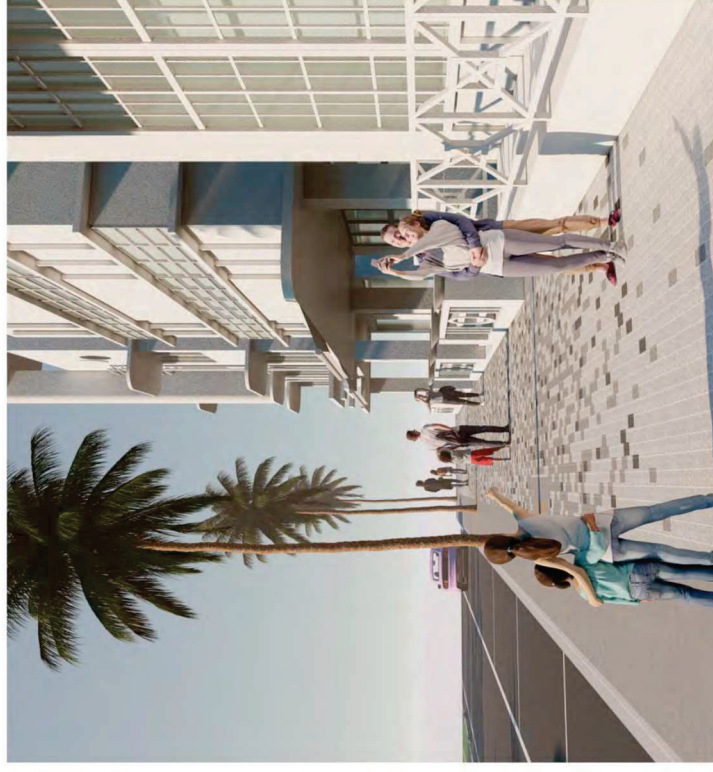
CITY OF MIAMI BEACH

OCEAN DRIVE | LIGHTING AND SIDEWALK IMPROVEMENTS

PUBLIC MEETING  
MARCH 2025



**OPTION 04 A**  
SOLDIER COURSE/ PAVERS 4"X8"

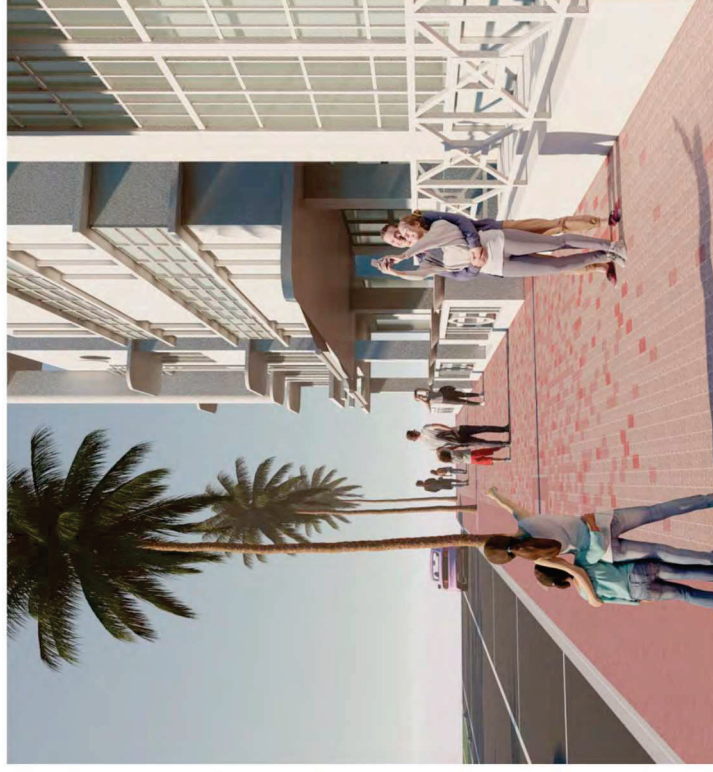
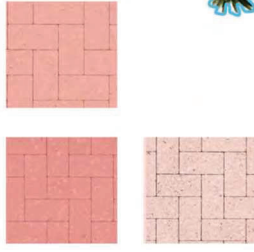


CITY OF MIAMI BEACH

OCEAN DRIVE | LIGHTING AND SIDEWALK IMPROVEMENTS

PUBLIC MEETING  
MARCH 2025

**OPTION 04 B**  
SOLDIER COURSE/ PAVERS 4"X8"



CITY OF MIAMI BEACH

OCEAN DRIVE | LIGHTING AND SIDEWALK IMPROVEMENTS

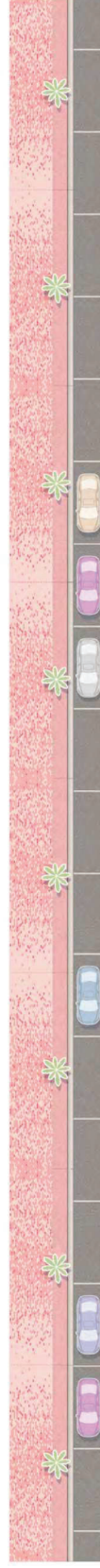
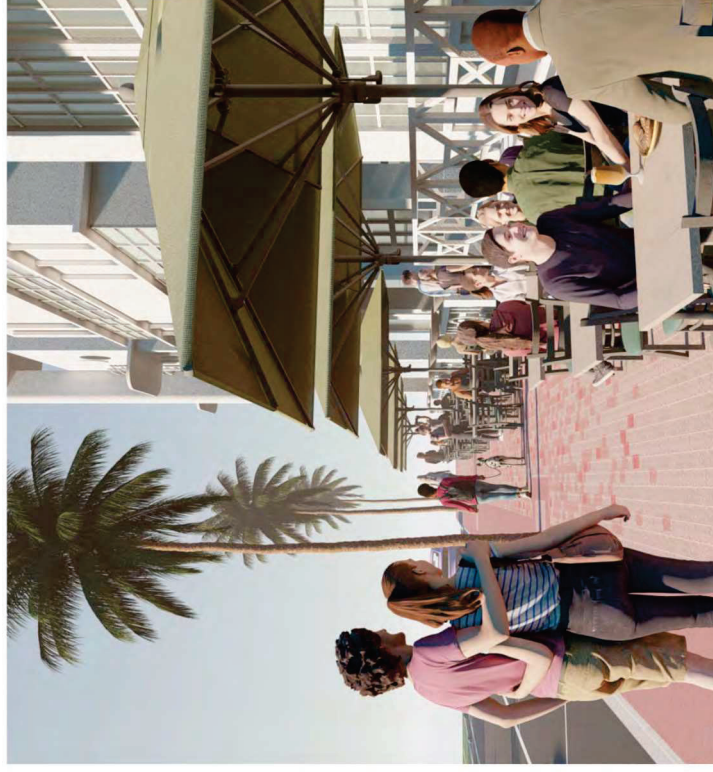
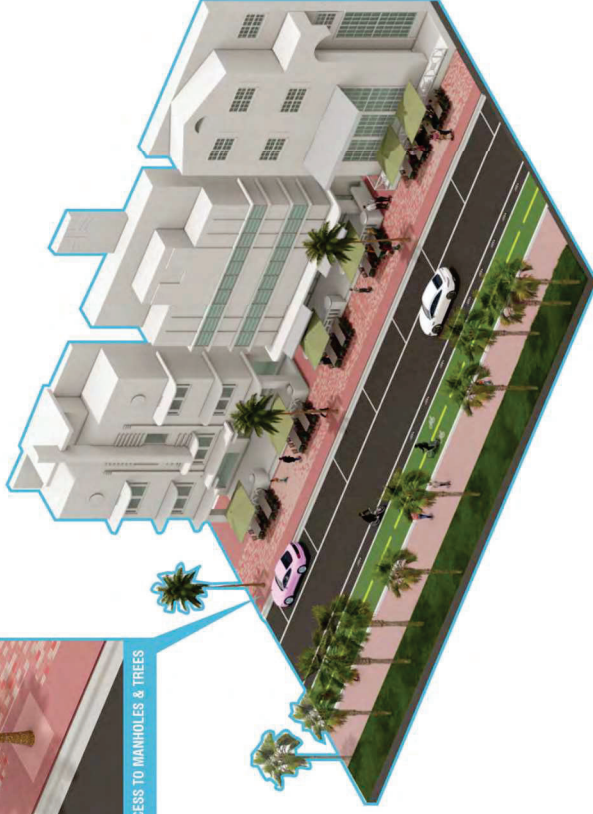
PUBLIC MEETING  
MARCH 2025



**OPTION 04 SEATING**  
SOLDIER COURSE/ PAVERS 4"X8"



ACCESS TO MANHOLES & TREES



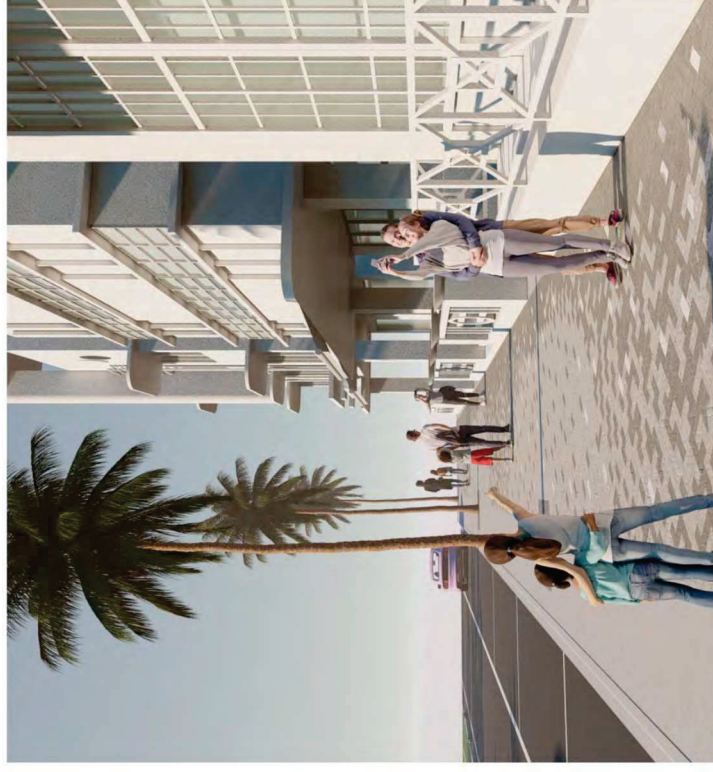
CITY OF MIAMI BEACH

OCEAN DRIVE | LIGHTING AND SIDEWALK IMPROVEMENTS

PUBLIC MEETING  
MARCH 2025



**OPTION 05 A**  
HERRINGBONE PATTERN/ PAVERS 4"X8"

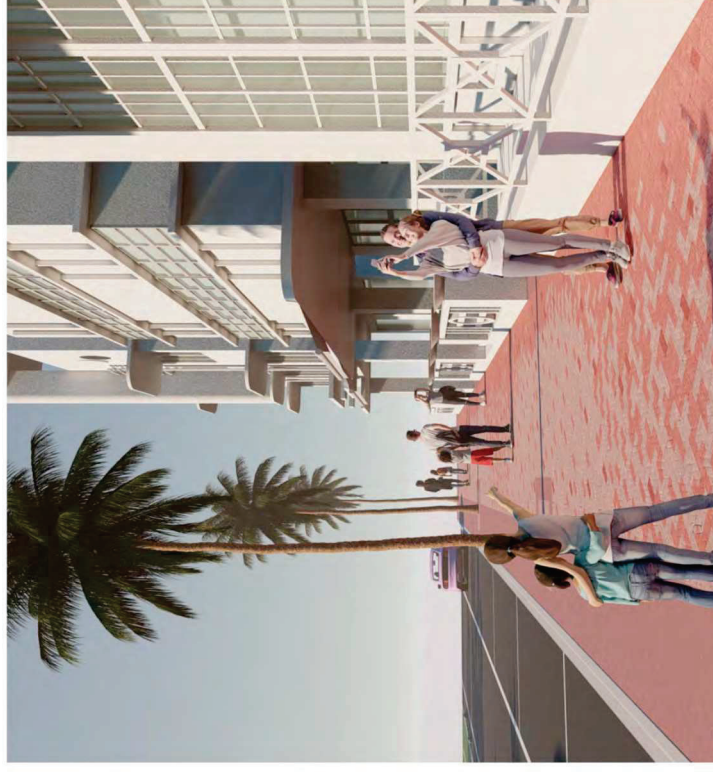
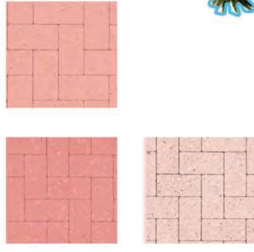


CITY OF MIAMI BEACH

OCEAN DRIVE | LIGHTING AND SIDEWALK IMPROVEMENTS

PUBLIC MEETING  
MARCH 2025

**OPTION 05 B**  
HERRINGBONE PATTERN/ PAVERS 4"X8"



CITY OF MIAMI BEACH

OCEAN DRIVE | LIGHTING AND SIDEWALK IMPROVEMENTS

PUBLIC MEETING  
MARCH 2025

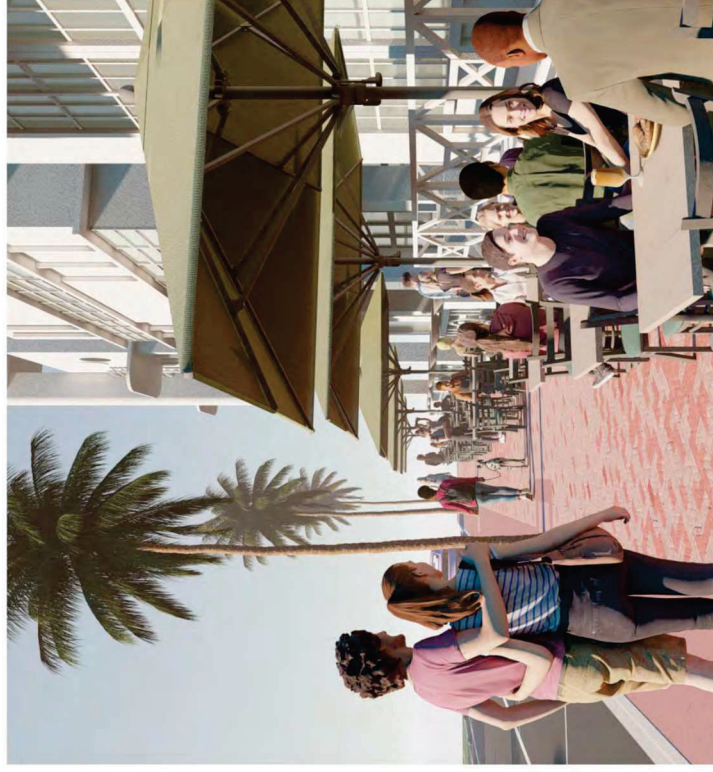
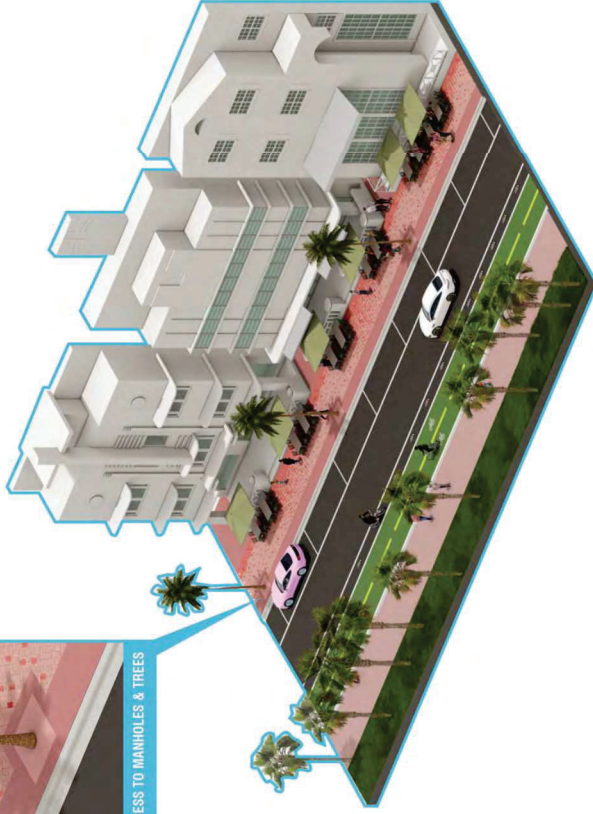


# OPTION 05 SEATING

HERRINGBONE PATTERN/ PAVERS 4"X8"



ACCESS TO MANHOLES & TREES



CITY OF MIAMI BEACH

OCEAN DRIVE | LIGHTING AND SIDEWALK IMPROVEMENTS

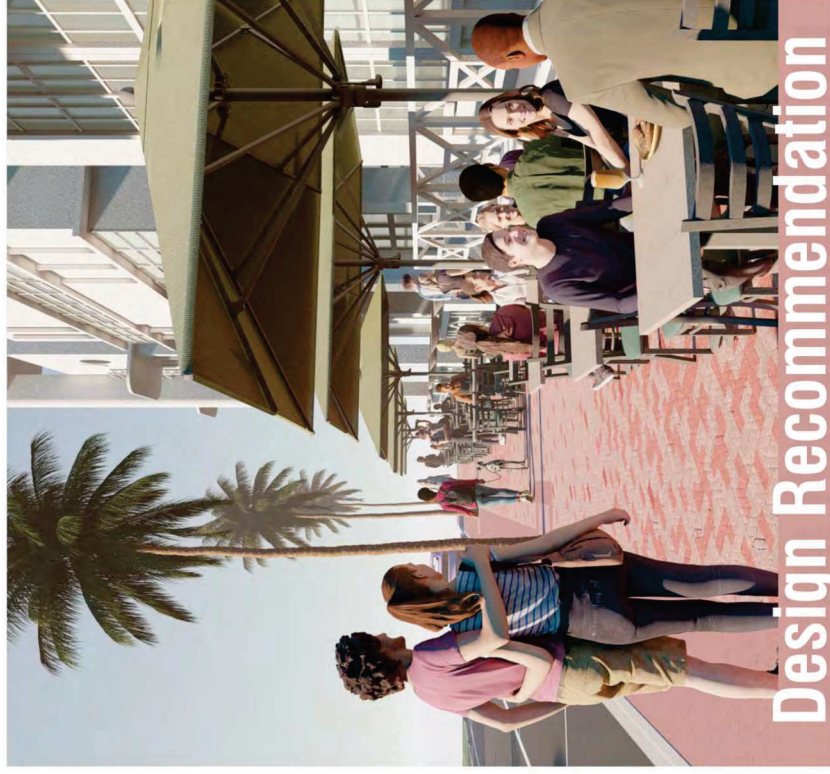
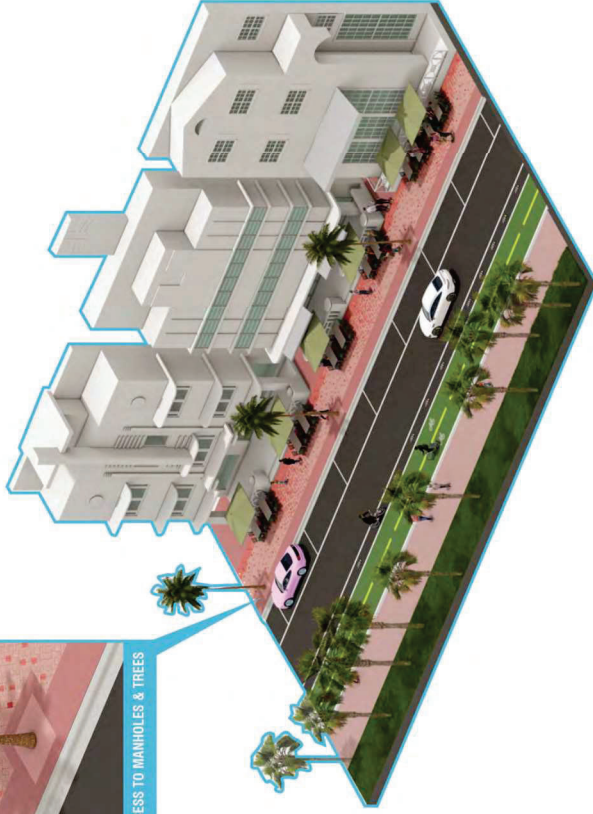
PUBLIC MEETING  
MARCH 2025



**OPTION 05 SEATING**  
 HERRINGBONE PATTERN/ PAVERS 4"X8"



ACCESS TO MANHOLES & TREES



**Design Recommendation**

# Discuss lighting strategy for Ocean Drive



CITY OF MIAMI BEACH

OCEAN DRIVE | LIGHTING AND SIDEWALK IMPROVEMENTS

PUBLIC MEETING  
MARCH 2025

46

02MODULE

PROPOSED ALTERNATIVES



# Turn

Design: FRIS & MOUTKE Design

**Turn** by Fris & Moutke Design is a new brand in the Focus program.

The luminaires in cast aluminium have silk-edged shades in clear glass. The housing is completed by a long ring in cast aluminium or a short, opal-white acrylic ring.

**Turn** is available as a spot with reflector or with optics for asymmetrical light.



TURN SPOT



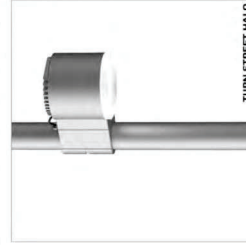
TURN SPOT HALO

**Turn Spot** is equipped with a long ring in cast aluminium for cut-off and anti-glare.

**Turn Spot Halo** is equipped with a short, opal-white acrylic ring, opening the luminaire and offering optical guidance.

Both spots are equipped with reflector and LED optics for asymmetrical light. The angles: narrow (12°), medium (19°), and wide (36°).

The spots can be adjusted horizontally around the post and vertically in the bracket. When holes have been bored in the post, the spots can be turned 90 degrees to both sides.

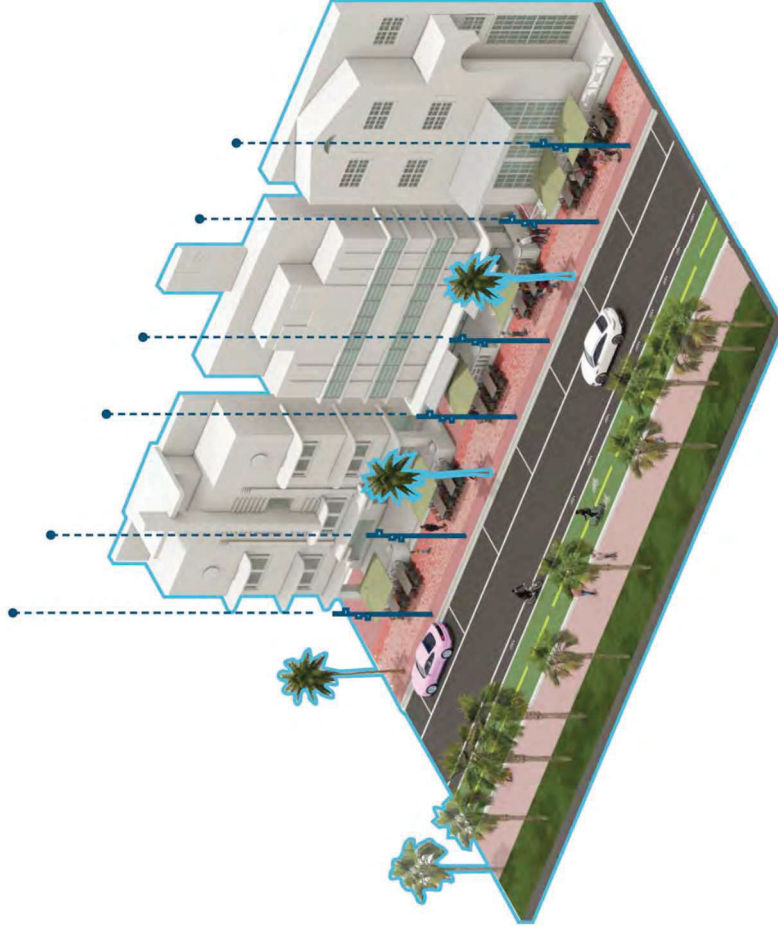


TURN STREET HALO

**Turn Street Halo** is available in one version only. The casing with the short, opal-white ring opens up for asymmetrical light onto cycling lanes and pedestrian areas.

The street luminaire will be equipped with programmed LED and lenses for asymmetrical light.

Find our sales partner in your country under Contacts at [www.focus-lighting.dk](http://www.focus-lighting.dk)



## FOCUS-LIGHTING

## PROPOSED ALTERNATIVES

## 02MODULE

47

PUBLIC MEETING  
MARCH 2025

OCEAN DRIVE | LIGHTING AND SIDEWALK IMPROVEMENTS



CITY OF MIAMI BEACH



## Turn

Design: FRIS & MOLTKE Design

**Turn** by Fris & Moltke Design is a new brand in the Focus program.

The luminaires in cast aluminium have silk-edged shades in clear glass. The housing is completed by a long ring in cast aluminium or a short, opal-white acrylic ring.

**Turn** is available as a spot with reflector or with optics for asymmetrical light.



TURN SPOT

**Turn Spot** is equipped with a long ring in cast aluminium for cut-off and anti-glare.

**Turn Spot Halo** is equipped with a short, opal-white acrylic ring, opening the luminaire and offering optical guidance.

Both spots are equipped with reflector and LED with light distribution in three angles: narrow (12°), medium (15°), and wide (38°).

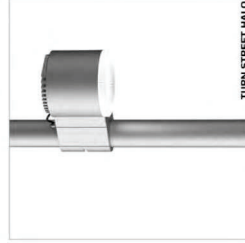
The spots can be adjusted horizontally around the post and vertically in the bracket. When holes have been bored in the post, the spots can be turned 30 degrees to both sides.



TURN SPOT HALO

**Turn Street Halo** is available in one version only. The luminaire is equipped with a short, opal-white acrylic ring, opening the luminaire and offering optical guidance up for asymmetrical light onto cycling lanes and pedestrian areas.

The street luminaire will be equipped with programmed LED and lenses for asymmetrical light.



TURN STREET HALO

Find our sales partner in your country under Contacts at [www.focus-lighting.dk](http://www.focus-lighting.dk)

## PROPOSED ALTERNATIVES

02MODULE

48

## FOCUS-LIGHTING

PUBLIC MEETING  
MARCH 2025

OCEAN DRIVE | LIGHTING AND SIDEWALK IMPROVEMENTS



CITY OF MIAMI BEACH





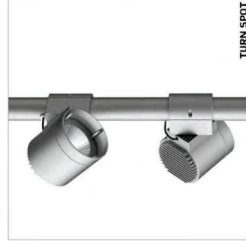
## Turn

Design: FRIS & MOLTKE Design

**Turn** by Fris & Moltke Design is a new brand in the Focus program.

The luminaires in cast aluminium have silk-edged shades in clear glass. The housing is completed by a long ring in cast aluminium or a short, opal-white acrylic ring.

**Turn** is available as a spot with reflector or with optics for asymmetrical light.



TURN SPOT

**Turn Spot** is equipped with a long ring in cast aluminium for cut-off and anti-glare.

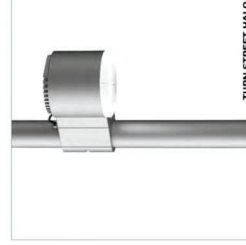
**Turn Spot Halo** is equipped with a short, opal-white acrylic ring, opening the luminaire and offering optical guidance.

Both spots are equipped with reflector and LED optics. The reflector is available in three angles: narrow (12°), medium (19°), and wide (36°).

The spots can be adjusted horizontally around the post and vertically in the bracket. When holes have been bored in the post, the spots can be turned 90 degrees to both sides.



TURN SPOT HALO



TURN STREET HALO

**Turn Street Halo** is available in one version only. The closing with the short, opal-white ring opens up for asymmetrical light into cycling lanes and pedestrian areas.

The street luminaire will be equipped with programmed LED and lenses for asymmetrical light.

Find our sales partner in your country under Contacts at [www.focus-lighting.dk](http://www.focus-lighting.dk)

## PROPOSED ALTERNATIVES

## 02MODULE

49

## FOCUS-LIGHTING

PUBLIC MEETING  
MARCH 2025

OCEAN DRIVE | LIGHTING AND SIDEWALK IMPROVEMENTS



CITY OF MIAMI BEACH



## Recommended Fixture



CITY OF MIAMI BEACH

OCEAN DRIVE | LIGHTING AND SIDEWALK IMPROVEMENTS

PUBLIC MEETING

MARCH 2025





CITY OF MIAMI BEACH

OCEAN DRIVE | LIGHTING AND SIDEWALK IMPROVEMENTS

PUBLIC MEETING  
MARCH 2025

51

02MODULE

PROPOSED ALTERNATIVES



LIGHT FIXTURES ALLOW FOR THE  
INCORPORATION OF TURTLE-FRIENDLY  
AMBER LIGHTING AND DIRECTIONAL  
SHIELDS



CITY OF MIAMI BEACH

OCEAN DRIVE | LIGHTING AND SIDEWALK IMPROVEMENTS

PUBLIC MEETING  
MARCH 2025





CITY OF MIAMI BEACH

OCEAN DRIVE | LIGHTING AND SIDEWALK IMPROVEMENTS

PUBLIC MEETING  
MARCH 2025

53

## 02MODULE

### PROPOSED ALTERNATIVES



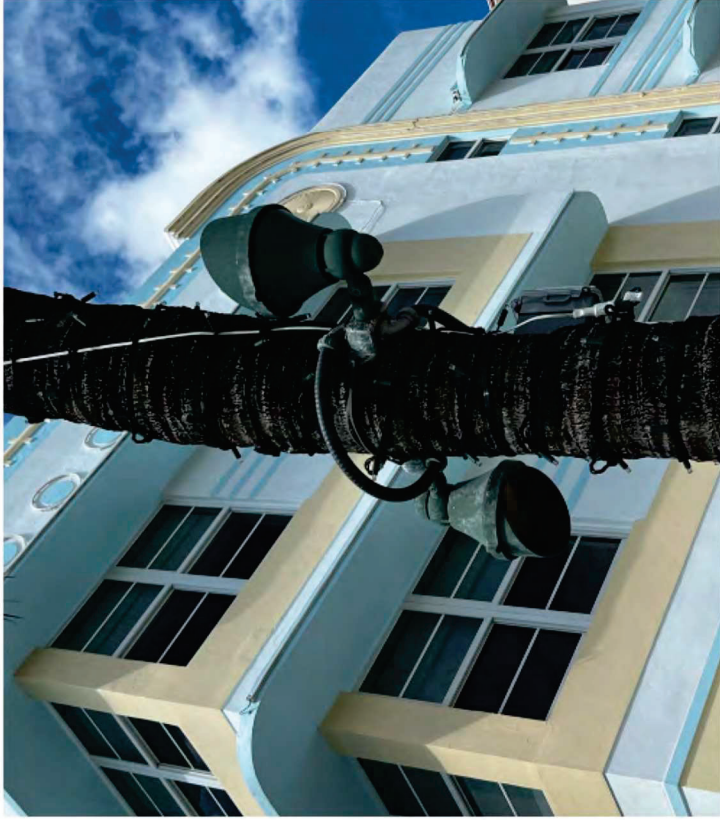


CITY OF MIAMI BEACH

OCEAN DRIVE | LIGHTING AND SIDEWALK IMPROVEMENTS

PUBLIC MEETING  
MARCH 2025





## Design Recommendation



CITY OF MIAMI BEACH

OCEAN DRIVE | LIGHTING AND SIDEWALK IMPROVEMENTS

PUBLIC MEETING  
MARCH 2025

55

02MODULE

PROPOSED ALTERNATIVES

# Summary of Recommendations

# 03



CITY OF MIAMI BEACH

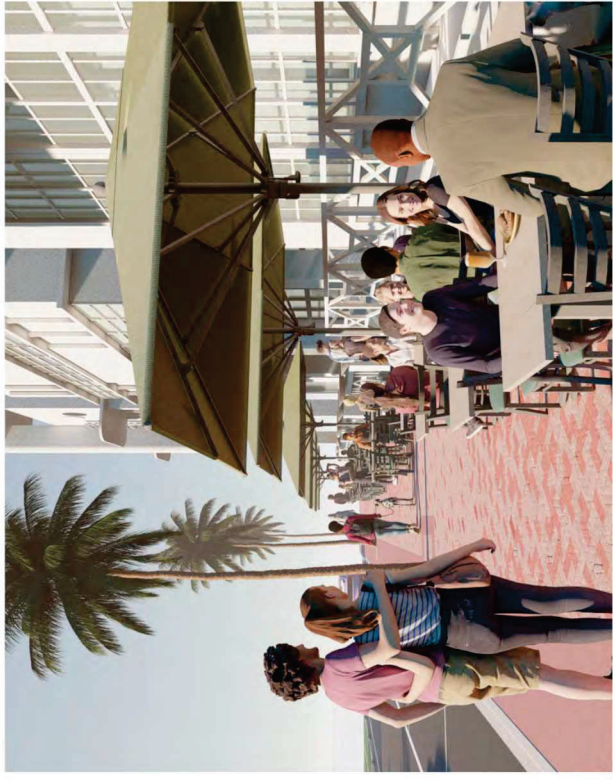
OCEAN DRIVE | LIGHTING AND SIDEWALK IMPROVEMENTS

PUBLIC MEETING  
MARCH 2025





PALM TREE RING LIGHTS



# Design Recommendations



CITY OF MIAMI BEACH

OCEAN DRIVE | LIGHTING AND SIDEWALK IMPROVEMENTS

PUBLIC MEETING  
MARCH 2025