

EXHIBIT 3

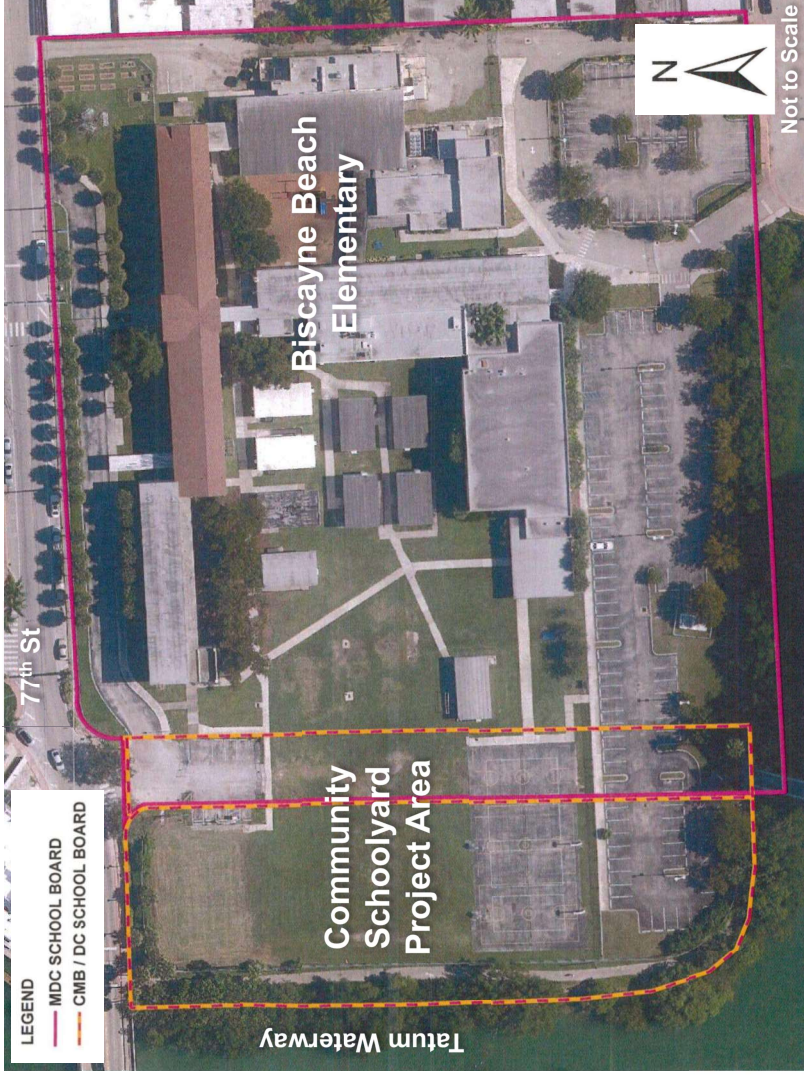
Biscayne Beach Elementary Schoolyard

TPL's First FLORIDA Community Schoolyard



Connecting everyone to the outdoors™

Based upon the current joint use agreement, the structure to design and implement an enhanced public green space is in place

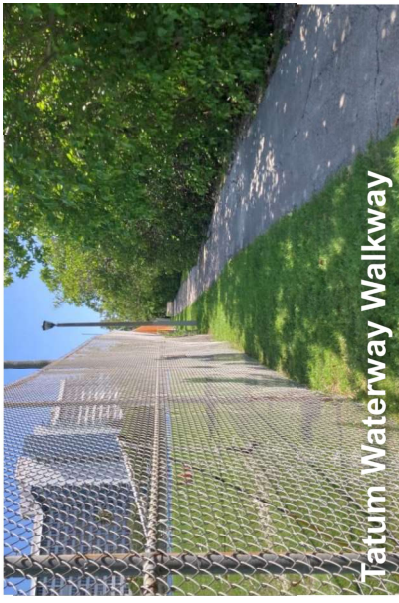


- MDCPC has a joint use agreement with City of Miami Beach
- Biscayne Beach Elementary is prone to flooding partly because it sits next to the Tatum Waterway
- City approved for TPL to lead community engagement and develop conceptual designs for site
- Right now, plan is for conceptual design to be handed over to City and school district to hire and manage consultant and contractor to finalize design and construct

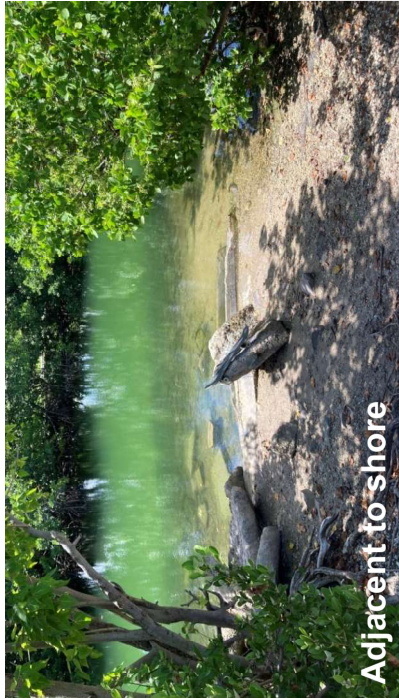
Site is perfect to be a recreational and educational hub for the community



Looking south across site



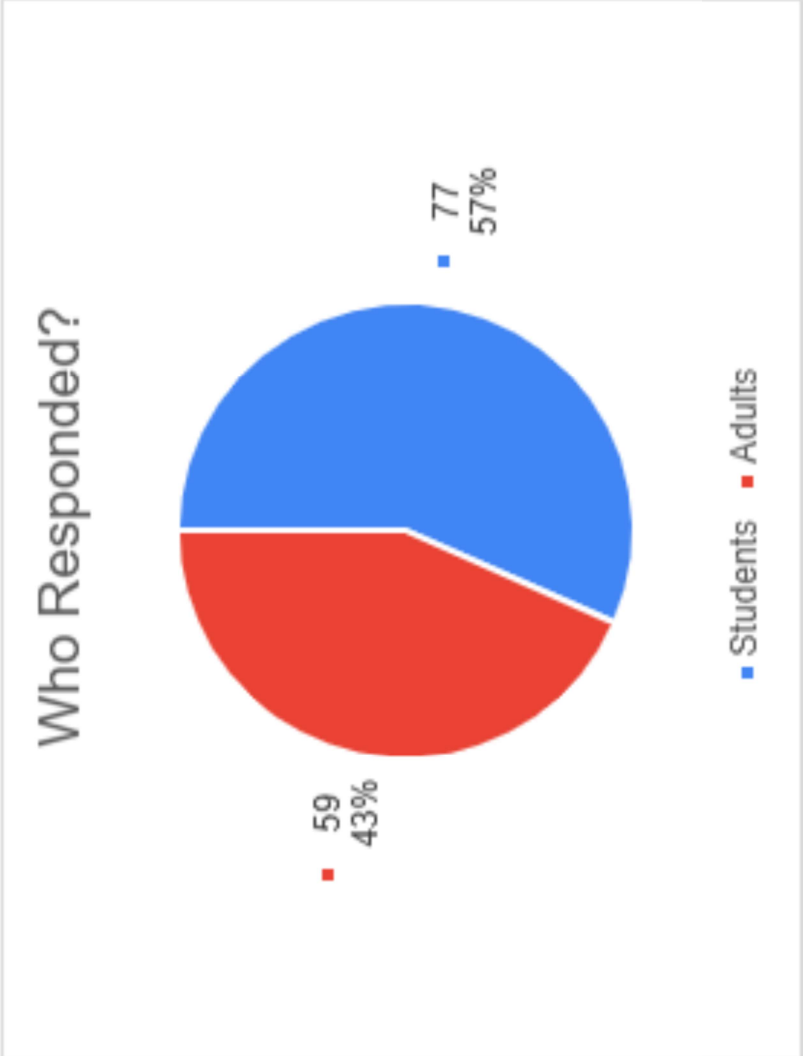
Tatum Waterway Walkway



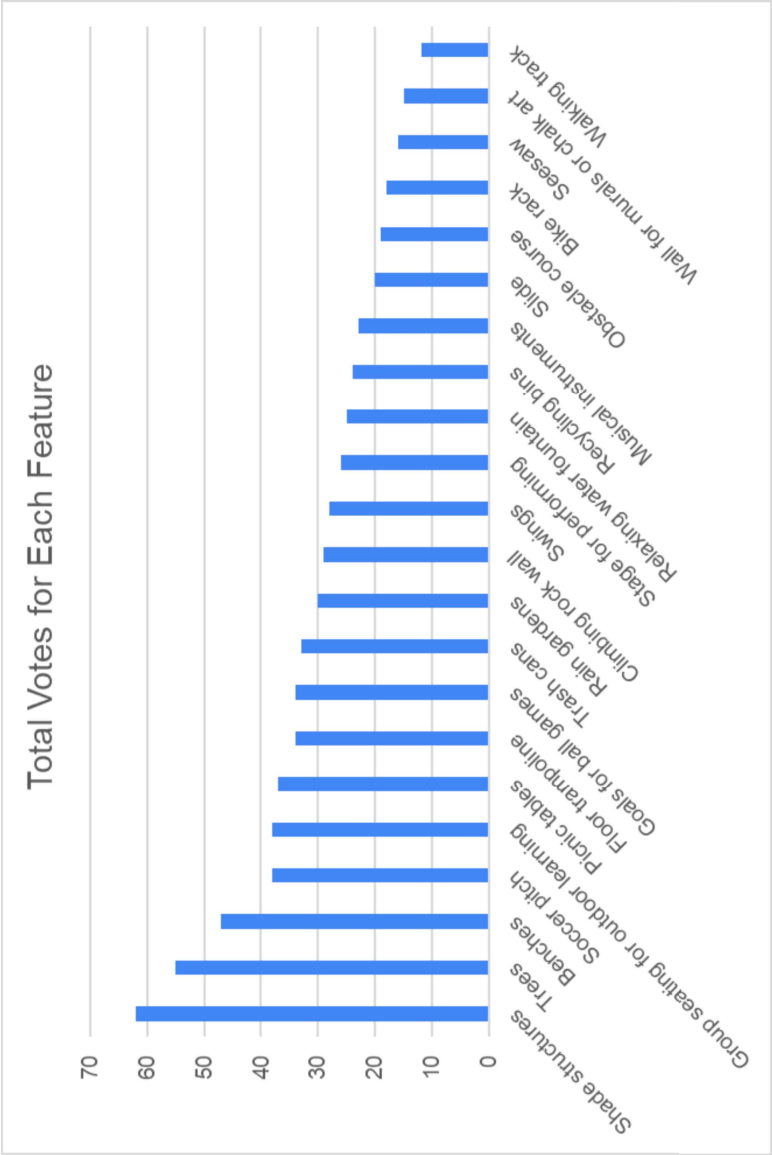
Adjacent to shore



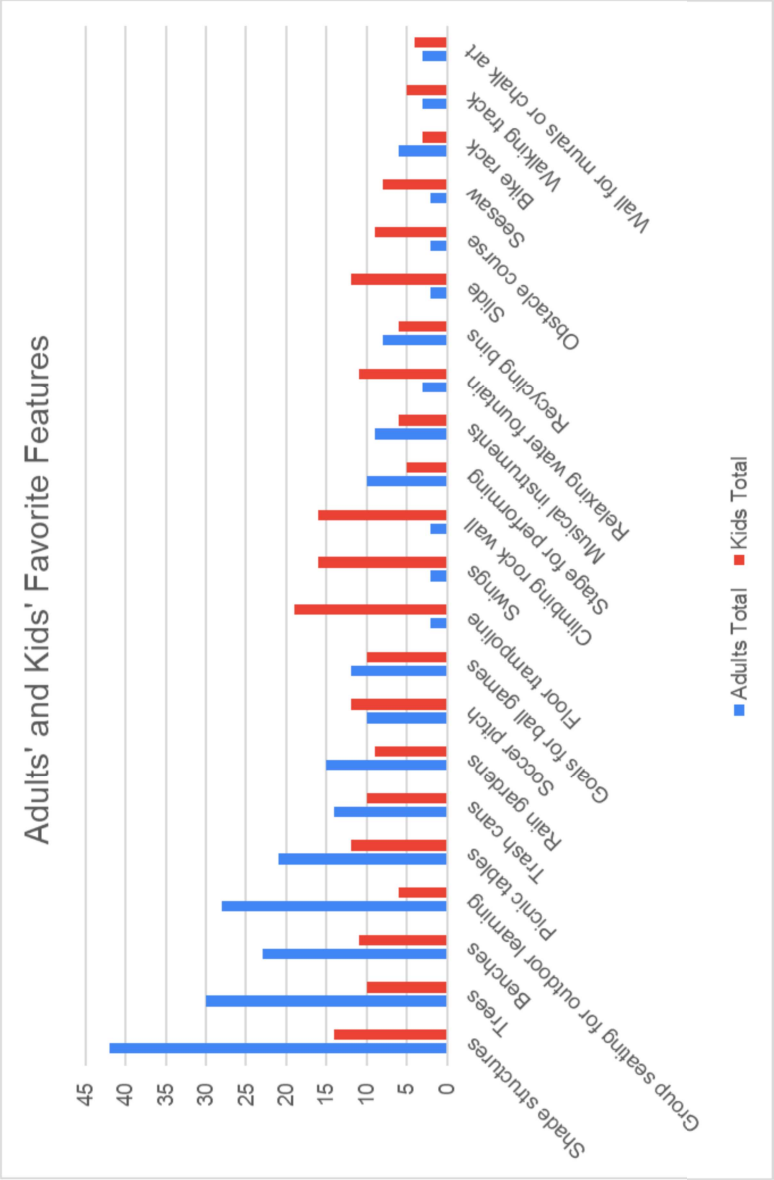
Biscayne Beach Elementary School Community Schoolyard Survey Results
(Slide 1 of 3)



Biscayne Beach Elementary School Community Schoolyard Survey Results
(Slide 2 of 3)



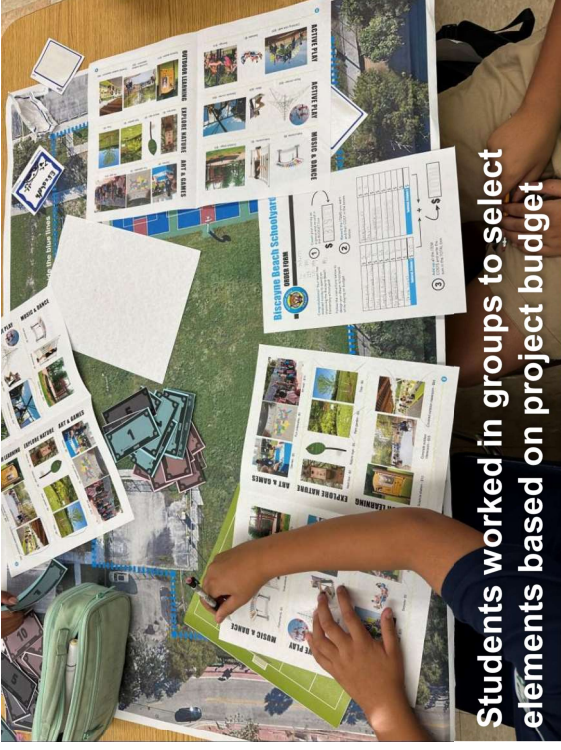
Biscayne Beach Elementary School Community Schoolyard Survey Results
(Slide 3 of 3)



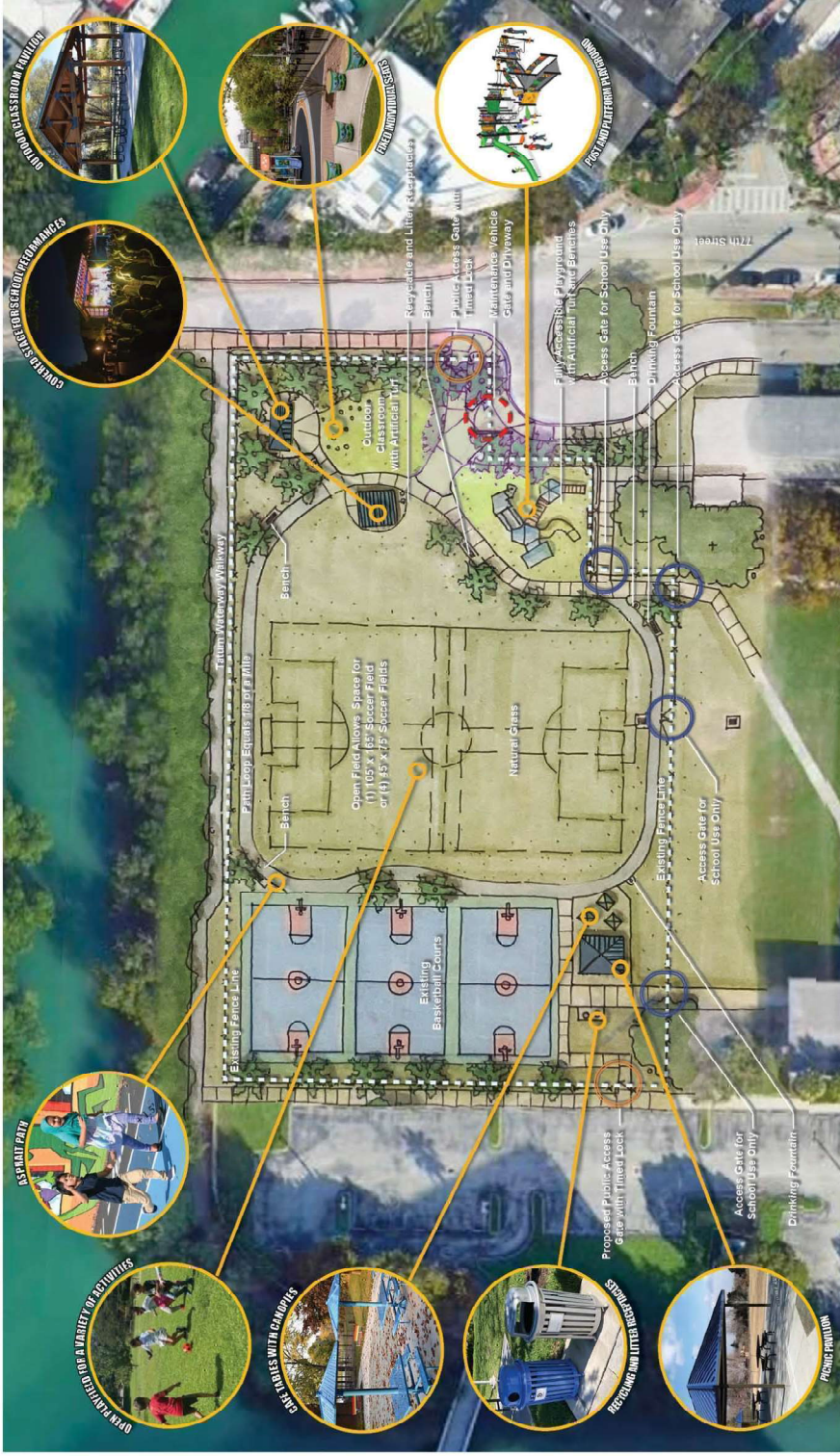
TPL coordinate two workshops with select students in the Fall to better understand the site and to collect their design ideas



Representatives from City and School worked with students to design their new schoolyard space



Students worked in groups to select elements based on project budget



Biscayne Beach Elementary Community Schoolyard
 Concept A - February 21, 2025

The Biscayne Beach Elementary Community Schoolyard project is a collaboration between Biscayne Beach Elementary, Miami-Dade County School District, City of Miami Beach, and Trust for Public Land.



