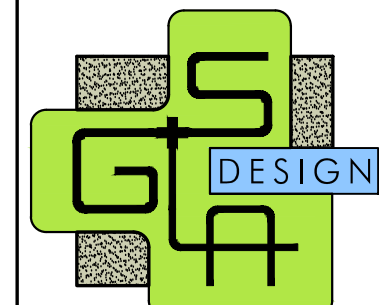




EXISTING TREE DISPOSITION LIST									
KEY	BOTANICAL NAME	COMMON NAME	SIZE			DISPOSITION	NOTES	MITIGATION	
			HT. (ft.)	SPD. (ft.)	DBH. (in.)			DBH (in.)	
1	<i>Phoenix dactylifera "Medool"</i>	Medool Date Palm	16	15	15	keep			
2	<i>Ligustrum japonicum</i>	Wax Leaf Privet	14	15	23.2,3.3	remove			
3	<i>Phoenix dactylifera "Medool"</i>	Medool Date Palm	32	15	15	keep			
4	<i>Phoenix dactylifera "Medool"</i>	Medool Date Palm	32	15	15	keep			
5	<i>Ligustrum japonicum</i>	Wax Leaf Privet	16	20	6.5,4	remove			15
6	<i>Phoenix dactylifera "Medool"</i>	Medool Date Palm	32	15	15	keep			
7	<i>Cocos nucifera</i>	Coconut Palm	22	15	8	keep			
8	<i>Psychopogon elegans</i>	Solitaire Palm	16	12	triple	keep			
9	<i>Psychopogon elegans</i>	Solitaire Palm	16	12	triple	keep			
10	<i>Psychopogon elegans</i>	Solitaire Palm	16	12	triple	transplant			
11	<i>Psychopogon elegans</i>	Solitaire Palm	16	12	triple	keep			
TOTAL DBH INCHES TO BE REMOVED						28			
TOTAL PAIMS TO BE REMOVED						none			
TOTAL DBH INCHES MITIGATION REQUIRED						20			
TOTAL DBH INCHES MITIGATION PROVIDED						20			



**GARDNER + SEMLER**  
LANDSCAPE ARCHITECTURE  
WWW.GSLADESIGN.COM  
17670 NW 78th AVE., SUITE 214  
MIAMI, FL 33015  
P 305.392.1016 F 305.392.1019  
CORP. ID # 0000266

This drawing is the property of GSIA Design and is not to be reproduced or copied in whole or part without written permission. It is not to be used on any other project and is to be returned on request. Contractor is responsible for verifying all site conditions prior to proceeding with work.

COPYRIGHT © 2020

Southgate Towers  
910 West Avenue, Miami Beach, FL 33139

**STAMP:**

Ken Gardner  
Kirk SesslerFL LA #1569  
FL LA #666720E

ISSUE

[illegible]

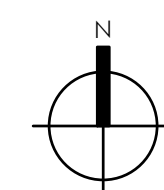
PROJECT NO.

DATE: 08/07/2024

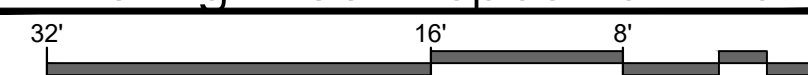
LA1-01

**DRAWING TITLE:**

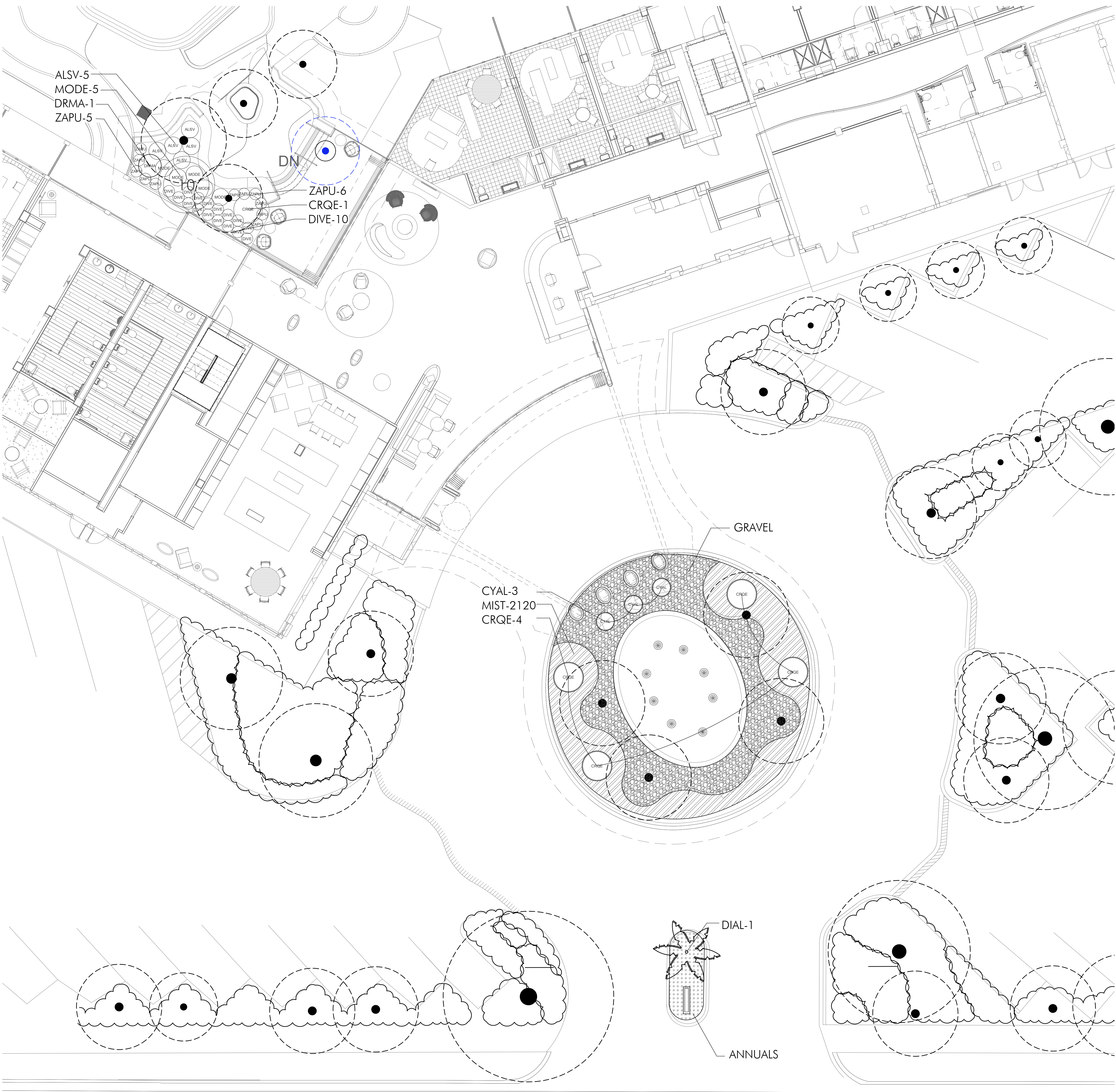
## EXISTING TREE DISPOSITION PLAN



## Existing Tree Disposition Plan

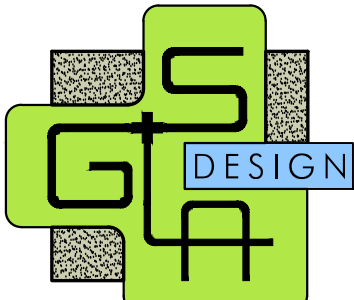
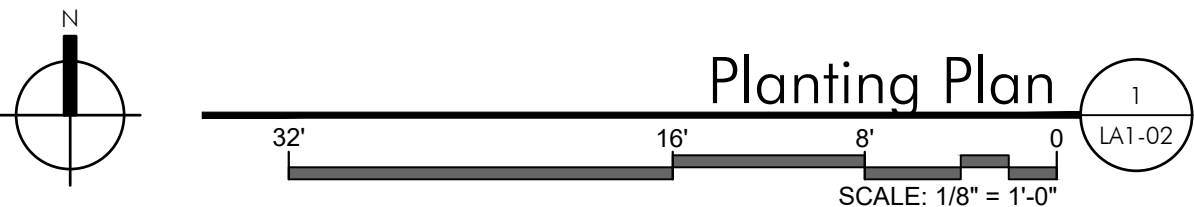






PLANT LIST				
PALMS				
KEY	PLANT NAME	QTY.	UT.	SIZE
DIAL	Dichosperma album ...Hurricane Palm	1	ea.	8' tall OA, 4' GW
SHRUBS				
KEY	PLANT NAME	QTY.	UT.	SIZE
ALSV	Alpinia speciosa Variegata ...Variegated Shell Ginger	5	ea.	36" x 36"
CRQE	Crinum augustum "Queen Emma" ...Queen Emma Crinum Lily	5	ea.	36" x 36"
CYAL	Cyperus alternifolius ...Papyrus	3	ea.	36" x 24"
DIVE	Dietes vegeta ...Walking Iris	10	ea.	3 gallon cans, full
DRMA	Dracaena massangeana ...Dumb Cane	1	ea.	6-7' tall overall, 3-4 trunks
MODE	Monstera deliciosa ...Monstera	5	ea.	24" x 24", mature leaves
ZAPU	Zamia pumila ...Coontie	11	ea.	18" x 18"
GROUNDCOVERS				
MIST	Mimosa shiglliosa ...Sunshine mimosa	2120	ea.	4" pots
MISCELLANEOUS				
	Planting Soil: 70% Silica Sand 20% Everglades Muck 10% Shredded Pinebark	as req.	c.y.	excavate and backfill 18" depth in all planting areas.
	Shredded Mulaleuca Mulch	as req.	c.y.	3" layer in all shrub beds
	Gravel	as req.	c.y.	3" thick over landscape fabric, gravel to be 2" aggregate, color to be selected.
Green	Road Planter Soil Mix	as req.	c.y.	
	GSIA Road Planter Soil Mix 25% Coarse Sand 25% Medium Sand 20% Rice Rock 30% Florida Peat	as req.	c.y.	
	Road Planter Soil Mix 50% Coarse Sand 20% Pine Bark 20% Florida Peat 10% Rice Rock	as req.	c.y.	
	Road Planter Soil Mix	as req.	c.y.	
	Road Planter Soil Mix	as req.	c.y.	

WEST AVENUE



GARDNER + SEARLES  
LANDSCAPE ARCHITECTURE  
WWW.GSIADESIGN.COM  
17620 NW 78th Ave., Suite 214  
Miami, FL 33155  
P 305.592.1010 F 305.592.1019  
CORP. ID #0000266  
This drawing is the property of  
GSIA Design and is not to be  
reproduced or copied in whole or  
part without written permission. It  
is not to be used on any other  
project and is to be returned on  
request. Contractor is responsible  
for verifying all site conditions  
prior to proceeding with work.  
COPYRIGHT © 2020

Southgate Towers  
910 West Avenue, Miami Beach, FL 33139

STAMP:

ISSUE

PROJECT NO.

DATE:  
08/07/2024

LA1-02

DRAWING TITLE:

PLANTING PLAN



