

94 PALM RESIDENCE

DRB SET

94 PALM AVENUE, MIAMI BEACH, FL 33139



2024/06/14 DRB SET

SHEET INDEX

| LANDSCAPE DRAWINGS | | DRAWING NOTES |
|--------------------------|------|-----------------------------|
| <input type="checkbox"/> | L001 | COVER PAGE |
| <input type="checkbox"/> | L003 | SITE PLAN |
| <input type="checkbox"/> | L004 | SURVEY |
| <input type="checkbox"/> | L005 | SURVEY + AERIAL PHOTO |
| <input type="checkbox"/> | L100 | TREE DISPOSITION SCHEDULE |
| <input type="checkbox"/> | L101 | TREE DISPOSITION SCHEDULE |
| <input type="checkbox"/> | L102 | TREE DISPOSITION NOTES |
| <input type="checkbox"/> | L110 | TREE DISPOSITION PLAN |
| <input type="checkbox"/> | L200 | MATERIALS SCHEDULE |
| <input type="checkbox"/> | L210 | MATERIALS PLAN |
| <input type="checkbox"/> | L400 | PLANTING SCHEDULE |
| <input type="checkbox"/> | L401 | LANDSCAPE LEGEND |
| <input type="checkbox"/> | L402 | PLANTING PALETTE |
| <input type="checkbox"/> | L410 | TREES & PALMS PLANTING PLAN |
| <input type="checkbox"/> | L420 | UNDERSTORY PLANTING PLAN |

By Others

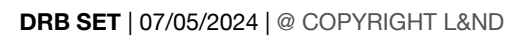
DESIGN TEAM

| | |
|--|--|
| ARCHITECT: BORGES ARCHITECTS + ASSOCIATES 237 S DIXIE HWY CORA GABLES, FL 33133 305.374.9216 | LANDSCAPE ARCHITECT: L&ND 7294 NW 1st COURT MIAMI, FL 33150 614.439.4895 |
|--|--|



Digitally signed by
marsh c kripen
Date: 2024.07.02
21:34:10 -04'00'

1. ACCESS
2. DRIVEWAY
3. PARKING
4. WATER FEATURE
5. ENCLOSED STORAGE
6. EXISTING STRUCTURE
7. ACCESSORY BUILDING
8. TERRACE
9. LOWER POOL
10. SPA
11. LOWER PIT
12. POOL
13. PEDESTRIAN CIRCULATION
14. LAWN AREA
15. SAND AREA
16. SPORTS COURT
17. POROUS PAVEMENT

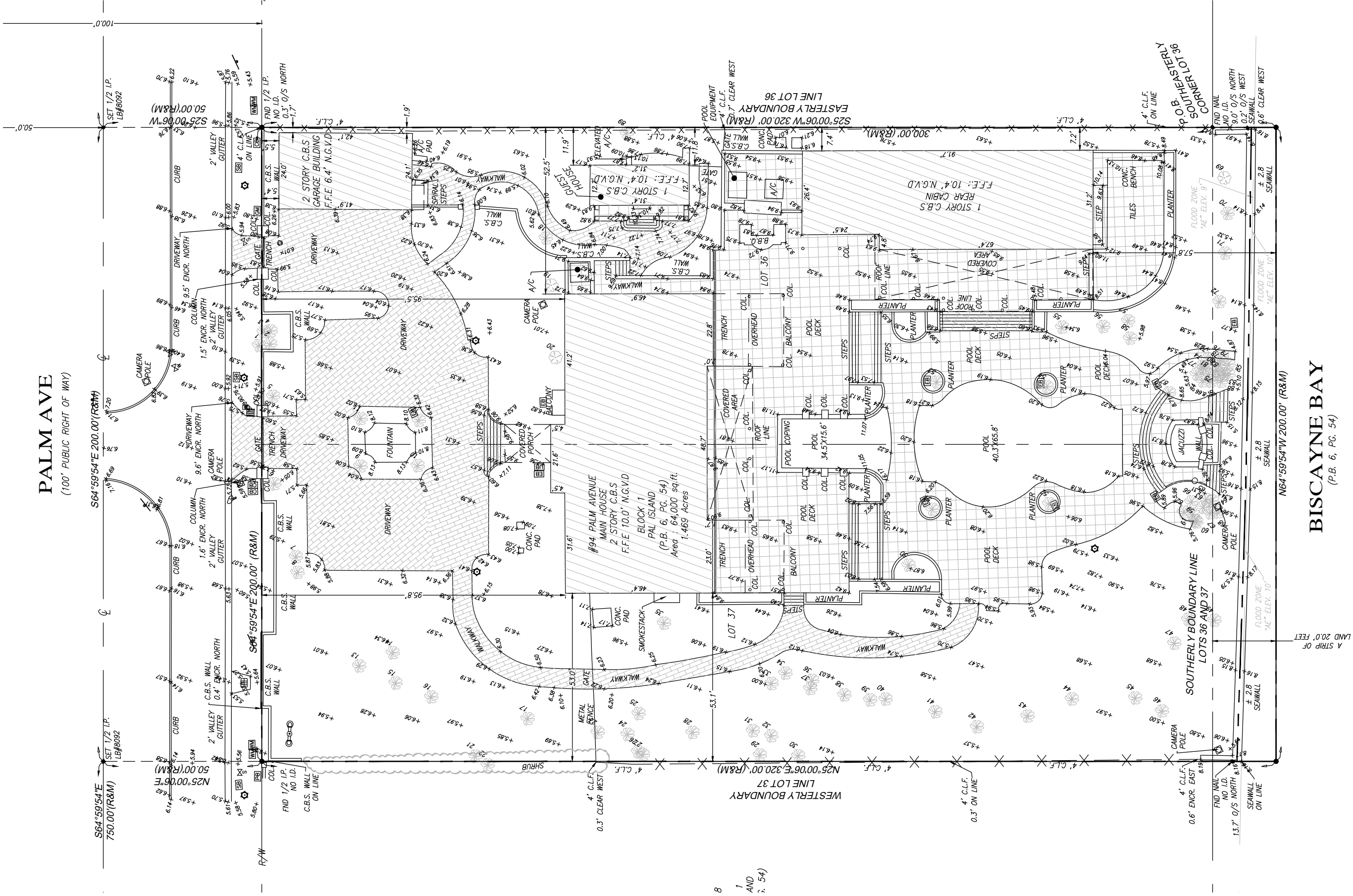


94 Palm Residence

94 PALM AVENUE, MIAMI BEACH, FL 33139

L&ND

www.land.design



Scale 1" = 30'-0"



L004
SURVEY

DRB SET | 07/05/2024 | @ COPYRIGHT L&ND



94 Palm Residence
94 PALM AVENUE, MIAMI BEACH, FL 33139

Tree Disposition Schedule

| TREE No. | SCIENTIFIC NAME | COMMON NAME | DIAMETER at BREAST HEIGHT (in inches) | APPROX HEIGHT (in feet) | CANOPY DIAMETER (in feet) | CRITICAL ROOTZONE DIAMETER (in feet) | CONDITION | DISPOSITION | REMOVAL MUNICIPAL CRITERIA | | NOTES | |
|----------|-------------------------|------------------|---------------------------------------|-------------------------|---------------------------|--------------------------------------|-----------|-------------|----------------------------|--------|-------|--|
| | | | | | | | | | PALM | CANOPY | | |
| | | | | | | | | | 1:1 | DBH | | |
| 1 | PHOENIX DACTYLIFERA | DATE PALM | 13 | 20 | 9 | | | REMAIN | | | | |
| 2 | PHOENIX DACTYLIFERA | DATE PALM | 13 | 20 | 9 | | | REMAIN | | | | |
| 3 | PHOENIX DACTYLIFERA | DATE PALM | 18 | 37 | 9 | | | REMAIN | | | | |
| 4 | PHOENIX DACTYLIFERA | DATE PALM | 18 | 37 | 9 | | | REMAIN | | | | |
| 5 | PHOENIX DACTYLIFERA | DATE PALM | 18 | 37 | 9 | | | REMAIN | | | | |
| 6 | PHOENIX DACTYLIFERA | DATE PALM | 18 | 37 | 9 | | | TRANSPLANT | | | | |
| 7 | ROYSTONEA REGIA | ROYAL PALM | 18 | 37 | 9 | | | REMAIN | | | | |
| 8 | LIVISTONIA CHINENSIS | CHINESE FAN PALM | 10 | 37 | 9 | | | REMAIN | | | | |
| 9 | ROYSTONEA REGIA | ROYAL PALM | 18 | 37 | 9 | | | REMOVE | 1 | | | |
| 10 | ROYSTONEA REGIA | ROYAL PALM | 18 | 37 | 9 | | | REMOVE | 1 | | | |
| 11 | ROYSTONEA REGIA | ROYAL PALM | 18 | 37 | 9 | | | REMOVE | 1 | | | |
| 12 | ROYSTONEA REGIA | ROYAL PALM | 18 | 37 | 9 | | | REMOVE | 1 | | | |
| 13 | COCOS NUCIFERA | COCONUT PALM | 10 | 37 | 9 | | | TRANSPLANT | | | | |
| 14 | COCOS NUCIFERA | COCONUT PALM | 10 | 37 | 9 | | | REMOVE | 1 | | | |
| 15 | ROYSTONEA REGIA | ROYAL PALM | 13 | 20 | 9 | | | REMOVE | 1 | | | |
| 16 | ROYSTONEA REGIA | ROYAL PALM | 18 | 37 | 9 | | | REMOVE | 1 | | | |
| 17 | ROYSTONEA REGIA | ROYAL PALM | 10 | 20 | 9 | | | REMOVE | 1 | | | |
| 18 | ADONIDIA MERRILLII | CHRISTMAS PALM | (2) 8 | 25 | 6 | | | REMOVE | 1 | | | |
| 19 | PODOCARPUS MACROPHYLLUS | PODOCARPUS | 8 | 30 | 6 | | | REMOVE | | 8 | | |
| 20 | PODOCARPUS MACROPHYLLUS | PODOCARPUS | 8 | 30 | 6 | | | REMOVE | | 8 | | |
| 21 | ROYSTONEA REGIA | ROYAL PALM | 13 | 40 | 9 | | | REMAIN | | | | |
| 22 | ROYSTONEA REGIA | ROYAL PALM | 13 | 40 | 9 | | | REMAIN | | | | |
| 23 | ROYSTONEA REGIA | ROYAL PALM | 13 | 20 | 9 | | | TRANSPLANT | | | | |
| 24 | ROYSTONEA REGIA | ROYAL PALM | 13 | 20 | 9 | | | TRANSPLANT | | | | |
| 25 | ROYSTONEA REGIA | ROYAL PALM | 13 | 20 | 9 | | | TRANSPLANT | | | | |
| 26 | ROYSTONEA REGIA | ROYAL PALM | 13 | 40 | 9 | | | REMAIN | | | | |
| 27 | ROYSTONEA REGIA | ROYAL PALM | 13 | 40 | 9 | | | REMAIN | | | | |
| 28 | ROYSTONEA REGIA | ROYAL PALM | 10 | 20 | 9 | | | REMOVE | 1 | | | |
| 29 | ROYSTONEA REGIA | ROYAL PALM | 13 | 40 | 9 | | | REMAIN | | | | |
| 30 | ROYSTONEA REGIA | ROYAL PALM | 13 | 40 | 9 | | | REMAIN | | | | |
| 31 | ROYSTONEA REGIA | ROYAL PALM | 4 | 25 | 6 | | | REMOVE | 1 | | | |
| 32 | ROYSTONEA REGIA | ROYAL PALM | 4 | 25 | 6 | | | REMOVE | 1 | | | |
| 33 | LIVISTONIA CHINENSIS | CHINESE FAN PALM | 10 | 40 | 9 | | | REMOVE | 1 | | | |
| 34 | LIVISTONIA CHINENSIS | CHINESE FAN PALM | 10 | 40 | 9 | | | REMOVE | 1 | | | |
| 35 | ROYSTONEA REGIA | ROYAL PALM | 18 | 50 | 9 | | | REMOVE | 1 | | | |
| 36 | LIVISTONIA CHINENSIS | CHINESE FAN PALM | 13 | 20 | 9 | | | REMOVE | 1 | | | |
| 37 | LIVISTONIA CHINENSIS | CHINESE FAN PALM | 13 | 20 | 9 | | | REMOVE | 1 | | | |
| 38 | LIVISTONIA CHINENSIS | CHINESE FAN PALM | 13 | 20 | 9 | | | REMOVE | 1 | | | |
| 39 | LIVISTONIA CHINENSIS | CHINESE FAN PALM | 13 | 20 | 9 | | | REMOVE | 1 | | | |
| 40 | LIVISTONIA CHINENSIS | CHINESE FAN PALM | 13 | 20 | 9 | | | REMOVE | 1 | | | |
| 41 | ROYSTONEA REGIA | ROYAL PALM | 18 | 50 | 9 | | | REMAIN | | | | |
| 42 | ROYSTONEA REGIA | ROYAL PALM | 18 | 50 | 9 | | | REMAIN | | | | |
| 43 | ROYSTONEA REGIA | ROYAL PALM | 18 | 50 | 9 | | | REMAIN | | | | |
| 44 | ROYSTONEA REGIA | ROYAL PALM | 18 | 50 | 9 | | | REMAIN | | | | |
| 45 | ROYSTONEA REGIA | ROYAL PALM | 13 | 40 | 9 | | | TRANSPLANT | | | | |
| 46 | ROYSTONEA REGIA | ROYAL PALM | 10 | 20 | 9 | | | TRANSPLANT | | | | |
| 47 | COCOS NUCIFERA | COCONUT PALM | 13 | 20 | 9 | | | TRANSPLANT | | | | |
| 48 | COCOS NUCIFERA | COCONUT PALM | 13 | 20 | 9 | | | TRANSPLANT | | | | |
| 49 | COCOS NUCIFERA | COCONUT PALM | 13 | 20 | 9 | | | REMAIN | | | | |
| 50 | ROYSTONEA REGIA | ROYAL PALM | 18 | 40 | 9 | | | REMOVE | 1 | | | |

94 Palm Residence

94 PALM AVENUE, MIAMI BEACH, FL 33139

Tree Disposition Schedule

| TREE No. | SCIENTIFIC NAME | COMMON NAME | DIAMETER at BREAST HEIGHT (in inches) | APPROX HEIGHT (in feet) | CANOPY DIAMETER (in feet) | CRITICAL ROOTZONE DIAMETER (in feet) | CONDITION | DISPOSITION | REMOVAL MUNICIPAL CRITERIA | | NOTES | |
|--|---------------------|---------------|---------------------------------------|-------------------------|---------------------------|--------------------------------------|-----------|-------------|----------------------------|--------|---|-----|
| | | | | | | | | | PALM | CANOPY | | |
| | | | | | | | | | 1:1 | DBH | | |
| 51 | PHOENIX DACTYLIFERA | DATE PALM | 13 | 20 | 9 | | | REMOVE | 1 | | | |
| 52 | PHOENIX DACTYLIFERA | DATE PALM | 13 | 20 | 9 | | | REMOVE | 1 | | | |
| 53 | PHOENIX DACTYLIFERA | DATE PALM | 13 | 20 | 9 | | | REMOVE | 1 | | | |
| 54 | PHOENIX DACTYLIFERA | DATE PALM | 13 | 20 | 9 | | | REMOVE | 1 | | | |
| 55 | ROYSTONEA REGIA | ROYAL PALM | 18 | 50 | 9 | | | REMOVE | 1 | | | |
| 56 | ROYSTONEA REGIA | ROYAL PALM | 18 | 50 | 9 | | | REMOVE | 1 | | | |
| 57 | ROYSTONEA REGIA | ROYAL PALM | 13 | 40 | 9 | | | REMOVE | 1 | | | |
| 58 | ROYSTONEA REGIA | ROYAL PALM | 13 | 40 | 9 | | | REMOVE | 1 | | | |
| 59 | ACOELORRHAPHE | PAUROTIS PALM | 4 | 25 | 6 | | | REMOVE | | | NOT REGULATED | |
| 60 | ACOELORRHAPHE | PAUROTIS PALM | 4 | 25 | 6 | | | REMOVE | | | NOT REGULATED | |
| 61 | ACOELORRHAPHE | PAUROTIS PALM | 4 | 25 | 6 | | | REMOVE | | | NOT REGULATED | |
| 62 | ACOELORRHAPHE | PAUROTIS PALM | 4 | 25 | 6 | | | REMOVE | | | NOT REGULATED | |
| 63 | ACOELORRHAPHE | PAUROTIS PALM | 4 | 25 | 6 | | | REMOVE | | | NOT REGULATED | |
| 64 | ACOELORRHAPHE | PAUROTIS PALM | 4 | 25 | 6 | | | REMOVE | | | NOT REGULATED | |
| 65 | ACOELORRHAPHE | PAUROTIS PALM | 4 | 25 | 6 | | | REMOVE | | | NOT REGULATED | |
| 66 | ACOELORRHAPHE | PAUROTIS PALM | 4 | 25 | 6 | | | REMOVE | | | NOT REGULATED | |
| 67 | ACOELORRHAPHE | PAUROTIS PALM | 4 | 25 | 6 | | | REMOVE | | | NOT REGULATED | |
| 68 | ACOELORRHAPHE | PAUROTIS PALM | 4 | 25 | 6 | | | REMOVE | | | NOT REGULATED | |
| 69 | JUNIPERUS | JUNIPER TREE | 8 | 30 | 6 | | | REMOVE | | 8 | | |
| 70 | COCOS NUCIFERA | COCONUT PALM | 13 | 20 | 9 | | | REMAIN | | | | |
| 71 | COCOS NUCIFERA | COCONUT PALM | 13 | 20 | 9 | | | REMAIN | | | | |
| 72 | COCOS NUCIFERA | COCONUT PALM | 13 | 20 | 9 | | | REMAIN | | | | |
| 73 | ACOELORRHAPHE | PAUROTIS PALM | 4 | 25 | 6 | | | REMOVE | | | NOT REGULATED | |
| 74 | ACOELORRHAPHE | PAUROTIS PALM | 4 | 25 | 6 | | | REMOVE | | | NOT REGULATED | |
| 75 | ACOELORRHAPHE | PAUROTIS PALM | 4 | 25 | 6 | | | REMOVE | | | NOT REGULATED | |
| 76 | ACOELORRHAPHE | PAUROTIS PALM | 4 | 25 | 6 | | | REMOVE | | | NOT REGULATED | |
| 77 | ACOELORRHAPHE | PAUROTIS PALM | 4 | 25 | 6 | | | REMOVE | | | NOT REGULATED | |
| 78 | ACOELORRHAPHE | PAUROTIS PALM | 4 | 25 | 6 | | | REMOVE | | | NOT REGULATED | |
| 79 | ACOELORRHAPHE | PAUROTIS PALM | 4 | 25 | 6 | | | REMOVE | | | NOT REGULATED | |
| 80 | ACOELORRHAPHE | PAUROTIS PALM | 4 | 25 | 6 | | | REMOVE | | | NOT REGULATED | |
| 81 | ACOELORRHAPHE | PAUROTIS PALM | 4 | 25 | 6 | | | REMOVE | | | NOT REGULATED | |
| 82 | ACOELORRHAPHE | PAUROTIS PALM | 4 | 25 | 6 | | | REMOVE | | | NOT REGULATED | |
| 83 | ACOELORRHAPHE | PAUROTIS PALM | 4 | 25 | 6 | | | REMOVE | | | NOT REGULATED | |
| 84 | ACOELORRHAPHE | PAUROTIS PALM | 4 | 25 | 6 | | | REMOVE | | | NOT REGULATED | |
| 85 | ACOELORRHAPHE | PAUROTIS PALM | 4 | 25 | 6 | | | REMOVE | | | NOT REGULATED | |
| 86 | ACOELORRHAPHE | PAUROTIS PALM | 4 | 25 | 6 | | | REMOVE | | | NOT REGULATED | |
| 87 | ACOELORRHAPHE | PAUROTIS PALM | 4 | 25 | 6 | | | REMOVE | | | NOT REGULATED | |
| 88 | ACOELORRHAPHE | PAUROTIS PALM | 4 | 25 | 6 | | | REMOVE | | | NOT REGULATED | |
| 89 | COCOS NUCIFERA | COCONUT PALM | 10 | 37 | 9 | | | REMAIN | | | | |
| | | | | | | | | | | | | |
| | | | | | | | | | | | | |
| FROM PROPOSED PLANTING | | | | | | | | | | | | |
| TOTAL UNITS TO BE REMOVED: | | | | | | | | | 29 | 24 | inches | |
| TOTAL ESTIMATED REQUIRED ON SITE MITIGATION PER CODE (2"DBH/12HT): | | | | | | | | | 32 | | trees | |
| PROPOSED ON SITE MITIGATION BREAKDOWN | | | | | | | | | | | TREE CREDIT | |
| CANOPY TREE I- 2"DBH/12'HT MIN: | | | | | | | | | 124 | | | 124 |
| CANOPY TREE II- 4"DBH/16'HT MIN: | | | | | | | | | 23 | | one CT II is equal to two CT I | 46 |
| NATIVE - 1.5"DBH/10'HT MIN: | | | | | | | | | 0 | | up to 30% of required CT I | 0 |
| PALMS- 3"DBH/14'HT MIN: | | | | | | | | | 0 | | up to 30% of required CT I at 2 palm/tree | 0 |
| TOTAL PROPOSED REPLACEMENT TREES (REFER TO PLANTING PLANS): | | | | | | | | | 147 | | OMBINATION FULFILLS SITE MITIGATION OI | 170 |

Trees to be Preserved Notes

1.

EXISTING TREES TO BE PRESERVED SHALL BEAR SAME RELATIONSHIP TO FINISHED GRADE AS THEY BEAR TO PRE-CONSTRUCTION GRADE.
2.

EXISTING TREES TO BE PRESERVED SHALL BE PROTECTED WITH STURDY, WEATHERPROOF FENCING AT A MINIMUM FOUR (4) FEET HEIGHT INSTALLED NO CLOSER TO THE TREE TRUNK THAN ITS DRIPLINE. THIS FENCE SHALL BE MAINTAINED IN WORKING ORDER DURING ALL PHASES OF CONSTRUCTION. MAINTAIN TREE PROTECTION ZONES FREE OF WEEDS AND TRASH.
3.

NO WORK SHALL BE CONDUCTED WITHIN THE DRIPLINE, UNLESS REVIEWED AND APPROVED BY THE LANDSCAPE ARCHITECT. ALL WORK APPROVED WITHIN THE DRIPLINE SHALL BE COMPLETED BY HAND. PROTECT ROOT SYSTEMS FROM PONDING, ERODING, OR EXCESSIVE WETTING.
4.

THE PROJECT LIMIT OF CONSTRUCTION AND ALL EXISTING VEGETATION TO REMAIN IS TO BE CLEARLY DEFINED BY STURDY, WEATHERPROOF FENCING AT A MINIMUM OF FOUR (4) FEET HIGH.

Trees to be Relocated Notes

1.

THE CONTRACTOR IS TO ROOT PRUNE ALL PLANT MATERIAL 90 DAYS MINIMUM IN ADVANCE OF MOVING PLANT MATERIAL.
2.

THE CONTRACTOR IS TO WARRANTY ALL RELOCATED PLANT MATERIAL.
3.

THE CONTRACTOR IS RESPONSIBLE FOR THE WATERING AND FERTILIZING OF ALL PLANT RELOCATED PLANT MATERIAL UNTIL PROJECT COMPLETION.
4.

ALL RELOCATED PLANT MATERIAL IS TO BE APPROPRIATELY BRACED.
5.

CONTRACTOR TO NOTIFY LANDSCAPE ARCHITECT TWO WEEKS IN ADVANCE OF ALL SCHEDULED WORK PERTAINING TO THE RELOCATION OF SITE TREES.

Trees to be Removed Notes

1.

THE CONTRACTOR IS TO COMPLETELY REMOVE ALL PLANTER MATERIAL DESIGNATED FOR REMOVAL (I.E. ROOT BALL, DEBRIS, SAW DUST, ETC.).
2.

THE CONTRACTOR IS TO BACKFILL ALL EXCAVATED ROOT BALLS FLUSH TO THE ADJACENT ELEVATION LEVEL.
3.

CONTRACTOR TO NOTIFY LANDSCAPE ARCHITECT TWO WEEKS IN ADVANCE OF ALL SCHEDULED WORK PERTAINING TO THE RELOCATION OF SITE TREES.

City's Tree replacement Chart

- DIVERSITY OF REQUIRED TREE SPECIES. IN ORDER TO AVOID A MONO-SPECIES APPEARANCE AND TO CIRCUMVENT SIGNIFICANT TREE LOSS DUE TO DISEASE TO A SPECIFIC TREE SPECIES, THE NUMBER OF DIFFERENT TREE SPECIES TO BE PLANTED IS AS FOLLOWS:
- A.

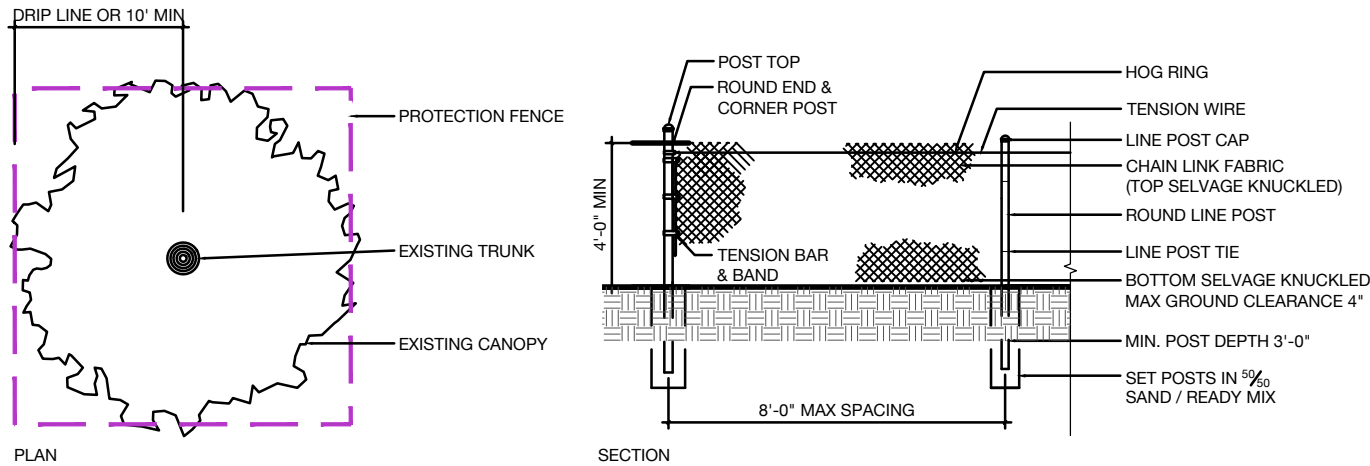
1 TO 5 REQUIRED TREES : 2 TREES SPECIES
- B.

6 TO 10 REQUIRED TREES: 3 TREE SPECIES
- C.

11 TO 15 REQUIRED TREES: 4 TREE SPECIES
- D.

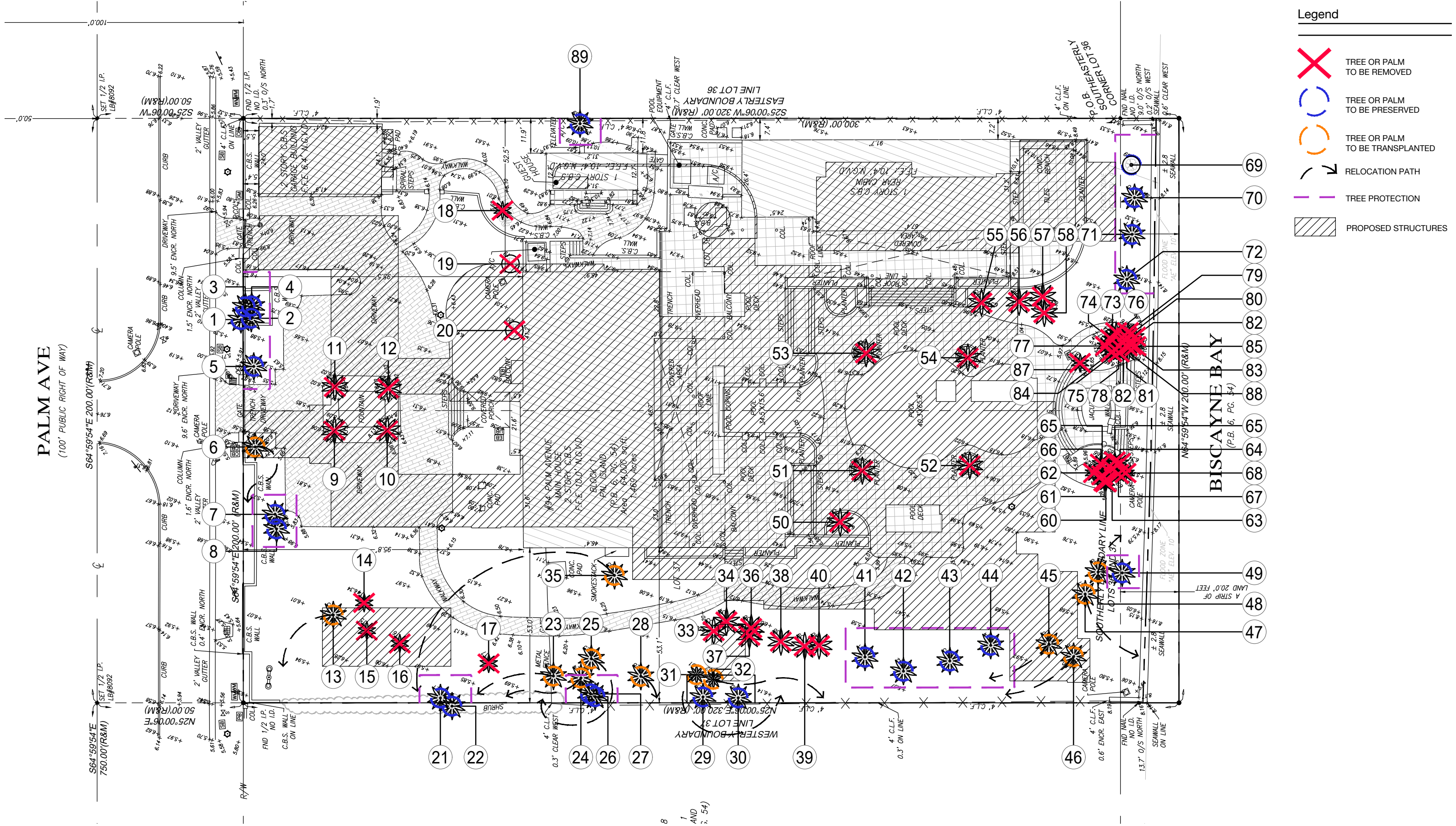
16 TO 20 REQUIRED TREES: 5 TREE SPECIES
- R.

21 TO 30 REQUIRED TREES: 6 TREE SPECIES



NOTES:

- PROTECTION FENCE SHALL BE GALVANIZED CHAIN LINK STANDARD 2" x 2" MESH
- PROVIDE HINGED GATE
- ALTERNATE: 2" x 4" WOOD POSTS (6'-0" O.C. MAX) WITH THREE EVENLY SPACED WOODEN RAILS. MIN. HT 4'
- POSTS MAY BE SHIFTED TO AVOID ROOTS
- NO STORAGE, DEBRIS, VEHICULAR TRAFFIC OR EQUIPMENT CLEANING IS ALLOWED WITHIN THE PROTECTED AREA.
- REFER TO MUNICIPAL REQUIREMENTS FOR ADDITIONAL INFORMATION



94 Palm Residence
94 PALM AVENUE, MIAMI BEACH, FL 33139



A

CONCRETE SEA SHELL FINISH

COLOR: Grey

LOCATION: Driveway

SPECS:: Smooth Sea Shell Finnish

SOURCE: TBD



B

LIMESTONE PAVERS

COLOR: Natural

LOCATION: Outdoor Terraces

SPECS:: 36" x 48" Units

SOURCE: TBD



C

GRASS BLOCK

COLOR: Natural

LOCATION: Driveway

SPECS:: Per Manufacturer

SOURCE: TBD



D

CRUSHED COQUINA FINES

COLOR: Natural

LOCATION: Pedestrian Circulation

SPECS:: 1" - 3" Ø Average

SOURCE: TBD



E

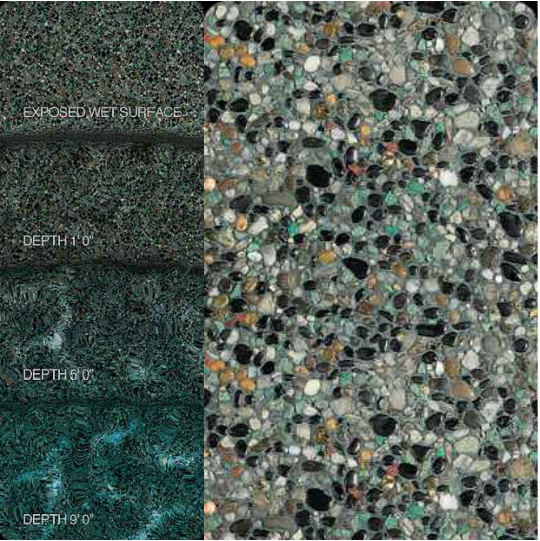
POOL FINISH

COLOR: French Grey

LOCATION: Pool - Spa

SPECS:: Per Manufacturer

SOURCE: PEEBLETEC
www.peebletec.com



F

WATER FEATURE FINISH

COLOR: Midnight Blue

LOCATION: Water Feature

SPECS:: Per Manufacturer

SOURCE: PEEBLETEC
www.peebletec.com

94 Palm Residence

94 PALM AVENUE, MIAMI BEACH, FL 33139

L & N D

www.land.design

Legend

- MATERIAL A
- MATERIAL B
- MATERIAL C
- MATERIAL D
- POOL, SPA & WATER FEATURE
- LAWN AREA
- SAND AREA
- LANDSCAPE AREA

94 Palm Residence

94 PALM AVENUE, MIAMI BEACH, FL 33139

L & N D

www.land.design

L210

MATERIALS PLAN

DRB SET | 07/05/2024 | @ COPYRIGHT L&ND

94 Palm Residence

94 PALM AVENUE, MIAMI BEACH, FL 33139

L & N D

www.land.design

L210

MATERIALS PLAN

DRB SET | 07/05/2024 | @ COPYRIGHT L&ND

Planting Schedule

| ABR | QTTY | BOTANICAL NAME | COMMON NAME | SPECIFICATIONS | NATIVE |
|-------------------------------|---------|----------------------------|-------------------------|-----------------------|--------|
| TREES | | | | | |
| CRO | 12 | CLUSIA ROSEA | AUTOGRAPH TREE | 16' X 16' MULTI TRUNK | ● |
| CUV | 5 | COCOLOBA UVIFERA | SEA GRAPE | 20' X 20' MULTI TRUNK | ● |
| STREET TREES | | | | | |
| BSI | 6 | BURSERA SIMARUBA | GUMBO LIMBO | 20' X 10' / 6" DBH | ● |
| NUT (NATIVE UNDERSTORY TREES) | | | | | |
| CCY | 25 | CAPPARIS CYNOPHALLOPHORA | JAMAICAN CAPPER | 12' HT / 2" DBH | ● |
| CWI | 24 | CANELLA WINTERANA | CINNAMON BARK | 12' HT / 2" DBH | ● |
| COE | 25 | CONOCARPUS ERECTUS | GREEN BUTTOM WOOD | 12' HT / 2" DBH | ● |
| PDI | 25 | PIMENTA DIOICA | ALLPSICE | 12' HT / 2" DBH | ● |
| PRA | 25 | PIMENTA RACEMOSA | BAY RUM | 12' HT / 2" DBH | ● |
| PALMS | | | | | |
| AAL | 3 | ARCHONTOPHOENIX ALEXANDRAE | ALEXANDER PALM | FG 20' CT | |
| AAL | 3 | ARCHONTOPHOENIX ALEXANDRAE | ALEXANDER PALM | FG 25' CT | |
| AAL | 3 | ARCHONTOPHOENIX ALEXANDRAE | ALEXANDER PALM | FG 30' CT | |
| BNO | 2 | BISMARKIA NOBILIS | BISMARK PALM | FG 20' CT | |
| CNU1 | 5 | COCOS NUCIFERA | COCONUT PALM | FG 15' CT | |
| CNU2 | 6 | COCOS NUCIFERA | COCONUT PALM | FG 20' CT | |
| CNU3 | 6 | COCOS NUCIFERA | COCONUT PALM | FG 25' CT | |
| EGU | 1 | ELAEIS GUINEENSIS | OIL PALM | FG 25' HT | |
| RRE1 | 2 | ROYSTONEA REGIA | ROYAL PALM | FG 20' CT | ● |
| RRE2 | 3 | ROYSTONEA REGIA | ROYAL PALM | FG 25' CT | ● |
| RRE3 | 3 | ROYSTONEA REGIA | ROYAL PALM | FG 30' CT | ● |
| SPA1 | 3 | SABAL PALMETTO | SABAL PALM | FG 20' CT | ● |
| SPA2 | 3 | SABAL PALMETTO | SABAL PALM | FG 25' CT | ● |
| SPA3 | 3 | SABAL PALMETTO | SABAL PALM | FG 30' CT | ● |
| TRA1 | 3 | THRINAX RADIATA | FLORIDA THATCH PALM | FG 10' CT | ● |
| TRA2 | 3 | THRINAX RADIATA | FLORIDA THATCH PALM | FG 12' CT | ● |
| TRA3 | 3 | THRINAX RADIATA | FLORIDA THATCH PALM | FG 15' CT | ● |
| BAMBOO | | | | | |
| BTE | 26 | BAMBUSA TEXTILIS | BAMBOO | 45 GAL / FG 12' HT | |
| SHRUBS & GROUNDCOVERS | | | | | |
| AD | 552 | ASPARAGUS DENSIFLORUS | FOXTAIL FERN | 1 GAL / 24" O.C. | |
| AL | 169 | ALOCASSIA PORTORA | ELEPHANT EARS | 7 GAL / 36" O.C. | |
| CI | 703 | CHRYSOBALANUS ICACO | COCOPLUM | 7 GAL / 24" O.C. | ● |
| LM | 3063 | LIRIOPE MUSCARI | LILYTURF | 1 GAL / 12" O.C. | |
| MD | 292 | MONSTERA DELICIOSA | SWISS CHEESE PLANT | 3 GAL / 36" O.C. | |
| NF | 431 | NEPHROLEPIS FALCATA | MACHO FERN | 3 GAL / 36" O.C. | |
| PB | 948 | PHILODENDRON BURLE MARX | BURLE MARX PHILODENDRON | 3 GAL / 18" O.C. | ● |
| PS | 1371 | PHYMATOSORUS SCOLOPENDRIA | WART FERN | 3 GAL / 18" O.C. | ● |
| GRASSES | | | | | |
| PA | 94 | PENNISETUM ALOPECUROIDES | FOUNTAIN GRASS | 3 GAL / 36" O.C. | |
| TD | 63 | TRIPSACUM DACTYLOIDES | FAKAHATCHEE GRASS | 3 GAL / 36" O.C. | ● |
| ZJ | 1198 SF | ZOYSIA JAPONICA | ZOYSIA GRASS | SOD | |

Landscape Legend

| | | | |
|--|--|-------------------------|----------------------|
| MUNICIPALITY: <u>City of Miami Beach</u> | | | |
| ZONING CLASS: RS-1 | | LOT AREA: <u>62,082</u> | ACRES: <u>1.4252</u> |
| ORDINANCE/CODE SECTION: CITY OF MIAMI BEACH SECTION 126 | | | |
| OPEN SPACE | | REQUIRED/ ALLOWED | PROVIDED |
| A. | Sq. Ft. of required Open Space Lot area: <u>62,082</u> Multiplier: <u>30%</u> | <u>18,625</u> | <u>18,619</u> |
| B. | Sq. Ft. of parking lot open space Parking Spaces: <u>2</u> Multiplier: <u>10</u> sf/space | <u>20</u> | <u>20</u> |
| C. | Total Sq. Ft. of Landscaped Open Space required | <u>18,645</u> | <u>18,639</u> |
| LAWN AREA | | | |
| A. | Total Sq. Ft. of landscaped Open Space | <u>18,645</u> | <u>18,639</u> |
| B. | Maximum Lawn Area (sod) permitted- Open space required: <u>18,645</u> Multiplier: <u>20%</u> | <u>3,729</u> | <u>1,114</u> |
| TREES | | | |
| A. | Number of trees required per lot, less existing trees Required Trees/Lot: <u>5</u> Net lot acres: <u>1.4252</u> Required Trees: <u>56</u> Existing trees: <u>0</u> | <u>61</u> | <u>61</u> |
| B. | % Palms allowed Trees provided: <u>61</u> Multiplier: <u>0%</u> | <u>0</u> | <u>0</u> |
| PER CODE SECTION 126-6.C.10 PALMS DO NOT COUNT TOWARD MIN. TREE REQUIREMENTS | | | |
| C. | % Native required Trees provided: <u>61</u> Multiplier: <u>30%</u> | <u>18</u> | <u>18</u> |
| D. | % Drought tolerant and low maintenance species required Trees provided: <u>61</u> Multiplier: <u>50%</u> | <u>31</u> | <u>31</u> |

STREET TREES

| | | | |
|---|---|-----------|----------|
| NO WORK IN THE ROW INCLUDED IN THIS SCOPE | | | |
| A. | Street trees (maximum average spacing of 20' o.c.) Linear ft of street frontage: <u>200</u> Multiplier: <u>20</u> Existing trees: <u>0</u> | <u>10</u> | <u>6</u> |
| B. | Street trees directly below power lines Linear ft of street frontage: <u>20</u> Multiplier: <u>20</u> | <u>1</u> | <u>0</u> |

SHRUBS

| | | | |
|----|--|------------|------------|
| A. | Number of shrubs required Lot and street trees required: <u>71</u> Multiplier: <u>12</u> | <u>264</u> | <u>264</u> |
| B. | % Native species required Shrubs provided: <u>264</u> Multiplier: <u>50%</u> | <u>132</u> | <u>132</u> |

LARGE SHRUBS OR SMALL TREES

| | | | |
|----|--|-----------|-----------|
| A. | Number of shrubs or small tree required Shrubs required: <u>264</u> Multiplier: <u>10%</u> | <u>27</u> | <u>27</u> |
| B. | % Native species required Shrubs provided: <u>27</u> Multiplier: <u>50%</u> | <u>14</u> | <u>14</u> |

94 Palm Residence

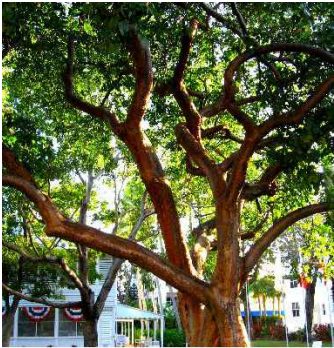
94 PALM AVENUE, MIAMI BEACH, FL 33139



CRO
CLUSIA ROSEA
AUTOGRAPH TREE



CUV
COCOLOBA UVIFERA
SEA GRAPE



BSI
BURSERA SIMARUBA
GUMBO LIMBO



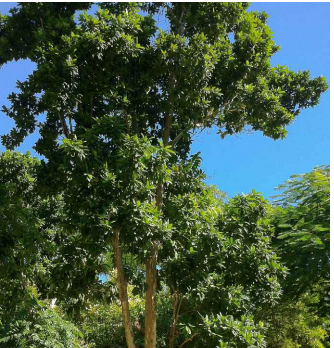
CCY
CAPPARIS
CYNOPHALLOPHORA
JAMAICA CAPER



CWI
CANELLA WINTERANA
CINNAMON BARK



COE
CONOCARPUS ERECTUS
SILVER BUTTONWOOD



PDI
PIMENTA DIOICA
ALLSPICE



PRA
PIMENTA RACEMOSA
BAY RUM



AAL
ARCHONTOPHOENIX
ALEXANDRAE
ALEANDER PALM



BNO
BISMARKIA NOBILIS
BISMARK PALM



CNU
COCOS NUCIFERA
COCONUT PALM



EGU
ELAESIS GUINEENSIS
OIL PALM



RRE
ROYSTONIA REGIA
ROYAL PALM



SPA
SABAL PALMETTO
SABAL PALM



TRA
THRINAX RADIATA
THATCH PALM



BTE
BAMBUA TEXTILIS
BAMBOO



AD
ASPARAGUS DENSIFLORUS
FOXTAIL FERN



AL
ALOCASSIA PORTORA
ELEPHANT EARS



CI
CHRYSOBALANUS ICACO
COCOPLUM



LM
LIRIOPE MUSCARI
LILYTURF



MD
MONSTERA DELILCIOSA
SWISS CHEESE PLANT



NF
NEPHROLEPIS FALCATA
MACHO FERN



PB
PHILODRENDRON BURLE MARX
BURLE MARX PHILODENDRON



PS
PHYMATOSORUS SP
WART FERN



PA
PENNISETUM ALOPECUROIDES
FOUNTAIN GRASS



TD
TRIPSACUM DACTYLOIDES
FAKAHATCHEE GRASS



ZJ
ZOYSIA JAPONICA
ZOYSIA GRASS

94 Palm Residence

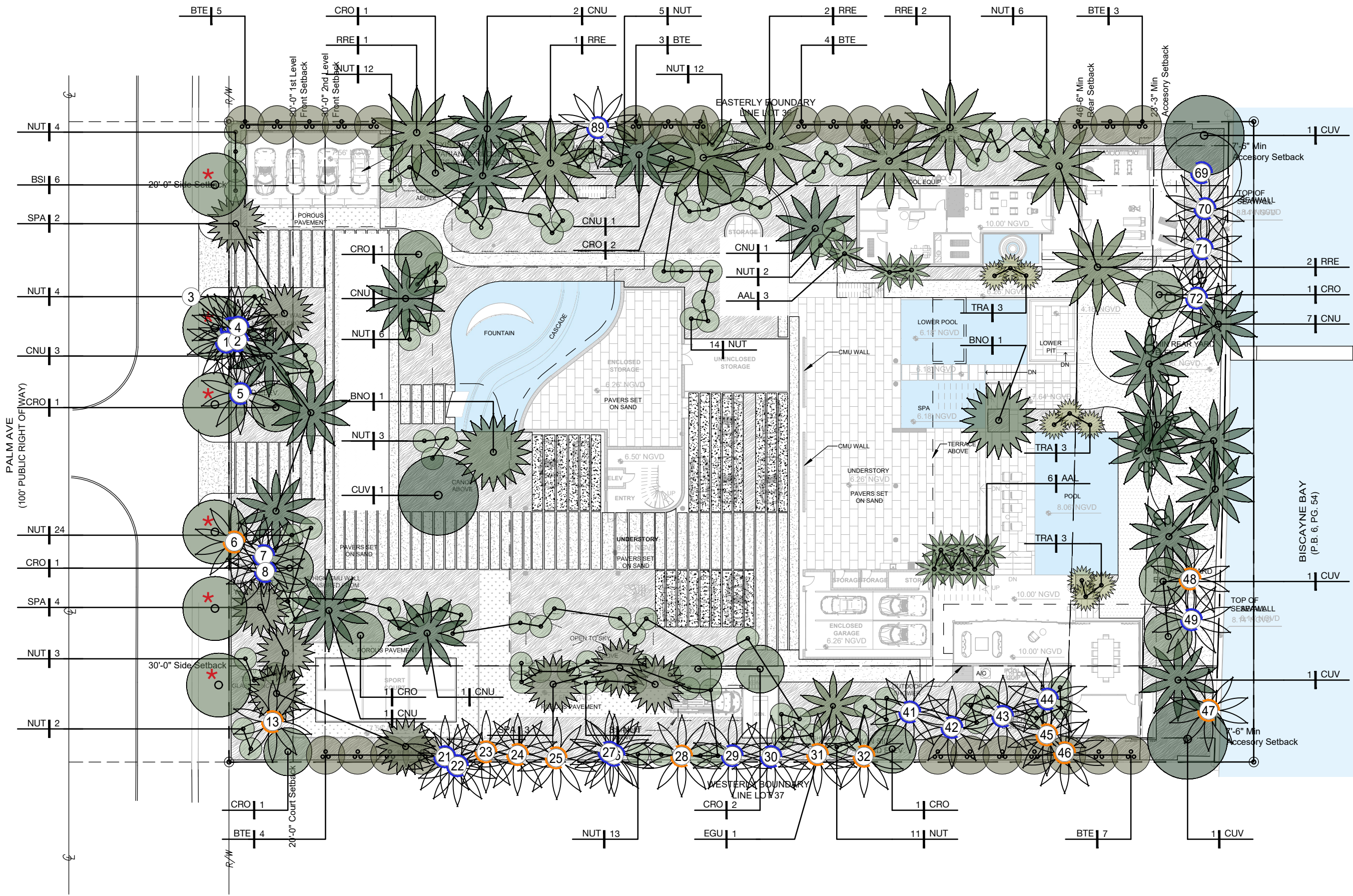
94 PALM AVENUE, MIAMI BEACH, FL 33139

94 Palm Residence

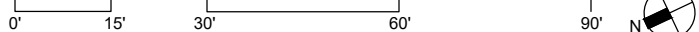
94 PALM AVENUE, MIAMI BEACH, FL 33139

L & N D

www.land.design



Scale 1" = 30'-0"



L410

TREES & PALMS PLANTING PLAN

DRB SET | 07/05/2024 | @ COPYRIGHT L&ND

