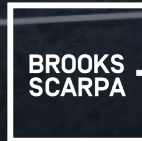


MIAMI BEACH 41 STREET CORRIDOR REVITALIZATION PROJECT

DESIGN REVIEW BOARD PRESENTATION
JULY 2, 2024



MIAMI BEACH

SCOPE OF WORK



EXISTING CONDITIONS

EXISTING CHALLENGES



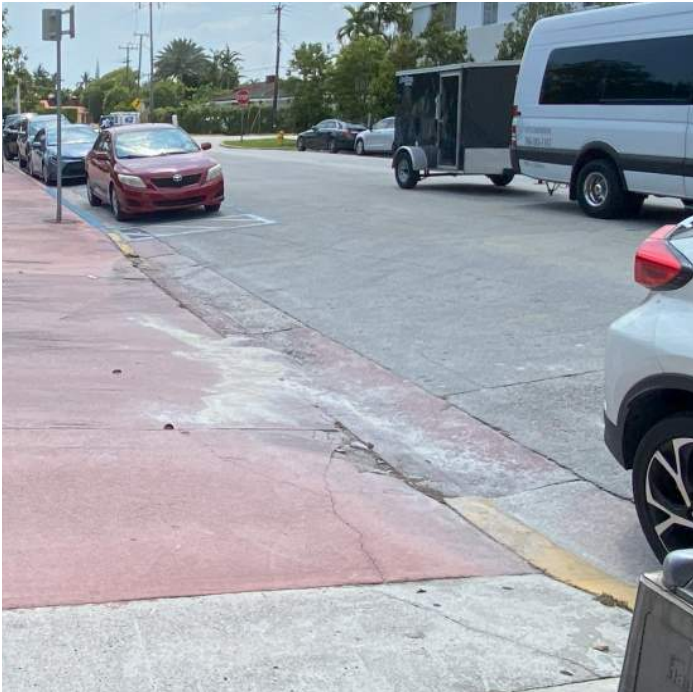
LOOSE CONCRETE PAVER



INAPPROPRIATE LANDSCAPING



ACCESSIBILITY ISSUES



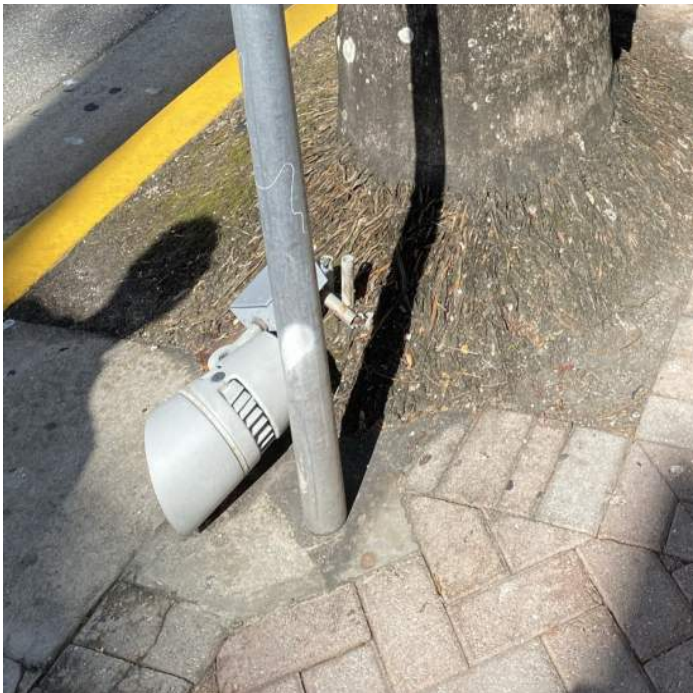
BROKEN PAVEMENT



UNSAFE WIRING



OUTDATED STREET LAMPS



BROKEN LIGHT FIXTURES



DAMAGED SIDE-STREETS

41ST STREET REVITALIZATION PLAN

EXISTING SITE PLAN



30% DESIGN SITE PLAN



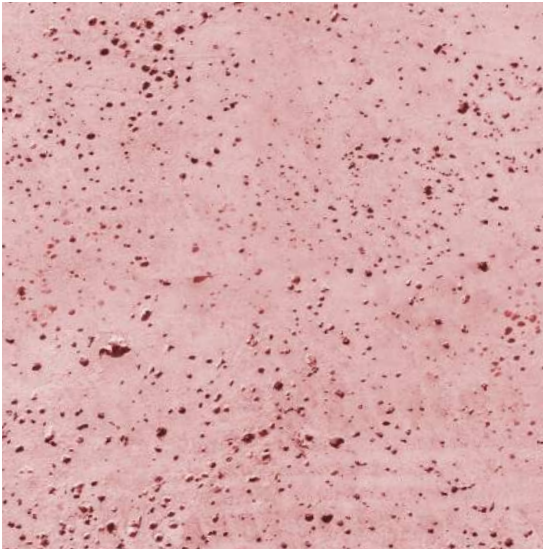
60% DESIGN SITE PLAN



60% DESIGN SITE PLAN



KIT OF PARTS



Miami Beach Red Concrete



Branded Concrete



Public Art



Bike Racks



Benches



Shade Trees



Landscaping



Precast Seat Walls



Trash Receptacles



Bus Stops

PROPOSED PLANTING PALETTE

EXISTING CANOPY



Royal Palm
Roystonea regia



Strangler Fig
Ficus aurea



Green Buttonwood
Conocarpus erectus

IF THE ROOT OF AN EXISTING ROYAL PALM ARE AT GRADE, THEN METAL GRATING BECOMES THE PRIMARY TOOL TO PROTECT THE TREE AND EXPAND THE WALKS



EXISTING



PROPOSED

LARGE CANOPY



Live Oak
Quercus virginiana



Green Buttonwood
Conocarpus erectus



Gumbo Limbo
Bursera simaruba



Mahogany Tree
Swietenia mahogani



Wild Tamarind
Lysiloma latisiliquum

MEDIUM CANOPY



Silver Buttonwood
Conocarpus erectus



Pigeon Plum
Coccoloba diversifolia



Autograph Tree
Clusia rosea

GROUND COVERS



Wart Fern
Phymatosorus scolopendria



Philodendron 'Burle-Marx'
Philodendron burle-marxii



Monstera
Monstera deliciosa



Dwarf palmetto
Sabal minor



Muhly Grass
Muhlenbergia capillaris



Milkweed
Asclepias syriaca



Spartina Grass
Spartina



Fakahatchee Grass
Tripsacum dactyloides



Perennial Peanut
Arachis glabrata

SUSTAINABILITY

- Combating Heat Island effect with light materials

EXISTING FURNITURE



Benches

REFINISHED STREET FURNITURE



Stainless Steel/
Aluminum Mill Finish

PROPOSED FURNITURE

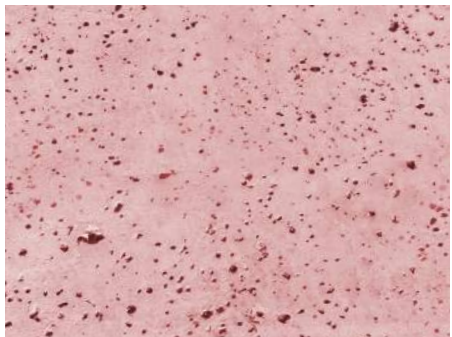


Landscape Forms
Milenio



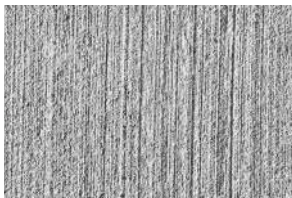
Wausau
Seat Walls

PRECAST SEAT WALLS

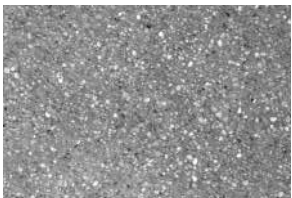


Miami Beach Red Concrete

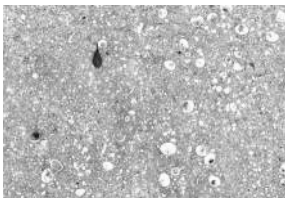
PROPOSED PAVING
MATERIAL



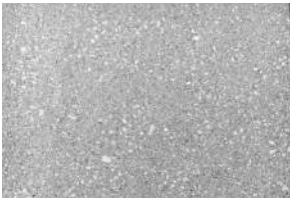
Broom Finish



Exposed Aggregate



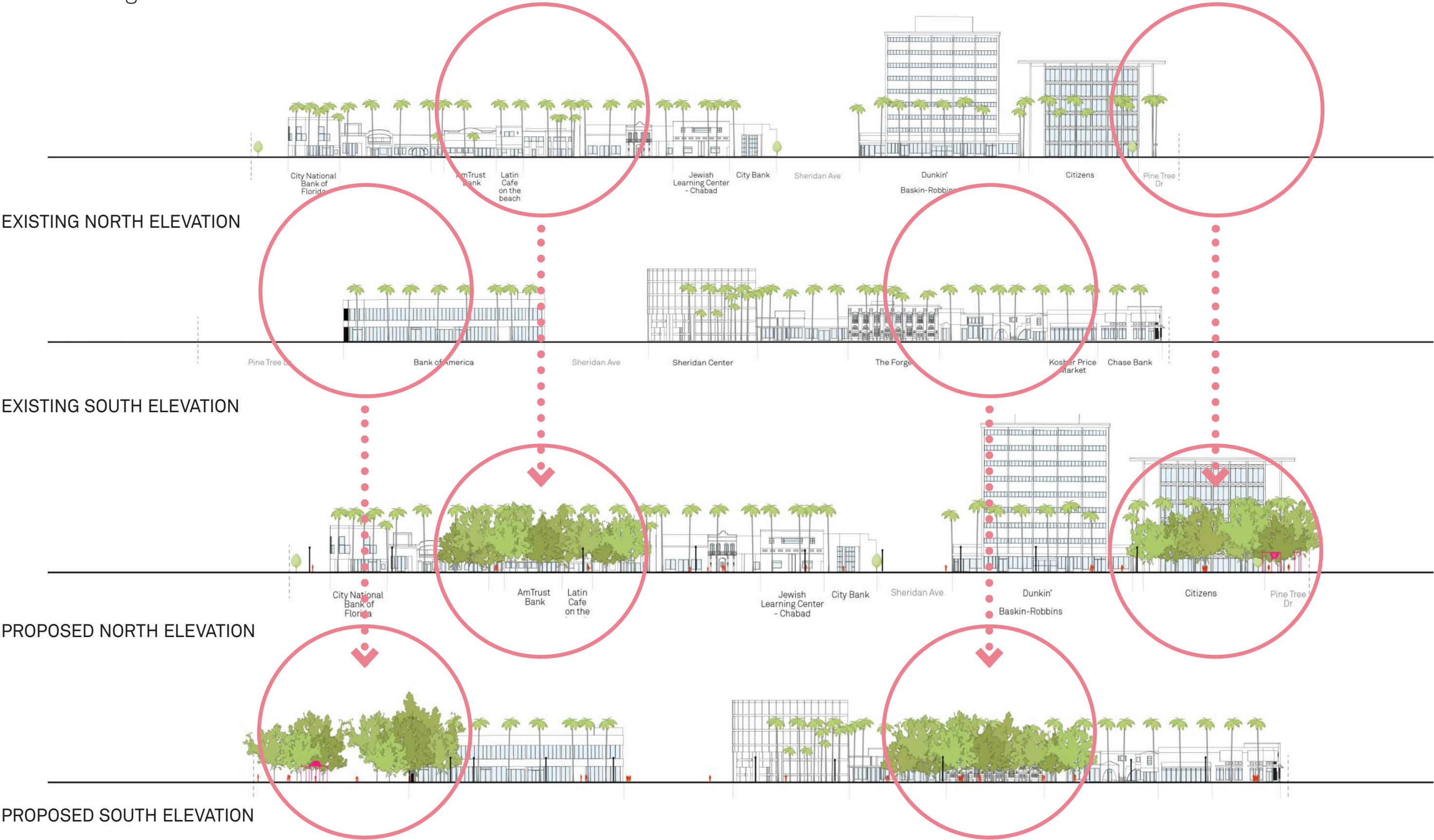
Seashell Aggregate



Light Sandblasted

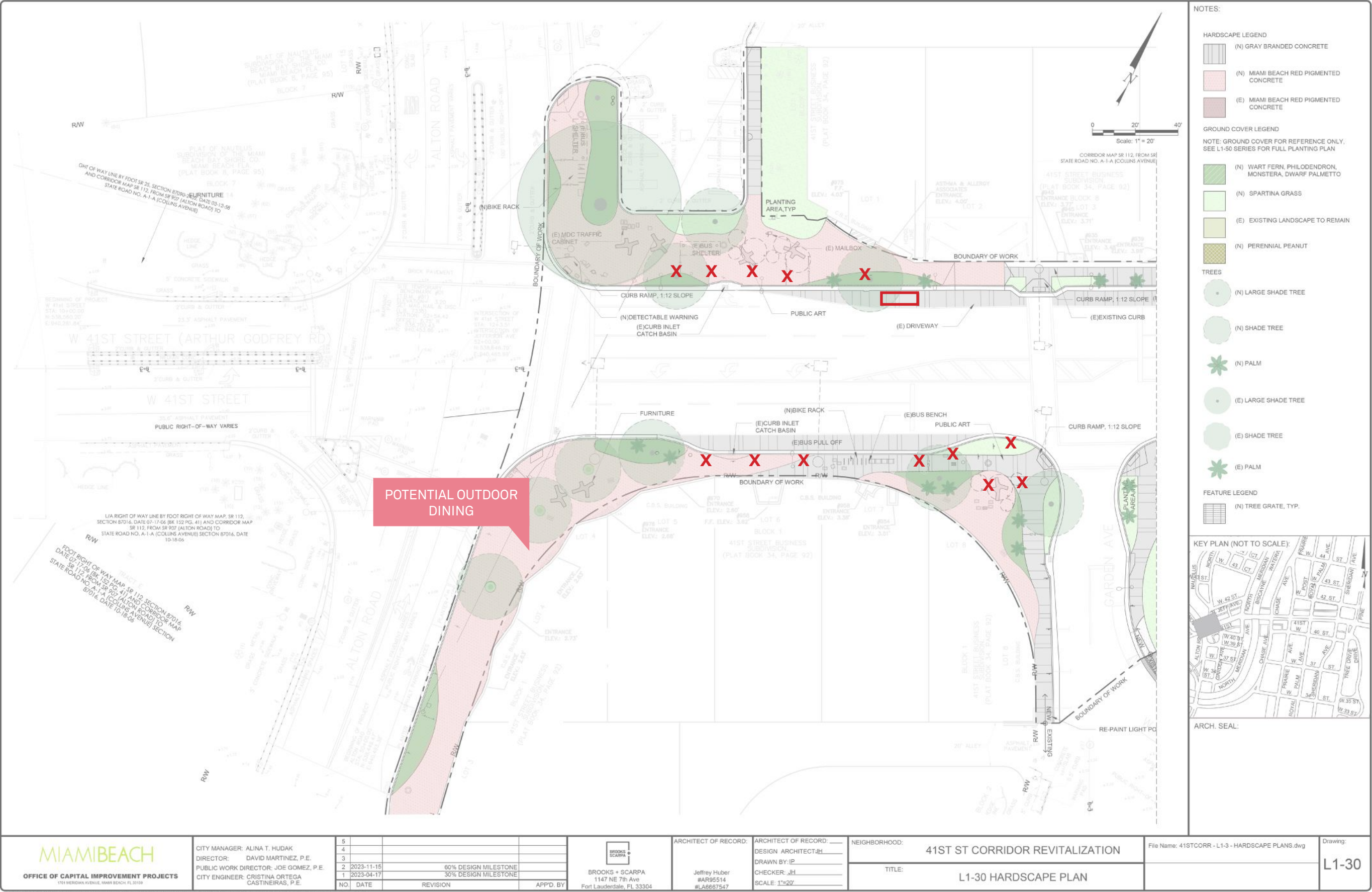
SUSTAINABILITY

- Combating Heat Island effect with shade trees



MIAMI BEACH OFFICE OF CAPITAL IMPROVEMENT PROJECTS 1701 N. BAYVIEW AVENUE, SUITE 1000, MIAMI BEACH, FL 33139		CITY MANAGER: ALINA T. HUDAK DIRECTOR: DAVID MARTINEZ, P.E. PUBLIC WORK DIRECTOR: JOE GOMEZ, P.E. CITY ENGINEER: CRISTINA ORTEGA CASTINEIRAS, P.E.		<table border="1"> <tr> <th>NO.</th><th>DATE</th><th>REVISION</th><th>APPD. BY</th></tr> <tr> <td>5</td><td></td><td></td><td></td></tr> <tr> <td>4</td><td></td><td></td><td></td></tr> <tr> <td>3</td><td></td><td></td><td></td></tr> <tr> <td>2</td><td>2023-11-15</td><td>60% DESIGN MILESTONE</td><td></td></tr> <tr> <td>1</td><td>2023-04-17</td><td>30% DESIGN MILESTONE</td><td></td></tr> </table>		NO.	DATE	REVISION	APPD. BY	5				4				3				2	2023-11-15	60% DESIGN MILESTONE		1	2023-04-17	30% DESIGN MILESTONE		BROOKS + SCARPA 1147 NE 7th Ave Fort Lauderdale, FL 33304 Jeffrey Huber #AR95514 #LA6667547		ARCHITECT OF RECORD: _____ DESIGN ARCHITECT: JH DRAWN BY: IP CHECKER: JH SCALE: 1"=20'		NEIGHBORHOOD: 41ST ST CORRIDOR REVITALIZATION TITLE: L1-30 HARDSCAPE PLAN		File Name: 41STCORR - L1-3 - HARDSCAPE PLANS.dwg Drawing: L1-30
NO.	DATE	REVISION	APPD. BY																																	
5																																				
4																																				
3																																				
2	2023-11-15	60% DESIGN MILESTONE																																		
1	2023-04-17	30% DESIGN MILESTONE																																		

CURRENT DESIGN - ALTON ROAD









PRECEDENTS

PROPOSED PUBLIC ART AND GATEWAY FEATURES



Miami Beach Soundscape
West 8



Miami Design District
Bouroullec Brothers



Firefly - moving wall
Ned Kahn



Gateway Pavilion
Pembroke Pines, FL



CAM Museum of Art
Raleigh, NC



Proposed Gateway Art Feature
Bent pipe, metal mesh, marine grade paint



NOTES:

HARDSCAPE LEGEND

- (N) GRAY BRANDED CONCRETE
- (N) MIAMI BEACH RED PIGMENTED CONCRETE
- (E) MIAMI BEACH RED PIGMENTED CONCRETE

GROUND COVER LEGEND

NOTE: GROUND COVER FOR REFERENCE ONLY, SEE L1-50 SERIES FOR FULL PLANTING PLAN

- (N) WART FERN, PHILODENDRON, MONSTERA, DWARF PALMETTO
- (N) SPARTINA GRASS
- (E) EXISTING LANDSCAPE TO REMAIN
- (N) PERENNIAL PEANUT

TREES

- (N) LARGE SHADE TREE
- (N) SHADE TREE
- (N) PALM
- (E) LARGE SHADE TREE
- (E) SHADE TREE
- (E) PALM

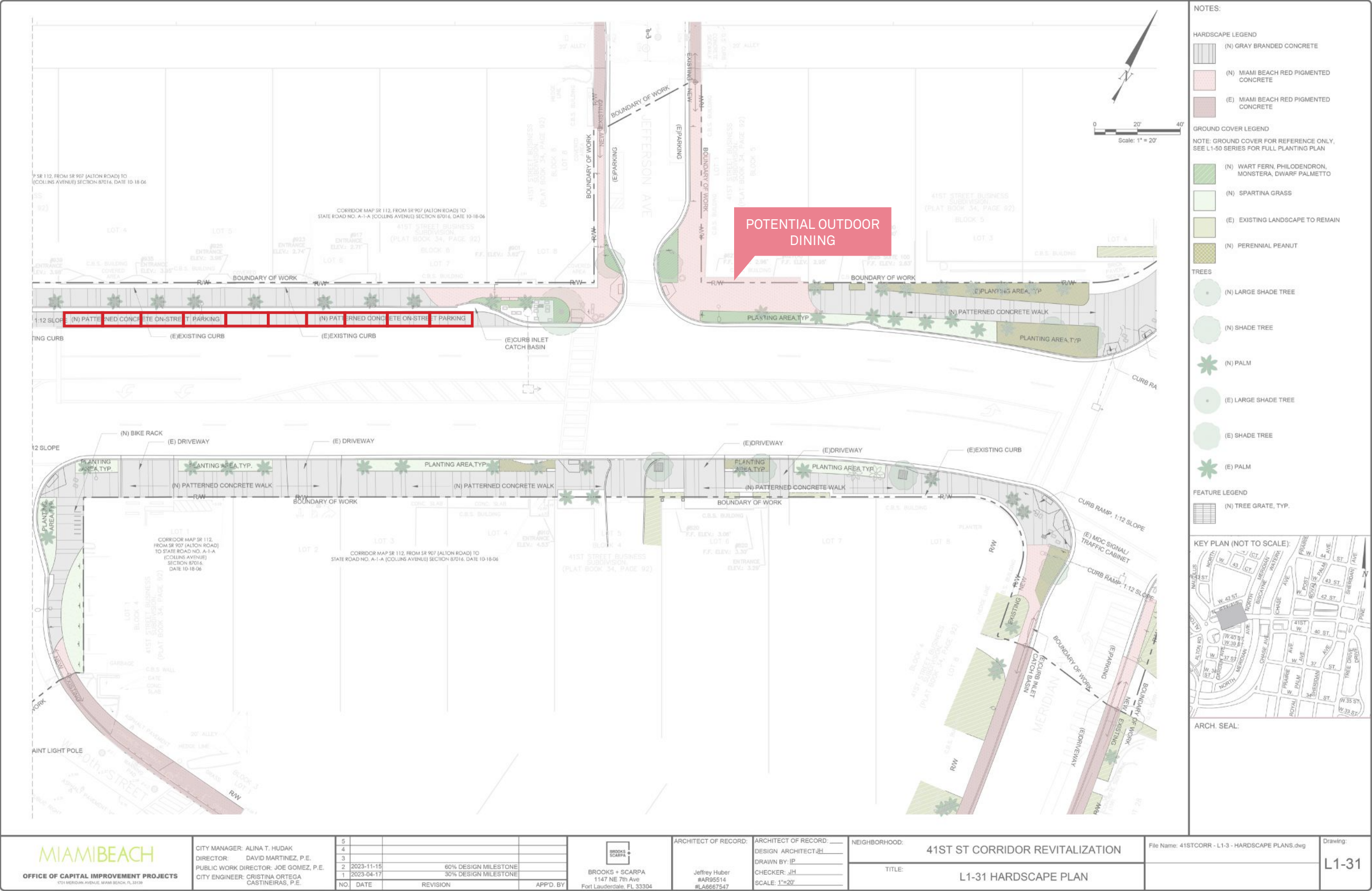
FEATURE LEGEND

- (N) TREE GRATE, TYP.

KEY PLAN (NOT TO SCALE):

ARCH. SEAL:

CURRENT DESIGN - JEFFERSON AVE.



EXISTING



PROPOSED
AECOM



Bus Bay





LIGHTING OPTION 1



LIGHTING OPTION 2

EXHIBIT A



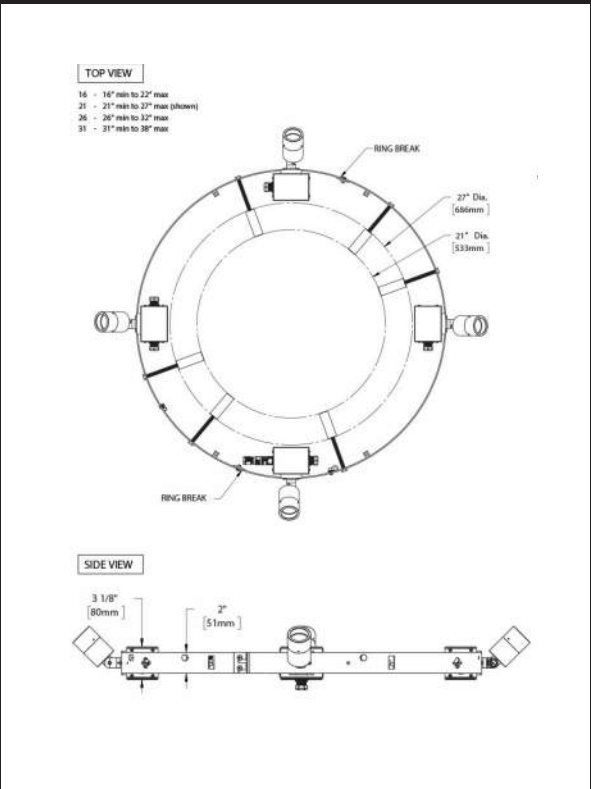
LIGHTING OPTION 3



LIGHTING OPTIONS | WALKS

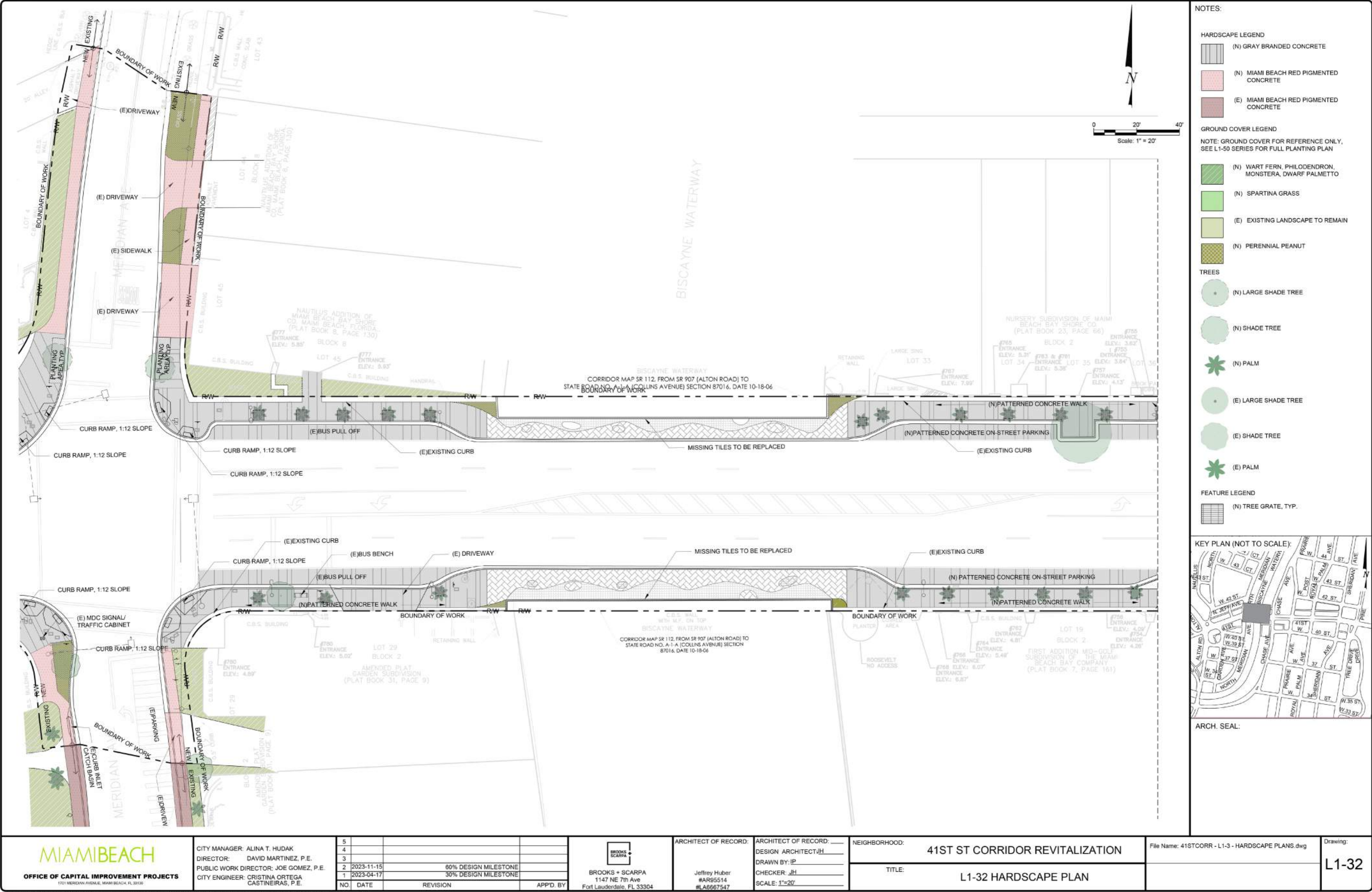
- Four adjustable ring sizes
- Remote or integral power supply
- Tree-friendly mounting
- 1/8” stainless steel construction

ACCENT LIGHTS



B-K LIGHTING
PALM TREE RING

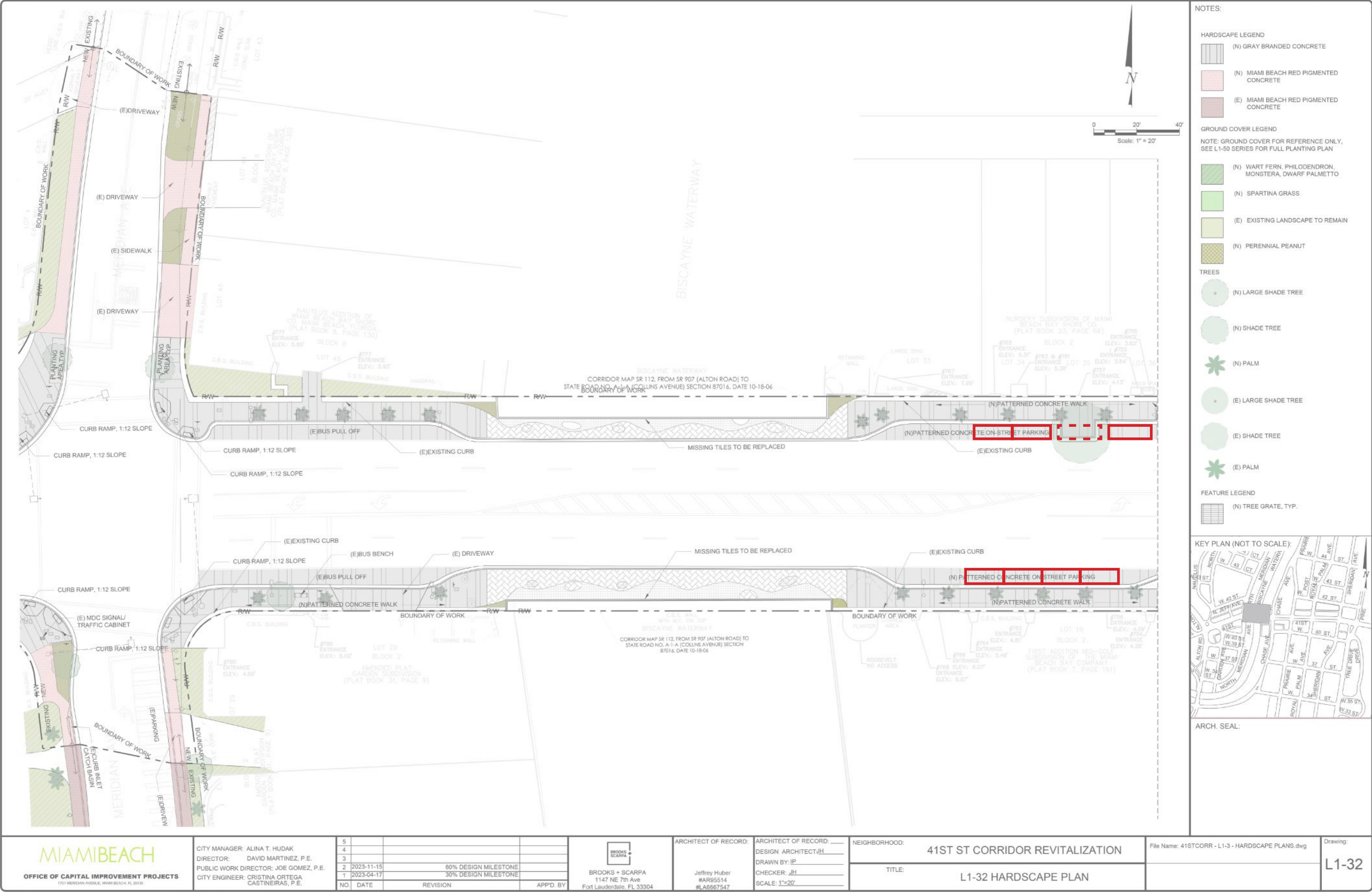
CURRENT DESIGN - BRIDGE OVER BISCAIYNE WATERWAY



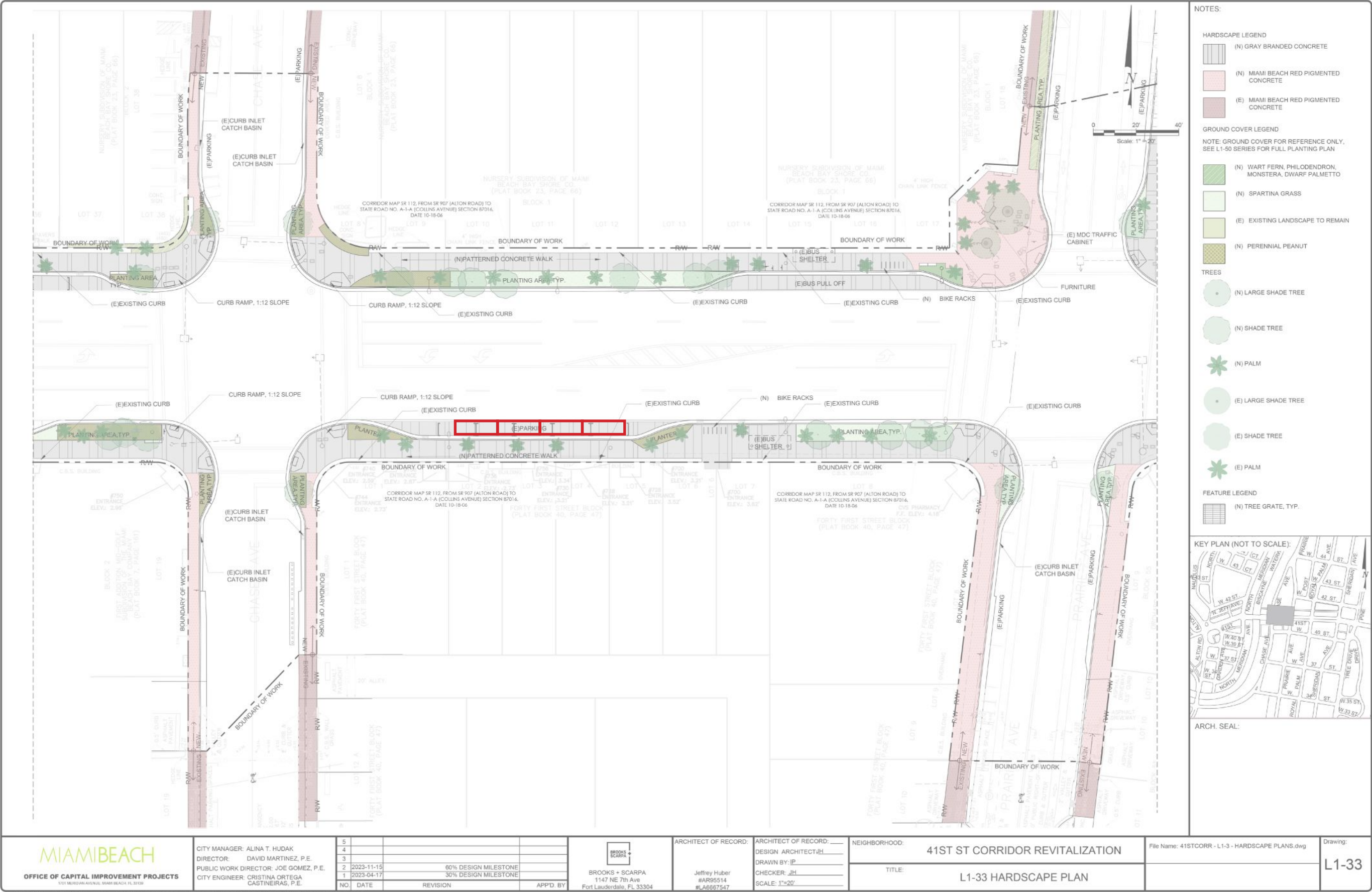
THIS SPACE RESERVED FOR PROJECT MILESTONE

<div><div>MIAMI BEACH</div><div>OFFICE OF CAPITAL IMPROVEMENT PROJECTS</div><div>1701 MERIDIAN AVENUE, MIAMI BEACH, FL 33139</div></div>	CITY MANAGER: ALINA T. HUDAK DIRECTOR: DAVID MARTINEZ, P.E. PUBLIC WORK DIRECTOR: JOE GOMEZ, P.E. CITY ENGINEER: CRISTINA ORTEGA CASTAINEIRAS, P.E.	5				<div><div>BROOKS + SCARPA</div><div>BROOKS + SCARPA</div><div>1147 NE 7th Ave</div><div>Fort Lauderdale, FL 33304</div></div>	ARCHITECT OF RECORD: DESIGN ARCHITECT: JH DRAWN BY: JP CHECKER: JH SCALE: 1"=20'	ARCHITECT OF RECORD: _____ DESIGN ARCHITECT: JH DRAWN BY: JP CHECKER: JH SCALE: 1"=20'	NEIGHBORHOOD: 41ST ST CORRIDOR REVITALIZATION	File Name: 41STCORR - L1-3 - HARDSCAPE PLANS.dwg	Drawing: L1-32							
		4																
		3																
		2	2023-11-15	60% DESIGN MILESTONE														
		1	2023-04-17	30% DESIGN MILESTONE														
				NO	DATE							REVISION	APP'D. BY					

CURRENT DESIGN - BRIDGE OVER BISCAIYNE WATERWAY



CURRENT DESIGN - PRAIRIE AVE.

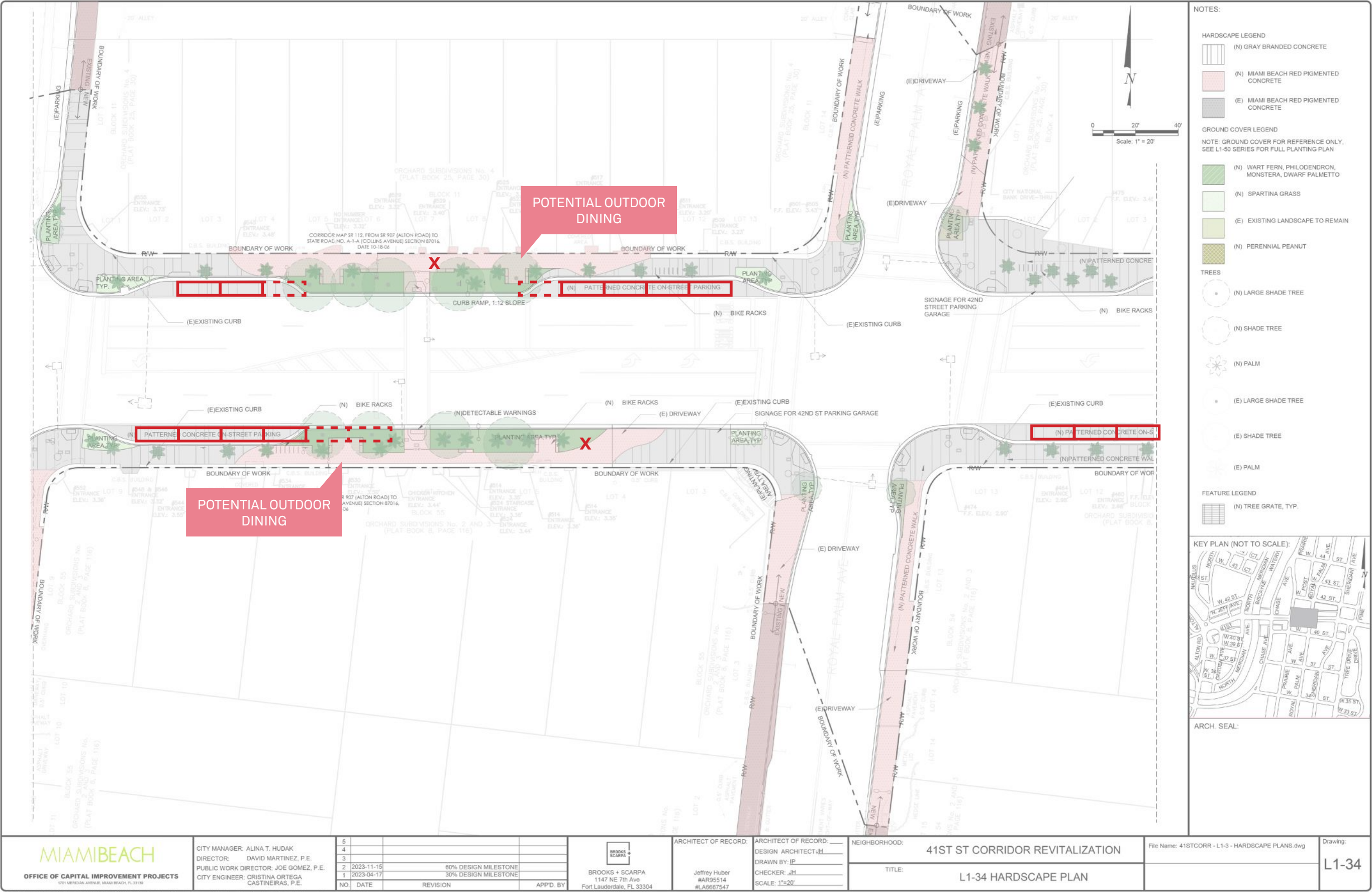


CURRENT DESIGN - MID BLOCK CROSSING BEFORE ROYAL PALM AVE.



THIS SPACE RESERVED FOR PROJECT MILESTONE

CURRENT DESIGN - MID BLOCK CROSSING BEFORE ROYAL PALM AVE.



CURRENT DESIGN - MID BLOCK CROSSING BEFORE SHERIDAN AVE.



THIS SPACE RESERVED FOR PROJECT MILESTONE

CURRENT DESIGN - MID BLOCK CROSSING BEFORE SHERIDAN AVE.



EXISTING



Existing Mid-Block Crossing



PROPOSED
AECOM



Mid-Block Crossing





CURRENT DESIGN - PINE TREE DRIVE AND HENRY LEIBMAN SQUARE



CURRENT DESIGN - PINE TREE DRIVE AND HENRY LEIBMAN SQUARE







