

ALL PROPOSED AND EXISTING
ELEVATIONS ARE SHOWN IN
N.A.V.D. 1988 DATUM.

LAKE PANCOAST

INDIAN CREEK DR.

4-5 STORY CONDOS

PARKING

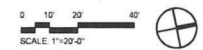
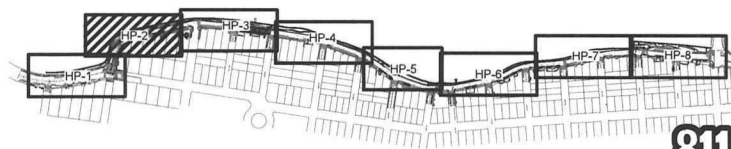
MATCH LINE, SEE SHEET HP-1

MATCH LINE, SEE SHEET HP-3

REFERENCE NOTES SCHEDULE			
Site Furnishings			
SYMBOL	DESCRIPTION	QTY	Detail
F-101	Recycling Receptacle	1	1H-D-2
F-102	Trash Receptacle	2	1H-D-2
F-103	Round Concrete Bench	10	3H-D-1
F-104	Bollard Light	128	3H-D-2
Hardscape			
SYMBOL	DESCRIPTION	QTY	Detail
H-100	Concrete Path	11,919 sf	1H-D-1
H-101	Concrete Sidewalk	N/A	Existing
H-102	Barrier Wall	N/A	Existing
H-103	Sea Wall	N/A	See Engineer Plans
H-104	Concrete Pad for Bench & Receptacle	13	4H-D-1
Planter Area			
SYMBOL	DESCRIPTION	QTY	Detail
P-100	Planter Area	N/A	See Landscape Plan

- NOTES:
- PATH MUST BE IN CONFORMANCE WITH MOST CURRENT AMERICAN WITH DISABILITIES ACT STANDARDS AND REGULATIONS FOR ACCESSIBLE DESIGN. PATH SHALL NOT EXCEED 5% RUNNING SLOPE OR 7% CROSS-SLOPE AT ANY TIME.
 - CONTRACTOR MUST FIELD VERIFY EXISTING AND PROPOSED CONDITIONS AND SUBMIT GRADING PLAN/LAYOUT FOR REVIEW AND APPROVAL PRIOR TO ANY MODIFICATIONS OF ANY EXISTING SITE FEATURES, INCLUDING, BUT NOT LIMITED TO, BARRIER WALLS, CONCRETES, LANDSCAPE, RM ELEVATIONS, CURBING, ETC.
 - REFER TO SURVEY PLANS FOR SEAWALL PROJECT FOR TOP OF WALL CAP ELEVATIONS.

KEY MAP:



DATE	SCALE	DESIGN BY	DRAWN BY	CHECKED BY	APPROVED BY

CRAVEN • THOMPSON AND ASSOCIATES, INC.
ENGINEERS • PLANNERS • SURVEYORS
2805 N.W. 28th Street, Fort Lauderdale, FL 33309
(954) 561-1100
FLORIDA LICENSED ENGINEERING, PLANNING & SURVEYING No. 271
FLORIDA LICENSED LANDSCAPE ARCHITECTURE No. 100074

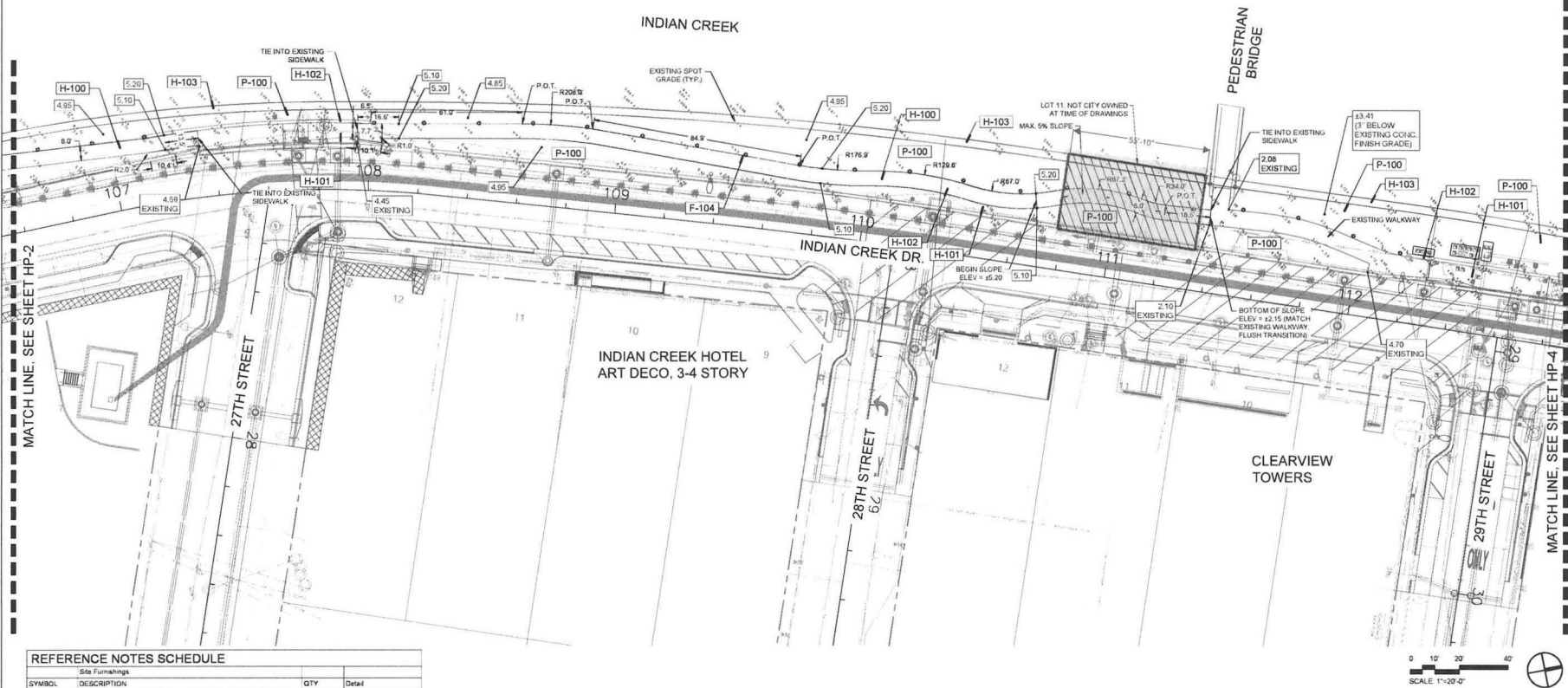
INDIAN CREEK GREENWAY
PREPARED FOR
CITY OF MIAMI BEACH
HARDSCAPE PLAN

Scott Wade Peavler
Florida R.L.A. No. 6566676
September 1, 2023
PROJECT NO.
18-0043-001-01

HP-2
SHEET 2 OF 8

Required Length of Floating dock = Approximately 1400 Linear feet \$4000/ft = 5.6 million

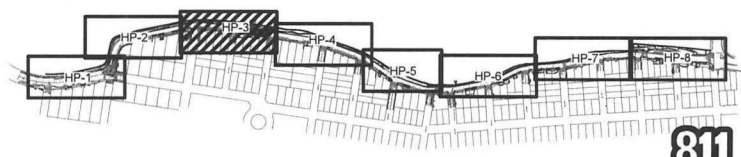
ALL PROPOSED AND EXISTING ELEVATIONS ARE SHOWN IN N.A.V.D. 1988 DATUM.



REFERENCE NOTES SCHEDULE			
Site Furnishings			
SYMBOL	DESCRIPTION	QTY	Detail
F-101	Recycling Receptacle	1	1HD-2
F-102	Trash Receptacle	2	1HD-2
F-103	Round Concrete Bench	10	3HD-1
F-104	Ballard Light	126	3HD-2
Hardscape			
SYMBOL	DESCRIPTION	QTY	Detail
H-100	Concrete Path	11,918 sf	1HD-1
H-101	Concrete Sidewalk	N/A	Existing
H-102	Barrier Wall	N/A	Existing
H-103	Sea Wall	N/A	See Engineer Plans
H-104	Concrete Pad for Bench & Receptacle	13	4HD-1
Planter Area			
SYMBOL	DESCRIPTION	QTY	Detail
P-100	Planter Area	N/A	See Landscape Plan

NOTES:
• PATH MUST BE IN CONFORMANCE WITH MOST CURRENT AMERICAN WITH DISABILITIES ACT STANDARDS AND REGULATIONS FOR ACCESSIBLE DESIGN. PATH SHALL NOT EXCEED 5% RUNNING SLOPE OR 2% CROSS-SLOPE AT ANY TIME.
• CONTRACTOR MUST FIELD VERIFY EXISTING AND PROPOSED CONDITIONS AND SUBMIT GRADING PLAN/LAYOUT FOR REVIEW AND APPROVAL PRIOR TO ANY MODIFICATIONS OF ANY EXISTING SITE FEATURES, INCLUDING, BUT NOT LIMITED TO, BARRIER WALLS, CONCRETES, LANDINGS, RIM ELEVATIONS, CURBING, ETC.
• REFER TO SURVEY PLANS FOR SEAWALL PROJECT FOR TOP OF WALL CAP ELEVATIONS.

KEY MAP:



12/09/18	DATE	SCALE	1"=20'-0"	DESIGNED BY	SCOTT W. PEAVLER	CHECKED BY	SCOTT W. PEAVLER	APPROVED BY	SCOTT W. PEAVLER
12/09/18	DATE	SCALE	1"=20'-0"	DESIGNED BY	SCOTT W. PEAVLER	CHECKED BY	SCOTT W. PEAVLER	APPROVED BY	SCOTT W. PEAVLER
INDIAN CREEK GREENWAY CITY OF MIAMI BEACH HARDSCAPE PLAN PROJECT NO. 18-0043-001-01 HP-3 SHEET 3 OF 8									

CRIVEN • THOMPSON AND ASSOCIATES, INC.
ENGINEERS • PLANNERS • SURVEYORS
3855 N.W. 32ND STREET, FORT LAUDERDALE, FL 33309
TEL: 954.575.1234 FAX: 954.575.1235
WWW.CRIVEN-THOMPSON.COM
FLORIDA LICENSED ENGINEERING, SURVEYING & LANDSCAPE ARCHITECTURE NO. 2711
FLORIDA LICENSED LANDSCAPE ARCHITECTURE NO. 12007-N

ALL PROPOSED AND EXISTING
ELEVATIONS ARE SHOWN IN
N.A.V.D. 1988 DATUM.

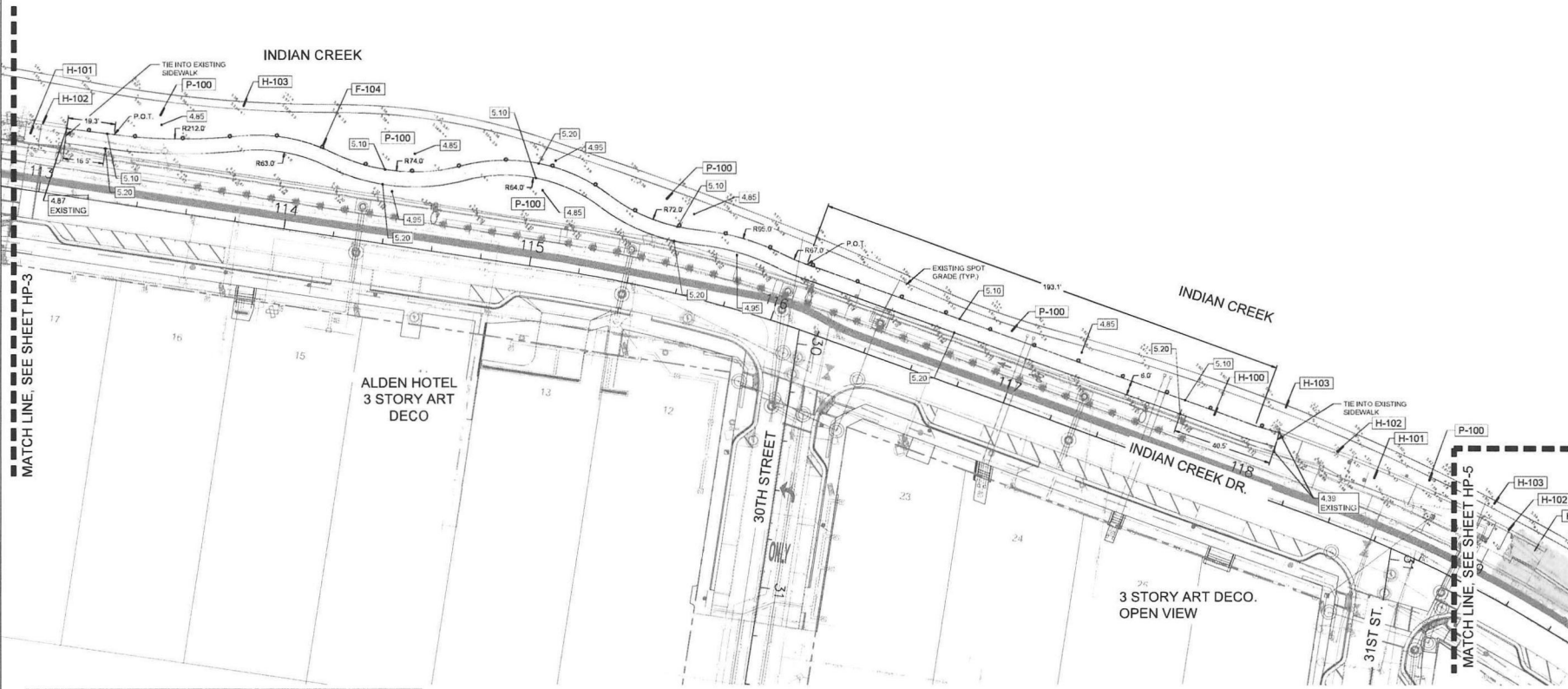
DATE	10/20/21
DESIGNED BY	
DRAWN BY	
CHECKED BY	
APPROVED BY	

GRAVEN - THOMPSON AND ASSOCIATES, INC.
ENGINEERS • PLANNERS • SURVEYORS
3865 N.W. 10TH STREET, SUITE 200
FORT LAUDERDALE, FL 33309
TEL: 954.333.3309
FAX: 954.333.3309
FLORIDA LICENSED ENGINEER, SURVEYOR & LANDSCAPE ARCHITECT NO. 271
FLORIDA LICENSED LANDSCAPE ARCHITECT NO. 271
FLORIDA LICENSED LANDSCAPE ARCHITECT NO. 271

INDIAN CREEK GREENWAY
PREPARED FOR
CITY OF MIAMI BEACH
HARDSCAPE PLAN

Scott Wade Peavler
Digitally signed by Scott Wade Peavler
Date: 2023.12.01
15:20:13 -0500
Scott W. Peavler
Florida P.E. No. 6558576
September 1, 2023
PROJECT NO.
18-0043-001-01

HP-4
SHEET 4 OF 8



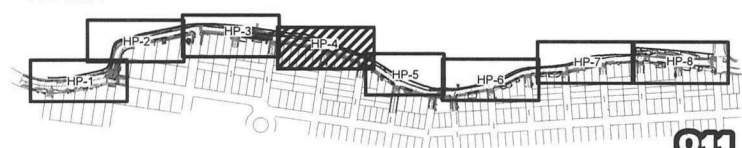
REFERENCE NOTES SCHEDULE			
Site Furnishings			
SYMBOL	DESCRIPTION	QTY	Detail
[F-101]	Recycling Receptacle	1	18HD-2
[F-102]	Trash Receptacle	2	18HD-2
[F-103]	Round Concrete Bench	10	3HD-1
[F-104]	Bollard Light	126	3HD-2

Hardscape			
SYMBOL	DESCRIPTION	QTY	Detail
[H-100]	Concrete Path	11,916 sf	18HD-1
[H-101]	Concrete Sidewalk	N/A	Existing
[H-102]	Barrier Wall	N/A	Existing
[H-103]	Sea Wall	N/A	See Engineer Plans
[H-104]	Concrete Pad for Bench & Receptacle	13	4HD-1

Planter Area			
SYMBOL	DESCRIPTION	QTY	Detail
[P-100]	Planter Area	N/A	See Landscape Plan

NOTES:
• PATH MUST BE IN CONFORMANCE WITH MOST CURRENT AMERICAN WITH DISABILITIES ACT STANDARDS AND REGULATIONS FOR ACCESSIBLE DESIGN. PATH SHALL NOT EXCEED 5% RUNNING SLOPE OR 2% CROSS-SLOPE AT ANY TIME.
• CONTRACTOR MUST FIELD VERIFY EXISTING AND PROPOSED CONDITIONS AND SUBMIT GRADING PLAN LAYOUT FOR REVIEW AND APPROVAL PRIOR TO ANY MODIFICATIONS OF ANY EXISTING SITE FEATURES, INCLUDING, BUT NOT LIMITED TO BARRIER WALLS, CONCRETE LANDINGS, RM ELEVATIONS, CURBING, ETC.
• REFER TO SURVEY PLANS FOR SEAWALL PROJECT FOR TOP OF WALL CAP ELEVATIONS.

KEY MAP:



DATE	12/06/18
SCALE	SEE SHEET
DESIGN BY	NOP
DRAWN BY	NOP
CHECKED BY	SWP
APPROVED BY	SWP



INDIAN CREEK GREENWAY
PREPARED FOR CITY OF MIAMI BEACH
HARDSCAPE PLAN

NOTES

- PATH MUST BE IN CONFORMANCE WITH MOST CURRENT AMERICAN WITH DISABILITIES ACT STANDARDS AND REGULATION FOR ACCESSIBLE DESIGN. PATH SHALL NOT EXCEED 5% RUNNING SLOPE OR 2% CROSS-SLOPE AT ANY TIME.
- CONTRACTOR MUST FIELD VERIFY EXISTING AND PROPOSED CONDITIONS AND SUBMIT GRADING PLAN/LAYOUT FOR REVIEW AND APPROVAL PRIOR TO ANY MODIFICATIONS OF ANY EXISTING SITE FEATURES, INCLUDING, BUT NOT LIMITED TO BARRIER WALLS, CONCRETE LANDINGS, RIM ELEVATIONS, CURBING, ETC.
- REFER TO SURVEY PLANS FOR SEAWALL PROJECTIONS FOR TOP OF WALL CAP ELEVATIONS.



Scott Wade Pawler	Digitally signed by Scott Wade Pawler Date: 2023.12.01 15:20:34 -05'00'
Scott W. Pawler Florida R.L.A. No. 6665676 September 1, 2023	
PROJECT NO. 18-0043-001-01	
HP-5	
SHEET 5 OF 9	

ALL PROPOSED AND EXISTING
ELEVATIONS ARE SHOWN IN
N.A.V.D. 1988 DATUM.

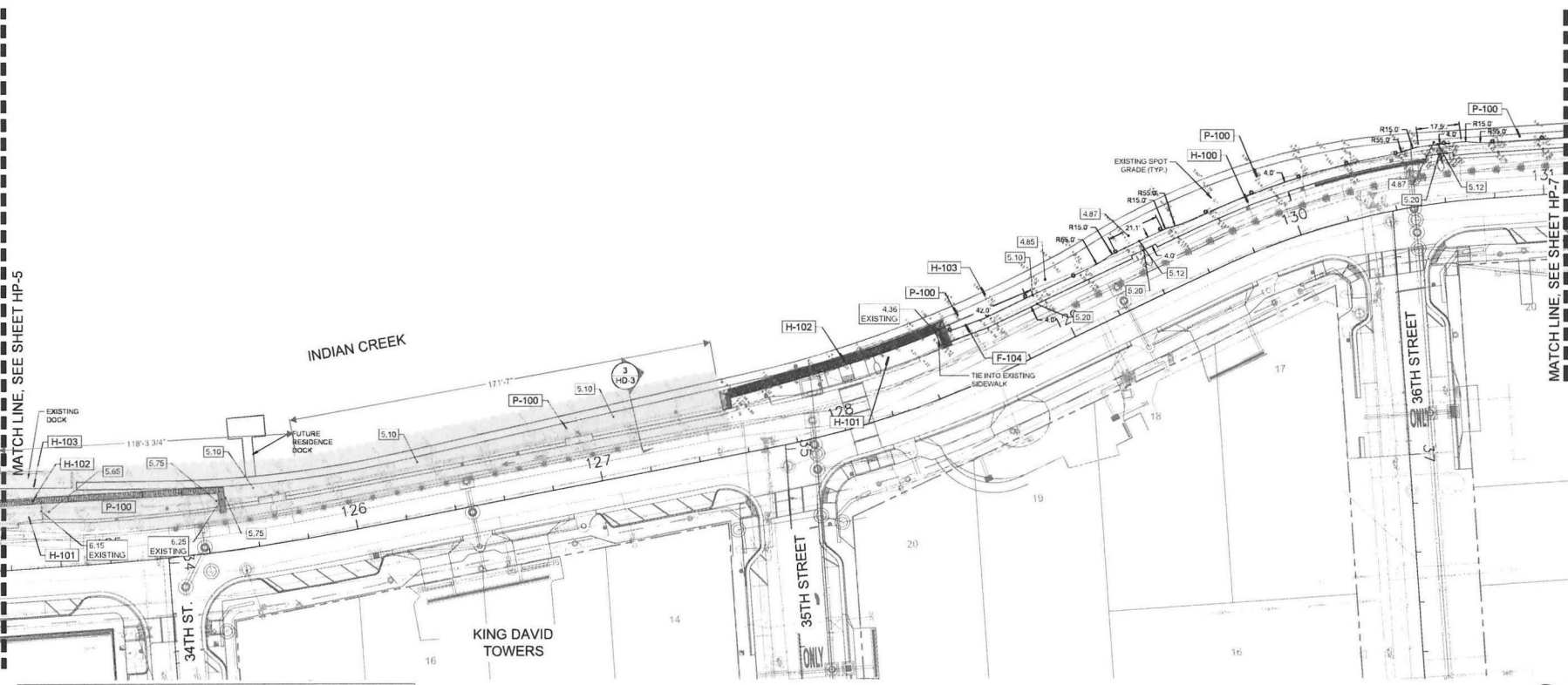
DATE	1/20/24
SCALE	
DESIGN BY	
DRAWN BY	
CHECKED BY	
APPROVED BY	

CRAVEN • THOMPSON AND ASSOCIATES, INC.
ENGINEERS • PLANNERS • SURVEYORS
3500 N.W. 10th Avenue, Suite 200
Fort Lauderdale, FL 33309
P.O. Box 10000
Fort Lauderdale, FL 33308
TELEPHONE: (954) 738-8400
FAX: (954) 738-8400
FLORIDA LICENSED ENGINEERING, PLANNING & SURVEYING IN 271
FLORIDA LICENSED LANDSCAPE ARCHITECTURE BUSINESS NO. 100074

INDIAN CREEK GREENWAY
CITY OF MIAMI BEACH
HARDSCAPE PLAN

Scott Wade Peavler
Original
Signed by Scott Wade Peavler
Date
2023.12.01
15:20:54-0500
PROJECT NO.
18-0043-001-01

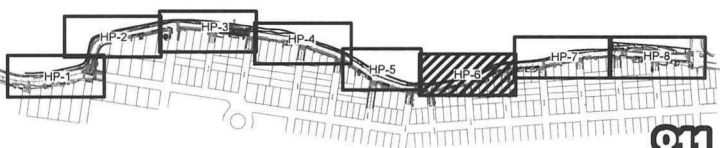
HP-6
SHEET 6 OF 9



REFERENCE NOTES SCHEDULE			
Site Furnishings			
SYMBOL	DESCRIPTION	QTY	Detail
[F-101]	Recycling Receptacle	1	1H-D-2
[F-102]	Trash Receptacle	2	1H-D-2
[F-103]	Round Concrete Bench	10	3H-D-1
[F-104]	Ballast Light	126	3H-D-2
Hardscape			
SYMBOL	DESCRIPTION	QTY	Detail
[H-100]	Concrete Path	11,918 sf	1H-D-1
[H-101]	Concrete Sidewalk	N/A	Existing
[H-102]	Barrier Wall	N/A	Existing
[H-103]	Sea Wall	N/A	See Engineer Plans
[H-104]	Concrete Pad for Bench & Receptacle	13	4H-D-1
Planter Area			
SYMBOL	DESCRIPTION	QTY	Detail
[H-100]	Planter Area	N/A	See Landscape Plan

NOTES:
• PATH MUST BE IN CONFORMANCE WITH MOST CURRENT AMERICAN WITH DISABILITIES ACT STANDARDS AND REGULATIONS FOR ACCESSIBLE DESIGN. PATH SHALL NOT EXCEED 5% RUNNING SLOPE OR 2% CROSS-SLOPE AT ANY TIME.
• CONTRACTOR MUST FIELD VERIFY EXISTING AND PROPOSED CONDITIONS AND SUBMIT GRADING PLAN/AYOUT FOR REVIEW AND APPROVAL PRIOR TO ANY MODIFICATIONS OF ANY EXISTING SITE FEATURES, INCLUDING, BUT NOT LIMITED TO: BARRIER WALLS, CONCRETE LANDINGS, RM ELEVATIONS, CURBING, ETC.
• REFER TO SURVEY PLANS FOR SEAWALL PROJECT FOR TOP OF WALL CAP ELEVATIONS.

KEY MAP:



ALL PROPOSED AND EXISTING
ELEVATIONS ARE SHOWN IN
N.A.V.D. 1985 DATUM.

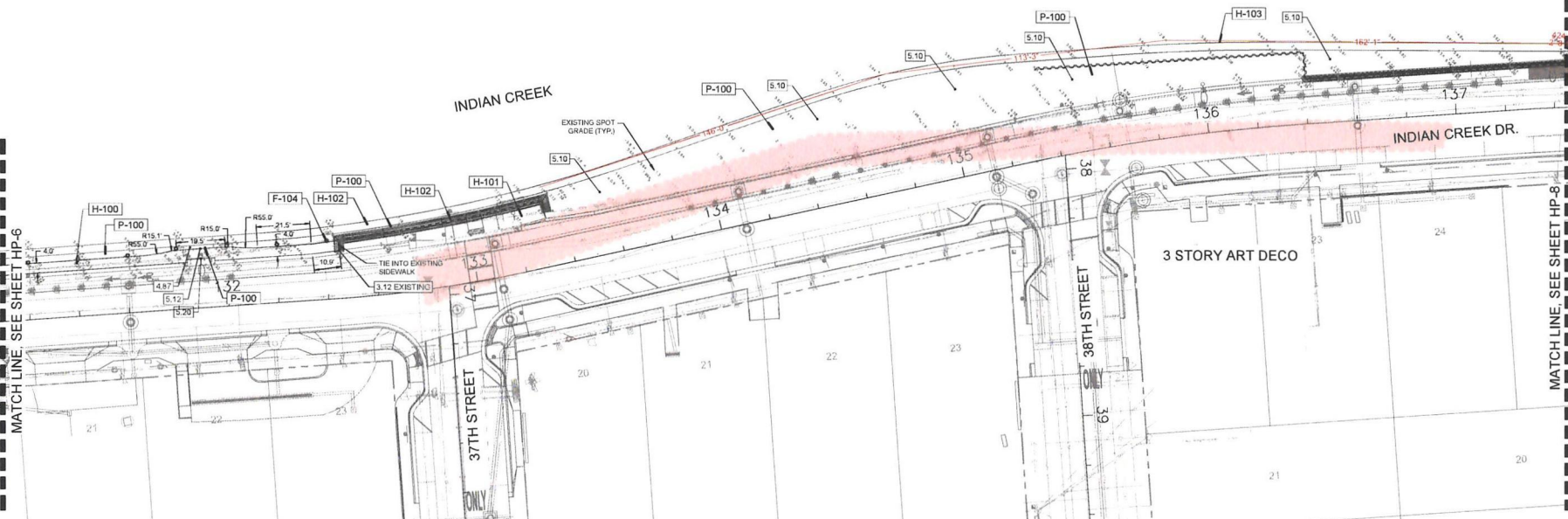
DATE	SCALE	DESIGN BY	CHECKED BY	APPROVED BY
12/06/18				
12/06/18				
12/06/18				
12/06/18				
12/06/18				

CRAVEN • THOMPSON AND ASSOCIATES, INC.
ENGINEERS • PLANNERS • SURVEYORS
2550 N.W. 107th Avenue, Suite 200, Fort Lauderdale, FL 33309
P.O. Box 10700, Fort Lauderdale, FL 33309
FLORIDA LICENSED ENGINEERING, PLANNING & SURVEYING LICENSE NO. 271
FLORIDA LICENSED LANDSCAPE ARCHITECTURE LICENSE NO. 100014
SCOTT W. PEAVLER, P.E., P.L.A., F.P.S., F.A.S.T., F.A.S.T. MEMBER
SCOTT W. PEAVLER, P.E., P.L.A., F.P.S., F.A.S.T., F.A.S.T. MEMBER

INDIAN CREEK GREENWAY
REDESIGNED FOR
CITY OF MIAMI BEACH
HARDSCAPE PLAN

Scott W. Peavler
Florida P.E., P.L.A., No. 6565876
September 1, 2023
PROJECT NO.
18-0043-001-01

HP-7
SHEET 7 OF 9

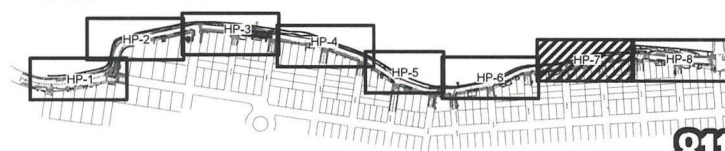


REFERENCE NOTES SCHEDULE			
Site Furnishings			
SYMBOL	DESCRIPTION	QTY	Detail
[F-101]	Recycling Receptacle	1	1H-D-2
[F-102]	Trash Receptacle	2	1H-D-2
[F-103]	Round Concrete Bench	10	3H-D-1
[F-104]	Bollard Light	126	3H-D-2
Hardscape			
SYMBOL	DESCRIPTION	QTY	Detail
[H-100]	Concrete Path	11,918 sf	1H-D-1
[H-101]	Concrete Sidewalk	N/A	Existing
[H-102]	Barrier Wall	N/A	Existing
[H-103]	Sea Wall	N/A	See Engineer Plans
[H-104]	Concrete Pad for Bench & Receptacle	13	4H-D-1
Planter Area			
SYMBOL	DESCRIPTION	QTY	Detail
[P-100]	Planter Area	N/A	See Landscape Plan

NOTES

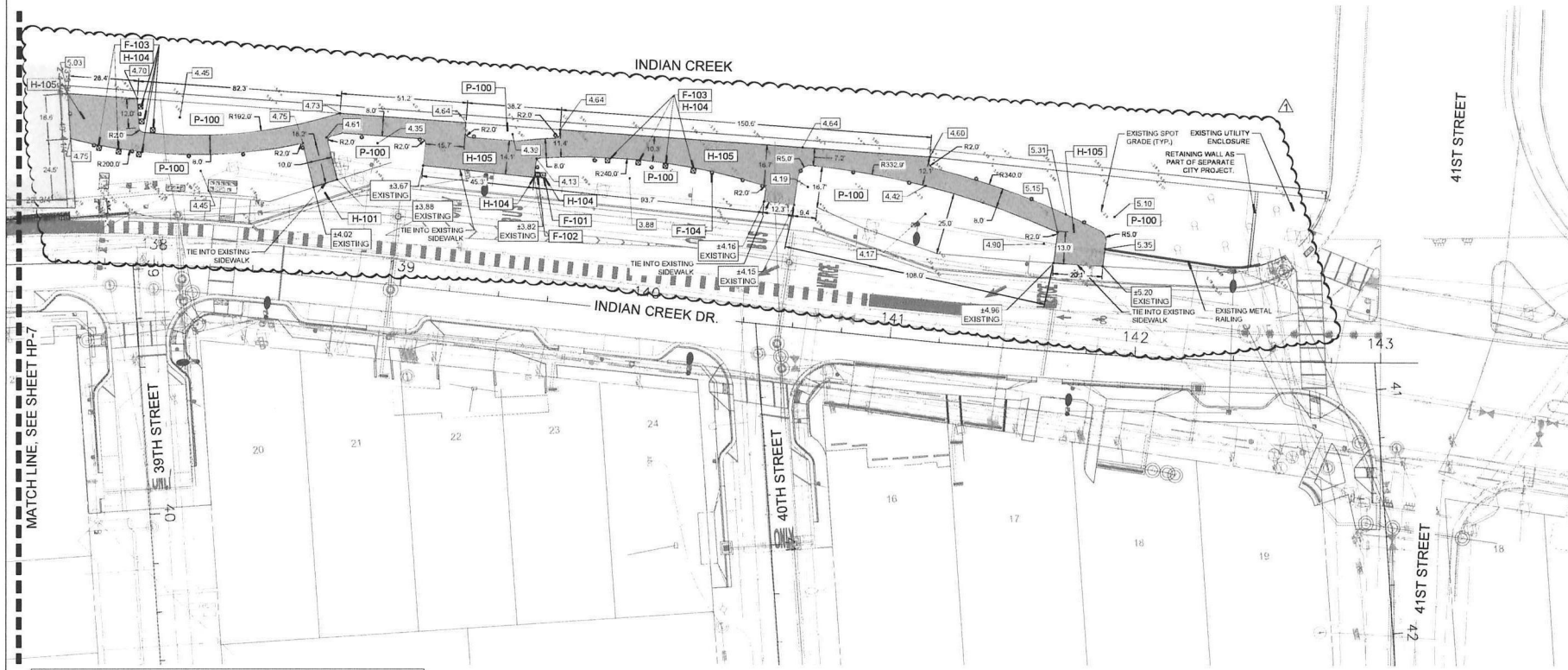
- PATH MUST BE IN CONFORMANCE WITH MOST CURRENT AMERICAN WITH DISABILITIES ACT STANDARDS AND REGULATIONS FOR ACCESSIBLE DESIGN. PATH SHALL NOT EXCEED 5% RUNNING SLOPE OR 2% CROSS-SLOPE AT ANY TIME.
- CONTRACTOR MUST FIELD VERIFY EXISTING AND PROPOSED CONDITIONS AND SUBMIT GRADING PLAN LAYOUT FOR REVIEW AND APPROVAL PRIOR TO ANY MODIFICATIONS OF ANY EXISTING SITE FEATURES, INCLUDING, BUT NOT LIMITED TO, BARRIER WALLS, CONCRETE LANDINGS, RIM ELEVATIONS, CURBING, ETC.
- REFER TO SURVEY PLANS FOR SEAWALL PROJECT FOR TOP OF WALL CAP ELEVATIONS.

KEY MAP:



811
Know what's below.
Call before you dig.

ALL PROPOSED AND EXISTING
ELEVATIONS ARE SHOWN IN
N.A.V.D. 1988 DATUM.

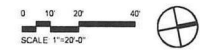
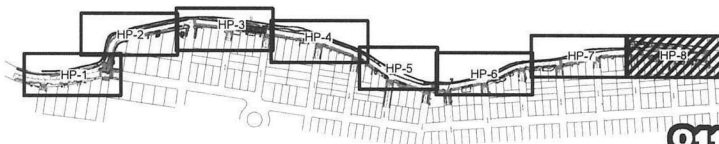


REFERENCE NOTES SCHEDULE

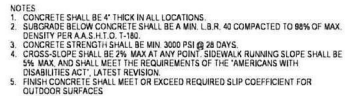
SYMBOL	DESCRIPTION	QTY	Detail
[F-101]	Recycling Receptacle	1	1H-D-2
[F-102]	Trash Receptacle	2	1H-D-2
[F-103]	Round Concrete Bench	10	3H-D-1
[F-104]	Bollard Light	126	3H-D-2
[H-100]	Concrete Path	11,919 sf	1H-D-1
[H-101]	Concrete Sidewalk	N/A	Existing
[H-102]	Barrier Wall	N/A	Existing
[H-103]	Sea Wall	N/A	See Engineer Plans
[H-104]	Concrete Pathway, Bench & Receptacle	1	3H-D-1
[H-105]	Mural Bench, Red Concrete	1,087 sf	3H-D-1
[P-100]	Planter Area	N/A	See Landscape Plan

NOTES:
 • PATH MUST BE IN CONFORMANCE WITH MOST CURRENT AMERICAN WITH DISABILITIES ACT STANDARDS AND REGULATIONS FOR ACCESSIBLE DESIGN. PATH SHALL NOT EXCEED 3% RUNNING SLOPE OR 2% CROSS-SLOPE AT ANY TIME.
 • CONTRACTOR MUST FIELD VERIFY EXISTING AND PROPOSED CONDITIONS AND SUBMIT GRADING PLAN/PAVEMENT FOR REVIEW AND APPROVAL PRIOR TO ANY MODIFICATIONS OF ANY EXISTING SITE FEATURES, INCLUDING, BUT NOT LIMITED TO BARRIER WALLS, CONCRETE LANDINGS, RIM ELEVATIONS, CURBING, ETC.
 • REFER TO SURVEY PLANS FOR SEAWALL PROJECT FOR TOP OF WALL CAP ELEVATIONS.

KEY MAP:



DATE	1/20/23	DESIGNED BY	NDP	CHECKED BY	NDP	APPROVED BY	NDP
SCALE		DRAWN BY	NDP				
GRAVEN - THOMPSON AND ASSOCIATES, INC. ENGINEERS • PLANNERS • SURVEYORS 3801 N.W. 12TH AVENUE, SUITE 200 MIAMI, FL 33142 (305) 581-1400 FLORIDA LICENSED ENGINEERING, PLANNING & SURVEYING NO. 271 FLORIDA LICENSED LANDSCAPE ARCHITECTURE NO. 12001A 12001A, 12001B, 12001C, 12001D, 12001E, 12001F, 12001G, 12001H, 12001I, 12001J, 12001K, 12001L, 12001M, 12001N, 12001O, 12001P, 12001Q, 12001R, 12001S, 12001T, 12001U, 12001V, 12001W, 12001X, 12001Y, 12001Z, 12002A, 12002B, 12002C, 12002D, 12002E, 12002F, 12002G, 12002H, 12002I, 12002J, 12002K, 12002L, 12002M, 12002N, 12002O, 12002P, 12002Q, 12002R, 12002S, 12002T, 12002U, 12002V, 12002W, 12002X, 12002Y, 12002Z, 12003A, 12003B, 12003C, 12003D, 12003E, 12003F, 12003G, 12003H, 12003I, 12003J, 12003K, 12003L, 12003M, 12003N, 12003O, 12003P, 12003Q, 12003R, 12003S, 12003T, 12003U, 12003V, 12003W, 12003X, 12003Y, 12003Z, 12004A, 12004B, 12004C, 12004D, 12004E, 12004F, 12004G, 12004H, 12004I, 12004J, 12004K, 12004L, 12004M, 12004N, 12004O, 12004P, 12004Q, 12004R, 12004S, 12004T, 12004U, 12004V, 12004W, 12004X, 12004Y, 12004Z, 12005A, 12005B, 12005C, 12005D, 12005E, 12005F, 12005G, 12005H, 12005I, 12005J, 12005K, 12005L, 12005M, 12005N, 12005O, 12005P, 12005Q, 12005R, 12005S, 12005T, 12005U, 12005V, 12005W, 12005X, 12005Y, 12005Z, 12006A, 12006B, 12006C, 12006D, 12006E, 12006F, 12006G, 12006H, 12006I, 12006J, 12006K, 12006L, 12006M, 12006N, 12006O, 12006P, 12006Q, 12006R, 12006S, 12006T, 12006U, 12006V, 12006W, 12006X, 12006Y, 12006Z, 12007A, 12007B, 12007C, 12007D, 12007E, 12007F, 12007G, 12007H, 12007I, 12007J, 12007K, 12007L, 12007M, 12007N, 12007O, 12007P, 12007Q, 12007R, 12007S, 12007T, 12007U, 12007V, 12007W, 12007X, 12007Y, 12007Z, 12008A, 12008B, 12008C, 12008D, 12008E, 12008F, 12008G, 12008H, 12008I, 12008J, 12008K, 12008L, 12008M, 12008N, 12008O, 12008P, 12008Q, 12008R, 12008S, 12008T, 12008U, 12008V, 12008W, 12008X, 12008Y, 12008Z, 12009A, 12009B, 12009C, 12009D, 12009E, 12009F, 12009G, 12009H, 12009I, 12009J, 12009K, 12009L, 12009M, 12009N, 12009O, 12009P, 12009Q, 12009R, 12009S, 12009T, 12009U, 12009V, 12009W, 12009X, 12009Y, 12009Z, 12010A, 12010B, 12010C, 12010D, 12010E, 12010F, 12010G, 12010H, 12010I, 12010J, 12010K, 12010L, 12010M, 12010N, 12010O, 12010P, 12010Q, 12010R, 12010S, 12010T, 12010U, 12010V, 12010W, 12010X, 12010Y, 12010Z, 12011A, 12011B, 12011C, 12011D, 12011E, 12011F, 12011G, 12011H, 12011I, 12011J, 12011K, 12011L, 12011M, 12011N, 12011O, 12011P, 12011Q, 12011R, 12011S, 12011T, 12011U, 12011V, 12011W, 12011X, 12011Y, 12011Z, 12012A, 12012B, 12012C, 12012D, 12012E, 12012F, 12012G, 12012H, 12012I, 12012J, 12012K, 12012L, 12012M, 12012N, 12012O, 12012P, 12012Q, 12012R, 12012S, 12012T, 12012U, 12012V, 12012W, 12012X, 12012Y, 12012Z, 12013A, 12013B, 12013C, 12013D, 12013E, 12013F, 12013G, 12013H, 12013I, 12013J, 12013K, 12013L, 12013M, 12013N, 12013O, 12013P, 12013Q, 12013R, 12013S, 12013T, 12013U, 12013V, 12013W, 12013X, 12013Y, 12013Z, 12014A, 12014B, 12014C, 12014D, 12014E, 12014F, 12014G, 12014H, 12014I, 12014J, 12014K, 12014L, 12014M, 12014N, 12014O, 12014P, 12014Q, 12014R, 12014S, 12014T, 12014U, 12014V, 12014W, 12014X, 12014Y, 12014Z, 12015A, 12015B, 12015C, 12015D, 12015E, 12015F, 12015G, 12015H, 12015I, 12015J, 12015K, 12015L, 12015M, 12015N, 12015O, 12015P, 12015Q, 12015R, 12015S, 12015T, 12015U, 12015V, 12015W, 12015X, 12015Y, 12015Z, 12016A, 12016B, 12016C, 12016D, 12016E, 12016F, 12016G, 12016H, 12016I, 12016J, 12016K, 12016L, 12016M, 12016N, 12016O, 12016P, 12016Q, 12016R, 12016S, 12016T, 12016U, 12016V, 12016W, 12016X, 12016Y, 12016Z, 12017A, 12017B, 12017C, 12017D, 12017E, 12017F, 12017G, 12017H, 12017I, 12017J, 12017K, 12017L, 12017M, 12017N, 12017O, 12017P, 12017Q, 12017R, 12017S, 12017T, 12017U, 12017V, 12017W, 12017X, 12017Y, 12017Z, 12018A, 12018B, 12018C, 12018D, 12018E, 12018F, 12018G, 12018H, 12018I, 12018J, 12018K, 12018L, 12018M, 12018N, 12018O, 12018P, 12018Q, 12018R, 12018S, 12018T, 12018U, 12018V, 12018W, 12018X, 12018Y, 12018Z, 12019A, 12019B, 12019C, 12019D, 12019E, 12019F, 12019G, 12019H, 12019I, 12019J, 12019K, 12019L, 12019M, 12019N, 12019O, 12019P, 12019Q, 12019R, 12019S, 12019T, 12019U, 12019V, 12019W, 12019X, 12019Y, 12019Z, 12020A, 12020B, 12020C, 12020D, 12020E, 12020F, 12020G, 12020H, 12020I, 12020J, 12020K, 12020L, 12020M, 12020N, 12020O, 12020P, 12020Q, 12020R, 12020S, 12020T, 12020U, 12020V, 12020W, 12020X, 12020Y, 12020Z, 12021A, 12021B, 12021C, 12021D, 12021E, 12021F, 12021G, 12021H, 12021I, 12021J, 12021K, 12021L, 12021M, 12021N, 12021O, 12021P, 12021Q, 12021R, 12021S, 12021T, 12021U, 12021V, 12021W, 12021X, 12021Y, 12021Z, 12022A, 12022B, 12022C, 12022D, 12022E, 12022F, 12022G, 12022H, 12022I, 12022J, 12022K, 12022L, 12022M, 12022N, 12022O, 12022P, 12022Q, 12022R, 12022S, 12022T, 12022U, 12022V, 12022W, 12022X, 12022Y, 12022Z, 12023A, 12023B, 12023C, 12023D, 12023E, 12023F, 12023G, 12023H, 12023I, 12023J, 12023K, 12023L, 12023M, 12023N, 12023O, 12023P, 12023Q, 12023R, 12023S, 12023T, 12023U, 12023V, 12023W, 12023X, 12023Y, 12023Z, 12024A, 12024B, 12024C, 12024D, 12024E, 12024F, 12024G, 12024H, 12024I, 12024J, 12024K, 12024L, 12024M, 12024N, 12024O, 12024P, 12024Q, 12024R, 12024S, 12024T, 12024U, 12024V, 12024W, 12024X, 12024Y, 12024Z, 12025A, 12025B, 12025C, 12025D, 12025E, 12025F, 12025G, 12025H, 12025I, 12025J, 12025K, 12025L, 12025M, 12025N, 12025O, 12025P, 12025Q, 12025R, 12025S, 12025T, 12025U, 12025V, 12025W, 12025X, 12025Y, 12025Z, 12026A, 12026B, 12026C, 12026D, 12026E, 12026F, 12026G, 12026H, 12026I, 12026J, 12026K, 12026L, 12026M, 12026N, 12026O, 12026P, 12026Q, 12026R, 12026S, 12026T, 12026U, 12026V, 12026W, 12026X, 12026Y, 12026Z, 12027A, 12027B, 12027C, 12027D, 12027E, 12027F, 12027G, 12027H, 12027I, 12027J, 12027K, 12027L, 12027M, 12027N, 12027O, 12027P, 12027Q, 12027R, 12027S, 12027T, 12027U, 12027V, 12027W, 12027X, 12027Y, 12027Z, 12028A, 12028B, 12028C, 12028D, 12028E, 12028F, 12028G, 12028H, 12028I, 12028J, 12028K, 12028L, 12028M, 12028N, 12028O, 12028P, 12028Q, 12028R, 12028S, 12028T, 12028U, 12028V, 12028W, 12028X, 12028Y, 12028Z, 12029A, 12029B, 12029C, 12029D, 12029E, 12029F, 12029G, 12029H, 12029I, 12029J, 12029K, 12029L, 12029M, 12029N, 12029O, 12029P, 12029Q, 12029R, 12029S, 12029T, 12029U, 12029V, 12029W, 12029X, 12029Y, 12029Z, 12030A, 12030B, 12030C, 12030D, 12030E, 12030F, 12030G, 12030H, 12030I, 12030J, 12030K, 12030L, 12030M, 12030N, 12030O, 12030P, 12030Q, 12030R, 12030S, 12030T, 12030U, 12030V, 12030W, 12030X, 12030Y, 12030Z, 12031A, 12031B, 12031C, 12031D, 12031E, 12031F, 12031G, 12031H, 12031I, 12031J, 12031K, 12031L, 12031M, 12031N, 12031O, 12031P, 12031Q, 12031R, 12031S, 12031T, 12031U, 12031V, 12031W, 12031X, 12031Y, 12031Z, 12032A, 12032B, 12032C, 12032D, 12032E, 12032F, 12032G, 12032H, 12032I, 12032J, 12032K, 12032L, 12032M, 12032N, 12032O, 12032P, 12032Q, 12032R, 12032S, 12032T, 12032U, 12032V, 12032W, 12032X, 12032Y, 12032Z, 12033A, 12033B, 12033C, 12033D, 12033E, 12033F, 12033G, 12033H, 12033I, 12033J, 12033K, 12033L, 12033M, 12033N, 12033O, 12033P, 12033Q, 12033R, 12033S, 12033T, 12033U, 12033V, 12033W, 12033X, 12033Y, 12033Z, 12034A, 12034B, 12034C, 12034D, 12034E, 12034F, 12034G, 12034H, 12034I, 12034J, 12034K, 12034L, 12034M, 12034N, 12034O, 12034P, 12034Q, 12034R, 12034S, 12034T, 12034U, 12034V, 12034W, 12034X, 12034Y, 12034Z, 12035A, 12035B, 12035C, 12035D, 12035E, 12035F, 12035G, 12035H, 12035I, 12035J, 12035K, 12035L, 12035M, 12035N, 12035O, 12035P, 12035Q, 12035R, 12035S, 12035T, 12035U, 12035V, 12035W, 12035X, 12035Y, 12035Z, 12036A, 12036B, 12036C, 12036D, 12036E, 12036F, 12036G, 12036H, 12036I, 12036J, 12036K, 12036L, 12036M, 12036N, 12036O, 12036P, 12036Q, 12036R, 12036S, 12036T, 12036U, 12036V, 12036W, 12036X, 12036Y, 12036Z, 12037A, 12037B, 12037C, 12037D, 12037E, 12037F, 12037G, 12037H, 12037I, 12037J, 12037K, 12037L, 12037M, 12037N, 12037O, 12037P, 12037Q, 12037R, 12037S, 12037T, 12037U, 12037V, 12037W, 12037X, 12037Y, 12037Z, 12038A, 12038B, 12038C, 12038D, 12038E, 12038F, 12038G, 12038H, 12038I, 12038J, 12038K, 12038L, 12038M, 12038N, 12038O, 12038P, 12038Q, 12038R, 12038S, 12038T, 12038U, 12038V, 12038W, 12038X, 12038Y, 12038Z, 12039A, 12039B, 12039C, 12039D, 12039E, 12039F, 12039G, 12039H, 12039I, 12039J, 12039K, 12039L, 12039M, 12039N, 12039O, 12039P, 12039Q, 12039R, 12039S, 12039T, 12039U, 12039V, 12039W, 12039X, 12039Y, 12039Z, 12040A, 12040B, 12040C, 12040D, 12040E, 12040F, 12040G, 12040H, 12040I, 12040J, 12040K, 12040L, 12040M, 12040N, 12040O, 12040P, 12040Q, 12040R, 12040S, 12040T, 12040U, 12040V, 12040W, 12040X, 12040Y, 12040Z, 12041A, 12041B, 12041C, 12041D, 12041E, 12041F, 12041G, 12041H, 12041I, 12041J, 12041K, 12041L, 12041M, 12041N, 12041O, 12041P, 12041Q, 12041R, 12041S, 12041T, 12041U, 12041V, 12041W, 12041X, 12041Y, 12041Z, 12042A, 12042B, 12042C, 12042D, 12042E, 12042F, 12042G, 12042H, 12042I, 12042J, 12042K, 12042L, 12042M, 12042N, 12042O, 12042P, 12042Q, 12042R, 12042S, 12042T, 12042U, 12042V, 12042W, 12042X, 12042Y, 12042Z, 12043A, 12043B, 12043C, 12043D, 12043E, 12043F, 12043G, 12043H, 12043I, 12043J, 12043K, 12043L, 12043M, 12043N, 12043O, 12043P, 12043Q, 12043R, 12043S, 12043T, 12043U, 12043V, 12043W, 12043X, 12043Y, 12043Z, 12044A, 12044B, 12044C, 12044D, 12044E, 12044F, 12044G, 12044H, 12044I, 12044J, 12044K, 12044L, 12044M, 12044N, 12044O, 12044P, 12044Q, 12044R, 12044S, 12044T, 12044U, 12044V, 12044W, 12044X, 12044Y, 12044Z, 12045A, 12045B, 12045C, 12045D, 12045E, 12045F, 12045G, 12045H, 12045I, 12045J, 12045K, 12045L, 12045M, 12045N, 12045O, 12045P, 12045Q, 12045R, 12045S, 12045T, 12045U, 12045V, 12045W, 12045X, 12045Y, 12045Z, 12046A, 12046B, 12046C, 12046D, 12046E, 12046F, 12046G, 12046H, 12046I, 12046J, 12046K, 12046L, 12046M, 12046N, 12046O, 12046P, 12046Q, 12046R, 12046S, 12046T, 12046U, 12046V, 12046W, 12046X, 12046Y, 12046Z, 12047A, 12047B, 12047C, 12047D, 12047E, 12047F, 12047G, 12047H, 12047I, 12047J, 12047K, 12047L, 12047M, 12047N, 12047O, 12047P, 12047Q, 12047R, 12047S, 12047T, 12047U, 12047V, 12047W, 12047X, 12047Y, 12047Z, 12048A, 12048B, 12048C, 12048D, 12048E, 12048F, 12048G, 12048H, 12048I, 12048J, 12048K, 12048L, 12048M, 12048N, 12048O, 12048P, 12048Q, 12048R, 12048S, 12048T, 12048U, 12048V, 12048W, 12048X, 12048Y, 12048Z, 12049A, 12049B, 12049C, 12049D, 12049E, 12049F, 12049G, 12049H, 12049I, 12049J, 12049K, 12049L, 12049M, 12049N, 12049O, 12049P, 12049Q, 12049R, 12049S, 12049T, 12049U, 12049V, 12049W, 12049X, 12049Y, 12049Z, 12050A, 12050B, 12050C, 12050D, 12050E, 12050F, 12050G, 12050H, 12050I, 12050J, 12050K, 12050L, 12050M, 12050N, 12050O, 12050P, 12050Q, 12050R, 12050S, 12050T, 12050U, 12050V, 12050W, 12050X, 12050Y, 12050Z, 12051A, 12051B, 12051C, 12051D, 12051E, 12051F, 12051G, 12051H, 12051I, 12051J, 12051K, 12051L, 12051M, 12051N, 12051O, 12051P, 12051Q, 12051R, 12051S, 12051T, 12051U, 12051V, 12051W, 12051X, 12051Y, 12051Z, 12052A, 12052B, 12052C, 12052D, 12052E, 12052F, 12052G, 12052H, 12052I, 12052J, 12052K, 12052L, 12052M, 12052N, 12052O, 12052P, 12052Q, 12052R, 12052S, 12052T, 12052U, 12052V, 12052W, 12052X, 12052Y, 12052Z, 12053A, 12053B, 12053C, 12053D, 12053E, 12053F, 12053G, 12053H, 12053I, 1205							



DETAIL

Diagram illustrating the construction of a concrete expansion joint (EXP. JOINT) between two concrete slabs, showing the joint details and dimensions.

TYPE A JOINT: 1/4" EXPANSION JOINT (TYP.)

TYPE B JOINT: 1 1/2" DEEP X 3/4" WIDE NOTCH WITH 1/2" RADIUS AS REQUIRED

NOTE 3: 5'-0" (TYP.)

MASTIC JOINT SEALER, 1" DEEP (TYP.)

1/4" EXP. JOINT

5'-0"

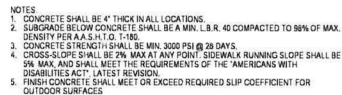
25'-0" BETWEEN EXP. JTS.

1/4"

LIMEROCK BASE SUBGRADE

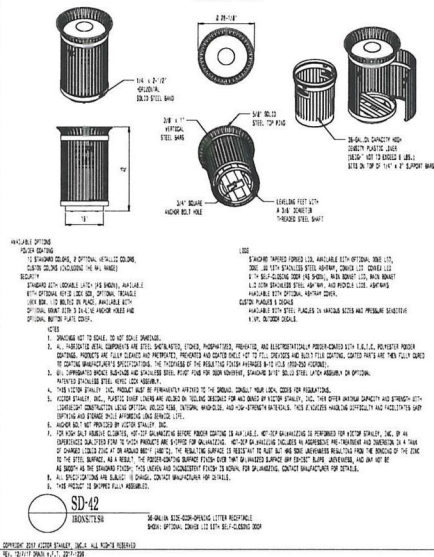
DETAIL

1. MANUFACTURER
WALSAUTILE, INC.
TROY DAHLKE
(813) 334-0016
WWW.WALSAUTILE.COM
(OR APPROVED EQUAL)
2. MODEL TF3528
3. COLOR A21 (BUFF)
4. SIZE 24" DIA. (ROUND)
5. INSTALLATION INSTALL ON 2X2
SQUARE CONCRETE PAD IN
LOCATIONS SHOWN ON PLANS
USING PROVIDED ANCHORING
INSERTS
6. QUANTITY 15
7. CONTRACTOR TO SUBMIT CUT
SHEET INCLUDING COLOR SAMPLE
FOR REVIEW AND APPROVAL



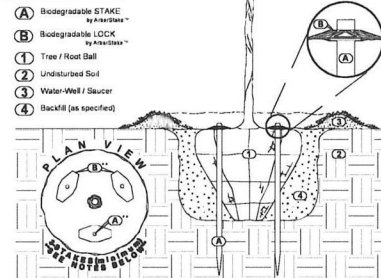
DETAIL

VICTOR STANLEY Create a timeless moment.



1 TRASH & RECYCLE RECEPTACLES MANUFACTURER'S DETAIL NTS

1. MANUFACTURER
ARBOR STAKES
(714) 410-6879
WWW.ARBORSTAKES.COM
(OR APPROVED EQUAL)
2. QUANTITY PER TREE: 3 MIN. + 1
STAKE FOR EVERY 1" CAL. MORE
THAN 3" FOR 5" CAL. TREE (GUSSET
STAKES)
3. CONTRACTOR TO PROVIDE SHOP
DRAWINGS INCLUDING FOOTING
REQUIREMENTS AS PER
CURRENT FLORIDA BUILDING
CODE.



NOTES:

- Minimum Stake Quantity is (3) - THEN - Add (1) Stake Per Caliper Inch Greater than 3"
- Stakes Shall Be Driven THROUGH The Root Ball As Shown
- Ensure Trunk Base (root flare) Is Free From Staking And Other Materials
- Aboveground Guying and/or Metallic Staking Systems NOT Allowed And Shall Be Rejected
- Install Staking System As Per Manufacturer's Instructions. www.arborstakes.com

2 TREE ANCHOR SYSTEM MANUFACTURER DETAIL NTS

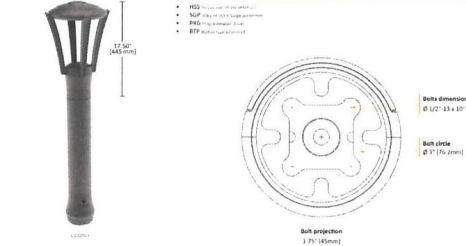
Submitting Agency: **SESCO**

Description:
CO42-18LED01-10W-VOLT-L3FL-30K-HSS-SGP-2
(1 VOLT)
CITY OF MIAMI BEACH - INDIAN CREEK GREENWAY
MODIFIED TO 100W

CITIi & COSMO

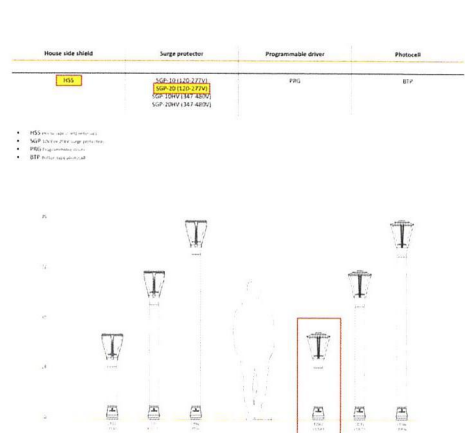


Product code	Source	Voltage	Distribution	CET	Options	Color	Anchor bolts
C042	18LED01-10W	120V	L1	SD	TYPE L1	SD	Supplied by lumina
C042	18LED01-10W	120V	L2	SD	TYPE L2	SD	Supplied by lumina
C042	18LED01-10W	120V	L3	SD	TYPE L3	SD	Supplied by lumina
C042	18LED01-10W	120V	L4	SD	TYPE L4	SD	Supplied by lumina
C042	18LED01-10W	120V	L5	SD	TYPE L5	SD	Supplied by lumina
C042	18LED01-10W	120V	L6	SD	TYPE L6	SD	Supplied by lumina
C042	18LED01-10W	120V	L7	SD	TYPE L7	SD	Supplied by lumina
C042	18LED01-10W	120V	L8	SD	TYPE L8	SD	Supplied by lumina
C042	18LED01-10W	120V	L9	SD	TYPE L9	SD	Supplied by lumina
C042	18LED01-10W	120V	L10	SD	TYPE L10	SD	Supplied by lumina



3 BOLLARD MANUFACTURER'S DETAIL NTS

Product code	Source	Voltage	Distribution	CET	Options	Color	Anchor bolts
C042	18LED01-10W	120V	L1	SD	TYPE L1	SD	Supplied by lumina
C042	18LED01-10W	120V	L2	SD	TYPE L2	SD	Supplied by lumina
C042	18LED01-10W	120V	L3	SD	TYPE L3	SD	Supplied by lumina
C042	18LED01-10W	120V	L4	SD	TYPE L4	SD	Supplied by lumina
C042	18LED01-10W	120V	L5	SD	TYPE L5	SD	Supplied by lumina
C042	18LED01-10W	120V	L6	SD	TYPE L6	SD	Supplied by lumina
C042	18LED01-10W	120V	L7	SD	TYPE L7	SD	Supplied by lumina
C042	18LED01-10W	120V	L8	SD	TYPE L8	SD	Supplied by lumina
C042	18LED01-10W	120V	L9	SD	TYPE L9	SD	Supplied by lumina
C042	18LED01-10W	120V	L10	SD	TYPE L10	SD	Supplied by lumina



Product code	Source	Voltage	Distribution	CET	Options	Color	Anchor bolts
C042	18LED01-10W	120V	L1	SD	TYPE L1	SD	Supplied by lumina
C042	18LED01-10W	120V	L2	SD	TYPE L2	SD	Supplied by lumina
C042	18LED01-10W	120V	L3	SD	TYPE L3	SD	Supplied by lumina
C042	18LED01-10W	120V	L4	SD	TYPE L4	SD	Supplied by lumina
C042	18LED01-10W	120V	L5	SD	TYPE L5	SD	Supplied by lumina
C042	18LED01-10W	120V	L6	SD	TYPE L6	SD	Supplied by lumina
C042	18LED01-10W	120V	L7	SD	TYPE L7	SD	Supplied by lumina
C042	18LED01-10W	120V	L8	SD	TYPE L8	SD	Supplied by lumina
C042	18LED01-10W	120V	L9	SD	TYPE L9	SD	Supplied by lumina
C042	18LED01-10W	120V	L10	SD	TYPE L10	SD	Supplied by lumina



12/06/18

DATE

SCALE

DESIGNED BY

DRAWN BY

CHECKED BY

APPROVED BY

INDIAN CREEK GREENWAY

PREPARED FOR

CITY OF MIAMI BEACH

HARDSCAPE DETAILS

Scott Wade Peavler

Digitally signed by Scott Wade Peavler

2023.12.01 15:25:33 -0500

PROJECT NO.

18-0043-001-01

HD-2

SHEET 2 OF 2

CRAVEN THOMPSON AND ASSOCIATES, INC.

ENGINEERS • PLANNERS • SURVEYORS

3355 N.W. 33RD STREET, FORT LAUDERDALE, FLORIDA 33309

TEL: (954) 474-8888 FAX: (954) 474-8889

WWW.CTASOCIATES.COM

INDIAN CREEK GREENWAY

PREPARED FOR

CITY OF MIAMI BEACH

HARDSCAPE DETAILS