

LIGHTING AND SIDEWALK IMPROVEMENTS

CITY OF MIAMI BEACH

OCEAN DRIVE

Calvin, Giordano & Associates, Inc.



CITY OF MIAMI BEACH

OCEAN DRIVE | LIGHTING AND SIDEWALK IMPROVEMENTS

PUBLIC MEETING
MARCH 2025

2 Concurrent projects:

IMPLEMENTING THE ADCD VISION PLAN (OCEAN DR. CORRIDOR AND LUMMUS PARK ENHANCEMENT PROJECT):

- sometimes referred to as the 'long-term' project
- "a complex, multi-year endeavor that involves comprehensive design, permitting and construction"
- the 'long-term' project requires evaluations of all 3 ADCD options for Ocean Drive to FIRST obtain approval from BOTH Miami-Dade County and the Florida Dept of Transportation on the selected traffic configuration
- once the traffic studies are completed and agency approvals are obtained, site design and site engineering can begin

LIGHTING AND SIDEWALK IMPROVEMENTS:

- sometimes referred to as the 'short-term' project
- replacement of existing sidewalks and lighting improvements
- focuses on the importance of lighting and sidewalk improvements to enhance safety, accessibility, and aesthetics, and seeks to advance these enhancements



Objectives - 'Short Term' project

1. **Replace existing sidewalks**
no impacts to traffic geometries, drainage patterns, or underground infrastructure
2. **Propose options for lighting along the west side of Ocean Drive**



Design Considerations

1. Enhance Safety and Accessibility
2. Cost of Implementation
3. Cost of Maintenance
4. Ease of Repair and Longevity
5. Sensitivity to Local Businesses



CITY OF MIAMI BEACH

OCEAN DRIVE | LIGHTING AND SIDEWALK IMPROVEMENTS

PUBLIC MEETING
MARCH 2025

Agenda

1. Discuss Paving Strategies and Approaches
2. Discuss the 'pros' and 'cons' of the various hardscape alternatives
3. Showcase proposed design options
4. Discuss lighting strategy for Ocean Drive



Basis of Design

01



CITY OF MIAMI BEACH

OCEAN DRIVE | LIGHTING AND SIDEWALK IMPROVEMENTS

PUBLIC MEETING
MARCH 2025

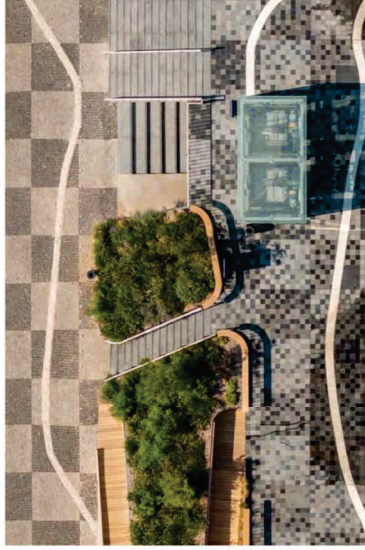
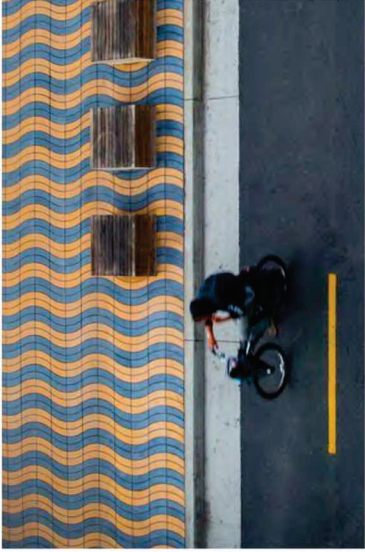
Paving Strategies and Approaches



CITY OF MIAMI BEACH

OCEAN DRIVE | LIGHTING AND SIDEWALK IMPROVEMENTS

PUBLIC MEETING
MARCH 2025



The Value of Paving Design



CITY OF MIAMI BEACH

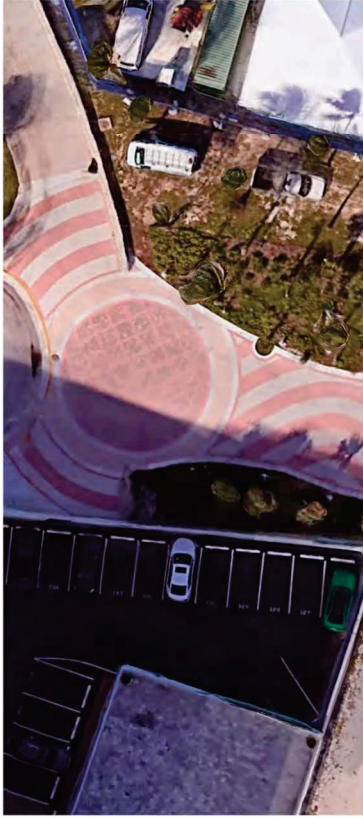
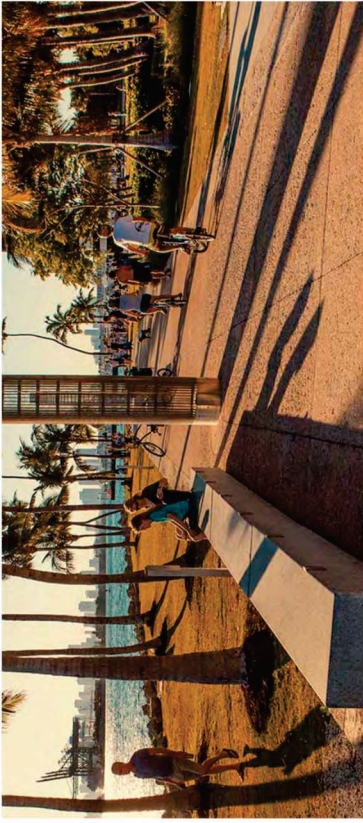
OCEAN DRIVE | LIGHTING AND SIDEWALK IMPROVEMENTS

PUBLIC MEETING
MARCH 2025

8

01 MODULE

BASIS OF DESIGN



Paving Precedents - Local



CITY OF MIAMI BEACH

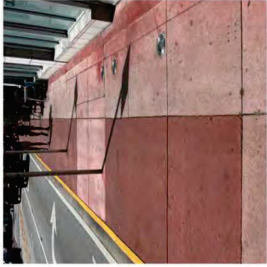
OCEAN DRIVE | LIGHTING AND SIDEWALK IMPROVEMENTS

PUBLIC MEETING
MARCH 2025

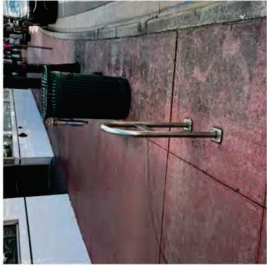
9

01 MODULE

BASIS OF DESIGN



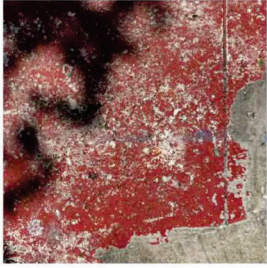
INTEGRAL COLOR
RED CONCRETE



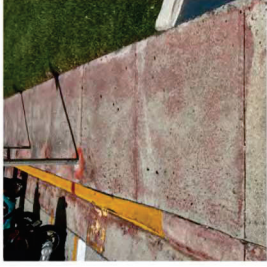
INTEGRAL COLOR
RED CONCRETE



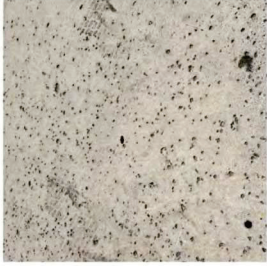
INTEGRAL COLOR RED
CONCRETE WITH EXPOSED
SHELL AGGREGATE



NATURAL COLOR CONCRETE
WITH SURFACE PAINT



NATURAL COLOR CONCRETE
WITH SURFACE STAIN



NATURAL COLOR CONCRETE
SALT FINISH



COBBLESTONE PAVER



INTEGRAL COLORED
CONCRETE PAVER



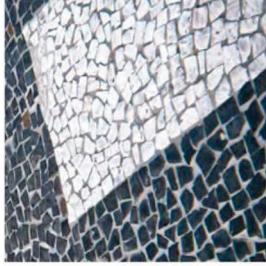
INTEGRAL COLORED
CONCRETE PAVER



INTEGRAL COLORED
CONCRETE PAVER



SQUARE GRANITE PAVER



PIEDRA PORTUGUESA

Paving Precedents - Local



'Pros' and 'Cons' of the various alternatives



CITY OF MIAMI BEACH

OCEAN DRIVE | LIGHTING AND SIDEWALK IMPROVEMENTS

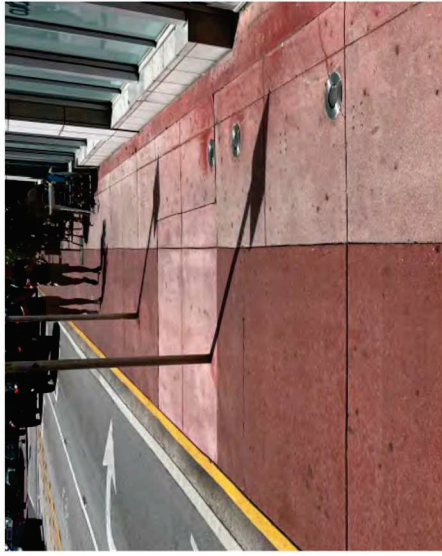
PUBLIC MEETING
MARCH 2025

11

01 MODULE

BASIS OF DESIGN

INTEGRAL COLORED CONCRETE



- Most widely used material
- Can be colored (Integral color preferred)
- Easy to repair and replace
- Easy to maintain via pressure washing
- Most inexpensive of all options
- Relatively fast to install
- Color will always fade, resulting in a patchwork when replaced
- Designs are subject to limitations of formwork

EXPOSED SHELL CONCRETE



- Refined application and appearance
- Can be colored (Integral color preferred)
- Relatively easy to maintain via pressure washing
- Requires skilled installers
- More difficult to repair and replace while keeping a seamless quality
- Color will always fade, resulting in a patchwork when replaced
- More prone to dirt accumulation
- Increased costs of installation

Paving Alternatives



CITY OF MIAMI BEACH

OCEAN DRIVE | LIGHTING AND SIDEWALK IMPROVEMENTS

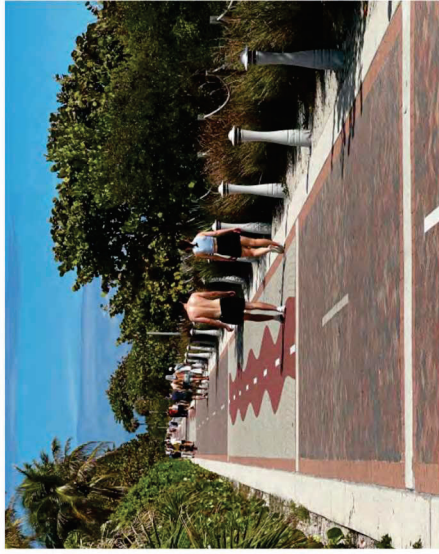
PUBLIC MEETING
MARCH 2025

12

01 MODULE

BASIS OF DESIGN

CONCRETE PAVERS



- Widely used and proven material throughout the City
- Available with exposed shell finish and in a variety of colors
- Relatively easy to maintain via pressure washing
- Generally repairs aren't needed for the first 5 years
- Can accommodate intricate designs
- Can be easily repaired by City Staff
- Color will fade, resulting in a patchwork when replaced
- Excessively intricate designs can result in many 'cut' pieces
- Intricate designs need more maintenance

COBBLESTONE



- Relatively easy to maintain via pressure washing
- Unique character that is more traditional & historic-leaning
- Design options are more restrictive
- Material requires a lot of maintenance
- Staff has noted that it is very difficult to get repairs to be seamless
- Requires greater skill for repair

PEDRA PORTUGUESA



- Intricate patterns can be achieved by varying the sizes of the stones
- Colors are limited to what can be supplied
- Very difficult to repair and replace
- Requires highly-skilled installers to achieve seamless look
- Concerns about slip-and-fall due to the polished finish on the stone
- Large grout joints show patchwork where repairs are done
- Difficulty to achieve a smooth, flat surface for tables and chairs
- Very expensive



CITY OF MIAMI BEACH

OCEAN DRIVE | LIGHTING AND SIDEWALK IMPROVEMENTS

PUBLIC MEETING

MARCH 2025

13

CONCRETE PAVERS



- Widely used and proven material throughout the City
- Available with exposed shell finish and in a variety of colors
- Relatively easy to maintain via pressure washing
- Generally repairs aren't needed for the first 5 years
- Can accommodate intricate designs
- Can be easily repaired by City Staff
- *Color will fade, resulting in a patchwork when replaced*
- *Excessively intricate designs can result in many 'cut' pieces*
- *Intricate designs need more maintenance*



Material Recommendation



CITY OF MIAMI BEACH

OCEAN DRIVE | LIGHTING AND SIDEWALK IMPROVEMENTS

PUBLIC MEETING
MARCH 2025

14

01 MODULE

BASIS OF DESIGN

Proposed Alternatives

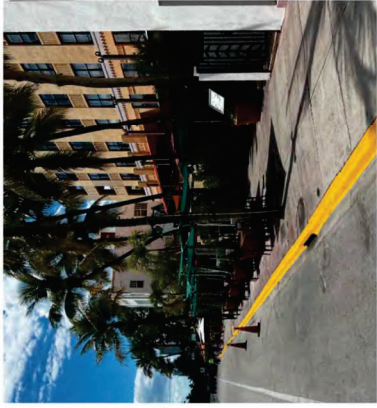
02



CITY OF MIAMI BEACH

OCEAN DRIVE | LIGHTING AND SIDEWALK IMPROVEMENTS

PUBLIC MEETING
MARCH 2025



Existing sidewalks

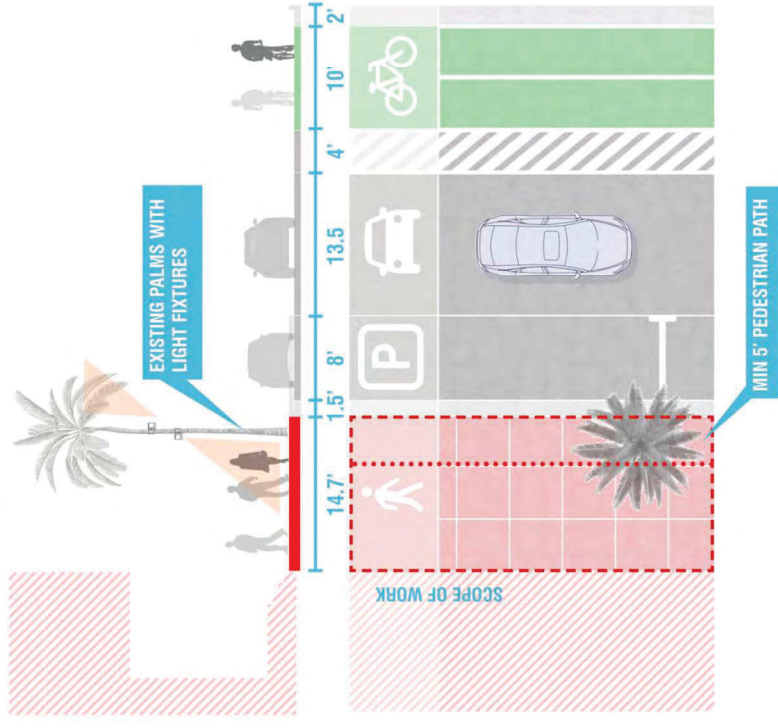


CITY OF MIAMI BEACH

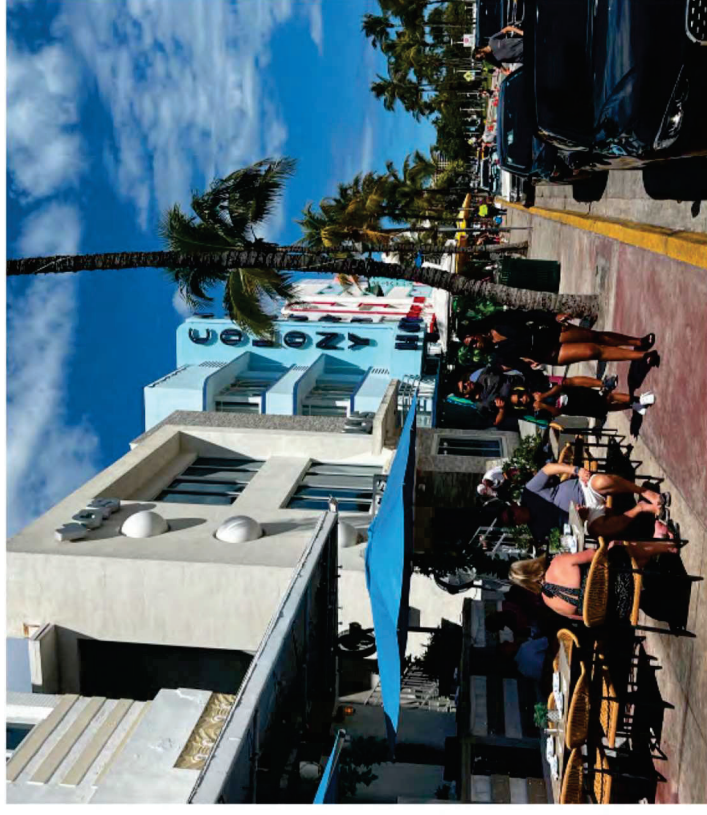
OCEAN DRIVE | LIGHTING AND SIDEWALK IMPROVEMENTS

PUBLIC MEETING
MARCH 2025

EXISTING SECTION



EXISTING CONDITION



Existing sidewalks



CITY OF MIAMI BEACH

OCEAN DRIVE | LIGHTING AND SIDEWALK IMPROVEMENTS

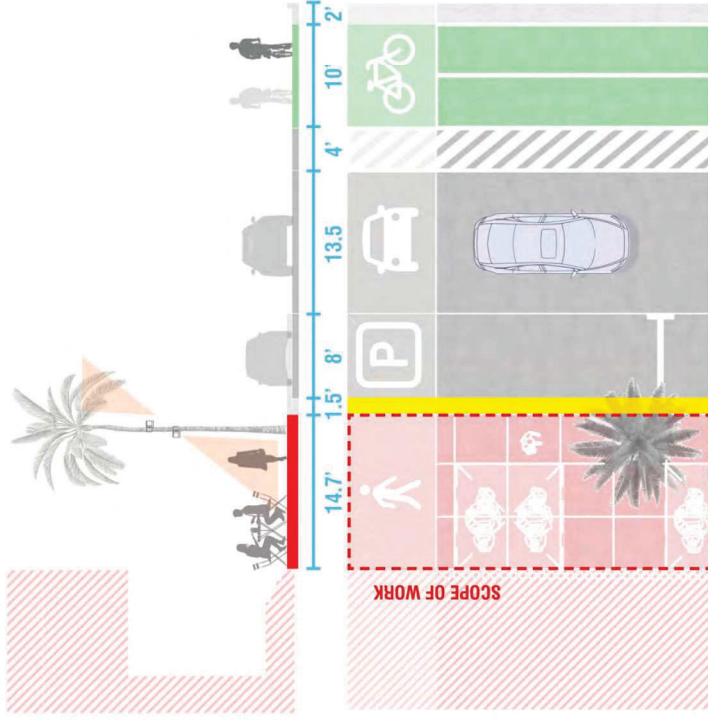
PUBLIC MEETING
MARCH 2025

17

02MODULE

PROPOSED ALTERNATIVES

EXISTING SECTION



EXISTING CONDITION



Existing sidewalks



CITY OF MIAMI BEACH

OCEAN DRIVE | LIGHTING AND SIDEWALK IMPROVEMENTS

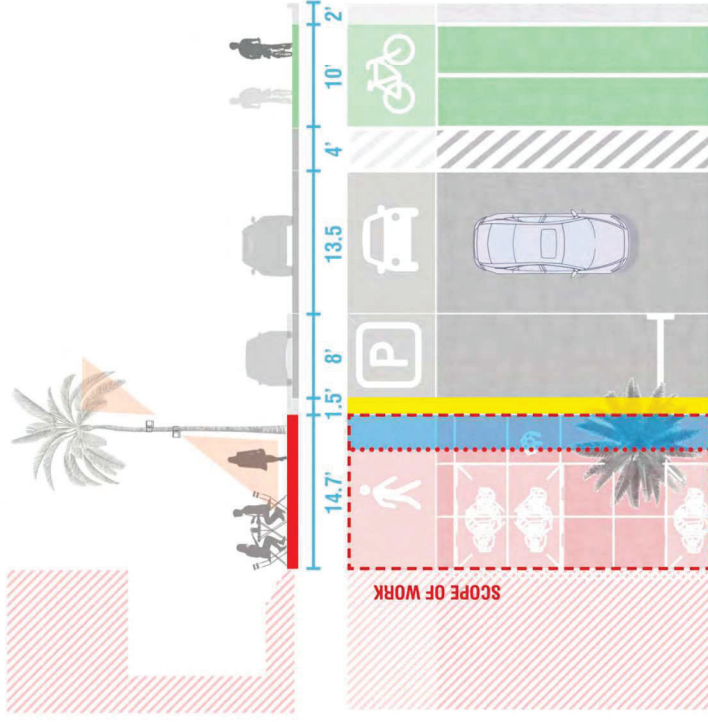
PUBLIC MEETING
MARCH 2025

18

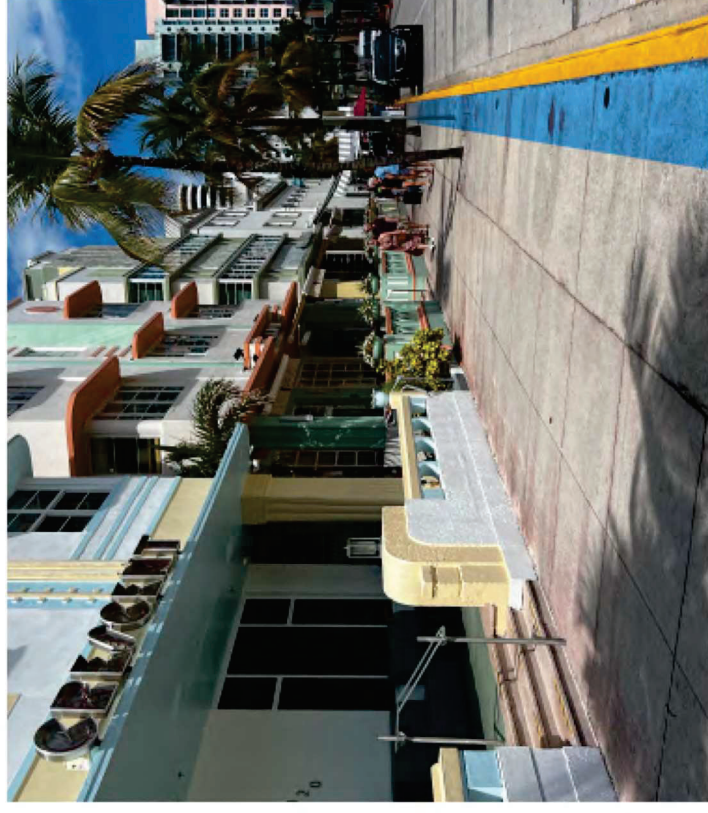
02MODULE

PROPOSED ALTERNATIVES

EXISTING SECTION



EXISTING CONDITION



Existing sidewalks



CITY OF MIAMI BEACH

OCEAN DRIVE | LIGHTING AND SIDEWALK IMPROVEMENTS

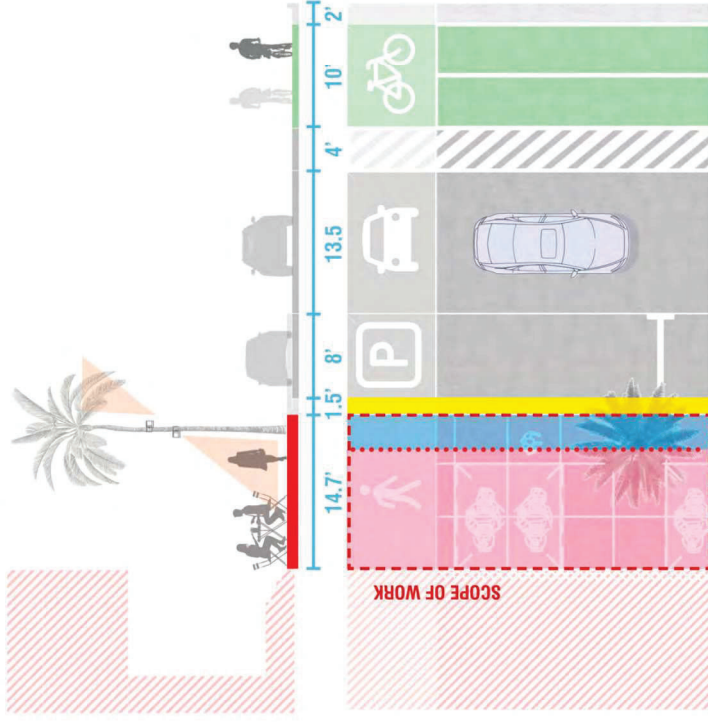
PUBLIC MEETING
MARCH 2025

19

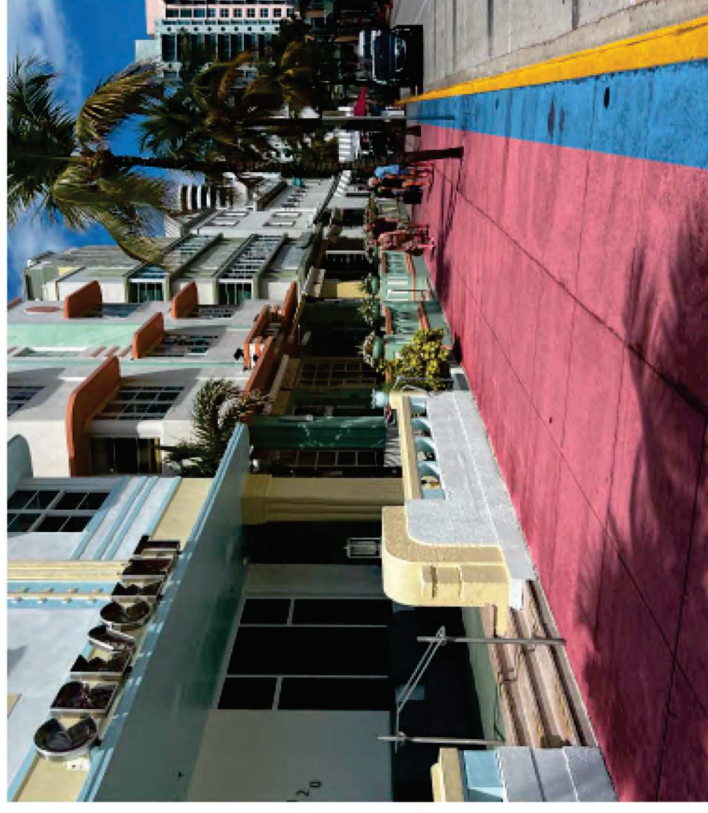
02MODULE

PROPOSED ALTERNATIVES

EXISTING SECTION



EXISTING CONDITION



Existing sidewalks

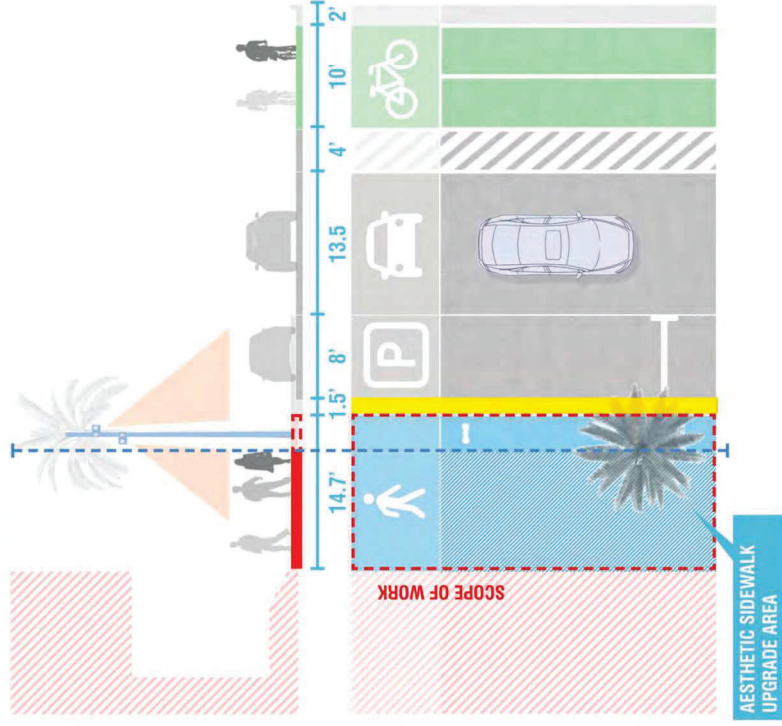


CITY OF MIAMI BEACH

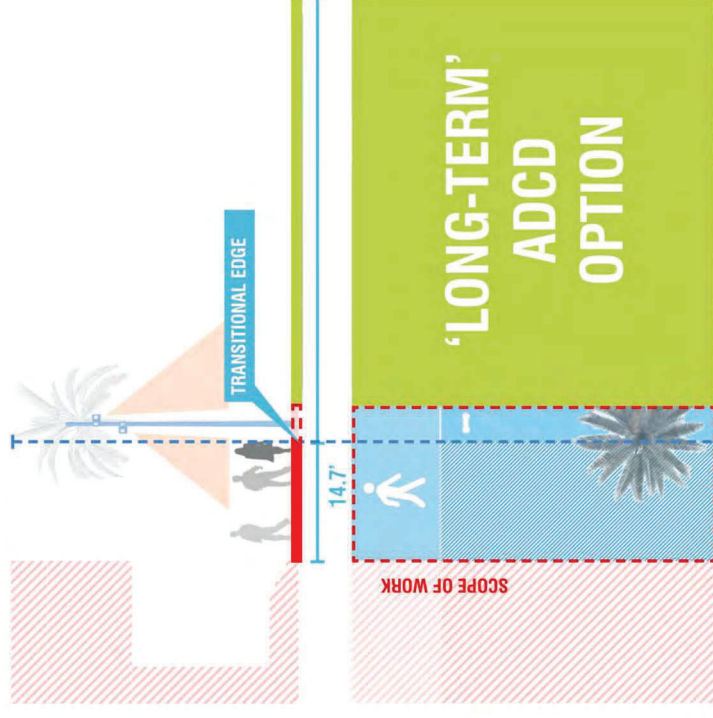
OCEAN DRIVE | LIGHTING AND SIDEWALK IMPROVEMENTS

PUBLIC MEETING
MARCH 2025

PROPOSED SECTION



PROPOSED SECTION



Proposed sidewalks

SINGLE BLOCK DIAGRAM



PROPOSED ALTERNATIVES

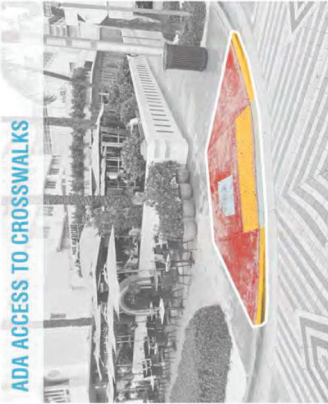
02MODULE

22

PUBLIC MEETING
MARCH 2025

OCEAN DRIVE | LIGHTING AND SIDEWALK IMPROVEMENTS

ADA ACCESS TO CROSSWALKS



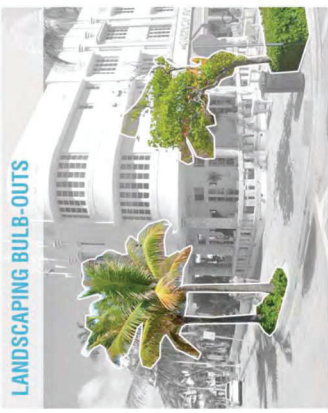
UTILITY POLES



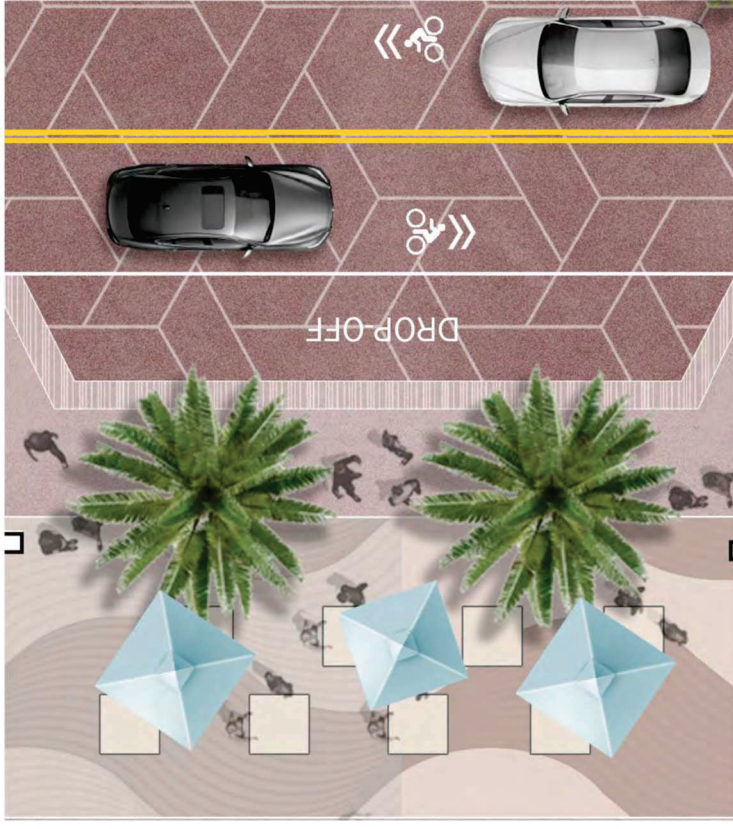
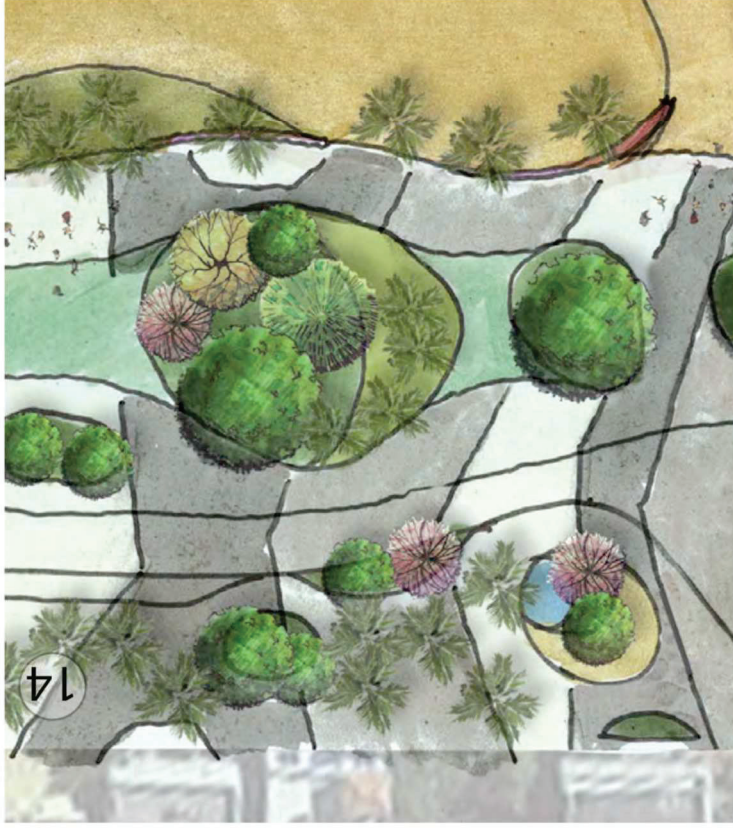
VEHICULAR TRAFFIC SIGNALIZATION



LANDSCAPING BULB-OUTS



Typical corner condition



ADCD Vision Plan - Paving



CITY OF MIAMI BEACH

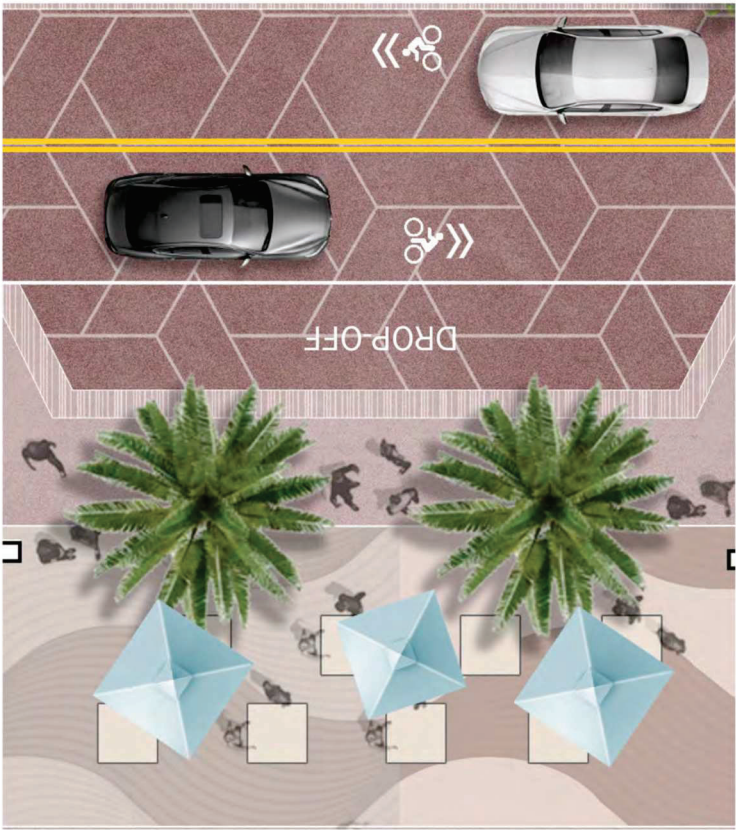
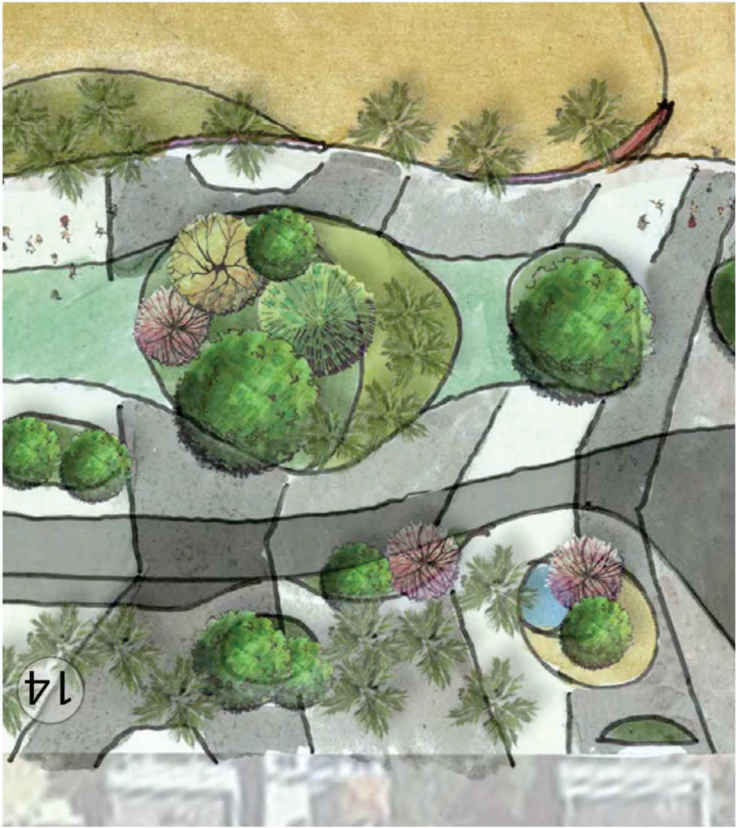
OCEAN DRIVE | LIGHTING AND SIDEWALK IMPROVEMENTS

PUBLIC MEETING
MARCH 2025

23

02MODULE

PROPOSED ALTERNATIVES



ADCD Vision Plan - Paving

PROPOSED ALTERNATIVES

02MODULE

24

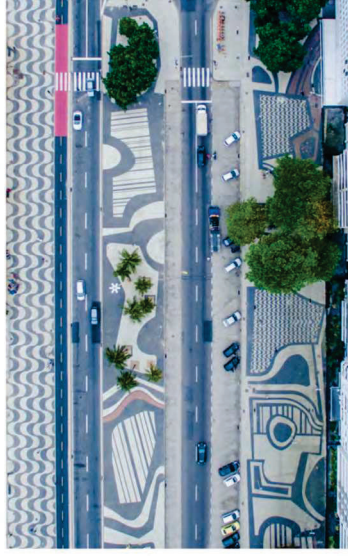
PUBLIC MEETING
MARCH 2025

OCEAN DRIVE | LIGHTING AND SIDEWALK IMPROVEMENTS

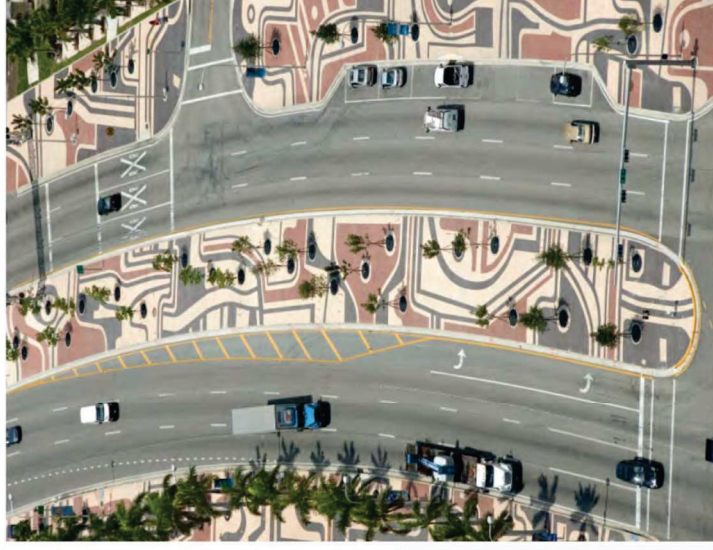


CITY OF MIAMI BEACH

COPACABANA



BISCAYNE BOULEVARD



LINCOLN ROAD (1100 BLOCK)



ADCD MASTERPLAN



Paving Precedents - Local



CITY OF MIAMI BEACH

OCEAN DRIVE | LIGHTING AND SIDEWALK IMPROVEMENTS

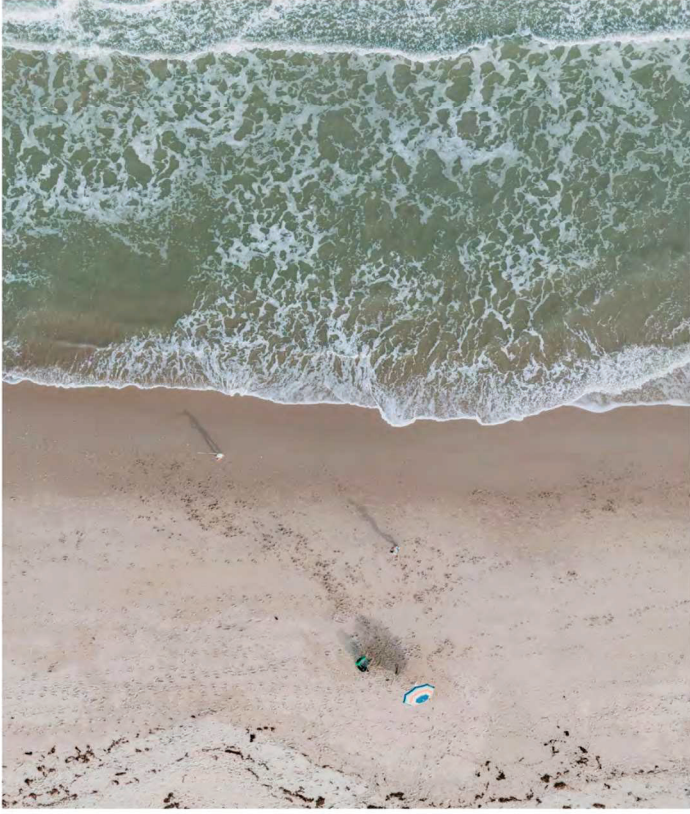
PUBLIC MEETING
MARCH 2025

25

01 MODULE

BASIS OF DESIGN

ATLANTIC OCEAN



MIAMI BEACH ART DECO



Design inspiration

PROPOSED ALTERNATIVES

02MODULE



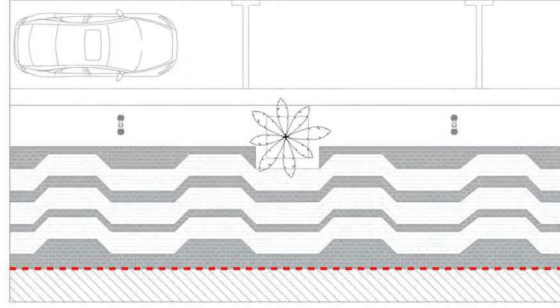
CITY OF MIAMI BEACH

OCEAN DRIVE | LIGHTING AND SIDEWALK IMPROVEMENTS

PUBLIC MEETING
MARCH 2025

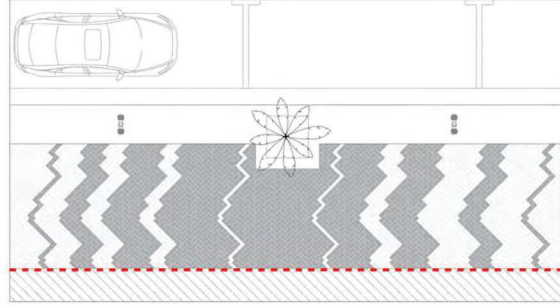
26

OPTION 01



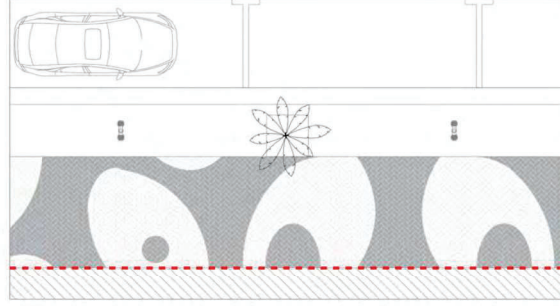
SOLDIER COURSE PATTERN

OPTION 02



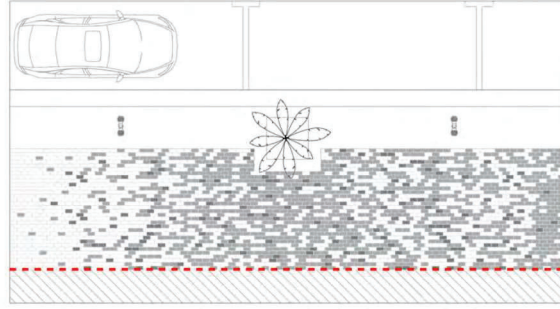
HERRINGBONE PATTERN

OPTION 03



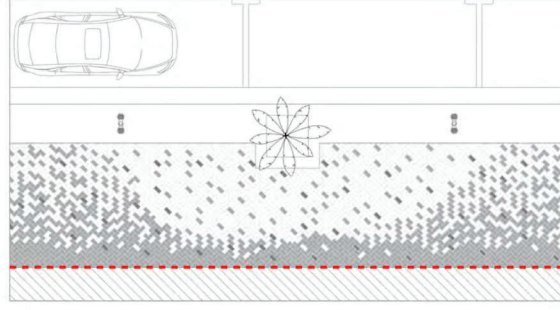
HERRINGBONE PATTERN

OPTION 04



SOLDIER COURSE RANDOMIZED

OPTION 05



HERRINGBONE PATTERN RANDOMIZED

PROPOSED ALTERNATIVES

02MODULE

27

Paving patterns modules



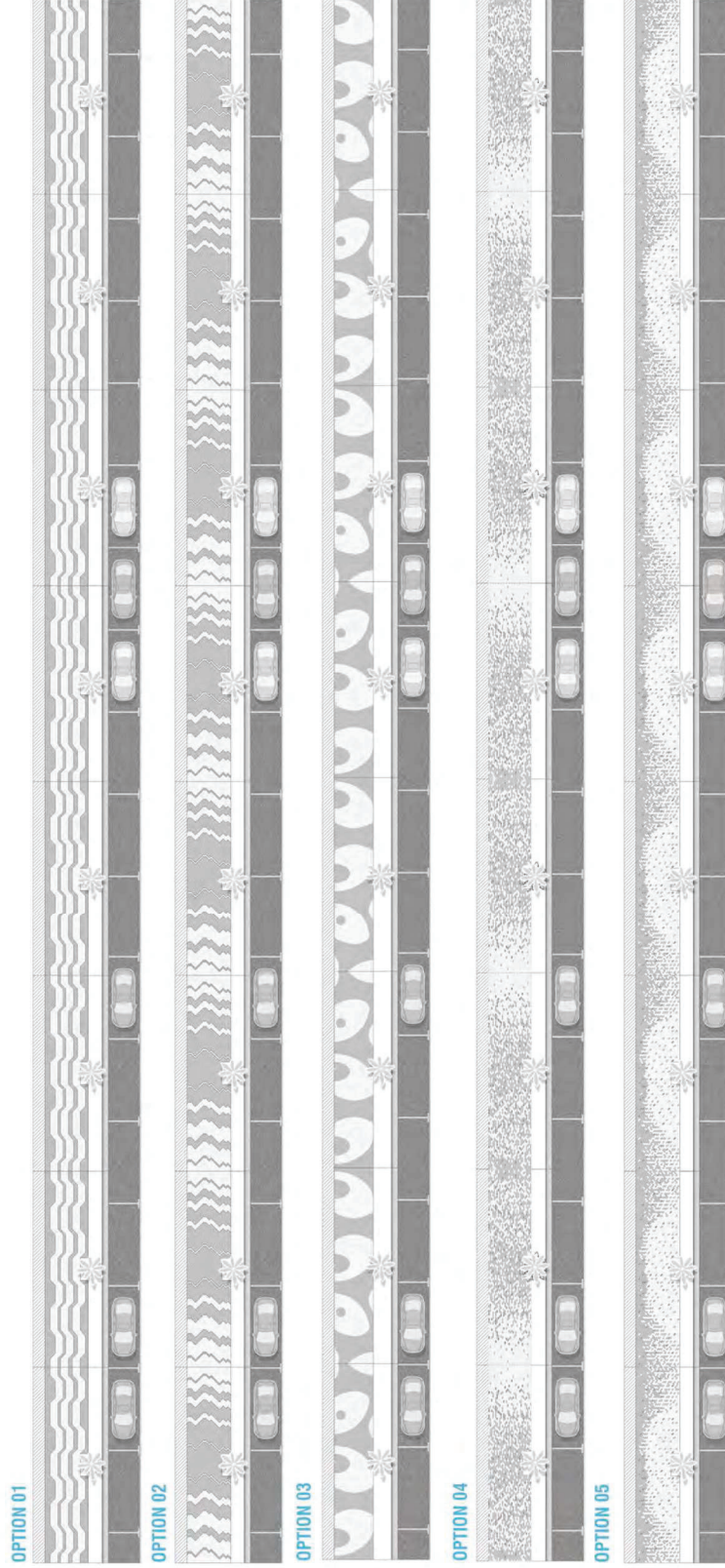
CITY OF MIAMI BEACH

OCEAN DRIVE | LIGHTING AND SIDEWALK IMPROVEMENTS

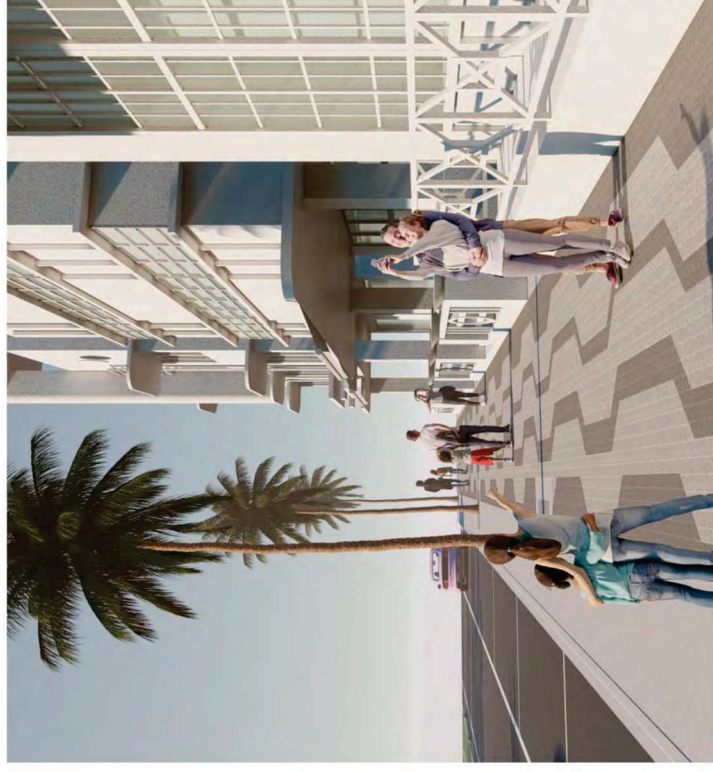
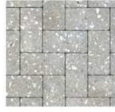
PUBLIC MEETING
MARCH 2025



Paving patterns modules



OPTION 01 A
SOLDIER COURSE/ PAVERS 4"X8"

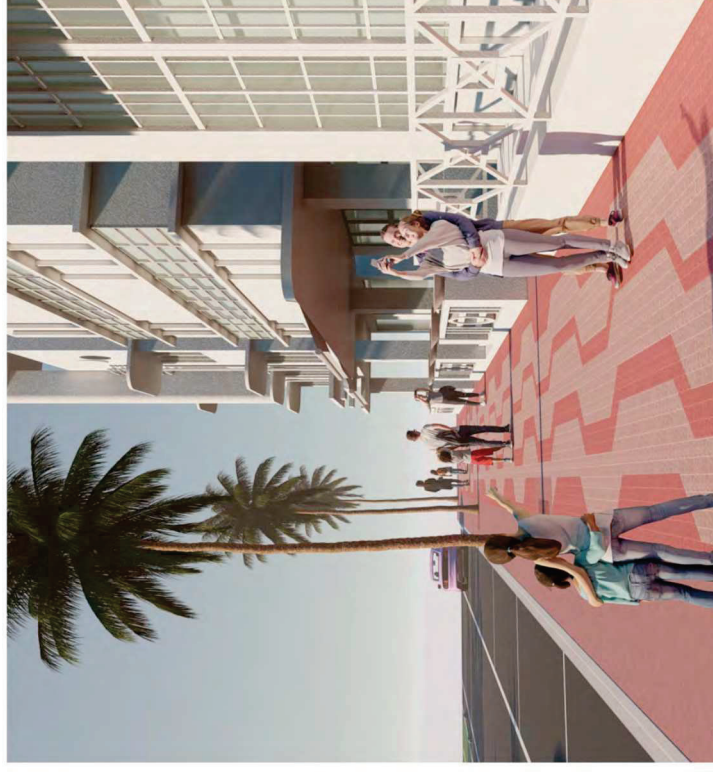


CITY OF MIAMI BEACH

OCEAN DRIVE | LIGHTING AND SIDEWALK IMPROVEMENTS

PUBLIC MEETING
MARCH 2025

OPTION 01 B
SOLDIER COURSE/ PAVERS 4"X8"



CITY OF MIAMI BEACH

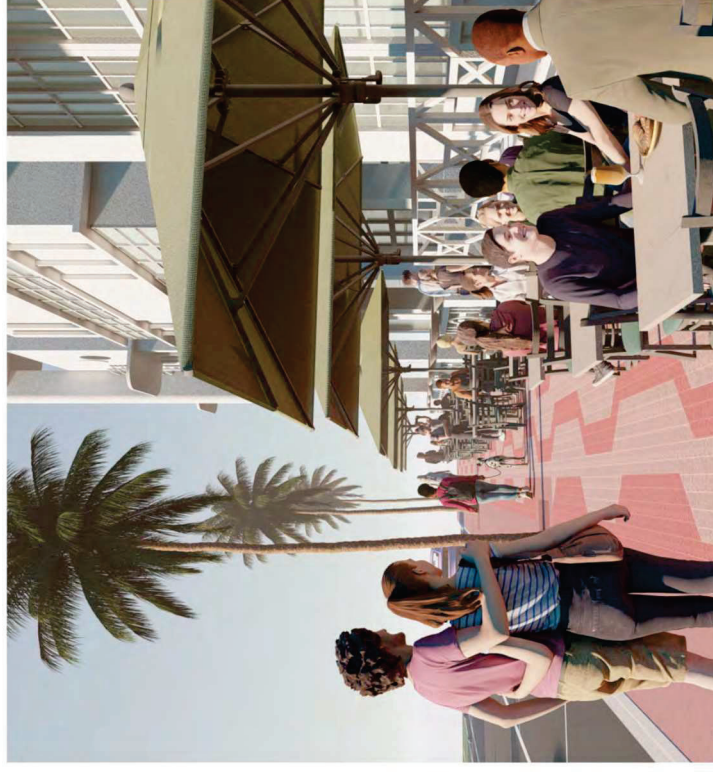
OCEAN DRIVE | LIGHTING AND SIDEWALK IMPROVEMENTS

PUBLIC MEETING
MARCH 2025

OPTION 01 SEATING
SOLDIER COURSE/ PAVERS 4"X8"



ACCESS TO MANHOLES & TREES

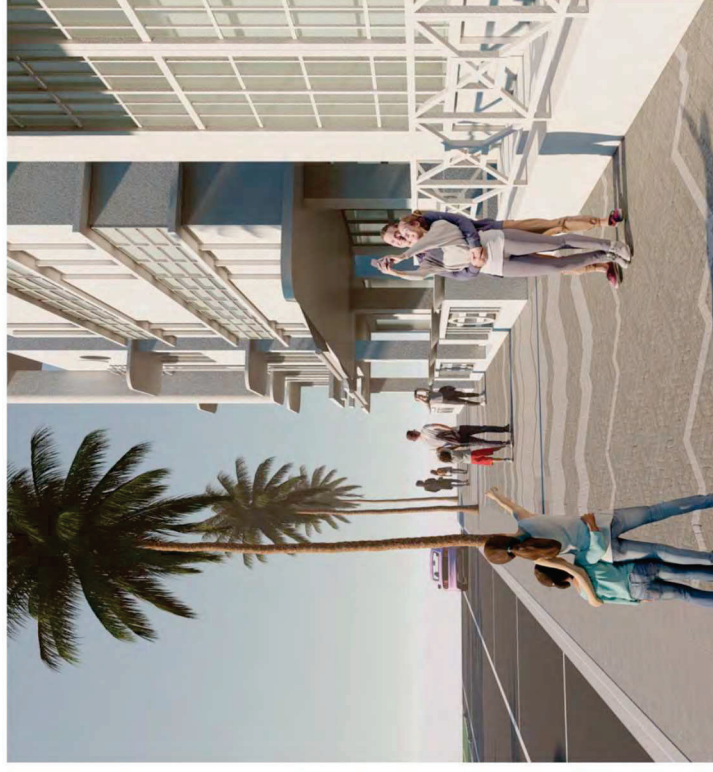
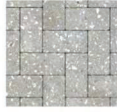


CITY OF MIAMI BEACH

OCEAN DRIVE | LIGHTING AND SIDEWALK IMPROVEMENTS

PUBLIC MEETING
MARCH 2025

OPTION 02 A
HERRINGBONE PATTERN/ PAVERS 4"X8"

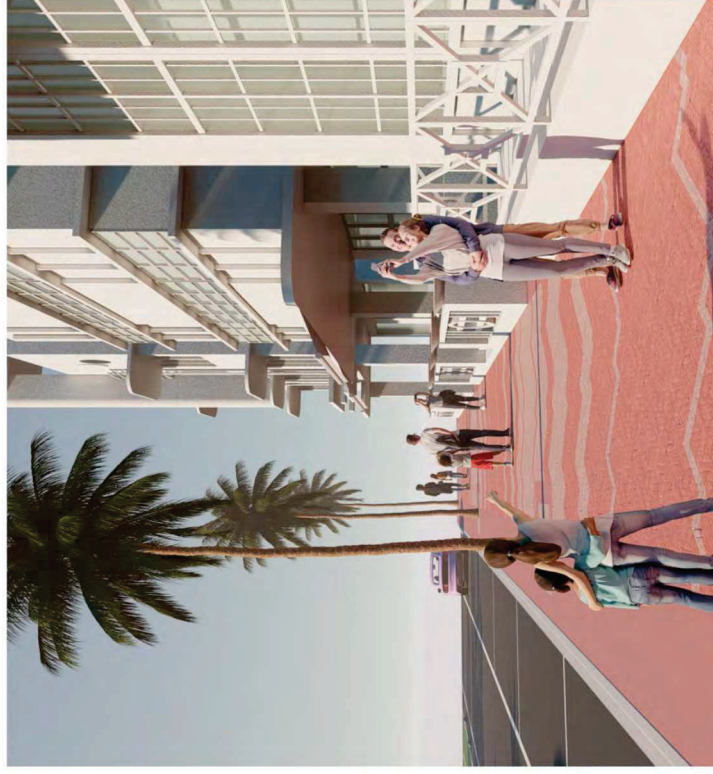


CITY OF MIAMI BEACH

OCEAN DRIVE | LIGHTING AND SIDEWALK IMPROVEMENTS

PUBLIC MEETING
MARCH 2025

OPTION 02 B
HERRINGBONE PATTERN/ PAVERS 4"X8"



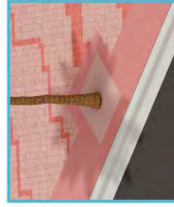
CITY OF MIAMI BEACH

OCEAN DRIVE | LIGHTING AND SIDEWALK IMPROVEMENTS

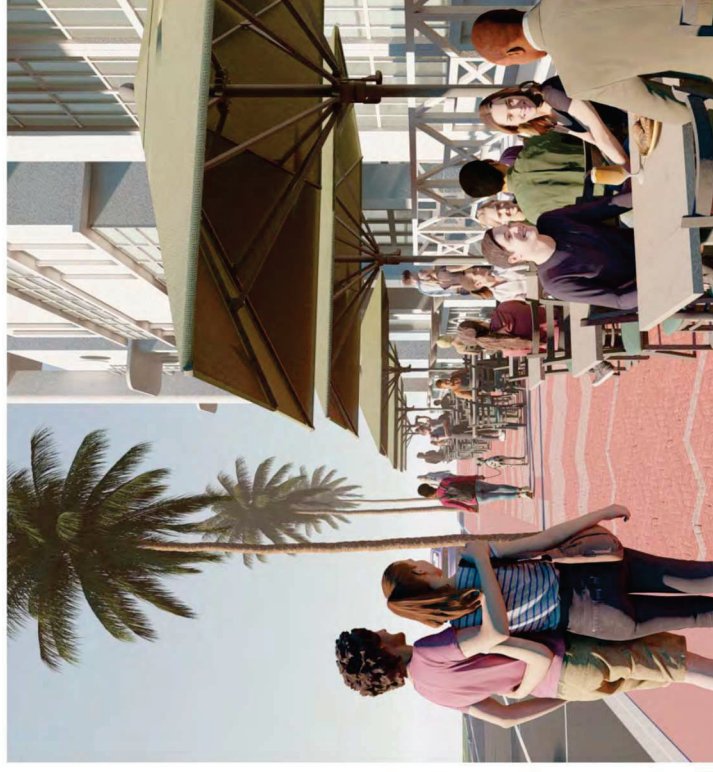
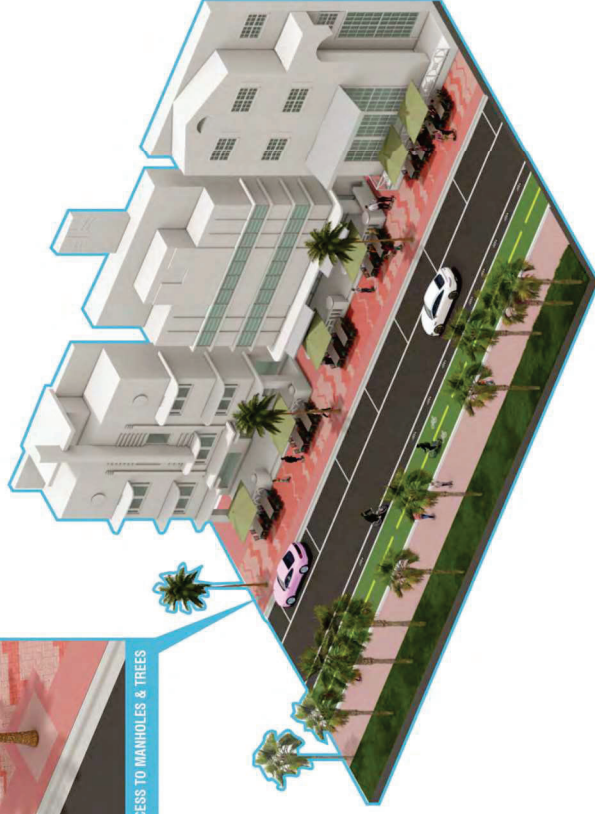
PUBLIC MEETING
MARCH 2025

OPTION 02 SEATING

HERRINGBONE PATTERN/ PAVERS 4"X8"



ACCESS TO MANHOLES & TREES

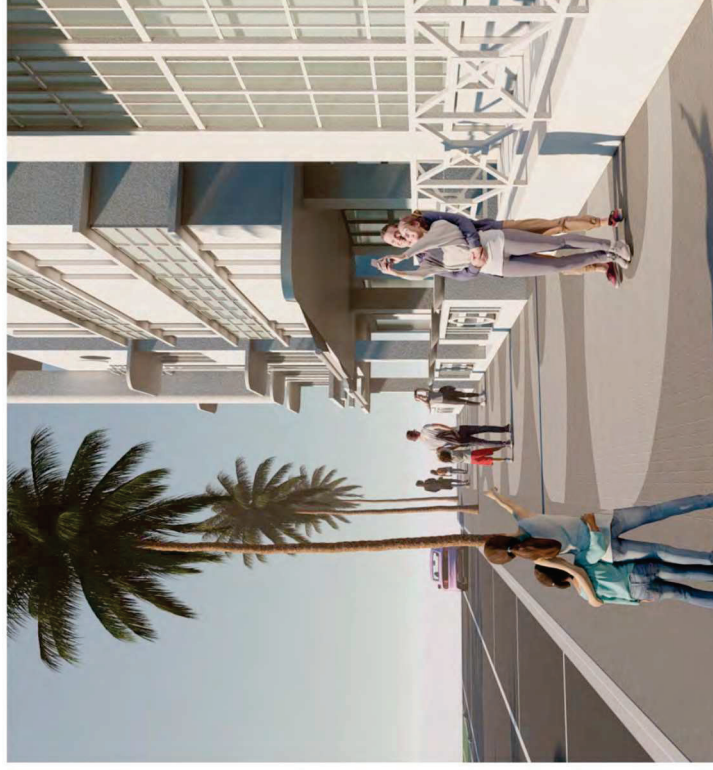
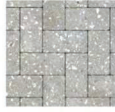


CITY OF MIAMI BEACH

OCEAN DRIVE | LIGHTING AND SIDEWALK IMPROVEMENTS

PUBLIC MEETING
MARCH 2025

OPTION 03 A
HERRINGBONE PATTERN/ PAVERS 4"X8"

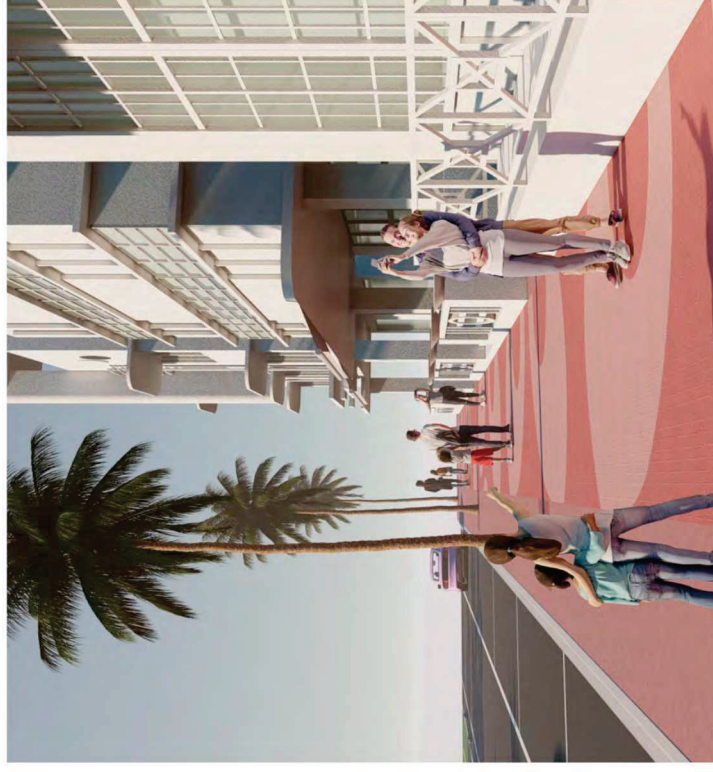
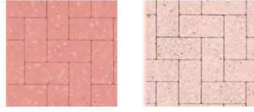


CITY OF MIAMI BEACH

OCEAN DRIVE | LIGHTING AND SIDEWALK IMPROVEMENTS

PUBLIC MEETING
MARCH 2025

OPTION 03 B
HERRINGBONE PATTERN/ PAVERS 4"X8"



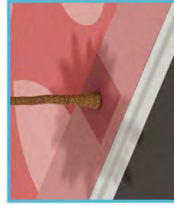
CITY OF MIAMI BEACH

OCEAN DRIVE | LIGHTING AND SIDEWALK IMPROVEMENTS

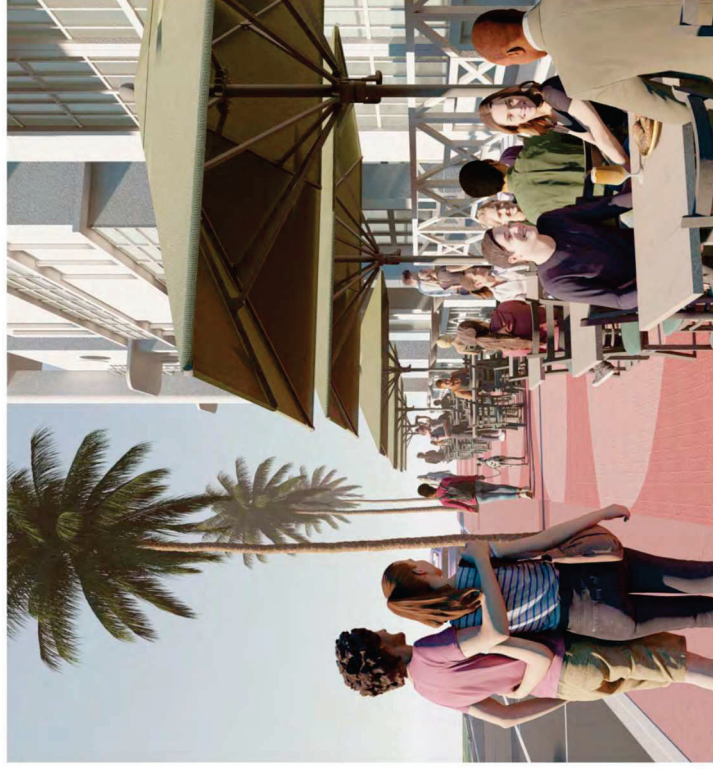
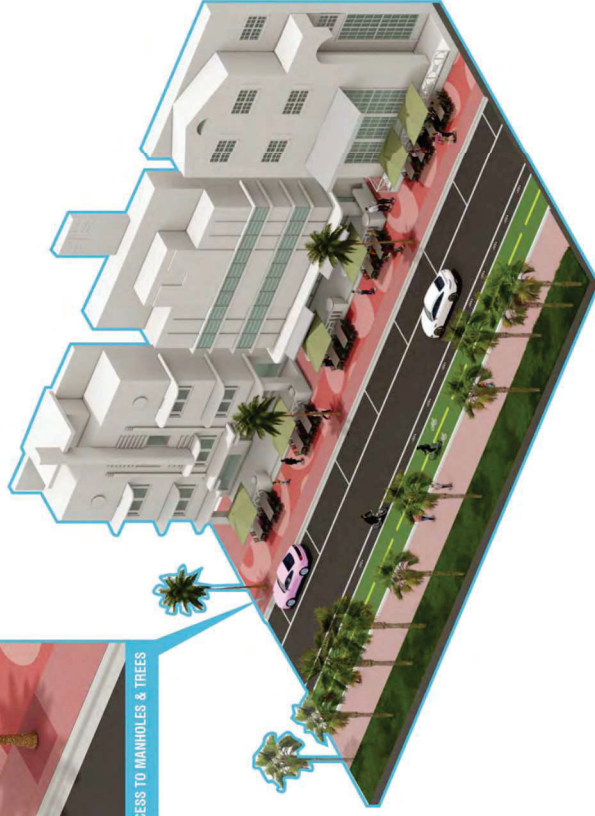
PUBLIC MEETING
MARCH 2025

OPTION 03 SEATING

HERRINGBONE PATTERN/ PAVERS 4"X8"



ACCESS TO MANHOLES & TREES

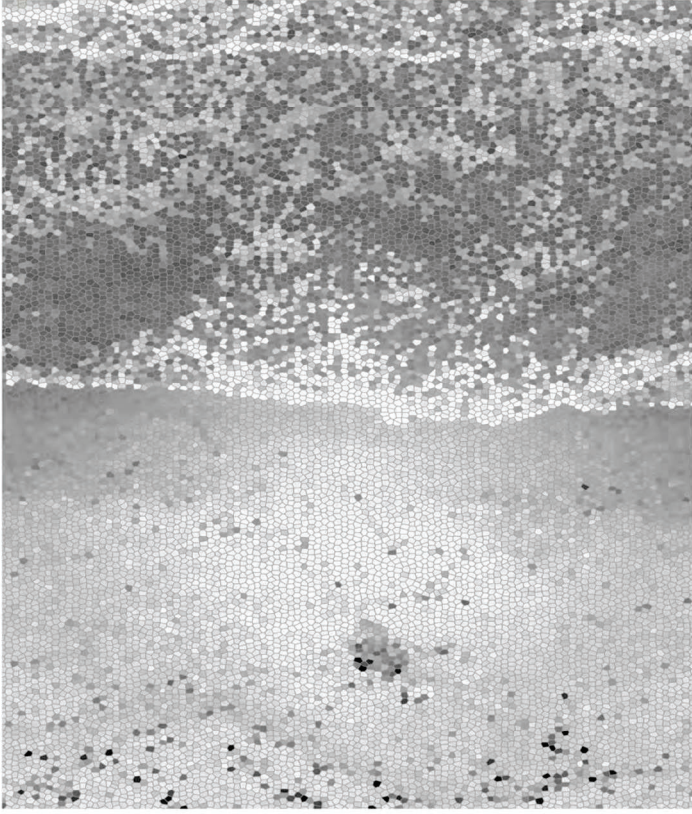


CITY OF MIAMI BEACH

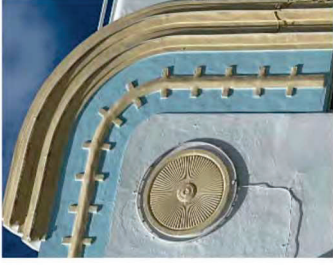
OCEAN DRIVE | LIGHTING AND SIDEWALK IMPROVEMENTS

PUBLIC MEETING
MARCH 2025

ATLANTIC OCEAN



MIAMI BEACH ART DECO



Design inspiration

PROPOSED ALTERNATIVES

02MODULE



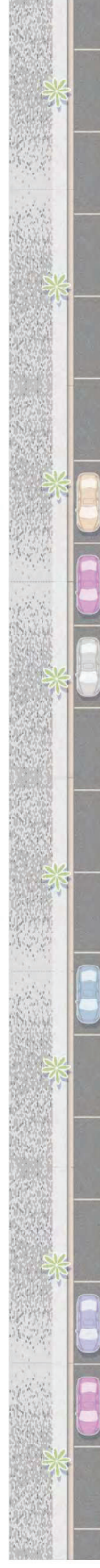
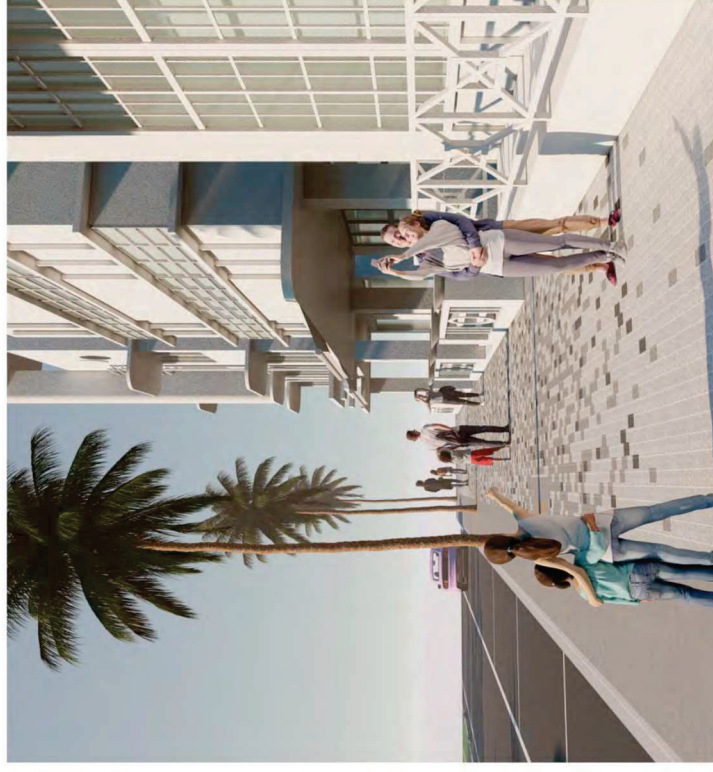
CITY OF MIAMI BEACH

OCEAN DRIVE | LIGHTING AND SIDEWALK IMPROVEMENTS

PUBLIC MEETING

MARCH 2025

OPTION 04 A
SOLDIER COURSE/ PAVERS 4"X8"

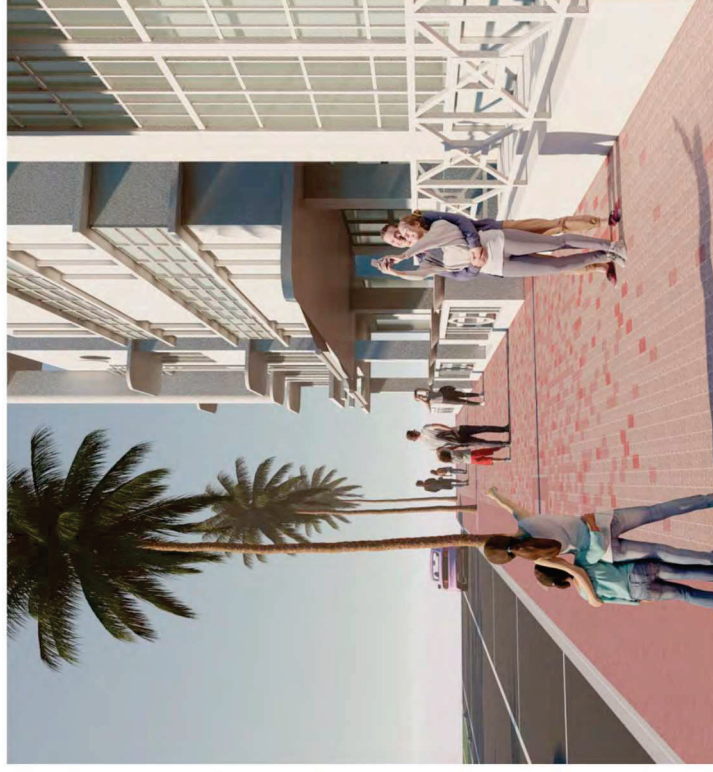
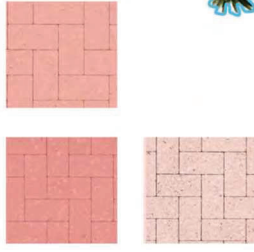


CITY OF MIAMI BEACH

OCEAN DRIVE | LIGHTING AND SIDEWALK IMPROVEMENTS

PUBLIC MEETING
MARCH 2025

OPTION 04 B
SOLDIER COURSE/ PAVERS 4"X8"



CITY OF MIAMI BEACH

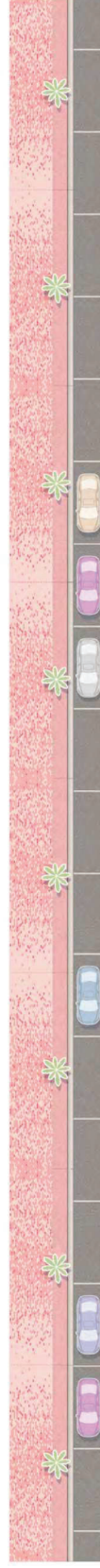
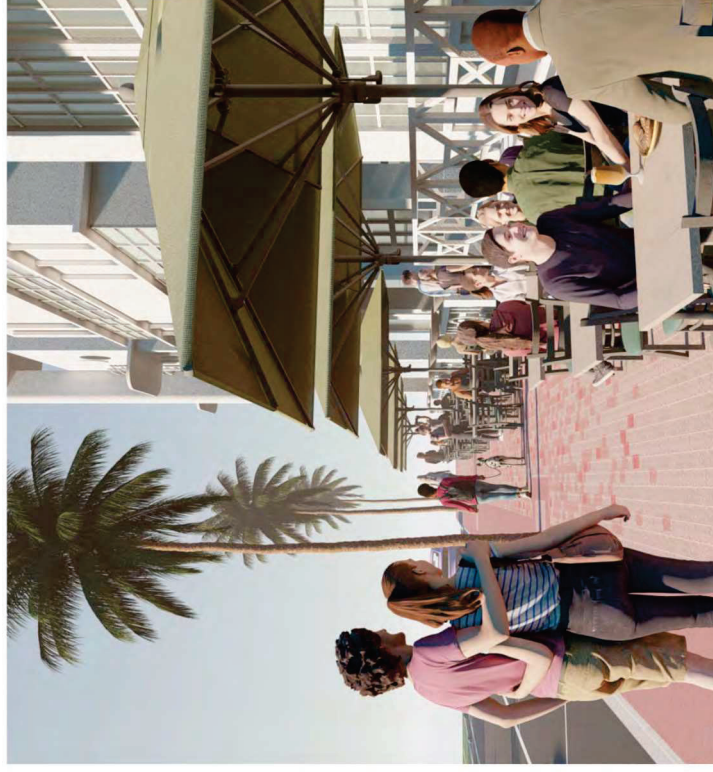
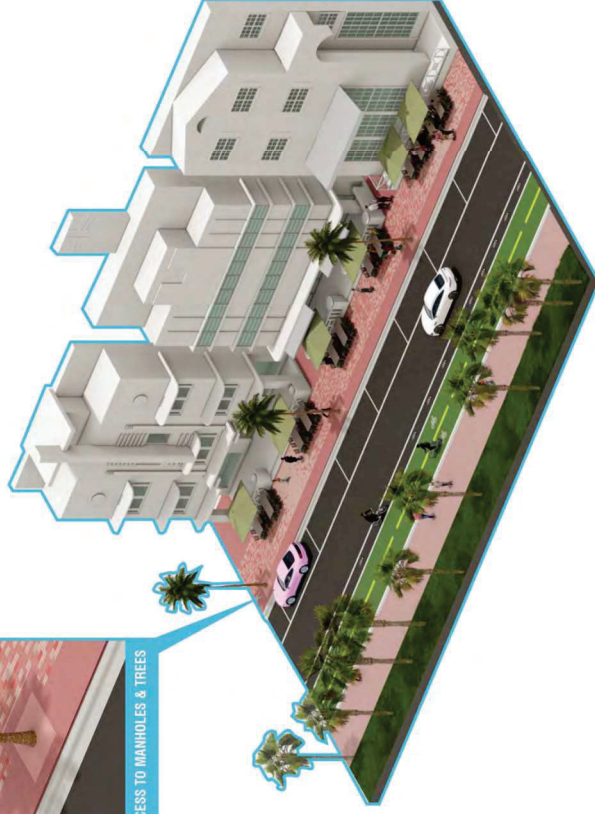
OCEAN DRIVE | LIGHTING AND SIDEWALK IMPROVEMENTS

PUBLIC MEETING
MARCH 2025

OPTION 04 SEATING
SOLDIER COURSE/ PAVERS 4"X8"



ACCESS TO MANHOLES & TREES

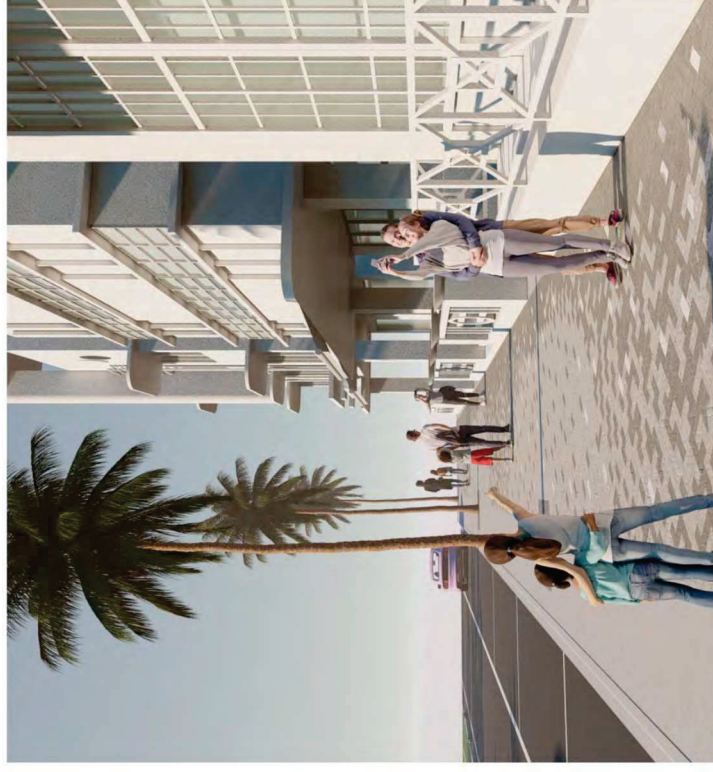


CITY OF MIAMI BEACH

OCEAN DRIVE | LIGHTING AND SIDEWALK IMPROVEMENTS

PUBLIC MEETING
MARCH 2025

OPTION 05 A
HERRINGBONE PATTERN/ PAVERS 4"X8"

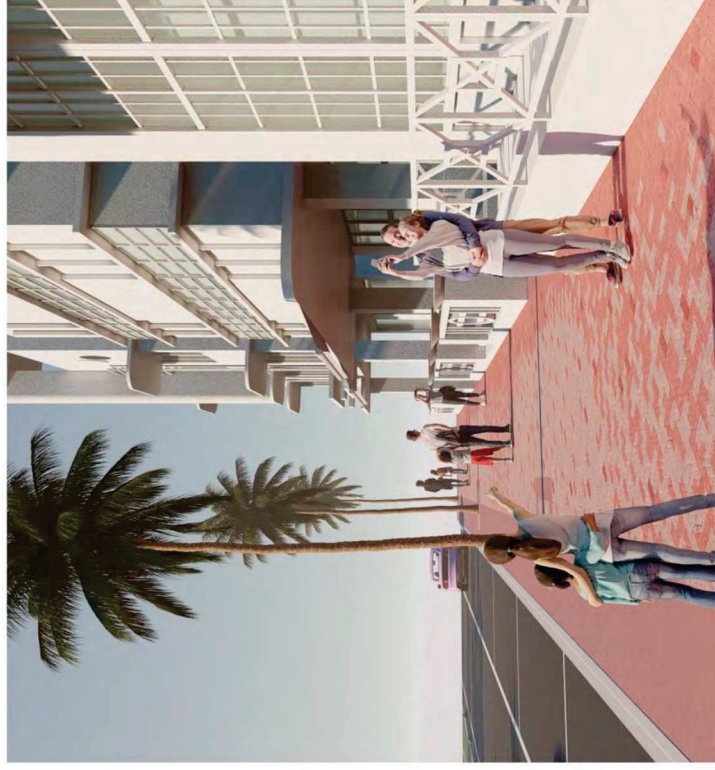
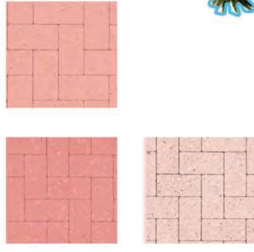


CITY OF MIAMI BEACH

OCEAN DRIVE | LIGHTING AND SIDEWALK IMPROVEMENTS

PUBLIC MEETING
MARCH 2025

OPTION 05 B
HERRINGBONE PATTERN/ PAVERS 4"X8"



CITY OF MIAMI BEACH

OCEAN DRIVE | LIGHTING AND SIDEWALK IMPROVEMENTS

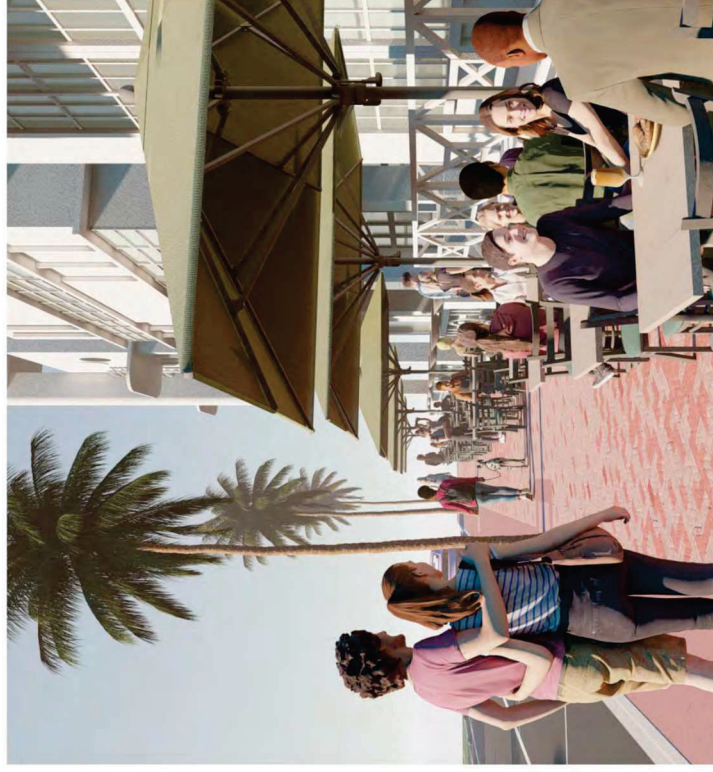
PUBLIC MEETING
MARCH 2025

OPTION 05 SEATING

HERRINGBONE PATTERN/ PAVERS 4"X8"



ACCESS TO MANHOLES & TREES



CITY OF MIAMI BEACH

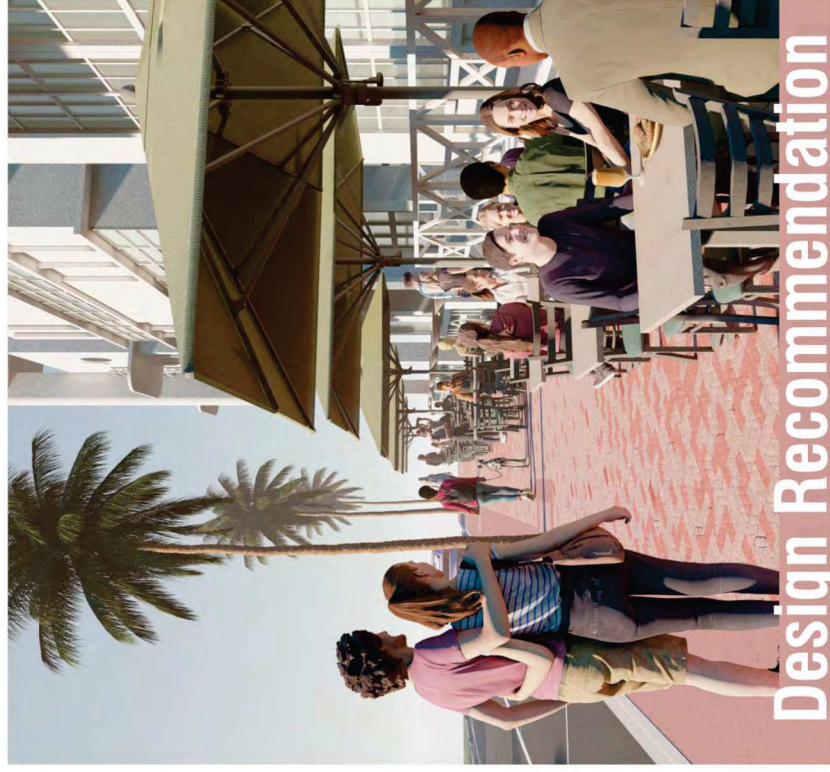
OCEAN DRIVE | LIGHTING AND SIDEWALK IMPROVEMENTS

PUBLIC MEETING
MARCH 2025

OPTION 05 SEATING
 HERRINGBONE PATTERN/ PAVERS 4"X8"



ACCESS TO MANHOLES & TREES



Design Recommendation

Discuss lighting strategy for Ocean Drive



CITY OF MIAMI BEACH

OCEAN DRIVE | LIGHTING AND SIDEWALK IMPROVEMENTS

PUBLIC MEETING
MARCH 2025

46

02MODULE

PROPOSED ALTERNATIVES

Turn

Design: FRIS & MOUTKE Design

Turn by Fris & Moutke Design is a new brand in the Focus program.

The luminaires in cast aluminium have silk-edged shades in clear glass. The housing is completed by a long ring in cast aluminium or a short, opal-white acrylic ring.

Turn is available as a spot with reflector or with optics for asymmetrical light.



Turn Spot is equipped with a long ring in cast aluminium for cut-off and anti-glare.

Turn Spot Halo is equipped with a short, opal-white acrylic ring, opening the luminaire and offering optical guidance.

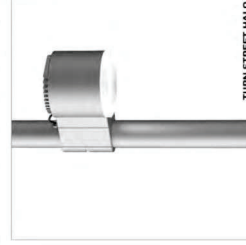
Both spots are equipped with reflector and LED optics for asymmetrical light. The angles: narrow (12°), medium (19°), and wide (36°).

The spots can be adjusted horizontally around the post and vertically in the bracket. When holes have been bored in the post, the spots can be turned 90 degrees to both sides.

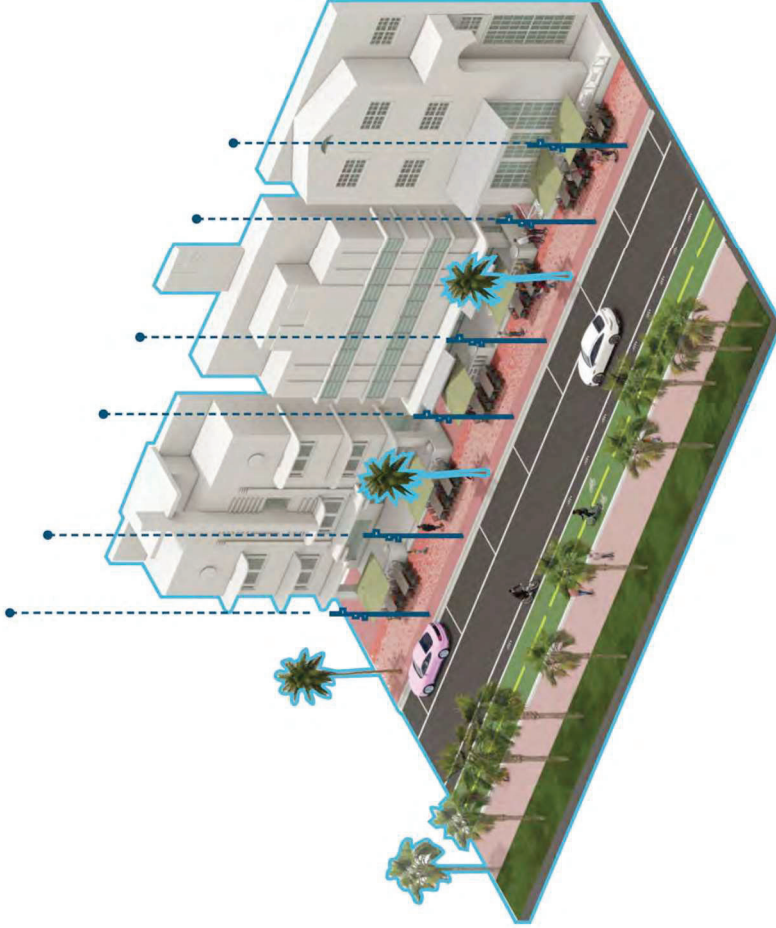


Turn Street Halo is available in one version only. The casing with the short, opal-white ring opens up for asymmetrical light onto cycling lanes and pedestrian areas.

The street luminaire will be equipped with programmed LED and lenses for asymmetrical light.



Find our sales partner in your country under Contacts at www.focus-lighting.dk



FOCUS-LIGHTING

PROPOSED ALTERNATIVES

02MODULE

47

PUBLIC MEETING
MARCH 2025

OCEAN DRIVE | LIGHTING AND SIDEWALK IMPROVEMENTS



CITY OF MIAMI BEACH



Turn

Design: FRIS & MOLTKE Design

Turn by Fris & Moltke Design is a new brand in the Focus program.

The luminaires in cast aluminium have silk-edged shades in clear glass. The housing is completed by a long ring in cast aluminium or a short, opal-white acrylic ring.

Turn is available as a spot with reflector or with optics for asymmetrical light.



TURN SPOT

Turn Spot is equipped with a long ring in cast aluminium for cut-off and anti-glare.

Turn Spot Halo is equipped with a short, opal-white acrylic ring, opening the luminaire and offering optical guidance.

Both spots are equipped with reflector and LED with light distribution in three angles: narrow (12°), medium (15°), and wide (38°).

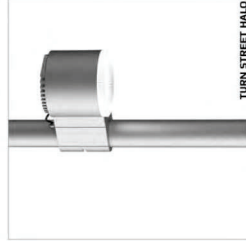
The spots can be adjusted horizontally around the post and vertically in the bracket. When holes have been bored in the post, the spots can be turned 30 degrees to both sides.



TURN SPOT HALO

Turn Street Halo is available in one version only. The luminaire is equipped with a short, opal-white acrylic ring, opening the luminaire and offering optical guidance up for asymmetrical light onto cycling lanes and pedestrian areas.

The street luminaire will be equipped with programmed LED and lenses for asymmetrical light.



TURN STREET HALO

Find our sales partner in your country under Contacts at www.focus-lighting.dk

PROPOSED ALTERNATIVES

02MODULE

48

FOCUS-LIGHTING

PUBLIC MEETING
MARCH 2025

OCEAN DRIVE | LIGHTING AND SIDEWALK IMPROVEMENTS



CITY OF MIAMI BEACH



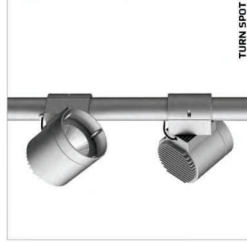
Turn

Design: FRIS & MOLTKE Design

Turn by Fris & Moltke Design is a new brand in the Focus program.

The luminaires in cast aluminium have silk-edged shades in clear glass. The housing is completed by a long ring in cast aluminium or a short, opal-white acrylic ring.

Turn is available as a spot with reflector or with optics for asymmetrical light.



Turn Spot is equipped with a long ring in cast aluminium for cut-off and anti-glare.

Turn Spot Halo is equipped with a short, opal-white acrylic ring, opening the luminaire and offering optical guidance.

Both spots are equipped with reflector and LED optics. The reflector has three angles: narrow (12°), medium (19°), and wide (36°).

The spots can be adjusted horizontally around the post and vertically in the bracket. When holes have been bored in the post, the spots can be turned 90 degrees to both sides.



Turn Street Halo is available in one version only. The casing with the short, opal-white ring opens up for asymmetrical light into cycling lanes and pedestrian areas.

The street luminaire will be equipped with programmed LED and lenses for asymmetrical light.

Find our sales partner in your country under Contacts at www.focus-lighting.dk



CITY OF MIAMI BEACH

OCEAN DRIVE | LIGHTING AND SIDEWALK IMPROVEMENTS

PUBLIC MEETING
MARCH 2025

49

02MODULE

PROPOSED ALTERNATIVES

FOCUS-LIGHTING



Recommended Fixture



CITY OF MIAMI BEACH

OCEAN DRIVE | LIGHTING AND SIDEWALK IMPROVEMENTS

PUBLIC MEETING
MARCH 2025

50

02MODULE

PROPOSED ALTERNATIVES



CITY OF MIAMI BEACH

OCEAN DRIVE | LIGHTING AND SIDEWALK IMPROVEMENTS

PUBLIC MEETING
MARCH 2025

51

02MODULE

PROPOSED ALTERNATIVES



LIGHT FIXTURES ALLOW FOR THE
INCORPORATION OF TURTLE-FRIENDLY
AMBER LIGHTING AND DIRECTIONAL
SHIELDS



CITY OF MIAMI BEACH

OCEAN DRIVE | LIGHTING AND SIDEWALK IMPROVEMENTS

PUBLIC MEETING
MARCH 2025



CITY OF MIAMI BEACH

OCEAN DRIVE | LIGHTING AND SIDEWALK IMPROVEMENTS

PUBLIC MEETING
MARCH 2025

53

02MODULE

PROPOSED ALTERNATIVES





CITY OF MIAMI BEACH

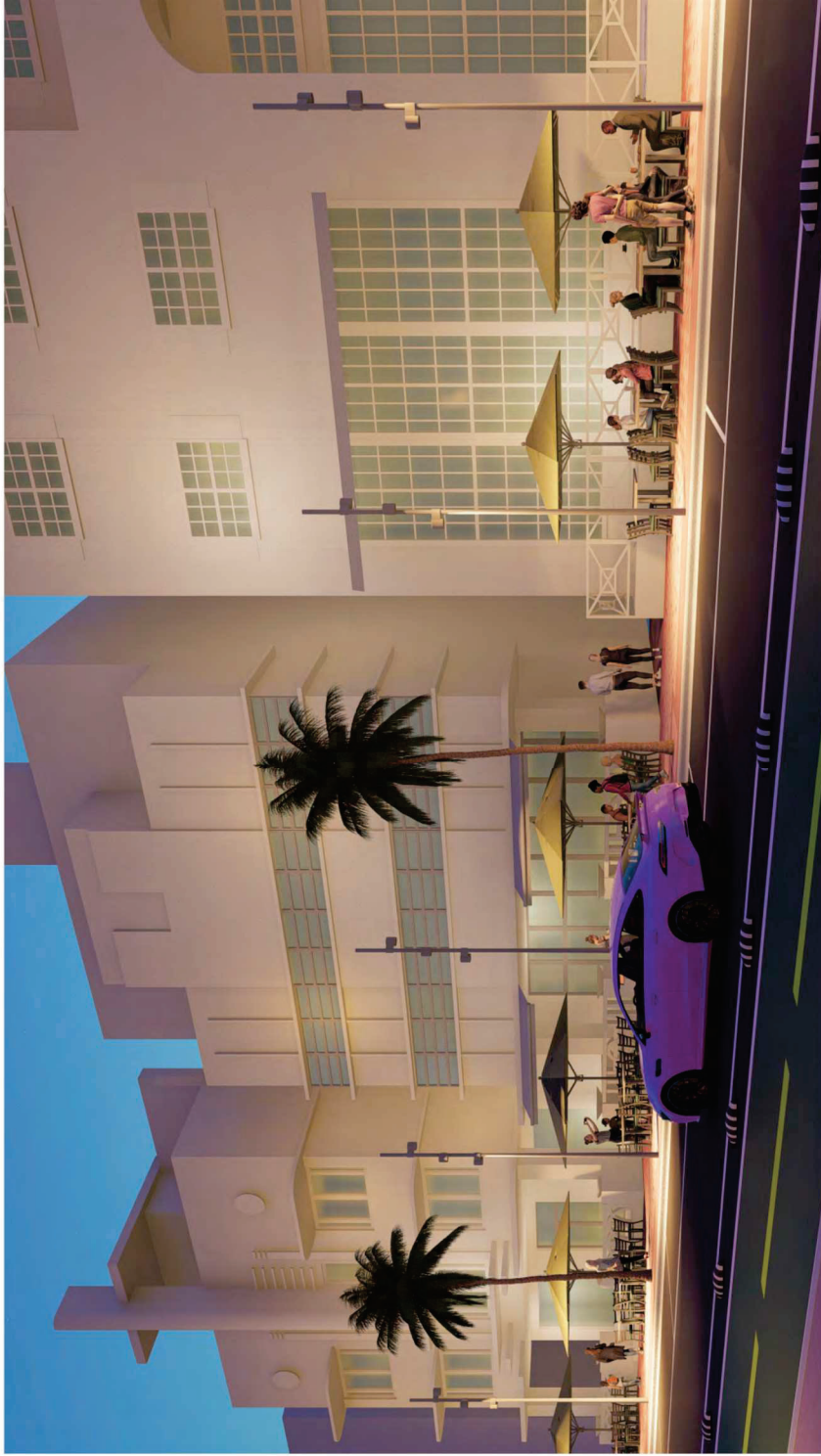
OCEAN DRIVE | LIGHTING AND SIDEWALK IMPROVEMENTS

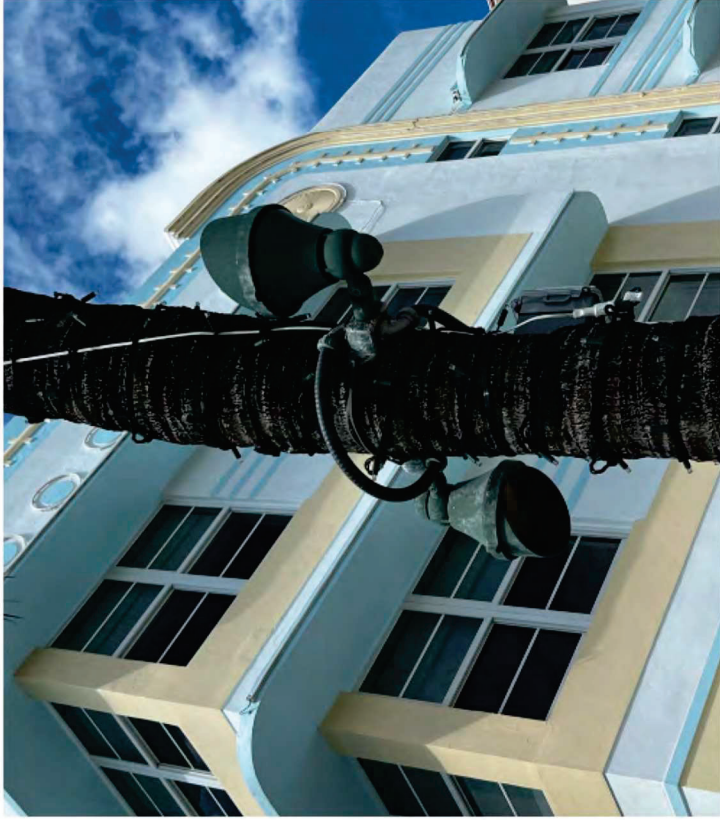
PUBLIC MEETING
MARCH 2025

54

02MODULE

PROPOSED ALTERNATIVES





Design Recommendation



CITY OF MIAMI BEACH

OCEAN DRIVE | LIGHTING AND SIDEWALK IMPROVEMENTS

PUBLIC MEETING
MARCH 2025

55

02MODULE

PROPOSED ALTERNATIVES

Summary of Recommendations

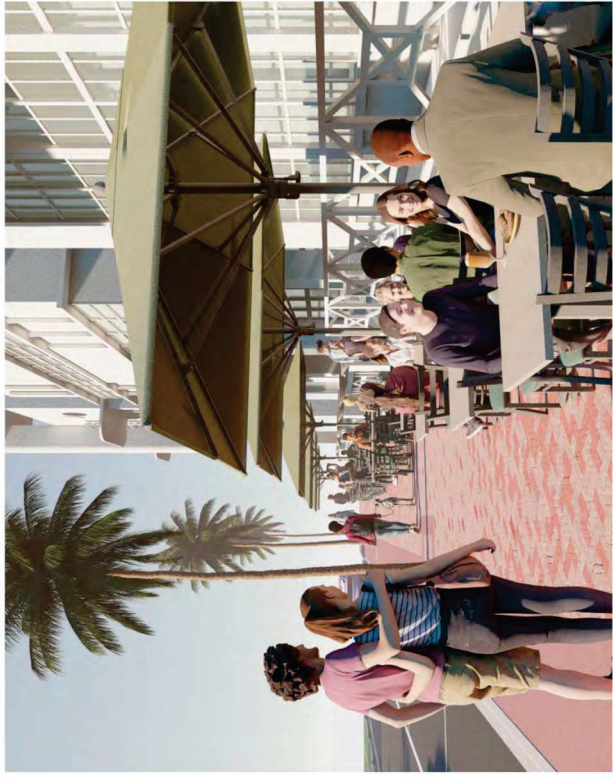
03



CITY OF MIAMI BEACH

OCEAN DRIVE | LIGHTING AND SIDEWALK IMPROVEMENTS

PUBLIC MEETING
MARCH 2025



Design Recommendations



CITY OF MIAMI BEACH

OCEAN DRIVE | LIGHTING AND SIDEWALK IMPROVEMENTS

PUBLIC MEETING
MARCH 2025