

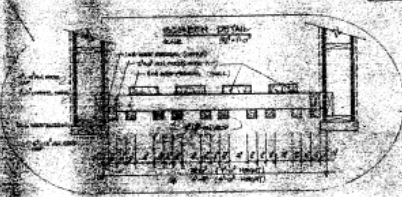
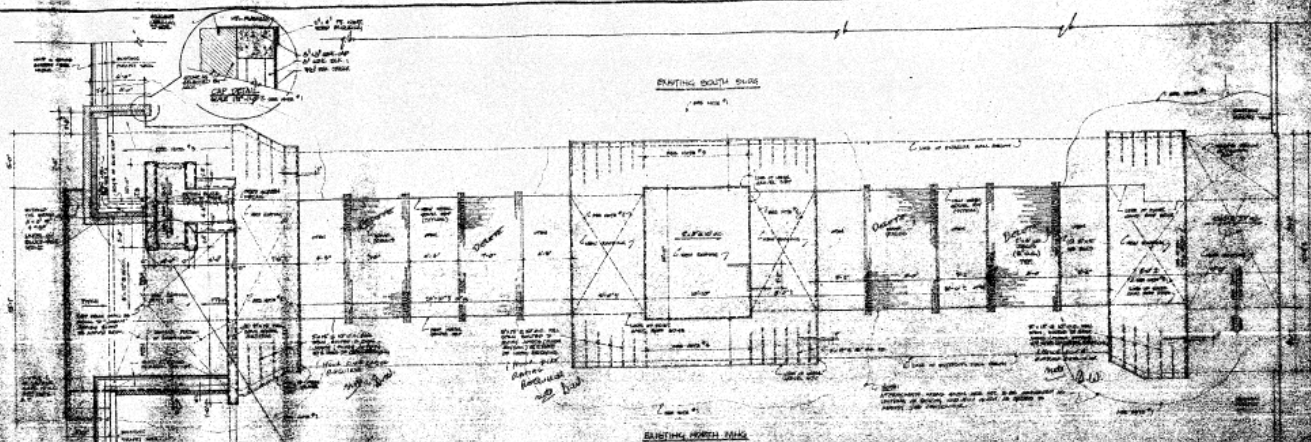
ROOM SCHEDULE				
NO.	ROOM	AREA	FINISH	REMARKS
1	REAR OFFICE	100.00	CONCRETE	SEE PT.
2	REAR OFFICE	100.00	CONCRETE	SEE PT.
3	REAR OFFICE	100.00	CONCRETE	SEE PT.
4	REAR OFFICE	100.00	CONCRETE	SEE PT.
5	REAR OFFICE	100.00	CONCRETE	SEE PT.
6	REAR OFFICE	100.00	CONCRETE	SEE PT.
7	REAR OFFICE	100.00	CONCRETE	SEE PT.
8	REAR OFFICE	100.00	CONCRETE	SEE PT.
9	REAR OFFICE	100.00	CONCRETE	SEE PT.
10	REAR OFFICE	100.00	CONCRETE	SEE PT.

ROOM FINISH SCHEDULE				
ROOM NO.	FINISH	DATE	BY	REMARKS
1	CONCRETE	10/1/57	J. H. HARRIS	SEE PT.
2	CONCRETE	10/1/57	J. H. HARRIS	SEE PT.
3	CONCRETE	10/1/57	J. H. HARRIS	SEE PT.
4	CONCRETE	10/1/57	J. H. HARRIS	SEE PT.
5	CONCRETE	10/1/57	J. H. HARRIS	SEE PT.
6	CONCRETE	10/1/57	J. H. HARRIS	SEE PT.
7	CONCRETE	10/1/57	J. H. HARRIS	SEE PT.
8	CONCRETE	10/1/57	J. H. HARRIS	SEE PT.
9	CONCRETE	10/1/57	J. H. HARRIS	SEE PT.
10	CONCRETE	10/1/57	J. H. HARRIS	SEE PT.

RECEIVED
NOV 1957

OFFICE COPY

SECOND FLOOR PLAN
SCALE: 1/4" = 1'-0"



- NOTES**
1. GENERAL: BUILDING OF STEEL, CONCRETE, AND BRICK. TO BE DESIGNED AND CONSTRUCTED IN ACCORDANCE WITH THE LATEST EDITIONS OF THE AIA, AIAA, AND AIAA. ALL MATERIALS TO BE USED SHALL BE OF THE BEST QUALITY AND SHALL BE SUBJECT TO INSPECTION AND APPROVAL BY THE ARCHITECT.
 2. FOUNDATION: SHALL BE DESIGNED AND CONSTRUCTED IN ACCORDANCE WITH THE LATEST EDITIONS OF THE AIA, AIAA, AND AIAA. ALL MATERIALS TO BE USED SHALL BE OF THE BEST QUALITY AND SHALL BE SUBJECT TO INSPECTION AND APPROVAL BY THE ARCHITECT.
 3. ROOFING: SHALL BE DESIGNED AND CONSTRUCTED IN ACCORDANCE WITH THE LATEST EDITIONS OF THE AIA, AIAA, AND AIAA. ALL MATERIALS TO BE USED SHALL BE OF THE BEST QUALITY AND SHALL BE SUBJECT TO INSPECTION AND APPROVAL BY THE ARCHITECT.
 4. INTERIORS: SHALL BE DESIGNED AND CONSTRUCTED IN ACCORDANCE WITH THE LATEST EDITIONS OF THE AIA, AIAA, AND AIAA. ALL MATERIALS TO BE USED SHALL BE OF THE BEST QUALITY AND SHALL BE SUBJECT TO INSPECTION AND APPROVAL BY THE ARCHITECT.

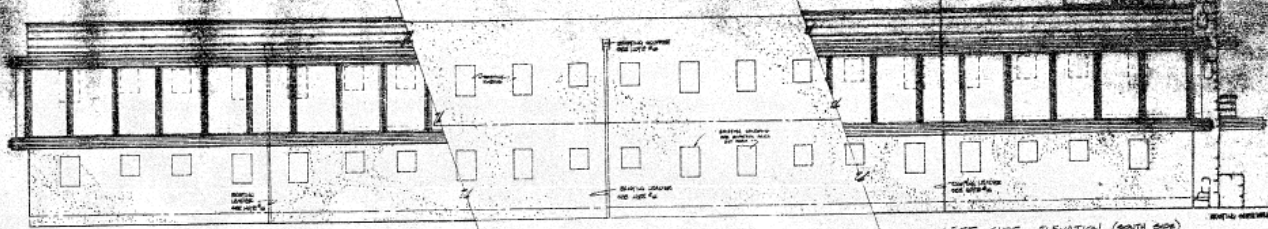
OFFICE COPY

APPROVED

DATE

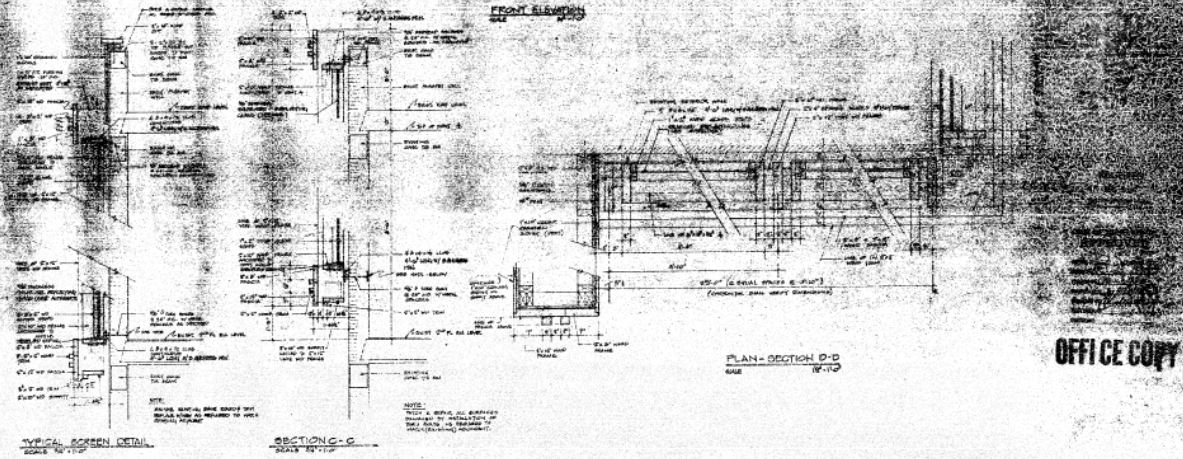
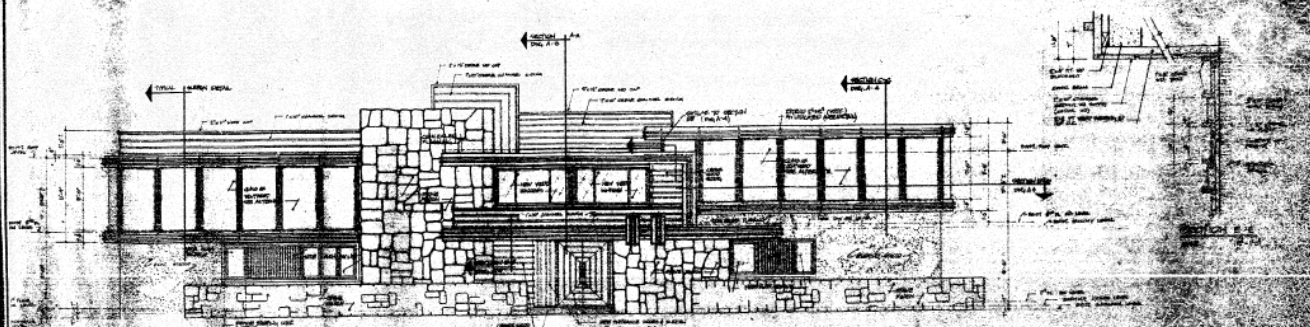
BY

FOR

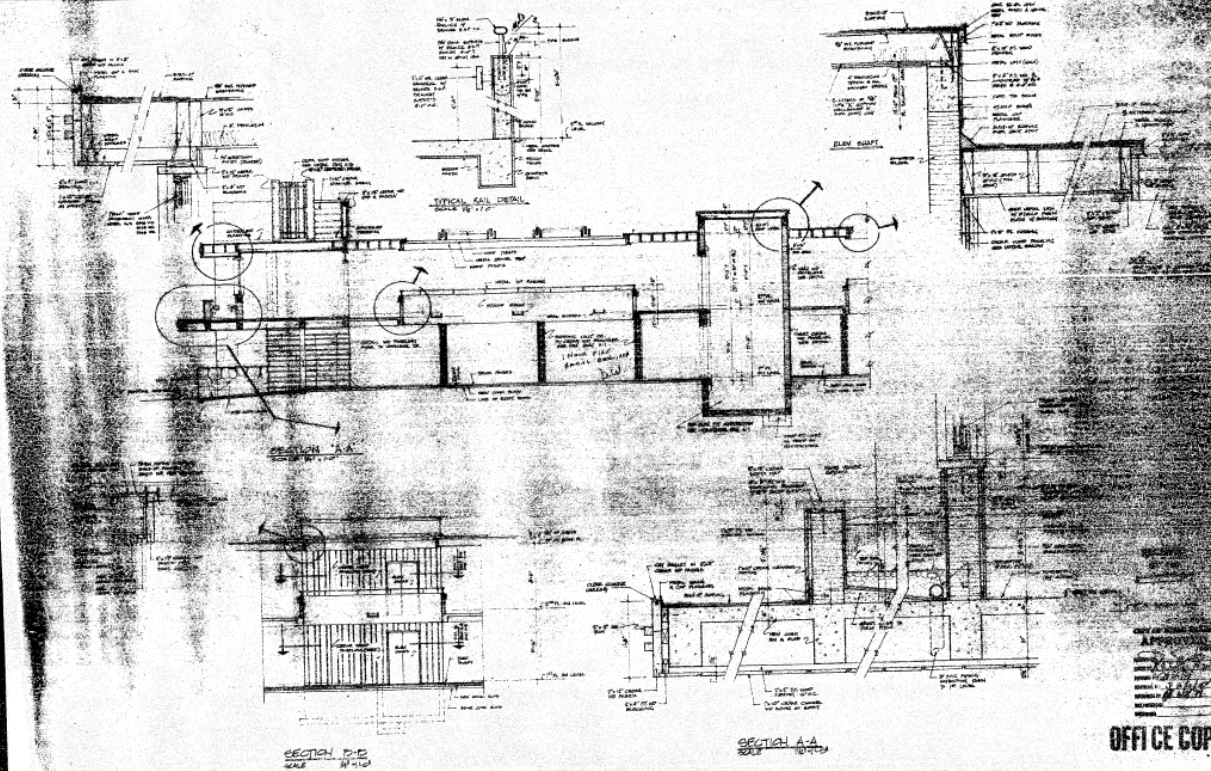


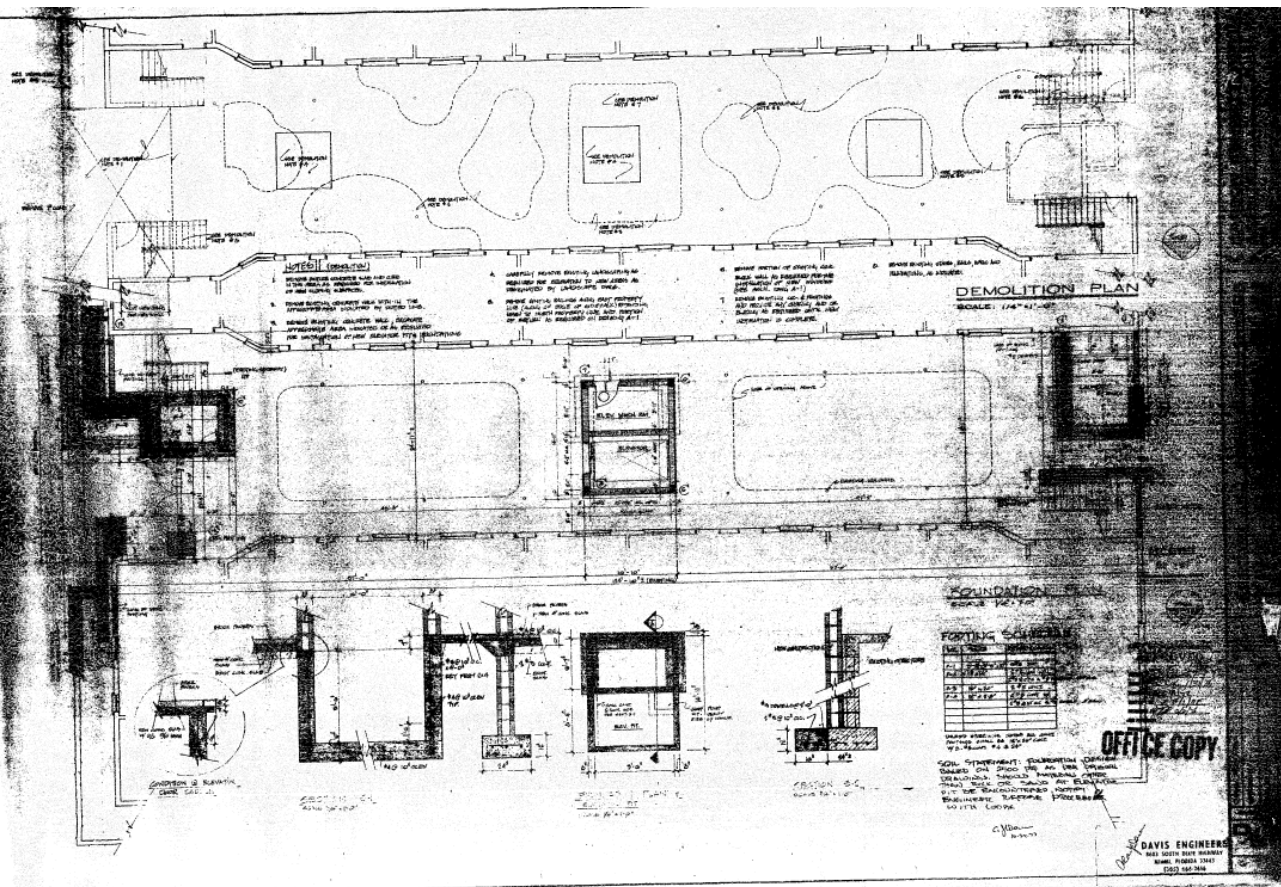
LEFT SIDE ELEVATION (SOUTH SIDE)

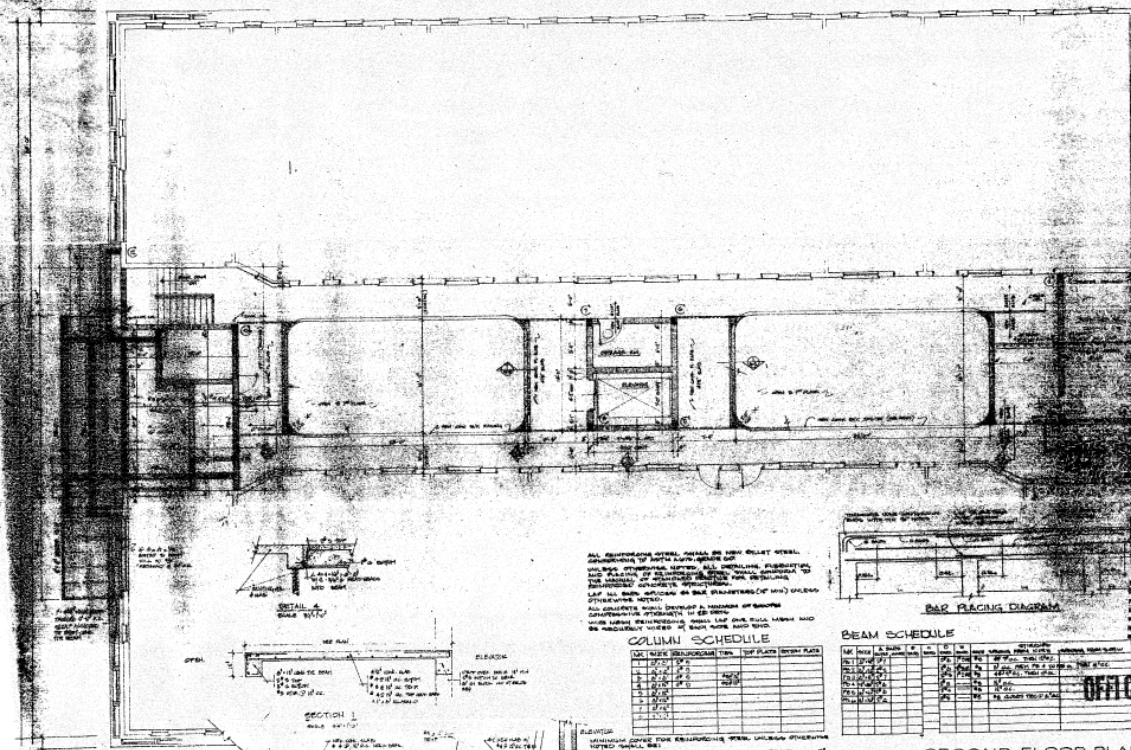
SCALE 1/4" = 1'-0"



OFFICE COPY







ALL REINFORCING STEEL SHALL BE HOT ROLL STEEL.
 CONCRETE SHALL BE 3000 PSI STRENGTH.
 ALL WALLS, PARTITIONS, CEILING, FLOORING, ELEVATION,
 AND FINISHES SHALL BE AS SHOWN ON THE DRAWING.
 THE FINISHES OF THE INTERIOR SHALL BE AS SHOWN ON THE DRAWING.
 THE FINISHES OF THE EXTERIOR SHALL BE AS SHOWN ON THE DRAWING.
 ALL CONCRETE SHALL BE PLACED IN A MANNER AS TO BE
 PROTECTED FROM WEATHER AND FROST.
 ALL REINFORCING STEEL SHALL BE PLACED IN A MANNER AS TO BE
 PROTECTED FROM WEATHER AND FROST.

COLUMN SCHEDULE

NO.	TYPE	SIZE	LOCATION
1	CONCRETE	12" x 12"	AT CORNER
2	CONCRETE	12" x 12"	AT CORNER
3	CONCRETE	12" x 12"	AT CORNER
4	CONCRETE	12" x 12"	AT CORNER
5	CONCRETE	12" x 12"	AT CORNER
6	CONCRETE	12" x 12"	AT CORNER
7	CONCRETE	12" x 12"	AT CORNER
8	CONCRETE	12" x 12"	AT CORNER
9	CONCRETE	12" x 12"	AT CORNER
10	CONCRETE	12" x 12"	AT CORNER

MINIMUM COVER FOR REINFORCING STEEL, UNLESS OTHERWISE
 NOTED, SHALL BE:
 A. CONCRETE EXPOSED AGAINST THE GROUND..... 4"
 B. WALLS EXPOSED TO THE WEATHER OR IN CONTACT WITH
 THE GROUND..... 3"
 C. WALLS NOT EXPOSED TO THE WEATHER OR IN CONTACT
 WITH THE GROUND..... 2"
 D. SLABS (OVER TRUSS REINFORCING)..... 1 1/2"
 E. SLABS ON GROUND..... 1 1/2"
 F. COLUMNS..... 1 1/2"
 G. STRUCTURAL STEEL..... 1 1/2"

BAR PLACING DIAGRAM

ALL REINFORCING STEEL SHALL BE HOT ROLL STEEL.
 CONCRETE SHALL BE 3000 PSI STRENGTH.
 ALL WALLS, PARTITIONS, CEILING, FLOORING, ELEVATION,
 AND FINISHES SHALL BE AS SHOWN ON THE DRAWING.
 THE FINISHES OF THE INTERIOR SHALL BE AS SHOWN ON THE DRAWING.
 THE FINISHES OF THE EXTERIOR SHALL BE AS SHOWN ON THE DRAWING.

BEAM SCHEDULE

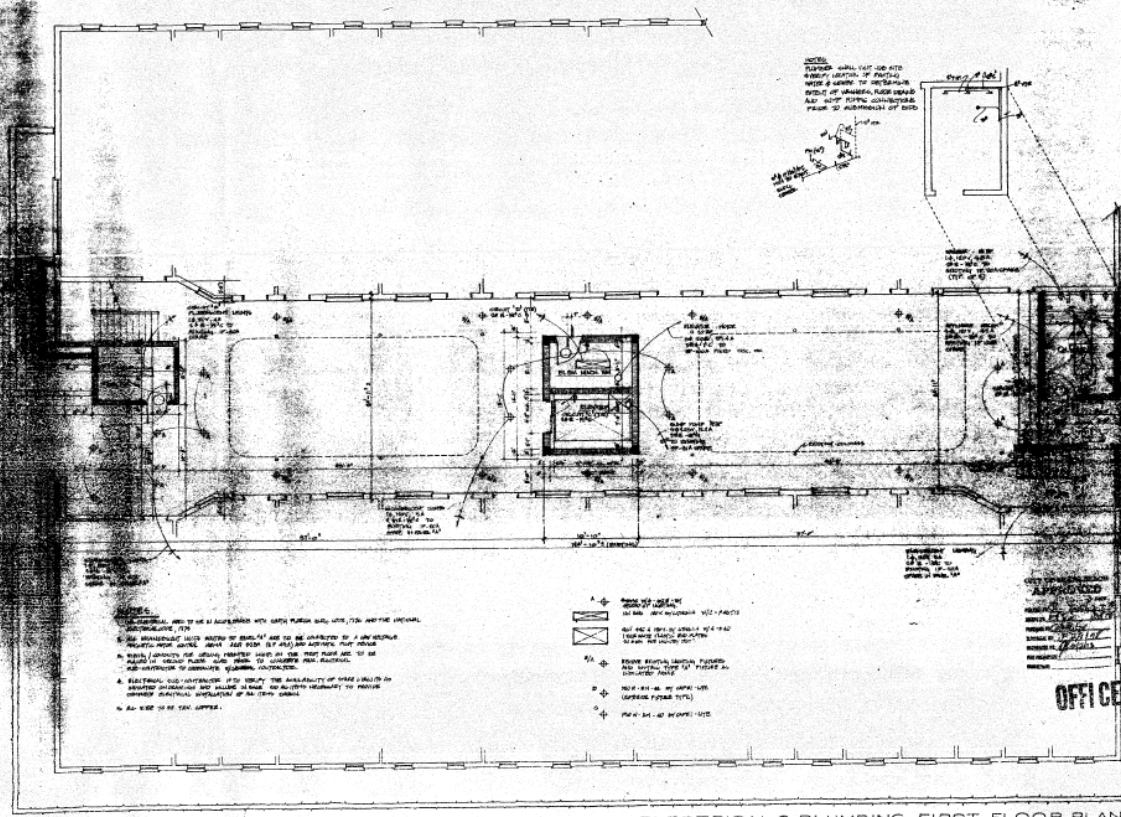
NO.	TYPE	SIZE	LOCATION
1	CONCRETE	12" x 12"	AT CORNER
2	CONCRETE	12" x 12"	AT CORNER
3	CONCRETE	12" x 12"	AT CORNER
4	CONCRETE	12" x 12"	AT CORNER
5	CONCRETE	12" x 12"	AT CORNER
6	CONCRETE	12" x 12"	AT CORNER
7	CONCRETE	12" x 12"	AT CORNER
8	CONCRETE	12" x 12"	AT CORNER
9	CONCRETE	12" x 12"	AT CORNER
10	CONCRETE	12" x 12"	AT CORNER

SECOND FLOOR PLAN

SCALE: 1/4" = 1'-0"

OFFICE COPY

DAVIS ENGINEERS
 1401 TOWN SQUARE
 SUITE 1000
 ST. LOUIS, MISSOURI 63103



GENERAL AND TO BE IN ACCORDANCE WITH LOCAL PLUMBING CODE, THE NATIONAL ELECTRICAL CODE, AND THE NATIONAL MECHANICAL CODE.

ALL MECHANICAL AND ELECTRICAL WORK TO BE INSTALLED BY A LICENSED MECHANICAL CONTRACTOR AND ALL ELECTRICAL WORK BY A LICENSED ELECTRICAL CONTRACTOR.

ALL MECHANICAL AND ELECTRICAL WORK TO BE INSTALLED IN ACCORDANCE WITH THE LATEST EDITIONS OF THE NATIONAL MECHANICAL CODE AND THE NATIONAL ELECTRICAL CODE.

ALL MECHANICAL AND ELECTRICAL WORK TO BE INSTALLED IN ACCORDANCE WITH THE LATEST EDITIONS OF THE NATIONAL MECHANICAL CODE AND THE NATIONAL ELECTRICAL CODE.

- 1. ALL MECHANICAL AND ELECTRICAL WORK TO BE INSTALLED BY A LICENSED MECHANICAL CONTRACTOR AND ALL ELECTRICAL WORK BY A LICENSED ELECTRICAL CONTRACTOR.
- 2. ALL MECHANICAL AND ELECTRICAL WORK TO BE INSTALLED IN ACCORDANCE WITH THE LATEST EDITIONS OF THE NATIONAL MECHANICAL CODE AND THE NATIONAL ELECTRICAL CODE.
- 3. ALL MECHANICAL AND ELECTRICAL WORK TO BE INSTALLED IN ACCORDANCE WITH THE LATEST EDITIONS OF THE NATIONAL MECHANICAL CODE AND THE NATIONAL ELECTRICAL CODE.
- 4. ALL MECHANICAL AND ELECTRICAL WORK TO BE INSTALLED IN ACCORDANCE WITH THE LATEST EDITIONS OF THE NATIONAL MECHANICAL CODE AND THE NATIONAL ELECTRICAL CODE.
- 5. ALL MECHANICAL AND ELECTRICAL WORK TO BE INSTALLED IN ACCORDANCE WITH THE LATEST EDITIONS OF THE NATIONAL MECHANICAL CODE AND THE NATIONAL ELECTRICAL CODE.

APPROVED

DATE: 10/1/50

BY: [Signature]

FOR: [Signature]

OFFICE COPY

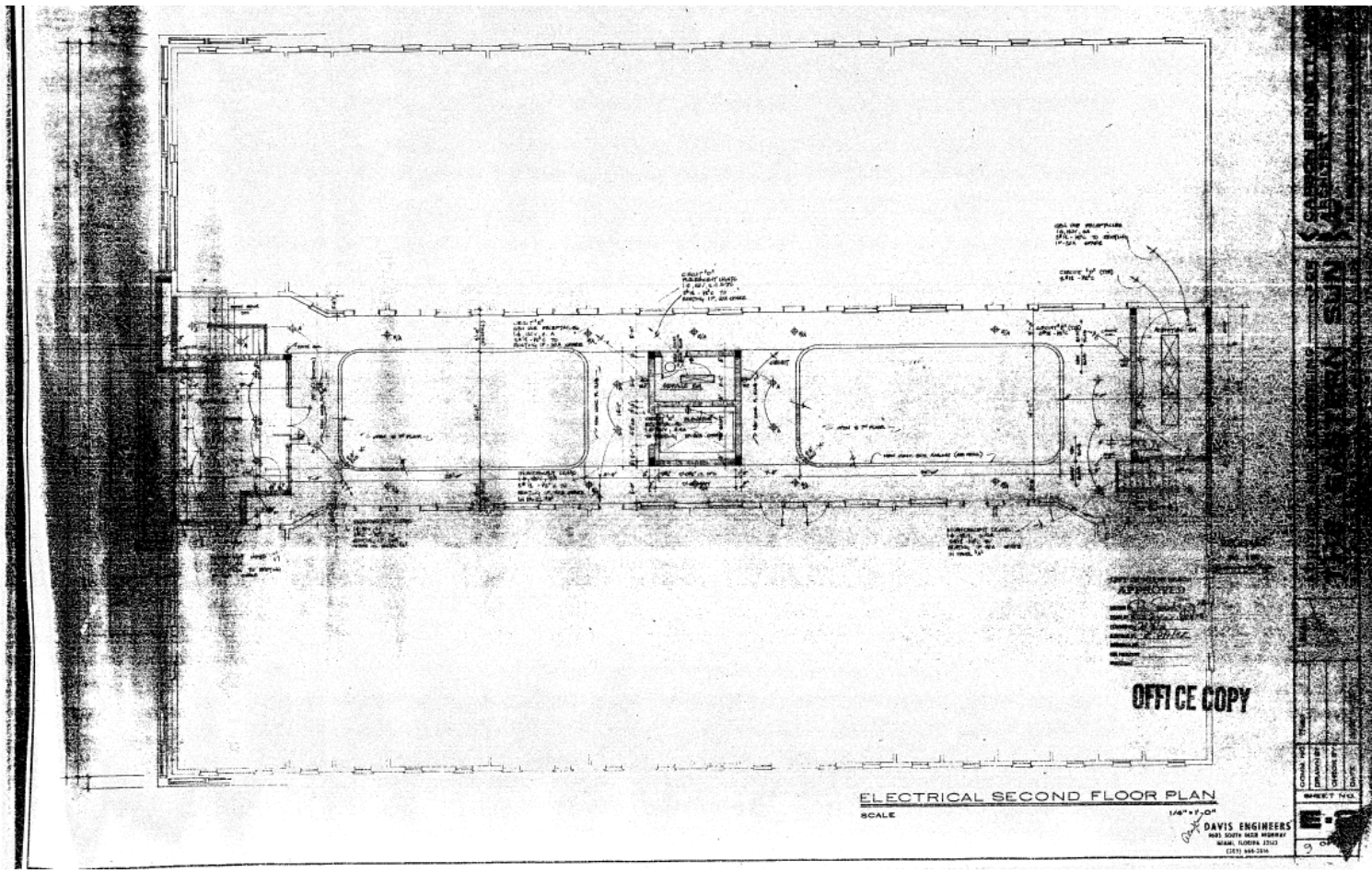
ELECTRICAL & PLUMBING FIRST FLOOR PLAN

SCALE 1/4" = 1'-0"

DAVIS ENGINEERS

200 SOUTH BAY STREET

MIAMI, FLORIDA 33134



OFFICE COPY

ELECTRICAL SECOND FLOOR PLAN
SCALE

1/8" = 1'-0"
DAVIS ENGINEERS
3001 SOUTH MIAMI AVENUE
MIAMI, FLORIDA 33133
(305) 844-2816

REVISIONS

NO.	DATE	DESCRIPTION
1		
2		
3		
4		
5		
6		
7		
8		
9		
10		

PROJECT NO. 100-1000000
SHEET NO. 100-1000000-100

APPROVED

DATE 10/1/80
BY [Signature]
CHECKED BY [Signature]
DESIGNED BY [Signature]
DRAWN BY [Signature]
IN CHARGE [Signature]

47162

FEDERAL BUREAU OF INVESTIGATION - BUILDING DIVISION

DATE: March 22, 1937

TO: PUBLIC WORKS DEPARTMENT - ENGINEERING DIVISION

LOCAL DESCRIPTION: 1000 S.W. 2nd St., Miami, Fla., Building

LOCAL ADDRESS: 1000 S.W. 2nd St., Miami, Fla.

TYPE OF BUILDING: Addition

A plan for this building has been submitted to this Division. Please list the modifications and return to Building Division.

CONVICT FACILITIES: In New Building Division

PROPERTY OWNER: J. H. Baker

STATE: Fla.

COUNTY OF FLORIDA: Dade

CITY OF MIAMI: Miami

ENGINEER: J. H. Baker

REMARKS: Public Works Department (Division) required the work done on this property. Compliance measures of elements and code and return to be submitted and modified when necessary.

ALL THE WORKMAN SUBJECT TO THESE CONDITIONS.

Building Division: J. H. Baker

DATE: Jan 1, 1938

FEDERAL BUREAU OF INVESTIGATION - BUILDING DIVISION

DATE: March 22, 1937

TO: PUBLIC WORKS DEPARTMENT - ENGINEERING DIVISION

LOCAL DESCRIPTION: 1000 S.W. 2nd St., Miami, Fla., Building

LOCAL ADDRESS: 1000 S.W. 2nd St., Miami, Fla.

TYPE OF BUILDING: Addition

A plan for this building has been submitted to this Division. Please list the modifications and return to Building Division.

CONVICT FACILITIES: In New Building Division

PROPERTY OWNER: J. H. Baker

STATE: Fla.

COUNTY OF FLORIDA: Dade

CITY OF MIAMI: Miami

ENGINEER: J. H. Baker

REMARKS: Public Works Department (Division) required the work done on this property. Compliance measures of elements and code and return to be submitted and modified when necessary.

ALL THE WORKMAN SUBJECT TO THESE CONDITIONS.

Building Division: J. H. Baker

DATE: December 10, 1937

FEDERAL BUREAU OF INVESTIGATION - BUILDING DIVISION

DATE: March 22, 1937

TO: PUBLIC WORKS DEPARTMENT - ENGINEERING DIVISION

LOCAL DESCRIPTION: 1000 S.W. 2nd St., Miami, Fla., Building

LOCAL ADDRESS: 1000 S.W. 2nd St., Miami, Fla.

TYPE OF BUILDING: Addition

A plan for this building has been submitted to this Division. Please list the modifications and return to Building Division.

CONVICT FACILITIES: In New Building Division

PROPERTY OWNER: J. H. Baker

STATE: Fla.

COUNTY OF FLORIDA: Dade

CITY OF MIAMI: Miami

ENGINEER: J. H. Baker

REMARKS: Public Works Department (Division) required the work done on this property. Compliance measures of elements and code and return to be submitted and modified when necessary.

ALL THE WORKMAN SUBJECT TO THESE CONDITIONS.

Building Division: J. H. Baker

