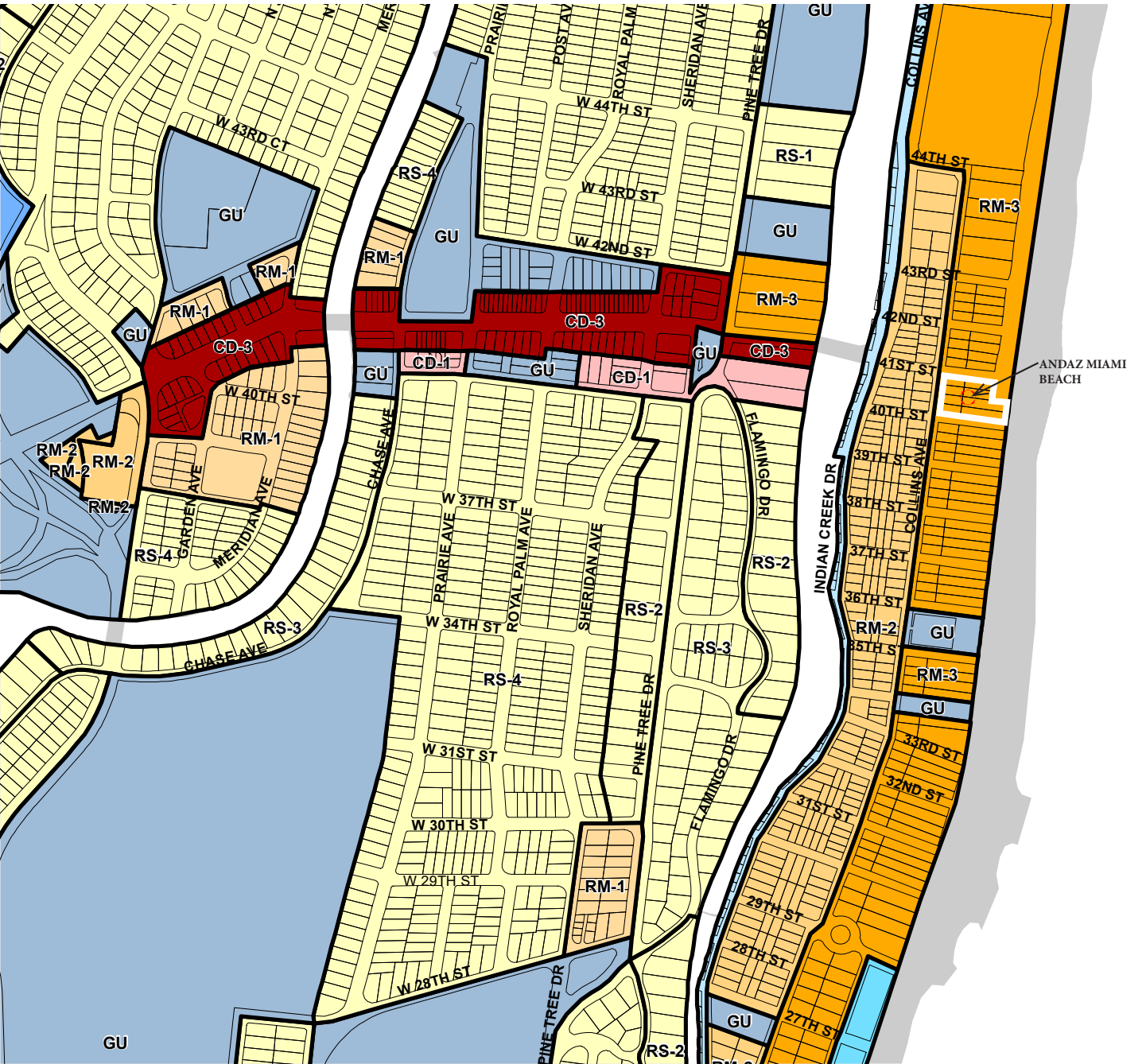
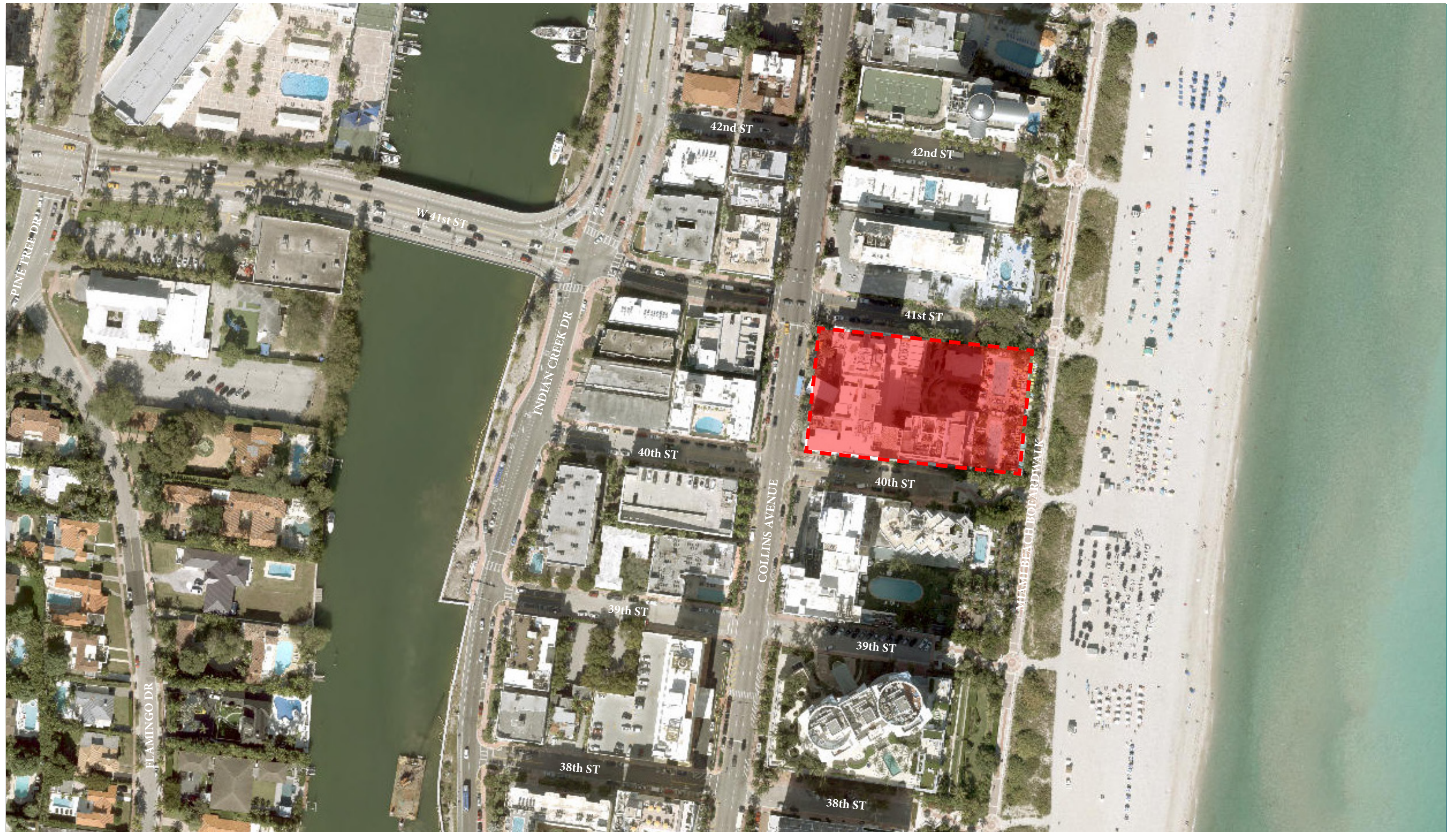


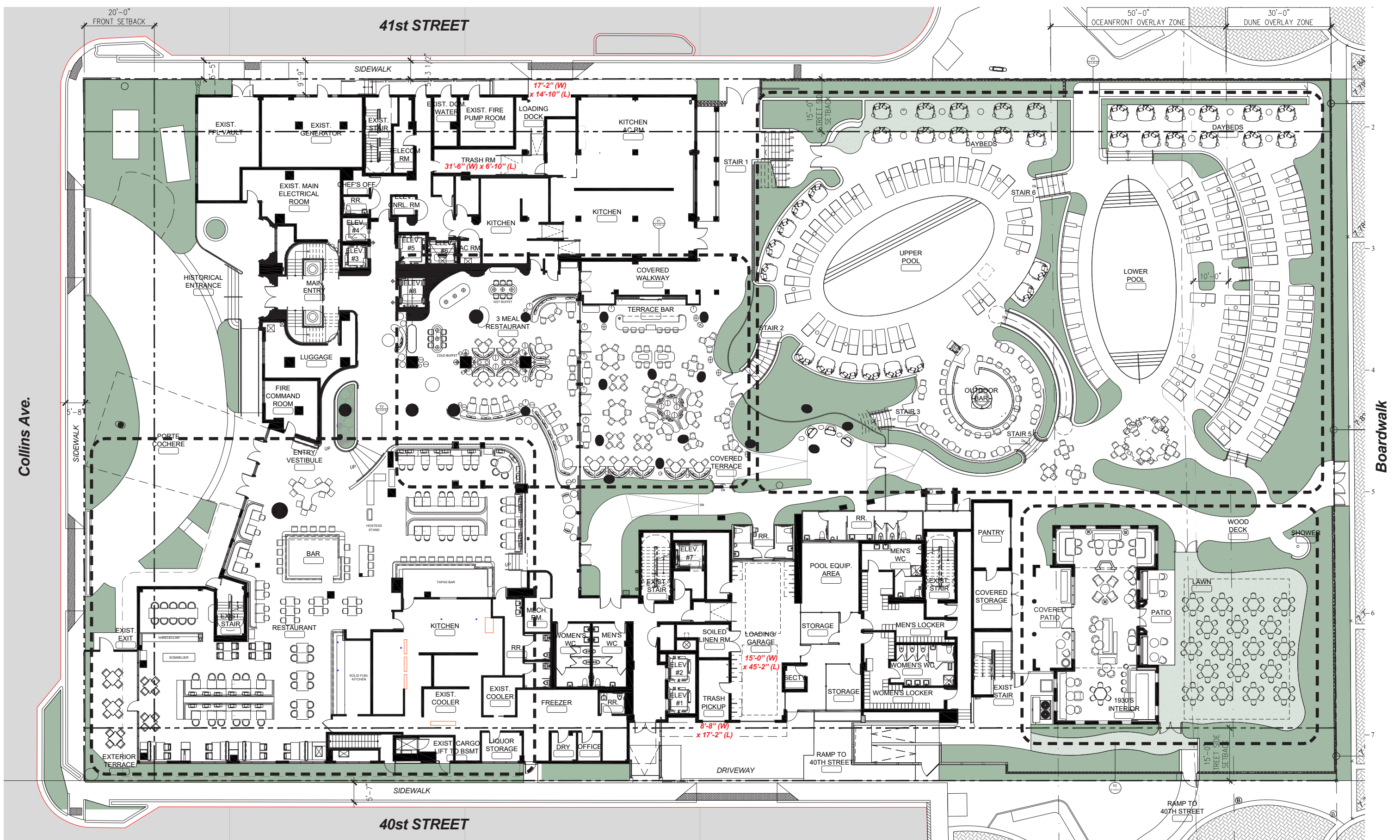
HISTORIC DISTRICT MAP



ZONING MAP







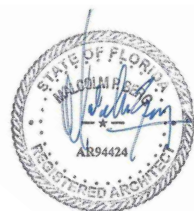
Collins Ave.

Boardwalk

ANDAZ, MIAMI BEACH
4041 COLLINS AVE., MIAMI BEACH, FL 33140
CONDITIONAL USE PERMIT

OVERALL PLAN
2ND FLOOR

sheet no.
A-1.03
OVERALL PLAN 2ND FLOOR
SCALE: AS NOTED



E o A , I n c | 1929 Ponce de Leon Blvd., Coral Gables, Florida 33146 | 3 0 5 . 4 4 4 . 0 9 9 0 | State of Florida Architect of Record Malcolm Berg, AIA License No. AR94424