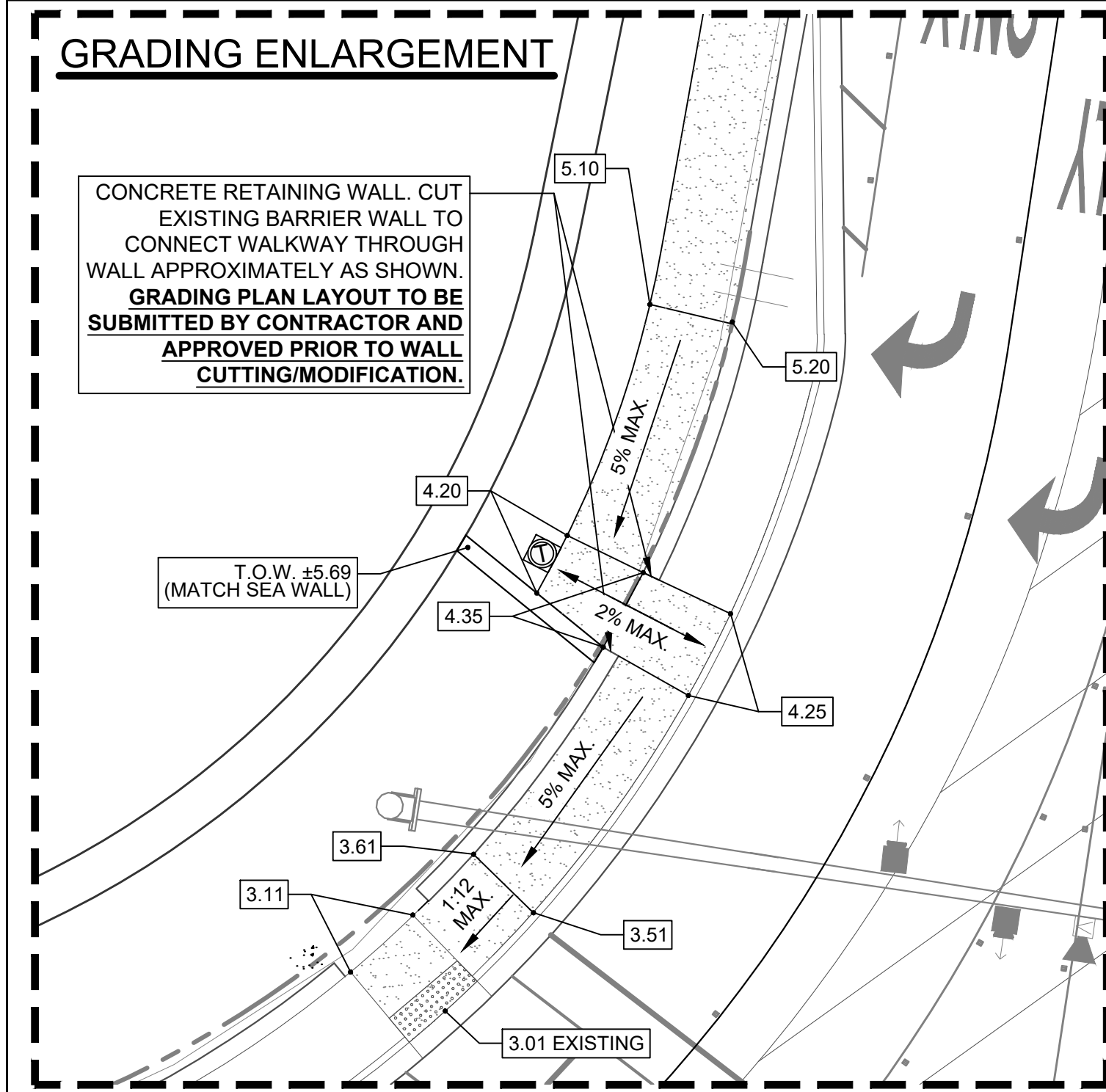
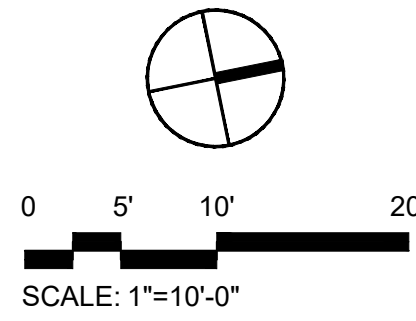


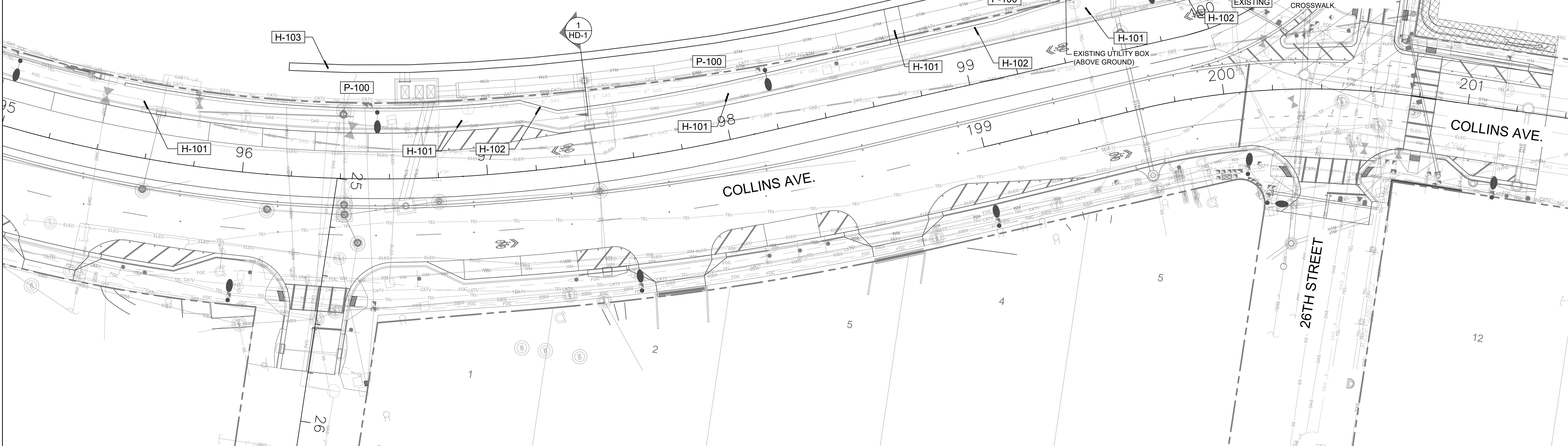
R:\Vandscape\2018\18-0043-001-01 indian\_creek\_greenway\Drawings\18-0043-001-01\_HP.dwg [HP-1] Sep 01, 2023 4:31pm NPASTRE

## GRADING ENLARGEMENT

CONCRETE RETAINING WALL, CUT EXISTING BARRIER WALL TO CONNECT WALKWAY THROUGH WALL APPROXIMATELY AS SHOWN. GRADING PLAN LAYOUT TO BE SUBMITTED BY CONTRACTOR AND APPROVED PRIOR TO WALL CUTTING/MODIFICATION.



LAKE PANCOAST



## REFERENCE NOTES SCHEDULE

Site Furnishings			
SYMBOL	DESCRIPTION	QTY	Detail
[F-101]	Recycling Receptacle	1	1/HD-2
[F-102]	Trash Receptacle	2	1/HD-2
[F-103]	Round Concrete Bench	10	3/HD-1
[F-104]	Bollard Light	126	3/HD-2
Hardscape			
SYMBOL	DESCRIPTION	QTY	Detail
[H-100]	Concrete Path	11,918 sf	1/HD-1
[H-101]	Concrete Sidewalk	N/A	Existing
[H-102]	Barrier Wall	N/A	Existing
[H-103]	Sea Wall	N/A	See Engineer Plans
[H-104]	Concrete Pad for Bench & Receptacle	13	4/HD-1
Planter Area			
SYMBOL	DESCRIPTION	QTY	Detail
[P-100]	Planter Area	N/A	See Landscape Plan

- NOTES:
- PATH MUST BE IN CONFORMANCE WITH MOST CURRENT AMERICAN WITH DISABILITIES ACT STANDARDS AND REGULATIONS FOR ACCESSIBLE DESIGN. PATH SHALL NOT EXCEED 5% RUNNING SLOPE OR 2% CROSS-SLOPE AT ANY TIME.
  - CONTRACTOR MUST FIELD VERIFY EXISTING AND PROPOSED CONDITIONS AND SUBMIT GRADING PLAN LAYOUT FOR REVIEW AND APPROVAL PRIOR TO ANY MODIFICATIONS OF ANY EXISTING SITE FEATURES, INCLUDING, BUT NOT LIMITED TO BARRIER WALLS, CONCRETE LANDINGS, RIM ELEVATIONS, CURBING, ETC.
  - REFER TO SURVEY PLANS FOR SEAWALL PROJECT FOR TOP OF WALL CAP ELEVATIONS.

ALL PROPOSED AND EXISTING ELEVATIONS ARE SHOWN IN N.A.V.D. 1988 DATUM.

MATCH LINE, SEE SHEET HP-2

SEE GRADING ENLARGEMENT, THIS SHEET.

CONCRETE RETAINING WALL, CUT EXISTING BARRIER WALL TO CONNECT WALKWAY THROUGH WALL APPROXIMATELY AS SHOWN. GRADING PLAN LAYOUT TO BE SUBMITTED BY CONTRACTOR AND APPROVED PRIOR TO WALL CUTTING/MODIFICATION.

EXISTING SPOT GRADE (TYP.)

EXISTING UTILITY BOX (ABOVE GROUND)

BEGIN SLOPE AT EDGE OF MANHOLE STRUCTURE. MAX. 5% SLOPE.

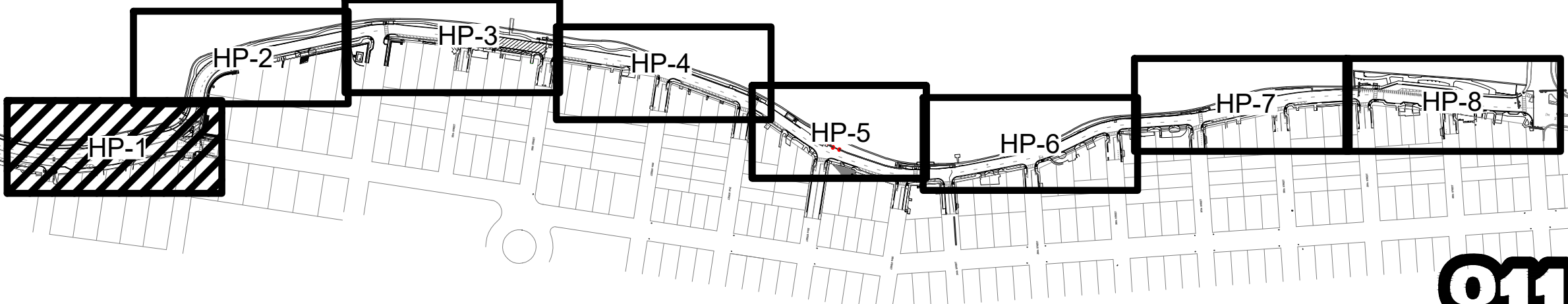
EXTEND SIDEWALK TO MEET CONNECTION POINT THROUGH EXISTING BARRIER WALL AS SHOWN. DASHED LINE APPROX. EDGE OF EXISTING WALKWAY.

26TH STREET

COLLINS AVE.



KEY MAP:



Know what's below.  
Call before you dig.

CRAVEN · THOMPSON AND ASSOCIATES, INC.  
ENGINEERS · PLANNERS · SURVEYORS  
3563 N.W. 53RD STREET, FORT LAUDERDALE, FLORIDA 33309  
TEL: (954) 739-6409  
FAX: (954) 739-6409  
FLORIDA LICENSED ENGINEERS, SURVEYORS & PLANNERS BUSINESS NO. 271  
FLORIDA LICENSED LANDSCAPE ARCHITECTURE BUSINESS NO. C00014  
MATERIAL SHOWN HEREIN IS THE PROPERTY OF CRAVEN THOMPSON & ASSOCIATES, INC. AND SHALL NOT BE REPRODUCED OR TRANSMITTED IN ANY FORM OR BY ANY MEANS, ELECTRONIC OR MECHANICAL, WITHOUT PERMISSION IN WRITING BY CRAVEN THOMPSON & ASSOCIATES, INC. © 2014

INDIAN CREEK GREENWAY  
PREPARED FOR:  
CITY OF MIAMI BEACH  
HARDSCAPE PLAN

Scott W. Peavler  
Digitally signed by Scott Wade Peavler  
Date: 2023.12.01 15:18:59 -05'00'  
Scott W. Peavler  
Florida R.L.A. No. 6666976  
September 1, 2023  
PROJECT NO.  
18-0043-001-01

HP-1  
SHEET 1 OF 8



R:\Vandscape\2018\18-0043-001-01 indian creek greenway\Drawings\18-0043-001-01\_HP.dwg [HP-2] Sep 01, 2023 4:32pm NPASTRE

ALL PROPOSED AND EXISTING  
ELEVATIONS ARE SHOWN IN  
N.A.V.D. 1988 DATUM.

DATE:	12/06/18	SEE SHEET	NDP	NDP	SWP	SWP
SCALE:		DESIGN BY:				
		DRAWN BY:				
		CHECKED BY:				
		APPROVED BY:				
		DATE:				
		BY:				
		DESCRIPTION:				

CRAVEN - THOMPSON AND ASSOCIATES, INC.  
ENGINEERS • PLANNERS • SURVEYORS  
3563 N.W. 53RD STREET, FORT LAUDERDALE, FLORIDA 33309  
TEL: (954) 739-6409  
FAX: (954) 739-6400  
FLORIDA LICENSED ENGINEERS, SURVEYORS & MAPPING BUSINESS NO. 271  
FLORIDA LICENSED LANDSCAPE ARCHITECTURE BUSINESS NO. C00014  
CRAVEN - THOMPSON AND ASSOCIATES, INC. AND SHALL NOT  
BE RESPONSIBLE FOR ANY ERRORS OR OMISSIONS.  
© 2018

INDIAN CREEK GREENWAY  
PREPARED FOR:  
CITY OF MIAMI BEACH  
HARDSCAPE PLAN

Scott  
Wade  
Peavler  
Digitally signed by  
Scott Wade Peavler  
Date: 2023.12.01  
15:19:26 -05'00'  
Scott W. Peavler  
Florida R.L.A. No. 6666976  
September 1, 2023  
PROJECT NO.  
18-0043-001-01

HP-2  
SHEET 2 OF 8

LAKE PANCOAST

8  
PARKING

4-5 STORY CONDOS

MATCH LINE, SEE SHEET HP-3

MATCH LINE, SEE SHEET HP-1

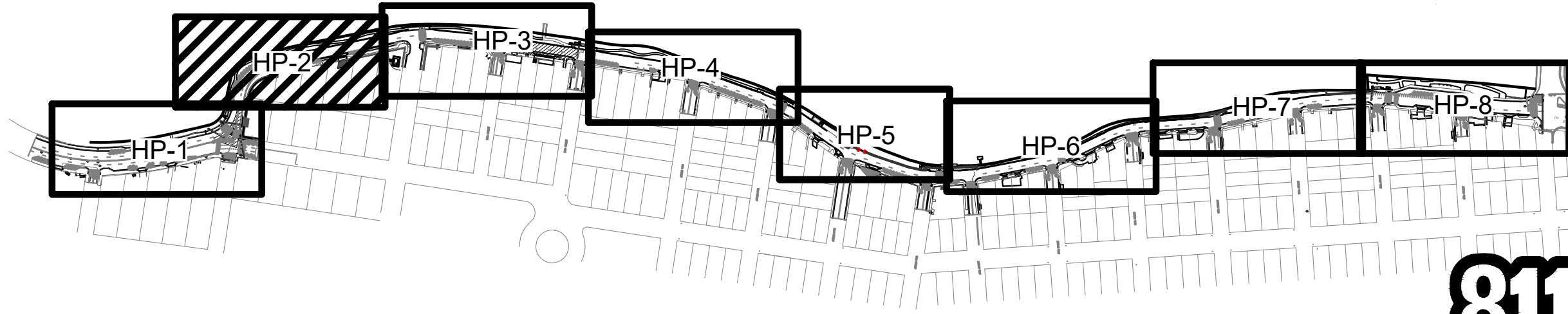
#### REFERENCE NOTES SCHEDULE

SYMBOL	DESCRIPTION	QTY	Detail
[F-101]	Recycling Receptacle	1	1/HD-2
[F-102]	Trash Receptacle	2	1/HD-2
[F-103]	Round Concrete Bench	10	3/HD-1
[F-104]	Bollard Light	126	3/HD-2
SYMBOL	DESCRIPTION	QTY	Detail
[H-100]	Concrete Path	11,918 sf	1/HD-1
[H-101]	Concrete Sidewalk	N/A	Existing
[H-102]	Barrier Wall	N/A	Existing
[H-103]	Sea Wall	N/A	See Engineer Plans
[H-104]	Concrete Pad for Bench & Receptacle	13	4/HD-1
SYMBOL	DESCRIPTION	QTY	Detail
[P-100]	Planter Area	N/A	See Landscape Plan

- NOTES:
- PATH MUST BE IN CONFORMANCE WITH MOST CURRENT AMERICAN WITH DISABILITIES ACT STANDARDS AND REGULATIONS FOR ACCESSIBLE DESIGN. PATH SHALL NOT EXCEED 5% RUNNING SLOPE OR 2% CROSS-SLOPE AT ANY TIME.
  - CONTRACTOR MUST FIELD VERIFY EXISTING AND PROPOSED CONDITIONS AND SUBMIT GRADING PLAN/LAYOUT FOR REVIEW AND APPROVAL PRIOR TO ANY MODIFICATIONS OF ANY EXISTING SITE FEATURES, INCLUDING, BUT NOT LIMITED TO BARRIER WALLS, CONCRETE LANDINGS, RIM ELEVATIONS, CURBING, ETC.
  - REFER TO SURVEY PLANS FOR SEAWALL PROJECT FOR TOP OF WALL CAP ELEVATIONS.

0 10' 20' 40'  
SCALE: 1"=20'-0"

KEY MAP:

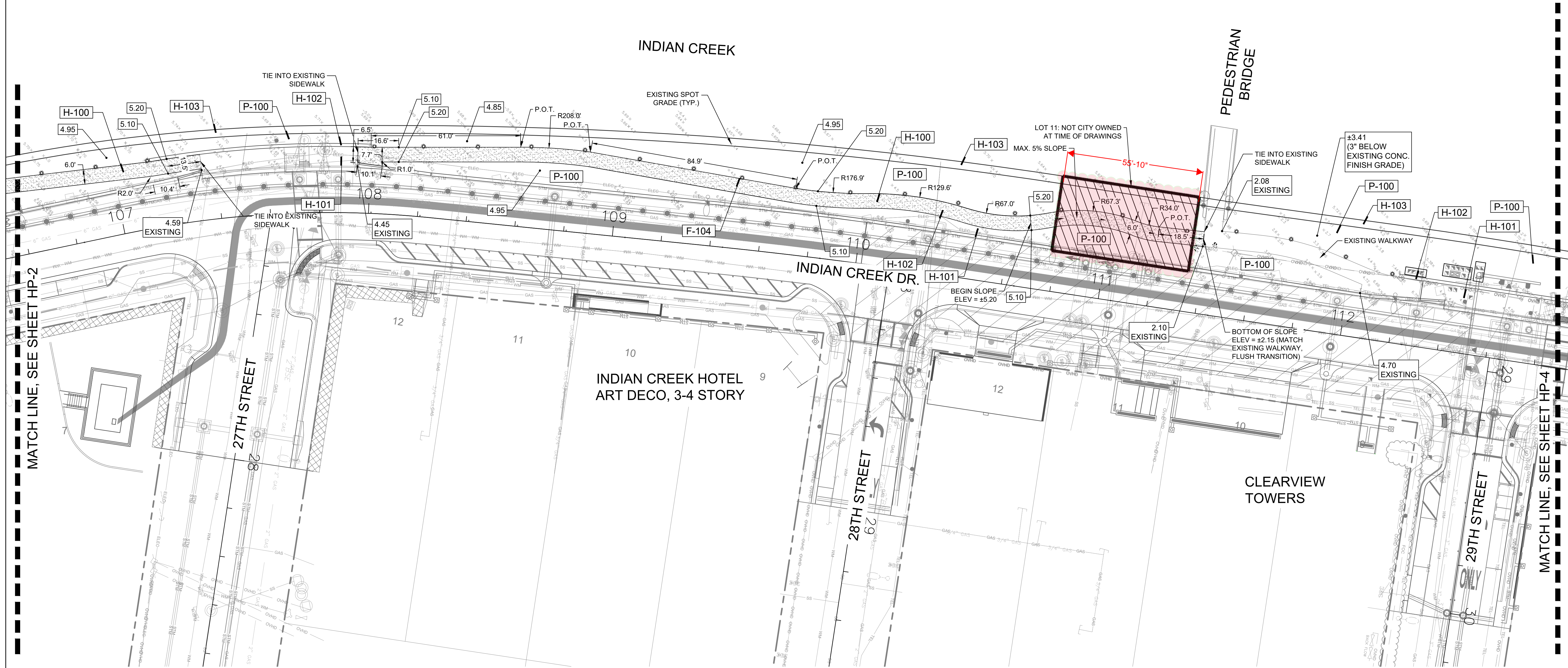




R:\Vandscape\2018\18-0043-001-01 Indian Creek Greenway\Drawings\18-0043-001-01\_HP.dwg [HP-3] Sep 01, 2023 4:33pm NPASTRE

Required Length of Floating dock = Approximately 1400 Linear feet \*\$4000/lf = 5.6 million

ALL PROPOSED AND EXISTING ELEVATIONS ARE SHOWN IN N.A.V.D. 1988 DATUM.



#### REFERENCE NOTES SCHEDULE

Site Furnishings			
SYMBOL	DESCRIPTION	QTY	Detail
[F-101]	Recycling Receptacle	1	1/HD-2
[F-102]	Trash Receptacle	2	1/HD-2
[F-103]	Round Concrete Bench	10	3/HD-1
[F-104]	Bollard Light	126	3/HD-2
Hardscape			
SYMBOL	DESCRIPTION	QTY	Detail
[H-100]	Concrete Path	11,918 sf	1/HD-1
[H-101]	Concrete Sidewalk	N/A	Existing
[H-102]	Barrier Wall	N/A	Existing
[H-103]	Sea Wall	N/A	See Engineer Plans
[H-104]	Concrete Pad for Bench & Receptacle	13	4/HD-1
Planter Area			
SYMBOL	DESCRIPTION	QTY	Detail
[P-100]	Planter Area	N/A	See Landscape Plan

- NOTES:
- PATH MUST BE IN CONFORMANCE WITH MOST CURRENT AMERICAN WITH DISABILITIES ACT STANDARDS AND REGULATIONS FOR ACCESSIBLE DESIGN. PATH SHALL NOT EXCEED 5% RUNNING SLOPE OR 2% CROSS-SLOPE AT ANY TIME.
  - CONTRACTOR MUST FIELD VERIFY EXISTING AND PROPOSED CONDITIONS AND SUBMIT GRADING PLAN/LAYOUT FOR REVIEW AND APPROVAL PRIOR TO ANY MODIFICATIONS OF ANY EXISTING SITE FEATURES, INCLUDING, BUT NOT LIMITED TO BARRIER WALLS, CONCRETE LANDINGS, RIM ELEVATIONS, CURBING, ETC.
  - REFER TO SURVEY PLANS FOR SEAWALL PROJECT FOR TOP OF WALL CAP ELEVATIONS.

#### KEY MAP:



CRAVEN · THOMPSON AND ASSOCIATES, INC.  
ENGINEERS · PLANNERS · SURVEYORS  
3563 N.W. 53RD STREET, FORT LAUDERDALE, FLORIDA 33309  
TEL: (954) 739-6409  
FAX: (954) 739-6400  
FLORIDA LICENSED ENGINEERS, SURVEYORS & MAPPING BUSINESS NO. 271  
FLORIDA LICENSED LANDSCAPE ARCHITECTURE BUSINESS NO. C00014

INDIAN CREEK GREENWAY  
PREPARED FOR:  
CITY OF MIAMI BEACH  
HARDSCAPE PLAN

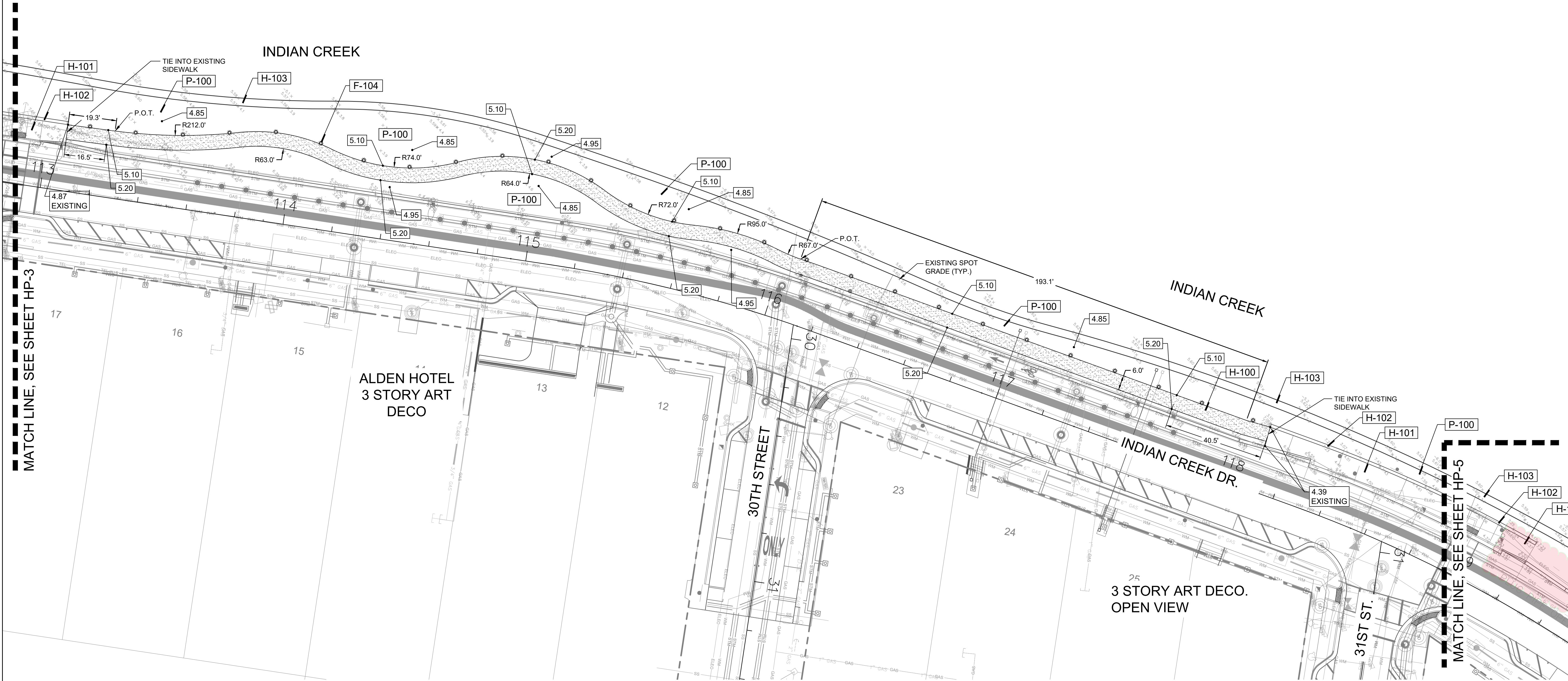
Scott W. Peavler  
Digitally signed by Scott Wade Peavler  
Date: 2023.12.01 15:19:52 -05'00'  
Scott W. Peavler  
Florida R.L.A. No. 6666976  
September 1, 2023  
PROJECT NO.  
18-0043-001-01



HP-3  
SHEET 3 OF 8



R:\Vandscape\2018\18-0043-001-01\_Indian\_creek\_greenway\Drawings\18-0043-001-01\_HP.dwg [HP-4] Sep 01, 2023 4:34pm NPASTRE

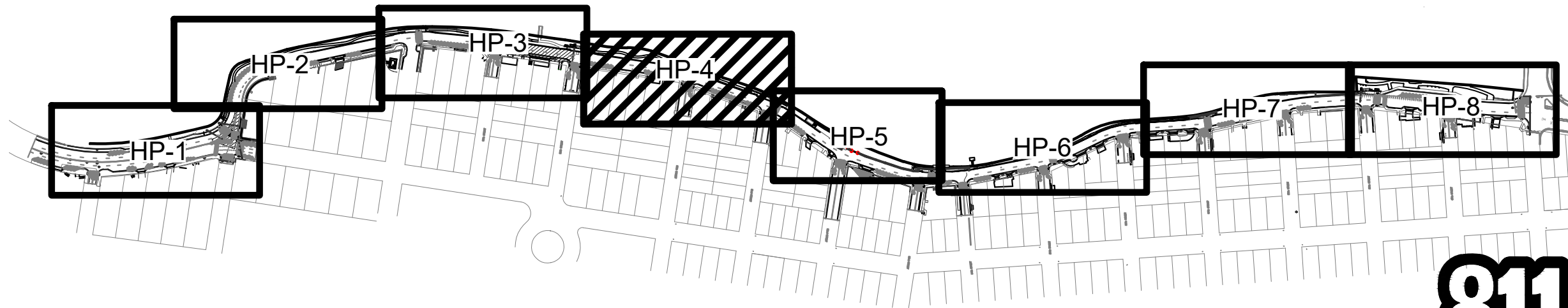


#### REFERENCE NOTES SCHEDULE

Site Furnishings			
SYMBOL	DESCRIPTION	QTY	Detail
[F-101]	Recycling Receptacle	1	1/HD-2
[F-102]	Trash Receptacle	2	1/HD-2
[F-103]	Round Concrete Bench	10	3/HD-1
[F-104]	Bollard Light	126	3/HD-2
Hardscape			
SYMBOL	DESCRIPTION	QTY	Detail
[H-100]	Concrete Path	11,918 sf	1/HD-1
[H-101]	Concrete Sidewalk	N/A	Existing
[H-102]	Barrier Wall	N/A	Existing
[H-103]	Sea Wall	N/A	See Engineer Plans
[H-104]	Concrete Pad for Bench & Receptacle	13	4/HD-1
Planter Area			
SYMBOL	DESCRIPTION	QTY	Detail
[P-100]	Planter Area	N/A	See Landscape Plan

- NOTES:
- PATH MUST BE IN CONFORMANCE WITH MOST CURRENT AMERICAN WITH DISABILITIES ACT STANDARDS AND REGULATIONS FOR ACCESSIBLE DESIGN. PATH SHALL NOT EXCEED 5% RUNNING SLOPE OR 2% CROSS-SLOPE AT ANY TIME.
  - CONTRACTOR MUST FIELD VERIFY EXISTING AND PROPOSED CONDITIONS AND SUBMIT GRADING PLAN/LAYOUT FOR REVIEW AND APPROVAL PRIOR TO ANY MODIFICATIONS OF ANY EXISTING SITE FEATURES, INCLUDING, BUT NOT LIMITED TO BARRIER WALLS, CONCRETE LANDINGS, RIM ELEVATIONS, CURBING, ETC.
  - REFER TO SURVEY PLANS FOR SEAWALL PROJECT FOR TOP OF WALL CAP ELEVATIONS.

#### KEY MAP:



ALL PROPOSED AND EXISTING  
ELEVATIONS ARE SHOWN IN  
N.A.V.D. 1988 DATUM.

DATE:	SCALE:	DESIGN BY:	DRAWN BY:	CHECKED BY:	APPROVED BY:
12/06/18	SEE SHEET	NDP	NDP	SWP	SWP

CRAVEN - THOMPSON AND ASSOCIATES, INC.  
ENGINEERS • PLANNERS • SURVEYORS  
3563 N.W. 53RD STREET, FORT LAUDERDALE, FLORIDA 33309  
TEL: (954) 739-6400  
FAX: (954) 739-6409  
FLORIDA LICENSED ENGINEERS, SURVEYORS & PLANNERS BUSINESS NO. 271  
FLORIDA LICENSED LANDSCAPE ARCHITECTURE BUSINESS NO. C00014  
CRAVEN - THOMPSON AND ASSOCIATES, INC. AND SHALL NOT  
BE USED FOR ANY OTHER PROJECT WITHOUT THE WRITTEN  
CONSENT OF CRAVEN - THOMPSON AND ASSOCIATES, INC.

INDIAN CREEK GREENWAY  
PREPARED FOR:  
CITY OF MIAMI BEACH  
HARDSCAPE PLAN

Scott W. Peavler  
Digitally signed by Scott W. Peavler  
Date: 2023.12.01 15:20:13 -05'00'  
Scott W. Peavler  
Florida R.L.A. No. 6666976  
September 1, 2023  
PROJECT NO.  
18-0043-001-01

HP-4  
SHEET 4 OF 8



						DATE:	12/08/16	SEE SHEET
						SCALE:		
						DESIGN BY:	NBP	
						DRAWN BY:	NBP	
						CHECKED BY:	SWP	
						APPROVED BY:	SWP	
						BY:	DATE:	
						DESCRIPTION:		

INDIAN CREEK GREENWAY
PREPARED FOR: CITY OF MIAMI BEACH
HARDSCAPE PLAN



R:\landscape\2018\18-0043-001-01 indian creek greenway\Drawings\18-0043-001-01\_HP.dwg [HP-5] Sep 01, 2023 4:59pm NPASTRE

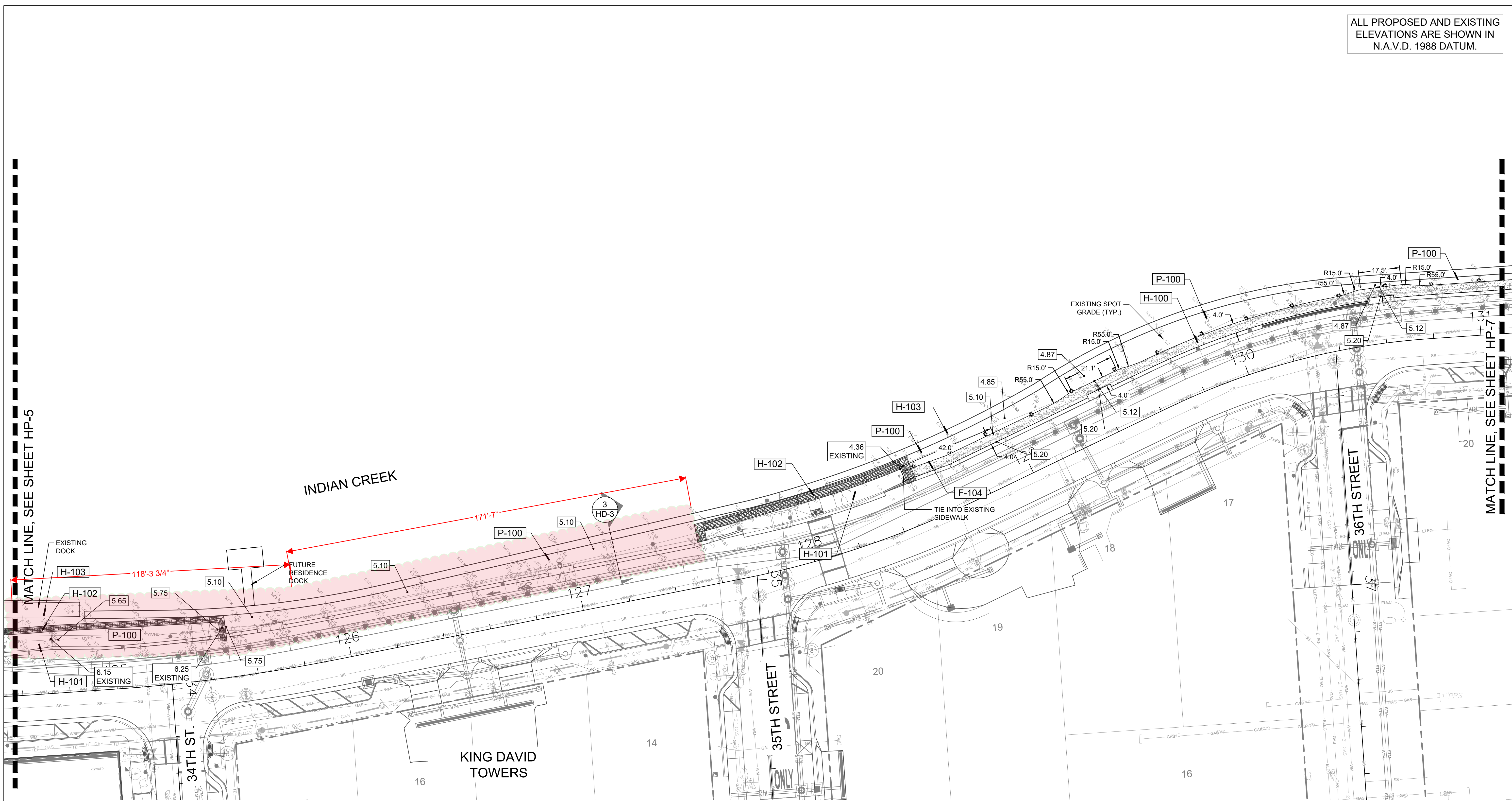


NOTES:

- \* PATH MUST BE IN CONFORMANCE WITH MOST CURRENT AMERICAN WITH DISABILITIES ACT STANDARDS AND REGULATIONS FOR ACCESSIBLE DESIGN. PATH SHALL NOT EXCEED 5% RUNNING SLOPE OR 2% CROSS-SLOPE AT ANY TIME.
- \* CONTRACTOR MUST FIELD AND PROPOSE CONDITIONS AND SUBMIT GRADING PLAN AND/OR EROSION CONTROL PLAN FOR REVIEW AND APPROVAL PRIOR TO ANY MODIFICATIONS OF ANY EXISTING SITE FEATURES, INCLUDING, BUT NOT LIMITED TO BARRIER WALLS, CONCRETE LANDINGS, RIM ELEVATIONS, CURBING, ETC.
- \* REFER TO SURVEY PLANS FOR SEAWALL PROJECT FOR TOP OF WALL CAP ELEVATIONS.



R:\Vandscape\2018\18-0043-001-01 Indian Creek Greenway\Drawings\18-0043-001-01\_HP.dwg [HP-6] Sep 01, 2023 5:00pm NPASTRE



#### REFERENCE NOTES SCHEDULE

Site Furnishings			
SYMBOL	DESCRIPTION	QTY	Detail
[F-101]	Recycling Receptacle	1	1/HD-2
[F-102]	Trash Receptacle	2	1/HD-2
[F-103]	Round Concrete Bench	10	3/HD-1
[F-104]	Bollard Light	126	3/HD-2
Hardscape			
SYMBOL	DESCRIPTION	QTY	Detail
[H-100]	Concrete Path	11,918 sf	1/HD-1
[H-101]	Concrete Sidewalk	N/A	Existing
[H-102]	Barrier Wall	N/A	Existing
[H-103]	Sea Wall	N/A	See Engineer Plans
[H-104]	Concrete Pad for Bench & Receptacle	13	4/HD-1
Planter Area			
SYMBOL	DESCRIPTION	QTY	Detail
[P-100]	Planter Area	N/A	See Landscape Plan

- NOTES:
- PATH MUST BE IN CONFORMANCE WITH MOST CURRENT AMERICAN WITH DISABILITIES ACT STANDARDS AND REGULATIONS FOR ACCESSIBLE DESIGN. PATH SHALL NOT EXCEED 5% RUNNING SLOPE OR 2% CROSS-SLOPE AT ANY TIME.
  - CONTRACTOR MUST FIELD VERIFY EXISTING AND PROPOSED CONDITIONS AND SUBMIT GRADING PLAN/LAYOUT FOR REVIEW AND APPROVAL PRIOR TO ANY MODIFICATIONS OF ANY EXISTING SITE FEATURES, INCLUDING, BUT NOT LIMITED TO BARRIER WALLS, CONCRETE LANDINGS, RIM ELEVATIONS, CURBING, ETC.
  - REFER TO SURVEY PLANS FOR SEAWALL PROJECT FOR TOP OF WALL CAP ELEVATIONS.

#### KEY MAP:



ALL PROPOSED AND EXISTING  
ELEVATIONS ARE SHOWN IN  
N.A.V.D. 1988 DATUM.

DATE:	12/06/18
SCALE:	SEE SHEET
DESIGN BY:	NDP
DRAWN BY:	NDP
CHECKED BY:	SWP
APPROVED BY:	SWP

**CRAVEN · THOMPSON AND ASSOCIATES, INC.**  
ENGINEERS · PLANNERS · SURVEYORS  
3563 N.W. 53RD STREET, FORT LAUDERDALE, FLORIDA 33309  
TEL: (954) 739-6409  
FAX: (954) 739-6409  
FLORIDA LICENSED ENGINEERS, SURVEYORS & MAPPING BUSINESS NO. 271  
FLORIDA LICENSED LANDSCAPE ARCHITECTURE BUSINESS NO. C00014  
CRAVEN · THOMPSON AND ASSOCIATES, INC. © 2018

**INDIAN CREEK GREENWAY**  
PREPARED FOR:  
**CITY OF MIAMI BEACH**  
**HARDSCAPE PLAN**

**Scott Wade Peavler**  
Digitally signed by Scott Wade Peavler  
Date: 2023.12.01 15:20:54 -05'00'  
Scott W. Peavler  
Florida R.L.A. No. 6666976  
September 1, 2023  
PROJECT NO.  
18-0043-001-01

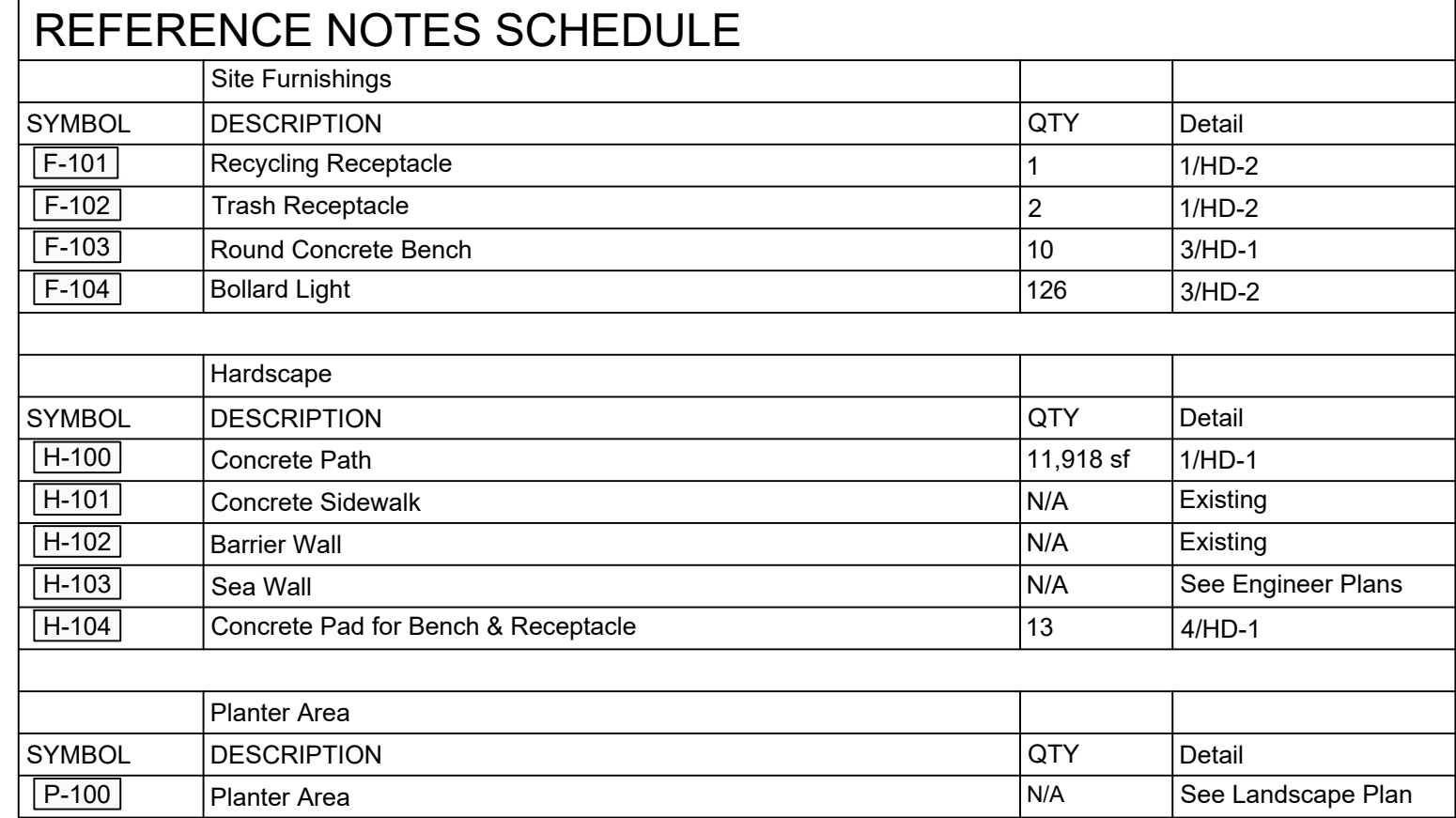
**HP-6**  
SHEET 6 OF 9



[illegible]

INDIAN CREEK GREENWAY
PREPARED FOR: CITY OF MIAMI BEACH
HARDSCAPE PLAN

Scott Wade Peavler	Digitally signed by Scott Wade Peavler Date: 2023.12.01 15:21:23 -05'00'
Scott W. Peavler Florida R.L.A. No. 6666976 September 1, 2023	
PROJECT NO. 18-0043-001-01	
HP-7	
SHEET 7 OF 9	



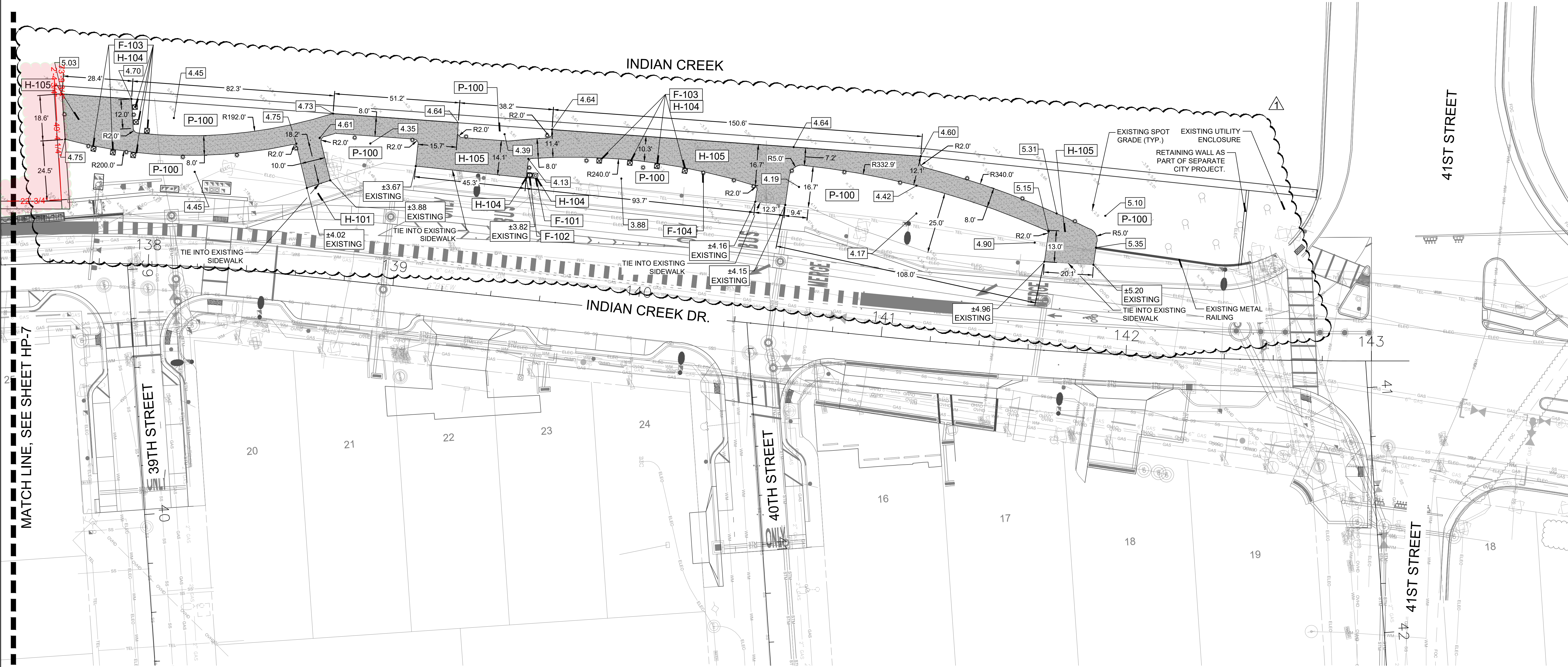
- NOTES:
- 1. PATH MUST BE IN CONFORMANCE WITH MOST CURRENT AMERICAN WITH DISABILITIES ACT STANDARDS AND REGULATIONS FOR ACCESSIBLE DESIGN. PATH SHALL NOT EXCEED 5% RUNNING SLOPE OR 2% CROSS-SLOPE AT ANY TIME.
- 2. CONTRACTOR MUST FIELD VERIFY EXISTING AND PROPOSED CONDITIONS AND SUBMIT GRADING PLAN/LAYOUT FOR REVIEW AND APPROVAL PRIOR TO ANY MODIFICATIONS OF ANY EXISTING SITE FEATURES, INCLUDING, BUT NOT LIMITED TO BARRIER WALLS, CONCRETE LANDINGS, RIM ELEVATIONS, CURBING, ETC.
- 3. REFER TO SURVEY PLANS FOR SEAWALL PROJECTIONS FOR TOP OF WALL CAP ELEVATIONS.



Know what's **below**.  
**Call** before you dig.



ALL PROPOSED AND EXISTING  
ELEVATIONS ARE SHOWN IN  
N.A.V.D. 1988 DATUM.

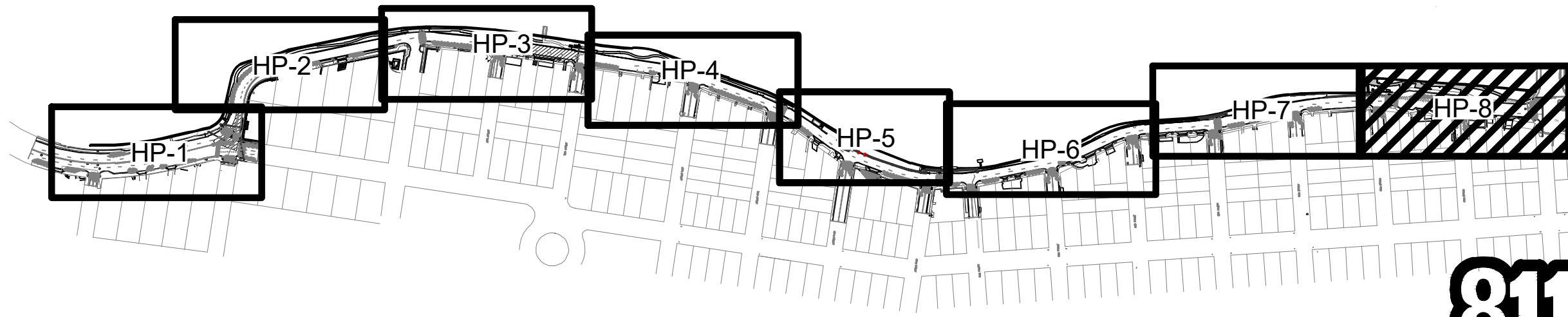


#### REFERENCE NOTES SCHEDULE

Site Furnishings			
SYMBOL	DESCRIPTION	QTY	Detail
[F-101]	Recycling Receptacle	1	1/HD-2
[F-102]	Trash Receptacle	2	1/HD-2
[F-103]	Round Concrete Bench	10	3/HD-1
[F-104]	Bollard Light	126	3/HD-2
Hardscape			
SYMBOL	DESCRIPTION	QTY	Detail
[H-100]	Concrete Path	11,918 sf	1/HD-1
[H-101]	Concrete Sidewalk	N/A	Existing
[H-102]	Barrier Wall	N/A	Existing
[H-103]	Sea Wall	N/A	See Engineer Plans
[H-104]	Concrete Pad for Bench & Receptacle	13	4/HD-1
[H-105]	Miami Beach Red Concrete	5,057 sf	5/HPD-1
Planter Area			
SYMBOL	DESCRIPTION	QTY	Detail
[P-100]	Planter Area	N/A	See Landscape Plan

- NOTES:
- PATH MUST BE IN CONFORMANCE WITH MOST CURRENT AMERICAN WITH DISABILITIES ACT STANDARDS AND REGULATIONS FOR ACCESSIBLE DESIGN. PATH SHALL NOT EXCEED 5% RUNNING SLOPE OR 2% CROSS-SLOPE AT ANY TIME.
  - CONTRACTOR MUST FIELD VERIFY EXISTING AND PROPOSED CONDITIONS AND SUBMIT GRADING PLAN/LAYOUT FOR REVIEW AND APPROVAL PRIOR TO ANY MODIFICATIONS OF ANY EXISTING SITE FEATURES, INCLUDING, BUT NOT LIMITED TO BARRIER WALLS, CONCRETE LANDINGS, RIM ELEVATIONS, CURBING, ETC.
  - REFER TO SURVEY PLANS FOR SEAWALL PROJECT FOR TOP OF WALL CAP ELEVATIONS.

#### KEY MAP:



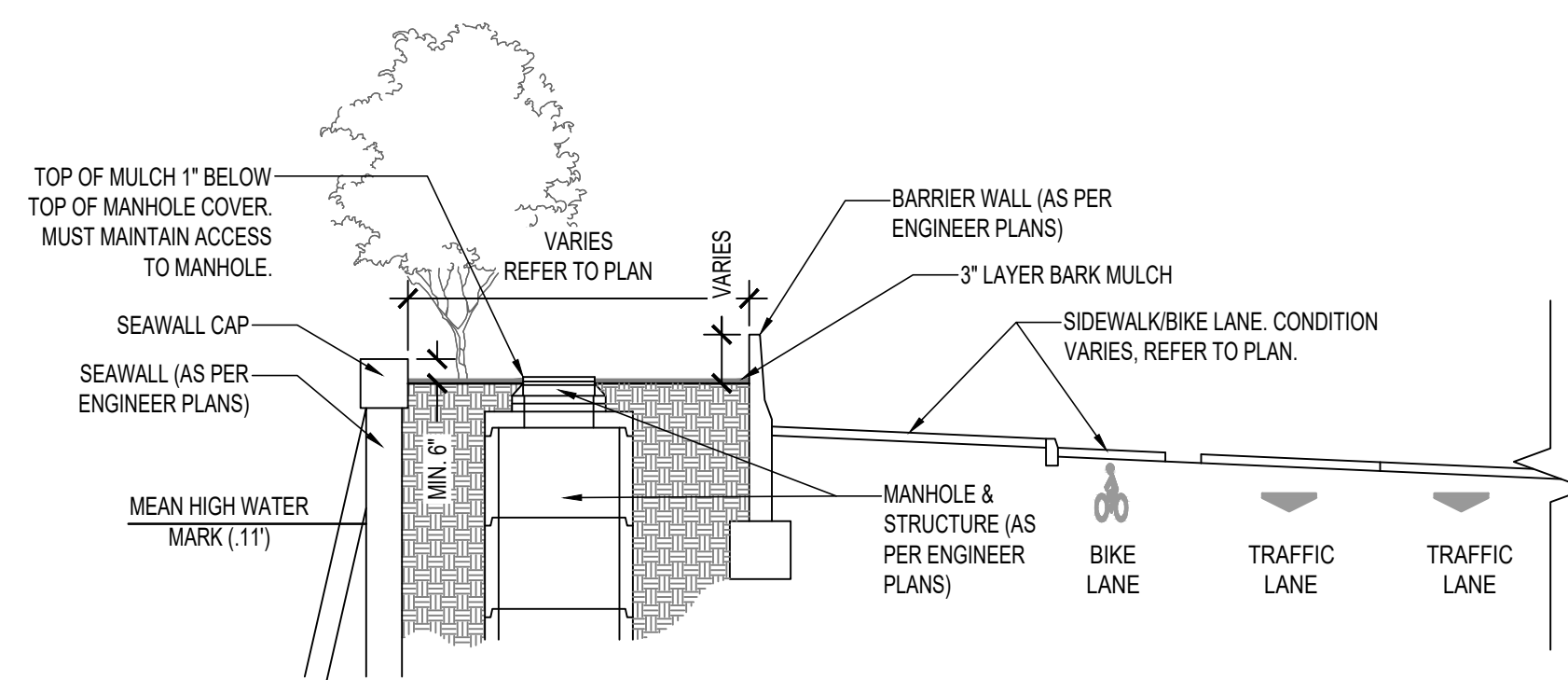
**CRAVEN · THOMPSON AND ASSOCIATES, INC.**  
ENGINEERS · PLANNERS · SURVEYORS  
35653 N.W. 53RD STREET, FORT LAUDERDALE, FLORIDA 33309  
TEL: (954) 739-6409  
FAX: (954) 739-6409  
FLORIDA LICENSED ENGINEER, SURVEYOR & PLANNER BUSINESS NO. 271  
FLORIDA LICENSED LANDSCAPE ARCHITECTURE BUSINESS NO. C000114  
MATERIAL SHOWN HEREIN IS THE PROPERTY OF CRAVEN · THOMPSON & ASSOCIATES, INC. AND SHALL NOT BE REPRODUCED OR TRANSMITTED IN ANY FORM OR BY ANY MEANS, ELECTRONIC OR MECHANICAL, WITHOUT PERMISSION IN WRITING BY CRAVEN · THOMPSON & ASSOCIATES, INC.

**INDIAN CREEK GREENWAY**  
PREPARED FOR:  
**CITY OF MIAMI BEACH**  
**HARDSCAPE PLAN**

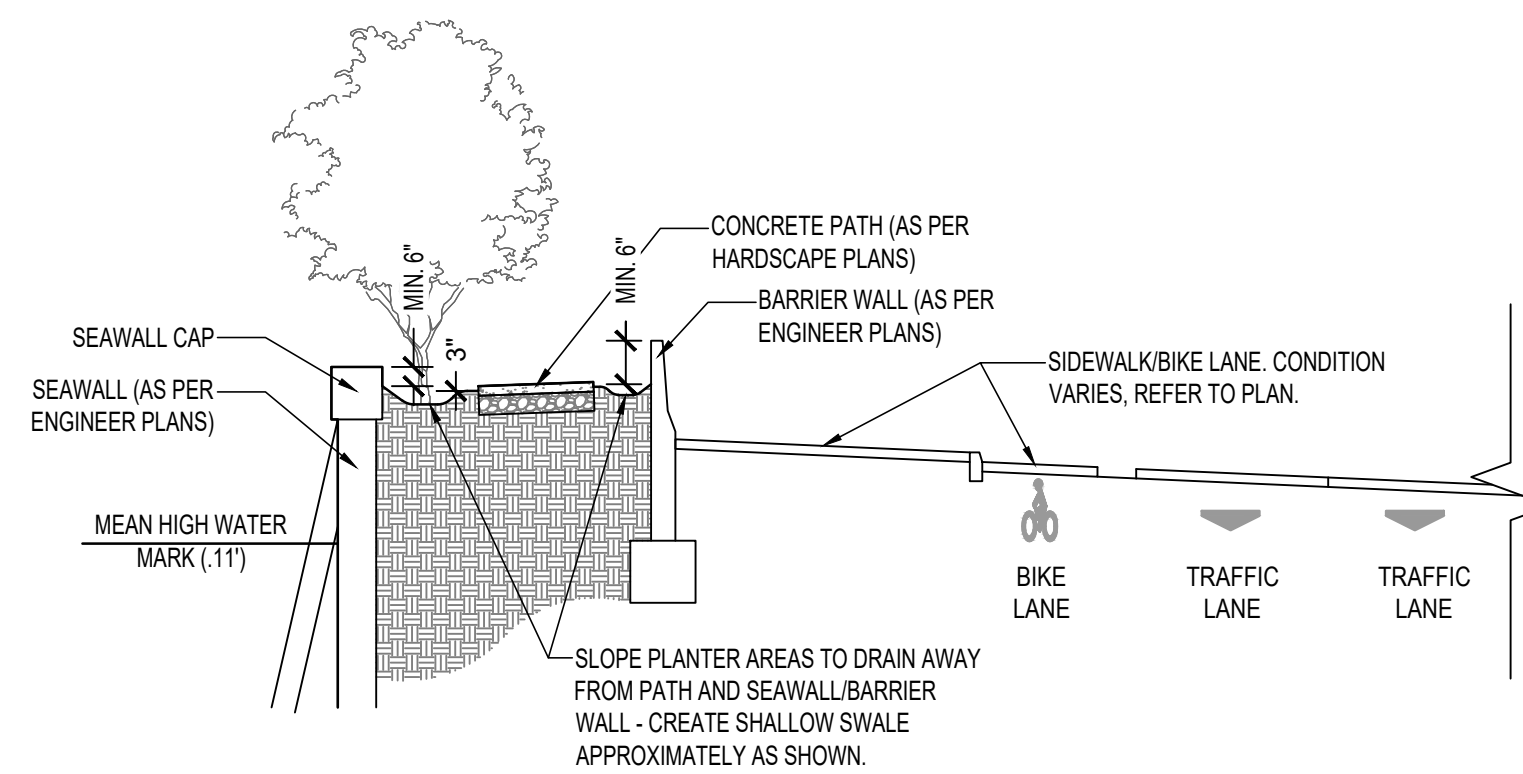
**Scott Wade Peavler**  
Digitally signed by Scott Wade Peavler  
Date: 2023.12.01 15:21:45 -05'00'  
Scott W. Peavler  
Florida R.L.A. No. 6666976  
December 1, 2023  
PROJECT NO.  
18-0043-001-01

**HP-8**  
SHEET 8 OF 9

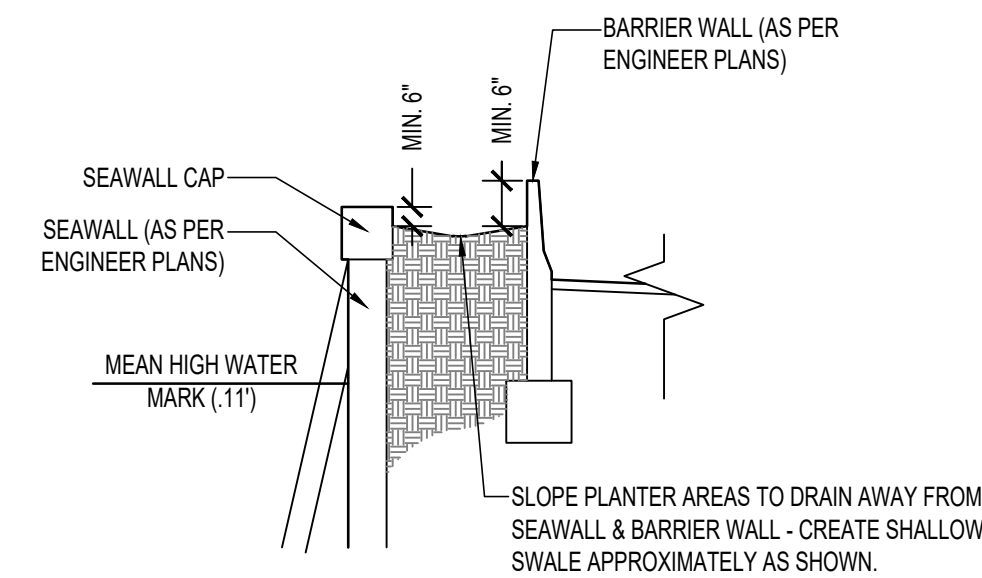





1 SECTION A - TYPICAL CONDITION AT MANHOLE  
SECTION NTS



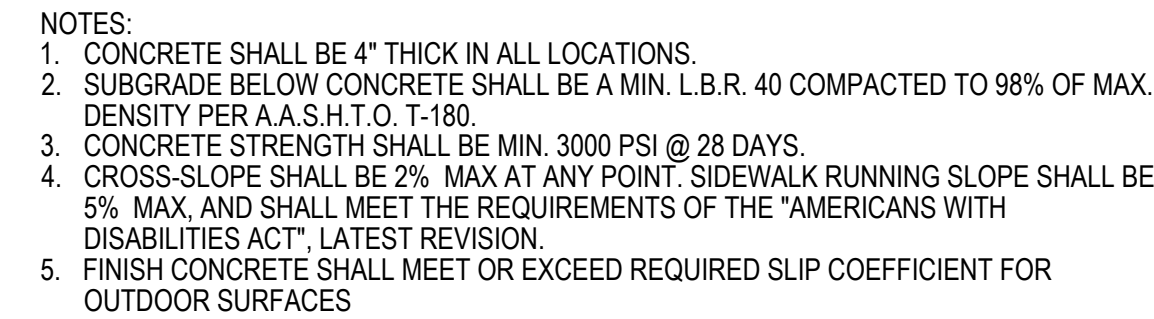
## 2 SECTION B - TYPICAL PATH CONDITION



**3 SECTION C - TYPICAL PLANTER ONLY CONDITION**

<div>HP-9</div> <div>SHEET 9 OF 9</div>	<div>18-0043-001-01</div> <div>PROJECT NO.</div> <div>Florida R.L.A. No. 6666976</div> <div>September 1, 2023</div>	<div>Scott W. Peavler</div> <div>Digitally signed by Scott Wade Peavler</div> <div>Date: 15:24:18 -05'00'</div>	<div>INDIAN CREEK GREENWAY</div> <div>PREPARED FOR:</div> <div>CITY OF MIAMI BEACH</div> <div>TYPICAL CROSS-SECTIONS</div>	<div><div>Craven • Thompson and Associates, Inc. ENGINEERS • PLANNERS • SURVEYORS 3563 N.W. 53RD STREET, FORT LAUDERDALE, FLORIDA 33309 FAX: (954) 739-6409 TEL.: (954) 739-6400 FLORIDA LICENSED ENGINEERING, SURVEYING &amp; MAPPING BUSINESS NO. 271 FLORIDA LICENSED LANDSCAPE ARCHITECTURE BUSINESS NO. 0000114</div></div>	DATE:					12/06/18	
					SCALE:						SEE SHEET
					DESIGN BY:						NDP
					DRAWN BY:						NDP
					CHECKED BY:						SWP
					APPROVED BY:						SWP





## DETAIL

NTS

TYPE A JOINT:  
1/4" EXPANSION JOINT (TYP.)

1/2" RADIUS (TYP.)

1/4"

5'-0"

LIMEROCK BASE SUBGRADE

TYPE B JOINT:  
1 1/2" DEEP X 3/4" WIDE NOTCH WITH 1/2" RADIUS AS REQUIRED

NOTE 3

5'-0" (TYP.)

25'-0" BETWEEN EXP. JTS.

MASTIC JOINT SEALER, 1" DEEP (TYP.)

5'-0"

1/4" EXP. JOINT

## DETAIL

NTS

1. MANUFACTURER: WAUSAU TILE, INC.  
TROY DAHLKE  
(813) 334-0016  
WWW.WAUSAUTILE.COM  
(OR APPROVED EQUAL)
2. MODIFI: TF352
3. COLOR: A21 (BUFF)
4. SIZE: 25" DIA. (ROUND)
5. INSTALLATION: INSTALL ON 2"x2" SQUARE CONCRETE PAD IN LOCATIONS SHOWN ON PLANS USING PROVIDED ANCHORING INSERTS
6. QUANTITY: 15
7. CONTRACTOR TO SUBMIT CUT SHEET INCLUDING COLOR SAMPLE FOR REVIEW AND APPROVAL



NTS



NTS



NTS

**CRAVEN • THOMPSON AND ASSOCIATES, INC.**  
ENGINEERS • PLANNERS • SURVEYORS  
3363 N.W. 53RD STREET, FORT LAUDERDALE, FLORIDA 33309  
TEL: (954) 739-6400  
FAX: (954) 739-6409  
FLORIDA LICENSED ENGINEERING, SURVEYING & MAPPING BUSINESS NO. 271  
FLORIDA LICENSED LANDSCAPE ARCHITECTURE BUSINESS NO. C000114

---

MATERIAL SHOWN HEREON IS THE PROPERTY OF CRAVEN THOMPSON AND ASSOCIATES, INC. AND SHALL NOT BE REPRODUCED OR TRANSMITTED IN ANY FORM OR BY ANY MEANS, ELECTRONIC OR MECHANICAL, INCLUDING PHOTOCOPYING, RECORDING, OR BY ANY INFORMATION STORAGE AND RETRIEVAL SYSTEM, WITHOUT THE WRITTEN PERMISSION OF CRAVEN THOMPSON AND ASSOCIATES, INC. © COPYRIGHT 2008

## INDIAN CREEK GREENWAY

PREPARED FOR:  
CITY OF MIAMI BEACH  
HARDSCAPE DETAILS

Digitally signed by Scott Wade Peavler  
Date: 2023.12.01 15:24:58 -05'00'

Scott W. Peavler  
Florida R.L.A. No. 6666976  
December 1, 2023

PROJECT NO.  
18-0043-001-01

HD-1  
SHEET 1 OF 2





# VICTOR STANLEY®

*Create a timeless moment.®*

\* ALL DIMENSIONS ARE IN INCHES \*

P.O. DRAWER 300 • DUNKIRK, ND 58754 USA  
TEL. TOLL FREE: (800) 388-2573 (USA & CANADA)  
TEL. (301) 855-8300 • FAX (410) 257-7579  
WEB SITE: HTTP://WWW.VICTORSTANLEY.COM

#### AVAILABLE OPTIONS:

##### POWDER COATING

10 STANDARD COLORS, 2 OPTIONAL METALLIC COLORS,  
CUSTOM COLORS (EXCLUDING THE RAL RANGE)

##### SECURITY

STANDARD WITH LOCKABLE LATCH (AS SHOWN), AVAILABLE  
WITH OPTIONAL KEYPED LOCK BOX, (OPTIONAL TRIANGLE  
LOCK BOX, LID BOLTED IN PLACE, AVAILABLE WITH  
OPTIONAL MOUNT WITH 3 IN-LINE ANCHOR HOLES AND  
OPTIONAL BOTTOM PLATE COVER.

##### NOTES:

- BRANDINGS NOT TO SCALE. DO NOT SCALE BRANDINGS.
- ALL FABRICATED METAL COMPONENTS ARE STEEL, SHOTBLASTED, ETCHED, PHOSPHATIZED, PREHEATED, AND ELECTROSTATICALLY POWDER-COATED WITH T.E.I.C. POLYESTER POWDER COATINGS. PRODUCTS ARE FULLY CLEANED AND PRETREATED, PREHEATED AND COATED WHILE HOT TO FILL CREVICES AND BULBO FILM COATING. COATED PARTS ARE THEN FULLY CURED TO COATING MANUFACTURER'S SPECIFICATIONS. THE THICKNESS OF THE RESULTING FINISH AVERAGES 8-10 MILS (200-250 MICRONS).
- SOIL IMPREGNATED BRONZE SUSPENS AND STAINLESS STEEL PIVOT PINS FOR DOOR MOVEMENT, STANDARD 5/16\" DIA. SOLID STEEL LATCH ASSEMBLY OR OPTIONAL PATENTED STAINLESS STEEL KEYED LOCK ASSEMBLY.
- THIS VICTOR STANLEY, INC. PRODUCT MUST BE PERMANENTLY AFFIXED TO THE GROUND. CONSULT YOUR LOCAL CODES FOR REGULATIONS.
- VICTOR STANLEY, INC., PLASTIC LINER LINERS ARE VOLUED ON TOOLING DESIGNED FOR AND OWNED BY VICTOR STANLEY. THEY OFFER MAXIMUM CAPACITY AND STRENGTH WITH LIGHTWEIGHT CONSTRUCTION USING OPTICAL MOLDED RIBS, INTERNAL HANDHOLES, AND HIGH-STRENGTH MATERIALS. THIS MINIMIZES HANDLING DIFFICULTY AND FACILITATES EASY EMPTYING AND STORAGE WHILE AVOIDING LID SERVICE LIFE.
- ANCHOR BOLT NOT PROVIDED BY VICTOR STANLEY, INC.
- FOR HIGH SALT ABUSIVE CLIMATES, HOT-DIP GALVANIZING BEFORE POWDER COATING IS AVAILABLE. HOT-DIP GALVANIZING IS PERFORMED FOR VICTOR STANLEY, INC. BY AN EXPERIENCED QUALIFIED FIRM TO WHICH PRODUCTS ARE SHIPPED FOR GALVANIZING. HOT-DIP GALVANIZING INCLUDES AN ADHESIVE PRE-TREATMENT AND IMMERSION IN A TANK OF CHARGED LIQUID ZINC AT OR AROUND 800°F (430°C). THE RESULTING SURFACE IS RESISTANT TO RUST BUT HAS SOME UNEVENNESS RESULTING FROM THE WAVING OF THE ZINC TO THE STEEL SURFACE. AS A RESULT, THE POWDER-COATING FINISH OVER THIS TREATED SURFACE MAY EXHIBIT BUMPS, UNEVENNESS, AND MAY NOT BE AS SMOOTH AS THE STANDARD FINISH. THIS UNEVEN OR INCONSISTENT FINISH IS NORMAL FOR GALVANIZING. CONTACT MANUFACTURER FOR DETAILS.
- ALL SPECIFICATIONS ARE SUBJECT TO CHANGE. CONTACT MANUFACTURER FOR DETAILS.
- THIS PRODUCT IS SHIPPED FULLY ASSEMBLED.

#### LIDS

STANDARD TAPERED FORMED LID, AVAILABLE WITH OPTIONAL DOME LID, DOME LID WITH STAINLESS STEEL ASHTRAY, CONE LID, CONE LID WITH SELF-CLOSING DOOR (AS SHOWN), BATH SINKET LID, BATH SINKET LID WITH STAINLESS STEEL ASHTRAY, AND RECYCLE LIDS. ASHTRAYS AVAILABLE WITH OPTIONAL ASHTRAY COVER.  
CUSTOM PLAQUES & DECALS  
AVAILABLE WITH PLID PLAQUES IN VARIOUS SIZES AND PRESSURE SENSITIVE VINYL OUTDOOR DECALS.

36 GALLON SIDE-DOOR-OPENING LITTER RECEPTACLE  
SHOWING: OPTIONAL CONVEY LID WITH SELF-CLOSING DOOR

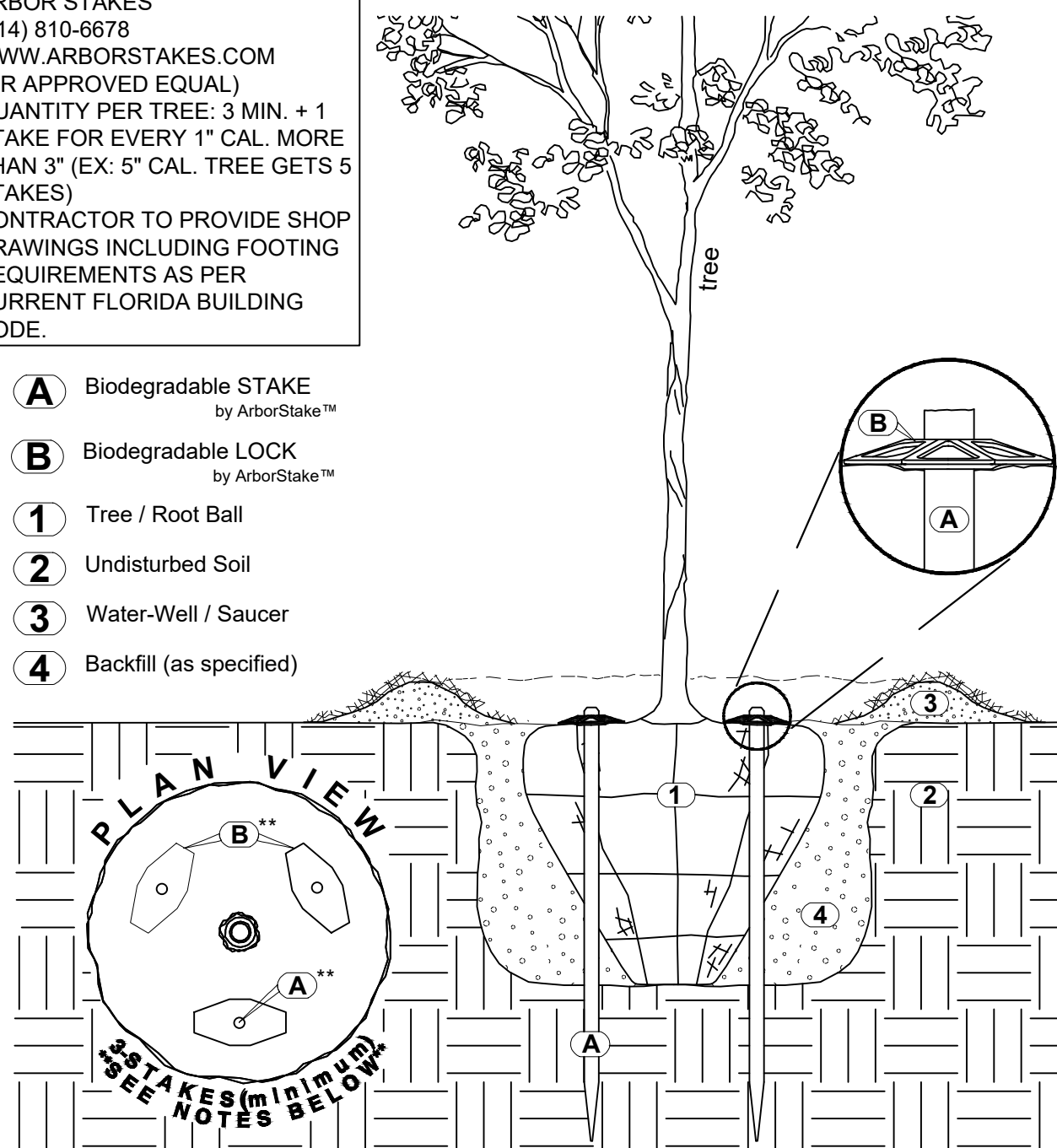
COPYRIGHT 2017 VICTOR STANLEY, INC. ALL RIGHTS RESERVED  
REV. 12/17/17 DRAWN V.F.T., 2017-1229

# 1 TRASH & RECYCLE RECEPTACLES

MANUFACTURER'S DETAIL NTS

1. MANUFACTURER:  
ARBOR STAKES  
(214) 810-6678  
WWW.ARBORSTAKES.COM  
(OR APPROVED EQUAL)
2. QUANTITY PER TREE: 3 MIN. + 1  
STAKE FOR EVERY 1" CAL. MORE  
THAN 3" (EX: 5" CAL. TREE GETS 5  
STAKES)
3. CONTRACTOR TO PROVIDE SHOP  
DRAWINGS INCLUDING FOOTING  
REQUIREMENTS AS PER  
CURRENT FLORIDA BUILDING  
CODE.

- A** Biodegradable STAKE  
by ArborStake™
- B** Biodegradable LOCK  
by ArborStake™
- 1** Tree / Root Ball
- 2** Undisturbed Soil
- 3** Water-Well / Saucer
- 4** Backfill (as specified)



NOTES:

- Minimum Stake Quantity is (3) - THEN - Add (1) Stake Per Caliper Inch Greater -than 3"  
· Stakes Shall Be Driven THROUGH The Root Ball As Shown  
· Ensure Trunk Base (root flare) Is Free From Staking And Other Materials  
· Aboveground Guying and/or Metallic Staking Systems NOT Allowed And Shall Be Rejected  
· Install Staking System As Per Manufacturer's Instructions [www.arborstakes.com](http://www.arborstakes.com)

## 2 TREE ANCHOR SYSTEM

### MANUFACTURER DETAIL

NTS

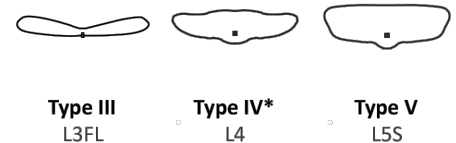
<b>Submitting Agency:</b>  <b>SESCO</b> LIGHTING FORT LAUDERDALE 7550 Georgetown Ft. Lauderdale, FL 33326 P: (954) 474-0800 F: (954) 474-9773	<b>Description:</b> <b>CO42-18LED01-10W-VOLT-L3FL-30K-HSS-SGP-2 0 (VOLT)</b> <b>Project:</b> <b>CITY OF MIAMI BEACH - INDIAN CREEK GREENWAY</b> <b>Notes:</b> <b>MODIFIED TO 10W</b>
---	--

## CITI &amp; COSMO



**Distributions:**

Type I	Type II	Type III
L1	L2B	L3



CCT	CRI
3000K 4000K	C70
	C80

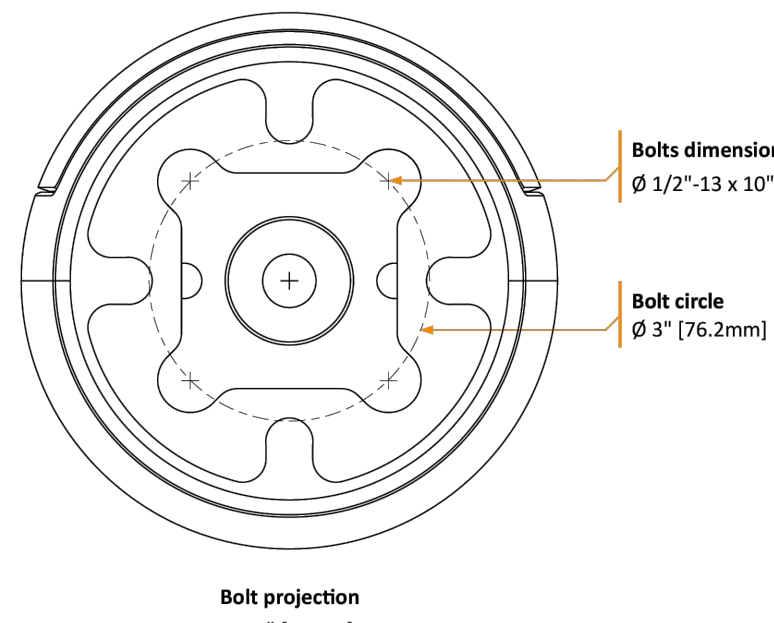
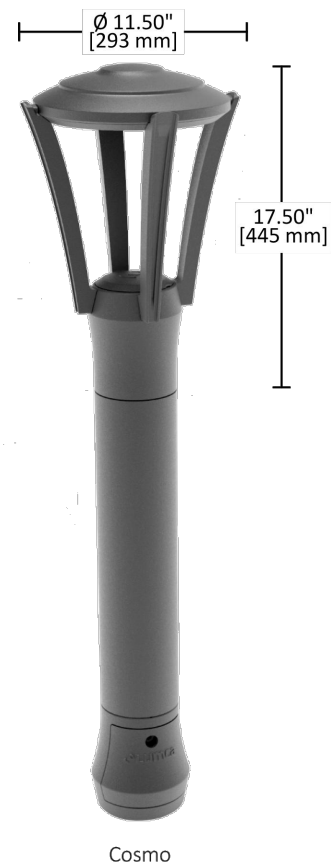
### Characteristics



**Source:**

Type I-II-III-V	
530mA <b>18LED05 30 W</b>	700mA <b>18LED07 40 W</b>

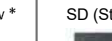
Type IV*	
530mA <b>12LED05 20 W</b>	700mA <b>12LED07 27 W</b>



### 3 BOLLARD

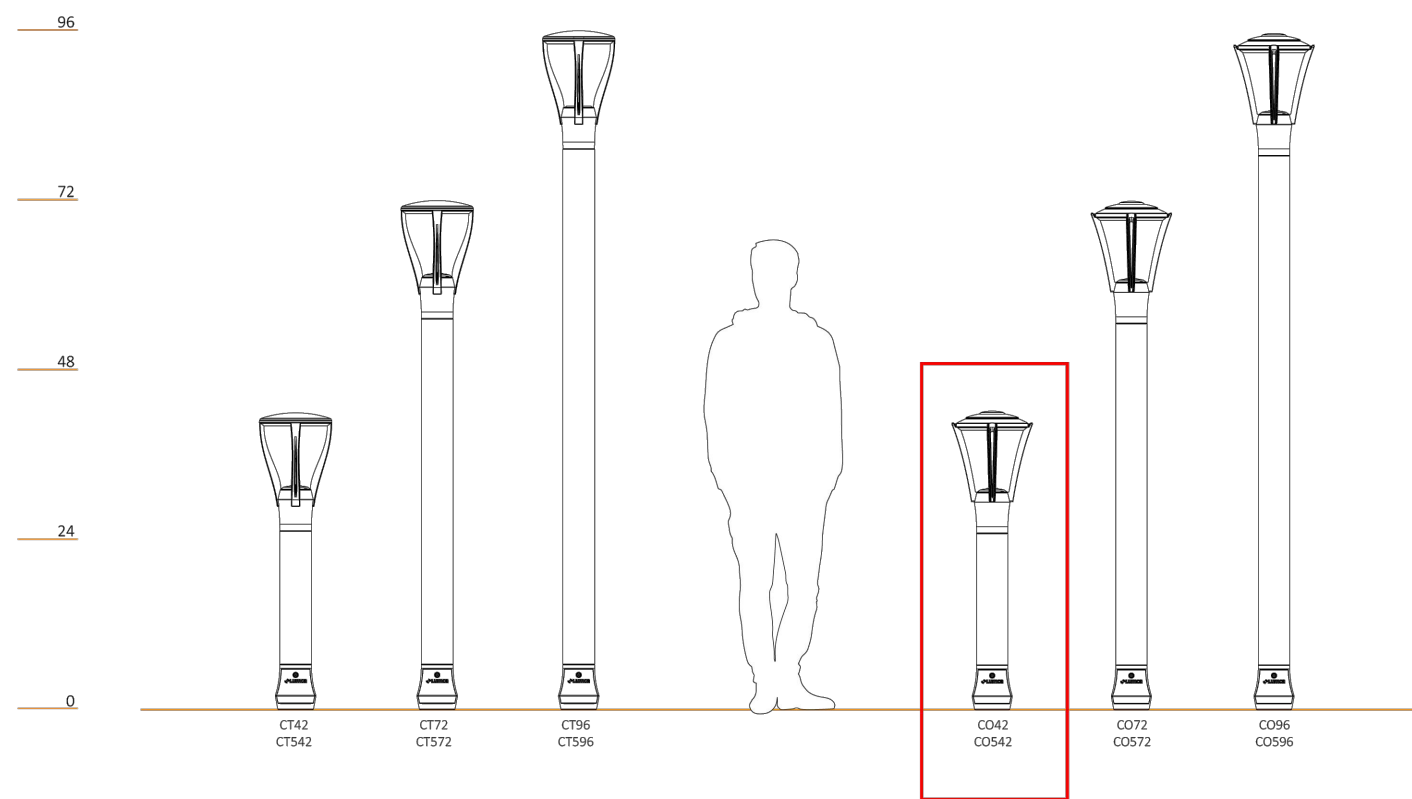
#### MANUFACTURER'S DETAIL

NTS

CITII (CTxx) & COSMO (C0xx) Bollards							
xx= total height in inches							
Product code	Source	Voltage	Distribution	CCT	Options	Color	Anchor bolts
Clear lens	Type I (I-I)-V	120	L1	30K	* See options below *	SD (Steel Dark)	Supplied by Lumca
CT42	18LED05 30W	208	L2B	30KC20			Supplied by others
CT72	18LED07 40W	240	L3	40K			Existing
CT96	Type IV*	227	L3H	40KC80			
C042	12LED05 20W	347	L4*	TYPE L1			
C072	12LED07 27W	480	L5	TYPE L3			
C096				TYPE L2			
Frosted lens	18LED01 MODIFIED 125MA 10W						
CT542							
CT572							
CT596							
C0542							
C0572							
C0596							

House side shield	Surge protector	Programmable driver	Photocell
HSS	SGP-10 (120-277V) SGP-20 (120-277V) SGP-10HV (347-480V) SGP-20HV (347-480V)	PRG	BTp

- **HSS** House side shield (internal)
- **SGP** 10kV or 20kV Surge protection
- **PRG** Programmable driver
- **BTP** Button type photocell



1. MANUFACTURER:  
LUMCA (OR APPROVED EQUAL)
2. REPRESENTATIVE:  
JASON BOEHM  
SESOCO LIGHTING  
(954) 474-9888 (MAIN)  
(305) 299-2288 (CELL)  
WWW.SESOCOLIGHTING.COM
3. MODEL: COSMO (CO42)  
COLOR: SD (STEEL DARK)
5. CONTRACTOR TO PROVIDE SHOP DRAWINGS INCLUDING COLOR  
SAMPLE, FOR REVIEW AND APPROVAL PRIOR TO CONSTRUCTION



**Craven • Thompson and Associates, Inc.**  
**Engineers • Planners • Surveyors**



MATERIAL SHOWN HEREON IS THE PROPERTY OF CRAVEN THOMPSON & ASSOCIATES, INC. AND SHALL NOT BE REPRODUCED IN WHOLE OR IN PART WITHOUT WRITTEN PERMISSION OF CRAVEN THOMPSON & ASSOCIATES, INC.

# INDIAN CREEK GREENWAY

PREPARED FOR:

## HARDSCAPE DETAILS

Scott  
Wade  
Peavler

Digitally signed  
by Scott Wade  
Peavler  
Date:  
2023.12.01  
15:25:33 -05'00'

Scott W. Peavler Florida R.L.A. No. 6666976 October 11, 2023
PROJECT NO. 18-0043-001-01

HD-2  
SHEET 2 OF 2



Know what's **below**.  
**Call** before you dig.