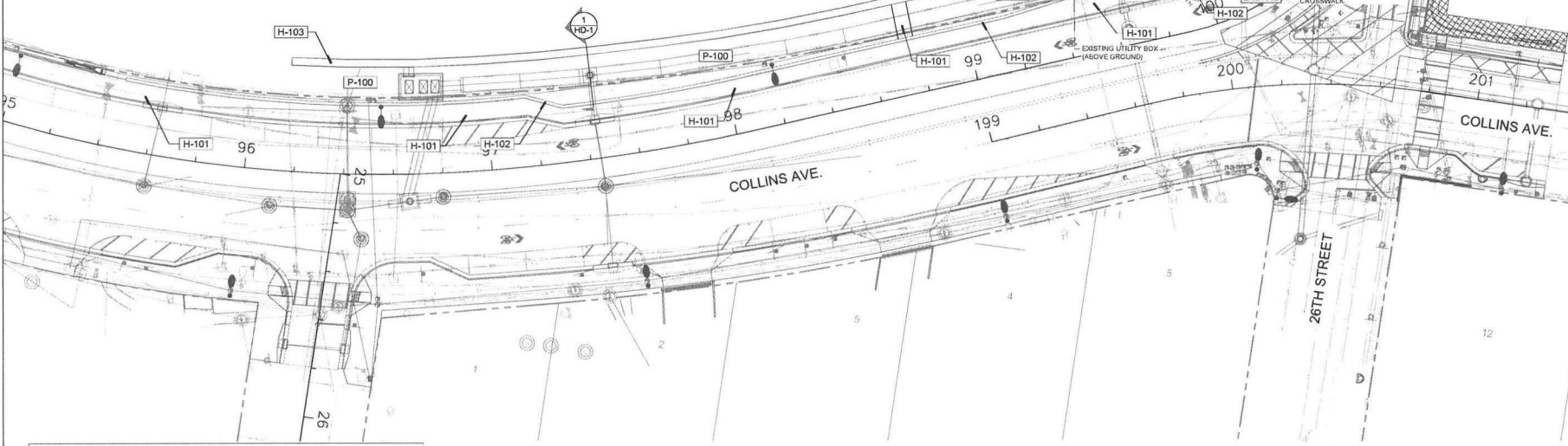


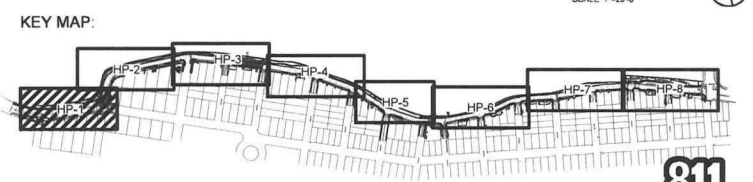
LAKE PANCOAST



REFERENCE NOTES SCHEDULE			
Site Furnishings			
SYMBOL	DESCRIPTION	QTY	Detail
F-101	Recycling Receptacle	1	1HSD-2
F-102	Trash Receptacle	2	1HSD-2
F-103	Round Concrete Bench	10	3HSD-1
F-104	Bollard Light	126	3HSD-2
Hardscape			
SYMBOL	DESCRIPTION	QTY	Detail
H-101	Concrete Path	11,918 sf	1HSD-1
H-102	Concrete Sidewalk	N/A	Existing
H-103	Barrier Wall	N/A	Existing
H-104	Sea Wall	N/A	See Engineer's Plans
H-105	Concrete Pad for Bench & Receptacle	13	4HSD-1
Planter Area			
SYMBOL	DESCRIPTION	QTY	Detail
P-100	Planter Area	N/A	See Landscape Plan

**NOTES:**

- 1. PATH MUST BE IN CONFORMANCE WITH MOST CURRENT AMERICAN WITH DISABILITIES ACT STANDARDS AND REGULATIONS FOR ACCESSIBLE DESIGN. PATH SHALL NOT EXCEED 5% RUNNING SLOPE OR 2% CROSS-SLOPE AT ANY TIME.
- 2. CONTRACTOR MUST FIELD VERIFY EXISTING AND PROPOSED CONDITIONS AND SUBMIT GRADING PLAN LAYOUT FOR REVIEW AND APPROVAL PRIOR TO ANY MODIFICATIONS OF ANY EXISTING SITE FEATURES, INCLUDING, BUT NOT LIMITED TO BARRIER WALLS, CONCRETE LANDINGS, RIM ELEVATIONS, CURBING, ETC.
- 3. REFER TO SURVEY PLANS FOR SEAWALL PROJECT FOR TOP OF WALL CAP ELEVATIONS.



ALL PROPOSED AND EXISTING ELEVATIONS ARE SHOWN IN N.A.V.D. 1988 DATUM.

DATE	SCALE	DESIGN BY	DRAWN BY	CHECKED BY	APPROVED BY
10/09/18	SEE SHEET	NCP	NCP	NCP	NCP

**CRAVEN • THOMPSON AND ASSOCIATES, INC.**  
ENGINEERS • PLANNERS • SURVEYORS  
3503 N.W. 33RD STREET, FORT LAUDERDALE, FL 33309  
TEL: 954.333.1111 FAX: 954.333.1112  
WWW.CTASOFT.COM  
FLORIDA LICENSED ENGINEER, ARCHITECT, SURVEYOR NO. 12007

**INDIAN CREEK GREENWAY**  
PREPARED FOR  
**CITY OF MIAMI BEACH**  
**HARDSCAPE PLAN**

Scott Wade Peavler  
Digitally signed by Scott Wade Peavler  
Date: 2023.12.01 15:16:59 -0500  
Scott W. Peavler  
Florida P.E. No. 6566676  
September 1, 2023

PROJECT NO.  
18-0043-001-01

HP-1  
SHEET 1 OF 8

						TODAY'S
						SEE SHEET
						NOP
						DESIGN BY
						NOP
						DRAWN BY
						NOP
						CHECKED BY
						SMP
						APPROVED BY
						SMP

**CRAVEN • THOMPSON AND ASSOCIATES, INC.**  
**ENGINEERS • PLANNERS • SURVEYORS**

3583 N.W. 53RD STREET, FORT LAUDERDALE, FLORIDA 33309  
TEL: (904) 739-8409 FAX: (904) 739-8409

FLORIDA LICENSED ENGINEERING, SURVEYING & MAPPING BUSINESS NO. 271  
FLORIDA LICENSED LANDSCAPE ARCHITECTURE BUSINESS NO. C200714

 **CRAVEN • THOMPSON AND ASSOCIATES, INC.**  
1000 N.W. 10TH AVENUE, SUITE 200, FORT LAUDERDALE, FLORIDA 33311  
TEL: (904) 739-8409 FAX: (904) 739-8409

INDIAN CREEK GREENWAY  
PREPARED FOR  
CITY OF MIAMI BEACH  
HARDSCAPE PLAN

Scott  
Wade  
Peavler

Digitally signed by  
Scott Wade Peavler  
Date: 2023.13.01  
15:19:26 -05'00'

---

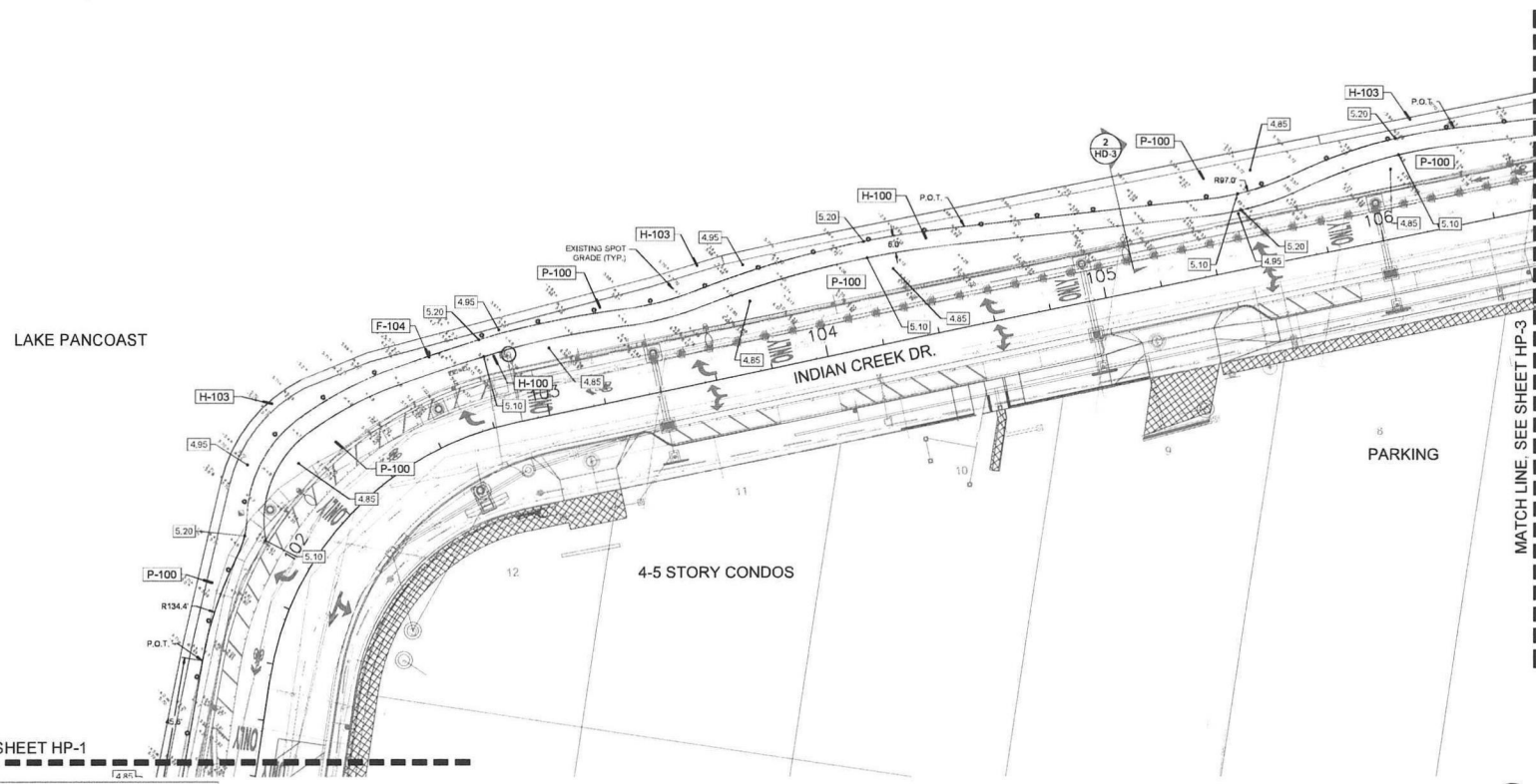
Scott W. Peavler  
Florida R.L.A. No. 6665676  
September 1, 2023

**PROJECT NO.**

**18-0043-001-01**

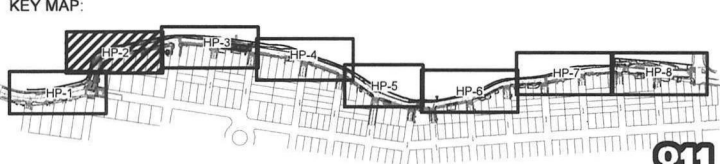
**HP-2**

**SHEET** 2 **OF** 8



REFERENCE NOTES SCHEDULE			
Site Furnishings			
SYMBOL	DESCRIPTION	QTY	Detail
[H-101]	Recycling Receptacle	1	3H-D-2
[H-102]	Trash Receptacle	2	3H-D-2
[F-103]	Round Concrete Bench	10	3H-D-1
[H-104]	Bollard Light	126	3H-D-2
Hardscape			
SYMBOL	DESCRIPTION	QTY	Detail
[H-100]	Concrete Path	11,919 sf	1H-D-1
[H-101]	Concrete Sidewalk	N/A	Existing
[H-102]	Barrier Wall	N/A	Existing
[H-103]	Sea Wall	N/A	See Engineer Plans
[H-104]	Concrete Pad for Bench & Receptacle	13	4H-D-1
Planter Area			
SYMBOL	DESCRIPTION	QTY	Detail
[P-105]	Planter Area	N/A	See Landscape Plan

- PATH MUST BE IN CONFORMANCE WITH MOST CURRENT AMERICAN WITH DISABILITIES ACT STANDARDS AND REGULATIONS FOR ACCESSIBLE DESIGN. PATH SHALL NOT EXCEED 5% RUNNING SLOPE OR 2% CROSS-SLOPE AT ANY TIME.
- CONTRACTOR MUST FIELD VERIFY EXISTING AND PROPOSED CONDITIONS AND SUBMIT GRADING PLAN/LAYOUT FOR REVIEW AND APPROVAL PRIOR TO ANY MODIFICATIONS OF ANY EXISTING SITE FEATURES, INCLUDING, BUT NOT LIMITED TO BARRIER WALLS, CONCRETE LANDINGS, RIM ELEVATIONS, CURBING, ETC.
- REFER TO SURVEY PLANS FOR SEAWALL PROJECT FOR TOP OF WALL CAP ELEVATIONS.



**811.**  
Know what's below.  
Call before you dig.

[illegible]

Scott Wade Peavler

Digitally signed by Scott Wade Peavler  
Date: 2023.12.01 15:19:52 -05'00'

Scott W. Peavler  
Florida R.L.A. No. 6665876  
September 1, 2023

PROJECT NO.  
18-0043-001-01

HP-3  
SHEET 3 OF 8

NOTES:

- PATH MUST BE IN CONFORMANCE WITH MOST CURRENT AMERICAN WITH DISABILITIES ACT STANDARDS AND REGULATION FOR ACCESSIBLE DESIGN. PATH SHALL NOT EXCEED 5% RUNNING SLOPE OR 2% CROSS-SLOPE AT ANY TIME.
- CONTRACTOR MUST FIELD VERIFY EXISTING AND PROPOSED CONDITIONS AND SUBMIT GRADING PLAN/LAYOUT FOR REVIEW AND APPROVAL PRIOR TO ANY MODIFICATIONS OF ANY EXISTING SITE FEATURES, INCLUDING, BUT NOT LIMITED TO, BARRIER WALLS, CONCRETE FENCINGS, RIM ELEVATIONS, CURBS, ETC.
- REFER TO SURVEY PLANS FOR SEAWALL PROJECTIONS FOR TOP OF WALL CAP ELEVATIONS.

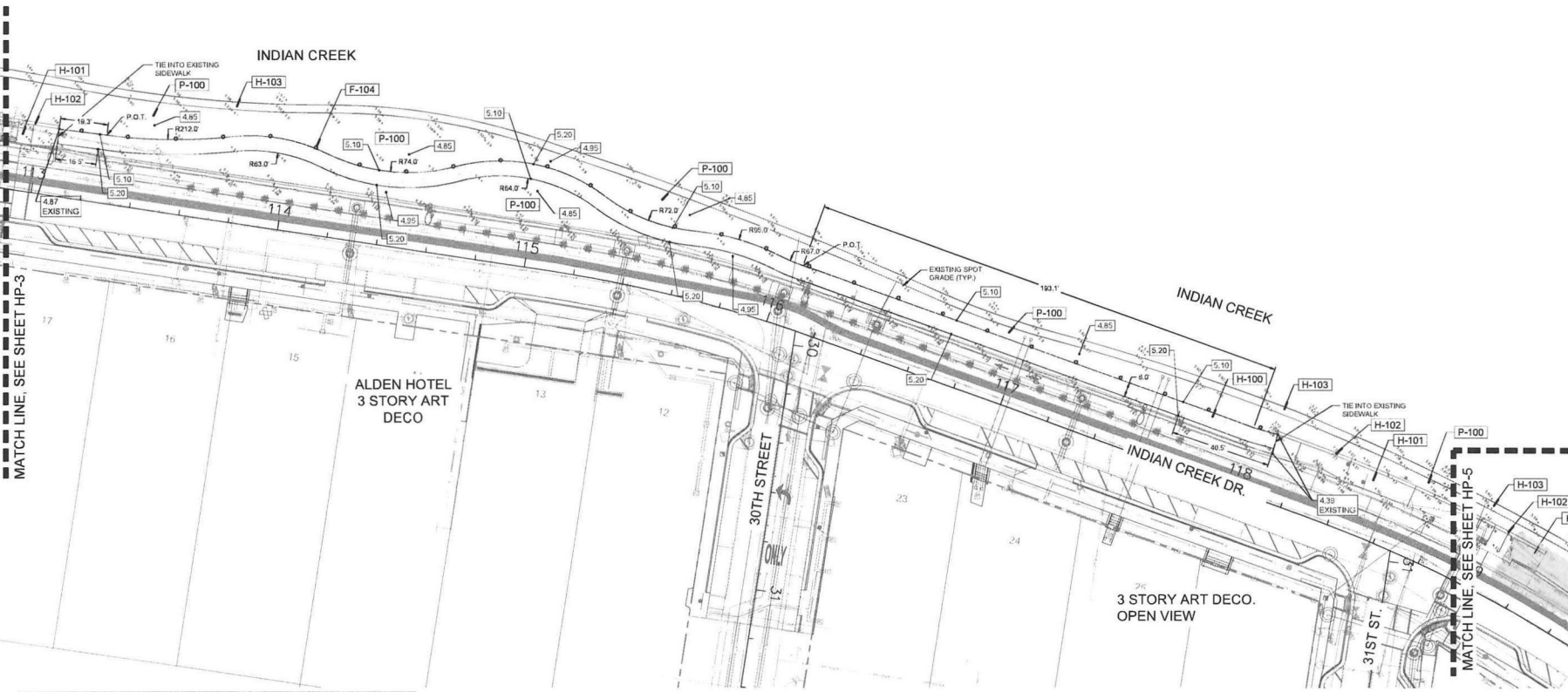
ALL PROPOSED AND EXISTING  
ELEVATIONS ARE SHOWN IN  
N.A.V.D. 1988 DATUM.

DATE	SCALE	DESIGNED BY	CHECKED BY	APPROVED BY

GRAVEN - THOMPSON AND ASSOCIATES, INC.  
ENGINEERS • PLANNERS • SURVEYORS  
3865 N.W. 10TH STREET, SUITE 200  
FORT LAUDERDALE, FL 33309  
TEL: 954.333.3309  
FAX: 954.333.3309  
FLORIDA LICENSED ENGINEER, SURVEYOR & LANDSCAPE ARCHITECT NO. 271  
FLORIDA LICENSED LANDSCAPE ARCHITECT NO. 271  
FLORIDA LICENSED LANDSCAPE ARCHITECT NO. 271

INDIAN CREEK GREENWAY  
PREPARED FOR  
CITY OF MIAMI BEACH  
HARDSCAPE PLAN

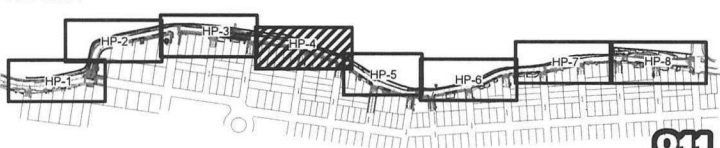
Scott Wade Peavler  
Digitally signed by Scott Wade Peavler  
Date: 2023.12.01  
15:20:13 -0500  
Scott W. Peavler  
Florida P.L.A. No. 65588796  
September 1, 2023  
PROJECT NO.  
18-0043-001-01  
HP-4  
SHEET 4 OF 8



REFERENCE NOTES SCHEDULE			
Site Furnishings			
SYMBOL	DESCRIPTION	QTY	Detail
[F-101]	Recycling Receptacle	1	18HD-2
[F-102]	Trash Receptacle	2	18HD-2
[F-103]	Round Concrete Bench	10	3HD-1
[F-104]	Bollard Light	126	3HD-2
Hardscape			
SYMBOL	DESCRIPTION	QTY	Detail
[H-101]	Concrete Path	11,916 sf	18HD-1
[H-102]	Concrete Sidewalk	N/A	Existing
[H-103]	Barrier Wall	N/A	Existing
[H-104]	Sea Wall	N/A	See Engineer Plans
[H-105]	Concrete Pad for Bench & Receptacle	13	4HD-1
Planter Area			
SYMBOL	DESCRIPTION	QTY	Detail
[P-100]	Planter Area	N/A	See Landscape Plan

NOTES:  
• PATH MUST BE IN CONFORMANCE WITH MOST CURRENT AMERICAN WITH DISABILITIES ACT STANDARDS AND REGULATIONS FOR ACCESSIBLE DESIGN. PATH SHALL NOT EXCEED 5% RUNNING SLOPE OR 2% CROSS-SLOPE AT ANY TIME.  
• CONTRACTOR MUST FIELD VERIFY EXISTING AND PROPOSED CONDITIONS AND SUBMIT GRADING PLAN LAYOUT FOR REVIEW AND APPROVAL PRIOR TO ANY MODIFICATIONS OF ANY EXISTING SITE FEATURES, INCLUDING, BUT NOT LIMITED TO BARRIER WALLS, CONCRETE LANDINGS, RM ELEVATIONS, CURBING, ETC.  
• REFER TO SURVEY PLANS FOR SEAWALL PROJECT FOR TOP OF WALL CAP ELEVATIONS.

KEY MAP:





[illegible]

NOTES

- PATH MUST BE IN CONFORMANCE WITH MOST CURRENT AMERICAN WITH DISABILITIES ACT STANDARDS AND REGULATION FOR ACCESSIBLE DESIGN. PATH SHALL NOT EXCEED 5% RUNNING SLOPE OR 2% CROSS-SLOPE AT ANY TIME.
- CONTRACTOR MUST FIELD VERIFY EXISTING AND PROPOSED CONDITIONS AND SUBMIT GRADING PLAN, RAYOUT FOR REVIEW AND APPROVAL PRIOR TO ANY MODIFICATIONS OF ANY EXISTING SITE FEATURES, INCLUDING, BUT NOT LIMITED TO BARRIER WALLS, CONCRETE LANDINGS, RIM ELEVATIONS, CURBING, ETC.
- REFER TO SURVEY PLANS FOR SEAWALL PROJECT FOR TOP OF WALL CAP ELEVATIONS.



INDIAN CREEK GREENWAY  
PREPARED FOR  
CITY OF MIAMI BEACH  
HARDSCAPE PLAN

Digitally signed  
by Scott Wade  
Peavler  
Date: 2023.12.01  
15 20:34 -0500

---

Scott W. Peavler  
Florida R.L.A. No. 6665676  
September 1, 2023

---

PROJECT NO.  
18-0043-001-01

---

HP-5

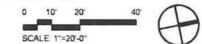
---

SHEET 5 OF 9

[illegible]

INDIAN CREEK GREENWAY  
PREPARED FOR  
CITY OF MIAMI BEACH  
HARDSCAPE PLAN

HP-6  
SHEET 6 OF 9



NOTES:

- \* PATH MUST BE IN CONFORMANCE WITH MOST CURRENT AMERICAN WITH DISABILITIES ACT STANDARDS AND REGULATIONS FOR ACCESSIBLE DESIGN. PATH SHALL NOT EXCEED 5% RUNNING SLOPE OR 2% CROSS-SLOPE AT ANY TIME.
- \* CONTRACTOR MUST FIELD VERIFY EXISTING AND PROPOSED CONDITIONS AND SUBMIT A DESIGN PLAN, PERMIT FOR REVIEW AND APPROVAL, PRIOR TO ANY MODIFICATIONS OF ANY EXISTING SITE FEATURES, INCLUDING, BUT NOT LIMITED TO, BARRIER WALLS, CONCRETE LANDINGS, RIM ELEVATIONS, CURBING, ETC.
- \* REFER TO SURVEY PLANS FOR SEAWALL PROJECTIONS FOR TOP OF WALL CAP ELEVATIONS.



ALL PROPOSED AND EXISTING  
ELEVATIONS ARE SHOWN IN  
N.A.V.D. 1985 DATUM.

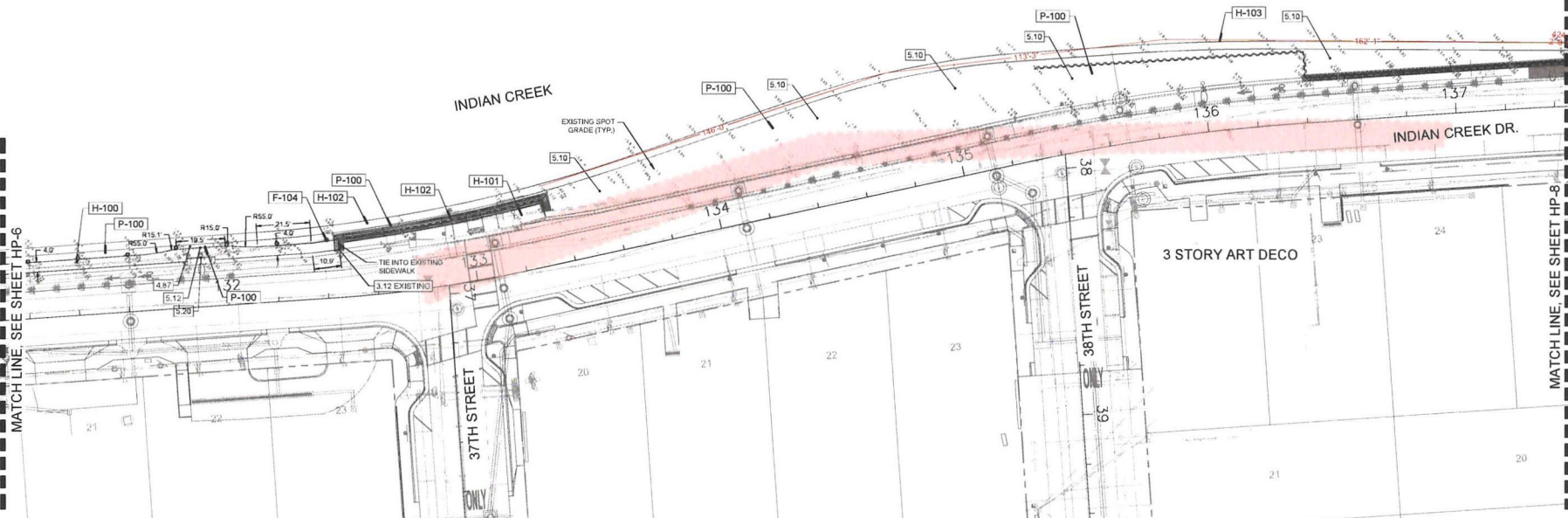
DATE	SCALE	DESIGN BY	CHECKED BY	APPROVED BY
12/06/18				
12/06/18				
12/06/18				
12/06/18				
12/06/18				

CRAVEN • THOMPSON AND ASSOCIATES, INC.  
ENGINEERS • PLANNERS • SURVEYORS  
2550 N.W. 107th Avenue, Suite 200, Fort Lauderdale, FL 33309  
P.O. Box 10700, Fort Lauderdale, FL 33309  
FLORIDA LICENSED ENGINEERING, PLANNING & SURVEYING No. 271  
FLORIDA LICENSED LANDSCAPE ARCHITECTURE No. 100014  
Scott W. Peavler, P.E., P.L.A., No. 6668976  
September 1, 2023

INDIAN CREEK GREENWAY  
REPAIRED OR  
CITY OF MIAMI BEACH  
HARDSCAPE PLAN

Scott W. Peavler  
152121-0302  
PROJECT NO.  
18-0043-001-01

HP-7  
SHEET 7 OF 9

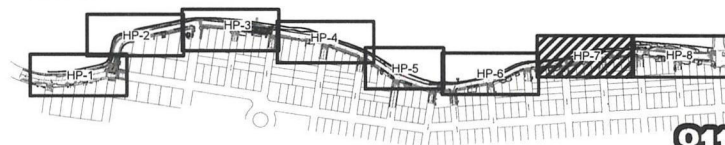


#### REFERENCE NOTES SCHEDULE

SYMBOL	DESCRIPTION	QTY	Detail
[F-101]	Recycling Receptacle	1	1H-D-2
[F-102]	Trash Receptacle	2	1H-D-2
[F-103]	Round Concrete Bench	10	3H-D-1
[F-104]	Bollard Light	126	3H-D-2
SYMBOL	DESCRIPTION	QTY	Detail
[H-100]	Concrete Path	11,918 sf	1H-D-1
[H-101]	Concrete Sidewalk	N/A	Existing
[H-102]	Barrier Wall	N/A	Existing
[H-103]	Sea Wall	N/A	See Engineer Plans
[H-104]	Concrete Pad for Bench & Receptacle	13	4H-D-1
SYMBOL	DESCRIPTION	QTY	Detail
[P-100]	Planter Area	N/A	See Landscape Plan

- NOTES
- PATH MUST BE IN CONFORMANCE WITH MOST CURRENT AMERICAN WITH DISABILITIES ACT STANDARDS AND REGULATIONS FOR ACCESSIBLE DESIGN. PATH SHALL NOT EXCEED 5% RUNNING SLOPE OR 2% CROSS-SLOPE AT ANY TIME.
  - CONTRACTOR MUST FIELD VERIFY EXISTING AND PROPOSED CONDITIONS AND SUBMIT GRADING PLAN LAYOUT FOR REVIEW AND APPROVAL PRIOR TO ANY MODIFICATIONS OF ANY EXISTING SITE FEATURES, INCLUDING, BUT NOT LIMITED TO, BARRIER WALLS, CONCRETE LANDINGS, RIM ELEVATIONS, CURBING, ETC.
  - REFER TO SURVEY PLANS FOR SEAWALL PROJECT FOR TOP OF WALL CAP ELEVATIONS.

#### KEY MAP:

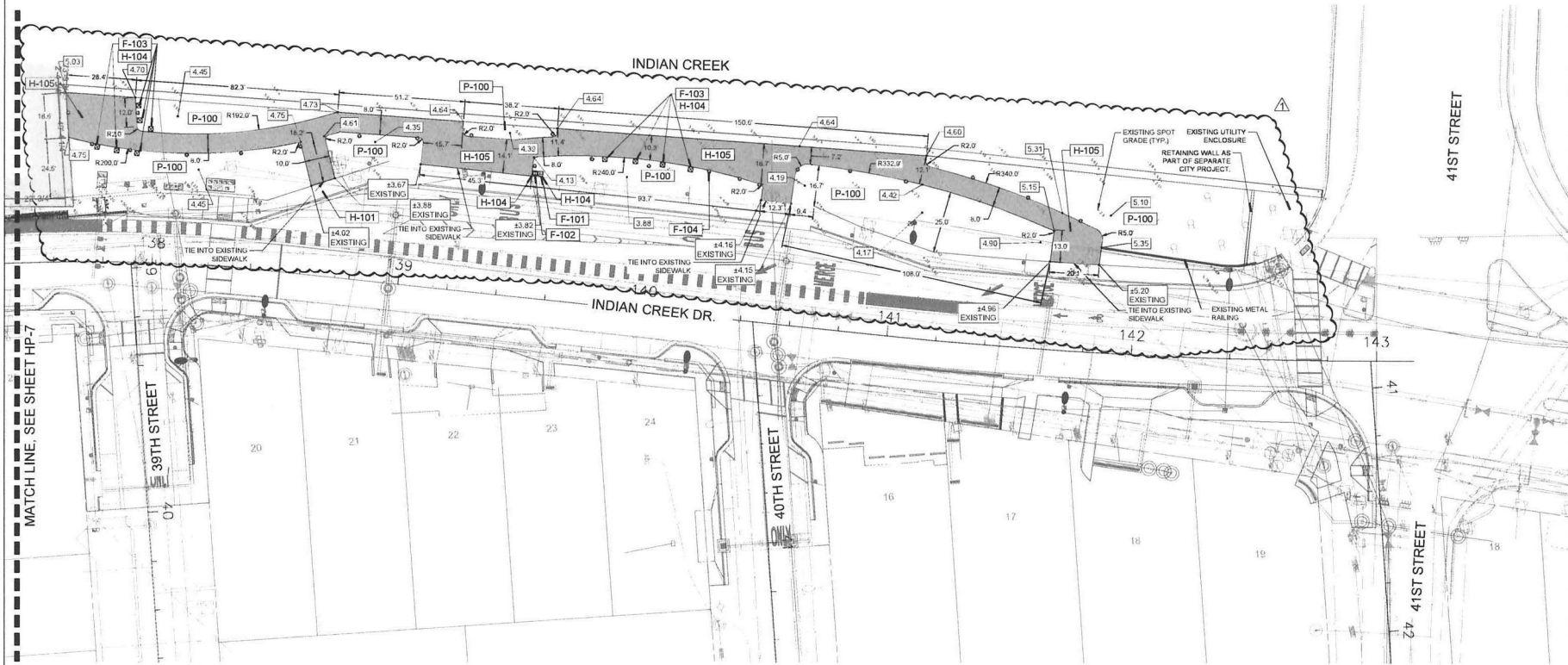


811

Know what's below.  
Call before you dig.



ALL PROPOSED AND EXISTING  
ELEVATIONS ARE SHOWN IN  
N.A.V.D. 1988 DATUM.

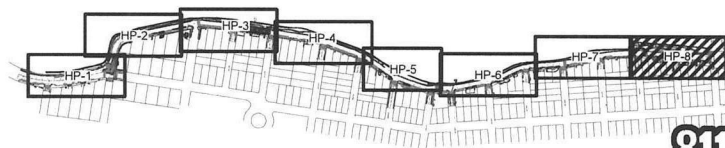


# REFERENCE NOTES SCHEDULE

SYMBOL	DESCRIPTION	QTY	Detail
[F-101]	Recycling Receptacle	1	1H-D-2
[F-102]	Trash Receptacle	2	1H-D-2
[F-103]	Round Concrete Bench	10	3H-D-1
[F-104]	Bollard Light	126	3H-D-2
SYMBOL	DESCRIPTION	QTY	Detail
[H-100]	Concrete Path	11,919 sf	1H-D-1
[H-101]	Concrete Sidewalk	N/A	Existing
[H-102]	Barrier Wall	N/A	Existing
[H-103]	Sea Wall	N/A	See Engineer Plans
[H-104]	Concrete Pathway, Bench & Receptacle	1	3H-D-1
[H-105]	Mural Bench, Red Concrete	1,087 sf	3H-D-1
SYMBOL	DESCRIPTION	QTY	Detail
[P-100]	Planter Area	N/A	See Landscape Plan

- NOTES:
- PATH MUST BE IN CONFORMANCE WITH MOST CURRENT AMERICAN WITH DISABILITIES ACT STANDARDS AND REGULATIONS FOR ACCESSIBLE DESIGN. PATH SHALL NOT EXCEED 3% RUNNING SLOPE OR 2% CROSS-SLOPE AT ANY TIME.
  - CONTRACTOR MUST FIELD VERIFY EXISTING AND PROPOSED CONDITIONS AND SUBMIT GRADING PLAN/PAVEMENT FOR REVIEW AND APPROVAL PRIOR TO ANY MODIFICATIONS OF ANY EXISTING SITE FEATURES, INCLUDING, BUT NOT LIMITED TO BARRIER WALLS, CONCRETE LANDINGS, RIM ELEVATIONS, CURBING, ETC.
  - REFER TO SURVEY PLANS FOR SEAWALL PROJECT FOR TOP OF WALL CAP ELEVATIONS.

## KEY MAP:



DATE	1/28/23
DESIGNED BY	NDP
DRAWN BY	NDP
CHECKED BY	NDP
APPROVED BY	NDP

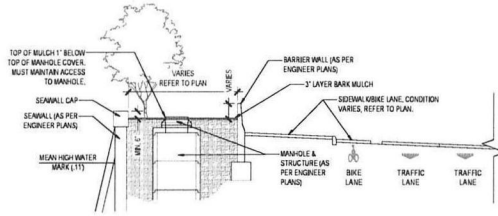
GRAVEN - THOMPSON AND ASSOCIATES, INC.  
ENGINEERS • PLANNERS • SURVEYORS  
3861 N.W. 11TH AVENUE, SUITE 200  
MIAMI, FL 33150  
TEL: (305) 750-1400  
FAX: (305) 750-1400  
FLORIDA LICENSED ENGINEERING, PLANNING & SURVEYING NO. 271  
FLORIDA LICENSED LANDSCAPE ARCHITECTURE NO. 12001A  
12/21/2022  
DATE

INDIAN CREEK GREENWAY  
HARDSCAPE PLAN  
CITY OF MIAMI BEACH

Scott Wade Peavler  
Digitally signed by Scott Wade Peavler  
Date: 2023.12.01 15:21:45 -0500  
Scott W. Peavler  
Florida R.L.A. No. 56568/76  
December 1, 2023  
PROJECT NO.  
18-0043-001-01

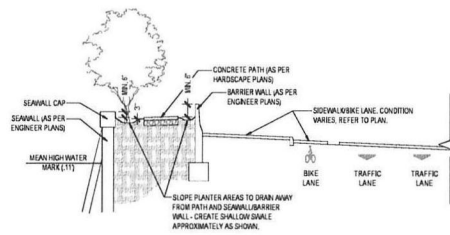
HP-8  
SHEET 8 OF 9





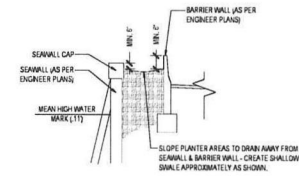
1 SECTION A - TYPICAL CONDITION AT MANHOLE  
SECTION

NTS



2 SECTION B - TYPICAL PATH CONDITION  
SECTION

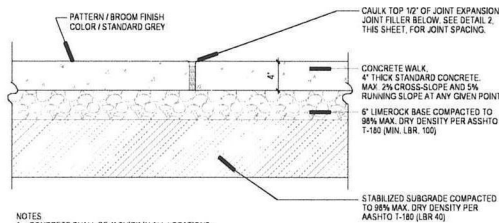
NTS



### 3 SECTION C - TYPICAL PLANTER ONLY CONDITION

NTS

[illegible]

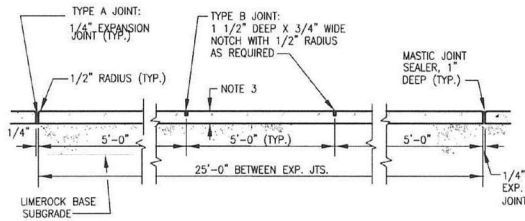


- NOTES
1. CONCRETE SHALL BE 4" THICK IN ALL LOCATIONS.
  2. SUBGRADE BELOW CONCRETE SHALL BE A MIN. L.B.R. 40 COMPACTED TO 98% OF MAX. DENSITY PER A.A.S.H.T.O. T-180.
  3. CONCRETE STRENGTH SHALL BE MIN. 3000 PSI @ 28 DAYS.
  4. CROSS-SLOPE SHALL BE 2% MAX. AT ANY POINT. SIDEWALK RUNNING SLOPE SHALL BE 5% MAX. AND SHALL MEET THE REQUIREMENTS OF THE "AMERICANS WITH DISABILITIES ACT", LATEST REVISION.
  5. FINISH CONCRETE SHALL MEET OR EXCEED REQUIRED SLIP COEFFICIENT FOR OUTDOOR SURFACES.

### 1 CONCRETE PATH DETAIL

DETAIL NTS

SIDEWALK JOINTS	
TYPE	LOCATION
"A"	P.C. P.T. OF CURVES
"B"	5'-0" CENTER TO CENTER ON SIDEWALKS



### 2 CONCRETE PATH JOINT DETAIL

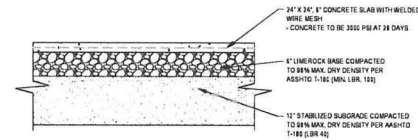
DETAIL NTS

1. MANUFACTURER: WAUSAU TILE, INC. TROY, OHIO (813) 334-0016 WWW.WAUSAUTILE.COM (OR APPROVED EQUAL)
2. MODEL: TF3526
3. COLOR: A21 (BUFF)
4. SIZE: 26" DIA. (ROUND)
5. INSTALLATION: INSTALL ON 2X2 SQUARE CONCRETE PAD IN LOCATIONS SHOWN ON PLANS USING PROVIDED ANCHORING INSERTS.
6. QUANTITY: 15
7. CONTRACTOR TO SUBMIT CUT SHEET INCLUDING COLOR SAMPLE FOR REVIEW AND APPROVAL.



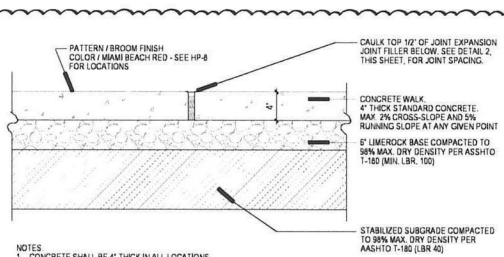
### 3 ROUND CONCRETE BENCH

DETAIL NTS



### 4 CONCRETE PAD - BENCHES & RECEPTACLES

DETAIL NTS



- NOTES
1. CONCRETE SHALL BE 4" THICK IN ALL LOCATIONS.
  2. SUBGRADE BELOW CONCRETE SHALL BE A MIN. L.B.R. 40 COMPACTED TO 98% OF MAX. DENSITY PER A.A.S.H.T.O. T-180.
  3. CONCRETE STRENGTH SHALL BE MIN. 3000 PSI @ 28 DAYS.
  4. CROSS-SLOPE SHALL BE 2% MAX. AT ANY POINT. SIDEWALK RUNNING SLOPE SHALL BE 5% MAX. AND SHALL MEET THE REQUIREMENTS OF THE "AMERICANS WITH DISABILITIES ACT", LATEST REVISION.
  5. FINISH CONCRETE SHALL MEET OR EXCEED REQUIRED SLIP COEFFICIENT FOR OUTDOOR SURFACES.

### 5 CONCRETE PATH DETAIL

DETAIL NTS

DATE	1/26/23
SCALE	
DESIGN BY	NCP
DRAWN BY	NCP
CHECKED BY	NCP
APPROVED BY	NCP
DATE	1/26/23
BY	NCP
DESCRIPTION	SEE SHEET & SUBSTITUTIONS

CRAVEN + THOMPSON AND ASSOCIATES, INC.  
ENGINEERS + PLANNERS + SURVEYORS  
2500 N.W. 107th Avenue, Suite 100  
Tampa, FL 33613  
TEL: (813) 738-4400  
FAX: (813) 738-4400  
FLORIDA LICENSED ENGINEERING, PLANNING & SURVEYING NO. 271  
FLORIDA LICENSED LANDSCAPE ARCHITECTURE NO. 000014  
15000 E. US HWY 1, Suite 200, Fort Lauderdale, FL 33304  
15000 E. US HWY 1, Suite 200, Fort Lauderdale, FL 33304

INDIAN CREEK GREENWAY  
HARDSCAPE  
CITY OF MIAMI BEACH  
HARDSCAPE DETAILS

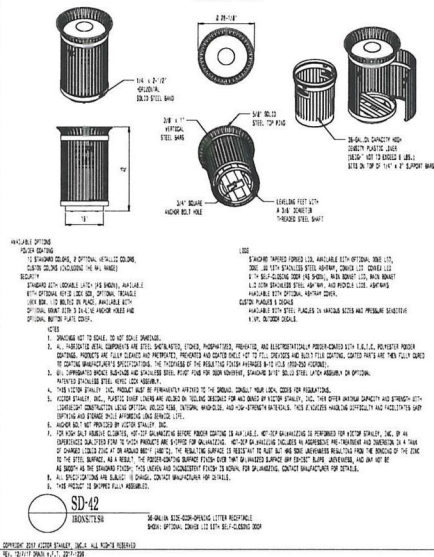
Scott Wade Peavler  
Digitally signed by Scott Wade Peavler  
Date: 2023.12.01 15:24:58 -05'00'  
Scott W. Peavler  
Florida P.E. No. 56568/76  
December 1, 2023  
PROJECT NO.  
18-0043-001-01



Know what's below.  
Call before you dig.

HD-1  
SHEET 1 OF 2

# **VICTOR STANLEY** Create a timeless moment.



1. MANUFACTURER  
VICTOR STANLEY  
WWW.VICTORSTANLEY.COM  
(OR APPROVED EQUAL)
2. REPRESENTATIVE  
BECKY MCNAMARA  
(800) 368-2572 X 375  
BECKY@VICTORSTANLEY.COM
3. MODEL SD-42
4. COLOR GREEN
5. WASTE & RECYCLING  
COORDINATE WITH CITY FOR  
PROPER RECEPTACLE DECALS  
AND COLORS
6. CONTRACTOR TO PROVIDE SHOP  
DRAWINGS INCLUDING 2X2  
CONCRETE PAD, FOR REVIEW  
AND APPROVAL PRIOR TO  
CONSTRUCTION

# Submitting Agency: **SESCO**

CO42-18LED01-10W-VOLT-L3FL-30K-HSS-SGP-2  
(VOLT)  
CITY OF MIAMI BEACH - INDIAN CREEK GREENWAY  
MODIFIED TO 100W

# **CITI® & COSMO®**



Distributions		
Type I L1	Type II L2	Type III L3
Type IV L4	Type V L5	Type VI L6
CCT		
3000K	4000K	CRI 90
Characteristics		
Type I (L1) 10W		
Type II (L2) 10W		
Type III (L3) 10W		
Type IV (L4) 10W		
Type V (L5) 10W		
Type VI (L6) 10W		
Type VII (L7) 10W		
Type VIII (L8) 10W		
Type IX (L9) 10W		
Type X (L10) 10W		
Type XI (L11) 10W		
Type XII (L12) 10W		
Type XIII (L13) 10W		
Type XIV (L14) 10W		
Type XV (L15) 10W		
Type XVI (L16) 10W		
Type XVII (L17) 10W		
Type XVIII (L18) 10W		
Type XIX (L19) 10W		
Type XX (L20) 10W		
Type XXI (L21) 10W		
Type XXII (L22) 10W		
Type XXIII (L23) 10W		
Type XXIV (L24) 10W		
Type XXV (L25) 10W		
Type XXVI (L26) 10W		
Type XXVII (L27) 10W		
Type XXVIII (L28) 10W		
Type XXIX (L29) 10W		
Type XXX (L30) 10W		



# **BOLLARD** MANUFACTURER'S DETAIL

NTS

Product code	Source	Voltage	Distribution	CET	Options	Color	Anchor bolts
18LED01	18LED01	120V	L1	SD	18LED01	18LED01	18LED01
18LED02	18LED02	120V	L2	SD	18LED02	18LED02	18LED02
18LED03	18LED03	120V	L3	SD	18LED03	18LED03	18LED03
18LED04	18LED04	120V	L4	SD	18LED04	18LED04	18LED04
18LED05	18LED05	120V	L5	SD	18LED05	18LED05	18LED05
18LED06	18LED06	120V	L6	SD	18LED06	18LED06	18LED06
18LED07	18LED07	120V	L7	SD	18LED07	18LED07	18LED07
18LED08	18LED08	120V	L8	SD	18LED08	18LED08	18LED08
18LED09	18LED09	120V	L9	SD	18LED09	18LED09	18LED09
18LED10	18LED10	120V	L10	SD	18LED10	18LED10	18LED10
18LED11	18LED11	120V	L11	SD	18LED11	18LED11	18LED11
18LED12	18LED12	120V	L12	SD	18LED12	18LED12	18LED12
18LED13	18LED13	120V	L13	SD	18LED13	18LED13	18LED13
18LED14	18LED14	120V	L14	SD	18LED14	18LED14	18LED14
18LED15	18LED15	120V	L15	SD	18LED15	18LED15	18LED15
18LED16	18LED16	120V	L16	SD	18LED16	18LED16	18LED16
18LED17	18LED17	120V	L17	SD	18LED17	18LED17	18LED17
18LED18	18LED18	120V	L18	SD	18LED18	18LED18	18LED18
18LED19	18LED19	120V	L19	SD	18LED19	18LED19	18LED19
18LED20	18LED20	120V	L20	SD	18LED20	18LED20	18LED20
18LED21	18LED21	120V	L21	SD	18LED21	18LED21	18LED21
18LED22	18LED22	120V	L22	SD	18LED22	18LED22	18LED22
18LED23	18LED23	120V	L23	SD	18LED23	18LED23	18LED23
18LED24	18LED24	120V	L24	SD	18LED24	18LED24	18LED24
18LED25	18LED25	120V	L25	SD	18LED25	18LED25	18LED25
18LED26	18LED26	120V	L26	SD	18LED26	18LED26	18LED26
18LED27	18LED27	120V	L27	SD	18LED27	18LED27	18LED27
18LED28	18LED28	120V	L28	SD	18LED28	18LED28	18LED28
18LED29	18LED29	120V	L29	SD	18LED29	18LED29	18LED29
18LED30	18LED30	120V	L30	SD	18LED30	18LED30	18LED30

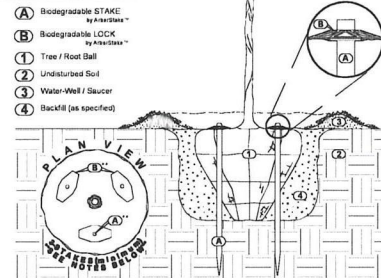
House side shield	Surge protector	Programmable driver	Photocell
18LED01	18LED01	18LED01	18LED01
18LED02	18LED02	18LED02	18LED02
18LED03	18LED03	18LED03	18LED03
18LED04	18LED04	18LED04	18LED04
18LED05	18LED05	18LED05	18LED05
18LED06	18LED06	18LED06	18LED06
18LED07	18LED07	18LED07	18LED07
18LED08	18LED08	18LED08	18LED08
18LED09	18LED09	18LED09	18LED09
18LED10	18LED10	18LED10	18LED10
18LED11	18LED11	18LED11	18LED11
18LED12	18LED12	18LED12	18LED12
18LED13	18LED13	18LED13	18LED13
18LED14	18LED14	18LED14	18LED14
18LED15	18LED15	18LED15	18LED15
18LED16	18LED16	18LED16	18LED16
18LED17	18LED17	18LED17	18LED17
18LED18	18LED18	18LED18	18LED18
18LED19	18LED19	18LED19	18LED19
18LED20	18LED20	18LED20	18LED20
18LED21	18LED21	18LED21	18LED21
18LED22	18LED22	18LED22	18LED22
18LED23	18LED23	18LED23	18LED23
18LED24	18LED24	18LED24	18LED24
18LED25	18LED25	18LED25	18LED25
18LED26	18LED26	18LED26	18LED26
18LED27	18LED27	18LED27	18LED27
18LED28	18LED28	18LED28	18LED28
18LED29	18LED29	18LED29	18LED29
18LED30	18LED30	18LED30	18LED30

1. MANUFACTURER  
LUMICA (OR APPROVED EQUAL)
2. REPRESENTATIVE  
JASON BOCHAM  
SESCO LIGHTING  
(800) 474-8888 (MAIN)  
(302) 268-2288 (CELL)  
WWW.SESCOLIGHTING.COM
3. MODEL COSMO (C040)
4. COLOR SD (STEEL DARK)
5. CONTRACTOR TO PROVIDE SHOP DRAWINGS INCLUDING COLOR  
SAMPLE, FOR REVIEW AND APPROVAL PRIOR TO CONSTRUCTION

# **TRASH & RECYCLE RECEPTACLES** MANUFACTURER'S DETAIL

NTS

1. MANUFACTURER  
ARBOR STAKES  
(714) 810-6879  
WWW.ARBORSTAKES.COM  
(OR APPROVED EQUAL)
2. QUANTITY PER TREE: 3 MIN. + 1  
STAKE FOR EVERY 1" CAL. MORE  
THAN 3" FOR 5" CAL. TREE (GUSSET  
STAKES)
3. CONTRACTOR TO PROVIDE SHOP  
DRAWINGS INCLUDING FOOTING  
REQUIREMENTS AS PER  
CURRENT FLORIDA BUILDING  
CODE.



- NOTES:
- Minimum Stake Quantity is (3) - THEN - Add (1) Stake Per Caliper Inch Greater than 3"
  - Stakes Shall Be Driven THROUGH The Root Ball As Shown
  - Ensure Trunk Base (root flare) Is Free From Staking And Other Materials
  - Aboveground Guying and/or Metallic Staking Systems NOT Allowed And Shall Be Rejected
  - Install Staking System As Per Manufacturer's Instructions. [www.arborstakes.com](http://www.arborstakes.com)

# **TREE ANCHOR SYSTEM** MANUFACTURER DETAIL

NTS

12/06/18

DATE

SCALE

DESIGNED BY

DRAWN BY

CHECKED BY

APPROVED BY

DATE

SCALE

DESIGNED BY

DRAWN BY

CHECKED BY

APPROVED BY

INDIAN CREEK GREENWAY

PREPARED FOR

CITY OF MIAMI BEACH

HARDSCAPE DETAILS

Scott Wade Peavler

Digitally signed by Scott Wade Peavler

2023.12.01 15:25:33 -0500

PROJECT NO.

18-0043-001-01

HD-2

SHEET 2 OF 2