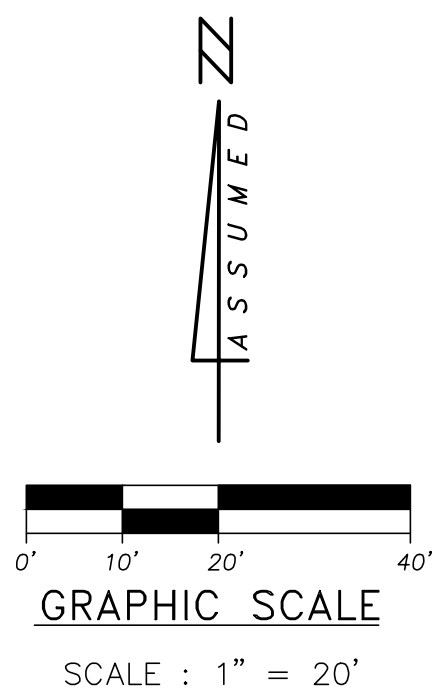
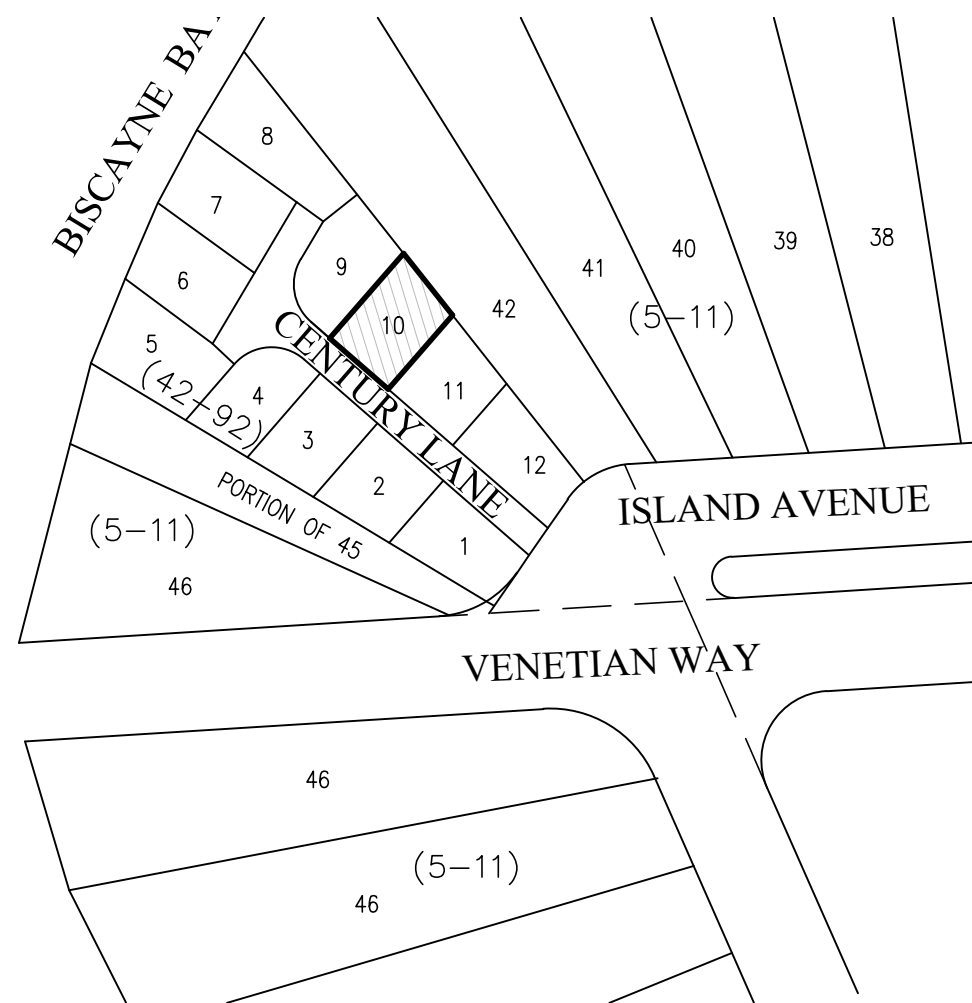
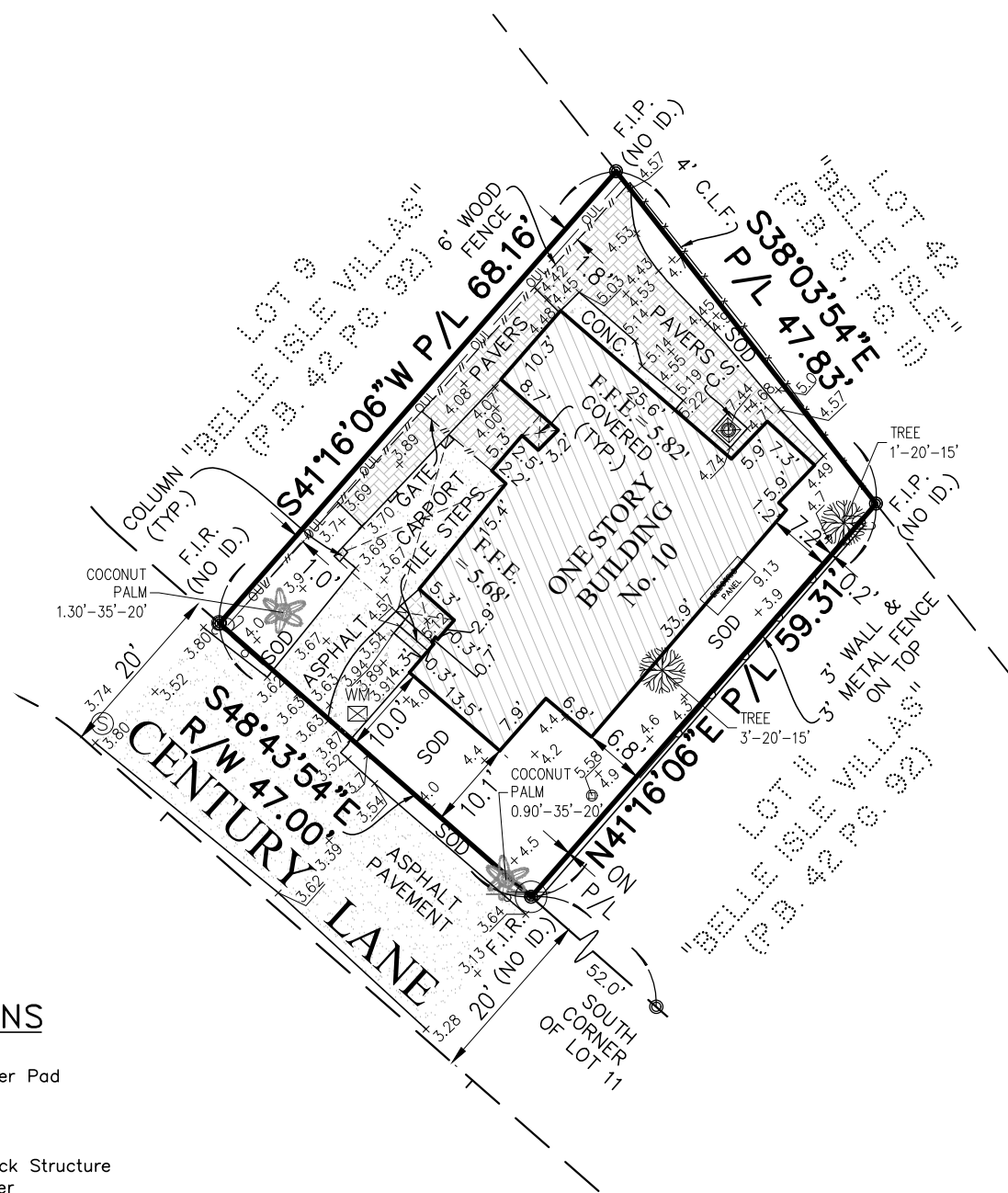


of  
10 CENTURY LANE, MIAMI BEACH  
MIAMI-DADE COUNTY, FLORIDA 33139  
for  
RAVDA ARCHITECTURAL DESIGN, PLLC



|                    |                          |
|--------------------|--------------------------|
|                    | Air Conditioner          |
|                    | Back Flow Preventer      |
|                    | Cable Television         |
|                    | Catch Basin              |
|                    | Chain Link Fence         |
|                    | Clean Out                |
|                    | Concrete Light Pole      |
|                    | Concrete Power Pole      |
|                    | Control Valve            |
|                    | C.B.S. Wall              |
| $\emptyset$        | Diameter                 |
| $1.5' - 15' - 10'$ | Diameter-Height-Spread   |
|                    | Drain                    |
|                    | Drainage Manhole         |
|                    | Electric Box             |
|                    | Electric Meter           |
|                    | Electric Motor           |
|                    | Electric Panel           |
|                    | Fire Hydrant             |
|                    | Flag                     |
|                    | Floor Lamp               |
|                    | Force Main Valve         |
|                    | Gas Valve                |
|                    | Grease Manhole           |
|                    | Guard Pole               |
|                    | Guy Wire                 |
|                    | Irrigation Control Valve |
|                    | Light Pole               |
|                    | Mail Box                 |
|                    | Metal Fence              |
|                    | Monitoring Well          |
|                    | Overhead Utility Lines   |
|                    | Parking Meter            |
|                    | Property Corner          |
|                    | Right-of-Way Lines       |
|                    | Sewer Manhole            |
|                    | Sewer Valve              |
|                    | Temporary Benchmark      |
|                    | Spot Elevation           |
|                    | Traffic Light            |
|                    | Traffic Sign             |
|                    | Telephone Booth          |
|                    | Telephone Box            |
|                    | Telephone Manhole        |
|                    | Unknown Manhole          |
|                    | Utility Power Pole       |
|                    | Valve (Unknown)          |
|                    | Water Manhole            |
|                    | Water Meter              |
|                    | Water Pump               |
|                    | Water Valve              |
|                    | Wood Fence               |

|        |                              |
|--------|------------------------------|
| A      | Arc Length                   |
| A/C    | Air Conditioner Pad          |
| ASPH.  | Asphalt                      |
| B.M.   | Benchmark                    |
| (C)    | Calculated                   |
| C.B.S. | Concrete Block Structure     |
| C.G.   | Curb & Gutter                |
| C/L    | Centerline                   |
| C.L.F. | Chain Link Fence             |
| CONC.  | Concrete                     |
| C.S.   | Concrete Slab                |
| (D)    | Deed                         |
| DWY.   | Driveway                     |
| E.O.W. | Edge of Water                |
| E.T.P. | Electric Transformer Pad     |
| F.F.E. | Finished Floor Elevation     |
| F.I.P. | Found Iron Pipe              |
| F.N.D. | Found Nail & Disc            |
| F.R.   | Found Rebar                  |
| ID.    | Identification               |
| INV.   | Inverts                      |
| L.F.E. | Lowest Floor Elevation       |
| (M)    | Measured                     |
| M.F.   | Metal Fence                  |
| M/L    | Monument Line                |
| P.B.   | Plot Book                    |
| C.C.P. | Permanent Control Point      |
| PG.    | Page                         |
| PL     | Planter                      |
| P/L    | Property Line                |
| P.O.B. | Point of Beginning           |
| P.O.C. | Point of Commencement        |
| P/S    | Parking Spaces               |
| (R)    | Recorded                     |
| P.R.M. | Permanent Reference Monument |
| R/W    | Right-of-Way Line            |
| SWK.   | Sidewalk                     |
| S.N.D. | Set Nail & Disc (LB 3398)    |
| S.R.   | Set Rebar (LB 3398)          |
| TYP.   | Typical                      |
| T.B.M. | Temporary Benchmark          |
| T.O.B. | Top of Bank                  |
| T.O.P. | Top of Pipe Elevation        |
| U.E.   | Utility Easement             |
| V.G.   | Valley Gutter                |
| W.E.   | Wire Elevation               |
| W.F.   | Wood Fence                   |



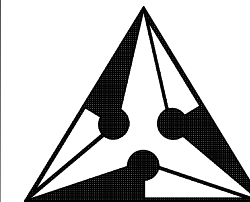
LOCATION SKETCH  
NOT TO SCALE

ORA JANNET SUAREZ  
LICENSE NUMBER  
No. 6781  
★  
STATE OF  
FLORIDA  
PROFESSIONAL SURVEYOR & MAPPER

THIS DOCUMENT HAS BEEN DIGITALLY SIGNED AND SEALED BY ORIA JANNET SUAREZ, PSM ON THE DATE ADJACENT TO THE SEAL.

PRINTED COPIES OF THIS DOCUMENT ARE NOT CONSIDERED SIGNED AND SEALED AND THE SIGNATURE MUST BE VERIFIED ON ANY ELECTRONIC COPIES.

Not valid without the signature and the original raised seal of a Florida Licensed Surveyor and Mapper. Additions or deletions to survey maps or reports by other than the signing party or parties is prohibited without written consent of the signing party or parties.



**J. Bonfill & Associates, Inc.**  
REGISTERED LAND SURVEYORS & MAPPERS  
Florida Certificate of Authorization LB3398  
7100 S.W. 99th Avenue Suite 104  
Miami, Florida 33173 (305) 598-8383

**BOUNDARY SURVEY**  
of  
10 CENTURY LANE, MIAMI BEACH  
MIAMI-DADE COUNTY, FLORIDA 33139  
for  
PRAVDA ARCHITECTURAL DESIGN, PLLC

[illegible]

Project: 23-0157

Job: 23-0157

Date: 08-03-2023

Drawn: G.P., J.S., O.B.

Checked: J.S

Scale: AS SHOWN

Field Book: ON FILE

SHEET 1 OF 1

\* Tree types are determined to the best of our ability and should be confirmed by botanist or a trained specialist.