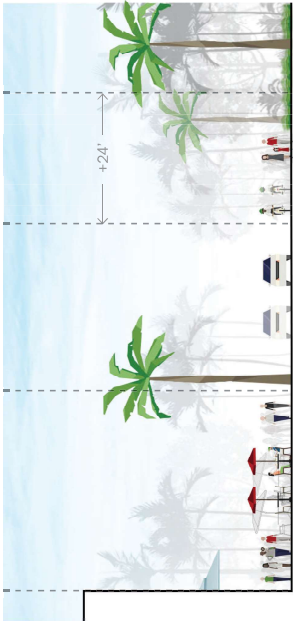


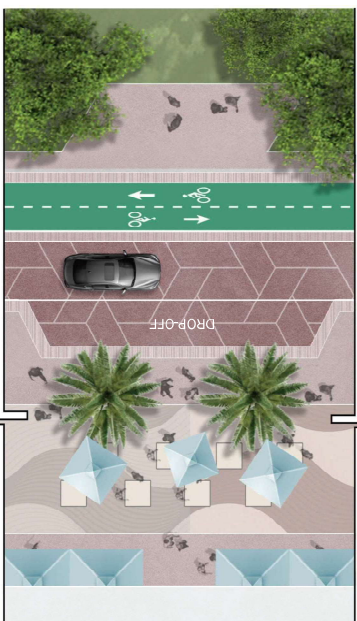
| OCEAN DRIVE CONCEPTS - OPTION 2

3.5.3 PROPOSED PARK + ONE WAY LIMITED ACCESS STREET



WALK	10'	SEATING	22'	PLANT	8'	CURB-SIDE	8'	AUTO	10'	BIKE	10'	WALK	15'	LUNNUS PARK
------	-----	---------	-----	-------	----	-----------	----	------	-----	------	-----	------	-----	-------------

86' ROW +/-



1 travel way southbound street	15%	15%	85%	76%
Curbside on west side	15%	15%	85%	76%
Two-way bikeway	15%	15%	85%	76%



This option is similar in character to option 1, but it proposes the narrow design shape for the pedestrian and bicycle paths. It also includes a dedicated space for the bicycle path. This street should be designed as an adjacent vehicle, emergency, emergency and emergency road. It is designed to be a dedicated space for the bicycle path. It is designed to be a dedicated space for the bicycle path. It is designed to be a dedicated space for the bicycle path.



Exhibit B