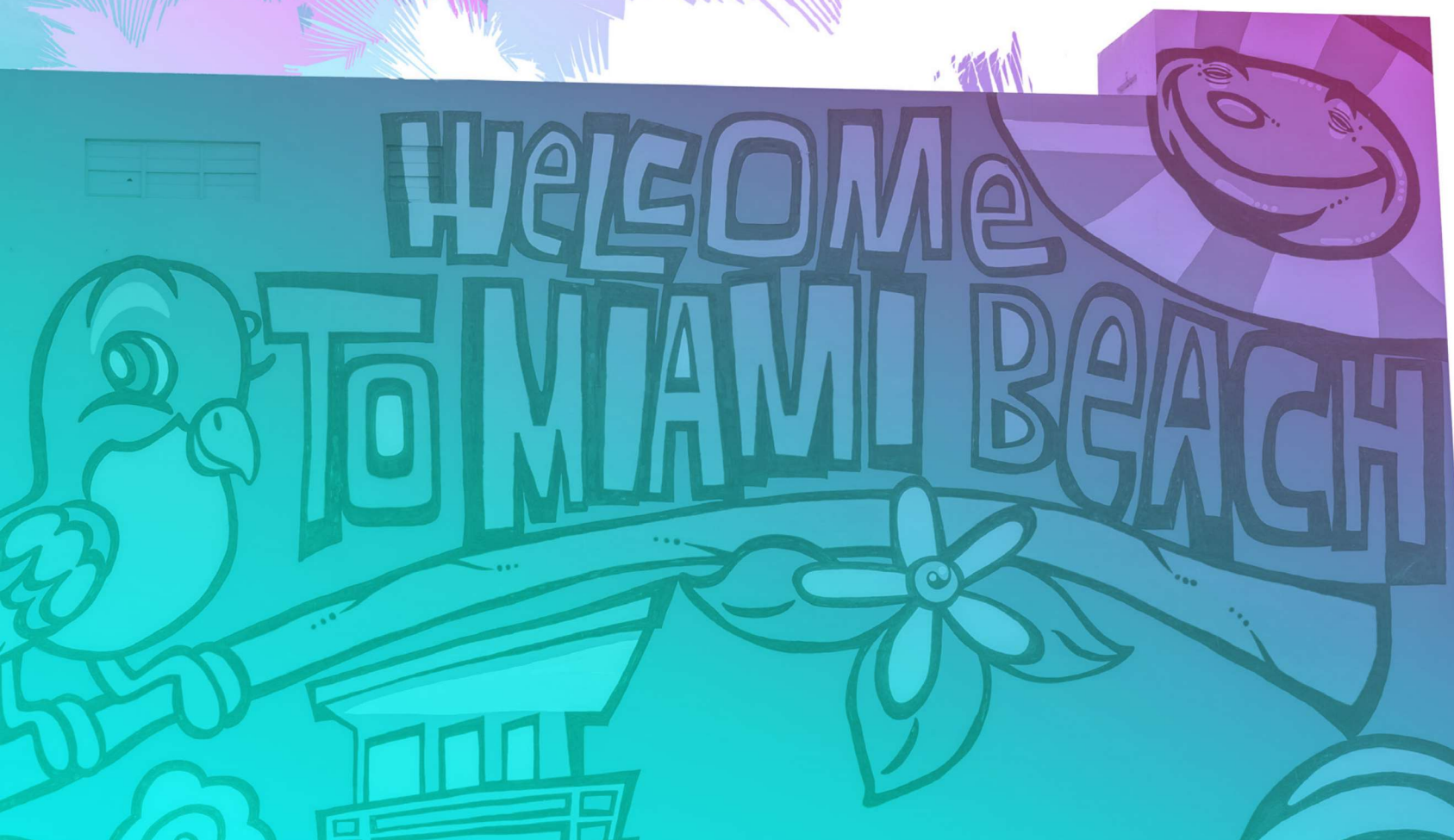




## Design Review Board Presentation

DRB23-0968  
DESIGN, MANUFACTURE, INSTALL, OPERATE, AND  
MAINTAIN INTERACTIVE DIGITAL MEDIA KIOSKS

*December 11, 2023*

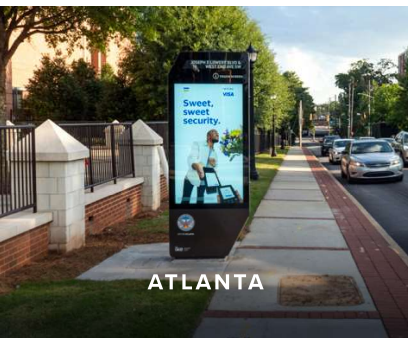




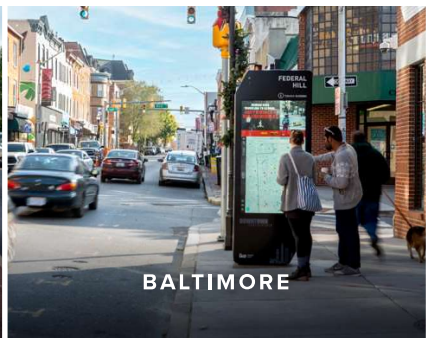
1

COMPANY  
INTRODUCTION  
& PRECEDENT





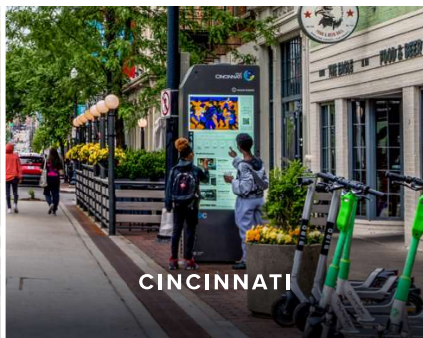
ATLANTA



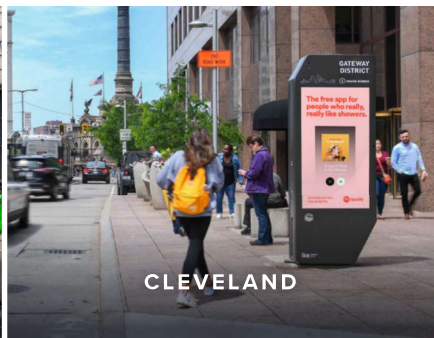
BALTIMORE



BERKELEY



CINCINNATI



CLEVELAND



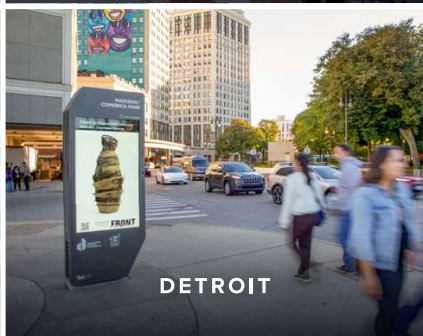
COLUMBUS



CORAL GABLES



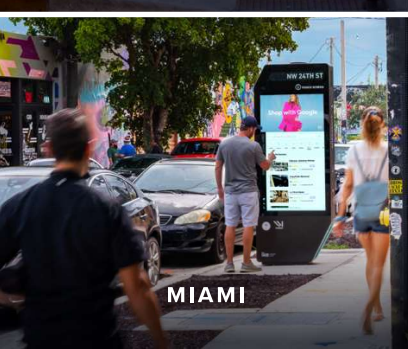
DENVER



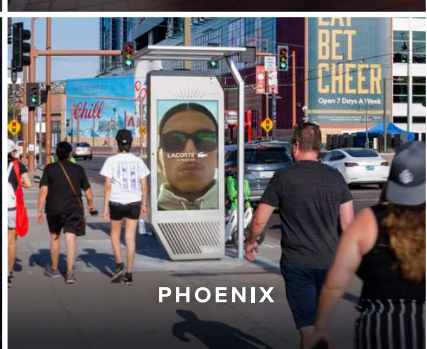
DETROIT



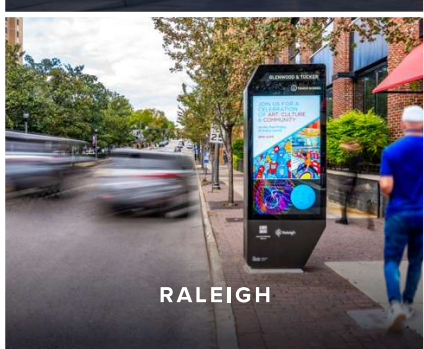
HOUSTON



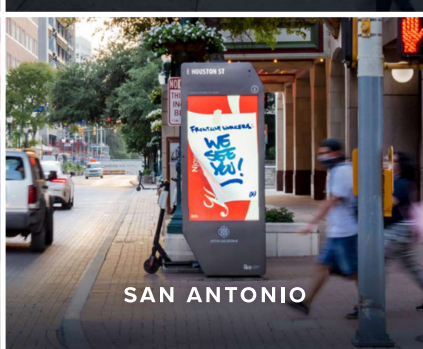
MIAMI



PHOENIX



RALEIGH



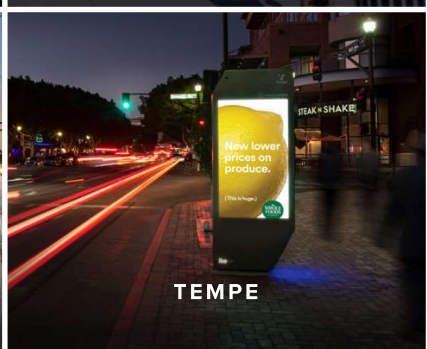
SAN ANTONIO



ST. LOUIS



TAMPA



TEMPE

OUR MISSION:

WE PIONEER  
**SMART CITY TECHNOLOGY**  
TO **IMPROVE LIVES IN CITIES.**



## EXPERT & VERTICALLY INTEGRATED TEAM



OVER **145 ASSOCIATES** WORKING TOWARDS A COMMON GOAL.



## 1. COMPANY INTRODUCTION & PRECEDENT

# THE TRUE SMART CITY HUB

## OBJECTIVES



DISCOVERY



MOBILITY



EQUITY

## PLATFORM



WORLD-CLASS SOFTWARE



FLEXIBLE AND RESPONSIVE



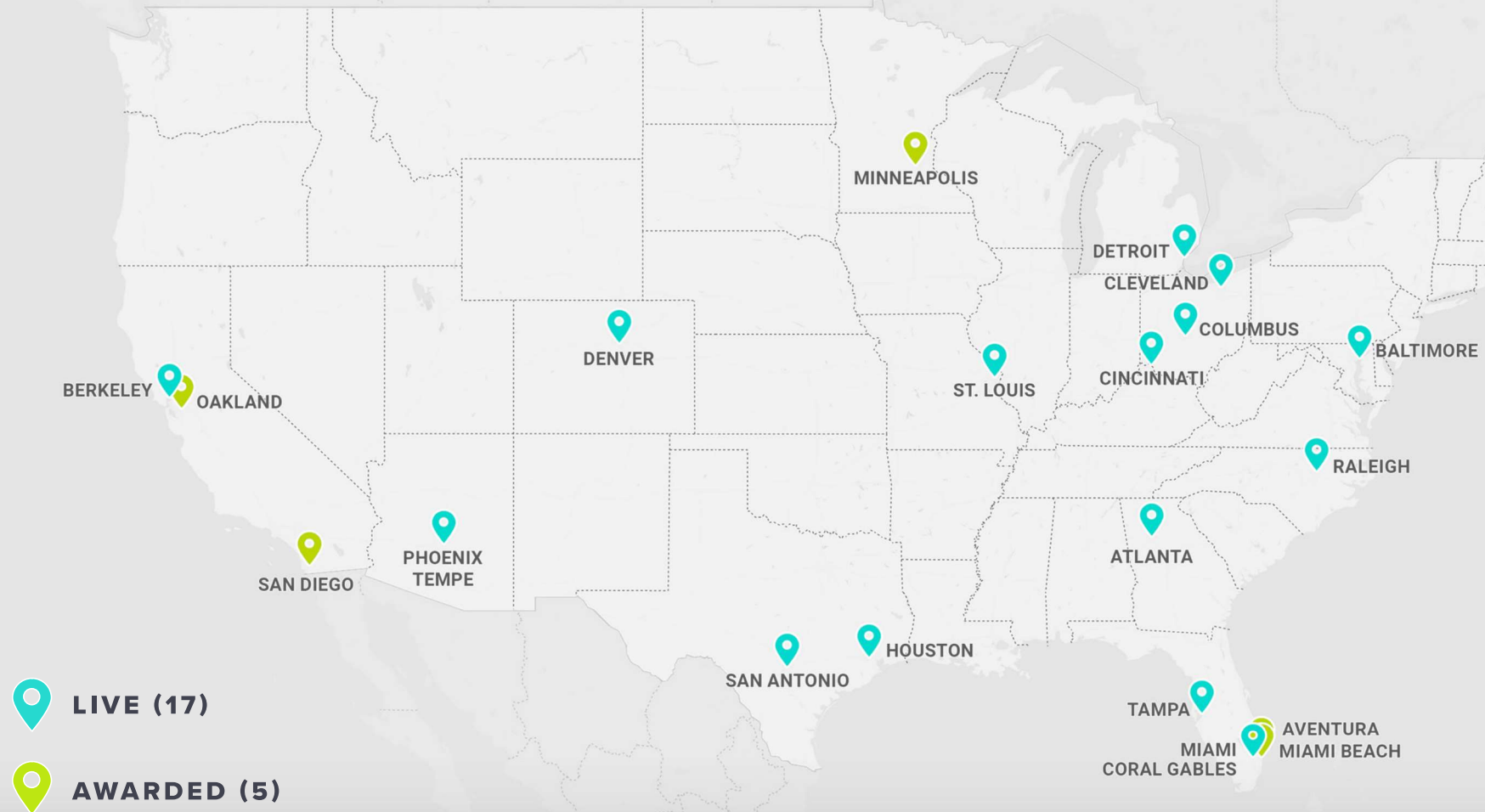
CONTINUOUS INNOVATION



Please click to learn why cities across the country are choosing IKE.



## NETWORKS IN SMART CITIES NATIONWIDE





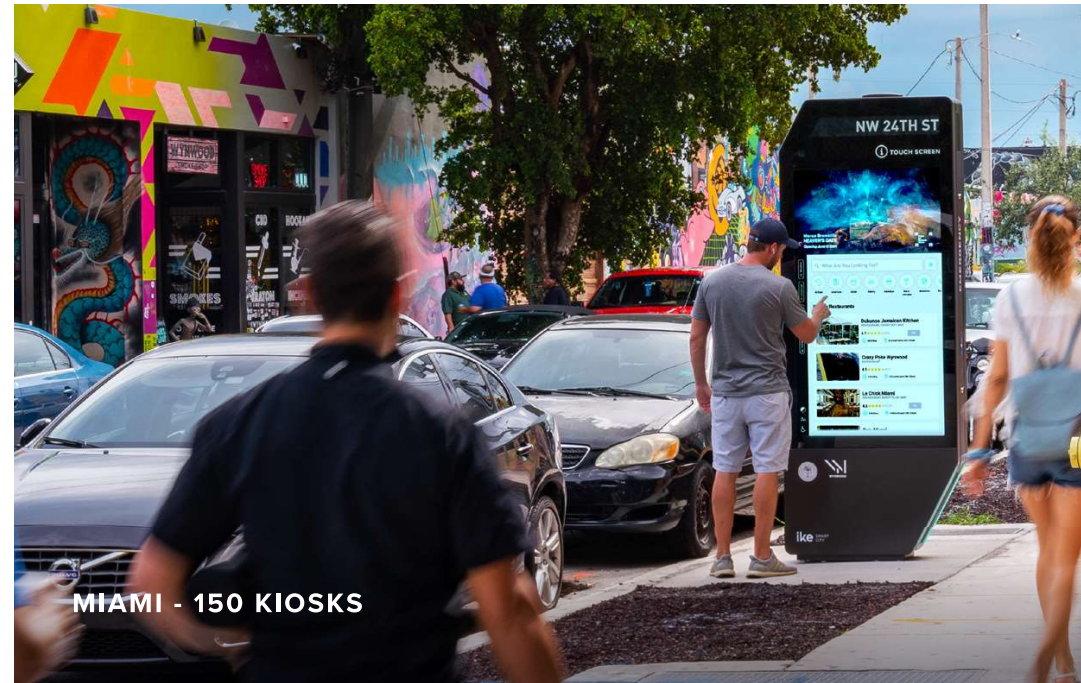
## 1. COMPANY INTRODUCTION & PRECEDENT

### EXPERIENCE IN SOUTH FLORIDA

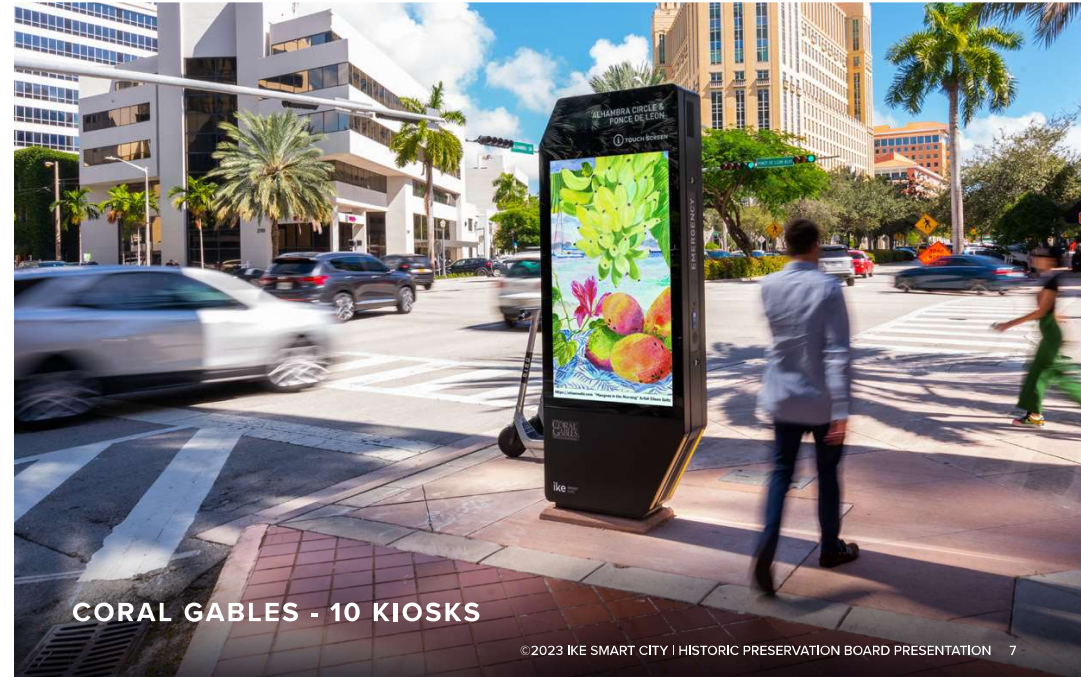
IKE Smart City has several years of experience working in South Florida, most notably with our IKE installations in Miami and Coral Gables.



Watch Miami Mayor Francis Suarez discuss how IKE adds value to the City in an episode of his social media video series, Cafecito Talk.



MIAMI - 150 KIOSKS



CORAL GABLES - 10 KIOSKS





# 2

RFP AWARD &  
CITY COMMISSION  
APPROVALS



## RFP AWARD & CITY COMMISSION APPROVALS

### KEY DATES

- ▶ **August 2021:** IKE submitted an unsolicited proposal to the City to manufacture, install, maintain, and operate interactive digital media kiosks at certain locations throughout the City
- ▶ **April 2022:** The City issued an RFP seeking alternative proposals for the same purpose as IKE's unsolicited proposal
- ▶ **December 2022:** IKE was awarded the RFP
- ▶ **January 2023:** The City Commission upheld the recommendation of IKE being the selected vendor and authorized the City Manager to begin contract negotiations
- ▶ **June 2023:** The Mayor and City Commission approved the business terms of the agreement
- ▶ **July 2023:** The agreement between IKE and the City was fully executed



## LETTERS OF SUPPORT

The following groups have provided letters in support of the installation of IKE kiosks throughout Miami Beach:

- ▶ Washington Avenue BID
- ▶ Lincoln Road BID
- ▶ Oolite Arts





## CONTENT STANDARDS

IKE Smart City will not display:

- ▶ Anything that has a strobing effect or visually replicates a traffic sign in colors and words;
- ▶ anything that is false or misleading;
- ▶ material that is immoral, lascivious, or obscene;
- ▶ businesses engaged in any activity that requires the exclusion of minors;
- ▶ anything that promotes unlawful or illegal goods, services or activities;
- ▶ tobacco or tobacco related products;
- ▶ firearms;
- ▶ sexual services, programs or products;
- ▶ political advertisements;
- ▶ competitive products included in any citywide exclusive sponsorship agreement with non-alcoholic pouring rights providers;

- ▶ advertisements relating to medical marijuana; and
- ▶ any such additional category of advertising that may be added by the Mayor and City Commission.

Any prohibited or unacceptable material, as determined by the City Manager, shall be removed upon written notice to IKE Smart City within 24 hours.

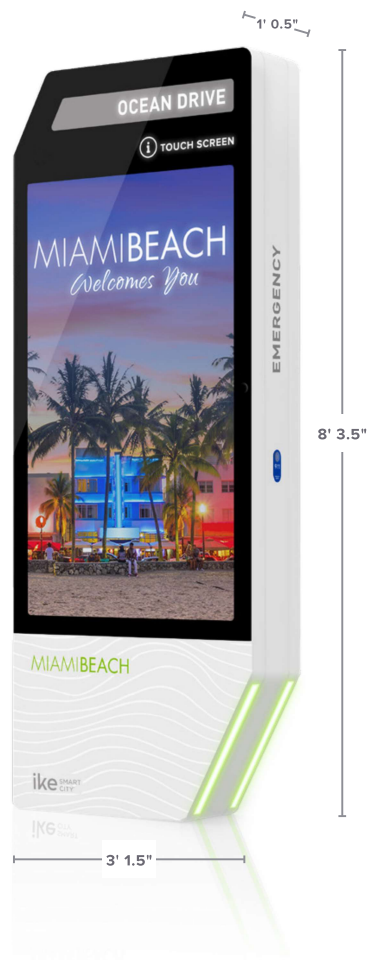


# 3

## KIOSK SPECIFICATIONS, DESIGN, FUNCTIONALITY & BENEFITS



KIOSK SPECIFICATIONS



HARDWARE	DESCRIPTION	
PHYSICAL	<ul style="list-style-type: none"><li>• Size: (H x W x D) 8' 3.5" x 3' 1.5" x 1' 0.5"</li><li>• Weight: 832 lbs</li><li>• Required sidewalk area: 6' 2" x 6' 4"</li><li>• 6' 2" x 3' level area on both sides of the kiosk is provided in compliance with building codes</li></ul>	
POWER SOURCE	<ul style="list-style-type: none"><li>• 20A @ 120V / 15A @ 240V</li><li>• Max power consumption 1920W</li><li>• Connects to new or existing metered/unmetered utility service as needed, fed from underground in the sidewalk</li><li>• Evaluated to UL Safety Standards by a Nationally Recognized Testing Laboratory (NRTL)</li></ul>	
TOUCHSCREEN DISPLAYS	<ul style="list-style-type: none"><li>• Screen size: 65" (5' 5")</li><li>• Screen type: IPS LCD</li><li>• Resolution: 1920 x 1080</li><li>• Aspect ratio: 16:9</li><li>• Active image area : 4' 8.2" x 2' 7.6"</li></ul>	<ul style="list-style-type: none"><li>• Viewing angle: (H x V) 178° x 178°</li><li>• Direct LED backlit</li><li>• Brightness: 4000 nits, auto-adjusted by ambient light sensors</li><li>• Supports polarized sunglasses</li></ul>
INTERNET CONNECTIVITY	<ul style="list-style-type: none"><li>• Wireless Access Point for free public Wi-Fi</li><li>• Hotspot within a 75' radius</li><li>• Connectivity provided by mobile modem, LTE Advanced with SIM-based auto-carrier</li><li>• Fiber optics possible but not required</li></ul>	
STANDARD/OPTIONAL CAMERAS	<ul style="list-style-type: none"><li>• Standard configuration: Two integrated video cameras for novelty use in Photo Booth application</li><li>• Optional technology: One emergency call camera and two security cameras with a DVR recording system</li></ul>	
OPTIONAL EMERGENCY CALL SYSTEM	<ul style="list-style-type: none"><li>• Emergency call button with an integrated cellular connection module connects to local emergency authorities when pressed</li><li>• Integrated speaker provides two-way audio communication and pinhole camera allows emergency services to see the caller and surroundings</li></ul>	
ADA COMPLIANCE	<ul style="list-style-type: none"><li>• Minimum touchscreen height (ADA enabled) = 1' 3"</li><li>• Maximum touchscreen height (ADA enabled) = 4'</li><li>• Side reach maximum (i.e. footing-to-screen distance) = 10"</li><li>• Leading edge of protrusion less than 2' 3"</li></ul>	

### 3.1 KIOSK SPECIFICATIONS

## RESILIENT KIOSK DESIGN

- ▶ Corrosion-resistant for a minimum of 15 years
- ▶ Dust- and water-resistant to a rating of IP-56
- ▶ Shatterproof tempered glass doors laminated with optical clear resin
- ▶ Operating temperature of -20° to 120° Fahrenheit and 5% to 95% humidity
- ▶ Withstands direct sunlight up to 300W per square meter of solar load
- ▶ Rated to withstand hurricane-force winds of up to 165 mph (including glass and foundation)
- ▶ Flood sensor automatically powers down the system if water line reaches 18" from the base of the kiosk





### 3.1 KIOSK SPECIFICATIONS

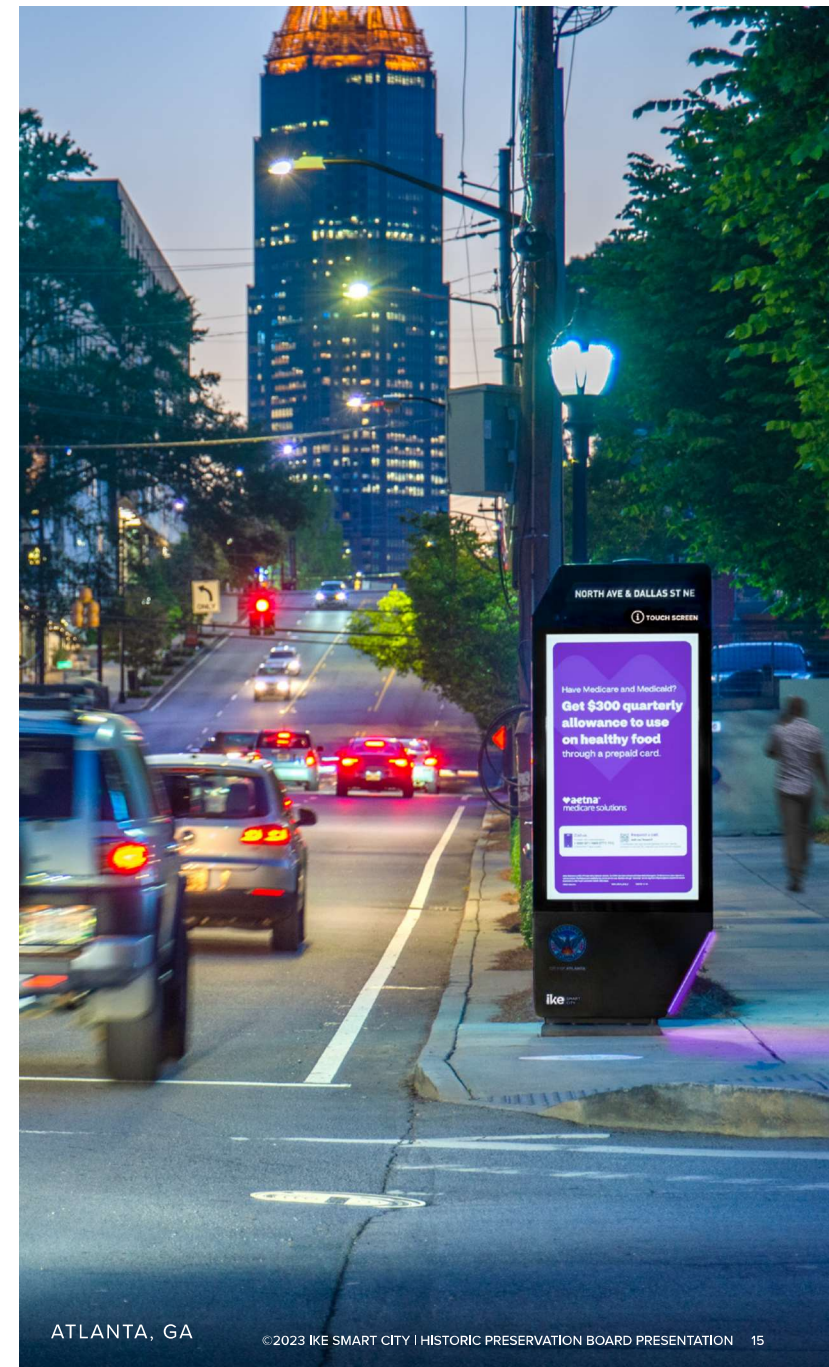
## ILLUMINATION DETAILS

### SPECIFICATIONS

- ▶ 65" dual-sided digital screens
- ▶ Native resolution: 1920 x 1080
- ▶ Illumination measurement: 320 NIT - 4,000 NIT

### BRIGHTNESS CONTROLS

- ▶ Ambient light sensors automatically dim the brightness of IKE's screens
- ▶ Remote monitoring system
- ▶ Remote illumination control system
- ▶ Graphics in the advertising loop rotate in 10-second increments





### 3.2 KIOSK DESIGN

## KIOSK DESIGN CONCEPT

- ▶ Extensive work in cities has informed approach to design
- ▶ IKE's sleek form was designed in partnership with Pentagram
- ▶ Simple and inviting to deter vandalism and drive usage

# MIAMI BEACH





## KIOSK DESIGN CONCEPT (CONT.)

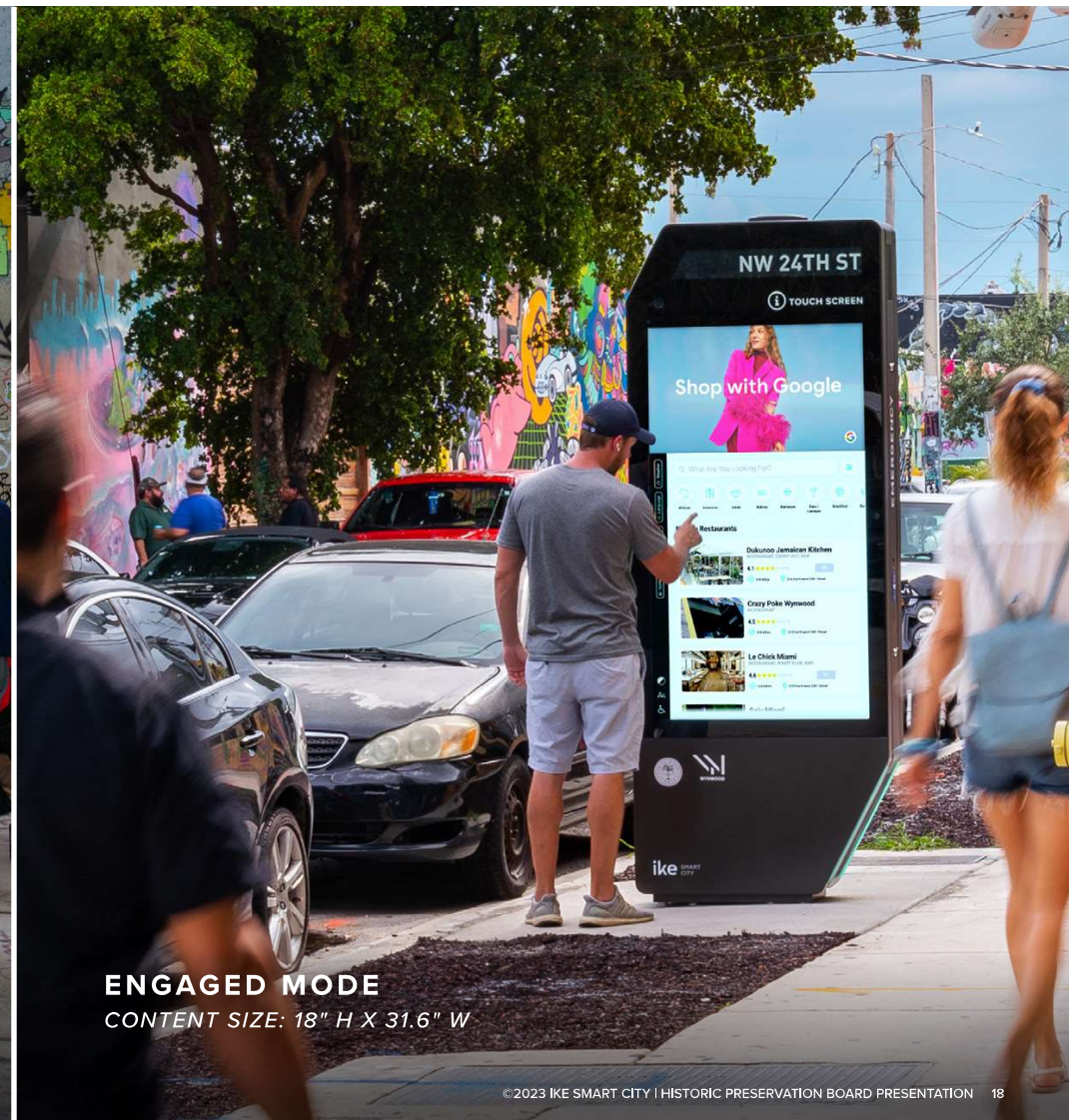
### INSPIRATION: OCEAN

- This proposed design pairs a light, clean paint color with gently curved lines
- Kiosks will be maintained in like new condition throughout the term of the agreement with the City



### 3.2 KIOSK DESIGN

## TWO MODES OF OPERATION





## INTERACTIVE SUITE OF APPLICATIONS



### EAT + DRINK

Gives plenty of options for hungry and thirsty residents and visitors to satisfy their cravings.



### EVENTS

Highlights everything going on in the city with up-to-date event listings and integrated wayfinding.



### PHOTOBOOTH

Lets pedestrians take fun selfies and send the pics to their smartphone.



### GET AROUND

Provides multimodal wayfinding, trip planning, and real-time public transit information.



### POINTS OF INTEREST

Provides the user with a point-to-point tour of local landmarks.



### JOB BOARD

Provides communities with easy access to local job listings and employment opportunities.



### PARKS + BEACHES

Helps people enjoy the sunshine at outdoor destinations around the city.



### SOCIAL SERVICES

Improves access to support services and resources for communities and citizens in need.



### ARTS + CULTURE

Showcases cultural destinations and activities for those looking to experience the creative arts.



### ACTIVITIES

Highlights things to do in the city across a wide range of interests.



### SAFE SHELTER

Directs those without homes or a safe place to stay to facilities offering beds and other services.



### CIVIC RESOURCES

Makes it easy to get important things done with listings of municipal buildings and services.



### SURVEY SAYS

Collects citizen feedback on questions created by the city.



### STAY

Lists a wide variety of overnight accommodations.



### ARCADE

Entertains and engages pedestrians with a fun and easy-to-use video game.



### SHOP

Entices shoppers to spend at local retail destinations.

## PUBLIC SAFETY

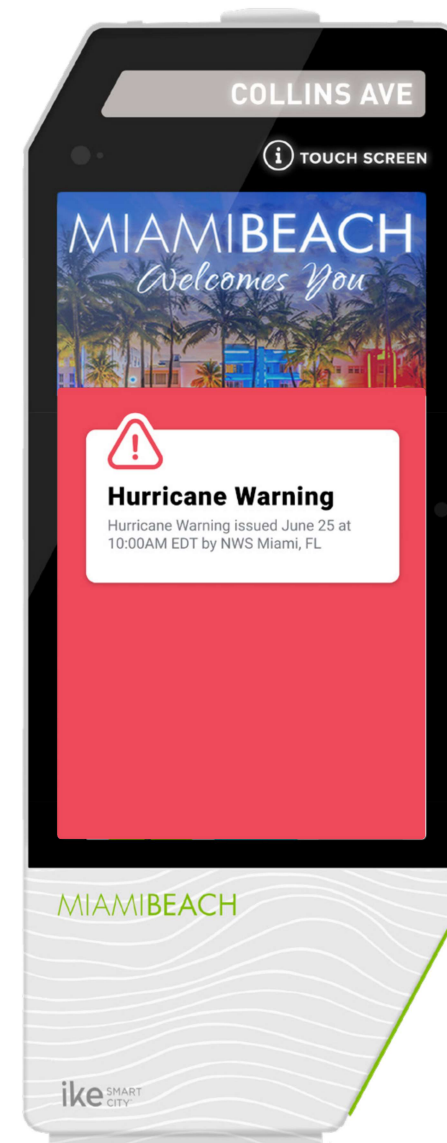
- ▶ Emergency Call System dials 911
- ▶ Enables two-way communication between caller and dispatcher
- ▶ Three security cameras record surroundings





## REAL-TIME WEATHER AND OTHER EMERGENCY MESSAGING

- ▶ IKE displays emergency alerts in real-time from the Integrated Public Alert & Warning System
- ▶ Alerts include severe weather events, AMBER alerts, active shooters, and more





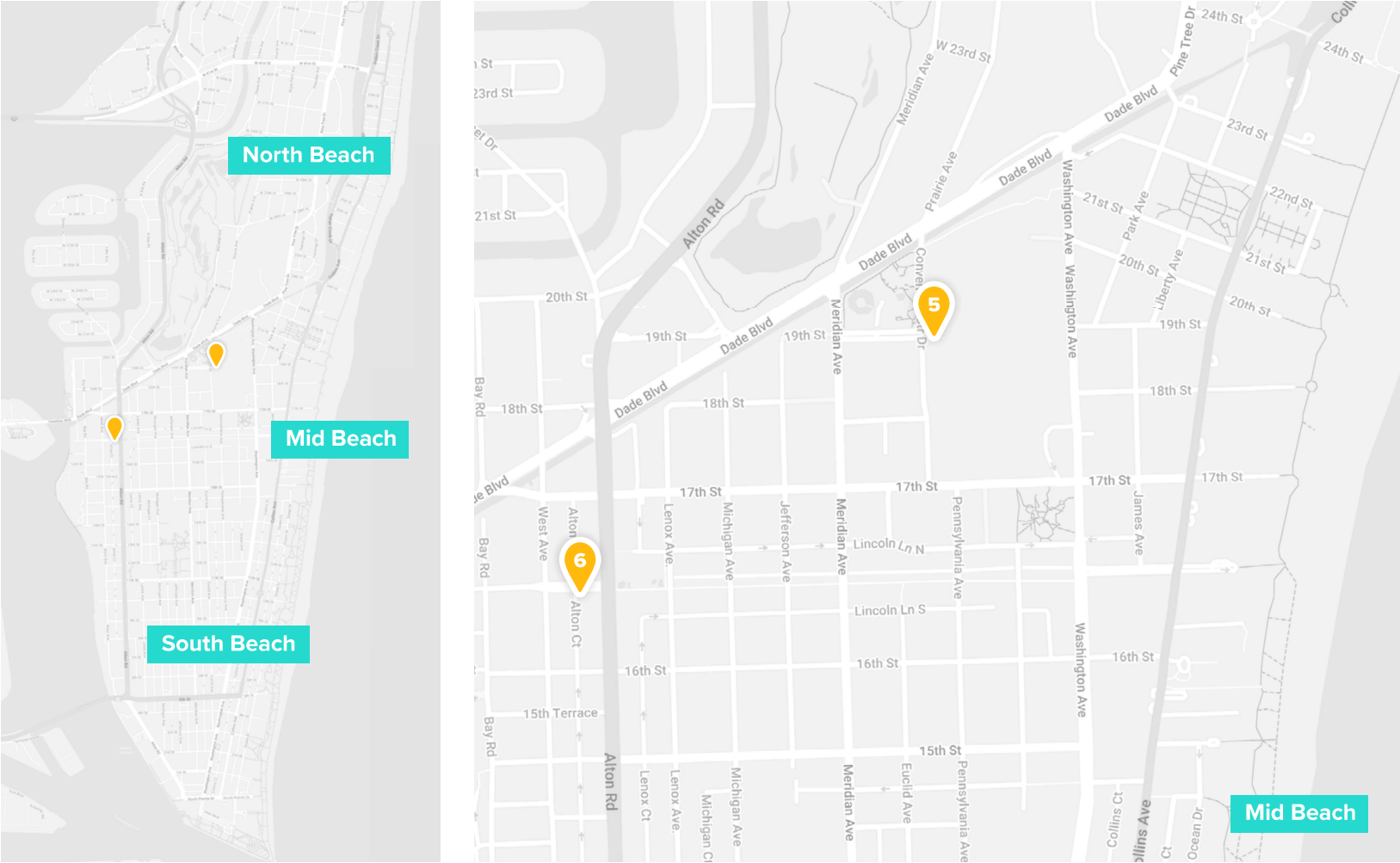
# 4

PROPOSED KIOSK  
LOCATIONS, EXISTING  
CONDITIONS  
& RENDERINGS



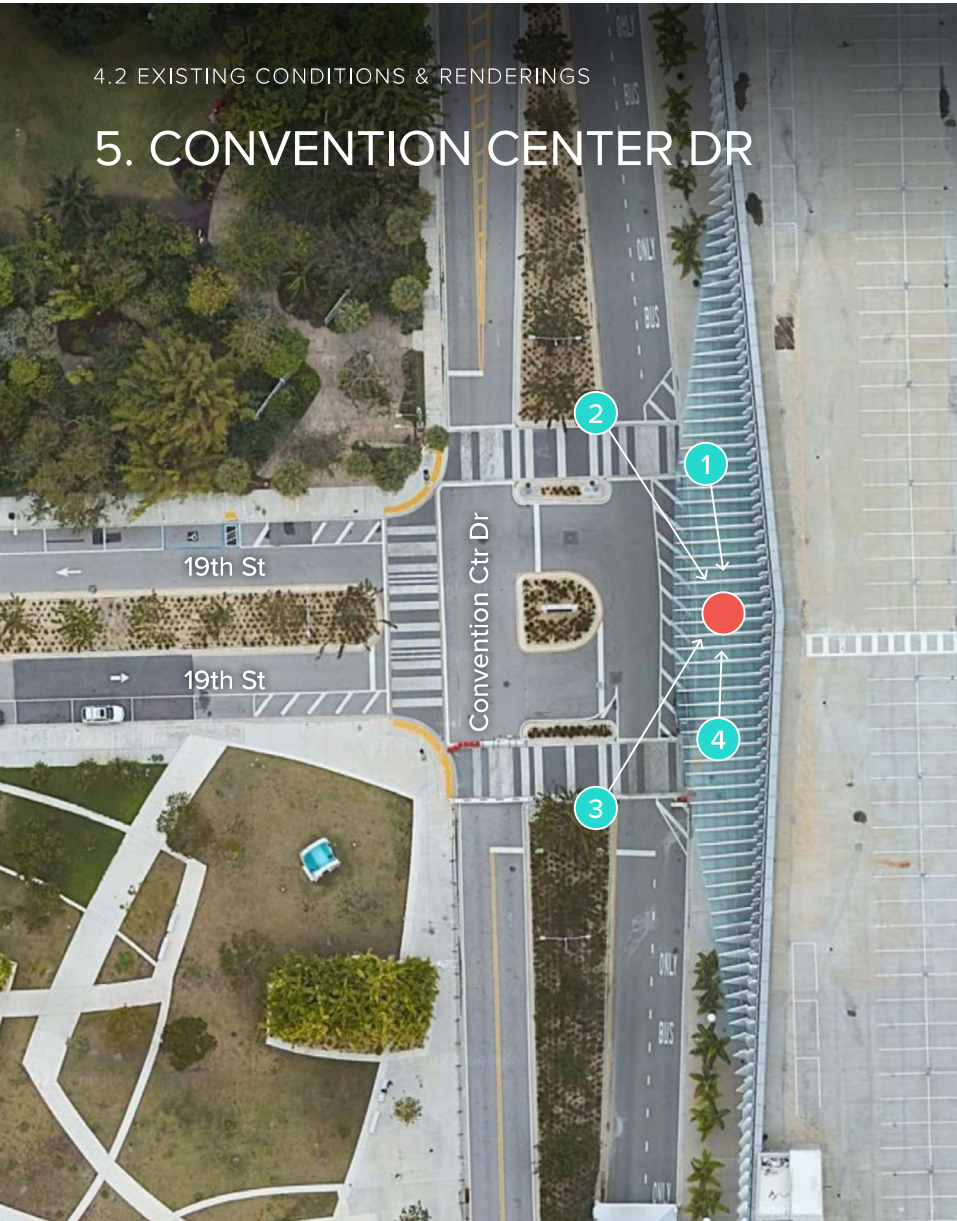
# PROPOSED IKE KIOSK LOCATIONS

Please see the 2 kiosk locations for review by the Design Review Board on the following pages.



4.2 EXISTING CONDITIONS & RENDERINGS

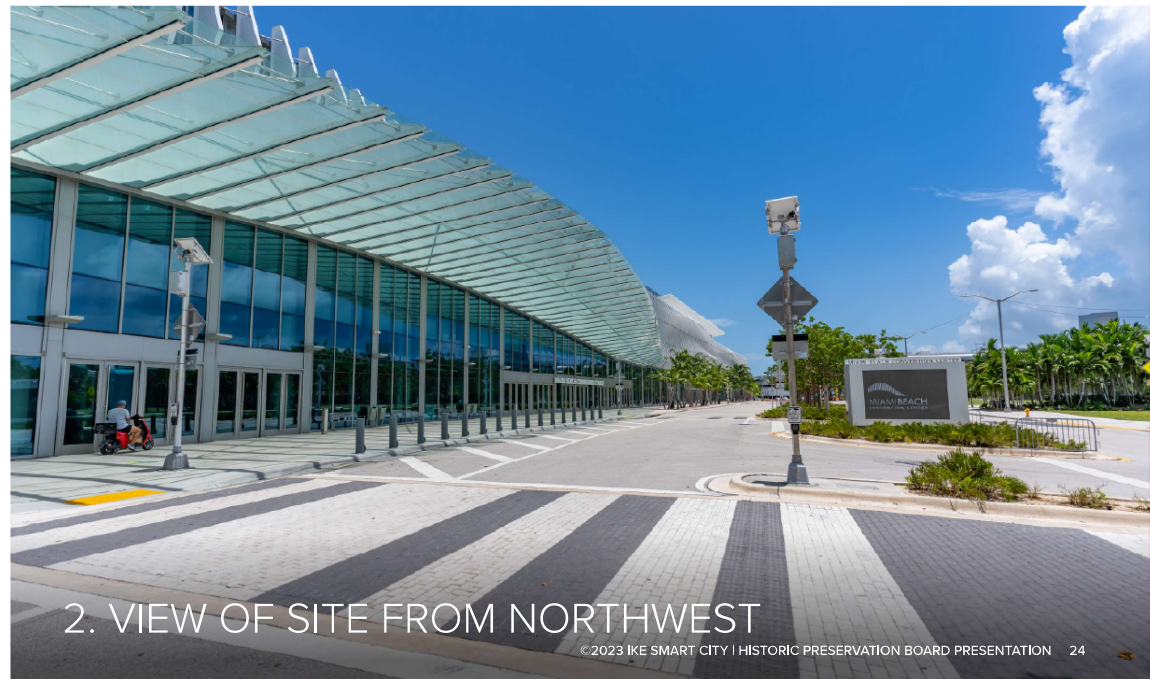
## 5. CONVENTION CENTER DR



- TEAL CIRCLES: PHOTOGRAPHER'S APPROXIMATE POSITION
- RED CIRCLE: APPROXIMATE KIOSK POSITION



1. VIEW OF SITE FROM NORTH

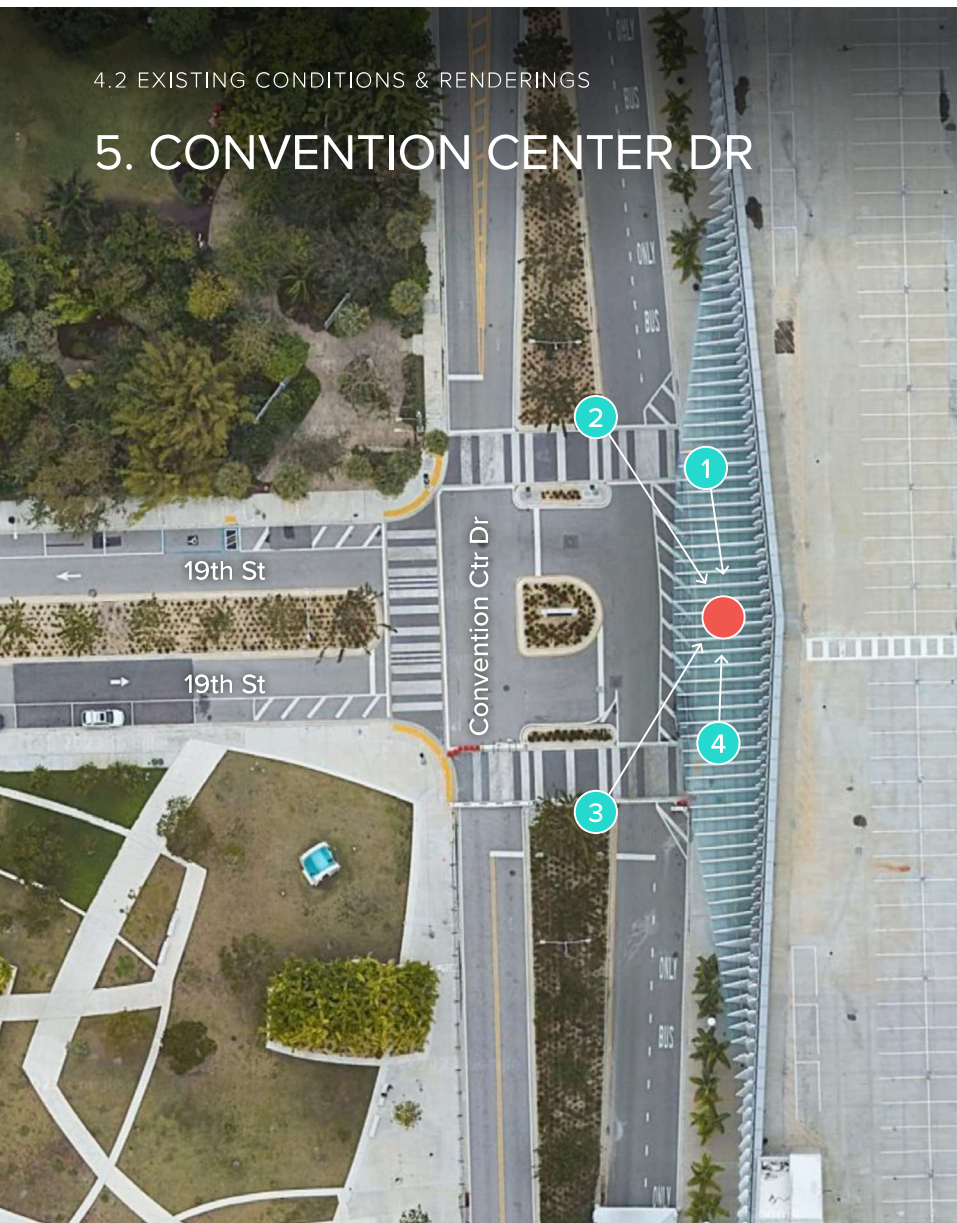


2. VIEW OF SITE FROM NORTHWEST



4.2 EXISTING CONDITIONS & RENDERINGS

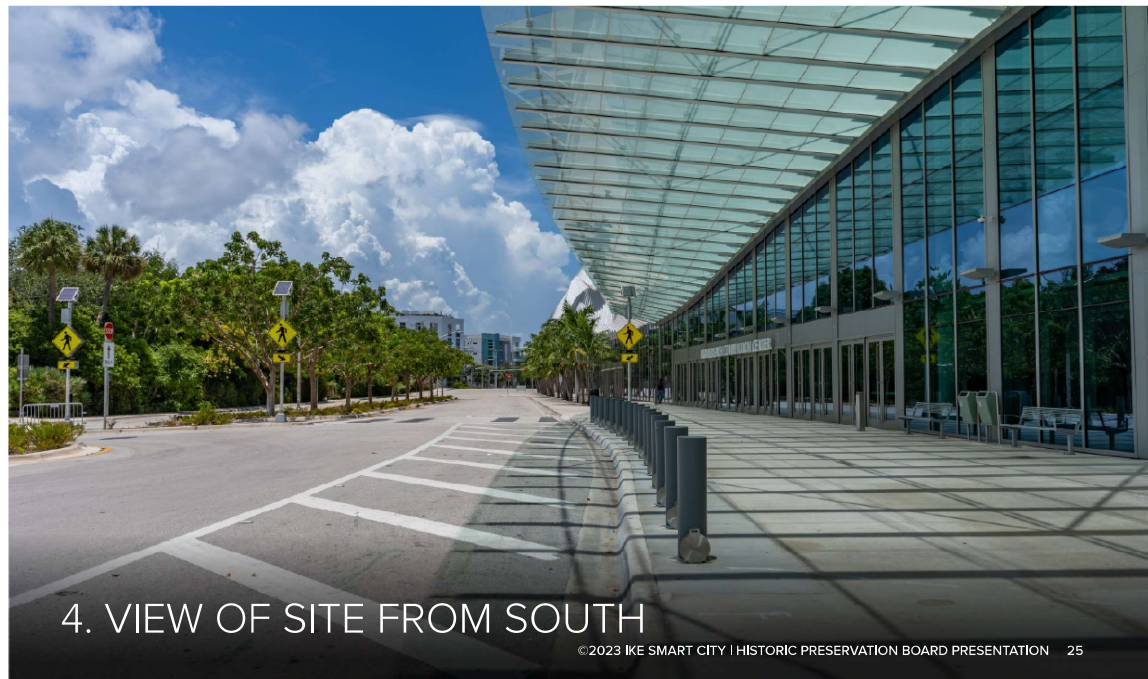
## 5. CONVENTION CENTER DR



- TEAL CIRCLES: PHOTOGRAPHER'S APPROXIMATE POSITION
- RED CIRCLE: APPROXIMATE KIOSK POSITION



3. VIEW OF SITE FROM SOUTHWEST



4. VIEW OF SITE FROM SOUTH



## 5. CONVENTION CENTER DR

RENDERING





## 6. LINCOLN RD & ALTON RD\*

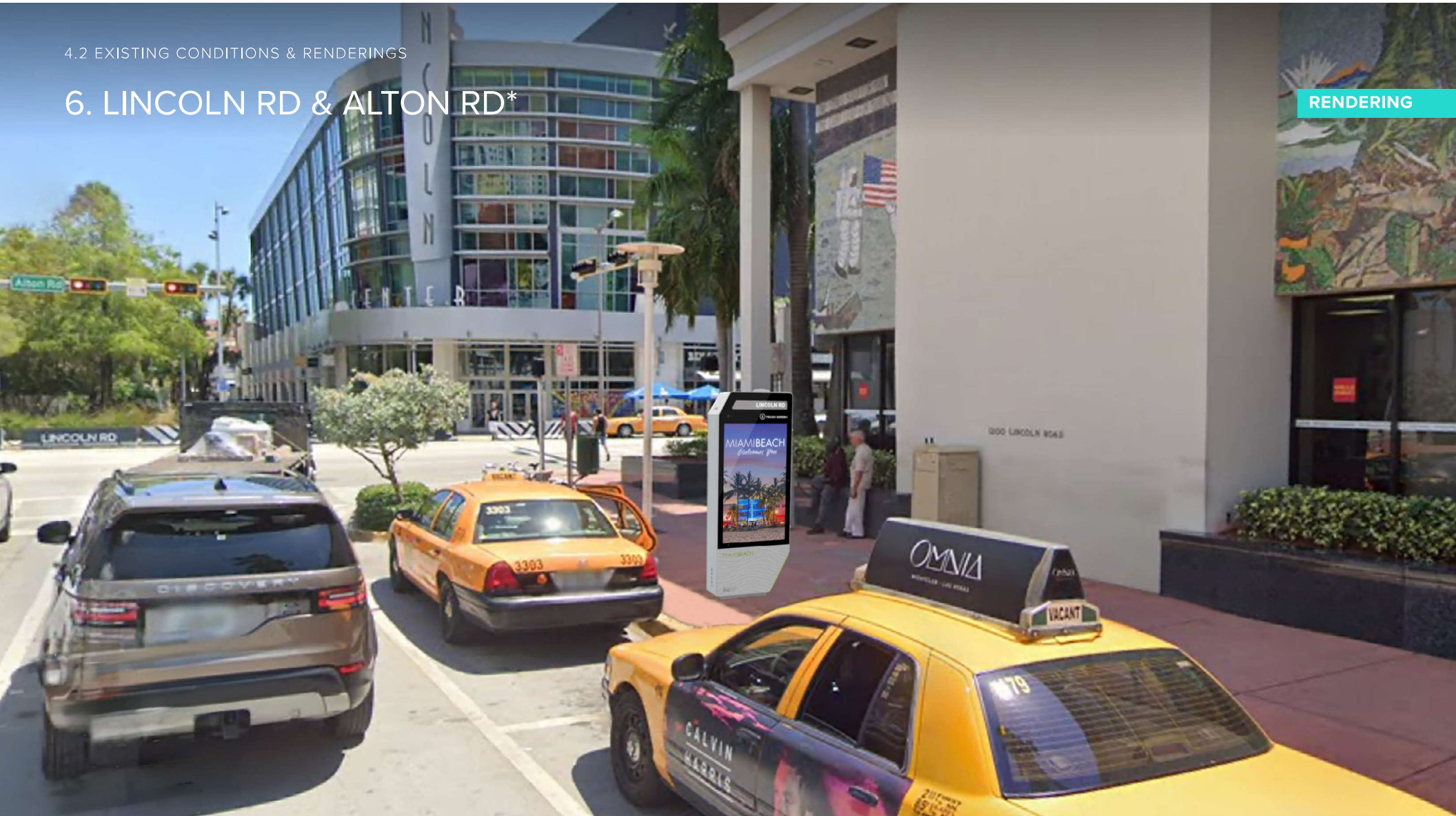


Due to the ongoing construction at this intersection as a result of the CitizenM Hotel development, the sidewalk is currently obstructed by construction fencing. Therefore, IKE was unable to confirm surveys, draft civil drawings, or produce an updated rendering. The photo shown was taken from a Google Maps image from July 2022.



## 6. LINCOLN RD & ALTON RD\*

RENDERING



Due to the ongoing construction at this intersection as a result of the CitizenM Hotel development, the sidewalk is currently obstructed by construction fencing. Therefore, IKE was unable to confirm surveys, draft civil drawings, or produce an updated rendering. The rendering shown was created using a Google Maps image from April 2019.



# Thank You

**PETE SCANTLAND**

*Chief Executive Officer*

250 N. Hartford Ave.  
Columbus, OH 43222  
T: 614 205 9108  
pscantland@IKEsmartcity.com

**JIBRAN SHERMOHAMMED**

*Vice President of Development  
and Corporate Counsel*

250 N. Hartford Ave.  
Columbus, OH 43222  
T: 770 714 9174  
jibran@IKEsmartcity.com

**ANNA BAERMAN**

*Senior Development Director*

250 N. Hartford Ave.  
Columbus, OH 43222  
T: 216 338 8152  
abaerman@IKEsmartcity.com

**KATHERINE PERDOMO**

*Development Director*

250 N. Hartford Ave.  
Columbus, OH 43222  
T: 305 299 6977  
kperdomo@IKEsmartcity.com

**MARISSA CRUDELE**

*Associate Development Director*

250 N. Hartford Ave.  
Columbus, OH 43222  
T: 512 214 7496  
mcrudele@IKEsmartcity.com



[IKEsmartcity.com](http://IKEsmartcity.com)





# 5

APPENDIX



## ACCESSIBILITY

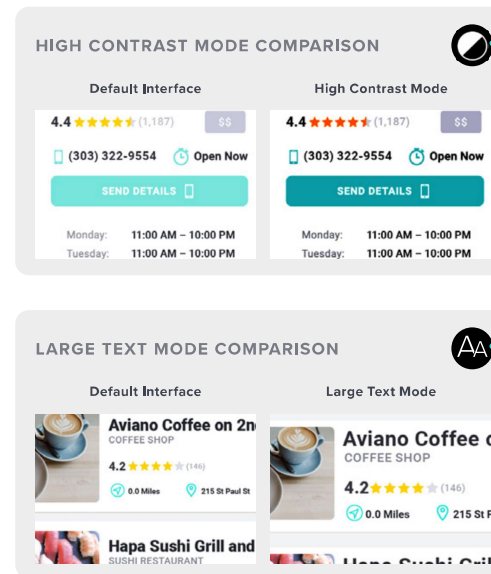
IKE is an inclusive platform that was designed to serve the needs of all citizens. The kiosks are 100% ADA compliant and have been reviewed by an accessibility specialist to ensure compliance with federally mandated requirements. Specifically, IKE meets:

- ▶ ADA 307.2 Protrusion Limits design recommendations (for blind and low vision) by having no protruding objects, greater than 4 inches, above 27 inches from ground level
- ▶ ADA 308.2 Forward Reach design recommendations by allowing all controls to be reachable between 15 and 48 inches from ground level
- ▶ ADA 309.4 Operation recommendations and does not require tight grasping, pinching, or twisting of the wrist
- ▶ ADA 308.3 Side Reach design recommendations by allowing all controls to be reachable between 15 and 48 inches from ground level
- ▶ ADA 304.3.2 T-Shaped Space clearance standard at all kiosk locations

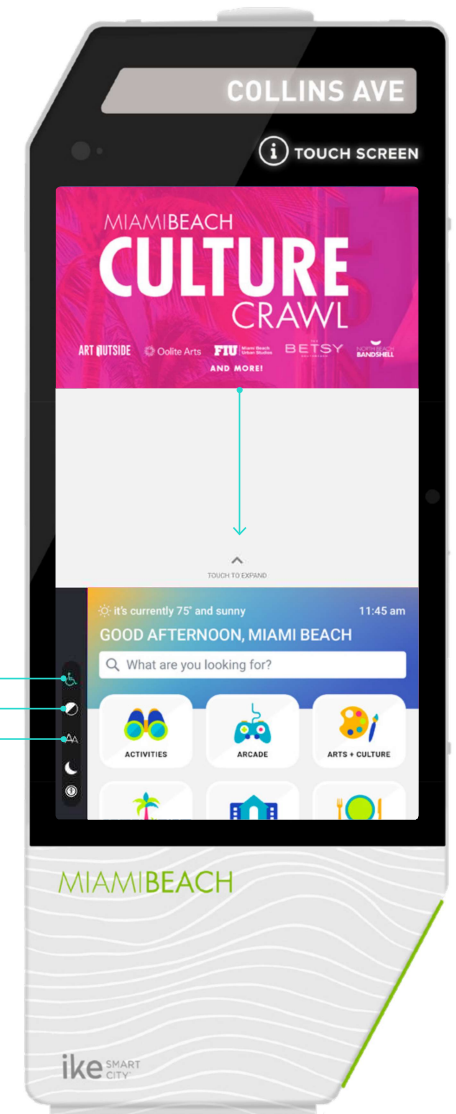
### WHEELCHAIR ACCESSIBILITY TOOL

*Repositions on-screen content to lower reach*

### VISUAL SUPPORT TOOLS:



[Click here to read our letter of endorsement from the National Federation for the Blind.](#)



## MULTILINGUAL INTERFACE

IKE is multilingual in up to 100 languages and provides the highest quality translations to accommodate those whose primary language is not English. Users can easily choose their language from a list along the left side of IKE's home screen.

- ▶ Our interface does not rely solely on free machine-translation tools like Google Translate, which has limitations when it comes to grammatical accuracy and cultural nuance
- ▶ We use human interpreters to translate key interface elements to ensure that they are correct and contextual, thus avoiding cultural misinterpretations
- ▶ Each kiosk can be programmed to reflect the predominant language spoken in the area surrounding its location

LANGUAGE  
SELECTOR  
DRAWER

