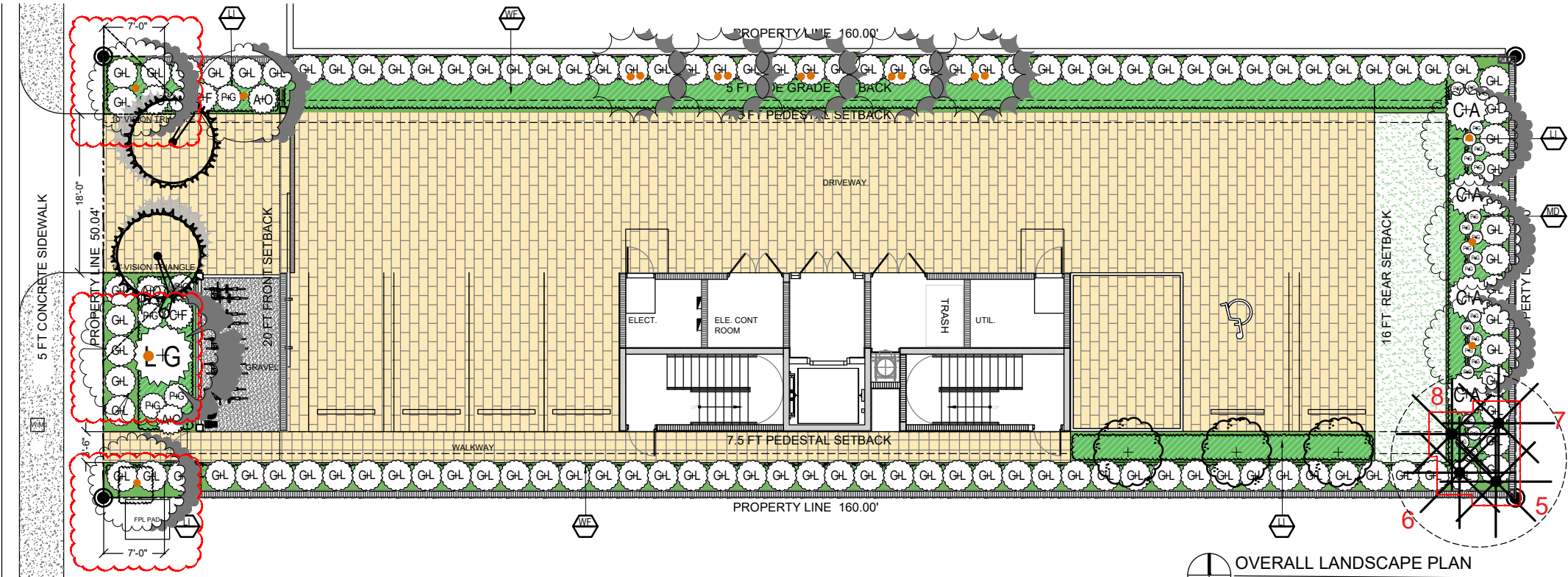


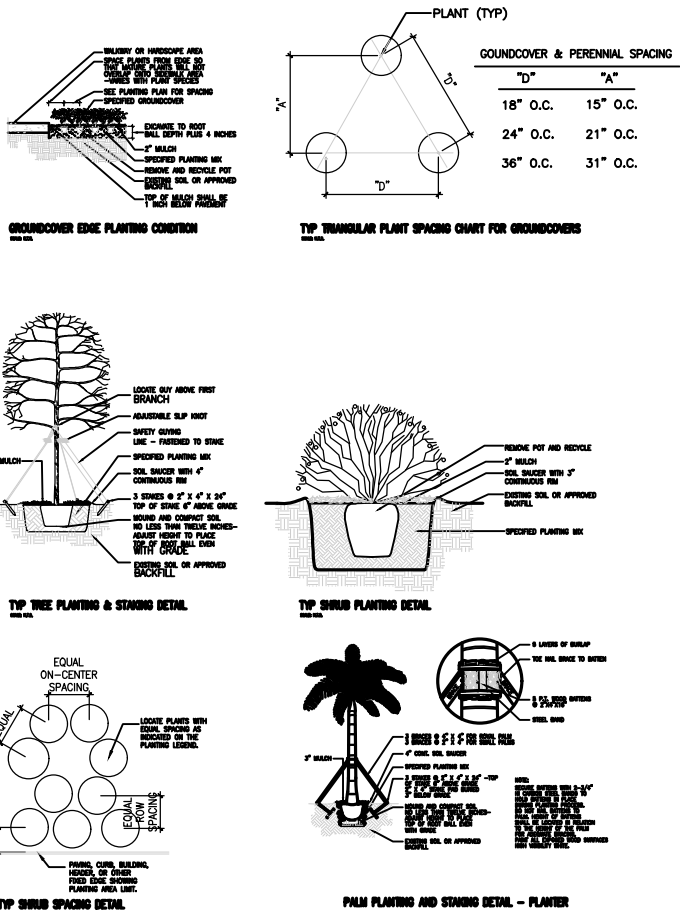


LENOX AVE

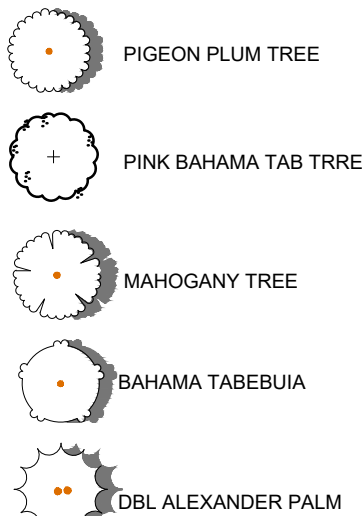


OVERALL LANDSCAPE PLAN  
Scale: 1/16" = 1'-0"

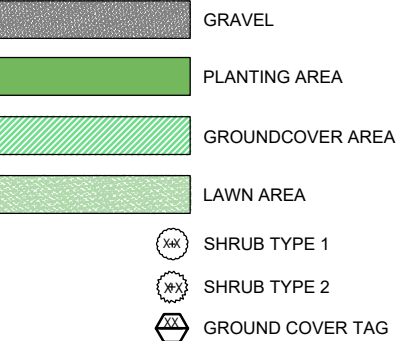
## LANDSCAPE DETAILS



## PROPOSED PLANTING SYMBOLS



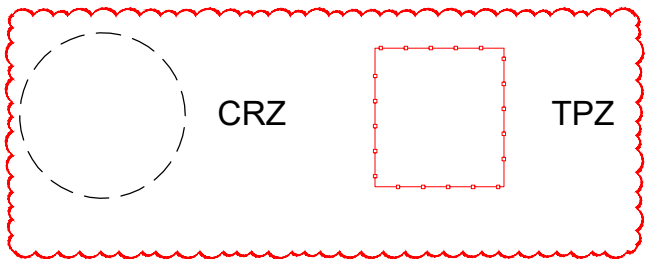
## LEGEND



PROPOSED PLANT LIST						
SYM	BOTANICAL NAME	COMMON NAME	SPEC	NATIVE	DROUGHT	QTY
TREES - PALMS						
AO	Alcantarea odorata	Silver odorata bromeliad	20"X 20"			4
CA	Crinum asiaticum	crinum lily	25G			4
CF	Cordyline alliodora	Black Magic	15G			2
PG	Philodendron gloriosum	Philodendron	7G			6
PG	Philodendron gloriosum	Philodendron	3G			24
LG	Licuala grandis	Ruffled Fan Palm	45G			1
GL	Gymnanthes lucida	Crabwood Hedge	25 G 5'-6" HT	*	*	112
SHRUBS + ACENTS						
LM	Liriodendron muscari	Lilyturf	3 GAL @ 18" OC			251
WF	Microsorum scolopendria	Wart Fern	1 GAL @ 24" OC	*	*	233
MD	Monarda didyma	Swiss Cheese Plant	7 GAL @ 36" OC	*	*	57
GROUNDCOVERS						
Top Soil	50/50 Mix 5'-6" Deep					318 sq ft
Empire Zoysia	Empire Zoysia					

CITY OF MIAMI BEACH LANDSCAPE LEGEND  
Zoning District: RM-1 Lot Area: 8,000 Sqft Acres: 0.184

TREES	Required/ Allowed
A. Number of trees required per lot or net lot acre, less existing number of trees meeting minimum requirements: 28 trees x .0184 net lot acres - number of existing trees (0) = 28*0.184	5 8
B. % Natives required: Number of trees provided x 30% = 8*3	2 4
C. % Low maintenance / drought and salt tolerant required: Number of trees provided x 50% = 8*5	4 8
D. Street Trees (maximum average spacing of 20' o.c.): 50 linear feet along street divided by 20' = 30/20	3 3
E. Street tree species allowed or every alternate power lines: (maximum average spacing of 20' o.c.): linear feet along street divided by 20'	N/A N/A
SHRUBS	
A. Number of shrubs required: Sum of lot and street trees required x 12 = 8*12	96 153
B. % Native shrubs required: Number of shrubs provided x 50% = 153*5	77 114
LARGE SHRUBS OR SMALL TREES	
A. Number of large shrubs or small trees required: Number of required shrubs x 10% = 96*1	10 10
B. % Native large shrubs or small trees required: Number of large shrubs or small trees provided x 50% = 8*5	4 4



## GENERAL NOTES

- EXISTING TREES DESIGNATED TO REMAIN SHALL BE PROTECTED DURING ALL CONSTRUCTION PHASES. ANY TREES OR SHRUBS SCARRED OR DESTROYED DESIGNATED TO REMAIN WILL BE REPLACED AT THE CONTRACTOR'S EXPENSE, WITH SIMILAR SPECIES, SIZE AND QUALITY.
- LANDSCAPE CONTRACTOR SHALL CONTACT THE CITY AND/OR UTILITY COMPANIES TO LOCATE ALL UNDERGROUND UTILITIES OR STRUCTURES PRIOR TO DIGGING. LANDSCAPE CONTRACTOR SHALL REPAIR ALL DAMAGE TO UNDERGROUND UTILITIES, AND/OR CONSTRUCTION CAUSED BY UTILITY DAMAGE, AT NO COST TO THE OWNER.
- ALL PLANT MATERIALS SHALL BE GUARANTEED FOR A PERIOD OF 12 MONTHS AFTER DATE OF SUBSTANTIAL COMPLETION.
- LANDSCAPE CONTRACTOR SHALL VERIFY ALL ESTIMATED QUANTITIES OF MATERIAL SHOWN ON THE DRAWINGS PRIOR TO SUBMITTING HIS BID. PLANTING PLAN TO TAKE PRECEDENCE OVER PLANT LIST.
- ALL AREAS DISTURBED DURING CONSTRUCTION SHALL BE SOD UNLESS OTHERWISE NOTED.
- EXISTING PLANT MATERIAL NOT SHOWN ON THE PLAN AND IN CONFLICT WITH NEW PLANTING SHALL BE EVALUATED AT THE TIME OF NEW PLANTING INSTALLATION BY THE LANDSCAPE ARCHITECT.
- ALL BUILDING CONSTRUCTION MATERIAL AND FOREIGN MATERIAL SHALL BE REMOVED FROM PLANTING AREAS AND REPLACED WITH 80/20 MIX FILL SOIL, OR AS PER SPECIFICATIONS.
- ALL PLANT MATERIAL SYMBOLS SHOWN ON LANDSCAPE PLAN SHALL BE CONSIDERED DIAGRAMMATIC AND SHOULD BE ADJUSTED IN THE FIELD BY CONTRACTOR TO AVOID ALL UTILITIES, AND ALL OTHER OBSTRUCTIONS.
- ALL SIZES SHOWN FOR PLANT MATERIAL ON THE PLAN ARE TO BE CONSIDERED MINIMUM. ALL PLANT MATERIAL MUST MEET OR EXCEED THESE MINIMUM REQUIREMENTS FOR BOTH HEIGHT AND SPREAD. ANY OTHER REQUIREMENTS FOR SPECIFIC SHAPE OR EFFECT AS NOTED ON THE PLAN SHALL ALSO BE REQUIRED FOR ACCEPTANCE. ALL TREES TO BE SINGLE TRUNKED, UNLESS OTHERWISE NOTED ON THE PLANS.
- ALL TREES TO BE RELOCATED SHALL BE ROOT PRUNED 60 DAYS PRIOR TO THEIR RELOCATION.
- TREES TO BE TRANSPLANTED ARE TO BE FLOODED FOR FIVE DAYS PRIOR TO RELOCATION.
- SITE PREPARATION SHALL INCLUDE THE ERADICATION AND REMOVAL OF ANY WEEDS, GRASS, CLEAN-UP OF ANY DEAD MATERIAL AND FINISH GRADING AS PER THE SPECS.
- THE LANDSCAPE CONTRACTOR SHALL AT ALL TIMES KEEP THE JOB SITE CLEAN AND FREE FROM ACCUMULATION OF WASTE MATERIAL, DEBRIS, AND RUBBISH.
- THE LANDSCAPE CONTRACTOR SHALL EXERCISE CAUTION TO PROTECT ALL EXISTING SOD AND IRRIGATION. ANY DAMAGE TO THE SOD OR IRRIGATION SHALL BE REPLACED OR REPAIRED TO THE ORIGINAL STATE BY THE LANDSCAPE CONTRACTOR AT NO ADDITIONAL COST TO THE OWNER.



LANDSCAPE ARCHITECT  
FL RLA LIC #6667191  
900 BISCAYNE BLVD  
MIAMI, FL 33132  
P: 786.346.8909  
www.VincentFiligenzi.com

PROFESSIONAL SEAL:



NOTE:  
These architectural drawings and plans are the property of Vincent A. Filigenzi, Landscape Architect. They shall not be reproduced for use by any individual or entity or any other project without the written permission of the architect.

LENOX AVENUE  
Landscape Design  
1525 Lenox Avenue  
Miami Beach, FL 33139

SHEET ISSUE:		
REV #	DATE	DESCRIPTION
1	04/27/2024	LANDSCAPE REVIEW

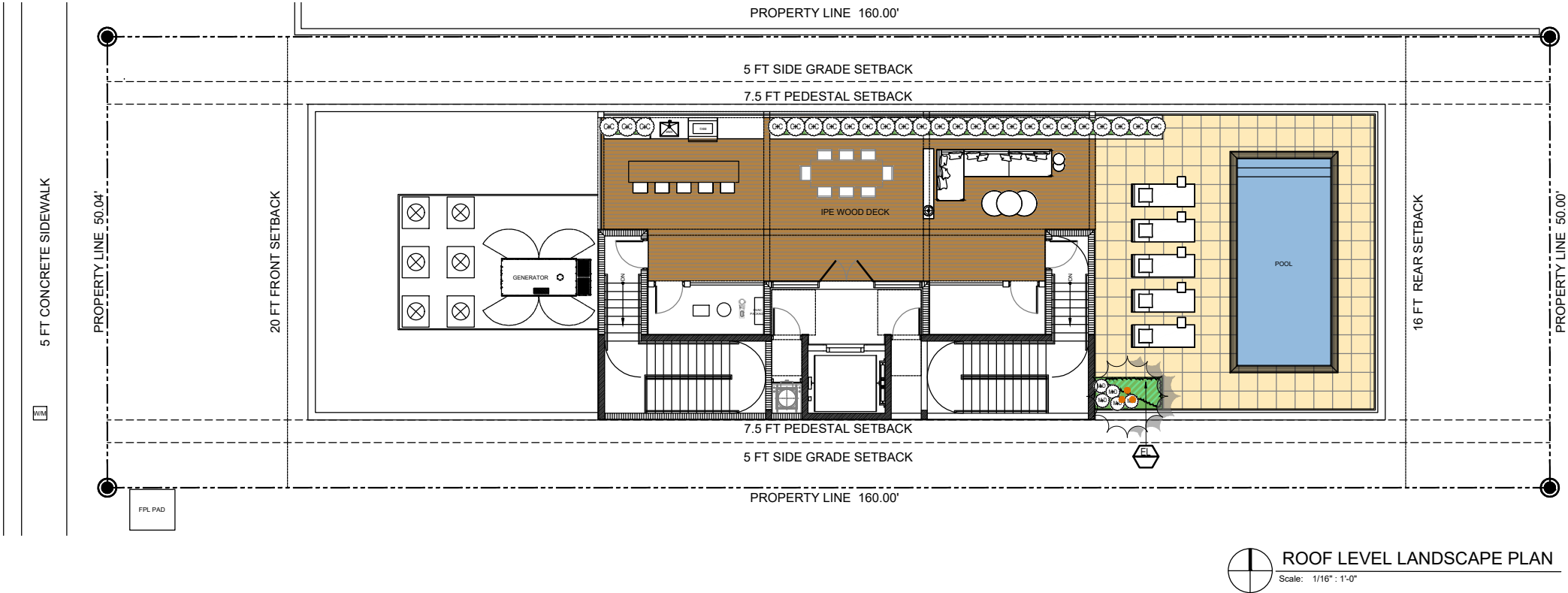
DRAWN BY: JP  
CHECKED BY: VF  
DATE: 07.01.2024

DISCIPLINE / SHEET TITLE:  
OVERALL  
LANDSCAPE  
PLAN

SHEET NUMBER:  
LP-1.0



LENOX AVE



PROPOSED PLANTING SYMBOLS



SYM	BOTANICAL NAME	COMMON NAME	SPEC	NATIVE	DROUGHT	QTY
TREES + PALMS						
	<i>Thrinax radiata</i>	Thatch Palm	10'-12' HT TRIPLE	*		1
SHRUBS + ACENTS						
CC	<i>Capparis cynophallophora</i>	Jamaican Caper	25G			25
MD	<i>Monstera deliciosa</i>	Swiss Cheese Plant	7 GAL @ 36" OC			5
GROUNDCOVERS						
EL	<i>Ernodea littoralis</i>	Golden Creeper	1 GAL @ 18" OC	*		11



LANDSCAPE ARCHITECT  
FL R/LIC. #6667191  
900 BISCAYNE BLVD  
MIAMI, FL 33132  
P: 786.346.8909  
www.VincentFiligenzi.com

PROFESSIONAL SEAL:



NOTE:  
These architectural drawings and plans are the property of Vincent Filigenzi Design, LLC. They are to be used for the project and site only. No part of these drawings and plans shall be reproduced or used by any individual or entity or any other project without the written permission of Vincent Filigenzi Design, LLC.

LENOX AVENUE  
Landscape Design  
1525 Lenox Avenue  
Miami Beach, FL 33139

SHEET ISSUE:		
REV #	DATE	DESCRIPTION

DRAWN BY: JP  
CHECKED BY: VF  
DATE: 04.22.2024

DISCIPLINE / SHEET TITLE:  
ROOF LEVEL  
LANDSCAPE  
PLAN

SHEET NUMBER:  
LP-1.1

## HARDSCAPE MATERIALS



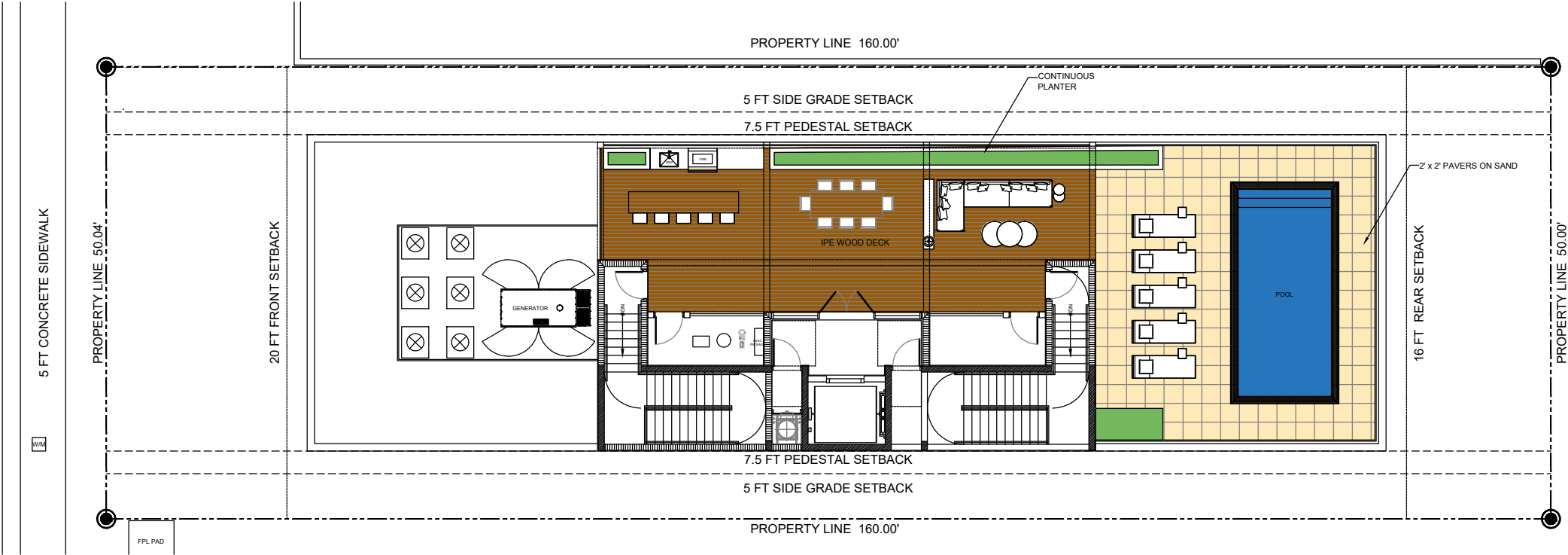
## HARDSCAPE MATERIALS IMAGES



**Landscape Design**  
1525 Lenox Avenue  
Miami Beach, FL 33139

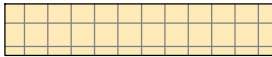

NUMBER:  
LH-1.0

LENOX AVE

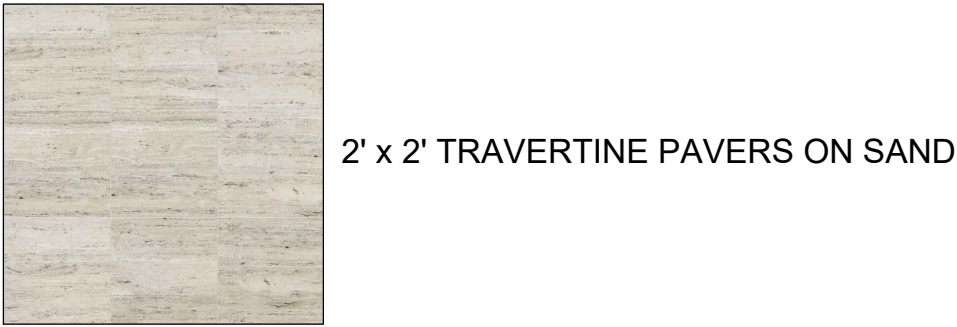


ROOF LEVEL HARDSCAPE PLAN  
Scale: 1/16" = 1'-0"

HARDSCAPE MATERIALS

-  POOL DECK
-  IPE WOOD DECK ON SLEEPERS FASTENED TO CONCRET SLAB

HARDSCAPE MATERIALS IMAGES



LANDSCAPE ARCHITECT  
FL R/LA LIC. #6667191  
900 BISCAYNE BLVD  
MIAMI, FL 33132  
P: 786.346.8909  
www.VincentFiligenzi.com

PROFESSIONAL SEAL:



NOTE:  
These architectural drawings and plans are the property of Vincent Filigenzi Design, LLC. They are to be used for the project and site only. No part of these drawings and plans shall be reproduced or used by any individual or entity or any other project without the written permission of Vincent Filigenzi Design, LLC.

LENOX AVENUE  
Landscape Design  
1525 Lenox Avenue  
Miami Beach, FL 33139

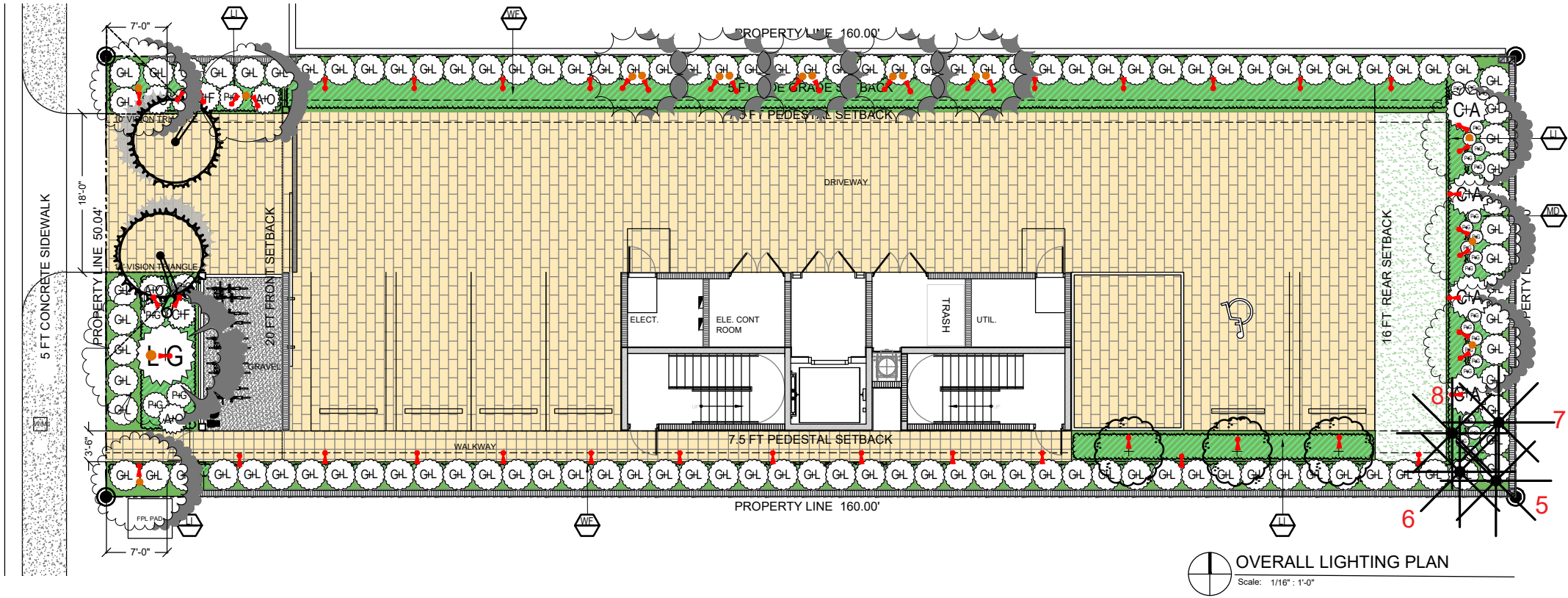
SHEET ISSUE:		
REV #	DATE	DESCRIPTION

DRAWN BY: JP  
CHECKED BY: VF  
DATE: 04.22.2024

DISCIPLINE / SHEET TITLE:  
ROOF LEVEL  
HARDSCAPE  
PLAN

SHEET NUMBER:  
LH-1.1

LENOX AVE



OVERALL LIGHTING PLAN  
Scale: 1/16" = 1'-0"

## FEATURES & BENEFITS

- Built in the U.S.A.
- CNC-machined from 6061 aircraft-grade aluminum or raw brass.
- U.S.A. made light engine and driver.
- Built in surge protector.
- Adjustable knuckle for ease of light positioning.
- IP66 rated.
- CREE 2 step binned LEDs with L70 over 80,000 hours.

## SPECIFICATIONS

- **Construction:** 6061 aircraft-grade aluminum or raw brass
- **Finishes:** Architectural Bronze (AB), Black (BLK), Stainless Aluminum (SSA), Brass (BR)
- **Lead Wire:** 36" 22AWG tinned copper
- **Mounting:** 8" LV180 ground stake
- **Lens:** Clear flat
- **Driver System:** Internal
- **Operating Voltage:** 10.5-18 VAC
- **CRI:** 80+
- **Beam Spreads:** 12°, 25°, 40°, 60°

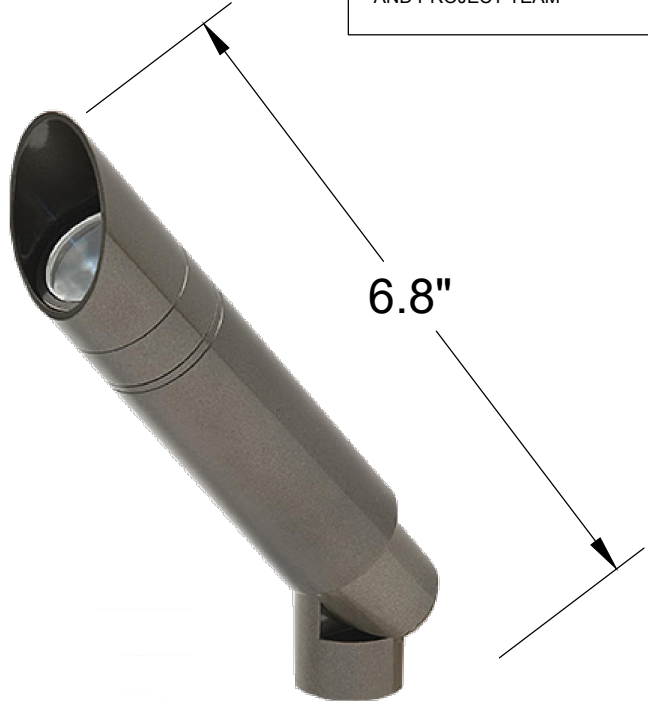
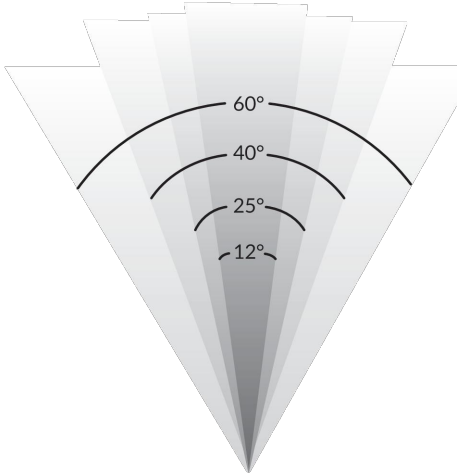
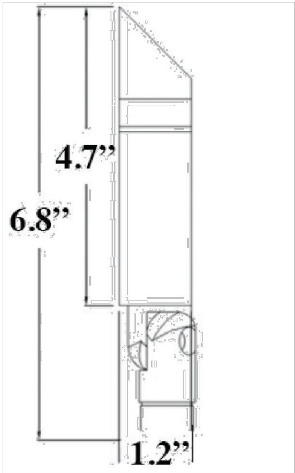
LIGHT FIXTURES				
SYM	QTY	FIXTURE TYPE	MANUFACTURER	SPEC
	52	UPLIGHT	GARDEN LIGHT LED	FINISH: ALUMINUM OR BRONZE

NOTE: SYMBOLS ON PLAN ARE EXAGGERATED IN SCALE FOR GRAPHIC CLARITY.

LANDSCAPE ARCHITECT TO APPROVE FINAL LOCATIONS

NIGHT TIME TEST TO BE COORDINATED BY CONTRACTOR WITH LANDSCAPE ARCHITECT AND PROJECT TEAM

## PRODUCT DIMENSIONS & BEAM SPREADS



LANDSCAPE ARCHITECT  
FLA.LIC. #6667191  
900 BISCAYNE BLVD  
MIAMI, FL 33132  
P: 786.346.8909  
www.VincentFiligenzi.com

PROFESSIONAL SEAL:



NOTE:  
These architectural drawings and plans are the property of Vincent Filigenzi Design, LLC. They are to be used for the project and site only. No part of these drawings and plans shall be reproduced for use by any individual or entity or any other project without the written permission of Vincent Filigenzi Design, LLC.

LENOX AVENUE  
Landscape Design  
1525 Lenox Avenue  
Miami Beach, FL 33139

SHEET ISSUE:		
REV #	DATE	DESCRIPTION

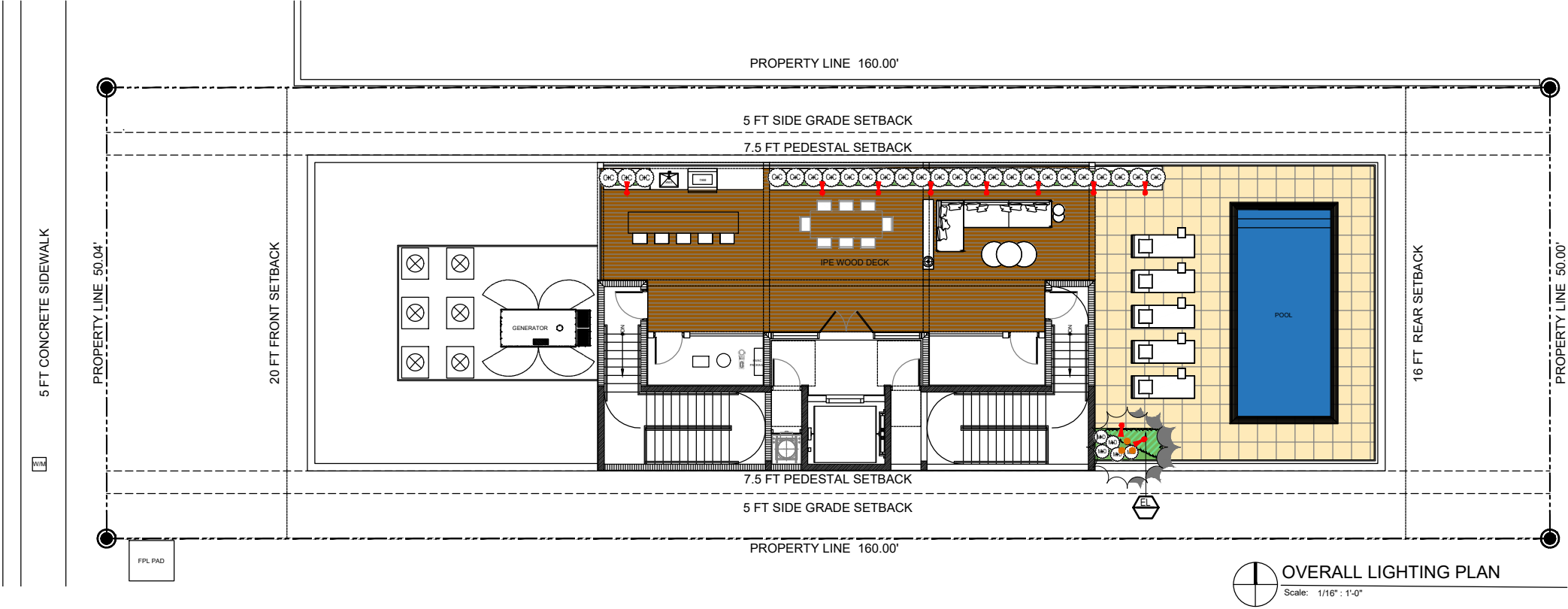
DRAWN BY: JP  
CHECKED BY: VF  
DATE: 04.22.2024

DISCIPLINE / SHEET TITLE:  
OVERALL LIGHTING PLAN

SHEET NUMBER:  
LL-1.0



LENOX AVE



OVERALL LIGHTING PLAN  
Scale: 1/16" = 1'-0"

### FEATURES & BENEFITS

- Built in the U.S.A.
- CNC-machined from 6061 aircraft-grade aluminum or raw brass.
- U.S.A. made light engine and driver.
- Built in surge protector.
- Adjustable knuckle for ease of light positioning.
- IP66 rated.
- CREE 2 step binned LEDs with L70 over 80,000 hours.

### SPECIFICATIONS

- Construction:** 6061 aircraft-grade aluminum or raw brass
- Finishes:** Architectural Bronze (AB), Black (BLK), Stainless Aluminum (SSA), Brass (BR)
- Lead Wire:** 36" 22AWG tinned copper
- Mounting:** 8" LV180 ground stake
- Lens:** Clear flat
- Driver System:** Internal
- Operating Voltage:** 10.5-18 VAC
- CRI:** 80+
- Beam Spreads:** 12°, 25°, 40°, 60°

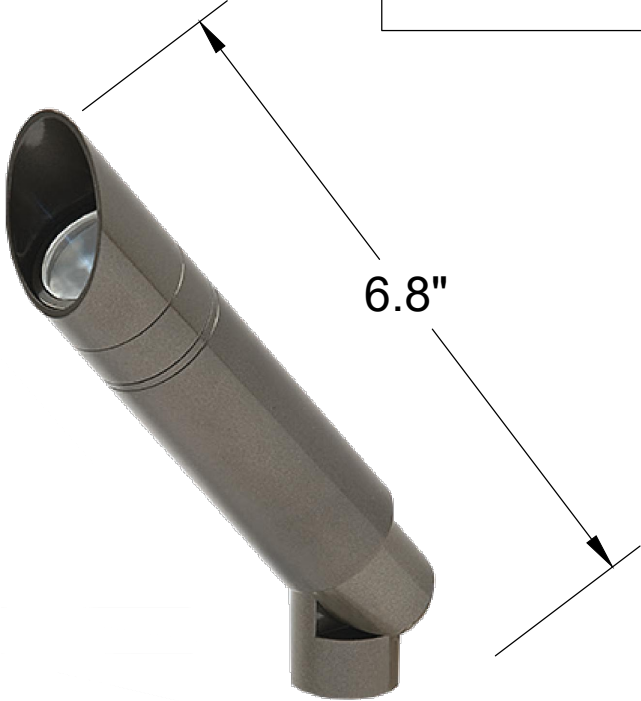
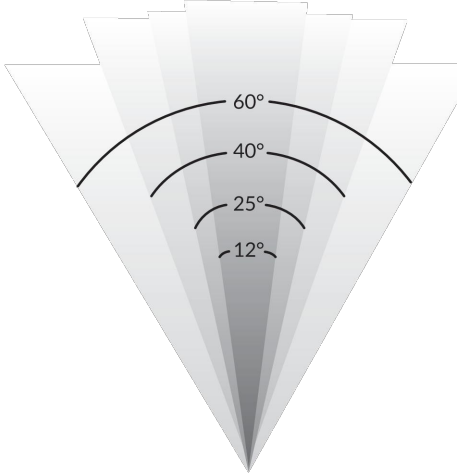
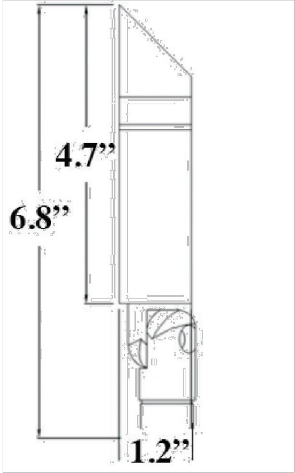
LIGHT FIXTURES				
SYM	QTY	FIXTURE TYPE	MANUFACTURER	SPEC
➤	10	UPLIGHT	GARDEN LIGHT LED	FINISH: ALUMINUM OR BRONZE

NOTE: SYMBOLS ON PLAN ARE EXAGGERATED IN SCALE FOR GRAPHIC CLARITY.

LANDSCAPE ARCHITECT TO APPROVE FINAL LOCATIONS

NIGHT TIME TEST TO BE COORDINATED BY CONTRACTOR WITH LANDSCAPE ARCHITECT AND PROJECT TEAM

### PRODUCT DIMENSIONS & BEAM SPREADS



LANDSCAPE ARCHITECT  
FLA.LIC. #6667191  
900 BISCAYNE BLVD  
MIAMI, FL 33132  
P: 786.346.8909  
www.VincentFiligenzi.com

PROFESSIONAL SEAL:



NOTE:  
These architectural drawings and plans are the property of Vincent Filigenzi, Landscape Architect. These drawings and plans shall not be reproduced for use by any individual or entity or any other project without the written permission.

LENOX AVENUE  
Landscape Design  
1525 Lenox Avenue  
Miami Beach, FL 33139

SHEET ISSUE:		
REV #	DATE	DESCRIPTION

DRAWN BY: JP  
CHECKED BY: VF  
DATE: 04.22.2024

DISCIPLINE / SHEET TITLE:  
OVERALL  
LIGHTING  
PLAN

SHEET NUMBER:  
LL-1.1