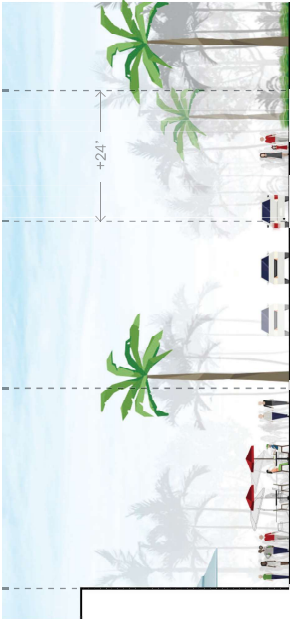
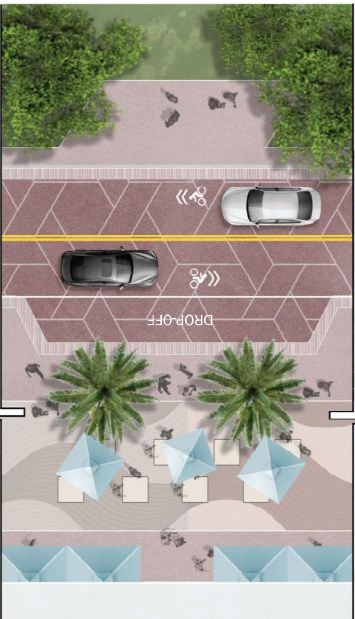


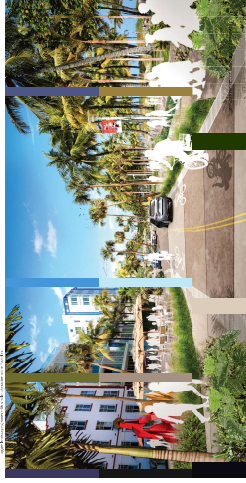
| OCEAN DRIVE CONCEPTS - OPTION 1 3.5.2 PROPOSED PARK + TWO-WAY LIMITED ACCESS STREET



WALK	SEATING	PLANT	CURB SIDE	AUTO	WALK	LUMMUS PARK
10'	22'	8'	8'	10'	15'	
86' ROW +/-						



The Avenue, Washington D.C.



3D rendering of a modern building complex with palm trees and a road.

Exhibit A