

|||||LINCOLN ROAD DISTRICT

PLAYGROUND STUDIES

12/20/2024

PREPARED BY:
**JAMES
CORNER
FIELD
OPERATIONS**

PREPARED FOR:
THE CITY OF MIAMI BEACH

LINCOLN ROAD DISTRICT IMPROVEMENTS PLAYGROUND STUDIES

12/20/2024

TABLE OF CONTENTS

- 1.0 Potential Sites
- 2.0 Cost Analysis
- 3.0 2022 Playground Designs

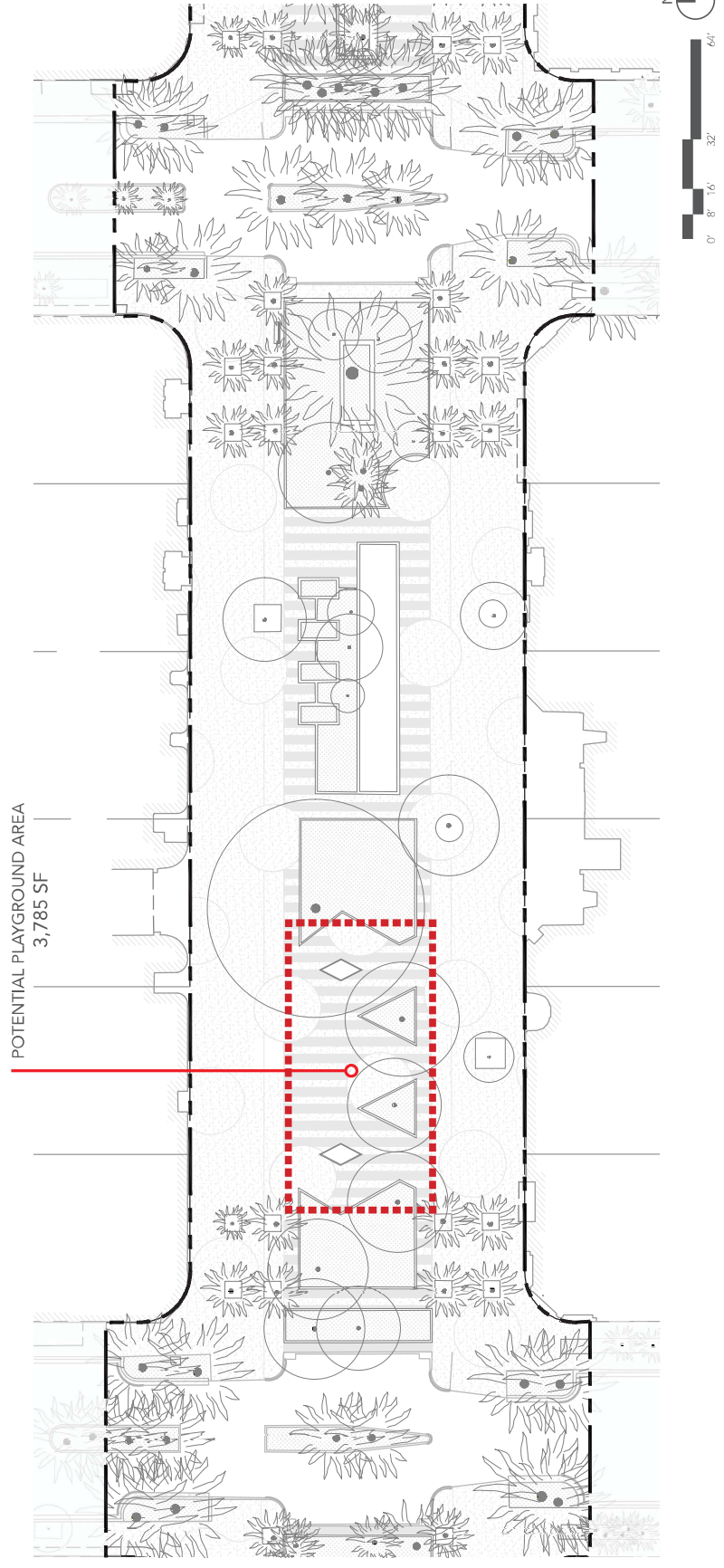
EXHIBIT C

LINCOLN ROAD
900 BLOCK- POTENTIAL SITE #1



LINCOLN ROAD
900 BLOCK- POTENTIAL SITE #1

EXHIBIT C



JAMES
CORNER
FIELD
OPERATIONS

PLAYGROUND STUDIES | DECEMBER 20 2024
LINCOLN ROAD DISTRICT IMPROVEMENTS, CITY OF MIAMI BEACH

EXHIBIT C

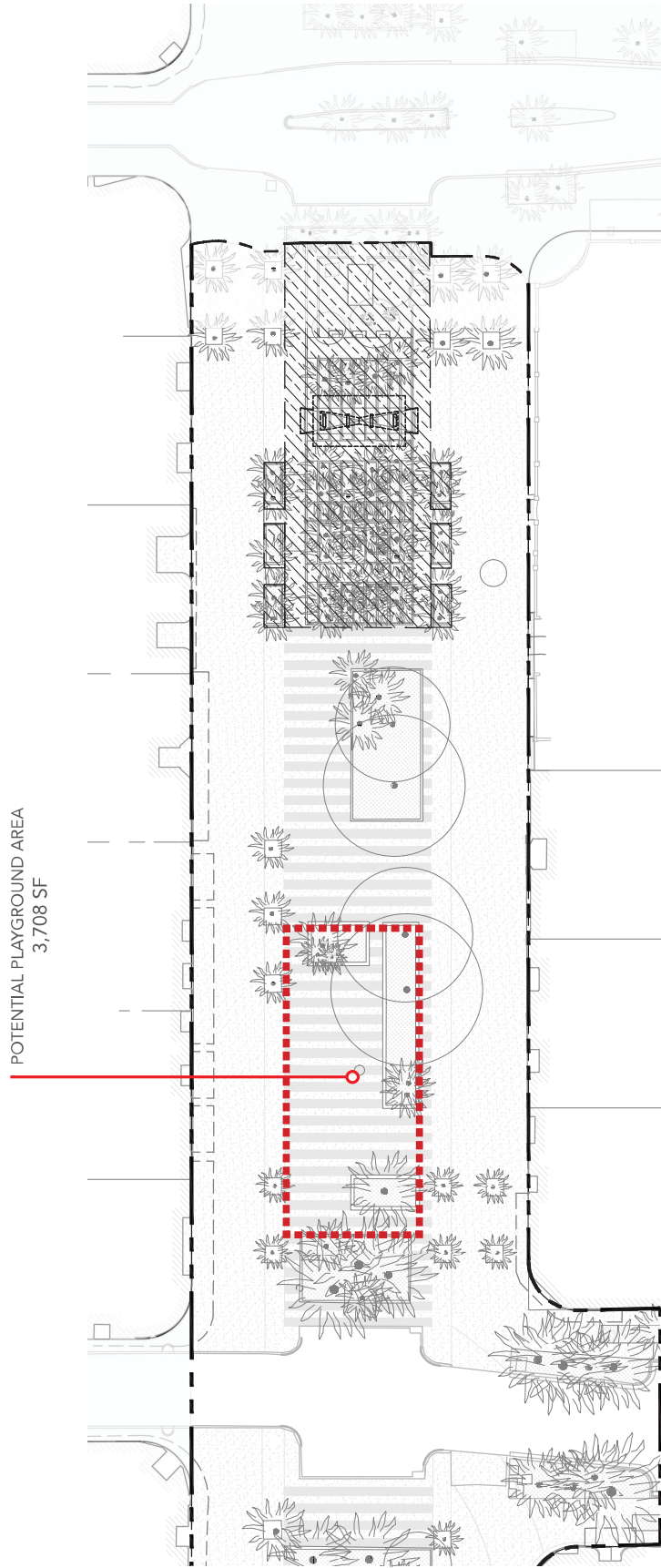
LINCOLN ROAD
500 BLOCK- POTENTIAL SITE #2



LINCOLN ROAD
500 BLOCK- POTENTIAL SITE #2

EXHIBIT C

POTENTIAL PLAYGROUND AREA
3,708 SF



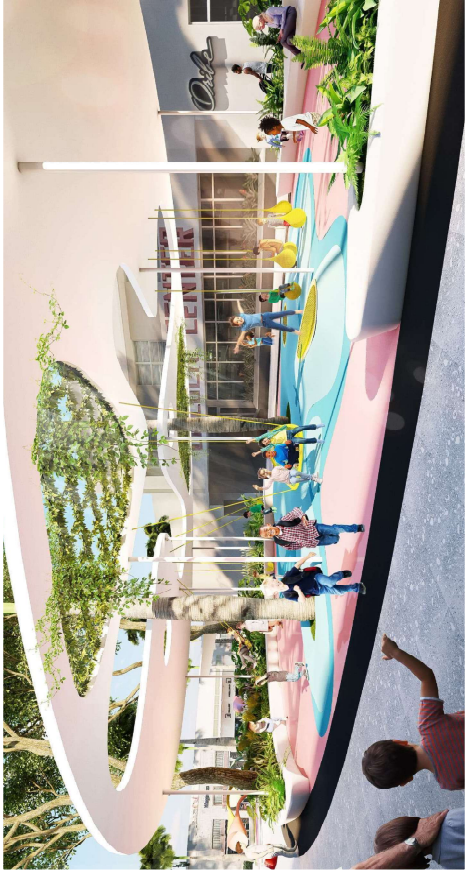
JAMES
CORNER
FIELD
OPERATIONS

PLAYGROUND STUDIES | DECEMBER 20 2024
LINCOLN ROAD DISTRICT IMPROVEMENTS, CITY OF MIAMI BEACH

LINCOLN ROAD
EUCLID OVAL- POTENTIAL SITE #3



EUCLID PLAYSCAPE
2022 COSTS



SWING FOLLY

TOTAL COST (2022) = \$4.38M

GENERAL CONDITIONS = \$543K

DEMO= \$123K

SITE IMPROVEMENTS* = \$1.48M

PLAY FEATURES = \$1M

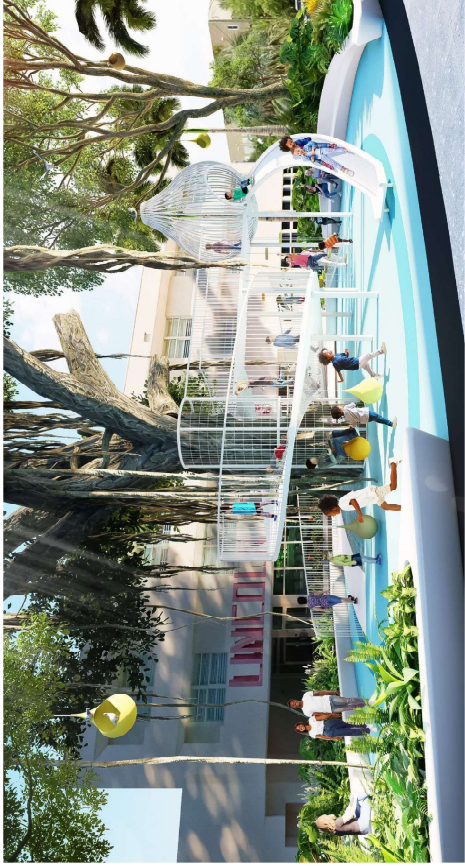
OTHER MARK-UPS** = \$1.22M

Notes:

* includes paving restoration, lighting, planterwalls and seatwalls, planting, irrigation and security bollards

** includes CM fees, contingencies and escalation

JAMES
CORNER
FIELD
OPERATIONS



LAPIDUS TREEHOUSE

TOTAL COST (2022) = \$6.04M

GENERAL CONDITIONS = \$727K

DEMO= \$123K

SITE IMPROVEMENTS* = \$1.48M

PLAY FEATURES = \$2M

OTHER MARK-UPS** = \$1.68M

Notes:

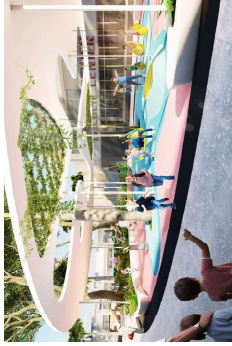
* includes paving restoration, lighting, planterwalls and seatwalls, planting, irrigation and security bollards

** includes CM fees, contingencies and escalation

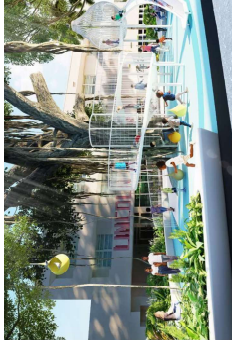
JAMES
CORNER
FIELD
OPERATIONS

EUCLID PLAYSCAPE COST COMPARISONS

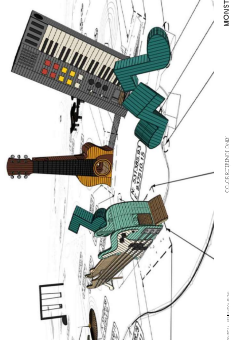
EXHIBIT C



SWING FOLLY
TOTAL COST (2022) = \$4.38M



LAPIDUS TREEHOUSE
TOTAL COST (2022) = \$6.04M



MAURICE GIBB PARK PLAYGROUND
TOTAL COST (2024) = UNKNOWN



PIER 26 PLAYGROUND
TOTAL COST (2024) = \$4.1M



DOMINO PARK PLAYGROUND
TOTAL COST (2019) = \$2M

GENERAL CONDITIONS = \$543K
DEMO= \$123K
SITE IMPROVEMENTS = \$1.48M
PLAY FEATURES = \$1M
OTHER MARK-UPS = \$1.22M

GENERAL CONDITIONS = \$727K
DEMO= \$123K
SITE IMPROVEMENTS = \$1.48M
PLAY FEATURES = \$2M
OTHER MARK-UPS = \$1.68M

GENERAL CONDITIONS = N/A
DEMO= N/A
SITE IMPROVEMENTS = N/A
PLAY FEATURES = \$1.61M
OTHER MARK-UPS = N/A

GENERAL CONDITIONS = N/A
DEMO= N/A
SITE IMPROVEMENTS= N/A
PLAY FEATURES = N/A
OTHER MARK-UPS= N/A

GENERAL CONDITIONS = N/A
DEMO= N/A
SITE IMPROVEMENTS = N/A
PLAY FEATURES = N/A
OTHER MARK-UPS = N/A

TOTAL SIZE: 10,650 SF
TOTAL COST PER SF = \$411

TOTAL SIZE: 10,650 SF
TOTAL COST PER SF = \$567

TOTAL SIZE: N/A
TOTAL COST PER SF = N/A

TOTAL SIZE: 6,720 SF
TOTAL COST PER SF = \$610

TOTAL SIZE: 4,720 SF
TOTAL COST PER SF = \$423

PLAY AREA SIZE: 2,060 SF
PLAY FEATURE COST PER SF= \$485

PLAY AREA SIZE: 2,060 SF
PLAY FEATURE COST PER SF= \$970

PLAY AREA SIZE: 9,780 SF
PLAY FEATURE COST PER SF = \$165

PLAY AREA SIZE: N/A
PLAY FEATURE COST PER SF = N/A

PLAY AREA SIZE: N/A
PLAY FEATURE COST PER SF = N/A

Notes:

Total cost include playground equipment, playground surfacing, paving restoration, lighting, plantervalls and seatwalls, planting, irrigation and security bollards, CM fees, contingencies and escalation.

Notes:

Total cost include playground equipment, playground surfacing, paving restoration, lighting, plantervalls and seatwalls, planting, irrigation and security bollards, CM fees, contingencies and escalation.

Notes:

Play feature costs limited to shade structure & foundations, playground equipment, playground surfacing and fence.

Notes:

Total costs include playground equipment, playground surfacing, planter walls and seatwalls, planting and lighting, CM fees, contingencies and escalation.

Notes:

Total costs include playground equipment, playground surfacing, planter walls and seatwalls, planting and lighting.

EXHIBIT C

EUCLID PLAYScape SCALE COMPARISON
OPTION 1 - SWING FOLLY (3,670 SF)

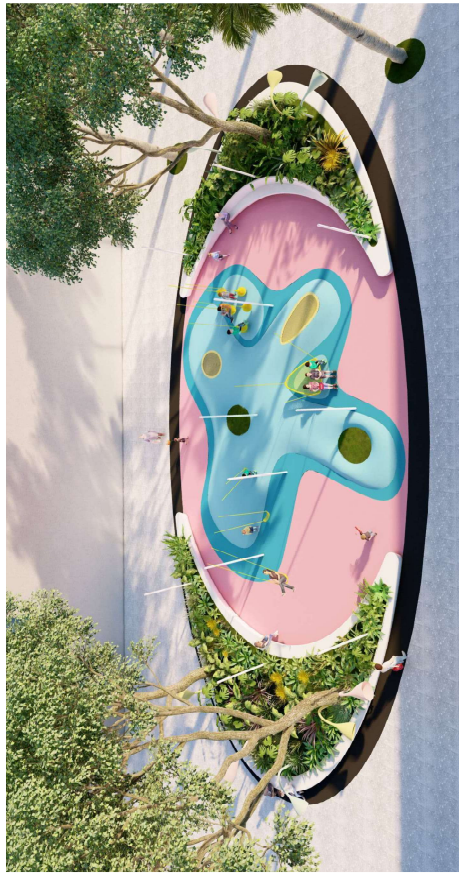
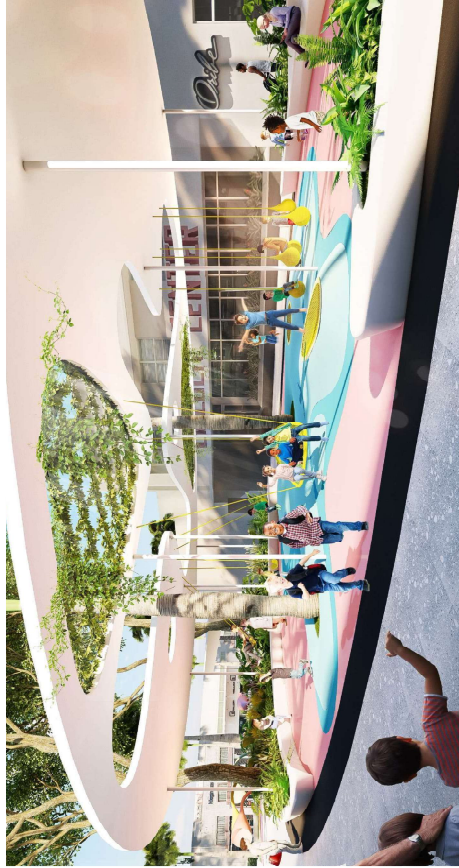
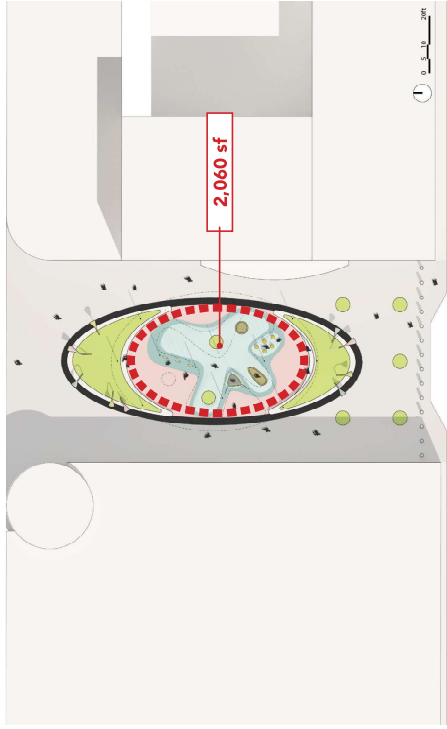
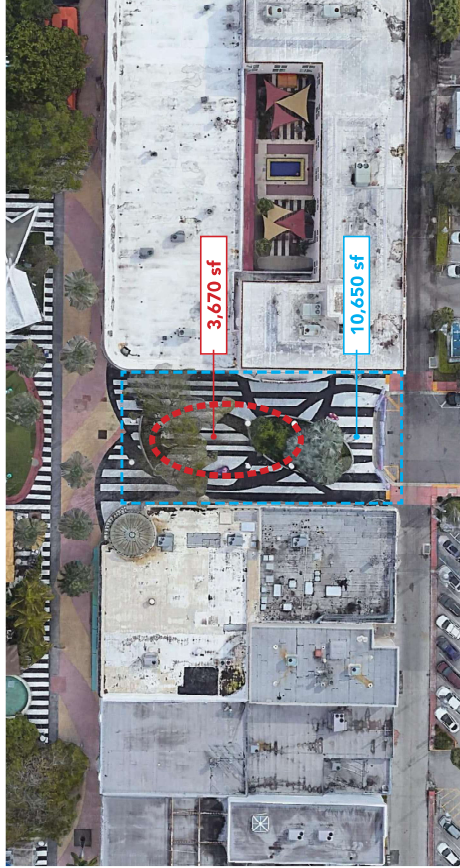


EXHIBIT C

EUCLID PLAYSCAPE SCALE COMPARISON
OPTION 2- LAPIDUS TREEHOUSE(3,670 SF)

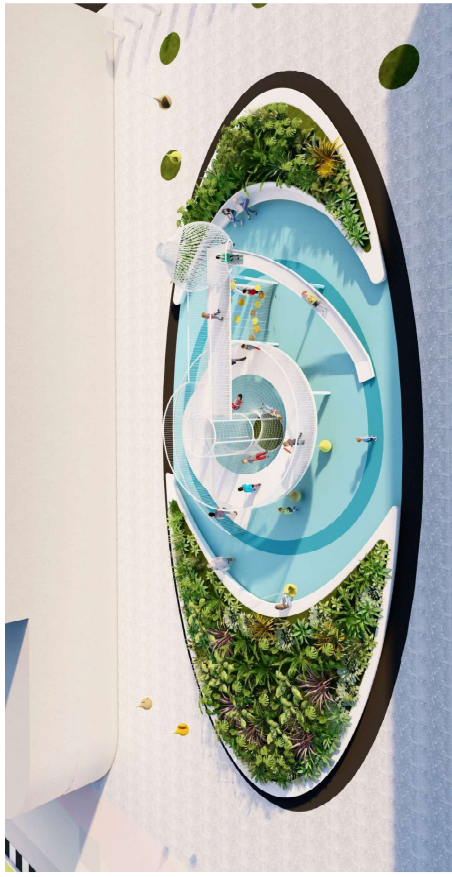
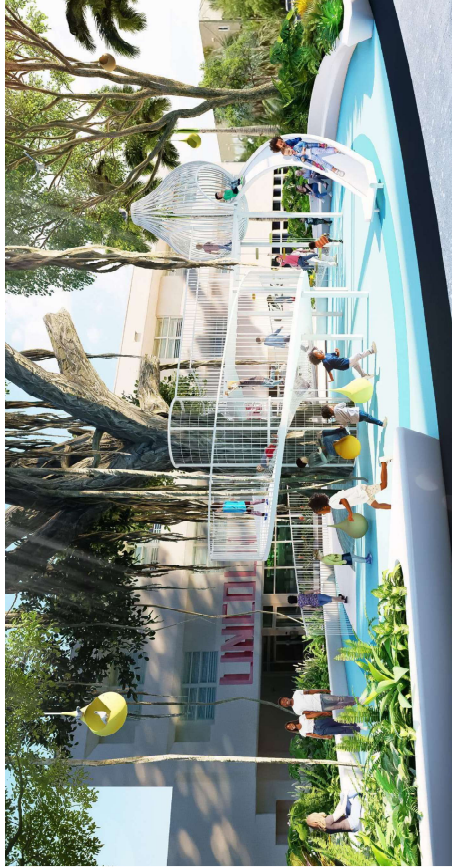
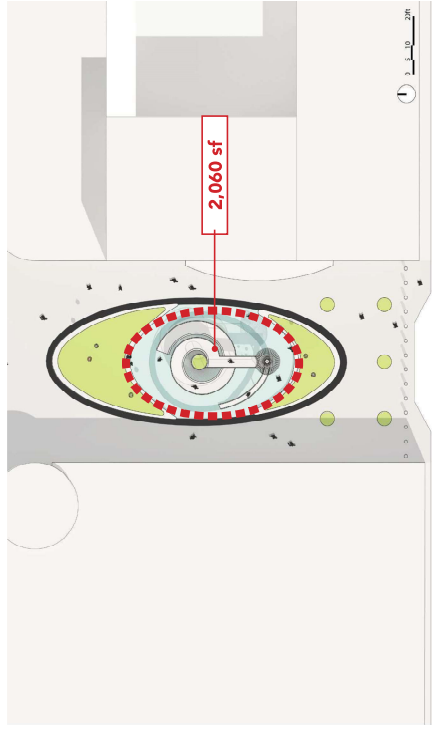
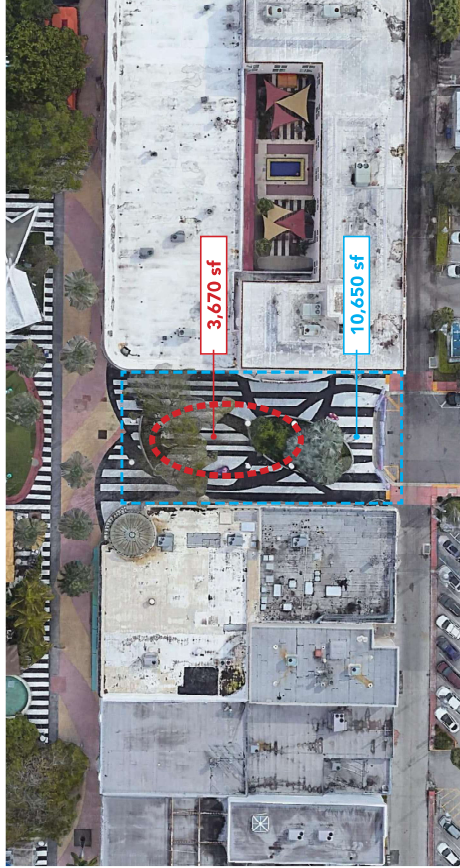
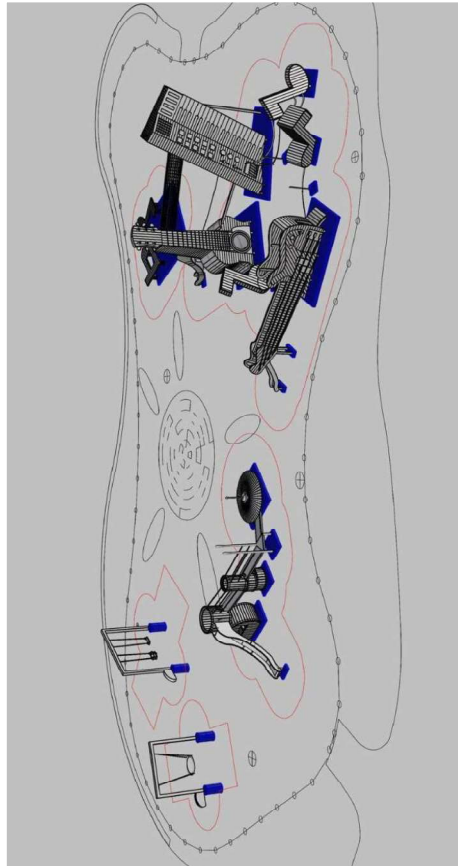
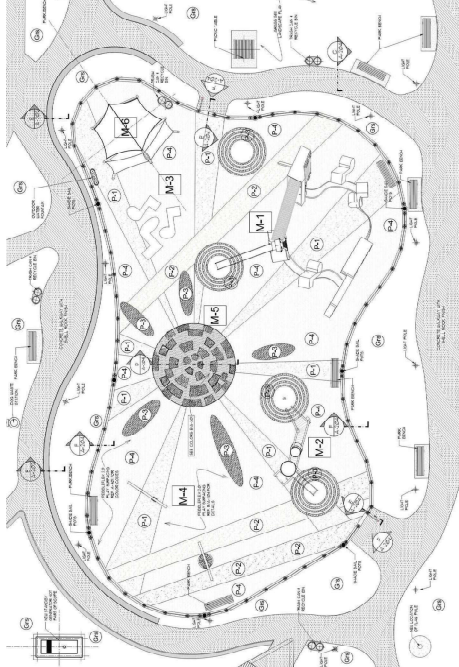
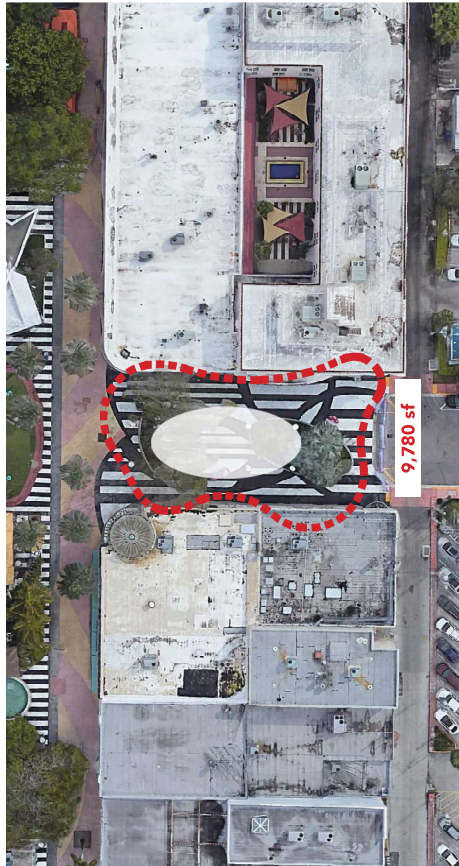
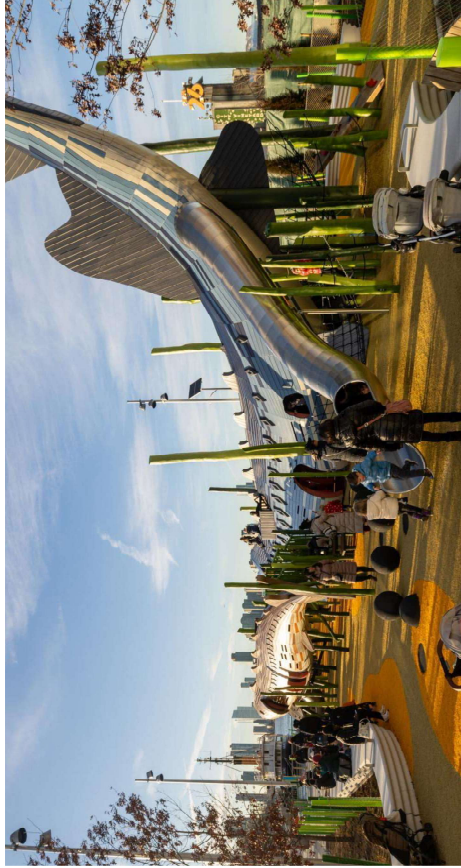
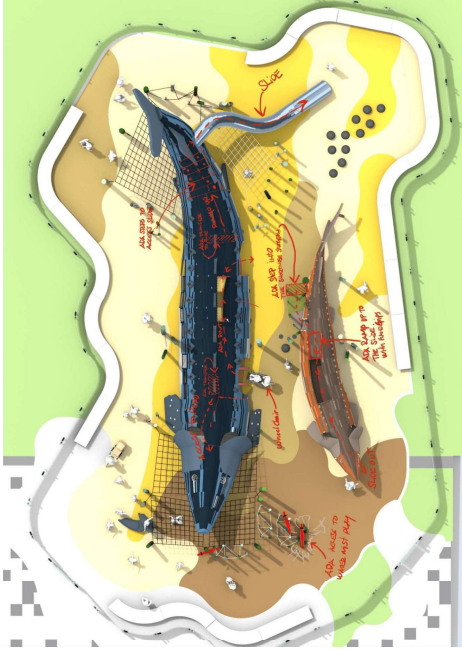
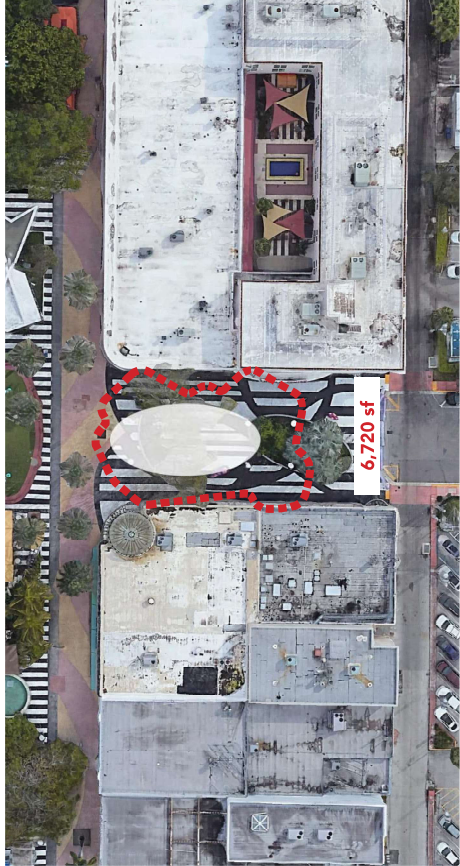


EXHIBIT C

EUCLID PLAYSCAPE SCALE COMPARISON
MAURICE GIBB PARK PLAYGROUND, MIAMI BEACH (9,780 SF)

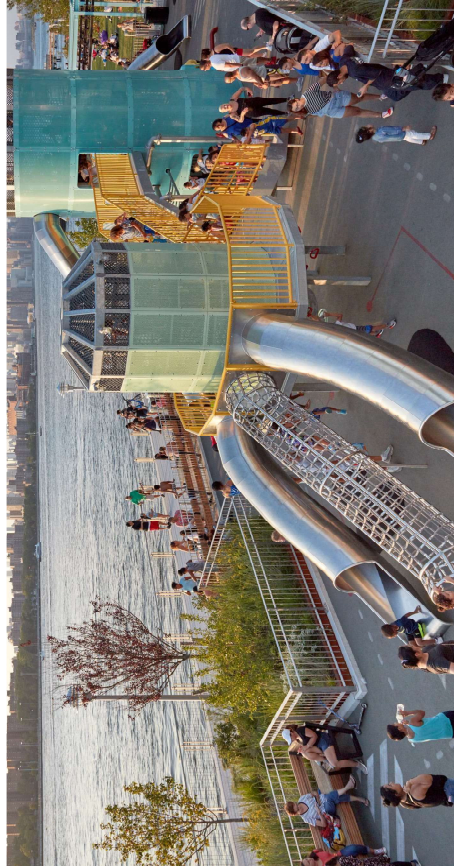
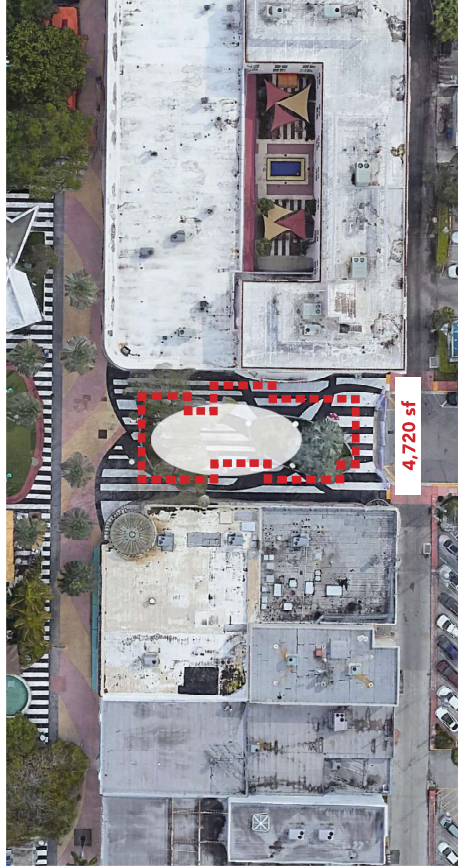


EUCLID PLAYScape SCALE COMPARISON **PIER 26 PLAYGROUND, NEW YORK (6,720 SF)**



EUCLID PLAYSCAPE SCALE COMPARISON DOMINO PARK PLAYGROUND (4,720 SF)

EXHIBIT C



EUCLID PLAYSCAPE
EUCLID AVE. AND LINCOLN RD.

EXHIBIT C

LINCOLN ROAD AND EUCLID AVENUE

The new play feature, located south of Lincoln Road, at Euclid Avenue will echo the historic Euclid Oval shape by creating a new space bound by seatwalls and planters of a similar architectural vocabulary as the proposed Euclid Oval renovation.

Bounding planters will allow the introduction of dense canopy for shade. Planter walls will contain the space allowing for children and families to play freely in secure environment

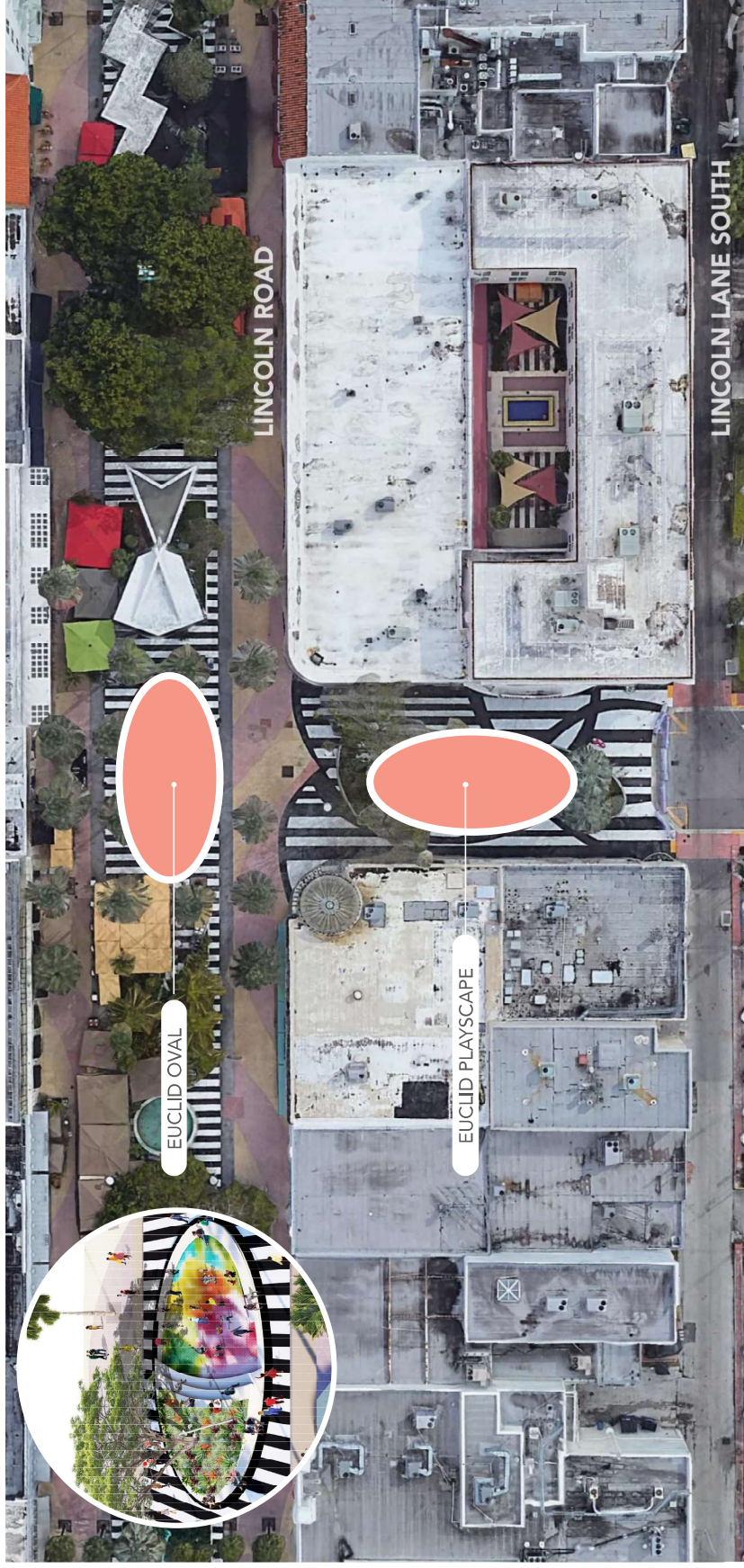


EXHIBIT C

EUCLID PLAYSCAPE
OPTION 1- SWING FOLLY



EUCLID PLAYSCAPE
OPTION 1 - SWING FOLLY



JAMES
CORNER
OPERATIONS

EXHIBIT C

EUCLID PLAYSCAPE
OPTION 1- SWING FOLLY

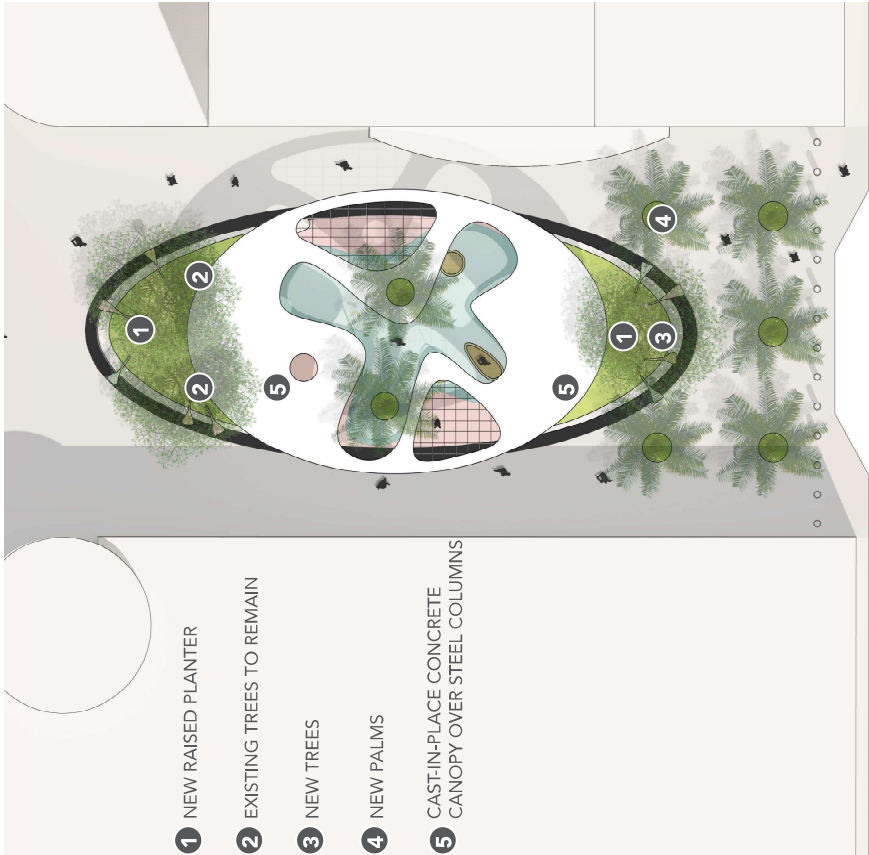


EUCLID PLAYSCAPE
OPTION 1- SWING FOLLY

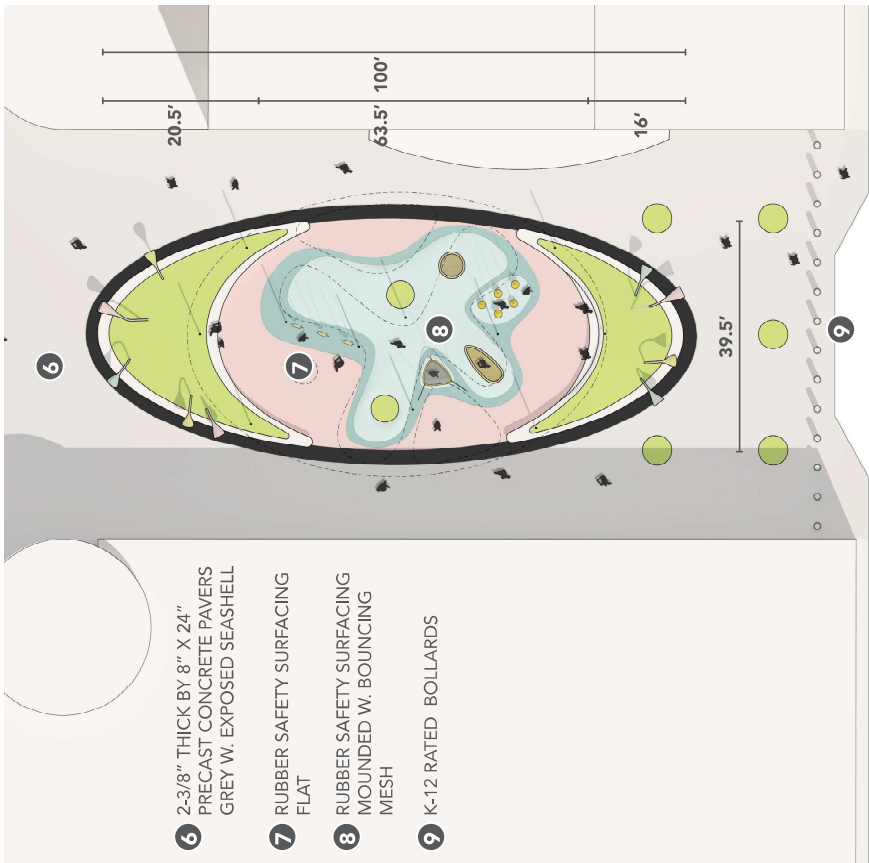


JAMES
CORNER
OPERATIONS

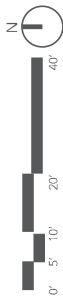
EUCLID PLAYSCAPE
OPTION 1- SWING FOLLY



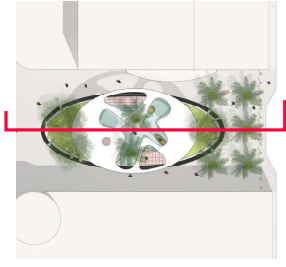
CANOPY PLAN



FLOOR PLAN



EUCLID PLAYSCAPE OPTION 1- SWING FOLLY



KEY PLAN



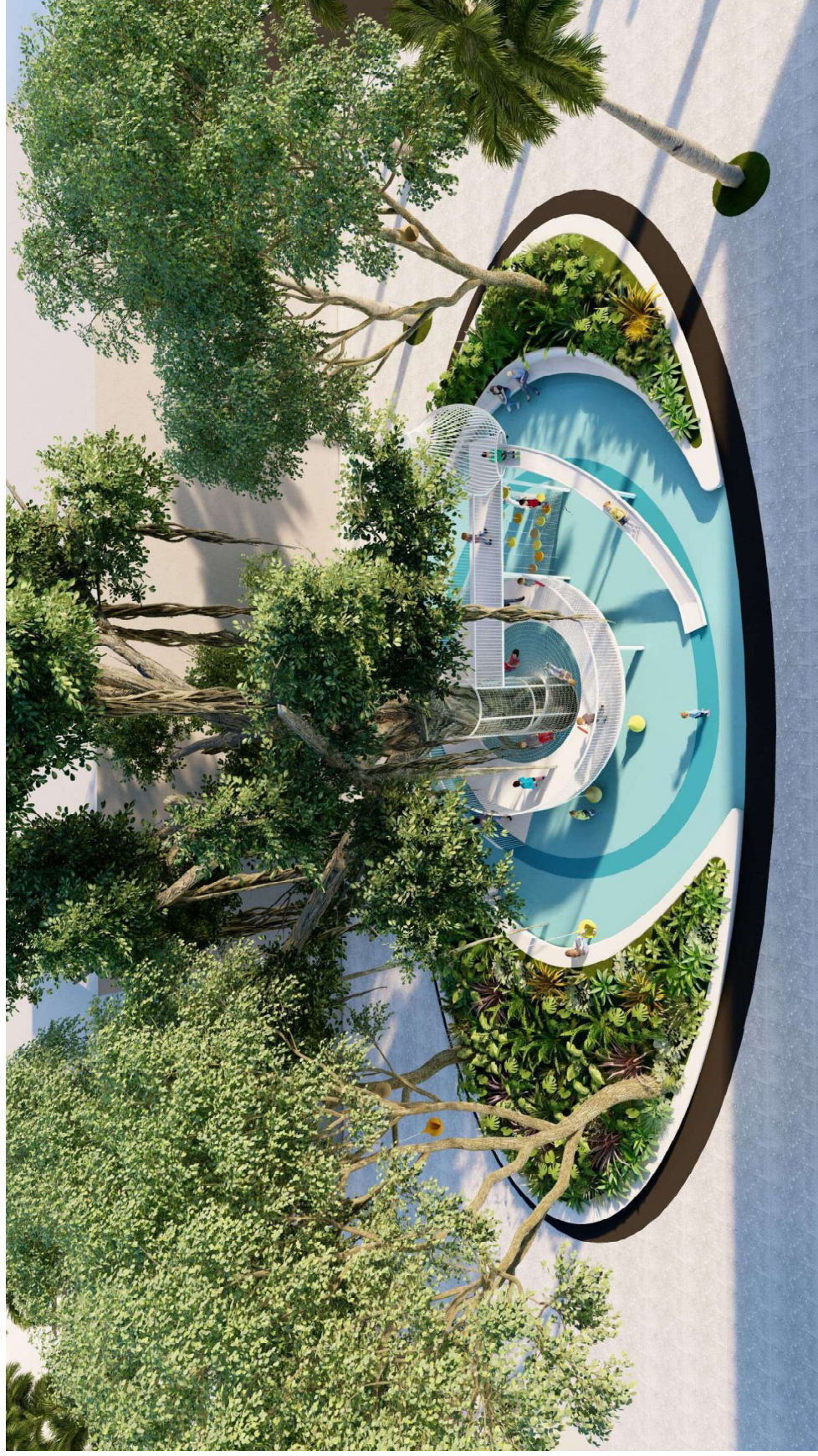
JAMES
 CORNER
 OPERATIONS

EUCLID PLAYSCAPE
 OPTION 2- LAPIDUS TREEHOUSE



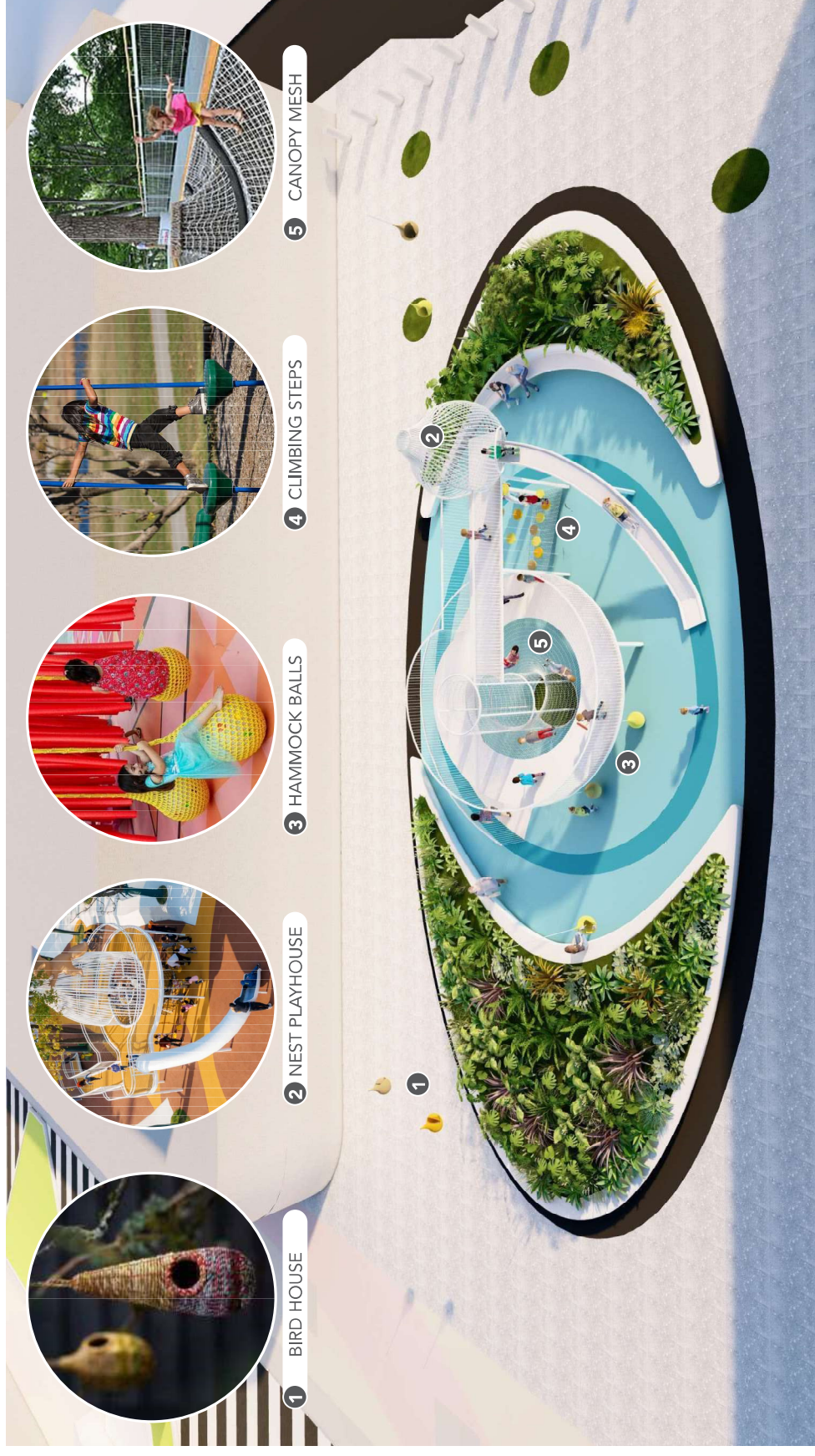
EXHIBIT C

EUCLID PLAYSCAPE
OPTION 2- LAPIDUS TREEHOUSE

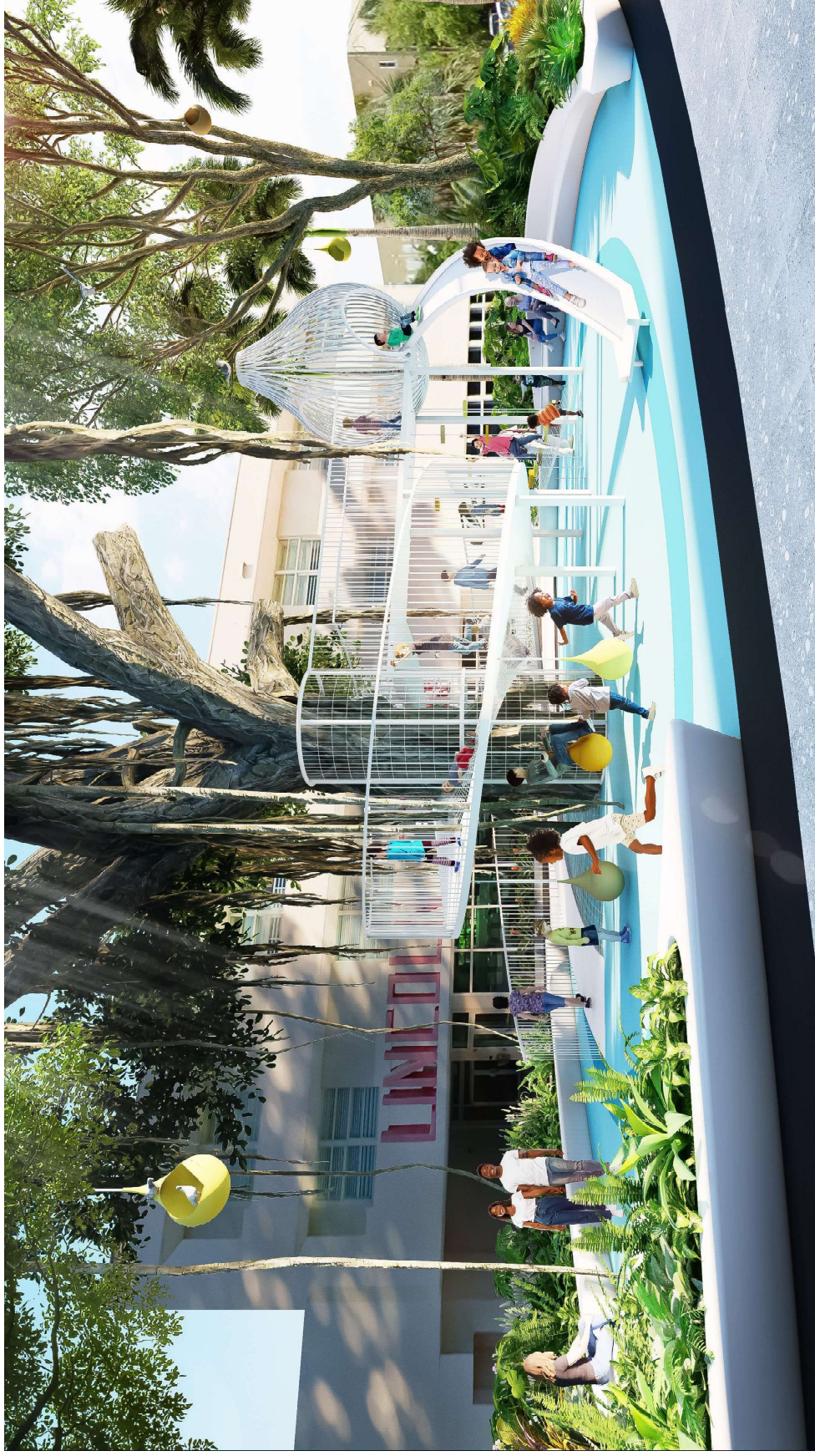


JAMES
CORNER
OPERATIONS

EUCLID PLAYSCAPE
OPTION 2- LAPIDUS TREEHOUSE

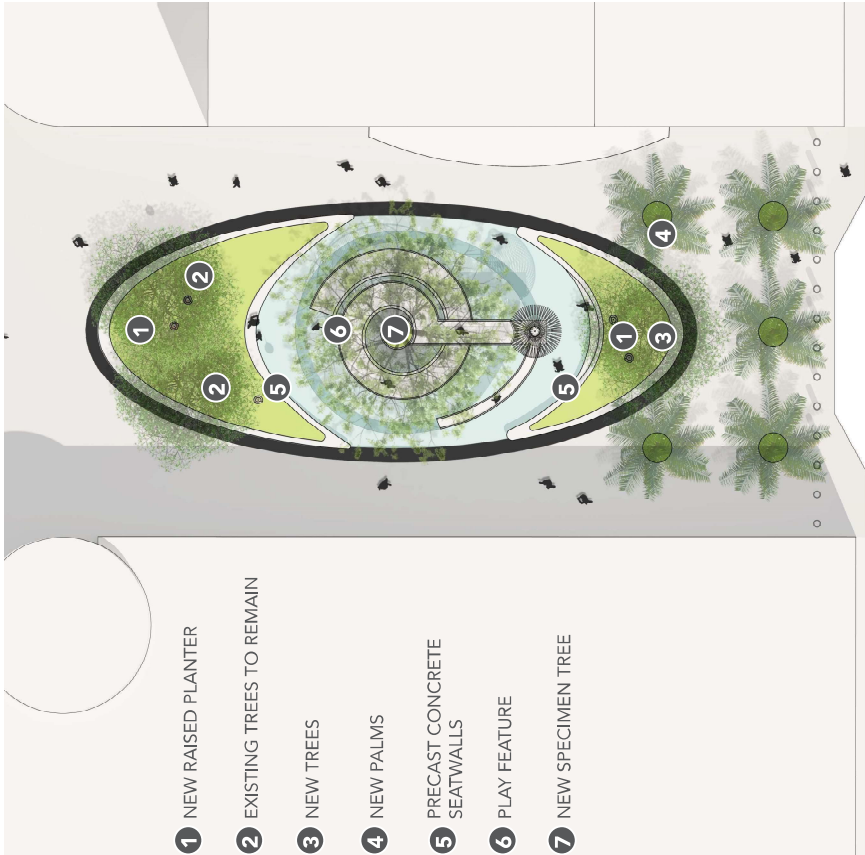


EUCLID PLAYSCAPE
OPTION 2- LAPIDUS TREEHOUSE

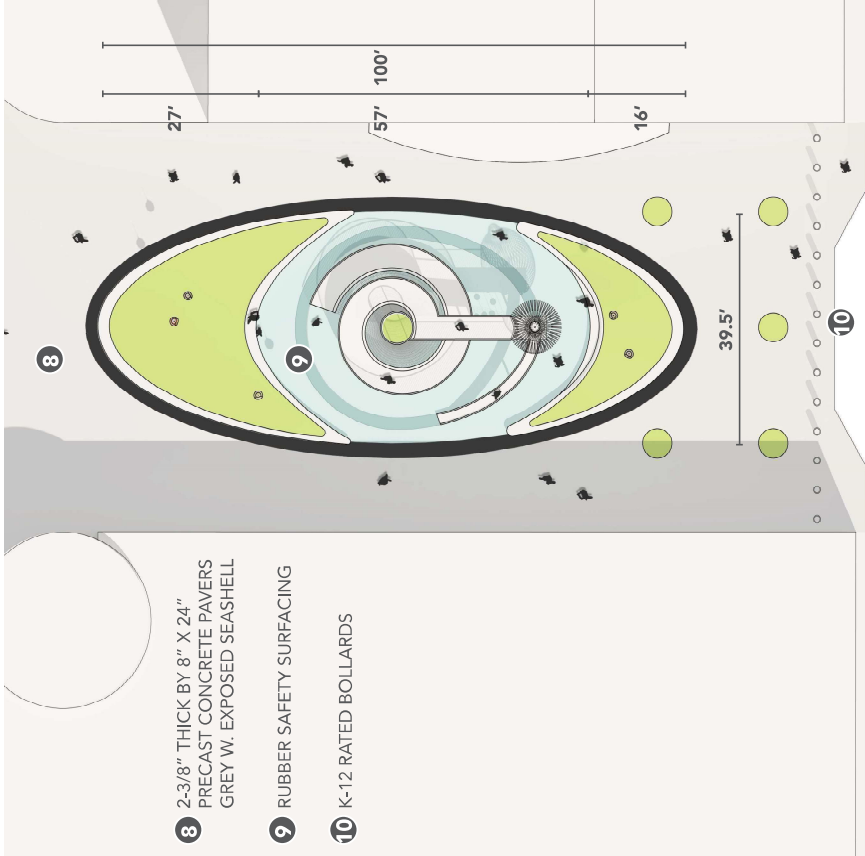


JAMES
CORNER
OPERATIONS

EUCLID PLAYSCAPE
OPTION 2- LAPIDUS TREEHOUSE



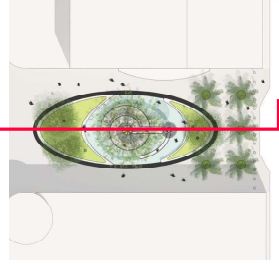
CANOPY PLAN



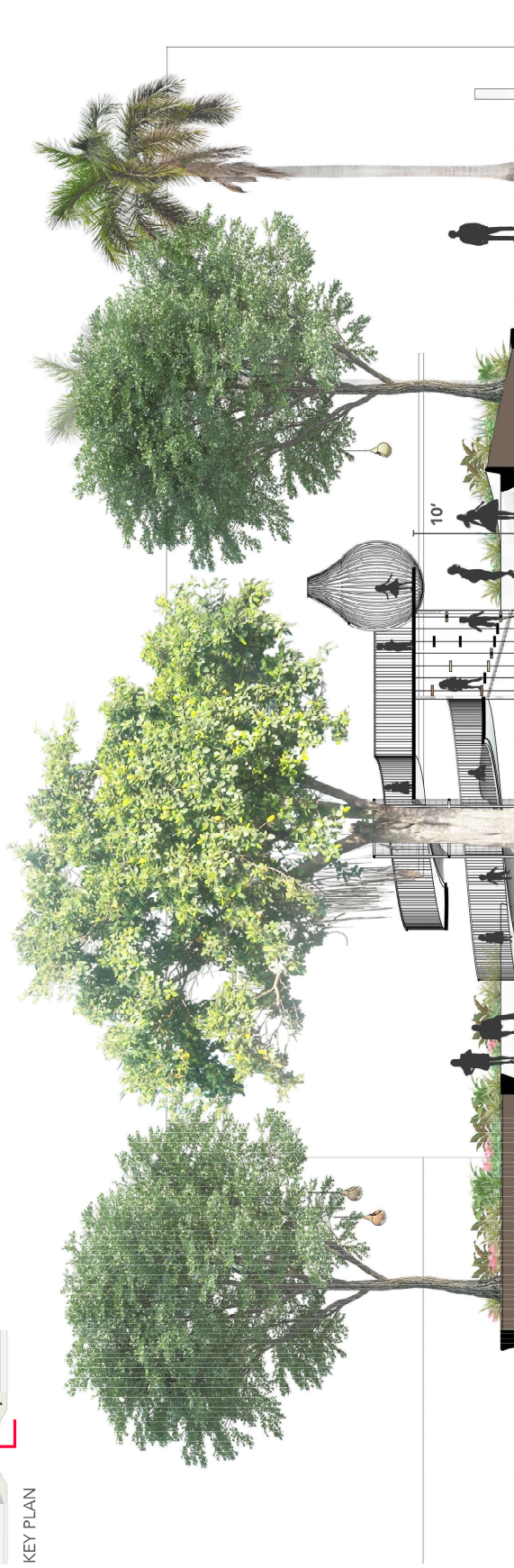
FLOOR PLAN



EUCLID PLAYSCAPE
OPTION 2- LAPIDUS TREEHOUSE



KEY PLAN



LONGITUDINAL SECTION

